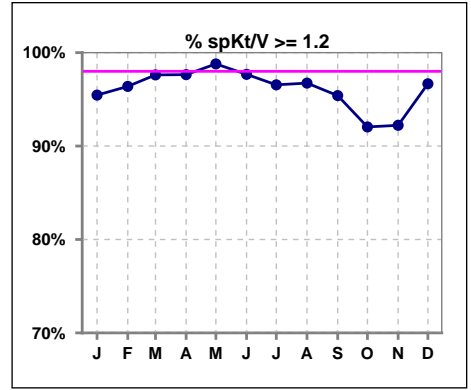
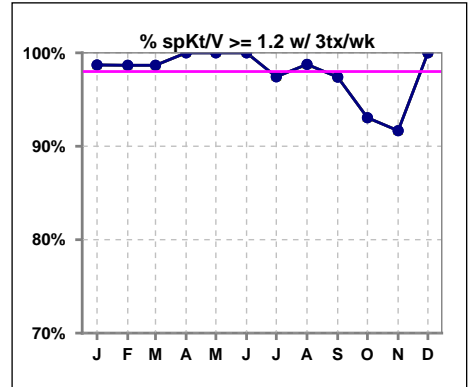


**I. ADEQUACY OF DIALYSIS**

	Jan	Feb	Mar	Apr	May	Jun	Jul	Aug	Sep	Oct	Nov	Dec
# spKt/V	88	83	84	85	83	86	87	92	87	88	90	90
# spKt/V >= 1.2	84	80	82	83	82	84	84	89	83	81	83	87
Pop. Mean	1.69	1.68	1.66	1.70	1.70	1.63	1.66	1.63	1.67	1.62	1.61	1.69
Std. Deviation	0.31	0.32	0.28	0.32	0.29	0.30	0.29	0.27	0.32	0.35	0.39	0.35
% spKt/V >= 1.2	95%	96%	98%	98%	99%	98%	97%	97%	95%	92%	92%	97%

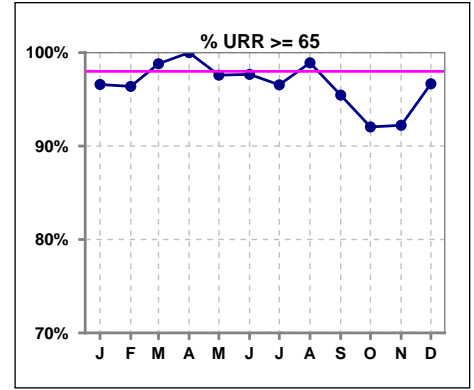


	Jan	Feb	Mar	Apr	May	Jun	Jul	Aug	Sep	Oct	Nov	Dec
# spKt/V w/ 3tx/wk	77	75	75	75	74	76	78	81	77	72	72	71
# spKt/V >= 1.2 w/3tx/wk	76	74	74	75	74	76	76	80	75	67	66	71
Pop. Mean	1.71	1.70	1.68	1.73	1.73	1.68	1.69	1.65	1.71	1.67	1.65	1.73
Std. Deviation	0.30	0.30	0.27	0.32	0.28	0.25	0.28	0.27	0.31	0.34	0.37	0.32
% >= 1.2 w/3tx/wk	99%	99%	99%	100%	100%	100%	97%	99%	97%	93%	92%	100%

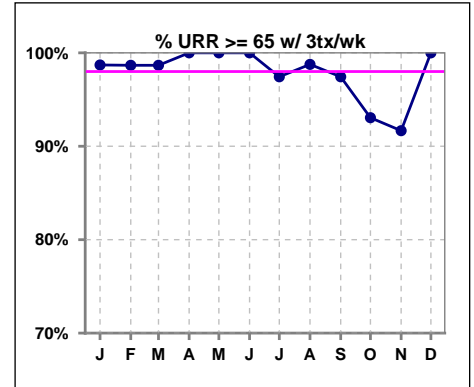


**I. ADEQUACY OF DIALYSIS - CONT.**

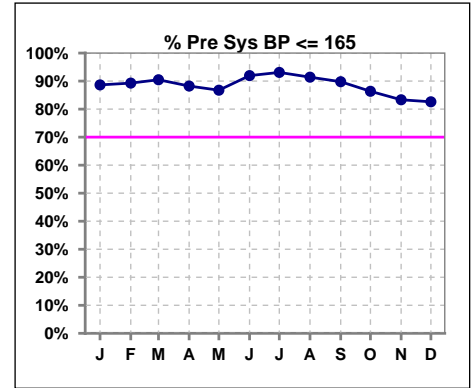
	Jan	Feb	Mar	Apr	May	Jun	Jul	Aug	Sep	Oct	Nov	Dec
# URR	88	83	84	85	83	86	87	92	88	88	90	90
# URR >= 65	85	80	83	85	81	84	84	91	84	81	83	87
Pop. Mean	76	76	76	76	76	75	76	75	76	74	74	76
Std. Deviation	5.80	6.03	5.21	5.77	5.56	7.17	6.01	5.19	6.41	7.68	9.70	6.62
% URR >= 65	97%	96%	99%	100%	98%	98%	97%	99%	95%	92%	92%	97%



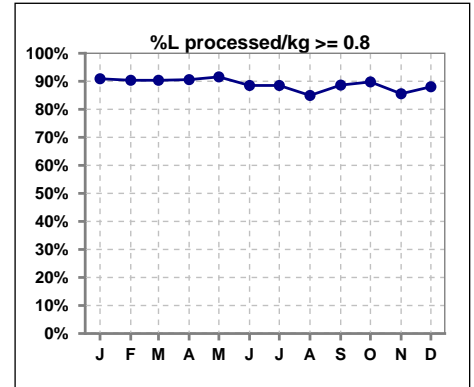
	Jan	Feb	Mar	Apr	May	Jun	Jul	Aug	Sep	Oct	Nov	Dec
# URR w/ 3tx/wk	77	75	75	75	74	76	78	81	78	72	72	71
# URR>=65 w/ 3tx/wk	76	74	74	75	74	76	76	80	76	67	66	71
Pop. Mean	77	77	76	77	77	76	76	76	77	76	75	77
Std. Deviation	5.46	5.16	5.09	5.58	5.17	4.66	5.54	5.15	6.11	7.09	8.70	5.66
% URR>=65 w/ 3tx/wk	99%	99%	99%	100%	100%	100%	97%	99%	97%	93%	92%	100%



	Jan	Feb	Mar	Apr	May	Jun	Jul	Aug	Sep	Oct	Nov	Dec
# Pre Sys BP	88	84	84	85	83	87	87	93	88	88	90	92
# Pre Sys BP <= 165	81	75	77	77	73	81	81	87	79	76	76	76
Pop. Mean	141	141	141	142	142	139	140	139	138	140	140	140
Std. Deviation	20.8	20.7	19.5	20.1	20.4	19.7	19.3	18.9	20.6	22.0	24.2	23.5
%Pre Sys BP <=165	89%	89%	90%	88%	87%	92%	93%	91%	90%	86%	83%	83%



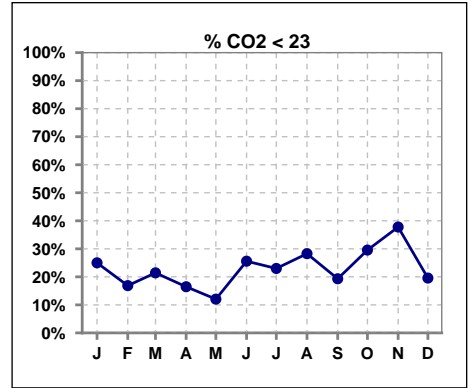
	Jan	Feb	Mar	Apr	May	Jun	Jul	Aug	Sep	Oct	Nov	Dec
# L processed/kg	88	83	83	85	83	87	87	93	88	88	90	92
# L processed/kg>=0.8	80	75	75	77	76	77	77	79	78	79	77	81
Pop. Mean	1	1	1	1	1	1	1	1	1	1	1	1
Std. Deviation	0.3	0.3	0.3	0.3	0.3	0.3	0.3	0.3	0.3	0.3	0.3	0.3
% L processed/kg>=0.8	91%	90%	90%	91%	92%	89%	89%	85%	89%	90%	86%	88%



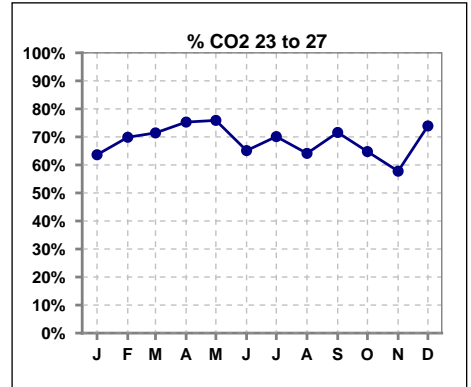
Methodology: a) All labs for 'Adequacy of Dialysis', 'Nutrition', 'Osteodystrophy', 'Anemia' and 'Diabetes' based on last value of month; b) BP's and #L processed are average of all values for month; c) Access data takes last access of month; d) Values for SGA and 'Infection Control' use most recent result.

**I. ADEQUACY OF DIALYSIS - CONT.**

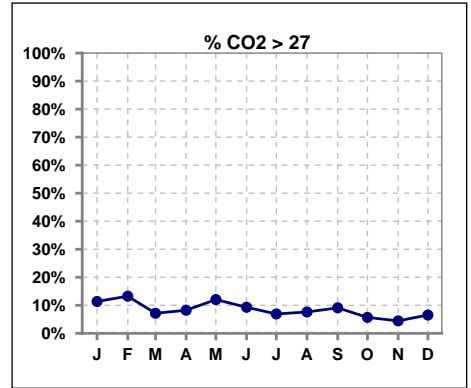
	Jan	Feb	Mar	Apr	May	Jun	Jul	Aug	Sep	Oct	Nov	Dec
# CO2	88	83	84	85	83	86	87	92	88	88	90	92
# CO2 < 23	22	14	18	14	10	22	20	26	17	26	34	18
Pop. Mean	24	25	24	24	25	24	24	24	24	24	23	24
Std. Deviation	2.92	2.82	2.43	2.38	2.25	2.59	2.56	2.39	2.20	2.32	2.32	2.35
% CO2 < 23	25%	17%	21%	16%	12%	26%	23%	28%	19%	30%	38%	20%



	Jan	Feb	Mar	Apr	May	Jun	Jul	Aug	Sep	Oct	Nov	Dec
# CO2	88	83	84	85	83	86	87	92	88	88	90	92
# CO2 23 to 27	56	58	60	64	63	56	61	59	63	57	52	68
Pop. Mean	24	25	24	24	25	24	24	24	24	24	23	24
Std. Deviation	2.92	2.82	2.43	2.38	2.25	2.59	2.56	2.39	2.20	2.32	2.32	2.35
% CO2 23 to 27	64%	70%	71%	75%	76%	65%	70%	64%	72%	65%	58%	74%



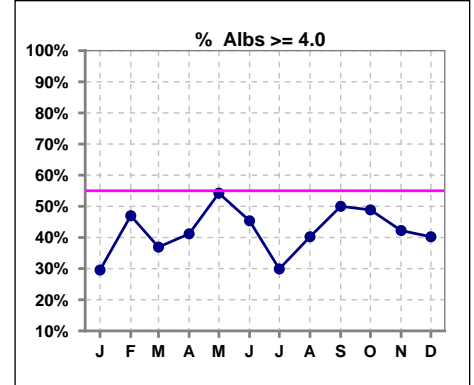
	Jan	Feb	Mar	Apr	May	Jun	Jul	Aug	Sep	Oct	Nov	Dec
# CO2	88	83	84	85	83	86	87	92	88	88	90	92
# CO2 > 27	10	11	6	7	10	8	6	7	8	5	4	6
Pop. Mean	24	25	24	24	25	24	24	24	24	24	23	24
Std. Deviation	2.92	2.82	2.43	2.38	2.25	2.59	2.56	2.39	2.20	2.32	2.32	2.35
% CO2 > 27	11%	13%	7%	8%	12%	9%	7%	8%	9%	6%	4%	7%



\*Albumin values use BCG method - as of July 2001

**II. NUTRITION**

	Jan	Feb	Mar	Apr	May	Jun	Jul	Aug	Sep	Oct	Nov	Dec
# Albumin	88	83	84	85	83	86	87	92	88	88	90	92
# Albumin >= 4.0	26	39	31	35	45	39	26	37	44	43	38	37
Pop. Mean	3.8	3.9	3.9	3.9	3.9	3.9	3.8	3.8	3.9	3.9	3.8	3.9
Std. Deviation	0.33	0.37	0.36	0.35	0.36	0.39	0.34	0.40	0.42	0.39	0.43	0.39
% Alb >= 4.0	30%	47%	37%	41%	54%	45%	30%	40%	50%	49%	42%	40%

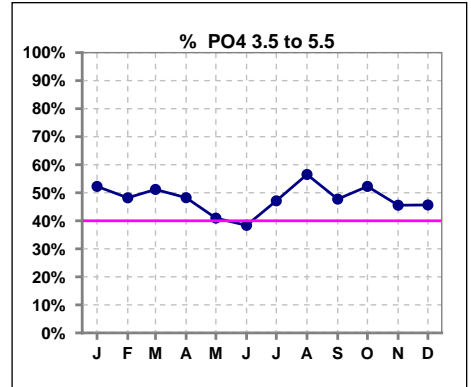


Methodology: a) All labs for 'Adequacy of Dialysis', 'Nutrition', 'Osteodystrophy', 'Anemia' and 'Diabetes' based on last value of month; b) BP's and #L processed are average of all values for month; c) Access data takes last access of month; d) Values for SGA and 'Infection Control' use most recent result.

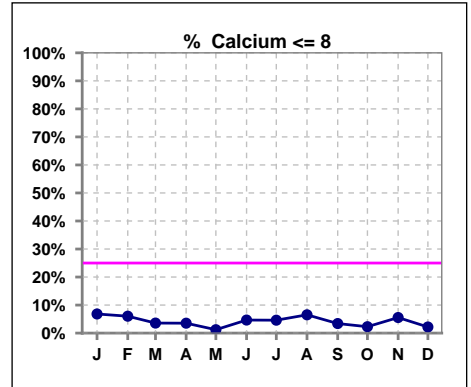
Lab methodology for PTH changed January 2012

**III. OSTEODYSTROPHY**

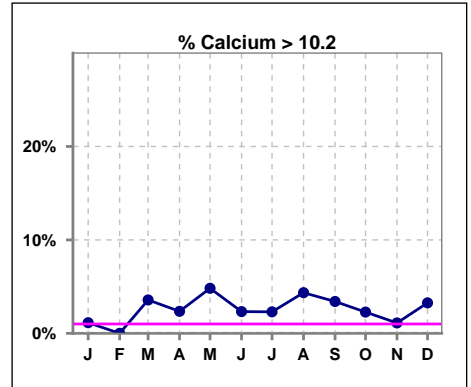
	Jan	Feb	Mar	Apr	May	Jun	Jul	Aug	Sep	Oct	Nov	Dec
# PO4	88	83	84	85	83	86	87	92	88	88	90	92
# PO4 3.5 to 5.5	46	40	43	41	34	33	41	52	42	46	41	42
Pop. Mean	5.5	5.7	5.6	5.7	5.7	5.9	5.7	5.4	5.6	5.4	6.0	5.8
Std. Deviation	1.61	1.67	1.71	1.45	1.73	1.80	1.57	1.70	1.67	1.53	1.79	1.67
% PO4 3.5 to 5.5	52%	48%	51%	48%	41%	38%	47%	57%	48%	52%	46%	46%



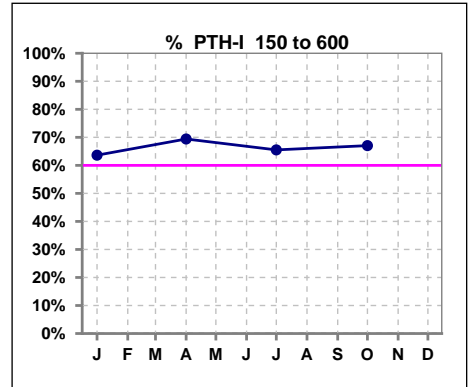
	Jan	Feb	Mar	Apr	May	Jun	Jul	Aug	Sep	Oct	Nov	Dec
# Calcium	88	83	84	85	83	86	87	92	88	88	90	92
# Calcium <= 8	6	5	3	3	1	4	4	6	3	2	5	2
Pop. Mean	9.1	9.2	9.3	9.3	9.4	9.3	9.2	9.2	9.3	9.3	9.2	9.3
Std. Deviation	0.65	0.59	0.57	0.60	0.71	0.61	0.66	0.68	0.62	0.53	0.65	0.74
% Calcium <= 8	7%	6%	4%	4%	1%	5%	5%	7%	3%	2%	6%	2%



	Jan	Feb	Mar	Apr	May	Jun	Jul	Aug	Sep	Oct	Nov	Dec
# Calcium	88	83	84	85	83	86	87	92	88	88	90	92
# Calcium > 10.2	1	0	3	2	4	2	2	4	3	2	1	3
Pop. Mean	9.1	9.2	9.3	9.3	9.4	9.3	9.2	9.2	9.3	9.3	9.2	9.3
Std. Deviation	0.65	0.59	0.57	0.60	0.71	0.61	0.66	0.68	0.62	0.53	0.65	0.74
% Calcium > 10.2	1%	0%	4%	2%	5%	2%	2%	4%	3%	2%	1%	3%



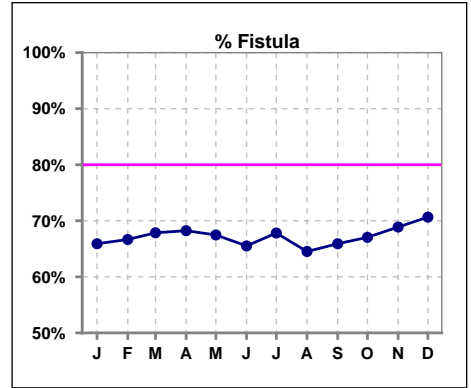
	Jan	Feb	Mar	Apr	May	Jun	Jul	Aug	Sep	Oct	Nov	Dec
# PTH-I	88			85			87			88		
# PTH-I 150 to 600	56			59			57			59		
Pop. Mean	389			412			326			388		
Std. Deviation	281			343			214			297		
% PTH-I 150 to 600	64%			69%			66%			67%		



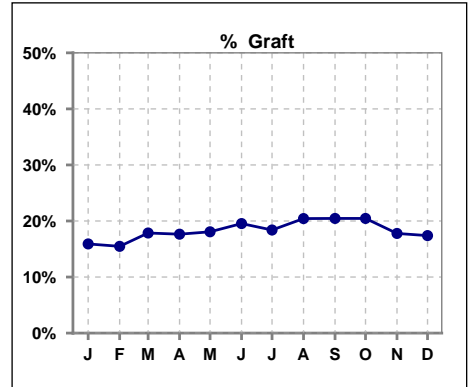
Methodology: a) All labs for 'Adequacy of Dialysis', 'Nutrition', 'Osteodystrophy', 'Anemia' and 'Diabetes' based on last value of month; b) BP's and #L processed are average of all values for month; c) Access data takes last access of month; d) Values for SGA and 'Infection Control' use most recent result.

**IV. ACCESS**

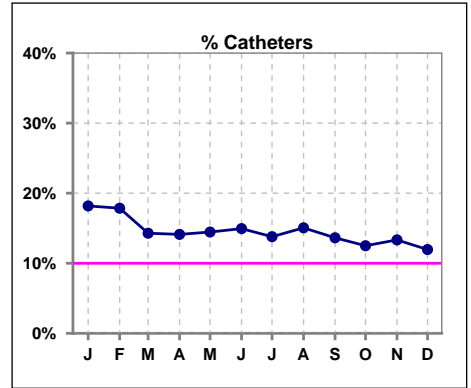
	Jan	Feb	Mar	Apr	May	Jun	Jul	Aug	Sep	Oct	Nov	Dec
# Access	88	84	84	85	83	87	87	93	88	88	90	92
# Fistula	58	56	57	58	56	57	59	60	58	59	62	65
% Fistula	66%	67%	68%	68%	67%	66%	68%	65%	66%	67%	69%	71%



	Jan	Feb	Mar	Apr	May	Jun	Jul	Aug	Sep	Oct	Nov	Dec
# Access	88	84	84	85	83	87	87	93	88	88	90	92
# Graft	14	13	15	15	15	17	16	19	18	18	16	16
% Graft	16%	15%	18%	18%	18%	20%	18%	20%	20%	20%	18%	17%



	Jan	Feb	Mar	Apr	May	Jun	Jul	Aug	Sep	Oct	Nov	Dec
# Access	88	84	84	85	83	87	87	93	88	88	90	92
# Catheters	16	15	12	12	12	13	12	14	12	11	12	11
% Catheters	18%	18%	14%	14%	14%	15%	14%	15%	14%	13%	13%	12%



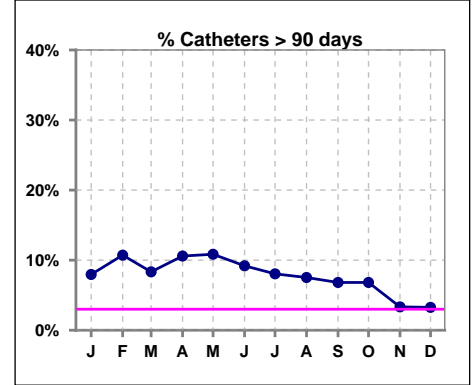
Methodology: a) All labs for 'Adequacy of Dialysis', 'Nutrition', 'Osteodystrophy', 'Anemia' and 'Diabetes' based on last value of month; b) BP's and #L processed are average of all values for month; c) Access data takes last access of month; d) Values for SGA and 'Infection Control' use most recent result.

**IV. ACCESS - CONT.**

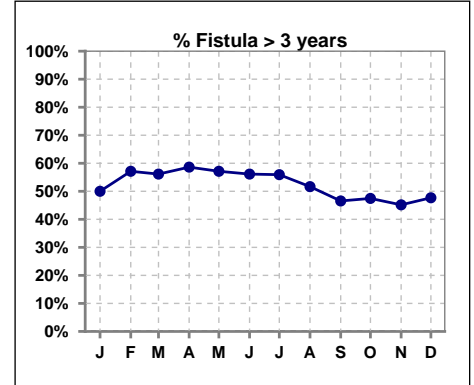
**Catheters > 90 days**

	Jan	Feb	Mar	Apr	May	Jun	Jul	Aug	Sep	Oct	Nov	Dec
# Access	88	84	84	85	83	87	87	93	88	88	90	92
# Catheters	7	9	7	9	9	8	7	7	6	6	3	3
<b>% Catheters</b>	<b>8%</b>	<b>11%</b>	<b>8%</b>	<b>11%</b>	<b>11%</b>	<b>9%</b>	<b>8%</b>	<b>8%</b>	<b>7%</b>	<b>7%</b>	<b>3%</b>	<b>3%</b>

Definition: Catheter in use on last treatment of the month



	Jan	Feb	Mar	Apr	May	Jun	Jul	Aug	Sep	Oct	Nov	Dec
# Fistula	58	56	57	58	56	57	59	60	58	59	62	65
# Fistula > 3 yrs	29	32	32	34	32	32	33	31	27	28	28	31
<b>% Fistula &gt; 3 yrs</b>	<b>50%</b>	<b>57%</b>	<b>56%</b>	<b>59%</b>	<b>57%</b>	<b>56%</b>	<b>56%</b>	<b>52%</b>	<b>47%</b>	<b>47%</b>	<b>45%</b>	<b>48%</b>

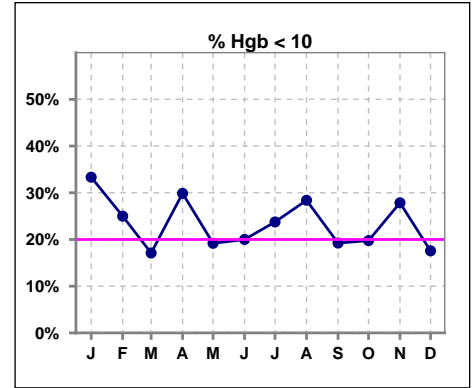


Methodology: a) All labs for 'Adequacy of Dialysis', 'Nutrition', 'Osteodystrophy', 'Anemia' and 'Diabetes' based on last value of month; b) BP's and #L processed are average of all values for month; c) Access data takes last access of month; d) Values for SGA and 'Infection Control' use most recent result.

**V. ANEMIA**

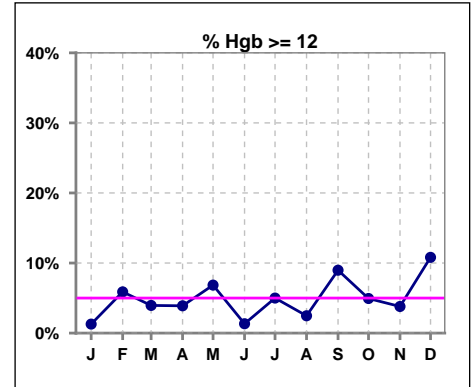
	Jan	Feb	Mar	Apr	May	Jun	Jul	Aug	Sep	Oct	Nov	Dec
# Hgb	78	68	76	77	73	75	80	81	78	81	79	74
# Hgb < 10	26	17	13	23	14	15	19	23	15	16	22	13
Pop. Mean	10.4	10.6	10.7	10.5	10.7	10.6	10.6	10.6	10.8	10.7	10.6	10.8
Std. Deviation	1.2	1.3	1.2	1.1	1.0	0.9	1.1	1.0	1.1	1.2	1.2	1.2
% Hgb < 10	33%	25%	17%	30%	19%	20%	24%	28%	19%	20%	28%	18%

Note: Excludes patients who received no ESA in month.



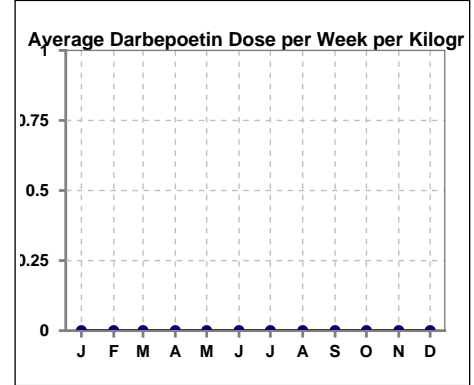
	Jan	Feb	Mar	Apr	May	Jun	Jul	Aug	Sep	Oct	Nov	Dec
# Hgb	78	68	76	77	73	75	80	81	78	81	79	74
# Hgb >= 12	1	4	3	3	5	1	4	2	7	4	3	8
Pop. Mean	10.4	10.6	10.7	10.5	10.7	10.6	10.6	10.6	10.8	10.7	10.6	10.8
Std. Deviation	1.2	1.3	1.2	1.1	1.0	0.9	1.1	1.0	1.1	1.2	1.2	1.2
% Hgb >= 12	1%	6%	4%	4%	7%	1%	5%	2%	9%	5%	4%	11%

Note: Excludes patients who received no ESA in month.



**Average Darbepoetin Dose per Week per Kilogram**

	Jan	Feb	Mar	Apr	May	Jun	Jul	Aug	Sep	Oct	Nov	Dec
# Average Darbepoetin	0	0	0	0	0	0	0	0	0	0	0	0

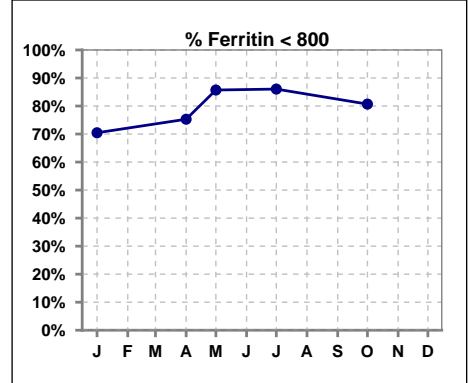




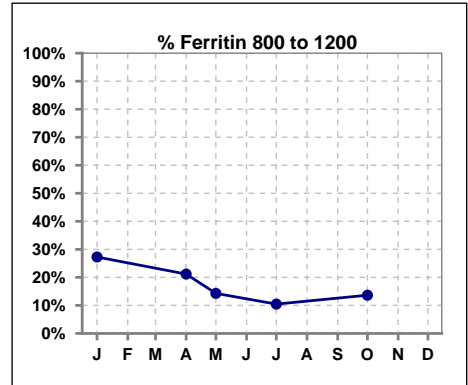
**V. ANEMIA - CONT.**

**Iron Profile**

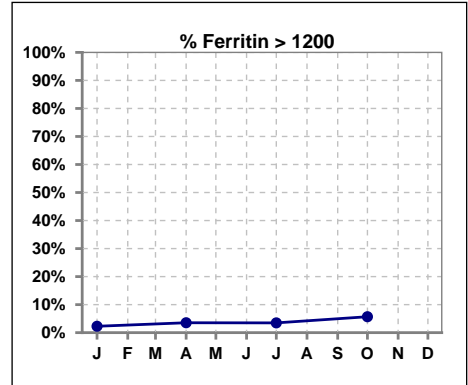
	Jan	Feb	Mar	Apr	May	Jun	Jul	Aug	Sep	Oct	Nov	Dec
# Ferritin	88			85	7		86			88		
# Ferritin < 800	62			64	6		74			71		
Pop. Mean	618			592	511		463			517		
Std. Deviation	308			327	323		306			345		
<b>% Ferritin &lt; 800</b>	<b>70%</b>			<b>75%</b>	<b>86%</b>		<b>86%</b>			<b>81%</b>		



	Jan	Feb	Mar	Apr	May	Jun	Jul	Aug	Sep	Oct	Nov	Dec
# Ferritin	88			85	7		86			88		
# Ferritin 800 to 1200	24			18	1		9			12		
Pop. Mean	618			592	511		463			517		
Std. Deviation	308			327	323		306			345		
<b>% Ferritin 800 to 1200</b>	<b>27%</b>			<b>21%</b>	<b>14%</b>		<b>10%</b>			<b>14%</b>		



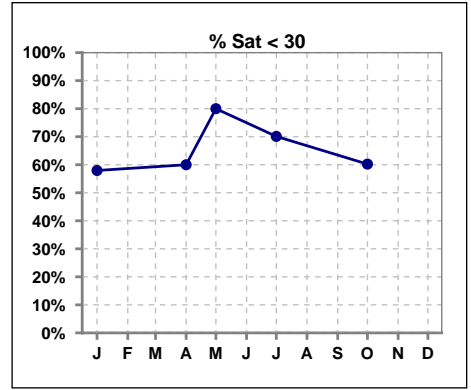
	Jan	Feb	Mar	Apr	May	Jun	Jul	Aug	Sep	Oct	Nov	Dec
# Ferritin	88			85	7		86			88		
# Ferritin > 1200	2			3			3			5		
Pop. Mean	618			592	511		463			517		
Std. Deviation	308			327	323		306			345		
<b>% Ferritin &gt; 1200</b>	<b>2%</b>			<b>4%</b>			<b>3%</b>			<b>6%</b>		



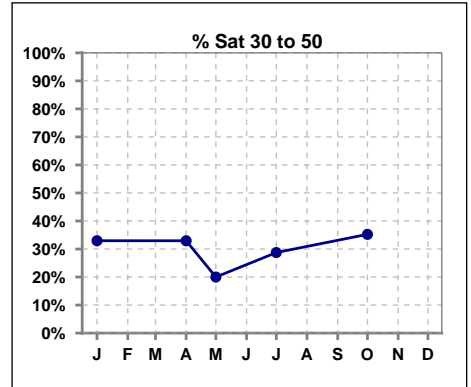
Methodology: a) All labs for 'Adequacy of Dialysis', 'Nutrition', 'Osteodystrophy', 'Anemia' and 'Diabetes' based on last value of month; b) BP's and #L processed are average of all values for month; c) Access data takes last access of month; d) Values for SGA and 'Infection Control' use most recent result.

**V. ANEMIA - CONT.**

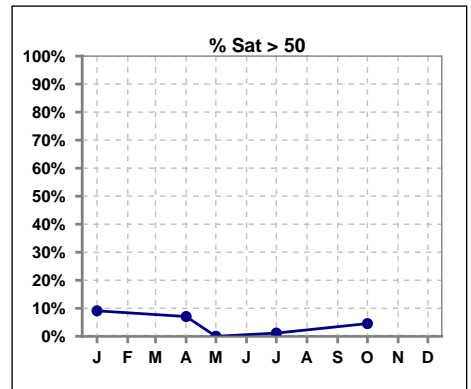
	Jan	Feb	Mar	Apr	May	Jun	Jul	Aug	Sep	Oct	Nov	Dec
# % Sat	88			85	10		87			88		
# % Sat < 30	51			51	8		61			53		
Pop. Mean	31			28	25		26			29		
Std. Deviation	17			14	11		10			13		
<b>% % Sat &lt; 30</b>	<b>58%</b>			<b>60%</b>	<b>80%</b>		<b>70%</b>			<b>60%</b>		



	Jan	Feb	Mar	Apr	May	Jun	Jul	Aug	Sep	Oct	Nov	Dec
# % Sat	88			85	10		87			88		
# % Sat 30 to 50	29			28	2		25			31		
Pop. Mean	31			28	25		26			29		
Std. Deviation	17			14	11		10			13		
<b>% % Sat 30 to 50</b>	<b>33%</b>			<b>33%</b>	<b>20%</b>		<b>29%</b>			<b>35%</b>		

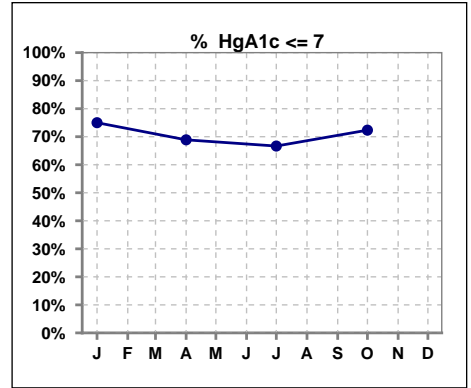


	Jan	Feb	Mar	Apr	May	Jun	Jul	Aug	Sep	Oct	Nov	Dec
# % Sat	88			85	10		87			88		
# % Sat > 50	8			6	0		1			4		
Pop. Mean	31			28	25		26			29		
Std. Deviation	17			14	11		10			13		
<b>% % Sat &gt; 50</b>	<b>9%</b>			<b>7%</b>	<b>0%</b>		<b>1%</b>			<b>5%</b>		



**VI. Diabetes**

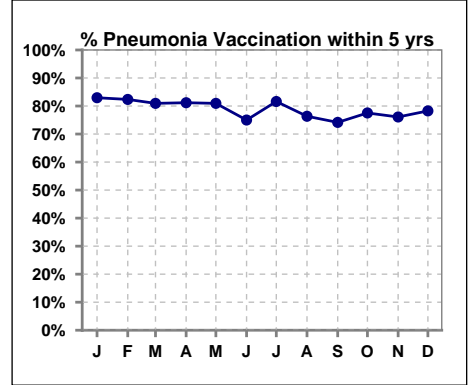
	Jan	Feb	Mar	Apr	May	Jun	Jul	Aug	Sep	Oct	Nov	Dec
# HgA1c	48			45			48			47		
# HgA1c <= 7	36			31			32			34		
Pop. Mean	6.4			6.4			6.4			6.6		
Std. Deviation	1.40			1.29			1.21			1.28		
<b>% HgA1c &lt;= 7</b>	<b>75%</b>			<b>69%</b>			<b>67%</b>			<b>72%</b>		



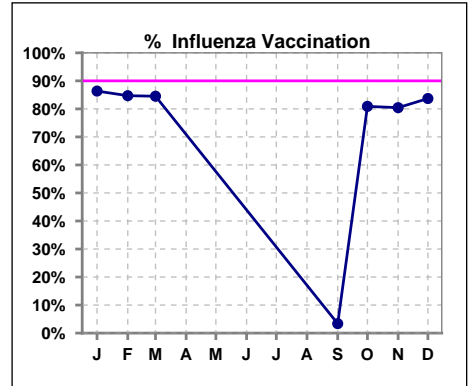
**VII. Infection Control**

**Pneumonia vaccination within the past five years**

	Jan	Feb	Mar	Apr	May	Jun	Jul	Aug	Sep	Oct	Nov	Dec
# Patient	88	85	84	85	84	88	87	93	89	89	92	92
# Pneumonia	73	70	68	69	68	66	71	71	66	69	70	72
% Pneumonia	83%	82%	81%	81%	81%	75%	82%	76%	74%	78%	76%	78%



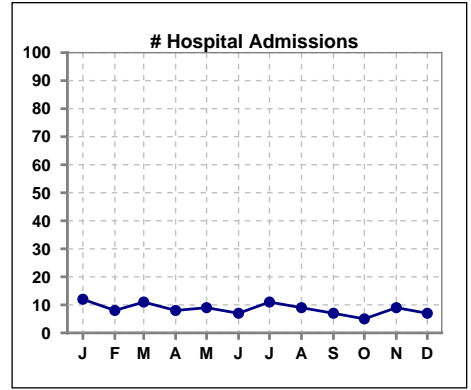
	Jan	Feb	Mar	Apr	May	Jun	Jul	Aug	Sep	Oct	Nov	Dec
# Patient	88	85	84						89	89	92	92
# Influenza	76	72	71						3	72	74	77
% Influenza	86%	85%	85%						3%	81%	80%	84%



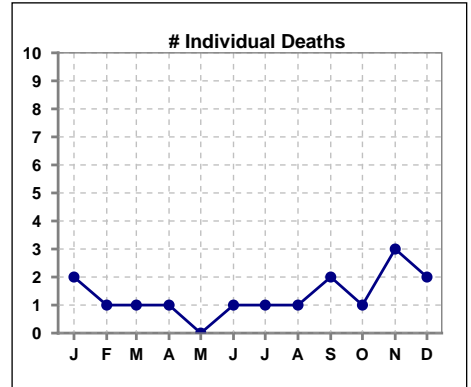
Methodology: a) All labs for 'Adequacy of Dialysis', 'Nutrition', 'Osteodystrophy', 'Anemia' and 'Diabetes' based on last value of month; b) BP's and #L processed are average of all values for month; c) Access data takes last access of month; d) Values for SGA and 'Infection Control' use most recent result.

**VIII. Outcome measures**

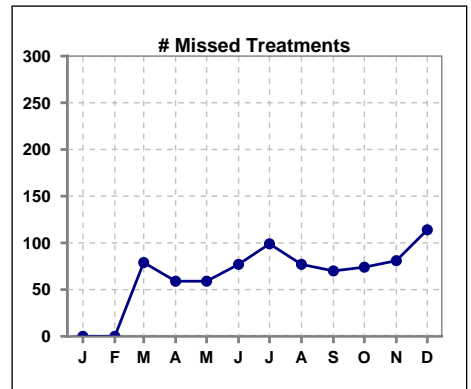
	Jan	Feb	Mar	Apr	May	Jun	Jul	Aug	Sep	Oct	Nov	Dec
# Patient	88	85	84	85	84	88	87	93	89	89	92	92
# Hospital Admissions	12	8	11	8	9	7	11	9	7	5	9	7



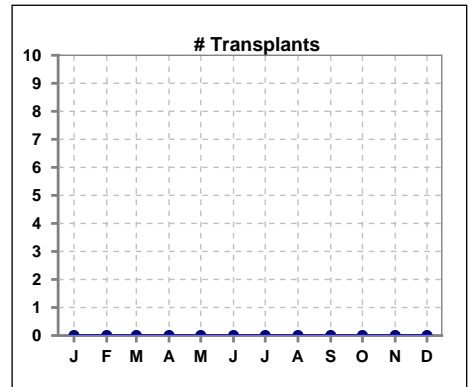
	Jan	Feb	Mar	Apr	May	Jun	Jul	Aug	Sep	Oct	Nov	Dec
# Patient	88	85	84	85	84	88	87	93	89	89	92	92
# Individual Deaths	2	1	1	1	0	1	1	1	2	1	3	2



	Jan	Feb	Mar	Apr	May	Jun	Jul	Aug	Sep	Oct	Nov	Dec
# Patient	88	85	84	85	84	88	87	93	89	89	92	92
# Missed Treatments	0	0	79	59	59	77	99	77	70	74	81	114



	Jan	Feb	Mar	Apr	May	Jun	Jul	Aug	Sep	Oct	Nov	Dec
# Patient	88	85	84	85	84	88	87	93	89	89	92	92
# Transplants	0	0	0	0	0	0	0	0	0	0	0	0



Methodology: a) All labs for 'Adequacy of Dialysis', 'Nutrition', 'Osteodystrophy', 'Anemia' and 'Diabetes' based on last value of month; b) BP's and #L processed are average of all values for month; c) Access data takes last access of month; d) Values for SGA and 'Infection Control' use most recent result.