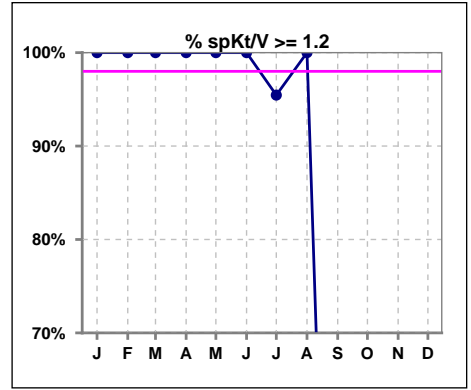
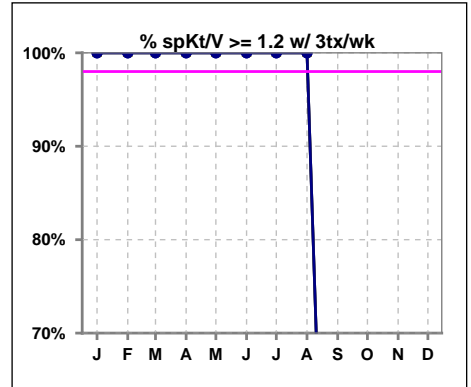


I. ADEQUACY OF DIALYSIS

	Jan	Feb	Mar	Apr	May	Jun	Jul	Aug	Sep	Oct	Nov	Dec
# spKt/V	38	37	39	38	37	35	22	11	0	0	0	0
# spKt/V >= 1.2	38	37	39	38	37	35	21	11	0	0	0	0
Pop. Mean	1.61	1.58	1.50	1.57	1.58	1.60	1.51	1.66	0	0	0	0
Std. Deviation	0.24	0.22	0.22	0.25	0.22	0.25	0.23	0.19	0	0	0	0
% spKt/V >= 1.2	100%	100%	100%	100%	100%	100%	95%	100%	0%	0%	0%	0%

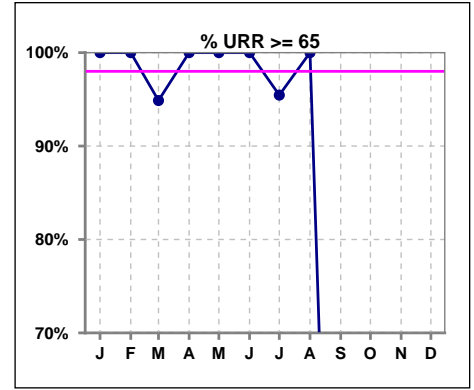


	Jan	Feb	Mar	Apr	May	Jun	Jul	Aug	Sep	Oct	Nov	Dec
# spKt/V w/ 3tx/wk	37	36	38	37	36	34	20	10	0	0	0	0
# spKt/V >= 1.2 w/3tx/wk	37	36	38	37	36	34	20	10	0	0	0	0
Pop. Mean	1.60	1.58	1.50	1.57	1.57	1.60	1.55	1.70	0	0	0	0
Std. Deviation	0.24	0.22	0.22	0.26	0.22	0.25	0.18	0.15	0	0	0	0
% >=1.2 w/3tx/wk	100%	100%	100%	100%	100%	100%	100%	100%	0%	0%	0%	0%

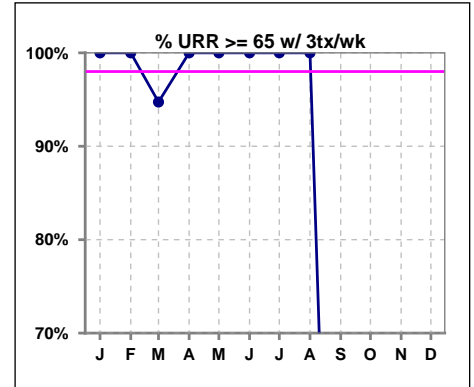


I. ADEQUACY OF DIALYSIS - CONT.

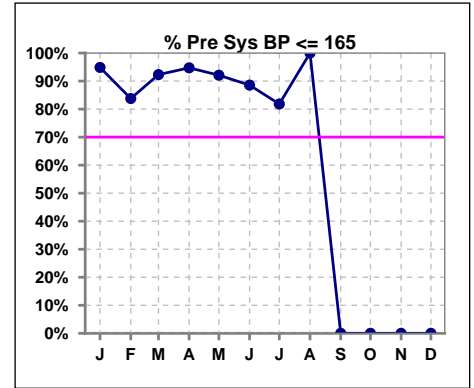
	Jan	Feb	Mar	Apr	May	Jun	Jul	Aug	Sep	Oct	Nov	Dec
# URR	38	37	39	38	37	35	22	11	0	0	0	0
# URR >= 65	38	37	37	38	37	35	21	11	0	0	0	0
Pop. Mean	75	74	72	74	74	75	73	76	0	0	0	0
Std. Deviation	4.74	4.50	4.80	5.13	4.39	5.02	6.19	4.65	0	0	0	0
% URR >= 65	100%	100%	95%	100%	100%	100%	95%	100%	0%	0%	0%	0%



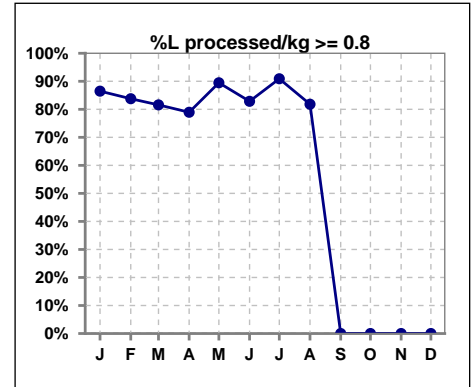
	Jan	Feb	Mar	Apr	May	Jun	Jul	Aug	Sep	Oct	Nov	Dec
# URR w/ 3tx/wk	37	36	38	37	36	34	20	10	0	0	0	0
# URR>=65 w/ 3tx/wk	37	36	36	37	36	34	20	10	0	0	0	0
Pop. Mean	75	74	72	74	74	75	74	77	0	0	0	0
Std. Deviation	4.69	4.56	4.82	5.16	4.42	5.09	4.15	3.57	0	0	0	0
% URR>=65 w/ 3tx/wk	100%	100%	95%	100%	100%	100%	100%	100%	0%	0%	0%	0%



	Jan	Feb	Mar	Apr	May	Jun	Jul	Aug	Sep	Oct	Nov	Dec
# Pre Sys BP	39	37	39	38	38	35	22	11	0	0	0	0
# Pre Sys BP <= 165	37	31	36	37	35	31	18	11	0	0	0	0
Pop. Mean	142	144	143	141	141	141	139	138	0	0	0	0
Std. Deviation	19.3	17.6	16.9	17.2	18.2	19.1	22.3	17.6	0	0	0	0
% Pre Sys BP <=165	95%	84%	92%	95%	92%	89%	82%	100%	0%	0%	0%	0%



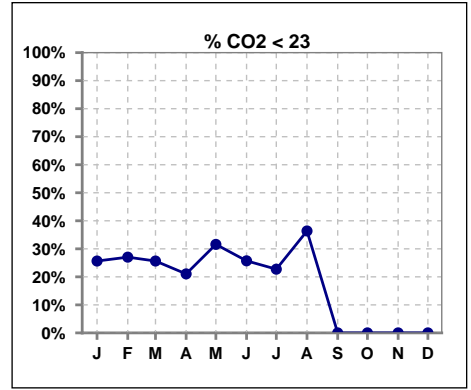
	Jan	Feb	Mar	Apr	May	Jun	Jul	Aug	Sep	Oct	Nov	Dec
# L processed/kg	37	37	38	38	38	35	22	11	0	0	0	0
# L processed/kg>=0.8	32	31	31	30	34	29	20	9	0	0	0	0
Pop. Mean	1	1	1	1	1	1	1	1	0	0	0	0
Std. Deviation	0.2	0.3	0.2	0.2	0.2	0.2	0.2	0.2	0	0	0	0
% L processed/kg>=0.8	86%	84%	82%	79%	89%	83%	91%	82%	0%	0%	0%	0%



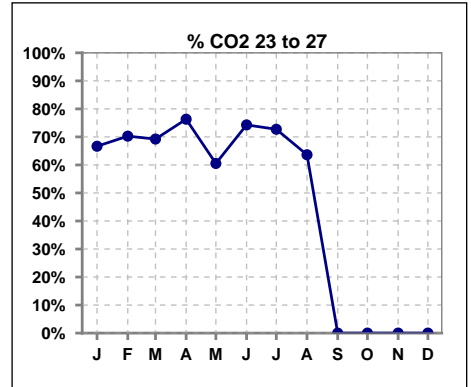
Methodology: a) All labs for 'Adequacy of Dialysis', 'Nutrition', 'Osteodystrophy', 'Anemia' and 'Diabetes' based on last value of month; b) BP's and #L processed are average of all values for month; c) Access data takes last access of month; d) Values for SGA and 'Infection Control' use most recent result.

I. ADEQUACY OF DIALYSIS - CONT.

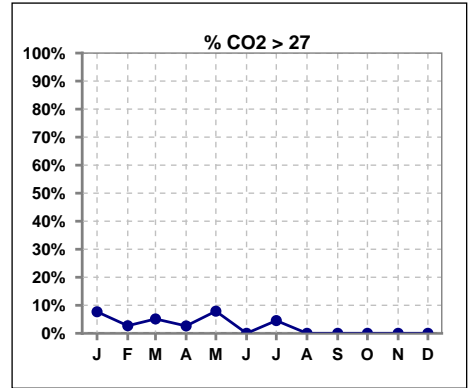
	Jan	Feb	Mar	Apr	May	Jun	Jul	Aug	Sep	Oct	Nov	Dec
# CO2	39	37	39	38	38	35	22	11	0	0	0	0
# CO2 < 23	10	10	10	8	12	9	5	4	0	0	0	0
Pop. Mean	24	24	24	24	24	24	24	23	0	0	0	0
Std. Deviation	2.62	2.85	2.47	2.80	2.44	2.00	2.04	2.24	0	0	0	0
% CO2 < 23	26%	27%	26%	21%	32%	26%	23%	36%	0%	0%	0%	0%



	Jan	Feb	Mar	Apr	May	Jun	Jul	Aug	Sep	Oct	Nov	Dec
# CO2	39	37	39	38	38	35	22	11	0	0	0	0
# CO2 23 to 27	26	26	27	29	23	26	16	7	0	0	0	0
Pop. Mean	24	24	24	24	24	24	24	23	0	0	0	0
Std. Deviation	2.62	2.85	2.47	2.80	2.44	2.00	2.04	2.24	0	0	0	0
% CO2 23 to 27	67%	70%	69%	76%	61%	74%	73%	64%	0%	0%	0%	0%



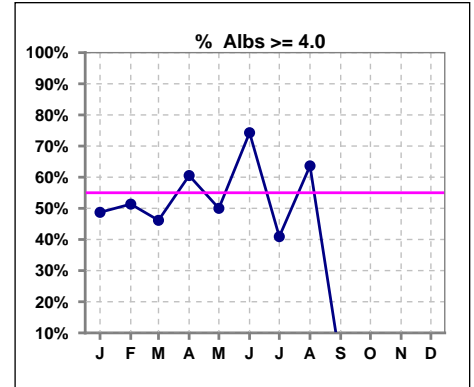
	Jan	Feb	Mar	Apr	May	Jun	Jul	Aug	Sep	Oct	Nov	Dec
# CO2	39	37	39	38	38	35	22	11	0	0	0	0
# CO2 > 27	3	1	2	1	3	0	1	0	0	0	0	0
Pop. Mean	24	24	24	24	24	24	24	23	0	0	0	0
Std. Deviation	2.62	2.85	2.47	2.80	2.44	2.00	2.04	2.24	0	0	0	0
% CO2 > 27	8%	3%	5%	3%	8%	0%	5%	0%	0%	0%	0%	0%



*Albumin values use BCG method - as of July 2001

II. NUTRITION

	Jan	Feb	Mar	Apr	May	Jun	Jul	Aug	Sep	Oct	Nov	Dec
# Albumin	39	37	39	38	38	35	22	11	0	0	0	0
# Albumin >= 4.0	19	19	18	23	19	26	9	7	0	0	0	0
Pop. Mean	3.9	3.9	3.9	4.0	4.0	4.1	3.9	3.9	0	0	0	0
Std. Deviation	0.36	0.38	0.30	0.38	0.28	0.39	0.26	0.56	0	0	0	0
% Alb >= 4.0	49%	51%	46%	61%	50%	74%	41%	64%	0%	0%	0%	0%

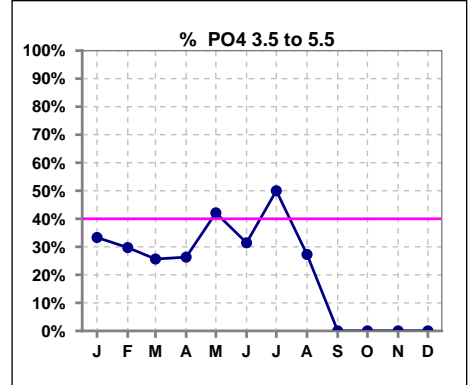


Methodology: a) All labs for 'Adequacy of Dialysis', 'Nutrition', 'Osteodystrophy', 'Anemia' and 'Diabetes' based on last value of month; b) BP's and #L processed are average of all values for month; c) Access data takes last access of month; d) Values for SGA and 'Infection Control' use most recent result.

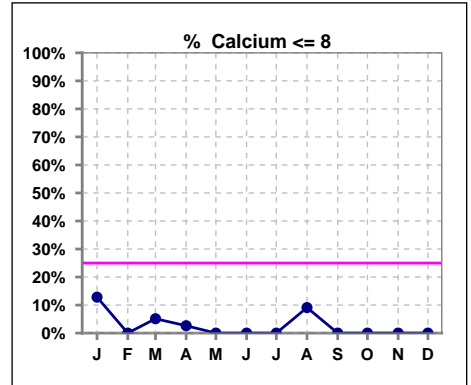
Lab methodology for PTH changed January 2012

III. OSTEODYSTROPHY

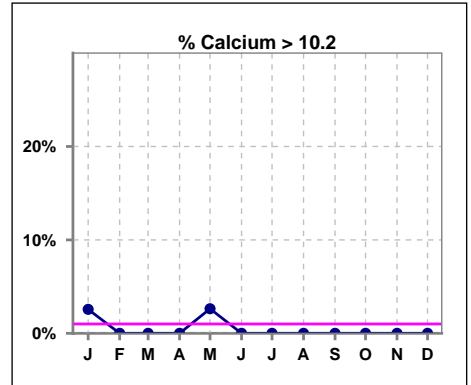
	Jan	Feb	Mar	Apr	May	Jun	Jul	Aug	Sep	Oct	Nov	Dec
# PO4	39	37	39	38	38	35	22	11	0	0	0	0
# PO4 3.5 to 5.5	13	11	10	10	16	11	11	3	0	0	0	0
Pop. Mean	6.4	6.5	6.6	6.4	6.3	6.7	6.0	5.9	0	0	0	0
Std. Deviation	1.77	1.66	1.39	1.98	2.00	1.90	1.54	1.00	0	0	0	0
% PO4 3.5 to 5.5	33%	30%	26%	26%	42%	31%	50%	27%	0%	0%	0%	0%



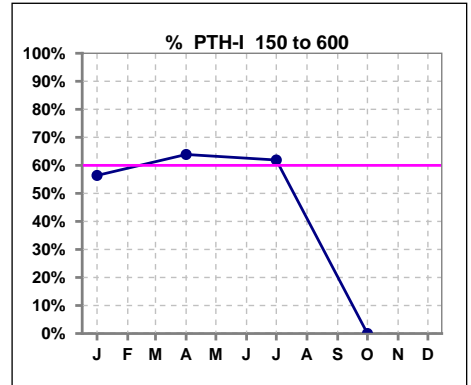
	Jan	Feb	Mar	Apr	May	Jun	Jul	Aug	Sep	Oct	Nov	Dec
# Calcium	39	37	39	38	38	35	22	11	0	0	0	0
# Calcium <= 8	5	0	2	1	0	0	0	1	0	0	0	0
Pop. Mean	9.1	9.3	9.2	9.3	9.4	9.5	9.3	9.1	0	0	0	0
Std. Deviation	0.78	0.51	0.64	0.57	0.48	0.45	0.33	0.92	0	0	0	0
% Calcium <= 8	13%	0%	5%	3%	0%	0%	0%	9%	0%	0%	0%	0%



	Jan	Feb	Mar	Apr	May	Jun	Jul	Aug	Sep	Oct	Nov	Dec
# Calcium	39	37	39	38	38	35	22	11	0	0	0	0
# Calcium > 10.2	1	0	0	0	1	0	0	0	0	0	0	0
Pop. Mean	9.1	9.3	9.2	9.3	9.4	9.5	9.3	9.1	0	0	0	0
Std. Deviation	0.78	0.51	0.64	0.57	0.48	0.45	0.33	0.92	0	0	0	0
% Calcium > 10.2	3%	0%	0%	0%	3%	0%	0%	0%	0%	0%	0%	0%



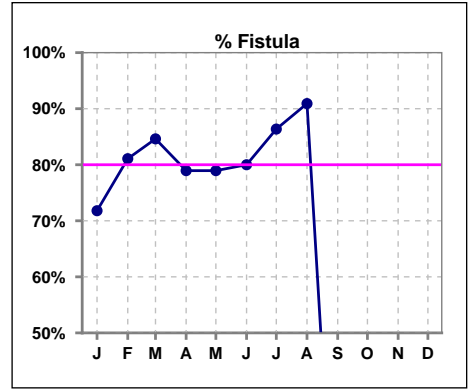
	Jan	Feb	Mar	Apr	May	Jun	Jul	Aug	Sep	Oct	Nov	Dec
# PTH-I	39			36			21			0		
# PTH-I 150 to 600	22			23			13			0		
Pop. Mean	581			535			518			0		
Std. Deviation	659			583			618			0		
% PTH-I 150 to 600	56%			64%			62%			0%		



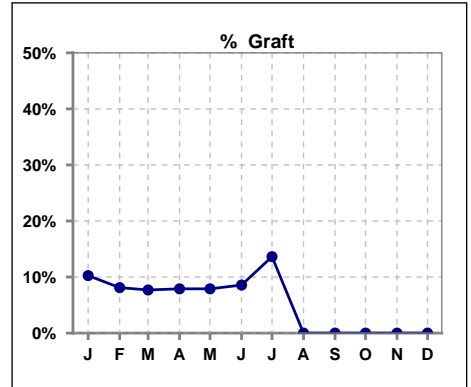
Methodology: a) All labs for 'Adequacy of Dialysis', 'Nutrition', 'Osteodystrophy', 'Anemia' and 'Diabetes' based on last value of month; b) BP's and #L processed are average of all values for month; c) Access data takes last access of month; d) Values for SGA and 'Infection Control' use most recent result.

IV. ACCESS

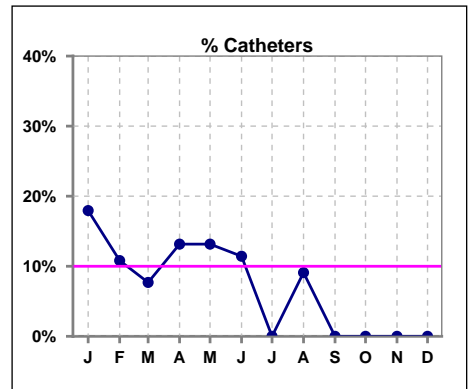
	Jan	Feb	Mar	Apr	May	Jun	Jul	Aug	Sep	Oct	Nov	Dec
# Access	39	37	39	38	38	35	22	11	0	0	0	0
# Fistula	28	30	33	30	30	28	19	10	0	0	0	0
% Fistula	72%	81%	85%	79%	79%	80%	86%	91%	0%	0%	0%	0%



	Jan	Feb	Mar	Apr	May	Jun	Jul	Aug	Sep	Oct	Nov	Dec
# Access	39	37	39	38	38	35	22	11	0	0	0	0
# Graft	4	3	3	3	3	3	3	0	0	0	0	0
% Graft	10%	8%	8%	8%	8%	9%	14%	0%	0%	0%	0%	0%



	Jan	Feb	Mar	Apr	May	Jun	Jul	Aug	Sep	Oct	Nov	Dec
# Access	39	37	39	38	38	35	22	11	0	0	0	0
# Catheters	7	4	3	5	5	4	0	1	0	0	0	0
% Catheters	18%	11%	8%	13%	13%	11%	0%	9%	0%	0%	0%	0%



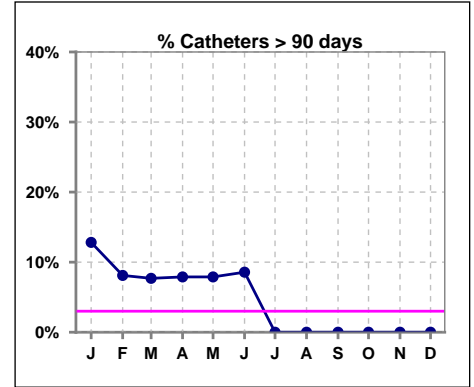
Methodology: a) All labs for 'Adequacy of Dialysis', 'Nutrition', 'Osteodystrophy', 'Anemia' and 'Diabetes' based on last value of month; b) BP's and #L processed are average of all values for month; c) Access data takes last access of month; d) Values for SGA and 'Infection Control' use most recent result.

IV. ACCESS - CONT.

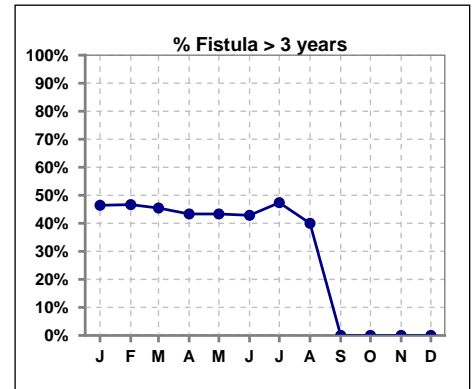
Catheters > 90 days

	Jan	Feb	Mar	Apr	May	Jun	Jul	Aug	Sep	Oct	Nov	Dec
# Access	39	37	39	38	38	35	22	11	0	0	0	0
# Catheters	5	3	3	3	3	3	0	0	0	0	0	0
% Catheters	13%	8%	8%	8%	8%	9%	0%	0%	0%	0%	0%	0%

Definition: Catheter in use on last treatment of the month



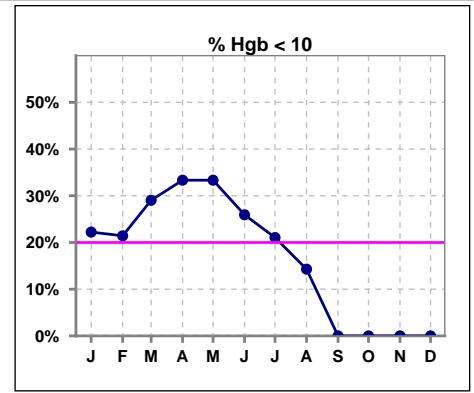
	Jan	Feb	Mar	Apr	May	Jun	Jul	Aug	Sep	Oct	Nov	Dec
# Fistula	28	30	33	30	30	28	19	10	0	0	0	0
# Fistula > 3 yrs	13	14	15	13	13	12	9	4	0	0	0	0
% Fistula > 3 yrs	46%	47%	45%	43%	43%	43%	47%	40%	0%	0%	0%	0%



V. ANEMIA

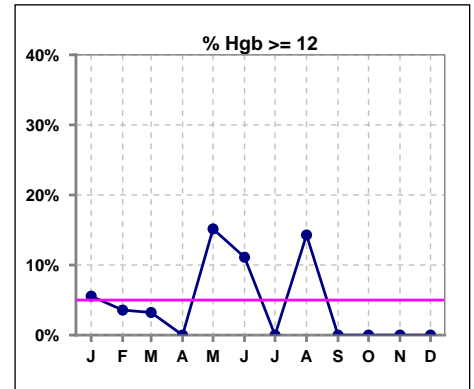
	Jan	Feb	Mar	Apr	May	Jun	Jul	Aug	Sep	Oct	Nov	Dec
# Hgb	36	28	31	30	33	27	19	7	0	0	0	0
# Hgb < 10	8	6	9	10	11	7	4	1	0	0	0	0
Pop. Mean	10.6	10.6	10.3	10.2	10.6	10.6	10.8	10.7	0	0	0	0
Std. Deviation	1.0	1.2	1.1	1.2	1.6	1.3	1.0	1.6	0	0	0	0
% Hgb < 10	22%	21%	29%	33%	33%	26%	21%	14%	0%	0%	0%	0%

Note: Excludes patients who received no ESA in month.



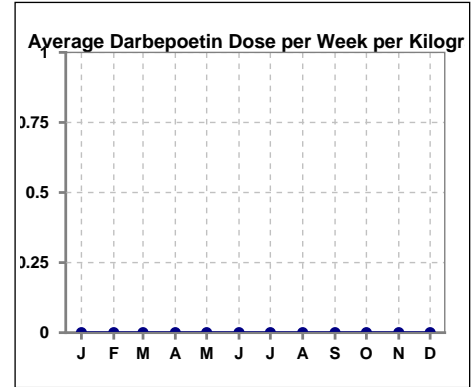
	Jan	Feb	Mar	Apr	May	Jun	Jul	Aug	Sep	Oct	Nov	Dec
# Hgb	36	28	31	30	33	27	19	7	0	0	0	0
# Hgb >= 12	2	1	1	0	5	3	0	1	0	0	0	0
Pop. Mean	10.6	10.6	10.3	10.2	10.6	10.6	10.8	10.7	0	0	0	0
Std. Deviation	1.0	1.2	1.1	1.2	1.6	1.3	1.0	1.6	0	0	0	0
% Hgb >= 12	6%	4%	3%	0%	15%	11%	0%	14%	0%	0%	0%	0%

Note: Excludes patients who received no ESA in month.



Average Darbepoetin Dose per Week per Kilogram

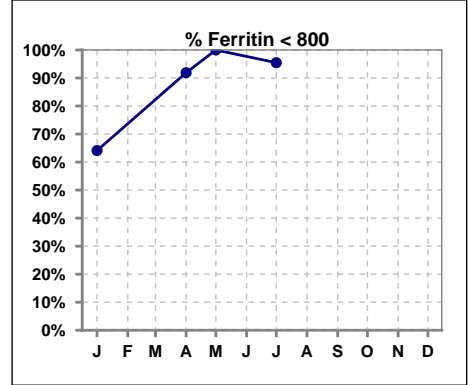
	Jan	Feb	Mar	Apr	May	Jun	Jul	Aug	Sep	Oct	Nov	Dec
# Average Darbepoetin	0	0	0	0	0	0	0	0	0	0	0	0



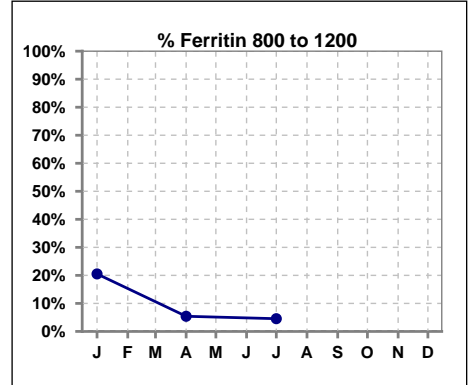
V. ANEMIA - CONT.

Iron Profile

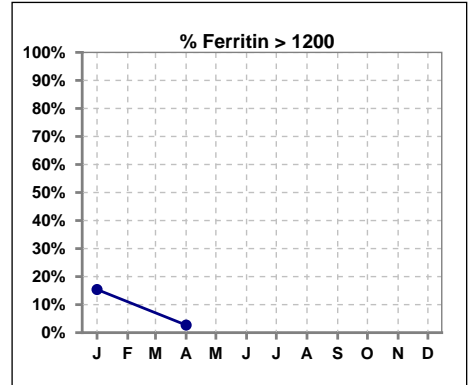
	Jan	Feb	Mar	Apr	May	Jun	Jul	Aug	Sep	Oct	Nov	Dec
# Ferritin	39			37	1		22					
# Ferritin < 800	25			34	1		21					
Pop. Mean	688			450	286		417					
Std. Deviation	474			293	0		206					
% Ferritin < 800	64%			92%	100%		95%					



	Jan	Feb	Mar	Apr	May	Jun	Jul	Aug	Sep	Oct	Nov	Dec
# Ferritin	39			37	1		22					
# Ferritin 800 to 1200	8			2			1					
Pop. Mean	688			450	286		417					
Std. Deviation	474			293	0		206					
% Ferritin 800 to 1200	21%			5%			5%					

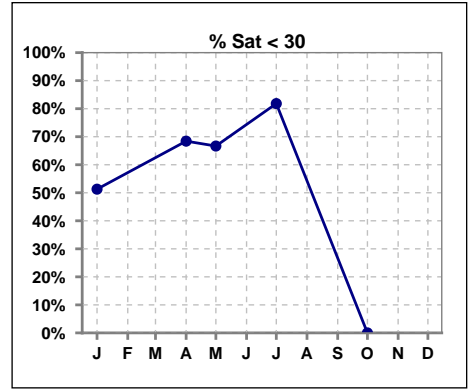


	Jan	Feb	Mar	Apr	May	Jun	Jul	Aug	Sep	Oct	Nov	Dec
# Ferritin	39			37	1		22					
# Ferritin > 1200	6			1								
Pop. Mean	688			450	286		417					
Std. Deviation	474			293	0		206					
% Ferritin > 1200	15%			3%								

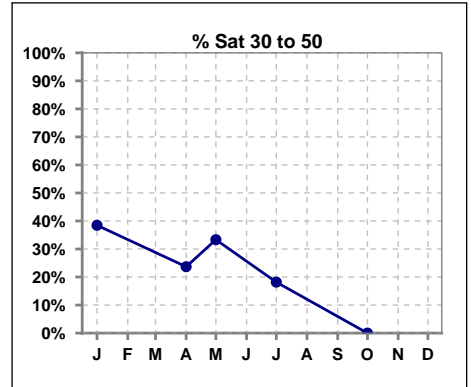


V. ANEMIA - CONT.

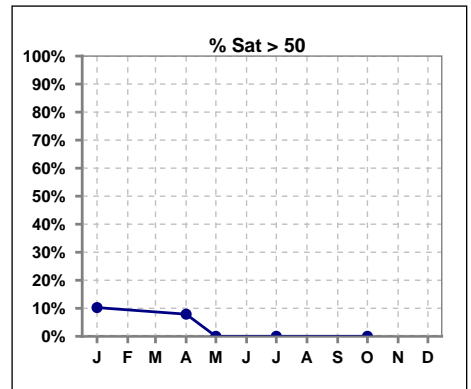
	Jan	Feb	Mar	Apr	May	Jun	Jul	Aug	Sep	Oct	Nov	Dec
# % Sat	39			38	3		22			0		
# % Sat < 30	20			26	2		18			0		
Pop. Mean	32			27	27		25			0		
Std. Deviation	16			18	13		8			0		
% % Sat < 30	51%			68%	67%		82%			0%		



	Jan	Feb	Mar	Apr	May	Jun	Jul	Aug	Sep	Oct	Nov	Dec
# % Sat	39			38	3		22			0		
# % Sat 30 to 50	15			9	1		4			0		
Pop. Mean	32			27	27		25			0		
Std. Deviation	16			18	13		8			0		
% % Sat 30 to 50	38%			24%	33%		18%			0%		

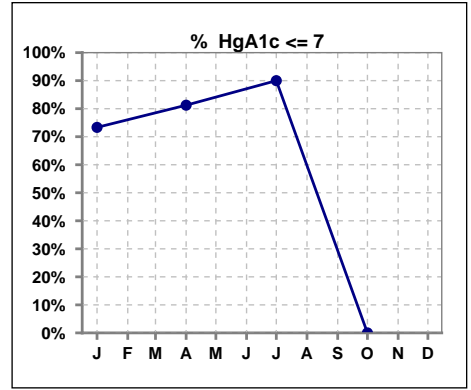


	Jan	Feb	Mar	Apr	May	Jun	Jul	Aug	Sep	Oct	Nov	Dec
# % Sat	39			38	3		22			0		
# % Sat > 50	4			3	0		0			0		
Pop. Mean	32			27	27		25			0		
Std. Deviation	16			18	13		8			0		
% % Sat > 50	10%			8%	0%		0%			0%		



VI. Diabetes

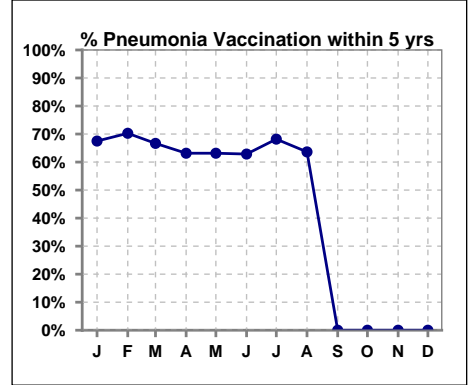
	Jan	Feb	Mar	Apr	May	Jun	Jul	Aug	Sep	Oct	Nov	Dec
# HgA1c	15			16			10			0		
# HgA1c <= 7	11			13			9			0		
Pop. Mean	6.3			6.1			6.1			0		
Std. Deviation	1.06			1.09			0.70			0		
% HgA1c <= 7	73%			81%			90%			0%		



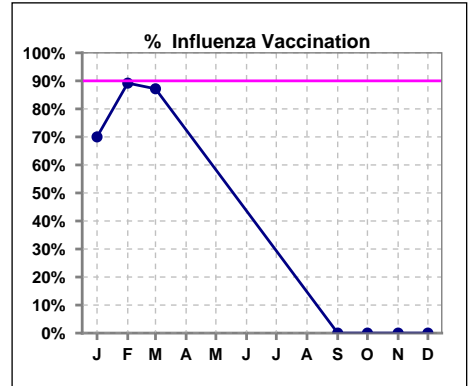
VII. Infection Control

Pneumonia vaccination within the past five years

	Jan	Feb	Mar	Apr	May	Jun	Jul	Aug	Sep	Oct	Nov	Dec
# Patient	40	37	39	38	38	35	22	11	0	0	0	0
# Pneumonia	27	26	26	24	24	22	15	7	0	0	0	0
% Pneumonia	68%	70%	67%	63%	63%	63%	68%	64%	0%	0%	0%	0%



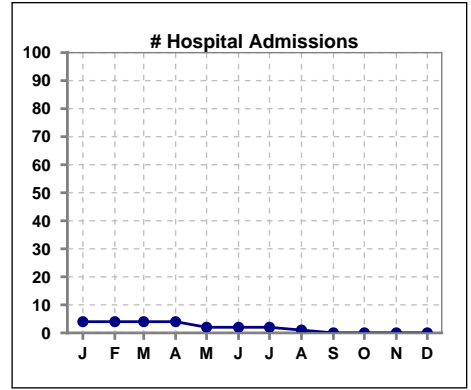
	Jan	Feb	Mar	Apr	May	Jun	Jul	Aug	Sep	Oct	Nov	Dec
# Patient	40	37	39						0	0	0	0
# Influenza	28	33	34						0	0	0	0
% Influenza	70%	89%	87%						0%	0%	0%	0%



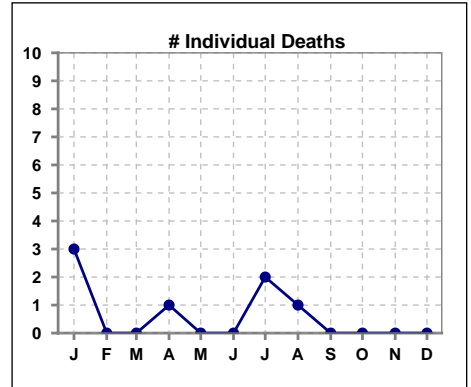
Methodology: a) All labs for 'Adequacy of Dialysis', 'Nutrition', 'Osteodystrophy', 'Anemia' and 'Diabetes' based on last value of month; b) BP's and #L processed are average of all values for month; c) Access data takes last access of month; d) Values for SGA and 'Infection Control' use most recent result.

VIII. Outcome measures

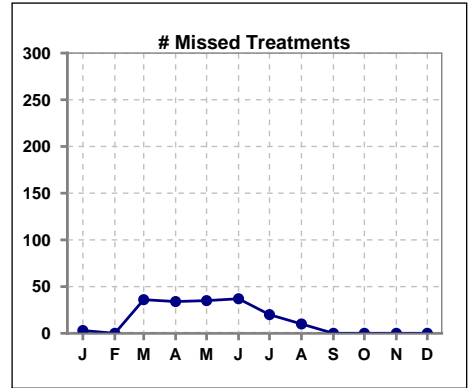
	Jan	Feb	Mar	Apr	May	Jun	Jul	Aug	Sep	Oct	Nov	Dec
# Patient	40	37	39	38	38	35	22	11	0	0	0	0
# Hospital Admissions	4	4	4	4	2	2	2	1	0	0	0	0



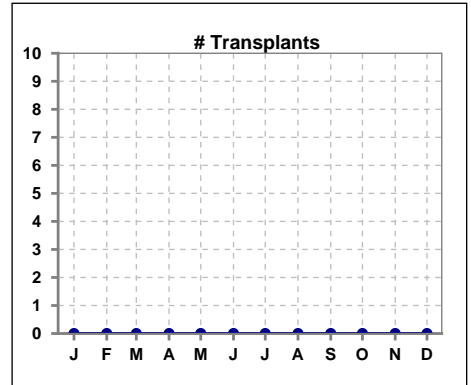
	Jan	Feb	Mar	Apr	May	Jun	Jul	Aug	Sep	Oct	Nov	Dec
# Patient	40	37	39	38	38	35	22	11	0	0	0	0
# Individual Deaths	3	0	0	1	0	0	2	1	0	0	0	0



	Jan	Feb	Mar	Apr	May	Jun	Jul	Aug	Sep	Oct	Nov	Dec
# Patient	40	37	39	38	38	35	22	11	0	0	0	0
# Missed Treatments	3	0	36	34	35	37	20	10	0	0	0	0



	Jan	Feb	Mar	Apr	May	Jun	Jul	Aug	Sep	Oct	Nov	Dec
# Patient	40	37	39	38	38	35	22	11	0	0	0	0
# Transplants	0	0	0	0	0	0	0	0	0	0	0	0



Methodology: a) All labs for 'Adequacy of Dialysis', 'Nutrition', 'Osteodystrophy', 'Anemia' and 'Diabetes' based on last value of month; b) BP's and #L processed are average of all values for month; c) Access data takes last access of month; d) Values for SGA and 'Infection Control' use most recent result.