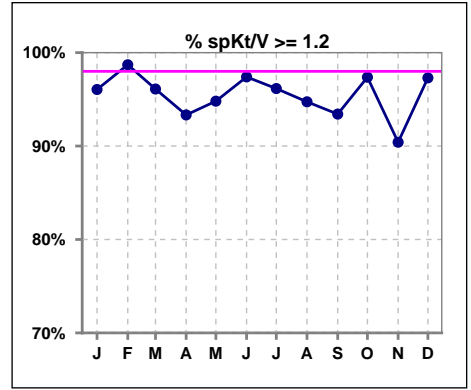
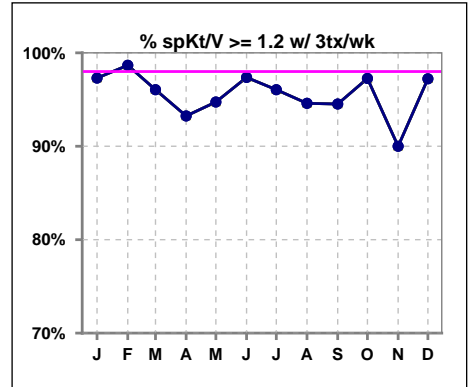


I. ADEQUACY OF DIALYSIS

	Jan	Feb	Mar	Apr	May	Jun	Jul	Aug	Sep	Oct	Nov	Dec
# spKt/V	76	77	77	75	77	77	78	76	76	76	73	74
# spKt/V >= 1.2	73	76	74	70	73	75	75	72	71	74	66	72
Pop. Mean	1.57	1.59	1.58	1.57	1.58	1.58	1.57	1.58	1.53	1.57	1.53	1.61
Std. Deviation	0.31	0.27	0.27	0.31	0.31	0.32	0.28	0.31	0.34	0.29	0.29	0.34
% spKt/V >= 1.2	96%	99%	96%	93%	95%	97%	96%	95%	93%	97%	90%	97%

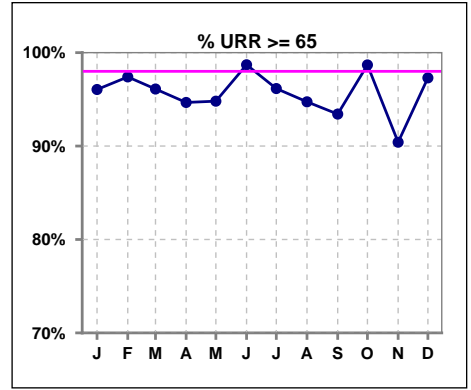


	Jan	Feb	Mar	Apr	May	Jun	Jul	Aug	Sep	Oct	Nov	Dec
# spKt/V w/ 3tx/wk	74	75	76	74	76	76	76	74	73	73	70	72
# spKt/V >= 1.2 w/3tx/wk	72	74	73	69	72	74	73	70	69	71	63	70
Pop. Mean	1.58	1.58	1.58	1.57	1.58	1.58	1.57	1.59	1.54	1.57	1.53	1.61
Std. Deviation	0.29	0.27	0.27	0.32	0.32	0.32	0.28	0.31	0.32	0.30	0.29	0.34
% >= 1.2 w/3tx/wk	97%	99%	96%	93%	95%	97%	96%	95%	95%	97%	90%	97%

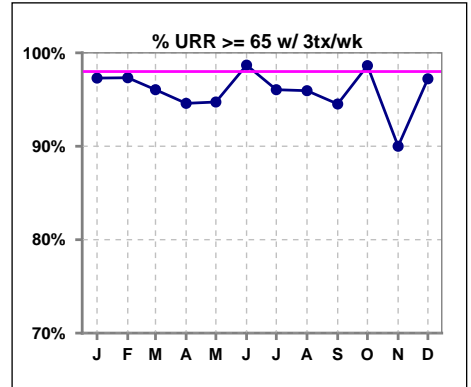


I. ADEQUACY OF DIALYSIS - CONT.

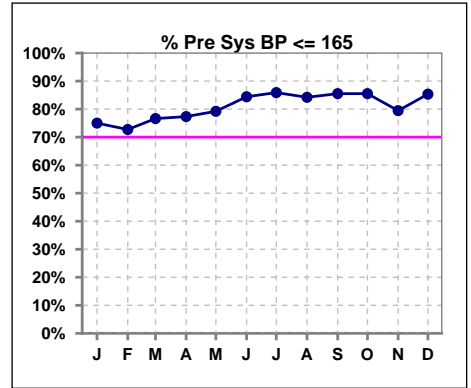
	Jan	Feb	Mar	Apr	May	Jun	Jul	Aug	Sep	Oct	Nov	Dec
# URR	76	77	77	75	77	77	78	76	76	76	73	74
# URR >= 65	73	75	74	71	73	76	75	72	71	75	66	72
Pop. Mean	73	74	74	74	74	74	74	74	73	74	73	74
Std. Deviation	8.46	5.56	5.28	6.28	6.13	5.79	6.51	7.33	7.39	6.07	6.66	7.14
% URR >= 65	96%	97%	96%	95%	95%	99%	96%	95%	93%	99%	90%	97%



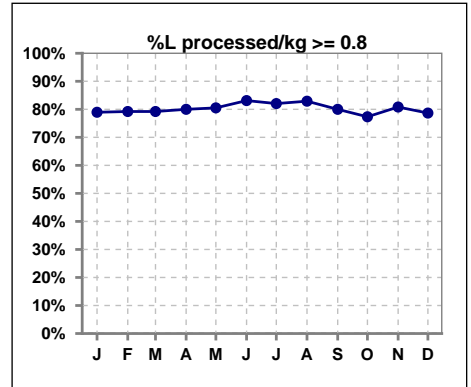
	Jan	Feb	Mar	Apr	May	Jun	Jul	Aug	Sep	Oct	Nov	Dec
# URR w/ 3tx/wk	74	75	76	74	76	76	76	74	73	73	70	72
# URR>=65 w/ 3tx/wk	72	73	73	70	72	75	73	71	69	72	63	70
Pop. Mean	74	74	74	74	74	74	74	74	73	74	73	74
Std. Deviation	7.28	5.58	5.30	6.30	6.15	5.80	6.56	7.26	6.21	6.18	6.73	7.17
% URR>=65 w/ 3tx/wk	97%	97%	96%	95%	95%	99%	96%	96%	95%	99%	90%	97%



	Jan	Feb	Mar	Apr	May	Jun	Jul	Aug	Sep	Oct	Nov	Dec
# Pre Sys BP	76	77	77	75	77	77	78	76	76	76	73	75
# Pre Sys BP <= 165	61	57	60	58	61	66	67	66	66	65	60	65
Pop. Mean	148	149	148	147	146	142	145	145	145	146	143	142
Std. Deviation	21.0	21.4	21.9	22.0	21.6	19.1	18.7	19.4	20.5	20.3	21.8	22.1
%Pre Sys BP <=165	75%	73%	77%	77%	79%	84%	86%	84%	86%	86%	79%	85%



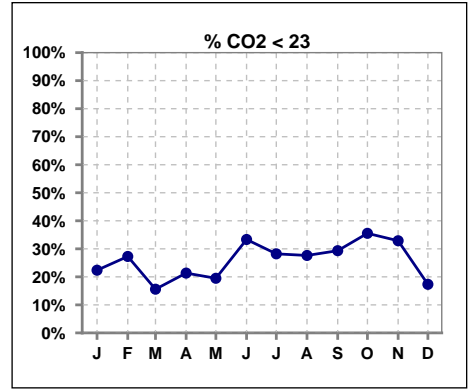
	Jan	Feb	Mar	Apr	May	Jun	Jul	Aug	Sep	Oct	Nov	Dec
# L processed/kg	76	77	77	75	77	77	78	76	75	75	73	75
# L processed/kg>=0.8	60	61	61	60	62	64	64	63	60	58	59	59
Pop. Mean	1	1	1	1	1	1	1	1	1	1	1	1
Std. Deviation	0.3	0.4	0.4	0.5	0.3	0.2	0.3	0.2	0.2	0.2	0.3	0.3
% L processed/kg>=0.8	79%	79%	79%	80%	81%	83%	82%	83%	80%	77%	81%	79%



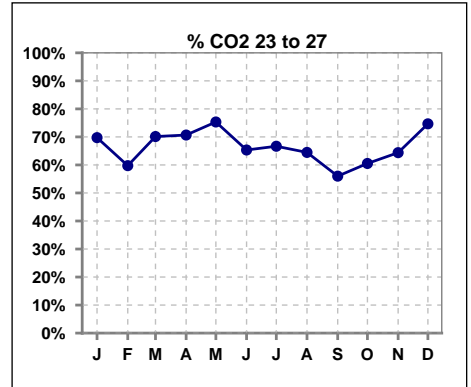
Methodology: a) All labs for 'Adequacy of Dialysis', 'Nutrition', 'Osteodystrophy', 'Anemia' and 'Diabetes' based on last value of month; b) BP's and #L processed are average of all values for month; c) Access data takes last access of month; d) Values for SGA and 'Infection Control' use most recent result.

I. ADEQUACY OF DIALYSIS - CONT.

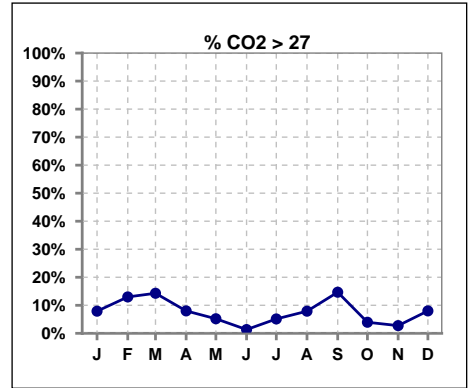
	Jan	Feb	Mar	Apr	May	Jun	Jul	Aug	Sep	Oct	Nov	Dec
# CO2	76	77	77	75	77	75	78	76	75	76	73	75
# CO2 < 23	17	21	12	16	15	25	22	21	22	27	24	13
Pop. Mean	24	24	25	24	24	24	24	24	24	23	23	25
Std. Deviation	2.94	2.96	2.90	2.67	3.47	2.41	2.48	3.04	3.26	2.96	2.85	2.67
% CO2 < 23	22%	27%	16%	21%	19%	33%	28%	28%	29%	36%	33%	17%



	Jan	Feb	Mar	Apr	May	Jun	Jul	Aug	Sep	Oct	Nov	Dec
# CO2	76	77	77	75	77	75	78	76	75	76	73	75
# CO2 23 to 27	53	46	54	53	58	49	52	49	42	46	47	56
Pop. Mean	24	24	25	24	24	24	24	24	24	23	23	25
Std. Deviation	2.94	2.96	2.90	2.67	3.47	2.41	2.48	3.04	3.26	2.96	2.85	2.67
% CO2 23 to 27	70%	60%	70%	71%	75%	65%	67%	64%	56%	61%	64%	75%



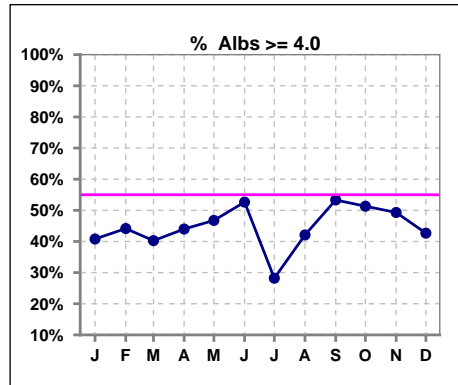
	Jan	Feb	Mar	Apr	May	Jun	Jul	Aug	Sep	Oct	Nov	Dec
# CO2	76	77	77	75	77	75	78	76	75	76	73	75
# CO2 > 27	6	10	11	6	4	1	4	6	11	3	2	6
Pop. Mean	24	24	25	24	24	24	24	24	24	23	23	25
Std. Deviation	2.94	2.96	2.90	2.67	3.47	2.41	2.48	3.04	3.26	2.96	2.85	2.67
% CO2 > 27	8%	13%	14%	8%	5%	1%	5%	8%	15%	4%	3%	8%



*Albumin values use BCG method - as of July 2001

II. NUTRITION

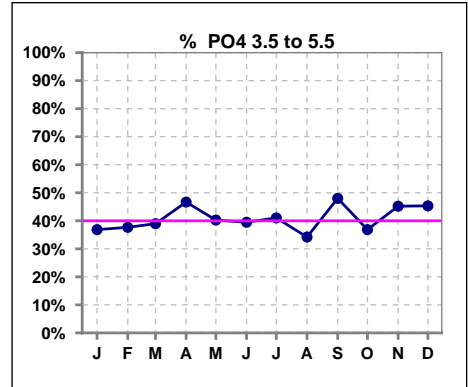
	Jan	Feb	Mar	Apr	May	Jun	Jul	Aug	Sep	Oct	Nov	Dec
# Albumin	76	77	77	75	77	76	78	76	75	76	73	75
# Albumin >= 4.0	31	34	31	33	36	40	22	32	40	39	36	32
Pop. Mean	3.8	3.8	3.9	3.9	3.9	3.9	3.8	3.8	3.9	3.9	3.8	3.8
Std. Deviation	0.37	0.38	0.38	0.42	0.47	0.50	0.42	0.43	0.42	0.41	0.53	0.44
% Alb >= 4.0	41%	44%	40%	44%	47%	53%	28%	42%	53%	51%	49%	43%



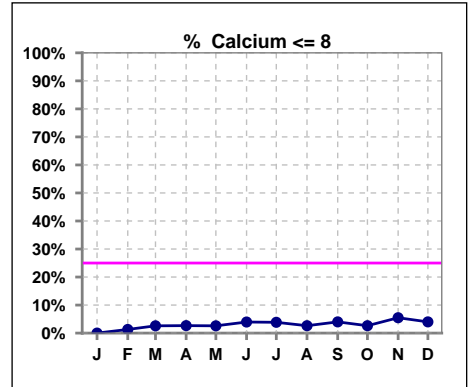
Lab methodology for PTH changed January 2012

III. OSTEODYSTROPHY

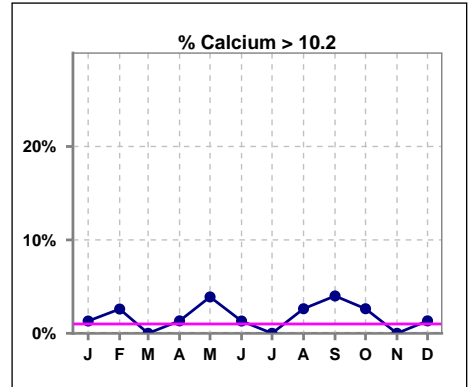
	Jan	Feb	Mar	Apr	May	Jun	Jul	Aug	Sep	Oct	Nov	Dec
# PO4	76	77	77	75	77	76	78	76	75	76	73	75
# PO4 3.5 to 5.5	28	29	30	35	31	30	32	26	36	28	33	34
Pop. Mean	6.1	6.0	5.9	6.0	6.1	6.1	6.1	6.1	5.8	6.0	6.0	6.1
Std. Deviation	1.96	1.88	1.81	1.93	1.89	1.91	1.91	2.01	1.81	1.95	2.22	2.26
% PO4 3.5 to 5.5	37%	38%	39%	47%	40%	39%	41%	34%	48%	37%	45%	45%



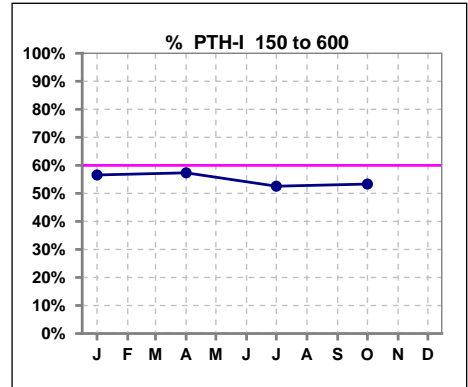
	Jan	Feb	Mar	Apr	May	Jun	Jul	Aug	Sep	Oct	Nov	Dec
# Calcium	76	77	77	75	77	76	78	76	75	76	73	75
# Calcium <= 8	0	1	2	2	2	3	3	2	3	2	4	3
Pop. Mean	9.2	9.2	9.2	9.2	9.2	9.2	9.2	9.1	9.2	9.2	9.1	9.2
Std. Deviation	0.59	0.63	0.59	0.63	0.77	0.64	0.66	0.63	0.69	0.56	0.65	0.68
% Calcium <= 8	0%	1%	3%	3%	3%	4%	4%	3%	4%	3%	5%	4%



	Jan	Feb	Mar	Apr	May	Jun	Jul	Aug	Sep	Oct	Nov	Dec
# Calcium	76	77	77	75	77	76	78	76	75	76	73	75
# Calcium > 10.2	1	2	0	1	3	1	0	2	3	2	0	1
Pop. Mean	9.2	9.2	9.2	9.2	9.2	9.2	9.2	9.1	9.2	9.2	9.1	9.2
Std. Deviation	0.59	0.63	0.59	0.63	0.77	0.64	0.66	0.63	0.69	0.56	0.65	0.68
% Calcium > 10.2	1%	3%	0%	1%	4%	1%	0%	3%	4%	3%	0%	1%



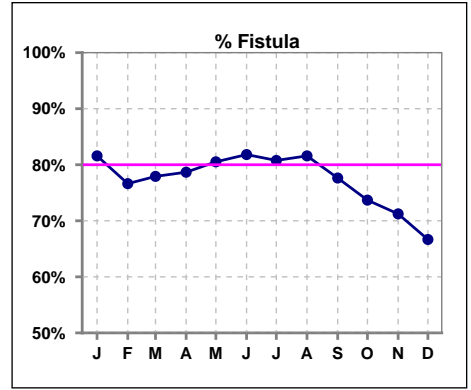
	Jan	Feb	Mar	Apr	May	Jun	Jul	Aug	Sep	Oct	Nov	Dec
# PTH-I	76			75			78			75		
# PTH-I 150 to 600	43			43			41			40		
Pop. Mean	522			497			452			535		
Std. Deviation	648			702			596			627		
% PTH-I 150 to 600	57%			57%			53%			53%		



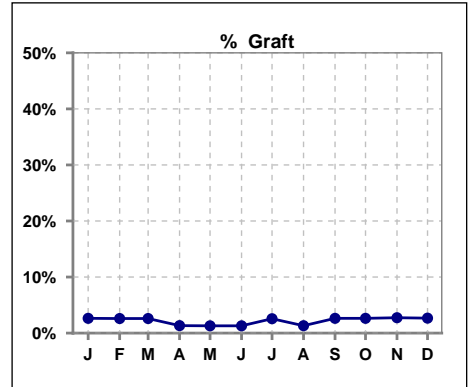
Methodology: a) All labs for 'Adequacy of Dialysis', 'Nutrition', 'Osteodystrophy', 'Anemia' and 'Diabetes' based on last value of month; b) BP's and #L processed are average of all values for month; c) Access data takes last access of month; d) Values for SGA and 'Infection Control' use most recent result.

IV. ACCESS

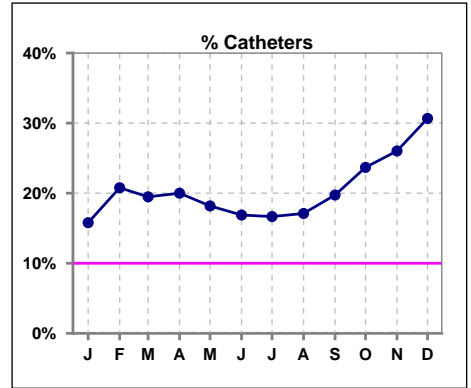
	Jan	Feb	Mar	Apr	May	Jun	Jul	Aug	Sep	Oct	Nov	Dec
# Access	76	77	77	75	77	77	78	76	76	76	73	75
# Fistula	62	59	60	59	62	63	63	62	59	56	52	50
% Fistula	82%	77%	78%	79%	81%	82%	81%	82%	78%	74%	71%	67%



	Jan	Feb	Mar	Apr	May	Jun	Jul	Aug	Sep	Oct	Nov	Dec
# Access	76	77	77	75	77	77	78	76	76	76	73	75
# Graft	2	2	2	1	1	1	2	1	2	2	2	2
% Graft	3%	3%	3%	1%	1%	1%	3%	1%	3%	3%	3%	3%



	Jan	Feb	Mar	Apr	May	Jun	Jul	Aug	Sep	Oct	Nov	Dec
# Access	76	77	77	75	77	77	78	76	76	76	73	75
# Catheters	12	16	15	15	14	13	13	13	15	18	19	23
% Catheters	16%	21%	19%	20%	18%	17%	17%	17%	20%	24%	26%	31%



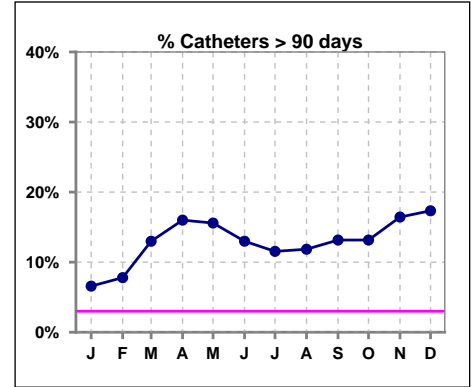
Methodology: a) All labs for 'Adequacy of Dialysis', 'Nutrition', 'Osteodystrophy', 'Anemia' and 'Diabetes' based on last value of month; b) BP's and #L processed are average of all values for month; c) Access data takes last access of month; d) Values for SGA and 'Infection Control' use most recent result.

IV. ACCESS - CONT.

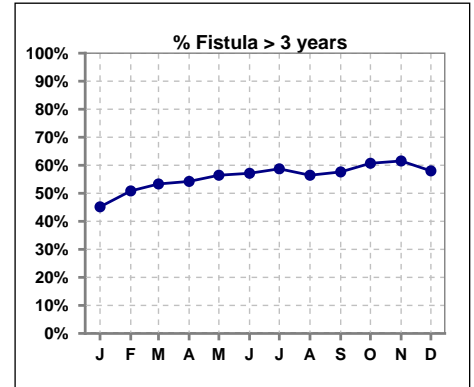
Catheters > 90 days

	Jan	Feb	Mar	Apr	May	Jun	Jul	Aug	Sep	Oct	Nov	Dec
# Access	76	77	77	75	77	77	78	76	76	76	73	75
# Catheters	5	6	10	12	12	10	9	9	10	10	12	13
% Catheters	7%	8%	13%	16%	16%	13%	12%	12%	13%	13%	16%	17%

Definition: Catheter in use on last treatment of the month



	Jan	Feb	Mar	Apr	May	Jun	Jul	Aug	Sep	Oct	Nov	Dec
# Fistula	62	59	60	59	62	63	63	62	59	56	52	50
# Fistula > 3 yrs	28	30	32	32	35	36	37	35	34	34	32	29
% Fistula > 3 yrs	45%	51%	53%	54%	56%	57%	59%	56%	58%	61%	62%	58%

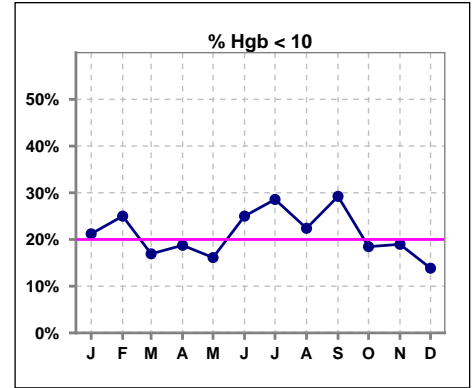


Methodology: a) All labs for 'Adequacy of Dialysis', 'Nutrition', 'Osteodystrophy', 'Anemia' and 'Diabetes' based on last value of month; b) BP's and #L processed are average of all values for month; c) Access data takes last access of month; d) Values for SGA and 'Infection Control' use most recent result.

V. ANEMIA

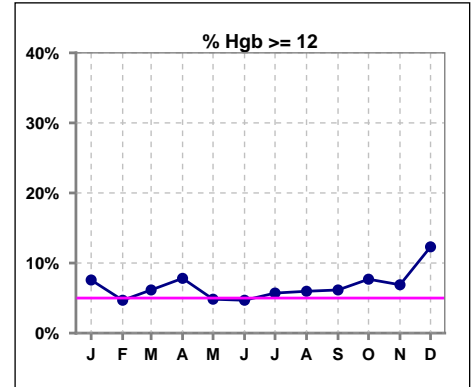
	Jan	Feb	Mar	Apr	May	Jun	Jul	Aug	Sep	Oct	Nov	Dec
# Hgb	66	64	65	64	62	64	70	67	65	65	58	65
# Hgb < 10	14	16	11	12	10	16	20	15	19	12	11	9
Pop. Mean	10.5	10.3	10.6	10.7	10.6	10.4	10.3	10.4	10.3	10.6	10.5	10.7
Std. Deviation	1.3	1.2	1.2	1.2	1.3	1.2	1.6	1.5	1.4	1.2	1.3	1.2
% Hgb < 10	21%	25%	17%	19%	16%	25%	29%	22%	29%	18%	19%	14%

Note: Excludes patients who received no ESA in month.



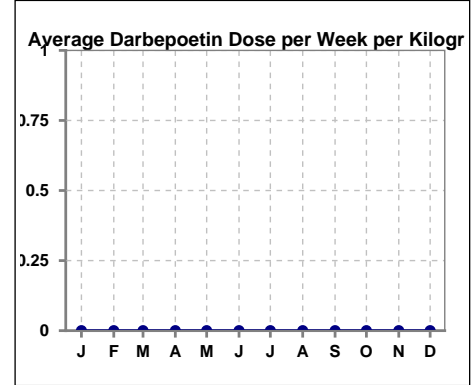
	Jan	Feb	Mar	Apr	May	Jun	Jul	Aug	Sep	Oct	Nov	Dec
# Hgb	66	64	65	64	62	64	70	67	65	65	58	65
# Hgb >= 12	5	3	4	5	3	3	4	4	4	5	4	8
Pop. Mean	10.5	10.3	10.6	10.7	10.6	10.4	10.3	10.4	10.3	10.6	10.5	10.7
Std. Deviation	1.3	1.2	1.2	1.2	1.3	1.2	1.6	1.5	1.4	1.2	1.3	1.2
% Hgb >= 12	8%	5%	6%	8%	5%	5%	6%	6%	6%	8%	7%	12%

Note: Excludes patients who received no ESA in month.



Average Darbepoetin Dose per Week per Kilogram

	Jan	Feb	Mar	Apr	May	Jun	Jul	Aug	Sep	Oct	Nov	Dec
# Average Darbepoetin	0	0	0	0	0	0	0	0	0	0	0	0

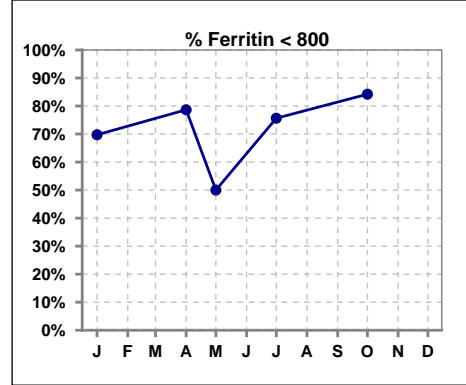


Methodology: a) All labs for 'Adequacy of Dialysis', 'Nutrition', 'Osteodystrophy', 'Anemia' and 'Diabetes' based on last value of month; b) BP's and #L processed are average of all values for month; c) Access data takes last access of month; d) Values for SGA and 'Infection Control' use most recent result.

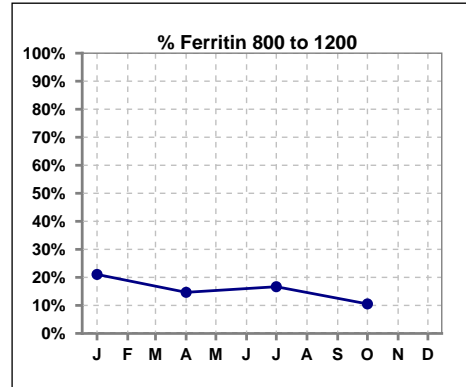
V. ANEMIA - CONT.

Iron Profile

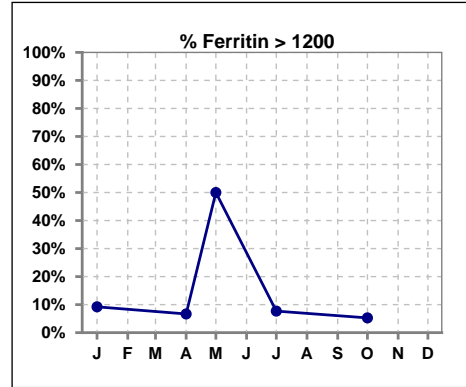
	Jan	Feb	Mar	Apr	May	Jun	Jul	Aug	Sep	Oct	Nov	Dec
# Ferritin	76			75	2		78			76		
# Ferritin < 800	53			59	1		59			64		
Pop. Mean	634			515	898		544			566		
Std. Deviation	491			371	1028		417			1033		
% Ferritin < 800	70%			79%	50%		76%			84%		



	Jan	Feb	Mar	Apr	May	Jun	Jul	Aug	Sep	Oct	Nov	Dec
# Ferritin	76			75	2		78			76		
# Ferritin 800 to 1200	16			11			13			8		
Pop. Mean	634			515	898		544			566		
Std. Deviation	491			371	1028		417			1033		
% Ferritin 800 to 1200	21%			15%			17%			11%		

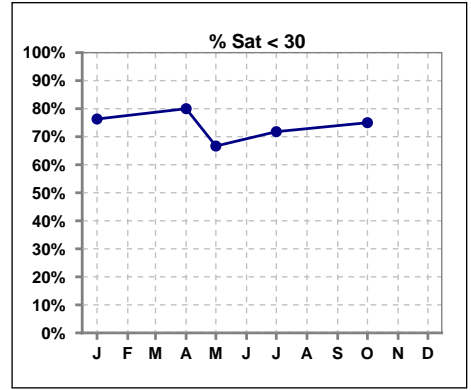


	Jan	Feb	Mar	Apr	May	Jun	Jul	Aug	Sep	Oct	Nov	Dec
# Ferritin	76			75	2		78			76		
# Ferritin > 1200	7			5	1		6			4		
Pop. Mean	634			515	898		544			566		
Std. Deviation	491			371	1028		417			1033		
% Ferritin > 1200	9%			7%	50%		8%			5%		

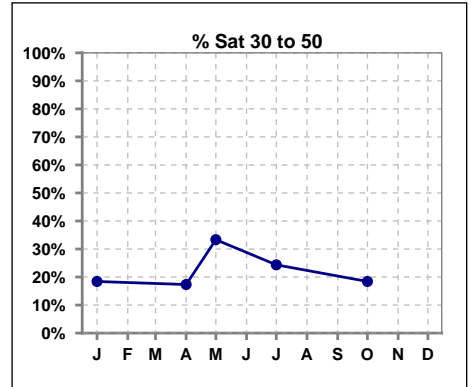


V. ANEMIA - CONT.

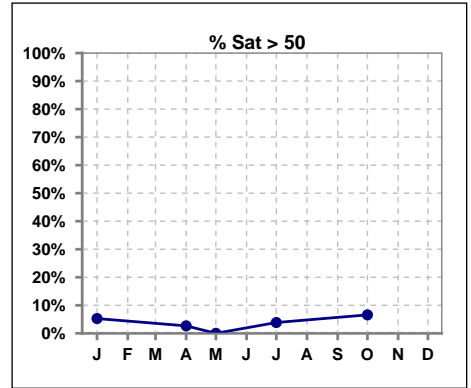
	Jan	Feb	Mar	Apr	May	Jun	Jul	Aug	Sep	Oct	Nov	Dec
# % Sat	76			75	3		78			76		
# % Sat < 30	58			60	2		56			57		
Pop. Mean	25			23	27		26			26		
Std. Deviation	15			13	8		14			13		
% % Sat < 30	76%			80%	67%		72%			75%		



	Jan	Feb	Mar	Apr	May	Jun	Jul	Aug	Sep	Oct	Nov	Dec
# % Sat	76			75	3		78			76		
# % Sat 30 to 50	14			13	1		19			14		
Pop. Mean	25			23	27		26			26		
Std. Deviation	15			13	8		14			13		
% % Sat 30 to 50	18%			17%	33%		24%			18%		

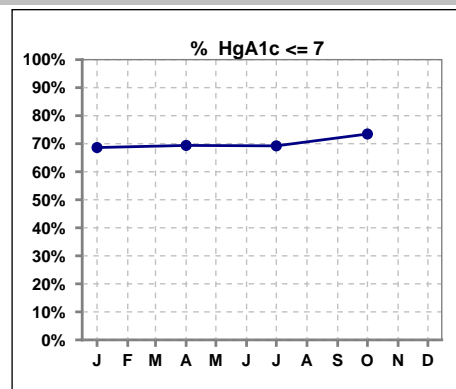


	Jan	Feb	Mar	Apr	May	Jun	Jul	Aug	Sep	Oct	Nov	Dec
# % Sat	76			75	3		78			76		
# % Sat > 50	4			2	0		3			5		
Pop. Mean	25			23	27		26			26		
Std. Deviation	15			13	8		14			13		
% % Sat > 50	5%			3%	0%		4%			7%		



VI. Diabetes

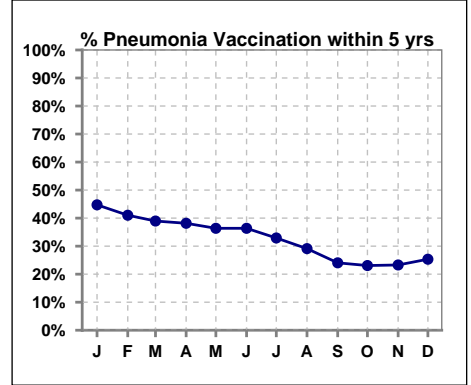
	Jan	Feb	Mar	Apr	May	Jun	Jul	Aug	Sep	Oct	Nov	Dec
# HgA1c	51			49			52			49		
# HgA1c <= 7	35			34			36			36		
Pop. Mean	6.8			6.6			6.6			6.5		
Std. Deviation	1.39			1.49			1.62			1.35		
% HgA1c <= 7	69%			69%			69%			73%		



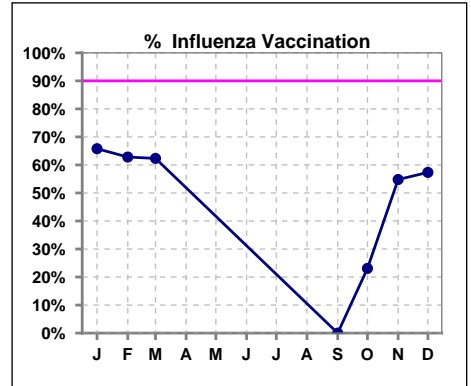
VII. Infection Control

Pneumonia vaccination within the past five years

	Jan	Feb	Mar	Apr	May	Jun	Jul	Aug	Sep	Oct	Nov	Dec
# Patient	76	78	77	76	77	77	79	79	79	78	73	75
# Pneumonia	34	32	30	29	28	28	26	23	19	18	17	19
% Pneumonia	45%	41%	39%	38%	36%	36%	33%	29%	24%	23%	23%	25%



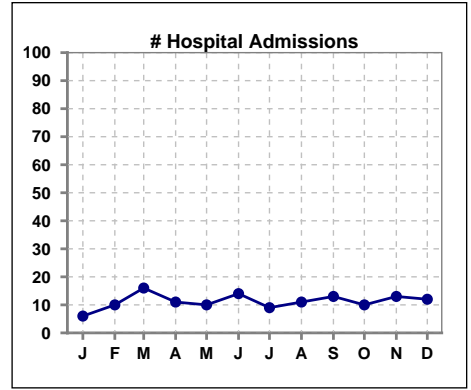
	Jan	Feb	Mar	Apr	May	Jun	Jul	Aug	Sep	Oct	Nov	Dec
# Patient	76	78	77						79	78	73	75
# Influenza	50	49	48						0	18	40	43
% Influenza	66%	63%	62%						0%	23%	55%	57%



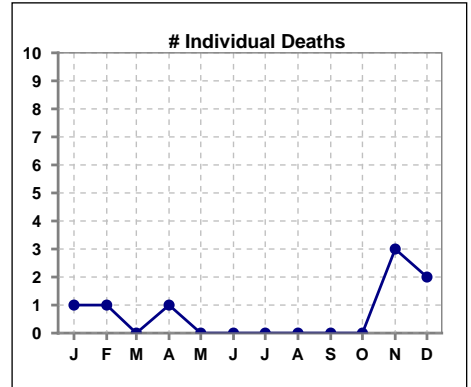
Methodology: a) All labs for 'Adequacy of Dialysis', 'Nutrition', 'Osteodystrophy', 'Anemia' and 'Diabetes' based on last value of month; b) BP's and #L processed are average of all values for month; c) Access data takes last access of month; d) Values for SGA and 'Infection Control' use most recent result.

VIII. Outcome measures

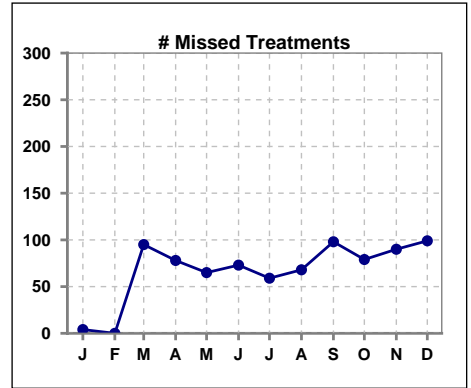
	Jan	Feb	Mar	Apr	May	Jun	Jul	Aug	Sep	Oct	Nov	Dec
# Patient	76	78	77	76	77	77	79	79	79	78	73	75
# Hospital Admissions	6	10	16	11	10	14	9	11	13	10	13	12



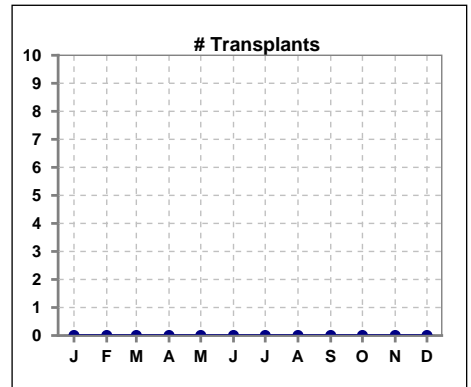
	Jan	Feb	Mar	Apr	May	Jun	Jul	Aug	Sep	Oct	Nov	Dec
# Patient	76	78	77	76	77	77	79	79	79	78	73	75
# Individual Deaths	1	1	0	1	0	0	0	0	0	0	3	2



	Jan	Feb	Mar	Apr	May	Jun	Jul	Aug	Sep	Oct	Nov	Dec
# Patient	76	78	77	76	77	77	79	79	79	78	73	75
# Missed Treatments	4	0	95	78	65	73	59	68	98	79	90	99



	Jan	Feb	Mar	Apr	May	Jun	Jul	Aug	Sep	Oct	Nov	Dec
# Patient	76	78	77	76	77	77	79	79	79	78	73	75
# Transplants	0	0	0	0	0	0	0	0	0	0	0	0



Methodology: a) All labs for 'Adequacy of Dialysis', 'Nutrition', 'Osteodystrophy', 'Anemia' and 'Diabetes' based on last value of month; b) BP's and #L processed are average of all values for month; c) Access data takes last access of month; d) Values for SGA and 'Infection Control' use most recent result.