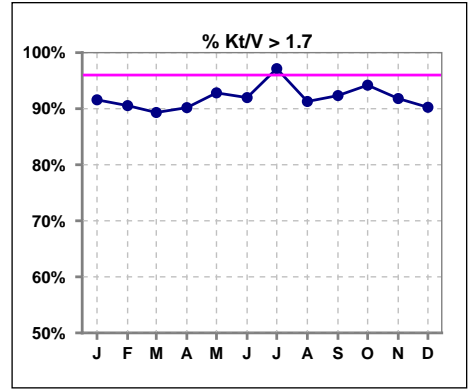
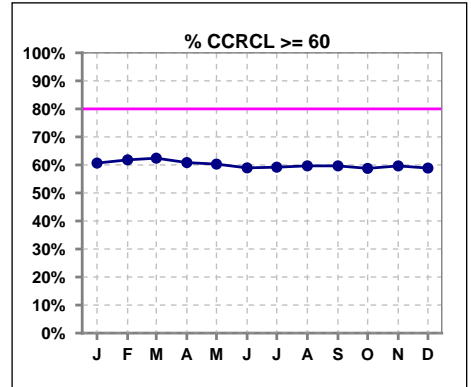


I. ADEQUACY OF DIALYSIS

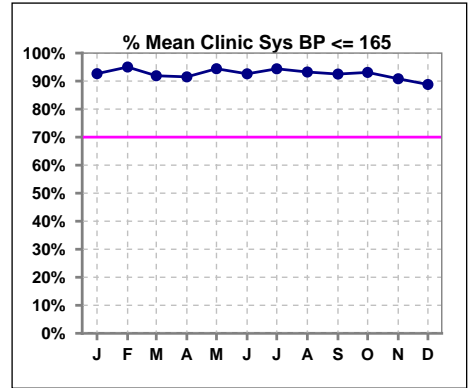
	Jan	Feb	Mar	Apr	May	Jun	Jul	Aug	Sep	Oct	Nov	Dec
# Kt/V - CA/CC PD	202	201	206	214	209	212	210	218	222	224	232	236
# Kt/V >= 1.7	185	182	184	193	194	195	204	199	205	211	213	213
Pop. Mean	2.17	2.14	2.11	2.11	2.13	2.15	2.19	2.14	2.15	2.16	2.14	2.15
Std. Deviation	0.54	0.47	0.47	0.45	0.44	0.41	0.44	0.43	0.45	0.46	0.43	0.47
% Kt/V >= 1.7	92%	91%	89%	90%	93%	92%	97%	91%	92%	94%	92%	90%



	Jan	Feb	Mar	Apr	May	Jun	Jul	Aug	Sep	Oct	Nov	Dec
# CRCL CA/CC PD	150	144	141	143	136	134	125	124	119	114	114	107
# CCRCL >= 60	91	89	88	87	82	79	74	74	71	67	68	63
Pop. Mean	75.50	74.81	75.27	74.37	72.94	72.71	72.85	72.85	72.54	73.28	73.95	73.83
Std. Deviation	31.63	30.50	30.60	30.63	28.03	28.22	28.34	28.41	28.63	31.14	31.26	31.37
% CCRCL >= 60	61%	62%	62%	61%	60%	59%	59%	60%	60%	59%	60%	59%



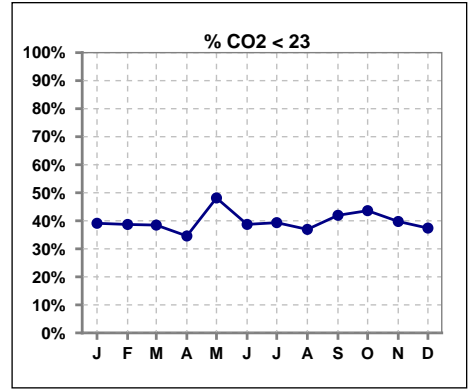
	Jan	Feb	Mar	Apr	May	Jun	Jul	Aug	Sep	Oct	Nov	Dec
# Mean Clinic Sys BP	204	201	210	212	215	216	214	222	227	232	240	241
# Sys BP <= 165	191	191	194	195	206	203	203	207	211	217	220	216
Pop. Mean	139	137	138	137	136	138	135	136	137	136	141	140
Std. Deviation	32.2	20.1	20.3	20.6	19.3	43.0	20.4	19.8	18.8	19.1	29.8	19.1
% Sys BP <=165	93%	95%	92%	92%	94%	93%	94%	93%	93%	93%	91%	89%



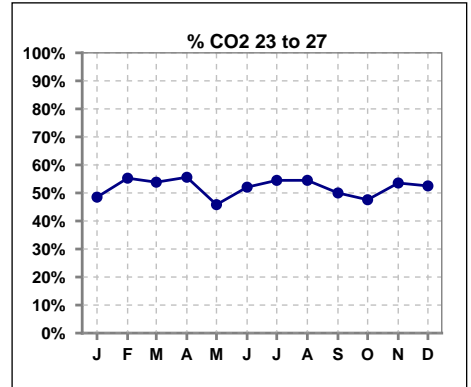
Methodology: a) Kt/V, CRCL and nPNa values are 4 month rolling mean of last value for each month, all other report lab results are based on last value of month; b) BP's are average of all values for month.

I. ADEQUACY OF DIALYSIS - CONT.

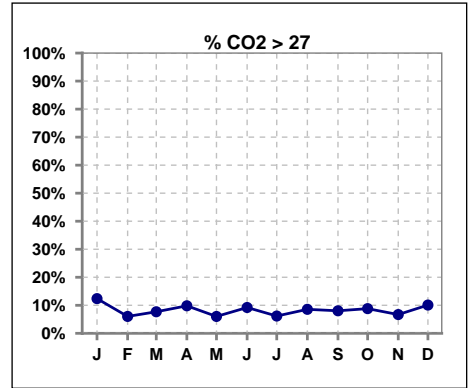
	Jan	Feb	Mar	Apr	May	Jun	Jul	Aug	Sep	Oct	Nov	Dec
# CO2	202	199	208	214	216	217	211	222	224	227	239	238
# CO2 < 23	79	77	80	74	104	84	83	82	94	99	95	89
Pop. Mean	23	23	23	23	23	23	23	23	23	23	23	23
Std. Deviation	3.34	3.05	3.15	3.49	3.34	3.26	6.35	3.08	3.29	3.19	3.49	3.25
% CO2 < 23	39%	39%	38%	35%	48%	39%	39%	37%	42%	44%	40%	37%



	Jan	Feb	Mar	Apr	May	Jun	Jul	Aug	Sep	Oct	Nov	Dec
# CO2	202	199	208	214	216	217	211	222	224	227	239	238
# CO2 23 to 27	98	110	112	119	99	113	115	121	112	108	128	125
Pop. Mean	23	23	23	23	23	23	23	23	23	23	23	23
Std. Deviation	3.34	3.05	3.15	3.49	3.34	3.26	6.35	3.08	3.29	3.19	3.49	3.25
% CO2 23 to 27	49%	55%	54%	56%	46%	52%	55%	55%	50%	48%	54%	53%



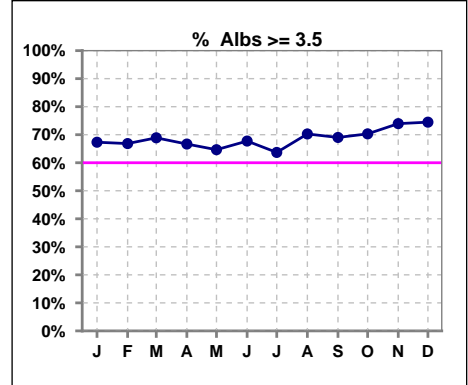
	Jan	Feb	Mar	Apr	May	Jun	Jul	Aug	Sep	Oct	Nov	Dec
# CO2	202	199	208	214	216	217	211	222	224	227	239	238
# CO2 > 27	25	12	16	21	13	20	13	19	18	20	16	24
Pop. Mean	23	23	23	23	23	23	23	23	23	23	23	23
Std. Deviation	3.34	3.05	3.15	3.49	3.34	3.26	6.35	3.08	3.29	3.19	3.49	3.25
% CO2 > 27	12%	6%	8%	10%	6%	9%	6%	9%	8%	9%	7%	10%



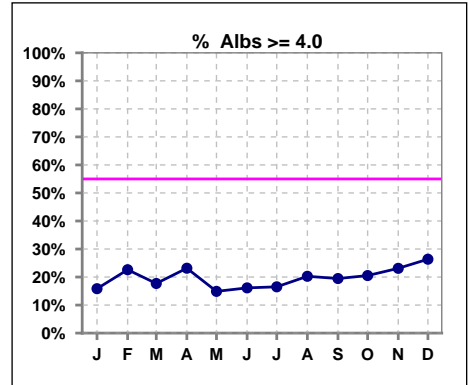
*Albumin values use BCG method - as of July 2001

II. NUTRITION

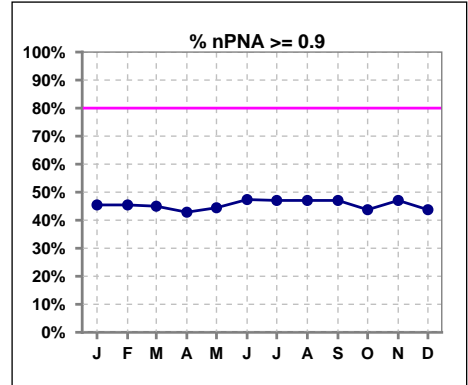
	Jan	Feb	Mar	Apr	May	Jun	Jul	Aug	Sep	Oct	Nov	Dec
# Albumin	202	199	209	216	215	217	212	222	226	229	238	239
# Albumin >= 3.5	136	133	144	144	139	147	135	156	156	161	176	178
Pop. Mean	3.6	3.6	3.6	3.6	3.5	3.6	3.6	3.6	3.6	3.6	3.7	3.7
Std. Deviation	0.39	0.42	0.42	0.46	0.46	0.43	0.40	0.43	0.44	0.38	0.40	0.42
% Alb >= 3.5	67%	67%	69%	67%	65%	68%	64%	70%	69%	70%	74%	74%



	Jan	Feb	Mar	Apr	May	Jun	Jul	Aug	Sep	Oct	Nov	Dec
# Albumin	202	199	209	216	215	217	212	222	226	229	238	239
# Albumin >= 4.0	32	45	37	50	32	35	35	45	44	47	55	63
Pop. Mean	3.6	3.6	3.6	3.6	3.5	3.6	3.6	3.6	3.6	3.6	3.7	3.7
Std. Deviation	0.39	0.42	0.42	0.46	0.46	0.43	0.40	0.43	0.44	0.38	0.40	0.42
% Alb >= 4.0	16%	23%	18%	23%	15%	16%	17%	20%	19%	21%	23%	26%



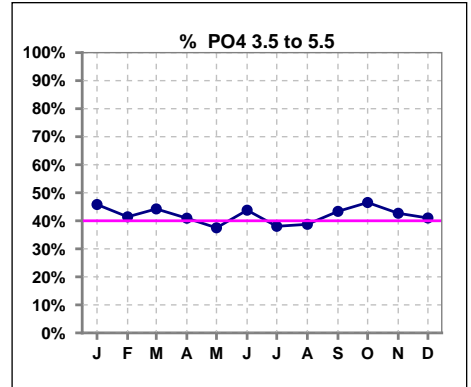
	Jan	Feb	Mar	Apr	May	Jun	Jul	Aug	Sep	Oct	Nov	Dec
# nPNA	22	22	20	21	18	19	17	17	17	16	17	16
# nPNA >= 0.9	10	10	9	9	8	9	8	8	8	7	8	7
Pop. Mean	1.0	1.0	1.0	1.0	1.1	1.0	1.1	1.1	1.1	1.0	1.1	1.0
Std. Deviation	0.36	0.36	0.38	0.37	0.39	0.38	0.40	0.40	0.41	0.40	0.41	0.40
% nPNA >= 0.9	45%	45%	45%	43%	44%	47%	47%	47%	47%	44%	47%	44%



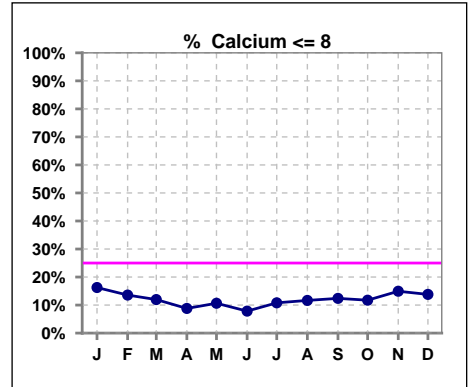
Lab methodology for PTH changed January 2012

III. OSTEODYSTROPHY

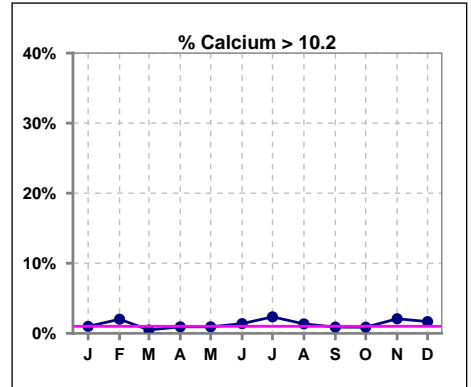
	Jan	Feb	Mar	Apr	May	Jun	Jul	Aug	Sep	Oct	Nov	Dec
# PO4	203	198	208	215	216	217	213	222	226	230	239	239
# PO4 3.5 to 5.5	93	82	92	88	81	95	81	86	98	107	102	98
Pop. Mean	6.0	5.9	6.0	5.9	6.0	5.7	6.0	5.8	5.7	5.7	5.7	5.9
Std. Deviation	1.83	1.73	1.79	1.75	1.91	1.66	1.74	1.71	1.65	1.62	1.61	1.67
% PO4 3.5 to 5.5	46%	41%	44%	41%	38%	44%	38%	39%	43%	47%	43%	41%



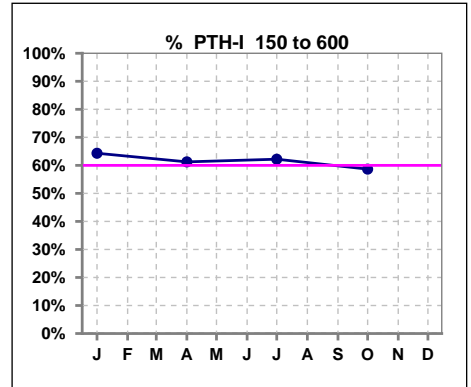
	Jan	Feb	Mar	Apr	May	Jun	Jul	Aug	Sep	Oct	Nov	Dec
# Calcium	203	199	209	216	216	217	213	223	226	230	241	239
# Calcium <= 8	33	27	25	19	23	17	23	26	28	27	36	33
Pop. Mean	8.8	8.8	8.8	8.9	8.8	8.9	9.0	8.9	8.9	8.9	8.9	8.9
Std. Deviation	0.77	0.79	0.76	0.76	0.76	0.73	0.75	0.75	0.75	0.74	0.78	0.78
% Calcium <= 8	16%	14%	12%	9%	11%	8%	11%	12%	12%	12%	15%	14%



	Jan	Feb	Mar	Apr	May	Jun	Jul	Aug	Sep	Oct	Nov	Dec
# Calcium	203	199	209	216	216	217	213	223	226	230	241	239
# Calcium > 10.2	2	4	1	2	2	3	5	3	2	2	5	4
Pop. Mean	8.8	8.8	8.8	8.9	8.8	8.9	9.0	8.9	8.9	8.9	8.9	8.9
Std. Deviation	0.77	0.79	0.76	0.76	0.76	0.73	0.75	0.75	0.75	0.74	0.78	0.78
% Calcium > 10.2	1%	2%	0%	1%	1%	1%	2%	1%	1%	1%	2%	2%



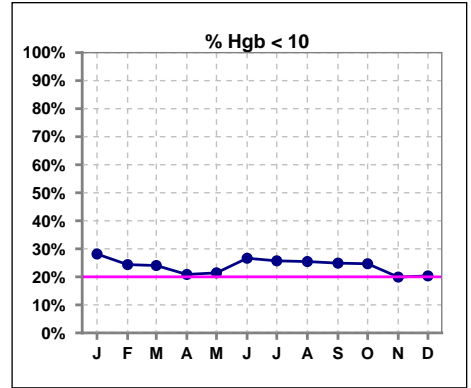
	Jan	Feb	Mar	Apr	May	Jun	Jul	Aug	Sep	Oct	Nov	Dec
# PTH-I	199			209			209			225		
# PTH-I 150 to 600	128			128			130			132		
Pop. Mean	478			445			466			473		
Std. Deviation	291			293			396			354		
% PTH-I 150 to 600	64%			61%			62%			59%		



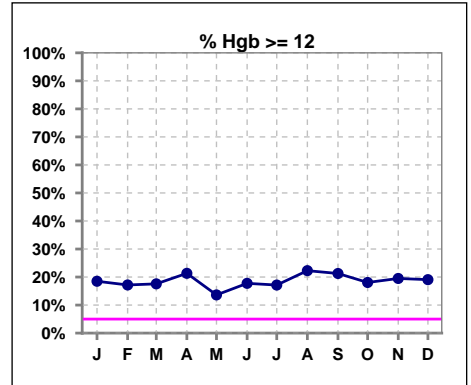
Methodology: a) KtV, CRCL and nPNa values are 4 month rolling mean of last value for each month, all other report lab results are based on last value of month; b) BP's are average of all values for month.

IV. ANEMIA

	Jan	Feb	Mar	Apr	May	Jun	Jul	Aug	Sep	Oct	Nov	Dec
# Hgb	199	197	208	211	210	214	210	220	221	227	236	236
# Hgb < 10	56	48	50	44	45	57	54	56	55	56	47	48
Pop. Mean	10.8	10.6	10.7	10.9	10.8	10.7	10.7	10.9	10.9	10.8	10.9	11.0
Std. Deviation	1.4	1.4	1.5	1.6	1.4	1.3	1.5	1.5	1.6	1.4	1.4	1.3
% Hgb < 10	28%	24%	24%	21%	21%	27%	26%	25%	25%	25%	20%	20%



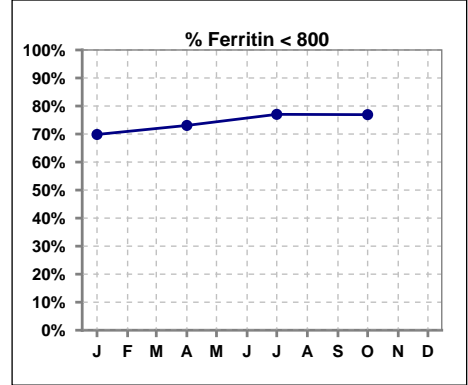
	Jan	Feb	Mar	Apr	May	Jun	Jul	Aug	Sep	Oct	Nov	Dec
# Hgb	200	198	205	211	213	214	210	220	221	227	236	236
# Hgb >= 12	37	34	36	45	29	38	36	49	47	41	46	45
Pop. Mean	10.7	10.6	10.7	10.9	10.8	10.7	10.7	10.9	10.9	10.8	10.9	11.0
Std. Deviation	1.5	1.4	1.5	1.6	1.4	1.3	1.5	1.5	1.6	1.4	1.4	1.3
% Hgb >= 12	19%	17%	18%	21%	14%	18%	17%	22%	21%	18%	19%	19%



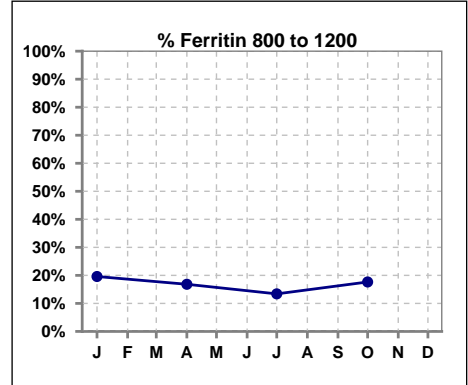
IV. ANEMIA - CONT.

Iron Profile

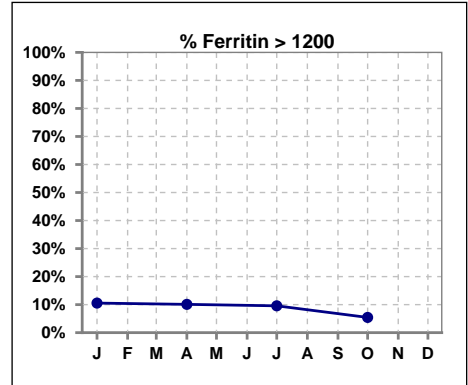
	Jan	Feb	Mar	Apr	May	Jun	Jul	Aug	Sep	Oct	Nov	Dec
# Ferritin	199			208			209			221		
# Ferritin < 800	139			152			161			170		
Pop. Mean	631			614			561			527		
Std. Deviation	549			653			431			434		
% Ferritin < 800	70%			73%			77%			77%		



	Jan	Feb	Mar	Apr	May	Jun	Jul	Aug	Sep	Oct	Nov	Dec
# Ferritin	199			208			209			221		
# Ferritin 800 to 1200	39			35			28			39		
Pop. Mean	631			614			561			527		
Std. Deviation	549			653			431			434		
% Ferritin 800 to 1200	20%			17%			13%			18%		

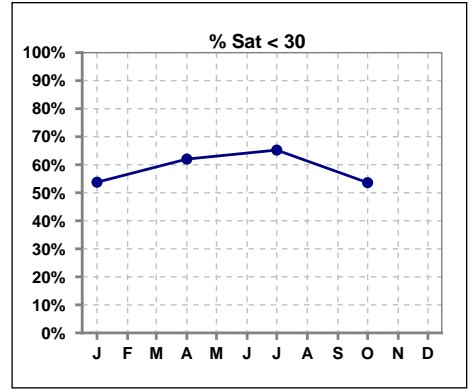


	Jan	Feb	Mar	Apr	May	Jun	Jul	Aug	Sep	Oct	Nov	Dec
# Ferritin	199			208			209			221		
# Ferritin > 1200	21			21			20			12		
Pop. Mean	631			614			561			527		
Std. Deviation	549			653			431			434		
% Ferritin > 1200	11%			10%			10%			5%		

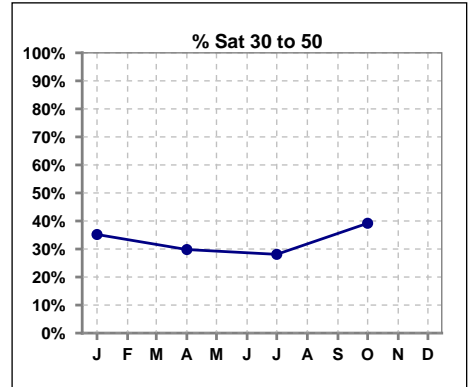


IV. ANEMIA - CONT.

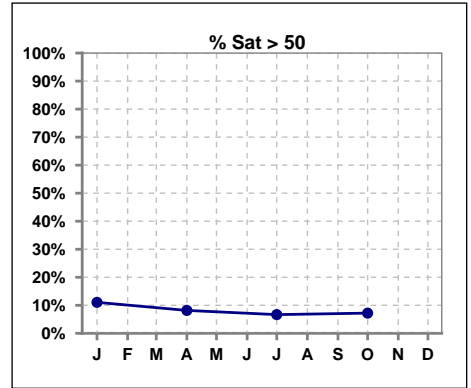
	Jan	Feb	Mar	Apr	May	Jun	Jul	Aug	Sep	Oct	Nov	Dec
# % Sat	199			208			210			222		
# % Sat < 30	107			129			137			119		
Pop. Mean	33			30			29			31		
Std. Deviation	18			17			14			14		
% % Sat < 30	54%			62%			65%			54%		



	Jan	Feb	Mar	Apr	May	Jun	Jul	Aug	Sep	Oct	Nov	Dec
# % Sat	199			208			210			222		
# % Sat 30 to 50	70			62			59			87		
Pop. Mean	33			30			29			31		
Std. Deviation	18			17			14			14		
% Sat% 30 to 50	35%			30%			28%			39%		

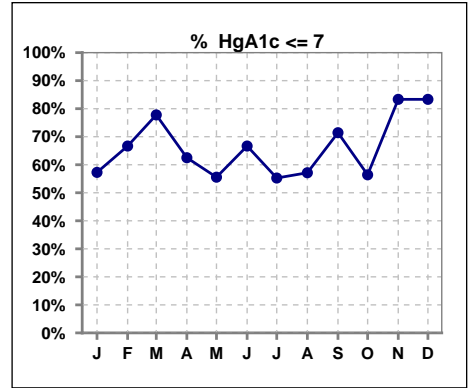


	Jan	Feb	Mar	Apr	May	Jun	Jul	Aug	Sep	Oct	Nov	Dec
# % Sat	199			208			210			222		
# % Sat > 50	22			17			14			16		
Pop. Mean	33			30			29			31		
Std. Deviation	18			17			14			14		
% Sat% > 50	11%			8%			7%			7%		



V. Diabetes

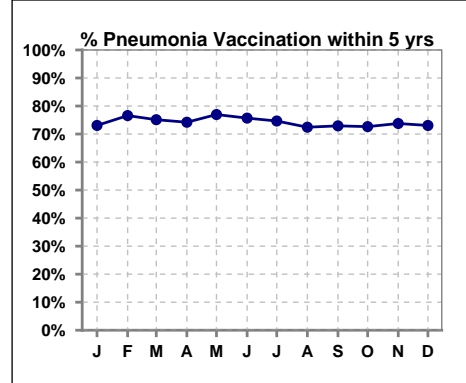
	Jan	Feb	Mar	Apr	May	Jun	Jul	Aug	Sep	Oct	Nov	Dec
# HgA1c	103	9	9	112	9	6	114	7	7	117	6	6
# HgA1c <= 7	59	6	7	70	5	4	63	4	5	66	5	5
Pop. Mean	7.0	6.4	6.3	7.0	7.3	6.7	7.1	6.8	6.4	7.1	6.3	6.6
Std. Deviation	1.55	1.04	1.03	1.54	1.59	1.65	1.54	1.85	0.93	1.44	0.77	1.10
% HgA1c <= 7	57%	67%	78%	63%	56%	67%	55%	57%	71%	56%	83%	83%



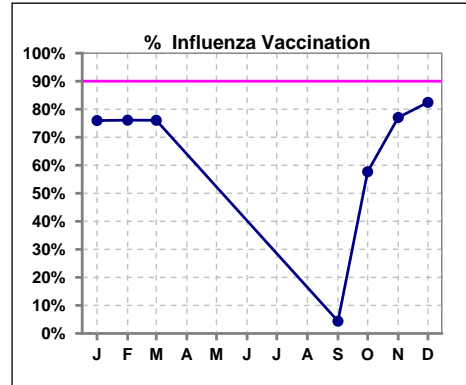
VI. Infection Control

Pneumonia vaccination within the past five years

	Jan	Feb	Mar	Apr	May	Jun	Jul	Aug	Sep	Oct	Nov	Dec
# Patient	208	205	213	221	217	218	217	225	229	234	244	245
# Pneumonia	152	157	160	164	167	165	162	163	167	170	180	179
% Pneumonia	73%	77%	75%	74%	77%	76%	75%	72%	73%	73%	74%	73%



	Jan	Feb	Mar	Apr	May	Jun	Jul	Aug	Sep	Oct	Nov	Dec
# Patient	208	205	213						229	234	244	245
# Influenza	158	156	162						10	135	188	202
% Influenza	76%	76%	76%						4%	58%	77%	82%



Exit Site Infection Rate

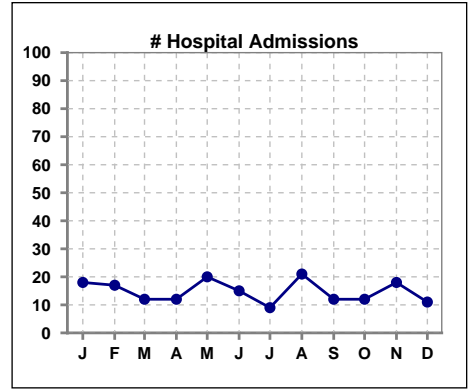
	Jan	Feb	Mar	Apr	May	Jun	Jul	Aug	Sep	Oct	Nov	Dec
Current Month	202.99	0	0	0	0	67.86	102.12	215.29	211.74	0	224.72	0
Rolling Year-to-date	0.14	0.13	0.12	0.11	0.10	0.11	0.10	0.08	0.09	0.06	0.06	0.05

Peritonitis Infection Rate

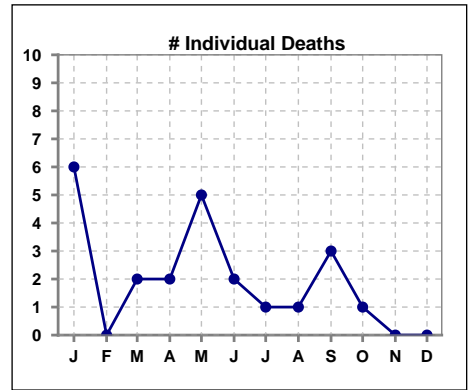
	Jan	Feb	Mar	Apr	May	Jun	Jul	Aug	Sep	Oct	Nov	Dec
Current Month	67.66	62.06	103.48	102.50	104.31	22.62	34.04	30.76	52.93	223.57	44.94	57.93
Rolling Year-to-date	0.31	0.29	0.27	0.21	0.22	0.26	0.26	0.27	0.26	0.22	0.23	0.22

VIII. Outcome measures

	Jan	Feb	Mar	Apr	May	Jun	Jul	Aug	Sep	Oct	Nov	Dec
# Patient	208	205	213	221	217	218	217	225	229	234	244	245
# Hospital Admissions	18	17	12	12	20	15	9	21	12	12	18	11



	Jan	Feb	Mar	Apr	May	Jun	Jul	Aug	Sep	Oct	Nov	Dec
# Patient	208	205	213	221	217	218	217	225	229	234	244	245
# Individual Deaths	6	0	2	2	5	2	1	1	3	1	0	0



	Jan	Feb	Mar	Apr	May	Jun	Jul	Aug	Sep	Oct	Nov	Dec
# Patient	208	205	213	221	217	218	217	225	229	234	244	245
# Transplants	1	1	1	0	3	0	1	2	1	1	0	5

