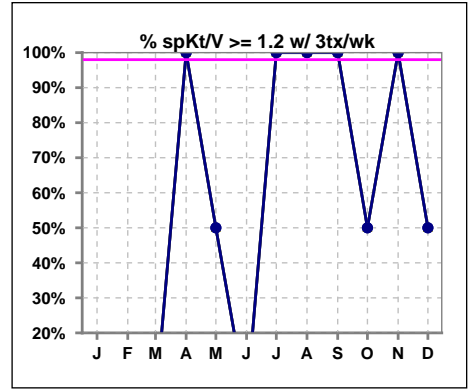
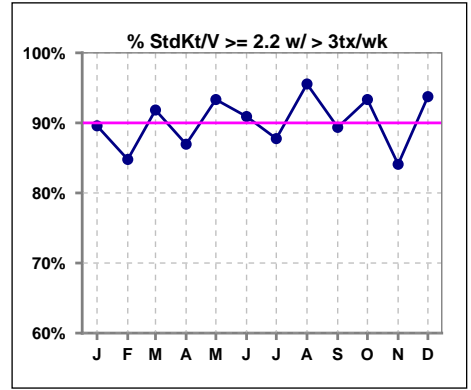


**I. ADEQUACY OF DIALYSIS**

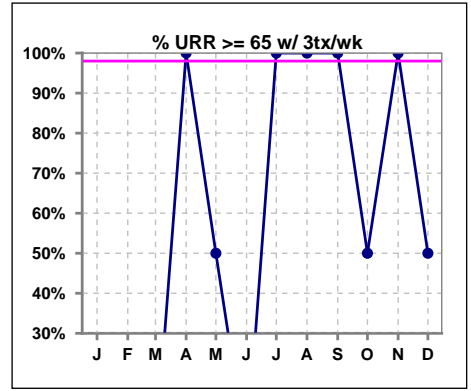
	Jan	Feb	Mar	Apr	May	Jun	Jul	Aug	Sep	Oct	Nov	Dec
# spKt/V w/3tx/wk	0	0	1	2	2	0	1	1	2	2	2	2
# spKt/V>=1.2 w/3tx/wk	0	0	0	2	1	0	1	1	2	1	2	1
Pop. Mean	0	0	0.82	1.44	0.97	0	1.46	1.39	2.29	1.03	1.60	1.28
Std. Deviation	0	0	0	0.15	0.37	0	0	0	0.15	0.28	0.49	0.15
% >=1.2 w/3tx/wk	0%	0%	0%	100%	50%	0%	100%	100%	100%	50%	100%	50%



	Jan	Feb	Mar	Apr	May	Jun	Jul	Aug	Sep	Oct	Nov	Dec
# StdKt/V w/>3tx/wk	48	46	49	46	45	44	49	45	47	45	44	32
# >= 2.2 w/>3tx/wk	43	39	45	40	42	40	43	43	42	42	37	30
Pop. Mean	2.46	2.46	2.46	2.48	2.57	2.57	2.51	2.56	2.55	2.58	2.52	2.55
Std. Deviation	0.30	0.22	0.22	0.27	0.31	0.43	0.28	0.29	0.39	0.34	0.38	0.48
% >= 2.2 w/>3tx/wk	90%	85%	92%	87%	93%	91%	88%	96%	89%	93%	84%	94%



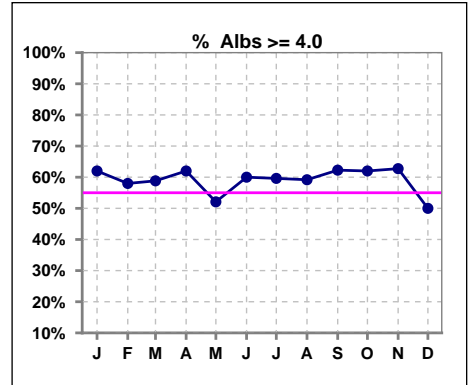
	Jan	Feb	Mar	Apr	May	Jun	Jul	Aug	Sep	Oct	Nov	Dec
# URR w/ 3tx/wk	0	0	1	2	2	0	1	1	2	2	2	2
# URR>=65 w/ 3tx/wk	0	0	0	2	1	0	1	1	2	1	2	1
Pop. Mean	0	0	51	74	57	0	73	70	87	60	74	67
Std. Deviation	0	0	0	8.67	12.96	0	0	0	1.83	8.67	10.03	6.56
% URR>=65 w/ 3tx/wk	0%	0%	0%	100%	50%	0%	100%	100%	100%	50%	100%	50%



\*Albumin values use BCG method - as of July 2001

**II. NUTRITION**

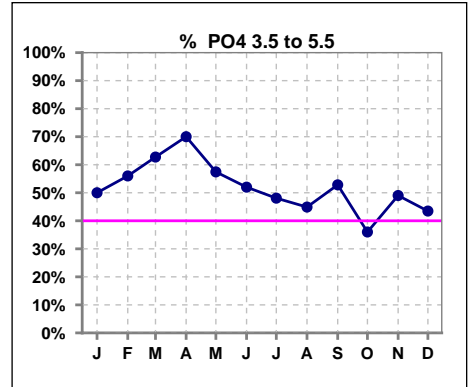
	Jan	Feb	Mar	Apr	May	Jun	Jul	Aug	Sep	Oct	Nov	Dec
# Albumin	50	50	51	50	48	50	52	49	53	50	51	46
# Albumin >= 4.0	31	29	30	31	25	30	31	29	33	31	32	23
Pop. Mean	4.0	4.0	4.0	4.0	4.0	4.0	4.0	4.0	4.0	4.0	4.0	4.0
Std. Deviation	0.35	0.35	0.28	0.34	0.35	0.33	0.41	0.39	0.42	0.44	0.34	0.37
% Alb >= 4.0	62%	58%	59%	62%	52%	60%	60%	59%	62%	62%	63%	50%



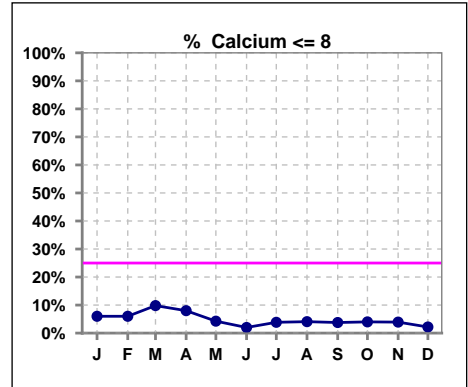
Lab methodology for PTH changed January 2012

**III. OSTEODYSTROPHY**

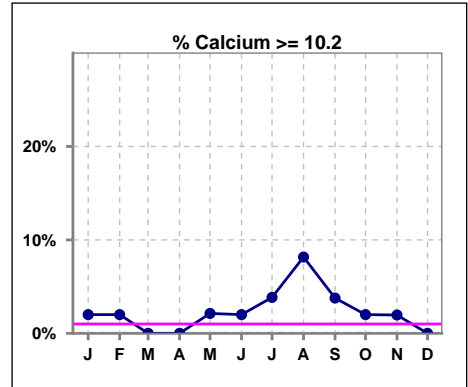
	Jan	Feb	Mar	Apr	May	Jun	Jul	Aug	Sep	Oct	Nov	Dec
# PO4	50	50	51	50	47	50	52	49	53	50	51	46
# PO4 3.5 to 5.5	25	28	32	35	27	26	25	22	28	18	25	20
Pop. Mean	5.5	5.2	5.1	5.2	5.1	5.4	5.5	5.4	5.8	5.9	5.8	5.5
Std. Deviation	2.00	1.54	1.67	1.56	1.31	1.57	1.27	1.50	1.57	1.80	2.15	1.89
% PO4 3.5 to 5.5	50%	56%	63%	70%	57%	52%	48%	45%	53%	36%	49%	43%



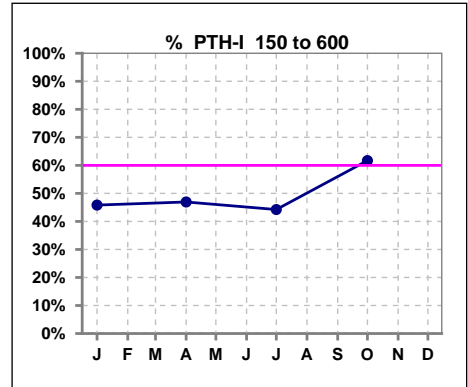
	Jan	Feb	Mar	Apr	May	Jun	Jul	Aug	Sep	Oct	Nov	Dec
# Calcium	50	50	51	50	47	50	52	49	53	50	51	46
# Calcium <= 8	3	3	5	4	2	1	2	2	2	2	2	1
Pop. Mean	9.0	9.1	9.0	9.0	9.2	9.3	9.3	9.3	9.3	9.1	9.3	9.2
Std. Deviation	0.66	0.69	0.68	0.59	0.64	0.61	0.62	0.69	0.66	0.66	0.54	0.58
% Calcium <= 8	6%	6%	10%	8%	4%	2%	4%	4%	4%	4%	4%	2%



	Jan	Feb	Mar	Apr	May	Jun	Jul	Aug	Sep	Oct	Nov	Dec
# Calcium	50	50	51	50	47	50	52	49	53	50	51	46
# Calcium >= 10.2	1	1	0	0	1	1	2	4	2	1	1	0
Pop. Mean	9.0	9.1	9.0	9.0	9.2	9.3	9.3	9.3	9.3	9.1	9.3	9.2
Std. Deviation	0.66	0.69	0.68	0.59	0.64	0.61	0.62	0.69	0.66	0.66	0.54	0.58
% Calcium >= 10.2	2%	2%	0%	0%	2%	2%	4%	8%	4%	2%	2%	0%



	Jan	Feb	Mar	Apr	May	Jun	Jul	Aug	Sep	Oct	Nov	Dec
# PTH-I	48			49			52			47		
# PTH-I 150 to 600	22			23			23			29		
Pop. Mean	644			672			606			676		
Std. Deviation	517			560			549			776		
% PTH-I 150 to 600	46%			47%			44%			62%		

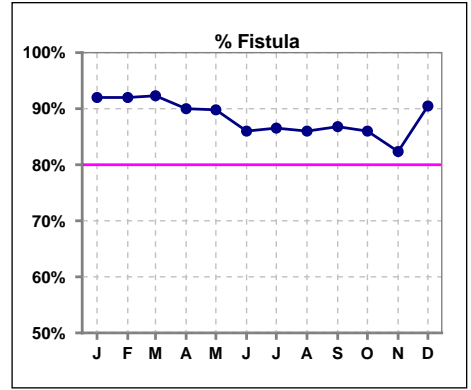


Methodology: a) All labs for 'Adequacy of Dialysis', 'Nutrition', 'Osteodystrophy' and 'Anemia' based on last value of month; b) Access data takes last access of month; c) Values for 'Infection Control' uses most recent result.

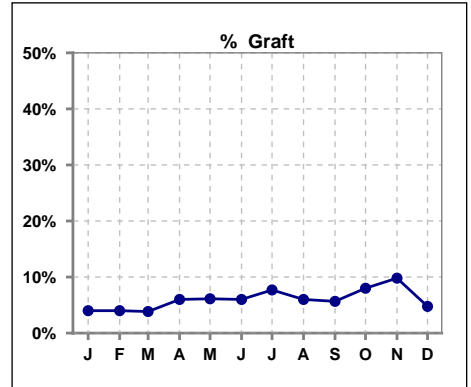
**Northwest Kidney Centers - Home Hemodialysis**  
**Quality Assurance Reports**  
 Through period ending Dec. 31, 2018

**IV. ACCESS**

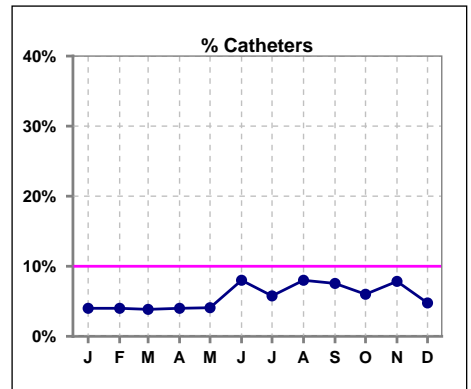
	Jan	Feb	Mar	Apr	May	Jun	Jul	Aug	Sep	Oct	Nov	Dec
<b># Access</b>	48	48	51	41	49	50	52	27	29	25	26	23
<b># Fistula</b>	46	46	48	45	44	43	45	43	46	43	42	38
<b>% Fistula</b>	92%	92%	92%	90%	90%	86%	87%	86%	87%	86%	82%	90%



	Jan	Feb	Mar	Apr	May	Jun	Jul	Aug	Sep	Oct	Nov	Dec
<b># Access</b>	48	48	51	41	49	50	52	27	29	25	26	23
<b># Graft</b>	2	2	2	3	3	3	4	3	3	4	5	2
<b>% Graft</b>	4%	4%	4%	6%	6%	6%	8%	6%	6%	8%	10%	5%



	Jan	Feb	Mar	Apr	May	Jun	Jul	Aug	Sep	Oct	Nov	Dec
<b># Access</b>	48	48	51	41	49	50	52	27	29	25	26	23
<b># Catheters</b>	2	2	2	2	2	4	3	4	4	3	4	2
<b>% Catheters</b>	4%	4%	4%	4%	4%	8%	6%	8%	8%	6%	8%	5%



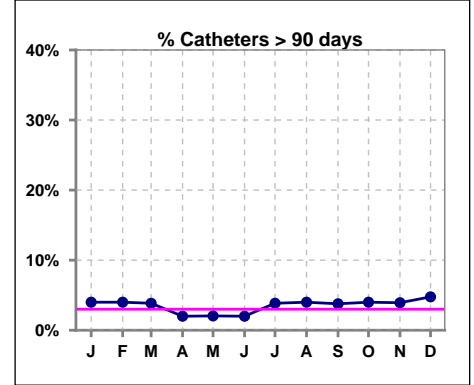
Methodology: a) All labs for 'Adequacy of Dialysis', 'Nutrition', 'Osteodystrophy' and 'Anemia' based on last value of month; b) Access data takes last access of month; c) Values for 'Infection Control' uses most recent result.

**IV. ACCESS - CONT.**

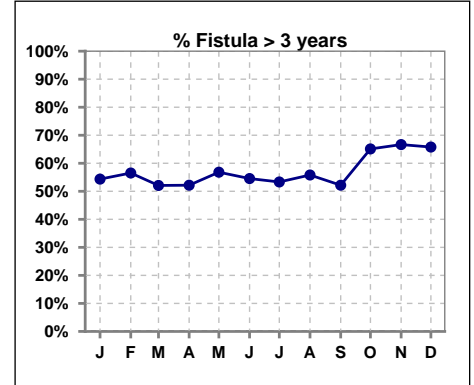
**Catheters > 90 days**

	Jan	Feb	Mar	Apr	May	Jun	Jul	Aug	Sep	Oct	Nov	Dec
<b># Access</b>	50	50	52	50	49	50	52	50	53	50	51	42
<b># Catheters</b>	2	2	2	1	1	1	2	2	2	2	2	2
<b>% Catheters</b>	4%	4%	4%	2%	2%	2%	4%	4%	4%	4%	4%	5%

**Definition:** Catheter in use on last treatment of the month



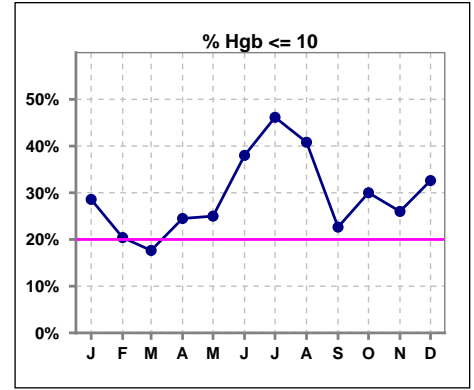
	Jan	Feb	Mar	Apr	May	Jun	Jul	Aug	Sep	Oct	Nov	Dec
<b># Fistula</b>	46	46	48	46	44	44	45	43	46	43	42	38
<b># Fistula &gt; 3 yrs</b>	25	26	25	24	25	24	24	24	24	28	28	25
<b>% Fistula &gt; 3 yrs</b>	54%	57%	52%	52%	57%	55%	53%	56%	52%	65%	67%	66%



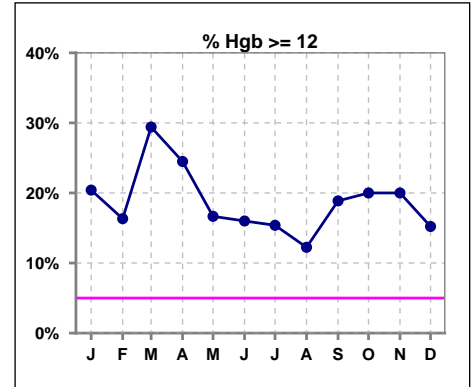
**Northwest Kidney Centers - Home Hemodialysis**  
**Quality Assurance Reports**  
 Through period ending Dec. 31, 2018

**V. ANEMIA**

	Jan	Feb	Mar	Apr	May	Jun	Jul	Aug	Sep	Oct	Nov	Dec
# Hgb	49	49	51	49	48	50	52	49	53	50	50	46
# Hgb <= 10	14	10	9	12	12	19	24	20	12	15	13	15
Pop. Mean	10.8	11.0	11.1	11.0	10.8	10.5	10.4	10.6	11.0	11.0	10.7	10.6
Std. Deviation	1.4	1.2	1.3	1.5	1.4	1.6	1.5	1.3	1.3	1.3	1.5	1.7
<b>% Hgb &lt;= 10</b>	<b>29%</b>	<b>20%</b>	<b>18%</b>	<b>24%</b>	<b>25%</b>	<b>38%</b>	<b>46%</b>	<b>41%</b>	<b>23%</b>	<b>30%</b>	<b>26%</b>	<b>33%</b>



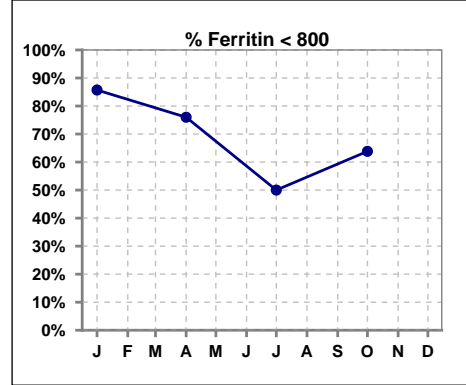
	Jan	Feb	Mar	Apr	May	Jun	Jul	Aug	Sep	Oct	Nov	Dec
# Hgb	49	49	51	49	48	50	52	49	53	50	50	46
# Hgb >= 12	10	8	15	12	8	8	8	6	10	10	10	7
Pop. Mean	10.8	11.0	11.1	11.0	10.8	10.5	10.4	10.6	11.0	11.0	10.7	10.6
Std. Deviation	1.4	1.2	1.3	1.5	1.4	1.6	1.5	1.3	1.3	1.3	1.5	1.7
<b>% Hgb &gt;= 12</b>	<b>20%</b>	<b>16%</b>	<b>29%</b>	<b>24%</b>	<b>17%</b>	<b>16%</b>	<b>15%</b>	<b>12%</b>	<b>19%</b>	<b>20%</b>	<b>20%</b>	<b>15%</b>



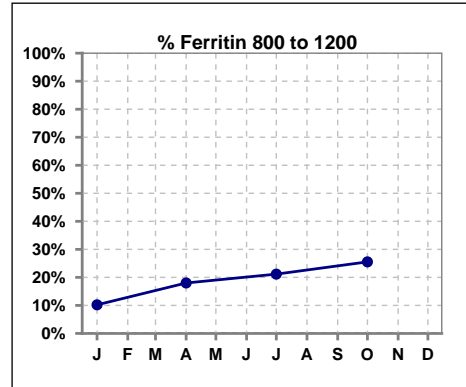
**V. ANEMIA - CONT.**

**Iron Profile**

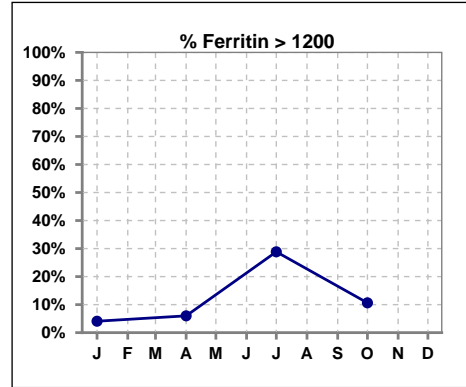
	Jan	Feb	Mar	Apr	May	Jun	Jul	Aug	Sep	Oct	Nov	Dec
# Ferritin	49			50			52			47		
# Ferritin < 800	42			38			26			30		
Pop. Mean	512			566			812			640		
Std. Deviation	295			365			493			400		
<b>% Ferritin &lt; 800</b>	<b>86%</b>			<b>76%</b>			<b>50%</b>			<b>64%</b>		



	Jan	Feb	Mar	Apr	May	Jun	Jul	Aug	Sep	Oct	Nov	Dec
# Ferritin	49			50			52			47		
# Ferritin 800 to 1200	5			9			11			12		
Pop. Mean	512			566			812			640		
Std. Deviation	295			365			493			400		
<b>% Ferritin 800 to 1200</b>	<b>10%</b>			<b>18%</b>			<b>21%</b>			<b>26%</b>		

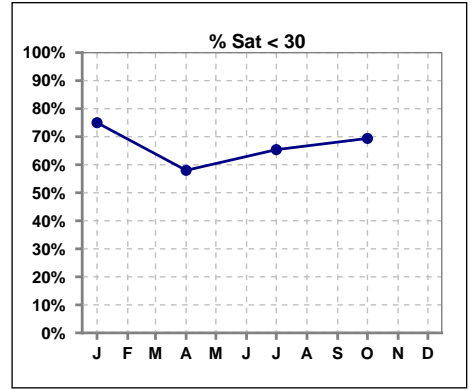


	Jan	Feb	Mar	Apr	May	Jun	Jul	Aug	Sep	Oct	Nov	Dec
# Ferritin	49			50			52			47		
# Ferritin > 1200	2			3			15			5		
Pop. Mean	512			566			812			640		
Std. Deviation	295			365			493			400		
<b>% Ferritin &gt; 1200</b>	<b>4%</b>			<b>6%</b>			<b>29%</b>			<b>11%</b>		

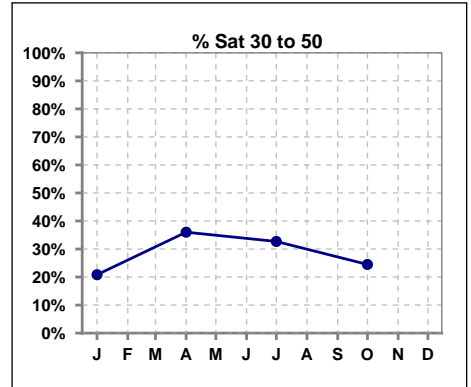


**V. ANEMIA - CONT.**

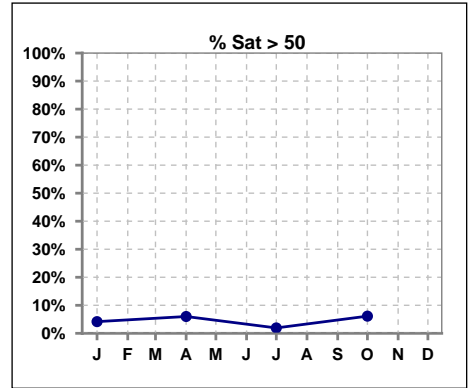
	Jan	Feb	Mar	Apr	May	Jun	Jul	Aug	Sep	Oct	Nov	Dec
# % Sat	48			50			52			49		
# % Sat < 30	36			29			34			34		
Pop. Mean	25			31			27			28		
Std. Deviation	14			22			11			17		
<b>% % Sat &lt; 30</b>	<b>75%</b>			<b>58%</b>			<b>65%</b>			<b>69%</b>		



	Jan	Feb	Mar	Apr	May	Jun	Jul	Aug	Sep	Oct	Nov	Dec
# % Sat	48			50			52			49		
# % Sat 30 to 50	10			18			17			12		
Pop. Mean	25			31			27			28		
Std. Deviation	14			22			11			17		
<b>% % Sat 30 to 50</b>	<b>21%</b>			<b>36%</b>			<b>33%</b>			<b>24%</b>		



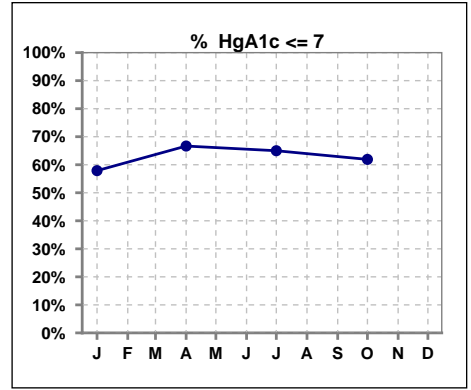
	Jan	Feb	Mar	Apr	May	Jun	Jul	Aug	Sep	Oct	Nov	Dec
# % Sat	48			50			52			49		
# % Sat > 50	2			3			1			3		
Pop. Mean	25			31			27			28		
Std. Deviation	14			22			11			17		
<b>% % Sat &gt; 50</b>	<b>4%</b>			<b>6%</b>			<b>2%</b>			<b>6%</b>		





**VI. Diabetes**

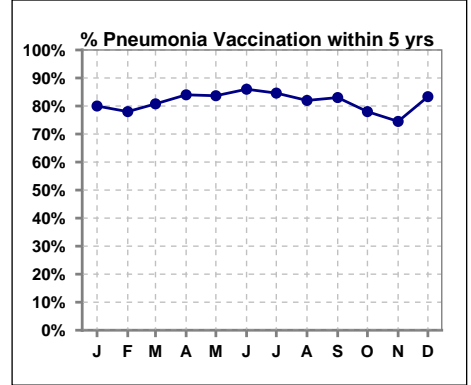
	Jan	Feb	Mar	Apr	May	Jun	Jul	Aug	Sep	Oct	Nov	Dec
# HgA1c	19			21			20			21		
# HgA1c <= 7	11			14			13			13		
Pop. Mean	7.0			6.7			6.8			6.7		
Std. Deviation	0.94			1.17			1.28			1.44		
<b>% HgA1c &lt;= 7</b>	<b>58%</b>			<b>67%</b>			<b>65%</b>			<b>62%</b>		



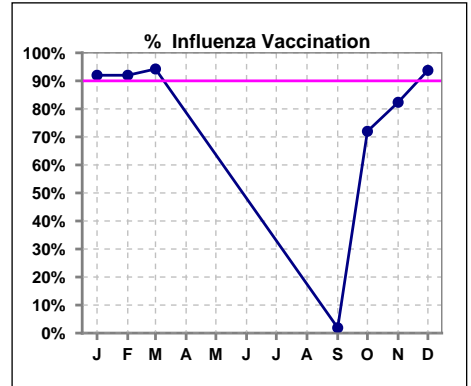
**VII. Infection Control**

**Pneumonia vaccination within the past five years**

	Jan	Feb	Mar	Apr	May	Jun	Jul	Aug	Sep	Oct	Nov	Dec
<b># Patient</b>	50	50	52	50	49	50	52	50	53	50	51	48
<b># Pneumonia</b>	40	39	42	42	41	43	44	41	44	39	38	40
<b>% Pneumonia</b>	80%	78%	81%	84%	84%	86%	85%	82%	83%	78%	75%	83%



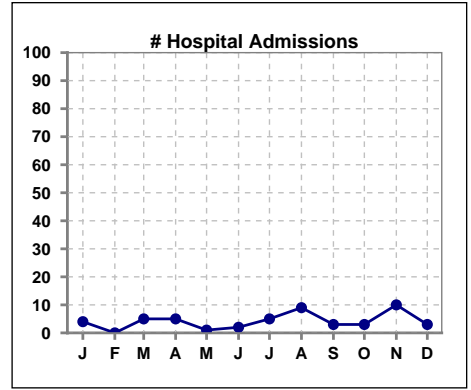
	Jan	Feb	Mar	Apr	May	Jun	Jul	Aug	Sep	Oct	Nov	Dec
<b># Patient</b>	50	50	52						53	50	51	48
<b># Influenza</b>	46	46	49						1	36	42	45
<b>% Influenza</b>	92%	92%	94%						2%	72%	82%	94%



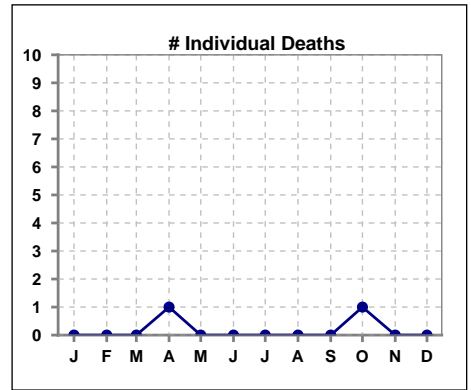
Methodology: a) All labs for 'Adequacy of Dialysis', 'Nutrition', 'Osteodystrophy' and 'Anemia' based on last value of month; b) Access data takes last access of month; c) Values for 'Infection Control' uses most recent result.

**VIII. Outcome measures**

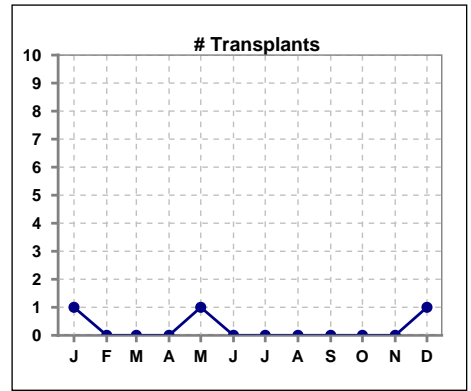
	Jan	Feb	Mar	Apr	May	Jun	Jul	Aug	Sep	Oct	Nov	Dec
<b># Patient</b>	50	50	52	50	49	50	52	50	53	50	51	48
<b># Hospital Admissions</b>	4	0	5	5	1	2	5	9	3	3	10	3



	Jan	Feb	Mar	Apr	May	Jun	Jul	Aug	Sep	Oct	Nov	Dec
<b># Patient</b>	50	50	52	50	49	50	52	50	53	50	51	48
<b># Individual Deaths</b>	0	0	0	1	0	0	0	0	0	1	0	0



	Jan	Feb	Mar	Apr	May	Jun	Jul	Aug	Sep	Oct	Nov	Dec
<b># Patient</b>	50	50	52	50	49	50	52	50	53	50	51	48
<b># Transplants</b>	1	0	0	0	1	0	0	0	0	0	0	1



Methodology: a) All labs for 'Adequacy of Dialysis', 'Nutrition', 'Osteodystrophy' and 'Anemia' based on last value of month; b) Access data takes last access of month; c) Values for 'Infection Control' uses most recent result.