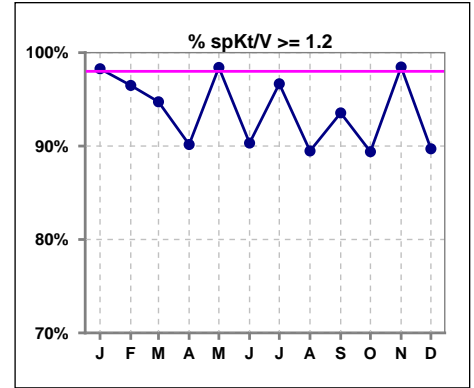
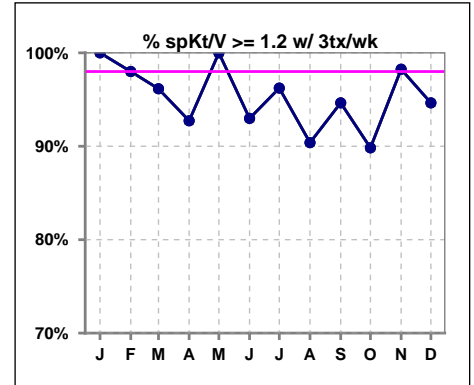


I. ADEQUACY OF DIALYSIS

	Jan	Feb	Mar	Apr	May	Jun	Jul	Aug	Sep	Oct	Nov	Dec
# spKt/V	58	57	57	61	63	62	60	57	62	66	65	68
# spKt/V >= 1.2	57	55	54	55	62	56	58	51	58	59	64	61
Pop. Mean	1.58	1.62	1.62	1.62	1.66	1.63	1.65	1.60	1.60	1.51	1.56	1.52
Std. Deviation	0.29	0.29	0.34	0.35	0.32	0.36	0.36	0.29	0.48	0.33	0.29	0.36
% spKt/V >= 1.2	98%	96%	95%	90%	98%	90%	97%	89%	94%	89%	98%	90%



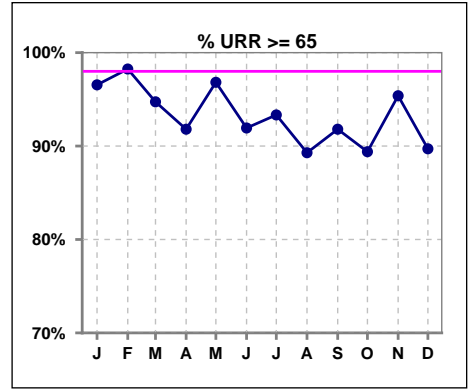
	Jan	Feb	Mar	Apr	May	Jun	Jul	Aug	Sep	Oct	Nov	Dec
# spKt/V w/ 3tx/wk	51	50	52	55	57	57	53	52	56	59	57	56
# spKt/V >= 1.2 w/3tx/wk	51	49	50	51	57	53	51	47	53	53	56	53
Pop. Mean	1.62	1.64	1.64	1.66	1.68	1.65	1.67	1.61	1.62	1.53	1.57	1.59
Std. Deviation	0.29	0.29	0.34	0.33	0.30	0.34	0.36	0.29	0.49	0.32	0.28	0.32
% >= 1.2 w/3tx/wk	100%	98%	96%	93%	100%	93%	96%	90%	95%	90%	98%	95%



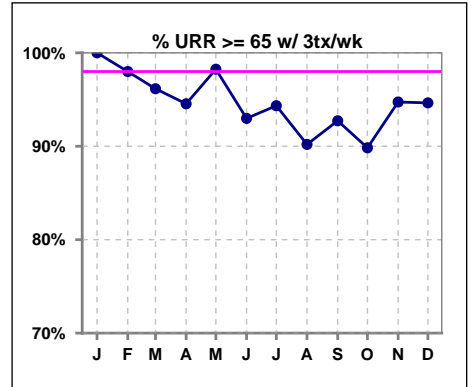
Methodology: a) All labs for 'Adequacy of Dialysis', 'Nutrition', 'Osteodystrophy', 'Anemia' and 'Diabetes' based on last value of month; b) BP's and #L processed are average of all values for month; c) Access data takes last access of month; d) Values for SGA and 'Infection Control' use most recent result.

I. ADEQUACY OF DIALYSIS - CONT.

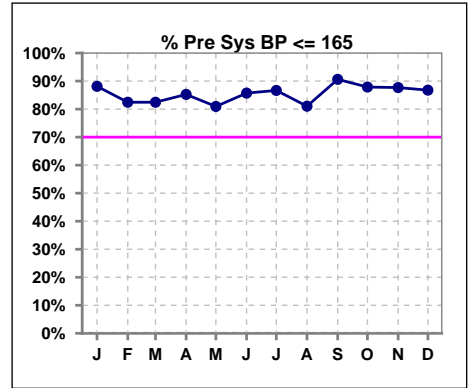
	Jan	Feb	Mar	Apr	May	Jun	Jul	Aug	Sep	Oct	Nov	Dec
# URR	58	57	57	61	63	62	60	56	61	66	65	68
# URR >= 65	56	56	54	56	61	57	56	50	56	59	62	61
Pop. Mean	74	75	75	75	75	75	75	74	73	72	73	72
Std. Deviation	5.78	6.22	7.13	7.23	6.31	7.25	7.12	6.67	8.37	8.10	6.78	10.80
% URR >= 65	97%	98%	95%	92%	97%	92%	93%	89%	92%	89%	95%	90%



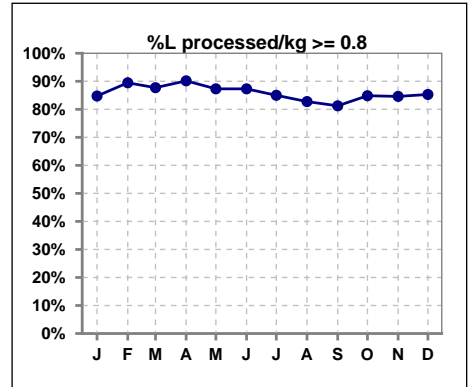
	Jan	Feb	Mar	Apr	May	Jun	Jul	Aug	Sep	Oct	Nov	Dec
# URR w/ 3tx/wk	51	50	52	55	57	57	53	51	55	59	57	56
# URR>=65 w/ 3tx/wk	51	49	50	52	56	53	50	46	51	53	54	53
Pop. Mean	75	75	75	75	76	75	76	75	74	73	74	74
Std. Deviation	5.41	6.20	6.87	6.49	5.79	6.95	6.93	6.57	8.42	8.16	6.78	9.99
% URR>=65 w/ 3tx/wk	100%	98%	96%	95%	98%	93%	94%	90%	93%	90%	95%	95%



	Jan	Feb	Mar	Apr	May	Jun	Jul	Aug	Sep	Oct	Nov	Dec
# Pre Sys BP	59	57	57	61	63	63	60	58	64	66	65	68
# Pre Sys BP <= 165	52	48	47	52	51	55	52	49	58	59	57	60
Pop. Mean	141	143	141	142	144	141	142	145	142	142	144	145
Std. Deviation	20.8	20.0	20.1	19.8	18.6	18.5	19.0	17.8	18.3	18.9	18.1	16.3
% Pre Sys BP <=165	88%	82%	82%	85%	81%	86%	87%	81%	91%	88%	88%	87%



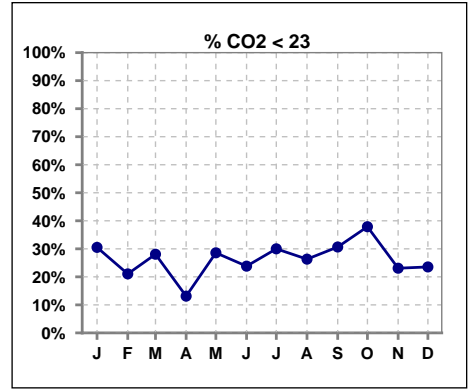
	Jan	Feb	Mar	Apr	May	Jun	Jul	Aug	Sep	Oct	Nov	Dec
# L processed/kg	59	57	57	61	63	63	60	58	64	66	65	68
# L processed/kg>=0.8	50	51	50	55	55	55	51	48	52	56	55	58
Pop. Mean	1	1	1	1	1	1	1	1	1	1	1	1
Std. Deviation	0.3	0.3	0.3	0.3	0.3	0.3	0.3	0.3	0.3	0.3	0.3	0.3
% L processed/kg>=0.8	85%	89%	88%	90%	87%	87%	85%	83%	81%	85%	85%	85%



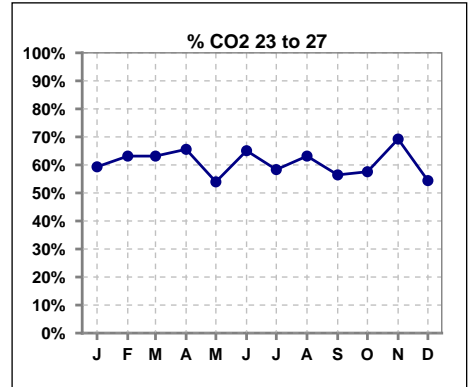
Methodology: a) All labs for 'Adequacy of Dialysis', 'Nutrition', 'Osteodystrophy', 'Anemia' and 'Diabetes' based on last value of month; b) BP's and #L processed are average of all values for month; c) Access data takes last access of month; d) Values for SGA and 'Infection Control' use most recent result.

I. ADEQUACY OF DIALYSIS - CONT.

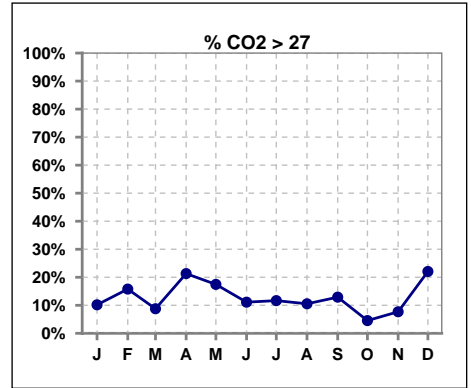
	Jan	Feb	Mar	Apr	May	Jun	Jul	Aug	Sep	Oct	Nov	Dec
# CO2	59	57	57	61	63	63	60	57	62	66	65	68
# CO2 < 23	18	12	16	8	18	15	18	15	19	25	15	16
Pop. Mean	24	25	24	25	24	24	24	24	24	23	24	25
Std. Deviation	3.23	2.86	3.03	2.60	3.02	2.75	2.82	3.44	3.09	2.94	2.62	3.24
% CO2 < 23	31%	21%	28%	13%	29%	24%	30%	26%	31%	38%	23%	24%



	Jan	Feb	Mar	Apr	May	Jun	Jul	Aug	Sep	Oct	Nov	Dec
# CO2	59	57	57	61	63	63	60	57	62	66	65	68
# CO2 23 to 27	35	36	36	40	34	41	35	36	35	38	45	37
Pop. Mean	24	25	24	25	24	24	24	24	24	23	24	25
Std. Deviation	3.23	2.86	3.03	2.60	3.02	2.75	2.82	3.44	3.09	2.94	2.62	3.24
% CO2 23 to 27	59%	63%	63%	66%	54%	65%	58%	63%	56%	58%	69%	54%



	Jan	Feb	Mar	Apr	May	Jun	Jul	Aug	Sep	Oct	Nov	Dec
# CO2	59	57	57	61	63	63	60	57	62	66	65	68
# CO2 > 27	6	9	5	13	11	7	7	6	8	3	5	15
Pop. Mean	24	25	24	25	24	24	24	24	24	23	24	25
Std. Deviation	3.23	2.86	3.03	2.60	3.02	2.75	2.82	3.44	3.09	2.94	2.62	3.24
% CO2 > 27	10%	16%	9%	21%	17%	11%	12%	11%	13%	5%	8%	22%

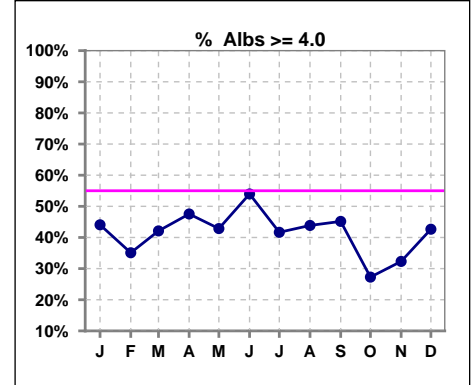


Methodology: a) All labs for 'Adequacy of Dialysis', 'Nutrition', 'Osteodystrophy', 'Anemia' and 'Diabetes' based on last value of month; b) BP's and #L processed are average of all values for month; c) Access data takes last access of month; d) Values for SGA and 'Infection Control' use most recent result.

*Albumin values use BCG method - as of July 2001

II. NUTRITION

	Jan	Feb	Mar	Apr	May	Jun	Jul	Aug	Sep	Oct	Nov	Dec
# Albumin	59	57	57	61	63	63	60	57	62	66	65	68
# Albumin >= 4.0	26	20	24	29	27	34	25	25	28	18	21	29
Pop. Mean	3.9	3.8	3.8	3.8	3.8	3.9	3.8	3.8	3.8	3.7	3.7	3.8
Std. Deviation	0.35	0.31	0.37	0.40	0.39	0.39	0.37	0.41	0.43	0.45	0.42	0.42
% Alb >= 4.0	44%	35%	42%	48%	43%	54%	42%	44%	45%	27%	32%	43%

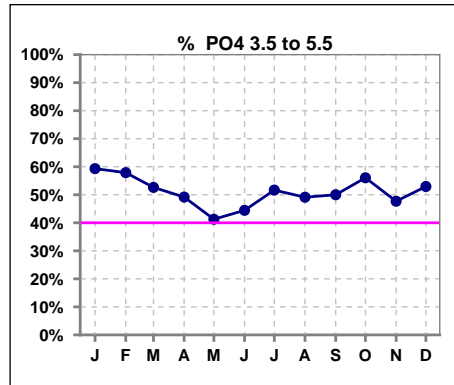


Methodology: a) All labs for 'Adequacy of Dialysis', 'Nutrition', 'Osteodystrophy', 'Anemia' and 'Diabetes' based on last value of month; b) BP's and #L processed are average of all values for month; c) Access data takes last access of month; d) Values for SGA and 'Infection Control' use most recent result.

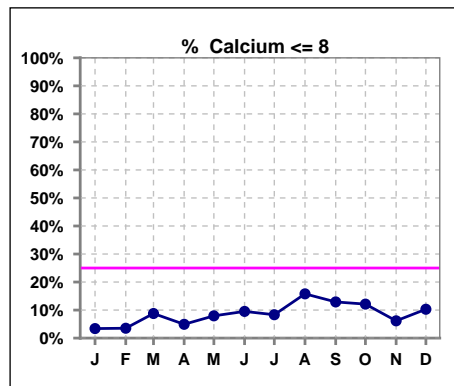
Lab methodology for PTH changed January 2012

III. OSTEODYSTROPHY

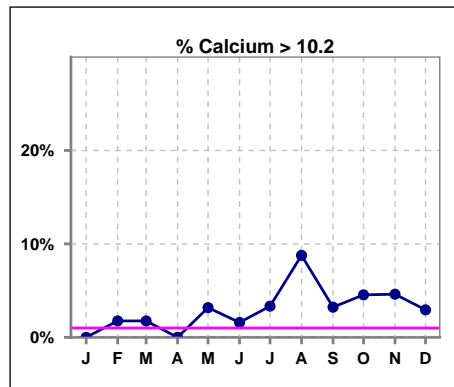
	Jan	Feb	Mar	Apr	May	Jun	Jul	Aug	Sep	Oct	Nov	Dec
# PO4	59	57	57	61	63	63	60	57	62	66	65	68
# PO4 3.5 to 5.5	35	33	30	30	26	28	31	28	31	37	31	36
Pop. Mean	5.3	5.4	5.5	5.8	6.0	5.7	5.9	5.9	5.9	5.7	5.7	5.6
Std. Deviation	1.26	1.24	1.14	1.43	1.40	1.60	1.59	1.91	1.81	1.74	1.65	1.72
% PO4 3.5 to 5.5	59%	58%	53%	49%	41%	44%	52%	49%	50%	56%	48%	53%



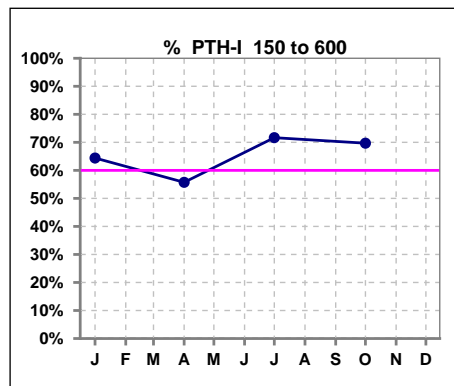
	Jan	Feb	Mar	Apr	May	Jun	Jul	Aug	Sep	Oct	Nov	Dec
# Calcium	59	57	57	61	63	63	60	57	62	66	65	68
# Calcium <= 8	2	2	5	3	5	6	5	9	8	8	4	7
Pop. Mean	9.1	9.0	9.2	9.2	9.1	9.2	9.1	9.1	9.1	9.0	9.1	9.0
Std. Deviation	0.58	0.77	0.70	0.70	0.73	0.75	0.76	0.94	0.74	0.81	0.71	0.71
% Calcium <= 8	3%	4%	9%	5%	8%	10%	8%	16%	13%	12%	6%	10%



	Jan	Feb	Mar	Apr	May	Jun	Jul	Aug	Sep	Oct	Nov	Dec
# Calcium	59	57	57	61	63	63	60	57	62	66	65	68
# Calcium > 10.2	0	1	1	0	2	1	2	5	2	3	3	2
Pop. Mean	9.1	9.0	9.2	9.2	9.1	9.2	9.1	9.1	9.1	9.0	9.1	9.0
Std. Deviation	0.58	0.77	0.70	0.70	0.73	0.75	0.76	0.94	0.74	0.81	0.71	0.71
% Calcium > 10.2	0%	2%	2%	0%	3%	2%	3%	9%	3%	5%	5%	3%



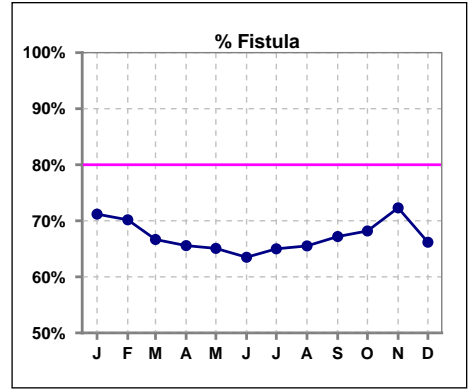
	Jan	Feb	Mar	Apr	May	Jun	Jul	Aug	Sep	Oct	Nov	Dec
# PTH-I	59			61			60			66		
# PTH-I 150 to 600	38			34			43			46		
Pop. Mean	402			423			374			446		
Std. Deviation	312			363			281			288		
% PTH-I 150 to 600	64%			56%			72%			70%		



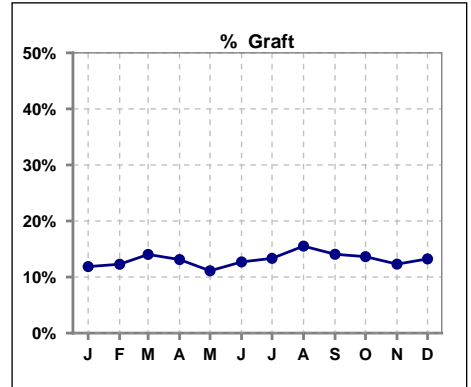
Methodology: a) All labs for 'Adequacy of Dialysis', 'Nutrition', 'Osteodystrophy', 'Anemia' and 'Diabetes' based on last value of month; b) BP's and #L processed are average of all values for month; c) Access data takes last access of month; d) Values for SGA and 'Infection Control' use most recent result.

IV. ACCESS

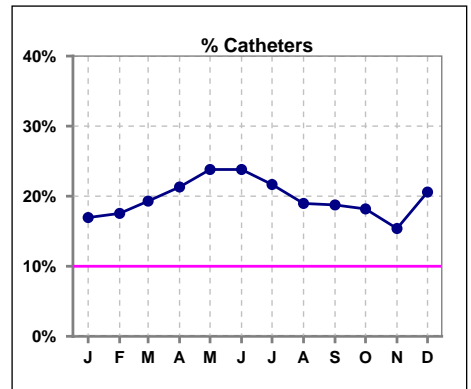
	Jan	Feb	Mar	Apr	May	Jun	Jul	Aug	Sep	Oct	Nov	Dec
# Access	59	57	57	61	63	63	60	58	64	66	65	68
# Fistula	42	40	38	40	41	40	39	38	43	45	47	45
% Fistula	71%	70%	67%	66%	65%	63%	65%	66%	67%	68%	72%	66%



	Jan	Feb	Mar	Apr	May	Jun	Jul	Aug	Sep	Oct	Nov	Dec
# Access	59	57	57	61	63	63	60	58	64	66	65	68
# Graft	7	7	8	8	7	8	8	9	9	9	8	9
% Graft	12%	12%	14%	13%	11%	13%	13%	16%	14%	14%	12%	13%



	Jan	Feb	Mar	Apr	May	Jun	Jul	Aug	Sep	Oct	Nov	Dec
# Access	59	57	57	61	63	63	60	58	64	66	65	68
# Catheters	10	10	11	13	15	15	13	11	12	12	10	14
% Catheters	17%	18%	19%	21%	24%	24%	22%	19%	19%	18%	15%	21%



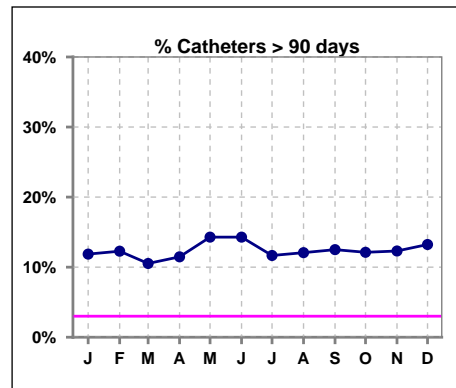
Methodology: a) All labs for 'Adequacy of Dialysis', 'Nutrition', 'Osteodystrophy', 'Anemia' and 'Diabetes' based on last value of month; b) BP's and #L processed are average of all values for month; c) Access data takes last access of month; d) Values for SGA and 'Infection Control' use most recent result.

IV. ACCESS - CONT.

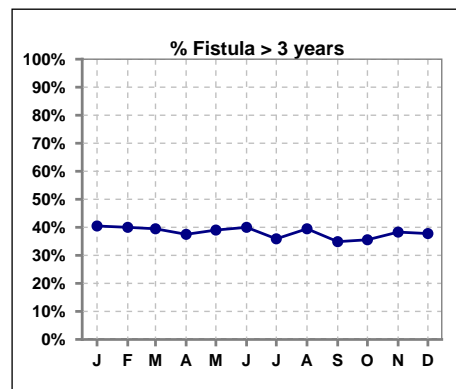
Catheters > 90 days

	Jan	Feb	Mar	Apr	May	Jun	Jul	Aug	Sep	Oct	Nov	Dec
# Access	59	57	57	61	63	63	60	58	64	66	65	68
# Catheters	7	7	6	7	9	9	7	7	8	8	8	9
% Catheters	12%	12%	11%	11%	14%	14%	12%	12%	13%	12%	12%	13%

Definition: Catheter in use on last treatment of the month



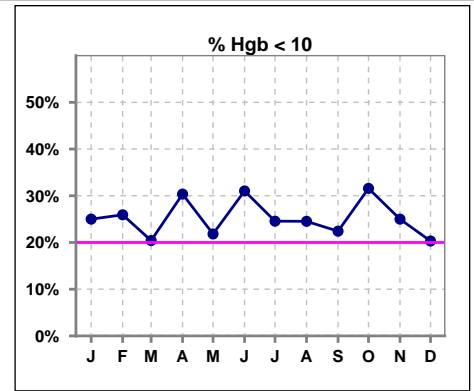
	Jan	Feb	Mar	Apr	May	Jun	Jul	Aug	Sep	Oct	Nov	Dec
# Fistula	42	40	38	40	41	40	39	38	43	45	47	45
# Fistula > 3 yrs	17	16	15	15	16	16	14	15	15	16	18	17
% Fistula > 3 yrs	40%	40%	39%	38%	39%	40%	36%	39%	35%	36%	38%	38%



V. ANEMIA

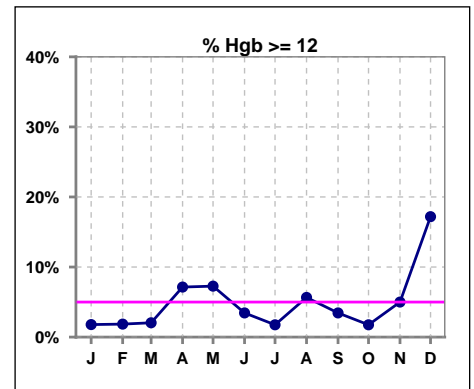
	Jan	Feb	Mar	Apr	May	Jun	Jul	Aug	Sep	Oct	Nov	Dec
# Hgb	56	54	49	56	55	58	57	53	58	57	60	64
# Hgb < 10	14	14	10	17	12	18	14	13	13	18	15	13
Pop. Mean	10.6	10.6	10.6	10.5	10.6	10.3	10.5	10.5	10.7	10.2	10.6	10.8
Std. Deviation	1.0	1.2	1.0	1.1	1.1	1.1	1.0	1.3	1.2	1.1	1.3	1.2
% Hgb < 10	25%	26%	20%	30%	22%	31%	25%	25%	22%	32%	25%	20%

Note: Excludes patients who received no ESA in month.



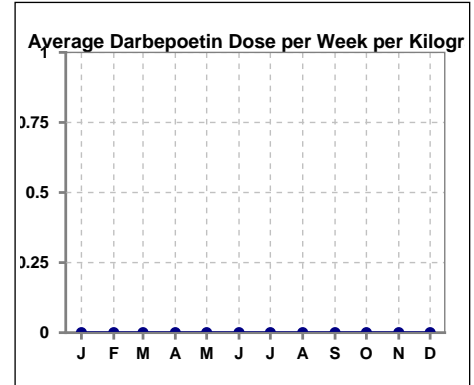
	Jan	Feb	Mar	Apr	May	Jun	Jul	Aug	Sep	Oct	Nov	Dec
# Hgb	56	54	49	56	55	58	57	53	58	57	60	64
# Hgb >= 12	1	1	1	4	4	2	1	3	2	1	3	11
Pop. Mean	10.6	10.6	10.6	10.5	10.6	10.3	10.5	10.5	10.7	10.2	10.6	10.8
Std. Deviation	1.0	1.2	1.0	1.1	1.1	1.1	1.0	1.3	1.2	1.1	1.3	1.2
% Hgb >= 12	2%	2%	2%	7%	7%	3%	2%	6%	3%	2%	5%	17%

Note: Excludes patients who received no ESA in month.



Average Darbepoetin Dose per Week per Kilogram

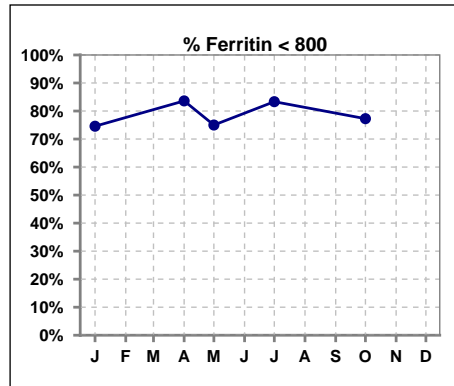
	Jan	Feb	Mar	Apr	May	Jun	Jul	Aug	Sep	Oct	Nov	Dec
# Average Darbepoetin	0	0	0	0	0	0	0	0	0	0	0	0



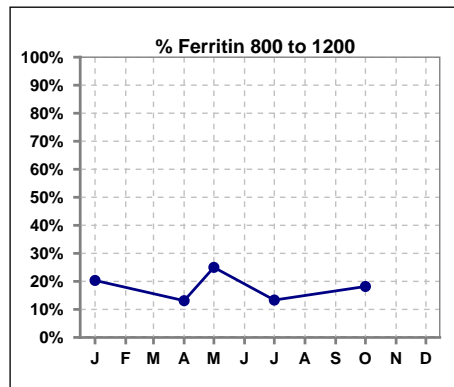
V. ANEMIA - CONT.

Iron Profile

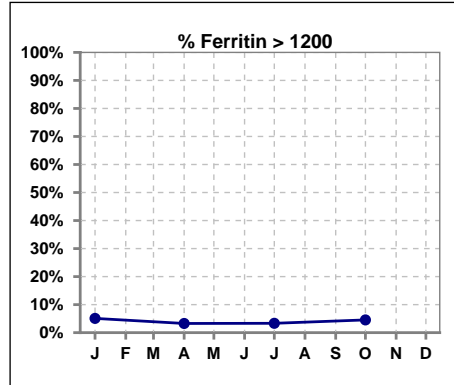
	Jan	Feb	Mar	Apr	May	Jun	Jul	Aug	Sep	Oct	Nov	Dec
# Ferritin	59			61	8		60			66		
# Ferritin < 800	44			51	6		50			51		
Pop. Mean	584			535	469		567			532		
Std. Deviation	347			424	430		680			372		
% Ferritin < 800	75%			84%	75%		83%			77%		



	Jan	Feb	Mar	Apr	May	Jun	Jul	Aug	Sep	Oct	Nov	Dec
# Ferritin	59			61	8		60			66		
# Ferritin 800 to 1200	12			8	2		8			12		
Pop. Mean	584			535	469		567			532		
Std. Deviation	347			424	430		680			372		
% Ferritin 800 to 1200	20%			13%	25%		13%			18%		



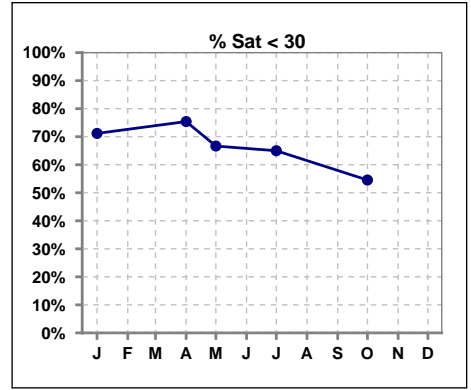
	Jan	Feb	Mar	Apr	May	Jun	Jul	Aug	Sep	Oct	Nov	Dec
# Ferritin	59			61	8		60			66		
# Ferritin > 1200	3			2			2			3		
Pop. Mean	584			535	469		567			532		
Std. Deviation	347			424	430		680			372		
% Ferritin > 1200	5%			3%			3%			5%		



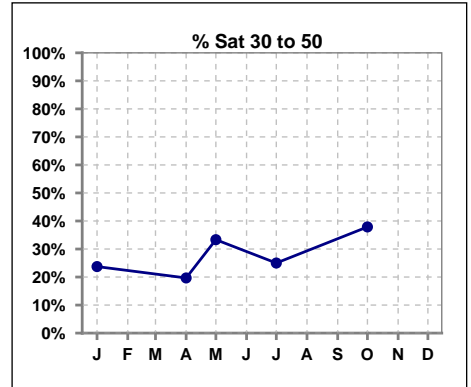
Methodology: a) All labs for 'Adequacy of Dialysis', 'Nutrition', 'Osteodystrophy', 'Anemia' and 'Diabetes' based on last value of month; b) BP's and #L processed are average of all values for month; c) Access data takes last access of month; d) Values for SGA and 'Infection Control' use most recent result.

V. ANEMIA - CONT.

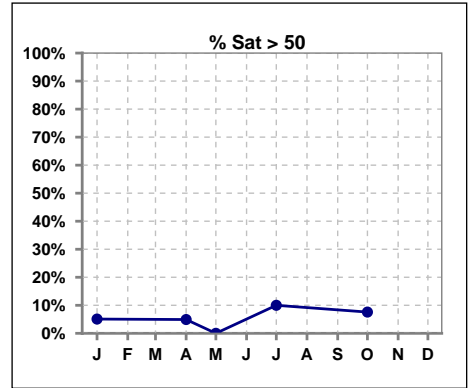
	Jan	Feb	Mar	Apr	May	Jun	Jul	Aug	Sep	Oct	Nov	Dec
# % Sat	59			61	12		60			66		
# % Sat < 30	42			46	8		39			36		
Pop. Mean	27			27	25		32			30		
Std. Deviation	11			13	7		20			15		
% % Sat < 30	71%			75%	67%		65%			55%		



	Jan	Feb	Mar	Apr	May	Jun	Jul	Aug	Sep	Oct	Nov	Dec
# % Sat	59			61	12		60			66		
# % Sat 30 to 50	14			12	4		15			25		
Pop. Mean	27			27	25		32			30		
Std. Deviation	11			13	7		20			15		
% % Sat 30 to 50	24%			20%	33%		25%			38%		

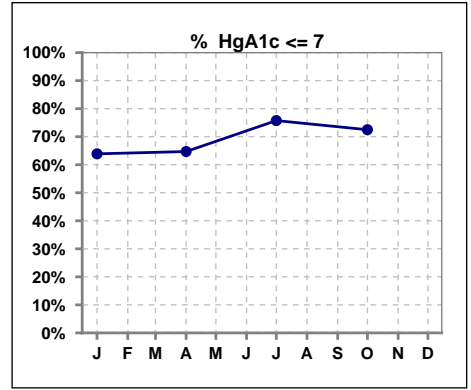


	Jan	Feb	Mar	Apr	May	Jun	Jul	Aug	Sep	Oct	Nov	Dec
# % Sat	59			61	12		60			66		
# % Sat > 50	3			3	0		6			5		
Pop. Mean	27			27	25		32			30		
Std. Deviation	11			13	7		20			15		
% % Sat > 50	5%			5%	0%		10%			8%		



VI. Diabetes

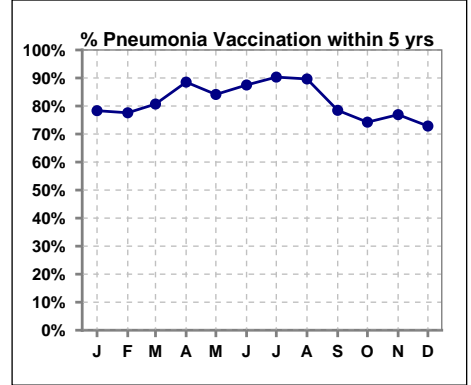
	Jan	Feb	Mar	Apr	May	Jun	Jul	Aug	Sep	Oct	Nov	Dec
# HgA1c	36			34			33			40		
# HgA1c <= 7	23			22			25			29		
Pop. Mean	6.5			6.6			6.3			6.6		
Std. Deviation	1.40			1.59			1.39			1.73		
% HgA1c <= 7	64%			65%			76%			73%		



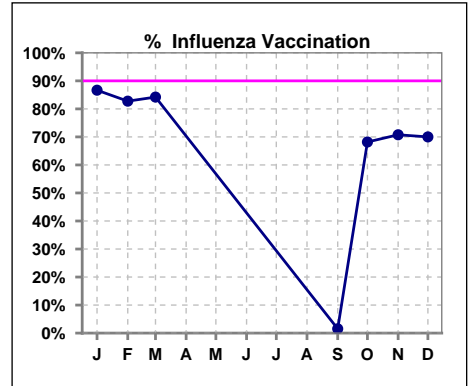
VII. Infection Control

Pneumonia vaccination within the past five years

	Jan	Feb	Mar	Apr	May	Jun	Jul	Aug	Sep	Oct	Nov	Dec
# Patient	60	58	57	61	63	64	62	58	65	66	65	70
# Pneumonia	47	45	46	54	53	56	56	52	51	49	50	51
% Pneumonia	78%	78%	81%	89%	84%	88%	90%	90%	78%	74%	77%	73%



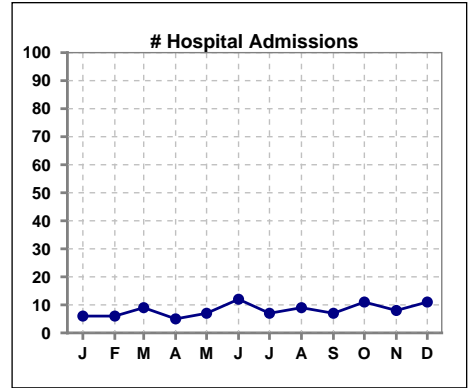
	Jan	Feb	Mar	Apr	May	Jun	Jul	Aug	Sep	Oct	Nov	Dec
# Patient	60	58	57						65	66	65	70
# Influenza	52	48	48						1	45	46	49
% Influenza	87%	83%	84%						2%	68%	71%	70%



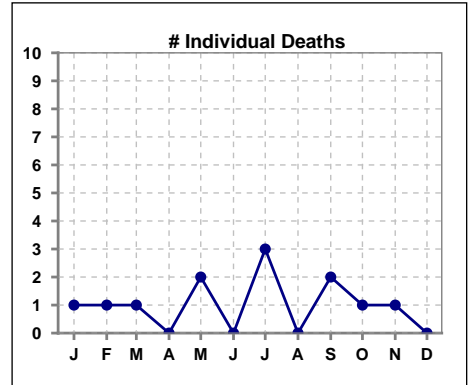
Methodology: a) All labs for 'Adequacy of Dialysis', 'Nutrition', 'Osteodystrophy', 'Anemia' and 'Diabetes' based on last value of month; b) BP's and #L processed are average of all values for month; c) Access data takes last access of month; d) Values for SGA and 'Infection Control' use most recent result.

VIII. Outcome measures

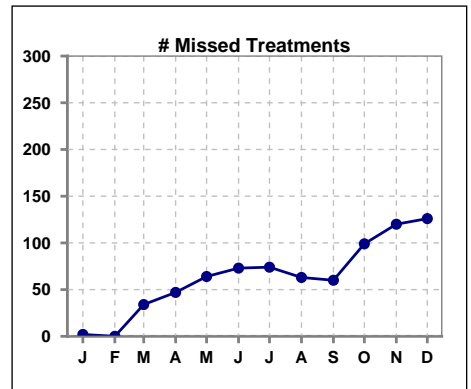
	Jan	Feb	Mar	Apr	May	Jun	Jul	Aug	Sep	Oct	Nov	Dec
# Patient	60	58	57	61	63	64	62	58	65	66	65	70
# Hospital Admissions	6	6	9	5	7	12	7	9	7	11	8	11



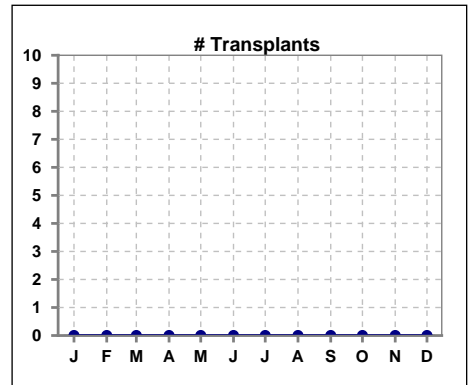
	Jan	Feb	Mar	Apr	May	Jun	Jul	Aug	Sep	Oct	Nov	Dec
# Patient	60	58	57	61	63	64	62	58	65	66	65	70
# Individual Deaths	1	1	1	0	2	0	3	0	2	1	1	0



	Jan	Feb	Mar	Apr	May	Jun	Jul	Aug	Sep	Oct	Nov	Dec
# Patient	60	58	57	61	63	64	62	58	65	66	65	70
# Missed Treatments	2	0	34	47	64	73	74	63	60	99	120	126



	Jan	Feb	Mar	Apr	May	Jun	Jul	Aug	Sep	Oct	Nov	Dec
# Patient	60	58	57	61	63	64	62	58	65	66	65	70
# Transplants	0	0	0	0	0	0	0	0	0	0	0	0



Methodology: a) All labs for 'Adequacy of Dialysis', 'Nutrition', 'Osteodystrophy', 'Anemia' and 'Diabetes' based on last value of month; b) BP's and #L processed are average of all values for month; c) Access data takes last access of month; d) Values for SGA and 'Infection Control' use most recent result.