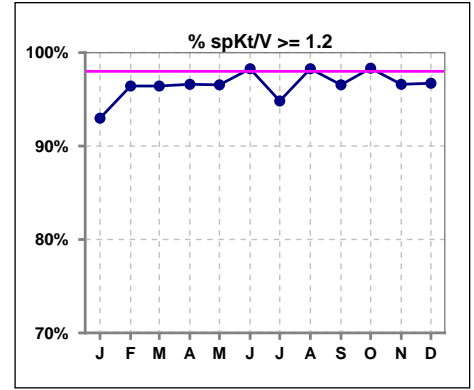
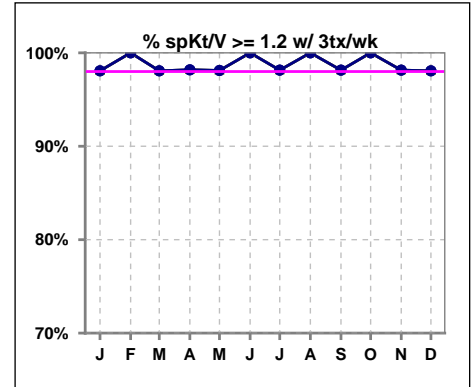


**I. ADEQUACY OF DIALYSIS**

	Jan	Feb	Mar	Apr	May	Jun	Jul	Aug	Sep	Oct	Nov	Dec
# spKt/V	57	56	56	59	58	58	58	58	58	60	59	61
# spKt/V >= 1.2	53	54	54	57	56	57	55	57	56	59	57	59
Pop. Mean	1.62	1.67	1.67	1.64	1.65	1.65	1.72	1.62	1.66	1.61	1.64	1.61
Std. Deviation	0.34	0.29	0.33	0.31	0.30	0.32	0.58	0.30	0.29	0.29	0.30	0.33
% spKt/V >= 1.2	93%	96%	96%	97%	97%	98%	95%	98%	97%	98%	97%	97%



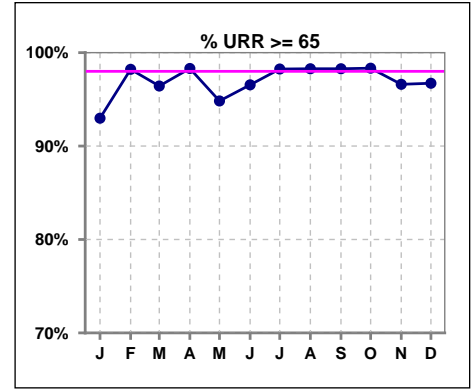
	Jan	Feb	Mar	Apr	May	Jun	Jul	Aug	Sep	Oct	Nov	Dec
# spKt/V w/ 3tx/wk	52	52	52	55	53	52	54	54	54	55	54	52
# spKt/V >= 1.2 w/3tx/wk	51	52	51	54	52	52	53	54	53	55	53	51
Pop. Mean	1.67	1.68	1.70	1.66	1.67	1.69	1.75	1.64	1.68	1.63	1.67	1.64
Std. Deviation	0.31	0.28	0.32	0.30	0.29	0.31	0.58	0.30	0.29	0.29	0.29	0.34
% >= 1.2 w/3tx/wk	98%	100%	98%	98%	98%	100%	98%	100%	98%	100%	98%	98%



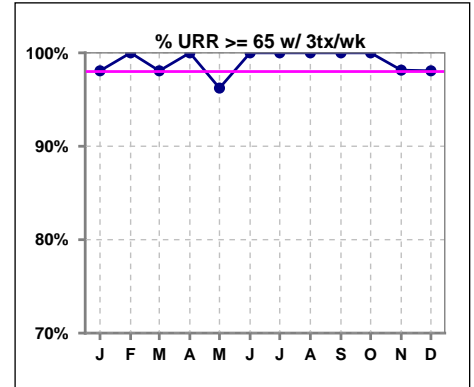
Methodology: a) All labs for 'Adequacy of Dialysis', 'Nutrition', 'Osteodystrophy', 'Anemia' and 'Diabetes' based on last value of month; b) BP's and #L processed are average of all values for month; c) Access data takes last access of month; d) Values for SGA and 'Infection Control' use most recent result.

**I. ADEQUACY OF DIALYSIS - CONT.**

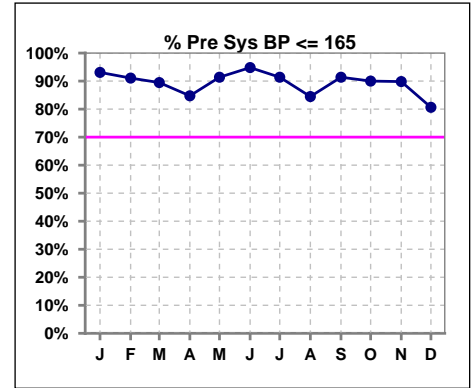
	Jan	Feb	Mar	Apr	May	Jun	Jul	Aug	Sep	Oct	Nov	Dec
# URR	57	56	56	59	58	58	57	58	58	60	59	61
# URR >= 65	53	55	54	58	55	56	56	57	57	59	57	59
Pop. Mean	75	76	76	75	75	75	75	75	76	75	75	74
Std. Deviation	7.01	5.41	6.47	6.02	6.04	6.26	6.54	5.66	5.64	5.83	5.71	5.99
% URR >= 65	93%	98%	96%	98%	95%	97%	98%	98%	98%	98%	97%	97%



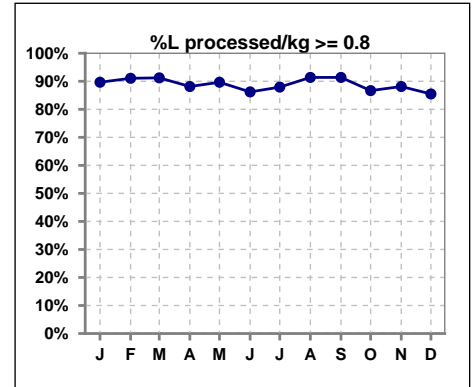
	Jan	Feb	Mar	Apr	May	Jun	Jul	Aug	Sep	Oct	Nov	Dec
# URR w/ 3tx/wk	52	52	52	55	53	52	53	54	54	55	54	52
# URR>=65 w/ 3tx/wk	51	52	51	55	51	52	53	54	54	55	53	51
Pop. Mean	76	76	76	76	76	76	76	75	76	75	76	75
Std. Deviation	5.37	4.96	6.06	5.57	5.69	5.68	6.00	5.51	5.37	5.61	5.38	5.74
% URR>=65 w/ 3tx/wk	98%	100%	98%	100%	96%	100%	100%	100%	100%	100%	98%	98%



	Jan	Feb	Mar	Apr	May	Jun	Jul	Aug	Sep	Oct	Nov	Dec
# Pre Sys BP	58	56	57	59	58	58	58	58	58	60	59	62
# Pre Sys BP <= 165	54	51	53	51	53	55	54	51	54	54	53	52
Pop. Mean	140	139	138	139	139	137	136	138	136	139	142	143
Std. Deviation	18.1	19.5	20.2	19.9	18.1	19.7	22.1	22.2	20.1	18.0	18.4	20.8
% Pre Sys BP <=165	93%	91%	89%	85%	91%	95%	91%	84%	91%	90%	90%	81%



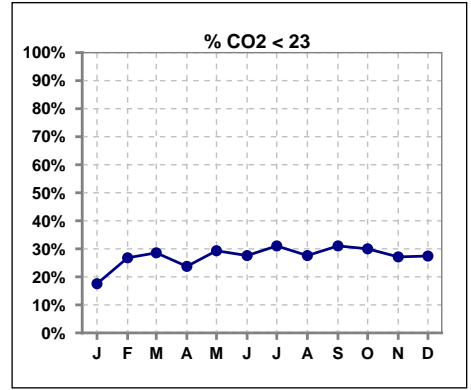
	Jan	Feb	Mar	Apr	May	Jun	Jul	Aug	Sep	Oct	Nov	Dec
# L processed/kg	58	56	57	59	58	58	58	58	58	60	59	62
# L processed/kg>=0.8	52	51	52	52	52	50	51	53	53	52	52	53
Pop. Mean	1	1	1	1	1	1	1	1	1	1	1	1
Std. Deviation	0.3	0.4	0.3	0.3	0.3	0.3	0.3	0.3	0.3	0.3	0.3	0.3
% L processed/kg>=0.8	90%	91%	91%	88%	90%	86%	88%	91%	91%	87%	88%	85%



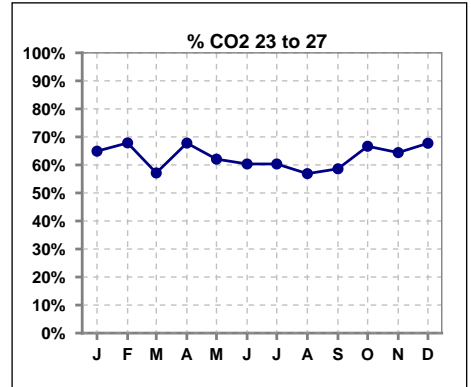
Methodology: a) All labs for 'Adequacy of Dialysis', 'Nutrition', 'Osteodystrophy', 'Anemia' and 'Diabetes' based on last value of month; b) BP's and #L processed are average of all values for month; c) Access data takes last access of month; d) Values for SGA and 'Infection Control' use most recent result.

**I. ADEQUACY OF DIALYSIS - CONT.**

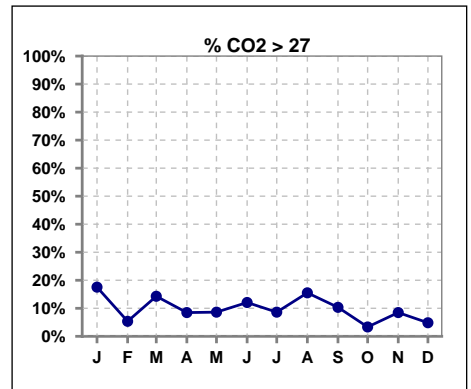
	Jan	Feb	Mar	Apr	May	Jun	Jul	Aug	Sep	Oct	Nov	Dec
# CO2	57	56	56	59	58	58	58	58	58	60	59	62
# CO2 < 23	10	15	16	14	17	16	18	16	18	18	16	17
Pop. Mean	25	24	24	24	24	24	24	24	24	23	24	24
Std. Deviation	2.57	2.63	2.73	2.64	2.59	2.56	2.71	2.82	2.82	2.58	2.44	2.81
<b>% CO2 &lt; 23</b>	<b>18%</b>	<b>27%</b>	<b>29%</b>	<b>24%</b>	<b>29%</b>	<b>28%</b>	<b>31%</b>	<b>28%</b>	<b>31%</b>	<b>30%</b>	<b>27%</b>	<b>27%</b>



	Jan	Feb	Mar	Apr	May	Jun	Jul	Aug	Sep	Oct	Nov	Dec
# CO2	57	56	56	59	58	58	58	58	58	60	59	62
# CO2 23 to 27	37	38	32	40	36	35	35	33	34	40	38	42
Pop. Mean	25	24	24	24	24	24	24	24	24	23	24	24
Std. Deviation	2.57	2.63	2.73	2.64	2.59	2.56	2.71	2.82	2.82	2.58	2.44	2.81
<b>% CO2 23 to 27</b>	<b>65%</b>	<b>68%</b>	<b>57%</b>	<b>68%</b>	<b>62%</b>	<b>60%</b>	<b>60%</b>	<b>57%</b>	<b>59%</b>	<b>67%</b>	<b>64%</b>	<b>68%</b>



	Jan	Feb	Mar	Apr	May	Jun	Jul	Aug	Sep	Oct	Nov	Dec
# CO2	57	56	56	59	58	58	58	58	58	60	59	62
# CO2 > 27	10	3	8	5	5	7	5	9	6	2	5	3
Pop. Mean	25	24	24	24	24	24	24	24	24	23	24	24
Std. Deviation	2.57	2.63	2.73	2.64	2.59	2.56	2.71	2.82	2.82	2.58	2.44	2.81
<b>% CO2 &gt; 27</b>	<b>18%</b>	<b>5%</b>	<b>14%</b>	<b>8%</b>	<b>9%</b>	<b>12%</b>	<b>9%</b>	<b>16%</b>	<b>10%</b>	<b>3%</b>	<b>8%</b>	<b>5%</b>

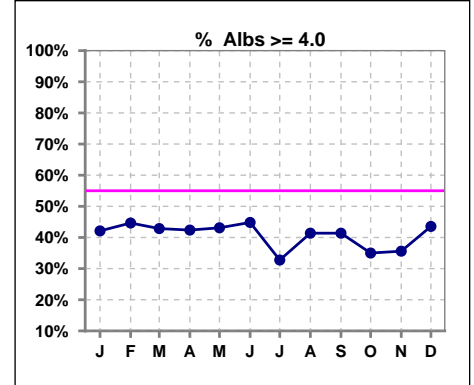


Methodology: a) All labs for 'Adequacy of Dialysis', 'Nutrition', 'Osteodystrophy', 'Anemia' and 'Diabetes' based on last value of month; b) BP's and #L processed are average of all values for month; c) Access data takes last access of month; d) Values for SGA and 'Infection Control' use most recent result.

\*Albumin values use BCG method - as of July 2001

**II. NUTRITION**

	Jan	Feb	Mar	Apr	May	Jun	Jul	Aug	Sep	Oct	Nov	Dec
# Albumin	57	56	56	59	58	58	58	58	58	60	59	62
# Albumin >= 4.0	24	25	24	25	25	26	19	24	24	21	21	27
Pop. Mean	3.8	3.9	3.9	3.8	3.9	3.9	3.8	3.9	3.8	3.7	3.8	3.8
Std. Deviation	0.39	0.40	0.47	0.47	0.40	0.40	0.39	0.39	0.39	0.41	0.43	0.43
% Alb >= 4.0	42%	45%	43%	42%	43%	45%	33%	41%	41%	35%	36%	44%

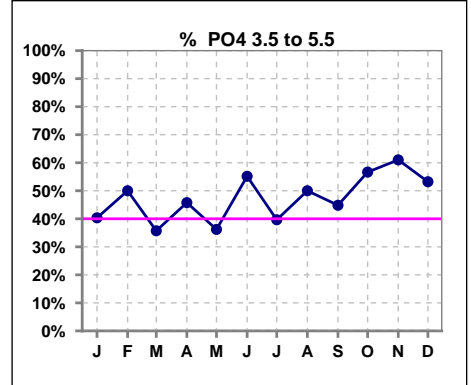


Methodology: a) All labs for 'Adequacy of Dialysis', 'Nutrition', 'Osteodystrophy', 'Anemia' and 'Diabetes' based on last value of month; b) BP's and #L processed are average of all values for month; c) Access data takes last access of month; d) Values for SGA and 'Infection Control' use most recent result.

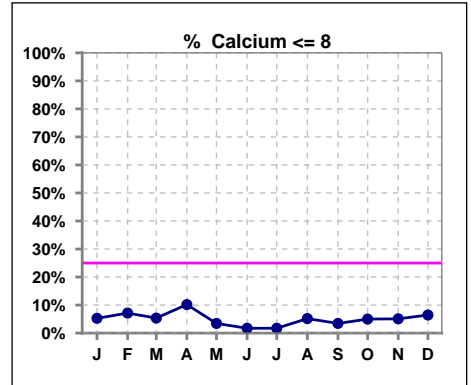
Lab methodology for PTH changed January 2012

**III. OSTEODYSTROPHY**

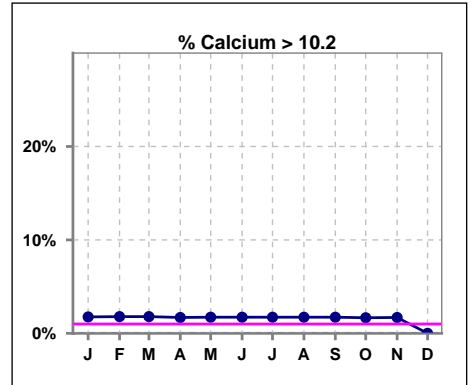
	Jan	Feb	Mar	Apr	May	Jun	Jul	Aug	Sep	Oct	Nov	Dec
# PO4	57	56	56	59	58	58	58	58	58	60	59	62
# PO4 3.5 to 5.5	23	28	20	27	21	32	23	29	26	34	36	33
Pop. Mean	5.6	5.4	5.8	5.8	6.0	6.0	5.9	5.6	5.4	5.3	5.1	5.6
Std. Deviation	1.65	1.61	2.23	1.57	1.51	1.47	1.46	1.57	1.56	1.30	1.58	1.68
% PO4 3.5 to 5.5	40%	50%	36%	46%	36%	55%	40%	50%	45%	57%	61%	53%



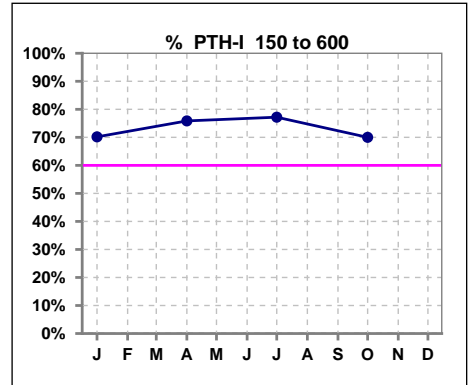
	Jan	Feb	Mar	Apr	May	Jun	Jul	Aug	Sep	Oct	Nov	Dec
# Calcium	57	56	56	59	58	58	58	58	58	60	59	62
# Calcium <= 8	3	4	3	6	2	1	1	3	2	3	3	4
Pop. Mean	9.1	9.2	9.2	9.2	9.2	9.3	9.3	9.2	9.2	9.1	9.0	9.0
Std. Deviation	0.63	0.68	0.68	0.78	0.64	0.60	0.64	0.64	0.66	0.65	0.60	0.64
% Calcium <= 8	5%	7%	5%	10%	3%	2%	2%	5%	3%	5%	5%	6%



	Jan	Feb	Mar	Apr	May	Jun	Jul	Aug	Sep	Oct	Nov	Dec
# Calcium	57	56	56	59	58	58	58	58	58	60	59	62
# Calcium > 10.2	1	1	1	1	1	1	1	1	1	1	1	0
Pop. Mean	9.1	9.2	9.2	9.2	9.2	9.3	9.3	9.2	9.2	9.1	9.0	9.0
Std. Deviation	0.63	0.68	0.68	0.78	0.64	0.60	0.64	0.64	0.66	0.65	0.60	0.64
% Calcium > 10.2	2%	2%	2%	2%	2%	2%	2%	2%	2%	2%	2%	0%



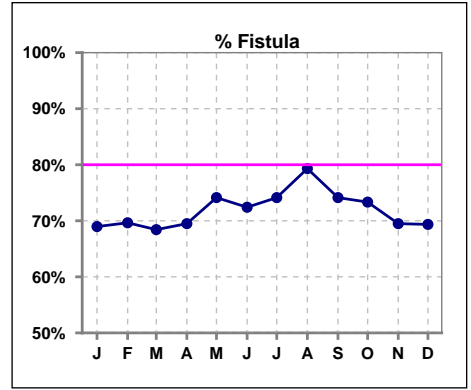
	Jan	Feb	Mar	Apr	May	Jun	Jul	Aug	Sep	Oct	Nov	Dec
# PTH-I	57			58			57			60		
# PTH-I 150 to 600	40			44			44			42		
Pop. Mean	422			416			399			420		
Std. Deviation	330			251			310			374		
% PTH-I 150 to 600	70%			76%			77%			70%		



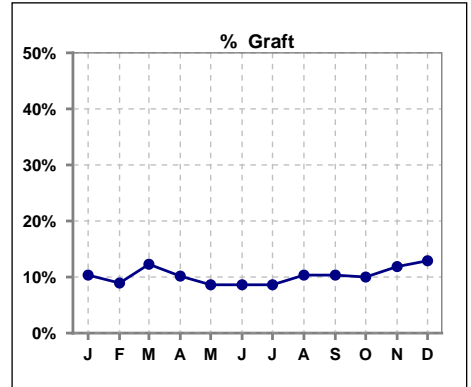
Methodology: a) All labs for 'Adequacy of Dialysis', 'Nutrition', 'Osteodystrophy', 'Anemia' and 'Diabetes' based on last value of month; b) BP's and #L processed are average of all values for month; c) Access data takes last access of month; d) Values for SGA and 'Infection Control' use most recent result.

**IV. ACCESS**

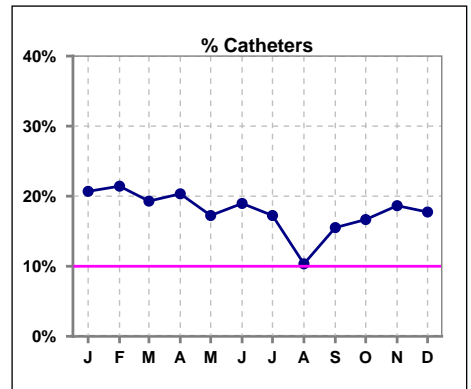
	Jan	Feb	Mar	Apr	May	Jun	Jul	Aug	Sep	Oct	Nov	Dec
# Access	58	56	57	59	58	58	58	58	58	60	59	62
# Fistula	40	39	39	41	43	42	43	46	43	44	41	43
% Fistula	69%	70%	68%	69%	74%	72%	74%	79%	74%	73%	69%	69%



	Jan	Feb	Mar	Apr	May	Jun	Jul	Aug	Sep	Oct	Nov	Dec
# Access	58	56	57	59	58	58	58	58	58	60	59	62
# Graft	6	5	7	6	5	5	5	6	6	6	7	8
% Graft	10%	9%	12%	10%	9%	9%	9%	10%	10%	10%	12%	13%



	Jan	Feb	Mar	Apr	May	Jun	Jul	Aug	Sep	Oct	Nov	Dec
# Access	58	56	57	59	58	58	58	58	58	60	59	62
# Catheters	12	12	11	12	10	11	10	6	9	10	11	11
% Catheters	21%	21%	19%	20%	17%	19%	17%	10%	16%	17%	19%	18%



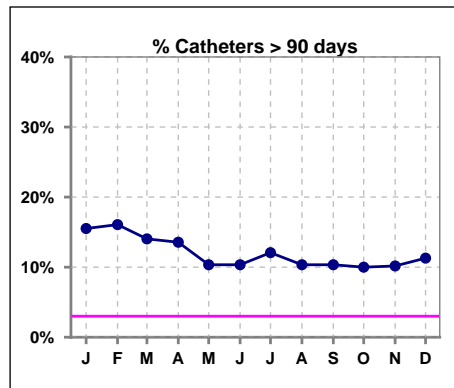
Methodology: a) All labs for 'Adequacy of Dialysis', 'Nutrition', 'Osteodystrophy', 'Anemia' and 'Diabetes' based on last value of month; b) BP's and #L processed are average of all values for month; c) Access data takes last access of month; d) Values for SGA and 'Infection Control' use most recent result.

**IV. ACCESS - CONT.**

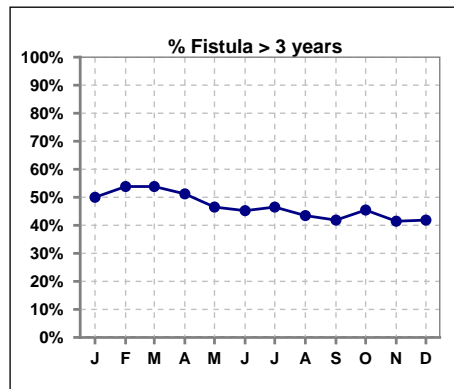
**Catheters > 90 days**

	Jan	Feb	Mar	Apr	May	Jun	Jul	Aug	Sep	Oct	Nov	Dec
# Access	58	56	57	59	58	58	58	58	58	60	59	62
# Catheters	9	9	8	8	6	6	7	6	6	6	6	7
% Catheters	16%	16%	14%	14%	10%	10%	12%	10%	10%	10%	10%	11%

Definition: Catheter in use on last treatment of the month



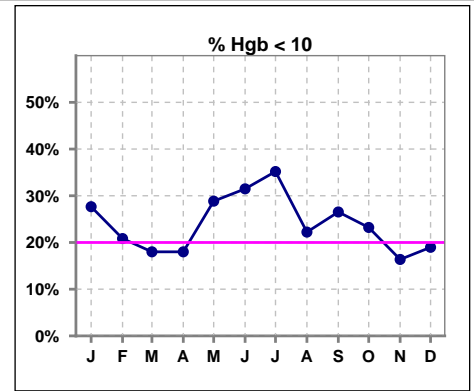
	Jan	Feb	Mar	Apr	May	Jun	Jul	Aug	Sep	Oct	Nov	Dec
# Fistula	40	39	39	41	43	42	43	46	43	44	41	43
# Fistula > 3 yrs	20	21	21	21	20	19	20	20	18	20	17	18
% Fistula > 3 yrs	50%	54%	54%	51%	47%	45%	47%	43%	42%	45%	41%	42%



**V. ANEMIA**

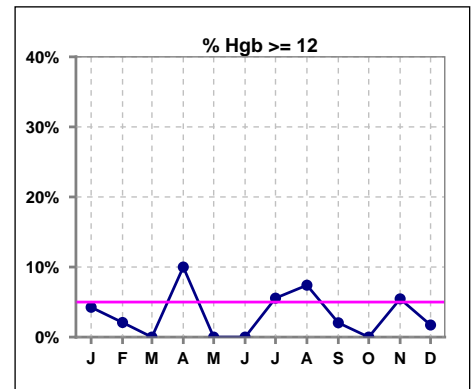
	Jan	Feb	Mar	Apr	May	Jun	Jul	Aug	Sep	Oct	Nov	Dec
# Hgb	47	48	50	50	52	54	54	54	49	56	55	58
# Hgb < 10	13	10	9	9	15	17	19	12	13	13	9	11
Pop. Mean	10.5	10.6	10.5	10.6	10.4	10.4	10.4	10.6	10.5	10.5	10.7	10.6
Std. Deviation	1.1	1.0	1.0	1.2	1.1	1.1	1.0	1.1	1.3	1.0	1.0	1.0
% Hgb < 10	28%	21%	18%	18%	29%	31%	35%	22%	27%	23%	16%	19%

Note: Excludes patients who received no ESA in month.



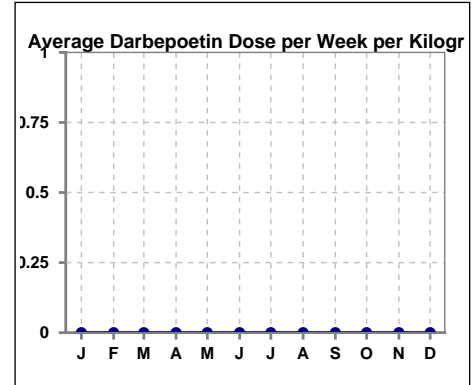
	Jan	Feb	Mar	Apr	May	Jun	Jul	Aug	Sep	Oct	Nov	Dec
# Hgb	47	48	50	50	52	54	54	54	49	56	55	58
# Hgb >= 12	2	1	0	5	0	0	3	4	1	0	3	1
Pop. Mean	10.5	10.6	10.5	10.6	10.4	10.4	10.4	10.6	10.5	10.5	10.7	10.6
Std. Deviation	1.1	1.0	1.0	1.2	1.1	1.1	1.0	1.1	1.3	1.0	1.0	1.0
% Hgb >= 12	4%	2%	0%	10%	0%	0%	6%	7%	2%	0%	5%	2%

Note: Excludes patients who received no ESA in month.



**Average Darbepoetin Dose per Week per Kilogram**

	Jan	Feb	Mar	Apr	May	Jun	Jul	Aug	Sep	Oct	Nov	Dec
# Average Darbepoetin	0	0	0	0	0	0	0	0	0	0	0	0

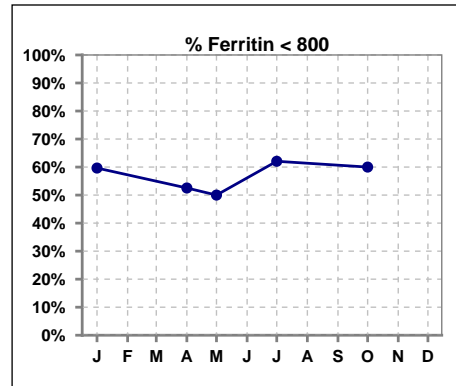




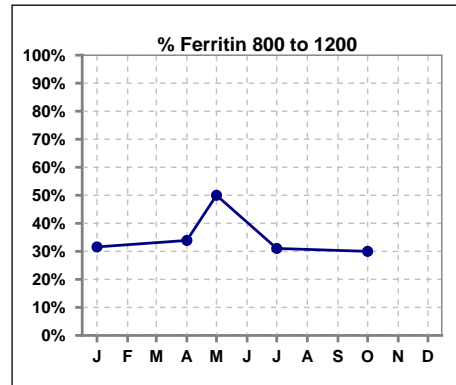
**V. ANEMIA - CONT.**

**Iron Profile**

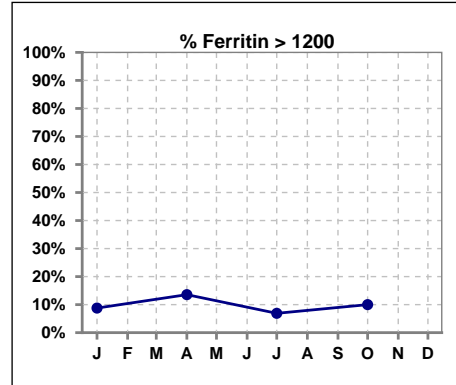
	Jan	Feb	Mar	Apr	May	Jun	Jul	Aug	Sep	Oct	Nov	Dec
# Ferritin	57			59	6		58			60		
# Ferritin < 800	34			31	3		36			36		
Pop. Mean	787			767	656		686			685		
Std. Deviation	342			381	428		353			355		
<b>% Ferritin &lt; 800</b>	<b>60%</b>			<b>53%</b>	<b>50%</b>		<b>62%</b>			<b>60%</b>		



	Jan	Feb	Mar	Apr	May	Jun	Jul	Aug	Sep	Oct	Nov	Dec
# Ferritin	57			59	6		58			60		
# Ferritin 800 to 1200	18			20	3		18			18		
Pop. Mean	787			767	656		686			685		
Std. Deviation	342			381	428		353			355		
<b>% Ferritin 800 to 1200</b>	<b>32%</b>			<b>34%</b>	<b>50%</b>		<b>31%</b>			<b>30%</b>		

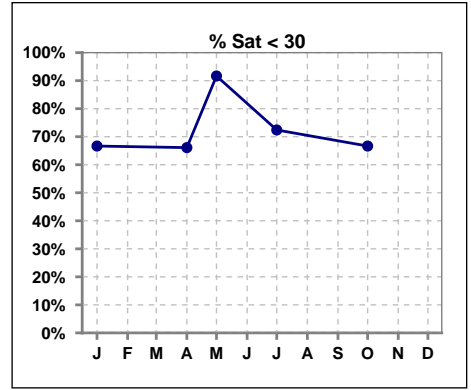


	Jan	Feb	Mar	Apr	May	Jun	Jul	Aug	Sep	Oct	Nov	Dec
# Ferritin	57			59	6		58			60		
# Ferritin > 1200	5			8			4			6		
Pop. Mean	787			767	656		686			685		
Std. Deviation	342			381	428		353			355		
<b>% Ferritin &gt; 1200</b>	<b>9%</b>			<b>14%</b>			<b>7%</b>			<b>10%</b>		

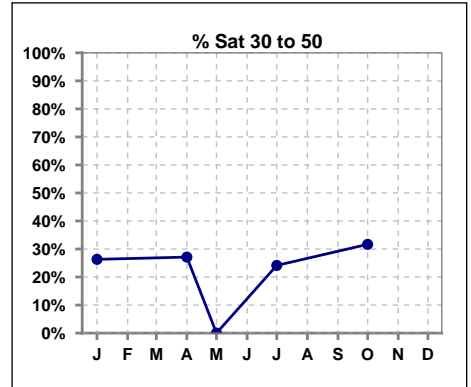


**V. ANEMIA - CONT.**

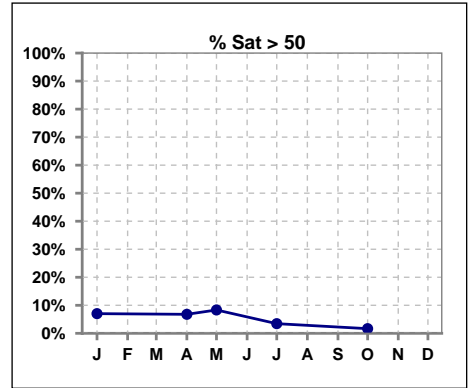
	Jan	Feb	Mar	Apr	May	Jun	Jul	Aug	Sep	Oct	Nov	Dec
# % Sat	57			59	12		58			60		
# % Sat < 30	38			39	11		42			40		
Pop. Mean	27			28	23		26			26		
Std. Deviation	12			13	10		10			10		
<b>% % Sat &lt; 30</b>	<b>67%</b>			<b>66%</b>	<b>92%</b>		<b>72%</b>			<b>67%</b>		



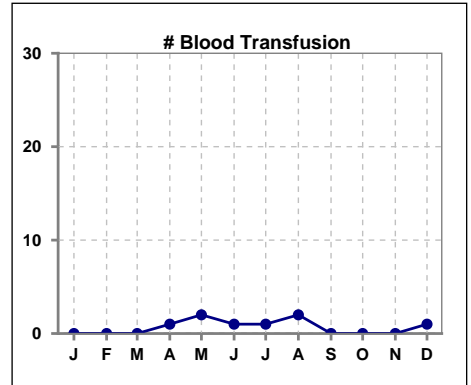
	Jan	Feb	Mar	Apr	May	Jun	Jul	Aug	Sep	Oct	Nov	Dec
# % Sat	57			59	12		58			60		
# % Sat 30 to 50	15			16	0		14			19		
Pop. Mean	27			28	23		26			26		
Std. Deviation	12			13	10		10			10		
<b>% % Sat 30 to 50</b>	<b>26%</b>			<b>27%</b>	<b>0%</b>		<b>24%</b>			<b>32%</b>		



	Jan	Feb	Mar	Apr	May	Jun	Jul	Aug	Sep	Oct	Nov	Dec
# % Sat	57			59	12		58			60		
# % Sat > 50	4			4	1		2			1		
Pop. Mean	27			28	23		26			26		
Std. Deviation	12			13	10		10			10		
<b>% % Sat &gt; 50</b>	<b>7%</b>			<b>7%</b>	<b>8%</b>		<b>3%</b>			<b>2%</b>		



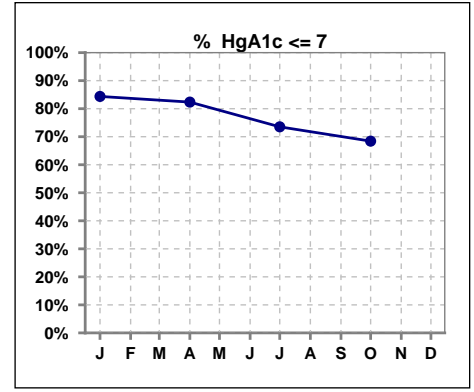
	Jan	Feb	Mar	Apr	May	Jun	Jul	Aug	Sep	Oct	Nov	Dec
# Patient	58	57	58	59	58	58	58	58	58	60	59	62
# Blood Transfusion	0	0	0	1	2	1	1	2	0	0	0	1



Methodology: a) All labs for 'Adequacy of Dialysis', 'Nutrition', 'Osteodystrophy', 'Anemia' and 'Diabetes' based on last value of month; b) BP's and #L processed are average of all values for month; c) Access data takes last access of month; d) Values for SGA and 'Infection Control' use most recent result.

**VI. Diabetes**

	Jan	Feb	Mar	Apr	May	Jun	Jul	Aug	Sep	Oct	Nov	Dec
# HgA1c	32			34			34			38		
# HgA1c <= 7	27			28			25			26		
Pop. Mean	6.2			6.1			6.4			6.5		
Std. Deviation	1.02			0.89			1.10			1.22		
<b>% HgA1c &lt;= 7</b>	<b>84%</b>			<b>82%</b>			<b>74%</b>			<b>68%</b>		

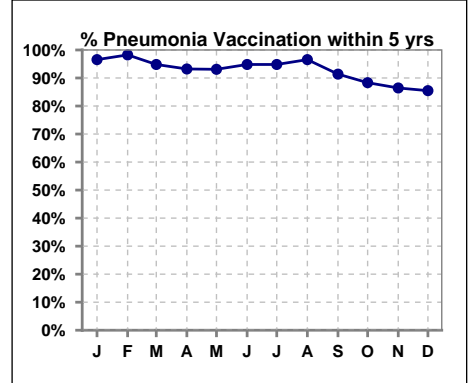


Methodology: a) All labs for 'Adequacy of Dialysis', 'Nutrition', 'Osteodystrophy', 'Anemia' and 'Diabetes' based on last value of month; b) BP's and #L processed are average of all values for month; c) Access data takes last access of month; d) Values for SGA and 'Infection Control' use most recent result.

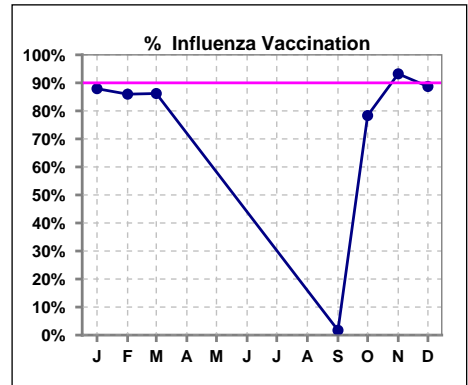
**VII. Infection Control**

**Pneumonia vaccination within the past five years**

	Jan	Feb	Mar	Apr	May	Jun	Jul	Aug	Sep	Oct	Nov	Dec
<b># Patient</b>	58	57	58	59	58	58	58	58	58	60	59	62
<b># Pneumonia</b>	56	56	55	55	54	55	55	56	53	53	51	53
<b>% Pneumonia</b>	97%	98%	95%	93%	93%	95%	95%	97%	91%	88%	86%	85%



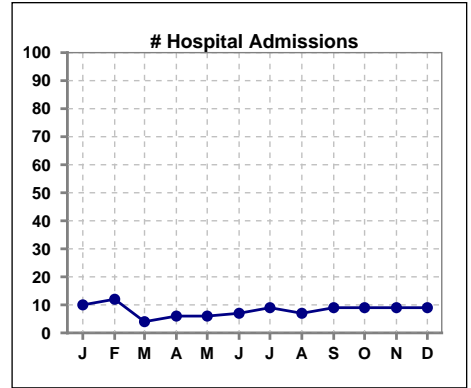
	Jan	Feb	Mar	Apr	May	Jun	Jul	Aug	Sep	Oct	Nov	Dec
<b># Patient</b>	58	57	58						58	60	59	62
<b># Influenza</b>	51	49	50						1	47	55	55
<b>% Influenza</b>	88%	86%	86%						2%	78%	93%	89%



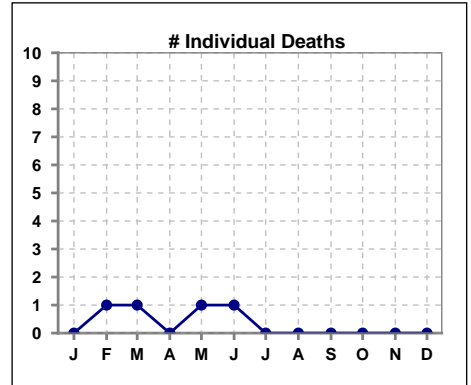
Methodology: a) All labs for 'Adequacy of Dialysis', 'Nutrition', 'Osteodystrophy', 'Anemia' and 'Diabetes' based on last value of month; b) BP's and #L processed are average of all values for month; c) Access data takes last access of month; d) Values for SGA and 'Infection Control' use most recent result.

**VIII. Outcome measures**

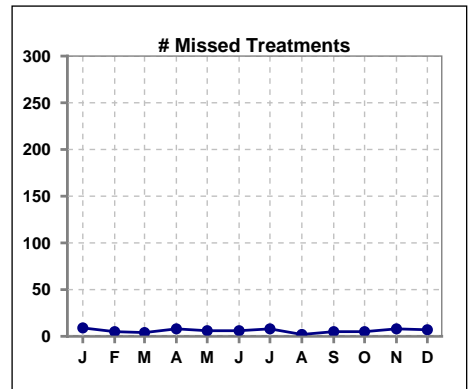
	Jan	Feb	Mar	Apr	May	Jun	Jul	Aug	Sep	Oct	Nov	Dec
<b># Patient</b>	58	57	58	59	58	58	58	58	58	60	59	62
<b># Hospital Admissions</b>	10	12	4	6	6	7	9	7	9	9	9	9



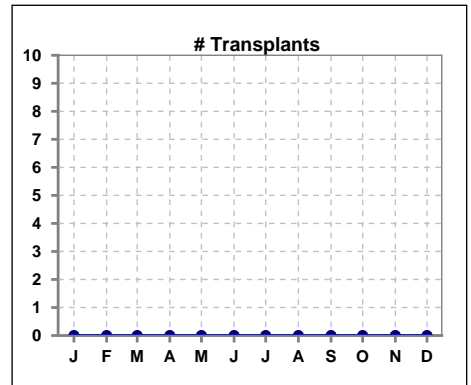
	Jan	Feb	Mar	Apr	May	Jun	Jul	Aug	Sep	Oct	Nov	Dec
<b># Patient</b>	58	57	58	59	58	58	58	58	58	60	59	62
<b># Individual Deaths</b>	0	1	1	0	1	1	0	0	0	0	0	0



	Jan	Feb	Mar	Apr	May	Jun	Jul	Aug	Sep	Oct	Nov	Dec
<b># Patient</b>	58	57	58	59	58	58	58	58	58	60	59	62
<b># Missed Treatments</b>	9	5	4	8	6	6	8	2	5	5	8	7



	Jan	Feb	Mar	Apr	May	Jun	Jul	Aug	Sep	Oct	Nov	Dec
<b># Patient</b>	58	57	58	59	58	58	58	58	58	60	59	62
<b># Transplants</b>	0	0	0	0	0	0	0	0	0	0	0	0



Methodology: a) All labs for 'Adequacy of Dialysis', 'Nutrition', 'Osteodystrophy', 'Anemia' and 'Diabetes' based on last value of month; b) BP's and #L processed are average of all values for month; c) Access data takes last access of month; d) Values for SGA and 'Infection Control' use most recent result.