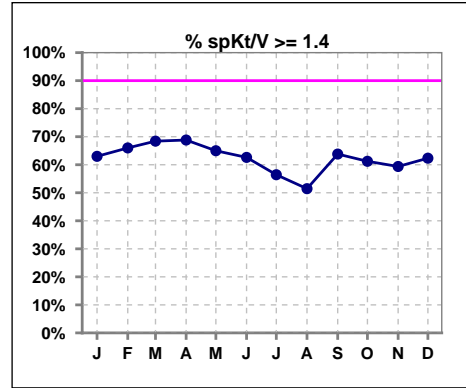
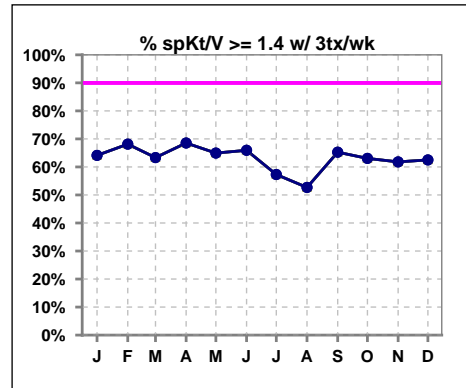


I. ADEQUACY OF DIALYSIS

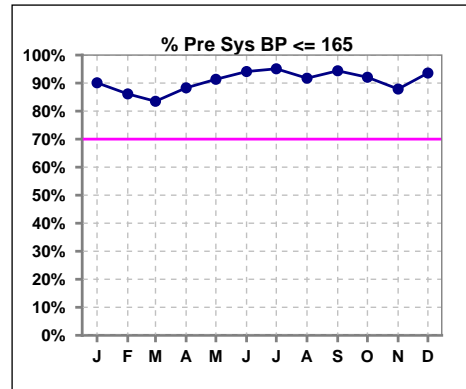
	Jan	Feb	Mar	Apr	May	Jun	Jul	Aug	Sep	Oct	Nov	Dec
# spKt/V	100	100	95	93	100	99	101	103	105	98	96	77
# spKt/V >= 1.4	63	66	65	64	65	62	57	53	67	60	57	48
Pop. Mean	1.56	1.59	1.54	1.56	1.54	1.49	1.47	1.48	1.51	1.50	1.48	1.49
Std. Deviation	0.38	0.34	0.43	0.32	0.36	0.39	0.40	0.40	0.47	0.35	0.46	0.40
% spKt/V >= 1.4	63%	66%	68%	69%	65%	63%	56%	51%	64%	61%	59%	62%
% spKt/V >= 1.2	88%	91%	91%	92%	90%	84%	78%	83%	82%	85%	76%	83%



	Jan	Feb	Mar	Apr	May	Jun	Jul	Aug	Sep	Oct	Nov	Dec
# spKt/V w/ 3tx/wk	92	91	90	89	97	91	89	93	95	92	89	72
# spKt/V >= 1.4 w/3tx/wk	59	62	57	61	63	60	51	49	62	58	55	45
Pop. Mean	1.57	1.60	1.53	1.57	1.54	1.52	1.48	1.49	1.54	1.51	1.51	1.51
Std. Deviation	0.38	0.35	0.44	0.32	0.36	0.38	0.40	0.41	0.46	0.35	0.45	0.39
% spKt/V >= 1.4 w/3tx/wk	64%	68%	63%	69%	65%	66%	57%	53%	65%	63%	62%	63%



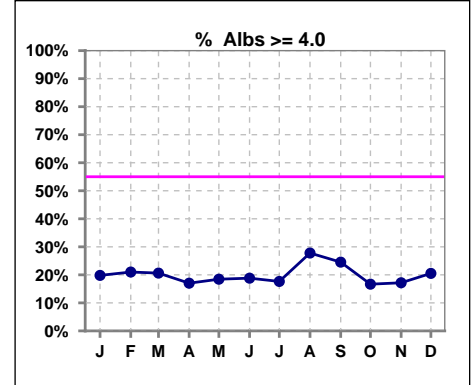
	Jan	Feb	Mar	Apr	May	Jun	Jul	Aug	Sep	Oct	Nov	Dec
# Pre Sys BP	101	101	97	94	104	102	102	109	107	101	99	78
# Pre Sys BP <= 165	91	88	83	85	95	97	99	101	101	93	88	73
Pop. Mean	143	144	146	140	140	137	139	141	141	139	142	142
Std. Deviation	19.2	20.1	18.6	18.4	17.6	18.9	15.1	18.2	17.0	17.0	18.0	15.9
% Pre Sys BP <= 165	90%	86%	84%	88%	91%	94%	95%	92%	94%	92%	88%	94%



*Albumin values use BCG method - as of July 2001

II. NUTRITION

	Jan	Feb	Mar	Apr	May	Jun	Jul	Aug	Sep	Oct	Nov	Dec
# Albumin	101	100	97	94	103	101	102	108	106	102	99	78
# Albumin >= 4.0	20	21	20	16	19	19	18	30	26	17	17	16
Pop. Mean	3.5	3.5	3.6	3.5	3.5	3.5	3.5	3.6	3.6	3.5	3.5	3.6
Std. Deviation	0.49	0.49	0.46	0.44	0.49	0.49	0.46	0.47	0.44	0.48	0.55	0.48
% Alb >= 4.0	20%	21%	21%	17%	18%	19%	18%	28%	25%	17%	17%	21%

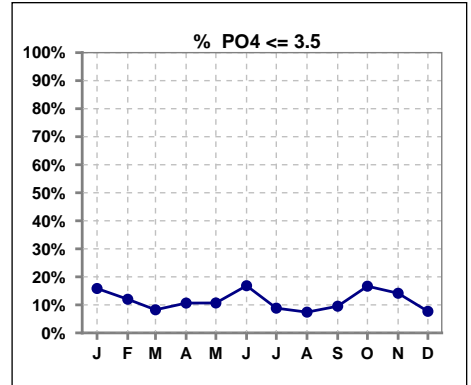


Methodology: a) All labs for 'Adequacy of Dialysis', 'Nutrition', 'Osteodystrophy', 'Anemia' and 'Diabetes' based on last value of month; b) BP's and #L processed are average of all values for month; c) Access data takes last access of month; d) Values for SGA and 'Infection Control' use most recent result.

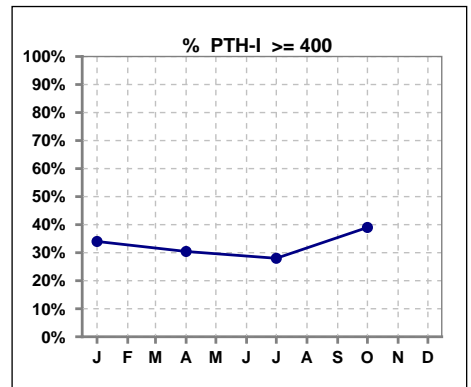
Lab methodology for PTH changed January 2012

III. OSTEODYSTROPHY

	Jan	Feb	Mar	Apr	May	Jun	Jul	Aug	Sep	Oct	Nov	Dec
# PO4	101	100	97	94	103	101	102	108	105	102	99	78
# PO4 <= 3.5	16	12	8	10	11	17	9	8	10	17	14	6
Pop. Mean	5.2	5.4	5.5	5.5	5.5	5.5	5.5	5.6	5.7	5.4	5.6	5.7
Std. Deviation	1.84	1.97	1.59	2.24	1.89	2.02	1.69	1.86	1.77	1.83	1.96	1.78
% PO4 <= 3.5	16%	12%	8%	11%	11%	17%	9%	7%	10%	17%	14%	8%



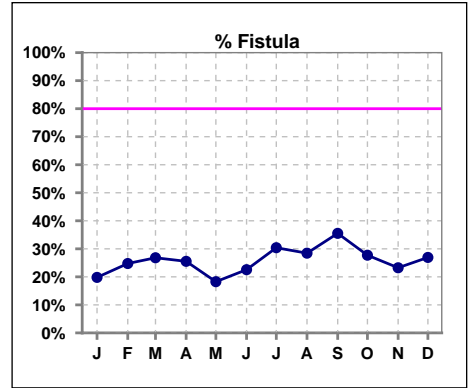
	Jan	Feb	Mar	Apr	May	Jun	Jul	Aug	Sep	Oct	Nov	Dec
# PTH-I	100			92			100			100		
# PTH-I >= 400	34			28			28			39		
Pop. Mean	348			363			338			449		
Std. Deviation	289			343			274			429		
% PTH-I >= 400	34%			30%			28%			39%		



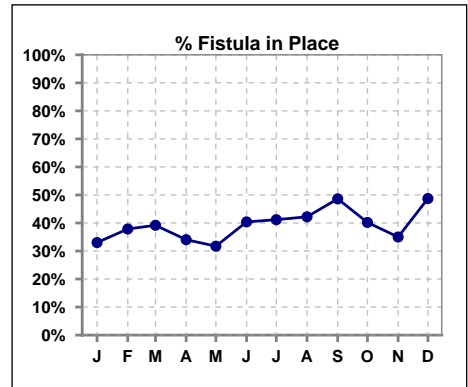
Methodology: a) All labs for 'Adequacy of Dialysis', 'Nutrition', 'Osteodystrophy', 'Anemia' and 'Diabetes' based on last value of month; b) BP's and #L processed are average of all values for month; c) Access data takes last access of month; d) Values for SGA and 'Infection Control' use most recent result.

IV. ACCESS

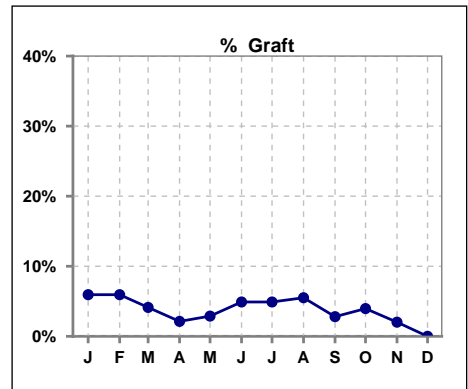
	Jan	Feb	Mar	Apr	May	Jun	Jul	Aug	Sep	Oct	Nov	Dec
# Access	101	101	97	94	104	102	102	109	107	101	99	78
# Fistula	20	25	26	24	19	23	31	31	38	28	23	21
% Fistula	20%	25%	27%	26%	18%	23%	30%	28%	36%	28%	23%	27%



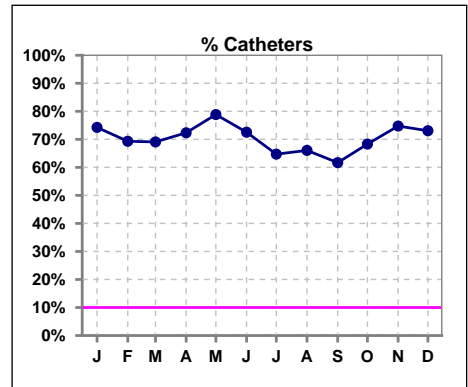
	Jan	Feb	Mar	Apr	May	Jun	Jul	Aug	Sep	Oct	Nov	Dec
# Patient	103	103	97	94	104	104	102	109	109	102	100	78
# Fistula in Place	34	39	38	32	33	42	42	46	53	41	35	38
% Fistula in Place	33%	38%	39%	34%	32%	40%	41%	42%	49%	40%	35%	49%



	Jan	Feb	Mar	Apr	May	Jun	Jul	Aug	Sep	Oct	Nov	Dec
# Access	101	101	97	94	104	102	102	109	107	101	99	78
# Graft	6	6	4	2	3	5	5	6	3	4	2	0
% Graft	6%	6%	4%	2%	3%	5%	5%	6%	3%	4%	2%	0%



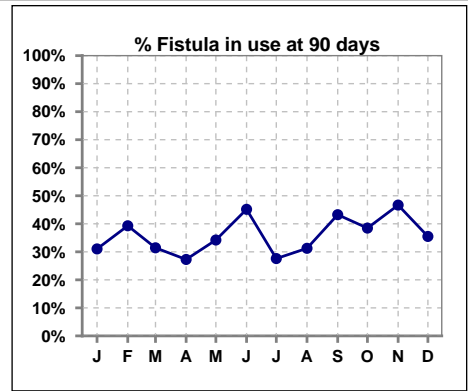
	Jan	Feb	Mar	Apr	May	Jun	Jul	Aug	Sep	Oct	Nov	Dec
# Access	101	101	97	94	104	102	102	109	107	101	99	78
# Catheters	75	70	67	68	82	74	66	72	66	69	74	57
% Catheters	74%	69%	69%	72%	79%	73%	65%	66%	62%	68%	75%	73%



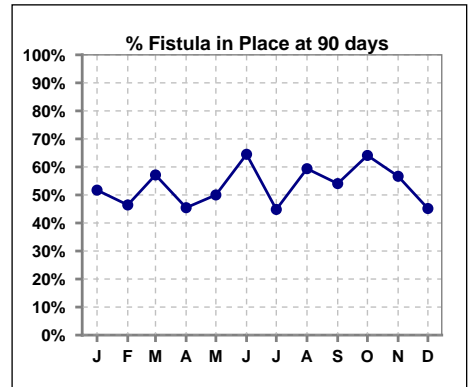
Methodology: a) All labs for 'Adequacy of Dialysis', 'Nutrition', 'Osteodystrophy', 'Anemia' and 'Diabetes' based on last value of month; b) BP's and #L processed are average of all values for month; c) Access data takes last access of month; d) Values for SGA and 'Infection Control' use most recent result.

IV. ACCESS - CONT. Access at 90 days for those patients that reached 90 days within the month.

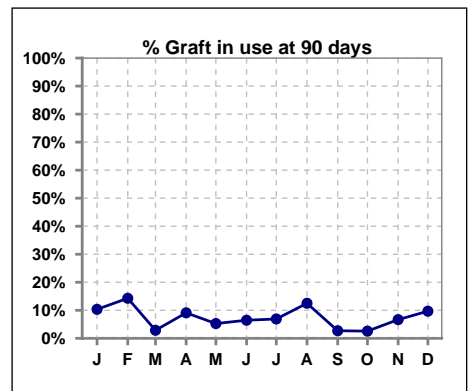
	Jan	Feb	Mar	Apr	May	Jun	Jul	Aug	Sep	Oct	Nov	Dec
# Patient	29	28	35	33	38	31	29	32	37	39	30	31
# Fistula in use	9	11	11	9	13	14	8	10	16	15	14	11
% Fistula in use	31%	39%	31%	27%	34%	45%	28%	31%	43%	38%	47%	35%



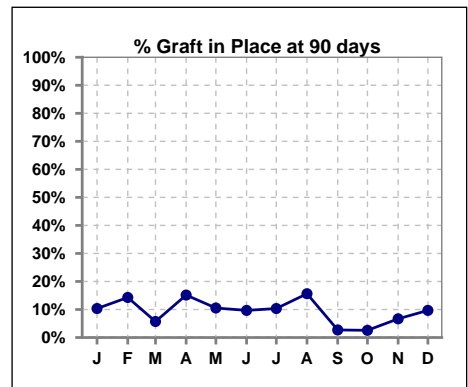
	Jan	Feb	Mar	Apr	May	Jun	Jul	Aug	Sep	Oct	Nov	Dec
# Patient	29	28	35	33	38	31	29	32	37	39	30	31
# Fistula in Place	15	13	20	15	19	20	13	19	20	25	17	14
% Fistula in Place	52%	46%	57%	45%	50%	65%	45%	59%	54%	64%	57%	45%



	Jan	Feb	Mar	Apr	May	Jun	Jul	Aug	Sep	Oct	Nov	Dec
# Patient	29	28	35	33	38	31	29	32	37	39	30	31
# Graft in use	3	4	1	3	2	2	2	4	1	1	2	3
% Graft in use	10%	14%	3%	9%	5%	6%	7%	13%	3%	3%	7%	10%



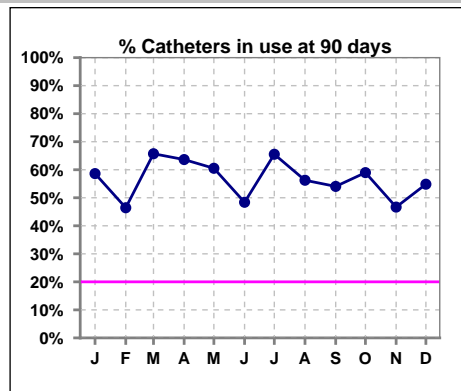
	Jan	Feb	Mar	Apr	May	Jun	Jul	Aug	Sep	Oct	Nov	Dec
# Patient	29	28	35	33	38	31	29	32	37	39	30	31
# Graft in Place	3	4	2	5	4	3	3	5	1	1	2	3
% Graft in Place	10%	14%	6%	15%	11%	10%	10%	16%	3%	3%	7%	10%



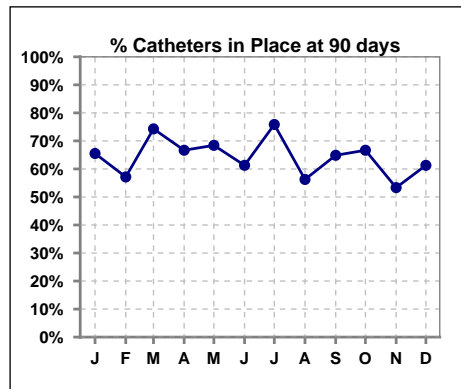
Methodology: a) All labs for 'Adequacy of Dialysis', 'Nutrition', 'Osteodystrophy', 'Anemia' and 'Diabetes' based on last value of month; b) BP's and #L processed are average of all values for month; c) Access data takes last access of month; d) Values for SGA and 'Infection Control' use most recent result.

IV. ACCESS - CONT. Access at 90 days for those patients that reached 90 days within the month.

	Jan	Feb	Mar	Apr	May	Jun	Jul	Aug	Sep	Oct	Nov	Dec
# Patient	29	28	35	33	38	31	29	32	37	39	30	31
# Catheters in use	17	13	23	21	23	15	19	18	20	23	14	17
% Catheters in use	59%	46%	66%	64%	61%	48%	66%	56%	54%	59%	47%	55%



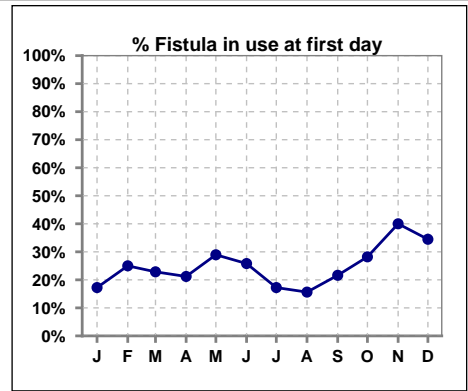
	Jan	Feb	Mar	Apr	May	Jun	Jul	Aug	Sep	Oct	Nov	Dec
# Patient	29	28	35	33	38	31	29	32	37	39	30	31
# Catheters in Place	19	16	26	22	26	19	22	18	24	26	16	19
% Catheters in Place	66%	57%	74%	67%	68%	61%	76%	56%	65%	67%	53%	61%



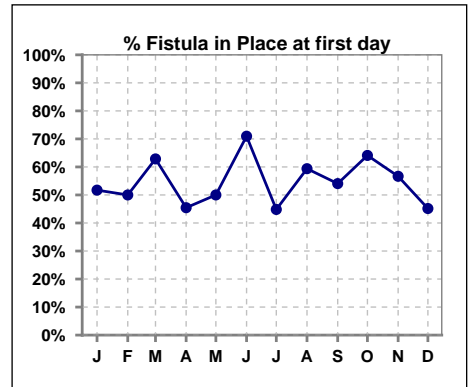
Methodology: a) All labs for 'Adequacy of Dialysis', 'Nutrition', 'Osteodystrophy', 'Anemia' and 'Diabetes' based on last value of month; b) BP's and #L processed are average of all values for month; c) Access data takes last access of month; d) Values for SGA and 'Infection Control' use most recent result.

IV. ACCESS - CONT. Access at first day for those patients that reached 90 days within the month.

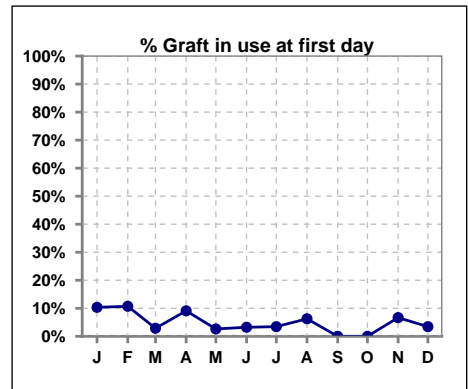
	Jan	Feb	Mar	Apr	May	Jun	Jul	Aug	Sep	Oct	Nov	Dec
# Patient	29	28	35	33	38	31	29	32	37	39	30	29
# Fistula in use	5	7	8	7	11	8	5	5	8	11	12	10
% Fistula in use	17%	25%	23%	21%	29%	26%	17%	16%	22%	28%	40%	34%



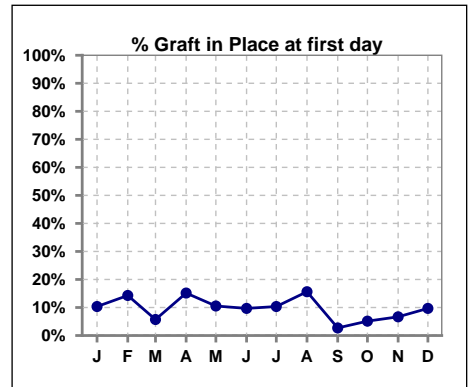
	Jan	Feb	Mar	Apr	May	Jun	Jul	Aug	Sep	Oct	Nov	Dec
# Patient	29	28	35	33	38	31	29	32	37	39	30	31
# Fistula in Place	15	14	22	15	19	22	13	19	20	25	17	14
% Fistula in Place	52%	50%	63%	45%	50%	71%	45%	59%	54%	64%	57%	45%



	Jan	Feb	Mar	Apr	May	Jun	Jul	Aug	Sep	Oct	Nov	Dec
# Patient	29	28	35	33	38	31	29	32	37	39	30	29
# Graft in use	3	3	1	3	1	1	1	2	0	0	2	1
% Graft in use	10%	11%	3%	9%	3%	3%	3%	6%	0%	0%	7%	3%



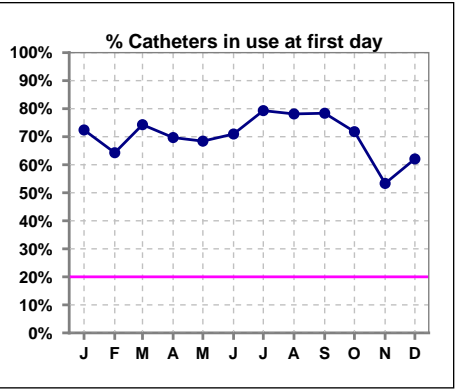
	Jan	Feb	Mar	Apr	May	Jun	Jul	Aug	Sep	Oct	Nov	Dec
# Patient	29	28	35	33	38	31	29	32	37	39	30	31
# Graft in Place	3	4	2	5	4	3	3	5	1	2	2	3
% Graft in Place	10%	14%	6%	15%	11%	10%	10%	16%	3%	5%	7%	10%



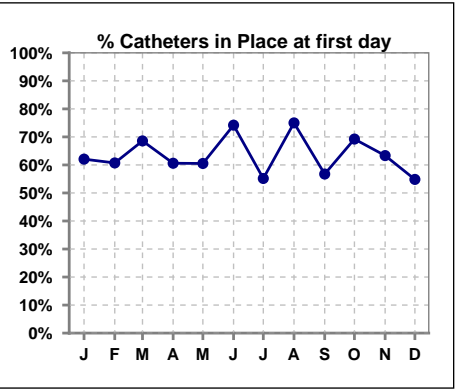
Methodology: a) All labs for 'Adequacy of Dialysis', 'Nutrition', 'Osteodystrophy', 'Anemia' and 'Diabetes' based on last value of month; b) BP's and #L processed are average of all values for month; c) Access data takes last access of month; d) Values for SGA and 'Infection Control' use most recent result.

IV. ACCESS - CONT. Access at first day for those patients that reached 90 days within the month.

	Jan	Feb	Mar	Apr	May	Jun	Jul	Aug	Sep	Oct	Nov	Dec
# Patient	29	28	35	33	38	31	29	32	37	39	30	29
# Catheters in use	21	18	26	23	26	22	23	25	29	28	16	18
% Catheters in use	72%	64%	74%	70%	68%	71%	79%	78%	78%	72%	53%	62%



	Jan	Feb	Mar	Apr	May	Jun	Jul	Aug	Sep	Oct	Nov	Dec
# Patient	29	28	35	33	38	31	29	32	37	39	30	31
# Catheters in Place	18	17	24	20	23	23	16	24	21	27	19	17
% Catheters in Place	62%	61%	69%	61%	61%	74%	55%	75%	57%	69%	63%	55%

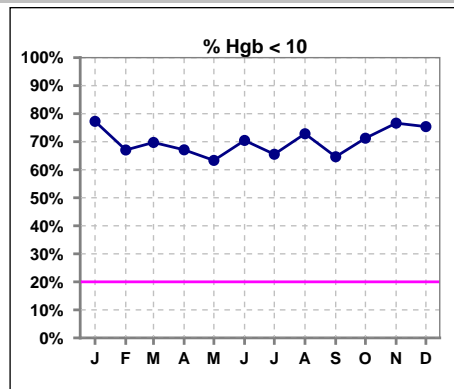


Methodology: a) All labs for 'Adequacy of Dialysis', 'Nutrition', 'Osteodystrophy', 'Anemia' and 'Diabetes' based on last value of month; b) BP's and #L processed are average of all values for month; c) Access data takes last access of month; d) Values for SGA and 'Infection Control' use most recent result.

V. ANEMIA

	Jan	Feb	Mar	Apr	May	Jun	Jul	Aug	Sep	Oct	Nov	Dec
# Hgb	88	88	76	76	90	88	87	81	82	80	77	65
# Hgb <= 10	68	59	53	51	57	62	57	59	53	57	59	49
Pop. Mean	9.2	9.4	9.4	9.5	9.5	9.3	9.6	9.3	9.5	9.3	9.0	9.2
Std. Deviation	1.6	1.4	1.4	1.3	1.5	1.3	1.4	1.3	1.6	1.6	1.4	1.2
% Hgb <= 10	77%	67%	70%	67%	63%	70%	66%	73%	65%	71%	77%	75%

Note: Excludes patients who received no ESA in month.



	Jan	Feb	Mar	Apr	May	Jun	Jul	Aug	Sep	Oct	Nov	Dec
# Hgb	88	88	76	76	90	88	87	81	82	80	77	65
# Hgb >= 12	7	2	3	2	4	3	4	2	5	4	1	0
Pop. Mean	9.2	9.4	9.4	9.5	9.5	9.3	9.6	9.3	9.5	9.3	9.0	9.2
Std. Deviation	1.6	1.4	1.4	1.3	1.5	1.3	1.4	1.3	1.6	1.6	1.4	1.2
% Hgb >= 12	8%	2%	4%	3%	4%	3%	5%	2%	6%	5%	1%	0%

Note: Excludes patients who received no ESA in month.

