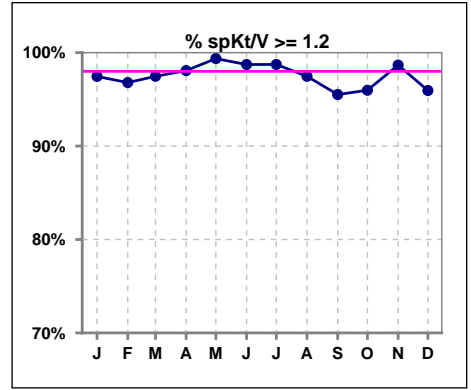
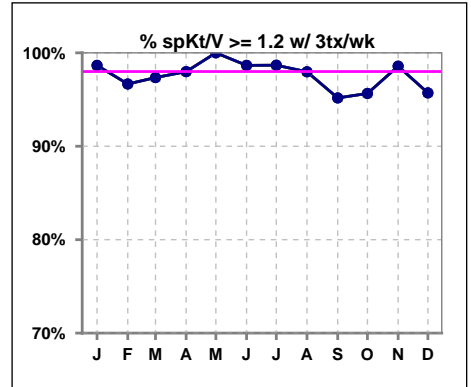


**I. ADEQUACY OF DIALYSIS**

	Jan	Feb	Mar	Apr	May	Jun	Jul	Aug	Sep	Oct	Nov	Dec
# spKt/V	157	156	158	156	157	157	158	158	156	149	150	148
# spKt/V >= 1.2	153	151	154	153	156	155	156	154	149	143	148	142
Pop. Mean	1.67	1.70	1.67	1.66	1.66	1.68	1.66	1.67	1.68	1.64	1.67	1.64
Std. Deviation	0.31	0.43	0.32	0.33	0.32	0.30	0.31	0.31	0.35	0.32	0.31	0.36
% spKt/V >= 1.2	97%	97%	97%	98%	99%	99%	99%	97%	96%	96%	99%	96%

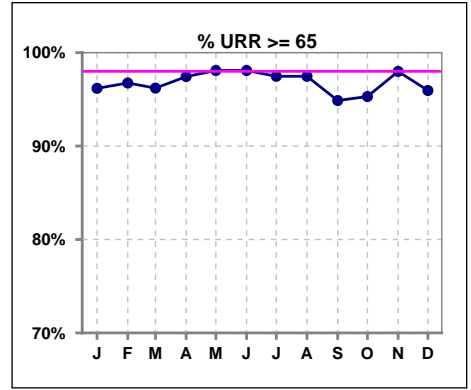


	Jan	Feb	Mar	Apr	May	Jun	Jul	Aug	Sep	Oct	Nov	Dec
# spKt/V w/ 3tx/wk	149	150	151	149	146	149	151	148	145	138	140	140
# spKt/V >= 1.2 w/3tx/wk	147	145	147	146	146	147	149	145	138	132	138	134
Pop. Mean	1.68	1.70	1.67	1.67	1.67	1.69	1.66	1.67	1.67	1.64	1.67	1.64
Std. Deviation	0.30	0.43	0.32	0.33	0.30	0.30	0.31	0.30	0.32	0.32	0.30	0.36
% >= 1.2 w/3tx/wk	99%	97%	97%	98%	100%	99%	99%	98%	95%	96%	99%	96%

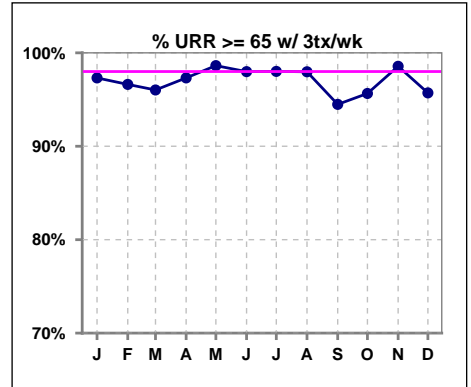


**I. ADEQUACY OF DIALYSIS - CONT.**

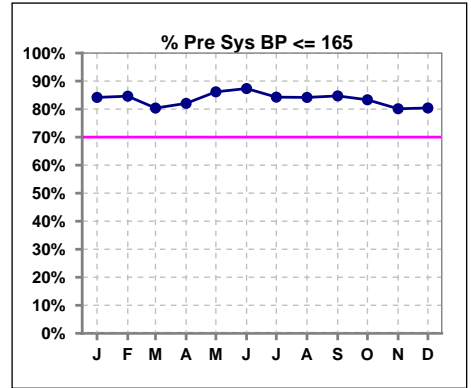
	Jan	Feb	Mar	Apr	May	Jun	Jul	Aug	Sep	Oct	Nov	Dec
# URR	157	154	158	156	157	157	158	158	156	149	149	148
# URR >= 65	151	149	152	152	154	154	154	154	148	142	146	142
Pop. Mean	76	76	75	75	75	76	75	76	76	75	76	75
Std. Deviation	6.25	6.74	6.34	6.40	6.54	5.58	6.01	6.04	6.64	6.67	5.92	7.35
% URR >= 65	96%	97%	96%	97%	98%	98%	97%	97%	95%	95%	98%	96%



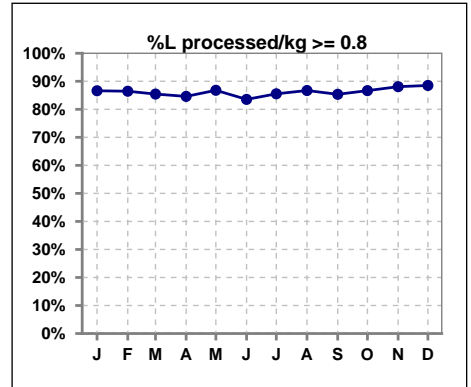
	Jan	Feb	Mar	Apr	May	Jun	Jul	Aug	Sep	Oct	Nov	Dec
# URR w/ 3tx/wk	149	148	151	149	146	149	151	148	145	138	139	140
# URR>=65 w/ 3tx/wk	145	143	145	145	144	146	148	145	137	132	137	134
Pop. Mean	76	76	75	75	76	76	75	76	76	75	76	75
Std. Deviation	5.97	6.72	6.31	6.44	5.87	5.54	5.98	5.89	6.46	6.67	5.79	7.39
% URR>=65 w/ 3tx/wk	97%	97%	96%	97%	99%	98%	98%	98%	94%	96%	99%	96%



	Jan	Feb	Mar	Apr	May	Jun	Jul	Aug	Sep	Oct	Nov	Dec
# Pre Sys BP	158	156	158	156	159	158	159	158	157	150	151	148
# Pre Sys BP <= 165	134	132	129	132	139	140	139	135	137	128	122	121
Pop. Mean	145	147	147	146	146	146	146	145	145	147	147	146
Std. Deviation	20.3	19.8	19.4	17.9	17.8	17.9	17.7	18.7	18.0	18.4	19.2	19.4
% Pre Sys BP <=165	84%	85%	80%	82%	86%	87%	84%	84%	85%	83%	80%	80%



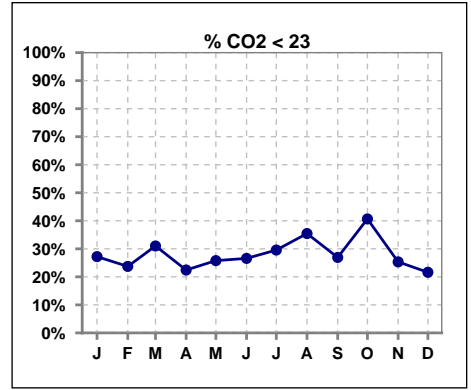
	Jan	Feb	Mar	Apr	May	Jun	Jul	Aug	Sep	Oct	Nov	Dec
# L processed/kg	157	155	158	156	159	158	159	158	157	150	151	148
# L processed/kg>=0.8	136	134	135	132	138	132	136	137	134	130	133	131
Pop. Mean	1	1	1	1	1	1	1	1	1	1	1	1
Std. Deviation	0.3	0.3	0.3	0.3	0.3	0.3	0.3	0.3	0.3	0.3	0.3	0.3
% L processed/kg>=0.8	87%	86%	85%	85%	87%	84%	86%	87%	85%	87%	88%	89%



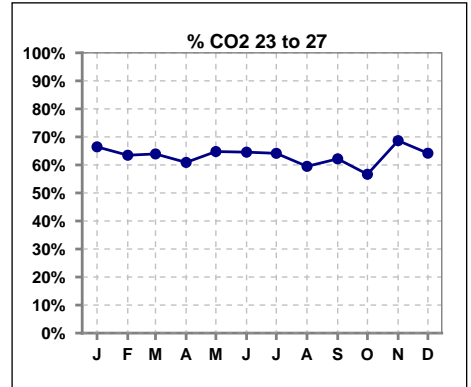
Methodology: a) All labs for 'Adequacy of Dialysis', 'Nutrition', 'Osteodystrophy', 'Anemia' and 'Diabetes' based on last value of month; b) BP's and #L processed are average of all values for month; c) Access data takes last access of month; d) Values for SGA and 'Infection Control' use most recent result.

**I. ADEQUACY OF DIALYSIS - CONT.**

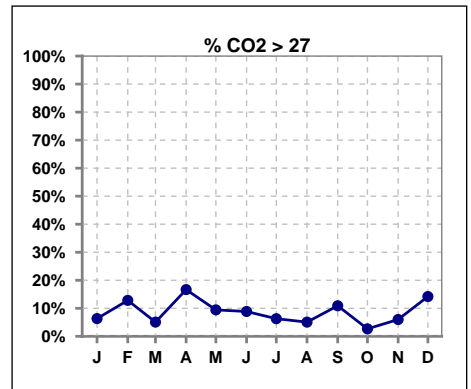
	Jan	Feb	Mar	Apr	May	Jun	Jul	Aug	Sep	Oct	Nov	Dec
# CO2	158	156	158	156	159	158	159	158	156	150	150	148
# CO2 < 23	43	37	49	35	41	42	47	56	42	61	38	32
Pop. Mean	24	24	23	25	24	24	23	23	24	23	24	25
Std. Deviation	2.68	3.06	2.80	3.10	2.82	3.03	2.83	2.95	2.98	2.59	2.47	2.94
<b>% CO2 &lt; 23</b>	<b>27%</b>	<b>24%</b>	<b>31%</b>	<b>22%</b>	<b>26%</b>	<b>27%</b>	<b>30%</b>	<b>35%</b>	<b>27%</b>	<b>41%</b>	<b>25%</b>	<b>22%</b>



	Jan	Feb	Mar	Apr	May	Jun	Jul	Aug	Sep	Oct	Nov	Dec
# CO2	158	156	158	156	159	158	159	158	156	150	150	148
# CO2 23 to 27	105	99	101	95	103	102	102	94	97	85	103	95
Pop. Mean	24	24	23	25	24	24	23	23	24	23	24	25
Std. Deviation	2.68	3.06	2.80	3.10	2.82	3.03	2.83	2.95	2.98	2.59	2.47	2.94
<b>% CO2 23 to 27</b>	<b>66%</b>	<b>63%</b>	<b>64%</b>	<b>61%</b>	<b>65%</b>	<b>65%</b>	<b>64%</b>	<b>59%</b>	<b>62%</b>	<b>57%</b>	<b>69%</b>	<b>64%</b>



	Jan	Feb	Mar	Apr	May	Jun	Jul	Aug	Sep	Oct	Nov	Dec
# CO2	158	156	158	156	159	158	159	158	156	150	150	148
# CO2 > 27	10	20	8	26	15	14	10	8	17	4	9	21
Pop. Mean	24	24	23	25	24	24	23	23	24	23	24	25
Std. Deviation	2.68	3.06	2.80	3.10	2.82	3.03	2.83	2.95	2.98	2.59	2.47	2.94
<b>% CO2 &gt; 27</b>	<b>6%</b>	<b>13%</b>	<b>5%</b>	<b>17%</b>	<b>9%</b>	<b>9%</b>	<b>6%</b>	<b>5%</b>	<b>11%</b>	<b>3%</b>	<b>6%</b>	<b>14%</b>

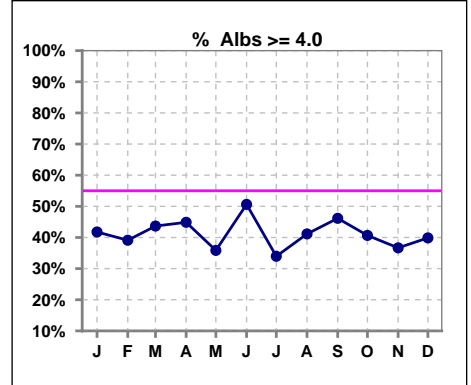


Methodology: a) All labs for 'Adequacy of Dialysis', 'Nutrition', 'Osteodystrophy', 'Anemia' and 'Diabetes' based on last value of month; b) BP's and #L processed are average of all values for month; c) Access data takes last access of month; d) Values for SGA and 'Infection Control' use most recent result.

\*Albumin values use BCG method - as of July 2001

**II. NUTRITION**

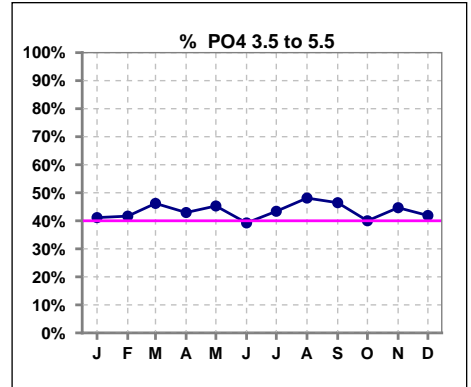
	Jan	Feb	Mar	Apr	May	Jun	Jul	Aug	Sep	Oct	Nov	Dec
# Albumin	158	156	158	156	159	158	159	158	156	150	150	148
# Albumin >= 4.0	66	61	69	70	57	80	54	65	72	61	55	59
Pop. Mean	3.8	3.8	3.8	3.9	3.8	3.9	3.8	3.9	3.9	3.8	3.8	3.8
Std. Deviation	0.40	0.37	0.40	0.38	0.36	0.39	0.34	0.37	0.43	0.38	0.43	0.40
% Alb >= 4.0	42%	39%	44%	45%	36%	51%	34%	41%	46%	41%	37%	40%



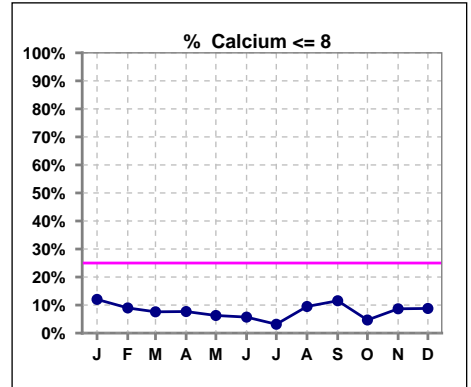
Lab methodology for PTH changed January 2012

**III. OSTEODYSTROPHY**

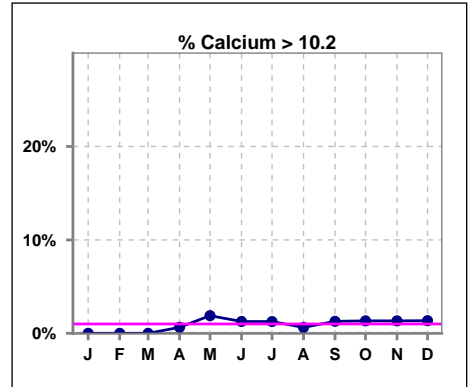
	Jan	Feb	Mar	Apr	May	Jun	Jul	Aug	Sep	Oct	Nov	Dec
# PO4	158	156	158	156	159	158	159	158	155	150	150	148
# PO4 3.5 to 5.5	65	65	73	67	72	62	69	76	72	60	67	62
Pop. Mean	5.8	5.8	5.8	5.7	5.9	6.0	6.0	6.0	5.8	5.8	5.7	5.8
Std. Deviation	1.79	1.82	1.98	1.93	1.81	1.93	2.01	1.95	1.88	1.83	1.77	1.74
% PO4 3.5 to 5.5	41%	42%	46%	43%	45%	39%	43%	48%	46%	40%	45%	42%



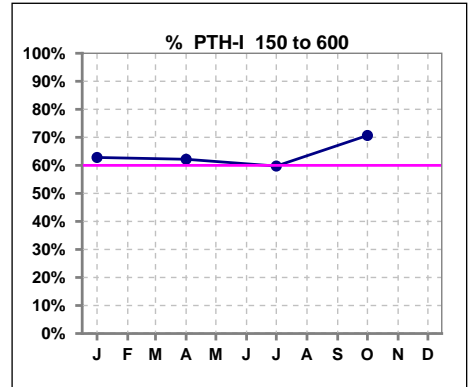
	Jan	Feb	Mar	Apr	May	Jun	Jul	Aug	Sep	Oct	Nov	Dec
# Calcium	158	156	158	156	159	158	159	158	156	150	150	148
# Calcium <= 8	19	14	12	12	10	9	5	15	18	7	13	13
Pop. Mean	9.0	9.0	9.1	9.1	9.2	9.2	9.2	9.1	9.0	9.1	9.1	9.1
Std. Deviation	0.78	0.76	0.70	0.74	0.75	0.69	0.70	0.74	0.75	0.70	0.76	0.71
% Calcium <= 8	12%	9%	8%	8%	6%	6%	3%	9%	12%	5%	9%	9%



	Jan	Feb	Mar	Apr	May	Jun	Jul	Aug	Sep	Oct	Nov	Dec
# Calcium	158	156	158	156	159	158	159	158	156	150	150	148
# Calcium > 10.2	0	0	0	1	3	2	2	1	2	2	2	2
Pop. Mean	9.0	9.0	9.1	9.1	9.2	9.2	9.2	9.1	9.0	9.1	9.1	9.1
Std. Deviation	0.78	0.76	0.70	0.74	0.75	0.69	0.70	0.74	0.75	0.70	0.76	0.71
% Calcium > 10.2	0%	0%	0%	1%	2%	1%	1%	1%	1%	1%	1%	1%



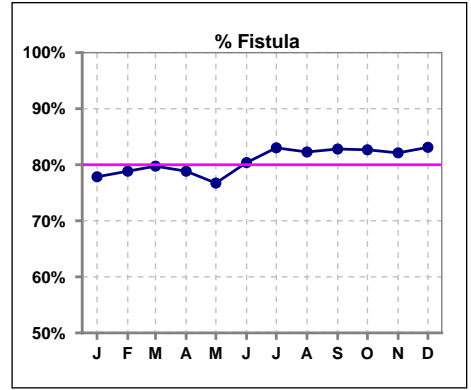
	Jan	Feb	Mar	Apr	May	Jun	Jul	Aug	Sep	Oct	Nov	Dec
# PTH-I	156			156			159			150		
# PTH-I 150 to 600	98			97			95			106		
Pop. Mean	427			375			362			440		
Std. Deviation	364			364			379			466		
% PTH-I 150 to 600	63%			62%			60%			71%		



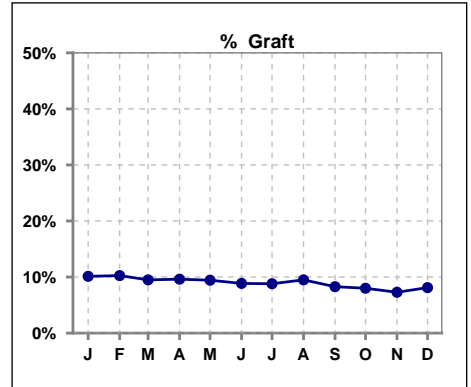
Methodology: a) All labs for 'Adequacy of Dialysis', 'Nutrition', 'Osteodystrophy', 'Anemia' and 'Diabetes' based on last value of month; b) BP's and #L processed are average of all values for month; c) Access data takes last access of month; d) Values for SGA and 'Infection Control' use most recent result.

**IV. ACCESS**

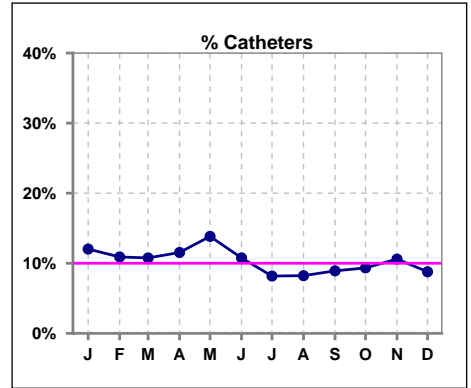
	Jan	Feb	Mar	Apr	May	Jun	Jul	Aug	Sep	Oct	Nov	Dec
<b># Access</b>	158	156	158	156	159	158	159	158	157	150	151	148
<b># Fistula</b>	123	123	126	123	122	127	132	130	130	124	124	123
<b>% Fistula</b>	78%	79%	80%	79%	77%	80%	83%	82%	83%	83%	82%	83%



	Jan	Feb	Mar	Apr	May	Jun	Jul	Aug	Sep	Oct	Nov	Dec
<b># Access</b>	158	156	158	156	159	158	159	158	157	150	151	148
<b># Graft</b>	16	16	15	15	15	14	14	15	13	12	11	12
<b>% Graft</b>	10%	10%	9%	10%	9%	9%	9%	9%	8%	8%	7%	8%



	Jan	Feb	Mar	Apr	May	Jun	Jul	Aug	Sep	Oct	Nov	Dec
<b># Access</b>	158	156	158	156	159	158	159	158	157	150	151	148
<b># Catheters</b>	19	17	17	18	22	17	13	13	14	14	16	13
<b>% Catheters</b>	12%	11%	11%	12%	14%	11%	8%	8%	9%	9%	11%	9%



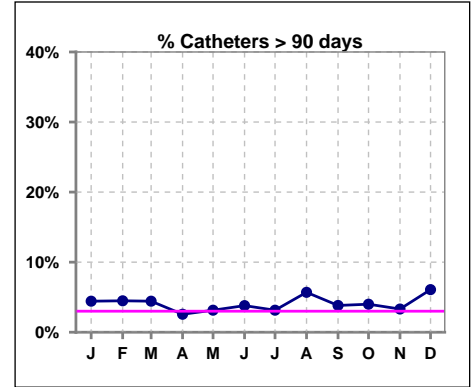
Methodology: a) All labs for 'Adequacy of Dialysis', 'Nutrition', 'Osteodystrophy', 'Anemia' and 'Diabetes' based on last value of month; b) BP's and #L processed are average of all values for month; c) Access data takes last access of month; d) Values for SGA and 'Infection Control' use most recent result.

**IV. ACCESS - CONT.**

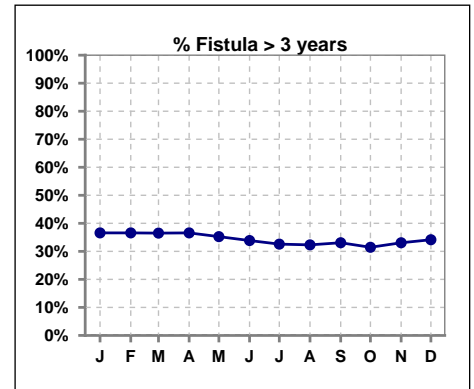
**Catheters > 90 days**

	Jan	Feb	Mar	Apr	May	Jun	Jul	Aug	Sep	Oct	Nov	Dec
<b># Access</b>	158	156	158	156	159	158	159	158	157	150	151	148
<b># Catheters</b>	7	7	7	4	5	6	5	9	6	6	5	9
<b>% Catheters</b>	4%	4%	4%	3%	3%	4%	3%	6%	4%	4%	3%	6%

**Definition:** Catheter in use on last treatment of the month



	Jan	Feb	Mar	Apr	May	Jun	Jul	Aug	Sep	Oct	Nov	Dec
<b># Fistula</b>	123	123	126	123	122	127	132	130	130	124	124	123
<b># Fistula &gt; 3 yrs</b>	45	45	46	45	43	43	43	42	43	39	41	42
<b>% Fistula &gt; 3 yrs</b>	37%	37%	37%	37%	35%	34%	33%	32%	33%	31%	33%	34%

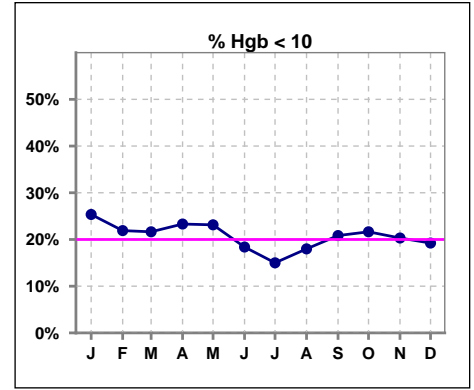


**Methodology:** a) All labs for 'Adequacy of Dialysis', 'Nutrition', 'Osteodystrophy', 'Anemia' and 'Diabetes' based on last value of month; b) BP's and #L processed are average of all values for month; c) Access data takes last access of month; d) Values for SGA and 'Infection Control' use most recent result.

**V. ANEMIA**

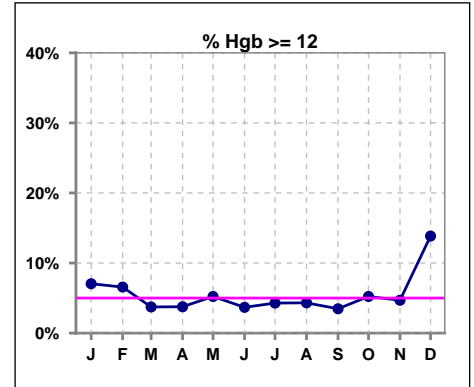
	Jan	Feb	Mar	Apr	May	Jun	Jul	Aug	Sep	Oct	Nov	Dec
# Hgb	142	137	134	133	134	136	140	139	144	134	128	130
# Hgb < 10	36	30	29	31	31	25	21	25	30	29	26	25
Pop. Mean	10.6	10.7	10.7	10.7	10.6	10.8	10.8	10.8	10.7	10.6	10.7	10.9
Std. Deviation	1.3	1.1	1.2	1.2	1.2	1.0	0.9	1.0	1.0	1.1	1.1	1.2
% Hgb < 10	25%	22%	22%	23%	23%	18%	15%	18%	21%	22%	20%	19%

Note: Excludes patients who received no ESA in month.



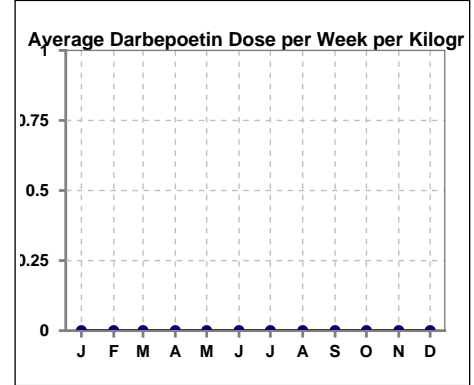
	Jan	Feb	Mar	Apr	May	Jun	Jul	Aug	Sep	Oct	Nov	Dec
# Hgb	142	137	134	133	134	136	140	139	144	134	128	130
# Hgb >= 12	10	9	5	5	7	5	6	6	5	7	6	18
Pop. Mean	10.6	10.7	10.7	10.7	10.6	10.8	10.8	10.8	10.7	10.6	10.7	10.9
Std. Deviation	1.3	1.1	1.2	1.2	1.2	1.0	0.9	1.0	1.0	1.1	1.1	1.2
% Hgb >= 12	7%	7%	4%	4%	5%	4%	4%	4%	3%	5%	5%	14%

Note: Excludes patients who received no ESA in month.



**Average Darbepoetin Dose per Week per Kilogram**

	Jan	Feb	Mar	Apr	May	Jun	Jul	Aug	Sep	Oct	Nov	Dec
# Average Darbepoetin	0	0	0	0	0	0	0	0	0	0	0	0

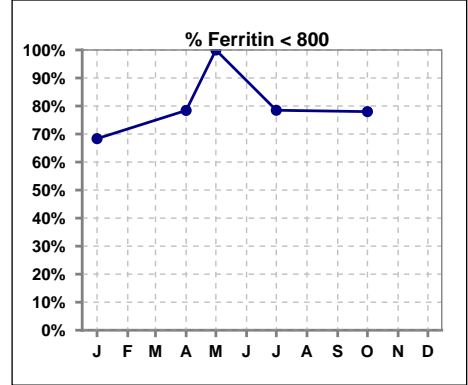




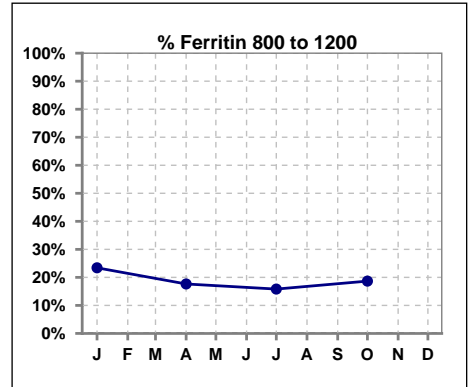
**V. ANEMIA - CONT.**

**Iron Profile**

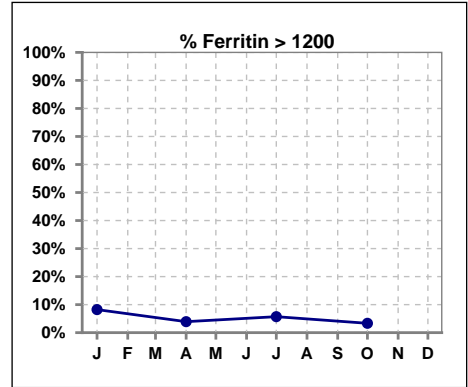
	Jan	Feb	Mar	Apr	May	Jun	Jul	Aug	Sep	Oct	Nov	Dec
# Ferritin	158			153	7		158			150		
# Ferritin < 800	108			120	7		124			117		
Pop. Mean	640			559	431		549			545		
Std. Deviation	390			342	208		392			331		
<b>% Ferritin &lt; 800</b>	<b>68%</b>			<b>78%</b>	<b>100%</b>		<b>78%</b>			<b>78%</b>		



	Jan	Feb	Mar	Apr	May	Jun	Jul	Aug	Sep	Oct	Nov	Dec
# Ferritin	158			153	7		158			150		
# Ferritin 800 to 1200	37			27			25			28		
Pop. Mean	640			559	431		549			545		
Std. Deviation	390			342	208		392			331		
<b>% Ferritin 800 to 1200</b>	<b>23%</b>			<b>18%</b>			<b>16%</b>			<b>19%</b>		

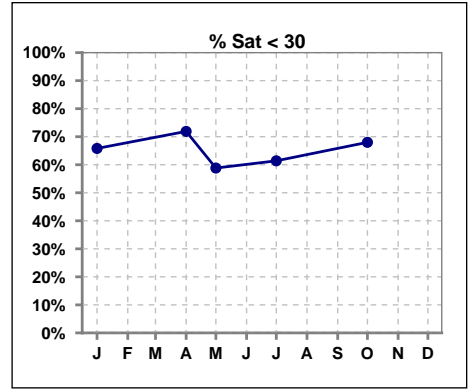


	Jan	Feb	Mar	Apr	May	Jun	Jul	Aug	Sep	Oct	Nov	Dec
# Ferritin	158			153	7		158			150		
# Ferritin > 1200	13			6			9			5		
Pop. Mean	640			559	431		549			545		
Std. Deviation	390			342	208		392			331		
<b>% Ferritin &gt; 1200</b>	<b>8%</b>			<b>4%</b>			<b>6%</b>			<b>3%</b>		

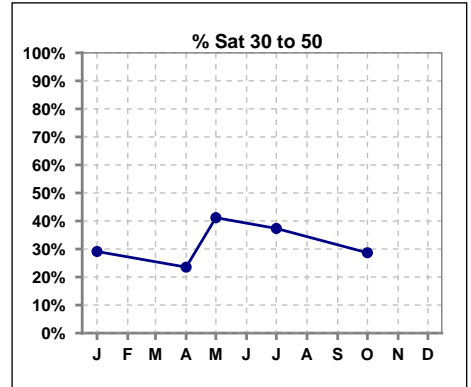


**V. ANEMIA - CONT.**

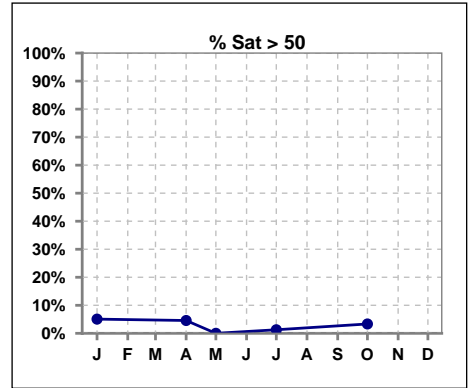
	Jan	Feb	Mar	Apr	May	Jun	Jul	Aug	Sep	Oct	Nov	Dec
# % Sat	158			153	17		158			150		
# % Sat < 30	104			110	10		97			102		
Pop. Mean	27			27	24		27			26		
Std. Deviation	13			14	11		10			12		
<b>% % Sat &lt; 30</b>	<b>66%</b>			<b>72%</b>	<b>59%</b>		<b>61%</b>			<b>68%</b>		



	Jan	Feb	Mar	Apr	May	Jun	Jul	Aug	Sep	Oct	Nov	Dec
# % Sat	158			153	17		158			150		
# % Sat 30 to 50	46			36	7		59			43		
Pop. Mean	27			27	24		27			26		
Std. Deviation	13			14	11		10			12		
<b>% % Sat 30 to 50</b>	<b>29%</b>			<b>24%</b>	<b>41%</b>		<b>37%</b>			<b>29%</b>		

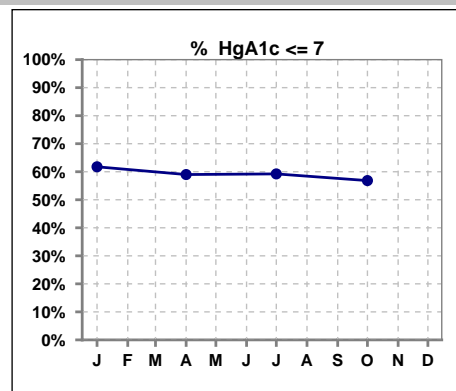


	Jan	Feb	Mar	Apr	May	Jun	Jul	Aug	Sep	Oct	Nov	Dec
# % Sat	158			153	17		158			150		
# % Sat > 50	8			7	0		2			5		
Pop. Mean	27			27	24		27			26		
Std. Deviation	13			14	11		10			12		
<b>% % Sat &gt; 50</b>	<b>5%</b>			<b>5%</b>	<b>0%</b>		<b>1%</b>			<b>3%</b>		



**VI. Diabetes**

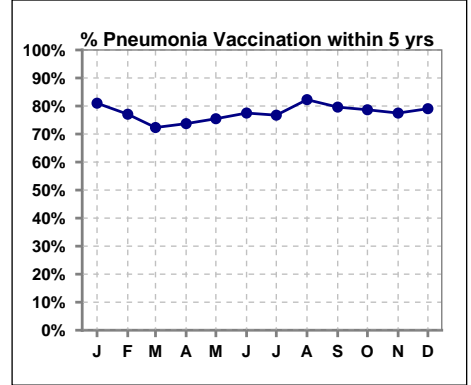
	Jan	Feb	Mar	Apr	May	Jun	Jul	Aug	Sep	Oct	Nov	Dec
# HgA1c	102			100			103			95		
# HgA1c <= 7	63			59			61			54		
Pop. Mean	6.8			6.9			7.0			7.0		
Std. Deviation	1.48			1.61			1.61			1.57		
<b>% HgA1c &lt;= 7</b>	<b>62%</b>			<b>59%</b>			<b>59%</b>			<b>57%</b>		



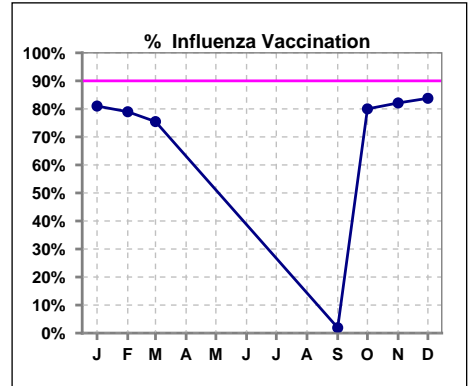
**VII. Infection Control**

**Pneumonia vaccination within the past five years**

	Jan	Feb	Mar	Apr	May	Jun	Jul	Aug	Sep	Oct	Nov	Dec
<b># Patient</b>	158	157	159	156	159	160	159	158	157	150	151	148
<b># Pneumonia</b>	128	121	115	115	120	124	122	130	125	118	117	117
<b>% Pneumonia</b>	81%	77%	72%	74%	75%	78%	77%	82%	80%	79%	77%	79%



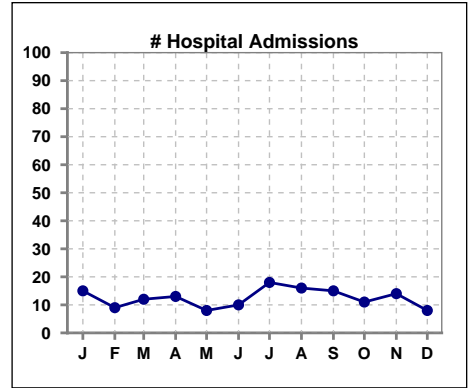
	Jan	Feb	Mar	Apr	May	Jun	Jul	Aug	Sep	Oct	Nov	Dec
<b># Patient</b>	158	157	159						157	150	151	148
<b># Influenza</b>	128	124	120						3	120	124	124
<b>% Influenza</b>	81%	79%	75%						2%	80%	82%	84%



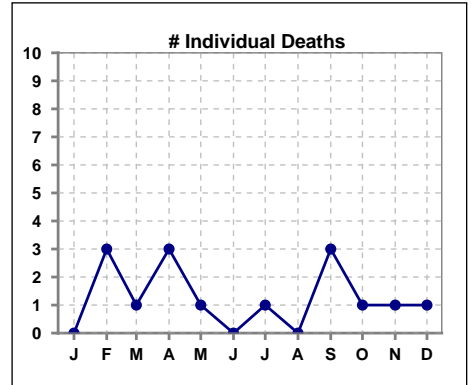
Methodology: a) All labs for 'Adequacy of Dialysis', 'Nutrition', 'Osteodystrophy', 'Anemia' and 'Diabetes' based on last value of month; b) BP's and #L processed are average of all values for month; c) Access data takes last access of month; d) Values for SGA and 'Infection Control' use most recent result.

**VIII. Outcome measures**

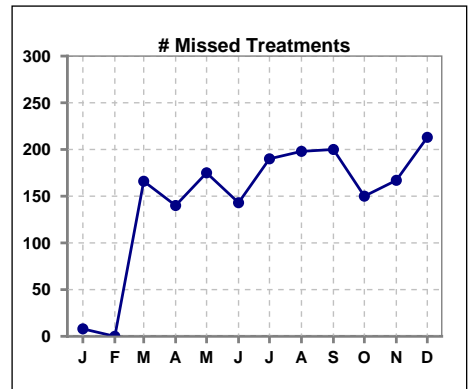
	Jan	Feb	Mar	Apr	May	Jun	Jul	Aug	Sep	Oct	Nov	Dec
<b># Patient</b>	158	157	159	156	159	160	159	158	157	150	151	148
<b># Hospital Admissions</b>	15	9	12	13	8	10	18	16	15	11	14	8



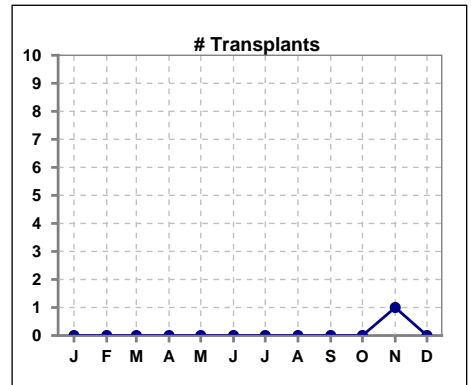
	Jan	Feb	Mar	Apr	May	Jun	Jul	Aug	Sep	Oct	Nov	Dec
<b># Patient</b>	158	157	159	156	159	160	159	158	157	150	151	148
<b># Individual Deaths</b>	0	3	1	3	1	0	1	0	3	1	1	1



	Jan	Feb	Mar	Apr	May	Jun	Jul	Aug	Sep	Oct	Nov	Dec
<b># Patient</b>	158	157	159	156	159	160	159	158	157	150	151	148
<b># Missed Treatments</b>	8	0	166	140	175	143	190	198	200	150	167	213



	Jan	Feb	Mar	Apr	May	Jun	Jul	Aug	Sep	Oct	Nov	Dec
<b># Patient</b>	158	157	159	156	159	160	159	158	157	150	151	148
<b># Transplants</b>	0	0	0	0	0	0	0	0	0	0	1	0



Methodology: a) All labs for 'Adequacy of Dialysis', 'Nutrition', 'Osteodystrophy', 'Anemia' and 'Diabetes' based on last value of month; b) BP's and #L processed are average of all values for month; c) Access data takes last access of month; d) Values for SGA and 'Infection Control' use most recent result.