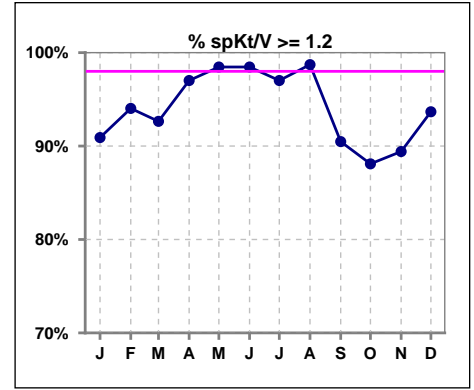
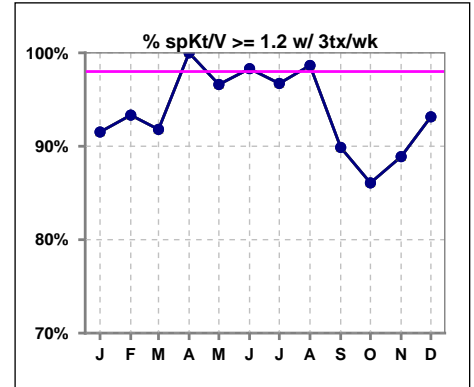


I. ADEQUACY OF DIALYSIS

	Jan	Feb	Mar	Apr	May	Jun	Jul	Aug	Sep	Oct	Nov	Dec
# spKt/V	66	67	68	67	65	65	67	78	84	84	85	79
# spKt/V >= 1.2	60	63	63	65	64	64	65	77	76	74	76	74
Pop. Mean	1.61	1.58	1.57	1.59	1.54	1.62	1.58	1.57	1.54	1.50	1.52	1.61
Std. Deviation	0.38	0.37	0.32	0.33	0.29	0.34	0.32	0.27	0.33	0.33	0.34	0.35
% spKt/V >= 1.2	91%	94%	93%	97%	98%	98%	97%	99%	90%	88%	89%	94%



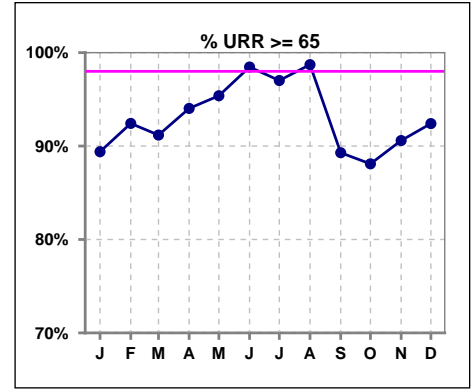
	Jan	Feb	Mar	Apr	May	Jun	Jul	Aug	Sep	Oct	Nov	Dec
# spKt/V w/ 3tx/wk	59	60	61	61	59	59	61	74	79	79	81	73
# spKt/V >= 1.2 w/3tx/wk	54	56	56	61	57	58	59	73	71	68	72	68
Pop. Mean	1.61	1.58	1.58	1.61	1.56	1.62	1.59	1.57	1.55	1.50	1.51	1.59
Std. Deviation	0.38	0.38	0.32	0.33	0.30	0.34	0.33	0.28	0.33	0.34	0.34	0.30
% >= 1.2 w/3tx/wk	92%	93%	92%	100%	97%	98%	97%	99%	90%	86%	89%	93%



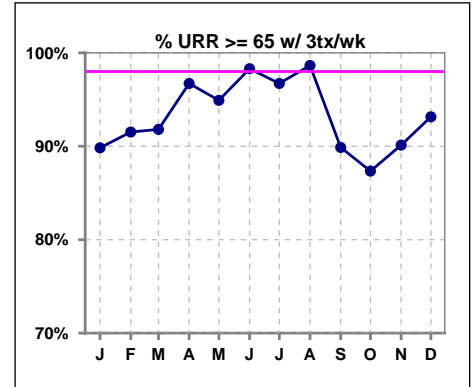
Methodology: a) All labs for 'Adequacy of Dialysis', 'Nutrition', 'Osteodystrophy', 'Anemia' and 'Diabetes' based on last value of month; b) BP's and #L processed are average of all values for month; c) Access data takes last access of month; d) Values for SGA and 'Infection Control' use most recent result.

I. ADEQUACY OF DIALYSIS - CONT.

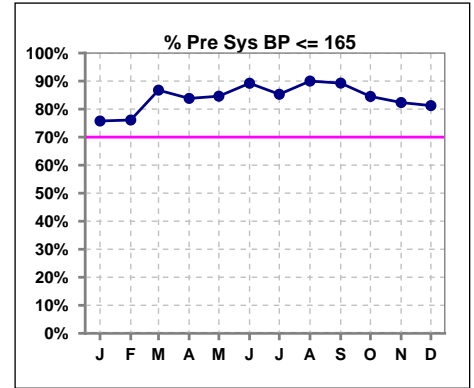
	Jan	Feb	Mar	Apr	May	Jun	Jul	Aug	Sep	Oct	Nov	Dec
# URR	66	66	68	67	65	65	67	78	84	84	85	79
# URR >= 65	59	61	62	63	62	64	65	77	75	74	77	73
Pop. Mean	74	73	73	74	73	74	74	74	73	72	72	74
Std. Deviation	8.44	9.08	7.29	6.58	6.19	7.88	6.18	6.77	6.93	8.48	8.34	6.70
% URR >= 65	89%	92%	91%	94%	95%	98%	97%	99%	89%	88%	91%	92%



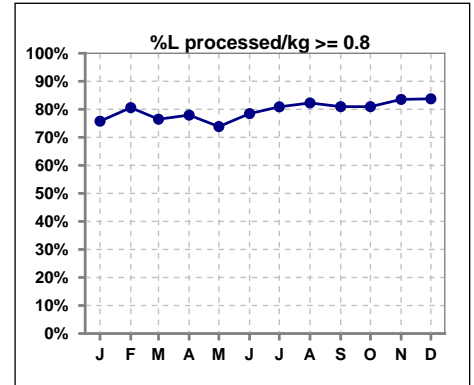
	Jan	Feb	Mar	Apr	May	Jun	Jul	Aug	Sep	Oct	Nov	Dec
# URR w/ 3tx/wk	59	59	61	61	59	59	61	74	79	79	81	73
# URR>=65 w/ 3tx/wk	53	54	56	59	56	58	59	73	71	69	73	68
Pop. Mean	74	73	73	74	73	74	74	74	73	72	72	74
Std. Deviation	8.49	9.41	7.21	6.42	6.34	8.08	6.36	6.95	7.05	8.72	8.50	6.46
% URR>=65 w/ 3tx/wk	90%	92%	92%	97%	95%	98%	97%	99%	90%	87%	90%	93%



	Jan	Feb	Mar	Apr	May	Jun	Jul	Aug	Sep	Oct	Nov	Dec
# Pre Sys BP	66	67	68	68	65	65	68	80	84	84	85	80
# Pre Sys BP <= 165	51	51	60	57	55	59	58	72	76	71	70	65
Pop. Mean	148	150	145	147	147	143	145	145	144	147	147	149
Std. Deviation	18.9	19.0	16.3	17.8	18.3	18.3	17.9	18.8	17.9	19.7	18.8	20.4
%Pre Sys BP <=165	76%	76%	87%	84%	85%	89%	85%	90%	89%	85%	82%	81%



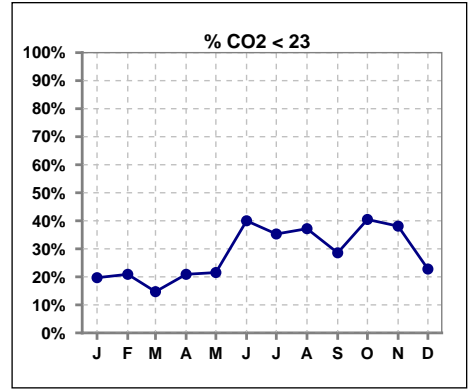
	Jan	Feb	Mar	Apr	May	Jun	Jul	Aug	Sep	Oct	Nov	Dec
# L processed/kg	66	67	68	68	65	65	68	79	84	84	85	80
# L processed/kg>=0.8	50	54	52	53	48	51	55	65	68	68	71	67
Pop. Mean	1	1	1	1	1	1	1	1	1	1	1	1
Std. Deviation	0.3	0.3	0.3	0.3	0.3	0.3	0.3	0.3	0.3	0.3	0.3	0.3
% L processed/kg>=0.8	76%	81%	76%	78%	74%	78%	81%	82%	81%	81%	84%	84%



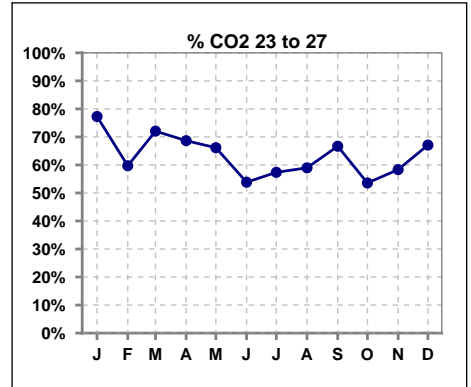
Methodology: a) All labs for 'Adequacy of Dialysis', 'Nutrition', 'Osteodystrophy', 'Anemia' and 'Diabetes' based on last value of month; b) BP's and #L processed are average of all values for month; c) Access data takes last access of month; d) Values for SGA and 'Infection Control' use most recent result.

I. ADEQUACY OF DIALYSIS - CONT.

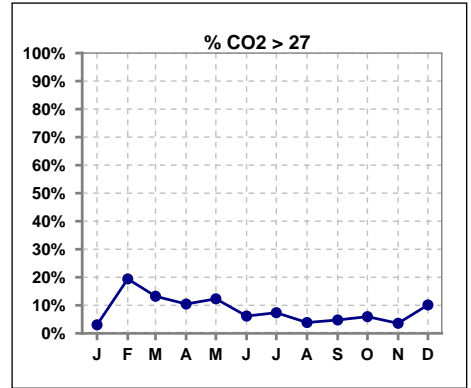
	Jan	Feb	Mar	Apr	May	Jun	Jul	Aug	Sep	Oct	Nov	Dec
# CO2	66	67	68	67	65	65	68	78	84	84	84	79
# CO2 < 23	13	14	10	14	14	26	24	29	24	34	32	18
Pop. Mean	24	25	25	25	24	24	24	23	24	23	23	24
Std. Deviation	2.70	3.35	3.16	2.72	2.83	2.71	2.64	2.62	2.83	2.84	2.86	2.88
% CO2 < 23	20%	21%	15%	21%	22%	40%	35%	37%	29%	40%	38%	23%



	Jan	Feb	Mar	Apr	May	Jun	Jul	Aug	Sep	Oct	Nov	Dec
# CO2	66	67	68	67	65	65	68	78	84	84	84	79
# CO2 23 to 27	51	40	49	46	43	35	39	46	56	45	49	53
Pop. Mean	24	25	25	25	24	24	24	23	24	23	23	24
Std. Deviation	2.70	3.35	3.16	2.72	2.83	2.71	2.64	2.62	2.83	2.84	2.86	2.88
% CO2 23 to 27	77%	60%	72%	69%	66%	54%	57%	59%	67%	54%	58%	67%



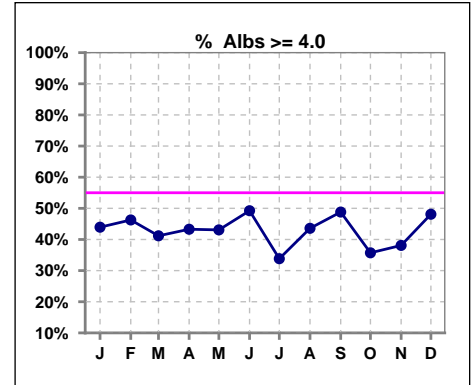
	Jan	Feb	Mar	Apr	May	Jun	Jul	Aug	Sep	Oct	Nov	Dec
# CO2	66	67	68	67	65	65	68	78	84	84	84	79
# CO2 > 27	2	13	9	7	8	4	5	3	4	5	3	8
Pop. Mean	24	25	25	25	24	24	24	23	24	23	23	24
Std. Deviation	2.70	3.35	3.16	2.72	2.83	2.71	2.64	2.62	2.83	2.84	2.86	2.88
% CO2 > 27	3%	19%	13%	10%	12%	6%	7%	4%	5%	6%	4%	10%



*Albumin values use BCG method - as of July 2001

II. NUTRITION

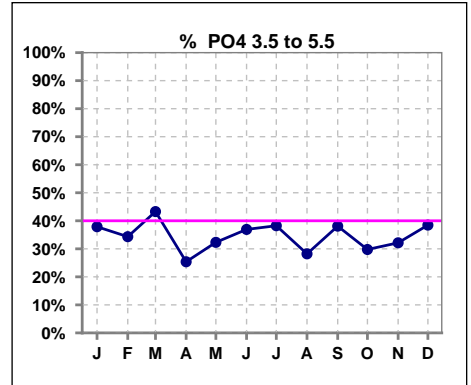
	Jan	Feb	Mar	Apr	May	Jun	Jul	Aug	Sep	Oct	Nov	Dec
# Albumin	66	67	68	67	65	65	68	78	84	84	84	79
# Albumin >= 4.0	29	31	28	29	28	32	23	34	41	30	32	38
Pop. Mean	3.8	3.9	3.8	3.9	3.8	3.9	3.7	3.9	3.9	3.8	3.8	3.9
Std. Deviation	0.45	0.47	0.54	0.41	0.47	0.48	0.44	0.46	0.48	0.48	0.46	0.44
% Alb >= 4.0	44%	46%	41%	43%	43%	49%	34%	44%	49%	36%	38%	48%



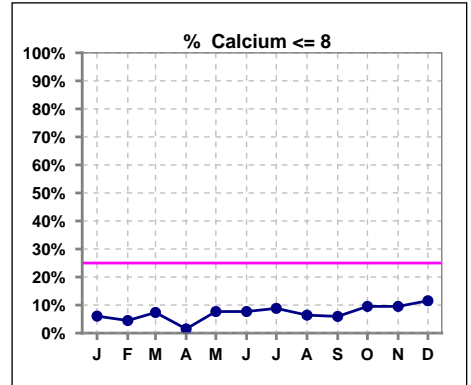
Lab methodology for PTH changed January 2012

III. OSTEODYSTROPHY

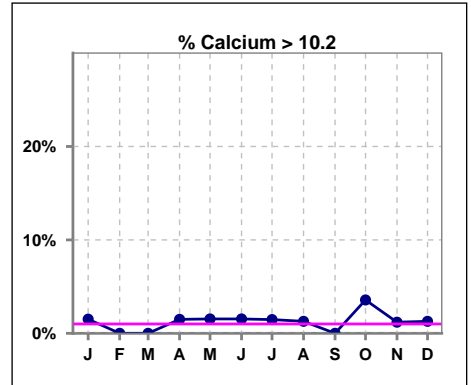
	Jan	Feb	Mar	Apr	May	Jun	Jul	Aug	Sep	Oct	Nov	Dec
# PO4	66	67	67	67	65	65	68	78	84	84	84	78
# PO4 3.5 to 5.5	25	23	29	17	21	24	26	22	32	25	27	30
Pop. Mean	6.4	6.4	6.1	6.7	6.1	6.3	6.1	6.4	6.0	5.8	6.3	6.1
Std. Deviation	2.13	2.30	1.87	2.02	1.75	1.73	1.89	1.91	1.96	1.90	1.94	2.11
% PO4 3.5 to 5.5	38%	34%	43%	25%	32%	37%	38%	28%	38%	30%	32%	38%



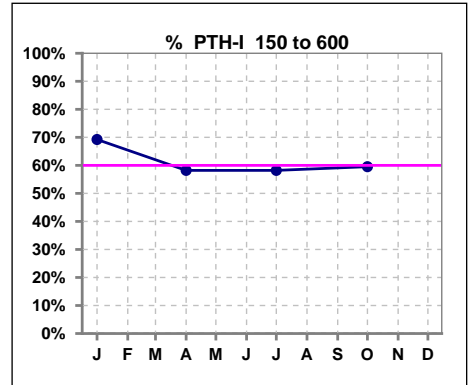
	Jan	Feb	Mar	Apr	May	Jun	Jul	Aug	Sep	Oct	Nov	Dec
# Calcium	66	67	68	67	65	65	68	78	84	84	84	78
# Calcium <= 8	4	3	5	1	5	5	6	5	5	8	8	9
Pop. Mean	9.2	9.1	9.2	9.2	9.2	9.1	9.0	9.1	9.0	9.0	9.1	9.1
Std. Deviation	0.67	0.59	0.66	0.67	0.87	0.69	0.71	0.72	0.66	0.76	0.71	0.73
% Calcium <= 8	6%	4%	7%	1%	8%	8%	9%	6%	6%	10%	10%	12%



	Jan	Feb	Mar	Apr	May	Jun	Jul	Aug	Sep	Oct	Nov	Dec
# Calcium	66	67	68	67	65	65	68	78	84	84	84	78
# Calcium > 10.2	1	0	0	1	1	1	1	1	0	3	1	1
Pop. Mean	9.2	9.1	9.2	9.2	9.2	9.1	9.0	9.1	9.0	9.0	9.1	9.1
Std. Deviation	0.67	0.59	0.66	0.67	0.87	0.69	0.71	0.72	0.66	0.76	0.71	0.73
% Calcium > 10.2	2%	0%	0%	1%	2%	2%	1%	1%	0%	4%	1%	1%



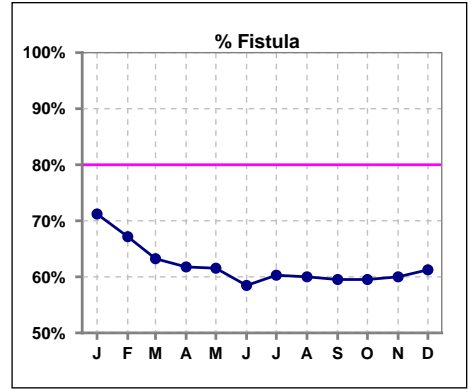
	Jan	Feb	Mar	Apr	May	Jun	Jul	Aug	Sep	Oct	Nov	Dec
# PTH-I	65			67			67			84		
# PTH-I 150 to 600	45			39			39			50		
Pop. Mean	533			443			396			566		
Std. Deviation	493			314			340			744		
% PTH-I 150 to 600	69%			58%			58%			60%		



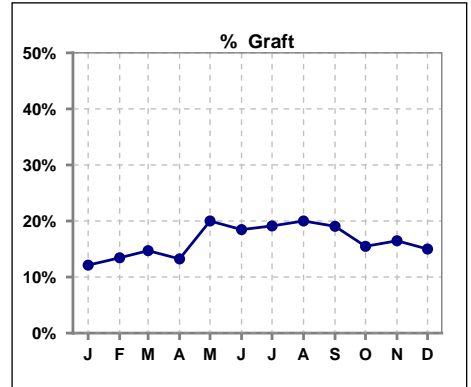
Methodology: a) All labs for 'Adequacy of Dialysis', 'Nutrition', 'Osteodystrophy', 'Anemia' and 'Diabetes' based on last value of month; b) BP's and #L processed are average of all values for month; c) Access data takes last access of month; d) Values for SGA and 'Infection Control' use most recent result.

IV. ACCESS

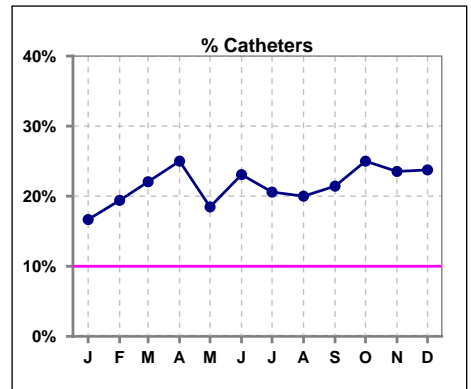
	Jan	Feb	Mar	Apr	May	Jun	Jul	Aug	Sep	Oct	Nov	Dec
# Access	66	67	68	68	65	65	68	80	84	84	85	80
# Fistula	47	45	43	42	40	38	41	48	50	50	51	49
% Fistula	71%	67%	63%	62%	62%	58%	60%	60%	60%	60%	60%	61%



	Jan	Feb	Mar	Apr	May	Jun	Jul	Aug	Sep	Oct	Nov	Dec
# Access	66	67	68	68	65	65	68	80	84	84	85	80
# Graft	8	9	10	9	13	12	13	16	16	13	14	12
% Graft	12%	13%	15%	13%	20%	18%	19%	20%	19%	15%	16%	15%



	Jan	Feb	Mar	Apr	May	Jun	Jul	Aug	Sep	Oct	Nov	Dec
# Access	66	67	68	68	65	65	68	80	84	84	85	80
# Catheters	11	13	15	17	12	15	14	16	18	21	20	19
% Catheters	17%	19%	22%	25%	18%	23%	21%	20%	21%	25%	24%	24%



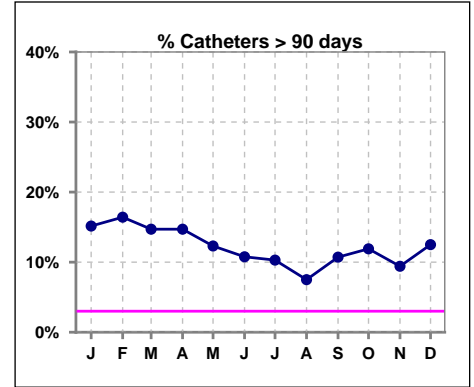
Methodology: a) All labs for 'Adequacy of Dialysis', 'Nutrition', 'Osteodystrophy', 'Anemia' and 'Diabetes' based on last value of month; b) BP's and #L processed are average of all values for month; c) Access data takes last access of month; d) Values for SGA and 'Infection Control' use most recent result.

IV. ACCESS - CONT.

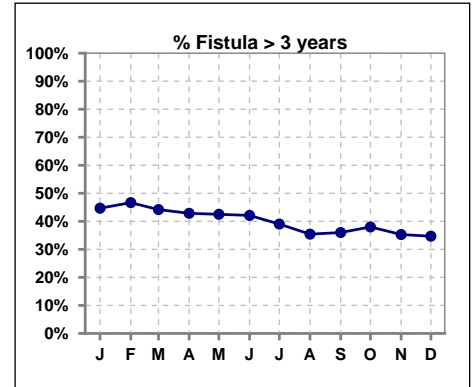
Catheters > 90 days

	Jan	Feb	Mar	Apr	May	Jun	Jul	Aug	Sep	Oct	Nov	Dec
# Access	66	67	68	68	65	65	68	80	84	84	85	80
# Catheters	10	11	10	10	8	7	7	6	9	10	8	10
% Catheters	15%	16%	15%	15%	12%	11%	10%	8%	11%	12%	9%	13%

Definition: Catheter in use on last treatment of the month



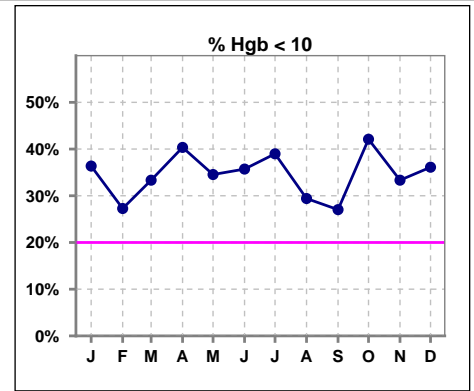
	Jan	Feb	Mar	Apr	May	Jun	Jul	Aug	Sep	Oct	Nov	Dec
# Fistula	47	45	43	42	40	38	41	48	50	50	51	49
# Fistula > 3 yrs	21	21	19	18	17	16	16	17	18	19	18	17
% Fistula > 3 yrs	45%	47%	44%	43%	43%	42%	39%	35%	36%	38%	35%	35%



V. ANEMIA

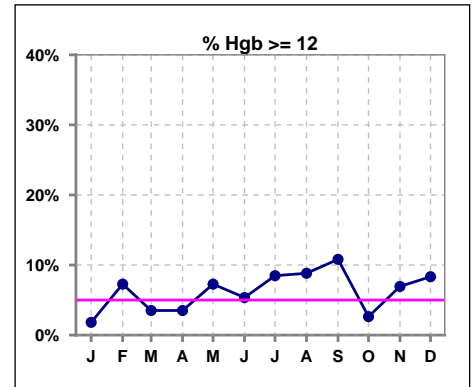
	Jan	Feb	Mar	Apr	May	Jun	Jul	Aug	Sep	Oct	Nov	Dec
# Hgb	55	55	57	57	55	56	59	68	74	76	72	72
# Hgb < 10	20	15	19	23	19	20	23	20	20	32	24	26
Pop. Mean	10.2	10.4	10.2	10.2	10.3	10.1	10.5	10.6	10.4	10.1	10.3	10.4
Std. Deviation	1.4	1.3	1.3	1.2	1.4	1.6	1.4	1.5	1.6	1.5	1.5	1.5
% Hgb < 10	36%	27%	33%	40%	35%	36%	39%	29%	27%	42%	33%	36%

Note: Excludes patients who received no ESA in month.



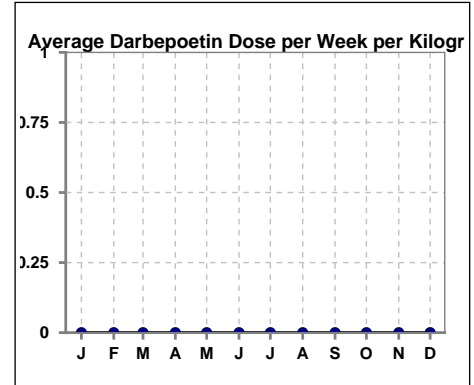
	Jan	Feb	Mar	Apr	May	Jun	Jul	Aug	Sep	Oct	Nov	Dec
# Hgb	55	55	57	57	55	56	59	68	74	76	72	72
# Hgb >= 12	1	4	2	2	4	3	5	6	8	2	5	6
Pop. Mean	10.2	10.4	10.2	10.2	10.3	10.1	10.5	10.6	10.4	10.1	10.3	10.4
Std. Deviation	1.4	1.3	1.3	1.2	1.4	1.6	1.4	1.5	1.6	1.5	1.5	1.5
% Hgb >= 12	2%	7%	4%	4%	7%	5%	8%	9%	11%	3%	7%	8%

Note: Excludes patients who received no ESA in month.



Average Darbepoetin Dose per Week per Kilogram

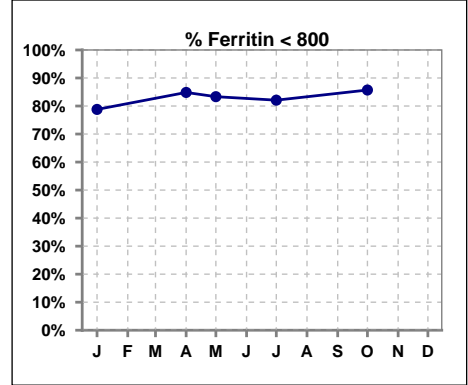
	Jan	Feb	Mar	Apr	May	Jun	Jul	Aug	Sep	Oct	Nov	Dec
# Average Darbepoetin	0	0	0	0	0	0	0	0	0	0	0	0



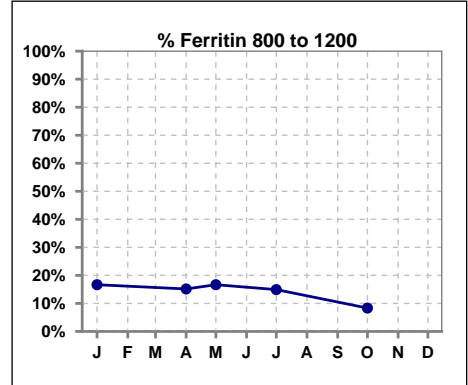
V. ANEMIA - CONT.

Iron Profile

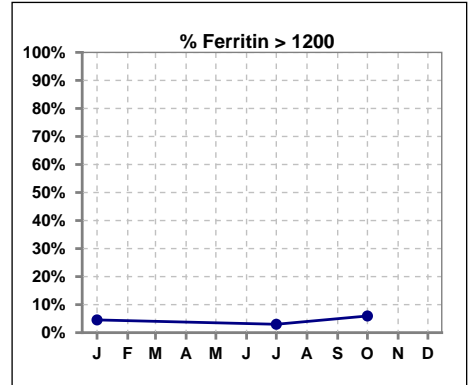
	Jan	Feb	Mar	Apr	May	Jun	Jul	Aug	Sep	Oct	Nov	Dec
# Ferritin	66			66	6		67			84		
# Ferritin < 800	52			56	5		55			72		
Pop. Mean	580			500	378		523			495		
Std. Deviation	352			264	312		336			350		
% Ferritin < 800	79%			85%	83%		82%			86%		



	Jan	Feb	Mar	Apr	May	Jun	Jul	Aug	Sep	Oct	Nov	Dec
# Ferritin	66			66	6		67			84		
# Ferritin 800 to 1200	11			10	1		10			7		
Pop. Mean	580			500	378		523			495		
Std. Deviation	352			264	312		336			350		
% Ferritin 800 to 1200	17%			15%	17%		15%			8%		



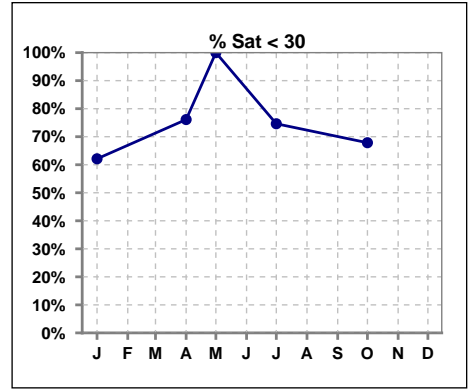
	Jan	Feb	Mar	Apr	May	Jun	Jul	Aug	Sep	Oct	Nov	Dec
# Ferritin	66			66	6		67			84		
# Ferritin > 1200	3						2			5		
Pop. Mean	580			500	378		523			495		
Std. Deviation	352			264	312		336			350		
% Ferritin > 1200	5%						3%			6%		



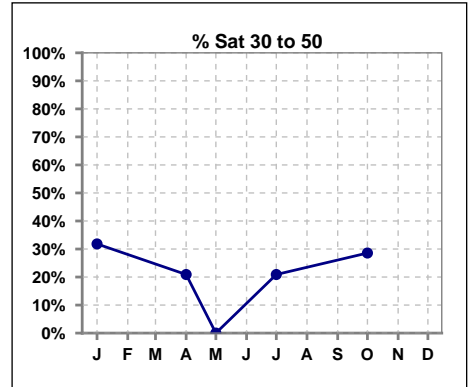
Methodology: a) All labs for 'Adequacy of Dialysis', 'Nutrition', 'Osteodystrophy', 'Anemia' and 'Diabetes' based on last value of month; b) BP's and #L processed are average of all values for month; c) Access data takes last access of month; d) Values for SGA and 'Infection Control' use most recent result.

V. ANEMIA - CONT.

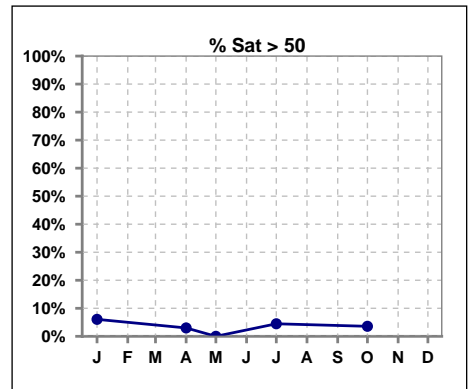
	Jan	Feb	Mar	Apr	May	Jun	Jul	Aug	Sep	Oct	Nov	Dec
# % Sat	66			67	5		67			84		
# % Sat < 30	41			51	5		50			57		
Pop. Mean	27			24	21		26			25		
Std. Deviation	12			11	6		14			11		
% % Sat < 30	62%			76%	100%		75%			68%		



	Jan	Feb	Mar	Apr	May	Jun	Jul	Aug	Sep	Oct	Nov	Dec
# % Sat	66			67	5		67			84		
# % Sat 30 to 50	21			14	0		14			24		
Pop. Mean	27			24	21		26			25		
Std. Deviation	12			11	6		14			11		
% % Sat 30 to 50	32%			21%	0%		21%			29%		

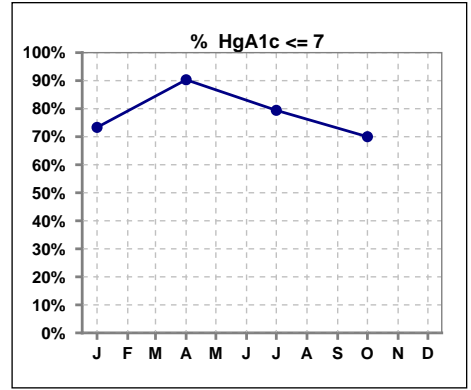


	Jan	Feb	Mar	Apr	May	Jun	Jul	Aug	Sep	Oct	Nov	Dec
# % Sat	66			67	5		67			84		
# % Sat > 50	4			2	0		3			3		
Pop. Mean	27			24	21		26			25		
Std. Deviation	12			11	6		14			11		
% % Sat > 50	6%			3%	0%		4%			4%		



VI. Diabetes

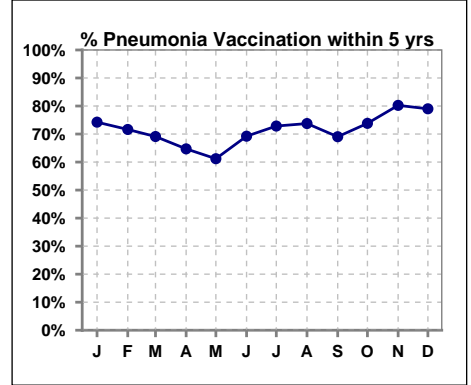
	Jan	Feb	Mar	Apr	May	Jun	Jul	Aug	Sep	Oct	Nov	Dec
# HgA1c	30			31			34			40		
# HgA1c <= 7	22			28			27			28		
Pop. Mean	6.6			6.2			6.4			6.5		
Std. Deviation	1.39			1.23			1.17			1.44		
% HgA1c <= 7	73%			90%			79%			70%		



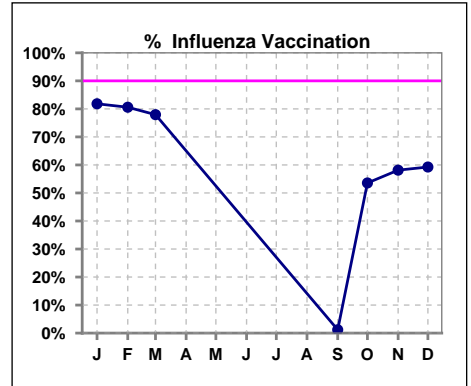
VII. Infection Control

Pneumonia vaccination within the past five years

	Jan	Feb	Mar	Apr	May	Jun	Jul	Aug	Sep	Oct	Nov	Dec
# Patient	66	67	68	68	67	65	70	80	84	84	86	81
# Pneumonia	49	48	47	44	41	45	51	59	58	62	69	64
% Pneumonia	74%	72%	69%	65%	61%	69%	73%	74%	69%	74%	80%	79%



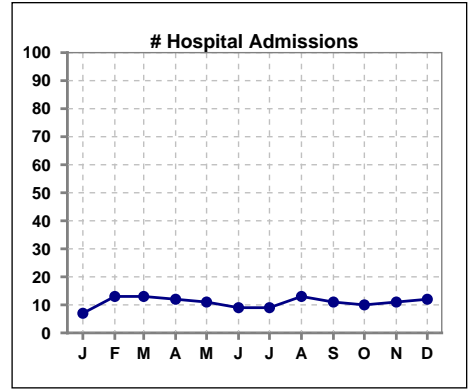
	Jan	Feb	Mar	Apr	May	Jun	Jul	Aug	Sep	Oct	Nov	Dec
# Patient	66	67	68						84	84	86	81
# Influenza	54	54	53						1	45	50	48
% Influenza	82%	81%	78%						1%	54%	58%	59%



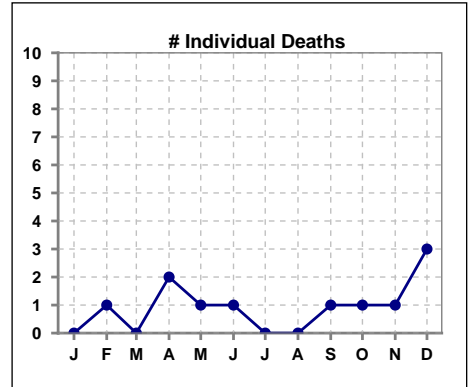
Methodology: a) All labs for 'Adequacy of Dialysis', 'Nutrition', 'Osteodystrophy', 'Anemia' and 'Diabetes' based on last value of month; b) BP's and #L processed are average of all values for month; c) Access data takes last access of month; d) Values for SGA and 'Infection Control' use most recent result.

VIII. Outcome measures

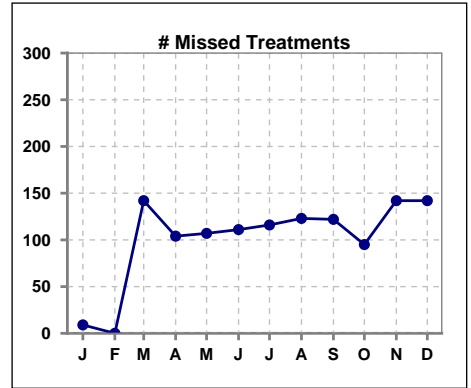
	Jan	Feb	Mar	Apr	May	Jun	Jul	Aug	Sep	Oct	Nov	Dec
# Patient	66	67	68	68	67	65	70	80	84	84	86	81
# Hospital Admissions	7	13	13	12	11	9	9	13	11	10	11	12



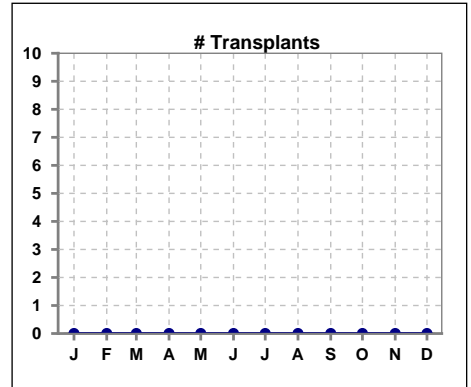
	Jan	Feb	Mar	Apr	May	Jun	Jul	Aug	Sep	Oct	Nov	Dec
# Patient	66	67	68	68	67	65	70	80	84	84	86	81
# Individual Deaths	0	1	0	2	1	1	0	0	1	1	1	3



	Jan	Feb	Mar	Apr	May	Jun	Jul	Aug	Sep	Oct	Nov	Dec
# Patient	66	67	68	68	67	65	70	80	84	84	86	81
# Missed Treatments	9	0	142	104	107	111	116	123	122	95	142	142



	Jan	Feb	Mar	Apr	May	Jun	Jul	Aug	Sep	Oct	Nov	Dec
# Patient	66	67	68	68	67	65	70	80	84	84	86	81
# Transplants	0	0	0	0	0	0	0	0	0	0	0	0



Methodology: a) All labs for 'Adequacy of Dialysis', 'Nutrition', 'Osteodystrophy', 'Anemia' and 'Diabetes' based on last value of month; b) BP's and #L processed are average of all values for month; c) Access data takes last access of month; d) Values for SGA and 'Infection Control' use most recent result.