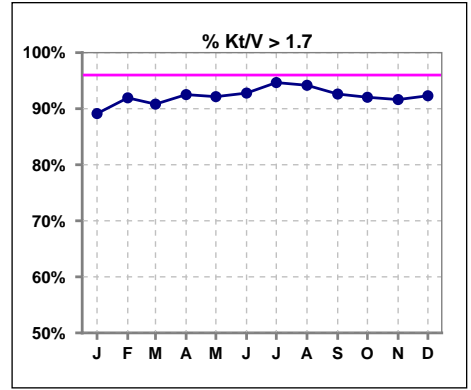
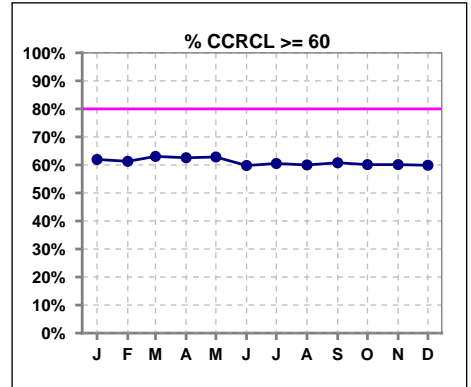


I. ADEQUACY OF DIALYSIS

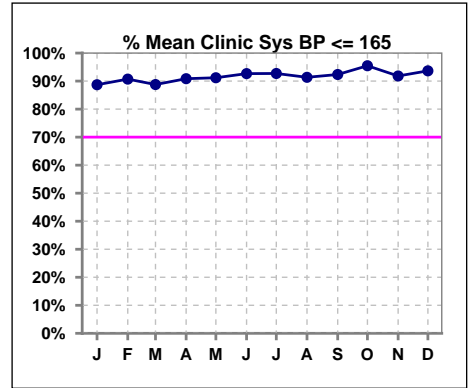
	Jan	Feb	Mar	Apr	May	Jun	Jul	Aug	Sep	Oct	Nov	Dec
# Kt/V - CA/CC PD	184	186	185	187	191	194	206	206	203	201	203	208
# Kt/V >= 1.7	164	171	168	173	176	180	195	194	188	185	186	192
Pop. Mean	2.16	2.16	2.16	2.15	2.17	2.17	2.20	2.20	2.20	2.18	2.16	2.17
Std. Deviation	0.42	0.48	0.45	0.44	0.46	0.48	0.51	0.49	0.52	0.51	0.48	0.47
% Kt/V >= 1.7	89%	92%	91%	93%	92%	93%	95%	94%	93%	92%	92%	92%



	Jan	Feb	Mar	Apr	May	Jun	Jul	Aug	Sep	Oct	Nov	Dec
# CRCL CA/CC PD	184	186	184	187	191	194	195	190	181	173	168	162
# CCRCL >= 60	114	114	116	117	120	116	118	114	110	104	101	97
Pop. Mean	72.16	72.39	72.28	72.86	73.74	73.31	73.70	73.39	73.42	73.57	73.82	74.32
Std. Deviation	27.15	30.43	29.23	28.53	29.55	30.30	30.43	30.67	30.08	30.53	30.82	31.13
% CCRCL >= 60	62%	61%	63%	63%	63%	60%	61%	60%	61%	60%	60%	60%



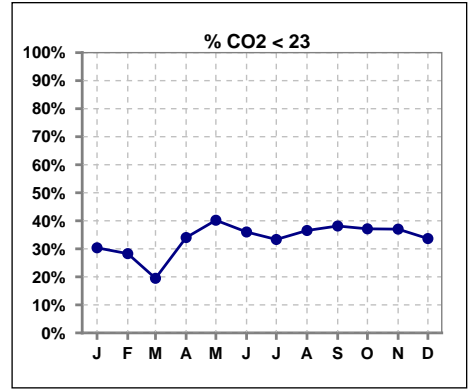
	Jan	Feb	Mar	Apr	May	Jun	Jul	Aug	Sep	Oct	Nov	Dec
# Mean Clinic Sys BP	177	183	178	186	193	191	206	208	196	199	208	205
# Sys BP <= 165	157	166	158	169	176	177	194	191	184	191	194	194
Pop. Mean	139	138	138	136	138	137	135	145	140	136	140	138
Std. Deviation	21.8	22.4	22.5	21.5	22.1	20.0	21.2	86.7	30.2	18.6	19.0	20.3
% Sys BP <=165	89%	91%	89%	91%	91%	93%	93%	91%	92%	95%	92%	94%



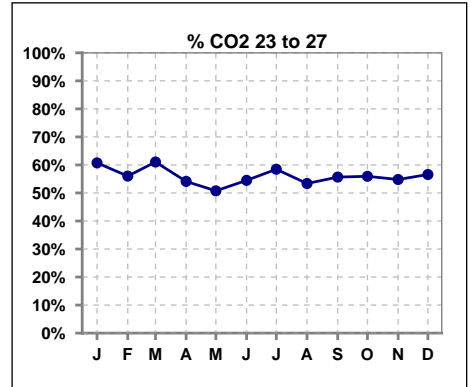
Methodology: a) Kt/V, CRCL and nPNa values are 4 month rolling mean of last value for each month, all other report lab results are based on last value of month; b) BP's are average of all values for month.

I. ADEQUACY OF DIALYSIS - CONT.

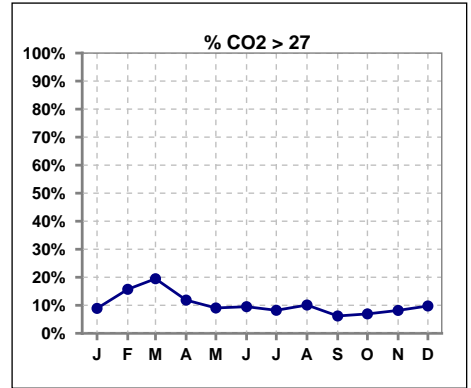
	Jan	Feb	Mar	Apr	May	Jun	Jul	Aug	Sep	Oct	Nov	Dec
# CO2	191	191	190	194	199	200	207	208	194	202	208	205
# CO2 < 23	58	54	37	66	80	72	69	76	74	75	77	69
Pop. Mean	24	24	25	24	23	24	24	23	23	23	23	24
Std. Deviation	3.05	3.01	3.09	3.25	3.07	3.17	3.04	3.30	3.21	3.04	3.13	3.35
% CO2 < 23	30%	28%	19%	34%	40%	36%	33%	37%	38%	37%	37%	34%



	Jan	Feb	Mar	Apr	May	Jun	Jul	Aug	Sep	Oct	Nov	Dec
# CO2	191	191	190	194	199	200	207	208	194	202	208	205
# CO2 23 to 27	116	107	116	105	101	109	121	111	108	113	114	116
Pop. Mean	24	24	25	24	23	24	24	23	23	23	23	24
Std. Deviation	3.05	3.01	3.09	3.25	3.07	3.17	3.04	3.30	3.21	3.04	3.13	3.35
% CO2 23 to 27	61%	56%	61%	54%	51%	55%	58%	53%	56%	56%	55%	57%



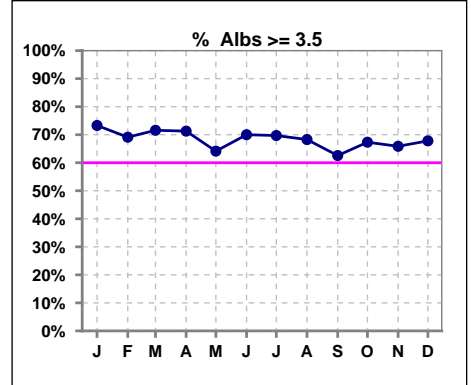
	Jan	Feb	Mar	Apr	May	Jun	Jul	Aug	Sep	Oct	Nov	Dec
# CO2	191	191	190	194	199	200	207	208	194	202	208	205
# CO2 > 27	17	30	37	23	18	19	17	21	12	14	17	20
Pop. Mean	24	24	25	24	23	24	24	23	23	23	23	24
Std. Deviation	3.05	3.01	3.09	3.25	3.07	3.17	3.04	3.30	3.21	3.04	3.13	3.35
% CO2 > 27	9%	16%	19%	12%	9%	10%	8%	10%	6%	7%	8%	10%



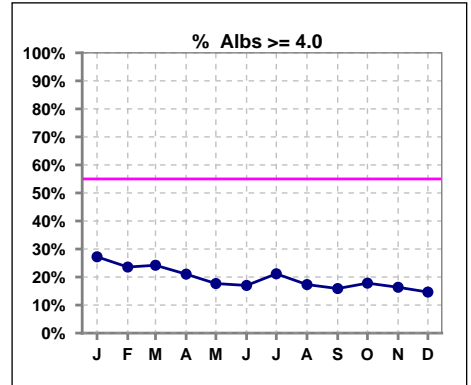
*Albumin values use BCG method - as of July 2001

II. NUTRITION

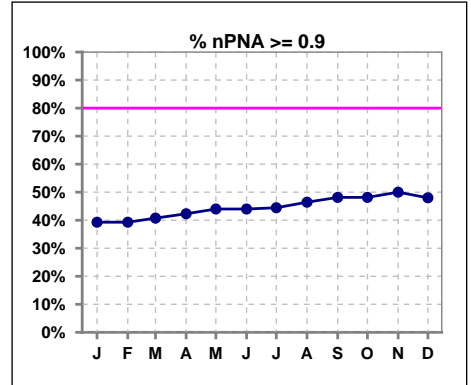
	Jan	Feb	Mar	Apr	May	Jun	Jul	Aug	Sep	Oct	Nov	Dec
# Albumin	191	191	190	195	198	200	208	208	195	202	208	205
# Albumin >= 3.5	140	132	136	139	127	140	145	142	122	136	137	139
Pop. Mean	3.7	3.6	3.6	3.6	3.6	3.6	3.6	3.6	3.6	3.6	3.6	3.6
Std. Deviation	0.44	0.46	0.47	0.45	0.42	0.39	0.42	0.39	0.38	0.41	0.43	0.40
% Alb >= 3.5	73%	69%	72%	71%	64%	70%	70%	68%	63%	67%	66%	68%



	Jan	Feb	Mar	Apr	May	Jun	Jul	Aug	Sep	Oct	Nov	Dec
# Albumin	191	191	190	195	198	200	208	208	195	202	208	205
# Albumin >= 4.0	52	45	46	41	35	34	44	36	31	36	34	30
Pop. Mean	3.7	3.6	3.6	3.6	3.6	3.6	3.6	3.6	3.6	3.6	3.6	3.6
Std. Deviation	0.44	0.46	0.47	0.45	0.42	0.39	0.42	0.39	0.38	0.41	0.43	0.40
% Alb >= 4.0	27%	24%	24%	21%	18%	17%	21%	17%	16%	18%	16%	15%



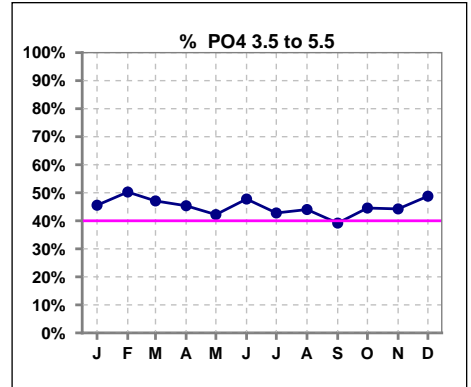
	Jan	Feb	Mar	Apr	May	Jun	Jul	Aug	Sep	Oct	Nov	Dec
# nPNA	28	28	27	26	25	25	27	28	27	27	26	25
# nPNA >= 0.9	11	11	11	11	11	11	12	13	13	13	13	12
Pop. Mean	1.0	1.0	1.0	1.0	1.0	1.0	1.0	1.0	1.0	1.0	1.0	1.0
Std. Deviation	0.30	0.30	0.30	0.30	0.31	0.31	0.31	0.33	0.34	0.34	0.34	0.35
% nPNA >= 0.9	39%	39%	41%	42%	44%	44%	44%	46%	48%	48%	50%	48%



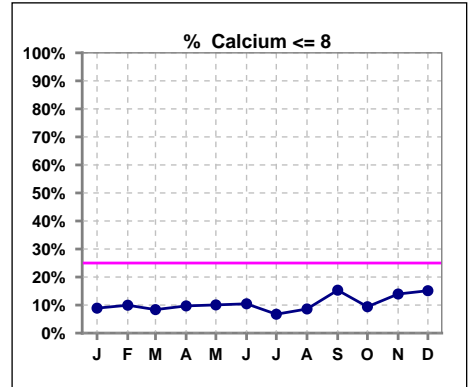
Lab methodology for PTH changed January 2012

III. OSTEODYSTROPHY

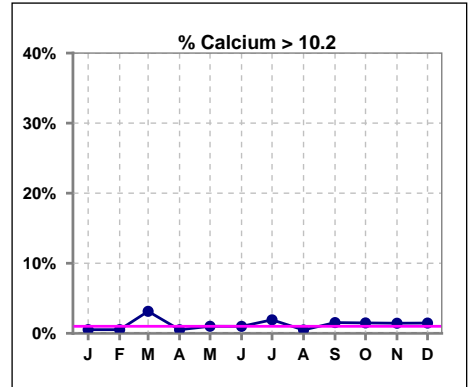
	Jan	Feb	Mar	Apr	May	Jun	Jul	Aug	Sep	Oct	Nov	Dec
# PO4	191	191	189	194	199	201	208	209	194	202	208	205
# PO4 3.5 to 5.5	87	96	89	88	84	96	89	92	76	90	92	100
Pop. Mean	5.7	5.6	5.8	5.8	5.8	5.9	5.9	5.8	6.0	5.8	5.8	5.9
Std. Deviation	1.49	1.50	1.65	1.60	1.67	1.73	1.68	1.56	1.68	1.72	1.64	1.72
% PO4 3.5 to 5.5	46%	50%	47%	45%	42%	48%	43%	44%	39%	45%	44%	49%



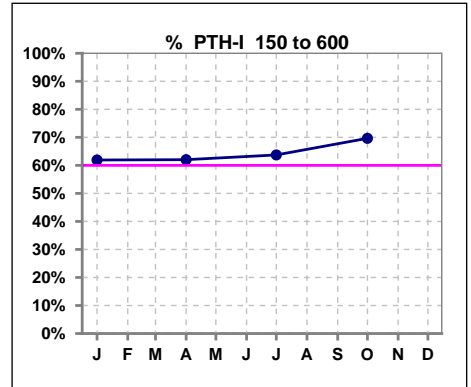
	Jan	Feb	Mar	Apr	May	Jun	Jul	Aug	Sep	Oct	Nov	Dec
# Calcium	191	191	191	196	199	201	208	209	196	202	208	205
# Calcium <= 8	17	19	16	19	20	21	14	18	30	19	29	31
Pop. Mean	9.0	9.0	9.0	9.0	9.0	9.0	9.0	8.9	8.8	8.9	8.9	8.8
Std. Deviation	0.65	0.67	0.74	0.70	0.67	0.69	0.71	0.72	0.77	0.71	0.80	0.79
% Calcium <= 8	9%	10%	8%	10%	10%	10%	7%	9%	15%	9%	14%	15%



	Jan	Feb	Mar	Apr	May	Jun	Jul	Aug	Sep	Oct	Nov	Dec
# Calcium	191	191	191	196	199	201	208	209	196	202	208	205
# Calcium > 10.2	1	1	6	1	2	2	4	1	3	3	3	3
Pop. Mean	9.0	9.0	9.0	9.0	9.0	9.0	9.0	8.9	8.8	8.9	8.9	8.8
Std. Deviation	0.65	0.67	0.74	0.70	0.67	0.69	0.71	0.72	0.77	0.71	0.80	0.79
% Calcium > 10.2	1%	1%	3%	1%	1%	1%	2%	0%	2%	1%	1%	1%



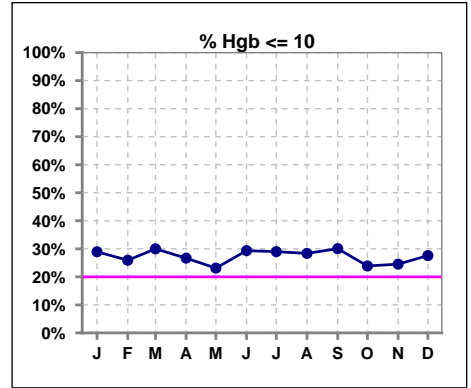
	Jan	Feb	Mar	Apr	May	Jun	Jul	Aug	Sep	Oct	Nov	Dec
# PTH-I	189			187			204			201		
# PTH-I 150 to 600	117			116			130			140		
Pop. Mean	475			490			445			439		
Std. Deviation	346			342			318			305		
% PTH-I 150 to 600	62%			62%			64%			70%		



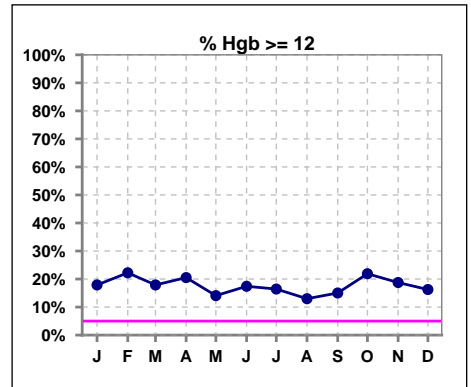
Methodology: a) KtV, CRCL and nPNa values are 4 month rolling mean of last value for each month, all other report lab results are based on last value of month; b) BP's are average of all values for month.

IV. ANEMIA

	Jan	Feb	Mar	Apr	May	Jun	Jul	Aug	Sep	Oct	Nov	Dec
# Hgb	190	189	190	195	199	201	207	208	193	201	208	203
# Hgb <= 10	55	49	57	52	46	59	60	59	58	48	51	56
Pop. Mean	10.8	10.9	10.8	10.8	10.7	10.8	10.7	10.6	10.7	10.9	10.8	10.8
Std. Deviation	1.3	1.6	1.5	1.4	1.3	1.5	1.4	1.3	1.3	1.4	1.5	1.4
% Hgb <= 10	29%	26%	30%	27%	23%	29%	29%	28%	30%	24%	25%	28%



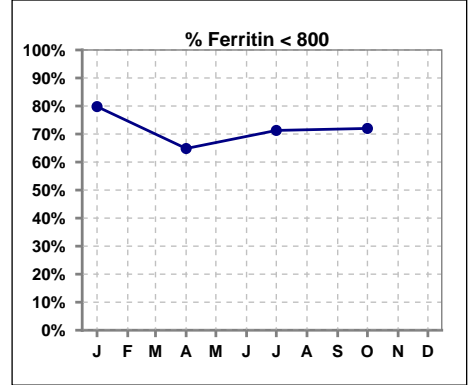
	Jan	Feb	Mar	Apr	May	Jun	Jul	Aug	Sep	Oct	Nov	Dec
# Hgb	190	189	190	195	199	201	207	208	193	201	208	203
# Hgb >= 12	34	42	34	40	28	35	34	27	29	44	39	33
Pop. Mean	10.8	10.9	10.8	10.8	10.7	10.8	10.7	10.6	10.7	10.9	10.8	10.8
Std. Deviation	1.3	1.6	1.5	1.4	1.3	1.5	1.4	1.3	1.3	1.4	1.5	1.4
% Hgb >= 12	18%	22%	18%	21%	14%	17%	16%	13%	15%	22%	19%	16%



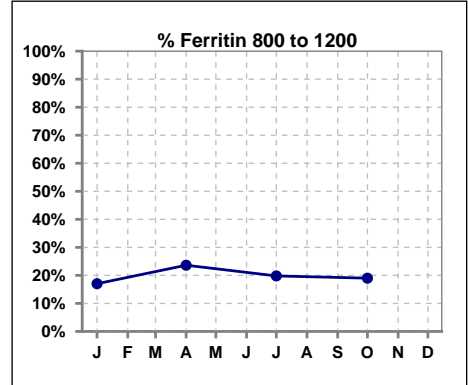
IV. ANEMIA - CONT.

Iron Profile

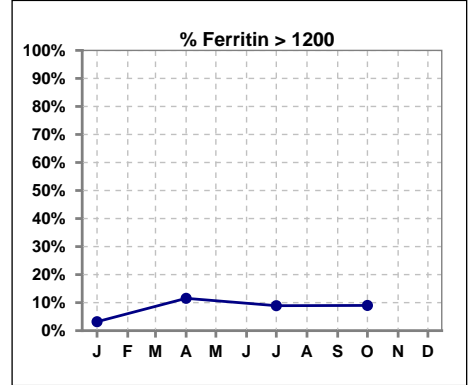
	Jan	Feb	Mar	Apr	May	Jun	Jul	Aug	Sep	Oct	Nov	Dec
# Ferritin	188			182			202			200		
# Ferritin < 800	150			118			144			144		
Pop. Mean	566			685			604			623		
Std. Deviation	331			509			428			495		
% Ferritin < 800	80%			65%			71%			72%		



	Jan	Feb	Mar	Apr	May	Jun	Jul	Aug	Sep	Oct	Nov	Dec
# Ferritin	188			182			202			200		
# Ferritin 800 to 1200	32			43			40			38		
Pop. Mean	566			685			604			623		
Std. Deviation	331			509			428			495		
% Ferritin 800 to 1200	17%			24%			20%			19%		

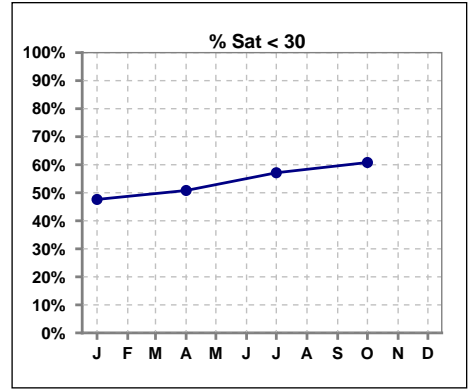


	Jan	Feb	Mar	Apr	May	Jun	Jul	Aug	Sep	Oct	Nov	Dec
# Ferritin	188			182			202			200		
# Ferritin > 1200	6			21			18			18		
Pop. Mean	566			685			604			623		
Std. Deviation	331			509			428			495		
% Ferritin > 1200	3%			12%			9%			9%		

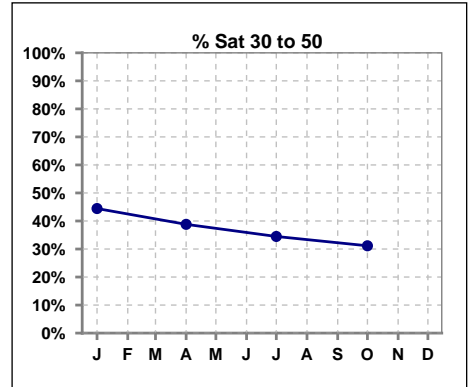


IV. ANEMIA - CONT.

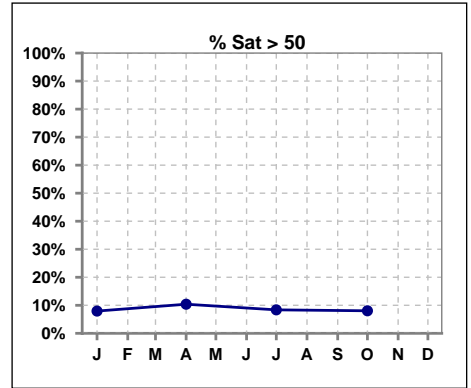
	Jan	Feb	Mar	Apr	May	Jun	Jul	Aug	Sep	Oct	Nov	Dec
# % Sat	189			183			203			199		
# % Sat < 30	90			93			116			121		
Pop. Mean	33			32			31			30		
Std. Deviation	15			16			16			15		
% % Sat < 30	48%			51%			57%			61%		



	Jan	Feb	Mar	Apr	May	Jun	Jul	Aug	Sep	Oct	Nov	Dec
# % Sat	189			183			203			199		
# % Sat 30 to 50	84			71			70			62		
Pop. Mean	33			32			31			30		
Std. Deviation	15			16			16			15		
% Sat% 30 to 50	44%			39%			34%			31%		



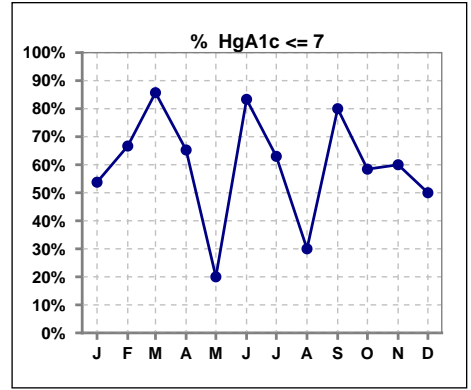
	Jan	Feb	Mar	Apr	May	Jun	Jul	Aug	Sep	Oct	Nov	Dec
# % Sat	189			183			203			199		
# % Sat > 50	15			19			17			16		
Pop. Mean	33			32			31			30		
Std. Deviation	15			16			16			15		
% Sat% > 50	8%			10%			8%			8%		



Methodology: a) Kt/V, CRCL and nPNa values are 4 month rolling mean of last value for each month, all other report lab results are based on last value of month; b) BP's are average of all values for month.

V. Diabetes

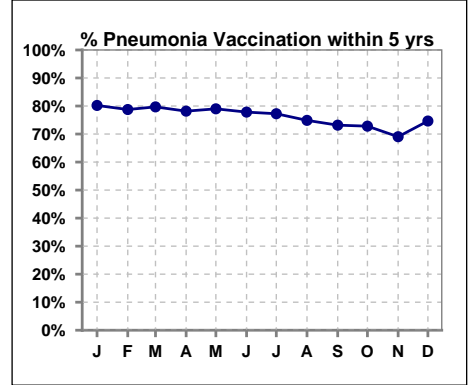
	Jan	Feb	Mar	Apr	May	Jun	Jul	Aug	Sep	Oct	Nov	Dec
# HgA1c	93	6	7	95	10	6	100	10	5	101	10	4
# HgA1c <= 7	50	4	6	62	2	5	63	3	4	59	6	2
Pop. Mean	7.1	6.7	6.3	6.9	7.9	6.2	6.8	6.9	6.2	7.0	6.6	6.8
Std. Deviation	1.48	1.59	1.01	1.35	1.80	1.08	1.28	1.54	0.95	1.40	1.12	1.43
% HgA1c <= 7	54%	67%	86%	65%	20%	83%	63%	30%	80%	58%	60%	50%



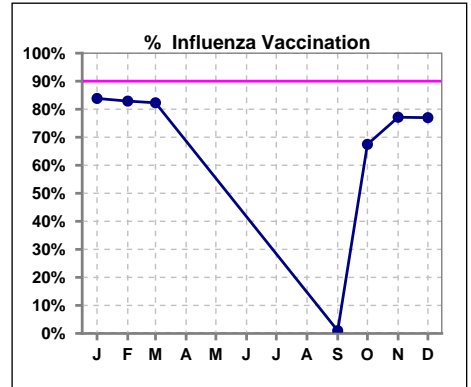
VI. Infection Control

Pneumonia vaccination within the past five years

	Jan	Feb	Mar	Apr	May	Jun	Jul	Aug	Sep	Oct	Nov	Dec
# Patient	192	193	192	197	200	203	211	211	205	206	210	213
# Pneumonia	154	152	153	154	158	158	163	158	150	150	145	159
% Pneumonia	80%	79%	80%	78%	79%	78%	77%	75%	73%	73%	69%	75%



	Jan	Feb	Mar	Apr	May	Jun	Jul	Aug	Sep	Oct	Nov	Dec
# Patient	192	193	192						205	206	210	213
# Influenza	161	160	158						2	139	162	164
% Influenza	84%	83%	82%						1%	67%	77%	77%



Exit Site Infection Rate

	Jan	Feb	Mar	Apr	May	Jun	Jul	Aug	Sep	Oct	Nov	Dec
Current Month	101.84	60.95	203.39	99.65	52.51	67.99	0	0	0	0	0	0
Rolling Year-to-date	0.07	0.08	0.09	0.09	0.10	0.11	0.03	0.03	0.03	0.02	0.04	0.05

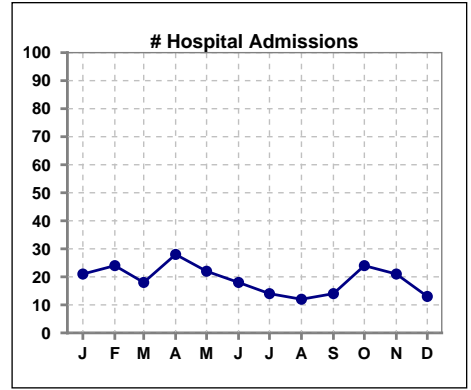
Peritonitis Infection Rate

	Jan	Feb	Mar	Apr	May	Jun	Jul	Aug	Sep	Oct	Nov	Dec
Current Month	40.74	36.57	50.85	28.47	30.00	50.99	0	0	0	0	0	0
Rolling Year-to-date	0.29	0.31	0.31	0.31	0.31	0.30	0.03	0.03	0.03	0.02	0.04	0.05

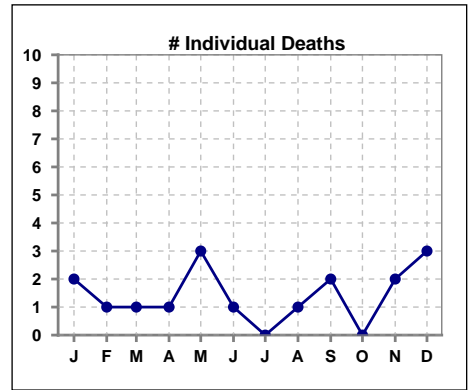
Methodology: a) Kt/V, CRCL and nPNa values are 4 month rolling mean of last value for each month, all other report lab results are based on last value of month; b) BP's are average of all values for month.

VIII. Outcome measures

	Jan	Feb	Mar	Apr	May	Jun	Jul	Aug	Sep	Oct	Nov	Dec
# Patient	192	193	192	197	200	203	211	211	205	206	210	213
# Hospital Admissions	21	24	18	28	22	18	14	12	14	24	21	13



	Jan	Feb	Mar	Apr	May	Jun	Jul	Aug	Sep	Oct	Nov	Dec
# Patient	192	193	192	197	200	203	211	211	205	206	210	213
# Individual Deaths	2	1	1	1	3	1	0	1	2	0	2	3



	Jan	Feb	Mar	Apr	May	Jun	Jul	Aug	Sep	Oct	Nov	Dec
# Patient	192	193	192	197	200	203	211	211	205	206	210	213
# Transplants	2	2	1	1	1	0	1	0	1	2	1	0

