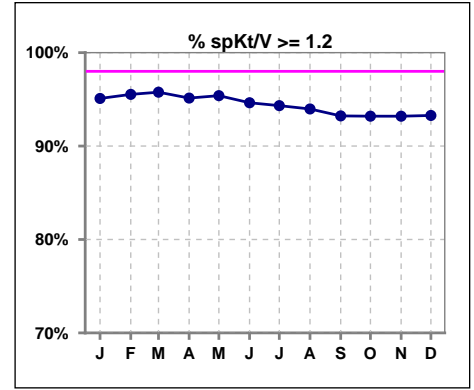
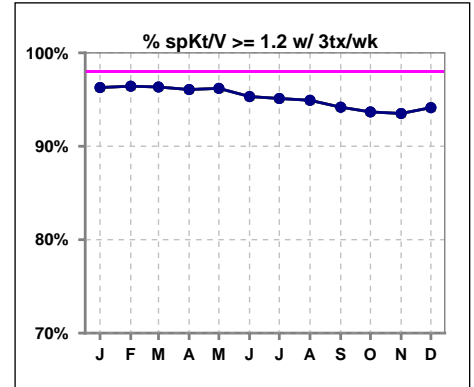


I. ADEQUACY OF DIALYSIS

	Jan	Feb	Mar	Apr	May	Jun	Jul	Aug	Sep	Oct	Nov	Dec
# spKt/V	1570	1567	1582	1583	1585	1603	1604	1625	1624	1617	1631	1606
# spKt/V >= 1.2	1493	1497	1515	1506	1512	1517	1513	1527	1514	1507	1520	1498
Pop. Mean	1.63	1.63	1.61	1.62	1.61	1.62	1.60	1.61	1.61	1.58	1.59	1.60
Std. Deviation	0.32	0.35	0.33	0.32	0.32	0.32	0.32	0.32	0.34	0.32	0.33	0.33
% spKt/V >= 1.2	95%	96%	96%	95%	95%	95%	94%	94%	93%	93%	93%	93%

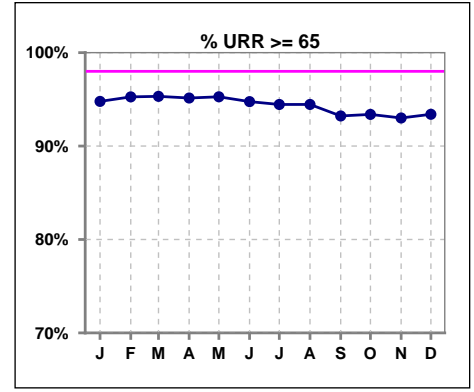


	Jan	Feb	Mar	Apr	May	Jun	Jul	Aug	Sep	Oct	Nov	Dec
# spKt/V w/ 3tx/wk	1454	1456	1476	1477	1472	1496	1494	1516	1512	1502	1509	1483
# spKt/V >= 1.2 w/3tx/wk	400	1404	1422	1419	1416	1426	1421	1439	1424	1407	1411	1396
Pop. Mean	1.64	1.64	1.62	1.64	1.63	1.63	1.61	1.62	1.62	1.59	1.60	1.61
Std. Deviation	0.31	0.35	0.33	0.32	0.31	0.32	0.31	0.31	0.33	0.32	0.32	0.33
% >= 1.2 w/3tx/wk	96%	96%	96%	96%	96%	95%	95%	95%	94%	94%	94%	94%

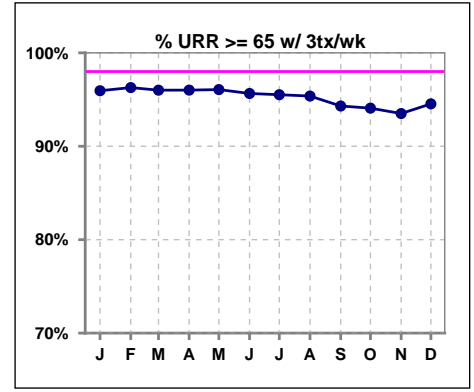


I. ADEQUACY OF DIALYSIS - CONT.

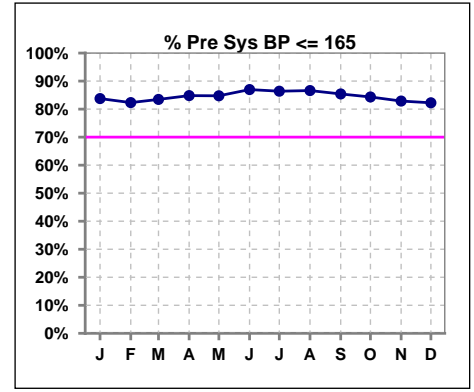
	Jan	Feb	Mar	Apr	May	Jun	Jul	Aug	Sep	Oct	Nov	Dec
# URR	1571	1563	1582	1585	1587	1602	1604	1623	1623	1618	1630	1606
# URR >= 65	1489	1489	1508	1508	1512	1518	1515	1533	1513	1511	1516	1500
Pop. Mean	75	75	74	75	74	75	74	74	74	74	74	74
Std. Deviation	6.72	6.78	6.73	6.61	6.74	6.68	6.93	6.98	7.18	6.96	7.09	7.46
% URR >= 65	95%	95%	95%	95%	95%	95%	94%	94%	93%	93%	93%	93%



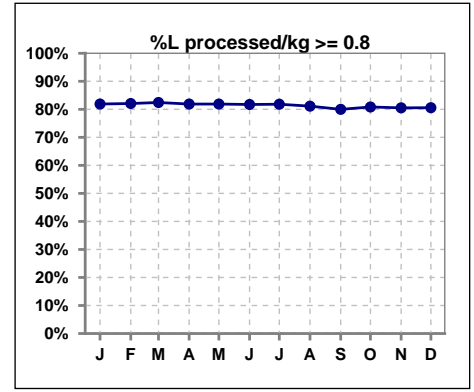
	Jan	Feb	Mar	Apr	May	Jun	Jul	Aug	Sep	Oct	Nov	Dec
# URR w/ 3tx/wk	1455	1452	1476	1479	1474	1495	1495	1513	1511	1503	1508	1483
# URR>=65 w/ 3tx/wk	1396	1398	1417	1420	1416	1430	1428	1443	1425	1414	1410	1402
Pop. Mean	75	75	75	75	75	75	75	75	75	74	74	74
Std. Deviation	6.40	6.52	6.59	6.41	6.29	6.41	6.63	6.76	6.69	6.89	6.85	7.24
% URR>=65 w/ 3tx/wk	96%	96%	96%	96%	96%	96%	96%	95%	94%	94%	94%	95%



	Jan	Feb	Mar	Apr	May	Jun	Jul	Aug	Sep	Oct	Nov	Dec
# Pre Sys BP	1589	1573	1590	1594	1600	1613	1617	1637	1645	1634	1647	1634
# Pre Sys BP <= 165	1353	1306	1347	1369	1375	1418	1416	1444	1430	1395	1381	1363
Pop. Mean	145	146	145	144	144	142	143	143	144	145	145	146
Std. Deviation	20.3	20.3	19.8	19.7	19.6	19.5	19.3	19.4	19.4	19.3	19.9	19.9
%Pre Sys BP <=165	84%	82%	83%	85%	85%	87%	86%	87%	85%	84%	83%	82%



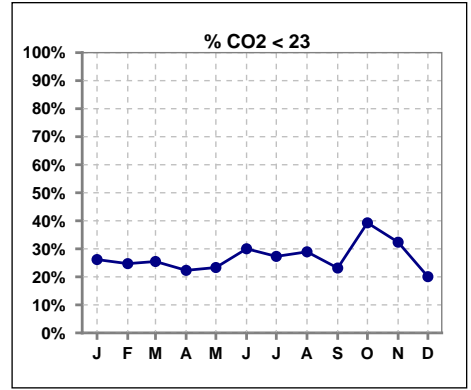
	Jan	Feb	Mar	Apr	May	Jun	Jul	Aug	Sep	Oct	Nov	Dec
# L processed/kg	1579	1567	1583	1595	1600	1614	1617	1637	1644	1633	1643	1632
# L processed/kg>=0.8	1293	1286	1305	1306	1310	1319	1323	1328	1315	1320	1323	1315
Pop. Mean	1	1	1	1	1	1	1	1	1	1	1	1
Std. Deviation	0.3	0.3	0.3	0.3	0.3	0.3	0.3	0.3	0.3	0.8	0.3	0.3
% L processed/kg>=0.8	82%	82%	82%	82%	82%	82%	82%	81%	80%	81%	81%	81%



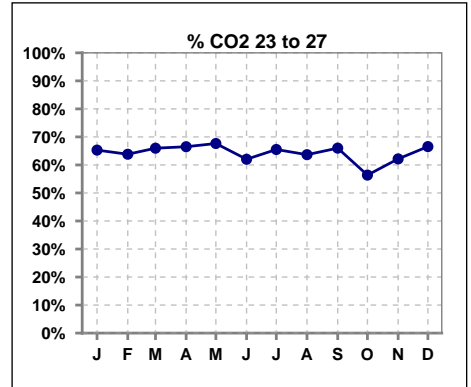
Methodology: a) All labs for 'Adequacy of Dialysis', 'Nutrition', 'Osteodystrophy', 'Anemia' and 'Diabetes' based on last value of month; b) BP's and #L processed are average of all values for month; c) Access data takes last access of month; d) Values for SGA and 'Infection Control' use most recent result.

I. ADEQUACY OF DIALYSIS - CONT.

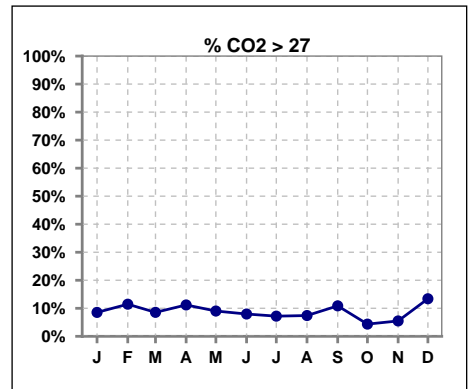
	Jan	Feb	Mar	Apr	May	Jun	Jul	Aug	Sep	Oct	Nov	Dec
# CO2	1582	1570	1590	1591	1595	1609	1612	1632	1638	1630	1641	1620
# CO2 < 23	414	388	405	355	372	483	440	472	379	640	531	325
Pop. Mean	24	24	24	24	24	24	24	24	24	23	23	25
Std. Deviation	2.72	2.98	2.87	2.87	2.80	2.87	2.79	2.77	2.85	2.70	2.74	2.88
% CO2 < 23	26%	25%	25%	22%	23%	30%	27%	29%	23%	39%	32%	20%



	Jan	Feb	Mar	Apr	May	Jun	Jul	Aug	Sep	Oct	Nov	Dec
# CO2	1582	1570	1590	1591	1595	1609	1612	1632	1638	1630	1641	1620
# CO2 23 to 27	1033	1002	1049	1058	1079	998	1056	1039	1081	919	1020	1078
Pop. Mean	24	24	24	24	24	24	24	24	24	23	23	25
Std. Deviation	2.72	2.98	2.87	2.87	2.80	2.87	2.79	2.77	2.85	2.70	2.74	2.88
% CO2 23 to 27	65%	64%	66%	66%	68%	62%	66%	64%	66%	56%	62%	67%



	Jan	Feb	Mar	Apr	May	Jun	Jul	Aug	Sep	Oct	Nov	Dec
# CO2	1582	1570	1590	1591	1595	1609	1612	1632	1638	1630	1641	1620
# CO2 > 27	135	180	136	178	144	128	116	121	178	71	90	217
Pop. Mean	24	24	24	24	24	24	24	24	24	23	23	25
Std. Deviation	2.72	2.98	2.87	2.87	2.80	2.87	2.79	2.77	2.85	2.70	2.74	2.88
% CO2 > 27	9%	11%	9%	11%	9%	8%	7%	7%	11%	4%	5%	13%

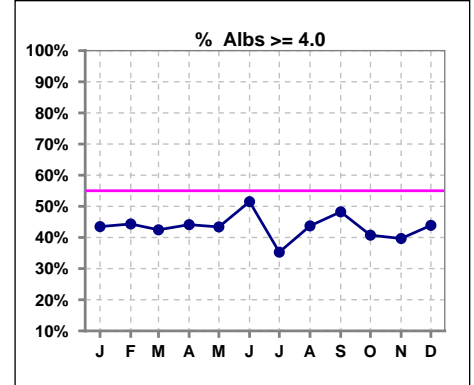


Methodology: a) All labs for 'Adequacy of Dialysis', 'Nutrition', 'Osteodystrophy', 'Anemia' and 'Diabetes' based on last value of month; b) BP's and #L processed are average of all values for month; c) Access data takes last access of month; d) Values for SGA and 'Infection Control' use most recent result.

*Albumin values use BCG method - as of July 2001

II. NUTRITION

	Jan	Feb	Mar	Apr	May	Jun	Jul	Aug	Sep	Oct	Nov	Dec
# Albumin	1582	1570	1590	1591	1595	1610	1613	1631	1638	1630	1641	1620
# Albumin >= 4.0	688	696	675	702	692	829	569	713	790	664	651	711
Pop. Mean	3.8	3.9	3.8	3.9	3.8	3.9	3.8	3.8	3.9	3.8	3.8	3.8
Std. Deviation	0.41	0.41	0.41	0.41	0.40	0.42	0.38	0.41	0.42	0.42	0.43	0.42
% Alb >= 4.0	43%	44%	42%	44%	43%	51%	35%	44%	48%	41%	40%	44%

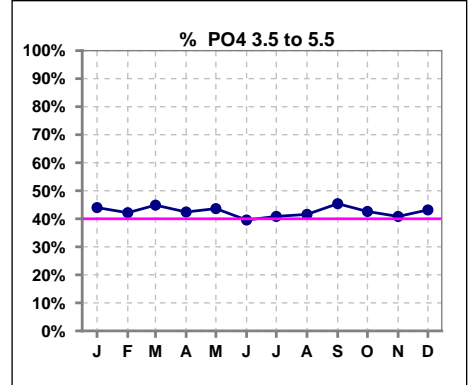


Methodology: a) All labs for 'Adequacy of Dialysis', 'Nutrition', 'Osteodystrophy', 'Anemia' and 'Diabetes' based on last value of month; b) BP's and #L processed are average of all values for month; c) Access data takes last access of month; d) Values for SGA and 'Infection Control' use most recent result.

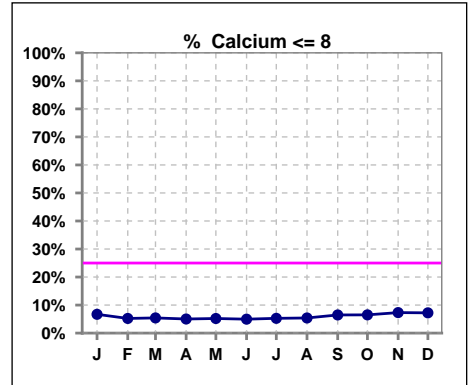
Lab methodology for PTH changed January 2012

III. OSTEODYSTROPHY

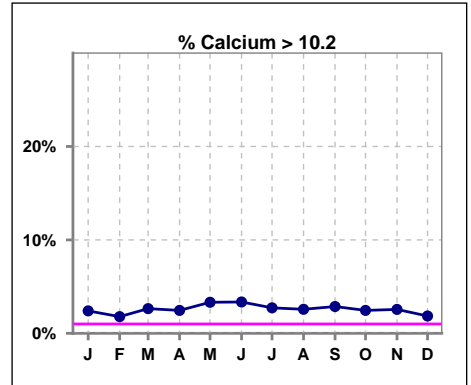
	Jan	Feb	Mar	Apr	May	Jun	Jul	Aug	Sep	Oct	Nov	Dec
# PO4	1582	1570	1589	1591	1595	1610	1613	1631	1637	1631	1641	1617
# PO4 3.5 to 5.5	696	662	713	675	696	637	659	678	743	695	670	698
Pop. Mean	5.8	5.8	5.9	5.9	5.8	6.0	5.9	5.9	5.8	5.8	6.0	5.9
Std. Deviation	1.85	1.86	1.86	1.86	1.78	1.89	1.86	1.94	1.92	1.86	1.92	1.97
% PO4 3.5 to 5.5	44%	42%	45%	42%	44%	40%	41%	42%	45%	43%	41%	43%



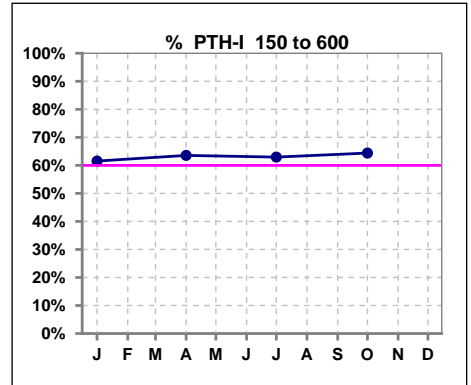
	Jan	Feb	Mar	Apr	May	Jun	Jul	Aug	Sep	Oct	Nov	Dec
# Calcium	1583	1570	1590	1591	1595	1610	1613	1633	1638	1631	1641	1620
# Calcium <= 8	106	82	86	80	83	80	85	88	106	106	120	117
Pop. Mean	9.1	9.2	9.2	9.2	9.2	9.3	9.2	9.2	9.2	9.1	9.1	9.2
Std. Deviation	0.70	0.66	0.67	0.67	0.71	0.68	0.69	0.69	0.72	0.69	0.71	0.70
% Calcium <= 8	7%	5%	5%	5%	5%	5%	5%	5%	6%	6%	7%	7%



	Jan	Feb	Mar	Apr	May	Jun	Jul	Aug	Sep	Oct	Nov	Dec
# Calcium	1583	1570	1590	1591	1595	1610	1613	1633	1638	1631	1641	1620
# Calcium > 10.2	38	28	42	39	53	54	44	42	47	40	42	30
Pop. Mean	9.1	9.2	9.2	9.2	9.2	9.3	9.2	9.2	9.2	9.1	9.1	9.2
Std. Deviation	0.70	0.66	0.67	0.67	0.71	0.68	0.69	0.69	0.72	0.69	0.71	0.70
% Calcium > 10.2	2%	2%	3%	2%	3%	3%	3%	3%	3%	2%	3%	2%



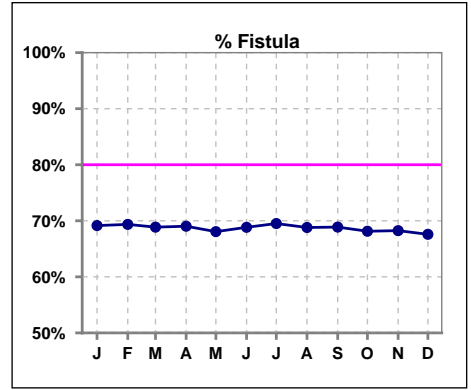
	Jan	Feb	Mar	Apr	May	Jun	Jul	Aug	Sep	Oct	Nov	Dec
# PTH-I	1578			1583			1606			1615		
# PTH-I 150 to 600	971			1006			1011			1040		
Pop. Mean	478			449			425			491		
Std. Deviation	458			432			429			482		
% PTH-I 150 to 600	62%			64%			63%			64%		



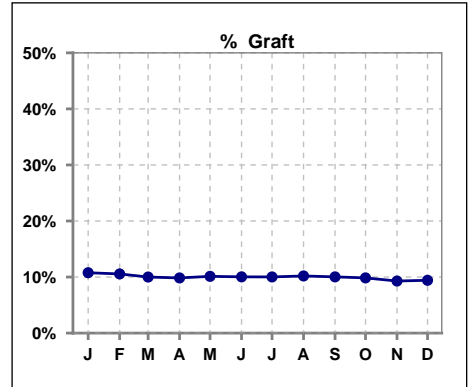
Methodology: a) All labs for 'Adequacy of Dialysis', 'Nutrition', 'Osteodystrophy', 'Anemia' and 'Diabetes' based on last value of month; b) BP's and #L processed are average of all values for month; c) Access data takes last access of month; d) Values for SGA and 'Infection Control' use most recent result.

IV. ACCESS

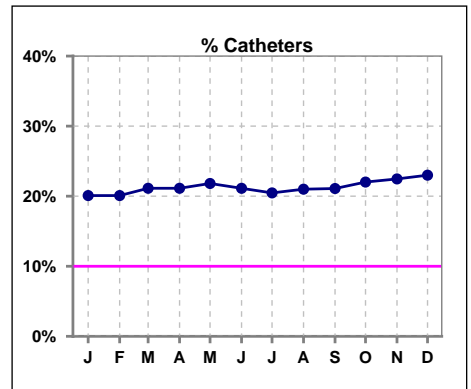
	Jan	Feb	Mar	Apr	May	Jun	Jul	Aug	Sep	Oct	Nov	Dec
# Access	1588	1573	1590	1595	1600	1614	1617	1638	1645	1635	1647	1635
# Fistula	1098	1091	1095	1101	1089	1111	1124	1127	1133	1114	1124	1105
% Fistula	69%	69%	69%	69%	68%	69%	70%	69%	69%	68%	68%	68%



	Jan	Feb	Mar	Apr	May	Jun	Jul	Aug	Sep	Oct	Nov	Dec
# Access	1588	1573	1590	1595	1600	1614	1617	1638	1645	1635	1647	1635
# Graft	171	166	159	157	162	162	162	167	165	161	153	154
% Graft	11%	11%	10%	10%	10%	10%	10%	10%	10%	10%	9%	9%



	Jan	Feb	Mar	Apr	May	Jun	Jul	Aug	Sep	Oct	Nov	Dec
# Access	1588	1573	1590	1595	1600	1614	1617	1638	1645	1635	1647	1635
# Catheters	319	316	336	337	349	341	331	344	347	360	370	376
% Catheters	20%	20%	21%	21%	22%	21%	20%	21%	21%	22%	22%	23%



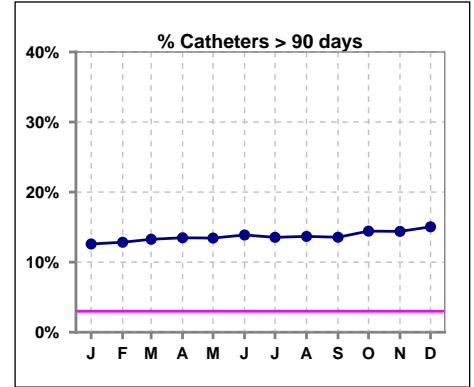
Methodology: a) All labs for 'Adequacy of Dialysis', 'Nutrition', 'Osteodystrophy', 'Anemia' and 'Diabetes' based on last value of month; b) BP's and #L processed are average of all values for month; c) Access data takes last access of month; d) Values for SGA and 'Infection Control' use most recent result.

IV. ACCESS - CONT.

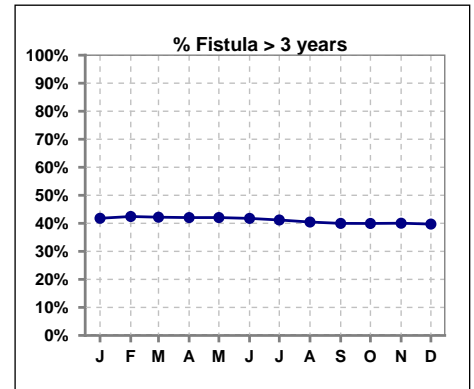
Catheters > 90 days

	Jan	Feb	Mar	Apr	May	Jun	Jul	Aug	Sep	Oct	Nov	Dec
# Access	1588	1573	1590	1595	1600	1614	1617	1638	1645	1635	1647	1635
# Catheters	200	202	211	215	215	224	219	224	223	236	237	246
% Catheters	13%	13%	13%	13%	13%	14%	14%	14%	14%	14%	14%	15%

Definition: Catheter in use on last treatment of the month



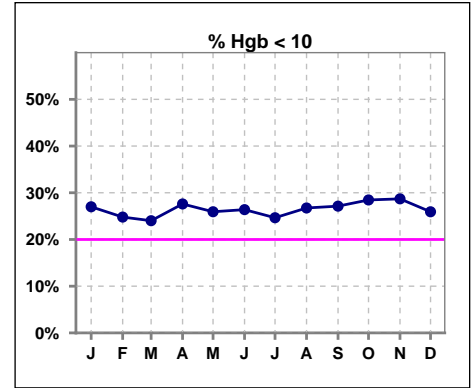
	Jan	Feb	Mar	Apr	May	Jun	Jul	Aug	Sep	Oct	Nov	Dec
# Fistula	1098	1091	1095	1101	1089	1111	1124	1127	1133	1114	1124	1105
# Fistula > 3 yrs	459	463	462	463	458	464	463	456	453	445	450	439
% Fistula > 3 yrs	42%	42%	42%	42%	42%	42%	41%	40%	40%	40%	40%	40%



V. ANEMIA

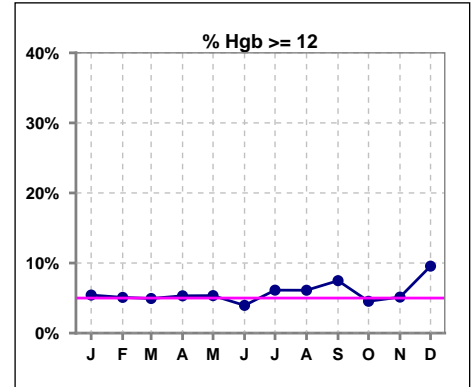
	Jan	Feb	Mar	Apr	May	Jun	Jul	Aug	Sep	Oct	Nov	Dec
# Hgb	1400	1335	1378	1391	1365	1391	1436	1406	1430	1409	1401	1423
# Hgb < 10	378	331	331	384	354	367	354	376	388	401	402	369
Pop. Mean	10.5	10.6	10.6	10.5	10.5	10.5	10.6	10.5	10.5	10.4	10.5	10.6
Std. Deviation	1.3	1.2	1.2	1.2	1.3	1.2	1.2	1.3	1.3	1.3	1.3	1.3
% Hgb < 10	27%	25%	24%	28%	26%	26%	25%	27%	27%	28%	29%	26%

Note: Excludes patients who received no ESA in month.



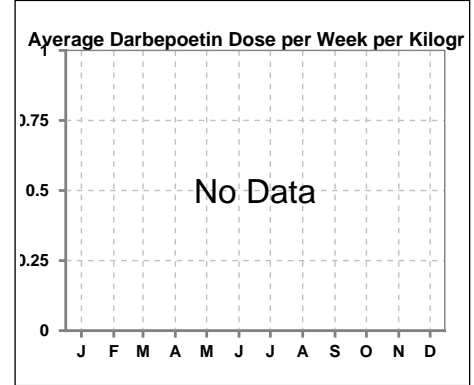
	Jan	Feb	Mar	Apr	May	Jun	Jul	Aug	Sep	Oct	Nov	Dec
# Hgb	1400	1335	1378	1391	1365	1391	1436	1406	1430	1409	1401	1423
# Hgb >= 12	76	68	68	74	73	55	88	86	107	64	72	136
Pop. Mean	10.5	10.6	10.6	10.5	10.5	10.5	10.6	10.5	10.5	10.4	10.5	10.6
Std. Deviation	1.3	1.2	1.2	1.2	1.3	1.2	1.2	1.3	1.3	1.3	1.3	1.3
% Hgb >= 12	5%	5%	5%	5%	5%	4%	6%	6%	7%	5%	5%	10%

Note: Excludes patients who received no ESA in month.



Average Darbepoetin Dose per Week per Kilogram

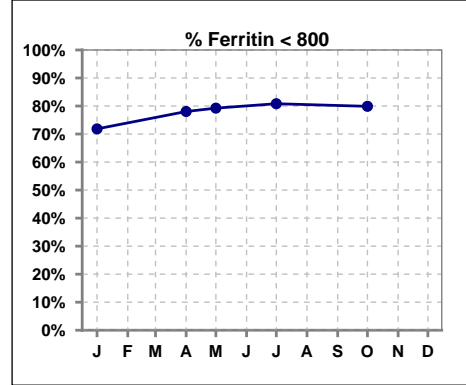
	Jan	Feb	Mar	Apr	May	Jun	Jul	Aug	Sep	Oct	Nov	Dec
# Average Darbepoetin												



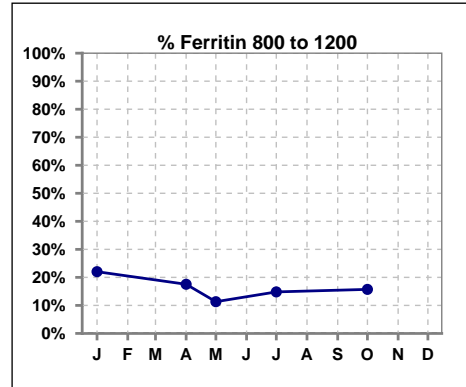
V. ANEMIA - CONT.

Iron Profile

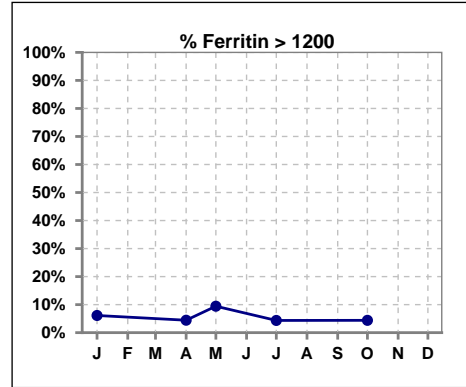
	Jan	Feb	Mar	Apr	May	Jun	Jul	Aug	Sep	Oct	Nov	Dec
# Ferritin	1584			1580	106		1606			1616		
# Ferritin < 800	1138			1233	84		1298			1291		
Pop. Mean	617			548	583		527			528		
Std. Deviation	523			399	772		440			453		
% Ferritin < 800	72%			78%	79%		81%			80%		



	Jan	Feb	Mar	Apr	May	Jun	Jul	Aug	Sep	Oct	Nov	Dec
# Ferritin	1584			1580	106		1606			1616		
# Ferritin 800 to 1200	349			277	12		238			254		
Pop. Mean	617			548	583		527			528		
Std. Deviation	523			399	772		440			453		
% Ferritin 800 to 1200	22%			18%	11%		15%			16%		

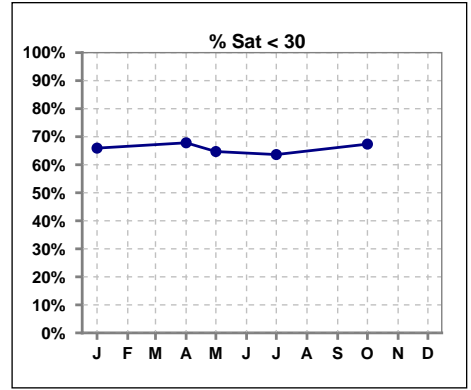


	Jan	Feb	Mar	Apr	May	Jun	Jul	Aug	Sep	Oct	Nov	Dec
# Ferritin	1584			1580	106		1606			1616		
# Ferritin > 1200	97			70	10		70			71		
Pop. Mean	617			548	583		527			528		
Std. Deviation	523			399	772		440			453		
% Ferritin > 1200	6%			4%	9%		4%			4%		

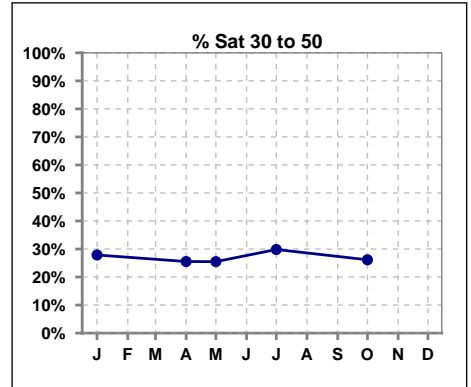


V. ANEMIA - CONT.

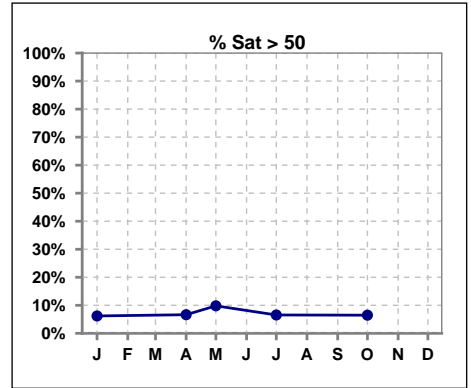
	Jan	Feb	Mar	Apr	May	Jun	Jul	Aug	Sep	Oct	Nov	Dec
# % Sat	1582			1582	153		1606			1621		
# % Sat < 30	1043			1073	99		1022			1092		
Pop. Mean	28			28	28		28			27		
Std. Deviation	15			16	16		15			14		
% % Sat < 30	66%			68%	65%		64%			67%		



	Jan	Feb	Mar	Apr	May	Jun	Jul	Aug	Sep	Oct	Nov	Dec
# % Sat	1582			1582	153		1606			1621		
# % Sat 30 to 50	441			404	39		479			424		
Pop. Mean	28			28	28		28			27		
Std. Deviation	15			16	16		15			14		
% % Sat 30 to 50	28%			26%	25%		30%			26%		



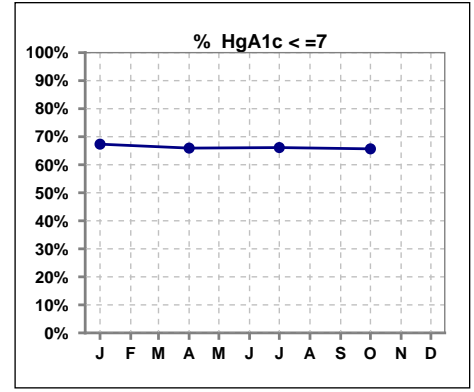
	Jan	Feb	Mar	Apr	May	Jun	Jul	Aug	Sep	Oct	Nov	Dec
# % Sat	1582			1582	153		1606			1621		
# % Sat > 50	98			105	15		105			105		
Pop. Mean	28			28	28		28			27		
Std. Deviation	15			16	16		15			14		
% % Sat > 50	6%			7%	10%		7%			6%		



Methodology: a) All labs for 'Adequacy of Dialysis', 'Nutrition', 'Osteodystrophy', 'Anemia' and 'Diabetes' based on last value of month; b) BP's and #L processed are average of all values for month; c) Access data takes last access of month; d) Values for SGA and 'Infection Control' use most recent result.

VI. Diabetes

	Jan	Feb	Mar	Apr	May	Jun	Jul	Aug	Sep	Oct	Nov	Dec
# HgA1c	940			954			983			967		
# HgA1c <= 7	633			629			650			635		
Pop. Mean	6.7			6.7			6.7			6.7		
Std. Deviation	1.49			1.47			1.45			1.46		
% HgA1c <= 7	67%			66%			66%			66%		

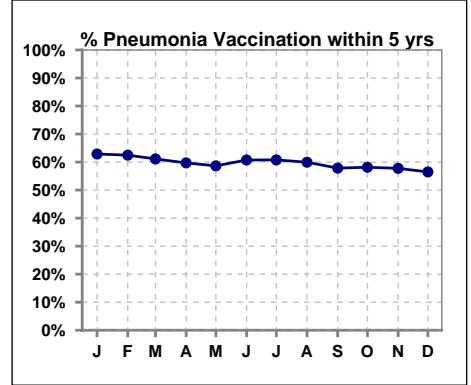


Methodology: a) All labs for 'Adequacy of Dialysis', 'Nutrition', 'Osteodystrophy', 'Anemia' and 'Diabetes' based on last value of month; b) BP's and #L processed are average of all values for month; c) Access data takes last access of month; d) Values for SGA and 'Infection Control' use most recent result.

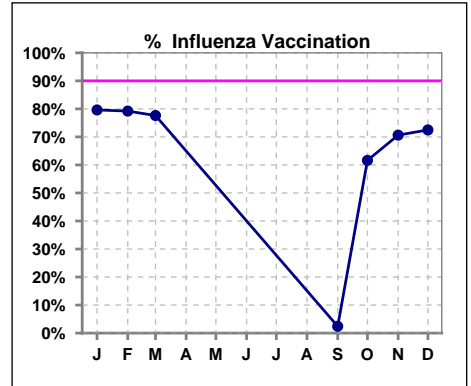
VII. Infection Control

Pneumonia vaccination within the past five years

	Jan	Feb	Mar	Apr	May	Jun	Jul	Aug	Sep	Oct	Nov	Dec
# Patient	1595	1583	1592	1598	1606	1620	1624	1643	1658	1644	1655	1643
# Pneumonia	1003	989	973	954	942	984	987	985	959	956	956	928
% Pneumonia	63%	62%	61%	60%	59%	61%	61%	60%	58%	58%	58%	56%



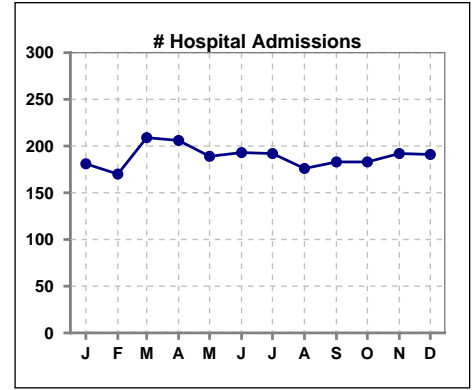
	Jan	Feb	Mar	Apr	May	Jun	Jul	Aug	Sep	Oct	Nov	Dec
# Patient	1595	1583	1592						1658	1644	1655	1643
# Influenza	1270	1254	1236						40	1013	1169	1191
% Influenza	80%	79%	78%						2%	62%	71%	72%



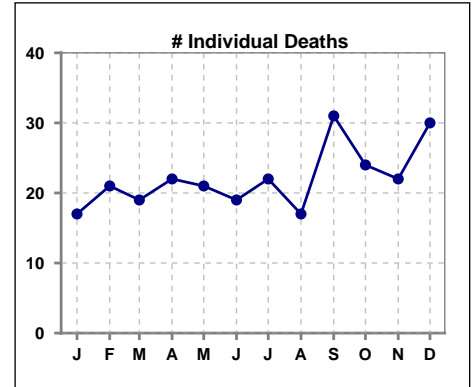
Methodology: a) All labs for 'Adequacy of Dialysis', 'Nutrition', 'Osteodystrophy', 'Anemia' and 'Diabetes' based on last value of month; b) BP's and #L processed are average of all values for month; c) Access data takes last access of month; d) Values for SGA and 'Infection Control' use most recent result.

VIII. Outcome measures

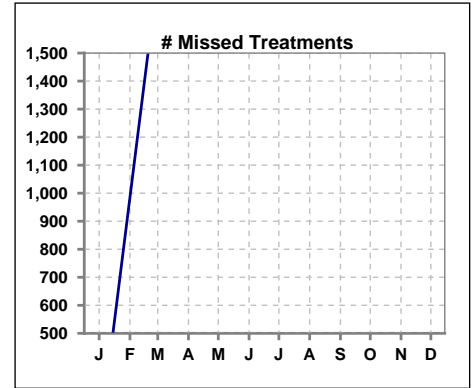
	Jan	Feb	Mar	Apr	May	Jun	Jul	Aug	Sep	Oct	Nov	Dec
# Patient	1595	1583	1592	1598	1606	1620	1624	1643	1658	1644	1655	1643
# Hospital Admissions	181	170	209	206	189	193	192	176	183	183	192	191



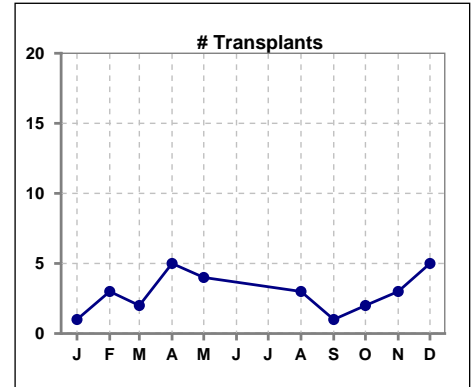
	Jan	Feb	Mar	Apr	May	Jun	Jul	Aug	Sep	Oct	Nov	Dec
# Patient	1595	1583	1592	1598	1606	1620	1624	1643	1658	1644	1655	1643
# Individual Deaths	17	21	19	22	21	19	22	17	31	24	22	30



	Jan	Feb	Mar	Apr	May	Jun	Jul	Aug	Sep	Oct	Nov	Dec
# Patient	1595	1583	1592	1598	1606	1620	1624	1643	1658	1644	1655	1643
# Missed Treatments	108		1777	1650	1719	1781	1836	1730	1878	1993	2069	2498



	Jan	Feb	Mar	Apr	May	Jun	Jul	Aug	Sep	Oct	Nov	Dec
# Patient	1595	1583	1592	1598	1606	1620	1624	1643	1658	1644	1655	1643
# Transplants	1	3	2	5	4			3	1	2	3	5



Methodology: a) All labs for 'Adequacy of Dialysis', 'Nutrition', 'Osteodystrophy', 'Anemia' and 'Diabetes' based on last value of month; b) BP's and #L processed are average of all values for month; c) Access data takes last access of month; d) Values for SGA and 'Infection Control' use most recent result.