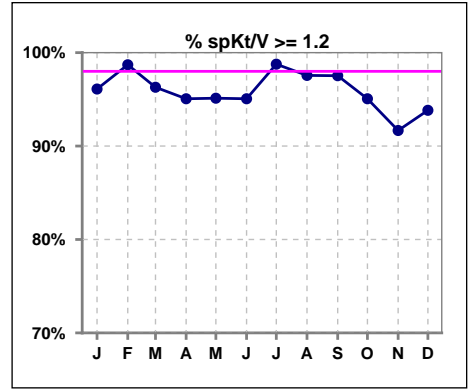
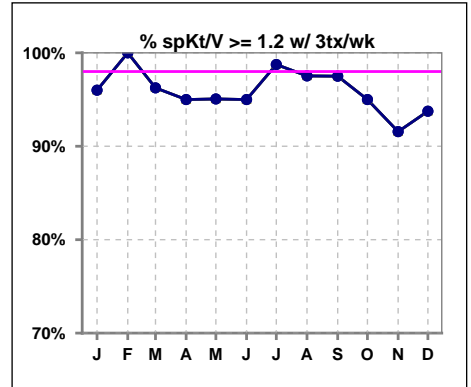


I. ADEQUACY OF DIALYSIS

	Jan	Feb	Mar	Apr	May	Jun	Jul	Aug	Sep	Oct	Nov	Dec
# spKt/V	77	77	81	81	82	81	81	82	81	81	84	81
# spKt/V >= 1.2	74	76	78	77	78	77	80	80	79	77	77	76
Pop. Mean	1.66	1.67	1.65	1.65	1.63	1.65	1.64	1.60	1.61	1.56	1.54	1.55
Std. Deviation	0.33	0.34	0.34	0.35	0.31	0.35	0.35	0.34	0.28	0.32	0.31	0.35
% spKt/V >= 1.2	96%	99%	96%	95%	95%	95%	99%	98%	98%	95%	92%	94%

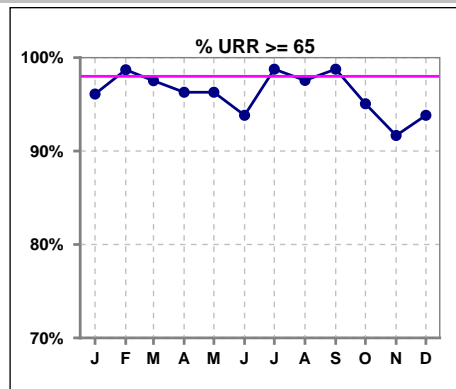


	Jan	Feb	Mar	Apr	May	Jun	Jul	Aug	Sep	Oct	Nov	Dec
# spKt/V w/ 3tx/wk	75	75	80	80	81	80	80	81	80	80	83	80
# spKt/V >= 1.2 w/3tx/wk	72	75	77	76	77	76	79	79	78	76	76	75
Pop. Mean	1.65	1.68	1.65	1.66	1.63	1.65	1.64	1.60	1.61	1.56	1.54	1.55
Std. Deviation	0.32	0.34	0.34	0.35	0.31	0.35	0.35	0.34	0.28	0.33	0.31	0.35
% >= 1.2 w/3tx/wk	96%	100%	96%	95%	95%	95%	99%	98%	98%	95%	92%	94%

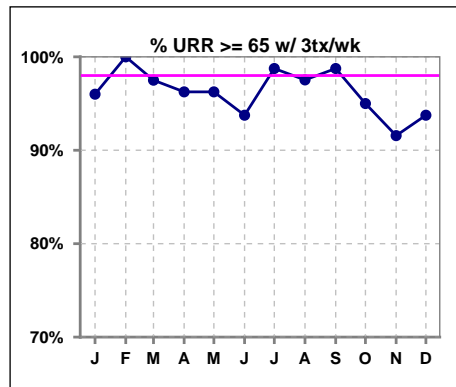


I. ADEQUACY OF DIALYSIS - CONT.

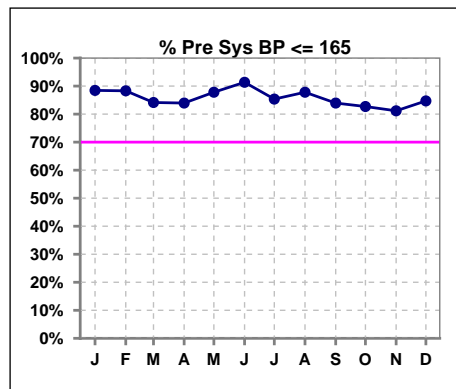
	Jan	Feb	Mar	Apr	May	Jun	Jul	Aug	Sep	Oct	Nov	Dec
# URR	77	77	81	81	81	81	81	82	81	81	84	81
# URR >= 65	74	76	79	78	78	76	80	80	80	77	77	76
Pop. Mean	76	76	75	75	75	75	75	74	74	73	73	73
Std. Deviation	6.08	5.93	6.34	6.40	5.96	7.10	7.40	8.04	5.57	6.60	7.72	6.94
% URR >= 65	96%	99%	98%	96%	96%	94%	99%	98%	99%	95%	92%	94%



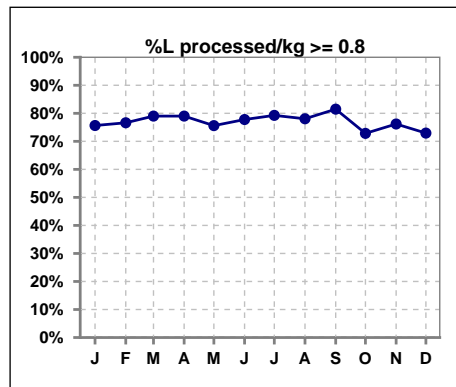
	Jan	Feb	Mar	Apr	May	Jun	Jul	Aug	Sep	Oct	Nov	Dec
# URR w/ 3tx/wk	75	75	80	80	80	80	80	81	80	80	83	80
# URR>=65 w/ 3tx/wk	72	75	78	77	77	75	79	79	79	76	76	75
Pop. Mean	76	76	75	75	75	75	75	74	74	73	73	73
Std. Deviation	6.02	5.79	6.38	6.43	6.00	7.14	7.44	8.08	5.61	6.62	7.73	6.96
% URR>=65 w/ 3tx/wk	96%	100%	98%	96%	96%	94%	99%	98%	99%	95%	92%	94%



	Jan	Feb	Mar	Apr	May	Jun	Jul	Aug	Sep	Oct	Nov	Dec
# Pre Sys BP	78	77	82	81	82	81	82	82	81	81	85	85
# Pre Sys BP <= 165	71	68	70	70	73	74	71	74	70	68	69	72
Pop. Mean	145	143	144	143	143	142	145	145	148	147	148	146
Std. Deviation	18.0	18.3	18.0	20.3	18.1	17.2	17.8	17.1	17.2	18.1	18.4	19.3
% Pre Sys BP <=165	88%	88%	84%	84%	88%	91%	85%	88%	84%	83%	81%	85%



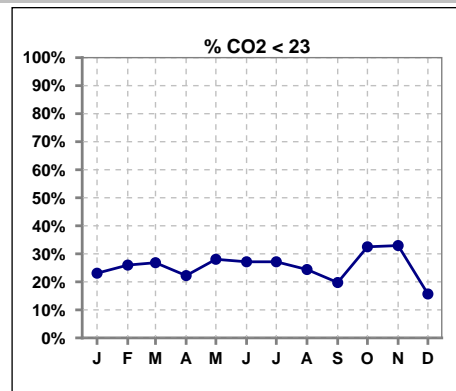
	Jan	Feb	Mar	Apr	May	Jun	Jul	Aug	Sep	Oct	Nov	Dec
# L processed/kg	78	77	81	81	82	81	82	82	81	81	84	85
# L processed/kg>=0.8	59	59	64	64	62	63	65	64	66	59	64	62
Pop. Mean	1	1	1	1	1	1	1	1	1	1	1	1
Std. Deviation	0.3	0.3	0.3	0.3	0.3	0.3	0.3	0.3	0.3	0.3	0.3	0.3
% L processed/kg>=0.8	76%	77%	79%	79%	76%	78%	79%	78%	81%	73%	76%	73%



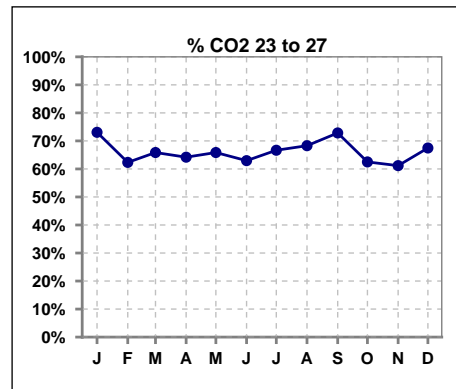
Methodology: a) All labs for 'Adequacy of Dialysis', 'Nutrition', 'Osteodystrophy', 'Anemia' and 'Diabetes' based on last value of month; b) BP's and #L processed are average of all values for month; c) Access data takes last access of month; d) Values for SGA and 'Infection Control' use most recent result.

I. ADEQUACY OF DIALYSIS - CONT.

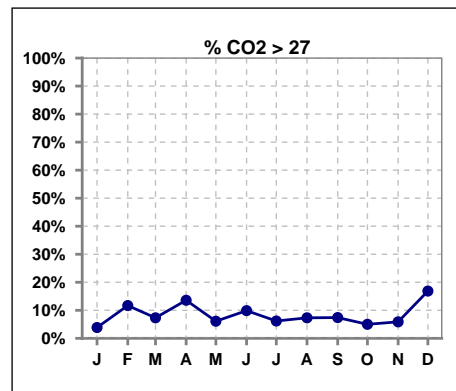
	Jan	Feb	Mar	Apr	May	Jun	Jul	Aug	Sep	Oct	Nov	Dec
# CO2	78	77	82	81	82	81	81	82	81	80	85	83
# CO2 < 23	18	20	22	18	23	22	22	20	16	26	28	13
Pop. Mean	24	24	24	24	24	24	24	24	24	24	23	25
Std. Deviation	2.34	2.89	2.94	2.80	2.50	2.73	2.89	2.62	2.41	2.79	3.38	2.88
% CO2 < 23	23%	26%	27%	22%	28%	27%	27%	24%	20%	33%	33%	16%



	Jan	Feb	Mar	Apr	May	Jun	Jul	Aug	Sep	Oct	Nov	Dec
# CO2	78	77	82	81	82	81	81	82	81	80	85	83
# CO2 23 to 27	57	48	54	52	54	51	54	56	59	50	52	56
Pop. Mean	24	24	24	24	24	24	24	24	24	24	23	25
Std. Deviation	2.34	2.89	2.94	2.80	2.50	2.73	2.89	2.62	2.41	2.79	3.38	2.88
% CO2 23 to 27	73%	62%	66%	64%	66%	63%	67%	68%	73%	63%	61%	67%



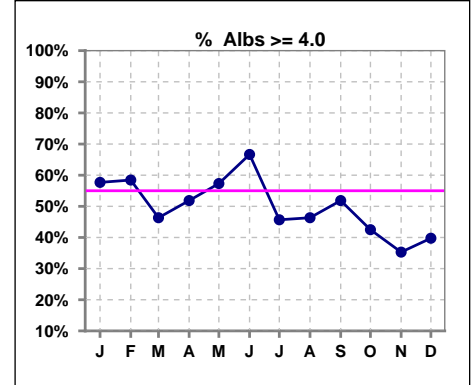
	Jan	Feb	Mar	Apr	May	Jun	Jul	Aug	Sep	Oct	Nov	Dec
# CO2	78	77	82	81	82	81	81	82	81	80	85	83
# CO2 > 27	3	9	6	11	5	8	5	6	6	4	5	14
Pop. Mean	24	24	24	24	24	24	24	24	24	24	23	25
Std. Deviation	2.34	2.89	2.94	2.80	2.50	2.73	2.89	2.62	2.41	2.79	3.38	2.88
% CO2 > 27	4%	12%	7%	14%	6%	10%	6%	7%	7%	5%	6%	17%



*Albumin values use BCG method - as of July 2001

II. NUTRITION

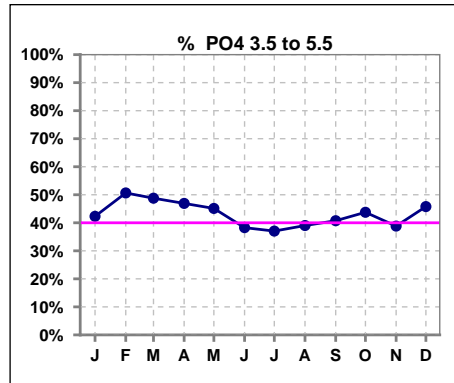
	Jan	Feb	Mar	Apr	May	Jun	Jul	Aug	Sep	Oct	Nov	Dec
# Albumin	78	77	82	81	82	81	81	82	81	80	85	83
# Albumin >= 4.0	45	45	38	42	47	54	37	38	42	34	30	33
Pop. Mean	4.0	3.9	3.9	3.9	4.0	4.0	3.8	3.9	3.9	3.8	3.8	3.8
Std. Deviation	0.35	0.35	0.36	0.39	0.37	0.41	0.35	0.35	0.40	0.40	0.41	0.41
% Alb >= 4.0	58%	58%	46%	52%	57%	67%	46%	46%	52%	43%	35%	40%



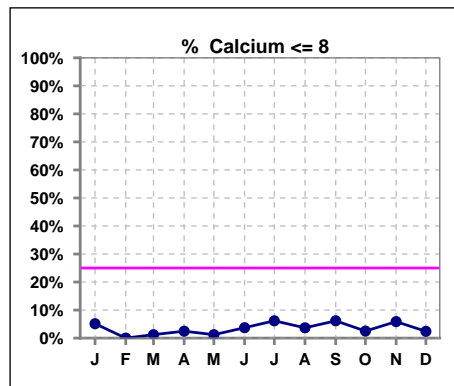
Lab methodology for PTH changed January 2012

III. OSTEODYSTROPHY

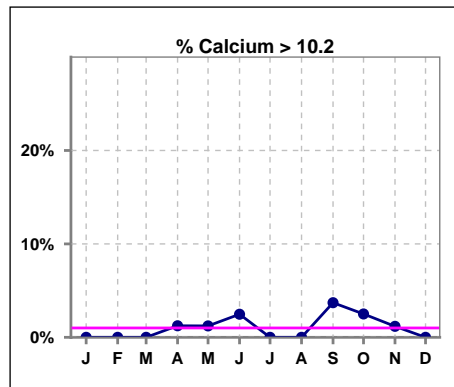
	Jan	Feb	Mar	Apr	May	Jun	Jul	Aug	Sep	Oct	Nov	Dec
# PO4	78	77	82	81	82	81	81	82	81	80	85	83
# PO4 3.5 to 5.5	33	39	40	38	37	31	30	32	33	35	33	38
Pop. Mean	5.8	5.6	5.5	5.7	5.7	5.9	6.0	5.8	5.9	5.5	6.0	5.4
Std. Deviation	1.58	1.68	1.75	1.87	1.64	1.74	1.92	1.78	1.85	1.86	2.22	1.72
% PO4 3.5 to 5.5	42%	51%	49%	47%	45%	38%	37%	39%	41%	44%	39%	46%



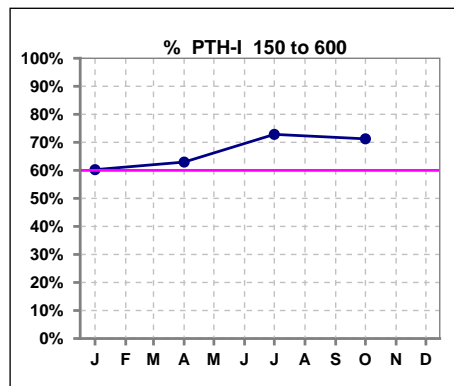
	Jan	Feb	Mar	Apr	May	Jun	Jul	Aug	Sep	Oct	Nov	Dec
# Calcium	78	77	82	81	82	81	81	82	81	80	85	83
# Calcium <= 8	4	0	1	2	1	3	5	3	5	2	5	2
Pop. Mean	9.1	9.3	9.2	9.2	9.2	9.3	9.1	9.2	9.3	9.1	9.1	9.2
Std. Deviation	0.58	0.47	0.50	0.55	0.47	0.60	0.64	0.55	0.69	0.62	0.67	0.56
% Calcium <= 8	5%	0%	1%	2%	1%	4%	6%	4%	6%	3%	6%	2%



	Jan	Feb	Mar	Apr	May	Jun	Jul	Aug	Sep	Oct	Nov	Dec
# Calcium	78	77	82	81	82	81	81	82	81	80	85	83
# Calcium > 10.2	0	0	0	1	1	2	0	0	3	2	1	0
Pop. Mean	9.1	9.3	9.2	9.2	9.2	9.3	9.1	9.2	9.3	9.1	9.1	9.2
Std. Deviation	0.58	0.47	0.50	0.55	0.47	0.60	0.64	0.55	0.69	0.62	0.67	0.56
% Calcium > 10.2	0%	0%	0%	1%	1%	2%	0%	0%	4%	3%	1%	0%



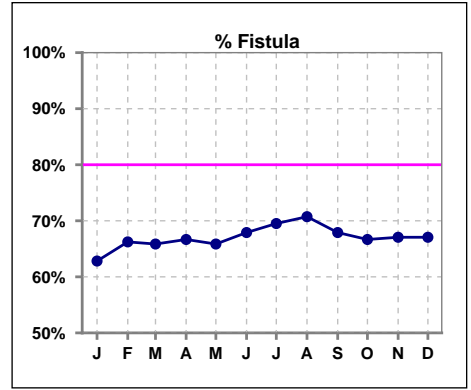
	Jan	Feb	Mar	Apr	May	Jun	Jul	Aug	Sep	Oct	Nov	Dec
# PTH-I	78			81			81			80		
# PTH-I 150 to 600	47			51			59			57		
Pop. Mean	596			520			513			477		
Std. Deviation	646			545			535			337		
% PTH-I 150 to 600	60%			63%			73%			71%		



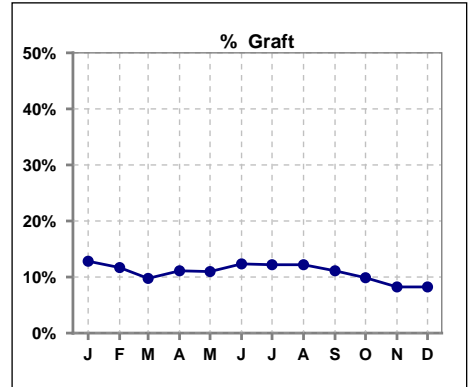
Methodology: a) All labs for 'Adequacy of Dialysis', 'Nutrition', 'Osteodystrophy', 'Anemia' and 'Diabetes' based on last value of month; b) BP's and #L processed are average of all values for month; c) Access data takes last access of month; d) Values for SGA and 'Infection Control' use most recent result.

IV. ACCESS

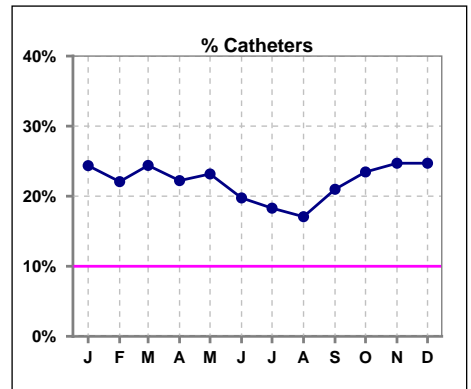
	Jan	Feb	Mar	Apr	May	Jun	Jul	Aug	Sep	Oct	Nov	Dec
# Access	78	77	82	81	82	81	82	82	81	81	85	85
# Fistula	49	51	54	54	54	55	57	58	55	54	57	57
% Fistula	63%	66%	66%	67%	66%	68%	70%	71%	68%	67%	67%	67%



	Jan	Feb	Mar	Apr	May	Jun	Jul	Aug	Sep	Oct	Nov	Dec
# Access	78	77	82	81	82	81	82	82	81	81	85	85
# Graft	10	9	8	9	9	10	10	10	9	8	7	7
% Graft	13%	12%	10%	11%	11%	12%	12%	12%	11%	10%	8%	8%



	Jan	Feb	Mar	Apr	May	Jun	Jul	Aug	Sep	Oct	Nov	Dec
# Access	78	77	82	81	82	81	82	82	81	81	85	85
# Catheters	19	17	20	18	19	16	15	14	17	19	21	21
% Catheters	24%	22%	24%	22%	23%	20%	18%	17%	21%	23%	25%	25%



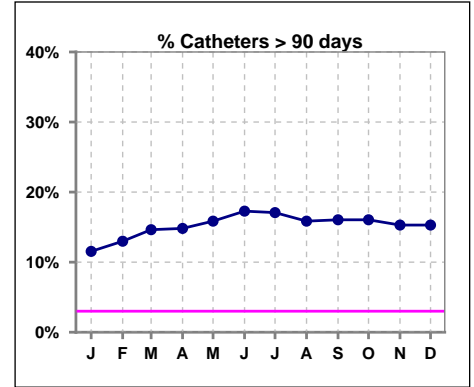
Methodology: a) All labs for 'Adequacy of Dialysis', 'Nutrition', 'Osteodystrophy', 'Anemia' and 'Diabetes' based on last value of month; b) BP's and #L processed are average of all values for month; c) Access data takes last access of month; d) Values for SGA and 'Infection Control' use most recent result.

IV. ACCESS - CONT.

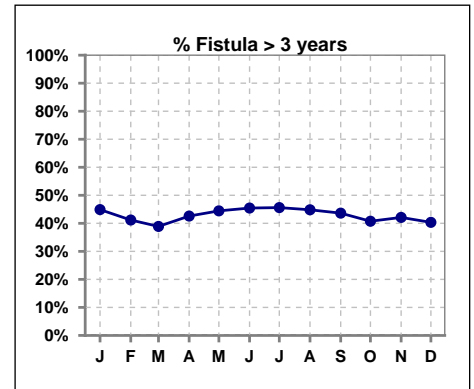
Catheters > 90 days

	Jan	Feb	Mar	Apr	May	Jun	Jul	Aug	Sep	Oct	Nov	Dec
# Access	78	77	82	81	82	81	82	82	81	81	85	85
# Catheters	9	10	12	12	13	14	14	13	13	13	13	13
% Catheters	12%	13%	15%	15%	16%	17%	17%	16%	16%	16%	15%	15%

Definition: Catheter in use on last treatment of the month



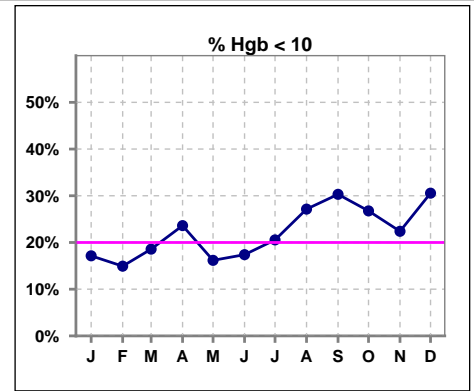
	Jan	Feb	Mar	Apr	May	Jun	Jul	Aug	Sep	Oct	Nov	Dec
# Fistula	49	51	54	54	54	55	57	58	55	54	57	57
# Fistula > 3 yrs	22	21	21	23	24	25	26	26	24	22	24	23
% Fistula > 3 yrs	45%	41%	39%	43%	44%	45%	46%	45%	44%	41%	42%	40%



V. ANEMIA

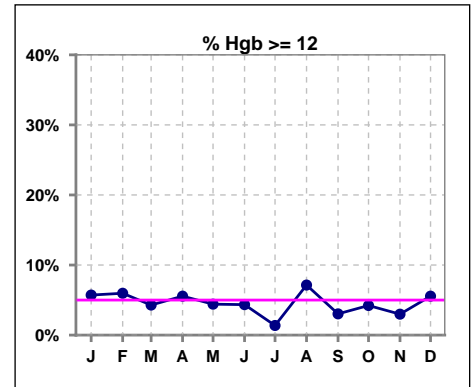
	Jan	Feb	Mar	Apr	May	Jun	Jul	Aug	Sep	Oct	Nov	Dec
# Hgb	70	67	70	72	68	69	73	70	66	71	67	72
# Hgb < 10	12	10	13	17	11	12	15	19	20	19	15	22
Pop. Mean	10.8	10.8	10.7	10.7	10.8	10.7	10.6	10.5	10.5	10.3	10.5	10.5
Std. Deviation	1.2	1.0	1.1	1.1	1.1	1.0	1.1	1.1	1.0	1.3	1.2	1.1
% Hgb < 10	17%	15%	19%	24%	16%	17%	21%	27%	30%	27%	22%	31%

Note: Excludes patients who received no ESA in month.



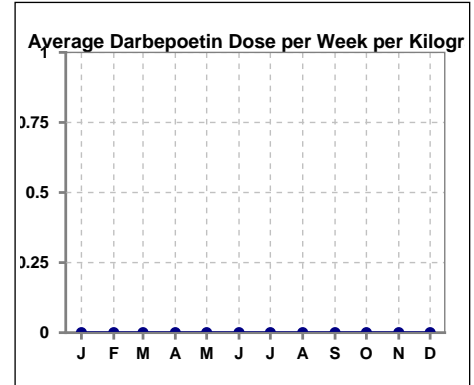
	Jan	Feb	Mar	Apr	May	Jun	Jul	Aug	Sep	Oct	Nov	Dec
# Hgb	70	67	70	72	68	69	73	70	66	71	67	72
# Hgb >= 12	4	4	3	4	3	3	1	5	2	3	2	4
Pop. Mean	10.8	10.8	10.7	10.7	10.8	10.7	10.6	10.5	10.5	10.3	10.5	10.5
Std. Deviation	1.2	1.0	1.1	1.1	1.1	1.0	1.1	1.1	1.0	1.3	1.2	1.1
% Hgb >= 12	6%	6%	4%	6%	4%	4%	1%	7%	3%	4%	3%	6%

Note: Excludes patients who received no ESA in month.



Average Darbepoetin Dose per Week per Kilogram

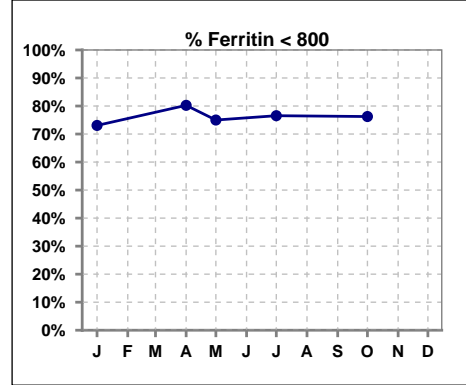
	Jan	Feb	Mar	Apr	May	Jun	Jul	Aug	Sep	Oct	Nov	Dec
# Average Darbepoetin	0	0	0	0	0	0	0	0	0	0	0	0



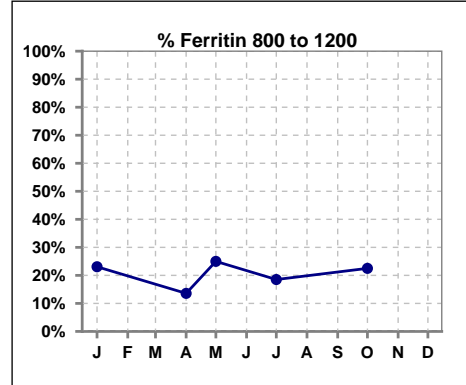
V. ANEMIA - CONT.

Iron Profile

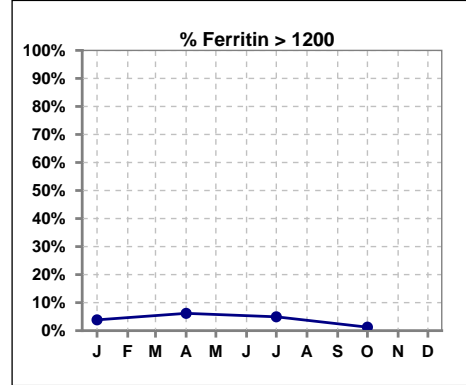
	Jan	Feb	Mar	Apr	May	Jun	Jul	Aug	Sep	Oct	Nov	Dec
# Ferritin	78			81	4		81			80		
# Ferritin < 800	57			65	3		62			61		
Pop. Mean	588			555	407		572			533		
Std. Deviation	330			340	445		376			326		
% Ferritin < 800	73%			80%	75%		77%			76%		



	Jan	Feb	Mar	Apr	May	Jun	Jul	Aug	Sep	Oct	Nov	Dec
# Ferritin	78			81	4		81			80		
# Ferritin 800 to 1200	18			11	1		15			18		
Pop. Mean	588			555	407		572			533		
Std. Deviation	330			340	445		376			326		
% Ferritin 800 to 1200	23%			14%	25%		19%			23%		

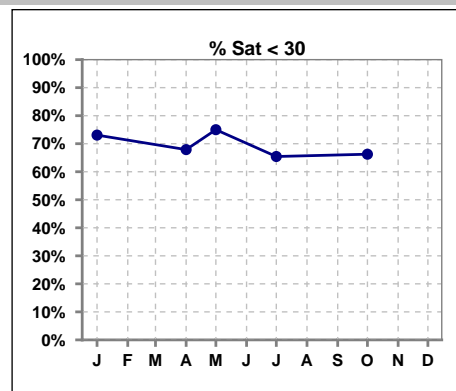


	Jan	Feb	Mar	Apr	May	Jun	Jul	Aug	Sep	Oct	Nov	Dec
# Ferritin	78			81	4		81			80		
# Ferritin > 1200	3			5			4			1		
Pop. Mean	588			555	407		572			533		
Std. Deviation	330			340	445		376			326		
% Ferritin > 1200	4%			6%			5%			1%		

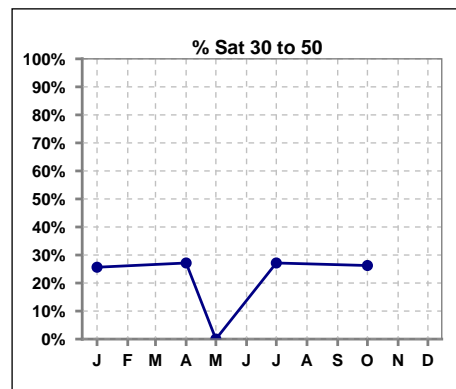


V. ANEMIA - CONT.

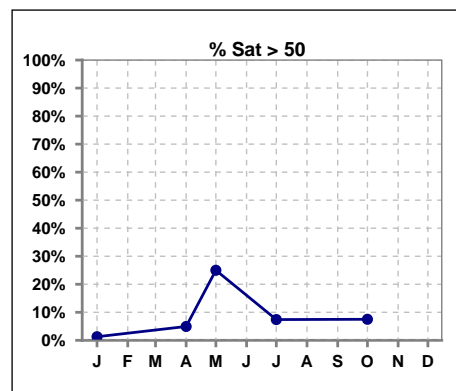
	Jan	Feb	Mar	Apr	May	Jun	Jul	Aug	Sep	Oct	Nov	Dec
# % Sat	78			81	4		81			80		
# % Sat < 30	57			55	3		53			53		
Pop. Mean	25			27	32		29			28		
Std. Deviation	9			13	26		14			15		
% % Sat < 30	73%			68%	75%		65%			66%		



	Jan	Feb	Mar	Apr	May	Jun	Jul	Aug	Sep	Oct	Nov	Dec
# % Sat	78			81	4		81			80		
# % Sat 30 to 50	20			22	0		22			21		
Pop. Mean	25			27	32		29			28		
Std. Deviation	9			13	26		14			15		
% % Sat 30 to 50	26%			27%	0%		27%			26%		

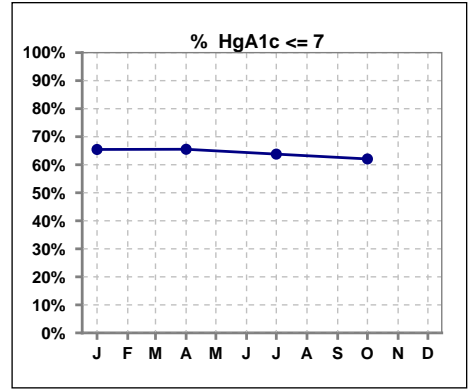


	Jan	Feb	Mar	Apr	May	Jun	Jul	Aug	Sep	Oct	Nov	Dec
# % Sat	78			81	4		81			80		
# % Sat > 50	1			4	1		6			6		
Pop. Mean	25			27	32		29			28		
Std. Deviation	9			13	26		14			15		
% % Sat > 50	1%			5%	25%		7%			8%		



VI. Diabetes

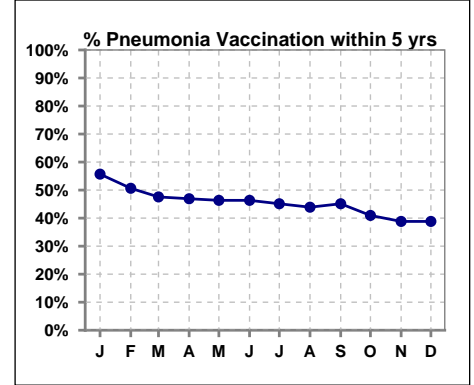
	Jan	Feb	Mar	Apr	May	Jun	Jul	Aug	Sep	Oct	Nov	Dec
# HgA1c	55			58			58			58		
# HgA1c <= 7	36			38			37			36		
Pop. Mean	6.6			6.6			6.5			6.6		
Std. Deviation	1.37			1.34			1.38			1.38		
% HgA1c <= 7	65%			66%			64%			62%		



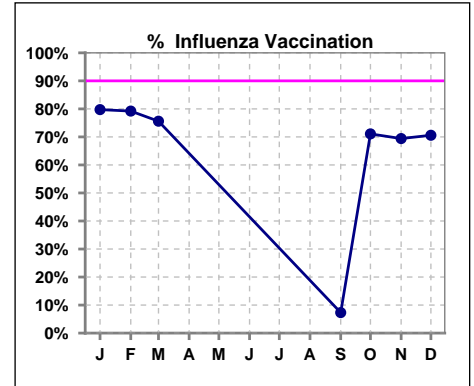
VII. Infection Control

Pneumonia vaccination within the past five years

	Jan	Feb	Mar	Apr	May	Jun	Jul	Aug	Sep	Oct	Nov	Dec
# Patient	79	77	82	81	82	82	82	82	82	83	85	85
# Pneumonia	44	39	39	38	38	38	37	36	37	34	33	33
% Pneumonia	56%	51%	48%	47%	46%	46%	45%	44%	45%	41%	39%	39%



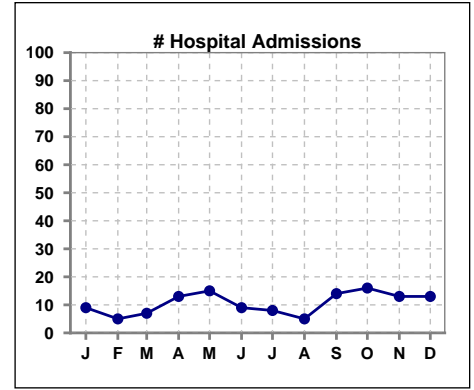
	Jan	Feb	Mar	Apr	May	Jun	Jul	Aug	Sep	Oct	Nov	Dec
# Patient	79	77	82						82	83	85	85
# Influenza	63	61	62						6	59	59	60
% Influenza	80%	79%	76%						7%	71%	69%	71%



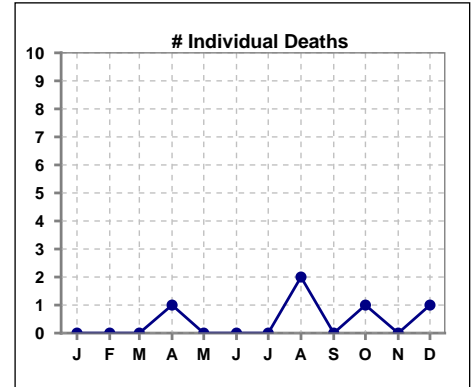
Methodology: a) All labs for 'Adequacy of Dialysis', 'Nutrition', 'Osteodystrophy', 'Anemia' and 'Diabetes' based on last value of month; b) BP's and #L processed are average of all values for month; c) Access data takes last access of month; d) Values for SGA and 'Infection Control' use most recent result.

VIII. Outcome measures

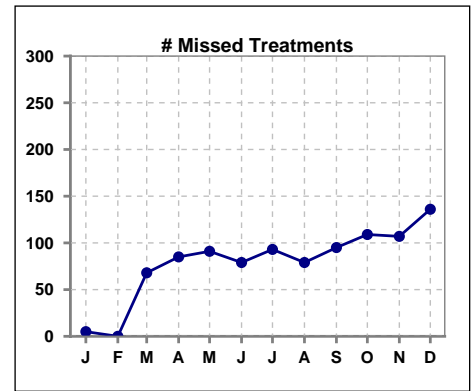
	Jan	Feb	Mar	Apr	May	Jun	Jul	Aug	Sep	Oct	Nov	Dec
# Patient	79	77	82	81	82	82	82	82	82	83	85	85
# Hospital Admissions	9	5	7	13	15	9	8	5	14	16	13	13



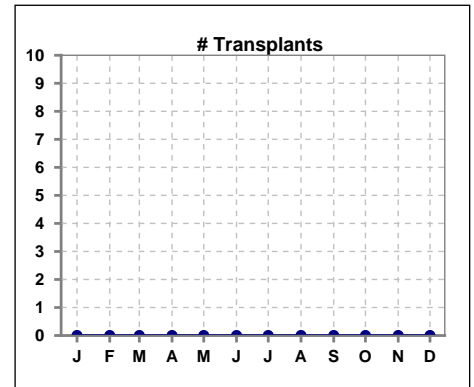
	Jan	Feb	Mar	Apr	May	Jun	Jul	Aug	Sep	Oct	Nov	Dec
# Patient	79	77	82	81	82	82	82	82	82	83	85	85
# Individual Deaths	0	0	0	1	0	0	0	2	0	1	0	1



	Jan	Feb	Mar	Apr	May	Jun	Jul	Aug	Sep	Oct	Nov	Dec
# Patient	79	77	82	81	82	82	82	82	82	83	85	85
# Missed Treatments	5	0	68	85	91	79	93	79	95	109	107	136



	Jan	Feb	Mar	Apr	May	Jun	Jul	Aug	Sep	Oct	Nov	Dec
# Patient	79	77	82	81	82	82	82	82	82	83	85	85
# Transplants	0	0	0	0	0	0	0	0	0	0	0	0



Methodology: a) All labs for 'Adequacy of Dialysis', 'Nutrition', 'Osteodystrophy', 'Anemia' and 'Diabetes' based on last value of month; b) BP's and #L processed are average of all values for month; c) Access data takes last access of month; d) Values for SGA and 'Infection Control' use most recent result.