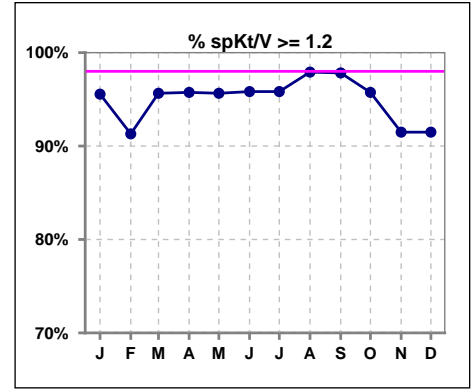
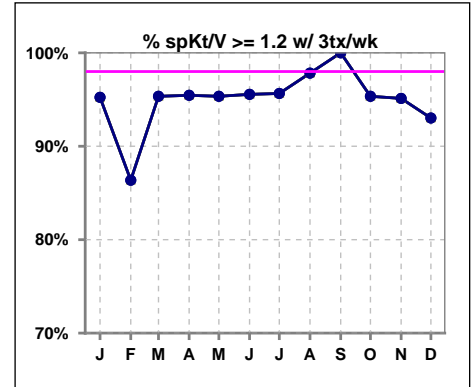


I. ADEQUACY OF DIALYSIS

	Jan	Feb	Mar	Apr	May	Jun	Jul	Aug	Sep	Oct	Nov	Dec
# spKt/V	45	46	46	47	46	48	48	48	46	47	47	47
# spKt/V >= 1.2	43	42	44	45	44	46	46	47	45	45	43	43
Pop. Mean	1.64	1.60	1.61	1.60	1.63	1.63	1.60	1.59	1.61	1.57	1.57	1.55
Std. Deviation	0.38	0.35	0.34	0.29	0.29	0.33	0.32	0.27	0.27	0.29	0.36	0.34
% spKt/V >= 1.2	96%	91%	96%	96%	96%	96%	96%	98%	98%	96%	91%	91%

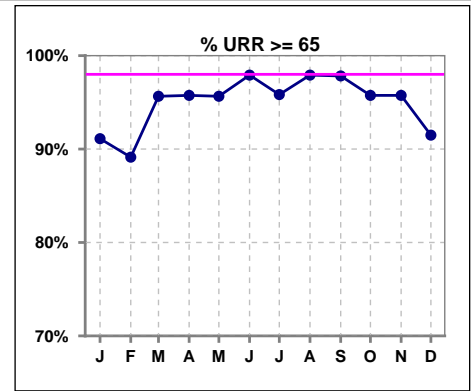


	Jan	Feb	Mar	Apr	May	Jun	Jul	Aug	Sep	Oct	Nov	Dec
# spKt/V w/ 3tx/wk	42	44	43	44	43	45	46	46	42	43	41	43
# spKt/V >= 1.2 w/3tx/wk	40	38	41	42	41	43	44	45	42	41	39	40
Pop. Mean	1.66	1.60	1.61	1.61	1.62	1.62	1.61	1.59	1.63	1.55	1.58	1.54
Std. Deviation	0.39	0.35	0.35	0.30	0.29	0.33	0.32	0.27	0.26	0.25	0.27	0.30
% >= 1.2 w/3tx/wk	95%	86%	95%	95%	95%	96%	96%	98%	100%	95%	95%	93%

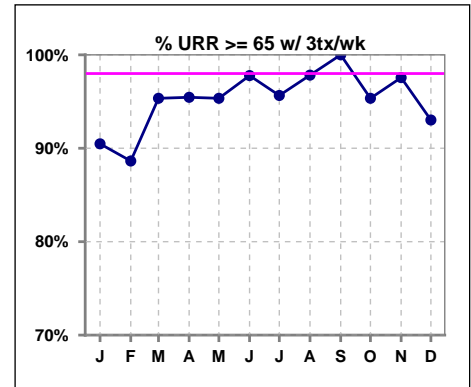


I. ADEQUACY OF DIALYSIS - CONT.

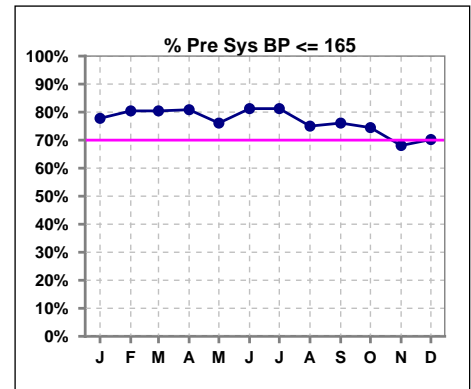
	Jan	Feb	Mar	Apr	May	Jun	Jul	Aug	Sep	Oct	Nov	Dec
# URR	45	46	46	47	46	48	48	48	46	47	47	47
# URR >= 65	41	41	44	45	44	47	46	47	45	45	45	43
Pop. Mean	75	74	74	74	75	75	75	74	75	74	74	74
Std. Deviation	6.99	6.62	7.10	5.72	5.64	6.20	6.20	5.30	5.14	5.62	7.40	7.03
% URR >= 65	91%	89%	96%	96%	96%	98%	96%	98%	98%	96%	96%	91%



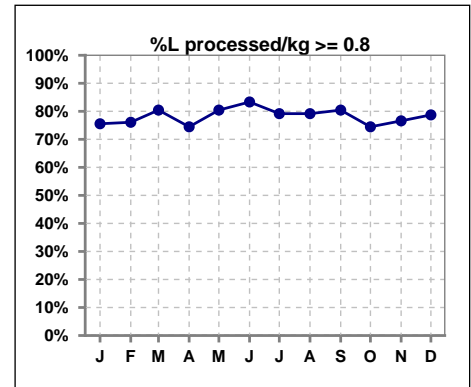
	Jan	Feb	Mar	Apr	May	Jun	Jul	Aug	Sep	Oct	Nov	Dec
# URR w/ 3tx/wk	42	44	43	44	43	45	46	46	42	43	41	43
# URR>=65 w/ 3tx/wk	38	39	41	42	41	44	44	45	42	41	40	40
Pop. Mean	75	74	74	75	75	75	75	74	75	74	75	73
Std. Deviation	7.03	6.66	7.23	5.79	5.72	6.23	6.29	5.41	4.65	5.33	5.19	6.74
% URR>=65 w/ 3tx/wk	90%	89%	95%	95%	95%	98%	96%	98%	100%	95%	98%	93%



	Jan	Feb	Mar	Apr	May	Jun	Jul	Aug	Sep	Oct	Nov	Dec
# Pre Sys BP	45	46	46	47	46	48	48	48	46	47	47	47
# Pre Sys BP <= 165	35	37	37	38	35	39	39	37	38	37	34	34
Pop. Mean	143	148	147	145	148	145	148	149	148	147	149	149
Std. Deviation	23.4	22.2	21.0	22.3	23.0	22.0	21.6	24.7	23.2	22.3	22.4	22.6
%Pre Sys BP <=165	78%	80%	80%	81%	76%	81%	81%	75%	76%	74%	68%	70%



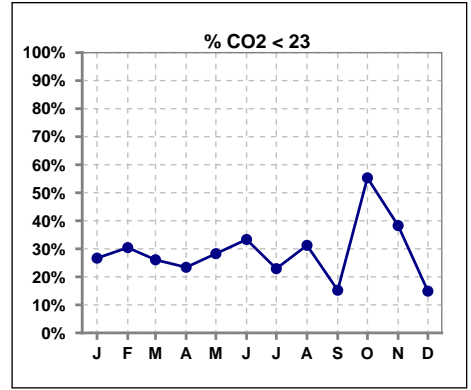
	Jan	Feb	Mar	Apr	May	Jun	Jul	Aug	Sep	Oct	Nov	Dec
# L processed/kg	45	46	46	47	46	48	48	48	46	47	47	47
# L processed/kg>=0.8	34	35	37	35	37	40	38	38	37	35	36	37
Pop. Mean	1	1	1	1	1	1	1	1	1	1	1	1
Std. Deviation	0.3	0.3	0.3	0.3	0.3	0.3	0.3	0.3	0.3	0.3	0.3	0.3
% L processed/kg>=0.8	76%	76%	80%	74%	80%	83%	79%	79%	80%	74%	77%	79%



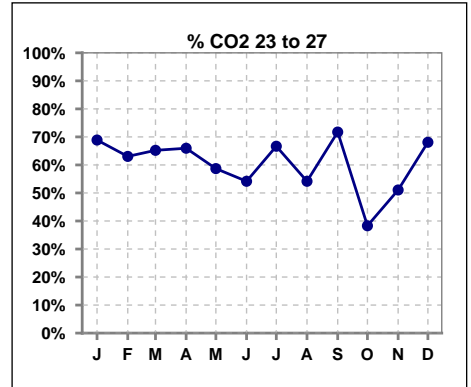
Methodology: a) All labs for 'Adequacy of Dialysis', 'Nutrition', 'Osteodystrophy', 'Anemia' and 'Diabetes' based on last value of month; b) BP's and #L processed are average of all values for month; c) Access data takes last access of month; d) Values for SGA and 'Infection Control' use most recent result.

I. ADEQUACY OF DIALYSIS - CONT.

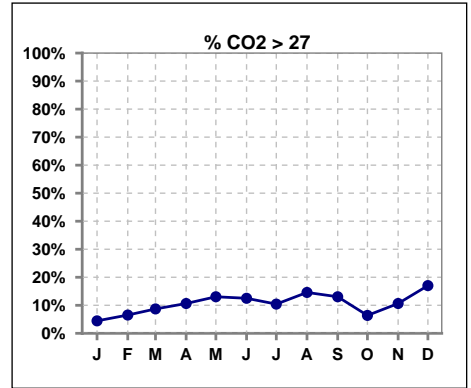
	Jan	Feb	Mar	Apr	May	Jun	Jul	Aug	Sep	Oct	Nov	Dec
# CO2	45	46	46	47	46	48	48	48	46	47	47	47
# CO2 < 23	12	14	12	11	13	16	11	15	7	26	18	7
Pop. Mean	24	24	24	25	25	24	25	24	25	23	23	25
Std. Deviation	2.29	2.95	2.73	2.73	2.49	3.17	3.16	2.87	2.56	3.11	3.10	2.59
% CO2 < 23	27%	30%	26%	23%	28%	33%	23%	31%	15%	55%	38%	15%



	Jan	Feb	Mar	Apr	May	Jun	Jul	Aug	Sep	Oct	Nov	Dec
# CO2	45	46	46	47	46	48	48	48	46	47	47	47
# CO2 23 to 27	31	29	30	31	27	26	32	26	33	18	24	32
Pop. Mean	24	24	24	25	25	24	25	24	25	23	23	25
Std. Deviation	2.29	2.95	2.73	2.73	2.49	3.17	3.16	2.87	2.56	3.11	3.10	2.59
% CO2 23 to 27	69%	63%	65%	66%	59%	54%	67%	54%	72%	38%	51%	68%



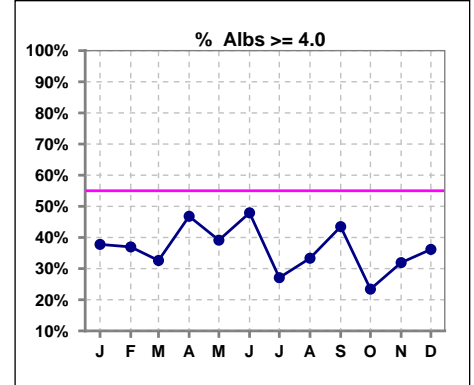
	Jan	Feb	Mar	Apr	May	Jun	Jul	Aug	Sep	Oct	Nov	Dec
# CO2	45	46	46	47	46	48	48	48	46	47	47	47
# CO2 > 27	2	3	4	5	6	6	5	7	6	3	5	8
Pop. Mean	24	24	24	25	25	24	25	24	25	23	23	25
Std. Deviation	2.29	2.95	2.73	2.73	2.49	3.17	3.16	2.87	2.56	3.11	3.10	2.59
% CO2 > 27	4%	7%	9%	11%	13%	13%	10%	15%	13%	6%	11%	17%



*Albumin values use BCG method - as of July 2001

II. NUTRITION

	Jan	Feb	Mar	Apr	May	Jun	Jul	Aug	Sep	Oct	Nov	Dec
# Albumin	45	46	46	47	46	48	48	48	46	47	47	47
# Albumin >= 4.0	17	17	15	22	18	23	13	16	20	11	15	17
Pop. Mean	3.8	3.8	3.8	3.9	3.8	3.9	3.8	3.8	3.8	3.7	3.7	3.8
Std. Deviation	0.46	0.39	0.35	0.34	0.32	0.37	0.34	0.37	0.36	0.35	0.41	0.41
% Alb >= 4.0	38%	37%	33%	47%	39%	48%	27%	33%	43%	23%	32%	36%

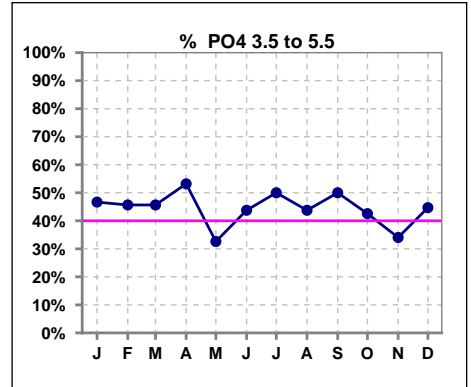


Methodology: a) All labs for 'Adequacy of Dialysis', 'Nutrition', 'Osteodystrophy', 'Anemia' and 'Diabetes' based on last value of month; b) BP's and #L processed are average of all values for month; c) Access data takes last access of month; d) Values for SGA and 'Infection Control' use most recent result.

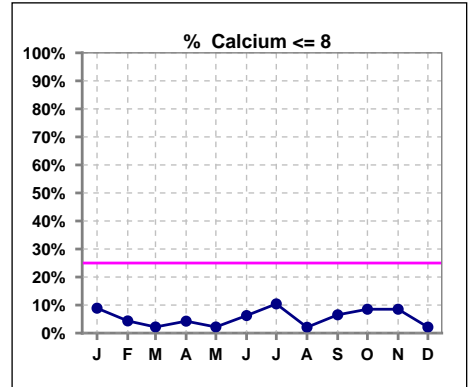
Lab methodology for PTH changed January 2012

III. OSTEODYSTROPHY

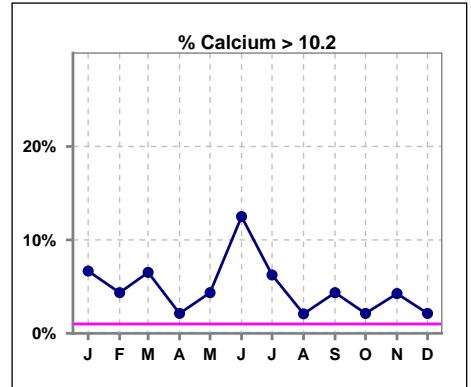
	Jan	Feb	Mar	Apr	May	Jun	Jul	Aug	Sep	Oct	Nov	Dec
# PO4	45	46	46	47	46	48	48	48	46	47	47	47
# PO4 3.5 to 5.5	21	21	21	25	15	21	24	21	23	20	16	21
Pop. Mean	5.5	5.6	5.6	5.6	5.6	5.8	5.5	5.6	5.8	5.9	5.7	5.7
Std. Deviation	1.60	1.68	1.62	1.70	1.68	1.85	1.36	1.62	1.54	2.03	1.89	1.96
% PO4 3.5 to 5.5	47%	46%	46%	53%	33%	44%	50%	44%	50%	43%	34%	45%



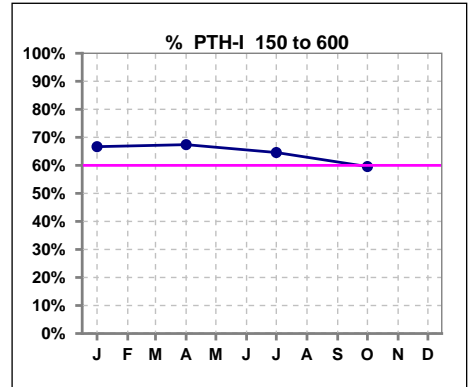
	Jan	Feb	Mar	Apr	May	Jun	Jul	Aug	Sep	Oct	Nov	Dec
# Calcium	45	46	46	47	46	48	48	48	46	47	47	47
# Calcium <= 8	4	2	1	2	1	3	5	1	3	4	4	1
Pop. Mean	9.1	9.2	9.3	9.2	9.4	9.4	9.2	9.2	9.2	9.0	9.2	9.3
Std. Deviation	0.84	0.70	0.62	0.57	0.57	0.82	0.78	0.60	0.63	0.73	0.72	0.61
% Calcium <= 8	9%	4%	2%	4%	2%	6%	10%	2%	7%	9%	9%	2%



	Jan	Feb	Mar	Apr	May	Jun	Jul	Aug	Sep	Oct	Nov	Dec
# Calcium	45	46	46	47	46	48	48	48	46	47	47	47
# Calcium > 10.2	3	2	3	1	2	6	3	1	2	1	2	1
Pop. Mean	9.1	9.2	9.3	9.2	9.4	9.4	9.2	9.2	9.2	9.0	9.2	9.3
Std. Deviation	0.84	0.70	0.62	0.57	0.57	0.82	0.78	0.60	0.63	0.73	0.72	0.61
% Calcium > 10.2	7%	4%	7%	2%	4%	13%	6%	2%	4%	2%	4%	2%



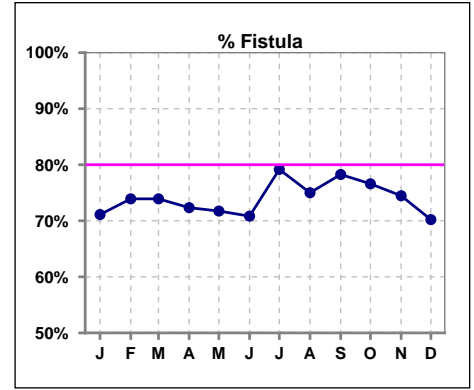
	Jan	Feb	Mar	Apr	May	Jun	Jul	Aug	Sep	Oct	Nov	Dec
# PTH-I	45			46			48			47		
# PTH-I 150 to 600	30			31			31			28		
Pop. Mean	384			412			364			551		
Std. Deviation	342			323			337			536		
% PTH-I 150 to 600	67%			67%			65%			60%		



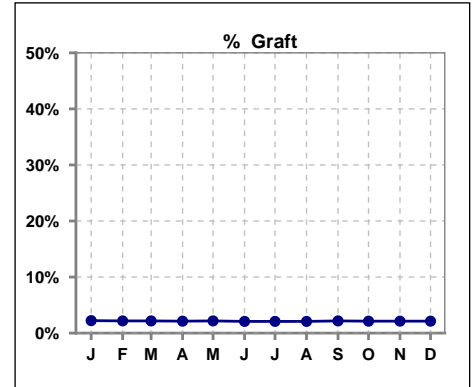
Methodology: a) All labs for 'Adequacy of Dialysis', 'Nutrition', 'Osteodystrophy', 'Anemia' and 'Diabetes' based on last value of month; b) BP's and #L processed are average of all values for month; c) Access data takes last access of month; d) Values for SGA and 'Infection Control' use most recent result.

IV. ACCESS

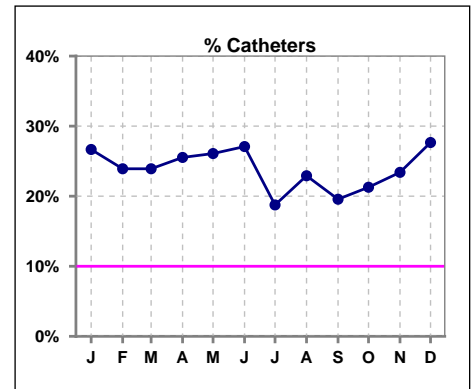
	Jan	Feb	Mar	Apr	May	Jun	Jul	Aug	Sep	Oct	Nov	Dec
# Access	45	46	46	47	46	48	48	48	46	47	47	47
# Fistula	32	34	34	34	33	34	38	36	36	36	35	33
% Fistula	71%	74%	74%	72%	72%	71%	79%	75%	78%	77%	74%	70%



	Jan	Feb	Mar	Apr	May	Jun	Jul	Aug	Sep	Oct	Nov	Dec
# Access	45	46	46	47	46	48	48	48	46	47	47	47
# Graft	1	1	1	1	1	1	1	1	1	1	1	1
% Graft	2%	2%	2%	2%	2%	2%	2%	2%	2%	2%	2%	2%



	Jan	Feb	Mar	Apr	May	Jun	Jul	Aug	Sep	Oct	Nov	Dec
# Access	45	46	46	47	46	48	48	48	46	47	47	47
# Catheters	12	11	11	12	12	13	9	11	9	10	11	13
% Catheters	27%	24%	24%	26%	26%	27%	19%	23%	20%	21%	23%	28%



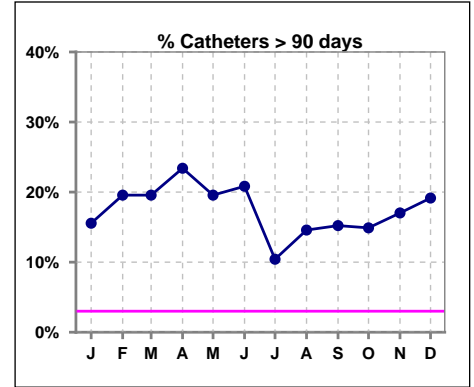
Methodology: a) All labs for 'Adequacy of Dialysis', 'Nutrition', 'Osteodystrophy', 'Anemia' and 'Diabetes' based on last value of month; b) BP's and #L processed are average of all values for month; c) Access data takes last access of month; d) Values for SGA and 'Infection Control' use most recent result.

IV. ACCESS - CONT.

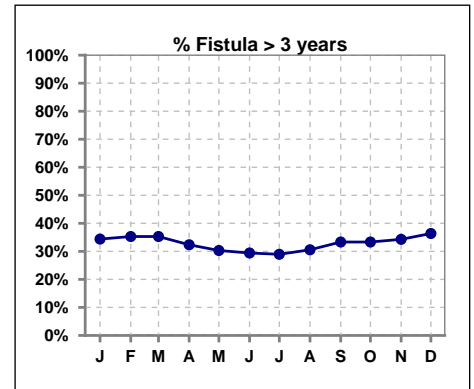
Catheters > 90 days

	Jan	Feb	Mar	Apr	May	Jun	Jul	Aug	Sep	Oct	Nov	Dec
# Access	45	46	46	47	46	48	48	48	46	47	47	47
# Catheters	7	9	9	11	9	10	5	7	7	7	8	9
% Catheters	16%	20%	20%	23%	20%	21%	10%	15%	15%	15%	17%	19%

Definition: Catheter in use on last treatment of the month



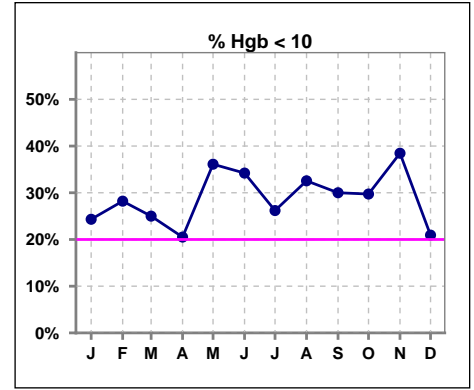
	Jan	Feb	Mar	Apr	May	Jun	Jul	Aug	Sep	Oct	Nov	Dec
# Fistula	32	34	34	34	33	34	38	36	36	36	35	33
# Fistula > 3 yrs	11	12	12	11	10	10	11	11	12	12	12	12
% Fistula > 3 yrs	34%	35%	35%	32%	30%	29%	29%	31%	33%	33%	34%	36%



V. ANEMIA

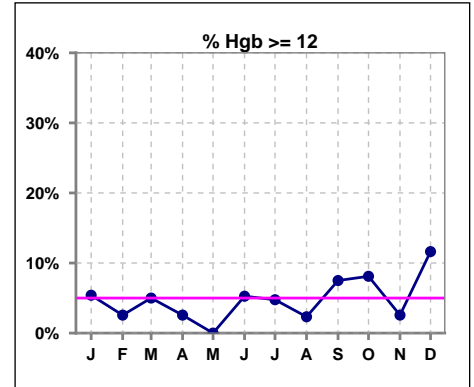
	Jan	Feb	Mar	Apr	May	Jun	Jul	Aug	Sep	Oct	Nov	Dec
# Hgb	37	39	40	39	36	38	42	43	40	37	39	43
# Hgb < 10	9	11	10	8	13	13	11	14	12	11	15	9
Pop. Mean	10.6	10.6	10.6	10.6	10.5	10.5	10.6	10.5	10.4	10.6	10.3	10.9
Std. Deviation	1.3	1.1	1.1	1.0	1.1	1.0	1.0	1.1	1.2	1.5	1.3	1.3
% Hgb < 10	24%	28%	25%	21%	36%	34%	26%	33%	30%	30%	38%	21%

Note: Excludes patients who received no ESA in month.



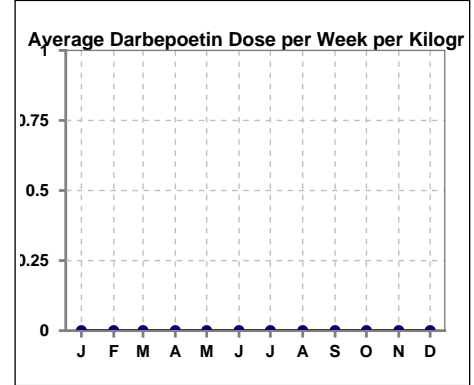
	Jan	Feb	Mar	Apr	May	Jun	Jul	Aug	Sep	Oct	Nov	Dec
# Hgb	37	39	40	39	36	38	42	43	40	37	39	43
# Hgb >= 12	2	1	2	1	0	2	2	1	3	3	1	5
Pop. Mean	10.6	10.6	10.6	10.6	10.5	10.5	10.6	10.5	10.4	10.6	10.3	10.9
Std. Deviation	1.3	1.1	1.1	1.0	1.1	1.0	1.0	1.1	1.2	1.5	1.3	1.3
% Hgb >= 12	5%	3%	5%	3%	0%	5%	5%	2%	8%	8%	3%	12%

Note: Excludes patients who received no ESA in month.



Average Darbepoetin Dose per Week per Kilogram

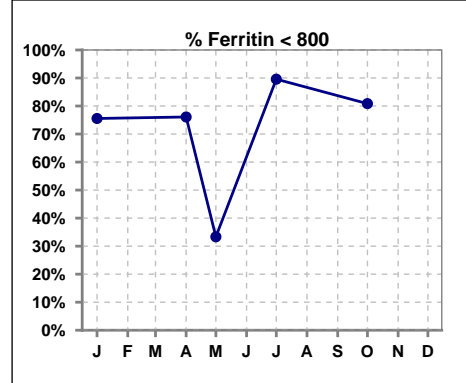
	Jan	Feb	Mar	Apr	May	Jun	Jul	Aug	Sep	Oct	Nov	Dec
# Average Darbepoetin	0	0	0	0	0	0	0	0	0	0	0	0



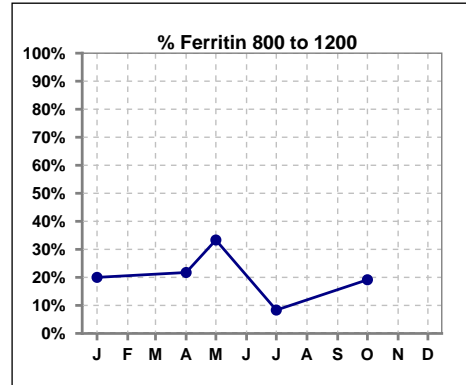
V. ANEMIA - CONT.

Iron Profile

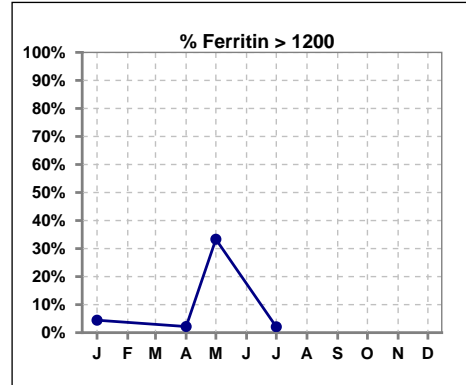
	Jan	Feb	Mar	Apr	May	Jun	Jul	Aug	Sep	Oct	Nov	Dec
# Ferritin	45			46	3		48			47		
# Ferritin < 800	34			35	1		43			38		
Pop. Mean	527			467	903		450			450		
Std. Deviation	371			342	343		301			305		
% Ferritin < 800	76%			76%	33%		90%			81%		



	Jan	Feb	Mar	Apr	May	Jun	Jul	Aug	Sep	Oct	Nov	Dec
# Ferritin	45			46	3		48			47		
# Ferritin 800 to 1200	9			10	1		4			9		
Pop. Mean	527			467	903		450			450		
Std. Deviation	371			342	343		301			305		
% Ferritin 800 to 1200	20%			22%	33%		8%			19%		

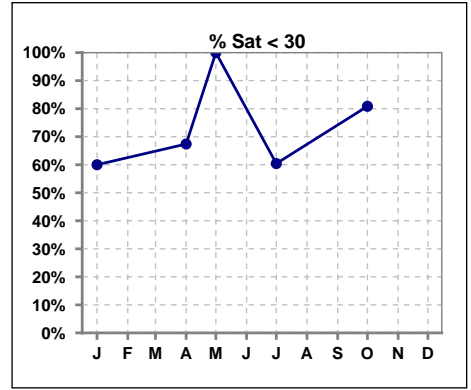


	Jan	Feb	Mar	Apr	May	Jun	Jul	Aug	Sep	Oct	Nov	Dec
# Ferritin	45			46	3		48			47		
# Ferritin > 1200	2			1	1		1					
Pop. Mean	527			467	903		450			450		
Std. Deviation	371			342	343		301			305		
% Ferritin > 1200	4%			2%	33%		2%					

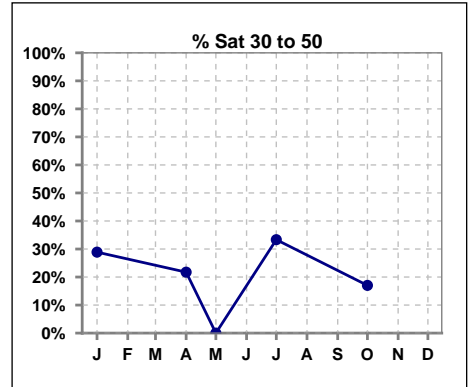


V. ANEMIA - CONT.

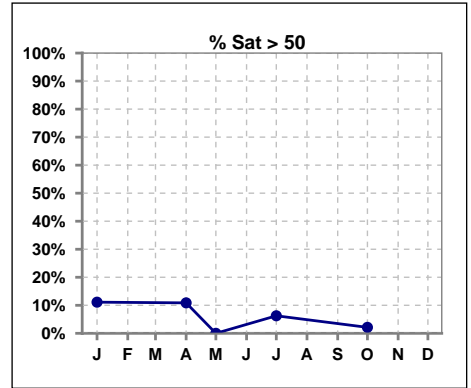
	Jan	Feb	Mar	Apr	May	Jun	Jul	Aug	Sep	Oct	Nov	Dec
# % Sat	45			46	3		48			47		
# % Sat < 30	27			31	3		29			38		
Pop. Mean	29			30	21		28			24		
Std. Deviation	20			22	4		13			15		
% % Sat < 30	60%			67%	100%		60%			81%		



	Jan	Feb	Mar	Apr	May	Jun	Jul	Aug	Sep	Oct	Nov	Dec
# % Sat	45			46	3		48			47		
# % Sat 30 to 50	13			10	0		16			8		
Pop. Mean	29			30	21		28			24		
Std. Deviation	20			22	4		13			15		
% % Sat 30 to 50	29%			22%	0%		33%			17%		

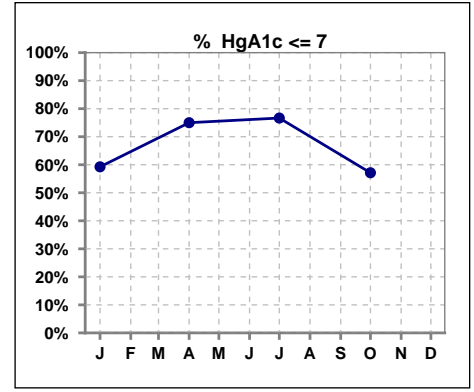


	Jan	Feb	Mar	Apr	May	Jun	Jul	Aug	Sep	Oct	Nov	Dec
# % Sat	45			46	3		48			47		
# % Sat > 50	5			5	0		3			1		
Pop. Mean	29			30	21		28			24		
Std. Deviation	20			22	4		13			15		
% % Sat > 50	11%			11%	0%		6%			2%		



VI. Diabetes

	Jan	Feb	Mar	Apr	May	Jun	Jul	Aug	Sep	Oct	Nov	Dec
# HgA1c	27			28			30			28		
# HgA1c <= 7	16			21			23			16		
Pop. Mean	6.8			6.6			6.6			6.9		
Std. Deviation	1.38			1.24			1.17			1.57		
% HgA1c <= 7	59%			75%			77%			57%		

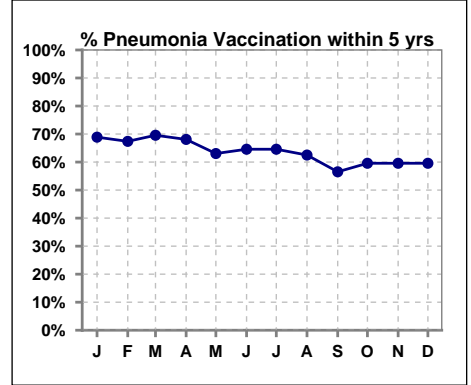


Methodology: a) All labs for 'Adequacy of Dialysis', 'Nutrition', 'Osteodystrophy', 'Anemia' and 'Diabetes' based on last value of month; b) BP's and #L processed are average of all values for month; c) Access data takes last access of month; d) Values for SGA and 'Infection Control' use most recent result.

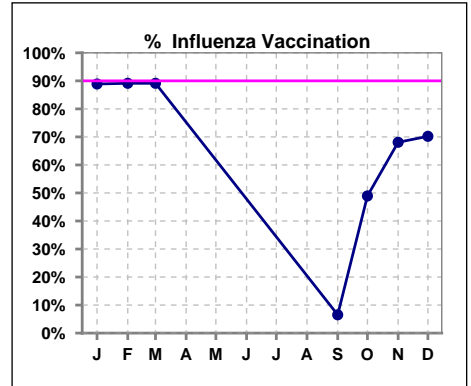
VII. Infection Control

Pneumonia vaccination within the past five years

	Jan	Feb	Mar	Apr	May	Jun	Jul	Aug	Sep	Oct	Nov	Dec
# Patient	45	46	46	47	46	48	48	48	46	47	47	47
# Pneumonia	31	31	32	32	29	31	31	30	26	28	28	28
% Pneumonia	69%	67%	70%	68%	63%	65%	65%	63%	57%	60%	60%	60%



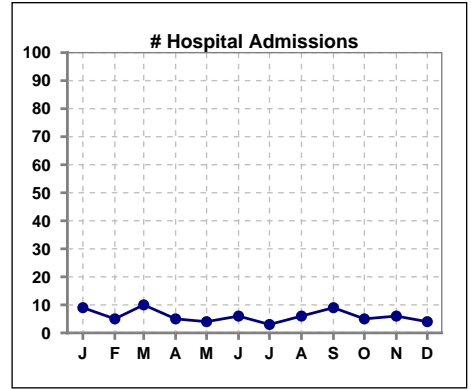
	Jan	Feb	Mar	Apr	May	Jun	Jul	Aug	Sep	Oct	Nov	Dec
# Patient	45	46	46						46	47	47	47
# Influenza	40	41	41						3	23	32	33
% Influenza	89%	89%	89%						7%	49%	68%	70%



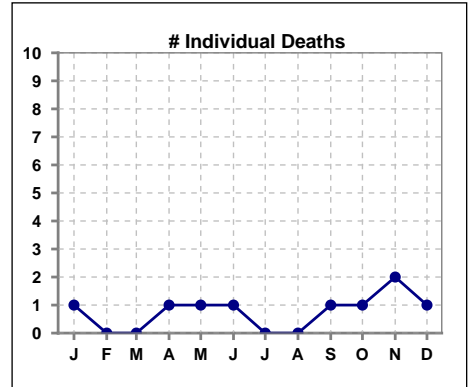
Methodology: a) All labs for 'Adequacy of Dialysis', 'Nutrition', 'Osteodystrophy', 'Anemia' and 'Diabetes' based on last value of month; b) BP's and #L processed are average of all values for month; c) Access data takes last access of month; d) Values for SGA and 'Infection Control' use most recent result.

VIII. Outcome measures

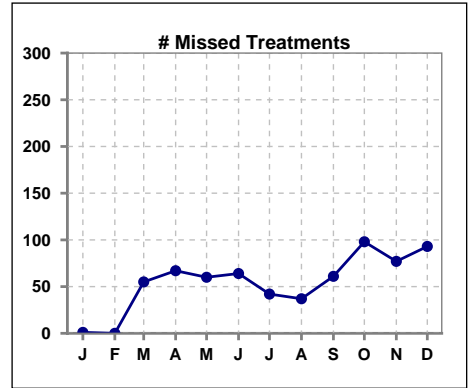
	Jan	Feb	Mar	Apr	May	Jun	Jul	Aug	Sep	Oct	Nov	Dec
# Patient	45	46	46	47	46	48	48	48	46	47	47	47
# Hospital Admissions	9	5	10	5	4	6	3	6	9	5	6	4



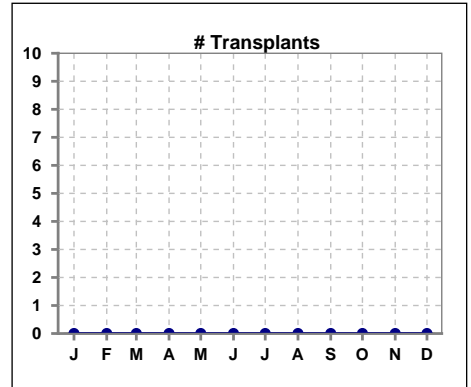
	Jan	Feb	Mar	Apr	May	Jun	Jul	Aug	Sep	Oct	Nov	Dec
# Patient	45	46	46	47	46	48	48	48	46	47	47	47
# Individual Deaths	1	0	0	1	1	1	0	0	1	1	2	1



	Jan	Feb	Mar	Apr	May	Jun	Jul	Aug	Sep	Oct	Nov	Dec
# Patient	45	46	46	47	46	48	48	48	46	47	47	47
# Missed Treatments	1	0	55	67	60	64	42	37	61	98	77	93



	Jan	Feb	Mar	Apr	May	Jun	Jul	Aug	Sep	Oct	Nov	Dec
# Patient	45	46	46	47	46	48	48	48	46	47	47	47
# Transplants	0	0	0	0	0	0	0	0	0	0	0	0



Methodology: a) All labs for 'Adequacy of Dialysis', 'Nutrition', 'Osteodystrophy', 'Anemia' and 'Diabetes' based on last value of month; b) BP's and #L processed are average of all values for month; c) Access data takes last access of month; d) Values for SGA and 'Infection Control' use most recent result.