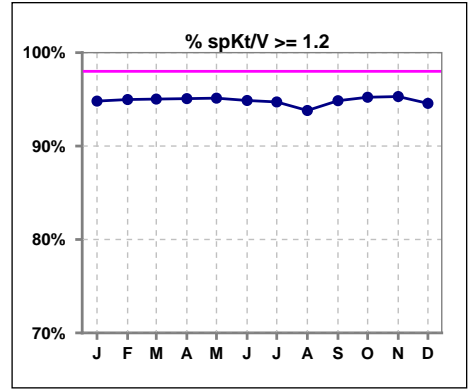
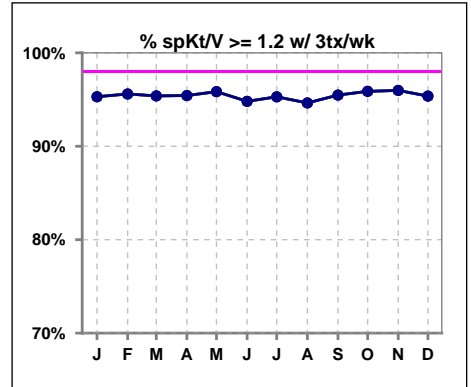


I. ADEQUACY OF DIALYSIS

	Jan	Feb	Mar	Apr	May	Jun	Jul	Aug	Sep	Oct	Nov	Dec
# spKt/V	1542	1574	1549	1544	1539	1543	1553	1566	1555	1550	1553	1565
# spKt/V >= 1.2	1462	1495	1472	1468	1464	1464	1471	1469	1475	1476	1480	1480
Pop. Mean	1.62	1.62	1.62	1.61	1.60	1.61	1.63	1.59	1.61	1.61	1.63	1.62
Std. Deviation	0.31	0.32	0.33	0.32	0.31	0.33	0.36	0.31	0.31	0.33	0.35	0.33
% spKt/V >= 1.2	95%	95%	95%	95%	95%	95%	95%	94%	95%	95%	95%	95%

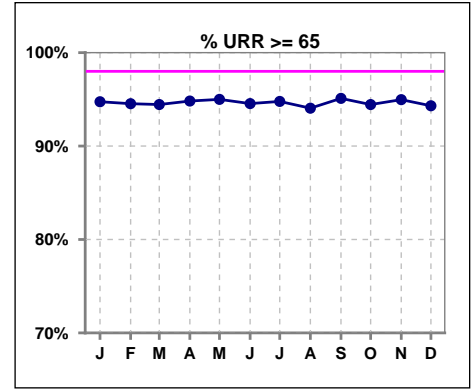


	Jan	Feb	Mar	Apr	May	Jun	Jul	Aug	Sep	Oct	Nov	Dec
# spKt/V w/ 3tx/wk	1447	1476	1453	1444	1444	1444	1445	1454	1460	1432	1442	1447
# spKt/V >= 1.2 w/3tx/wk	379	1411	1386	1378	1384	1369	1377	1376	1394	1373	1384	1380
Pop. Mean	1.62	1.63	1.63	1.61	1.61	1.62	1.63	1.60	1.62	1.62	1.64	1.63
Std. Deviation	0.31	0.32	0.32	0.32	0.31	0.33	0.36	0.31	0.31	0.33	0.33	0.32
% >= 1.2 w/3tx/wk	95%	96%	95%	95%	96%	95%	95%	95%	95%	96%	96%	95%

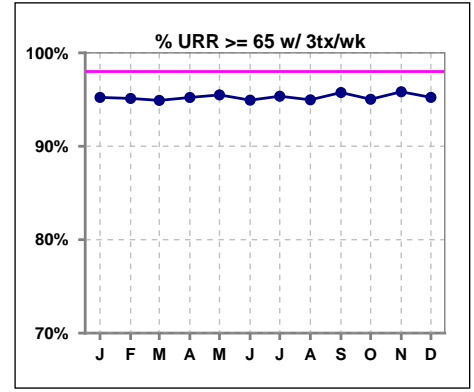


I. ADEQUACY OF DIALYSIS - CONT.

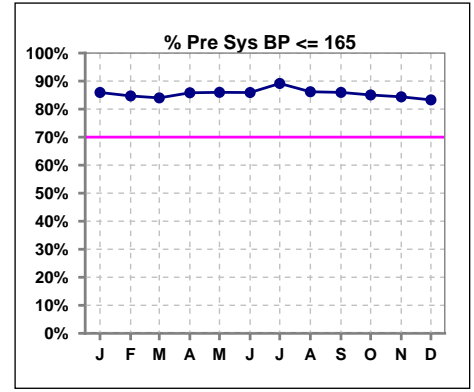
	Jan	Feb	Mar	Apr	May	Jun	Jul	Aug	Sep	Oct	Nov	Dec
# URR	1541	1573	1548	1544	1539	1540	1551	1564	1552	1547	1550	1565
# URR >= 65	1460	1487	1462	1464	1462	1456	1470	1471	1476	1461	1472	1476
Pop. Mean	75	75	75	74	74	74	75	74	74	74	75	75
Std. Deviation	6.74	6.69	6.84	6.83	6.64	6.60	6.62	7.00	6.73	6.73	6.98	6.94
% URR >= 65	95%	95%	94%	95%	95%	95%	95%	94%	95%	94%	95%	94%



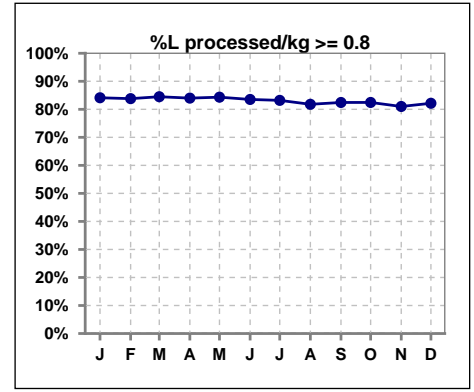
	Jan	Feb	Mar	Apr	May	Jun	Jul	Aug	Sep	Oct	Nov	Dec
# URR w/ 3tx/wk	1446	1475	1453	1444	1444	1441	1443	1452	1459	1429	1440	1447
# URR>=65 w/ 3tx/wk	1377	1403	1379	1375	1379	1368	1376	1379	1397	1358	1380	1378
Pop. Mean	75	75	75	74	74	74	75	74	75	74	75	75
Std. Deviation	6.64	6.58	6.75	6.77	6.56	6.60	6.52	6.56	6.65	6.59	6.76	6.72
% URR>=65 w/ 3tx/wk	95%	95%	95%	95%	95%	95%	95%	95%	96%	95%	96%	95%



	Jan	Feb	Mar	Apr	May	Jun	Jul	Aug	Sep	Oct	Nov	Dec
# Pre Sys BP	1557	1588	1563	1552	1549	1555	1568	1572	1560	1565	1569	1580
# Pre Sys BP <= 165	1361	1364	1334	1345	1346	1356	1409	1376	1363	1353	1341	1333
Pop. Mean	144	144	145	144	143	143	142	142	143	144	145	145
Std. Deviation	19.9	19.7	20.2	20.2	20.2	20.1	19.8	20.2	20.1	19.9	20.2	20.4
% Pre Sys BP <= 165	86%	85%	84%	86%	86%	86%	89%	86%	86%	85%	84%	83%



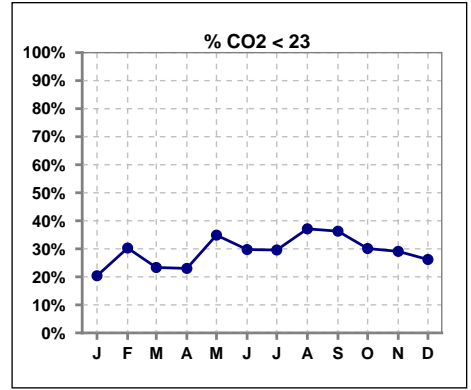
	Jan	Feb	Mar	Apr	May	Jun	Jul	Aug	Sep	Oct	Nov	Dec
# L processed/kg	1556	1587	1561	1550	1545	1548	1559	1565	1549	1556	1559	1569
# L processed/kg >= 0.8	1309	1330	1319	1302	1303	1293	1297	1280	1277	1283	1263	1289
Pop. Mean	1	1	1	1	1	1	1	1	1	1	1	1
Std. Deviation	0.4	0.3	0.3	0.3	0.3	0.3	0.4	0.3	0.6	0.3	0.3	0.3
% L processed/kg >= 0.8	84%	84%	84%	84%	84%	84%	83%	82%	82%	82%	81%	82%



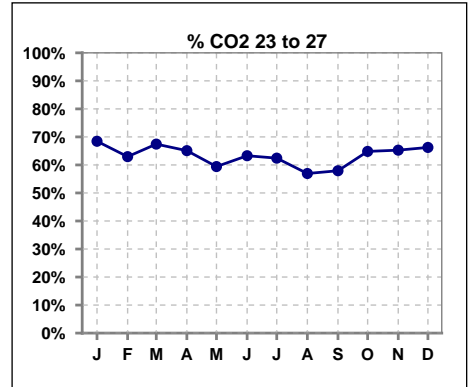
Methodology: a) All labs for 'Adequacy of Dialysis', 'Nutrition', 'Osteodystrophy', 'Anemia' and 'Diabetes' based on last value of month; b) BP's and #L processed are average of all values for month; c) Access data takes last access of month; d) Values for SGA and 'Infection Control' use most recent result.

I. ADEQUACY OF DIALYSIS - CONT.

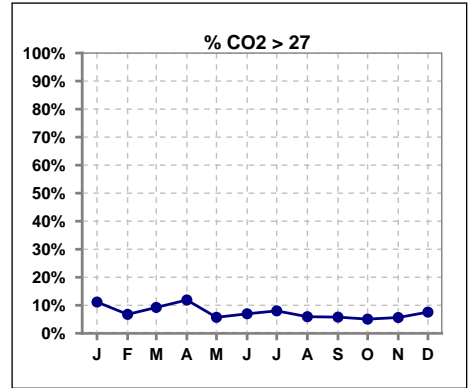
	Jan	Feb	Mar	Apr	May	Jun	Jul	Aug	Sep	Oct	Nov	Dec
# CO2	1550	1582	1560	1547	1545	1550	1562	1570	1557	1558	1561	1573
# CO2 < 23	316	479	364	356	539	461	462	583	565	469	454	412
Pop. Mean	24	24	24	24	23	24	24	23	23	24	24	24
Std. Deviation	2.76	2.85	2.73	2.99	2.78	2.78	2.81	2.79	2.75	2.59	2.75	2.76
% CO2 < 23	20%	30%	23%	23%	35%	30%	30%	37%	36%	30%	29%	26%



	Jan	Feb	Mar	Apr	May	Jun	Jul	Aug	Sep	Oct	Nov	Dec
# CO2	1550	1582	1560	1547	1545	1550	1562	1570	1557	1558	1561	1573
# CO2 23 to 27	1061	996	1052	1007	918	981	975	894	902	1010	1019	1042
Pop. Mean	24	24	24	24	23	24	24	23	23	24	24	24
Std. Deviation	2.76	2.85	2.73	2.99	2.78	2.78	2.81	2.79	2.75	2.59	2.75	2.76
% CO2 23 to 27	68%	63%	67%	65%	59%	63%	62%	57%	58%	65%	65%	66%



	Jan	Feb	Mar	Apr	May	Jun	Jul	Aug	Sep	Oct	Nov	Dec
# CO2	1550	1582	1560	1547	1545	1550	1562	1570	1557	1558	1561	1573
# CO2 > 27	173	107	144	184	88	108	125	93	90	79	88	119
Pop. Mean	24	24	24	24	23	24	24	23	23	24	24	24
Std. Deviation	2.76	2.85	2.73	2.99	2.78	2.78	2.81	2.79	2.75	2.59	2.75	2.76
% CO2 > 27	11%	7%	9%	12%	6%	7%	8%	6%	6%	5%	6%	8%

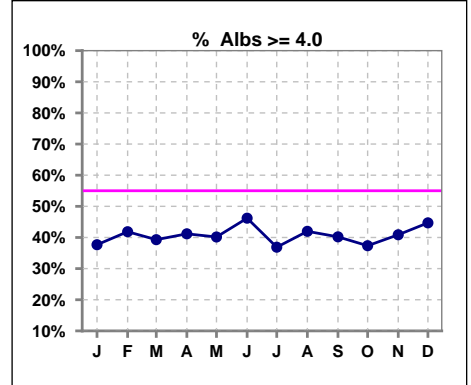


Methodology: a) All labs for 'Adequacy of Dialysis', 'Nutrition', 'Osteodystrophy', 'Anemia' and 'Diabetes' based on last value of month; b) BP's and #L processed are average of all values for month; c) Access data takes last access of month; d) Values for SGA and 'Infection Control' use most recent result.

*Albumin values use BCG method - as of July 2001

II. NUTRITION

	Jan	Feb	Mar	Apr	May	Jun	Jul	Aug	Sep	Oct	Nov	Dec
# Albumin	1550	1582	1560	1547	1544	1550	1562	1570	1557	1558	1561	1573
# Albumin >= 4.0	584	662	613	637	620	716	576	659	626	582	638	703
Pop. Mean	3.8	3.8	3.8	3.8	3.8	3.9	3.8	3.8	3.8	3.8	3.8	3.8
Std. Deviation	0.41	0.42	0.43	0.42	0.42	0.43	0.41	0.43	0.41	0.39	0.41	0.41
% Alb >= 4.0	38%	42%	39%	41%	40%	46%	37%	42%	40%	37%	41%	45%

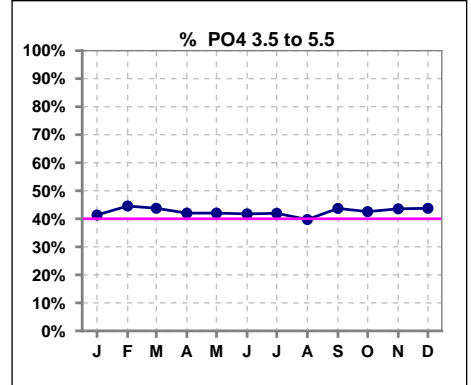


Methodology: a) All labs for 'Adequacy of Dialysis', 'Nutrition', 'Osteodystrophy', 'Anemia' and 'Diabetes' based on last value of month; b) BP's and #L processed are average of all values for month; c) Access data takes last access of month; d) Values for SGA and 'Infection Control' use most recent result.

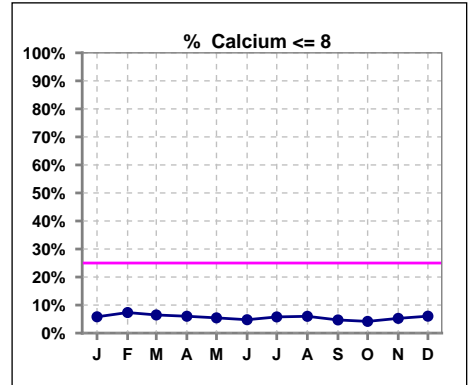
Lab methodology for PTH changed January 2012

III. OSTEODYSTROPHY

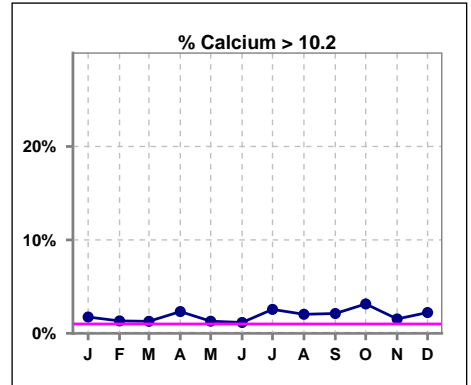
	Jan	Feb	Mar	Apr	May	Jun	Jul	Aug	Sep	Oct	Nov	Dec
# PO4	1550	1582	1559	1547	1544	1550	1561	1570	1556	1558	1561	1573
# PO4 3.5 to 5.5	641	705	682	650	649	647	655	624	680	663	680	688
Pop. Mean	5.9	5.8	5.8	5.9	5.9	5.9	5.9	6.0	5.9	5.8	5.8	5.9
Std. Deviation	1.84	1.84	1.84	1.92	1.90	1.82	1.84	1.94	1.84	1.86	1.90	1.91
% PO4 3.5 to 5.5	41%	45%	44%	42%	42%	42%	42%	40%	44%	43%	44%	44%



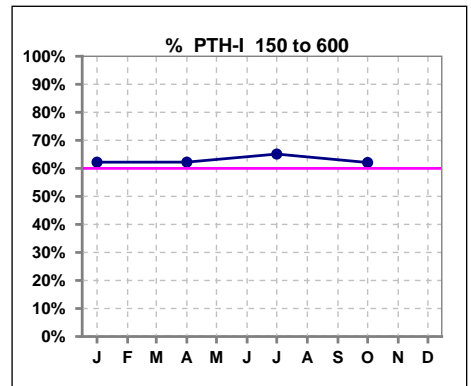
	Jan	Feb	Mar	Apr	May	Jun	Jul	Aug	Sep	Oct	Nov	Dec
# Calcium	1550	1582	1560	1547	1545	1551	1561	1570	1557	1558	1561	1573
# Calcium <= 8	90	116	101	93	84	74	90	94	73	65	82	95
Pop. Mean	9.1	9.1	9.1	9.2	9.2	9.2	9.2	9.1	9.2	9.2	9.1	9.1
Std. Deviation	0.67	0.70	0.67	0.67	0.67	0.64	0.69	0.68	0.68	0.68	0.69	0.71
% Calcium <= 8	6%	7%	6%	6%	5%	5%	6%	6%	5%	4%	5%	6%



	Jan	Feb	Mar	Apr	May	Jun	Jul	Aug	Sep	Oct	Nov	Dec
# Calcium	1550	1582	1560	1547	1545	1551	1561	1570	1557	1558	1561	1573
# Calcium > 10.2	27	21	20	36	20	18	40	32	33	49	24	35
Pop. Mean	9.1	9.1	9.1	9.2	9.2	9.2	9.2	9.1	9.2	9.2	9.1	9.1
Std. Deviation	0.67	0.70	0.67	0.67	0.67	0.64	0.69	0.68	0.68	0.68	0.69	0.71
% Calcium > 10.2	2%	1%	1%	2%	1%	1%	3%	2%	2%	3%	2%	2%



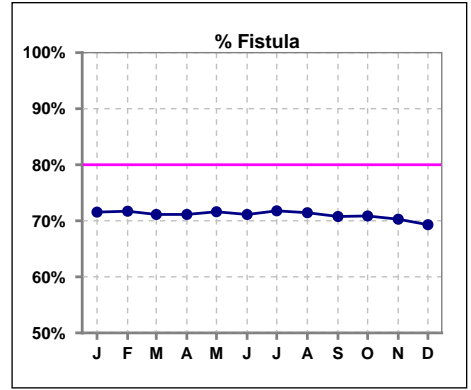
	Jan	Feb	Mar	Apr	May	Jun	Jul	Aug	Sep	Oct	Nov	Dec
# PTH-I	1548			1538			1559			1551		
# PTH-I 150 to 600	963			957			1015			963		
Pop. Mean	498			460			459			467		
Std. Deviation	465			452			453			466		
% PTH-I 150 to 600	62%			62%			65%			62%		



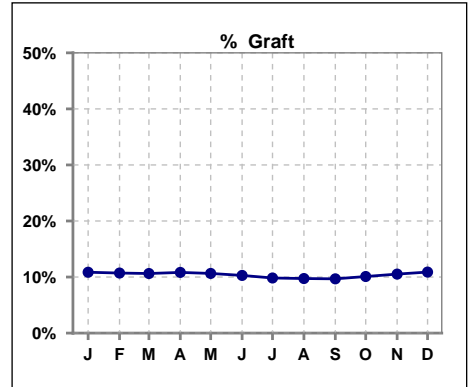
Methodology: a) All labs for 'Adequacy of Dialysis', 'Nutrition', 'Osteodystrophy', 'Anemia' and 'Diabetes' based on last value of month; b) BP's and #L processed are average of all values for month; c) Access data takes last access of month; d) Values for SGA and 'Infection Control' use most recent result.

IV. ACCESS

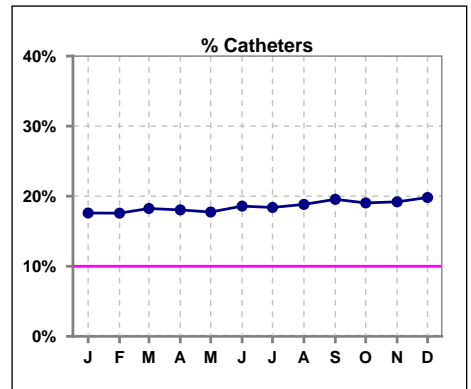
	Jan	Feb	Mar	Apr	May	Jun	Jul	Aug	Sep	Oct	Nov	Dec
# Access	1557	1587	1562	1552	1550	1555	1566	1572	1560	1565	1568	1580
# Fistula	1114	1138	1111	1104	1110	1106	1124	1123	1104	1109	1102	1095
% Fistula	72%	72%	71%	71%	72%	71%	72%	71%	71%	71%	70%	69%



	Jan	Feb	Mar	Apr	May	Jun	Jul	Aug	Sep	Oct	Nov	Dec
# Access	1557	1587	1562	1552	1550	1555	1566	1572	1560	1565	1568	1580
# Graft	169	170	166	168	165	160	154	153	151	158	165	172
% Graft	11%	11%	11%	11%	11%	10%	10%	10%	10%	10%	11%	11%



	Jan	Feb	Mar	Apr	May	Jun	Jul	Aug	Sep	Oct	Nov	Dec
# Access	1557	1587	1562	1552	1550	1555	1566	1572	1560	1565	1568	1580
# Catheters	274	279	285	280	275	289	288	296	305	298	301	313
% Catheters	18%	18%	18%	18%	18%	19%	18%	19%	20%	19%	19%	20%



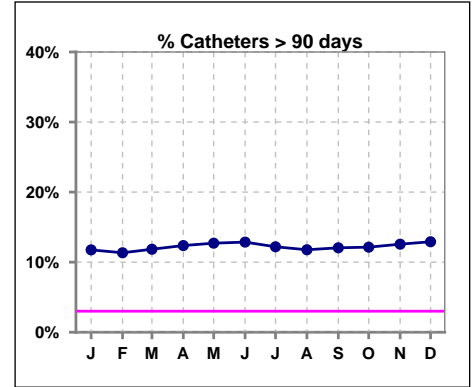
Methodology: a) All labs for 'Adequacy of Dialysis', 'Nutrition', 'Osteodystrophy', 'Anemia' and 'Diabetes' based on last value of month; b) BP's and #L processed are average of all values for month; c) Access data takes last access of month; d) Values for SGA and 'Infection Control' use most recent result.

IV. ACCESS - CONT.

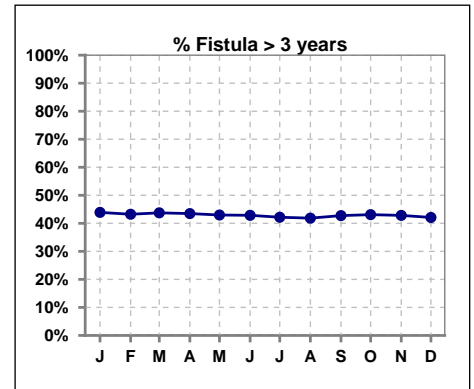
Catheters > 90 days

	Jan	Feb	Mar	Apr	May	Jun	Jul	Aug	Sep	Oct	Nov	Dec
# Access	1557	1587	1562	1552	1550	1555	1566	1572	1560	1565	1568	1580
# Catheters	183	180	185	192	197	200	191	185	188	190	197	204
% Catheters	12%	11%	12%	12%	13%	13%	12%	12%	12%	12%	13%	13%

Definition: Catheter in use on last treatment of the month



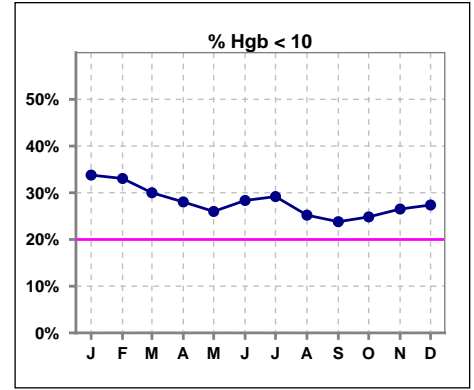
	Jan	Feb	Mar	Apr	May	Jun	Jul	Aug	Sep	Oct	Nov	Dec
# Fistula	1114	1138	1111	1104	1110	1106	1124	1123	1104	1109	1102	1095
# Fistula > 3 yrs	489	492	486	480	477	474	474	470	472	478	472	461
% Fistula > 3 yrs	44%	43%	44%	43%	43%	43%	42%	42%	43%	43%	43%	42%



V. ANEMIA

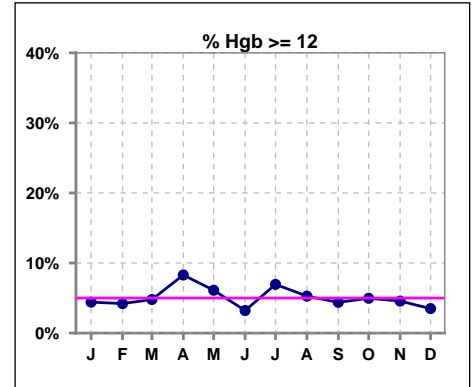
	Jan	Feb	Mar	Apr	May	Jun	Jul	Aug	Sep	Oct	Nov	Dec
# Hgb	1332	1307	1280	1291	1296	1305	1381	1309	1298	1349	1335	1344
# Hgb < 10	450	432	384	362	337	370	403	330	309	335	354	368
Pop. Mean	10.3	10.3	10.4	10.5	10.5	10.5	10.5	10.6	10.6	10.5	10.5	10.5
Std. Deviation	1.2	1.2	1.2	1.3	1.2	1.2	1.2	1.2	1.2	1.2	1.2	1.1
% Hgb < 10	34%	33%	30%	28%	26%	28%	29%	25%	24%	25%	27%	27%

Note: Excludes patients who received no ESA in month.



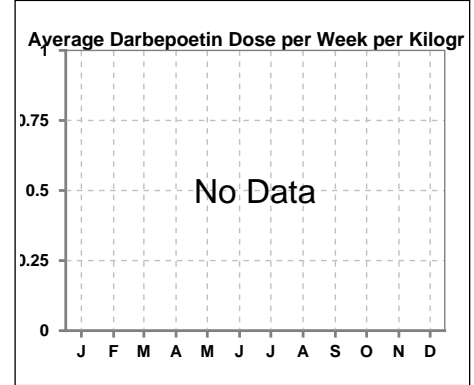
	Jan	Feb	Mar	Apr	May	Jun	Jul	Aug	Sep	Oct	Nov	Dec
# Hgb	1312	1307	1274	1291	1292	1305	1381	1309	1298	1349	1335	1344
# Hgb >= 12	58	55	61	107	79	42	96	69	57	67	61	47
Pop. Mean	10.3	10.3	10.4	10.5	10.5	10.5	10.5	10.6	10.6	10.5	10.5	10.5
Std. Deviation	1.2	1.2	1.2	1.3	1.2	1.2	1.2	1.2	1.2	1.2	1.2	1.1
% Hgb >= 12	4%	4%	5%	8%	6%	3%	7%	5%	4%	5%	5%	3%

Note: Excludes patients who received no ESA in month.



Average Darbepoetin Dose per Week per Kilogram

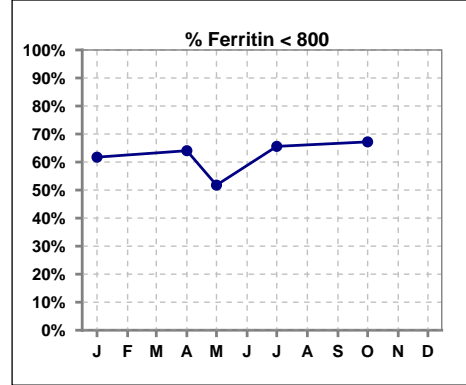
	Jan	Feb	Mar	Apr	May	Jun	Jul	Aug	Sep	Oct	Nov	Dec
# Average Darbepoetin												



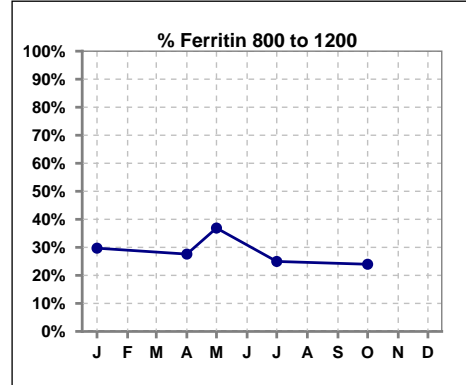
V. ANEMIA - CONT.

Iron Profile

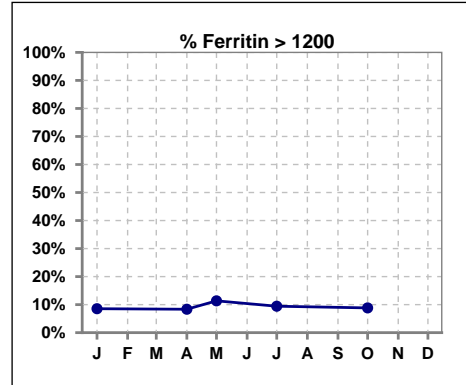
	Jan	Feb	Mar	Apr	May	Jun	Jul	Aug	Sep	Oct	Nov	Dec
# Ferritin	1545			1544	141		1558			1552		
# Ferritin < 800	954			989	73		1022			1043		
Pop. Mean	733			695	791		684			667		
Std. Deviation	487			441	849		461			486		
% Ferritin < 800	62%			64%	52%		66%			67%		



	Jan	Feb	Mar	Apr	May	Jun	Jul	Aug	Sep	Oct	Nov	Dec
# Ferritin	1545			1544	141		1558			1552		
# Ferritin 800 to 1200	459			426	52		389			372		
Pop. Mean	733			695	791		684			667		
Std. Deviation	487			441	849		461			486		
% Ferritin 800 to 1200	30%			28%	37%		25%			24%		

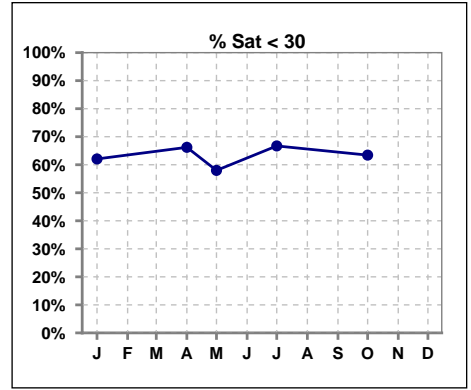


	Jan	Feb	Mar	Apr	May	Jun	Jul	Aug	Sep	Oct	Nov	Dec
# Ferritin	1545			1544	141		1558			1552		
# Ferritin > 1200	132			129	16		147			137		
Pop. Mean	733			695	791		684			667		
Std. Deviation	487			441	849		461			486		
% Ferritin > 1200	9%			8%	11%		9%			9%		

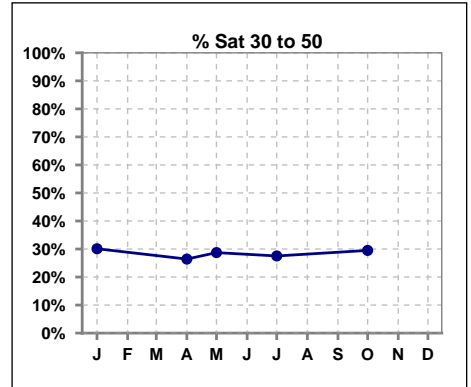


V. ANEMIA - CONT.

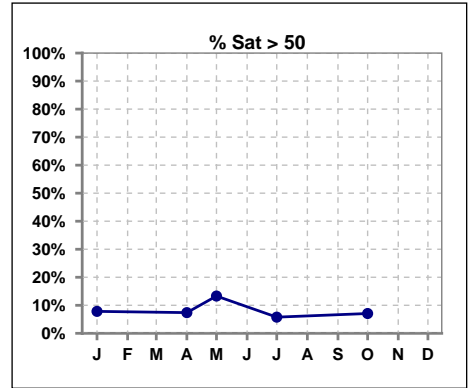
	Jan	Feb	Mar	Apr	May	Jun	Jul	Aug	Sep	Oct	Nov	Dec
# % Sat	1545			1545	188		1559			1556		
# % Sat < 30	959			1023	109		1040			987		
Pop. Mean	29			28	32		27			29		
Std. Deviation	15			15	20		14			15		
% % Sat < 30	62%			66%	58%		67%			63%		



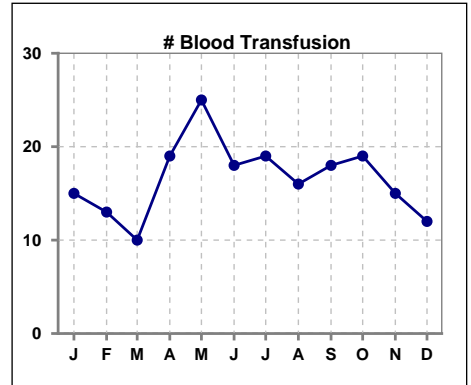
	Jan	Feb	Mar	Apr	May	Jun	Jul	Aug	Sep	Oct	Nov	Dec
# % Sat	1545			1545	188		1559			1556		
# % Sat 30 to 50	465			408	54		429			459		
Pop. Mean	29			28	32		27			29		
Std. Deviation	15			15	20		14			15		
% % Sat 30 to 50	30%			26%	29%		28%			29%		



	Jan	Feb	Mar	Apr	May	Jun	Jul	Aug	Sep	Oct	Nov	Dec
# % Sat	1545			1545	188		1559			1556		
# % Sat > 50	121			114	25		90			110		
Pop. Mean	29			28	32		27			29		
Std. Deviation	15			15	20		14			15		
% % Sat > 50	8%			7%	13%		6%			7%		



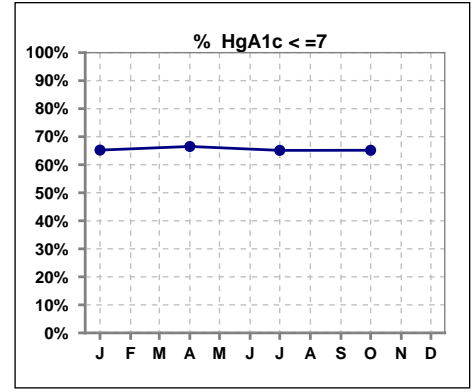
	Jan	Feb	Mar	Apr	May	Jun	Jul	Aug	Sep	Oct	Nov	Dec
# Patient	1560	1595	1569	1556	1555	1562	1571	1575	1560	1566	1576	1583
# Blood Transfusion	15	13	10	19	25	18	19	16	18	19	15	12



Methodology: a) All labs for 'Adequacy of Dialysis', 'Nutrition', 'Osteodystrophy', 'Anemia' and 'Diabetes' based on last value of month; b) BP's and #L processed are average of all values for month; c) Access data takes last access of month; d) Values for SGA and 'Infection Control' use most recent result.

VI. Diabetes

	Jan	Feb	Mar	Apr	May	Jun	Jul	Aug	Sep	Oct	Nov	Dec
# HgA1c	926			926			929			930		
# HgA1c <= 7	604			616			605			606		
Pop. Mean	6.8			6.7			6.7			6.8		
Std. Deviation	1.53			1.48			1.50			1.54		
% HgA1c <= 7	65%			67%			65%			65%		

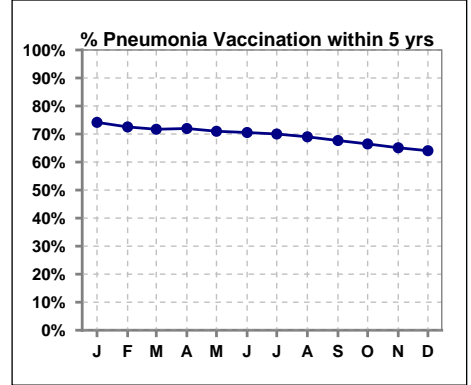


Methodology: a) All labs for 'Adequacy of Dialysis', 'Nutrition', 'Osteodystrophy', 'Anemia' and 'Diabetes' based on last value of month; b) BP's and #L processed are average of all values for month; c) Access data takes last access of month; d) Values for SGA and 'Infection Control' use most recent result.

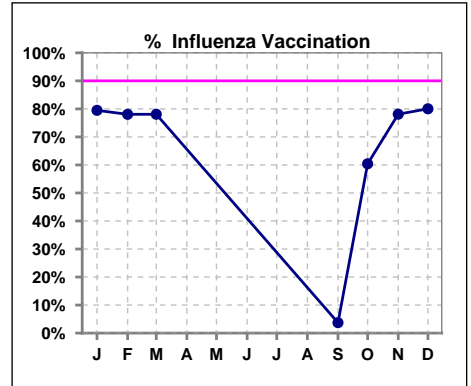
VII. Infection Control

Pneumonia vaccination within the past five years

	Jan	Feb	Mar	Apr	May	Jun	Jul	Aug	Sep	Oct	Nov	Dec
# Patient	1560	1595	1569	1556	1555	1562	1571	1575	1560	1566	1576	1583
# Pneumonia	1157	1157	1125	1120	1104	1102	1100	1087	1056	1041	1026	1014
% Pneumonia	74%	73%	72%	72%	71%	71%	70%	69%	68%	66%	65%	64%



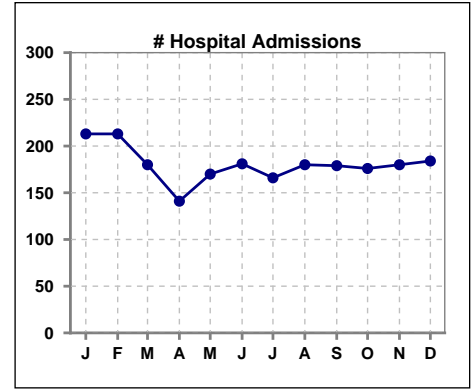
	Jan	Feb	Mar	Apr	May	Jun	Jul	Aug	Sep	Oct	Nov	Dec
# Patient	1560	1595	1569						1560	1566	1576	1583
# Influenza	1240	1245	1225						58	946	1231	1267
% Influenza	79%	78%	78%						4%	60%	78%	80%



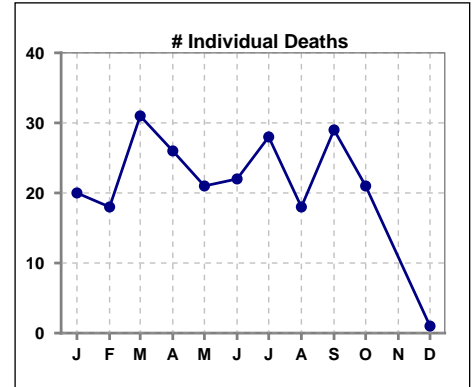
Methodology: a) All labs for 'Adequacy of Dialysis', 'Nutrition', 'Osteodystrophy', 'Anemia' and 'Diabetes' based on last value of month; b) BP's and #L processed are average of all values for month; c) Access data takes last access of month; d) Values for SGA and 'Infection Control' use most recent result.

VIII. Outcome measures

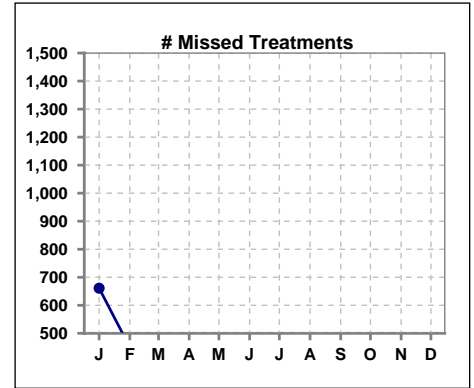
	Jan	Feb	Mar	Apr	May	Jun	Jul	Aug	Sep	Oct	Nov	Dec
# Patient	1560	1595	1569	1556	1555	1562	1571	1575	1560	1566	1576	1583
# Hospital Admissions	213	213	180	141	170	181	166	180	179	176	180	184



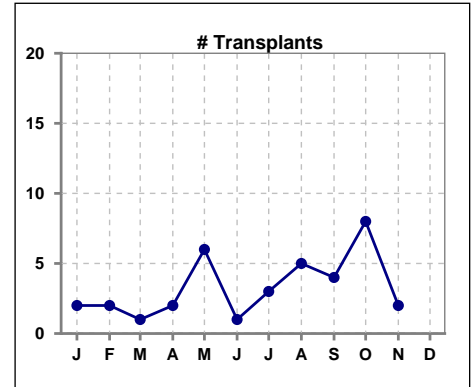
	Jan	Feb	Mar	Apr	May	Jun	Jul	Aug	Sep	Oct	Nov	Dec
# Patient	1560	1595	1569	1556	1555	1562	1571	1575	1560	1566	1576	1583
# Individual Deaths	20	18	31	26	21	22	28	18	29	21		1



	Jan	Feb	Mar	Apr	May	Jun	Jul	Aug	Sep	Oct	Nov	Dec
# Patient	1560	1595	1569	1556	1555	1562	1571	1575	1560	1566	1576	1583
# Missed Treatments	661	450	443	406	400	335	351	344	317	301	355	409



	Jan	Feb	Mar	Apr	May	Jun	Jul	Aug	Sep	Oct	Nov	Dec
# Patient	1560	1595	1569	1556	1555	1562	1571	1575	1560	1566	1576	1583
# Transplants	2	2	1	2	6	1	3	5	4	8	2	



Methodology: a) All labs for 'Adequacy of Dialysis', 'Nutrition', 'Osteodystrophy', 'Anemia' and 'Diabetes' based on last value of month; b) BP's and #L processed are average of all values for month; c) Access data takes last access of month; d) Values for SGA and 'Infection Control' use most recent result.