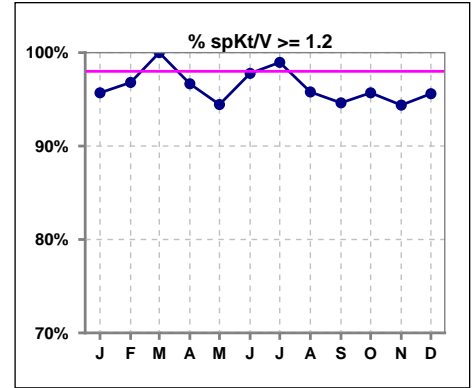
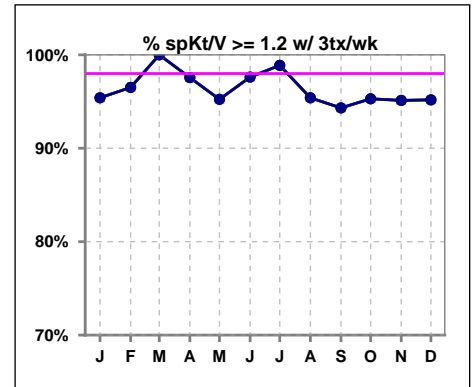


I. ADEQUACY OF DIALYSIS

	Jan	Feb	Mar	Apr	May	Jun	Jul	Aug	Sep	Oct	Nov	Dec
# spKt/V	93	94	90	90	90	90	96	95	93	93	89	91
# spKt/V >= 1.2	89	91	90	87	85	88	95	91	88	89	84	87
Pop. Mean	1.59	1.62	1.66	1.62	1.61	1.63	1.63	1.61	1.61	1.59	1.64	1.66
Std. Deviation	0.29	0.32	0.28	0.27	0.29	0.26	0.28	0.29	0.33	0.29	0.35	0.31
% spKt/V >= 1.2	96%	97%	100%	97%	94%	98%	99%	96%	95%	96%	94%	96%

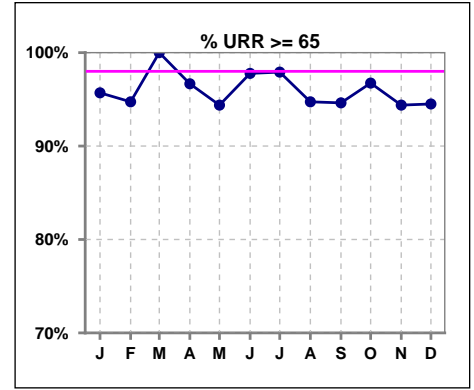


	Jan	Feb	Mar	Apr	May	Jun	Jul	Aug	Sep	Oct	Nov	Dec
# spKt/V w/ 3tx/wk	87	86	84	82	84	84	89	87	88	85	82	83
# spKt/V >= 1.2 w/3tx/wk	83	83	84	80	80	82	88	83	83	81	78	79
Pop. Mean	1.60	1.63	1.66	1.64	1.61	1.64	1.63	1.63	1.61	1.59	1.66	1.67
Std. Deviation	0.29	0.31	0.28	0.27	0.28	0.26	0.28	0.30	0.33	0.29	0.35	0.31
% >= 1.2 w/3tx/wk	95%	97%	100%	98%	95%	98%	99%	95%	94%	95%	95%	95%

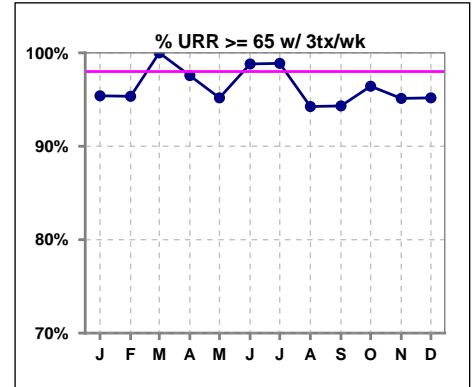


I. ADEQUACY OF DIALYSIS - CONT.

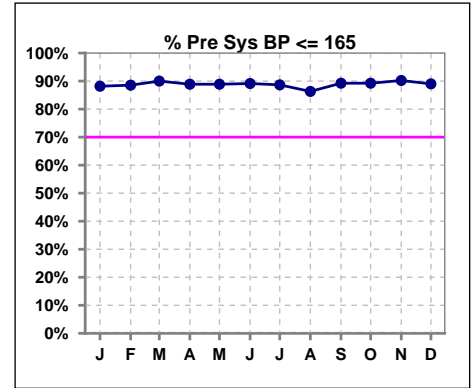
	Jan	Feb	Mar	Apr	May	Jun	Jul	Aug	Sep	Oct	Nov	Dec
# URR	93	95	90	90	89	90	96	95	93	92	89	91
# URR >= 65	89	90	90	87	84	88	94	90	88	89	84	86
Pop. Mean	74	75	76	75	75	75	75	75	74	74	75	75
Std. Deviation	6.57	6.85	5.41	5.86	6.12	5.25	5.58	6.02	7.38	6.39	6.83	6.41
% URR >= 65	96%	95%	100%	97%	94%	98%	98%	95%	95%	97%	94%	95%



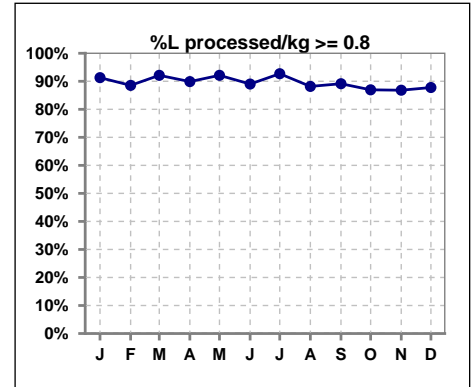
	Jan	Feb	Mar	Apr	May	Jun	Jul	Aug	Sep	Oct	Nov	Dec
# URR w/ 3tx/wk	87	86	84	82	83	84	89	87	88	84	82	83
# URR>=65 w/ 3tx/wk	83	82	84	80	79	83	88	82	83	81	78	79
Pop. Mean	74	75	76	75	75	75	75	75	74	74	75	76
Std. Deviation	6.75	6.48	5.38	5.86	6.07	5.23	5.59	6.14	7.51	6.54	6.81	6.35
% URR>=65 w/ 3tx/wk	95%	95%	100%	98%	95%	99%	99%	94%	94%	96%	95%	95%



	Jan	Feb	Mar	Apr	May	Jun	Jul	Aug	Sep	Oct	Nov	Dec
# Pre Sys BP	93	96	90	90	90	92	97	95	93	93	92	91
# Pre Sys BP <= 165	82	86	83	80	81	83	86	85	84	83	83	81
Pop. Mean	141	141	141	140	139	138	140	142	143	142	143	143
Std. Deviation	19.3	20.3	19.3	19.4	21.2	19.0	19.3	19.7	18.6	19.9	18.7	18.5
% Pre Sys BP <=165	88%	89%	90%	89%	89%	89%	89%	86%	89%	89%	90%	89%



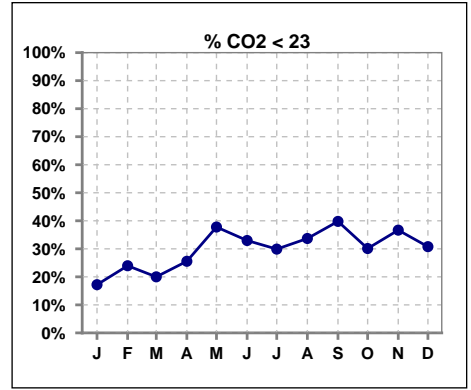
	Jan	Feb	Mar	Apr	May	Jun	Jul	Aug	Sep	Oct	Nov	Dec
# L processed/kg	92	96	89	89	89	91	96	93	92	92	91	90
# L processed/kg>=0.8	84	85	82	80	82	81	89	82	82	80	79	79
Pop. Mean	1	1	1	1	1	1	1	1	1	1	1	1
Std. Deviation	0.3	0.3	0.3	0.3	0.3	0.3	0.2	0.3	0.3	0.3	0.3	0.3
% L processed/kg>=0.8	91%	89%	92%	90%	92%	89%	93%	88%	89%	87%	87%	88%



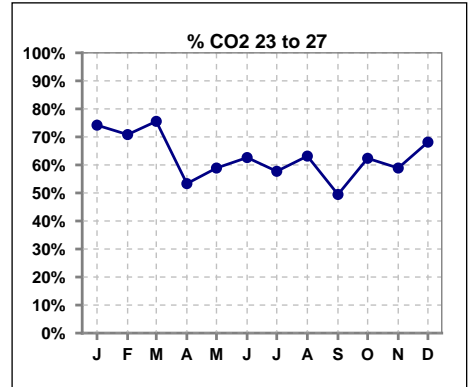
Methodology: a) All labs for 'Adequacy of Dialysis', 'Nutrition', 'Osteodystrophy', 'Anemia' and 'Diabetes' based on last value of month; b) BP's and #L processed are average of all values for month; c) Access data takes last access of month; d) Values for SGA and 'Infection Control' use most recent result.

I. ADEQUACY OF DIALYSIS - CONT.

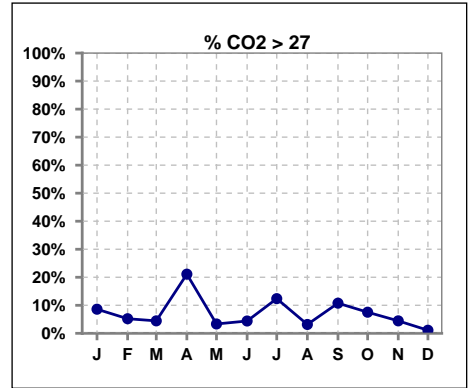
	Jan	Feb	Mar	Apr	May	Jun	Jul	Aug	Sep	Oct	Nov	Dec
# CO2	93	96	90	90	90	91	97	95	93	93	90	91
# CO2 < 23	16	23	18	23	34	30	29	32	37	28	33	28
Pop. Mean	24	24	24	25	23	23	24	23	23	23	23	23
Std. Deviation	2.54	2.76	2.27	3.38	2.41	2.71	2.91	2.58	3.31	2.87	2.74	2.54
% CO2 < 23	17%	24%	20%	26%	38%	33%	30%	34%	40%	30%	37%	31%



	Jan	Feb	Mar	Apr	May	Jun	Jul	Aug	Sep	Oct	Nov	Dec
# CO2	93	96	90	90	90	91	97	95	93	93	90	91
# CO2 23 to 27	69	68	68	48	53	57	56	60	46	58	53	62
Pop. Mean	24	24	24	25	23	23	24	23	23	23	23	23
Std. Deviation	2.54	2.76	2.27	3.38	2.41	2.71	2.91	2.58	3.31	2.87	2.74	2.54
% CO2 23 to 27	74%	71%	76%	53%	59%	63%	58%	63%	49%	62%	59%	68%



	Jan	Feb	Mar	Apr	May	Jun	Jul	Aug	Sep	Oct	Nov	Dec
# CO2	93	96	90	90	90	91	97	95	93	93	90	91
# CO2 > 27	8	5	4	19	3	4	12	3	10	7	4	1
Pop. Mean	24	24	24	25	23	23	24	23	23	23	23	23
Std. Deviation	2.54	2.76	2.27	3.38	2.41	2.71	2.91	2.58	3.31	2.87	2.74	2.54
% CO2 > 27	9%	5%	4%	21%	3%	4%	12%	3%	11%	8%	4%	1%

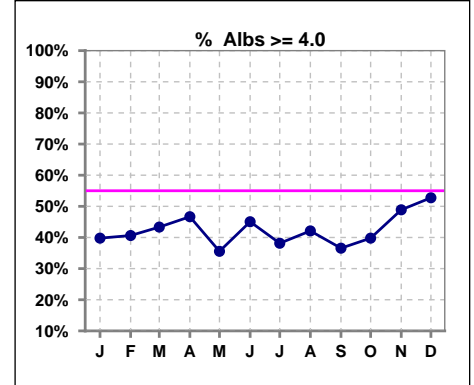


Methodology: a) All labs for 'Adequacy of Dialysis', 'Nutrition', 'Osteodystrophy', 'Anemia' and 'Diabetes' based on last value of month; b) BP's and #L processed are average of all values for month; c) Access data takes last access of month; d) Values for SGA and 'Infection Control' use most recent result.

*Albumin values use BCG method - as of July 2001

II. NUTRITION

	Jan	Feb	Mar	Apr	May	Jun	Jul	Aug	Sep	Oct	Nov	Dec
# Albumin	93	96	90	90	90	91	97	95	93	93	90	91
# Albumin >= 4.0	37	39	39	42	32	41	37	40	34	37	44	48
Pop. Mean	3.8	3.9	3.9	3.9	3.8	3.9	3.8	3.9	3.8	3.8	3.9	3.9
Std. Deviation	0.39	0.42	0.39	0.36	0.38	0.38	0.39	0.34	0.38	0.40	0.45	0.37
% Alb >= 4.0	40%	41%	43%	47%	36%	45%	38%	42%	37%	40%	49%	53%

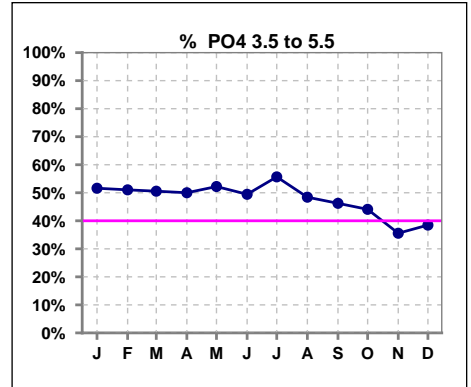


Methodology: a) All labs for 'Adequacy of Dialysis', 'Nutrition', 'Osteodystrophy', 'Anemia' and 'Diabetes' based on last value of month; b) BP's and #L processed are average of all values for month; c) Access data takes last access of month; d) Values for SGA and 'Infection Control' use most recent result.

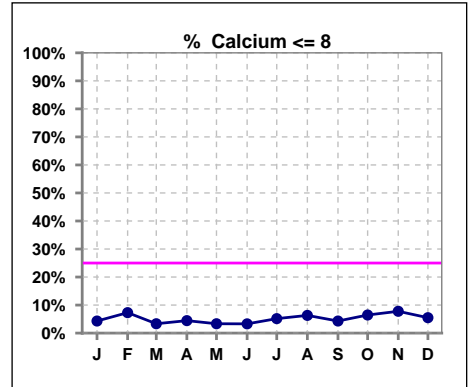
Lab methodology for PTH changed January 2012

III. OSTEODYSTROPHY

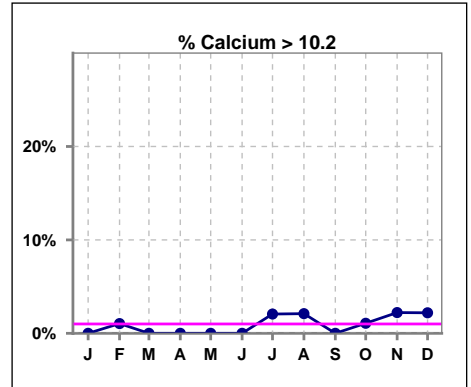
	Jan	Feb	Mar	Apr	May	Jun	Jul	Aug	Sep	Oct	Nov	Dec
# PO4	93	96	89	90	90	91	97	95	93	93	90	91
# PO4 3.5 to 5.5	48	49	45	45	47	45	54	46	43	41	32	35
Pop. Mean	5.6	5.5	5.3	5.5	5.6	5.5	5.5	5.7	5.8	5.7	5.8	6.1
Std. Deviation	1.55	1.67	1.40	1.42	1.67	1.32	1.43	1.73	1.52	1.58	1.91	1.85
% PO4 3.5 to 5.5	52%	51%	51%	50%	52%	49%	56%	48%	46%	44%	36%	38%



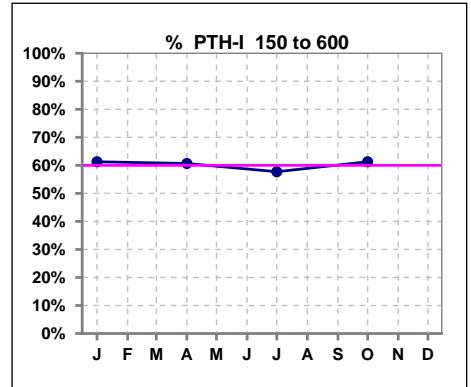
	Jan	Feb	Mar	Apr	May	Jun	Jul	Aug	Sep	Oct	Nov	Dec
# Calcium	93	96	90	90	90	91	97	95	93	93	90	91
# Calcium <= 8	4	7	3	4	3	3	5	6	4	6	7	5
Pop. Mean	9.2	9.2	9.3	9.2	9.2	9.3	9.2	9.2	9.2	9.2	9.1	9.2
Std. Deviation	0.68	0.65	0.63	0.58	0.59	0.56	0.63	0.70	0.67	0.71	0.67	0.68
% Calcium <= 8	4%	7%	3%	4%	3%	3%	5%	6%	4%	6%	8%	5%



	Jan	Feb	Mar	Apr	May	Jun	Jul	Aug	Sep	Oct	Nov	Dec
# Calcium	93	96	90	90	90	91	97	95	93	93	90	91
# Calcium > 10.2	0	1	0	0	0	0	2	2	0	1	2	2
Pop. Mean	9.2	9.2	9.3	9.2	9.2	9.3	9.2	9.2	9.2	9.2	9.1	9.2
Std. Deviation	0.68	0.65	0.63	0.58	0.59	0.56	0.63	0.70	0.67	0.71	0.67	0.68
% Calcium > 10.2	0%	1%	0%	0%	0%	0%	2%	2%	0%	1%	2%	2%



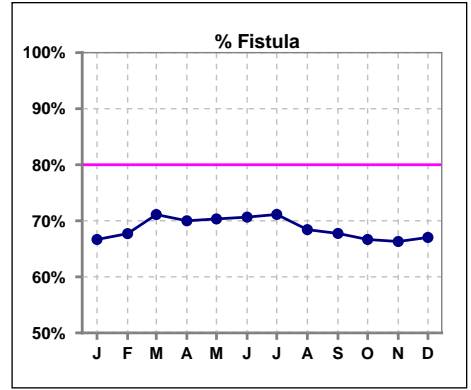
	Jan	Feb	Mar	Apr	May	Jun	Jul	Aug	Sep	Oct	Nov	Dec
# PTH-I	93			89			97			93		
# PTH-I 150 to 600	57			54			56			57		
Pop. Mean	548			476			509			548		
Std. Deviation	574			437			482			535		
% PTH-I 150 to 600	61%			61%			58%			61%		



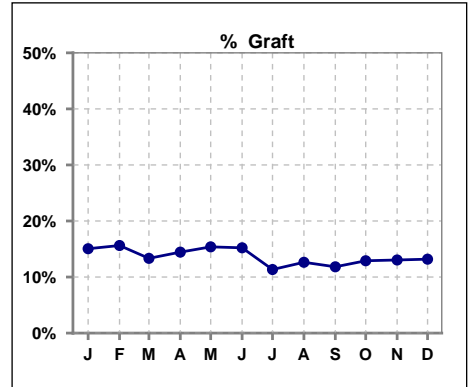
Methodology: a) All labs for 'Adequacy of Dialysis', 'Nutrition', 'Osteodystrophy', 'Anemia' and 'Diabetes' based on last value of month; b) BP's and #L processed are average of all values for month; c) Access data takes last access of month; d) Values for SGA and 'Infection Control' use most recent result.

IV. ACCESS

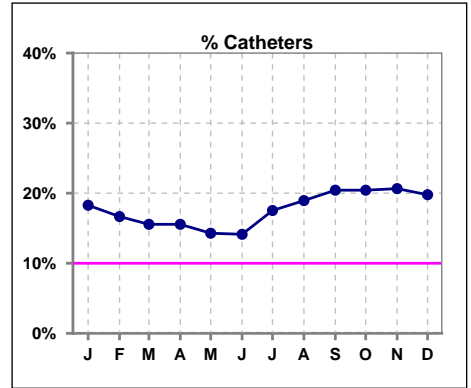
	Jan	Feb	Mar	Apr	May	Jun	Jul	Aug	Sep	Oct	Nov	Dec
# Access	93	96	90	90	91	92	97	95	93	93	92	91
# Fistula	62	65	64	63	64	65	69	65	63	62	61	61
% Fistula	67%	68%	71%	70%	70%	71%	71%	68%	68%	67%	66%	67%



	Jan	Feb	Mar	Apr	May	Jun	Jul	Aug	Sep	Oct	Nov	Dec
# Access	93	96	90	90	91	92	97	95	93	93	92	91
# Graft	14	15	12	13	14	14	11	12	11	12	12	12
% Graft	15%	16%	13%	14%	15%	15%	11%	13%	12%	13%	13%	13%



	Jan	Feb	Mar	Apr	May	Jun	Jul	Aug	Sep	Oct	Nov	Dec
# Access	93	96	90	90	91	92	97	95	93	93	92	91
# Catheters	17	16	14	14	13	13	17	18	19	19	19	18
% Catheters	18%	17%	16%	16%	14%	14%	18%	19%	20%	20%	21%	20%



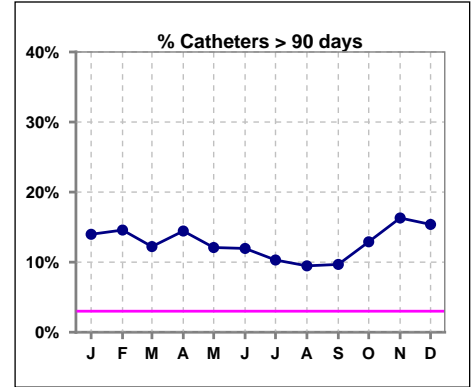
Methodology: a) All labs for 'Adequacy of Dialysis', 'Nutrition', 'Osteodystrophy', 'Anemia' and 'Diabetes' based on last value of month; b) BP's and #L processed are average of all values for month; c) Access data takes last access of month; d) Values for SGA and 'Infection Control' use most recent result.

IV. ACCESS - CONT.

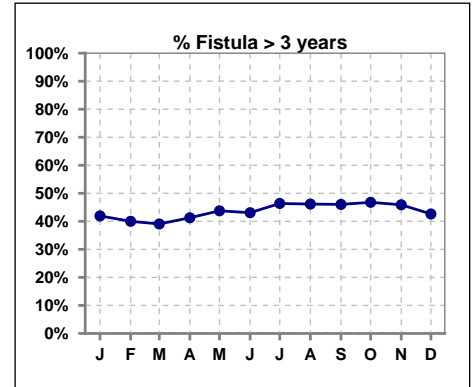
Catheters > 90 days

	Jan	Feb	Mar	Apr	May	Jun	Jul	Aug	Sep	Oct	Nov	Dec
# Access	93	96	90	90	91	92	97	95	93	93	92	91
# Catheters	13	14	11	13	11	11	10	9	9	12	15	14
% Catheters	14%	15%	12%	14%	12%	12%	10%	9%	10%	13%	16%	15%

Definition: Catheter in use on last treatment of the month



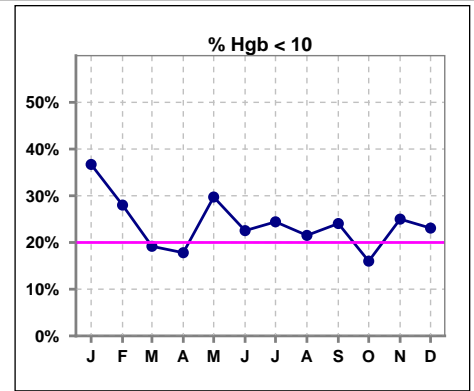
	Jan	Feb	Mar	Apr	May	Jun	Jul	Aug	Sep	Oct	Nov	Dec
# Fistula	62	65	64	63	64	65	69	65	63	62	61	61
# Fistula > 3 yrs	26	26	25	26	28	28	32	30	29	29	28	26
% Fistula > 3 yrs	42%	40%	39%	41%	44%	43%	46%	46%	46%	47%	46%	43%



V. ANEMIA

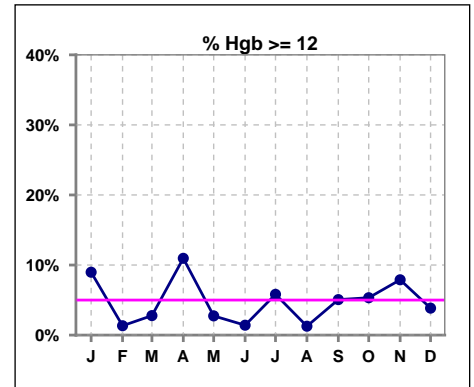
	Jan	Feb	Mar	Apr	May	Jun	Jul	Aug	Sep	Oct	Nov	Dec
# Hgb	79	75	73	73	74	71	86	79	79	75	76	78
# Hgb < 10	29	21	14	13	22	16	21	17	19	12	19	18
Pop. Mean	10.5	10.4	10.6	10.7	10.4	10.4	10.5	10.6	10.7	10.6	10.6	10.6
Std. Deviation	1.4	1.1	1.1	1.4	1.2	1.1	1.2	1.0	1.1	1.0	1.2	1.2
% Hgb < 10	37%	28%	19%	18%	30%	23%	24%	22%	24%	16%	25%	23%

Note: Excludes patients who received no ESA in month.



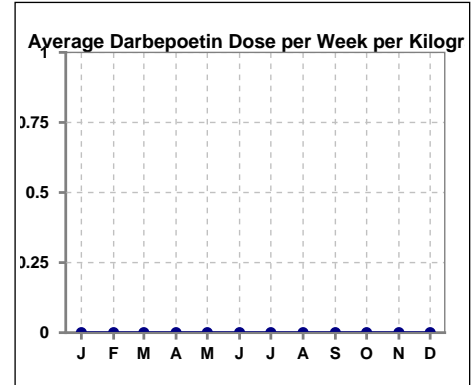
	Jan	Feb	Mar	Apr	May	Jun	Jul	Aug	Sep	Oct	Nov	Dec
# Hgb	78	75	72	73	73	71	86	79	79	75	76	78
# Hgb >= 12	7	1	2	8	2	1	5	1	4	4	6	3
Pop. Mean	10.6	10.4	10.6	10.7	10.4	10.4	10.5	10.6	10.7	10.6	10.6	10.6
Std. Deviation	1.3	1.1	1.1	1.4	1.2	1.1	1.2	1.0	1.1	1.0	1.2	1.2
% Hgb >= 12	9%	1%	3%	11%	3%	1%	6%	1%	5%	5%	8%	4%

Note: Excludes patients who received no ESA in month.



Average Darbepoetin Dose per Week per Kilogram

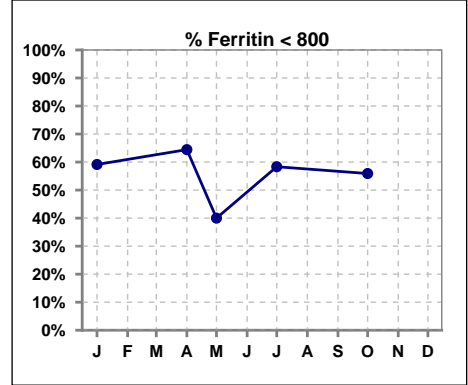
	Jan	Feb	Mar	Apr	May	Jun	Jul	Aug	Sep	Oct	Nov	Dec
# Average Darbepoetin	0	0	0	0	0	0	0	0	0	0	0	0



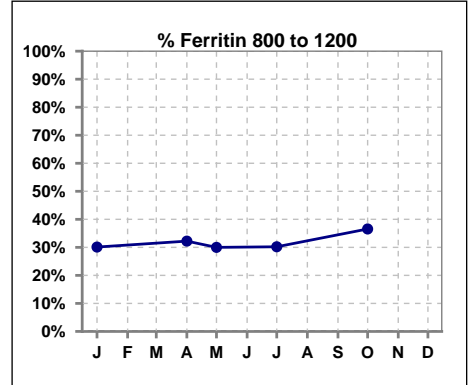
V. ANEMIA - CONT.

Iron Profile

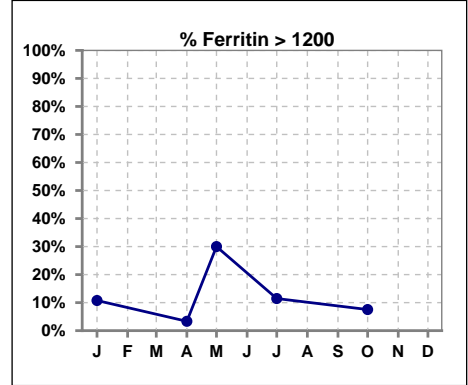
	Jan	Feb	Mar	Apr	May	Jun	Jul	Aug	Sep	Oct	Nov	Dec
# Ferritin	93			90	10		96			93		
# Ferritin < 800	55			58	4		56			52		
Pop. Mean	794			753	1753		826			842		
Std. Deviation	884			953	2810		940			1124		
% Ferritin < 800	59%			64%	40%		58%			56%		



	Jan	Feb	Mar	Apr	May	Jun	Jul	Aug	Sep	Oct	Nov	Dec
# Ferritin	93			90	10		96			93		
# Ferritin 800 to 1200	28			29	3		29			34		
Pop. Mean	794			753	1753		826			842		
Std. Deviation	884			953	2810		940			1124		
% Ferritin 800 to 1200	30%			32%	30%		30%			37%		



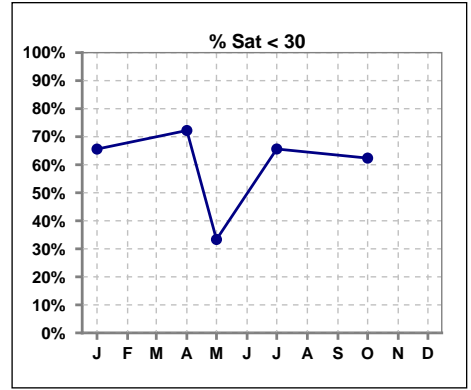
	Jan	Feb	Mar	Apr	May	Jun	Jul	Aug	Sep	Oct	Nov	Dec
# Ferritin	93			90	10		96			93		
# Ferritin > 1200	10			3	3		11			7		
Pop. Mean	794			753	1753		826			842		
Std. Deviation	884			953	2810		940			1124		
% Ferritin > 1200	11%			3%	30%		11%			8%		



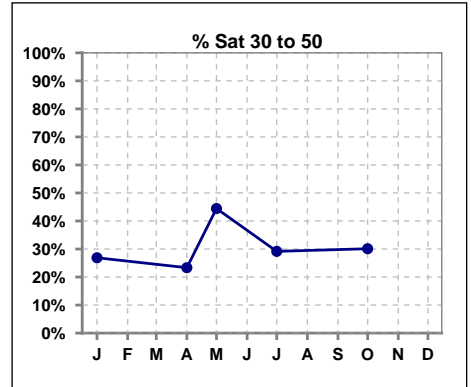
Methodology: a) All labs for 'Adequacy of Dialysis', 'Nutrition', 'Osteodystrophy', 'Anemia' and 'Diabetes' based on last value of month; b) BP's and #L processed are average of all values for month; c) Access data takes last access of month; d) Values for SGA and 'Infection Control' use most recent result.

V. ANEMIA - CONT.

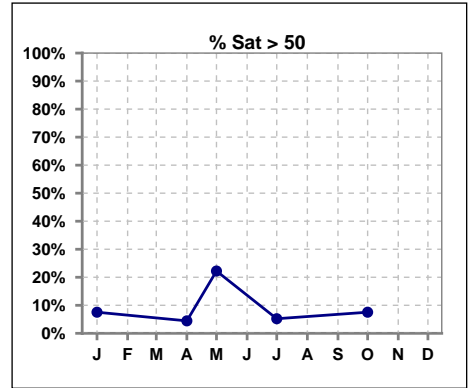
	Jan	Feb	Mar	Apr	May	Jun	Jul	Aug	Sep	Oct	Nov	Dec
# % Sat	93			90	9		96			93		
# % Sat < 30	61			65	3		63			58		
Pop. Mean	28			27	46		28			28		
Std. Deviation	16			16	38		16			15		
%% Sat < 30	66%			72%	33%		66%			62%		



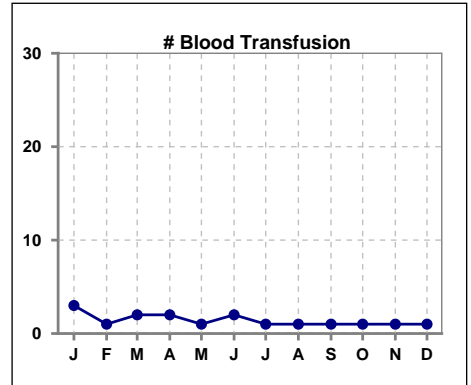
	Jan	Feb	Mar	Apr	May	Jun	Jul	Aug	Sep	Oct	Nov	Dec
# % Sat	93			90	9		96			93		
# % Sat 30 to 50	25			21	4		28			28		
Pop. Mean	28			27	46		28			28		
Std. Deviation	16			16	38		16			15		
%% Sat 30 to 50	27%			23%	44%		29%			30%		



	Jan	Feb	Mar	Apr	May	Jun	Jul	Aug	Sep	Oct	Nov	Dec
# % Sat	93			90	9		96			93		
# % Sat > 50	7			4	2		5			7		
Pop. Mean	28			27	46		28			28		
Std. Deviation	16			16	38		16			15		
%% Sat > 50	8%			4%	22%		5%			8%		



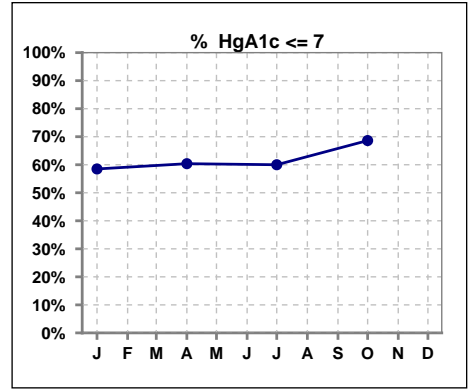
	Jan	Feb	Mar	Apr	May	Jun	Jul	Aug	Sep	Oct	Nov	Dec
# Patient	93	97	90	90	91	93	97	95	93	93	92	91
# Blood Transfusion	3	1	2	2	1	2	1	1	1	1	1	1



Methodology: a) All labs for 'Adequacy of Dialysis', 'Nutrition', 'Osteodystrophy', 'Anemia' and 'Diabetes' based on last value of month; b) BP's and #L processed are average of all values for month; c) Access data takes last access of month; d) Values for SGA and 'Infection Control' use most recent result.

VI. Diabetes

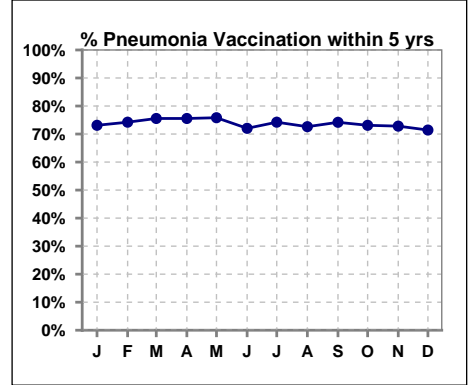
	Jan	Feb	Mar	Apr	May	Jun	Jul	Aug	Sep	Oct	Nov	Dec
# HgA1c	53			53			55			51		
# HgA1c <= 7	31			32			33			35		
Pop. Mean	6.8			6.7			6.8			6.6		
Std. Deviation	1.30			1.22			1.34			1.06		
% HgA1c <= 7	58%			60%			60%			69%		



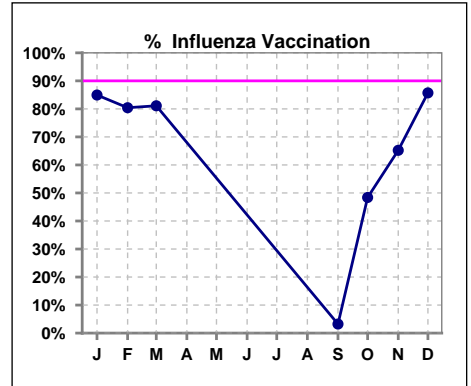
VII. Infection Control

Pneumonia vaccination within the past five years

	Jan	Feb	Mar	Apr	May	Jun	Jul	Aug	Sep	Oct	Nov	Dec
# Patient	93	97	90	90	91	93	97	95	93	93	92	91
# Pneumonia	68	72	68	68	69	67	72	69	69	68	67	65
% Pneumonia	73%	74%	76%	76%	76%	72%	74%	73%	74%	73%	73%	71%



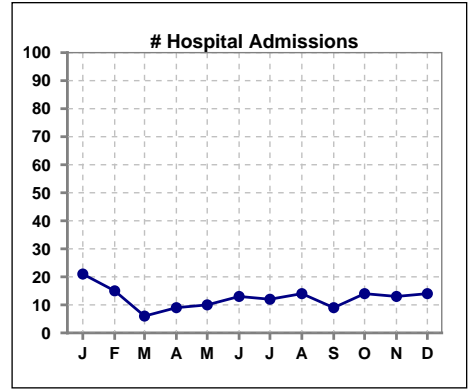
	Jan	Feb	Mar	Apr	May	Jun	Jul	Aug	Sep	Oct	Nov	Dec
# Patient	93	97	90						93	93	92	91
# Influenza	79	78	73						3	45	60	78
% Influenza	85%	80%	81%						3%	48%	65%	86%



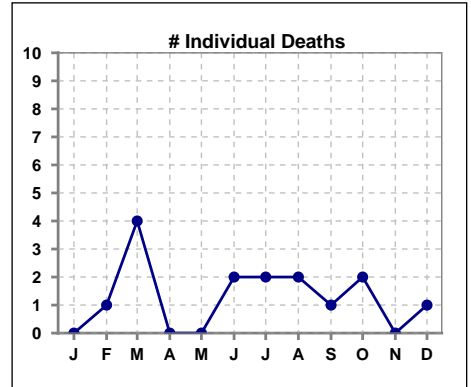
Methodology: a) All labs for 'Adequacy of Dialysis', 'Nutrition', 'Osteodystrophy', 'Anemia' and 'Diabetes' based on last value of month; b) BP's and #L processed are average of all values for month; c) Access data takes last access of month; d) Values for SGA and 'Infection Control' use most recent result.

VIII. Outcome measures

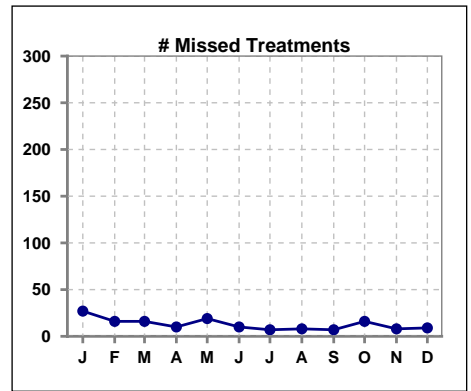
	Jan	Feb	Mar	Apr	May	Jun	Jul	Aug	Sep	Oct	Nov	Dec
# Patient	93	97	90	90	91	93	97	95	93	93	92	91
# Hospital Admissions	21	15	6	9	10	13	12	14	9	14	13	14



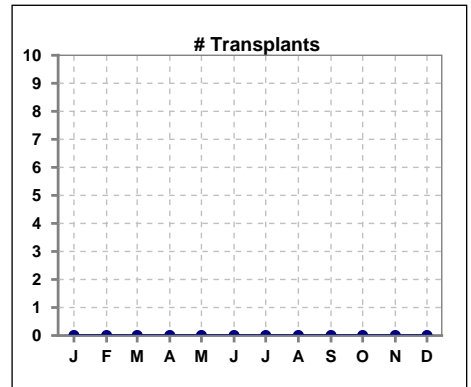
	Jan	Feb	Mar	Apr	May	Jun	Jul	Aug	Sep	Oct	Nov	Dec
# Patient	93	97	90	90	91	93	97	95	93	93	92	91
# Individual Deaths	0	1	4	0	0	2	2	2	1	2	0	1



	Jan	Feb	Mar	Apr	May	Jun	Jul	Aug	Sep	Oct	Nov	Dec
# Patient	93	97	90	90	91	93	97	95	93	93	92	91
# Missed Treatments	27	16	16	10	19	10	7	8	7	16	8	9



	Jan	Feb	Mar	Apr	May	Jun	Jul	Aug	Sep	Oct	Nov	Dec
# Patient	93	97	90	90	91	93	97	95	93	93	92	91
# Transplants	0	0	0	0	0	0	0	0	0	0	0	0



Methodology: a) All labs for 'Adequacy of Dialysis', 'Nutrition', 'Osteodystrophy', 'Anemia' and 'Diabetes' based on last value of month; b) BP's and #L processed are average of all values for month; c) Access data takes last access of month; d) Values for SGA and 'Infection Control' use most recent result.