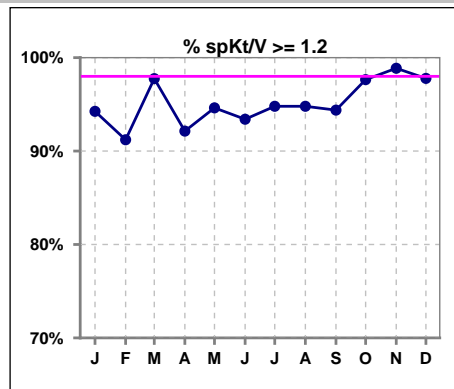
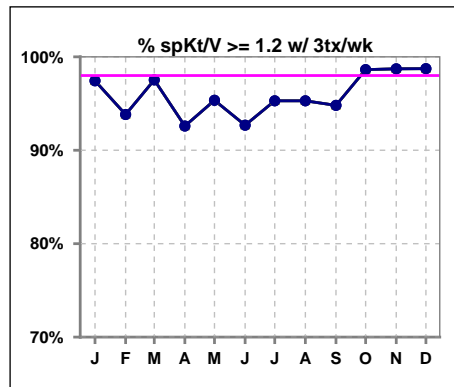


**I. ADEQUACY OF DIALYSIS**

	Jan	Feb	Mar	Apr	May	Jun	Jul	Aug	Sep	Oct	Nov	Dec
# spKt/V	87	91	89	89	93	91	96	96	89	85	88	90
# spKt/V >= 1.2	82	83	87	82	88	85	91	91	84	83	87	88
Pop. Mean	1.58	1.57	1.59	1.57	1.61	1.65	1.66	1.62	1.67	1.67	1.69	1.68
Std. Deviation	0.31	0.32	0.30	0.29	0.28	0.28	0.30	0.28	0.30	0.29	0.28	0.30
% spKt/V >= 1.2	94%	91%	98%	92%	95%	93%	95%	95%	94%	98%	99%	98%

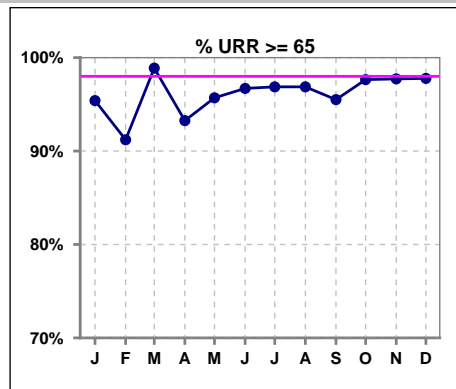


	Jan	Feb	Mar	Apr	May	Jun	Jul	Aug	Sep	Oct	Nov	Dec
# spKt/V w/ 3tx/wk	78	81	81	81	86	82	85	85	77	73	78	79
# spKt/V >= 1.2 w/3tx/wk	76	76	79	75	82	76	81	81	73	72	77	78
Pop. Mean	1.61	1.60	1.61	1.58	1.62	1.66	1.67	1.64	1.68	1.70	1.71	1.71
Std. Deviation	0.30	0.31	0.30	0.29	0.27	0.28	0.29	0.28	0.29	0.29	0.28	0.29
% >= 1.2 w/3tx/wk	97%	94%	98%	93%	95%	93%	95%	95%	95%	99%	99%	99%

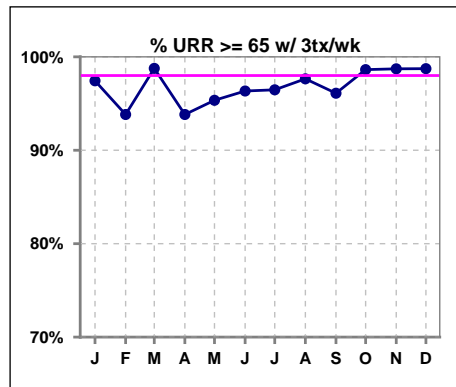


**I. ADEQUACY OF DIALYSIS - CONT.**

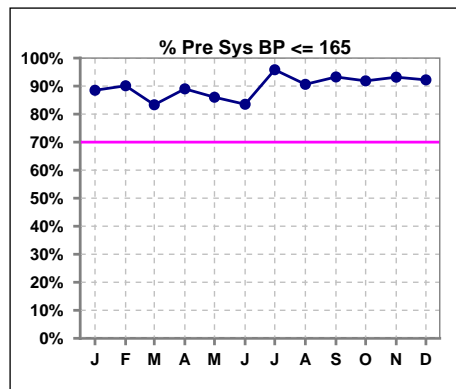
	Jan	Feb	Mar	Apr	May	Jun	Jul	Aug	Sep	Oct	Nov	Dec
# URR	87	91	89	89	93	91	96	96	89	85	88	90
# URR >= 65	83	83	88	83	89	88	93	93	85	83	86	88
Pop. Mean	74	74	74	74	75	76	76	75	76	76	76	76
Std. Deviation	7.29	7.16	5.87	6.26	5.76	5.56	6.29	5.88	6.26	5.74	5.41	5.78
% URR >= 65	95%	91%	99%	93%	96%	97%	97%	97%	96%	98%	98%	98%



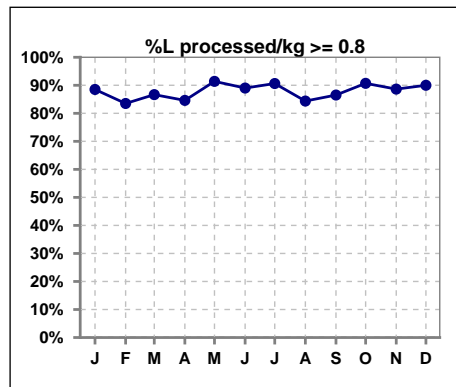
	Jan	Feb	Mar	Apr	May	Jun	Jul	Aug	Sep	Oct	Nov	Dec
# URR w/ 3tx/wk	78	81	81	81	86	82	85	85	77	73	78	79
# URR>=65 w/ 3tx/wk	76	76	80	76	82	79	82	83	74	72	77	78
Pop. Mean	75	74	75	74	75	76	76	75	76	77	77	77
Std. Deviation	7.02	7.01	5.87	6.33	5.69	5.59	6.21	5.85	6.05	5.50	5.31	5.58
% URR>=65 w/ 3tx/wk	97%	94%	99%	94%	95%	96%	96%	98%	96%	99%	99%	99%



	Jan	Feb	Mar	Apr	May	Jun	Jul	Aug	Sep	Oct	Nov	Dec
# Pre Sys BP	87	91	90	91	93	91	96	96	89	86	88	90
# Pre Sys BP <= 165	77	82	77	81	82	80	92	87	83	79	82	83
Pop. Mean	139	140	141	137	138	138	137	140	141	141	141	140
Std. Deviation	19.9	20.2	21.8	21.6	20.7	20.5	18.5	20.2	20.1	18.9	19.4	19.9
% Pre Sys BP <=165	89%	90%	83%	89%	86%	84%	96%	91%	93%	92%	93%	92%



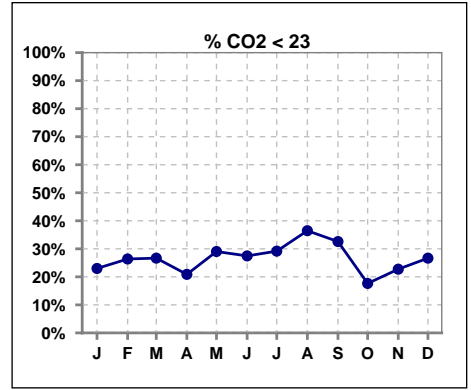
	Jan	Feb	Mar	Apr	May	Jun	Jul	Aug	Sep	Oct	Nov	Dec
# L processed/kg	87	91	90	91	93	91	96	96	89	86	88	90
# L processed/kg>=0.8	77	76	78	77	85	81	87	81	77	78	78	81
Pop. Mean	1	1	1	1	1	1	1	1	1	1	1	1
Std. Deviation	0.3	0.3	0.3	0.3	0.3	0.3	0.3	0.3	0.3	0.3	0.3	0.3
% L processed/kg>=0.8	89%	84%	87%	85%	91%	89%	91%	84%	87%	91%	89%	90%



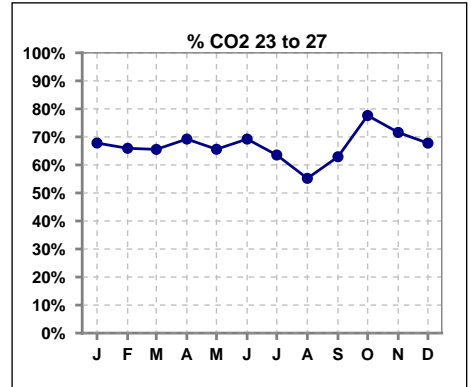
Methodology: a) All labs for 'Adequacy of Dialysis', 'Nutrition', 'Osteodystrophy', 'Anemia' and 'Diabetes' based on last value of month; b) BP's and #L processed are average of all values for month; c) Access data takes last access of month; d) Values for SGA and 'Infection Control' use most recent result.

**I. ADEQUACY OF DIALYSIS - CONT.**

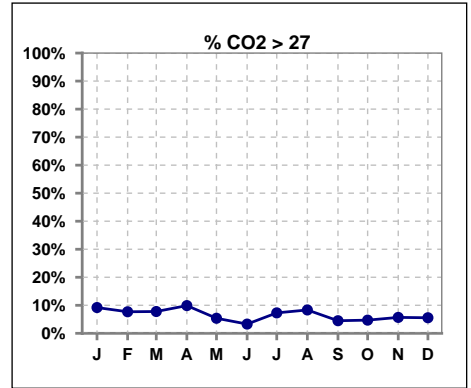
	Jan	Feb	Mar	Apr	May	Jun	Jul	Aug	Sep	Oct	Nov	Dec
# CO2	87	91	90	91	93	91	96	96	89	85	88	90
# CO2 < 23	20	24	24	19	27	25	28	35	29	15	20	24
Pop. Mean	24	24	24	25	24	24	24	24	23	24	24	24
Std. Deviation	2.70	2.82	2.62	2.57	2.48	2.40	2.84	2.42	2.24	2.11	2.24	2.47
% CO2 < 23	23%	26%	27%	21%	29%	27%	29%	36%	33%	18%	23%	27%



	Jan	Feb	Mar	Apr	May	Jun	Jul	Aug	Sep	Oct	Nov	Dec
# CO2	87	91	90	91	93	91	96	96	89	85	88	90
# CO2 23 to 27	59	60	59	63	61	63	61	53	56	66	63	61
Pop. Mean	24	24	24	25	24	24	24	24	23	24	24	24
Std. Deviation	2.70	2.82	2.62	2.57	2.48	2.40	2.84	2.42	2.24	2.11	2.24	2.47
% CO2 23 to 27	68%	66%	66%	69%	66%	69%	64%	55%	63%	78%	72%	68%



	Jan	Feb	Mar	Apr	May	Jun	Jul	Aug	Sep	Oct	Nov	Dec
# CO2	87	91	90	91	93	91	96	96	89	85	88	90
# CO2 > 27	8	7	7	9	5	3	7	8	4	4	5	5
Pop. Mean	24	24	24	25	24	24	24	24	23	24	24	24
Std. Deviation	2.70	2.82	2.62	2.57	2.48	2.40	2.84	2.42	2.24	2.11	2.24	2.47
% CO2 > 27	9%	8%	8%	10%	5%	3%	7%	8%	4%	5%	6%	6%

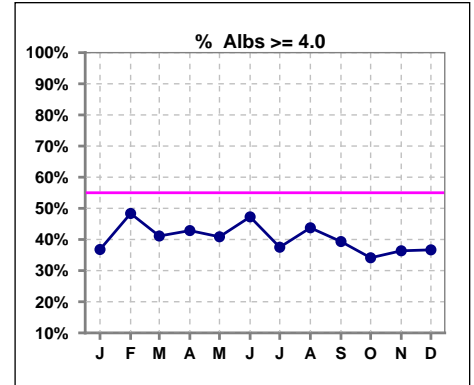


Methodology: a) All labs for 'Adequacy of Dialysis', 'Nutrition', 'Osteodystrophy', 'Anemia' and 'Diabetes' based on last value of month; b) BP's and #L processed are average of all values for month; c) Access data takes last access of month; d) Values for SGA and 'Infection Control' use most recent result.

\*Albumin values use BCG method - as of July 2001

**II. NUTRITION**

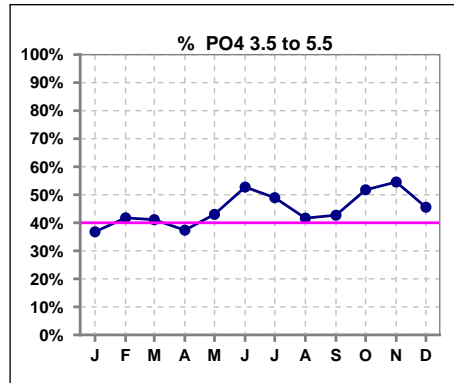
	Jan	Feb	Mar	Apr	May	Jun	Jul	Aug	Sep	Oct	Nov	Dec
# Albumin	87	91	90	91	93	91	96	96	89	85	88	90
# Albumin >= 4.0	32	44	37	39	38	43	36	42	35	29	32	33
Pop. Mean	3.9	3.9	3.8	3.9	3.8	3.9	3.8	3.9	3.8	3.8	3.8	3.8
Std. Deviation	0.32	0.37	0.40	0.33	0.36	0.39	0.33	0.33	0.34	0.35	0.36	0.42
% Alb >= 4.0	37%	48%	41%	43%	41%	47%	38%	44%	39%	34%	36%	37%



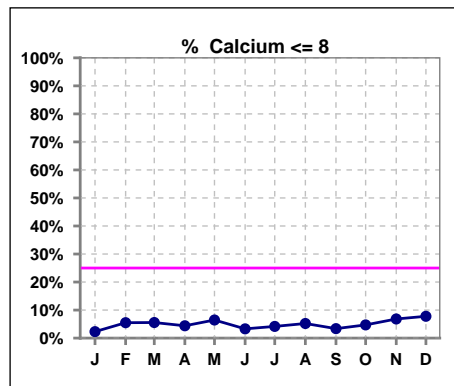
Lab methodology for PTH changed January 2012

**III. OSTEODYSTROPHY**

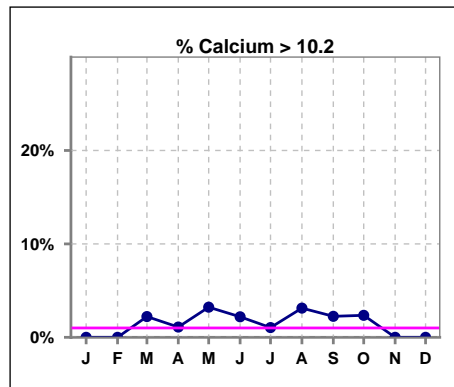
	Jan	Feb	Mar	Apr	May	Jun	Jul	Aug	Sep	Oct	Nov	Dec
# PO4	87	91	90	91	93	91	96	96	89	85	88	90
# PO4 3.5 to 5.5	32	38	37	34	40	48	47	40	38	44	48	41
Pop. Mean	5.7	5.7	5.9	5.8	5.7	5.7	5.6	5.6	5.6	5.4	5.4	5.8
Std. Deviation	1.65	1.74	1.51	1.89	1.72	1.53	1.42	1.39	1.63	1.32	1.39	1.71
% PO4 3.5 to 5.5	37%	42%	41%	37%	43%	53%	49%	42%	43%	52%	55%	46%



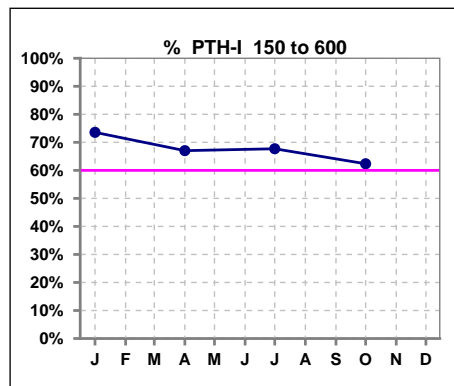
	Jan	Feb	Mar	Apr	May	Jun	Jul	Aug	Sep	Oct	Nov	Dec
# Calcium	87	91	90	91	93	91	96	96	89	85	88	90
# Calcium <= 8	2	5	5	4	6	3	4	5	3	4	6	7
Pop. Mean	9.2	9.1	9.1	9.2	9.2	9.3	9.1	9.2	9.2	9.2	9.1	9.0
Std. Deviation	0.55	0.62	0.66	0.67	0.71	0.58	0.57	0.60	0.62	0.56	0.65	0.68
% Calcium <= 8	2%	5%	6%	4%	6%	3%	4%	5%	3%	5%	7%	8%



	Jan	Feb	Mar	Apr	May	Jun	Jul	Aug	Sep	Oct	Nov	Dec
# Calcium	87	91	90	91	93	91	96	96	89	85	88	90
# Calcium > 10.2	0	0	2	1	3	2	1	3	2	2	0	0
Pop. Mean	9.2	9.1	9.1	9.2	9.2	9.3	9.1	9.2	9.2	9.2	9.1	9.0
Std. Deviation	0.55	0.62	0.66	0.67	0.71	0.58	0.57	0.60	0.62	0.56	0.65	0.68
% Calcium > 10.2	0%	0%	2%	1%	3%	2%	1%	3%	2%	2%	0%	0%



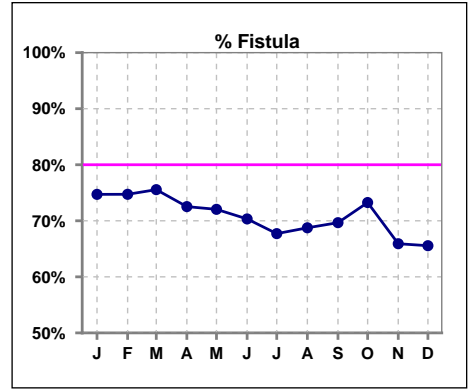
	Jan	Feb	Mar	Apr	May	Jun	Jul	Aug	Sep	Oct	Nov	Dec
# PTH-I	87			91			96			85		
# PTH-I 150 to 600	64			61			65			53		
Pop. Mean	367			347			390			382		
Std. Deviation	260			237			274			363		
% PTH-I 150 to 600	74%			67%			68%			62%		



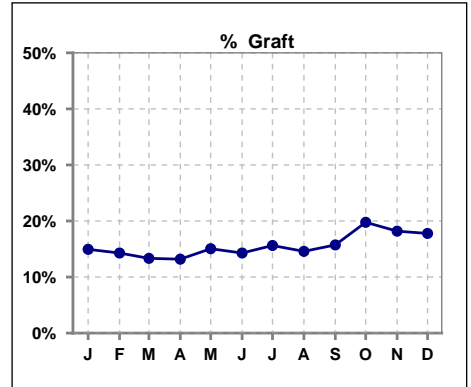
Methodology: a) All labs for 'Adequacy of Dialysis', 'Nutrition', 'Osteodystrophy', 'Anemia' and 'Diabetes' based on last value of month; b) BP's and #L processed are average of all values for month; c) Access data takes last access of month; d) Values for SGA and 'Infection Control' use most recent result.

**IV. ACCESS**

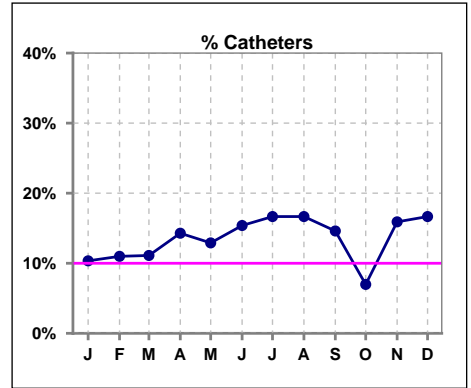
	Jan	Feb	Mar	Apr	May	Jun	Jul	Aug	Sep	Oct	Nov	Dec
# Access	87	91	90	91	93	91	96	96	89	86	88	90
# Fistula	65	68	68	66	67	64	65	66	62	63	58	59
% Fistula	75%	75%	76%	73%	72%	70%	68%	69%	70%	73%	66%	66%



	Jan	Feb	Mar	Apr	May	Jun	Jul	Aug	Sep	Oct	Nov	Dec
# Access	87	91	90	91	93	91	96	96	89	86	88	90
# Graft	13	13	12	12	14	13	15	14	14	17	16	16
% Graft	15%	14%	13%	13%	15%	14%	16%	15%	16%	20%	18%	18%



	Jan	Feb	Mar	Apr	May	Jun	Jul	Aug	Sep	Oct	Nov	Dec
# Access	87	91	90	91	93	91	96	96	89	86	88	90
# Catheters	9	10	10	13	12	14	16	16	13	6	14	15
% Catheters	10%	11%	11%	14%	13%	15%	17%	17%	15%	7%	16%	17%



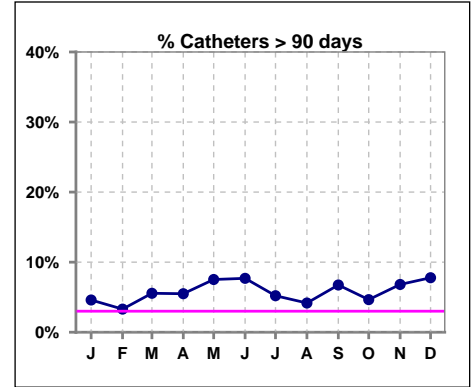
Methodology: a) All labs for 'Adequacy of Dialysis', 'Nutrition', 'Osteodystrophy', 'Anemia' and 'Diabetes' based on last value of month; b) BP's and #L processed are average of all values for month; c) Access data takes last access of month; d) Values for SGA and 'Infection Control' use most recent result.

**IV. ACCESS - CONT.**

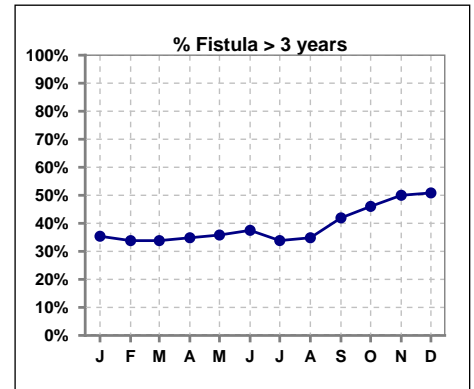
**Catheters > 90 days**

	Jan	Feb	Mar	Apr	May	Jun	Jul	Aug	Sep	Oct	Nov	Dec
# Access	87	91	90	91	93	91	96	96	89	86	88	90
# Catheters	4	3	5	5	7	7	5	4	6	4	6	7
% Catheters	5%	3%	6%	5%	8%	8%	5%	4%	7%	5%	7%	8%

Definition: Catheter in use on last treatment of the month



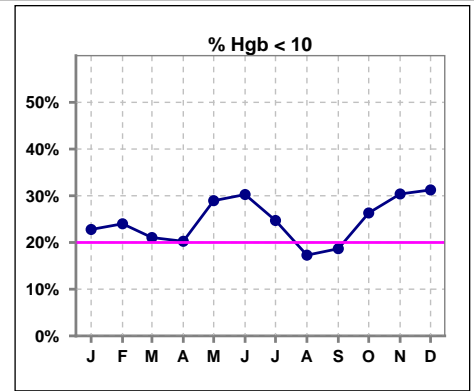
	Jan	Feb	Mar	Apr	May	Jun	Jul	Aug	Sep	Oct	Nov	Dec
# Fistula	65	68	68	66	67	64	65	66	62	63	58	59
# Fistula > 3 yrs	23	23	23	23	24	24	22	23	26	29	29	30
% Fistula > 3 yrs	35%	34%	34%	35%	36%	38%	34%	35%	42%	46%	50%	51%



**V. ANEMIA**

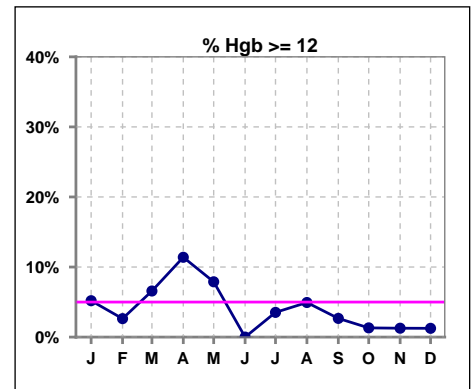
	Jan	Feb	Mar	Apr	May	Jun	Jul	Aug	Sep	Oct	Nov	Dec
# Hgb	79	75	76	79	76	76	85	81	75	76	79	80
# Hgb < 10	18	18	16	16	22	23	21	14	14	20	24	25
Pop. Mean	10.6	10.5	10.6	10.8	10.5	10.4	10.5	10.8	10.7	10.4	10.4	10.4
Std. Deviation	1.3	1.0	1.1	1.4	1.1	1.0	1.1	1.0	1.0	1.0	1.0	1.0
% Hgb < 10	23%	24%	21%	20%	29%	30%	25%	17%	19%	26%	30%	31%

Note: Excludes patients who received no ESA in month.



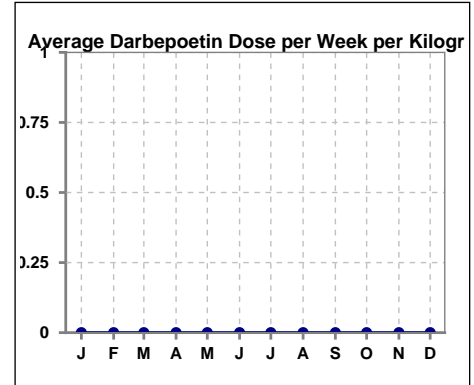
	Jan	Feb	Mar	Apr	May	Jun	Jul	Aug	Sep	Oct	Nov	Dec
# Hgb	77	76	76	79	76	76	85	81	75	76	79	80
# Hgb >= 12	4	2	5	9	6	0	3	4	2	1	1	1
Pop. Mean	10.6	10.5	10.6	10.8	10.5	10.4	10.5	10.8	10.7	10.4	10.4	10.4
Std. Deviation	1.3	1.0	1.1	1.4	1.1	1.0	1.1	1.0	1.0	1.0	1.0	1.0
% Hgb >= 12	5%	3%	7%	11%	8%	0%	4%	5%	3%	1%	1%	1%

Note: Excludes patients who received no ESA in month.



**Average Darbepoetin Dose per Week per Kilogram**

	Jan	Feb	Mar	Apr	May	Jun	Jul	Aug	Sep	Oct	Nov	Dec
# Average Darbepoetin	0	0	0	0	0	0	0	0	0	0	0	0

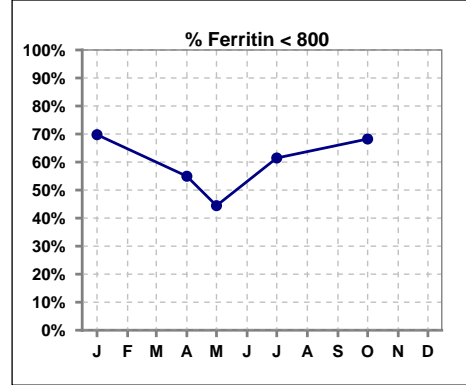




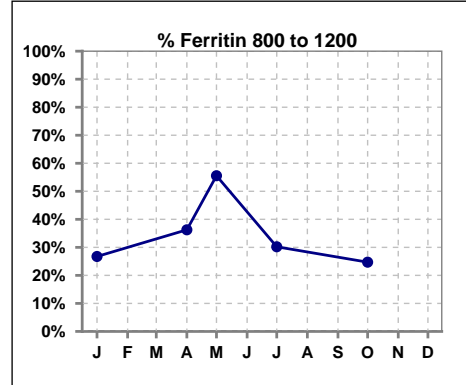
**V. ANEMIA - CONT.**

**Iron Profile**

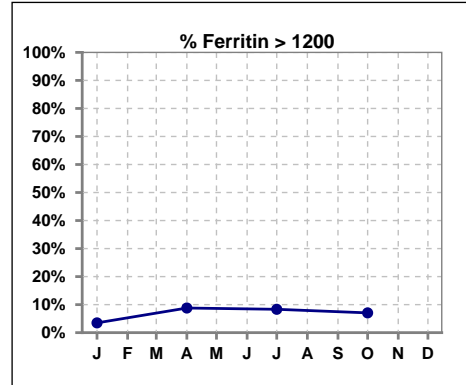
	Jan	Feb	Mar	Apr	May	Jun	Jul	Aug	Sep	Oct	Nov	Dec
# Ferritin	86			91	9		96			85		
# Ferritin < 800	60			50	4		59			58		
Pop. Mean	662			723	703		671			676		
Std. Deviation	327			354	344		337			323		
<b>% Ferritin &lt; 800</b>	<b>70%</b>			<b>55%</b>	<b>44%</b>		<b>61%</b>			<b>68%</b>		



	Jan	Feb	Mar	Apr	May	Jun	Jul	Aug	Sep	Oct	Nov	Dec
# Ferritin	86			91	9		96			85		
# Ferritin 800 to 1200	23			33	5		29			21		
Pop. Mean	662			723	703		671			676		
Std. Deviation	327			354	344		337			323		
<b>% Ferritin 800 to 1200</b>	<b>27%</b>			<b>36%</b>	<b>56%</b>		<b>30%</b>			<b>25%</b>		

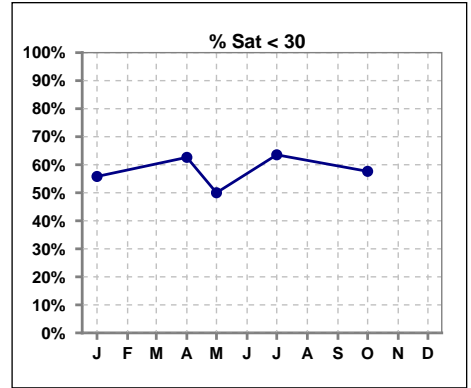


	Jan	Feb	Mar	Apr	May	Jun	Jul	Aug	Sep	Oct	Nov	Dec
# Ferritin	86			91	9		96			85		
# Ferritin > 1200	3			8			8			6		
Pop. Mean	662			723	703		671			676		
Std. Deviation	327			354	344		337			323		
<b>% Ferritin &gt; 1200</b>	<b>3%</b>			<b>9%</b>			<b>8%</b>			<b>7%</b>		

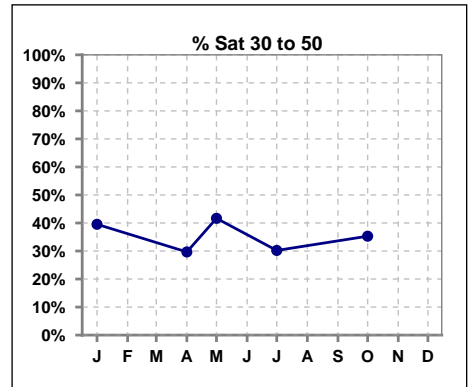


**V. ANEMIA - CONT.**

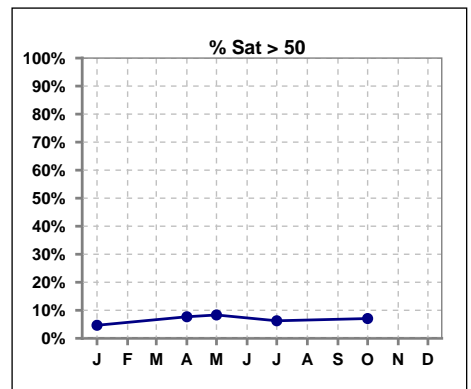
	Jan	Feb	Mar	Apr	May	Jun	Jul	Aug	Sep	Oct	Nov	Dec
# % Sat	86			91	12		96			85		
# % Sat < 30	48			57	6		61			49		
Pop. Mean	27			30	31		28			29		
Std. Deviation	13			17	15		13			13		
<b>% % Sat &lt; 30</b>	<b>56%</b>			<b>63%</b>	<b>50%</b>		<b>64%</b>			<b>58%</b>		



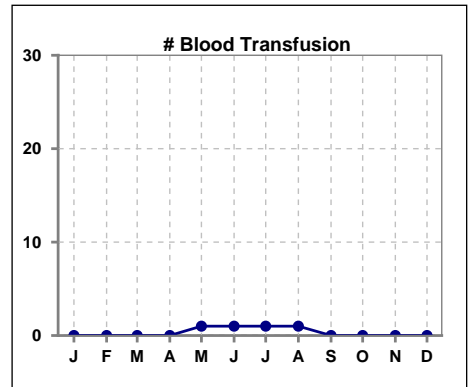
	Jan	Feb	Mar	Apr	May	Jun	Jul	Aug	Sep	Oct	Nov	Dec
# % Sat	86			91	12		96			85		
# % Sat 30 to 50	34			27	5		29			30		
Pop. Mean	27			30	31		28			29		
Std. Deviation	13			17	15		13			13		
<b>% % Sat 30 to 50</b>	<b>40%</b>			<b>30%</b>	<b>42%</b>		<b>30%</b>			<b>35%</b>		



	Jan	Feb	Mar	Apr	May	Jun	Jul	Aug	Sep	Oct	Nov	Dec
# % Sat	86			91	12		96			85		
# % Sat > 50	4			7	1		6			6		
Pop. Mean	27			30	31		28			29		
Std. Deviation	13			17	15		13			13		
<b>% % Sat &gt; 50</b>	<b>5%</b>			<b>8%</b>	<b>8%</b>		<b>6%</b>			<b>7%</b>		



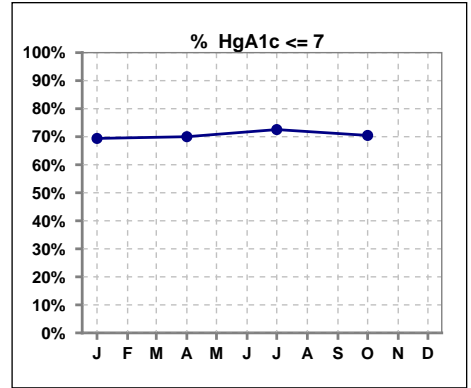
	Jan	Feb	Mar	Apr	May	Jun	Jul	Aug	Sep	Oct	Nov	Dec
# Patient	87	93	90	91	94	92	96	96	89	86	88	90
# Blood Transfusion	0	0	0	0	1	1	1	1	0	0	0	0



Methodology: a) All labs for 'Adequacy of Dialysis', 'Nutrition', 'Osteodystrophy', 'Anemia' and 'Diabetes' based on last value of month; b) BP's and #L processed are average of all values for month; c) Access data takes last access of month; d) Values for SGA and 'Infection Control' use most recent result.

**VI. Diabetes**

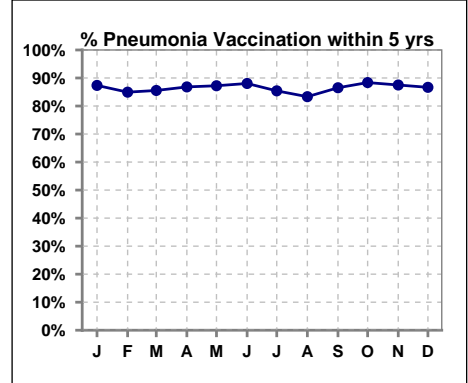
	Jan	Feb	Mar	Apr	May	Jun	Jul	Aug	Sep	Oct	Nov	Dec
# HgA1c	49			50			51			44		
# HgA1c <= 7	34			35			37			31		
Pop. Mean	6.8			6.4			6.5			6.6		
Std. Deviation	1.70			1.14			1.42			1.36		
<b>% HgA1c &lt;= 7</b>	<b>69%</b>			<b>70%</b>			<b>73%</b>			<b>70%</b>		



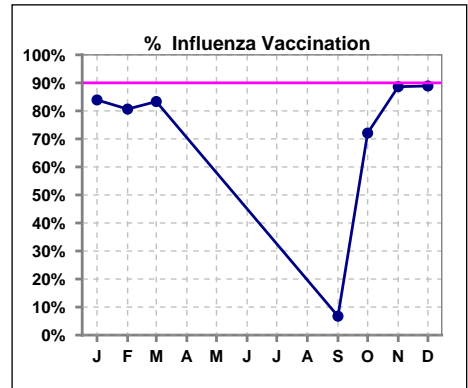
**VII. Infection Control**

**Pneumonia vaccination within the past five years**

	Jan	Feb	Mar	Apr	May	Jun	Jul	Aug	Sep	Oct	Nov	Dec
# Patient	87	93	90	91	94	92	96	96	89	86	88	90
# Pneumonia	76	79	77	79	82	81	82	80	77	76	77	78
% Pneumonia	87%	85%	86%	87%	87%	88%	85%	83%	87%	88%	88%	87%



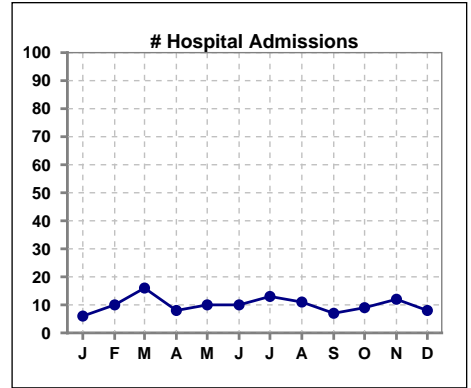
	Jan	Feb	Mar	Apr	May	Jun	Jul	Aug	Sep	Oct	Nov	Dec
# Patient	87	93	90						89	86	88	90
# Influenza	73	75	75						6	62	78	80
% Influenza	84%	81%	83%						7%	72%	89%	89%



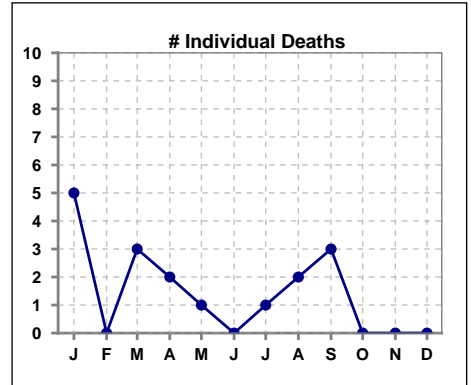
Methodology: a) All labs for 'Adequacy of Dialysis', 'Nutrition', 'Osteodystrophy', 'Anemia' and 'Diabetes' based on last value of month; b) BP's and #L processed are average of all values for month; c) Access data takes last access of month; d) Values for SGA and 'Infection Control' use most recent result.

**VIII. Outcome measures**

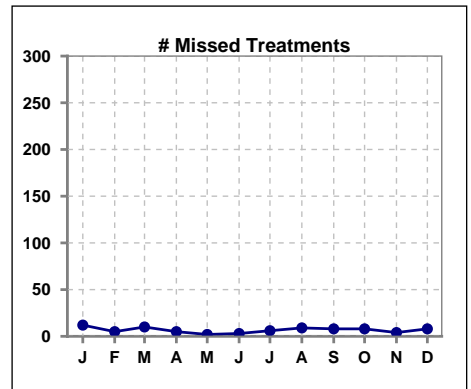
	Jan	Feb	Mar	Apr	May	Jun	Jul	Aug	Sep	Oct	Nov	Dec
# Patient	87	93	90	91	94	92	96	96	89	86	88	90
# Hospital Admissions	6	10	16	8	10	10	13	11	7	9	12	8



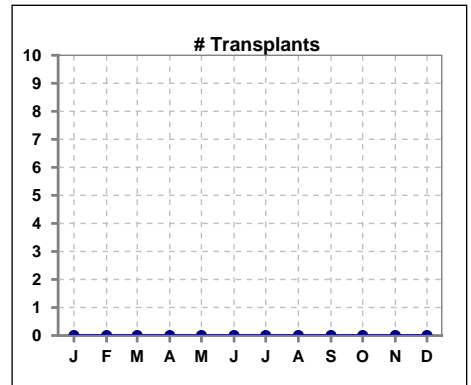
	Jan	Feb	Mar	Apr	May	Jun	Jul	Aug	Sep	Oct	Nov	Dec
# Patient	87	93	90	91	94	92	96	96	89	86	88	90
# Individual Deaths	5	0	3	2	1	0	1	2	3	0	0	0



	Jan	Feb	Mar	Apr	May	Jun	Jul	Aug	Sep	Oct	Nov	Dec
# Patient	87	93	90	91	94	92	96	96	89	86	88	90
# Missed Treatments	12	5	10	5	2	3	6	9	8	8	4	8



	Jan	Feb	Mar	Apr	May	Jun	Jul	Aug	Sep	Oct	Nov	Dec
# Patient	87	93	90	91	94	92	96	96	89	86	88	90
# Transplants	0	0	0	0	0	0	0	0	0	0	0	0



Methodology: a) All labs for 'Adequacy of Dialysis', 'Nutrition', 'Osteodystrophy', 'Anemia' and 'Diabetes' based on last value of month; b) BP's and #L processed are average of all values for month; c) Access data takes last access of month; d) Values for SGA and 'Infection Control' use most recent result.