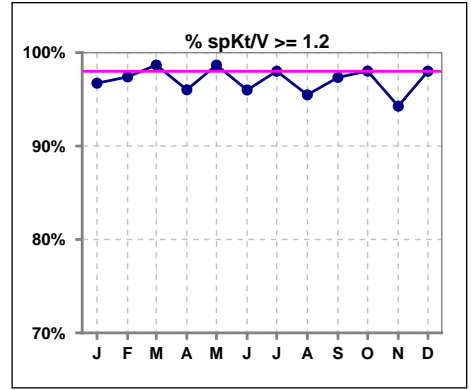
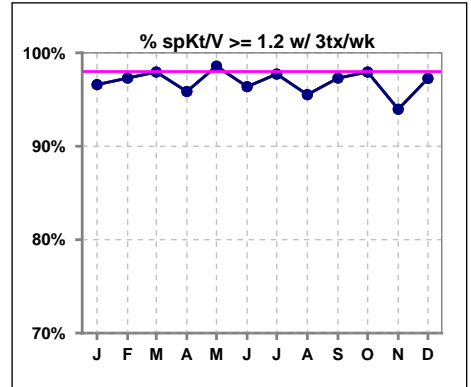


I. ADEQUACY OF DIALYSIS

	Jan	Feb	Mar	Apr	May	Jun	Jul	Aug	Sep	Oct	Nov	Dec
# spKt/V	153	154	151	151	150	150	151	155	151	152	157	151
# spKt/V >= 1.2	148	150	149	145	148	144	148	148	147	149	148	148
Pop. Mean	1.69	1.71	1.72	1.71	1.69	1.69	1.73	1.68	1.70	1.67	1.65	1.68
Std. Deviation	0.35	0.37	0.38	0.42	0.34	0.36	0.36	0.34	0.35	0.32	0.36	0.33
% spKt/V >= 1.2	97%	97%	99%	96%	99%	96%	98%	95%	97%	98%	94%	98%

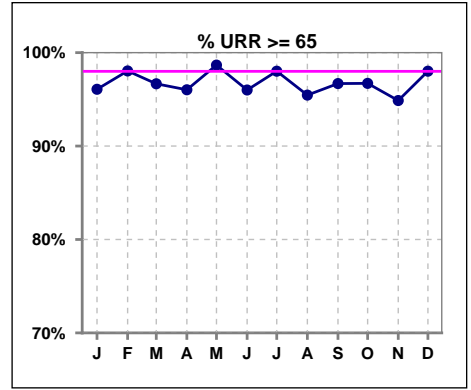


	Jan	Feb	Mar	Apr	May	Jun	Jul	Aug	Sep	Oct	Nov	Dec
# spKt/V w/ 3tx/wk	147	148	146	145	140	138	132	134	148	146	149	146
# spKt/V >= 1.2 w/3tx/wk	142	144	143	139	138	133	129	128	144	143	140	142
Pop. Mean	1.68	1.70	1.71	1.70	1.69	1.69	1.72	1.67	1.70	1.67	1.66	1.68
Std. Deviation	0.34	0.36	0.38	0.42	0.34	0.35	0.36	0.33	0.35	0.32	0.36	0.33
% >= 1.2 w/3tx/wk	97%	97%	98%	96%	99%	96%	98%	96%	97%	98%	94%	97%

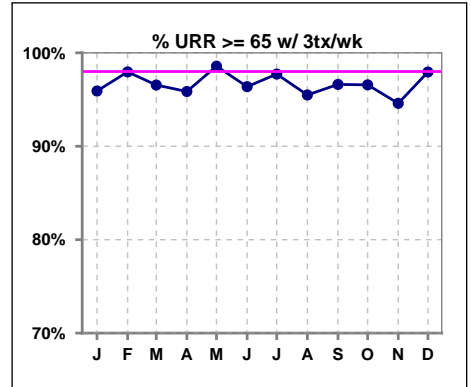


I. ADEQUACY OF DIALYSIS - CONT.

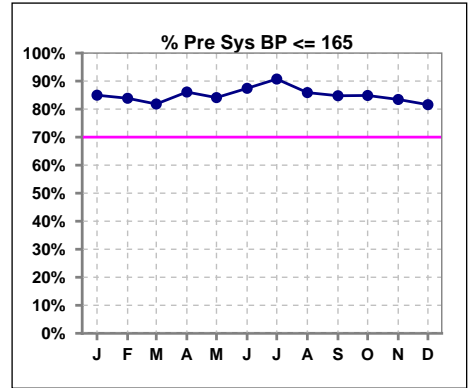
	Jan	Feb	Mar	Apr	May	Jun	Jul	Aug	Sep	Oct	Nov	Dec
# URR	153	153	150	151	150	150	151	154	151	152	156	151
# URR >= 65	147	150	145	145	148	144	148	147	146	147	148	148
Pop. Mean	76	76	76	76	76	76	76	76	76	76	75	76
Std. Deviation	6.71	6.63	6.48	8.32	6.66	6.95	5.98	6.71	6.67	6.22	7.21	6.46
% URR >= 65	96%	98%	97%	96%	99%	96%	98%	95%	97%	97%	95%	98%



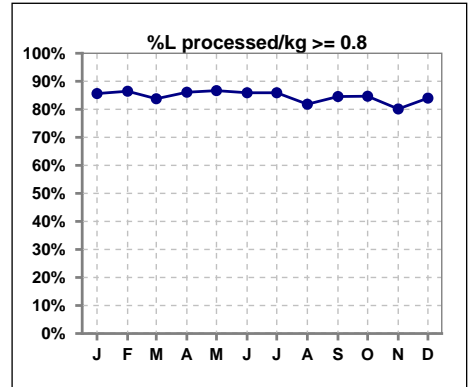
	Jan	Feb	Mar	Apr	May	Jun	Jul	Aug	Sep	Oct	Nov	Dec
# URR w/ 3tx/wk	147	147	145	145	140	138	132	133	148	146	148	146
# URR>=65 w/ 3tx/wk	141	144	140	139	138	133	129	127	143	141	140	143
Pop. Mean	75	76	76	75	76	76	76	76	76	76	75	76
Std. Deviation	6.67	6.47	6.46	8.32	6.67	6.86	5.91	6.65	6.70	6.25	7.28	6.47
% URR>=65 w/ 3tx/wk	96%	98%	97%	96%	99%	96%	98%	95%	97%	97%	95%	98%



	Jan	Feb	Mar	Apr	May	Jun	Jul	Aug	Sep	Oct	Nov	Dec
# Pre Sys BP	153	155	154	151	151	151	151	156	151	152	157	152
# Pre Sys BP <= 165	133	133	127	131	128	134	139	135	129	133	134	126
Pop. Mean	145	145	146	144	142	143	142	143	145	145	147	146
Std. Deviation	20.4	20.3	21.9	20.2	21.6	21.1	20.2	19.8	19.6	19.7	20.2	21.6
% Pre Sys BP <=165	85%	84%	82%	86%	84%	87%	91%	86%	85%	85%	83%	82%



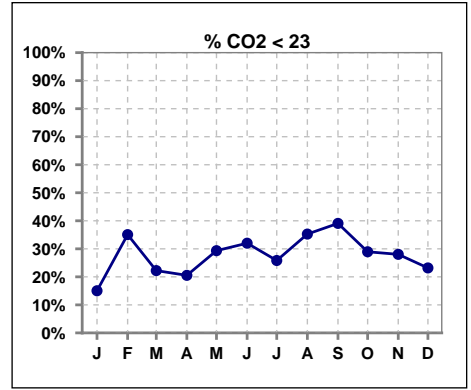
	Jan	Feb	Mar	Apr	May	Jun	Jul	Aug	Sep	Oct	Nov	Dec
# L processed/kg	153	155	154	151	150	149	149	154	149	150	156	150
# L processed/kg>=0.8	131	134	129	130	130	128	128	126	126	127	125	126
Pop. Mean	1	1	1	1	1	1	1	1	1	1	1	1
Std. Deviation	0.3	0.3	0.3	0.3	0.3	0.3	0.3	0.3	0.3	0.3	0.3	0.3
% L processed/kg>=0.8	86%	86%	84%	86%	87%	86%	86%	82%	85%	85%	80%	84%



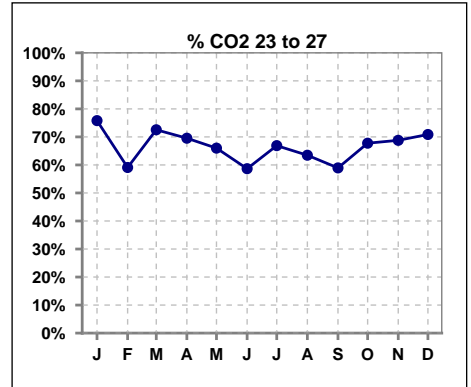
Methodology: a) All labs for 'Adequacy of Dialysis', 'Nutrition', 'Osteodystrophy', 'Anemia' and 'Diabetes' based on last value of month; b) BP's and #L processed are average of all values for month; c) Access data takes last access of month; d) Values for SGA and 'Infection Control' use most recent result.

I. ADEQUACY OF DIALYSIS - CONT.

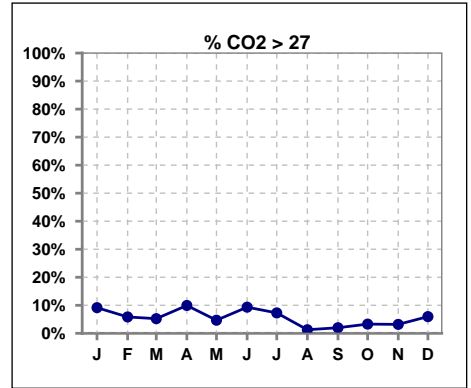
	Jan	Feb	Mar	Apr	May	Jun	Jul	Aug	Sep	Oct	Nov	Dec
# CO2	153	154	153	151	150	150	151	156	151	152	157	151
# CO2 < 23	23	54	34	31	44	48	39	55	59	44	44	35
Pop. Mean	25	23	24	24	23	24	24	23	23	23	23	24
Std. Deviation	2.54	2.85	2.70	2.77	2.45	2.56	2.75	2.60	2.79	2.58	2.86	2.59
% CO2 < 23	15%	35%	22%	21%	29%	32%	26%	35%	39%	29%	28%	23%



	Jan	Feb	Mar	Apr	May	Jun	Jul	Aug	Sep	Oct	Nov	Dec
# CO2	153	154	153	151	150	150	151	156	151	152	157	151
# CO2 23 to 27	116	91	111	105	99	88	101	99	89	103	108	107
Pop. Mean	25	23	24	24	23	24	24	23	23	23	23	24
Std. Deviation	2.54	2.85	2.70	2.77	2.45	2.56	2.75	2.60	2.79	2.58	2.86	2.59
% CO2 23 to 27	76%	59%	73%	70%	66%	59%	67%	63%	59%	68%	69%	71%



	Jan	Feb	Mar	Apr	May	Jun	Jul	Aug	Sep	Oct	Nov	Dec
# CO2	153	154	153	151	150	150	151	156	151	152	157	151
# CO2 > 27	14	9	8	15	7	14	11	2	3	5	5	9
Pop. Mean	25	23	24	24	23	24	24	23	23	23	23	24
Std. Deviation	2.54	2.85	2.70	2.77	2.45	2.56	2.75	2.60	2.79	2.58	2.86	2.59
% CO2 > 27	9%	6%	5%	10%	5%	9%	7%	1%	2%	3%	3%	6%

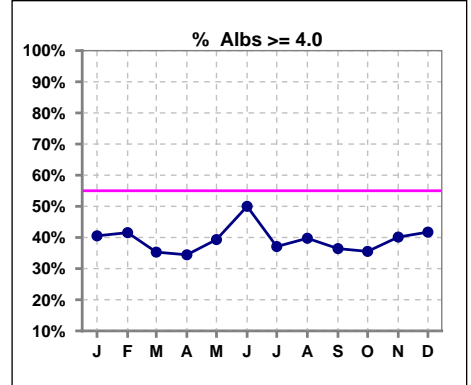


Methodology: a) All labs for 'Adequacy of Dialysis', 'Nutrition', 'Osteodystrophy', 'Anemia' and 'Diabetes' based on last value of month; b) BP's and #L processed are average of all values for month; c) Access data takes last access of month; d) Values for SGA and 'Infection Control' use most recent result.

*Albumin values use BCG method - as of July 2001

II. NUTRITION

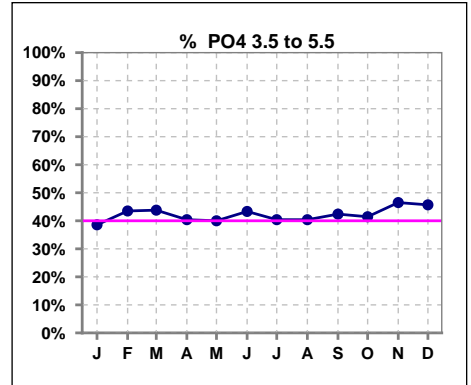
	Jan	Feb	Mar	Apr	May	Jun	Jul	Aug	Sep	Oct	Nov	Dec
# Albumin	153	154	153	151	150	150	151	156	151	152	157	151
# Albumin >= 4.0	62	64	54	52	59	75	56	62	55	54	63	63
Pop. Mean	3.8	3.9	3.8	3.8	3.8	3.9	3.8	3.8	3.8	3.8	3.8	3.8
Std. Deviation	0.38	0.37	0.41	0.38	0.35	0.35	0.34	0.37	0.38	0.34	0.34	0.36
% Alb >= 4.0	41%	42%	35%	34%	39%	50%	37%	40%	36%	36%	40%	42%



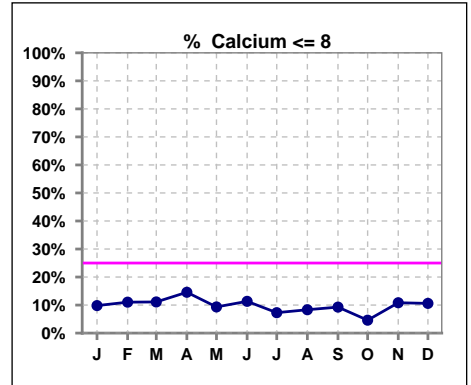
Lab methodology for PTH changed January 2012

III. OSTEODYSTROPHY

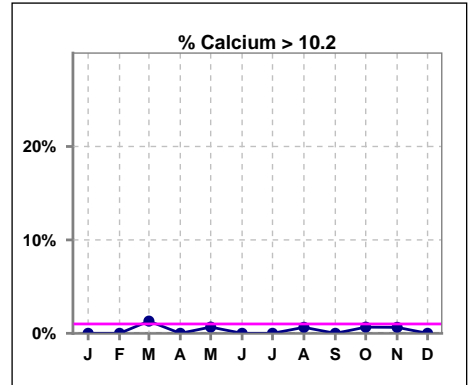
	Jan	Feb	Mar	Apr	May	Jun	Jul	Aug	Sep	Oct	Nov	Dec
# PO4	153	154	153	151	150	150	151	156	151	152	157	151
# PO4 3.5 to 5.5	59	67	67	61	60	65	61	63	64	63	73	69
Pop. Mean	5.8	5.8	5.9	5.8	5.9	6.0	6.2	6.0	6.1	5.8	5.8	5.9
Std. Deviation	1.74	1.94	1.88	1.95	1.96	2.06	2.04	1.97	1.86	1.76	1.81	1.94
% PO4 3.5 to 5.5	39%	44%	44%	40%	40%	43%	40%	40%	42%	41%	46%	46%



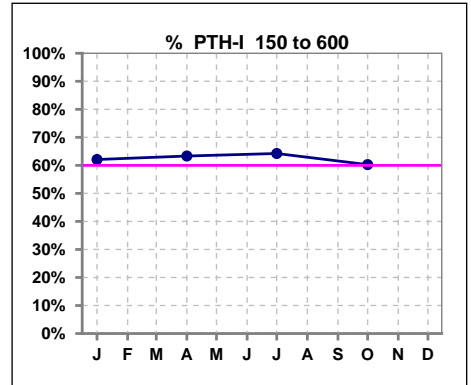
	Jan	Feb	Mar	Apr	May	Jun	Jul	Aug	Sep	Oct	Nov	Dec
# Calcium	153	154	153	151	150	150	151	156	151	152	157	151
# Calcium <= 8	15	17	17	22	14	17	11	13	14	7	17	16
Pop. Mean	9.1	9.0	9.0	9.0	9.1	9.1	9.1	9.0	9.1	9.2	9.0	9.1
Std. Deviation	0.76	0.76	0.75	0.77	0.73	0.76	0.75	0.79	0.77	0.74	0.73	0.80
% Calcium <= 8	10%	11%	11%	15%	9%	11%	7%	8%	9%	5%	11%	11%



	Jan	Feb	Mar	Apr	May	Jun	Jul	Aug	Sep	Oct	Nov	Dec
# Calcium	153	154	153	151	150	150	151	156	151	152	157	151
# Calcium > 10.2	0	0	2	0	1	0	0	1	0	1	1	0
Pop. Mean	9.1	9.0	9.0	9.0	9.1	9.1	9.1	9.0	9.1	9.2	9.0	9.1
Std. Deviation	0.76	0.76	0.75	0.77	0.73	0.76	0.75	0.79	0.77	0.74	0.73	0.80
% Calcium > 10.2	0%	0%	1%	0%	1%	0%	0%	1%	0%	1%	1%	0%



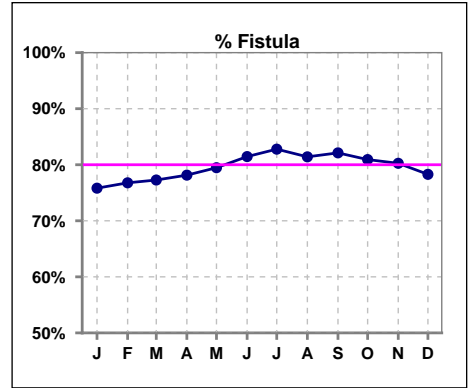
	Jan	Feb	Mar	Apr	May	Jun	Jul	Aug	Sep	Oct	Nov	Dec
# PTH-I	153			150			151			151		
# PTH-I 150 to 600	95			95			97			91		
Pop. Mean	470			417			403			415		
Std. Deviation	451			360			366			443		
% PTH-I 150 to 600	62%			63%			64%			60%		



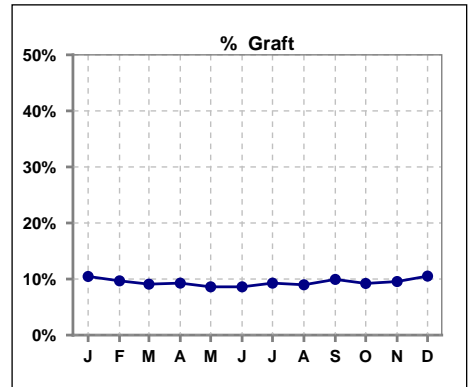
Methodology: a) All labs for 'Adequacy of Dialysis', 'Nutrition', 'Osteodystrophy', 'Anemia' and 'Diabetes' based on last value of month; b) BP's and #L processed are average of all values for month; c) Access data takes last access of month; d) Values for SGA and 'Infection Control' use most recent result.

IV. ACCESS

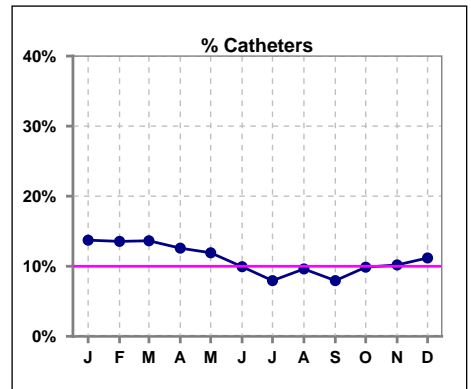
	Jan	Feb	Mar	Apr	May	Jun	Jul	Aug	Sep	Oct	Nov	Dec
# Access	153	155	154	151	151	151	151	156	151	152	157	152
# Fistula	116	119	119	118	120	123	125	127	124	123	126	119
% Fistula	76%	77%	77%	78%	79%	81%	83%	81%	82%	81%	80%	78%



	Jan	Feb	Mar	Apr	May	Jun	Jul	Aug	Sep	Oct	Nov	Dec
# Access	153	155	154	151	151	151	151	156	151	152	157	152
# Graft	16	15	14	14	13	13	14	14	15	14	15	16
% Graft	10%	10%	9%	9%	9%	9%	9%	9%	10%	9%	10%	11%



	Jan	Feb	Mar	Apr	May	Jun	Jul	Aug	Sep	Oct	Nov	Dec
# Access	153	155	154	151	151	151	151	156	151	152	157	152
# Catheters	21	21	21	19	18	15	12	15	12	15	16	17
% Catheters	14%	14%	14%	13%	12%	10%	8%	10%	8%	10%	10%	11%



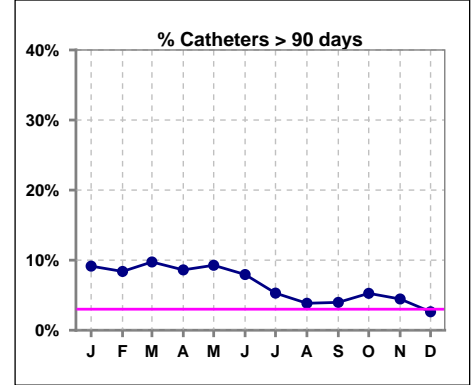
Methodology: a) All labs for 'Adequacy of Dialysis', 'Nutrition', 'Osteodystrophy', 'Anemia' and 'Diabetes' based on last value of month; b) BP's and #L processed are average of all values for month; c) Access data takes last access of month; d) Values for SGA and 'Infection Control' use most recent result.

IV. ACCESS - CONT.

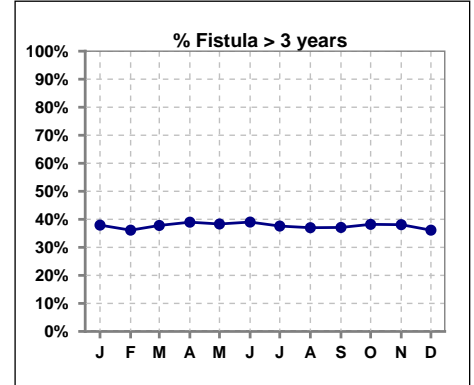
Catheters > 90 days

	Jan	Feb	Mar	Apr	May	Jun	Jul	Aug	Sep	Oct	Nov	Dec
# Access	153	155	154	151	151	151	151	156	151	152	157	152
# Catheters	14	13	15	13	14	12	8	6	6	8	7	4
% Catheters	9%	8%	10%	9%	9%	8%	5%	4%	4%	5%	4%	3%

Definition: Catheter in use on last treatment of the month



	Jan	Feb	Mar	Apr	May	Jun	Jul	Aug	Sep	Oct	Nov	Dec
# Fistula	116	119	119	118	120	123	125	127	124	123	126	119
# Fistula > 3 yrs	44	43	45	46	46	48	47	47	46	47	48	43
% Fistula > 3 yrs	38%	36%	38%	39%	38%	39%	38%	37%	37%	38%	38%	36%

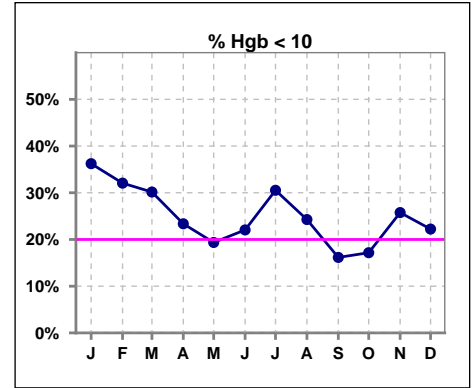


Methodology: a) All labs for 'Adequacy of Dialysis', 'Nutrition', 'Osteodystrophy', 'Anemia' and 'Diabetes' based on last value of month; b) BP's and #L processed are average of all values for month; c) Access data takes last access of month; d) Values for SGA and 'Infection Control' use most recent result.

V. ANEMIA

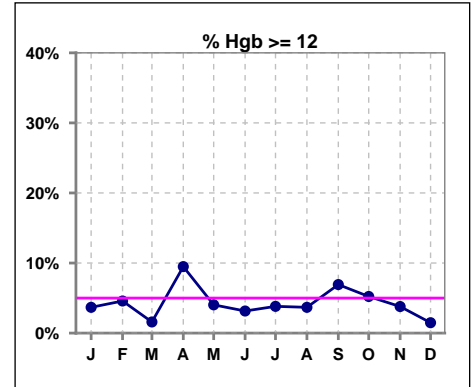
	Jan	Feb	Mar	Apr	May	Jun	Jul	Aug	Sep	Oct	Nov	Dec
# Hgb	138	131	126	137	124	127	131	136	130	134	132	135
# Hgb < 10	50	42	38	32	24	28	40	33	21	23	34	30
Pop. Mean	10.2	10.4	10.4	10.7	10.7	10.7	10.4	10.7	10.8	10.7	10.5	10.6
Std. Deviation	1.1	1.2	1.1	1.2	1.1	1.1	1.2	1.2	1.2	1.1	1.1	1.1
% Hgb < 10	36%	32%	30%	23%	19%	22%	31%	24%	16%	17%	26%	22%

Note: Excludes patients who received no ESA in month.



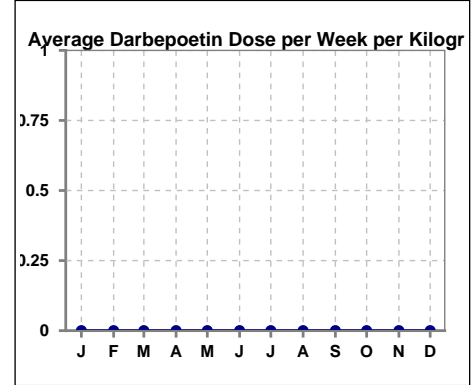
	Jan	Feb	Mar	Apr	May	Jun	Jul	Aug	Sep	Oct	Nov	Dec
# Hgb	136	131	126	137	124	127	131	136	130	134	132	135
# Hgb >= 12	5	6	2	13	5	4	5	5	9	7	5	2
Pop. Mean	10.3	10.4	10.4	10.7	10.7	10.7	10.4	10.7	10.8	10.7	10.5	10.6
Std. Deviation	1.1	1.2	1.1	1.2	1.1	1.1	1.2	1.2	1.2	1.1	1.1	1.1
% Hgb >= 12	4%	5%	2%	9%	4%	3%	4%	4%	7%	5%	4%	1%

Note: Excludes patients who received no ESA in month.



Average Darbepoetin Dose per Week per Kilogram

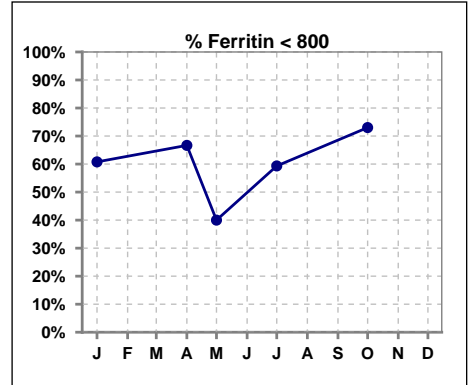
	Jan	Feb	Mar	Apr	May	Jun	Jul	Aug	Sep	Oct	Nov	Dec
# Average Darbepoetin	0	0	0	0	0	0	0	0	0	0	0	0



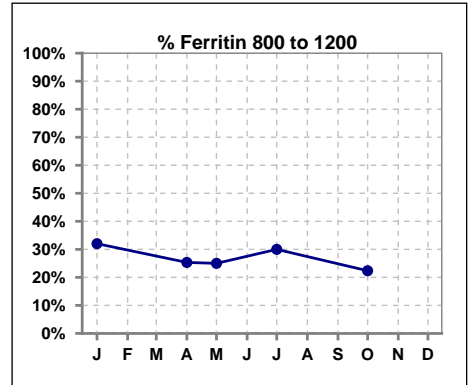
V. ANEMIA - CONT.

Iron Profile

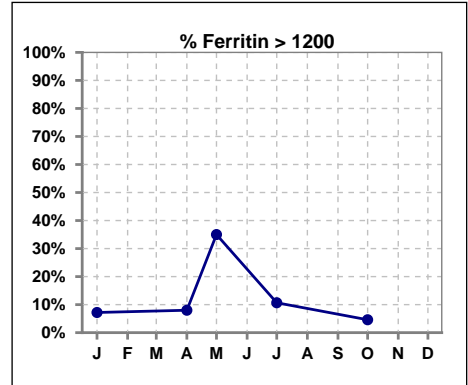
	Jan	Feb	Mar	Apr	May	Jun	Jul	Aug	Sep	Oct	Nov	Dec
# Ferritin	153			150	20		150			152		
# Ferritin < 800	93			100	8		89			111		
Pop. Mean	706			695	927		727			629		
Std. Deviation	359			440	404		401			393		
% Ferritin < 800	61%			67%	40%		59%			73%		



	Jan	Feb	Mar	Apr	May	Jun	Jul	Aug	Sep	Oct	Nov	Dec
# Ferritin	153			150	20		150			152		
# Ferritin 800 to 1200	49			38	5		45			34		
Pop. Mean	706			695	927		727			629		
Std. Deviation	359			440	404		401			393		
% Ferritin 800 to 1200	32%			25%	25%		30%			22%		



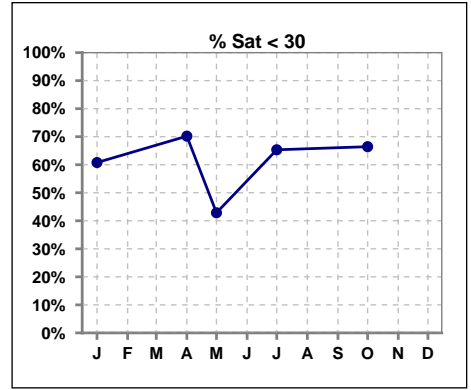
	Jan	Feb	Mar	Apr	May	Jun	Jul	Aug	Sep	Oct	Nov	Dec
# Ferritin	153			150	20		150			152		
# Ferritin > 1200	11			12	7		16			7		
Pop. Mean	706			695	927		727			629		
Std. Deviation	359			440	404		401			393		
% Ferritin > 1200	7%			8%	35%		11%			5%		



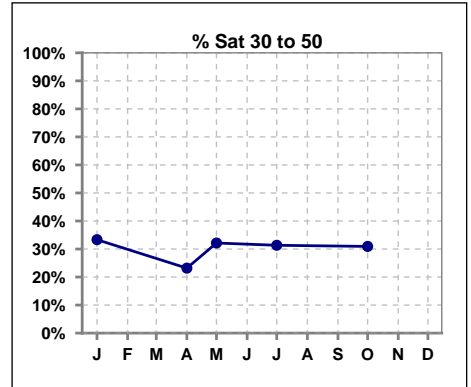
Methodology: a) All labs for 'Adequacy of Dialysis', 'Nutrition', 'Osteodystrophy', 'Anemia' and 'Diabetes' based on last value of month; b) BP's and #L processed are average of all values for month; c) Access data takes last access of month; d) Values for SGA and 'Infection Control' use most recent result.

V. ANEMIA - CONT.

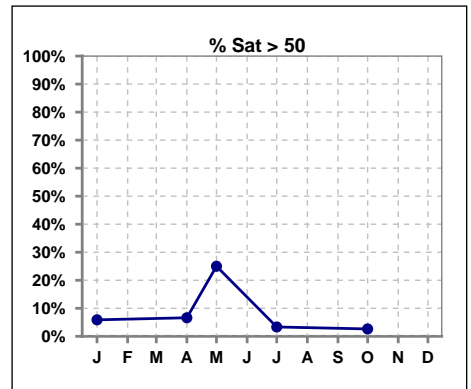
	Jan	Feb	Mar	Apr	May	Jun	Jul	Aug	Sep	Oct	Nov	Dec
# % Sat	153			151	28		150			152		
# % Sat < 30	93			106	12		98			101		
Pop. Mean	28			27	41		26			27		
Std. Deviation	13			14	22		10			11		
% % Sat < 30	61%			70%	43%		65%			66%		



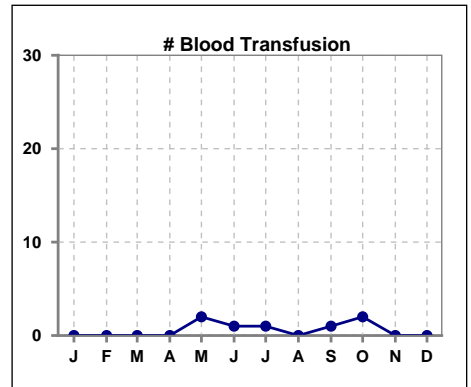
	Jan	Feb	Mar	Apr	May	Jun	Jul	Aug	Sep	Oct	Nov	Dec
# % Sat	153			151	28		150			152		
# % Sat 30 to 50	51			35	9		47			47		
Pop. Mean	28			27	41		26			27		
Std. Deviation	13			14	22		10			11		
% % Sat 30 to 50	33%			23%	32%		31%			31%		



	Jan	Feb	Mar	Apr	May	Jun	Jul	Aug	Sep	Oct	Nov	Dec
# % Sat	153			151	28		150			152		
# % Sat > 50	9			10	7		5			4		
Pop. Mean	28			27	41		26			27		
Std. Deviation	13			14	22		10			11		
% % Sat > 50	6%			7%	25%		3%			3%		



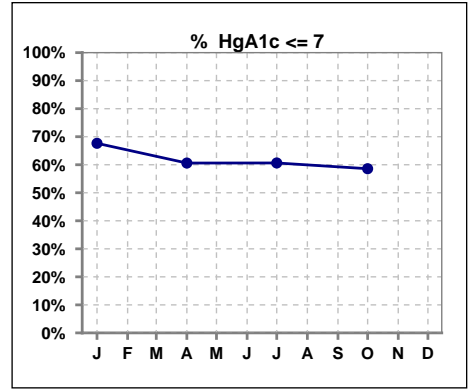
	Jan	Feb	Mar	Apr	May	Jun	Jul	Aug	Sep	Oct	Nov	Dec
# Patient	153	155	154	151	151	151	151	156	151	153	157	152
# Blood Transfusion	0	0	0	0	2	1	1	0	1	2	0	0



Methodology: a) All labs for 'Adequacy of Dialysis', 'Nutrition', 'Osteodystrophy', 'Anemia' and 'Diabetes' based on last value of month; b) BP's and #L processed are average of all values for month; c) Access data takes last access of month; d) Values for SGA and 'Infection Control' use most recent result.

VI. Diabetes

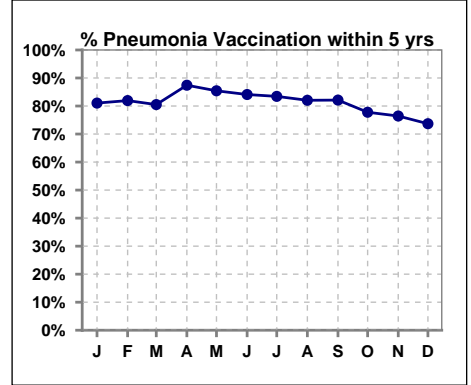
	Jan	Feb	Mar	Apr	May	Jun	Jul	Aug	Sep	Oct	Nov	Dec
# HgA1c	102			99			94			99		
# HgA1c <= 7	69			60			57			58		
Pop. Mean	6.7			6.7			6.8			6.9		
Std. Deviation	1.52			1.44			1.40			1.50		
% HgA1c <= 7	68%			61%			61%			59%		



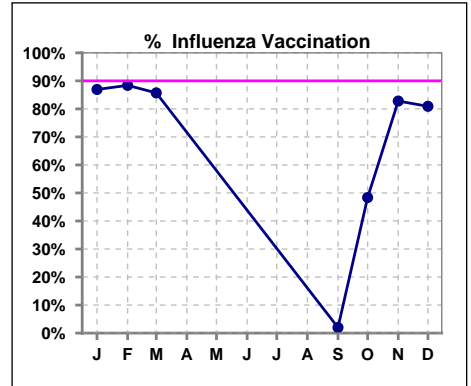
VII. Infection Control

Pneumonia vaccination within the past five years

	Jan	Feb	Mar	Apr	May	Jun	Jul	Aug	Sep	Oct	Nov	Dec
# Patient	153	155	154	151	151	151	151	156	151	153	157	152
# Pneumonia	124	127	124	132	129	127	126	128	124	119	120	112
% Pneumonia	81%	82%	81%	87%	85%	84%	83%	82%	82%	78%	76%	74%



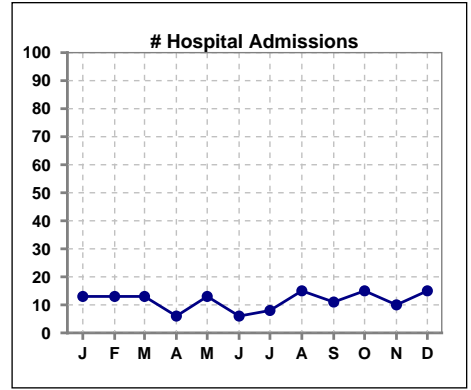
	Jan	Feb	Mar	Apr	May	Jun	Jul	Aug	Sep	Oct	Nov	Dec
# Patient	153	155	154						151	153	157	152
# Influenza	133	137	132						3	74	130	123
% Influenza	87%	88%	86%						2%	48%	83%	81%



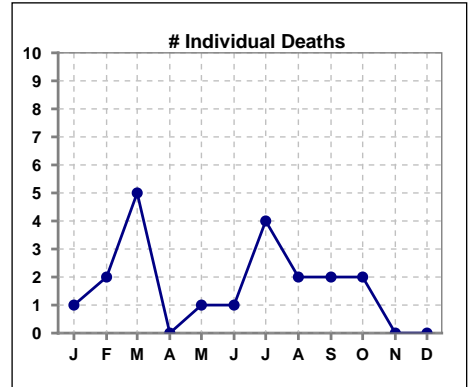
Methodology: a) All labs for 'Adequacy of Dialysis', 'Nutrition', 'Osteodystrophy', 'Anemia' and 'Diabetes' based on last value of month; b) BP's and #L processed are average of all values for month; c) Access data takes last access of month; d) Values for SGA and 'Infection Control' use most recent result.

VIII. Outcome measures

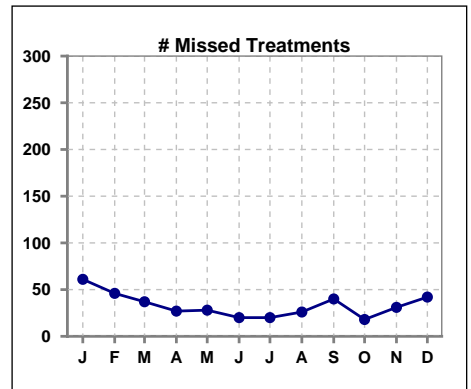
	Jan	Feb	Mar	Apr	May	Jun	Jul	Aug	Sep	Oct	Nov	Dec
# Patient	153	155	154	151	151	151	151	156	151	153	157	152
# Hospital Admissions	13	13	13	6	13	6	8	15	11	15	10	15



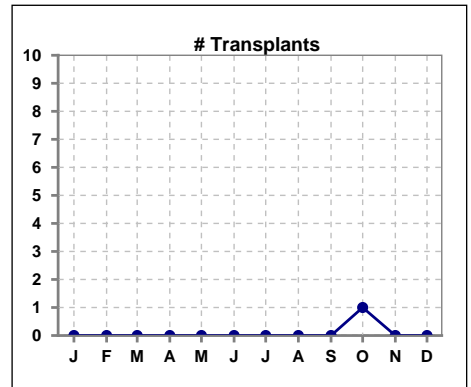
	Jan	Feb	Mar	Apr	May	Jun	Jul	Aug	Sep	Oct	Nov	Dec
# Patient	153	155	154	151	151	151	151	156	151	153	157	152
# Individual Deaths	1	2	5	0	1	1	4	2	2	2	0	0



	Jan	Feb	Mar	Apr	May	Jun	Jul	Aug	Sep	Oct	Nov	Dec
# Patient	153	155	154	151	151	151	151	156	151	153	157	152
# Missed Treatments	61	46	37	27	28	20	20	26	40	18	31	42



	Jan	Feb	Mar	Apr	May	Jun	Jul	Aug	Sep	Oct	Nov	Dec
# Patient	153	155	154	151	151	151	151	156	151	153	157	152
# Transplants	0	0	0	0	0	0	0	0	0	1	0	0



Methodology: a) All labs for 'Adequacy of Dialysis', 'Nutrition', 'Osteodystrophy', 'Anemia' and 'Diabetes' based on last value of month; b) BP's and #L processed are average of all values for month; c) Access data takes last access of month; d) Values for SGA and 'Infection Control' use most recent result.