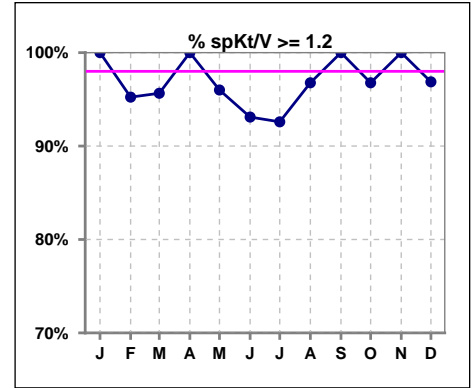
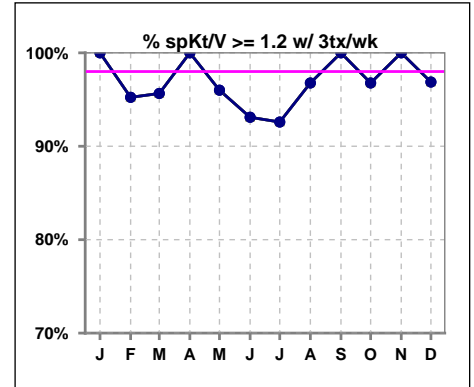


I. ADEQUACY OF DIALYSIS

	Jan	Feb	Mar	Apr	May	Jun	Jul	Aug	Sep	Oct	Nov	Dec
# spKt/V	19	21	23	25	25	29	27	31	31	31	31	32
# spKt/V >= 1.2	19	20	22	25	24	27	25	30	31	30	31	31
Pop. Mean	1.64	1.59	1.54	1.48	1.50	1.52	1.58	1.59	1.57	1.55	1.62	1.61
Std. Deviation	0.22	0.22	0.28	0.15	0.23	0.25	0.24	0.26	0.22	0.27	0.23	0.30
% spKt/V >= 1.2	100%	95%	96%	100%	96%	93%	93%	97%	100%	97%	100%	97%

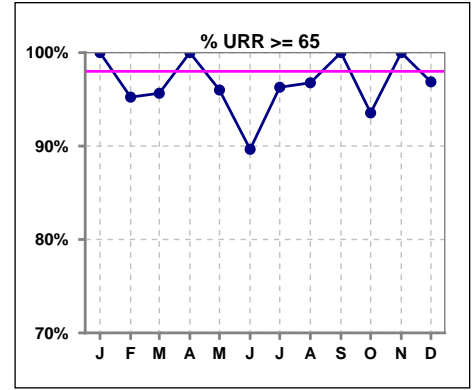


	Jan	Feb	Mar	Apr	May	Jun	Jul	Aug	Sep	Oct	Nov	Dec
# spKt/V w/ 3tx/wk	19	21	23	25	25	29	27	31	31	31	31	32
# spKt/V >= 1.2 w/3tx/wk	19	20	22	25	24	27	25	30	31	30	31	31
Pop. Mean	1.64	1.59	1.54	1.48	1.50	1.52	1.58	1.59	1.56	1.55	1.62	1.61
Std. Deviation	0.22	0.22	0.28	0.15	0.23	0.25	0.24	0.26	0.22	0.26	0.23	0.30
% >= 1.2 w/3tx/wk	100%	95%	96%	100%	96%	93%	93%	97%	100%	97%	100%	97%

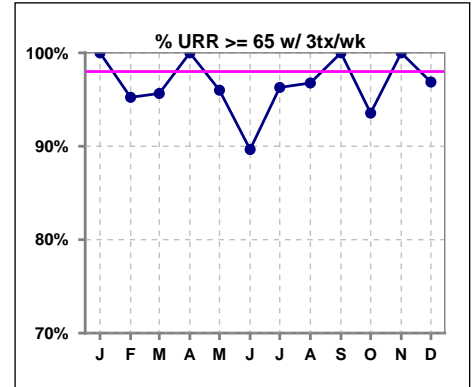


I. ADEQUACY OF DIALYSIS - CONT.

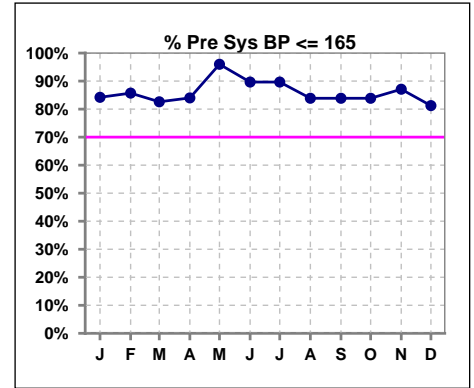
	Jan	Feb	Mar	Apr	May	Jun	Jul	Aug	Sep	Oct	Nov	Dec
# URR	19	21	23	25	25	29	27	31	31	31	31	32
# URR >= 65	19	20	22	25	24	26	26	30	31	29	31	31
Pop. Mean	75	74	73	72	72	73	74	74	74	73	75	75
Std. Deviation	4.00	5.15	8.37	3.49	6.07	5.69	5.39	5.65	4.97	6.75	4.63	6.72
% URR >= 65	100%	95%	96%	100%	96%	90%	96%	97%	100%	94%	100%	97%



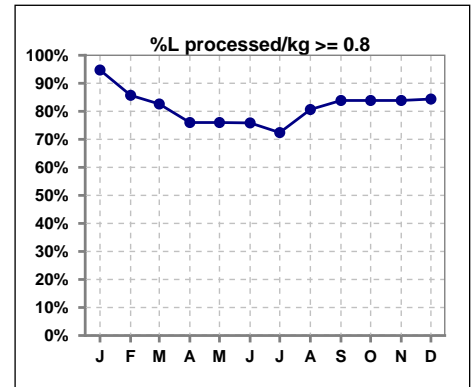
	Jan	Feb	Mar	Apr	May	Jun	Jul	Aug	Sep	Oct	Nov	Dec
# URR w/ 3tx/wk	19	21	23	25	25	29	27	31	31	31	31	32
# URR>=65 w/ 3tx/wk	19	20	22	25	24	26	26	30	31	29	31	31
Pop. Mean	75	74	73	72	72	73	74	74	74	73	75	75
Std. Deviation	4.00	5.15	8.37	3.49	6.07	5.69	5.39	5.65	4.97	6.75	4.63	6.72
% URR>=65 w/ 3tx/wk	100%	95%	96%	100%	96%	90%	96%	97%	100%	94%	100%	97%



	Jan	Feb	Mar	Apr	May	Jun	Jul	Aug	Sep	Oct	Nov	Dec
# Pre Sys BP	19	21	23	25	25	29	29	31	31	31	31	32
# Pre Sys BP <= 165	16	18	19	21	24	26	26	26	27	27	28	27
Pop. Mean	148	146	147	146	144	144	142	142	143	145	144	147
Std. Deviation	20.0	17.9	19.0	19.9	21.8	17.0	21.5	21.9	19.8	19.3	18.4	18.6
% Pre Sys BP <=165	84%	86%	83%	84%	96%	90%	90%	84%	84%	84%	87%	81%



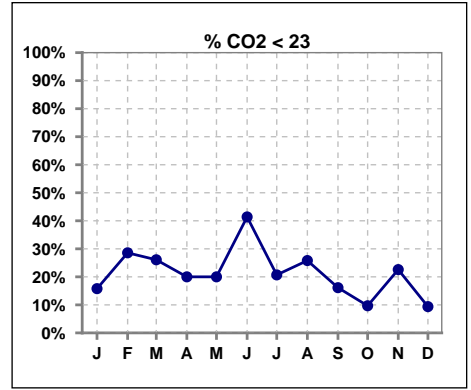
	Jan	Feb	Mar	Apr	May	Jun	Jul	Aug	Sep	Oct	Nov	Dec
# L processed/kg	19	21	23	25	25	29	29	31	31	31	31	32
# L processed/kg>=0.8	18	18	19	19	19	22	21	25	26	26	26	27
Pop. Mean	1	1	1	1	1	1	1	1	1	1	1	1
Std. Deviation	0.2	0.2	0.3	0.3	0.3	0.3	0.3	0.2	0.2	0.3	0.2	0.2
% L processed/kg>=0.8	95%	86%	83%	76%	76%	76%	72%	81%	84%	84%	84%	84%



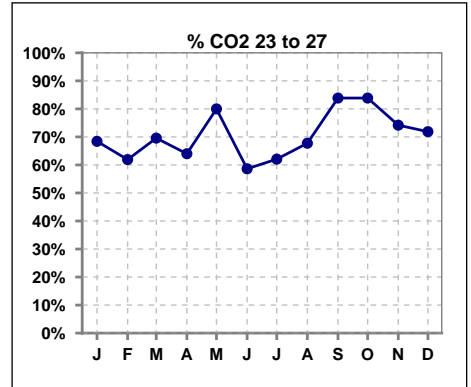
Methodology: a) All labs for 'Adequacy of Dialysis', 'Nutrition', 'Osteodystrophy', 'Anemia' and 'Diabetes' based on last value of month; b) BP's and #L processed are average of all values for month; c) Access data takes last access of month; d) Values for SGA and 'Infection Control' use most recent result.

I. ADEQUACY OF DIALYSIS - CONT.

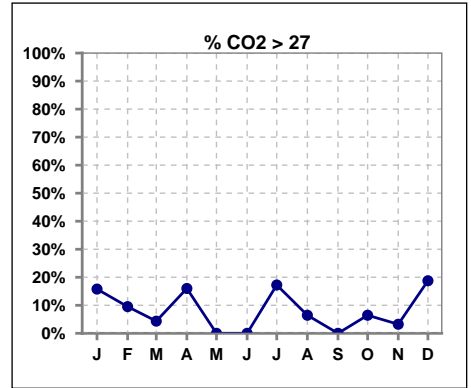
	Jan	Feb	Mar	Apr	May	Jun	Jul	Aug	Sep	Oct	Nov	Dec
# CO2	19	21	23	25	25	29	29	31	31	31	31	32
# CO2 < 23	3	6	6	5	5	12	6	8	5	3	7	3
Pop. Mean	25	24	24	25	24	23	25	24	24	24	24	25
Std. Deviation	2.66	2.19	2.68	3.28	1.92	2.68	2.81	2.37	2.24	2.39	2.54	3.80
% CO2 < 23	16%	29%	26%	20%	20%	41%	21%	26%	16%	10%	23%	9%



	Jan	Feb	Mar	Apr	May	Jun	Jul	Aug	Sep	Oct	Nov	Dec
# CO2	19	21	23	25	25	29	29	31	31	31	31	32
# CO2 23 to 27	13	13	16	16	20	17	18	21	26	26	23	23
Pop. Mean	25	24	24	25	24	23	25	24	24	24	24	25
Std. Deviation	2.66	2.19	2.68	3.28	1.92	2.68	2.81	2.37	2.24	2.39	2.54	3.80
% CO2 23 to 27	68%	62%	70%	64%	80%	59%	62%	68%	84%	84%	74%	72%



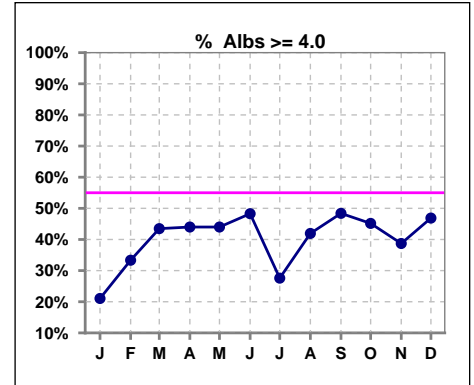
	Jan	Feb	Mar	Apr	May	Jun	Jul	Aug	Sep	Oct	Nov	Dec
# CO2	19	21	23	25	25	29	29	31	31	31	31	32
# CO2 > 27	3	2	1	4	0	0	5	2	0	2	1	6
Pop. Mean	25	24	24	25	24	23	25	24	24	24	24	25
Std. Deviation	2.66	2.19	2.68	3.28	1.92	2.68	2.81	2.37	2.24	2.39	2.54	3.80
% CO2 > 27	16%	10%	4%	16%	0%	0%	17%	6%	0%	6%	3%	19%



*Albumin values use BCG method - as of July 2001

II. NUTRITION

	Jan	Feb	Mar	Apr	May	Jun	Jul	Aug	Sep	Oct	Nov	Dec
# Albumin	19	21	23	25	25	29	29	31	31	31	31	32
# Albumin >= 4.0	4	7	10	11	11	14	8	13	15	14	12	15
Pop. Mean	3.6	3.8	3.8	3.8	3.8	3.8	3.6	3.7	3.8	3.8	3.8	3.8
Std. Deviation	0.50	0.44	0.50	0.56	0.46	0.58	0.57	0.59	0.50	0.45	0.40	0.40
% Alb >= 4.0	21%	33%	43%	44%	44%	48%	28%	42%	48%	45%	39%	47%

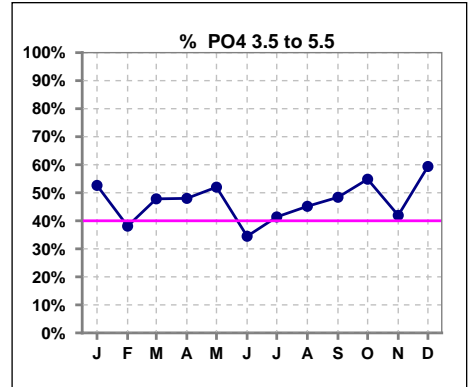


Methodology: a) All labs for 'Adequacy of Dialysis', 'Nutrition', 'Osteodystrophy', 'Anemia' and 'Diabetes' based on last value of month; b) BP's and #L processed are average of all values for month; c) Access data takes last access of month; d) Values for SGA and 'Infection Control' use most recent result.

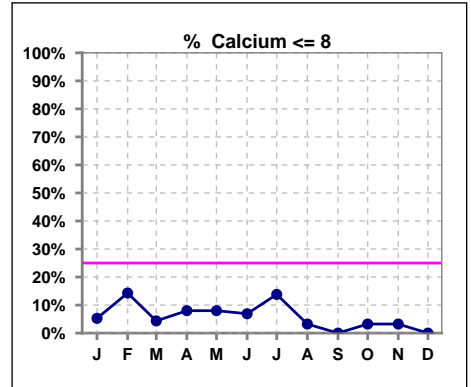
Lab methodology for PTH changed January 2012

III. OSTEODYSTROPHY

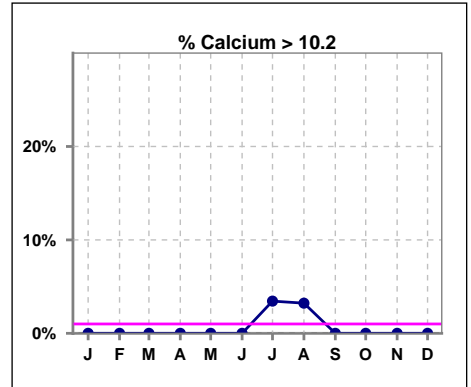
	Jan	Feb	Mar	Apr	May	Jun	Jul	Aug	Sep	Oct	Nov	Dec
# PO4	19	21	23	25	25	29	29	31	31	31	31	32
# PO4 3.5 to 5.5	10	8	11	12	13	10	12	14	15	17	13	19
Pop. Mean	5.0	5.6	5.7	5.6	5.6	6.0	5.4	5.2	5.5	5.7	6.0	5.5
Std. Deviation	1.26	1.54	1.47	1.69	1.38	1.74	1.51	1.78	1.45	1.75	1.72	1.54
% PO4 3.5 to 5.5	53%	38%	48%	48%	52%	34%	41%	45%	48%	55%	42%	59%



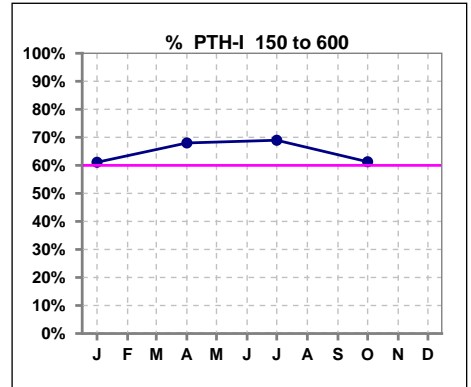
	Jan	Feb	Mar	Apr	May	Jun	Jul	Aug	Sep	Oct	Nov	Dec
# Calcium	19	21	23	25	25	29	29	31	31	31	31	32
# Calcium <= 8	1	3	1	2	2	2	4	1	0	1	1	0
Pop. Mean	9.1	9.0	9.2	9.1	9.0	9.1	9.0	9.2	9.3	9.2	9.1	9.1
Std. Deviation	0.73	0.77	0.56	0.66	0.88	0.71	0.74	0.64	0.51	0.65	0.66	0.66
% Calcium <= 8	5%	14%	4%	8%	8%	7%	14%	3%	0%	3%	3%	0%



	Jan	Feb	Mar	Apr	May	Jun	Jul	Aug	Sep	Oct	Nov	Dec
# Calcium	19	21	23	25	25	29	29	31	31	31	31	32
# Calcium > 10.2	0	0	0	0	0	0	1	1	0	0	0	0
Pop. Mean	9.1	9.0	9.2	9.1	9.0	9.1	9.0	9.2	9.3	9.2	9.1	9.1
Std. Deviation	0.73	0.77	0.56	0.66	0.88	0.71	0.74	0.64	0.51	0.65	0.66	0.66
% Calcium > 10.2	0%	0%	0%	0%	0%	0%	3%	3%	0%	0%	0%	0%



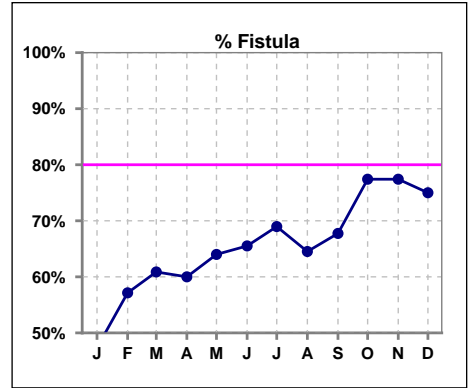
	Jan	Feb	Mar	Apr	May	Jun	Jul	Aug	Sep	Oct	Nov	Dec
# PTH-I	18			25			29			31		
# PTH-I 150 to 600	11			17			20			19		
Pop. Mean	368			346			354			432		
Std. Deviation	290			293			275			390		
% PTH-I 150 to 600	61%			68%			69%			61%		



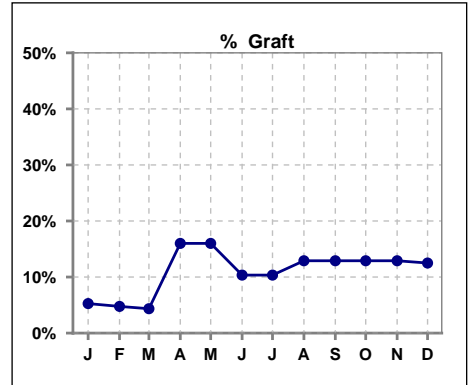
Methodology: a) All labs for 'Adequacy of Dialysis', 'Nutrition', 'Osteodystrophy', 'Anemia' and 'Diabetes' based on last value of month; b) BP's and #L processed are average of all values for month; c) Access data takes last access of month; d) Values for SGA and 'Infection Control' use most recent result.

IV. ACCESS

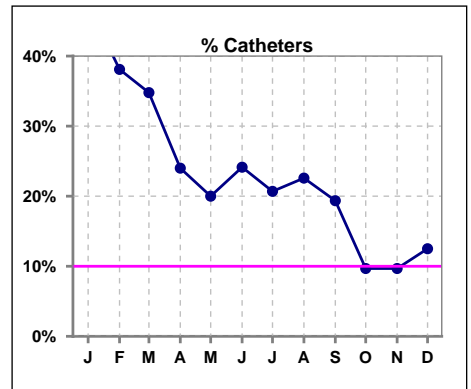
	Jan	Feb	Mar	Apr	May	Jun	Jul	Aug	Sep	Oct	Nov	Dec
# Access	19	21	23	25	25	29	29	31	31	31	31	32
# Fistula	9	12	14	15	16	19	20	20	21	24	24	24
% Fistula	47%	57%	61%	60%	64%	66%	69%	65%	68%	77%	77%	75%



	Jan	Feb	Mar	Apr	May	Jun	Jul	Aug	Sep	Oct	Nov	Dec
# Access	19	21	23	25	25	29	29	31	31	31	31	32
# Graft	1	1	1	4	4	3	3	4	4	4	4	4
% Graft	5%	5%	4%	16%	16%	10%	10%	13%	13%	13%	13%	13%



	Jan	Feb	Mar	Apr	May	Jun	Jul	Aug	Sep	Oct	Nov	Dec
# Access	19	21	23	25	25	29	29	31	31	31	31	32
# Catheters	9	8	8	6	5	7	6	7	6	3	3	4
% Catheters	47%	38%	35%	24%	20%	24%	21%	23%	19%	10%	10%	13%



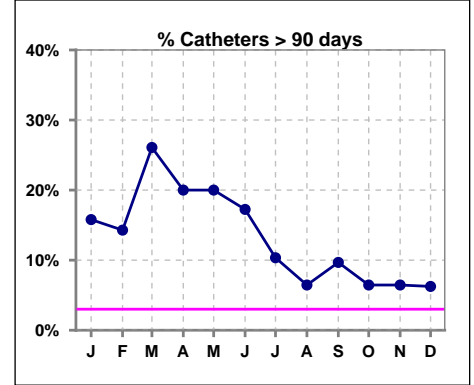
Methodology: a) All labs for 'Adequacy of Dialysis', 'Nutrition', 'Osteodystrophy', 'Anemia' and 'Diabetes' based on last value of month; b) BP's and #L processed are average of all values for month; c) Access data takes last access of month; d) Values for SGA and 'Infection Control' use most recent result.

IV. ACCESS - CONT.

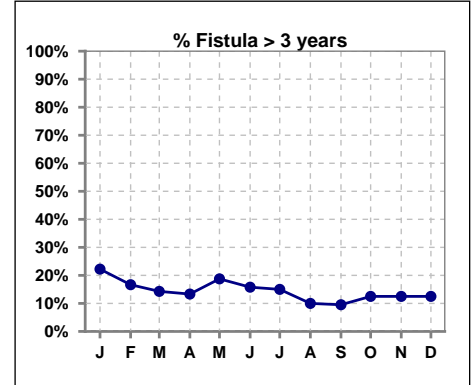
Catheters > 90 days

	Jan	Feb	Mar	Apr	May	Jun	Jul	Aug	Sep	Oct	Nov	Dec
# Access	19	21	23	25	25	29	29	31	31	31	31	32
# Catheters	3	3	6	5	5	5	3	2	3	2	2	2
% Catheters	16%	14%	26%	20%	20%	17%	10%	6%	10%	6%	6%	6%

Definition: Catheter in use on last treatment of the month



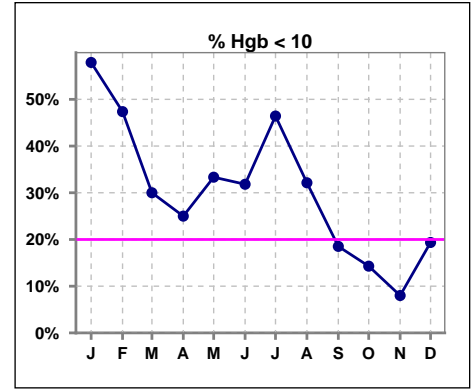
	Jan	Feb	Mar	Apr	May	Jun	Jul	Aug	Sep	Oct	Nov	Dec
# Fistula	9	12	14	15	16	19	20	20	21	24	24	24
# Fistula > 3 yrs	2	2	2	2	3	3	3	2	2	3	3	3
% Fistula > 3 yrs	22%	17%	14%	13%	19%	16%	15%	10%	10%	13%	13%	13%



V. ANEMIA

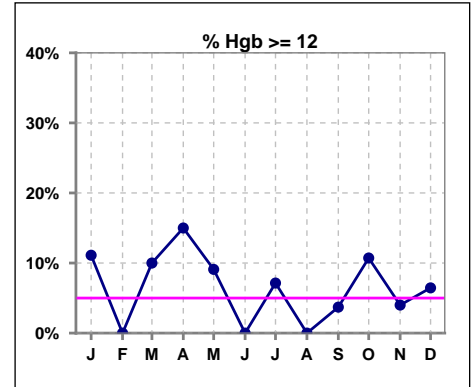
	Jan	Feb	Mar	Apr	May	Jun	Jul	Aug	Sep	Oct	Nov	Dec
# Hgb	19	19	20	20	21	22	28	28	27	28	25	31
# Hgb < 10	11	9	6	5	7	7	13	9	5	4	2	6
Pop. Mean	9.7	10.1	10.6	10.8	10.7	10.3	10.0	10.1	10.7	11.1	11.0	10.8
Std. Deviation	1.7	1.1	1.3	1.2	1.2	0.8	1.3	1.3	1.2	1.1	0.8	1.0
% Hgb < 10	58%	47%	30%	25%	33%	32%	46%	32%	19%	14%	8%	19%

Note: Excludes patients who received no ESA in month.



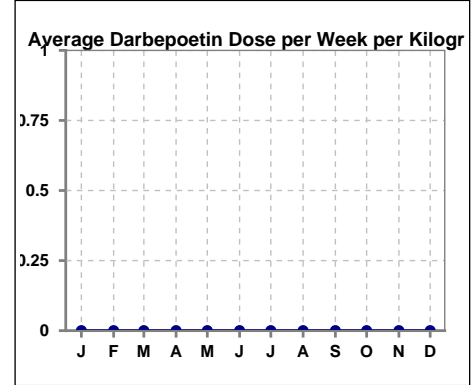
	Jan	Feb	Mar	Apr	May	Jun	Jul	Aug	Sep	Oct	Nov	Dec
# Hgb	18	19	20	20	22	22	28	28	27	28	25	31
# Hgb >= 12	2	0	2	3	2	0	2	0	1	3	1	2
Pop. Mean	9.8	10.1	10.6	10.8	10.7	10.3	10.0	10.1	10.7	11.1	11.0	10.8
Std. Deviation	1.6	1.1	1.3	1.2	1.2	0.8	1.3	1.3	1.2	1.1	0.8	1.0
% Hgb >= 12	11%	0%	10%	15%	9%	0%	7%	0%	4%	11%	4%	6%

Note: Excludes patients who received no ESA in month.



Average Darbepoetin Dose per Week per Kilogram

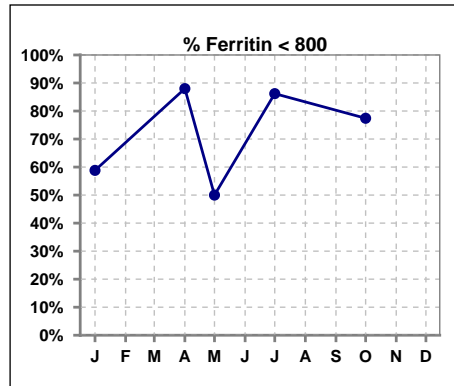
	Jan	Feb	Mar	Apr	May	Jun	Jul	Aug	Sep	Oct	Nov	Dec
# Average Darbepoetin	0	0	0	0	0	0	0	0	0	0	0	0



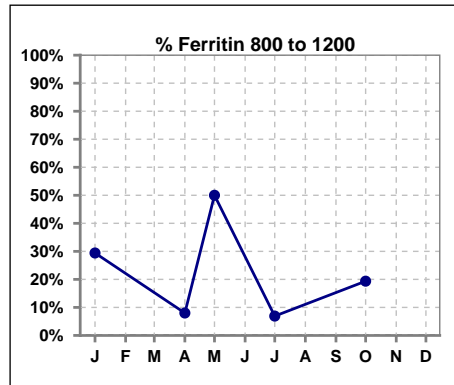
V. ANEMIA - CONT.

Iron Profile

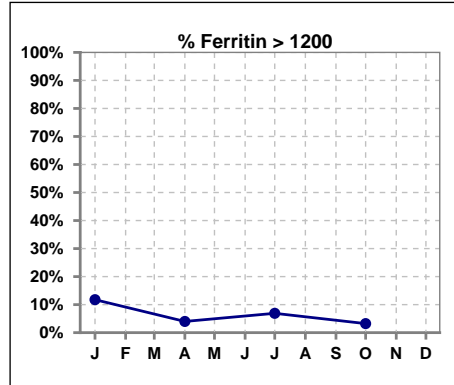
	Jan	Feb	Mar	Apr	May	Jun	Jul	Aug	Sep	Oct	Nov	Dec
# Ferritin	17			25	4		29			31		
# Ferritin < 800	10			22	2		25			24		
Pop. Mean	764			489	625		611			519		
Std. Deviation	342			275	298		320			335		
% Ferritin < 800	59%			88%	50%		86%			77%		



	Jan	Feb	Mar	Apr	May	Jun	Jul	Aug	Sep	Oct	Nov	Dec
# Ferritin	17			25	4		29			31		
# Ferritin 800 to 1200	5			2	2		2			6		
Pop. Mean	764			489	625		611			519		
Std. Deviation	342			275	298		320			335		
% Ferritin 800 to 1200	29%			8%	50%		7%			19%		



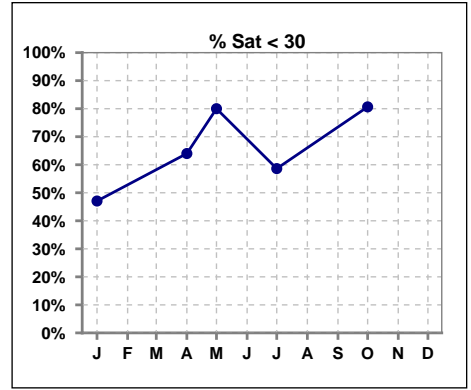
	Jan	Feb	Mar	Apr	May	Jun	Jul	Aug	Sep	Oct	Nov	Dec
# Ferritin	17			25	4		29			31		
# Ferritin > 1200	2			1			2			1		
Pop. Mean	764			489	625		611			519		
Std. Deviation	342			275	298		320			335		
% Ferritin > 1200	12%			4%			7%			3%		



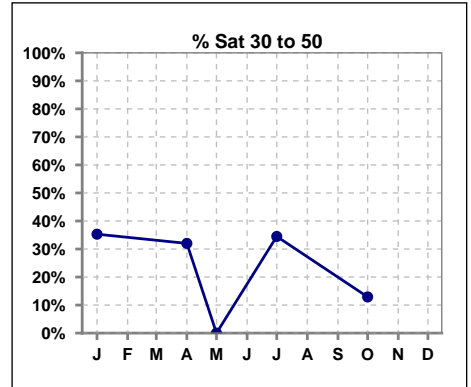
Methodology: a) All labs for 'Adequacy of Dialysis', 'Nutrition', 'Osteodystrophy', 'Anemia' and 'Diabetes' based on last value of month; b) BP's and #L processed are average of all values for month; c) Access data takes last access of month; d) Values for SGA and 'Infection Control' use most recent result.

V. ANEMIA - CONT.

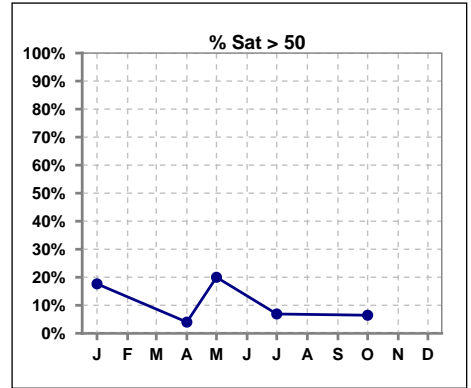
	Jan	Feb	Mar	Apr	May	Jun	Jul	Aug	Sep	Oct	Nov	Dec
# % Sat	17			25	5		29			31		
# % Sat < 30	8			16	4		17			25		
Pop. Mean	34			27	26		29			25		
Std. Deviation	15			14	17		12			14		
% % Sat < 30	47%			64%	80%		59%			81%		



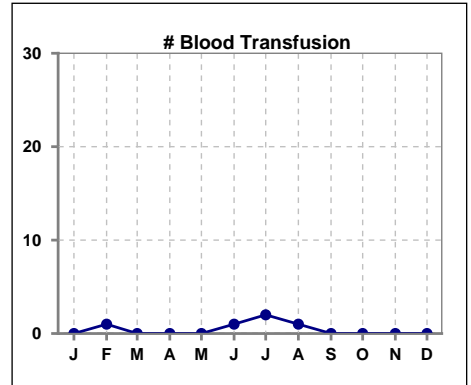
	Jan	Feb	Mar	Apr	May	Jun	Jul	Aug	Sep	Oct	Nov	Dec
# % Sat	17			25	5		29			31		
# % Sat 30 to 50	6			8	0		10			4		
Pop. Mean	34			27	26		29			25		
Std. Deviation	15			14	17		12			14		
% % Sat 30 to 50	35%			32%	0%		34%			13%		



	Jan	Feb	Mar	Apr	May	Jun	Jul	Aug	Sep	Oct	Nov	Dec
# % Sat	17			25	5		29			31		
# % Sat > 50	3			1	1		2			2		
Pop. Mean	34			27	26		29			25		
Std. Deviation	15			14	17		12			14		
% % Sat > 50	18%			4%	20%		7%			6%		



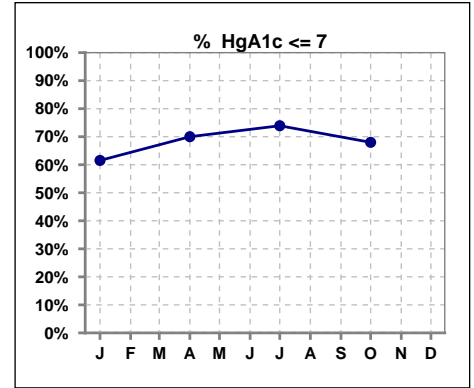
	Jan	Feb	Mar	Apr	May	Jun	Jul	Aug	Sep	Oct	Nov	Dec
# Patient	19	21	23	25	25	29	29	31	31	31	31	32
# Blood Transfusion	0	1	0	0	0	1	2	1	0	0	0	0



Methodology: a) All labs for 'Adequacy of Dialysis', 'Nutrition', 'Osteodystrophy', 'Anemia' and 'Diabetes' based on last value of month; b) BP's and #L processed are average of all values for month; c) Access data takes last access of month; d) Values for SGA and 'Infection Control' use most recent result.

VI. Diabetes

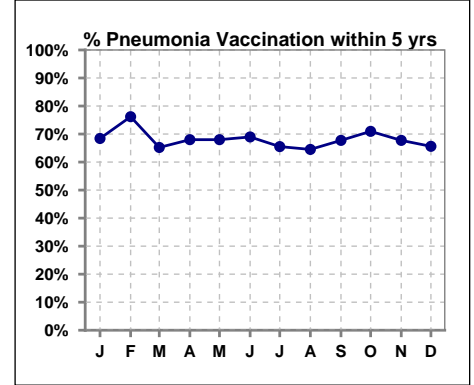
	Jan	Feb	Mar	Apr	May	Jun	Jul	Aug	Sep	Oct	Nov	Dec
# HgA1c	13			20			23			25		
# HgA1c <= 7	8			14			17			17		
Pop. Mean	6.8			6.8			6.7			6.8		
Std. Deviation	1.47			1.76			1.31			1.49		
% HgA1c <= 7	62%			70%			74%			68%		



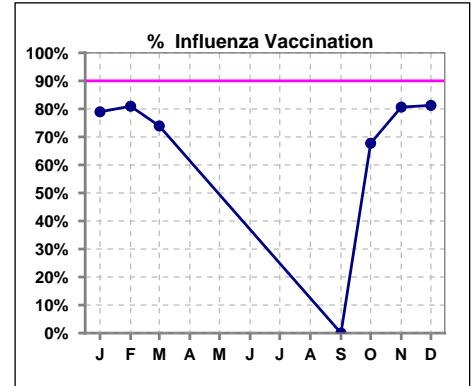
VII. Infection Control

Pneumonia vaccination within the past five years

	Jan	Feb	Mar	Apr	May	Jun	Jul	Aug	Sep	Oct	Nov	Dec
# Patient	19	21	23	25	25	29	29	31	31	31	31	32
# Pneumonia	13	16	15	17	17	20	19	20	21	22	21	21
% Pneumonia	68%	76%	65%	68%	68%	69%	66%	65%	68%	71%	68%	66%



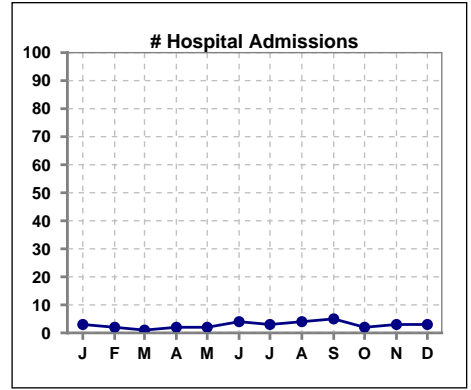
	Jan	Feb	Mar	Apr	May	Jun	Jul	Aug	Sep	Oct	Nov	Dec
# Patient	19	21	23						31	31	31	32
# Influenza	15	17	17						0	21	25	26
% Influenza	79%	81%	74%						0%	68%	81%	81%



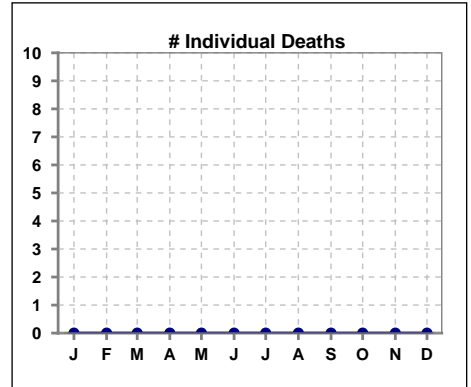
Methodology: a) All labs for 'Adequacy of Dialysis', 'Nutrition', 'Osteodystrophy', 'Anemia' and 'Diabetes' based on last value of month; b) BP's and #L processed are average of all values for month; c) Access data takes last access of month; d) Values for SGA and 'Infection Control' use most recent result.

VIII. Outcome measures

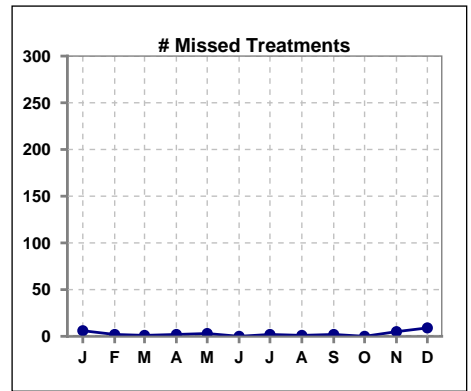
	Jan	Feb	Mar	Apr	May	Jun	Jul	Aug	Sep	Oct	Nov	Dec
# Patient	19	21	23	25	25	29	29	31	31	31	31	32
# Hospital Admissions	3	2	1	2	2	4	3	4	5	2	3	3



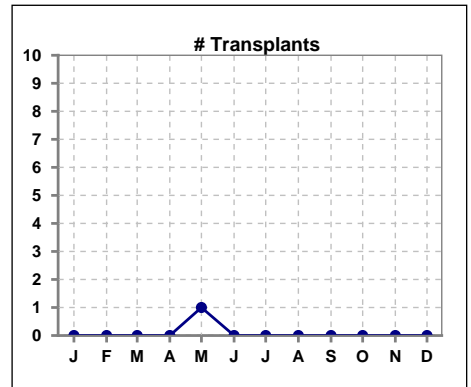
	Jan	Feb	Mar	Apr	May	Jun	Jul	Aug	Sep	Oct	Nov	Dec
# Patient	19	21	23	25	25	29	29	31	31	31	31	32
# Individual Deaths	0	0	0	0	0	0	0	0	0	0	0	0



	Jan	Feb	Mar	Apr	May	Jun	Jul	Aug	Sep	Oct	Nov	Dec
# Patient	19	21	23	25	25	29	29	31	31	31	31	32
# Missed Treatments	6	2	1	2	3	0	2	1	2	0	5	9



	Jan	Feb	Mar	Apr	May	Jun	Jul	Aug	Sep	Oct	Nov	Dec
# Patient	19	21	23	25	25	29	29	31	31	31	31	32
# Transplants	0	0	0	0	1	0	0	0	0	0	0	0



Methodology: a) All labs for 'Adequacy of Dialysis', 'Nutrition', 'Osteodystrophy', 'Anemia' and 'Diabetes' based on last value of month; b) BP's and #L processed are average of all values for month; c) Access data takes last access of month; d) Values for SGA and 'Infection Control' use most recent result.