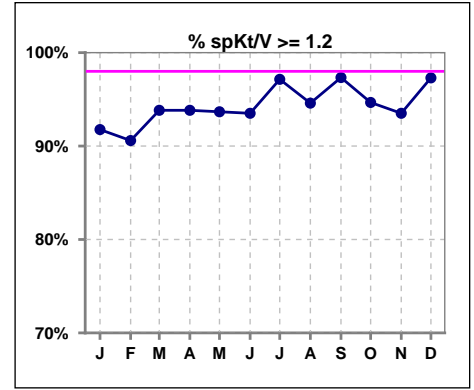
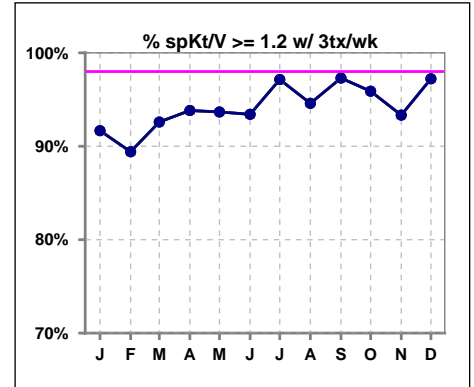


I. ADEQUACY OF DIALYSIS

	Jan	Feb	Mar	Apr	May	Jun	Jul	Aug	Sep	Oct	Nov	Dec
# spKt/V	85	85	81	81	79	77	70	74	75	75	77	74
# spKt/V >= 1.2	78	77	76	76	74	72	68	70	73	71	72	72
Pop. Mean	1.62	1.58	1.60	1.62	1.59	1.60	1.65	1.62	1.64	1.62	1.62	1.65
Std. Deviation	0.34	0.35	0.33	0.34	0.34	0.33	0.32	0.31	0.31	0.32	0.34	0.30
% spKt/V >= 1.2	92%	91%	94%	94%	94%	94%	97%	95%	97%	95%	94%	97%



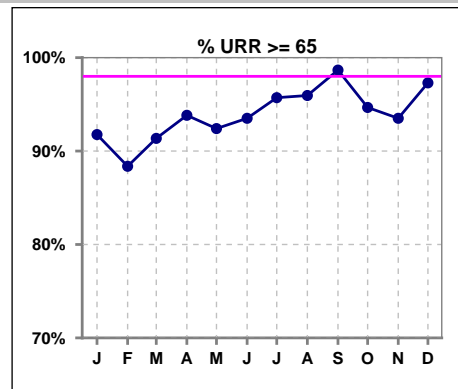
	Jan	Feb	Mar	Apr	May	Jun	Jul	Aug	Sep	Oct	Nov	Dec
# spKt/V w/ 3tx/wk	84	85	81	81	79	76	70	74	74	73	75	72
# spKt/V >= 1.2 w/3tx/wk	77	76	75	76	74	71	68	70	72	70	70	70
Pop. Mean	1.61	1.58	1.60	1.62	1.59	1.61	1.65	1.62	1.64	1.64	1.63	1.65
Std. Deviation	0.33	0.35	0.33	0.34	0.34	0.33	0.32	0.31	0.31	0.31	0.34	0.31
% >= 1.2 w/3tx/wk	92%	89%	93%	94%	94%	93%	97%	95%	97%	96%	93%	97%



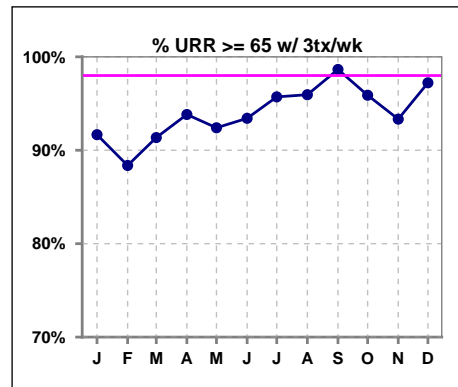
Methodology: a) All labs for 'Adequacy of Dialysis', 'Nutrition', 'Osteodystrophy', 'Anemia' and 'Diabetes' based on last value of month; b) BP's and #L processed are average of all values for month; c) Access data takes last access of month; d) Values for SGA and 'Infection Control' use most recent result.

I. ADEQUACY OF DIALYSIS - CONT.

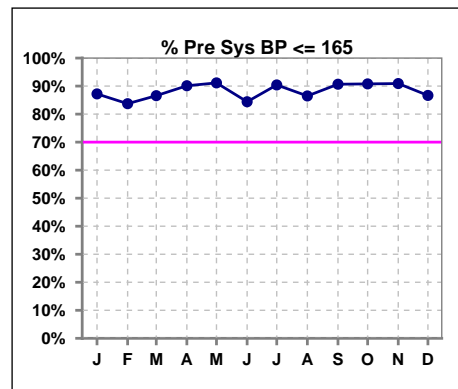
	Jan	Feb	Mar	Apr	May	Jun	Jul	Aug	Sep	Oct	Nov	Dec
# URR	85	86	81	81	79	77	70	74	75	75	77	74
# URR >= 65	78	76	74	76	73	72	67	71	74	71	72	72
Pop. Mean	74	73	74	75	74	74	75	75	75	75	74	75
Std. Deviation	6.84	7.70	7.01	6.61	7.00	6.87	6.21	6.06	5.99	6.53	7.34	5.80
% URR >= 65	92%	88%	91%	94%	92%	94%	96%	96%	99%	95%	94%	97%



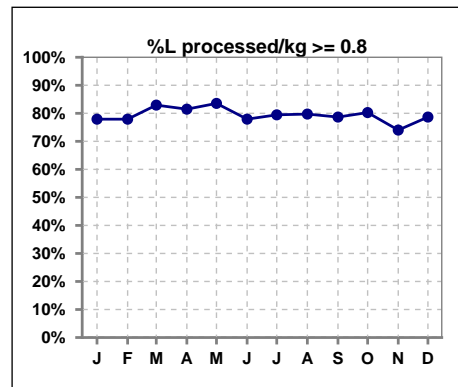
	Jan	Feb	Mar	Apr	May	Jun	Jul	Aug	Sep	Oct	Nov	Dec
# URR w/ 3tx/wk	84	86	81	81	79	76	70	74	74	73	75	72
# URR>=65 w/ 3tx/wk	77	76	74	76	73	71	67	71	73	70	70	70
Pop. Mean	74	73	74	75	74	74	75	75	75	75	75	75
Std. Deviation	6.76	7.70	7.01	6.61	7.00	6.92	6.21	6.06	5.99	5.84	7.34	5.87
% URR>=65 w/ 3tx/wk	92%	88%	91%	94%	92%	93%	96%	96%	99%	96%	93%	97%



	Jan	Feb	Mar	Apr	May	Jun	Jul	Aug	Sep	Oct	Nov	Dec
# Pre Sys BP	86	86	82	81	79	77	73	74	75	76	77	75
# Pre Sys BP <= 165	77	75	74	74	73	67	66	64	69	71	70	67
Pop. Mean	144	146	146	143	143	143	141	142	142	142	144	145
Std. Deviation	17.1	19.3	19.3	17.6	16.4	18.5	17.7	18.6	18.0	17.4	18.0	17.9
%Pre Sys BP <=165	87%	84%	87%	90%	91%	84%	90%	86%	91%	91%	91%	87%

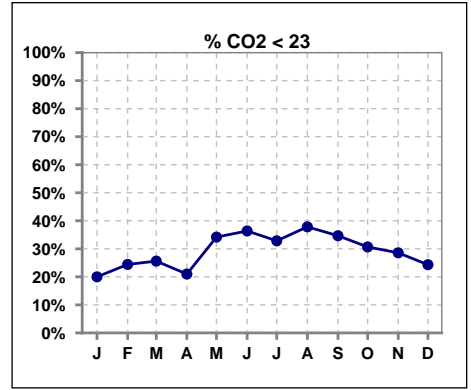


	Jan	Feb	Mar	Apr	May	Jun	Jul	Aug	Sep	Oct	Nov	Dec
# L processed/kg	86	86	82	81	79	77	73	74	75	76	77	75
# L processed/kg>=0.8	67	67	68	66	66	60	58	59	59	61	57	59
Pop. Mean	1	1	1	1	1	1	1	1	1	1	1	1
Std. Deviation	0.5	0.3	0.3	0.3	0.3	0.3	0.3	0.3	0.3	0.3	0.3	0.3
% L processed/kg>=0.8	78%	78%	83%	81%	84%	78%	79%	80%	79%	80%	74%	79%

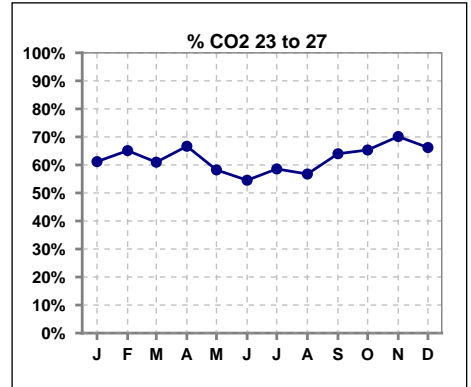


I. ADEQUACY OF DIALYSIS - CONT.

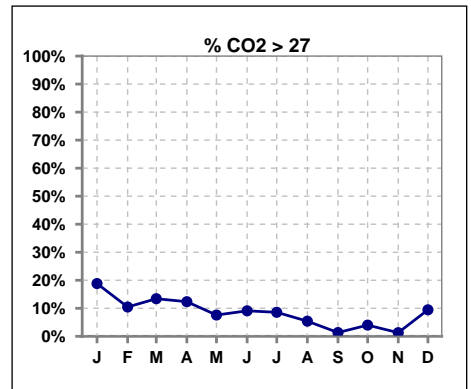
	Jan	Feb	Mar	Apr	May	Jun	Jul	Aug	Sep	Oct	Nov	Dec
# CO2	85	86	82	81	79	77	70	74	75	75	77	74
# CO2 < 23	17	21	21	17	27	28	23	28	26	23	22	18
Pop. Mean	25	24	24	25	24	24	24	23	23	24	23	24
Std. Deviation	2.68	2.67	2.53	2.82	2.43	2.73	2.71	2.57	2.35	2.41	3.16	2.72
% CO2 < 23	20%	24%	26%	21%	34%	36%	33%	38%	35%	31%	29%	24%



	Jan	Feb	Mar	Apr	May	Jun	Jul	Aug	Sep	Oct	Nov	Dec
# CO2	85	86	82	81	79	77	70	74	75	75	77	74
# CO2 23 to 27	52	56	50	54	46	42	41	42	48	49	54	49
Pop. Mean	25	24	24	25	24	24	24	23	23	24	23	24
Std. Deviation	2.68	2.67	2.53	2.82	2.43	2.73	2.71	2.57	2.35	2.41	3.16	2.72
% CO2 23 to 27	61%	65%	61%	67%	58%	55%	59%	57%	64%	65%	70%	66%



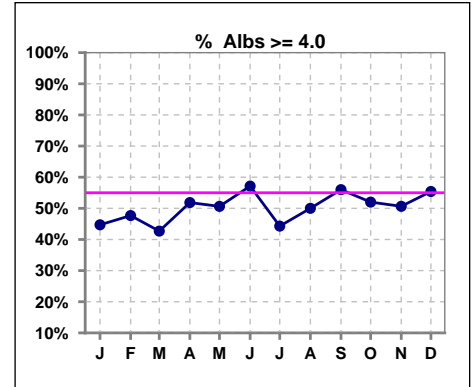
	Jan	Feb	Mar	Apr	May	Jun	Jul	Aug	Sep	Oct	Nov	Dec
# CO2	85	86	82	81	79	77	70	74	75	75	77	74
# CO2 > 27	16	9	11	10	6	7	6	4	1	3	1	7
Pop. Mean	25	24	24	25	24	24	24	23	23	24	23	24
Std. Deviation	2.68	2.67	2.53	2.82	2.43	2.73	2.71	2.57	2.35	2.41	3.16	2.72
% CO2 > 27	19%	10%	13%	12%	8%	9%	9%	5%	1%	4%	1%	9%



*Albumin values use BCG method - as of July 2001

II. NUTRITION

	Jan	Feb	Mar	Apr	May	Jun	Jul	Aug	Sep	Oct	Nov	Dec
# Albumin	85	86	82	81	79	77	70	74	75	75	77	74
# Albumin >= 4.0	38	41	35	42	40	44	31	37	42	39	39	41
Pop. Mean	3.8	3.8	3.8	3.9	3.9	3.9	3.8	3.9	3.9	3.9	3.9	3.9
Std. Deviation	0.42	0.43	0.42	0.40	0.39	0.42	0.41	0.43	0.36	0.36	0.39	0.35
% Alb >= 4.0	45%	48%	43%	52%	51%	57%	44%	50%	56%	52%	51%	55%

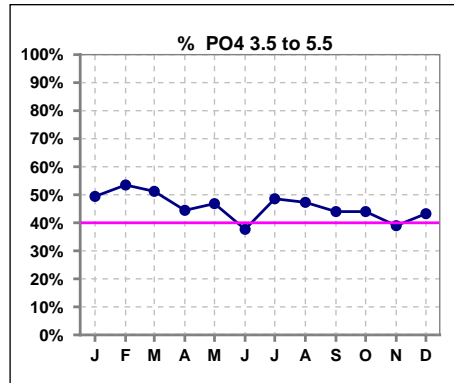


Methodology: a) All labs for 'Adequacy of Dialysis', 'Nutrition', 'Osteodystrophy', 'Anemia' and 'Diabetes' based on last value of month; b) BP's and #L processed are average of all values for month; c) Access data takes last access of month; d) Values for SGA and 'Infection Control' use most recent result.

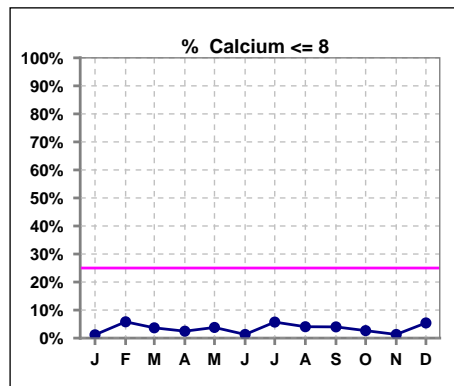
Lab methodology for PTH changed January 2012

III. OSTEODYSTROPHY

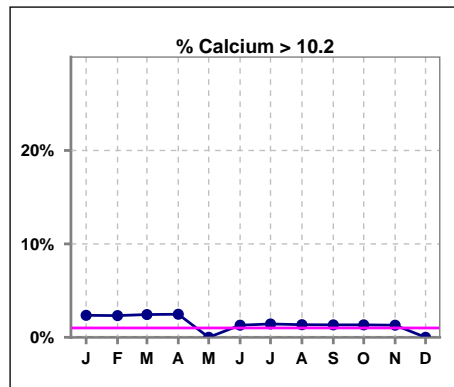
	Jan	Feb	Mar	Apr	May	Jun	Jul	Aug	Sep	Oct	Nov	Dec
# PO4	85	86	82	81	79	77	70	74	75	75	77	74
# PO4 3.5 to 5.5	42	46	42	36	37	29	34	35	33	33	30	32
Pop. Mean	5.6	5.7	5.6	5.9	5.6	5.8	5.5	5.6	5.6	5.7	5.8	5.7
Std. Deviation	1.78	1.84	1.56	1.77	1.79	1.83	1.50	1.51	1.45	1.50	1.77	1.62
% PO4 3.5 to 5.5	49%	53%	51%	44%	47%	38%	49%	47%	44%	44%	39%	43%



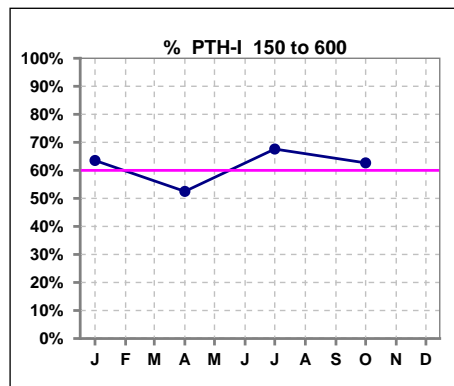
	Jan	Feb	Mar	Apr	May	Jun	Jul	Aug	Sep	Oct	Nov	Dec
# Calcium	85	86	82	81	79	77	70	74	75	75	77	74
# Calcium <= 8	1	5	3	2	3	1	4	3	3	2	1	4
Pop. Mean	9.2	9.2	9.3	9.4	9.2	9.2	9.2	9.2	9.3	9.3	9.2	9.1
Std. Deviation	0.57	0.57	0.56	0.58	0.53	0.56	0.57	0.57	0.54	0.52	0.64	0.67
% Calcium <= 8	1%	6%	4%	2%	4%	1%	6%	4%	4%	3%	1%	5%



	Jan	Feb	Mar	Apr	May	Jun	Jul	Aug	Sep	Oct	Nov	Dec
# Calcium	85	86	82	81	79	77	70	74	75	75	77	74
# Calcium > 10.2	2	2	2	2	0	1	1	1	1	1	1	0
Pop. Mean	9.2	9.2	9.3	9.4	9.2	9.2	9.2	9.2	9.3	9.3	9.2	9.1
Std. Deviation	0.57	0.57	0.56	0.58	0.53	0.56	0.57	0.57	0.54	0.52	0.64	0.67
% Calcium > 10.2	2%	2%	2%	2%	0%	1%	1%	1%	1%	1%	1%	0%



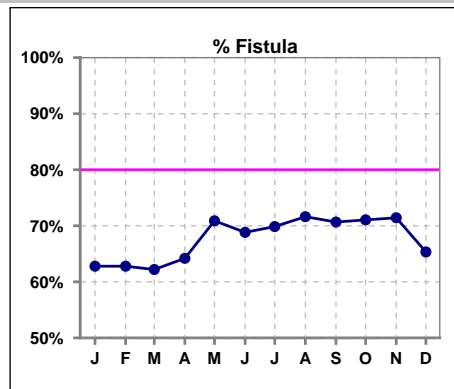
	Jan	Feb	Mar	Apr	May	Jun	Jul	Aug	Sep	Oct	Nov	Dec
# PTH-I	85			80			71			75		
# PTH-I 150 to 600	54			42			48			47		
Pop. Mean	557			537			543			512		
Std. Deviation	484			616			503			521		
% PTH-I 150 to 600	64%			53%			68%			63%		



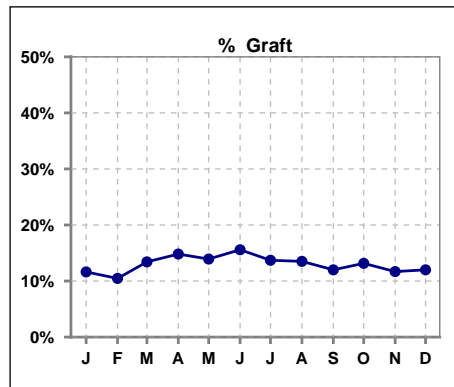
Methodology: a) All labs for 'Adequacy of Dialysis', 'Nutrition', 'Osteodystrophy', 'Anemia' and 'Diabetes' based on last value of month; b) BP's and #L processed are average of all values for month; c) Access data takes last access of month; d) Values for SGA and 'Infection Control' use most recent result.

IV. ACCESS

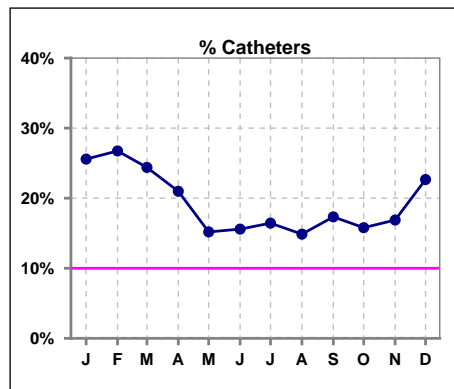
	Jan	Feb	Mar	Apr	May	Jun	Jul	Aug	Sep	Oct	Nov	Dec
# Access	86	86	82	81	79	77	73	74	75	76	77	75
# Fistula	54	54	51	52	56	53	51	53	53	54	55	49
% Fistula	63%	63%	62%	64%	71%	69%	70%	72%	71%	71%	71%	65%



	Jan	Feb	Mar	Apr	May	Jun	Jul	Aug	Sep	Oct	Nov	Dec
# Access	86	86	82	81	79	77	73	74	75	76	77	75
# Graft	10	9	11	12	11	12	10	10	9	10	9	9
% Graft	12%	10%	13%	15%	14%	16%	14%	14%	12%	13%	12%	12%



	Jan	Feb	Mar	Apr	May	Jun	Jul	Aug	Sep	Oct	Nov	Dec
# Access	86	86	82	81	79	77	73	74	75	76	77	75
# Catheters	22	23	20	17	12	12	12	11	13	12	13	17
% Catheters	26%	27%	24%	21%	15%	16%	16%	15%	17%	16%	17%	23%



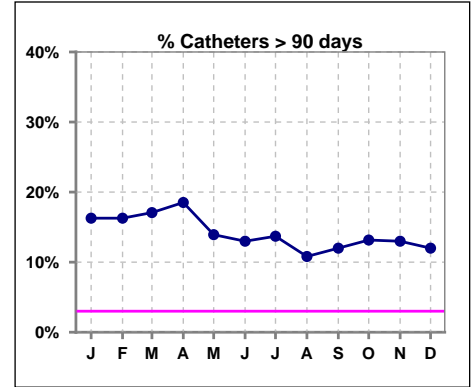
Methodology: a) All labs for 'Adequacy of Dialysis', 'Nutrition', 'Osteodystrophy', 'Anemia' and 'Diabetes' based on last value of month; b) BP's and #L processed are average of all values for month; c) Access data takes last access of month; d) Values for SGA and 'Infection Control' use most recent result.

IV. ACCESS - CONT.

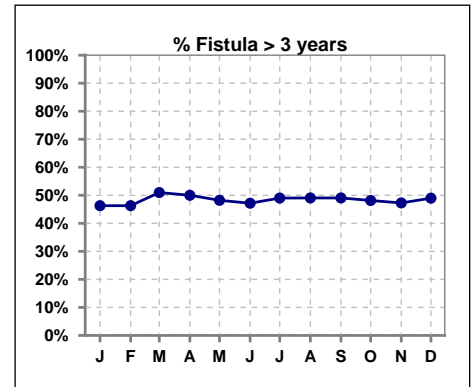
Catheters > 90 days

	Jan	Feb	Mar	Apr	May	Jun	Jul	Aug	Sep	Oct	Nov	Dec
# Access	86	86	82	81	79	77	73	74	75	76	77	75
# Catheters	14	14	14	15	11	10	10	8	9	10	10	9
% Catheters	16%	16%	17%	19%	14%	13%	14%	11%	12%	13%	13%	12%

Definition: Catheter in use on last treatment of the month



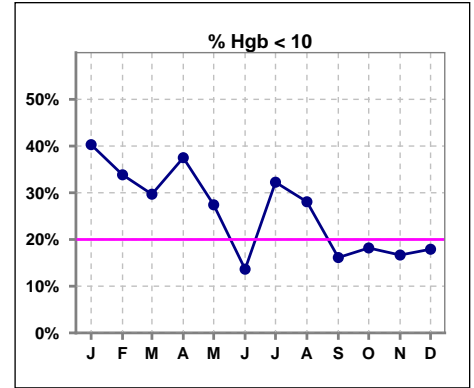
	Jan	Feb	Mar	Apr	May	Jun	Jul	Aug	Sep	Oct	Nov	Dec
# Fistula	54	54	51	52	56	53	51	53	53	54	55	49
# Fistula > 3 yrs	25	25	26	26	27	25	25	26	26	26	26	24
% Fistula > 3 yrs	46%	46%	51%	50%	48%	47%	49%	49%	49%	48%	47%	49%



V. ANEMIA

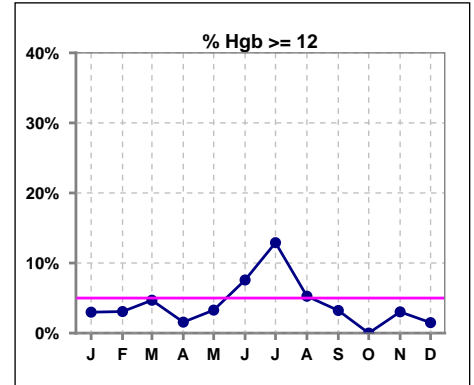
	Jan	Feb	Mar	Apr	May	Jun	Jul	Aug	Sep	Oct	Nov	Dec
# Hgb	67	65	64	64	62	66	62	57	62	66	66	67
# Hgb < 10	27	22	19	24	17	9	20	16	10	12	11	12
Pop. Mean	10.1	10.3	10.4	10.2	10.5	10.8	10.6	10.6	10.7	10.7	10.7	10.7
Std. Deviation	1.3	1.1	1.1	1.0	1.0	1.1	1.4	1.2	1.0	0.8	1.0	0.9
% Hgb < 10	40%	34%	30%	38%	27%	14%	32%	28%	16%	18%	17%	18%

Note: Excludes patients who received no ESA in month.



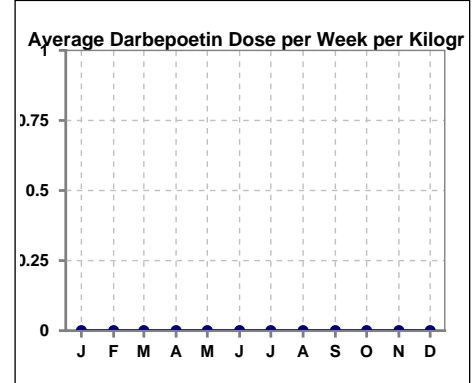
	Jan	Feb	Mar	Apr	May	Jun	Jul	Aug	Sep	Oct	Nov	Dec
# Hgb	67	65	64	64	61	66	62	57	62	66	66	67
# Hgb >= 12	2	2	3	1	2	5	8	3	2	0	2	1
Pop. Mean	10.1	10.3	10.4	10.2	10.5	10.8	10.6	10.6	10.7	10.7	10.7	10.7
Std. Deviation	1.3	1.1	1.1	1.0	1.0	1.1	1.4	1.2	1.0	0.8	1.0	0.9
% Hgb >= 12	3%	3%	5%	2%	3%	8%	13%	5%	3%	0%	3%	1%

Note: Excludes patients who received no ESA in month.



Average Darbepoetin Dose per Week per Kilogram

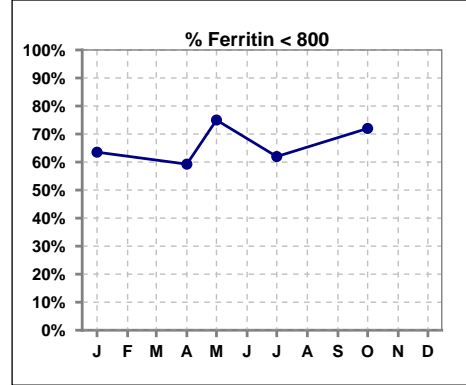
	Jan	Feb	Mar	Apr	May	Jun	Jul	Aug	Sep	Oct	Nov	Dec
# Average Darbepoetin	0	0	0	0	0	0	0	0	0	0	0	0



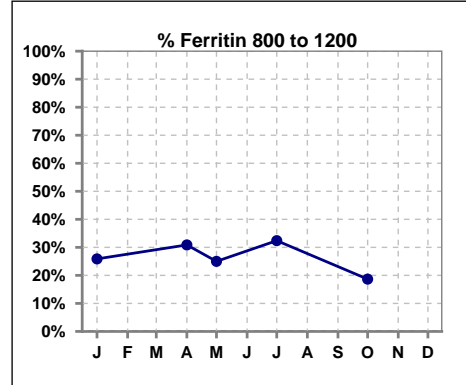
V. ANEMIA - CONT.

Iron Profile

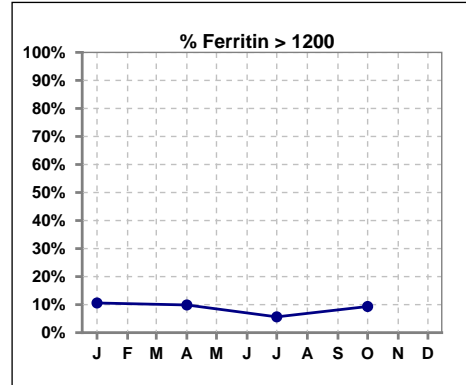
	Jan	Feb	Mar	Apr	May	Jun	Jul	Aug	Sep	Oct	Nov	Dec
# Ferritin	85			81	4		71			75		
# Ferritin < 800	54			48	3		44			54		
Pop. Mean	683			711	779		654			618		
Std. Deviation	357			423	147		356			361		
% Ferritin < 800	64%			59%	75%		62%			72%		



	Jan	Feb	Mar	Apr	May	Jun	Jul	Aug	Sep	Oct	Nov	Dec
# Ferritin	85			81	4		71			75		
# Ferritin 800 to 1200	22			25	1		23			14		
Pop. Mean	683			711	779		654			618		
Std. Deviation	357			423	147		356			361		
% Ferritin 800 to 1200	26%			31%	25%		32%			19%		

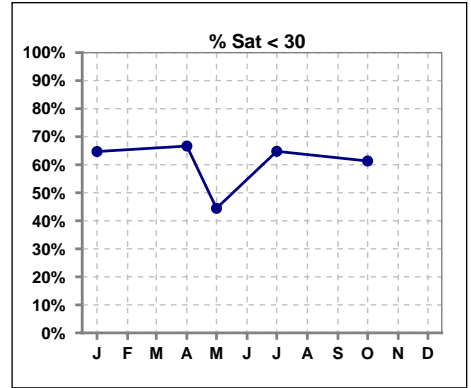


	Jan	Feb	Mar	Apr	May	Jun	Jul	Aug	Sep	Oct	Nov	Dec
# Ferritin	85			81	4		71			75		
# Ferritin > 1200	9			8			4			7		
Pop. Mean	683			711	779		654			618		
Std. Deviation	357			423	147		356			361		
% Ferritin > 1200	11%			10%			6%			9%		

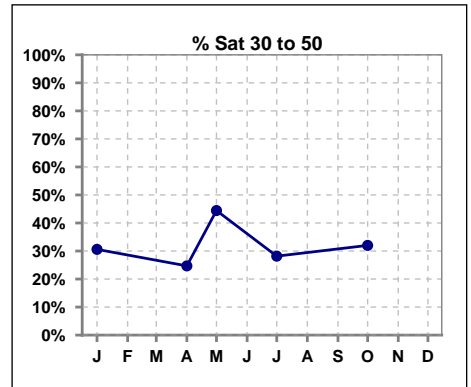


V. ANEMIA - CONT.

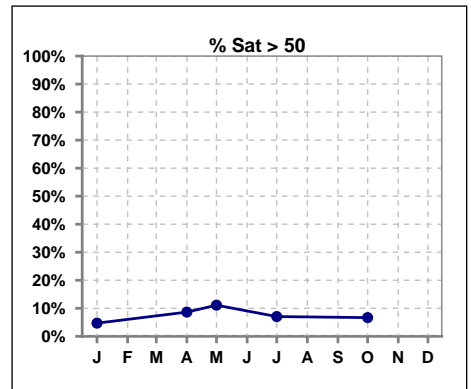
	Jan	Feb	Mar	Apr	May	Jun	Jul	Aug	Sep	Oct	Nov	Dec
# % Sat	85			81	9		71			75		
# % Sat < 30	55			54	4		46			46		
Pop. Mean	28			27	34		29			29		
Std. Deviation	12			12	14		14			14		
%% Sat < 30	65%			67%	44%		65%			61%		



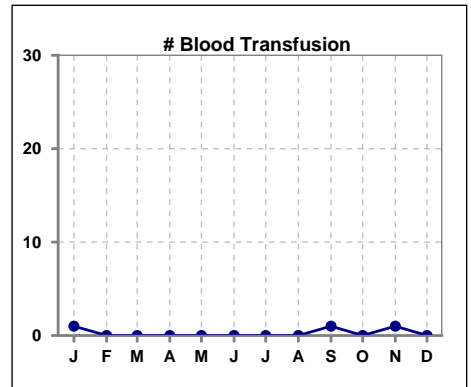
	Jan	Feb	Mar	Apr	May	Jun	Jul	Aug	Sep	Oct	Nov	Dec
# % Sat	85			81	9		71			75		
# % Sat 30 to 50	26			20	4		20			24		
Pop. Mean	28			27	34		29			29		
Std. Deviation	12			12	14		14			14		
%% Sat 30 to 50	31%			25%	44%		28%			32%		



	Jan	Feb	Mar	Apr	May	Jun	Jul	Aug	Sep	Oct	Nov	Dec
# % Sat	85			81	9		71			75		
# % Sat > 50	4			7	1		5			5		
Pop. Mean	28			27	34		29			29		
Std. Deviation	12			12	14		14			14		
%% Sat > 50	5%			9%	11%		7%			7%		



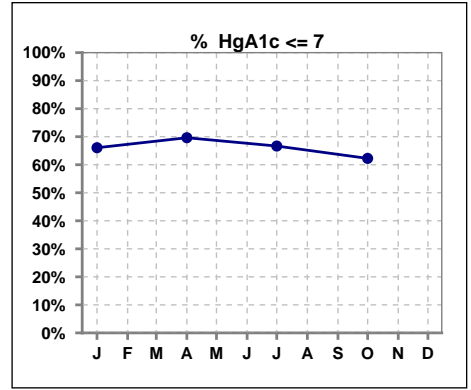
	Jan	Feb	Mar	Apr	May	Jun	Jul	Aug	Sep	Oct	Nov	Dec
# Patient	86	86	82	81	80	77	73	74	75	76	77	75
# Blood Transfusion	1	0	0	0	0	0	0	0	1	0	1	0



Methodology: a) All labs for 'Adequacy of Dialysis', 'Nutrition', 'Osteodystrophy', 'Anemia' and 'Diabetes' based on last value of month; b) BP's and #L processed are average of all values for month; c) Access data takes last access of month; d) Values for SGA and 'Infection Control' use most recent result.

VI. Diabetes

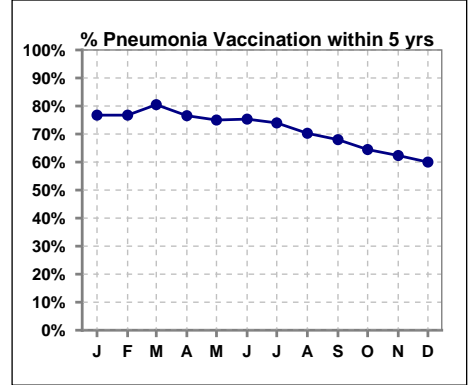
	Jan	Feb	Mar	Apr	May	Jun	Jul	Aug	Sep	Oct	Nov	Dec
# HgA1c	56			56			48			53		
# HgA1c <= 7	37			39			32			33		
Pop. Mean	6.8			6.5			6.7			6.8		
Std. Deviation	1.36			1.44			1.36			1.55		
% HgA1c <= 7	66%			70%			67%			62%		



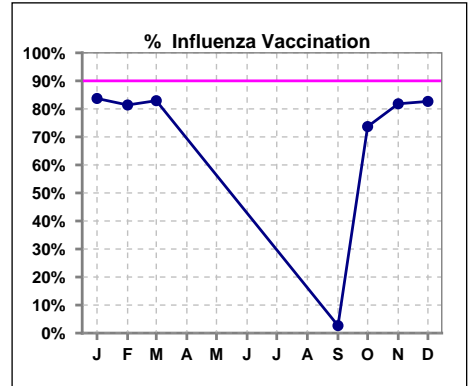
VII. Infection Control

Pneumonia vaccination within the past five years

	Jan	Feb	Mar	Apr	May	Jun	Jul	Aug	Sep	Oct	Nov	Dec
# Patient	86	86	82	81	80	77	73	74	75	76	77	75
# Pneumonia	66	66	66	62	60	58	54	52	51	49	48	45
% Pneumonia	77%	77%	80%	77%	75%	75%	74%	70%	68%	64%	62%	60%



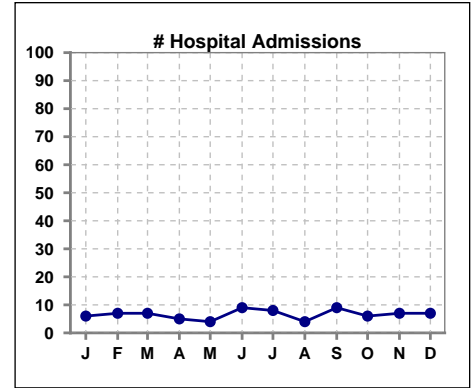
	Jan	Feb	Mar	Apr	May	Jun	Jul	Aug	Sep	Oct	Nov	Dec
# Patient	86	86	82						75	76	77	75
# Influenza	72	70	68						2	56	63	62
% Influenza	84%	81%	83%						3%	74%	82%	83%



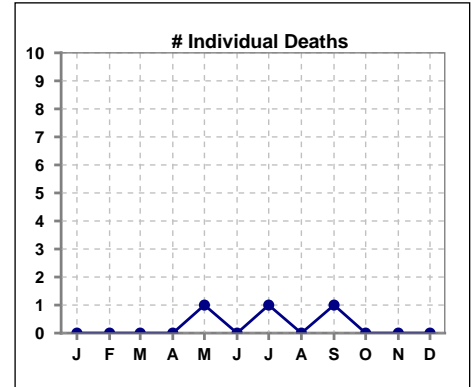
Methodology: a) All labs for 'Adequacy of Dialysis', 'Nutrition', 'Osteodystrophy', 'Anemia' and 'Diabetes' based on last value of month; b) BP's and #L processed are average of all values for month; c) Access data takes last access of month; d) Values for SGA and 'Infection Control' use most recent result.

VIII. Outcome measures

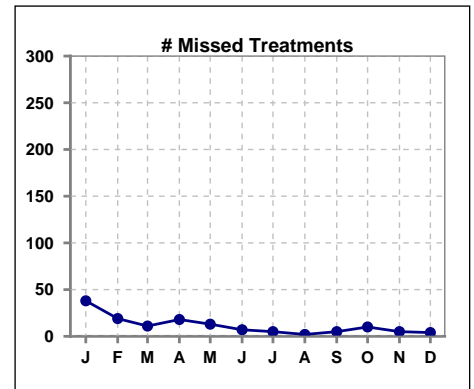
	Jan	Feb	Mar	Apr	May	Jun	Jul	Aug	Sep	Oct	Nov	Dec
# Patient	86	86	82	81	80	77	73	74	75	76	77	75
# Hospital Admissions	6	7	7	5	4	9	8	4	9	6	7	7



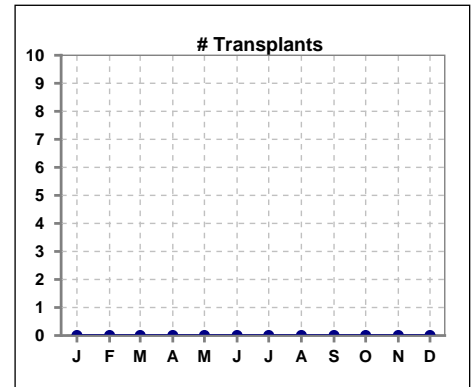
	Jan	Feb	Mar	Apr	May	Jun	Jul	Aug	Sep	Oct	Nov	Dec
# Patient	86	86	82	81	80	77	73	74	75	76	77	75
# Individual Deaths	0	0	0	0	1	0	1	0	1	0	0	0



	Jan	Feb	Mar	Apr	May	Jun	Jul	Aug	Sep	Oct	Nov	Dec
# Patient	86	86	82	81	80	77	73	74	75	76	77	75
# Missed Treatments	38	19	11	18	13	7	5	2	5	10	5	4



	Jan	Feb	Mar	Apr	May	Jun	Jul	Aug	Sep	Oct	Nov	Dec
# Patient	86	86	82	81	80	77	73	74	75	76	77	75
# Transplants	0	0	0	0	0	0	0	0	0	0	0	0



Methodology: a) All labs for 'Adequacy of Dialysis', 'Nutrition', 'Osteodystrophy', 'Anemia' and 'Diabetes' based on last value of month; b) BP's and #L processed are average of all values for month; c) Access data takes last access of month; d) Values for SGA and 'Infection Control' use most recent result.