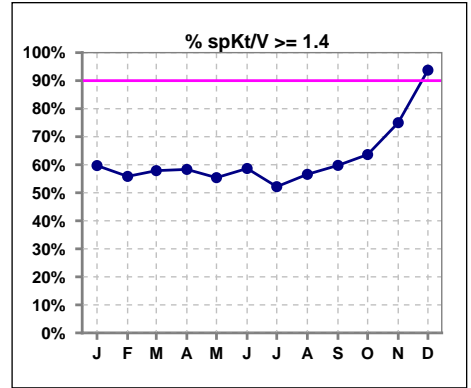
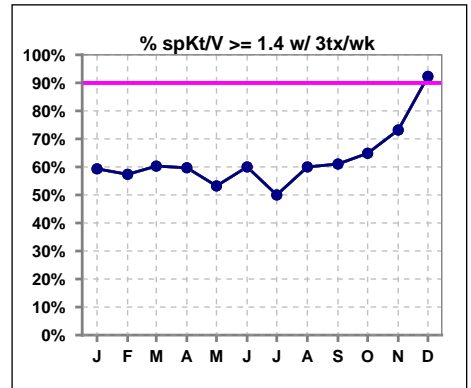


I. ADEQUACY OF DIALYSIS

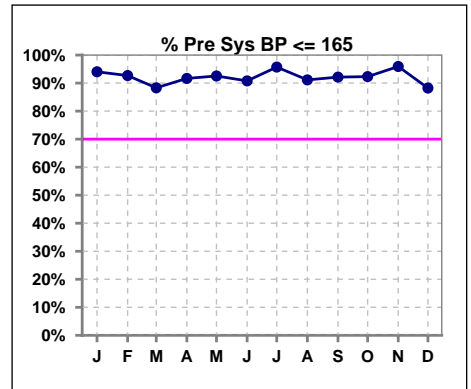
	Jan	Feb	Mar	Apr	May	Jun	Jul	Aug	Sep	Oct	Nov	Dec
# spKt/V	67	77	76	72	65	75	69	76	87	88	48	16
# spKt/V >= 1.4	40	43	44	42	36	44	36	43	52	56	36	15
Pop. Mean	1.48	1.50	1.55	1.52	1.53	1.51	1.49	1.48	1.48	1.57	1.59	1.61
Std. Deviation	0.32	0.35	0.39	0.38	0.43	0.50	0.33	0.36	0.38	0.36	0.35	0.26
% spKt/V >= 1.4	60%	56%	58%	58%	55%	59%	52%	57%	60%	64%	75%	94%
% spKt/V >= 1.2	84%	90%	87%	86%	86%	85%	87%	83%	80%	92%	88%	94%



	Jan	Feb	Mar	Apr	May	Jun	Jul	Aug	Sep	Oct	Nov	Dec
# spKt/V w/ 3tx/wk	59	68	68	67	62	70	64	65	77	74	41	13
# spKt/V >= 1.4 w/3tx/wk	35	39	41	40	33	42	32	39	47	48	30	12
Pop. Mean	1.48	1.52	1.57	1.53	1.55	1.52	1.49	1.48	1.47	1.56	1.61	1.62
Std. Deviation	0.33	0.35	0.40	0.38	0.43	0.52	0.34	0.34	0.37	0.37	0.37	0.28
% spKt/V >= 1.4 w/3tx/wk	59%	57%	60%	60%	53%	60%	50%	60%	61%	65%	73%	92%



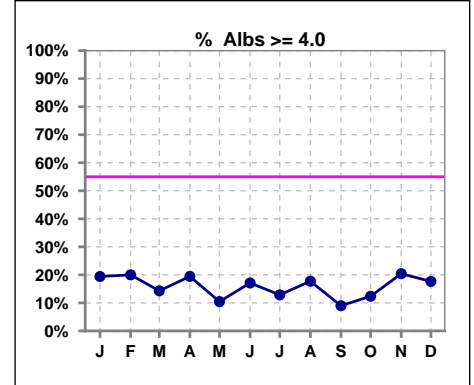
	Jan	Feb	Mar	Apr	May	Jun	Jul	Aug	Sep	Oct	Nov	Dec
# Pre Sys BP	67	82	77	72	67	76	70	79	89	91	49	17
# Pre Sys BP <= 165	63	76	69	67	62	69	68	72	83	84	47	15
Pop. Mean	140	139	141	139	139	139	137	136	140	141	142	150
Std. Deviation	18.8	17.9	19.3	20.5	19.7	18.4	17.7	20.7	18.2	17.9	17.1	15.9
% Pre Sys BP <= 165	94%	93%	88%	92%	93%	91%	96%	91%	92%	92%	96%	88%



*Albumin values use BCG method - as of July 2001

II. NUTRITION

	Jan	Feb	Mar	Apr	May	Jun	Jul	Aug	Sep	Oct	Nov	Dec
# Albumin	67	80	77	72	67	76	70	79	89	89	49	17
# Albumin >= 4.0	13	16	11	14	7	13	9	14	8	11	10	3
Pop. Mean	3.5	3.5	3.5	3.5	3.5	3.5	3.5	3.4	3.4	3.5	3.6	3.6
Std. Deviation	0.47	0.52	0.48	0.51	0.52	0.58	0.51	0.55	0.48	0.44	0.52	0.48
% Alb >= 4.0	19%	20%	14%	19%	10%	17%	13%	18%	9%	12%	20%	18%

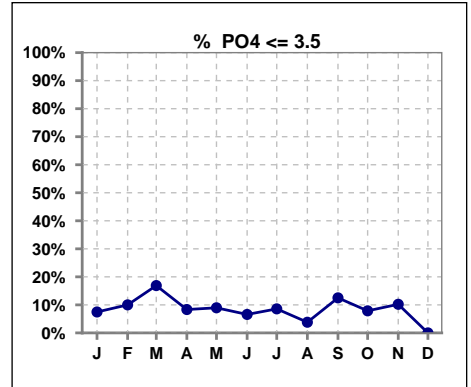


Methodology: a) All labs for 'Adequacy of Dialysis', 'Nutrition', 'Osteodystrophy', 'Anemia' and 'Diabetes' based on last value of month; b) BP's and #L processed are average of all values for month; c) Access data takes last access of month; d) Values for SGA and 'Infection Control' use most recent result.

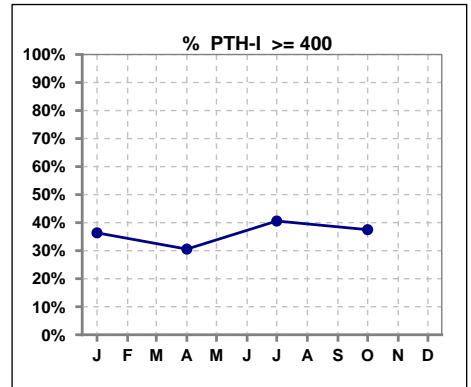
Lab methodology for PTH changed January 2012

III. OSTEODYSTROPHY

	Jan	Feb	Mar	Apr	May	Jun	Jul	Aug	Sep	Oct	Nov	Dec
# PO4	67	80	77	72	67	76	70	79	88	89	49	17
# PO4 <= 3.5	5	8	13	6	6	5	6	3	11	7	5	0
Pop. Mean	6.0	5.6	5.9	5.8	5.3	5.6	5.6	6.1	5.3	5.8	5.7	5.5
Std. Deviation	1.93	1.92	2.30	1.89	1.99	1.76	1.69	1.78	1.73	1.75	1.89	1.81
% PO4 <= 3.5	7%	10%	17%	8%	9%	7%	9%	4%	13%	8%	10%	0%



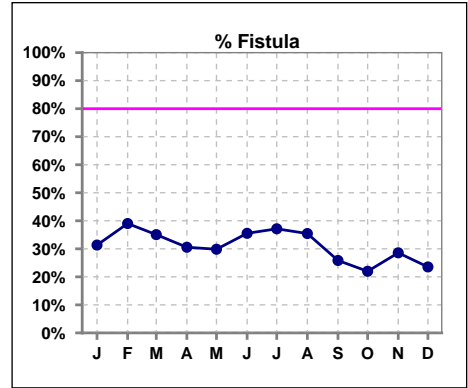
	Jan	Feb	Mar	Apr	May	Jun	Jul	Aug	Sep	Oct	Nov	Dec
# PTH-I	66			72			69			88		
# PTH-I >= 400	24			22			28			33		
Pop. Mean	425			374			375			417		
Std. Deviation	322			318			241			395		
% PTH-I >= 400	36%			31%			41%			38%		



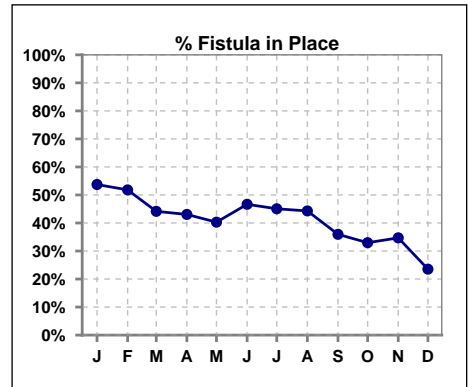
Methodology: a) All labs for 'Adequacy of Dialysis', 'Nutrition', 'Osteodystrophy', 'Anemia' and 'Diabetes' based on last value of month; b) BP's and #L processed are average of all values for month; c) Access data takes last access of month; d) Values for SGA and 'Infection Control' use most recent result.

IV. ACCESS

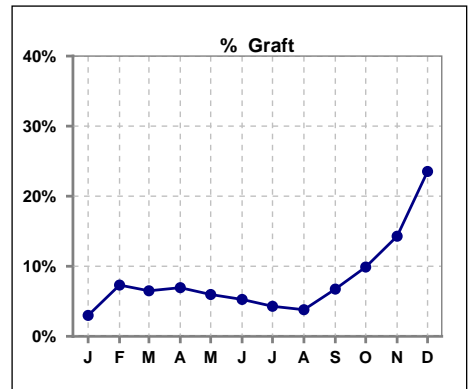
	Jan	Feb	Mar	Apr	May	Jun	Jul	Aug	Sep	Oct	Nov	Dec
# Access	67	82	77	72	67	76	70	79	89	91	49	17
# Fistula	21	32	27	22	20	27	26	28	23	20	14	4
% Fistula	31%	39%	35%	31%	30%	36%	37%	35%	26%	22%	29%	24%



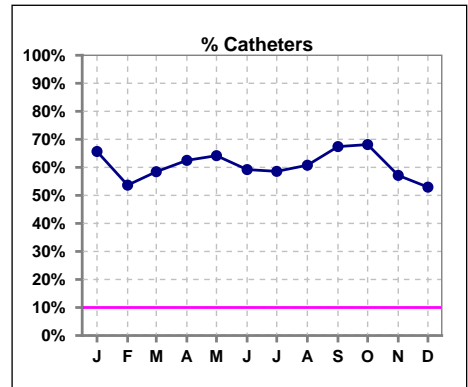
	Jan	Feb	Mar	Apr	May	Jun	Jul	Aug	Sep	Oct	Nov	Dec
# Patient	67	83	77	72	67	75	71	79	89	91	49	17
# Fistula in Place	36	43	34	31	27	35	32	35	32	30	17	4
% Fistula in Place	54%	52%	44%	43%	40%	47%	45%	44%	36%	33%	35%	24%



	Jan	Feb	Mar	Apr	May	Jun	Jul	Aug	Sep	Oct	Nov	Dec
# Access	67	82	77	72	67	76	70	79	89	91	49	17
# Graft	2	6	5	5	4	4	3	3	6	9	7	4
% Graft	3%	7%	6%	7%	6%	5%	4%	4%	7%	10%	14%	24%



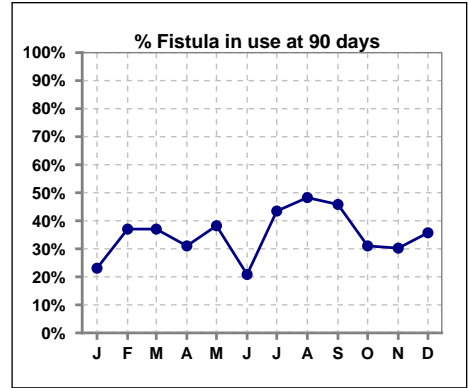
	Jan	Feb	Mar	Apr	May	Jun	Jul	Aug	Sep	Oct	Nov	Dec
# Access	67	82	77	72	67	76	70	79	89	91	49	17
# Catheters	44	44	45	45	43	45	41	48	60	62	28	9
% Catheters	66%	54%	58%	63%	64%	59%	59%	61%	67%	68%	57%	53%



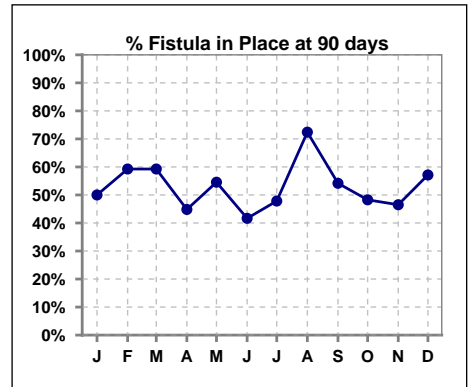
Methodology: a) All labs for 'Adequacy of Dialysis', 'Nutrition', 'Osteodystrophy', 'Anemia' and 'Diabetes' based on last value of month; b) BP's and #L processed are average of all values for month; c) Access data takes last access of month; d) Values for SGA and 'Infection Control' use most recent result.

IV. ACCESS - CONT. Access at 90 days for those patients that reached 90 days within the month.

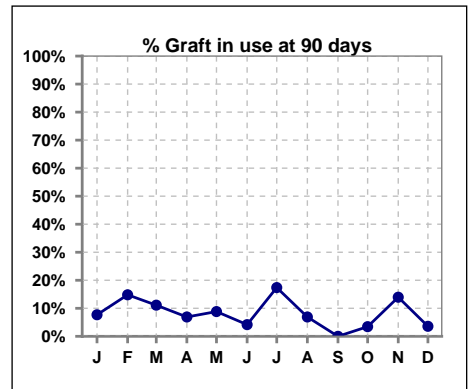
	Jan	Feb	Mar	Apr	May	Jun	Jul	Aug	Sep	Oct	Nov	Dec
# Patient	26	27	27	29	34	24	23	29	24	29	43	28
# Fistula in use	6	10	10	9	13	5	10	14	11	9	13	10
% Fistula in use	23%	37%	37%	31%	38%	21%	43%	48%	46%	31%	30%	36%



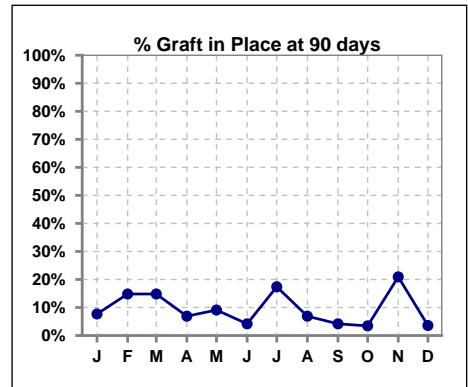
	Jan	Feb	Mar	Apr	May	Jun	Jul	Aug	Sep	Oct	Nov	Dec
# Patient	26	27	27	29	33	24	23	29	24	29	43	28
# Fistula in Place	13	16	16	13	18	10	11	21	13	14	20	16
% Fistula in Place	50%	59%	59%	45%	55%	42%	48%	72%	54%	48%	47%	57%



	Jan	Feb	Mar	Apr	May	Jun	Jul	Aug	Sep	Oct	Nov	Dec
# Patient	26	27	27	29	34	24	23	29	24	29	43	28
# Graft in use	2	4	3	2	3	1	4	2	0	1	6	1
% Graft in use	8%	15%	11%	7%	9%	4%	17%	7%	0%	3%	14%	4%



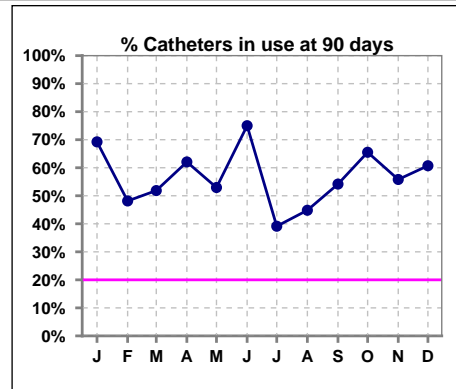
	Jan	Feb	Mar	Apr	May	Jun	Jul	Aug	Sep	Oct	Nov	Dec
# Patient	26	27	27	29	33	24	23	29	24	29	43	28
# Graft in Place	2	4	4	2	3	1	4	2	1	1	9	1
% Graft in Place	8%	15%	15%	7%	9%	4%	17%	7%	4%	3%	21%	4%



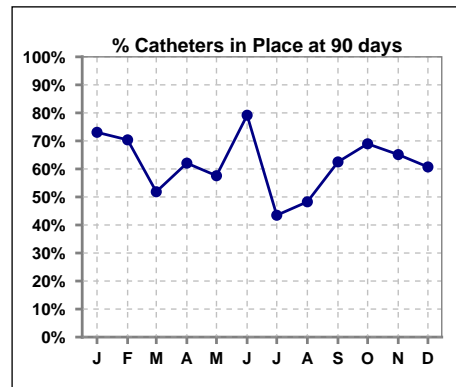
Methodology: a) All labs for 'Adequacy of Dialysis', 'Nutrition', 'Osteodystrophy', 'Anemia' and 'Diabetes' based on last value of month; b) BP's and #L processed are average of all values for month; c) Access data takes last access of month; d) Values for SGA and 'Infection Control' use most recent result.

IV. ACCESS - CONT. Access at 90 days for those patients that reached 90 days within the month.

	Jan	Feb	Mar	Apr	May	Jun	Jul	Aug	Sep	Oct	Nov	Dec
# Patient	26	27	27	29	34	24	23	29	24	29	43	28
# Catheters in use	18	13	14	18	18	18	9	13	13	19	24	17
% Catheters in use	69%	48%	52%	62%	53%	75%	39%	45%	54%	66%	56%	61%

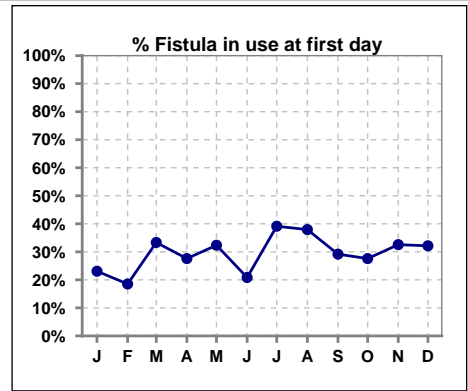


	Jan	Feb	Mar	Apr	May	Jun	Jul	Aug	Sep	Oct	Nov	Dec
# Patient	26	27	27	29	33	24	23	29	24	29	43	28
# Catheters in Place	19	19	14	18	19	19	10	14	15	20	28	17
% Catheters in Place	73%	70%	52%	62%	58%	79%	43%	48%	63%	69%	65%	61%

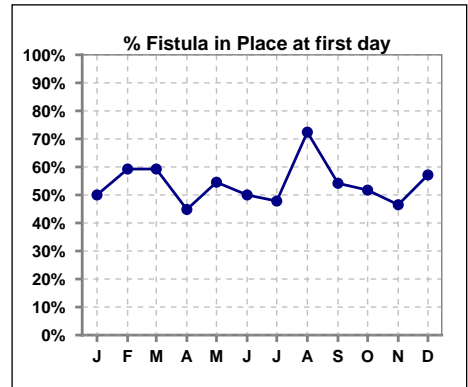


IV. ACCESS - CONT. Access at first day for those patients that reached 90 days within the month.

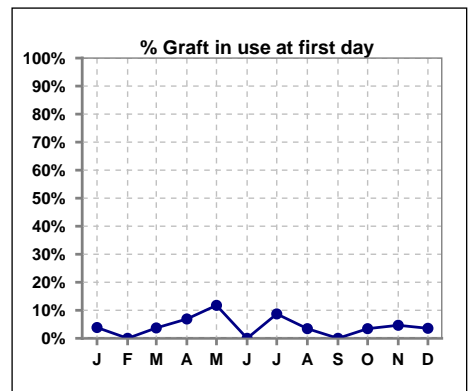
	Jan	Feb	Mar	Apr	May	Jun	Jul	Aug	Sep	Oct	Nov	Dec
# Patient	26	27	27	29	34	24	23	29	24	29	43	28
# Fistula in use	6	5	9	8	11	5	9	11	7	8	14	9
% Fistula in use	23%	19%	33%	28%	32%	21%	39%	38%	29%	28%	33%	32%



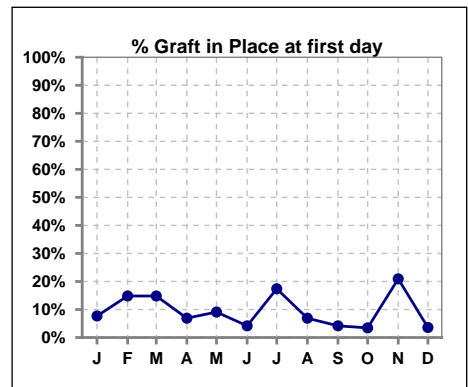
	Jan	Feb	Mar	Apr	May	Jun	Jul	Aug	Sep	Oct	Nov	Dec
# Patient	26	27	27	29	33	24	23	29	24	29	43	28
# Fistula in Place	13	16	16	13	18	12	11	21	13	15	20	16
% Fistula in Place	50%	59%	59%	45%	55%	50%	48%	72%	54%	52%	47%	57%



	Jan	Feb	Mar	Apr	May	Jun	Jul	Aug	Sep	Oct	Nov	Dec
# Patient	26	27	27	29	34	24	23	29	24	29	43	28
# Graft in use	1	0	1	2	4	0	2	1	0	1	2	1
% Graft in use	4%	0%	4%	7%	12%	0%	9%	3%	0%	3%	5%	4%



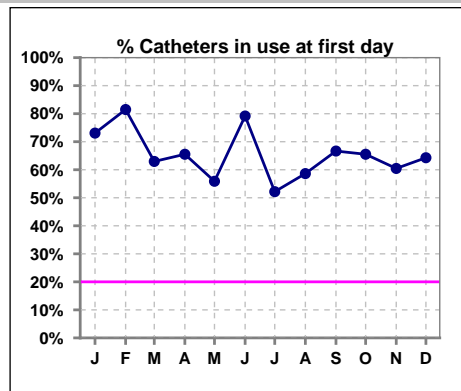
	Jan	Feb	Mar	Apr	May	Jun	Jul	Aug	Sep	Oct	Nov	Dec
# Patient	26	27	27	29	33	24	23	29	24	29	43	28
# Graft in Place	2	4	4	2	3	1	4	2	1	1	9	1
% Graft in Place	8%	15%	15%	7%	9%	4%	17%	7%	4%	3%	21%	4%



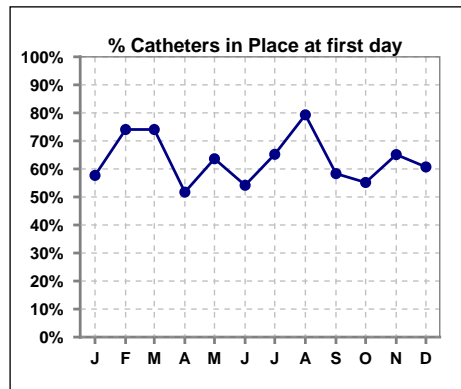
Methodology: a) All labs for 'Adequacy of Dialysis', 'Nutrition', 'Osteodystrophy', 'Anemia' and 'Diabetes' based on last value of month; b) BP's and #L processed are average of all values for month; c) Access data takes last access of month; d) Values for SGA and 'Infection Control' use most recent result.

IV. ACCESS - CONT. Access at first day for those patients that reached 90 days within the month.

	Jan	Feb	Mar	Apr	May	Jun	Jul	Aug	Sep	Oct	Nov	Dec
# Patient	26	27	27	29	34	24	23	29	24	29	43	28
# Catheters in use	19	22	17	19	19	19	12	17	16	19	26	18
% Catheters in use	73%	81%	63%	66%	56%	79%	52%	59%	67%	66%	60%	64%



	Jan	Feb	Mar	Apr	May	Jun	Jul	Aug	Sep	Oct	Nov	Dec
# Patient	26	27	27	29	33	24	23	29	24	29	43	28
# Catheters in Place	15	20	20	15	21	13	15	23	14	16	28	17
% Catheters in Place	58%	74%	74%	52%	64%	54%	65%	79%	58%	55%	65%	61%

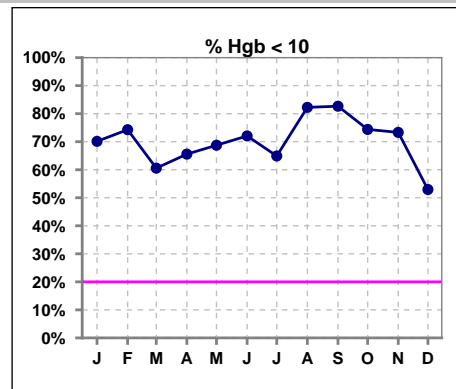


Methodology: a) All labs for 'Adequacy of Dialysis', 'Nutrition', 'Osteodystrophy', 'Anemia' and 'Diabetes' based on last value of month; b) BP's and #L processed are average of all values for month; c) Access data takes last access of month; d) Values for SGA and 'Infection Control' use most recent result.

V. ANEMIA

	Jan	Feb	Mar	Apr	May	Jun	Jul	Aug	Sep	Oct	Nov	Dec
# Hgb	77	70	71	61	64	68	57	62	75	82	45	17
# Hgb <= 10	54	52	43	40	44	49	37	51	62	61	33	9
Pop. Mean	9.3	9.3	9.7	9.4	9.5	9.4	9.6	9.1	8.9	9.3	9.2	10.1
Std. Deviation	1.4	1.1	1.3	1.5	1.4	1.2	1.2	1.6	1.2	1.3	1.4	1.1
% Hgb <= 10	70%	74%	61%	66%	69%	72%	65%	82%	83%	74%	73%	53%

Note: Excludes patients who received no ESA in month.



	Jan	Feb	Mar	Apr	May	Jun	Jul	Aug	Sep	Oct	Nov	Dec
# Hgb	61	69	67	61	59	68	57	62	75	82	45	17
# Hgb >= 12	2	0	2	3	2	0	2	2	0	1	1	1
Pop. Mean	9.4	9.3	9.8	9.4	9.5	9.4	9.6	9.1	8.9	9.3	9.2	10.1
Std. Deviation	1.5	1.1	1.3	1.5	1.4	1.2	1.2	1.6	1.2	1.3	1.4	1.1
% Hgb >= 12	3%	0%	3%	5%	3%	0%	4%	3%	0%	1%	2%	6%

Note: Excludes patients who received no ESA in month.

