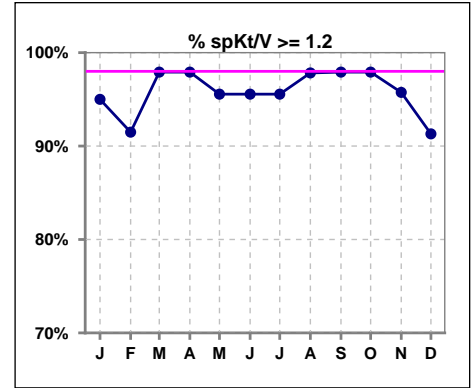
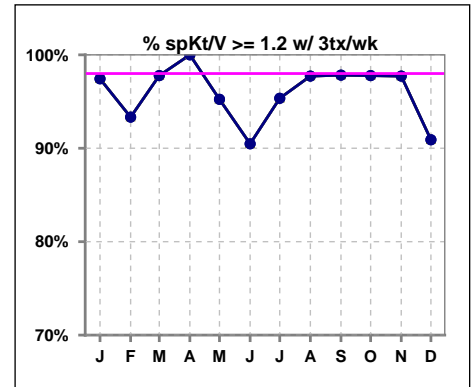


I. ADEQUACY OF DIALYSIS

	Jan	Feb	Mar	Apr	May	Jun	Jul	Aug	Sep	Oct	Nov	Dec
# spKt/V	40	47	48	48	45	45	45	46	48	48	47	46
# spKt/V >= 1.2	38	43	47	47	43	43	43	45	47	47	45	42
Pop. Mean	1.56	1.55	1.58	1.59	1.54	1.58	1.57	1.55	1.54	1.57	1.59	1.56
Std. Deviation	0.30	0.28	0.28	0.28	0.29	0.29	0.31	0.29	0.25	0.24	0.28	0.34
% spKt/V >= 1.2	95%	91%	98%	98%	96%	96%	96%	98%	98%	98%	96%	91%

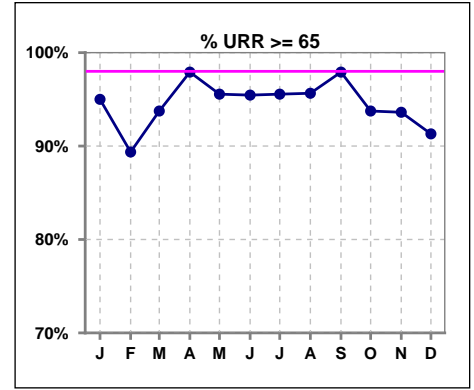


	Jan	Feb	Mar	Apr	May	Jun	Jul	Aug	Sep	Oct	Nov	Dec
# spKt/V w/ 3tx/wk	39	45	45	43	42	42	43	44	46	45	44	44
# spKt/V >= 1.2 w/3tx/wk	38	42	44	43	40	38	41	43	45	44	43	40
Pop. Mean	1.57	1.57	1.59	1.61	1.55	1.59	1.58	1.55	1.55	1.57	1.61	1.57
Std. Deviation	0.29	0.27	0.29	0.27	0.29	0.29	0.31	0.29	0.25	0.24	0.27	0.35
% >= 1.2 w/3tx/wk	97%	93%	98%	100%	95%	90%	95%	98%	98%	98%	98%	91%

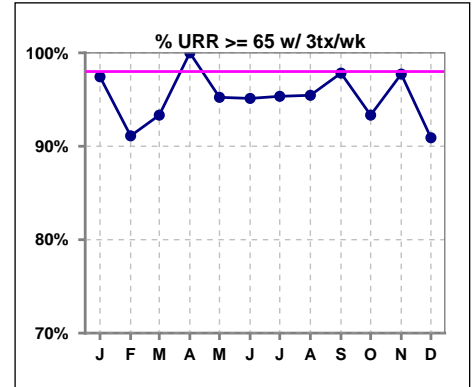


I. ADEQUACY OF DIALYSIS - CONT.

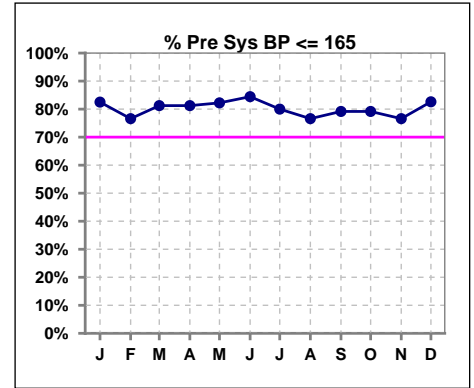
	Jan	Feb	Mar	Apr	May	Jun	Jul	Aug	Sep	Oct	Nov	Dec
# URR	40	47	48	48	45	44	45	46	48	48	47	46
# URR >= 65	38	42	45	47	43	42	43	44	47	45	44	42
Pop. Mean	73	74	74	74	73	74	74	73	73	74	74	73
Std. Deviation	5.92	6.05	5.83	5.53	6.07	5.90	6.28	6.67	5.82	6.02	5.53	8.05
% URR >= 65	95%	89%	94%	98%	96%	95%	96%	96%	98%	94%	94%	91%



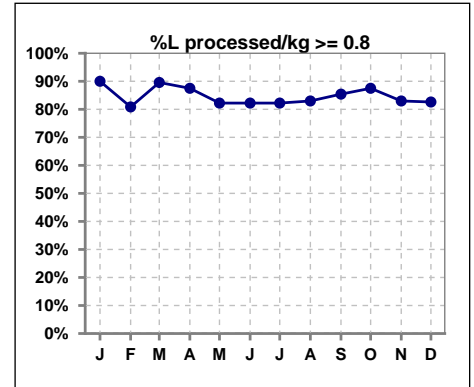
	Jan	Feb	Mar	Apr	May	Jun	Jul	Aug	Sep	Oct	Nov	Dec
# URR w/ 3tx/wk	39	45	45	43	42	41	43	44	46	45	44	44
# URR>=65 w/ 3tx/wk	38	41	42	43	40	39	41	42	45	42	43	40
Pop. Mean	74	74	74	75	73	75	74	73	73	74	75	73
Std. Deviation	5.58	5.74	5.94	5.20	6.16	6.04	6.31	6.77	5.93	6.07	5.13	8.23
% URR>=65 w/ 3tx/wk	97%	91%	93%	100%	95%	95%	95%	95%	98%	93%	98%	91%



	Jan	Feb	Mar	Apr	May	Jun	Jul	Aug	Sep	Oct	Nov	Dec
# Pre Sys BP	40	47	48	48	45	45	45	47	48	48	47	46
# Pre Sys BP <= 165	33	36	40	40	37	38	36	38	39	40	36	38
Pop. Mean	146	146	146	147	147	146	145	145	144	146	146	144
Std. Deviation	20.7	22.4	19.8	21.1	21.1	21.8	21.6	22.1	22.5	23.8	22.9	22.6
% Pre Sys BP <=165	83%	77%	81%	81%	82%	84%	80%	77%	79%	79%	77%	83%



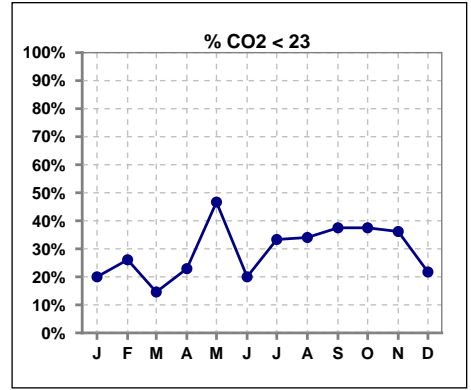
	Jan	Feb	Mar	Apr	May	Jun	Jul	Aug	Sep	Oct	Nov	Dec
# L processed/kg	40	47	48	48	45	45	45	47	48	48	47	46
# L processed/kg>=0.8	36	38	43	42	37	37	37	39	41	42	39	38
Pop. Mean	1	1	1	1	1	1	1	1	1	1	1	1
Std. Deviation	0.2	0.2	0.2	0.2	0.2	0.2	0.2	0.2	0.2	0.2	0.3	0.3
% L processed/kg>=0.8	90%	81%	90%	88%	82%	82%	82%	83%	85%	88%	83%	83%



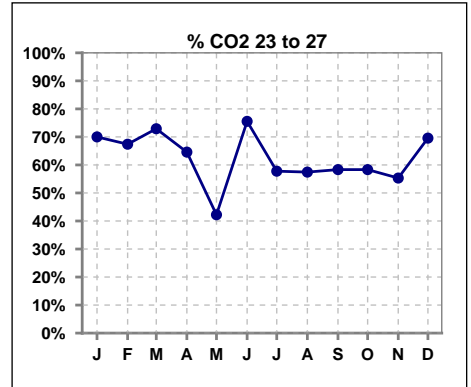
Methodology: a) All labs for 'Adequacy of Dialysis', 'Nutrition', 'Osteodystrophy', 'Anemia' and 'Diabetes' based on last value of month; b) BP's and #L processed are average of all values for month; c) Access data takes last access of month; d) Values for SGA and 'Infection Control' use most recent result.

I. ADEQUACY OF DIALYSIS - CONT.

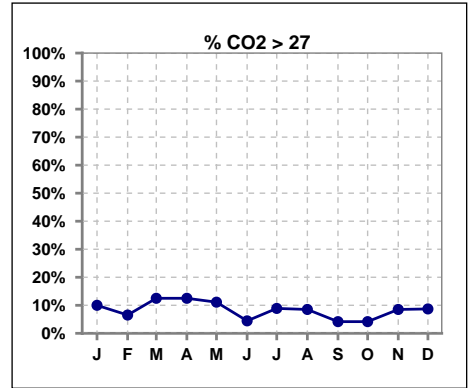
	Jan	Feb	Mar	Apr	May	Jun	Jul	Aug	Sep	Oct	Nov	Dec
# CO2	40	46	48	48	45	45	45	47	48	48	47	46
# CO2 < 23	8	12	7	11	21	9	15	16	18	18	17	10
Pop. Mean	25	24	25	24	23	24	24	24	23	24	24	25
Std. Deviation	2.49	2.66	2.67	2.63	3.63	2.37	2.79	2.99	2.33	2.60	2.60	3.78
% CO2 < 23	20%	26%	15%	23%	47%	20%	33%	34%	38%	38%	36%	22%



	Jan	Feb	Mar	Apr	May	Jun	Jul	Aug	Sep	Oct	Nov	Dec
# CO2	40	46	48	48	45	45	45	47	48	48	47	46
# CO2 23 to 27	28	31	35	31	19	34	26	27	28	28	26	32
Pop. Mean	25	24	25	24	23	24	24	24	23	24	24	25
Std. Deviation	2.49	2.66	2.67	2.63	3.63	2.37	2.79	2.99	2.33	2.60	2.60	3.78
% CO2 23 to 27	70%	67%	73%	65%	42%	76%	58%	57%	58%	58%	55%	70%



	Jan	Feb	Mar	Apr	May	Jun	Jul	Aug	Sep	Oct	Nov	Dec
# CO2	40	46	48	48	45	45	45	47	48	48	47	46
# CO2 > 27	4	3	6	6	5	2	4	4	2	2	4	4
Pop. Mean	25	24	25	24	23	24	24	24	23	24	24	25
Std. Deviation	2.49	2.66	2.67	2.63	3.63	2.37	2.79	2.99	2.33	2.60	2.60	3.78
% CO2 > 27	10%	7%	13%	13%	11%	4%	9%	9%	4%	4%	9%	9%

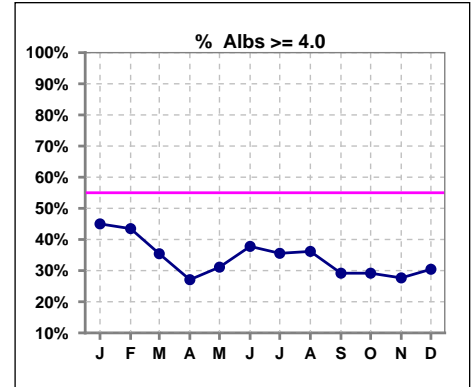


Methodology: a) All labs for 'Adequacy of Dialysis', 'Nutrition', 'Osteodystrophy', 'Anemia' and 'Diabetes' based on last value of month; b) BP's and #L processed are average of all values for month; c) Access data takes last access of month; d) Values for SGA and 'Infection Control' use most recent result.

*Albumin values use BCG method - as of July 2001

II. NUTRITION

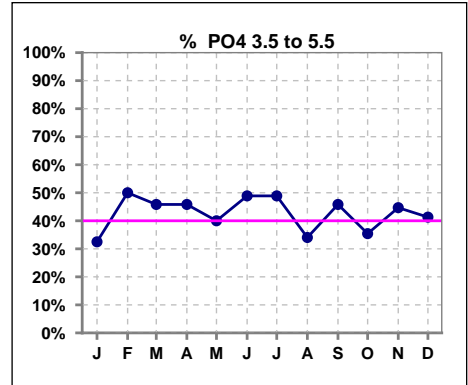
	Jan	Feb	Mar	Apr	May	Jun	Jul	Aug	Sep	Oct	Nov	Dec
# Albumin	40	46	48	48	45	45	45	47	48	48	47	46
# Albumin >= 4.0	18	20	17	13	14	17	16	17	14	14	13	14
Pop. Mean	3.8	3.8	3.7	3.7	3.7	3.8	3.7	3.7	3.6	3.7	3.7	3.7
Std. Deviation	0.36	0.40	0.38	0.37	0.42	0.41	0.39	0.46	0.44	0.39	0.50	0.48
% Alb >= 4.0	45%	43%	35%	27%	31%	38%	36%	36%	29%	29%	28%	30%



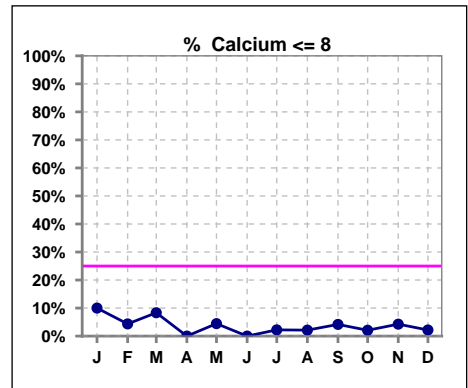
Lab methodology for PTH changed January 2012

III. OSTEODYSTROPHY

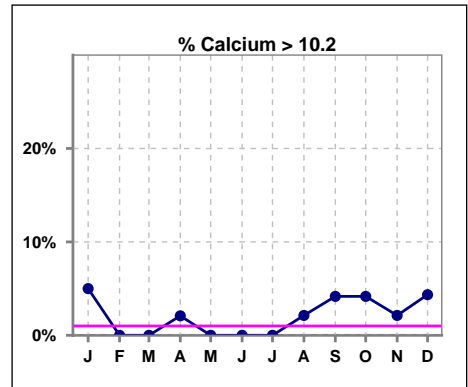
	Jan	Feb	Mar	Apr	May	Jun	Jul	Aug	Sep	Oct	Nov	Dec
# PO4	40	46	48	48	45	45	45	47	48	48	47	46
# PO4 3.5 to 5.5	13	23	22	22	18	22	22	16	22	17	21	19
Pop. Mean	6.2	5.6	5.4	5.4	5.7	5.8	5.8	5.7	5.6	5.4	5.4	5.7
Std. Deviation	1.61	1.94	1.50	1.66	1.81	2.00	1.80	2.19	1.99	1.88	1.87	1.62
% PO4 3.5 to 5.5	33%	50%	46%	46%	40%	49%	49%	34%	46%	35%	45%	41%



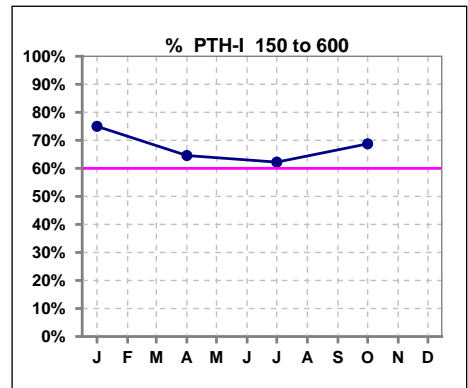
	Jan	Feb	Mar	Apr	May	Jun	Jul	Aug	Sep	Oct	Nov	Dec
# Calcium	40	46	48	48	45	45	45	47	48	48	47	46
# Calcium <= 8	4	2	4	0	2	0	1	1	2	1	2	1
Pop. Mean	9.2	9.1	9.1	9.2	9.1	9.3	9.2	9.2	9.2	9.2	9.1	9.2
Std. Deviation	0.73	0.56	0.65	0.49	0.62	0.53	0.47	0.58	0.74	0.61	0.68	0.64
% Calcium <= 8	10%	4%	8%	0%	4%	0%	2%	2%	4%	2%	4%	2%



	Jan	Feb	Mar	Apr	May	Jun	Jul	Aug	Sep	Oct	Nov	Dec
# Calcium	40	46	48	48	45	45	45	47	48	48	47	46
# Calcium > 10.2	2	0	0	1	0	0	0	1	2	2	1	2
Pop. Mean	9.2	9.1	9.1	9.2	9.1	9.3	9.2	9.2	9.2	9.2	9.1	9.2
Std. Deviation	0.73	0.56	0.65	0.49	0.62	0.53	0.47	0.58	0.74	0.61	0.68	0.64
% Calcium > 10.2	5%	0%	0%	2%	0%	0%	0%	2%	4%	4%	2%	4%



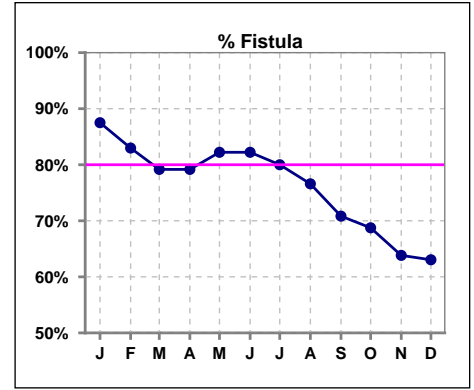
	Jan	Feb	Mar	Apr	May	Jun	Jul	Aug	Sep	Oct	Nov	Dec
# PTH-I	40			48			45			48		
# PTH-I 150 to 600	30			31			28			33		
Pop. Mean	425			349			354			383		
Std. Deviation	259			276			289			387		
% PTH-I 150 to 600	75%			65%			62%			69%		



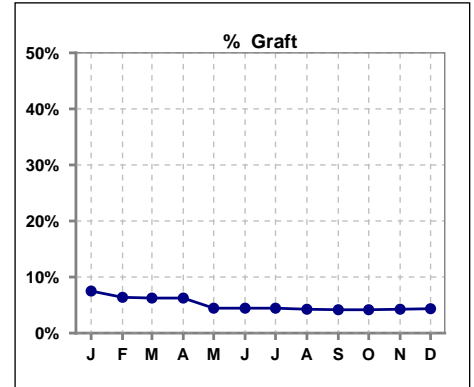
Methodology: a) All labs for 'Adequacy of Dialysis', 'Nutrition', 'Osteodystrophy', 'Anemia' and 'Diabetes' based on last value of month; b) BP's and #L processed are average of all values for month; c) Access data takes last access of month; d) Values for SGA and 'Infection Control' use most recent result.

IV. ACCESS

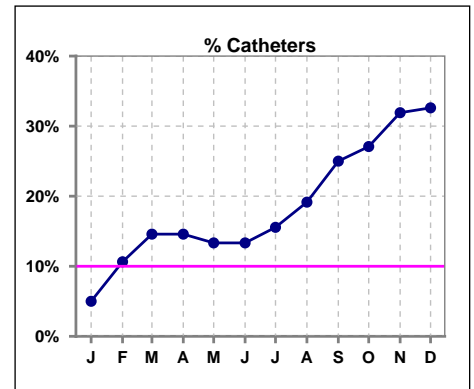
	Jan	Feb	Mar	Apr	May	Jun	Jul	Aug	Sep	Oct	Nov	Dec
# Access	40	47	48	48	45	45	45	47	48	48	47	46
# Fistula	35	39	38	38	37	37	36	36	34	33	30	29
% Fistula	88%	83%	79%	79%	82%	82%	80%	77%	71%	69%	64%	63%



	Jan	Feb	Mar	Apr	May	Jun	Jul	Aug	Sep	Oct	Nov	Dec
# Access	40	47	48	48	45	45	45	47	48	48	47	46
# Graft	3	3	3	3	2	2	2	2	2	2	2	2
% Graft	8%	6%	6%	6%	4%	4%	4%	4%	4%	4%	4%	4%



	Jan	Feb	Mar	Apr	May	Jun	Jul	Aug	Sep	Oct	Nov	Dec
# Access	40	47	48	48	45	45	45	47	48	48	47	46
# Catheters	2	5	7	7	6	6	7	9	12	13	15	15
% Catheters	5%	11%	15%	15%	13%	13%	16%	19%	25%	27%	32%	33%



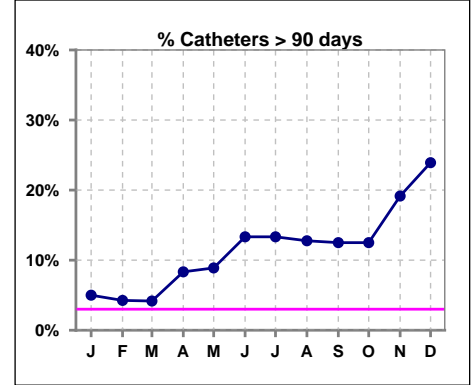
Methodology: a) All labs for 'Adequacy of Dialysis', 'Nutrition', 'Osteodystrophy', 'Anemia' and 'Diabetes' based on last value of month; b) BP's and #L processed are average of all values for month; c) Access data takes last access of month; d) Values for SGA and 'Infection Control' use most recent result.

IV. ACCESS - CONT.

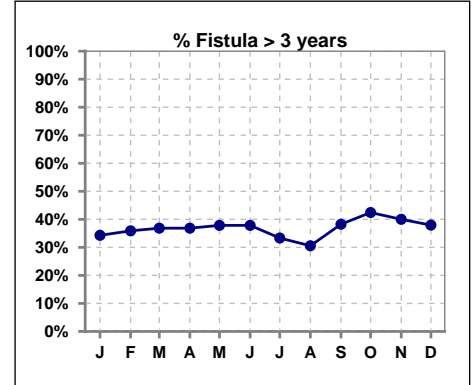
Catheters > 90 days

	Jan	Feb	Mar	Apr	May	Jun	Jul	Aug	Sep	Oct	Nov	Dec
# Access	40	47	48	48	45	45	45	47	48	48	47	46
# Catheters	2	2	2	4	4	6	6	6	6	6	9	11
% Catheters	5%	4%	4%	8%	9%	13%	13%	13%	13%	13%	19%	24%

Definition: Catheter in use on last treatment of the month



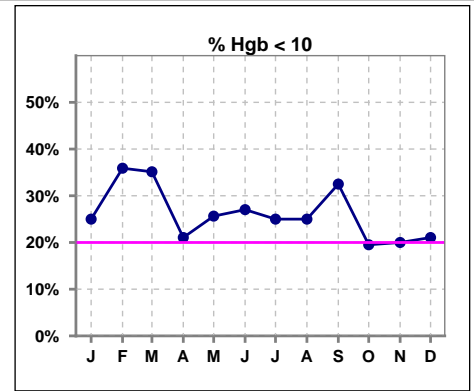
	Jan	Feb	Mar	Apr	May	Jun	Jul	Aug	Sep	Oct	Nov	Dec
# Fistula	35	39	38	38	37	37	36	36	34	33	30	29
# Fistula > 3 yrs	12	14	14	14	14	14	12	11	13	14	12	11
% Fistula > 3 yrs	34%	36%	37%	37%	38%	38%	33%	31%	38%	42%	40%	38%



V. ANEMIA

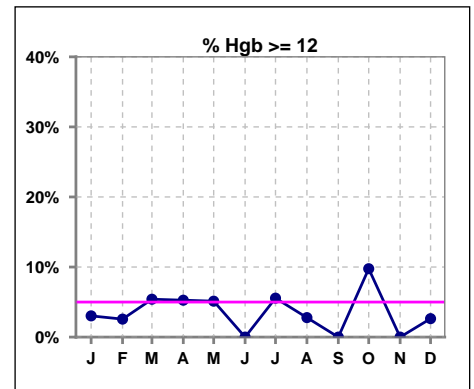
	Jan	Feb	Mar	Apr	May	Jun	Jul	Aug	Sep	Oct	Nov	Dec
# Hgb	36	39	37	38	39	37	36	36	40	41	35	38
# Hgb < 10	9	14	13	8	10	10	9	9	13	8	7	8
Pop. Mean	10.3	10.3	10.3	10.5	10.5	10.4	10.4	10.4	10.4	10.8	10.6	10.5
Std. Deviation	1.1	1.0	1.4	0.9	1.1	1.2	1.2	1.2	1.2	1.0	1.0	1.2
% Hgb < 10	25%	36%	35%	21%	26%	27%	25%	25%	33%	20%	20%	21%

Note: Excludes patients who received no ESA in month.



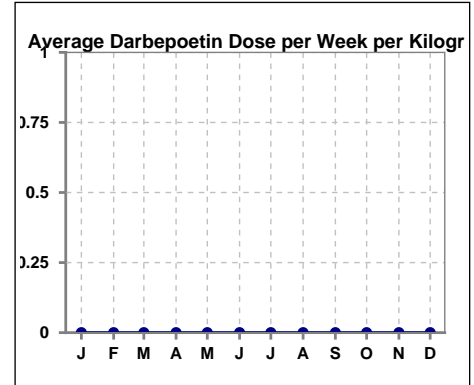
	Jan	Feb	Mar	Apr	May	Jun	Jul	Aug	Sep	Oct	Nov	Dec
# Hgb	33	39	37	38	39	37	36	36	40	41	35	38
# Hgb >= 12	1	1	2	2	2	0	2	1	0	4	0	1
Pop. Mean	10.4	10.3	10.3	10.5	10.5	10.4	10.4	10.4	10.4	10.8	10.6	10.5
Std. Deviation	1.0	1.0	1.4	0.9	1.1	1.2	1.2	1.2	1.2	1.0	1.0	1.2
% Hgb >= 12	3%	3%	5%	5%	5%	0%	6%	3%	0%	10%	0%	3%

Note: Excludes patients who received no ESA in month.



Average Darbepoetin Dose per Week per Kilogram

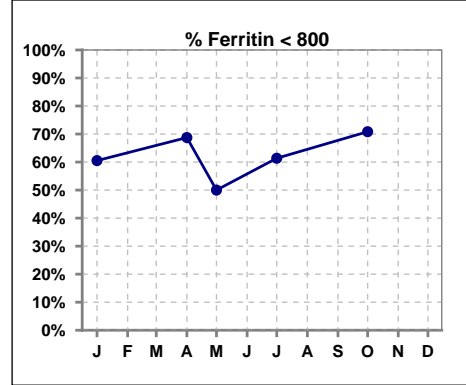
	Jan	Feb	Mar	Apr	May	Jun	Jul	Aug	Sep	Oct	Nov	Dec
# Average Darbepoetin	0	0	0	0	0	0	0	0	0	0	0	0



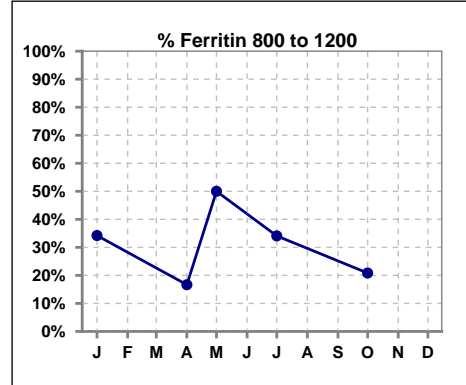
V. ANEMIA - CONT.

Iron Profile

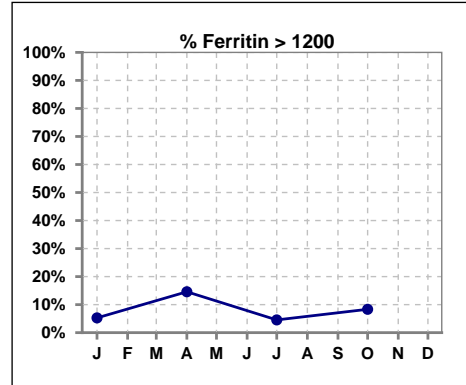
	Jan	Feb	Mar	Apr	May	Jun	Jul	Aug	Sep	Oct	Nov	Dec
# Ferritin	38			48	2		44			48		
# Ferritin < 800	23			33	1		27			34		
Pop. Mean	679			668	522		611			608		
Std. Deviation	347			383	655		370			437		
% Ferritin < 800	61%			69%	50%		61%			71%		



	Jan	Feb	Mar	Apr	May	Jun	Jul	Aug	Sep	Oct	Nov	Dec
# Ferritin	38			48	2		44			48		
# Ferritin 800 to 1200	13			8	1		15			10		
Pop. Mean	679			668	522		611			608		
Std. Deviation	347			383	655		370			437		
% Ferritin 800 to 1200	34%			17%	50%		34%			21%		

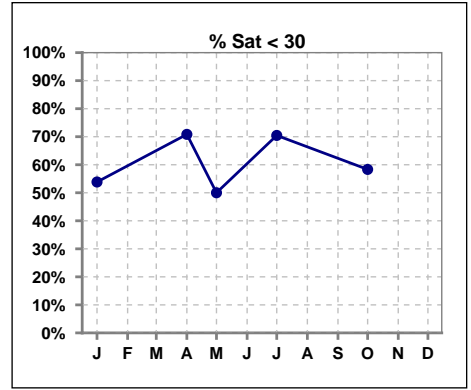


	Jan	Feb	Mar	Apr	May	Jun	Jul	Aug	Sep	Oct	Nov	Dec
# Ferritin	38			48	2		44			48		
# Ferritin > 1200	2			7			2			4		
Pop. Mean	679			668	522		611			608		
Std. Deviation	347			383	655		370			437		
% Ferritin > 1200	5%			15%			5%			8%		

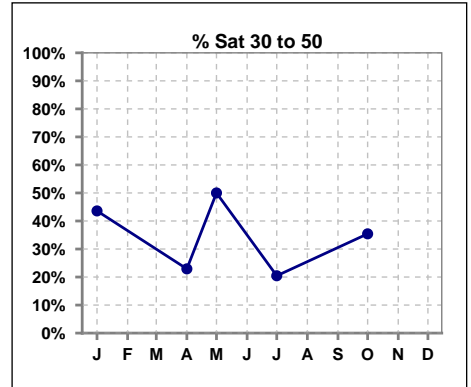


V. ANEMIA - CONT.

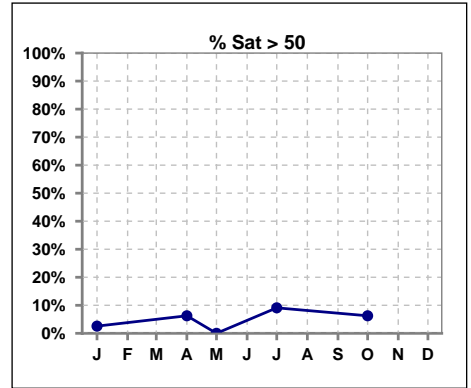
	Jan	Feb	Mar	Apr	May	Jun	Jul	Aug	Sep	Oct	Nov	Dec
# % Sat	39			48	2		44			48		
# % Sat < 30	21			34	1		31			28		
Pop. Mean	28			27	31		27			29		
Std. Deviation	13			16	20		16			16		
% % Sat < 30	54%			71%	50%		70%			58%		



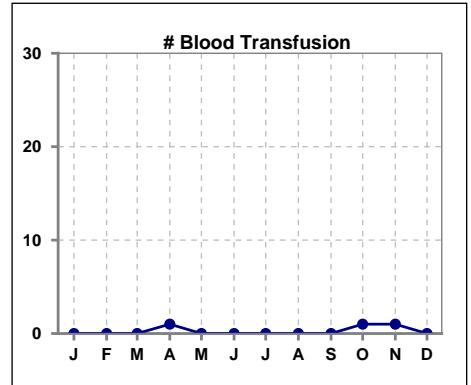
	Jan	Feb	Mar	Apr	May	Jun	Jul	Aug	Sep	Oct	Nov	Dec
# % Sat	39			48	2		44			48		
# % Sat 30 to 50	17			11	1		9			17		
Pop. Mean	28			27	31		27			29		
Std. Deviation	13			16	20		16			16		
% % Sat 30 to 50	44%			23%	50%		20%			35%		



	Jan	Feb	Mar	Apr	May	Jun	Jul	Aug	Sep	Oct	Nov	Dec
# % Sat	39			48	2		44			48		
# % Sat > 50	1			3	0		4			3		
Pop. Mean	28			27	31		27			29		
Std. Deviation	13			16	20		16			16		
% % Sat > 50	3%			6%	0%		9%			6%		



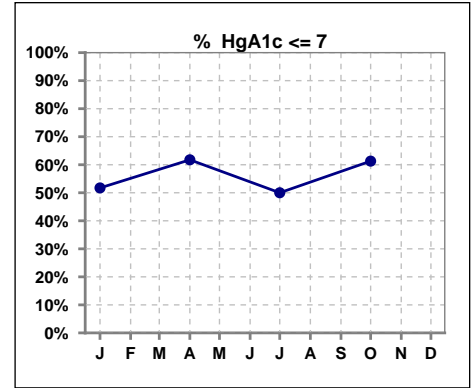
	Jan	Feb	Mar	Apr	May	Jun	Jul	Aug	Sep	Oct	Nov	Dec
# Patient	40	47	48	48	45	45	45	47	48	48	47	46
# Blood Transfusion	0	0	0	1	0	0	0	0	0	1	1	0



Methodology: a) All labs for 'Adequacy of Dialysis', 'Nutrition', 'Osteodystrophy', 'Anemia' and 'Diabetes' based on last value of month; b) BP's and #L processed are average of all values for month; c) Access data takes last access of month; d) Values for SGA and 'Infection Control' use most recent result.

VI. Diabetes

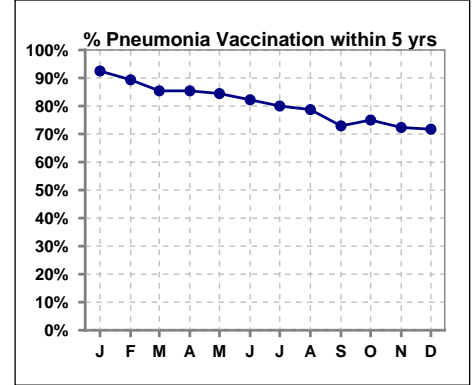
	Jan	Feb	Mar	Apr	May	Jun	Jul	Aug	Sep	Oct	Nov	Dec
# HgA1c	29			34			30			31		
# HgA1c <= 7	15			21			15			19		
Pop. Mean	7.5			7.1			7.3			7.1		
Std. Deviation	1.76			2.01			1.79			1.84		
% HgA1c <= 7	52%			62%			50%			61%		



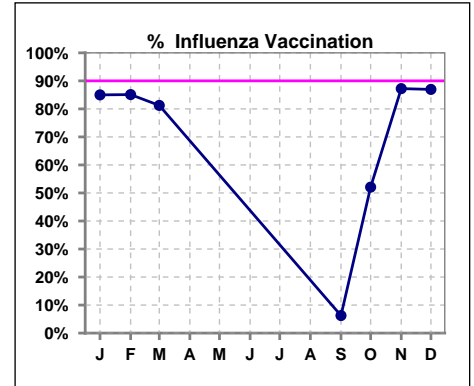
VII. Infection Control

Pneumonia vaccination within the past five years

	Jan	Feb	Mar	Apr	May	Jun	Jul	Aug	Sep	Oct	Nov	Dec
# Patient	40	47	48	48	45	45	45	47	48	48	47	46
# Pneumonia	37	42	41	41	38	37	36	37	35	36	34	33
% Pneumonia	93%	89%	85%	85%	84%	82%	80%	79%	73%	75%	72%	72%



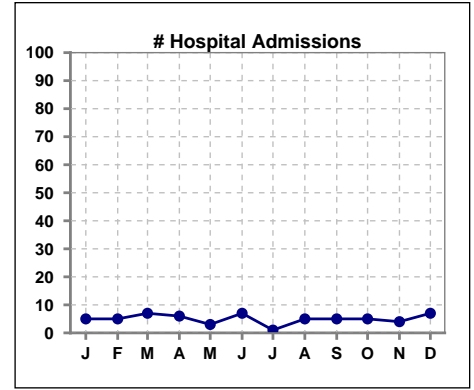
	Jan	Feb	Mar	Apr	May	Jun	Jul	Aug	Sep	Oct	Nov	Dec
# Patient	40	47	48						48	48	47	46
# Influenza	34	40	39						3	25	41	40
% Influenza	85%	85%	81%						6%	52%	87%	87%



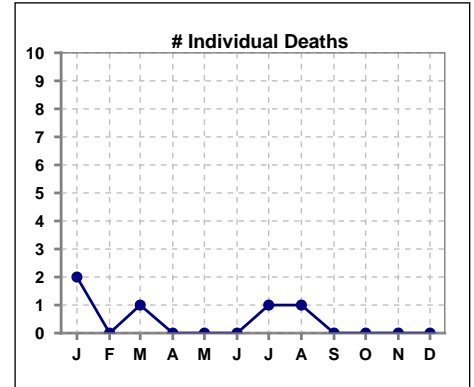
Methodology: a) All labs for 'Adequacy of Dialysis', 'Nutrition', 'Osteodystrophy', 'Anemia' and 'Diabetes' based on last value of month; b) BP's and #L processed are average of all values for month; c) Access data takes last access of month; d) Values for SGA and 'Infection Control' use most recent result.

VIII. Outcome measures

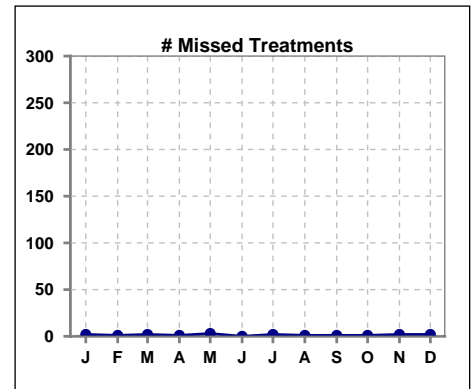
	Jan	Feb	Mar	Apr	May	Jun	Jul	Aug	Sep	Oct	Nov	Dec
# Patient	40	47	48	48	45	45	45	47	48	48	47	46
# Hospital Admissions	5	5	7	6	3	7	1	5	5	5	4	7



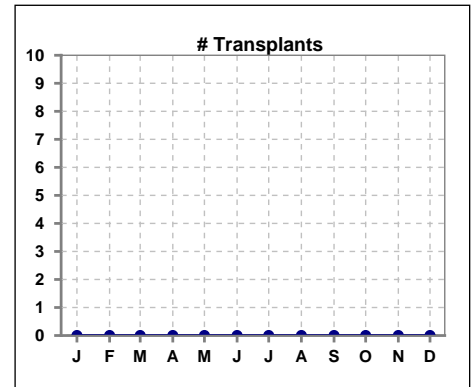
	Jan	Feb	Mar	Apr	May	Jun	Jul	Aug	Sep	Oct	Nov	Dec
# Patient	40	47	48	48	45	45	45	47	48	48	47	46
# Individual Deaths	2	0	1	0	0	0	1	1	0	0	0	0



	Jan	Feb	Mar	Apr	May	Jun	Jul	Aug	Sep	Oct	Nov	Dec
# Patient	40	47	48	48	45	45	45	47	48	48	47	46
# Missed Treatments	2	1	2	1	3	0	2	1	1	1	2	2



	Jan	Feb	Mar	Apr	May	Jun	Jul	Aug	Sep	Oct	Nov	Dec
# Patient	40	47	48	48	45	45	45	47	48	48	47	46
# Transplants	0	0	0	0	0	0	0	0	0	0	0	0



Methodology: a) All labs for 'Adequacy of Dialysis', 'Nutrition', 'Osteodystrophy', 'Anemia' and 'Diabetes' based on last value of month; b) BP's and #L processed are average of all values for month; c) Access data takes last access of month; d) Values for SGA and 'Infection Control' use most recent result.