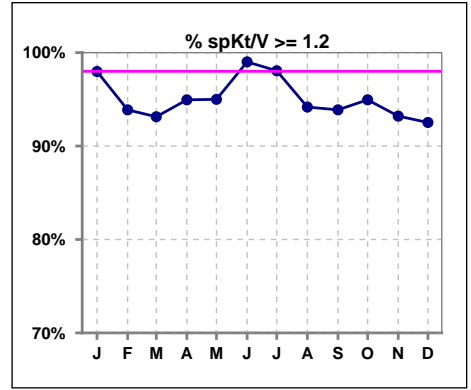
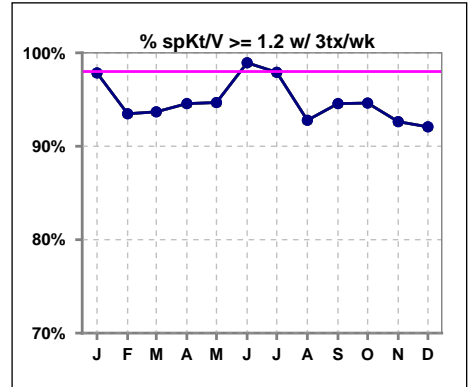


I. ADEQUACY OF DIALYSIS

	Jan	Feb	Mar	Apr	May	Jun	Jul	Aug	Sep	Oct	Nov	Dec
# spKt/V	99	98	102	99	100	101	103	103	98	99	103	107
# spKt/V >= 1.2	97	92	95	94	95	100	101	97	92	94	96	99
Pop. Mean	1.70	1.68	1.65	1.66	1.65	1.66	1.67	1.62	1.64	1.60	1.63	1.62
Std. Deviation	0.25	0.41	0.29	0.34	0.29	0.29	0.27	0.30	0.29	0.29	0.30	0.33
% spKt/V >= 1.2	98%	94%	93%	95%	95%	99%	98%	94%	94%	95%	93%	93%

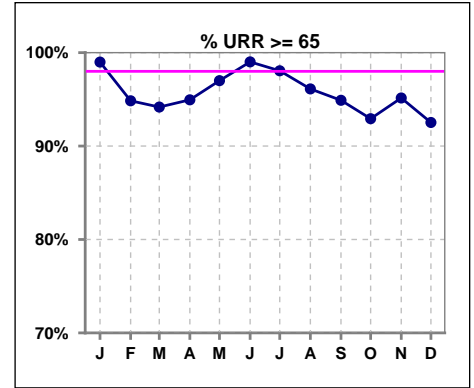


	Jan	Feb	Mar	Apr	May	Jun	Jul	Aug	Sep	Oct	Nov	Dec
# spKt/V w/ 3tx/wk	93	92	95	92	94	94	96	97	92	93	95	101
# spKt/V >= 1.2 w/3tx/wk	91	86	89	87	89	93	94	90	87	88	88	93
Pop. Mean	1.71	1.68	1.65	1.66	1.66	1.67	1.68	1.63	1.65	1.61	1.64	1.62
Std. Deviation	0.25	0.41	0.29	0.34	0.30	0.29	0.27	0.31	0.29	0.30	0.30	0.34
% >= 1.2 w/3tx/wk	98%	93%	94%	95%	95%	99%	98%	93%	95%	95%	93%	92%

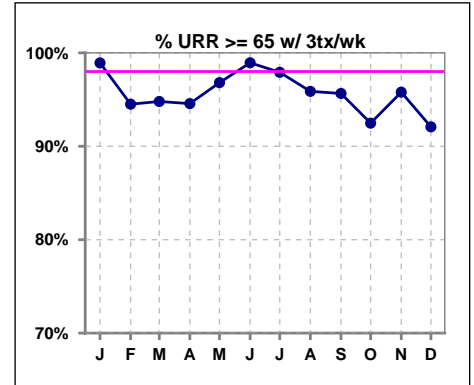


I. ADEQUACY OF DIALYSIS - CONT.

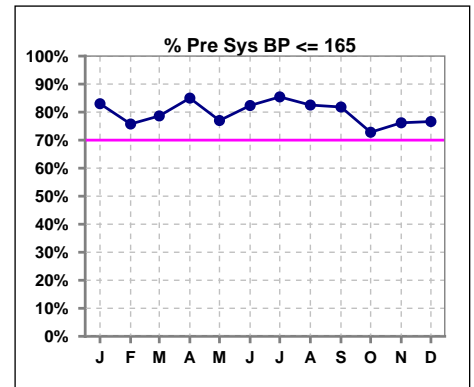
	Jan	Feb	Mar	Apr	May	Jun	Jul	Aug	Sep	Oct	Nov	Dec
# URR	99	97	103	99	100	101	103	103	98	99	103	107
# URR >= 65	98	92	97	94	97	100	101	99	93	92	98	99
Pop. Mean	77	75	75	75	75	76	76	75	75	74	75	75
Std. Deviation	4.69	6.74	5.85	6.73	5.68	5.09	5.12	6.39	5.98	6.50	6.15	7.16
% URR >= 65	99%	95%	94%	95%	97%	99%	98%	96%	95%	93%	95%	93%



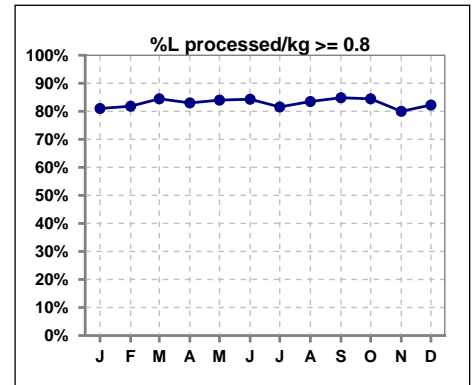
	Jan	Feb	Mar	Apr	May	Jun	Jul	Aug	Sep	Oct	Nov	Dec
# URR w/ 3tx/wk	93	91	96	92	94	94	96	97	92	93	95	101
# URR>=65 w/ 3tx/wk	92	86	91	87	91	93	94	93	88	86	91	93
Pop. Mean	77	75	75	75	75	76	76	75	75	74	75	75
Std. Deviation	4.68	6.78	5.83	6.84	5.76	5.15	5.15	6.50	5.90	6.58	6.08	7.33
% URR>=65 w/ 3tx/wk	99%	95%	95%	95%	97%	99%	98%	96%	96%	92%	96%	92%



	Jan	Feb	Mar	Apr	May	Jun	Jul	Aug	Sep	Oct	Nov	Dec
# Pre Sys BP	100	99	103	100	100	102	103	103	99	103	105	107
# Pre Sys BP <= 165	84	77	81	87	80	86	88	86	82	76	82	83
Pop. Mean	149	150	149	146	148	147	146	147	148	151	151	151
Std. Deviation	19.1	20.0	19.7	18.4	19.7	17.8	18.9	17.8	18.1	18.2	18.6	20.2
% Pre Sys BP <=165	83%	76%	79%	85%	77%	82%	85%	83%	82%	73%	76%	77%



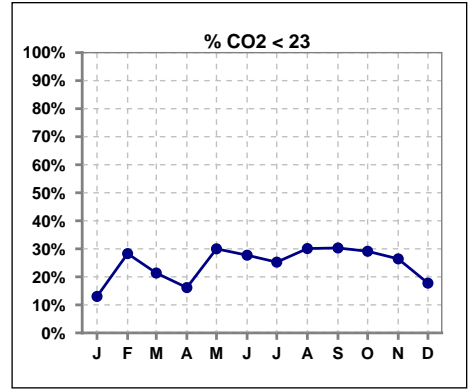
	Jan	Feb	Mar	Apr	May	Jun	Jul	Aug	Sep	Oct	Nov	Dec
# L processed/kg	100	99	103	100	100	102	103	103	99	103	105	107
# L processed/kg>=0.8	81	81	87	83	84	86	84	86	84	87	84	88
Pop. Mean	1	1	1	1	1	1	1	1	1	1	1	1
Std. Deviation	0.3	0.3	0.3	0.3	0.3	0.3	0.3	0.3	0.3	0.3	0.2	0.3
% L processed/kg>=0.8	81%	82%	84%	83%	84%	84%	82%	83%	85%	84%	80%	82%



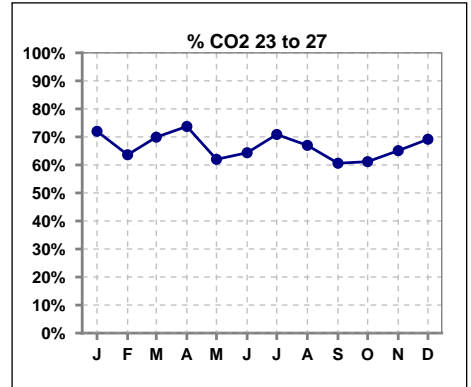
Methodology: a) All labs for 'Adequacy of Dialysis', 'Nutrition', 'Osteodystrophy', 'Anemia' and 'Diabetes' based on last value of month; b) BP's and #L processed are average of all values for month; c) Access data takes last access of month; d) Values for SGA and 'Infection Control' use most recent result.

I. ADEQUACY OF DIALYSIS - CONT.

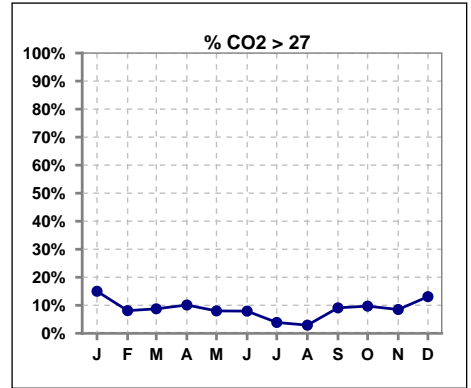
	Jan	Feb	Mar	Apr	May	Jun	Jul	Aug	Sep	Oct	Nov	Dec
# CO2	100	99	103	99	100	101	103	103	99	103	106	107
# CO2 < 23	13	28	22	16	30	28	26	31	30	30	28	19
Pop. Mean	25	24	24	25	24	24	24	23	23	24	24	25
Std. Deviation	2.43	3.01	3.02	3.06	2.95	2.73	2.61	2.54	2.75	2.46	2.96	2.77
% CO2 < 23	13%	28%	21%	16%	30%	28%	25%	30%	30%	29%	26%	18%



	Jan	Feb	Mar	Apr	May	Jun	Jul	Aug	Sep	Oct	Nov	Dec
# CO2	100	99	103	99	100	101	103	103	99	103	106	107
# CO2 23 to 27	72	63	72	73	62	65	73	69	60	63	69	74
Pop. Mean	25	24	24	25	24	24	24	23	23	24	24	25
Std. Deviation	2.43	3.01	3.02	3.06	2.95	2.73	2.61	2.54	2.75	2.46	2.96	2.77
% CO2 23 to 27	72%	64%	70%	74%	62%	64%	71%	67%	61%	61%	65%	69%



	Jan	Feb	Mar	Apr	May	Jun	Jul	Aug	Sep	Oct	Nov	Dec
# CO2	100	99	103	99	100	101	103	103	99	103	106	107
# CO2 > 27	15	8	9	10	8	8	4	3	9	10	9	14
Pop. Mean	25	24	24	25	24	24	24	23	23	24	24	25
Std. Deviation	2.43	3.01	3.02	3.06	2.95	2.73	2.61	2.54	2.75	2.46	2.96	2.77
% CO2 > 27	15%	8%	9%	10%	8%	8%	4%	3%	9%	10%	8%	13%

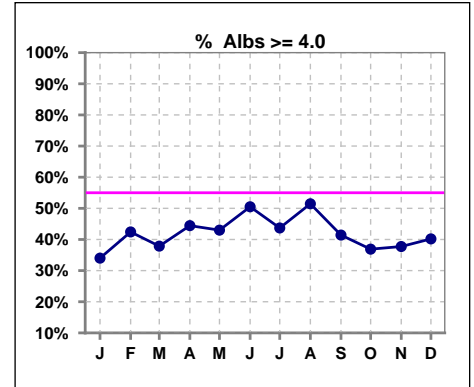


Methodology: a) All labs for 'Adequacy of Dialysis', 'Nutrition', 'Osteodystrophy', 'Anemia' and 'Diabetes' based on last value of month; b) BP's and #L processed are average of all values for month; c) Access data takes last access of month; d) Values for SGA and 'Infection Control' use most recent result.

*Albumin values use BCG method - as of July 2001

II. NUTRITION

	Jan	Feb	Mar	Apr	May	Jun	Jul	Aug	Sep	Oct	Nov	Dec
# Albumin	100	99	103	99	100	101	103	103	99	103	106	107
# Albumin >= 4.0	34	42	39	44	43	51	45	53	41	38	40	43
Pop. Mean	3.8	3.9	3.8	3.9	3.9	3.9	3.9	3.9	3.8	3.8	3.9	3.8
Std. Deviation	0.33	0.33	0.39	0.37	0.38	0.36	0.34	0.37	0.34	0.34	0.35	0.35
% Alb >= 4.0	34%	42%	38%	44%	43%	50%	44%	51%	41%	37%	38%	40%

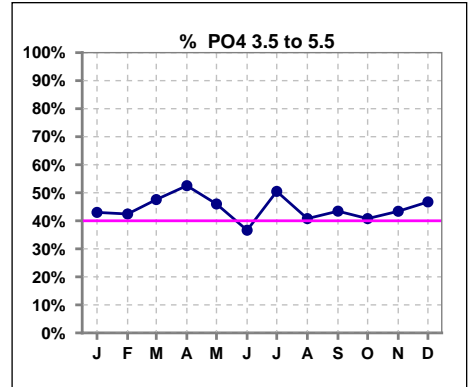


Methodology: a) All labs for 'Adequacy of Dialysis', 'Nutrition', 'Osteodystrophy', 'Anemia' and 'Diabetes' based on last value of month; b) BP's and #L processed are average of all values for month; c) Access data takes last access of month; d) Values for SGA and 'Infection Control' use most recent result.

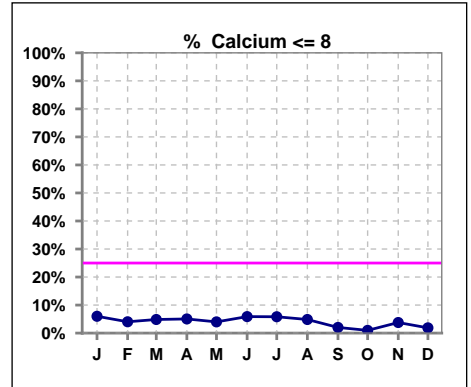
Lab methodology for PTH changed January 2012

III. OSTEODYSTROPHY

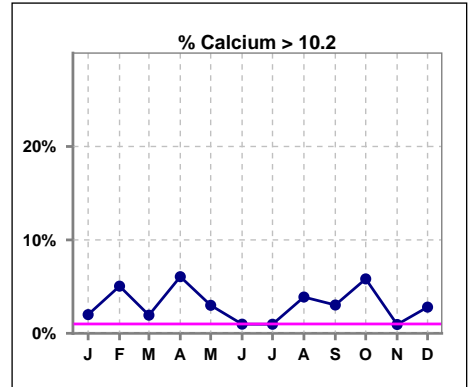
	Jan	Feb	Mar	Apr	May	Jun	Jul	Aug	Sep	Oct	Nov	Dec
# PO4	100	99	103	99	100	101	103	103	99	103	106	107
# PO4 3.5 to 5.5	43	42	49	52	46	37	52	42	43	42	46	50
Pop. Mean	5.8	5.8	6.0	5.9	6.1	6.2	6.2	6.4	6.0	6.0	6.0	5.9
Std. Deviation	1.70	1.69	2.00	1.85	2.13	1.99	2.07	2.22	2.10	1.99	2.11	1.98
% PO4 3.5 to 5.5	43%	42%	48%	53%	46%	37%	50%	41%	43%	41%	43%	47%



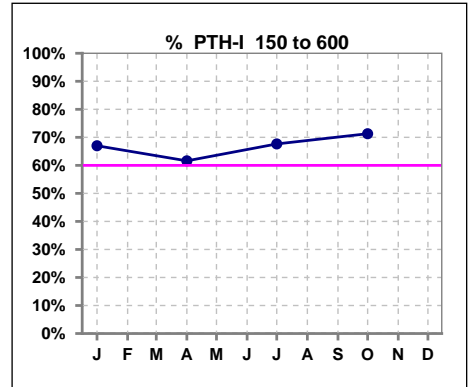
	Jan	Feb	Mar	Apr	May	Jun	Jul	Aug	Sep	Oct	Nov	Dec
# Calcium	100	99	103	99	100	102	103	103	99	103	106	107
# Calcium <= 8	6	4	5	5	4	6	6	5	2	1	4	2
Pop. Mean	9.1	9.3	9.2	9.3	9.2	9.2	9.2	9.2	9.3	9.3	9.2	9.2
Std. Deviation	0.60	0.79	0.64	0.63	0.64	0.62	0.68	0.66	0.60	0.63	0.61	0.62
% Calcium <= 8	6%	4%	5%	5%	4%	6%	6%	5%	2%	1%	4%	2%



	Jan	Feb	Mar	Apr	May	Jun	Jul	Aug	Sep	Oct	Nov	Dec
# Calcium	100	99	103	99	100	102	103	103	99	103	106	107
# Calcium > 10.2	2	5	2	6	3	1	1	4	3	6	1	3
Pop. Mean	9.1	9.3	9.2	9.3	9.2	9.2	9.2	9.2	9.3	9.3	9.2	9.2
Std. Deviation	0.60	0.79	0.64	0.63	0.64	0.62	0.68	0.66	0.60	0.63	0.61	0.62
% Calcium > 10.2	2%	5%	2%	6%	3%	1%	1%	4%	3%	6%	1%	3%



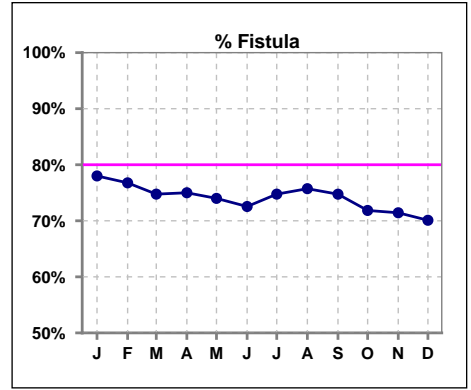
	Jan	Feb	Mar	Apr	May	Jun	Jul	Aug	Sep	Oct	Nov	Dec
# PTH-I	100			99			102			101		
# PTH-I 150 to 600	67			61			69			72		
Pop. Mean	413			453			457			470		
Std. Deviation	310			355			337			432		
% PTH-I 150 to 600	67%			62%			68%			71%		



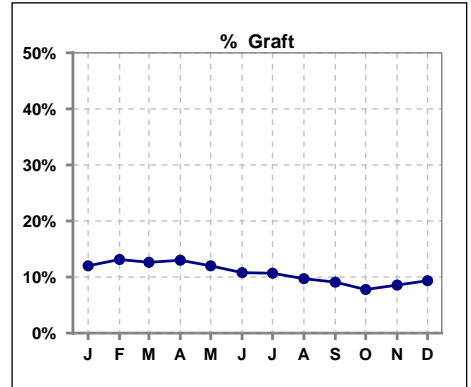
Methodology: a) All labs for 'Adequacy of Dialysis', 'Nutrition', 'Osteodystrophy', 'Anemia' and 'Diabetes' based on last value of month; b) BP's and #L processed are average of all values for month; c) Access data takes last access of month; d) Values for SGA and 'Infection Control' use most recent result.

IV. ACCESS

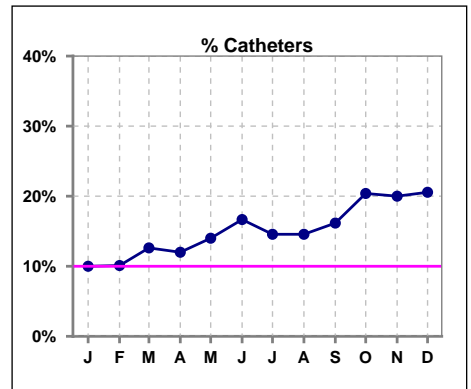
	Jan	Feb	Mar	Apr	May	Jun	Jul	Aug	Sep	Oct	Nov	Dec
# Access	100	99	103	100	100	102	103	103	99	103	105	107
# Fistula	78	76	77	75	74	74	77	78	74	74	75	75
% Fistula	78%	77%	75%	75%	74%	73%	75%	76%	75%	72%	71%	70%



	Jan	Feb	Mar	Apr	May	Jun	Jul	Aug	Sep	Oct	Nov	Dec
# Access	100	99	103	100	100	102	103	103	99	103	105	107
# Graft	12	13	13	13	12	11	11	10	9	8	9	10
% Graft	12%	13%	13%	13%	12%	11%	11%	10%	9%	8%	9%	9%



	Jan	Feb	Mar	Apr	May	Jun	Jul	Aug	Sep	Oct	Nov	Dec
# Access	100	99	103	100	100	102	103	103	99	103	105	107
# Catheters	10	10	13	12	14	17	15	15	16	21	21	22
% Catheters	10%	10%	13%	12%	14%	17%	15%	15%	16%	20%	20%	21%



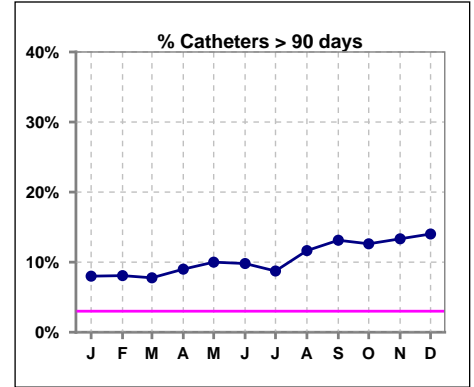
Methodology: a) All labs for 'Adequacy of Dialysis', 'Nutrition', 'Osteodystrophy', 'Anemia' and 'Diabetes' based on last value of month; b) BP's and #L processed are average of all values for month; c) Access data takes last access of month; d) Values for SGA and 'Infection Control' use most recent result.

IV. ACCESS - CONT.

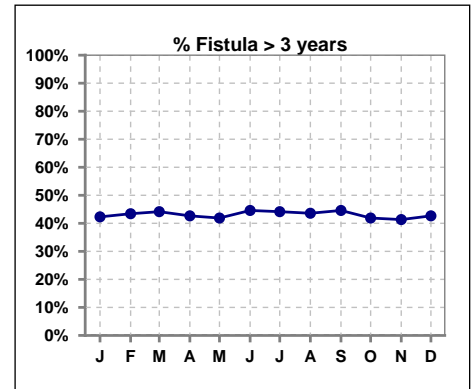
Catheters > 90 days

	Jan	Feb	Mar	Apr	May	Jun	Jul	Aug	Sep	Oct	Nov	Dec
# Access	100	99	103	100	100	102	103	103	99	103	105	107
# Catheters	8	8	8	9	10	10	9	12	13	13	14	15
% Catheters	8%	8%	8%	9%	10%	10%	9%	12%	13%	13%	13%	14%

Definition: Catheter in use on last treatment of the month



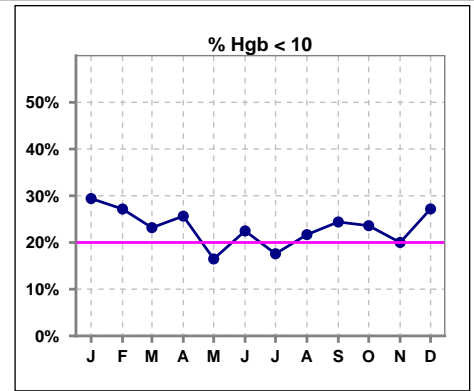
	Jan	Feb	Mar	Apr	May	Jun	Jul	Aug	Sep	Oct	Nov	Dec
# Fistula	78	76	77	75	74	74	77	78	74	74	75	75
# Fistula > 3 yrs	33	33	34	32	31	33	34	34	33	31	31	32
% Fistula > 3 yrs	42%	43%	44%	43%	42%	45%	44%	44%	45%	42%	41%	43%



V. ANEMIA

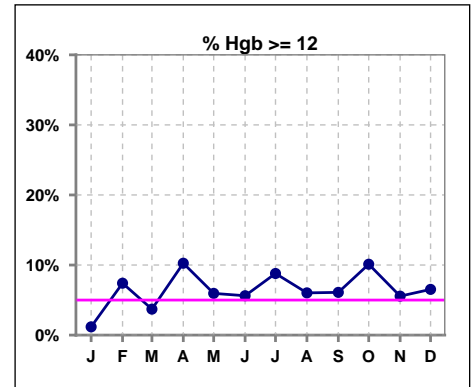
	Jan	Feb	Mar	Apr	May	Jun	Jul	Aug	Sep	Oct	Nov	Dec
# Hgb	85	81	82	78	85	89	91	83	82	89	90	92
# Hgb < 10	25	22	19	20	14	20	16	18	20	21	18	25
Pop. Mean	10.4	10.4	10.4	10.6	10.8	10.7	10.8	10.6	10.6	10.5	10.6	10.5
Std. Deviation	1.1	1.1	1.1	1.3	1.1	1.2	1.0	1.1	1.0	1.2	1.0	1.4
% Hgb < 10	29%	27%	23%	26%	16%	22%	18%	22%	24%	24%	20%	27%

Note: Excludes patients who received no ESA in month.



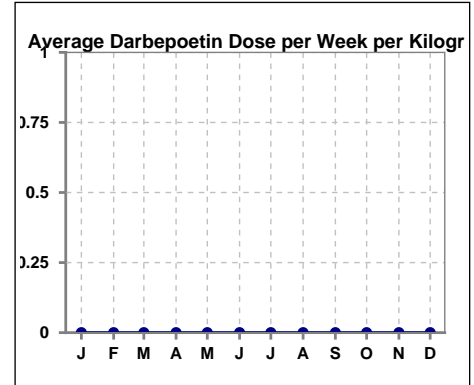
	Jan	Feb	Mar	Apr	May	Jun	Jul	Aug	Sep	Oct	Nov	Dec
# Hgb	85	81	81	78	84	89	91	83	82	89	90	92
# Hgb >= 12	1	6	3	8	5	5	8	5	5	9	5	6
Pop. Mean	10.4	10.4	10.4	10.6	10.8	10.7	10.8	10.6	10.6	10.5	10.6	10.5
Std. Deviation	1.1	1.1	1.2	1.3	1.1	1.2	1.0	1.1	1.0	1.2	1.0	1.4
% Hgb >= 12	1%	7%	4%	10%	6%	6%	9%	6%	6%	10%	6%	7%

Note: Excludes patients who received no ESA in month.



Average Darbepoetin Dose per Week per Kilogram

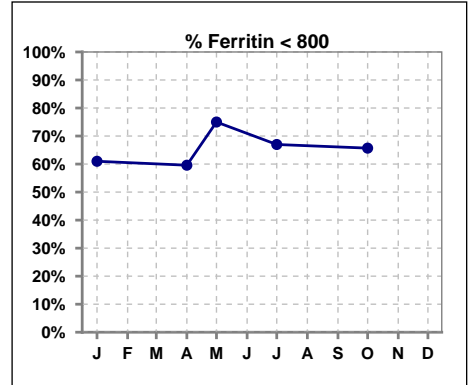
	Jan	Feb	Mar	Apr	May	Jun	Jul	Aug	Sep	Oct	Nov	Dec
# Average Darbepoetin	0	0	0	0	0	0	0	0	0	0	0	0



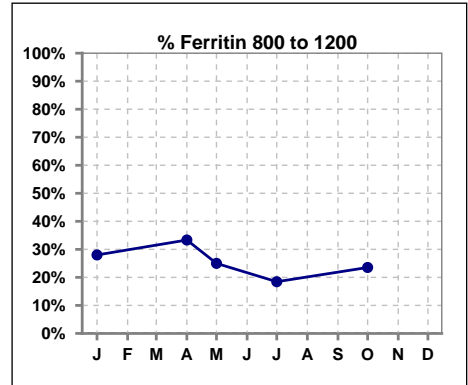
V. ANEMIA - CONT.

Iron Profile

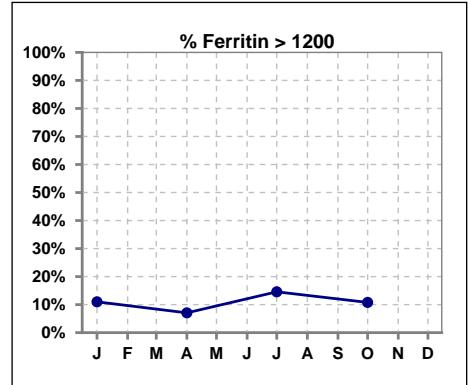
	Jan	Feb	Mar	Apr	May	Jun	Jul	Aug	Sep	Oct	Nov	Dec
# Ferritin	100			99	4		103			102		
# Ferritin < 800	61			59	3		69			67		
Pop. Mean	728			670	335		666			649		
Std. Deviation	407			351	458		405			385		
% Ferritin < 800	61%			60%	75%		67%			66%		



	Jan	Feb	Mar	Apr	May	Jun	Jul	Aug	Sep	Oct	Nov	Dec
# Ferritin	100			99	4		103			102		
# Ferritin 800 to 1200	28			33	1		19			24		
Pop. Mean	728			670	335		666			649		
Std. Deviation	407			351	458		405			385		
% Ferritin 800 to 1200	28%			33%	25%		18%			24%		



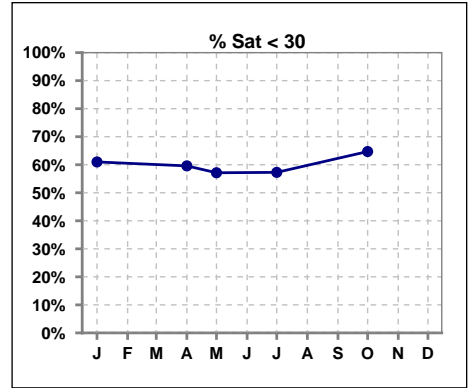
	Jan	Feb	Mar	Apr	May	Jun	Jul	Aug	Sep	Oct	Nov	Dec
# Ferritin	100			99	4		103			102		
# Ferritin > 1200	11			7			15			11		
Pop. Mean	728			670	335		666			649		
Std. Deviation	407			351	458		405			385		
% Ferritin > 1200	11%			7%			15%			11%		



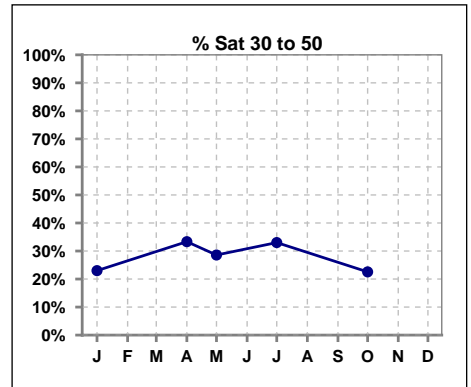
Methodology: a) All labs for 'Adequacy of Dialysis', 'Nutrition', 'Osteodystrophy', 'Anemia' and 'Diabetes' based on last value of month; b) BP's and #L processed are average of all values for month; c) Access data takes last access of month; d) Values for SGA and 'Infection Control' use most recent result.

V. ANEMIA - CONT.

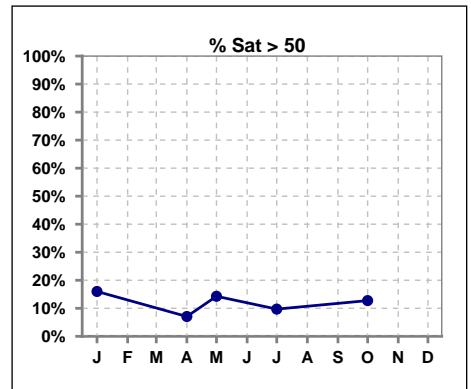
	Jan	Feb	Mar	Apr	May	Jun	Jul	Aug	Sep	Oct	Nov	Dec
# % Sat	100			99	7		103			102		
# % Sat < 30	61			59	4		59			66		
Pop. Mean	32			31	34		29			30		
Std. Deviation	17			17	23		13			16		
%% Sat < 30	61%			60%	57%		57%			65%		



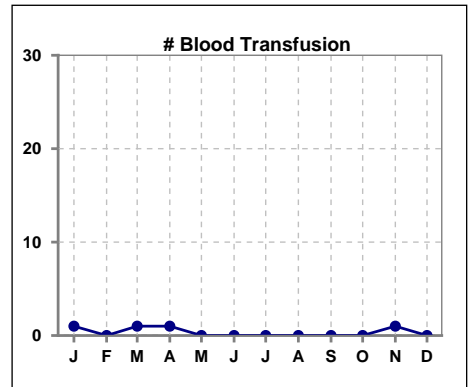
	Jan	Feb	Mar	Apr	May	Jun	Jul	Aug	Sep	Oct	Nov	Dec
# % Sat	100			99	7		103			102		
# % Sat 30 to 50	23			33	2		34			23		
Pop. Mean	32			31	34		29			30		
Std. Deviation	17			17	23		13			16		
%% Sat 30 to 50	23%			33%	29%		33%			23%		



	Jan	Feb	Mar	Apr	May	Jun	Jul	Aug	Sep	Oct	Nov	Dec
# % Sat	100			99	7		103			102		
# % Sat > 50	16			7	1		10			13		
Pop. Mean	32			31	34		29			30		
Std. Deviation	17			17	23		13			16		
%% Sat > 50	16%			7%	14%		10%			13%		



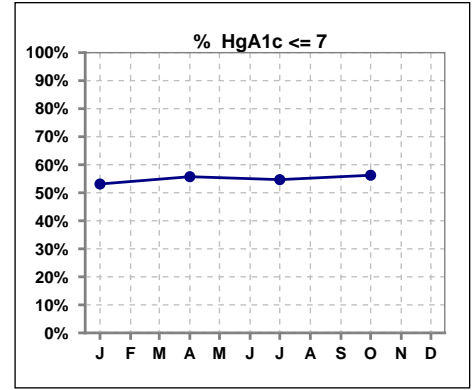
	Jan	Feb	Mar	Apr	May	Jun	Jul	Aug	Sep	Oct	Nov	Dec
# Patient	100	100	103	101	100	102	103	103	99	103	106	108
# Blood Transfusion	1	0	1	1	0	0	0	0	0	0	1	0



Methodology: a) All labs for 'Adequacy of Dialysis', 'Nutrition', 'Osteodystrophy', 'Anemia' and 'Diabetes' based on last value of month; b) BP's and #L processed are average of all values for month; c) Access data takes last access of month; d) Values for SGA and 'Infection Control' use most recent result.

VI. Diabetes

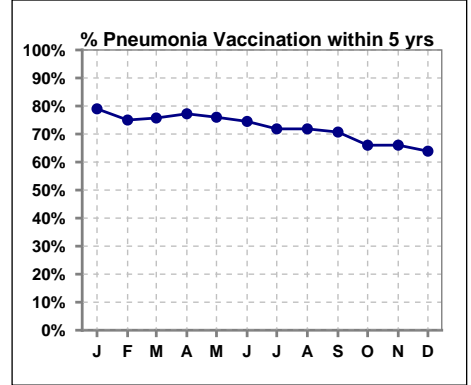
	Jan	Feb	Mar	Apr	May	Jun	Jul	Aug	Sep	Oct	Nov	Dec
# HgA1c	64			61			64			64		
# HgA1c <= 7	34			34			35			36		
Pop. Mean	7.0			7.0			7.1			7.3		
Std. Deviation	1.71			1.64			1.61			1.89		
% HgA1c <= 7	53%			56%			55%			56%		



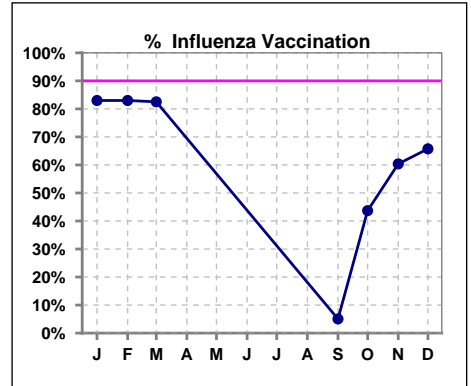
VII. Infection Control

Pneumonia vaccination within the past five years

	Jan	Feb	Mar	Apr	May	Jun	Jul	Aug	Sep	Oct	Nov	Dec
# Patient	100	100	103	101	100	102	103	103	99	103	106	108
# Pneumonia	79	75	78	78	76	76	74	74	70	68	70	69
% Pneumonia	79%	75%	76%	77%	76%	75%	72%	72%	71%	66%	66%	64%



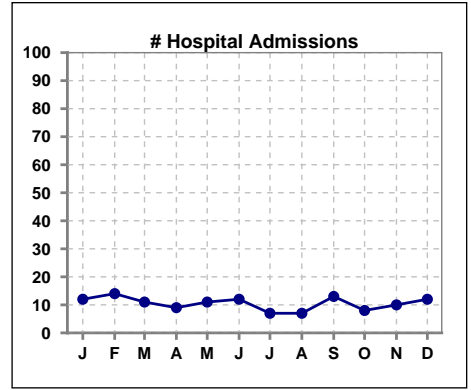
	Jan	Feb	Mar	Apr	May	Jun	Jul	Aug	Sep	Oct	Nov	Dec
# Patient	100	100	103						99	103	106	108
# Influenza	83	83	85						5	45	64	71
% Influenza	83%	83%	83%						5%	44%	60%	66%



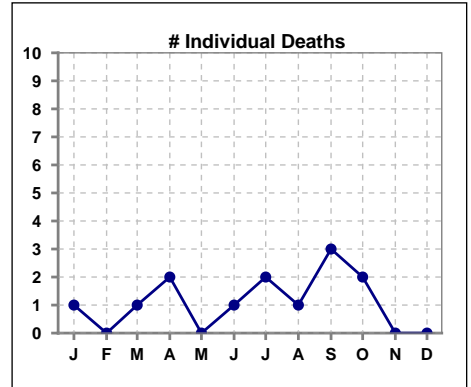
Methodology: a) All labs for 'Adequacy of Dialysis', 'Nutrition', 'Osteodystrophy', 'Anemia' and 'Diabetes' based on last value of month; b) BP's and #L processed are average of all values for month; c) Access data takes last access of month; d) Values for SGA and 'Infection Control' use most recent result.

VIII. Outcome measures

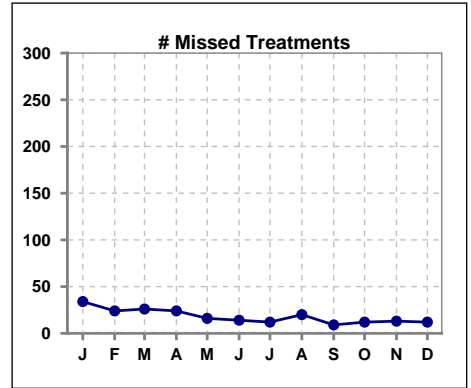
	Jan	Feb	Mar	Apr	May	Jun	Jul	Aug	Sep	Oct	Nov	Dec
# Patient	100	100	103	101	100	102	103	103	99	103	106	108
# Hospital Admissions	12	14	11	9	11	12	7	7	13	8	10	12



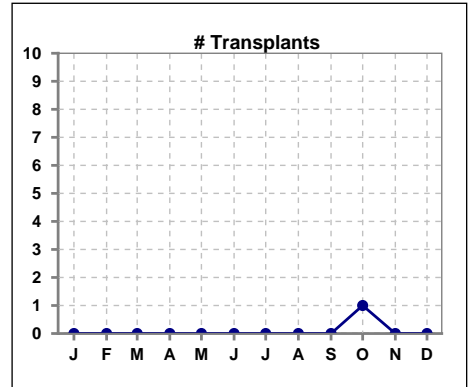
	Jan	Feb	Mar	Apr	May	Jun	Jul	Aug	Sep	Oct	Nov	Dec
# Patient	100	100	103	101	100	102	103	103	99	103	106	108
# Individual Deaths	1	0	1	2	0	1	2	1	3	2	0	0



	Jan	Feb	Mar	Apr	May	Jun	Jul	Aug	Sep	Oct	Nov	Dec
# Patient	100	100	103	101	100	102	103	103	99	103	106	108
# Missed Treatments	34	24	26	24	16	14	12	20	9	12	13	12



	Jan	Feb	Mar	Apr	May	Jun	Jul	Aug	Sep	Oct	Nov	Dec
# Patient	100	100	103	101	100	102	103	103	99	103	106	108
# Transplants	0	0	0	0	0	0	0	0	0	1	0	0



Methodology: a) All labs for 'Adequacy of Dialysis', 'Nutrition', 'Osteodystrophy', 'Anemia' and 'Diabetes' based on last value of month; b) BP's and #L processed are average of all values for month; c) Access data takes last access of month; d) Values for SGA and 'Infection Control' use most recent result.