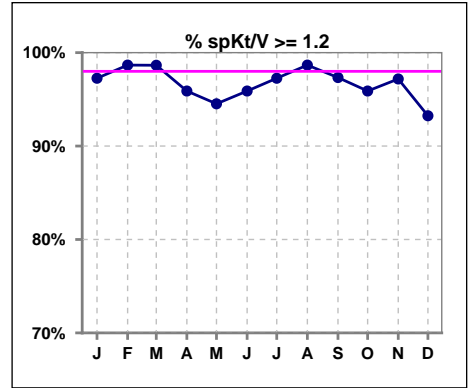
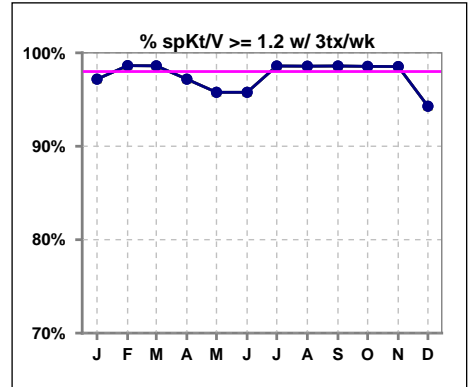


I. ADEQUACY OF DIALYSIS

	Jan	Feb	Mar	Apr	May	Jun	Jul	Aug	Sep	Oct	Nov	Dec
# spKt/V	73	75	74	73	73	73	73	75	75	73	71	74
# spKt/V >= 1.2	71	74	73	70	69	70	71	74	73	70	69	69
Pop. Mean	1.62	1.60	1.63	1.59	1.58	1.60	1.59	1.59	1.60	1.56	1.62	1.56
Std. Deviation	0.29	0.26	0.26	0.31	0.32	0.32	0.28	0.26	0.29	0.29	0.45	0.31
% spKt/V >= 1.2	97%	99%	99%	96%	95%	96%	97%	99%	97%	96%	97%	93%

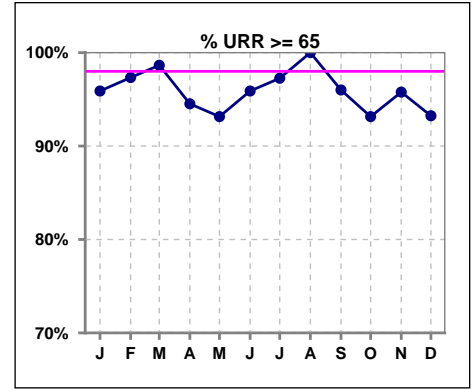


	Jan	Feb	Mar	Apr	May	Jun	Jul	Aug	Sep	Oct	Nov	Dec
# spKt/V w/ 3tx/wk	71	73	72	71	71	71	71	70	71	69	68	70
# spKt/V >= 1.2 w/3tx/wk	69	72	71	69	68	68	70	69	70	68	67	66
Pop. Mean	1.63	1.61	1.64	1.61	1.59	1.61	1.60	1.60	1.61	1.58	1.63	1.57
Std. Deviation	0.29	0.26	0.26	0.30	0.31	0.32	0.27	0.26	0.28	0.28	0.45	0.31
% >= 1.2 w/3tx/wk	97%	99%	99%	97%	96%	96%	99%	99%	99%	99%	99%	94%

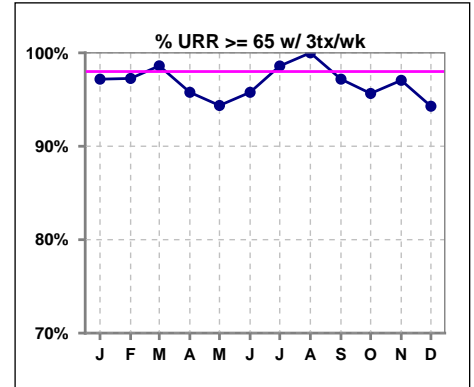


I. ADEQUACY OF DIALYSIS - CONT.

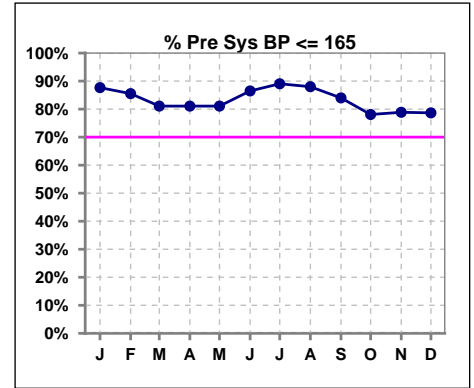
	Jan	Feb	Mar	Apr	May	Jun	Jul	Aug	Sep	Oct	Nov	Dec
# URR	73	75	74	73	73	73	73	75	75	73	71	74
# URR >= 65	70	73	73	69	68	70	71	75	72	68	68	69
Pop. Mean	75	74	75	74	73	74	74	74	74	73	74	73
Std. Deviation	6.50	5.36	5.13	7.20	7.32	7.41	5.72	5.26	5.71	5.87	8.03	7.04
% URR >= 65	96%	97%	99%	95%	93%	96%	97%	100%	96%	93%	96%	93%



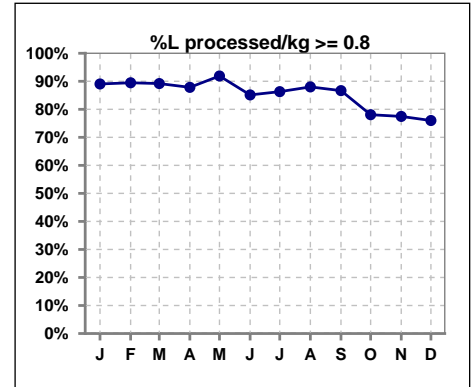
	Jan	Feb	Mar	Apr	May	Jun	Jul	Aug	Sep	Oct	Nov	Dec
# URR w/ 3tx/wk	71	73	72	71	71	71	71	70	71	69	68	70
# URR>=65 w/ 3tx/wk	69	71	71	68	67	68	70	70	69	66	66	66
Pop. Mean	75	75	75	74	74	74	74	74	75	74	74	74
Std. Deviation	6.44	5.30	5.04	6.74	6.68	7.45	5.54	5.12	5.53	5.62	7.91	6.54
% URR>=65 w/ 3tx/wk	97%	97%	99%	96%	94%	96%	99%	100%	97%	96%	97%	94%



	Jan	Feb	Mar	Apr	May	Jun	Jul	Aug	Sep	Oct	Nov	Dec
# Pre Sys BP	73	76	74	74	74	74	73	75	75	73	71	75
# Pre Sys BP <= 165	64	65	62	60	61	65	66	66	64	57	56	60
Pop. Mean	143	144	145	144	143	143	141	143	144	148	150	149
Std. Deviation	23.6	22.4	23.0	22.6	21.6	20.9	19.9	19.1	21.1	23.9	23.2	22.3
% Pre Sys BP <=165	88%	86%	81%	81%	81%	86%	89%	88%	84%	78%	79%	79%



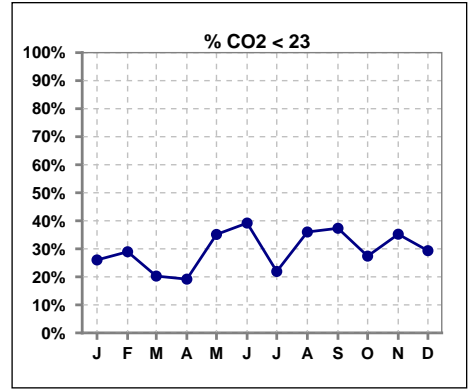
	Jan	Feb	Mar	Apr	May	Jun	Jul	Aug	Sep	Oct	Nov	Dec
# L processed/kg	73	76	74	74	74	74	73	75	75	73	71	75
# L processed/kg>=0.8	65	68	66	65	68	63	63	66	65	57	55	57
Pop. Mean	1	1	1	1	1	1	1	1	1	1	1	1
Std. Deviation	1.3	0.4	0.7	0.5	0.6	0.3	1.4	0.4	2.5	0.3	0.3	0.3
% L processed/kg>=0.8	89%	89%	89%	88%	92%	85%	86%	88%	87%	78%	77%	76%



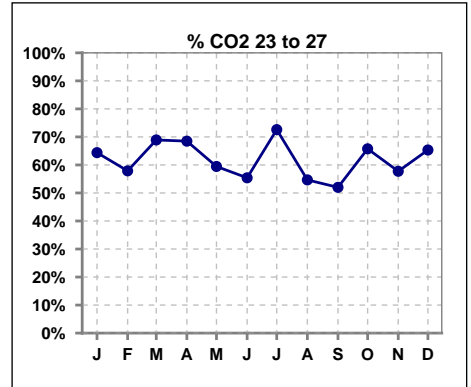
Methodology: a) All labs for 'Adequacy of Dialysis', 'Nutrition', 'Osteodystrophy', 'Anemia' and 'Diabetes' based on last value of month; b) BP's and #L processed are average of all values for month; c) Access data takes last access of month; d) Values for SGA and 'Infection Control' use most recent result.

I. ADEQUACY OF DIALYSIS - CONT.

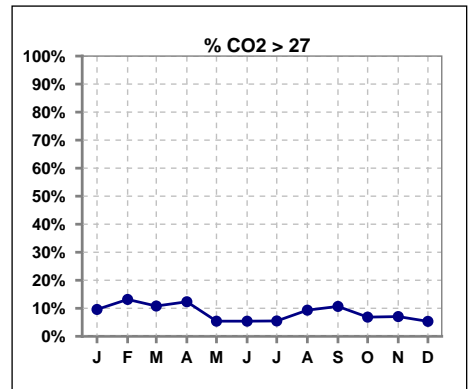
	Jan	Feb	Mar	Apr	May	Jun	Jul	Aug	Sep	Oct	Nov	Dec
# CO2	73	76	74	73	74	74	73	75	75	73	71	75
# CO2 < 23	19	22	15	14	26	29	16	27	28	20	25	22
Pop. Mean	24	24	25	24	23	23	24	23	24	24	24	24
Std. Deviation	3.43	3.22	2.79	2.87	3.06	3.42	3.39	2.65	3.09	2.60	2.66	2.49
% CO2 < 23	26%	29%	20%	19%	35%	39%	22%	36%	37%	27%	35%	29%



	Jan	Feb	Mar	Apr	May	Jun	Jul	Aug	Sep	Oct	Nov	Dec
# CO2	73	76	74	73	74	74	73	75	75	73	71	75
# CO2 23 to 27	47	44	51	50	44	41	53	41	39	48	41	49
Pop. Mean	24	24	25	24	23	23	24	23	24	24	24	24
Std. Deviation	3.43	3.22	2.79	2.87	3.06	3.42	3.39	2.65	3.09	2.60	2.66	2.49
% CO2 23 to 27	64%	58%	69%	68%	59%	55%	73%	55%	52%	66%	58%	65%



	Jan	Feb	Mar	Apr	May	Jun	Jul	Aug	Sep	Oct	Nov	Dec
# CO2	73	76	74	73	74	74	73	75	75	73	71	75
# CO2 > 27	7	10	8	9	4	4	4	7	8	5	5	4
Pop. Mean	24	24	25	24	23	23	24	23	24	24	24	24
Std. Deviation	3.43	3.22	2.79	2.87	3.06	3.42	3.39	2.65	3.09	2.60	2.66	2.49
% CO2 > 27	10%	13%	11%	12%	5%	5%	5%	9%	11%	7%	7%	5%

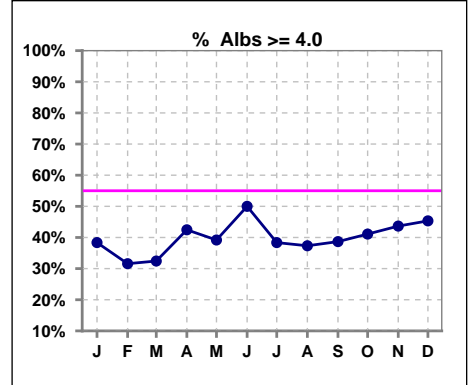


Methodology: a) All labs for 'Adequacy of Dialysis', 'Nutrition', 'Osteodystrophy', 'Anemia' and 'Diabetes' based on last value of month; b) BP's and #L processed are average of all values for month; c) Access data takes last access of month; d) Values for SGA and 'Infection Control' use most recent result.

*Albumin values use BCG method - as of July 2001

II. NUTRITION

	Jan	Feb	Mar	Apr	May	Jun	Jul	Aug	Sep	Oct	Nov	Dec
# Albumin	73	76	74	73	74	74	73	75	75	73	71	75
# Albumin >= 4.0	28	24	24	31	29	37	28	28	29	30	31	34
Pop. Mean	3.8	3.8	3.8	3.8	3.8	3.9	3.8	3.8	3.8	3.8	3.8	3.9
Std. Deviation	0.42	0.47	0.42	0.45	0.42	0.44	0.41	0.42	0.39	0.37	0.43	0.40
% Alb >= 4.0	38%	32%	32%	42%	39%	50%	38%	37%	39%	41%	44%	45%

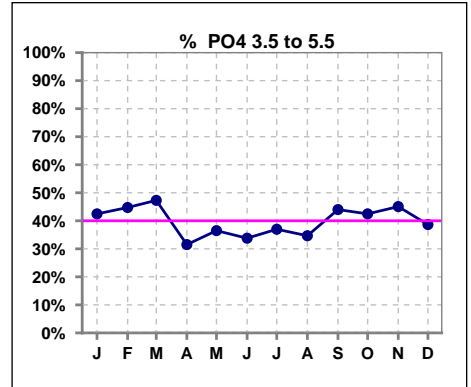


Methodology: a) All labs for 'Adequacy of Dialysis', 'Nutrition', 'Osteodystrophy', 'Anemia' and 'Diabetes' based on last value of month; b) BP's and #L processed are average of all values for month; c) Access data takes last access of month; d) Values for SGA and 'Infection Control' use most recent result.

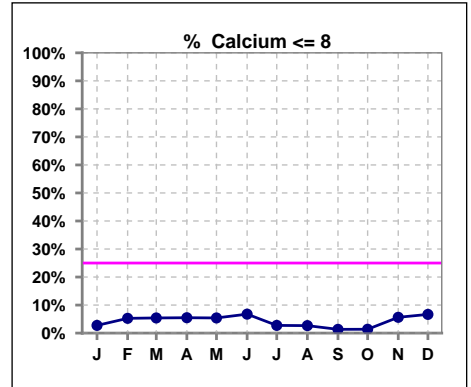
Lab methodology for PTH changed January 2012

III. OSTEODYSTROPHY

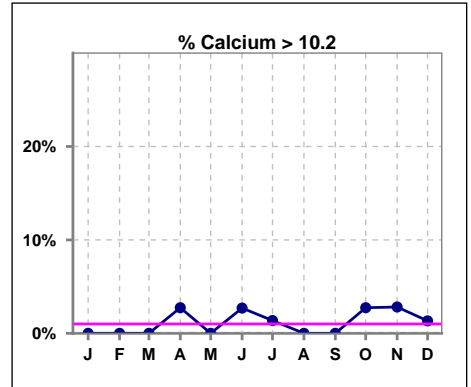
	Jan	Feb	Mar	Apr	May	Jun	Jul	Aug	Sep	Oct	Nov	Dec
# PO4	73	76	74	73	74	74	73	75	75	73	71	75
# PO4 3.5 to 5.5	31	34	35	23	27	25	27	26	33	31	32	29
Pop. Mean	6.1	5.8	5.8	6.2	6.0	6.3	6.2	6.3	6.0	6.3	6.1	6.0
Std. Deviation	1.94	1.72	1.77	2.04	2.12	2.07	1.85	2.15	2.04	2.10	2.08	2.10
% PO4 3.5 to 5.5	42%	45%	47%	32%	36%	34%	37%	35%	44%	42%	45%	39%



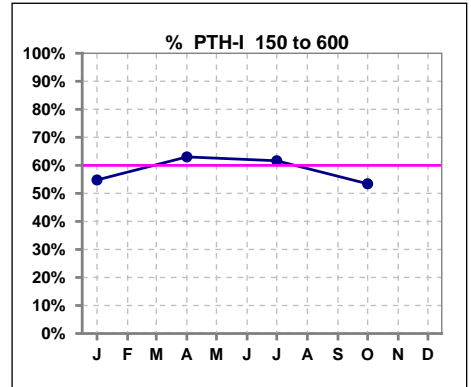
	Jan	Feb	Mar	Apr	May	Jun	Jul	Aug	Sep	Oct	Nov	Dec
# Calcium	73	76	74	73	74	74	73	75	75	73	71	75
# Calcium <= 8	2	4	4	4	4	5	2	2	1	1	4	5
Pop. Mean	9.1	9.0	9.1	9.1	9.2	9.3	9.2	9.2	9.3	9.3	9.2	9.2
Std. Deviation	0.59	0.61	0.64	0.65	0.66	0.65	0.65	0.59	0.57	0.66	0.75	0.70
% Calcium <= 8	3%	5%	5%	5%	5%	7%	3%	3%	1%	1%	6%	7%



	Jan	Feb	Mar	Apr	May	Jun	Jul	Aug	Sep	Oct	Nov	Dec
# Calcium	73	76	74	73	74	74	73	75	75	73	71	75
# Calcium > 10.2	0	0	0	2	0	2	1	0	0	2	2	1
Pop. Mean	9.1	9.0	9.1	9.1	9.2	9.3	9.2	9.2	9.3	9.3	9.2	9.2
Std. Deviation	0.59	0.61	0.64	0.65	0.66	0.65	0.65	0.59	0.57	0.66	0.75	0.70
% Calcium > 10.2	0%	0%	0%	3%	0%	3%	1%	0%	0%	3%	3%	1%



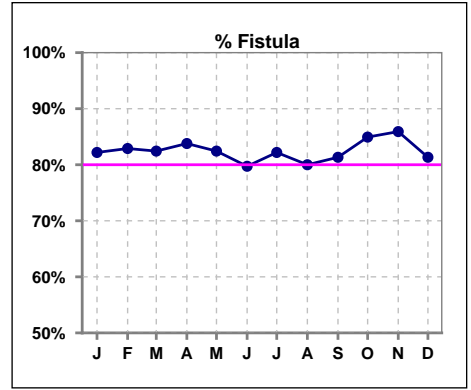
	Jan	Feb	Mar	Apr	May	Jun	Jul	Aug	Sep	Oct	Nov	Dec
# PTH-I	73			73			73			73		
# PTH-I 150 to 600	40			46			45			39		
Pop. Mean	543			512			550			590		
Std. Deviation	527			531			644			640		
% PTH-I 150 to 600	55%			63%			62%			53%		



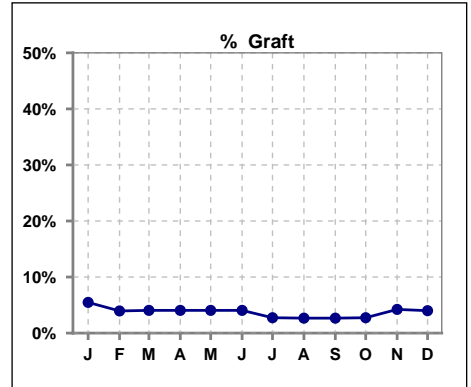
Methodology: a) All labs for 'Adequacy of Dialysis', 'Nutrition', 'Osteodystrophy', 'Anemia' and 'Diabetes' based on last value of month; b) BP's and #L processed are average of all values for month; c) Access data takes last access of month; d) Values for SGA and 'Infection Control' use most recent result.

IV. ACCESS

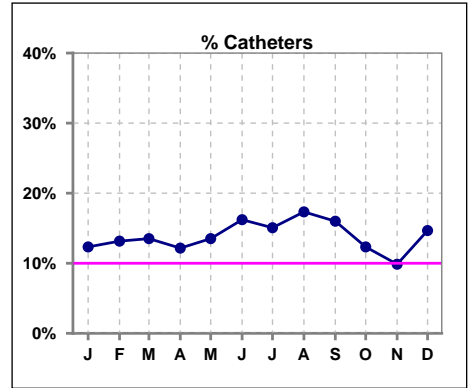
	Jan	Feb	Mar	Apr	May	Jun	Jul	Aug	Sep	Oct	Nov	Dec
# Access	73	76	74	74	74	74	73	75	75	73	71	75
# Fistula	60	63	61	62	61	59	60	60	61	62	61	61
% Fistula	82%	83%	82%	84%	82%	80%	82%	80%	81%	85%	86%	81%



	Jan	Feb	Mar	Apr	May	Jun	Jul	Aug	Sep	Oct	Nov	Dec
# Access	73	76	74	74	74	74	73	75	75	73	71	75
# Graft	4	3	3	3	3	3	2	2	2	2	3	3
% Graft	5%	4%	4%	4%	4%	4%	3%	3%	3%	3%	4%	4%



	Jan	Feb	Mar	Apr	May	Jun	Jul	Aug	Sep	Oct	Nov	Dec
# Access	73	76	74	74	74	74	73	75	75	73	71	75
# Catheters	9	10	10	9	10	12	11	13	12	9	7	11
% Catheters	12%	13%	14%	12%	14%	16%	15%	17%	16%	12%	10%	15%



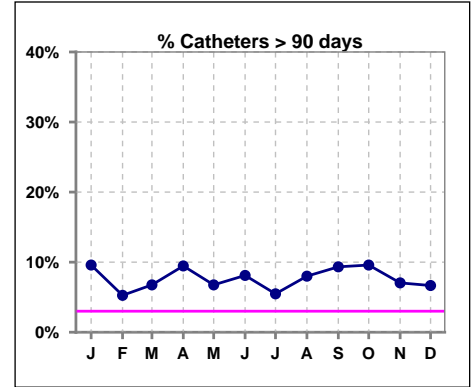
Methodology: a) All labs for 'Adequacy of Dialysis', 'Nutrition', 'Osteodystrophy', 'Anemia' and 'Diabetes' based on last value of month; b) BP's and #L processed are average of all values for month; c) Access data takes last access of month; d) Values for SGA and 'Infection Control' use most recent result.

IV. ACCESS - CONT.

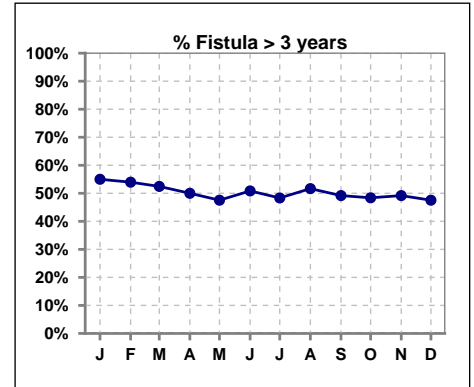
Catheters > 90 days

	Jan	Feb	Mar	Apr	May	Jun	Jul	Aug	Sep	Oct	Nov	Dec
# Access	73	76	74	74	74	74	73	75	75	73	71	75
# Catheters	7	4	5	7	5	6	4	6	7	7	5	5
% Catheters	10%	5%	7%	9%	7%	8%	5%	8%	9%	10%	7%	7%

Definition: Catheter in use on last treatment of the month



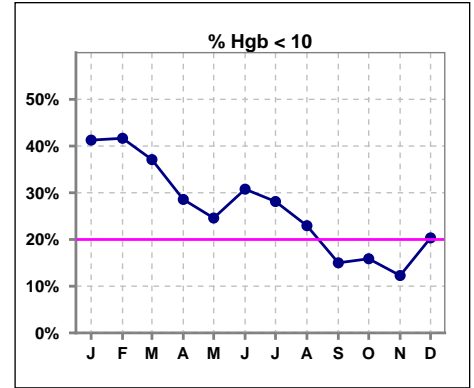
	Jan	Feb	Mar	Apr	May	Jun	Jul	Aug	Sep	Oct	Nov	Dec
# Fistula	60	63	61	62	61	59	60	60	61	62	61	61
# Fistula > 3 yrs	33	34	32	31	29	30	29	31	30	30	30	29
% Fistula > 3 yrs	55%	54%	52%	50%	48%	51%	48%	52%	49%	48%	49%	48%



V. ANEMIA

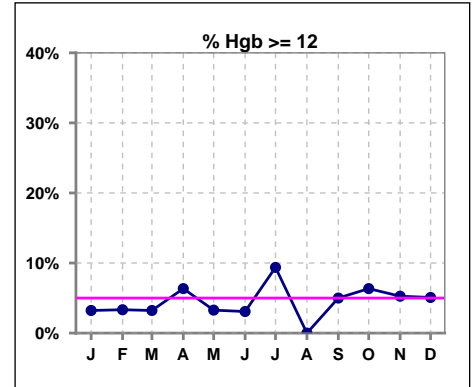
	Jan	Feb	Mar	Apr	May	Jun	Jul	Aug	Sep	Oct	Nov	Dec
# Hgb	63	60	62	63	61	65	64	61	60	63	57	59
# Hgb < 10	26	25	23	18	15	20	18	14	9	10	7	12
Pop. Mean	10.1	10.2	10.3	10.5	10.5	10.5	10.5	10.3	10.6	10.7	10.7	10.5
Std. Deviation	1.3	1.2	1.1	1.3	1.1	1.2	1.4	1.1	1.1	1.2	1.1	1.1
% Hgb < 10	41%	42%	37%	29%	25%	31%	28%	23%	15%	16%	12%	20%

Note: Excludes patients who received no ESA in month.



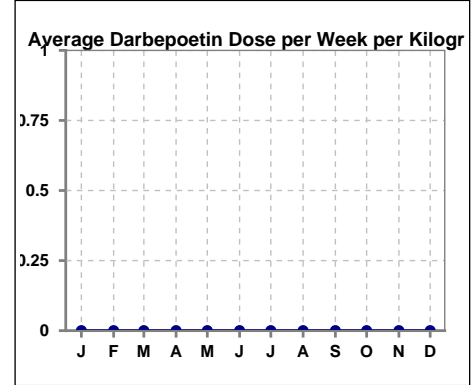
	Jan	Feb	Mar	Apr	May	Jun	Jul	Aug	Sep	Oct	Nov	Dec
# Hgb	62	60	62	63	61	65	64	61	60	63	57	59
# Hgb >= 12	2	2	2	4	2	2	6	0	3	4	3	3
Pop. Mean	10.1	10.2	10.3	10.5	10.5	10.5	10.5	10.3	10.6	10.7	10.7	10.5
Std. Deviation	1.3	1.2	1.1	1.3	1.1	1.2	1.4	1.1	1.1	1.2	1.1	1.1
% Hgb >= 12	3%	3%	3%	6%	3%	3%	9%	0%	5%	6%	5%	5%

Note: Excludes patients who received no ESA in month.



Average Darbepoetin Dose per Week per Kilogram

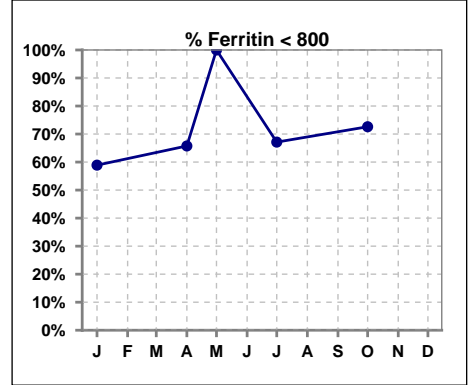
	Jan	Feb	Mar	Apr	May	Jun	Jul	Aug	Sep	Oct	Nov	Dec
# Average Darbepoetin	0	0	0	0	0	0	0	0	0	0	0	0



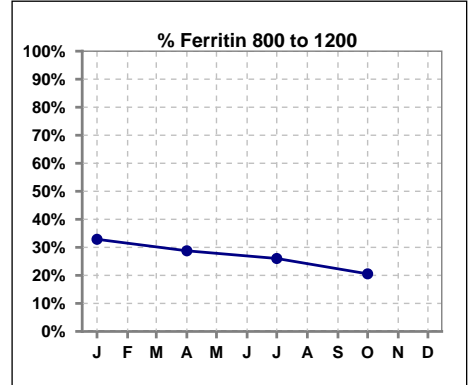
V. ANEMIA - CONT.

Iron Profile

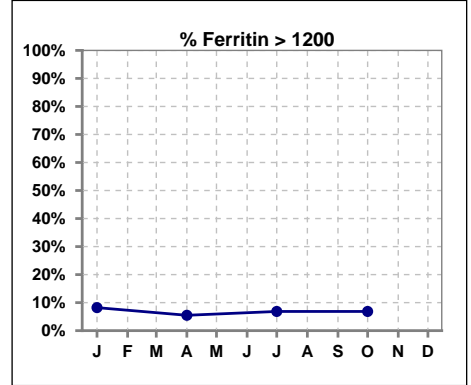
	Jan	Feb	Mar	Apr	May	Jun	Jul	Aug	Sep	Oct	Nov	Dec
# Ferritin	73			73	2		73			73		
# Ferritin < 800	43			48	2		49			53		
Pop. Mean	835			644	476		633			640		
Std. Deviation	922			348	111		416			361		
% Ferritin < 800	59%			66%	100%		67%			73%		



	Jan	Feb	Mar	Apr	May	Jun	Jul	Aug	Sep	Oct	Nov	Dec
# Ferritin	73			73	2		73			73		
# Ferritin 800 to 1200	24			21			19			15		
Pop. Mean	835			644	476		633			640		
Std. Deviation	922			348	111		416			361		
% Ferritin 800 to 1200	33%			29%			26%			21%		



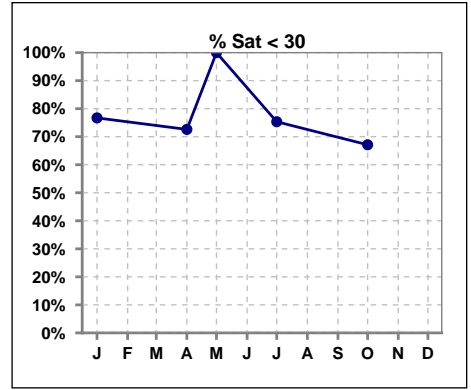
	Jan	Feb	Mar	Apr	May	Jun	Jul	Aug	Sep	Oct	Nov	Dec
# Ferritin	73			73	2		73			73		
# Ferritin > 1200	6			4			5			5		
Pop. Mean	835			644	476		633			640		
Std. Deviation	922			348	111		416			361		
% Ferritin > 1200	8%			5%			7%			7%		



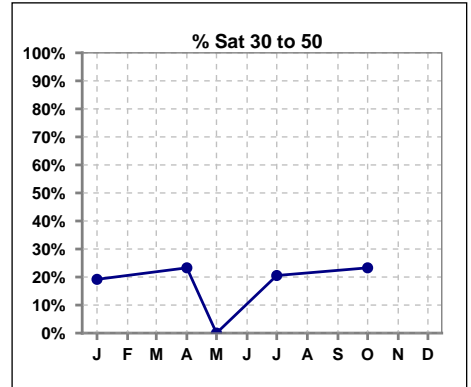
Methodology: a) All labs for 'Adequacy of Dialysis', 'Nutrition', 'Osteodystrophy', 'Anemia' and 'Diabetes' based on last value of month; b) BP's and #L processed are average of all values for month; c) Access data takes last access of month; d) Values for SGA and 'Infection Control' use most recent result.

V. ANEMIA - CONT.

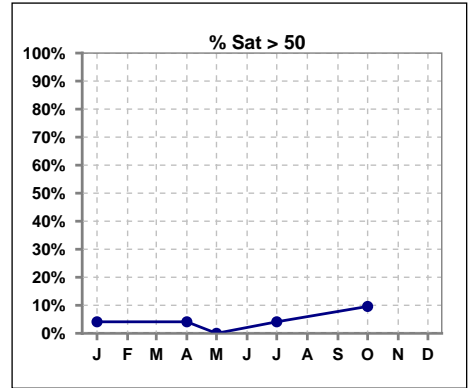
	Jan	Feb	Mar	Apr	May	Jun	Jul	Aug	Sep	Oct	Nov	Dec
# % Sat	73			73	3		73			73		
# % Sat < 30	56			53	3		55			49		
Pop. Mean	24			24	18		25			27		
Std. Deviation	11			13	1		13			16		
% % Sat < 30	77%			73%	100%		75%			67%		



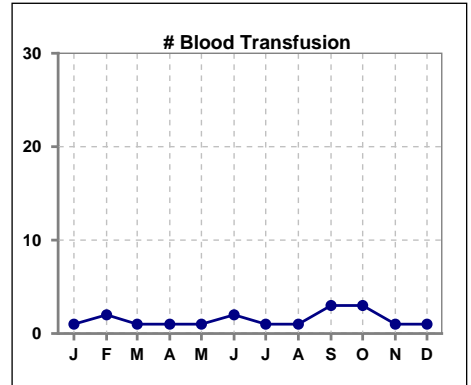
	Jan	Feb	Mar	Apr	May	Jun	Jul	Aug	Sep	Oct	Nov	Dec
# % Sat	73			73	3		73			73		
# % Sat 30 to 50	14			17	0		15			17		
Pop. Mean	24			24	18		25			27		
Std. Deviation	11			13	1		13			16		
% % Sat 30 to 50	19%			23%	0%		21%			23%		



	Jan	Feb	Mar	Apr	May	Jun	Jul	Aug	Sep	Oct	Nov	Dec
# % Sat	73			73	3		73			73		
# % Sat > 50	3			3	0		3			7		
Pop. Mean	24			24	18		25			27		
Std. Deviation	11			13	1		13			16		
% % Sat > 50	4%			4%	0%		4%			10%		



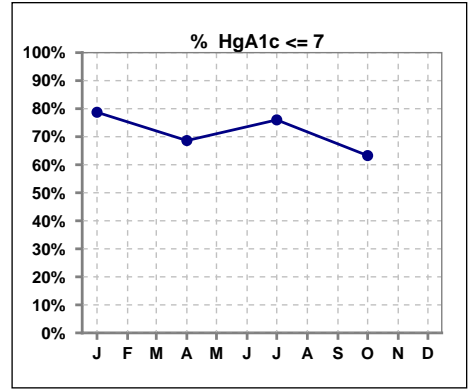
	Jan	Feb	Mar	Apr	May	Jun	Jul	Aug	Sep	Oct	Nov	Dec
# Patient	73	76	74	74	74	74	73	75	75	73	71	75
# Blood Transfusion	1	2	1	1	1	2	1	1	3	3	1	1



Methodology: a) All labs for 'Adequacy of Dialysis', 'Nutrition', 'Osteodystrophy', 'Anemia' and 'Diabetes' based on last value of month; b) BP's and #L processed are average of all values for month; c) Access data takes last access of month; d) Values for SGA and 'Infection Control' use most recent result.

VI. Diabetes

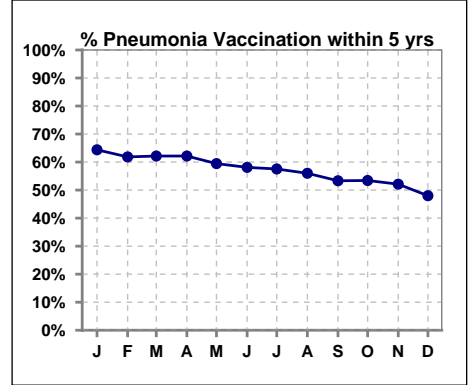
	Jan	Feb	Mar	Apr	May	Jun	Jul	Aug	Sep	Oct	Nov	Dec
# HgA1c	47			51			50			49		
# HgA1c <= 7	37			35			38			31		
Pop. Mean	6.4			6.7			6.8			7.0		
Std. Deviation	1.39			1.54			1.62			1.81		
% HgA1c <= 7	79%			69%			76%			63%		



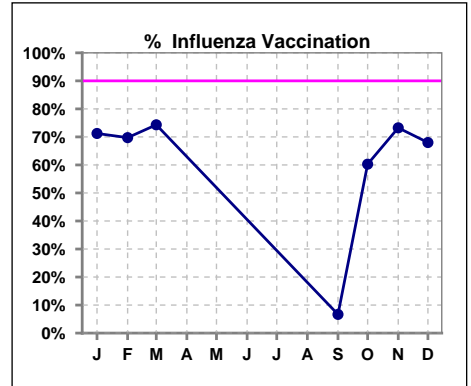
VII. Infection Control

Pneumonia vaccination within the past five years

	Jan	Feb	Mar	Apr	May	Jun	Jul	Aug	Sep	Oct	Nov	Dec
# Patient	73	76	74	74	74	74	73	75	75	73	71	75
# Pneumonia	47	47	46	46	44	43	42	42	40	39	37	36
% Pneumonia	64%	62%	62%	62%	59%	58%	58%	56%	53%	53%	52%	48%



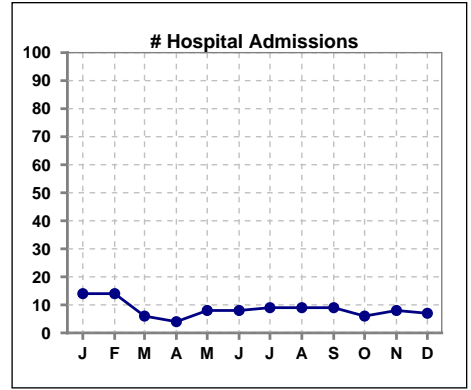
	Jan	Feb	Mar	Apr	May	Jun	Jul	Aug	Sep	Oct	Nov	Dec
# Patient	73	76	74						75	73	71	75
# Influenza	52	53	55						5	44	52	51
% Influenza	71%	70%	74%						7%	60%	73%	68%



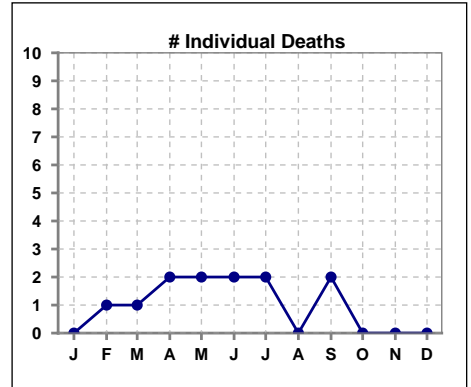
Methodology: a) All labs for 'Adequacy of Dialysis', 'Nutrition', 'Osteodystrophy', 'Anemia' and 'Diabetes' based on last value of month; b) BP's and #L processed are average of all values for month; c) Access data takes last access of month; d) Values for SGA and 'Infection Control' use most recent result.

VIII. Outcome measures

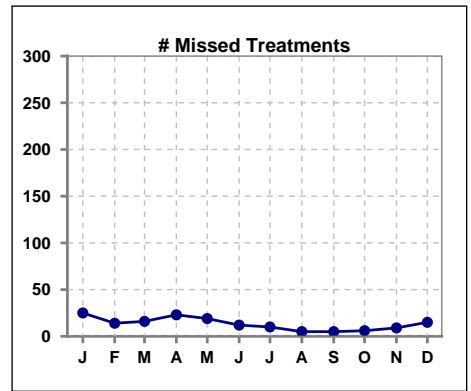
	Jan	Feb	Mar	Apr	May	Jun	Jul	Aug	Sep	Oct	Nov	Dec
# Patient	73	76	74	74	74	74	73	75	75	73	71	75
# Hospital Admissions	14	14	6	4	8	8	9	9	9	6	8	7



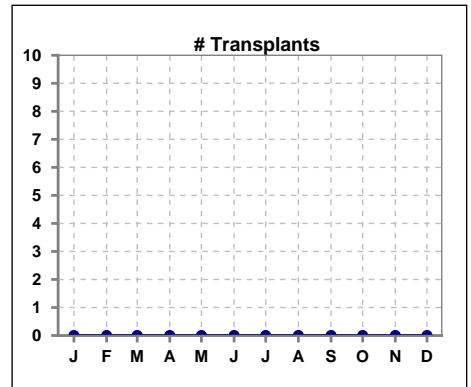
	Jan	Feb	Mar	Apr	May	Jun	Jul	Aug	Sep	Oct	Nov	Dec
# Patient	73	76	74	74	74	74	73	75	75	73	71	75
# Individual Deaths	0	1	1	2	2	2	2	0	2	0	0	0



	Jan	Feb	Mar	Apr	May	Jun	Jul	Aug	Sep	Oct	Nov	Dec
# Patient	73	76	74	74	74	74	73	75	75	73	71	75
# Missed Treatments	25	14	16	23	19	12	10	5	5	6	9	15



	Jan	Feb	Mar	Apr	May	Jun	Jul	Aug	Sep	Oct	Nov	Dec
# Patient	73	76	74	74	74	74	73	75	75	73	71	75
# Transplants	0	0	0	0	0	0	0	0	0	0	0	0



Methodology: a) All labs for 'Adequacy of Dialysis', 'Nutrition', 'Osteodystrophy', 'Anemia' and 'Diabetes' based on last value of month; b) BP's and #L processed are average of all values for month; c) Access data takes last access of month; d) Values for SGA and 'Infection Control' use most recent result.