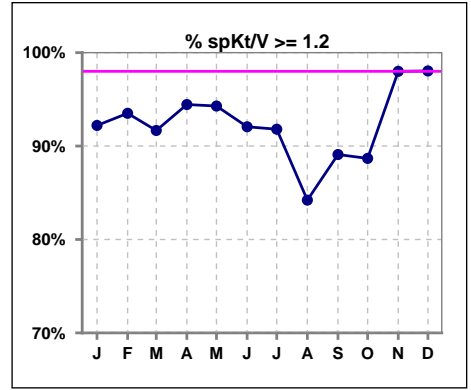
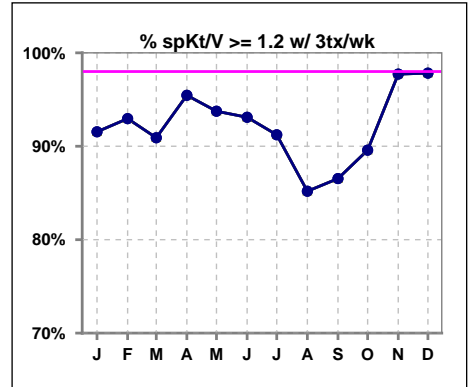


**I. ADEQUACY OF DIALYSIS**

	Jan	Feb	Mar	Apr	May	Jun	Jul	Aug	Sep	Oct	Nov	Dec
# spKt/V	77	77	72	72	70	63	61	57	55	53	50	51
# spKt/V >= 1.2	71	72	66	68	66	58	56	48	49	47	49	50
Pop. Mean	1.61	1.58	1.61	1.62	1.61	1.57	1.56	1.47	1.52	1.58	1.59	1.64
Std. Deviation	0.31	0.32	0.37	0.35	0.33	0.32	0.34	0.32	0.36	0.38	0.32	0.34
% spKt/V >= 1.2	92%	94%	92%	94%	94%	92%	92%	84%	89%	89%	98%	98%

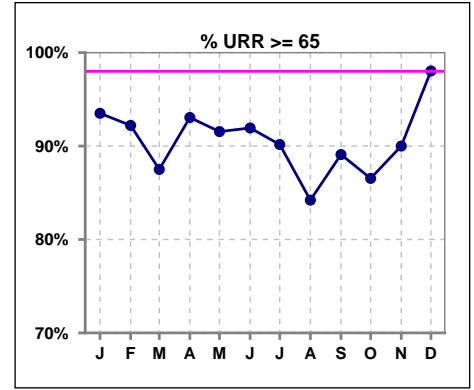


	Jan	Feb	Mar	Apr	May	Jun	Jul	Aug	Sep	Oct	Nov	Dec
# spKt/V w/ 3tx/wk	71	71	66	66	64	58	57	54	52	48	44	46
# spKt/V >= 1.2 w/3tx/wk	65	66	60	63	60	54	52	46	45	43	43	45
Pop. Mean	1.62	1.59	1.63	1.64	1.62	1.59	1.56	1.48	1.52	1.59	1.58	1.64
Std. Deviation	0.31	0.33	0.38	0.35	0.34	0.33	0.35	0.32	0.36	0.37	0.34	0.35
% >= 1.2 w/3tx/wk	92%	93%	91%	95%	94%	93%	91%	85%	87%	90%	98%	98%

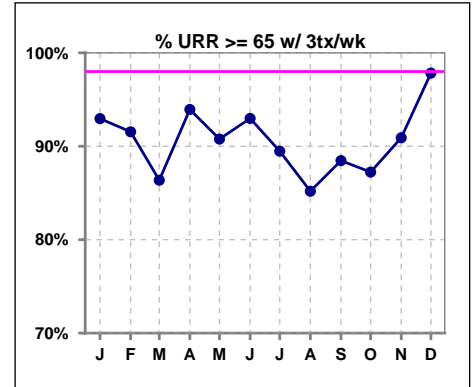


**I. ADEQUACY OF DIALYSIS - CONT.**

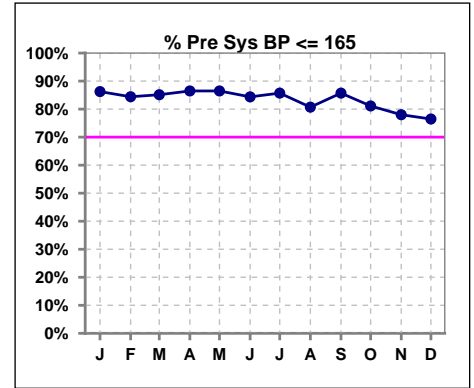
	Jan	Feb	Mar	Apr	May	Jun	Jul	Aug	Sep	Oct	Nov	Dec
# URR	77	77	72	72	71	62	61	57	55	52	50	51
# URR >= 65	72	71	63	67	65	57	55	48	49	45	45	50
Pop. Mean	74	74	74	74	74	73	73	71	72	74	73	75
Std. Deviation	6.88	7.05	8.71	7.49	7.38	7.09	8.07	8.17	10.86	7.47	8.22	6.80
% URR >= 65	94%	92%	88%	93%	92%	92%	90%	84%	89%	87%	90%	98%



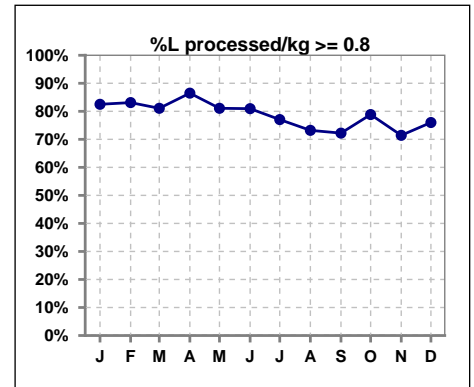
	Jan	Feb	Mar	Apr	May	Jun	Jul	Aug	Sep	Oct	Nov	Dec
# URR w/ 3tx/wk	71	71	66	66	65	57	57	54	52	47	44	46
# URR>=65 w/ 3tx/wk	66	65	57	62	59	53	51	46	46	41	40	45
Pop. Mean	75	74	74	75	74	74	73	71	72	74	74	75
Std. Deviation	7.08	7.22	8.98	7.52	7.57	7.11	8.32	8.28	11.11	7.30	6.86	7.01
% URR>=65 w/ 3tx/wk	93%	92%	86%	94%	91%	93%	89%	85%	88%	87%	91%	98%



	Jan	Feb	Mar	Apr	May	Jun	Jul	Aug	Sep	Oct	Nov	Dec
# Pre Sys BP	80	77	74	74	74	64	63	57	56	53	50	51
# Pre Sys BP <= 165	70	66	64	65	64	56	55	48	51	44	41	39
Pop. Mean	145	147	147	147	147	148	144	146	142	148	149	150
Std. Deviation	17.2	17.5	16.5	17.6	16.8	17.4	19.4	20.4	19.9	18.1	18.7	17.9
% Pre Sys BP <=165	86%	84%	85%	86%	86%	84%	86%	81%	86%	81%	78%	76%



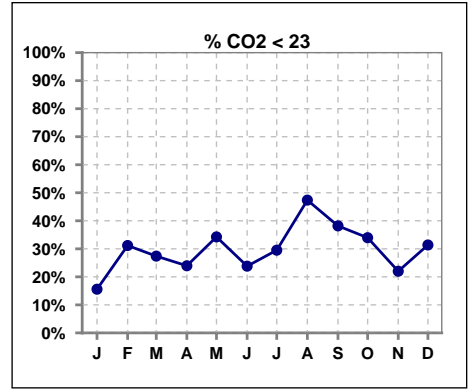
	Jan	Feb	Mar	Apr	May	Jun	Jul	Aug	Sep	Oct	Nov	Dec
# L processed/kg	80	77	74	74	74	63	61	56	54	52	49	50
# L processed/kg>=0.8	66	64	60	64	60	51	47	41	39	41	35	38
Pop. Mean	1	1	1	1	1	1	1	1	1	1	1	1
Std. Deviation	0.3	0.3	0.3	0.3	0.3	0.3	0.3	0.3	0.3	0.3	0.3	0.3
% L processed/kg>=0.8	83%	83%	81%	86%	81%	81%	77%	73%	72%	79%	71%	76%



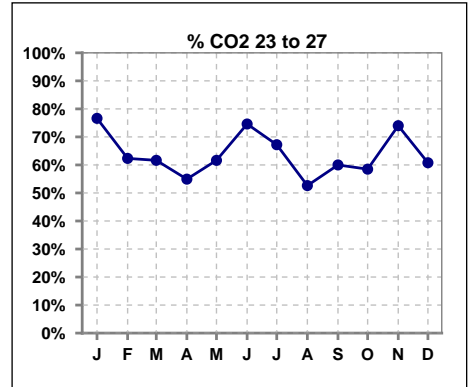
Methodology: a) All labs for 'Adequacy of Dialysis', 'Nutrition', 'Osteodystrophy', 'Anemia' and 'Diabetes' based on last value of month; b) BP's and #L processed are average of all values for month; c) Access data takes last access of month; d) Values for SGA and 'Infection Control' use most recent result.

**I. ADEQUACY OF DIALYSIS - CONT.**

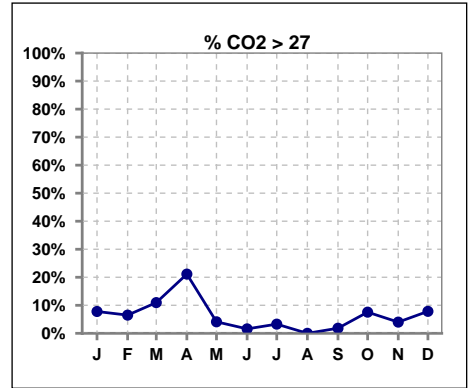
	Jan	Feb	Mar	Apr	May	Jun	Jul	Aug	Sep	Oct	Nov	Dec
# CO2	77	77	73	71	73	63	61	57	55	53	50	51
# CO2 < 23	12	24	20	17	25	15	18	27	21	18	11	16
Pop. Mean	25	23	24	25	23	24	24	23	23	24	24	24
Std. Deviation	2.62	3.40	2.96	3.50	2.44	2.64	2.98	2.35	2.40	2.87	2.65	3.09
% CO2 < 23	16%	31%	27%	24%	34%	24%	30%	47%	38%	34%	22%	31%



	Jan	Feb	Mar	Apr	May	Jun	Jul	Aug	Sep	Oct	Nov	Dec
# CO2	77	77	73	71	73	63	61	57	55	53	50	51
# CO2 23 to 27	59	48	45	39	45	47	41	30	33	31	37	31
Pop. Mean	25	23	24	25	23	24	24	23	23	24	24	24
Std. Deviation	2.62	3.40	2.96	3.50	2.44	2.64	2.98	2.35	2.40	2.87	2.65	3.09
% CO2 23 to 27	77%	62%	62%	55%	62%	75%	67%	53%	60%	58%	74%	61%



	Jan	Feb	Mar	Apr	May	Jun	Jul	Aug	Sep	Oct	Nov	Dec
# CO2	77	77	73	71	73	63	61	57	55	53	50	51
# CO2 > 27	6	5	8	15	3	1	2	0	1	4	2	4
Pop. Mean	25	23	24	25	23	24	24	23	23	24	24	24
Std. Deviation	2.62	3.40	2.96	3.50	2.44	2.64	2.98	2.35	2.40	2.87	2.65	3.09
% CO2 > 27	8%	6%	11%	21%	4%	2%	3%	0%	2%	8%	4%	8%

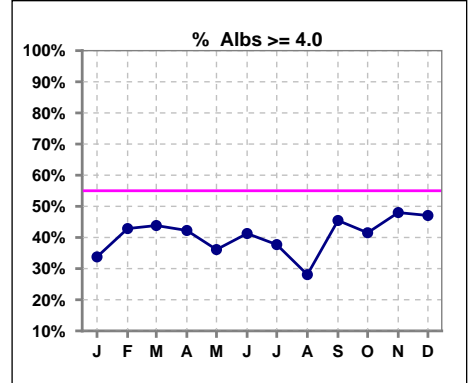


Methodology: a) All labs for 'Adequacy of Dialysis', 'Nutrition', 'Osteodystrophy', 'Anemia' and 'Diabetes' based on last value of month; b) BP's and #L processed are average of all values for month; c) Access data takes last access of month; d) Values for SGA and 'Infection Control' use most recent result.

\*Albumin values use BCG method - as of July 2001

**II. NUTRITION**

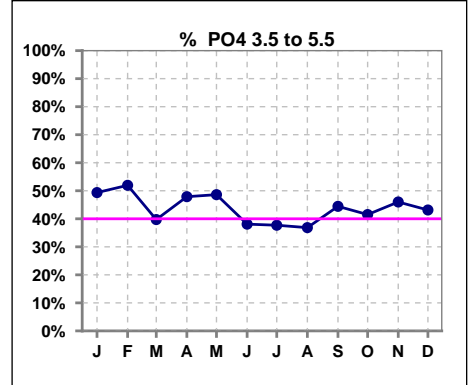
	Jan	Feb	Mar	Apr	May	Jun	Jul	Aug	Sep	Oct	Nov	Dec
# Albumin	77	77	73	71	72	63	61	57	55	53	50	51
# Albumin >= 4.0	26	33	32	30	26	26	23	16	25	22	24	24
Pop. Mean	3.7	3.8	3.7	3.7	3.7	3.8	3.8	3.6	3.7	3.7	3.8	3.8
Std. Deviation	0.50	0.55	0.57	0.52	0.51	0.56	0.46	0.53	0.52	0.46	0.49	0.50
% Alb >= 4.0	34%	43%	44%	42%	36%	41%	38%	28%	45%	42%	48%	47%



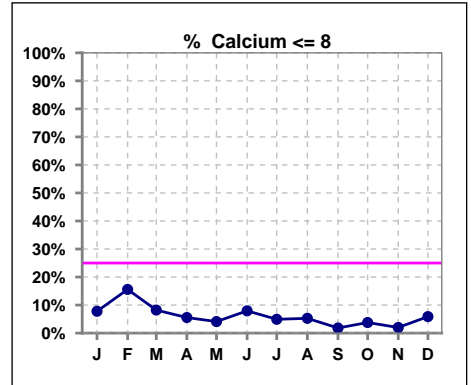
Lab methodology for PTH changed January 2012

**III. OSTEODYSTROPHY**

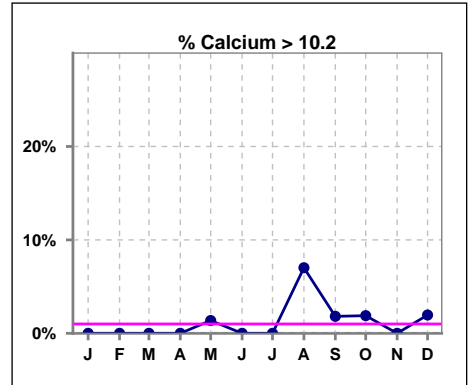
	Jan	Feb	Mar	Apr	May	Jun	Jul	Aug	Sep	Oct	Nov	Dec
# PO4	77	77	73	71	72	63	61	57	54	53	50	51
# PO4 3.5 to 5.5	38	40	29	34	35	24	23	21	24	22	23	22
Pop. Mean	5.8	5.9	6.2	5.9	5.8	5.8	5.8	6.1	6.1	6.0	6.1	5.9
Std. Deviation	1.83	1.89	1.88	1.89	1.98	1.94	2.11	1.98	2.09	1.95	1.94	1.54
% PO4 3.5 to 5.5	49%	52%	40%	48%	49%	38%	38%	37%	44%	42%	46%	43%



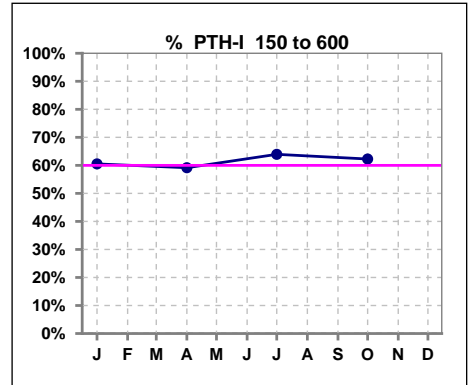
	Jan	Feb	Mar	Apr	May	Jun	Jul	Aug	Sep	Oct	Nov	Dec
# Calcium	77	77	73	72	73	63	61	57	55	53	50	51
# Calcium <= 8	6	12	6	4	3	5	3	3	1	2	1	3
Pop. Mean	9.1	9.0	9.1	9.1	9.2	9.2	9.3	9.1	9.3	9.3	9.2	9.2
Std. Deviation	0.73	0.83	0.73	0.66	0.64	0.62	0.61	0.82	0.64	0.62	0.62	0.61
% Calcium <= 8	8%	16%	8%	6%	4%	8%	5%	5%	2%	4%	2%	6%



	Jan	Feb	Mar	Apr	May	Jun	Jul	Aug	Sep	Oct	Nov	Dec
# Calcium	77	77	73	72	73	63	61	57	55	53	50	51
# Calcium > 10.2	0	0	0	0	1	0	0	4	1	1	0	1
Pop. Mean	9.1	9.0	9.1	9.1	9.2	9.2	9.3	9.1	9.3	9.3	9.2	9.2
Std. Deviation	0.73	0.83	0.73	0.66	0.64	0.62	0.61	0.82	0.64	0.62	0.62	0.61
% Calcium > 10.2	0%	0%	0%	0%	1%	0%	0%	7%	2%	2%	0%	2%



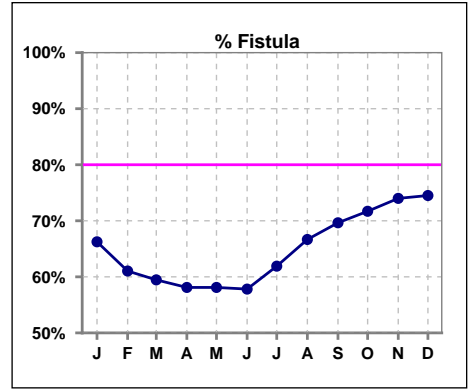
	Jan	Feb	Mar	Apr	May	Jun	Jul	Aug	Sep	Oct	Nov	Dec
# PTH-I	76			71			61			53		
# PTH-I 150 to 600	46			42			39			33		
Pop. Mean	491			505			481			468		
Std. Deviation	416			425			442			371		
% PTH-I 150 to 600	61%			59%			64%			62%		



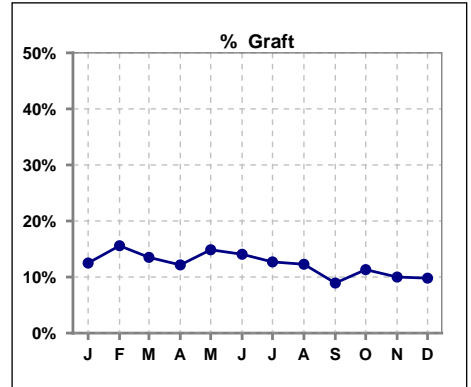
Methodology: a) All labs for 'Adequacy of Dialysis', 'Nutrition', 'Osteodystrophy', 'Anemia' and 'Diabetes' based on last value of month; b) BP's and #L processed are average of all values for month; c) Access data takes last access of month; d) Values for SGA and 'Infection Control' use most recent result.

**IV. ACCESS**

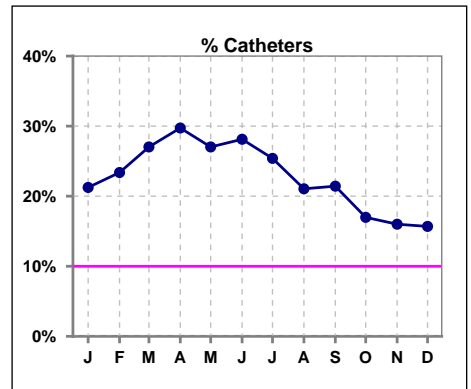
	Jan	Feb	Mar	Apr	May	Jun	Jul	Aug	Sep	Oct	Nov	Dec
# Access	80	77	74	74	74	64	63	57	56	53	50	51
# Fistula	53	47	44	43	43	37	39	38	39	38	37	38
% Fistula	66%	61%	59%	58%	58%	58%	62%	67%	70%	72%	74%	75%



	Jan	Feb	Mar	Apr	May	Jun	Jul	Aug	Sep	Oct	Nov	Dec
# Access	80	77	74	74	74	64	63	57	56	53	50	51
# Graft	10	12	10	9	11	9	8	7	5	6	5	5
% Graft	13%	16%	14%	12%	15%	14%	13%	12%	9%	11%	10%	10%



	Jan	Feb	Mar	Apr	May	Jun	Jul	Aug	Sep	Oct	Nov	Dec
# Access	80	77	74	74	74	64	63	57	56	53	50	51
# Catheters	17	18	20	22	20	18	16	12	12	9	8	8
% Catheters	21%	23%	27%	30%	27%	28%	25%	21%	21%	17%	16%	16%



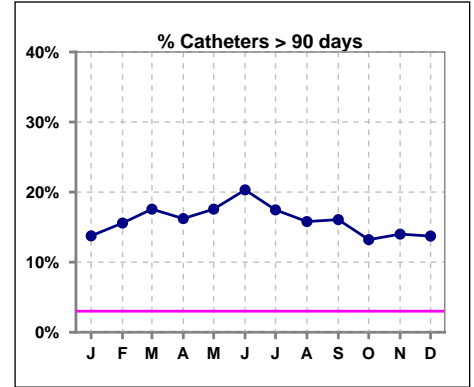
Methodology: a) All labs for 'Adequacy of Dialysis', 'Nutrition', 'Osteodystrophy', 'Anemia' and 'Diabetes' based on last value of month; b) BP's and #L processed are average of all values for month; c) Access data takes last access of month; d) Values for SGA and 'Infection Control' use most recent result.

**IV. ACCESS - CONT.**

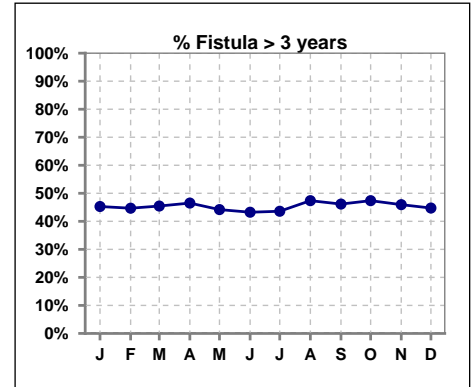
**Catheters > 90 days**

	Jan	Feb	Mar	Apr	May	Jun	Jul	Aug	Sep	Oct	Nov	Dec
# Access	80	77	74	74	74	64	63	57	56	53	50	51
# Catheters	11	12	13	12	13	13	11	9	9	7	7	7
<b>% Catheters</b>	<b>14%</b>	<b>16%</b>	<b>18%</b>	<b>16%</b>	<b>18%</b>	<b>20%</b>	<b>17%</b>	<b>16%</b>	<b>16%</b>	<b>13%</b>	<b>14%</b>	<b>14%</b>

Definition: Catheter in use on last treatment of the month



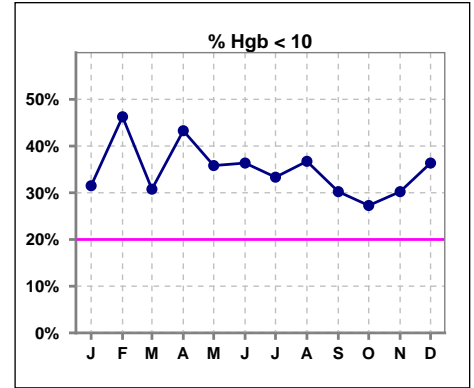
	Jan	Feb	Mar	Apr	May	Jun	Jul	Aug	Sep	Oct	Nov	Dec
# Fistula	53	47	44	43	43	37	39	38	39	38	37	38
# Fistula > 3 yrs	24	21	20	20	19	16	17	18	18	18	17	17
<b>% Fistula &gt; 3 yrs</b>	<b>45%</b>	<b>45%</b>	<b>45%</b>	<b>47%</b>	<b>44%</b>	<b>43%</b>	<b>44%</b>	<b>47%</b>	<b>46%</b>	<b>47%</b>	<b>46%</b>	<b>45%</b>



**V. ANEMIA**

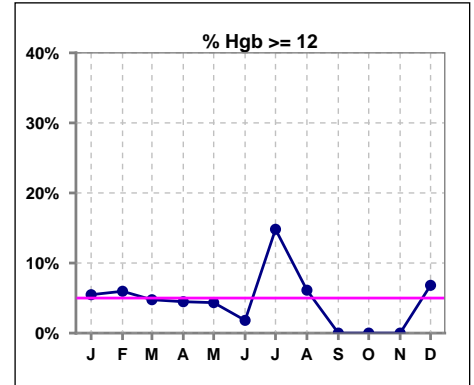
	Jan	Feb	Mar	Apr	May	Jun	Jul	Aug	Sep	Oct	Nov	Dec
# Hgb	73	67	65	67	67	55	54	49	43	44	43	44
# Hgb < 10	23	31	20	29	24	20	18	18	13	12	13	16
Pop. Mean	10.3	10.1	10.3	10.1	10.2	10.2	10.6	10.5	10.2	10.1	10.4	10.4
Std. Deviation	1.4	1.3	1.2	1.4	1.2	1.3	1.5	1.4	1.2	1.1	1.1	1.3
% Hgb < 10	32%	46%	31%	43%	36%	36%	33%	37%	30%	27%	30%	36%

Note: Excludes patients who received no ESA in month.



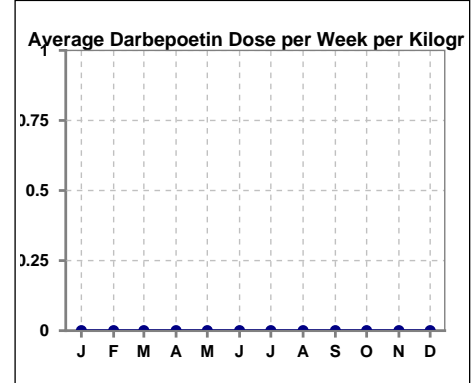
	Jan	Feb	Mar	Apr	May	Jun	Jul	Aug	Sep	Oct	Nov	Dec
# Hgb	73	67	63	67	69	55	54	49	43	44	43	44
# Hgb >= 12	4	4	3	3	3	1	8	3	0	0	0	3
Pop. Mean	10.3	10.1	10.3	10.1	10.3	10.2	10.6	10.5	10.2	10.1	10.4	10.4
Std. Deviation	1.4	1.3	1.2	1.4	1.2	1.3	1.5	1.4	1.2	1.1	1.1	1.3
% Hgb >= 12	5%	6%	5%	4%	4%	2%	15%	6%	0%	0%	0%	7%

Note: Excludes patients who received no ESA in month.



**Average Darbepoetin Dose per Week per Kilogram**

	Jan	Feb	Mar	Apr	May	Jun	Jul	Aug	Sep	Oct	Nov	Dec
# Average Darbepoetin	0	0	0	0	0	0	0	0	0	0	0	0

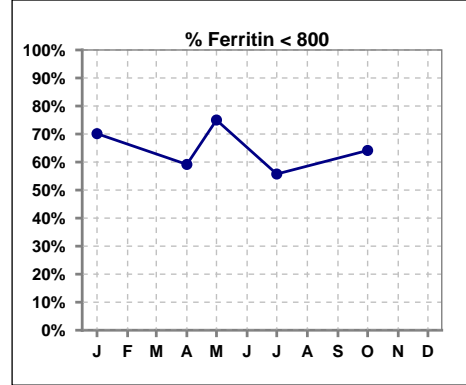




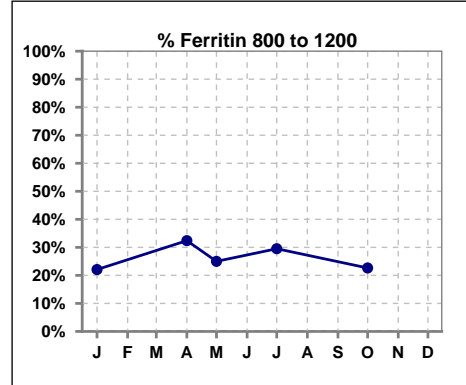
**V. ANEMIA - CONT.**

**Iron Profile**

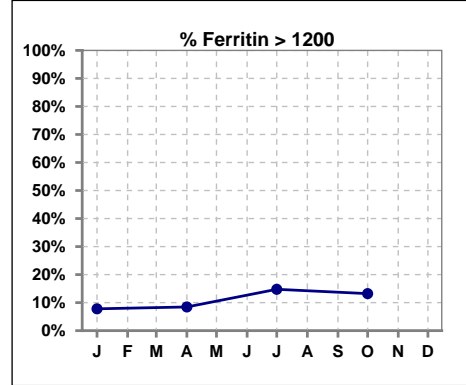
	Jan	Feb	Mar	Apr	May	Jun	Jul	Aug	Sep	Oct	Nov	Dec
# Ferritin	77			71	8		61			53		
# Ferritin < 800	54			42	6		34			34		
Pop. Mean	671			695	530		841			714		
Std. Deviation	373			390	352		712			405		
<b>% Ferritin &lt; 800</b>	<b>70%</b>			<b>59%</b>	<b>75%</b>		<b>56%</b>			<b>64%</b>		



	Jan	Feb	Mar	Apr	May	Jun	Jul	Aug	Sep	Oct	Nov	Dec
# Ferritin	77			71	8		61			53		
# Ferritin 800 to 1200	17			23	2		18			12		
Pop. Mean	671			695	530		841			714		
Std. Deviation	373			390	352		712			405		
<b>% Ferritin 800 to 1200</b>	<b>22%</b>			<b>32%</b>	<b>25%</b>		<b>30%</b>			<b>23%</b>		

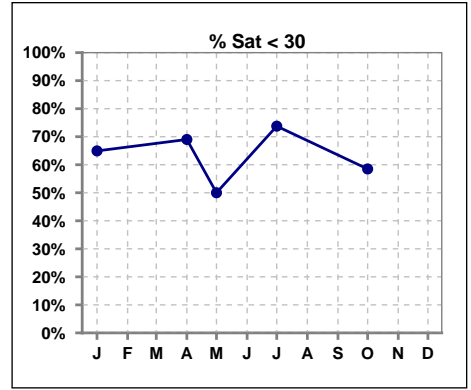


	Jan	Feb	Mar	Apr	May	Jun	Jul	Aug	Sep	Oct	Nov	Dec
# Ferritin	77			71	8		61			53		
# Ferritin > 1200	6			6			9			7		
Pop. Mean	671			695	530		841			714		
Std. Deviation	373			390	352		712			405		
<b>% Ferritin &gt; 1200</b>	<b>8%</b>			<b>8%</b>			<b>15%</b>			<b>13%</b>		

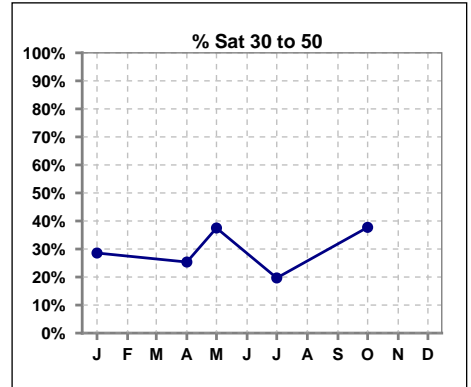


**V. ANEMIA - CONT.**

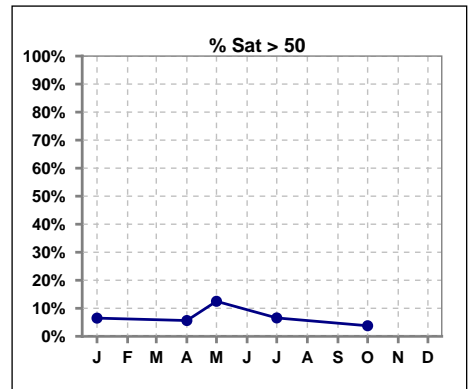
	Jan	Feb	Mar	Apr	May	Jun	Jul	Aug	Sep	Oct	Nov	Dec
# % Sat	77			71	8		61			53		
# % Sat < 30	50			49	4		45			31		
Pop. Mean	28			26	30		28			29		
Std. Deviation	16			15	22		16			10		
<b>% % Sat &lt; 30</b>	<b>65%</b>			<b>69%</b>	<b>50%</b>		<b>74%</b>			<b>58%</b>		



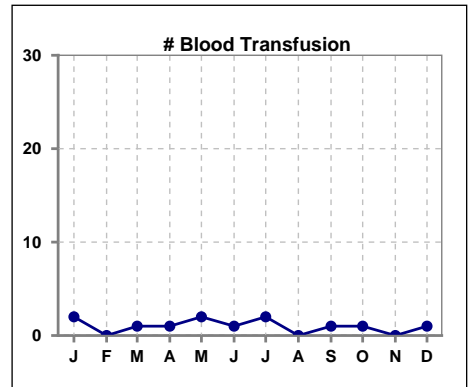
	Jan	Feb	Mar	Apr	May	Jun	Jul	Aug	Sep	Oct	Nov	Dec
# % Sat	77			71	8		61			53		
# % Sat 30 to 50	22			18	3		12			20		
Pop. Mean	28			26	30		28			29		
Std. Deviation	16			15	22		16			10		
<b>% % Sat 30 to 50</b>	<b>29%</b>			<b>25%</b>	<b>38%</b>		<b>20%</b>			<b>38%</b>		



	Jan	Feb	Mar	Apr	May	Jun	Jul	Aug	Sep	Oct	Nov	Dec
# % Sat	77			71	8		61			53		
# % Sat > 50	5			4	1		4			2		
Pop. Mean	28			26	30		28			29		
Std. Deviation	16			15	22		16			10		
<b>% % Sat &gt; 50</b>	<b>6%</b>			<b>6%</b>	<b>13%</b>		<b>7%</b>			<b>4%</b>		



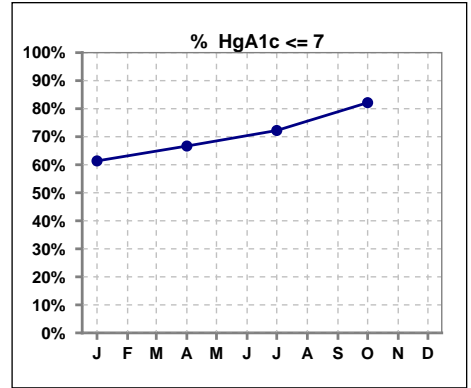
	Jan	Feb	Mar	Apr	May	Jun	Jul	Aug	Sep	Oct	Nov	Dec
# Patient	82	79	77	74	75	66	63	59	56	53	50	51
# Blood Transfusion	2	0	1	1	2	1	2	0	1	1	0	1



Methodology: a) All labs for 'Adequacy of Dialysis', 'Nutrition', 'Osteodystrophy', 'Anemia' and 'Diabetes' based on last value of month; b) BP's and #L processed are average of all values for month; c) Access data takes last access of month; d) Values for SGA and 'Infection Control' use most recent result.

**VI. Diabetes**

	Jan	Feb	Mar	Apr	May	Jun	Jul	Aug	Sep	Oct	Nov	Dec
# HgA1c	44			45			36			28		
# HgA1c <= 7	27			30			26			23		
Pop. Mean	6.6			6.8			6.7			6.3		
Std. Deviation	1.42			1.36			1.69			0.97		
<b>% HgA1c &lt;= 7</b>	<b>61%</b>			<b>67%</b>			<b>72%</b>			<b>82%</b>		

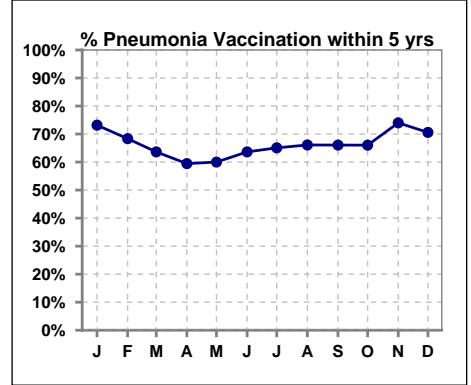


Methodology: a) All labs for 'Adequacy of Dialysis', 'Nutrition', 'Osteodystrophy', 'Anemia' and 'Diabetes' based on last value of month; b) BP's and #L processed are average of all values for month; c) Access data takes last access of month; d) Values for SGA and 'Infection Control' use most recent result.

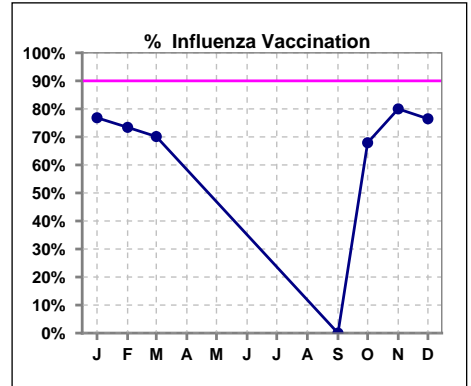
**VII. Infection Control**

**Pneumonia vaccination within the past five years**

	Jan	Feb	Mar	Apr	May	Jun	Jul	Aug	Sep	Oct	Nov	Dec
<b># Patient</b>	82	79	77	74	75	66	63	59	56	53	50	51
<b># Pneumonia</b>	60	54	49	44	45	42	41	39	37	35	37	36
<b>% Pneumonia</b>	73%	68%	64%	59%	60%	64%	65%	66%	66%	66%	74%	71%



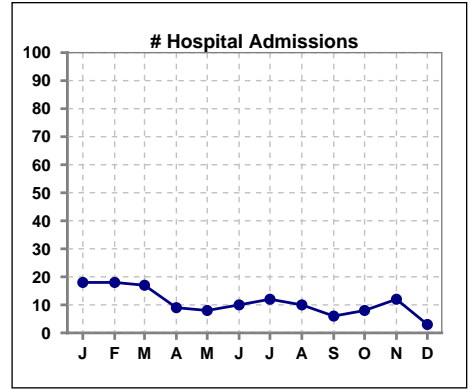
	Jan	Feb	Mar	Apr	May	Jun	Jul	Aug	Sep	Oct	Nov	Dec
<b># Patient</b>	82	79	77						56	53	50	51
<b># Influenza</b>	63	58	54						0	36	40	39
<b>% Influenza</b>	77%	73%	70%						0%	68%	80%	76%



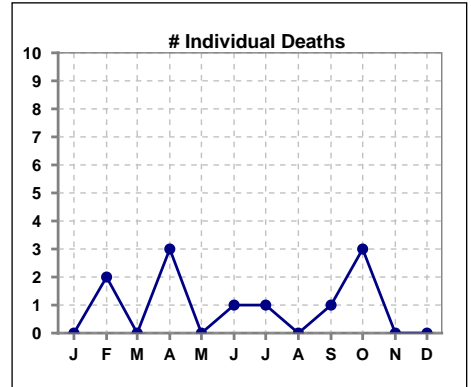
Methodology: a) All labs for 'Adequacy of Dialysis', 'Nutrition', 'Osteodystrophy', 'Anemia' and 'Diabetes' based on last value of month; b) BP's and #L processed are average of all values for month; c) Access data takes last access of month; d) Values for SGA and 'Infection Control' use most recent result.

**VIII. Outcome measures**

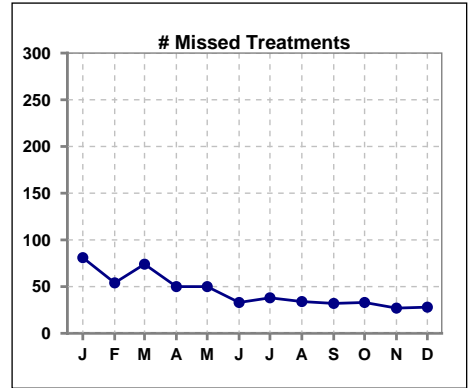
	Jan	Feb	Mar	Apr	May	Jun	Jul	Aug	Sep	Oct	Nov	Dec
<b># Patient</b>	82	79	77	74	75	66	63	59	56	53	50	51
<b># Hospital Admissions</b>	18	18	17	9	8	10	12	10	6	8	12	3



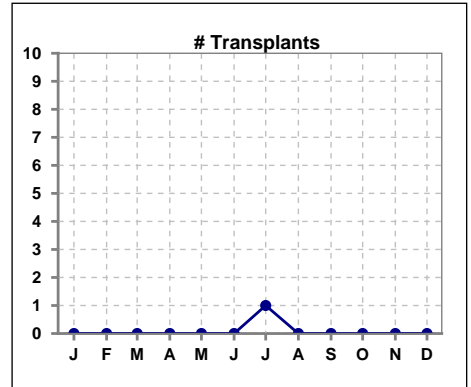
	Jan	Feb	Mar	Apr	May	Jun	Jul	Aug	Sep	Oct	Nov	Dec
<b># Patient</b>	82	79	77	74	75	66	63	59	56	53	50	51
<b># Individual Deaths</b>	0	2	0	3	0	1	1	0	1	3	0	0



	Jan	Feb	Mar	Apr	May	Jun	Jul	Aug	Sep	Oct	Nov	Dec
<b># Patient</b>	82	79	77	74	75	66	63	59	56	53	50	51
<b># Missed Treatments</b>	81	54	74	50	50	33	38	34	32	33	27	28



	Jan	Feb	Mar	Apr	May	Jun	Jul	Aug	Sep	Oct	Nov	Dec
<b># Patient</b>	82	79	77	74	75	66	63	59	56	53	50	51
<b># Transplants</b>	0	0	0	0	0	0	1	0	0	0	0	0



Methodology: a) All labs for 'Adequacy of Dialysis', 'Nutrition', 'Osteodystrophy', 'Anemia' and 'Diabetes' based on last value of month; b) BP's and #L processed are average of all values for month; c) Access data takes last access of month; d) Values for SGA and 'Infection Control' use most recent result.