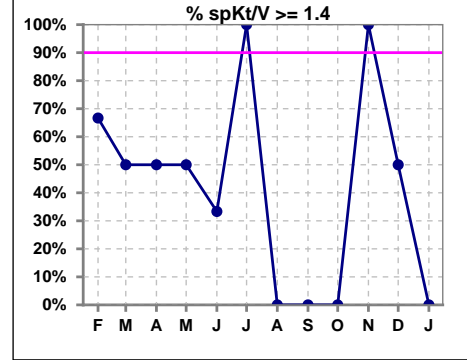
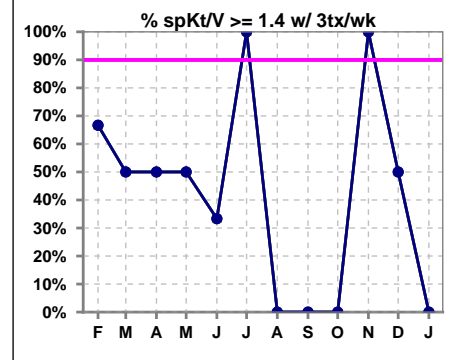


## I. ADEQUACY OF DIALYSIS

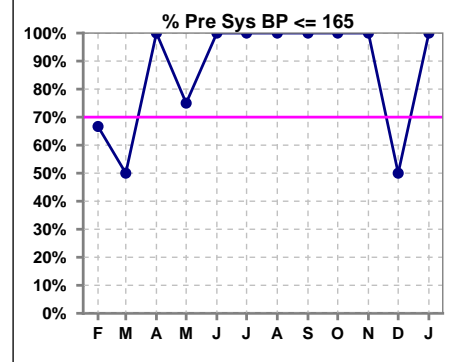
	Feb	Mar	Apr	May	Jun	Jul	Aug	Sep	Oct	Nov	Dec	Jan
# spKt/V	3	2	2	4	3	1	2	2	3	3	2	1
# spKt/V >= 1.4	2	1	1	2	1	1	0	0	0	3	1	0
Pop. Mean	1.92	1.72	1.43	1.53	1.42	1.70	1.29	1.22	1.28	1.56	1.35	1.37
Std. Deviation	0.64	0.62	0.30	0.29	0.27	0	0.15	0.24	0.03	0.12	0.12	0
% spKt/V >= 1.4	67%	50%	50%	50%	33%	100%	0%	0%	0%	100%	50%	0%
% spKt/V >= 1.2	100%	100%	100%	100%	100%	100%	50%	50%	100%	100%	100%	100%



	Feb	Mar	Apr	May	Jun	Jul	Aug	Sep	Oct	Nov	Dec	Jan
# spKt/V w/ 3tx/wk	3	2	2	4	3	1	2	2	3	3	2	1
# spKt/V >= 1.4 w/3tx/wk	2	1	1	2	1	1	0	0	0	3	1	0
Pop. Mean	1.92	1.72	1.43	1.53	1.42	1.70	1.29	1.22	1.28	1.56	1.35	1.37
Std. Deviation	0.64	0.62	0.30	0.29	0.27	0	0.15	0.24	0.03	0.12	0.12	0
% spKt/V >= 1.4 w/3tx/wk	67%	50%	50%	50%	33%	100%	0%	0%	0%	100%	50%	0%



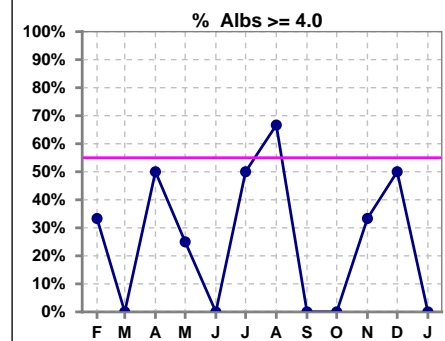
	Feb	Mar	Apr	May	Jun	Jul	Aug	Sep	Oct	Nov	Dec	Jan
# Pre Sys BP	3	2	2	4	4	2	3	2	3	3	2	1
# Pre Sys BP <= 165	2	1	2	3	4	2	3	2	3	3	1	1
Pop. Mean	153	158	145	139	145	137	124	135	143	155	154	139
Std. Deviation	18.7	21.9	18.4	20.6	12.7	17.0	16.7	9.9	16.1	7.5	19.8	0
% Pre Sys BP <= 165	67%	50%	100%	75%	100%	100%	100%	100%	100%	100%	50%	100%



\*Albumin values use BCG method - as of July 2001

## II. NUTRITION

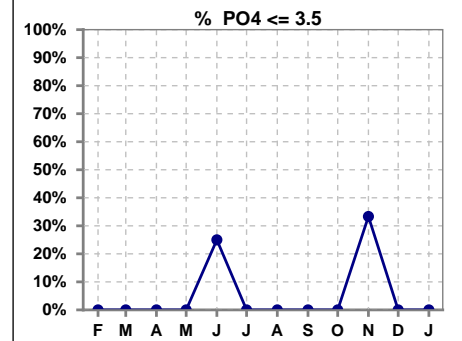
	Feb	Mar	Apr	May	Jun	Jul	Aug	Sep	Oct	Nov	Dec	Jan
# Albumin	3	2	2	4	4	2	3	2	3	3	2	1
# Albumin >= 4.0	1	0	1	1	0	1	2	0	0	1	1	0
Pop. Mean	3.9	3.6	3.8	3.8	3.7	4.1	4.0	3.7	3.5	3.7	3.9	3.8
Std. Deviation	0.92	0	0.42	0.24	0.17	0.21	0.21	0	0.38	0.47	0.42	0
% Alb >= 4.0	33%	0%	50%	25%	0%	50%	67%	0%	0%	33%	50%	0%



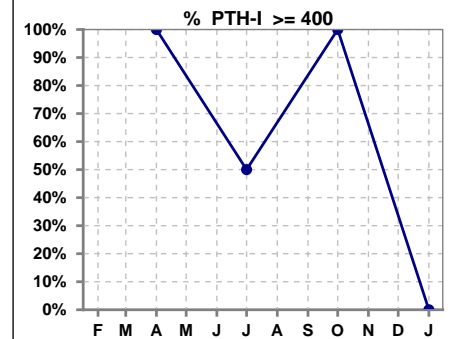
Lab methodology for PTH changed January 2012

### III. OSTEODYSTROPHY

	Feb	Mar	Apr	May	Jun	Jul	Aug	Sep	Oct	Nov	Dec	Jan
# PO4	3	2	2	4	4	2	3	2	3	3	2	1
# PO4 <= 3.5	0	0	0	0	1	0	0	0	0	1	0	0
Pop. Mean	6.5	7.7	6.9	5.4	5.1	5.2	5.1	5.3	5.5	6.0	7.5	4.7
Std. Deviation	1.19	1.48	0.64	0.68	1.26	1.34	0.10	0.64	1.07	3.35	0.07	0
% PO4 <= 3.5	0%	0%	0%	0%	25%	0%	0%	0%	0%	33%	0%	0%

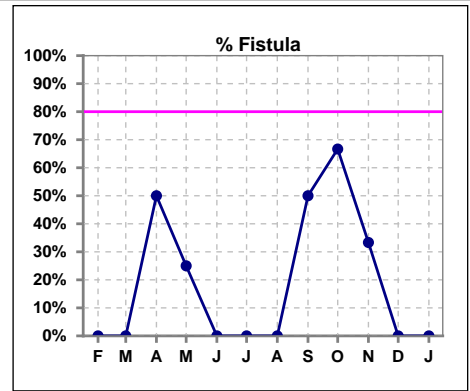


	Feb	Mar	Apr	May	Jun	Jul	Aug	Sep	Oct	Nov	Dec	Jan
# PTH-I			2			2			3			1
# PTH-I >= 400			2			1			3			0
Pop. Mean			785			292			582			354
Std. Deviation			84			212			182			0
% PTH-I >= 400			100%			50%			100%			0%

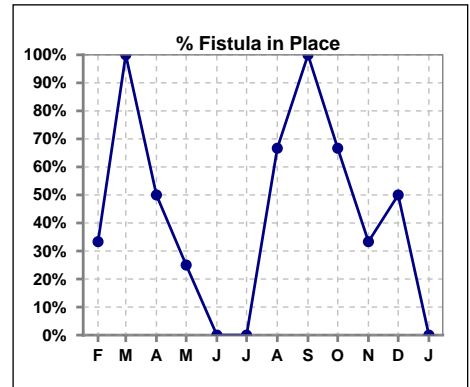


#### IV. ACCESS

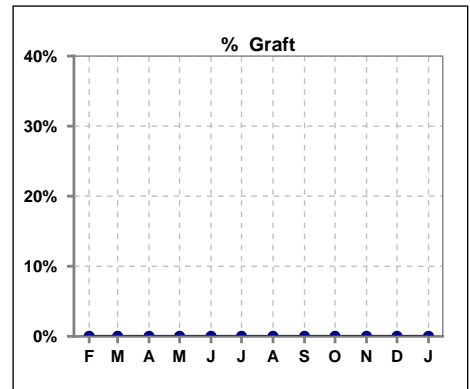
	Feb	Mar	Apr	May	Jun	Jul	Aug	Sep	Oct	Nov	Dec	Jan
# Access	3	2	2	4	4	2	3	2	3	3	2	1
# Fistula	0	0	1	1	0	0	0	1	2	1	0	0
% Fistula	0%	0%	50%	25%	0%	0%	0%	50%	67%	33%	0%	0%



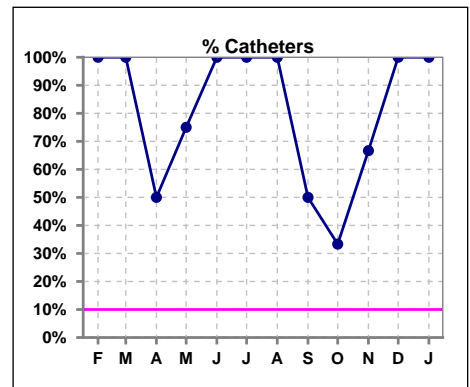
	Feb	Mar	Apr	May	Jun	Jul	Aug	Sep	Oct	Nov	Dec	Jan
# Patient	3	2	2	4	4	2	3	2	3	3	2	1
# Fistula in Place	1	2	1	1	0	0	2	2	2	1	1	0
% Fistula in Place	33%	100%	50%	25%	0%	0%	67%	100%	67%	33%	50%	0%



	Feb	Mar	Apr	May	Jun	Jul	Aug	Sep	Oct	Nov	Dec	Jan
# Access	3	2	2	4	4	2	3	2	3	3	2	1
# Graft	0	0	0	0	0	0	0	0	0	0	0	0
% Graft	0%	0%	0%	0%	0%	0%	0%	0%	0%	0%	0%	0%

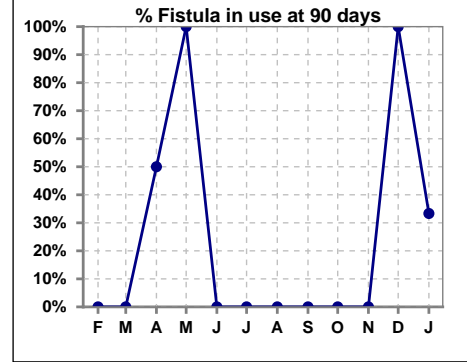


	Feb	Mar	Apr	May	Jun	Jul	Aug	Sep	Oct	Nov	Dec	Jan
# Access	3	2	2	4	4	2	3	2	3	3	2	1
# Catheters	3	2	1	3	4	2	3	1	1	2	2	1
% Catheters	100%	100%	50%	75%	100%	100%	100%	50%	33%	67%	100%	100%

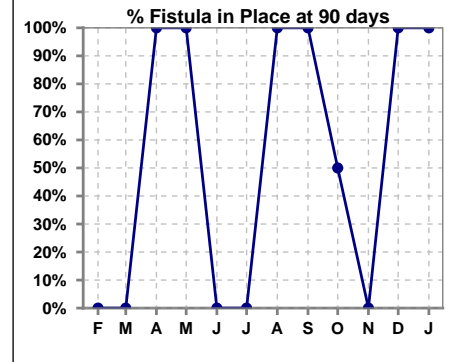


**IV. ACCESS - CONT. Access at 90 days for those patients that reached 90 days within the month.**

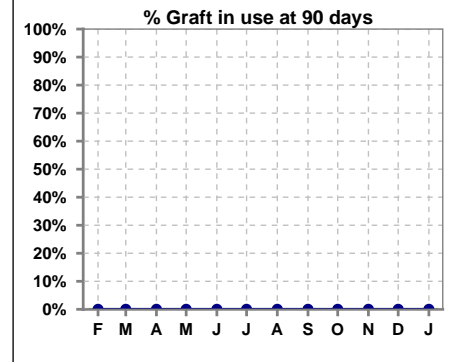
	Feb	Mar	Apr	May	Jun	Jul	Aug	Sep	Oct	Nov	Dec	Jan
# Patient	0	0	2	1	1	2	1	1	2	0	1	3
# Fistula in use	0	0	1	1	0	0	0	0	0	0	1	1
% Fistula in use	0%	0%	50%	100%	0%	0%	0%	0%	0%	0%	100%	33%



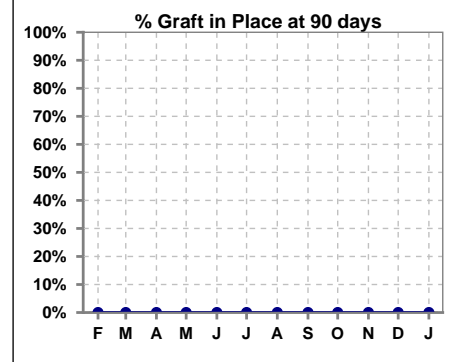
	Feb	Mar	Apr	May	Jun	Jul	Aug	Sep	Oct	Nov	Dec	Jan
# Patient	0	0	2	1	1	2	1	1	2	0	1	3
# Fistula in Place	0	0	2	1	0	0	1	1	1	0	1	3
% Fistula in Place	0%	0%	100%	100%	0%	0%	100%	100%	50%	0%	100%	100%



	Feb	Mar	Apr	May	Jun	Jul	Aug	Sep	Oct	Nov	Dec	Jan
# Patient	0	0	2	1	1	2	1	1	2	0	1	3
# Graft in use	0	0	0	0	0	0	0	0	0	0	0	0
% Graft in use	0%	0%	0%	0%	0%	0%	0%	0%	0%	0%	0%	0%

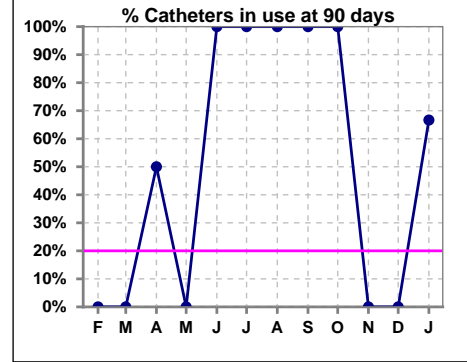


	Feb	Mar	Apr	May	Jun	Jul	Aug	Sep	Oct	Nov	Dec	Jan
# Patient	0	0	2	1	1	2	1	1	2	0	1	3
# Graft in Place	0	0	0	0	0	0	0	0	0	0	0	0
% Graft in Place	0%	0%	0%	0%	0%	0%	0%	0%	0%	0%	0%	0%

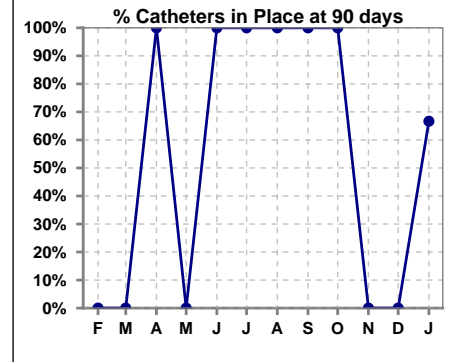


**IV. ACCESS - CONT. Access at 90 days for those patients that reached 90 days within the month.**

	Feb	Mar	Apr	May	Jun	Jul	Aug	Sep	Oct	Nov	Dec	Jan
# Patient	0	0	2	1	1	2	1	1	2	0	1	3
# Catheters in use	0	0	1	0	1	2	1	1	2	0	0	2
% Catheters in use	0%	0%	50%	0%	100%	100%	100%	100%	100%	0%	0%	67%

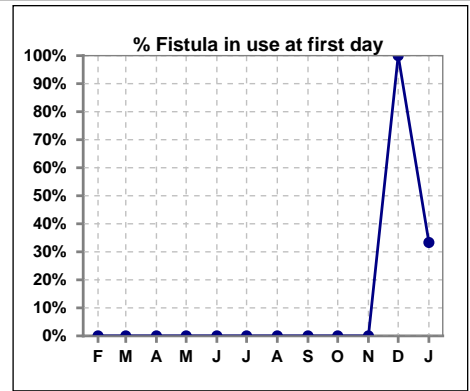


	Feb	Mar	Apr	May	Jun	Jul	Aug	Sep	Oct	Nov	Dec	Jan
# Patient	0	0	2	1	1	2	1	1	2	0	1	3
# Catheters in Place	0	0	2	0	1	2	1	1	2	0	0	2
% Catheters in Place	0%	0%	100%	0%	100%	100%	100%	100%	100%	0%	0%	67%

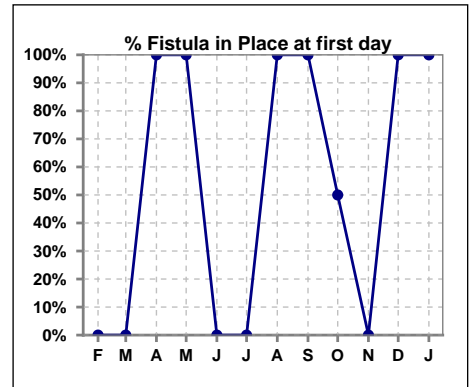


**IV. ACCESS - CONT. Access at first day for those patients that reached 90 days within the month.**

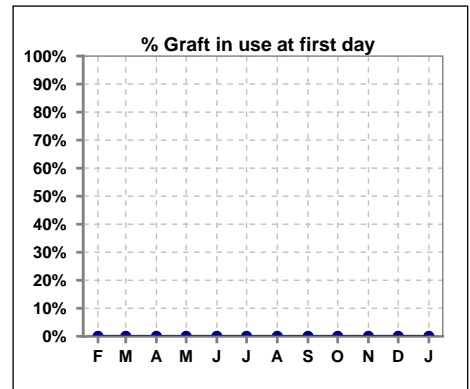
	Feb	Mar	Apr	May	Jun	Jul	Aug	Sep	Oct	Nov	Dec	Jan
# Patient	0	0	2	1	1	2	1	1	2	0	1	3
# Fistula in use	0	0	0	0	0	0	0	0	0	0	1	1
% Fistula in use	0%	0%	0%	0%	0%	0%	0%	0%	0%	0%	100%	33%



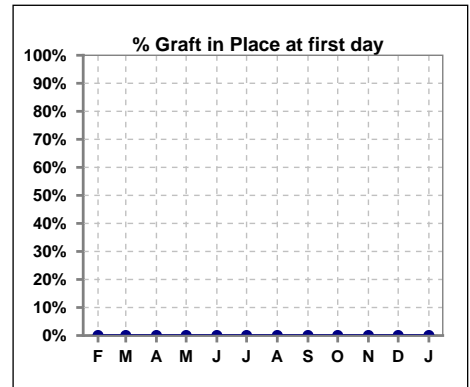
	Feb	Mar	Apr	May	Jun	Jul	Aug	Sep	Oct	Nov	Dec	Jan
# Patient	0	0	2	1	1	2	1	1	2	0	1	3
# Fistula in Place	0	0	2	1	0	0	1	1	1	0	1	3
% Fistula in Place	0%	0%	100%	100%	0%	0%	100%	100%	50%	0%	100%	100%



	Feb	Mar	Apr	May	Jun	Jul	Aug	Sep	Oct	Nov	Dec	Jan
# Patient	0	0	2	1	1	2	1	1	2	0	1	3
# Graft in use	0	0	0	0	0	0	0	0	0	0	0	0
% Graft in use	0%	0%	0%	0%	0%	0%	0%	0%	0%	0%	0%	0%

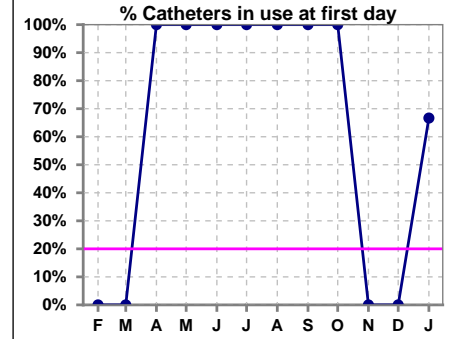


	Feb	Mar	Apr	May	Jun	Jul	Aug	Sep	Oct	Nov	Dec	Jan
# Patient	0	0	2	1	1	2	1	1	2	0	1	3
# Graft in Place	0	0	0	0	0	0	0	0	0	0	0	0
% Graft in Place	0%	0%	0%	0%	0%	0%	0%	0%	0%	0%	0%	0%

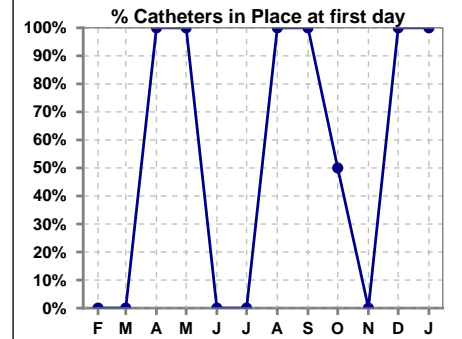


**IV. ACCESS - CONT. Access at first day for those patients that reached 90 days within the month.**

	Feb	Mar	Apr	May	Jun	Jul	Aug	Sep	Oct	Nov	Dec	Jan
# Patient	0	0	2	1	1	2	1	1	2	0	1	3
# Catheters in use	0	0	2	1	1	2	1	1	2	0	0	2
% Catheters in use	0%	0%	100%	100%	100%	100%	100%	100%	100%	0%	0%	67%



	Feb	Mar	Apr	May	Jun	Jul	Aug	Sep	Oct	Nov	Dec	Jan
# Patient	0	0	2	1	1	2	1	1	2	0	1	3
# Catheters in Place	0	0	2	1	0	0	1	1	1	0	1	3
% Catheters in Place	0%	0%	100%	100%	0%	0%	100%	100%	50%	0%	100%	100%

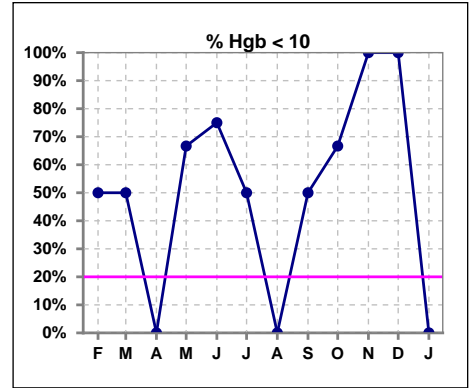




### V. ANEMIA

	Feb	Mar	Apr	May	Jun	Jul	Aug	Sep	Oct	Nov	Dec	Jan
# Hgb	2	2	1	3	4	2	2	2	3	2	2	0
# Hgb <= 10	1	1	0	2	3	1	0	1	2	2	2	0
Pop. Mean	10.3	10.2	11.5	9.5	9.8	10.2	11.5	10.2	9.4	8.3	8.9	0
Std. Deviation	1.7	1.1	0	2.4	0.3	1.3	0.1	2.0	2.0	0	0.1	0
% Hgb <= 10	50%	50%	0%	67%	75%	50%	0%	50%	67%	100%	100%	0%

Note: Excludes patients who received no ESA in month.



	Feb	Mar	Apr	May	Jun	Jul	Aug	Sep	Oct	Nov	Dec	Jan
# Hgb	2	2	1	3	4	2	2	2	3	2	2	0
# Hgb >= 12	0	0	0	0	0	0	0	0	0	0	0	0
Pop. Mean	10.3	10.2	11.5	9.5	9.8	10.2	11.5	10.2	9.4	8.3	8.9	0
Std. Deviation	1.7	1.1	0	2.4	0.3	1.3	0.1	2.0	2.0	0	0.1	0
% Hgb >= 12	0%	0%	0%	0%	0%	0%	0%	0%	0%	0%	0%	0%

Note: Excludes patients who received no ESA in month.

