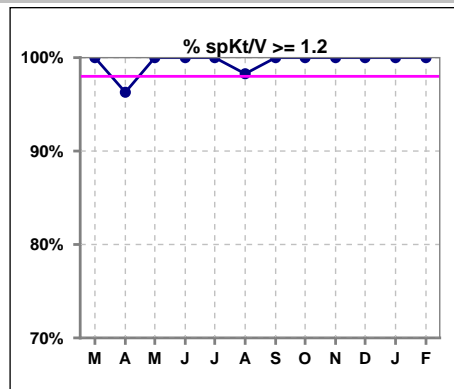
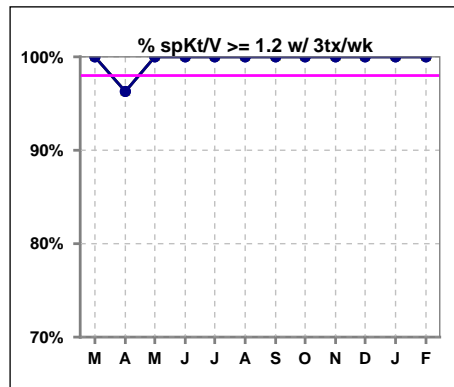


I. ADEQUACY OF DIALYSIS

	Mar	Apr	May	Jun	Jul	Aug	Sep	Oct	Nov	Dec	Jan	Feb
# spKt/V	52	54	58	56	57	58	56	57	58	56	58	55
# spKt/V >= 1.2	52	52	58	56	57	57	56	57	58	56	58	55
Pop. Mean	1.65	1.63	1.67	1.61	1.67	1.59	1.62	1.58	1.59	1.59	1.62	1.60
Std. Deviation	0.27	0.31	0.27	0.30	0.37	0.35	0.31	0.25	0.26	0.26	0.32	0.32
% spKt/V >= 1.2	100%	96%	100%	100%	100%	98%	100%	100%	100%	100%	100%	100%

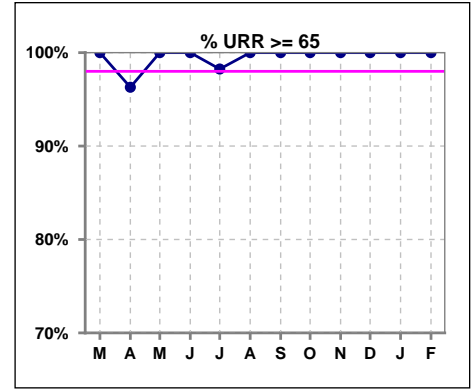


	Mar	Apr	May	Jun	Jul	Aug	Sep	Oct	Nov	Dec	Jan	Feb
# spKt/V w/ 3tx/wk	52	54	56	54	56	56	55	56	57	54	57	54
# spKt/V >= 1.2 w/3tx/wk	52	52	56	54	56	56	55	56	57	54	57	54
Pop. Mean	1.65	1.63	1.67	1.61	1.67	1.61	1.62	1.58	1.59	1.60	1.62	1.60
Std. Deviation	0.27	0.31	0.27	0.29	0.37	0.33	0.31	0.25	0.26	0.26	0.33	0.32
% >= 1.2 w/3tx/wk	100%	96%	100%	100%	100%	100%	100%	100%	100%	100%	100%	100%

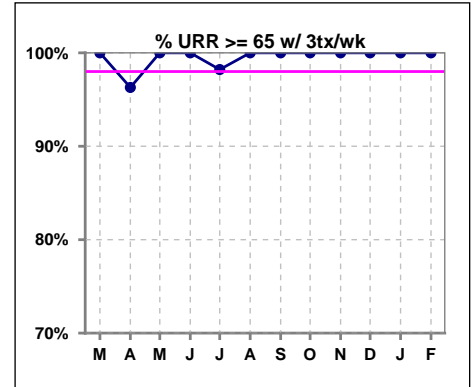


I. ADEQUACY OF DIALYSIS - CONT.

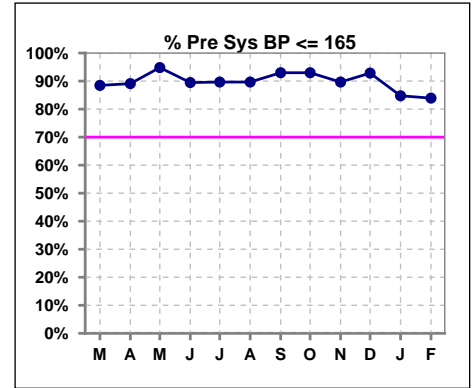
	Mar	Apr	May	Jun	Jul	Aug	Sep	Oct	Nov	Dec	Jan	Feb
# URR	52	54	58	56	57	58	57	57	58	56	59	56
# URR >= 65	52	52	58	56	56	58	57	57	58	56	59	56
Pop. Mean	76	75	76	75	76	75	75	74	75	75	75	75
Std. Deviation	5.35	5.86	4.92	5.34	6.16	6.07	5.54	5.01	4.95	5.07	5.44	4.98
% URR >= 65	100%	96%	100%	100%	98%	100%	100%	100%	100%	100%	100%	100%



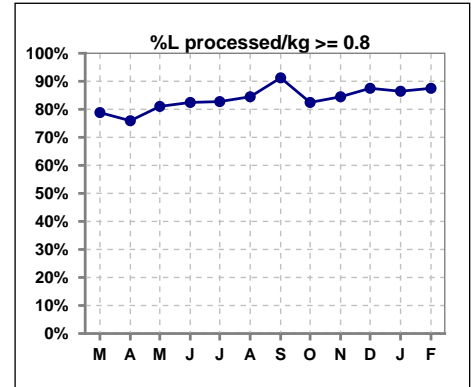
	Mar	Apr	May	Jun	Jul	Aug	Sep	Oct	Nov	Dec	Jan	Feb
# URR w/ 3tx/wk	52	54	56	54	56	56	55	56	57	54	57	54
# URR>=65 w/ 3tx/wk	52	52	56	54	55	56	55	56	57	54	57	54
Pop. Mean	76	75	76	75	76	75	75	75	75	75	75	75
Std. Deviation	5.35	5.86	4.97	5.26	6.14	6.02	5.62	5.03	4.98	5.13	5.53	5.07
% URR>=65 w/ 3tx/wk	100%	96%	100%	100%	98%	100%	100%	100%	100%	100%	100%	100%



	Mar	Apr	May	Jun	Jul	Aug	Sep	Oct	Nov	Dec	Jan	Feb
# Pre Sys BP	52	55	58	57	58	58	57	57	58	56	59	56
# Pre Sys BP <= 165	47	49	55	52	53	52	53	53	52	52	52	47
Pop. Mean	142	142	140	141	141	141	142	142	145	144	145	147
Std. Deviation	17.0	18.6	15.9	16.6	17.6	16.2	15.1	14.8	15.0	13.4	15.4	15.6
% Pre Sys BP <=165	88%	89%	95%	89%	90%	90%	93%	93%	90%	93%	85%	84%



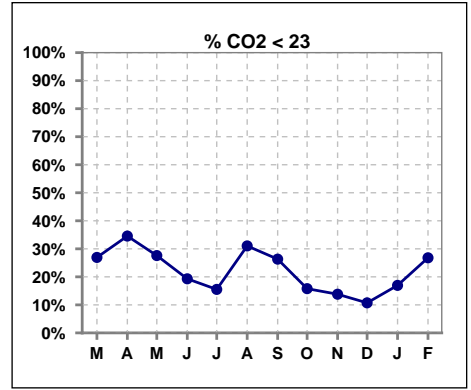
	Mar	Apr	May	Jun	Jul	Aug	Sep	Oct	Nov	Dec	Jan	Feb
# L processed/kg	52	54	58	57	58	58	57	57	58	56	59	56
# L processed/kg>=0.8	41	41	47	47	48	49	52	47	49	49	51	49
Pop. Mean	1	1	1	1	1	1	1	1	1	1	1	1
Std. Deviation	0.2	0.2	0.2	0.2	0.3	0.4	0.3	0.3	0.3	0.3	0.4	0.3
% L processed/kg>=0.8	79%	76%	81%	82%	83%	84%	91%	82%	84%	88%	86%	88%



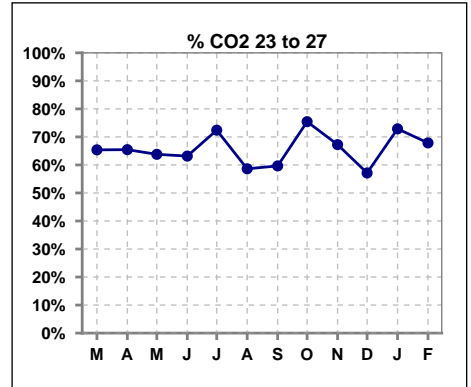
Methodology: a) All labs for 'Adequacy of Dialysis', 'Nutrition', 'Osteodystrophy', 'Anemia' and 'Diabetes' based on last value of month; b) BP's and #L processed are average of all values for month; c) Access data takes last access of month; d) Values for SGA and 'Infection Control' use most recent result.

I. ADEQUACY OF DIALYSIS - CONT.

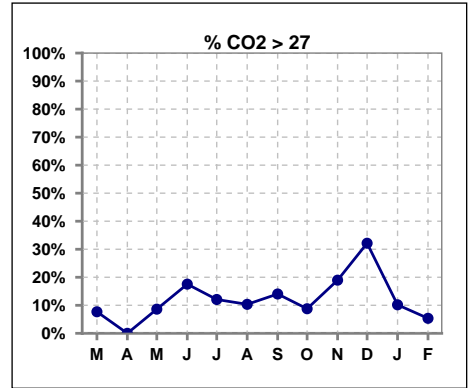
	Mar	Apr	May	Jun	Jul	Aug	Sep	Oct	Nov	Dec	Jan	Feb
# CO2	52	55	58	57	58	58	57	57	58	56	59	56
# CO2 < 23	14	19	16	11	9	18	15	9	8	6	10	15
Pop. Mean	24	23	24	25	25	24	24	24	25	26	25	24
Std. Deviation	2.43	2.56	2.61	3.19	3.08	2.96	2.93	2.48	2.96	2.87	2.44	2.49
% CO2 < 23	27%	35%	28%	19%	16%	31%	26%	16%	14%	11%	17%	27%



	Mar	Apr	May	Jun	Jul	Aug	Sep	Oct	Nov	Dec	Jan	Feb
# CO2	52	55	58	57	58	58	57	57	58	56	59	56
# CO2 23 to 27	34	36	37	36	42	34	34	43	39	32	43	38
Pop. Mean	24	23	24	25	25	24	24	24	25	26	25	24
Std. Deviation	2.43	2.56	2.61	3.19	3.08	2.96	2.93	2.48	2.96	2.87	2.44	2.49
% CO2 23 to 27	65%	65%	64%	63%	72%	59%	60%	75%	67%	57%	73%	68%



	Mar	Apr	May	Jun	Jul	Aug	Sep	Oct	Nov	Dec	Jan	Feb
# CO2	52	55	58	57	58	58	57	57	58	56	59	56
# CO2 > 27	4	0	5	10	7	6	8	5	11	18	6	3
Pop. Mean	24	23	24	25	25	24	24	24	25	26	25	24
Std. Deviation	2.43	2.56	2.61	3.19	3.08	2.96	2.93	2.48	2.96	2.87	2.44	2.49
% CO2 > 27	8%	0%	9%	18%	12%	10%	14%	9%	19%	32%	10%	5%

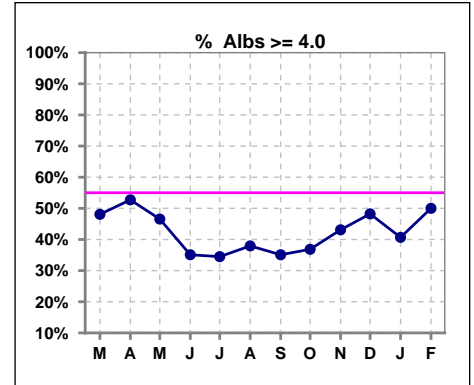


Methodology: a) All labs for 'Adequacy of Dialysis', 'Nutrition', 'Osteodystrophy', 'Anemia' and 'Diabetes' based on last value of month; b) BP's and #L processed are average of all values for month; c) Access data takes last access of month; d) Values for SGA and 'Infection Control' use most recent result.

*Albumin values use BCG method - as of July 2001

II. NUTRITION

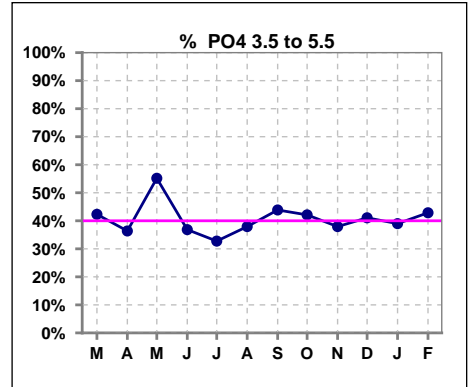
	Mar	Apr	May	Jun	Jul	Aug	Sep	Oct	Nov	Dec	Jan	Feb
# Albumin	52	55	58	57	58	58	57	57	58	56	59	56
# Albumin >= 4.0	25	29	27	20	20	22	20	21	25	27	24	28
Pop. Mean	3.9	3.9	3.9	3.8	3.8	3.8	3.8	3.8	3.8	3.9	3.9	3.9
Std. Deviation	0.39	0.38	0.35	0.37	0.33	0.32	0.37	0.39	0.37	0.41	0.40	0.43
% Alb >= 4.0	48%	53%	47%	35%	34%	38%	35%	37%	43%	48%	41%	50%



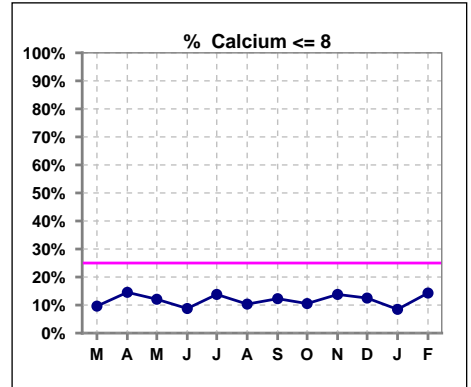
Lab methodology for PTH changed January 2012

III. OSTEODYSTROPHY

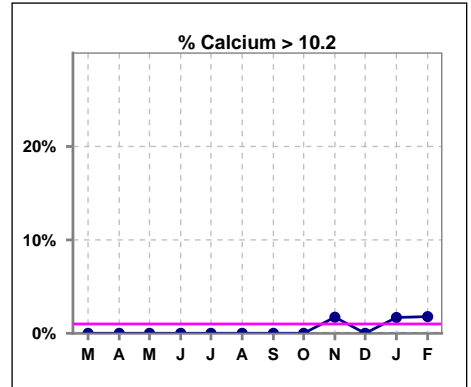
	Mar	Apr	May	Jun	Jul	Aug	Sep	Oct	Nov	Dec	Jan	Feb
# PO4	52	55	58	57	58	58	57	57	58	56	59	56
# PO4 3.5 to 5.5	22	20	32	21	19	22	25	24	22	23	23	24
Pop. Mean	5.8	6.1	5.5	5.8	6.2	5.9	5.7	5.8	6.0	6.0	6.2	6.2
Std. Deviation	1.67	1.90	1.91	1.37	1.70	1.61	1.48	1.63	1.72	1.72	1.94	1.84
% PO4 3.5 to 5.5	42%	36%	55%	37%	33%	38%	44%	42%	38%	41%	39%	43%



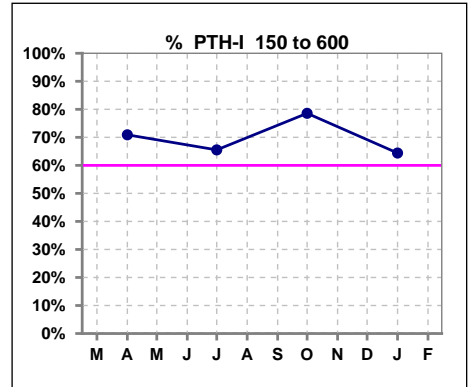
	Mar	Apr	May	Jun	Jul	Aug	Sep	Oct	Nov	Dec	Jan	Feb
# Calcium	52	55	58	57	58	58	57	57	58	56	59	56
# Calcium <= 8	5	8	7	5	8	6	7	6	8	7	5	8
Pop. Mean	9.0	9.0	9.0	8.9	8.8	8.9	8.8	8.9	8.9	8.7	8.9	8.9
Std. Deviation	0.65	0.72	0.71	0.61	0.67	0.67	0.67	0.66	0.71	0.72	0.70	0.72
% Calcium <= 8	10%	15%	12%	9%	14%	10%	12%	11%	14%	13%	8%	14%



	Mar	Apr	May	Jun	Jul	Aug	Sep	Oct	Nov	Dec	Jan	Feb
# Calcium	52	55	58	57	58	58	57	57	58	56	59	56
# Calcium > 10.2	0	0	0	0	0	0	0	0	1	0	1	1
Pop. Mean	9.0	9.0	9.0	8.9	8.8	8.9	8.8	8.9	8.9	8.7	8.9	8.9
Std. Deviation	0.65	0.72	0.71	0.61	0.67	0.67	0.67	0.66	0.71	0.72	0.70	0.72
% Calcium > 10.2	0%	0%	0%	0%	0%	0%	0%	0%	2%	0%	2%	2%



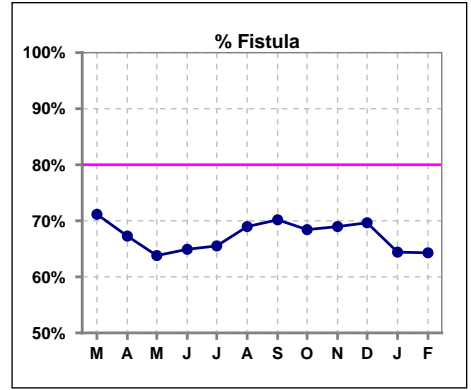
	Mar	Apr	May	Jun	Jul	Aug	Sep	Oct	Nov	Dec	Jan	Feb
# PTH-I		55			58				56		59	
# PTH-I 150 to 600		39			38				44		38	
Pop. Mean		419			470				449		443	
Std. Deviation		286			306				277		251	
% PTH-I 150 to 600		71%			66%				79%		64%	



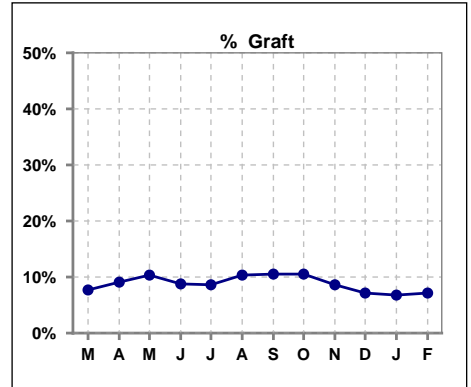
Methodology: a) All labs for 'Adequacy of Dialysis', 'Nutrition', 'Osteodystrophy', 'Anemia' and 'Diabetes' based on last value of month; b) BP's and #L processed are average of all values for month; c) Access data takes last access of month; d) Values for SGA and 'Infection Control' use most recent result.

IV. ACCESS

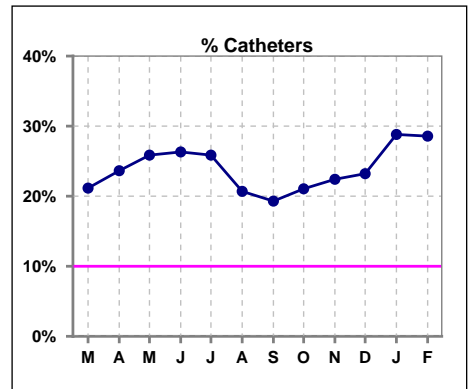
	Mar	Apr	May	Jun	Jul	Aug	Sep	Oct	Nov	Dec	Jan	Feb
# Access	52	55	58	57	58	58	57	57	58	56	59	56
# Fistula	37	37	37	37	38	40	40	39	40	39	38	36
% Fistula	71%	67%	64%	65%	66%	69%	70%	68%	69%	70%	64%	64%



	Mar	Apr	May	Jun	Jul	Aug	Sep	Oct	Nov	Dec	Jan	Feb
# Access	52	55	58	57	58	58	57	57	58	56	59	56
# Graft	4	5	6	5	5	6	6	6	5	4	4	4
% Graft	8%	9%	10%	9%	9%	10%	11%	11%	9%	7%	7%	7%



	Mar	Apr	May	Jun	Jul	Aug	Sep	Oct	Nov	Dec	Jan	Feb
# Access	52	55	58	57	58	58	57	57	58	56	59	56
# Catheters	11	13	15	15	15	12	11	12	13	13	17	16
% Catheters	21%	24%	26%	26%	26%	21%	19%	21%	22%	23%	29%	29%



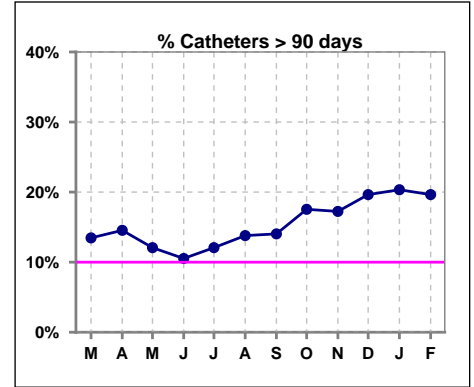
Methodology: a) All labs for 'Adequacy of Dialysis', 'Nutrition', 'Osteodystrophy', 'Anemia' and 'Diabetes' based on last value of month; b) BP's and #L processed are average of all values for month; c) Access data takes last access of month; d) Values for SGA and 'Infection Control' use most recent result.

IV. ACCESS - CONT.

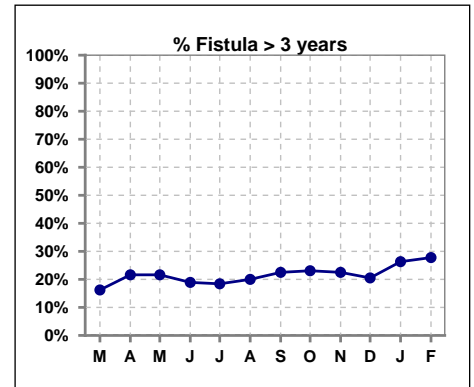
Catheters > 90 days

	Mar	Apr	May	Jun	Jul	Aug	Sep	Oct	Nov	Dec	Jan	Feb
# Access	52	55	58	57	58	58	57	57	58	56	59	56
# Catheters	7	8	7	6	7	8	8	10	10	11	12	11
% Catheters	13%	15%	12%	11%	12%	14%	14%	18%	17%	20%	20%	20%

Definition: Catheter in use on last treatment of the month



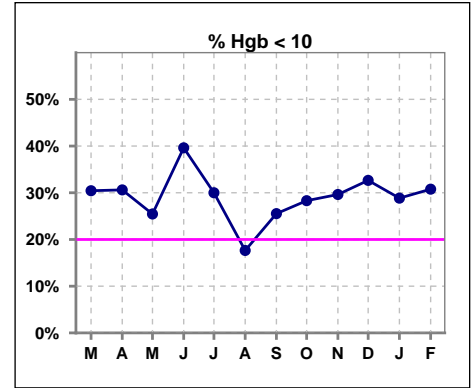
	Mar	Apr	May	Jun	Jul	Aug	Sep	Oct	Nov	Dec	Jan	Feb
# Fistula	37	37	37	37	38	40	40	39	40	39	38	36
# Fistula > 3 yrs	6	8	8	7	7	8	9	9	9	8	10	10
% Fistula > 3 yrs	16%	22%	22%	19%	18%	20%	23%	23%	23%	21%	26%	28%



V. ANEMIA

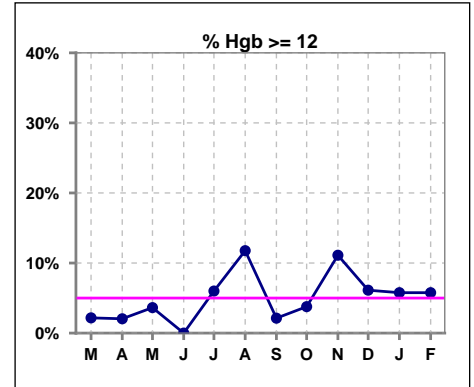
	Mar	Apr	May	Jun	Jul	Aug	Sep	Oct	Nov	Dec	Jan	Feb
# Hgb	46	49	55	53	50	51	47	53	54	49	52	52
# Hgb < 10	14	15	14	21	15	9	12	15	16	16	15	16
Pop. Mean	10.4	10.5	10.4	10.2	10.3	10.7	10.5	10.5	10.7	10.5	10.5	10.5
Std. Deviation	0.8	1.3	1.1	1.3	1.3	1.3	1.0	1.2	1.4	1.2	1.4	1.4
% Hgb < 10	30%	31%	25%	40%	30%	18%	26%	28%	30%	33%	29%	31%

Note: Excludes patients who received no ESA in month.



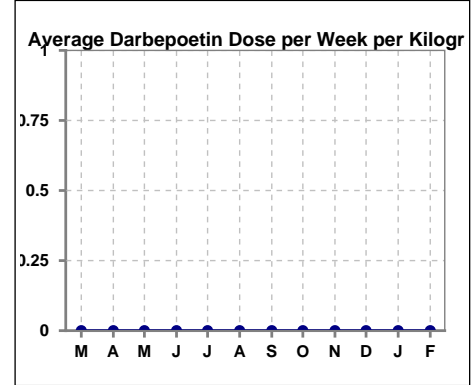
	Mar	Apr	May	Jun	Jul	Aug	Sep	Oct	Nov	Dec	Jan	Feb
# Hgb	46	49	55	53	50	51	47	53	54	49	52	52
# Hgb >= 12	1	1	2	0	3	6	1	2	6	3	3	3
Pop. Mean	10.4	10.5	10.4	10.2	10.3	10.7	10.5	10.5	10.7	10.5	10.5	10.5
Std. Deviation	0.8	1.3	1.1	1.3	1.3	1.3	1.0	1.2	1.4	1.2	1.4	1.4
% Hgb >= 12	2%	2%	4%	0%	6%	12%	2%	4%	11%	6%	6%	6%

Note: Excludes patients who received no ESA in month.



Average Darbepoetin Dose per Week per Kilogram

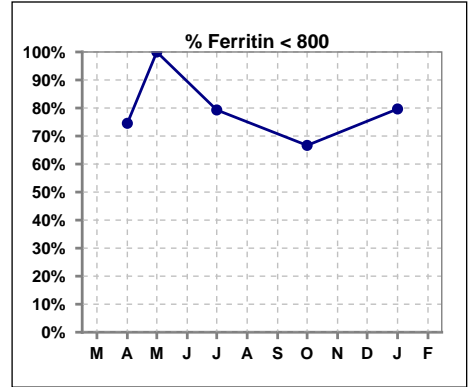
	Mar	Apr	May	Jun	Jul	Aug	Sep	Oct	Nov	Dec	Jan	Feb
# Average Darbepoetin	0	0	0	0	0	0	0	0	0	0	0	0



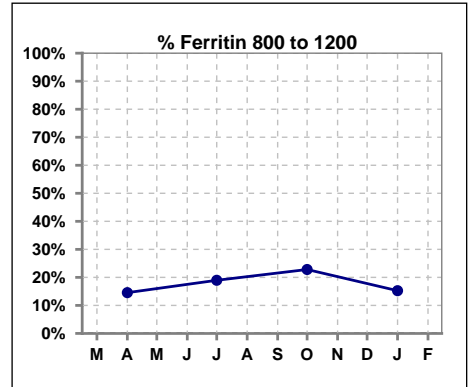
V. ANEMIA - CONT.

Iron Profile

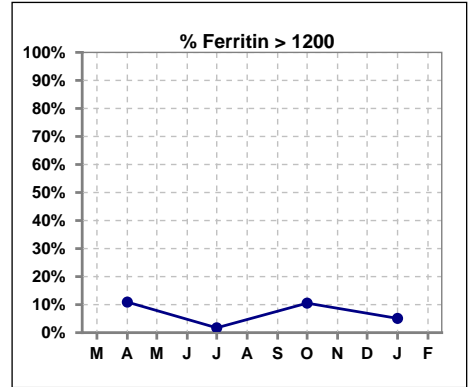
	Mar	Apr	May	Jun	Jul	Aug	Sep	Oct	Nov	Dec	Jan	Feb
# Ferritin		55	3		58			57			59	
# Ferritin < 800		41	3		46			38			47	
Pop. Mean		531	249		469			580			512	
Std. Deviation		436	349		371			446			392	
% Ferritin < 800		75%	100%		79%			67%			80%	



	Mar	Apr	May	Jun	Jul	Aug	Sep	Oct	Nov	Dec	Jan	Feb
# Ferritin		55	3		58			57			59	
# Ferritin 800 to 1200		8			11			13			9	
Pop. Mean		531	249		469			580			512	
Std. Deviation		436	349		371			446			392	
% Ferritin 800 to 1200		15%			19%			23%			15%	



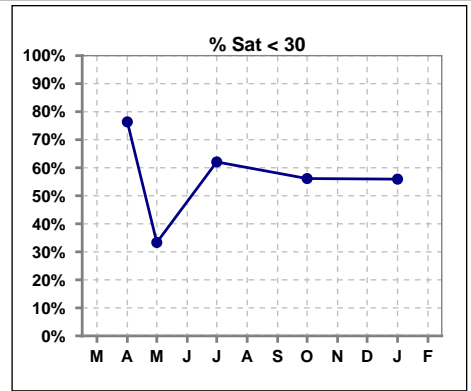
	Mar	Apr	May	Jun	Jul	Aug	Sep	Oct	Nov	Dec	Jan	Feb
# Ferritin		55	3		58			57			59	
# Ferritin > 1200		6			1			6			3	
Pop. Mean		531	249		469			580			512	
Std. Deviation		436	349		371			446			392	
% Ferritin > 1200		11%			2%			11%			5%	



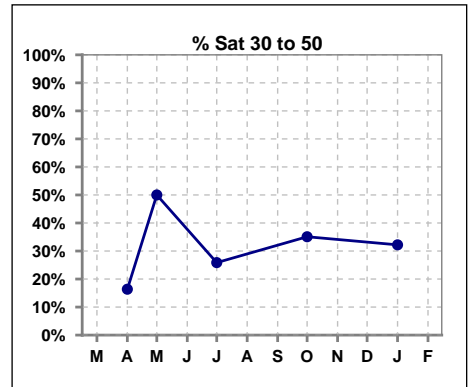
Methodology: a) All labs for 'Adequacy of Dialysis', 'Nutrition', 'Osteodystrophy', 'Anemia' and 'Diabetes' based on last value of month; b) BP's and #L processed are average of all values for month; c) Access data takes last access of month; d) Values for SGA and 'Infection Control' use most recent result.

V. ANEMIA - CONT.

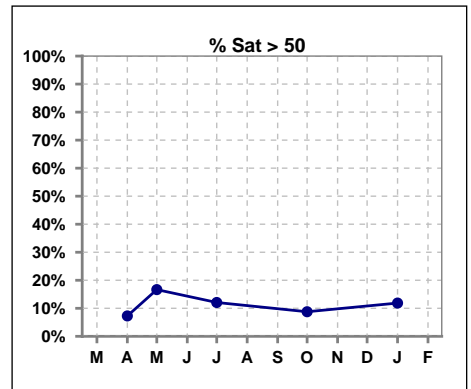
	Mar	Apr	May	Jun	Jul	Aug	Sep	Oct	Nov	Dec	Jan	Feb
# % Sat		55	6		58			57			59	
# % Sat < 30		42	2		36			32			33	
Pop. Mean		25	37		30			31			31	
Std. Deviation		13	25		14			17			17	
% % Sat < 30		76%	33%		62%			56%			56%	



	Mar	Apr	May	Jun	Jul	Aug	Sep	Oct	Nov	Dec	Jan	Feb
# % Sat		55	6		58			57			59	
# % Sat 30 to 50		9	3		15			20			19	
Pop. Mean		25	37		30			31			31	
Std. Deviation		13	25		14			17			17	
% % Sat 30 to 50		16%	50%		26%			35%			32%	

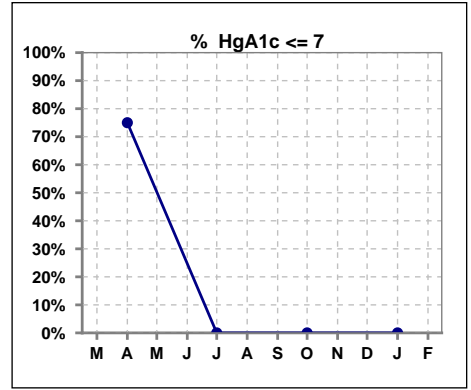


	Mar	Apr	May	Jun	Jul	Aug	Sep	Oct	Nov	Dec	Jan	Feb
# % Sat		55	6		58			57			59	
# % Sat > 50		4	1		7			5			7	
Pop. Mean		25	37		30			31			31	
Std. Deviation		13	25		14			17			17	
% % Sat > 50		7%	17%		12%			9%			12%	



VI. Diabetes

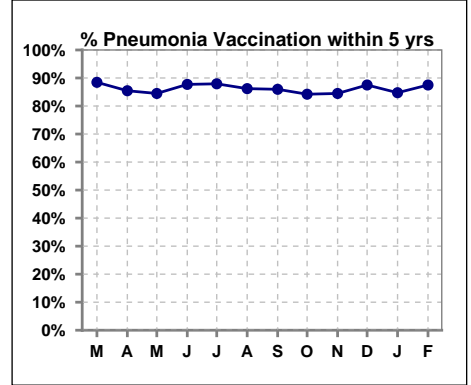
	Mar	Apr	May	Jun	Jul	Aug	Sep	Oct	Nov	Dec	Jan	Feb
# HgA1c		36			0			0			0	
# HgA1c <= 7		27			0			0			0	
Pop. Mean		6.4			0			0			0	
Std. Deviation		1.48			0			0			0	
% HgA1c <= 7		75%			0%			0%			0%	



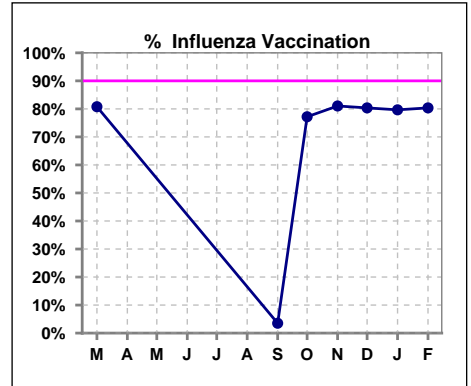
VII. Infection Control

Pneumonia vaccination within the past five years

	Mar	Apr	May	Jun	Jul	Aug	Sep	Oct	Nov	Dec	Jan	Feb
# Patient	52	55	58	57	58	58	57	57	58	56	59	56
# Pneumonia	46	47	49	50	51	50	49	48	49	49	50	49
% Pneumonia	88%	85%	84%	88%	88%	86%	86%	84%	84%	88%	85%	88%



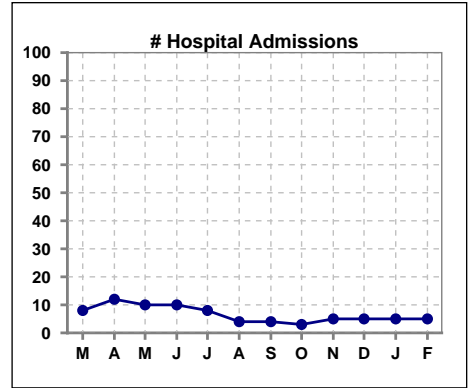
	Mar	Apr	May	Jun	Jul	Aug	Sep	Oct	Nov	Dec	Jan	Feb
# Patient	52						57	57	58	56	59	56
# Influenza	42						2	44	47	45	47	45
% Influenza	81%						4%	77%	81%	80%	80%	80%



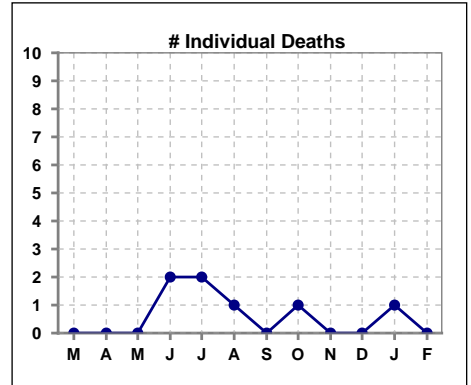
Methodology: a) All labs for 'Adequacy of Dialysis', 'Nutrition', 'Osteodystrophy', 'Anemia' and 'Diabetes' based on last value of month; b) BP's and #L processed are average of all values for month; c) Access data takes last access of month; d) Values for SGA and 'Infection Control' use most recent result.

VIII. Outcome measures

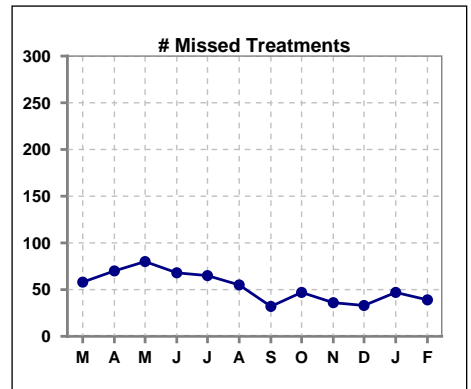
	Mar	Apr	May	Jun	Jul	Aug	Sep	Oct	Nov	Dec	Jan	Feb
# Patient	52	55	58	57	58	58	57	57	58	56	59	56
# Hospital Admissions	8	12	10	10	8	4	4	3	5	5	5	5



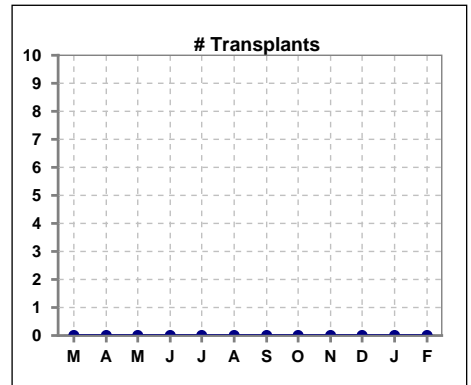
	Mar	Apr	May	Jun	Jul	Aug	Sep	Oct	Nov	Dec	Jan	Feb
# Patient	52	55	58	57	58	58	57	57	58	56	59	56
# Individual Deaths	0	0	0	2	2	1	0	1	0	0	1	0



	Mar	Apr	May	Jun	Jul	Aug	Sep	Oct	Nov	Dec	Jan	Feb
# Patient	52	55	58	57	58	58	57	57	58	56	59	56
# Missed Treatments	58	70	80	68	65	55	32	47	36	33	47	39



	Mar	Apr	May	Jun	Jul	Aug	Sep	Oct	Nov	Dec	Jan	Feb
# Patient	52	55	58	57	58	58	57	57	58	56	59	56
# Transplants	0	0	0	0	0	0	0	0	0	0	0	0



Methodology: a) All labs for 'Adequacy of Dialysis', 'Nutrition', 'Osteodystrophy', 'Anemia' and 'Diabetes' based on last value of month; b) BP's and #L processed are average of all values for month; c) Access data takes last access of month; d) Values for SGA and 'Infection Control' use most recent result.