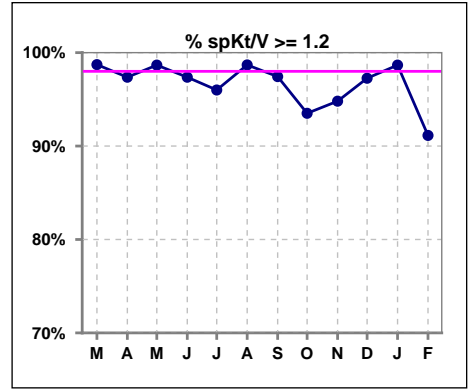
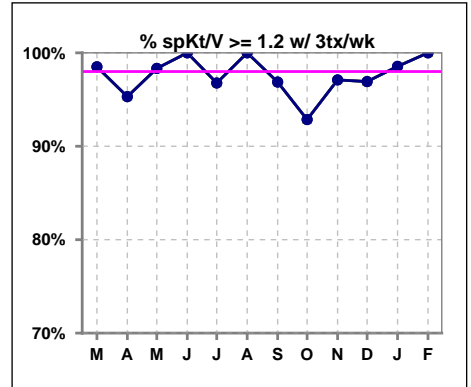


I. ADEQUACY OF DIALYSIS

	Mar	Apr	May	Jun	Jul	Aug	Sep	Oct	Nov	Dec	Jan	Feb
# spKt/V	78	76	75	76	75	76	78	77	77	73	75	79
# spKt/V >= 1.2	77	74	74	74	72	75	76	72	73	71	74	72
Pop. Mean	1.68	1.65	1.62	1.62	1.66	1.61	1.58	1.60	1.60	1.64	1.60	1.58
Std. Deviation	0.35	0.34	0.36	0.34	0.63	0.27	0.31	0.35	0.34	0.42	0.33	0.32
% spKt/V >= 1.2	99%	97%	99%	97%	96%	99%	97%	94%	95%	97%	99%	91%

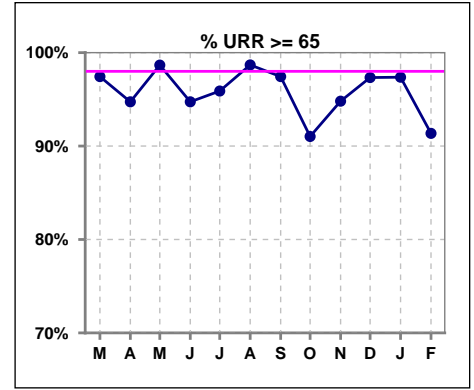


	Mar	Apr	May	Jun	Jul	Aug	Sep	Oct	Nov	Dec	Jan	Feb
# spKt/V w/ 3tx/wk	67	64	60	63	62	62	64	70	69	65	69	68
# spKt/V >= 1.2 w/3tx/wk	66	61	59	63	60	62	62	65	67	63	68	68
Pop. Mean	1.70	1.67	1.63	1.62	1.67	1.62	1.59	1.60	1.61	1.63	1.59	1.62
Std. Deviation	0.36	0.35	0.38	0.34	0.68	0.27	0.31	0.36	0.33	0.44	0.34	0.30
% >= 1.2 w/3tx/wk	99%	95%	98%	100%	97%	100%	97%	93%	97%	97%	99%	100%

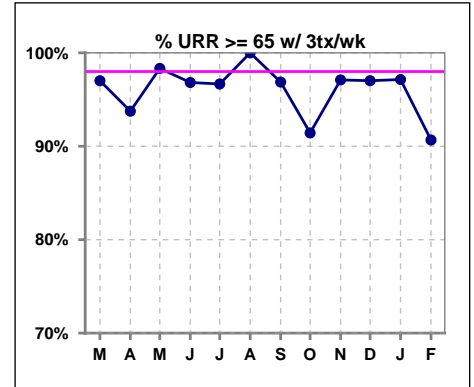


I. ADEQUACY OF DIALYSIS - CONT.

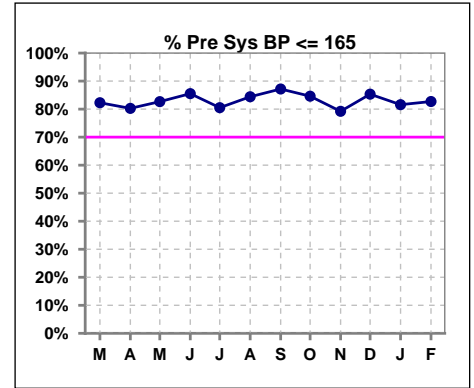
	Mar	Apr	May	Jun	Jul	Aug	Sep	Oct	Nov	Dec	Jan	Feb
# URR	78	76	75	76	73	76	78	78	77	75	76	81
# URR >= 65	76	72	74	72	70	75	76	71	73	73	74	74
Pop. Mean	76	75	74	75	74	75	74	74	75	75	74	74
Std. Deviation	7.30	6.96	7.99	6.65	8.47	5.41	6.40	7.31	6.94	6.61	6.00	6.67
% URR >= 65	97%	95%	99%	95%	96%	99%	97%	91%	95%	97%	97%	91%



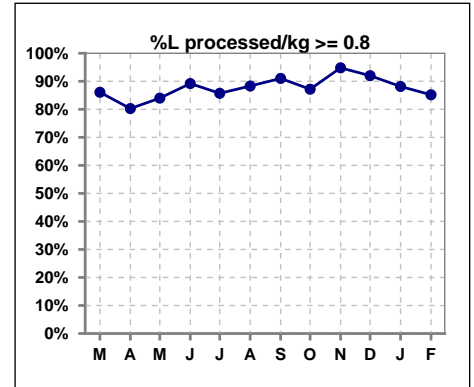
	Mar	Apr	May	Jun	Jul	Aug	Sep	Oct	Nov	Dec	Jan	Feb
# URR w/ 3tx/wk	67	64	60	63	60	62	64	70	69	67	70	75
# URR>=65 w/ 3tx/wk	65	60	59	61	58	62	62	64	67	65	68	68
Pop. Mean	76	76	75	75	74	75	75	74	75	75	74	74
Std. Deviation	7.46	7.14	8.45	6.33	8.84	5.26	6.52	7.29	6.71	6.71	6.01	6.72
% URR>=65 w/ 3tx/wk	97%	94%	98%	97%	97%	100%	97%	91%	97%	97%	97%	91%



	Mar	Apr	May	Jun	Jul	Aug	Sep	Oct	Nov	Dec	Jan	Feb
# Pre Sys BP	79	76	75	76	77	77	78	78	77	75	76	81
# Pre Sys BP <= 165	66	61	63	66	64	67	68	68	61	65	64	68
Pop. Mean	143	145	146	141	143	144	146	144	146	146	146	145
Std. Deviation	20.7	21.8	21.3	20.6	22.7	19.9	19.5	20.0	20.6	18.5	20.4	19.4
%Pre Sys BP <=165	82%	80%	83%	86%	81%	84%	87%	85%	79%	85%	82%	83%



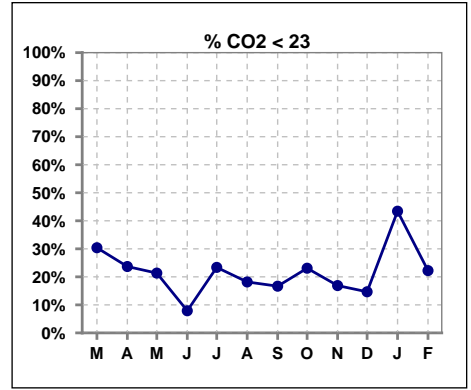
	Mar	Apr	May	Jun	Jul	Aug	Sep	Oct	Nov	Dec	Jan	Feb
# L processed/kg	79	76	75	74	77	77	78	78	77	75	76	81
# L processed/kg>=0.8	68	61	63	66	66	68	71	68	73	69	67	69
Pop. Mean	1	1	1	1	1	1	1	1	1	1	1	1
Std. Deviation	0.3	0.3	0.3	0.3	0.4	0.3	0.3	0.3	0.3	0.3	0.3	0.3
% L processed/kg>=0.8	86%	80%	84%	89%	86%	88%	91%	87%	95%	92%	88%	85%



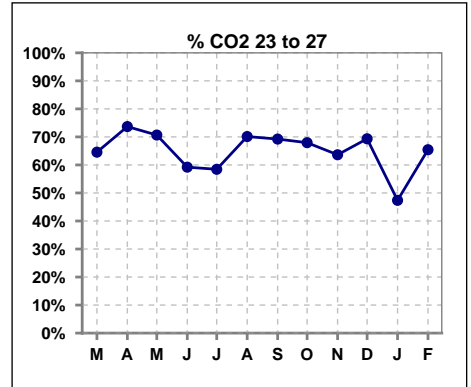
Methodology: a) All labs for 'Adequacy of Dialysis', 'Nutrition', 'Osteodystrophy', 'Anemia' and 'Diabetes' based on last value of month; b) BP's and #L processed are average of all values for month; c) Access data takes last access of month; d) Values for SGA and 'Infection Control' use most recent result.

I. ADEQUACY OF DIALYSIS - CONT.

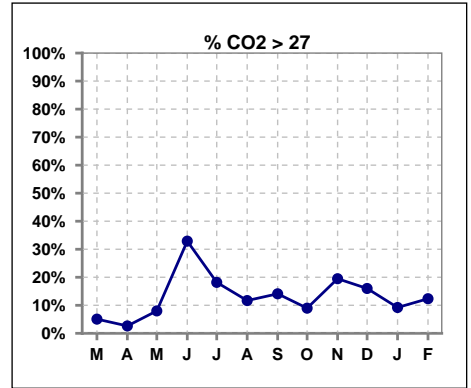
	Mar	Apr	May	Jun	Jul	Aug	Sep	Oct	Nov	Dec	Jan	Feb
# CO2	79	76	75	76	77	77	78	78	77	75	76	81
# CO2 < 23	24	18	16	6	18	14	13	18	13	11	33	18
Pop. Mean	24	24	24	26	24	25	25	24	25	25	23	24
Std. Deviation	2.73	2.47	2.40	3.06	3.05	2.66	2.74	2.85	2.70	2.70	3.00	2.63
% CO2 < 23	30%	24%	21%	8%	23%	18%	17%	23%	17%	15%	43%	22%



	Mar	Apr	May	Jun	Jul	Aug	Sep	Oct	Nov	Dec	Jan	Feb
# CO2	79	76	75	76	77	77	78	78	77	75	76	81
# CO2 23 to 27	51	56	53	45	45	54	54	53	49	52	36	53
Pop. Mean	24	24	24	26	24	25	25	24	25	25	23	24
Std. Deviation	2.73	2.47	2.40	3.06	3.05	2.66	2.74	2.85	2.70	2.70	3.00	2.63
% CO2 23 to 27	65%	74%	71%	59%	58%	70%	69%	68%	64%	69%	47%	65%



	Mar	Apr	May	Jun	Jul	Aug	Sep	Oct	Nov	Dec	Jan	Feb
# CO2	79	76	75	76	77	77	78	78	77	75	76	81
# CO2 > 27	4	2	6	25	14	9	11	7	15	12	7	10
Pop. Mean	24	24	24	26	24	25	25	24	25	25	23	24
Std. Deviation	2.73	2.47	2.40	3.06	3.05	2.66	2.74	2.85	2.70	2.70	3.00	2.63
% CO2 > 27	5%	3%	8%	33%	18%	12%	14%	9%	19%	16%	9%	12%

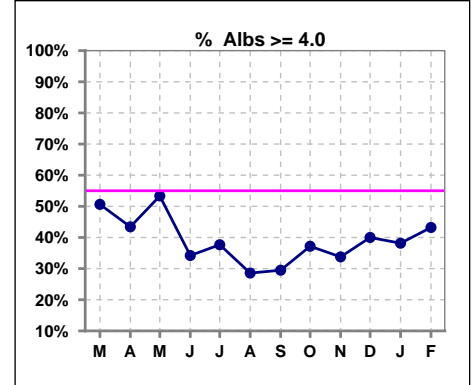


Methodology: a) All labs for 'Adequacy of Dialysis', 'Nutrition', 'Osteodystrophy', 'Anemia' and 'Diabetes' based on last value of month; b) BP's and #L processed are average of all values for month; c) Access data takes last access of month; d) Values for SGA and 'Infection Control' use most recent result.

*Albumin values use BCG method - as of July 2001

II. NUTRITION

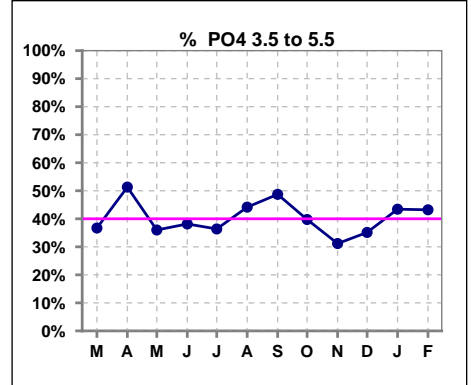
	Mar	Apr	May	Jun	Jul	Aug	Sep	Oct	Nov	Dec	Jan	Feb
# Albumin	79	76	75	76	77	77	78	78	77	75	76	81
# Albumin >= 4.0	40	33	40	26	29	22	23	29	26	30	29	35
Pop. Mean	3.9	3.9	4.0	3.8	3.8	3.7	3.8	3.8	3.8	3.9	3.8	3.8
Std. Deviation	0.36	0.36	0.30	0.35	0.39	0.36	0.33	0.35	0.38	0.36	0.39	0.41
% Alb >= 4.0	51%	43%	53%	34%	38%	29%	29%	37%	34%	40%	38%	43%



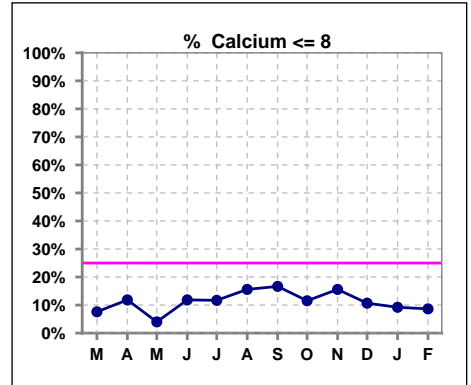
Lab methodology for PTH changed January 2012

III. OSTEODYSTROPHY

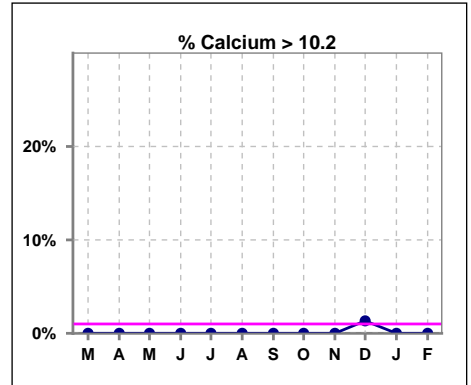
	Mar	Apr	May	Jun	Jul	Aug	Sep	Oct	Nov	Dec	Jan	Feb
# PO4	79	76	75	76	77	77	78	78	77	74	76	81
# PO4 3.5 to 5.5	29	39	27	29	28	34	38	31	24	26	33	35
Pop. Mean	6.1	5.8	6.1	5.9	6.0	5.9	5.7	6.1	6.1	6.2	5.9	6.2
Std. Deviation	1.82	1.72	1.77	1.65	1.96	2.02	1.77	2.14	2.04	1.86	1.99	2.02
% PO4 3.5 to 5.5	37%	51%	36%	38%	36%	44%	49%	40%	31%	35%	43%	43%



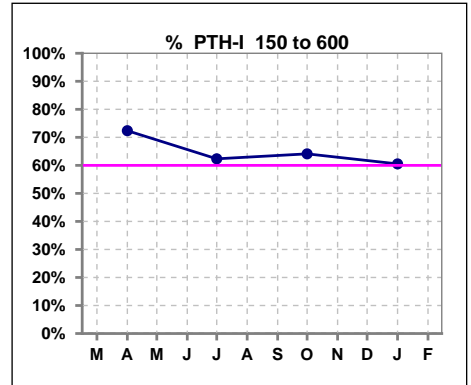
	Mar	Apr	May	Jun	Jul	Aug	Sep	Oct	Nov	Dec	Jan	Feb
# Calcium	79	76	75	76	77	77	78	78	77	75	76	81
# Calcium <= 8	6	9	3	9	9	12	13	9	12	8	7	7
Pop. Mean	9.0	8.9	9.1	8.9	8.8	8.7	8.8	8.8	8.8	8.9	8.9	8.9
Std. Deviation	0.70	0.66	0.59	0.65	0.68	0.65	0.63	0.72	0.68	0.69	0.60	0.57
% Calcium <= 8	8%	12%	4%	12%	12%	16%	17%	12%	16%	11%	9%	9%



	Mar	Apr	May	Jun	Jul	Aug	Sep	Oct	Nov	Dec	Jan	Feb
# Calcium	79	76	75	76	77	77	78	78	77	75	76	81
# Calcium > 10.2	0	0	0	0	0	0	0	0	0	1	0	0
Pop. Mean	9.0	8.9	9.1	8.9	8.8	8.7	8.8	8.8	8.8	8.9	8.9	8.9
Std. Deviation	0.70	0.66	0.59	0.65	0.68	0.65	0.63	0.72	0.68	0.69	0.60	0.57
% Calcium > 10.2	0%	0%	0%	0%	0%	0%	0%	0%	0%	1%	0%	0%



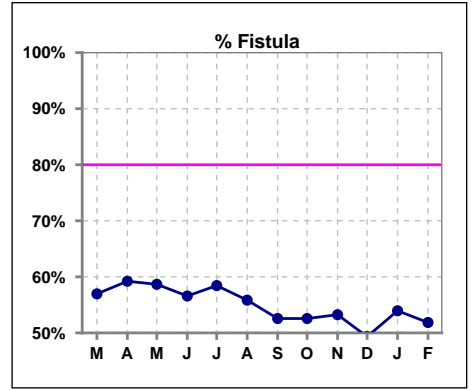
	Mar	Apr	May	Jun	Jul	Aug	Sep	Oct	Nov	Dec	Jan	Feb
# PTH-I		76			77			78			76	
# PTH-I 150 to 600		55			48			50			46	
Pop. Mean		447			572			541			427	
Std. Deviation		437			484			479			308	
% PTH-I 150 to 600		72%			62%			64%			61%	



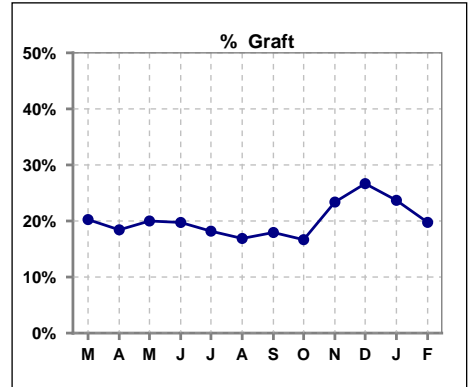
Methodology: a) All labs for 'Adequacy of Dialysis', 'Nutrition', 'Osteodystrophy', 'Anemia' and 'Diabetes' based on last value of month; b) BP's and #L processed are average of all values for month; c) Access data takes last access of month; d) Values for SGA and 'Infection Control' use most recent result.

IV. ACCESS

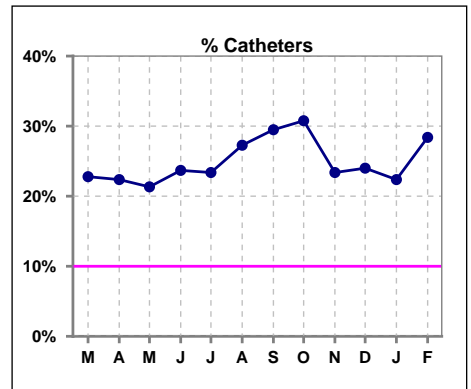
	Mar	Apr	May	Jun	Jul	Aug	Sep	Oct	Nov	Dec	Jan	Feb
# Access	79	76	75	76	77	77	78	78	77	75	76	81
# Fistula	45	45	44	43	45	43	41	41	41	37	41	42
% Fistula	57%	59%	59%	57%	58%	56%	53%	53%	53%	49%	54%	52%



	Mar	Apr	May	Jun	Jul	Aug	Sep	Oct	Nov	Dec	Jan	Feb
# Access	79	76	75	76	77	77	78	78	77	75	76	81
# Graft	16	14	15	15	14	13	14	13	18	20	18	16
% Graft	20%	18%	20%	20%	18%	17%	18%	17%	23%	27%	24%	20%



	Mar	Apr	May	Jun	Jul	Aug	Sep	Oct	Nov	Dec	Jan	Feb
# Access	79	76	75	76	77	77	78	78	77	75	76	81
# Catheters	18	17	16	18	18	21	23	24	18	18	17	23
% Catheters	23%	22%	21%	24%	23%	27%	29%	31%	23%	24%	22%	28%



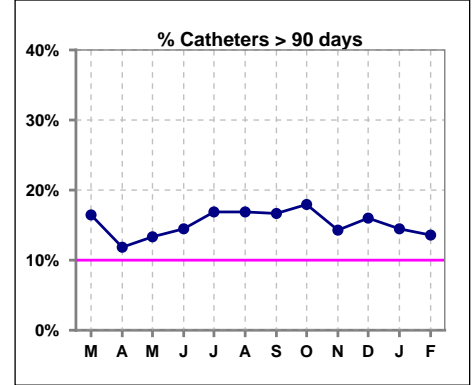
Methodology: a) All labs for 'Adequacy of Dialysis', 'Nutrition', 'Osteodystrophy', 'Anemia' and 'Diabetes' based on last value of month; b) BP's and #L processed are average of all values for month; c) Access data takes last access of month; d) Values for SGA and 'Infection Control' use most recent result.

IV. ACCESS - CONT.

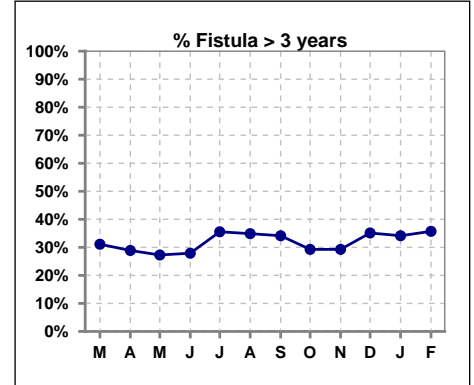
Catheters > 90 days

	Mar	Apr	May	Jun	Jul	Aug	Sep	Oct	Nov	Dec	Jan	Feb
# Access	79	76	75	76	77	77	78	78	77	75	76	81
# Catheters	13	9	10	11	13	13	13	14	11	12	11	11
% Catheters	16%	12%	13%	14%	17%	17%	17%	18%	14%	16%	14%	14%

Definition: Catheter in use on last treatment of the month



	Mar	Apr	May	Jun	Jul	Aug	Sep	Oct	Nov	Dec	Jan	Feb
# Fistula	45	45	44	43	45	43	41	41	41	37	41	42
# Fistula > 3 yrs	14	13	12	12	16	15	14	12	12	13	14	15
% Fistula > 3 yrs	31%	29%	27%	28%	36%	35%	34%	29%	29%	35%	34%	36%

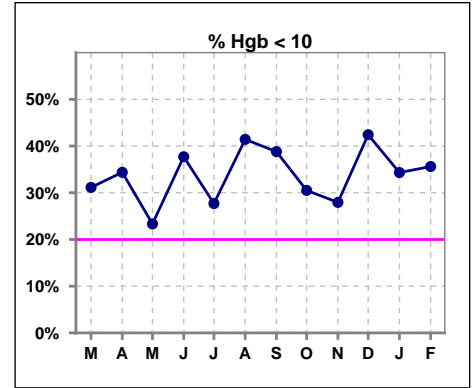


Methodology: a) All labs for 'Adequacy of Dialysis', 'Nutrition', 'Osteodystrophy', 'Anemia' and 'Diabetes' based on last value of month; b) BP's and #L processed are average of all values for month; c) Access data takes last access of month; d) Values for SGA and 'Infection Control' use most recent result.

V. ANEMIA

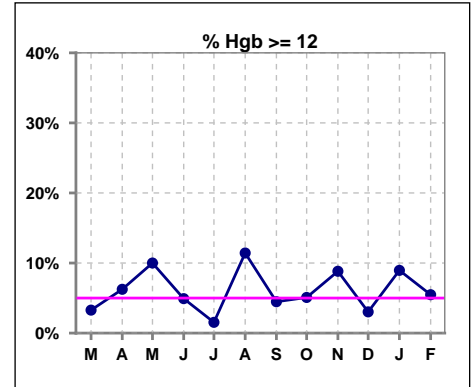
	Mar	Apr	May	Jun	Jul	Aug	Sep	Oct	Nov	Dec	Jan	Feb
# Hgb	61	64	60	61	65	70	67	59	68	66	67	73
# Hgb < 10	19	22	14	23	18	29	26	18	19	28	23	26
Pop. Mean	10.2	10.5	10.6	10.3	10.5	10.3	10.2	10.4	10.6	10.3	10.3	10.3
Std. Deviation	1.2	1.2	1.4	1.3	1.2	1.4	1.3	1.1	1.3	1.1	1.2	1.5
% Hgb < 10	31%	34%	23%	38%	28%	41%	39%	31%	28%	42%	34%	36%

Note: Excludes patients who received no ESA in month.



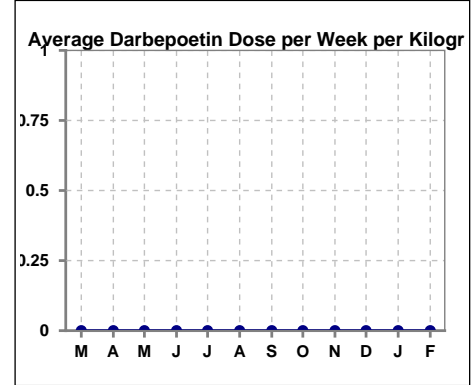
	Mar	Apr	May	Jun	Jul	Aug	Sep	Oct	Nov	Dec	Jan	Feb
# Hgb	61	64	60	61	65	70	67	59	68	66	67	73
# Hgb >= 12	2	4	6	3	1	8	3	3	6	2	6	4
Pop. Mean	10.2	10.5	10.6	10.3	10.5	10.3	10.2	10.4	10.6	10.3	10.3	10.3
Std. Deviation	1.2	1.2	1.4	1.3	1.2	1.4	1.3	1.1	1.3	1.1	1.2	1.5
% Hgb >= 12	3%	6%	10%	5%	2%	11%	4%	5%	9%	3%	9%	5%

Note: Excludes patients who received no ESA in month.



Average Darbepoetin Dose per Week per Kilogram

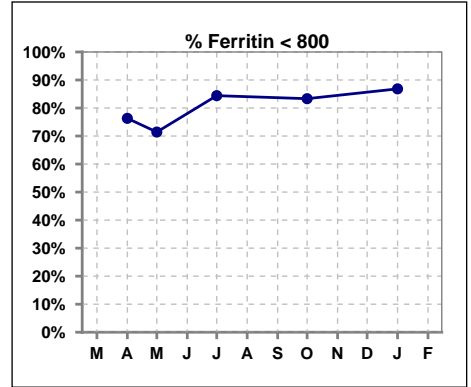
	Mar	Apr	May	Jun	Jul	Aug	Sep	Oct	Nov	Dec	Jan	Feb
# Average Darbepoetin	0	0	0	0	0	0	0	0	0	0	0	0



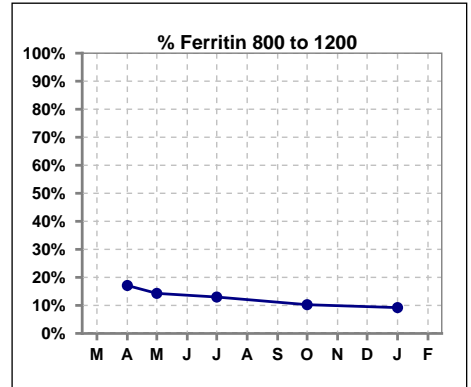
V. ANEMIA - CONT.

Iron Profile

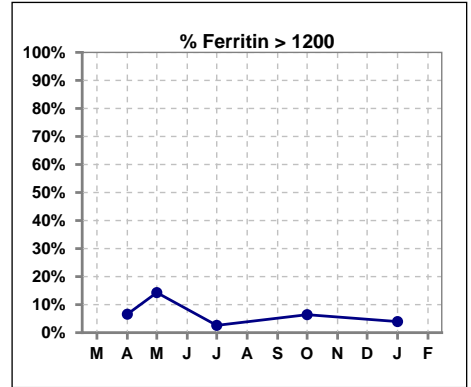
	Mar	Apr	May	Jun	Jul	Aug	Sep	Oct	Nov	Dec	Jan	Feb
# Ferritin		76	7		77			78			76	
# Ferritin < 800		58	5		65			65			66	
Pop. Mean		555	673		492			491			414	
Std. Deviation		360	363		302			348			333	
% Ferritin < 800		76%	71%		84%			83%			87%	



	Mar	Apr	May	Jun	Jul	Aug	Sep	Oct	Nov	Dec	Jan	Feb
# Ferritin		76	7		77			78			76	
# Ferritin 800 to 1200		13	1		10			8			7	
Pop. Mean		555	673		492			491			414	
Std. Deviation		360	363		302			348			333	
% Ferritin 800 to 1200		17%	14%		13%			10%			9%	



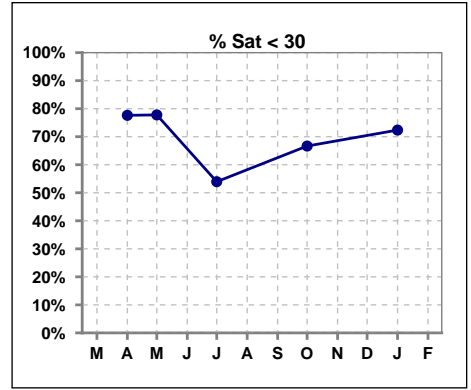
	Mar	Apr	May	Jun	Jul	Aug	Sep	Oct	Nov	Dec	Jan	Feb
# Ferritin		76	7		77			78			76	
# Ferritin > 1200		5	1		2			5			3	
Pop. Mean		555	673		492			491			414	
Std. Deviation		360	363		302			348			333	
% Ferritin > 1200		7%	14%		3%			6%			4%	



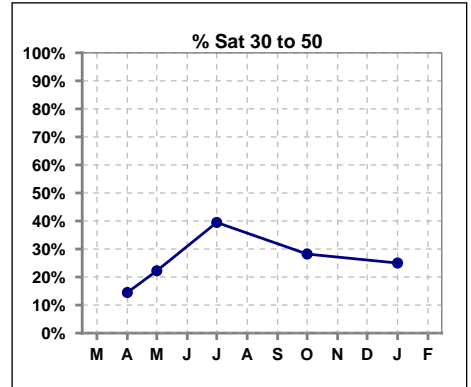
Methodology: a) All labs for 'Adequacy of Dialysis', 'Nutrition', 'Osteodystrophy', 'Anemia' and 'Diabetes' based on last value of month; b) BP's and #L processed are average of all values for month; c) Access data takes last access of month; d) Values for SGA and 'Infection Control' use most recent result.

V. ANEMIA - CONT.

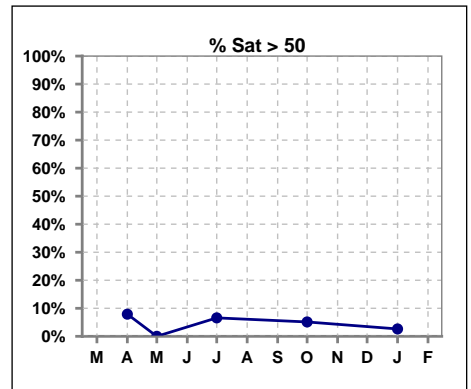
	Mar	Apr	May	Jun	Jul	Aug	Sep	Oct	Nov	Dec	Jan	Feb
# % Sat		76	9		76			78			76	
# % Sat < 30		59	7		41			52			55	
Pop. Mean		28	23		30			26			24	
Std. Deviation		17	8		13			12			11	
% % Sat < 30		78%	78%		54%			67%			72%	



	Mar	Apr	May	Jun	Jul	Aug	Sep	Oct	Nov	Dec	Jan	Feb
# % Sat		76	9		76			78			76	
# % Sat 30 to 50		11	2		30			22			19	
Pop. Mean		28	23		30			26			24	
Std. Deviation		17	8		13			12			11	
% % Sat 30 to 50		14%	22%		39%			28%			25%	



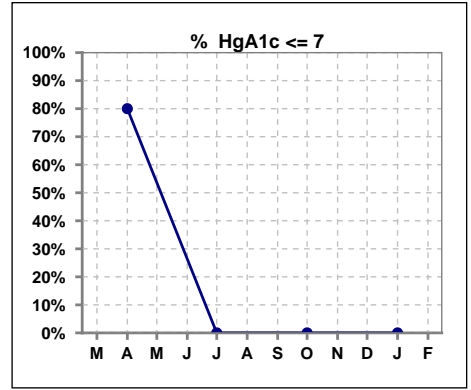
	Mar	Apr	May	Jun	Jul	Aug	Sep	Oct	Nov	Dec	Jan	Feb
# % Sat		76	9		76			78			76	
# % Sat > 50		6	0		5			4			2	
Pop. Mean		28	23		30			26			24	
Std. Deviation		17	8		13			12			11	
% % Sat > 50		8%	0%		7%			5%			3%	



Methodology: a) All labs for 'Adequacy of Dialysis', 'Nutrition', 'Osteodystrophy', 'Anemia' and 'Diabetes' based on last value of month; b) BP's and #L processed are average of all values for month; c) Access data takes last access of month; d) Values for SGA and 'Infection Control' use most recent result.

VI. Diabetes

	Mar	Apr	May	Jun	Jul	Aug	Sep	Oct	Nov	Dec	Jan	Feb
# HgA1c		45			0			0			0	
# HgA1c <= 7		36			0			0			0	
Pop. Mean		6.1			0			0			0	
Std. Deviation		1.42			0			0			0	
% HgA1c <= 7		80%			0%			0%			0%	

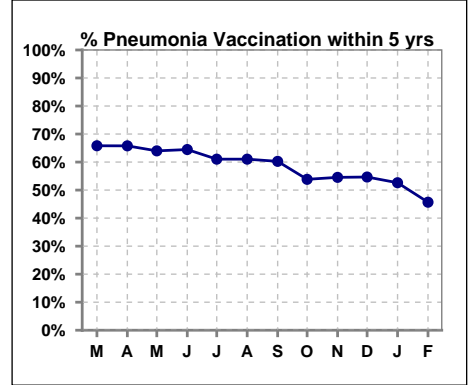


Methodology: a) All labs for 'Adequacy of Dialysis', 'Nutrition', 'Osteodystrophy', 'Anemia' and 'Diabetes' based on last value of month; b) BP's and #L processed are average of all values for month; c) Access data takes last access of month; d) Values for SGA and 'Infection Control' use most recent result.

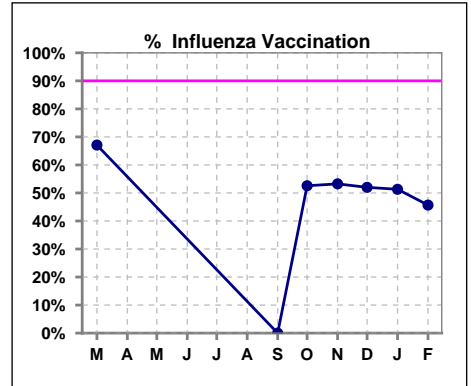
VII. Infection Control

Pneumonia vaccination within the past five years

	Mar	Apr	May	Jun	Jul	Aug	Sep	Oct	Nov	Dec	Jan	Feb
# Patient	79	76	75	76	77	77	78	78	77	75	76	81
# Pneumonia	52	50	48	49	47	47	47	42	42	41	40	37
% Pneumonia	66%	66%	64%	64%	61%	61%	60%	54%	55%	55%	53%	46%



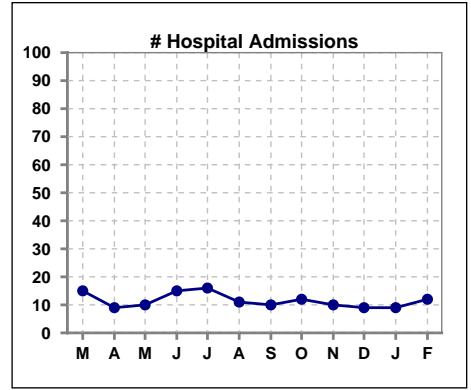
	Mar	Apr	May	Jun	Jul	Aug	Sep	Oct	Nov	Dec	Jan	Feb
# Patient	79						78	78	77	75	76	81
# Influenza	53						0	41	41	39	39	37
% Influenza	67%						0%	53%	53%	52%	51%	46%



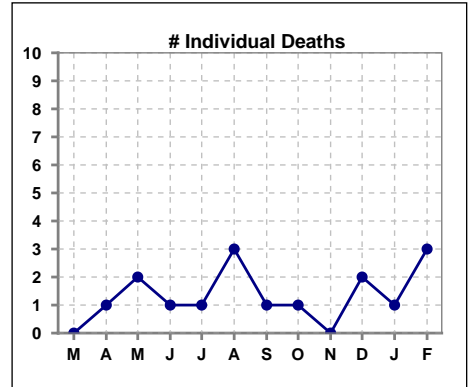
Methodology: a) All labs for 'Adequacy of Dialysis', 'Nutrition', 'Osteodystrophy', 'Anemia' and 'Diabetes' based on last value of month; b) BP's and #L processed are average of all values for month; c) Access data takes last access of month; d) Values for SGA and 'Infection Control' use most recent result.

VIII. Outcome measures

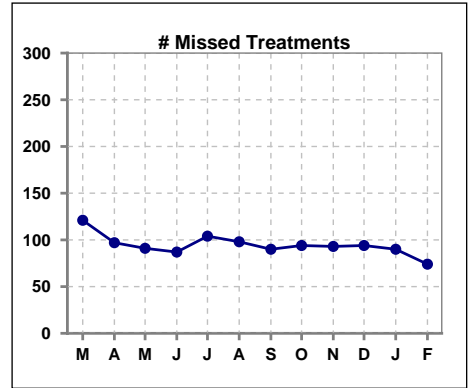
	Mar	Apr	May	Jun	Jul	Aug	Sep	Oct	Nov	Dec	Jan	Feb
# Patient	79	76	75	76	77	77	78	78	77	75	76	81
# Hospital Admissions	15	9	10	15	16	11	10	12	10	9	9	12



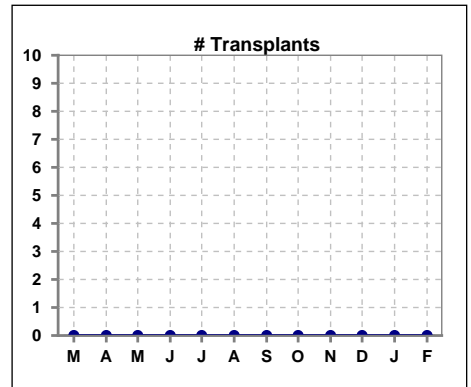
	Mar	Apr	May	Jun	Jul	Aug	Sep	Oct	Nov	Dec	Jan	Feb
# Patient	79	76	75	76	77	77	78	78	77	75	76	81
# Individual Deaths	0	1	2	1	1	3	1	1	0	2	1	3



	Mar	Apr	May	Jun	Jul	Aug	Sep	Oct	Nov	Dec	Jan	Feb
# Patient	79	76	75	76	77	77	78	78	77	75	76	81
# Missed Treatments	121	97	91	87	104	98	90	94	93	94	90	74



	Mar	Apr	May	Jun	Jul	Aug	Sep	Oct	Nov	Dec	Jan	Feb
# Patient	79	76	75	76	77	77	78	78	77	75	76	81
# Transplants	0	0	0	0	0	0	0	0	0	0	0	0



Methodology: a) All labs for 'Adequacy of Dialysis', 'Nutrition', 'Osteodystrophy', 'Anemia' and 'Diabetes' based on last value of month; b) BP's and #L processed are average of all values for month; c) Access data takes last access of month; d) Values for SGA and 'Infection Control' use most recent result.