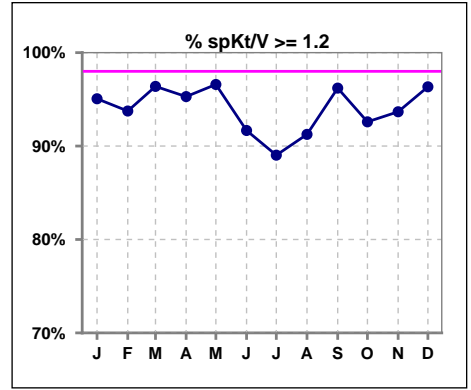
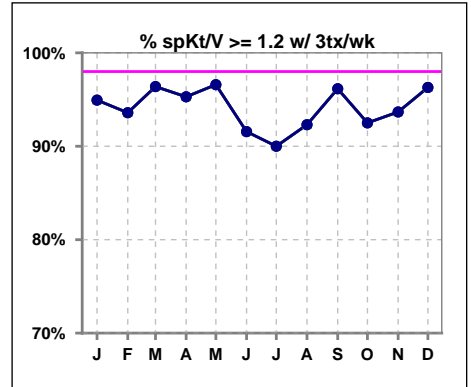


I. ADEQUACY OF DIALYSIS

	Jan	Feb	Mar	Apr	May	Jun	Jul	Aug	Sep	Oct	Nov	Dec
# spKt/V	81	80	83	85	88	84	82	80	79	81	79	82
# spKt/V >= 1.2	77	75	80	81	85	77	73	73	76	75	74	79
Pop. Mean	1.63	1.64	1.64	1.60	1.62	1.58	1.58	1.57	1.61	1.58	1.60	1.63
Std. Deviation	0.33	0.34	0.34	0.31	0.34	0.33	0.35	0.33	0.33	0.34	0.35	0.34
% spKt/V >= 1.2	95%	94%	96%	95%	97%	92%	89%	91%	96%	93%	94%	96%

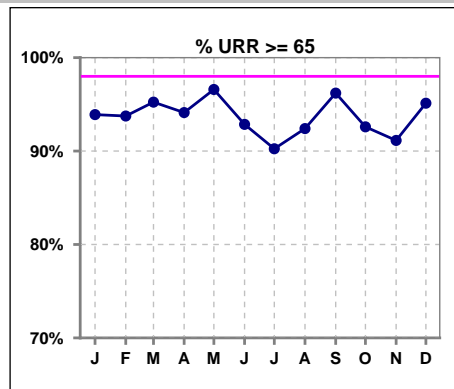


	Jan	Feb	Mar	Apr	May	Jun	Jul	Aug	Sep	Oct	Nov	Dec
# spKt/V w/ 3tx/wk	79	78	83	85	88	83	80	78	78	80	79	81
# spKt/V >= 1.2 w/3tx/wk	75	73	80	81	85	76	72	72	75	74	74	78
Pop. Mean	1.63	1.64	1.64	1.60	1.62	1.58	1.59	1.58	1.61	1.58	1.60	1.63
Std. Deviation	0.33	0.35	0.34	0.31	0.34	0.33	0.35	0.33	0.33	0.34	0.35	0.34
% >= 1.2 w/3tx/wk	95%	94%	96%	95%	97%	92%	90%	92%	96%	93%	94%	96%

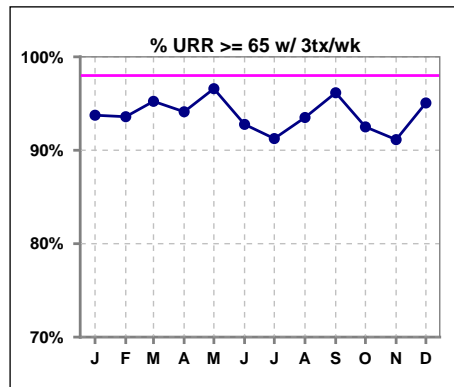


I. ADEQUACY OF DIALYSIS - CONT.

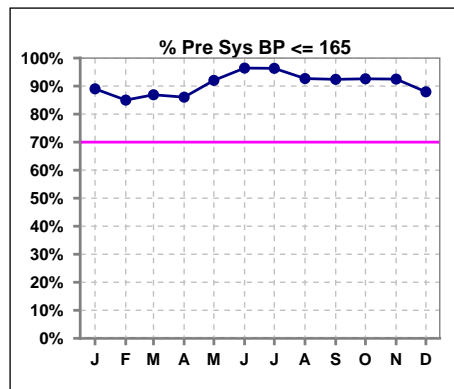
	Jan	Feb	Mar	Apr	May	Jun	Jul	Aug	Sep	Oct	Nov	Dec
# URR	82	80	84	85	88	84	82	79	79	81	79	82
# URR >= 65	77	75	80	80	85	78	74	73	76	75	72	78
Pop. Mean	75	75	75	75	75	74	74	74	74	74	74	75
Std. Deviation	6.66	7.31	6.99	6.54	6.53	7.19	7.45	6.76	6.41	7.27	7.41	6.96
% URR >= 65	94%	94%	95%	94%	97%	93%	90%	92%	96%	93%	91%	95%



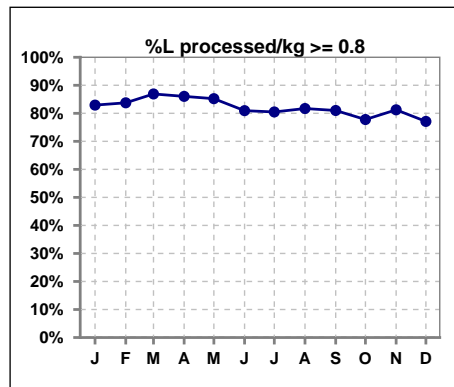
	Jan	Feb	Mar	Apr	May	Jun	Jul	Aug	Sep	Oct	Nov	Dec
# URR w/ 3tx/wk	80	78	84	85	88	83	80	77	78	80	79	81
# URR>=65 w/ 3tx/wk	75	73	80	80	85	77	73	72	75	74	72	77
Pop. Mean	75	75	75	75	75	74	74	74	74	74	74	75
Std. Deviation	6.73	7.40	6.99	6.54	6.53	7.21	7.42	6.65	6.45	7.30	7.41	7.00
% URR>=65 w/ 3tx/wk	94%	94%	95%	94%	97%	93%	91%	94%	96%	93%	91%	95%



	Jan	Feb	Mar	Apr	May	Jun	Jul	Aug	Sep	Oct	Nov	Dec
# Pre Sys BP	82	80	84	86	88	84	82	82	79	81	80	83
# Pre Sys BP <= 165	73	68	73	74	81	81	80	78	73	76	74	75
Pop. Mean	141	143	143	142	139	139	138	141	140	143	142	143
Std. Deviation	19.8	18.7	19.0	18.6	16.9	15.4	15.8	17.1	17.1	16.2	16.0	17.1
% Pre Sys BP <= 165	89%	85%	87%	86%	92%	96%	96%	93%	92%	93%	93%	88%



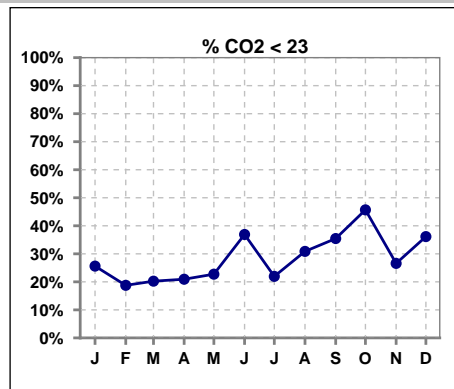
	Jan	Feb	Mar	Apr	May	Jun	Jul	Aug	Sep	Oct	Nov	Dec
# L processed/kg	82	80	84	86	88	84	82	82	79	81	80	83
# L processed/kg >= 0.8	68	67	73	74	75	68	66	67	64	63	65	64
Pop. Mean	1	1	1	1	1	1	1	1	1	1	1	1
Std. Deviation	0.3	0.3	0.3	0.3	0.3	0.3	0.3	0.3	0.3	0.3	0.3	0.3
% L processed/kg >= 0.8	83%	84%	87%	86%	85%	81%	80%	82%	81%	78%	81%	77%



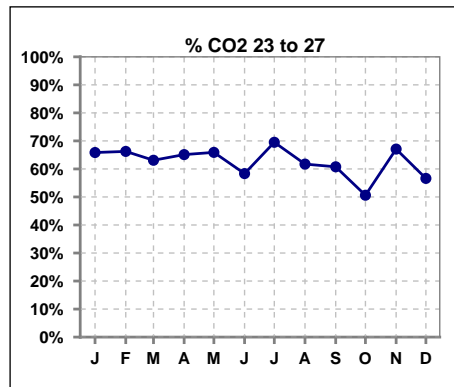
Methodology: a) All labs for 'Adequacy of Dialysis', 'Nutrition', 'Osteodystrophy', 'Anemia' and 'Diabetes' based on last value of month; b) BP's and #L processed are average of all values for month; c) Access data takes last access of month; d) Values for SGA and 'Infection Control' use most recent result.

I. ADEQUACY OF DIALYSIS - CONT.

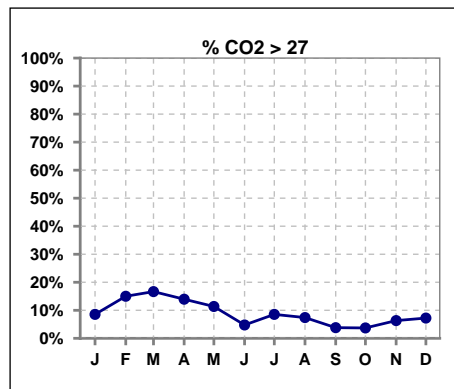
	Jan	Feb	Mar	Apr	May	Jun	Jul	Aug	Sep	Oct	Nov	Dec
# CO2	82	80	84	86	88	84	82	81	79	81	79	83
# CO2 < 23	21	15	17	18	20	31	18	25	28	37	21	30
Pop. Mean	24	25	25	25	24	23	24	24	23	23	24	24
Std. Deviation	2.62	2.81	2.75	2.81	2.58	2.67	2.38	2.63	2.31	2.60	2.66	2.78
% CO2 < 23	26%	19%	20%	21%	23%	37%	22%	31%	35%	46%	27%	36%



	Jan	Feb	Mar	Apr	May	Jun	Jul	Aug	Sep	Oct	Nov	Dec
# CO2	82	80	84	86	88	84	82	81	79	81	79	83
# CO2 23 to 27	54	53	53	56	58	49	57	50	48	41	53	47
Pop. Mean	24	25	25	25	24	23	24	24	23	23	24	24
Std. Deviation	2.62	2.81	2.75	2.81	2.58	2.67	2.38	2.63	2.31	2.60	2.66	2.78
% CO2 23 to 27	66%	66%	63%	65%	66%	58%	70%	62%	61%	51%	67%	57%



	Jan	Feb	Mar	Apr	May	Jun	Jul	Aug	Sep	Oct	Nov	Dec
# CO2	82	80	84	86	88	84	82	81	79	81	79	83
# CO2 > 27	7	12	14	12	10	4	7	6	3	3	5	6
Pop. Mean	24	25	25	25	24	23	24	24	23	23	24	24
Std. Deviation	2.62	2.81	2.75	2.81	2.58	2.67	2.38	2.63	2.31	2.60	2.66	2.78
% CO2 > 27	9%	15%	17%	14%	11%	5%	9%	7%	4%	4%	6%	7%

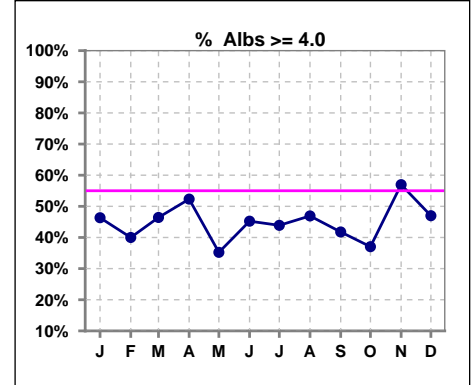


Methodology: a) All labs for 'Adequacy of Dialysis', 'Nutrition', 'Osteodystrophy', 'Anemia' and 'Diabetes' based on last value of month; b) BP's and #L processed are average of all values for month; c) Access data takes last access of month; d) Values for SGA and 'Infection Control' use most recent result.

*Albumin values use BCG method - as of July 2001

II. NUTRITION

	Jan	Feb	Mar	Apr	May	Jun	Jul	Aug	Sep	Oct	Nov	Dec
# Albumin	82	80	84	86	88	84	82	81	79	81	79	83
# Albumin >= 4.0	38	32	39	45	31	38	36	38	33	30	45	39
Pop. Mean	3.8	3.8	3.9	3.9	3.8	3.9	3.8	3.9	3.8	3.8	3.9	3.8
Std. Deviation	0.43	0.43	0.37	0.39	0.36	0.37	0.40	0.40	0.41	0.38	0.38	0.43
% Alb >= 4.0	46%	40%	46%	52%	35%	45%	44%	47%	42%	37%	57%	47%

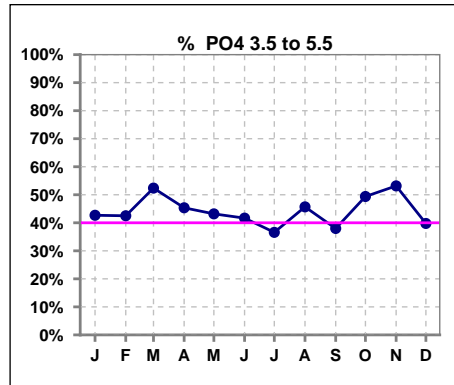


Methodology: a) All labs for 'Adequacy of Dialysis', 'Nutrition', 'Osteodystrophy', 'Anemia' and 'Diabetes' based on last value of month; b) BP's and #L processed are average of all values for month; c) Access data takes last access of month; d) Values for SGA and 'Infection Control' use most recent result.

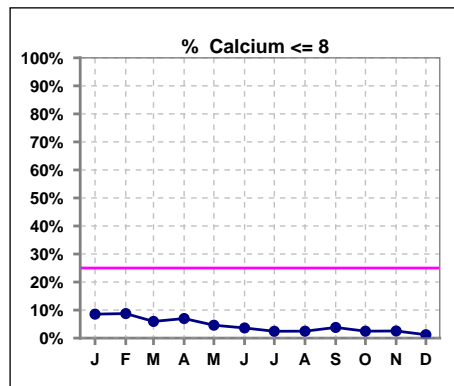
Lab methodology for PTH changed January 2012

III. OSTEODYSTROPHY

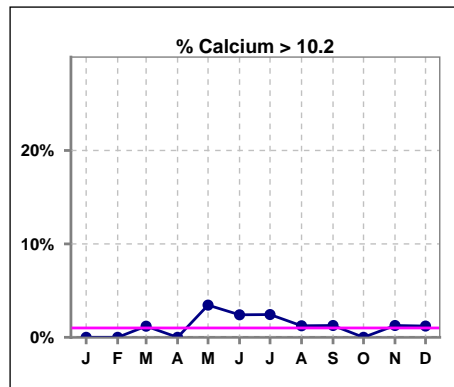
	Jan	Feb	Mar	Apr	May	Jun	Jul	Aug	Sep	Oct	Nov	Dec
# PO4	82	80	84	86	88	84	82	81	79	81	79	83
# PO4 3.5 to 5.5	35	34	44	39	38	35	30	37	30	40	42	33
Pop. Mean	5.8	6.1	5.7	5.8	5.9	6.2	5.9	5.9	6.1	5.9	5.8	5.9
Std. Deviation	2.00	1.98	1.95	2.19	1.94	2.02	1.76	1.89	1.78	2.05	1.99	1.95
% PO4 3.5 to 5.5	43%	43%	52%	45%	43%	42%	37%	46%	38%	49%	53%	40%



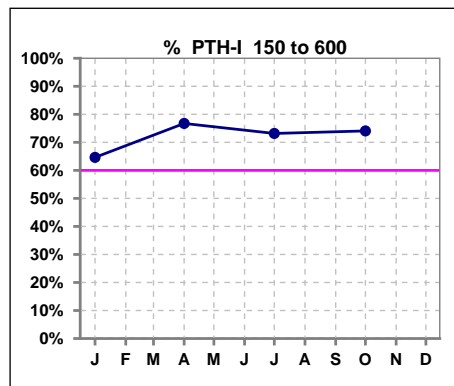
	Jan	Feb	Mar	Apr	May	Jun	Jul	Aug	Sep	Oct	Nov	Dec
# Calcium	82	80	84	86	87	83	82	81	79	81	79	83
# Calcium <= 8	7	7	5	6	4	3	2	2	3	2	2	1
Pop. Mean	9.1	9.2	9.3	9.2	9.3	9.3	9.2	9.3	9.2	9.2	9.3	9.3
Std. Deviation	0.70	0.67	0.69	0.65	0.60	0.62	0.60	0.52	0.61	0.50	0.52	0.48
% Calcium <= 8	9%	9%	6%	7%	5%	4%	2%	2%	4%	2%	3%	1%



	Jan	Feb	Mar	Apr	May	Jun	Jul	Aug	Sep	Oct	Nov	Dec
# Calcium	82	80	84	86	87	83	82	81	79	81	79	83
# Calcium > 10.2	0	0	1	0	3	2	2	1	1	0	1	1
Pop. Mean	9.1	9.2	9.3	9.2	9.3	9.3	9.2	9.3	9.2	9.2	9.3	9.3
Std. Deviation	0.70	0.67	0.69	0.65	0.60	0.62	0.60	0.52	0.61	0.50	0.52	0.48
% Calcium > 10.2	0%	0%	1%	0%	3%	2%	2%	1%	1%	0%	1%	1%



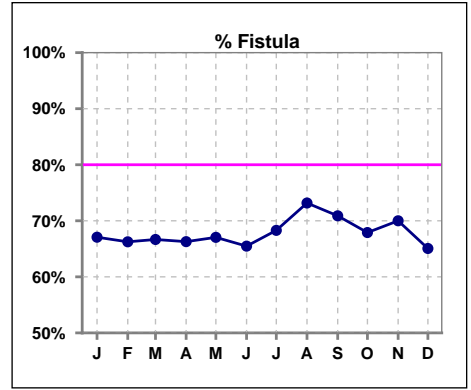
	Jan	Feb	Mar	Apr	May	Jun	Jul	Aug	Sep	Oct	Nov	Dec
# PTH-I	82			86			82			81		
# PTH-I 150 to 600	53			66			60			60		
Pop. Mean	603			486			420			403		
Std. Deviation	766			692			351			400		
% PTH-I 150 to 600	65%			77%			73%			74%		



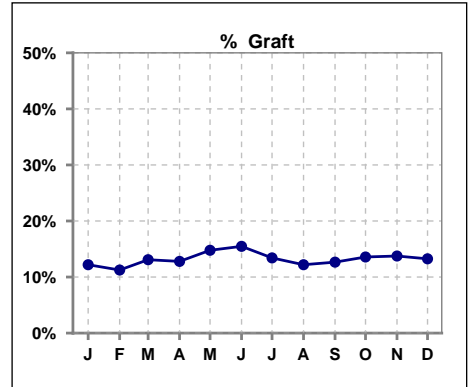
Methodology: a) All labs for 'Adequacy of Dialysis', 'Nutrition', 'Osteodystrophy', 'Anemia' and 'Diabetes' based on last value of month; b) BP's and #L processed are average of all values for month; c) Access data takes last access of month; d) Values for SGA and 'Infection Control' use most recent result.

IV. ACCESS

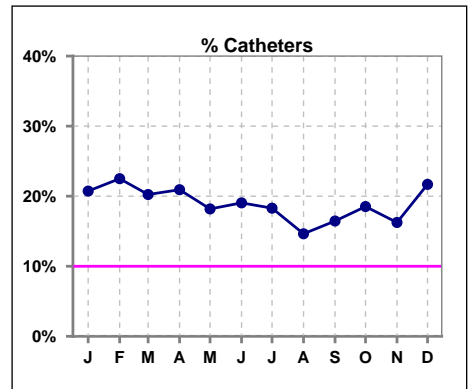
	Jan	Feb	Mar	Apr	May	Jun	Jul	Aug	Sep	Oct	Nov	Dec
# Access	82	80	84	86	88	84	82	82	79	81	80	83
# Fistula	55	53	56	57	59	55	56	60	56	55	56	54
% Fistula	67%	66%	67%	66%	67%	65%	68%	73%	71%	68%	70%	65%



	Jan	Feb	Mar	Apr	May	Jun	Jul	Aug	Sep	Oct	Nov	Dec
# Access	82	80	84	86	88	84	82	82	79	81	80	83
# Graft	10	9	11	11	13	13	11	10	10	11	11	11
% Graft	12%	11%	13%	13%	15%	15%	13%	12%	13%	14%	14%	13%



	Jan	Feb	Mar	Apr	May	Jun	Jul	Aug	Sep	Oct	Nov	Dec
# Access	82	80	84	86	88	84	82	82	79	81	80	83
# Catheters	17	18	17	18	16	16	15	12	13	15	13	18
% Catheters	21%	23%	20%	21%	18%	19%	18%	15%	16%	19%	16%	22%



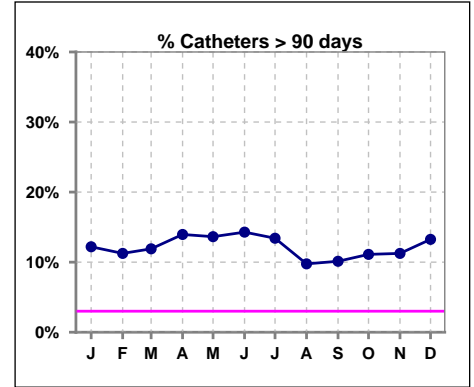
Methodology: a) All labs for 'Adequacy of Dialysis', 'Nutrition', 'Osteodystrophy', 'Anemia' and 'Diabetes' based on last value of month; b) BP's and #L processed are average of all values for month; c) Access data takes last access of month; d) Values for SGA and 'Infection Control' use most recent result.

IV. ACCESS - CONT.

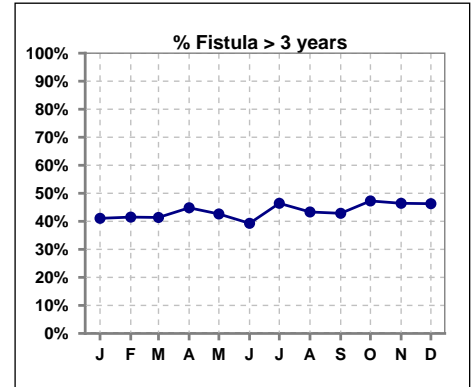
Catheters > 90 days

	Jan	Feb	Mar	Apr	May	Jun	Jul	Aug	Sep	Oct	Nov	Dec
# Access	82	80	84	86	88	84	82	82	79	81	80	83
# Catheters	10	9	10	12	12	12	11	8	8	9	9	11
% Catheters	12%	11%	12%	14%	14%	14%	13%	10%	10%	11%	11%	13%

Definition: Catheter in use on last treatment of the month



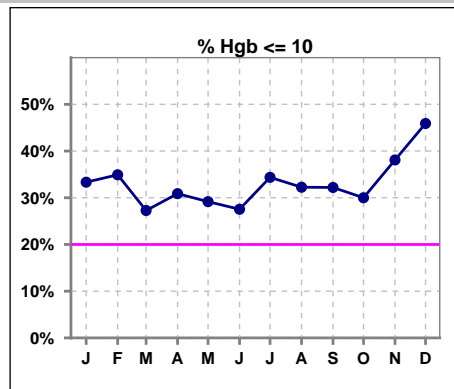
	Jan	Feb	Mar	Apr	May	Jun	Jul	Aug	Sep	Oct	Nov	Dec
# Fistula	56	53	58	58	61	56	56	60	56	55	56	54
# Fistula > 3 yrs	23	22	24	26	26	22	26	26	24	26	26	25
% Fistula > 3 yrs	41%	42%	41%	45%	43%	39%	46%	43%	43%	47%	46%	46%



V. ANEMIA

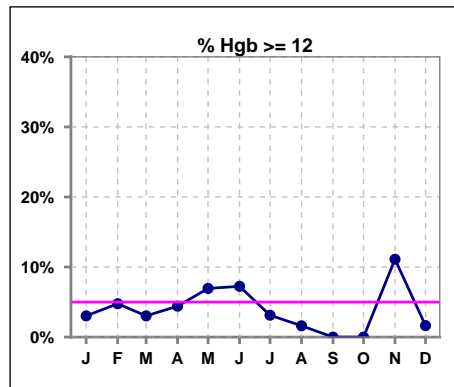
	Jan	Feb	Mar	Apr	May	Jun	Jul	Aug	Sep	Oct	Nov	Dec
# Hgb	66	63	66	68	72	69	64	62	59	60	63	61
# Hgb <= 10	22	22	18	21	21	19	22	20	19	18	24	28
Pop. Mean	10.4	10.4	10.5	10.5	10.5	10.6	10.3	10.3	10.1	10.3	10.5	10.0
Std. Deviation	1.4	1.5	1.2	1.1	1.2	1.3	1.1	1.2	1.3	1.0	1.3	1.3
% Hgb <= 10	33%	35%	27%	31%	29%	28%	34%	32%	32%	30%	38%	46%

Note: Excludes patients who received no ESA in month.



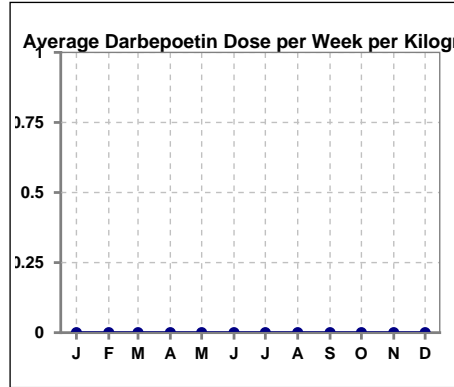
	Jan	Feb	Mar	Apr	May	Jun	Jul	Aug	Sep	Oct	Nov	Dec
# Hgb	66	63	66	68	72	69	64	62	59	60	63	61
# Hgb >= 12	2	3	2	3	5	5	2	1	0	0	7	1
Pop. Mean	10.4	10.4	10.5	10.5	10.5	10.6	10.3	10.3	10.1	10.3	10.5	10.0
Std. Deviation	1.4	1.5	1.2	1.1	1.2	1.3	1.1	1.2	1.3	1.0	1.3	1.3
% Hgb >= 12	3%	5%	3%	4%	7%	7%	3%	2%	0%	0%	11%	2%

Note: Excludes patients who received no ESA in month.



Average Darbepoetin Dose per Week per Kilogram

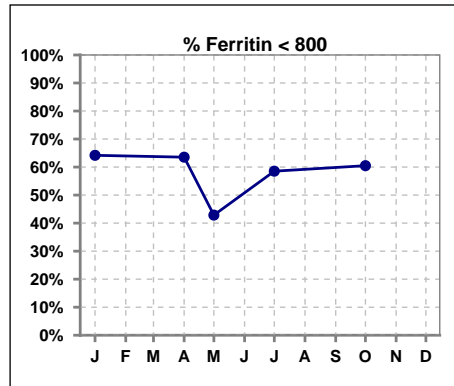
	Jan	Feb	Mar	Apr	May	Jun	Jul	Aug	Sep	Oct	Nov	Dec
# Average Darbepoetin	0	0	0	0	0	0	0	0	0	0	0	0



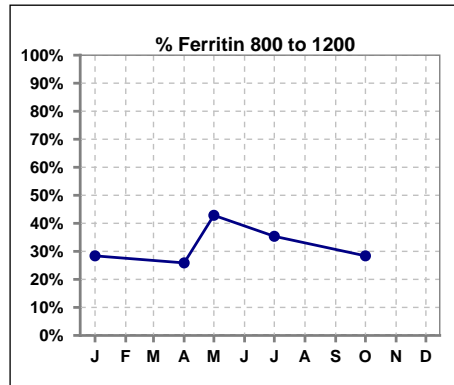
V. ANEMIA - CONT.

Iron Profile

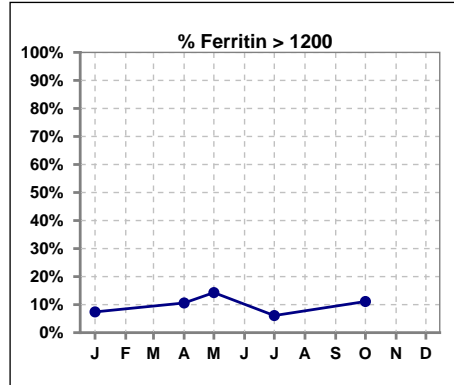
	Jan	Feb	Mar	Apr	May	Jun	Jul	Aug	Sep	Oct	Nov	Dec
# Ferritin	81			85	21		82			81		
# Ferritin < 800	52			54	9		48			49		
Pop. Mean	682			729	811		714			717		
Std. Deviation	353			349	371		339			391		
% Ferritin < 800	64%			64%	43%		59%			60%		



	Jan	Feb	Mar	Apr	May	Jun	Jul	Aug	Sep	Oct	Nov	Dec
# Ferritin	81			85	21		82			81		
# Ferritin 800 to 1200	23			22	9		29			23		
Pop. Mean	682			729	811		714			717		
Std. Deviation	353			349	371		339			391		
% Ferritin 800 to 1200	28%			26%	43%		35%			28%		



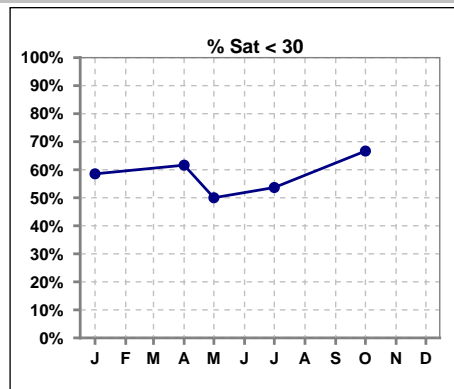
	Jan	Feb	Mar	Apr	May	Jun	Jul	Aug	Sep	Oct	Nov	Dec
# Ferritin	81			85	21		82			81		
# Ferritin > 1200	6			9	3		5			9		
Pop. Mean	682			729	811		714			717		
Std. Deviation	353			349	371		339			391		
% Ferritin > 1200	7%			11%	14%		6%			11%		



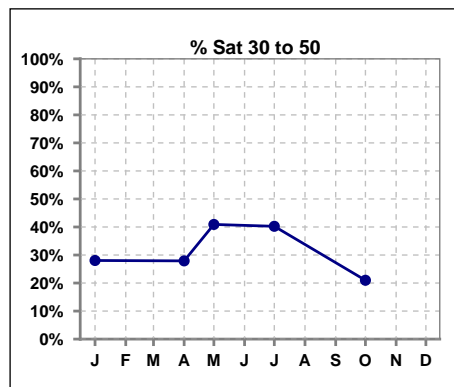
Methodology: a) All labs for 'Adequacy of Dialysis', 'Nutrition', 'Osteodystrophy', 'Anemia' and 'Diabetes' based on last value of month; b) BP's and #L processed are average of all values for month; c) Access data takes last access of month; d) Values for SGA and 'Infection Control' use most recent result.

V. ANEMIA - CONT.

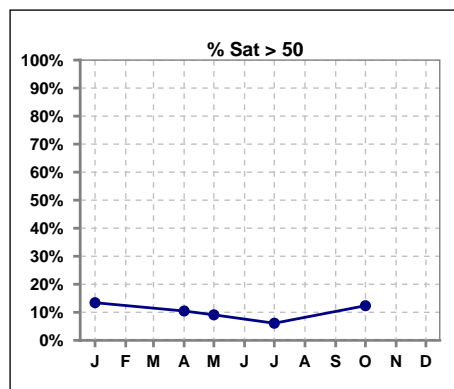
	Jan	Feb	Mar	Apr	May	Jun	Jul	Aug	Sep	Oct	Nov	Dec
# % Sat	82			86	22		82			81		
# % Sat < 30	48			53	11		44			54		
Pop. Mean	32			31	32		31			30		
Std. Deviation	16			17	18		13			19		
% % Sat < 30	59%			62%	50%		54%			67%		



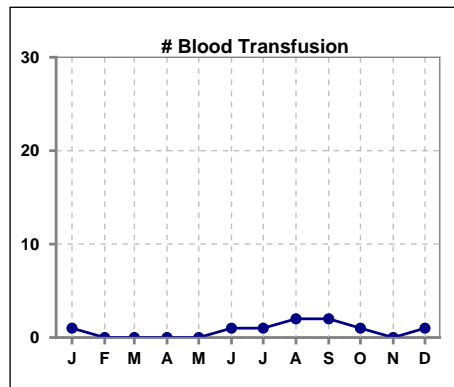
	Jan	Feb	Mar	Apr	May	Jun	Jul	Aug	Sep	Oct	Nov	Dec
# % Sat	82			86	22		82			81		
# % Sat 30 to 50	23			24	9		33			17		
Pop. Mean	32			31	32		31			30		
Std. Deviation	16			17	18		13			19		
% % Sat 30 to 50	28%			28%	41%		40%			21%		



	Jan	Feb	Mar	Apr	May	Jun	Jul	Aug	Sep	Oct	Nov	Dec
# % Sat	82			86	22		82			81		
# % Sat > 50	11			9	2		5			10		
Pop. Mean	32			31	32		31			30		
Std. Deviation	16			17	18		13			19		
% % Sat > 50	13%			10%	9%		6%			12%		



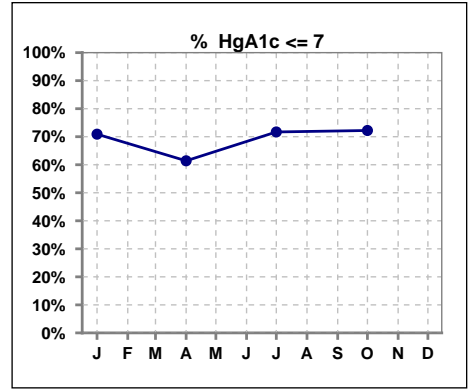
	Jan	Feb	Mar	Apr	May	Jun	Jul	Aug	Sep	Oct	Nov	Dec
# Patient	82	80	84	86	88	84	82	82	80	82	80	83
# Blood Transfusion	1	0	0	0	0	1	1	2	2	1	0	1



Methodology: a) All labs for 'Adequacy of Dialysis', 'Nutrition', 'Osteodystrophy', 'Anemia' and 'Diabetes' based on last value of month; b) BP's and #L processed are average of all values for month; c) Access data takes last access of month; d) Values for SGA and 'Infection Control' use most recent result.

VI. Diabetes

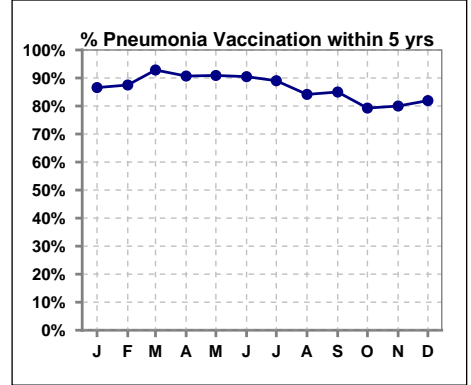
	Jan	Feb	Mar	Apr	May	Jun	Jul	Aug	Sep	Oct	Nov	Dec
# HgA1c	55			57			53			54		
# HgA1c <= 7	39			35			38			39		
Pop. Mean	6.6			6.8			6.7			6.7		
Std. Deviation	1.49			1.44			1.42			1.66		
% HgA1c <= 7	71%			61%			72%			72%		



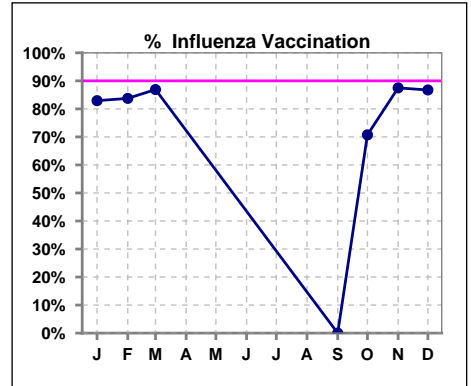
VII. Infection Control

Pneumonia vaccination within the past five years

	Jan	Feb	Mar	Apr	May	Jun	Jul	Aug	Sep	Oct	Nov	Dec
# Patient	82	80	84	86	88	84	82	82	80	82	80	83
# Pneumonia	71	70	78	78	80	76	73	69	68	65	64	68
% Pneumonia	87%	88%	93%	91%	91%	90%	89%	84%	85%	79%	80%	82%



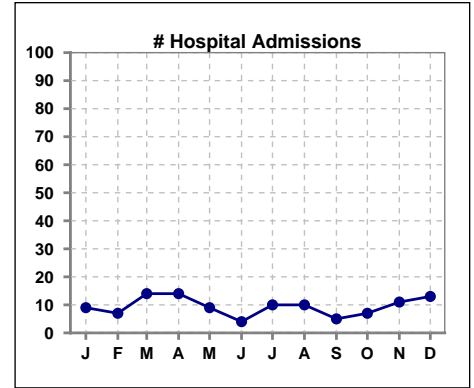
	Jan	Feb	Mar	Apr	May	Jun	Jul	Aug	Sep	Oct	Nov	Dec
# Patient	82	80	84						80	82	80	83
# Influenza	68	67	73						0	58	70	72
% Influenza	83%	84%	87%						0%	71%	88%	87%



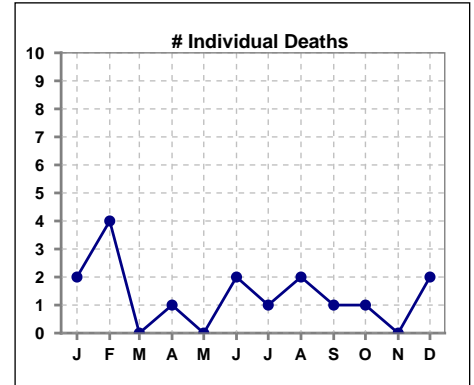
Methodology: a) All labs for 'Adequacy of Dialysis', 'Nutrition', 'Osteodystrophy', 'Anemia' and 'Diabetes' based on last value of month; b) BP's and #L processed are average of all values for month; c) Access data takes last access of month; d) Values for SGA and 'Infection Control' use most recent result.

VIII. Outcome measures

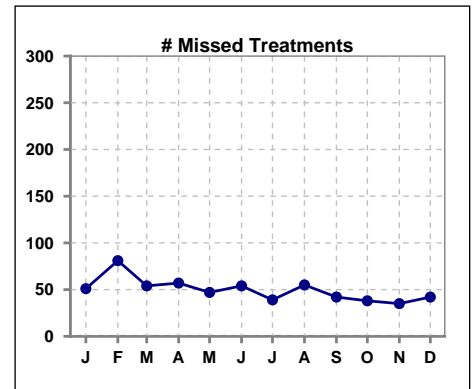
	Jan	Feb	Mar	Apr	May	Jun	Jul	Aug	Sep	Oct	Nov	Dec
# Patient	82	80	84	86	88	84	82	82	80	82	80	83
# Hospital Admissions	9	7	14	14	9	4	10	10	5	7	11	13



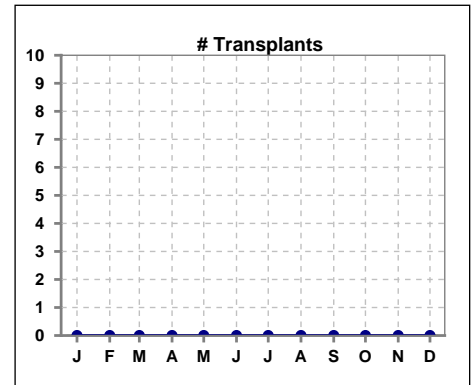
	Jan	Feb	Mar	Apr	May	Jun	Jul	Aug	Sep	Oct	Nov	Dec
# Patient	82	80	84	86	88	84	82	82	80	82	80	83
# Individual Deaths	2	4	0	1	0	2	1	2	1	1	0	2



	Jan	Feb	Mar	Apr	May	Jun	Jul	Aug	Sep	Oct	Nov	Dec
# Patient	82	80	84	86	88	84	82	82	80	82	80	83
# Missed Treatments	51	81	54	57	47	54	39	55	42	38	35	42



	Jan	Feb	Mar	Apr	May	Jun	Jul	Aug	Sep	Oct	Nov	Dec
# Patient	82	80	84	86	88	84	82	82	80	82	80	83
# Transplants	0	0	0	0	0	0	0	0	0	0	0	0



Methodology: a) All labs for 'Adequacy of Dialysis', 'Nutrition', 'Osteodystrophy', 'Anemia' and 'Diabetes' based on last value of month; b) BP's and #L processed are average of all values for month; c) Access data takes last access of month; d) Values for SGA and 'Infection Control' use most recent result.