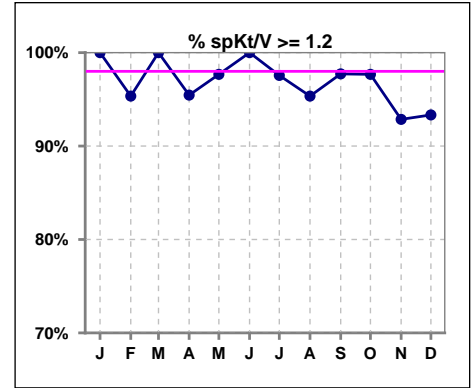
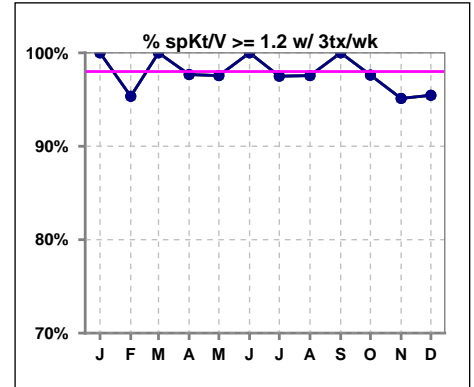


**I. ADEQUACY OF DIALYSIS**

	Jan	Feb	Mar	Apr	May	Jun	Jul	Aug	Sep	Oct	Nov	Dec
# spKt/V	43	43	42	44	43	42	41	43	44	43	42	45
# spKt/V >= 1.2	43	41	42	42	42	42	40	41	43	42	39	42
Pop. Mean	1.62	1.61	1.64	1.60	1.59	1.58	1.61	1.57	1.51	1.61	1.61	1.59
Std. Deviation	0.29	0.32	0.30	0.32	0.28	0.25	0.28	0.32	0.25	0.28	0.33	0.32
% spKt/V >= 1.2	100%	95%	100%	95%	98%	100%	98%	95%	98%	98%	93%	93%

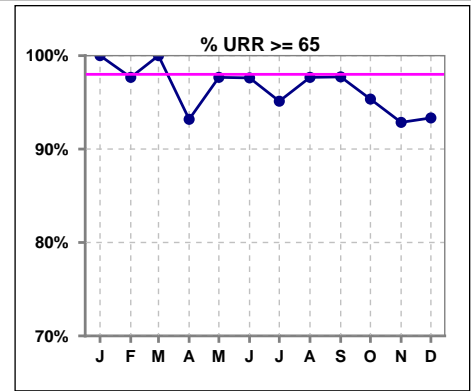


	Jan	Feb	Mar	Apr	May	Jun	Jul	Aug	Sep	Oct	Nov	Dec
# spKt/V w/ 3tx/wk	43	43	42	43	41	40	40	41	42	42	41	44
# spKt/V >= 1.2 w/3tx/wk	43	41	42	42	40	40	39	40	42	41	39	42
Pop. Mean	1.62	1.61	1.64	1.62	1.60	1.59	1.62	1.60	1.53	1.61	1.62	1.60
Std. Deviation	0.29	0.32	0.30	0.28	0.27	0.25	0.28	0.26	0.23	0.28	0.31	0.32
% >= 1.2 w/3tx/wk	100%	95%	100%	98%	98%	100%	98%	98%	100%	98%	95%	95%

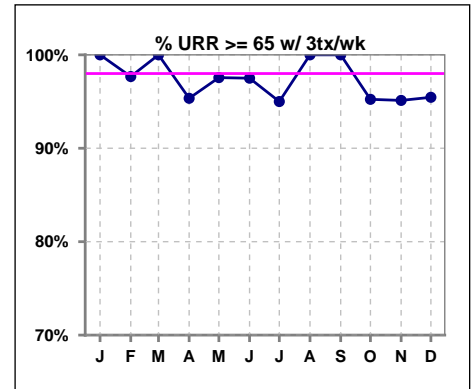


**I. ADEQUACY OF DIALYSIS - CONT.**

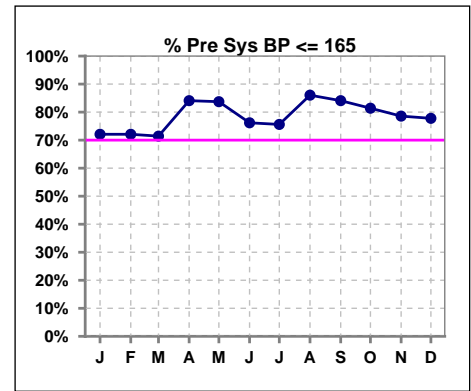
	Jan	Feb	Mar	Apr	May	Jun	Jul	Aug	Sep	Oct	Nov	Dec
# URR	43	43	42	44	43	42	41	43	44	43	42	45
# URR >= 65	43	42	42	41	42	41	39	42	43	41	39	42
Pop. Mean	75	75	76	74	74	75	75	73	73	75	74	74
Std. Deviation	5.49	5.94	5.31	7.25	5.64	4.84	5.39	8.47	5.68	5.18	6.85	6.56
% URR >= 65	100%	98%	100%	93%	98%	98%	95%	98%	98%	95%	93%	93%



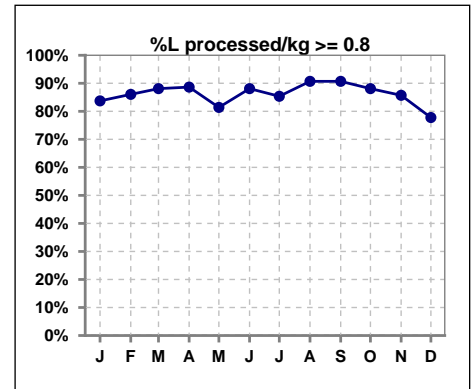
	Jan	Feb	Mar	Apr	May	Jun	Jul	Aug	Sep	Oct	Nov	Dec
# URR w/ 3tx/wk	43	43	42	43	41	40	40	41	42	42	41	44
# URR>=65 w/ 3tx/wk	43	42	42	41	40	39	38	41	42	40	39	42
Pop. Mean	75	75	76	75	75	75	75	74	73	75	75	74
Std. Deviation	5.49	5.94	5.31	5.59	5.50	4.91	5.32	5.10	4.79	5.23	6.29	6.33
% URR>=65 w/ 3tx/wk	100%	98%	100%	95%	98%	98%	95%	100%	100%	95%	95%	95%



	Jan	Feb	Mar	Apr	May	Jun	Jul	Aug	Sep	Oct	Nov	Dec
# Pre Sys BP	43	43	42	44	43	42	41	43	44	43	42	45
# Pre Sys BP <= 165	31	31	30	37	36	32	32	37	38	35	34	37
Pop. Mean	145	149	147	145	144	150	147	146	145	144	147	145
Std. Deviation	23.1	23.5	23.1	20.8	21.3	19.5	19.1	19.1	17.6	22.1	20.8	22.7
% Pre Sys BP <=165	72%	72%	71%	84%	84%	76%	76%	86%	84%	81%	79%	78%



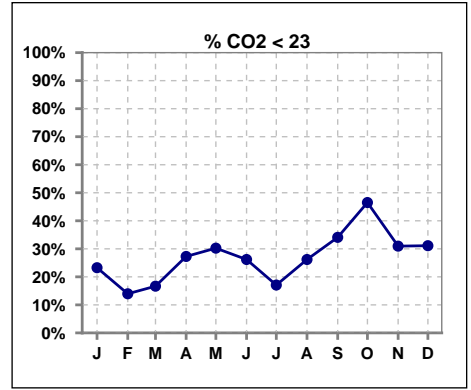
	Jan	Feb	Mar	Apr	May	Jun	Jul	Aug	Sep	Oct	Nov	Dec
# L processed/kg	43	43	42	44	43	42	41	43	43	42	42	45
# L processed/kg>=0.8	36	37	37	39	35	37	35	39	39	37	36	35
Pop. Mean	1	1	1	1	1	1	1	1	1	1	1	1
Std. Deviation	0.2	0.2	0.2	0.2	0.2	0.2	0.2	0.2	0.2	0.2	0.2	0.2
% L processed/kg>=0.8	84%	86%	88%	89%	81%	88%	85%	91%	91%	88%	86%	78%



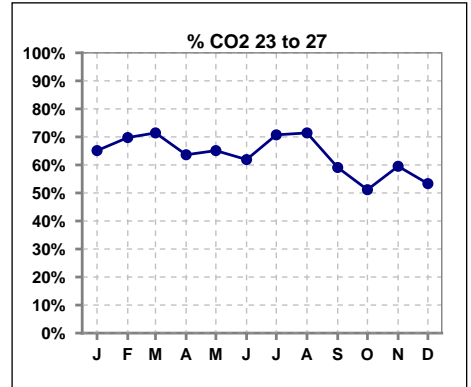
Methodology: a) All labs for 'Adequacy of Dialysis', 'Nutrition', 'Osteodystrophy', 'Anemia' and 'Diabetes' based on last value of month; b) BP's and #L processed are average of all values for month; c) Access data takes last access of month; d) Values for SGA and 'Infection Control' use most recent result.

**I. ADEQUACY OF DIALYSIS - CONT.**

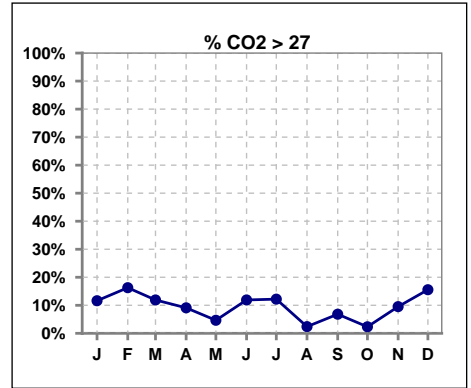
	Jan	Feb	Mar	Apr	May	Jun	Jul	Aug	Sep	Oct	Nov	Dec
# CO2	43	43	42	44	43	42	41	42	44	43	42	45
# CO2 < 23	10	6	7	12	13	11	7	11	15	20	13	14
Pop. Mean	24	26	25	25	24	24	25	24	24	23	24	25
Std. Deviation	2.77	3.65	3.39	3.03	2.77	3.16	3.62	2.21	2.80	2.86	2.69	4.28
<b>% CO2 &lt; 23</b>	<b>23%</b>	<b>14%</b>	<b>17%</b>	<b>27%</b>	<b>30%</b>	<b>26%</b>	<b>17%</b>	<b>26%</b>	<b>34%</b>	<b>47%</b>	<b>31%</b>	<b>31%</b>



	Jan	Feb	Mar	Apr	May	Jun	Jul	Aug	Sep	Oct	Nov	Dec
# CO2	43	43	42	44	43	42	41	42	44	43	42	45
# CO2 23 to 27	28	30	30	28	28	26	29	30	26	22	25	24
Pop. Mean	24	26	25	25	24	24	25	24	24	23	24	25
Std. Deviation	2.77	3.65	3.39	3.03	2.77	3.16	3.62	2.21	2.80	2.86	2.69	4.28
<b>% CO2 23 to 27</b>	<b>65%</b>	<b>70%</b>	<b>71%</b>	<b>64%</b>	<b>65%</b>	<b>62%</b>	<b>71%</b>	<b>71%</b>	<b>59%</b>	<b>51%</b>	<b>60%</b>	<b>53%</b>



	Jan	Feb	Mar	Apr	May	Jun	Jul	Aug	Sep	Oct	Nov	Dec
# CO2	43	43	42	44	43	42	41	42	44	43	42	45
# CO2 > 27	5	7	5	4	2	5	5	1	3	1	4	7
Pop. Mean	24	26	25	25	24	24	25	24	24	23	24	25
Std. Deviation	2.77	3.65	3.39	3.03	2.77	3.16	3.62	2.21	2.80	2.86	2.69	4.28
<b>% CO2 &gt; 27</b>	<b>12%</b>	<b>16%</b>	<b>12%</b>	<b>9%</b>	<b>5%</b>	<b>12%</b>	<b>12%</b>	<b>2%</b>	<b>7%</b>	<b>2%</b>	<b>10%</b>	<b>16%</b>

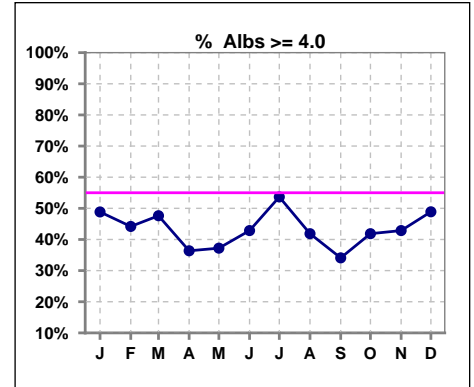


Methodology: a) All labs for 'Adequacy of Dialysis', 'Nutrition', 'Osteodystrophy', 'Anemia' and 'Diabetes' based on last value of month; b) BP's and #L processed are average of all values for month; c) Access data takes last access of month; d) Values for SGA and 'Infection Control' use most recent result.

\*Albumin values use BCG method - as of July 2001

**II. NUTRITION**

	Jan	Feb	Mar	Apr	May	Jun	Jul	Aug	Sep	Oct	Nov	Dec
# Albumin	43	43	42	44	43	42	41	43	44	43	42	45
# Albumin >= 4.0	21	19	20	16	16	18	22	18	15	18	18	22
Pop. Mean	3.9	4.0	3.9	3.8	3.8	3.8	3.9	3.8	3.8	3.8	3.9	3.9
Std. Deviation	0.30	0.38	0.32	0.38	0.35	0.39	0.39	0.43	0.30	0.35	0.37	0.42
% Alb >= 4.0	49%	44%	48%	36%	37%	43%	54%	42%	34%	42%	43%	49%

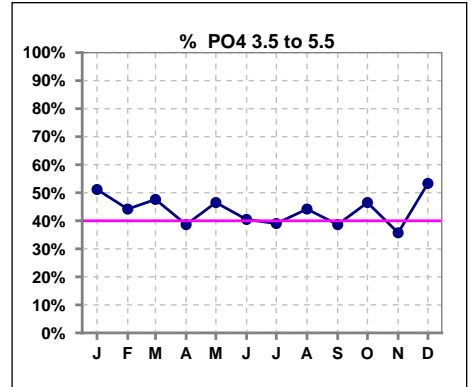


Methodology: a) All labs for 'Adequacy of Dialysis', 'Nutrition', 'Osteodystrophy', 'Anemia' and 'Diabetes' based on last value of month; b) BP's and #L processed are average of all values for month; c) Access data takes last access of month; d) Values for SGA and 'Infection Control' use most recent result.

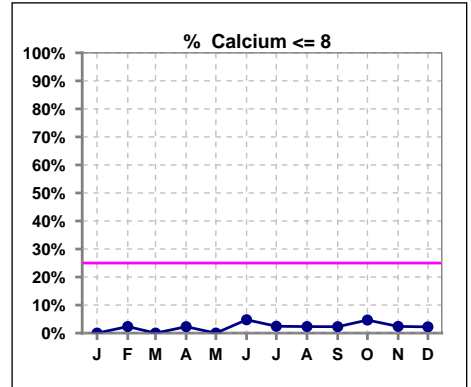
Lab methodology for PTH changed January 2012

**III. OSTEODYSTROPHY**

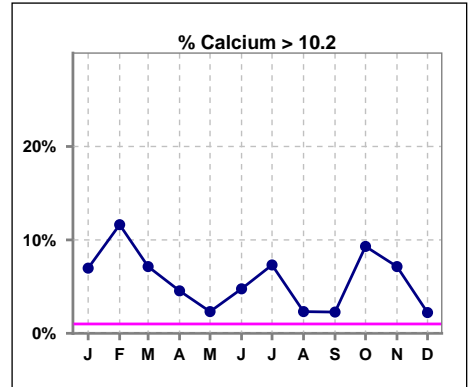
	Jan	Feb	Mar	Apr	May	Jun	Jul	Aug	Sep	Oct	Nov	Dec
# PO4	43	43	42	44	43	42	41	43	44	43	42	45
# PO4 3.5 to 5.5	22	19	20	17	20	17	16	19	17	20	15	24
Pop. Mean	5.8	5.8	6.0	6.2	6.1	6.0	6.0	6.0	6.0	5.9	6.0	6.0
Std. Deviation	1.80	1.82	1.73	1.85	1.68	1.68	1.49	1.56	1.41	1.47	1.67	1.96
% PO4 3.5 to 5.5	51%	44%	48%	39%	47%	40%	39%	44%	39%	47%	36%	53%



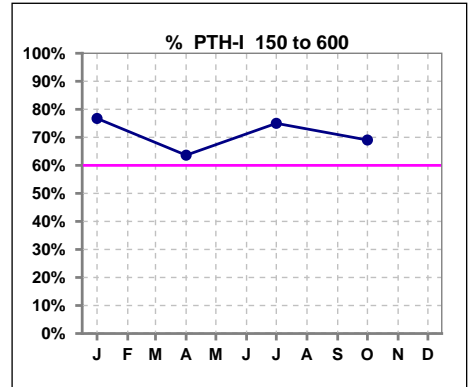
	Jan	Feb	Mar	Apr	May	Jun	Jul	Aug	Sep	Oct	Nov	Dec
# Calcium	43	43	42	44	43	42	41	43	44	43	42	45
# Calcium <= 8	0	1	0	1	0	2	1	1	1	2	1	1
Pop. Mean	9.4	9.4	9.5	9.3	9.3	9.4	9.4	9.3	9.3	9.2	9.4	9.3
Std. Deviation	0.57	0.72	0.55	0.67	0.53	0.64	0.61	0.54	0.51	0.63	0.54	0.53
% Calcium <= 8	0%	2%	0%	2%	0%	5%	2%	2%	2%	5%	2%	2%



	Jan	Feb	Mar	Apr	May	Jun	Jul	Aug	Sep	Oct	Nov	Dec
# Calcium	43	43	42	44	43	42	41	43	44	43	42	45
# Calcium > 10.2	3	5	3	2	1	2	3	1	1	4	3	1
Pop. Mean	9.4	9.4	9.5	9.3	9.3	9.4	9.4	9.3	9.3	9.2	9.4	9.3
Std. Deviation	0.57	0.72	0.55	0.67	0.53	0.64	0.61	0.54	0.51	0.63	0.54	0.53
% Calcium > 10.2	7%	12%	7%	5%	2%	5%	7%	2%	2%	9%	7%	2%



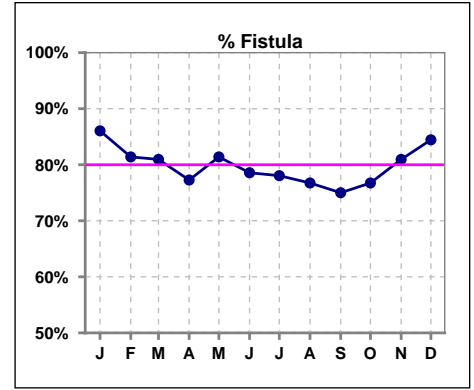
	Jan	Feb	Mar	Apr	May	Jun	Jul	Aug	Sep	Oct	Nov	Dec
# PTH-I	43			44			40			42		
# PTH-I 150 to 600	33			28			30			29		
Pop. Mean	374			406			335			402		
Std. Deviation	219			294			248			303		
% PTH-I 150 to 600	77%			64%			75%			69%		



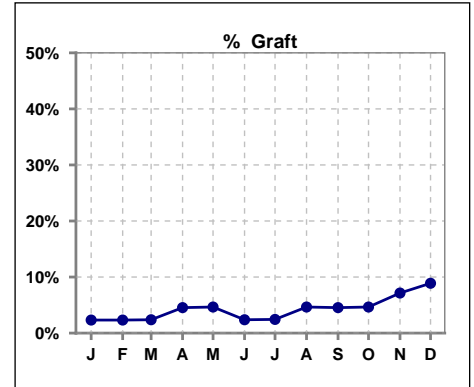
Methodology: a) All labs for 'Adequacy of Dialysis', 'Nutrition', 'Osteodystrophy', 'Anemia' and 'Diabetes' based on last value of month; b) BP's and #L processed are average of all values for month; c) Access data takes last access of month; d) Values for SGA and 'Infection Control' use most recent result.

**IV. ACCESS**

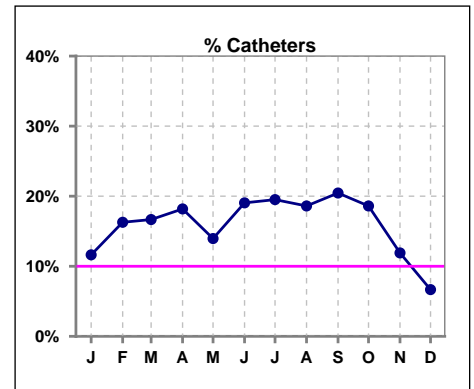
	Jan	Feb	Mar	Apr	May	Jun	Jul	Aug	Sep	Oct	Nov	Dec
<b># Access</b>	43	43	42	44	43	42	41	43	44	43	42	45
<b># Fistula</b>	37	35	34	34	35	33	32	33	33	33	34	38
<b>% Fistula</b>	86%	81%	81%	77%	81%	79%	78%	77%	75%	77%	81%	84%



	Jan	Feb	Mar	Apr	May	Jun	Jul	Aug	Sep	Oct	Nov	Dec
<b># Access</b>	43	43	42	44	43	42	41	43	44	43	42	45
<b># Graft</b>	1	1	1	2	2	1	1	2	2	2	3	4
<b>% Graft</b>	2%	2%	2%	5%	5%	2%	2%	5%	5%	5%	7%	9%



	Jan	Feb	Mar	Apr	May	Jun	Jul	Aug	Sep	Oct	Nov	Dec
<b># Access</b>	43	43	42	44	43	42	41	43	44	43	42	45
<b># Catheters</b>	5	7	7	8	6	8	8	8	9	8	5	3
<b>% Catheters</b>	12%	16%	17%	18%	14%	19%	20%	19%	20%	19%	12%	7%



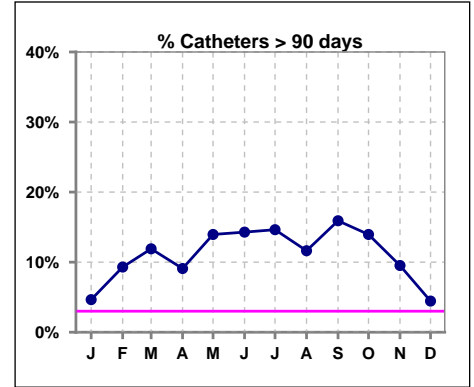
Methodology: a) All labs for 'Adequacy of Dialysis', 'Nutrition', 'Osteodystrophy', 'Anemia' and 'Diabetes' based on last value of month; b) BP's and #L processed are average of all values for month; c) Access data takes last access of month; d) Values for SGA and 'Infection Control' use most recent result.

**IV. ACCESS - CONT.**

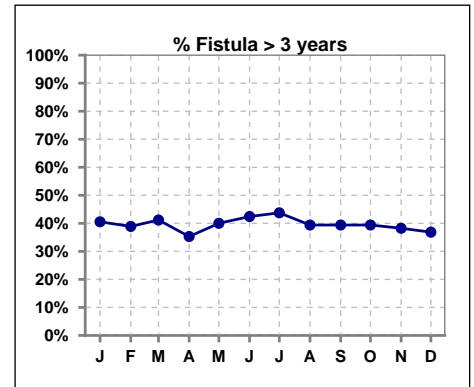
**Catheters > 90 days**

	Jan	Feb	Mar	Apr	May	Jun	Jul	Aug	Sep	Oct	Nov	Dec
<b># Access</b>	43	43	42	44	43	42	41	43	44	43	42	45
<b># Catheters</b>	2	4	5	4	6	6	6	5	7	6	4	2
<b>% Catheters</b>	5%	9%	12%	9%	14%	14%	15%	12%	16%	14%	10%	4%

**Definition:** Catheter in use on last treatment of the month



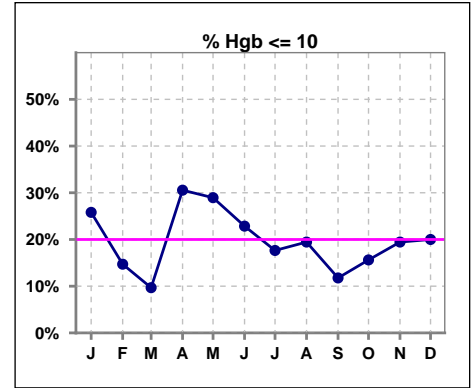
	Jan	Feb	Mar	Apr	May	Jun	Jul	Aug	Sep	Oct	Nov	Dec
<b># Fistula</b>	37	36	34	34	35	33	32	33	33	33	34	38
<b># Fistula &gt; 3 yrs</b>	15	14	14	12	14	14	14	13	13	13	13	14
<b>% Fistula &gt; 3 yrs</b>	41%	39%	41%	35%	40%	42%	44%	39%	39%	39%	38%	37%



**V. ANEMIA**

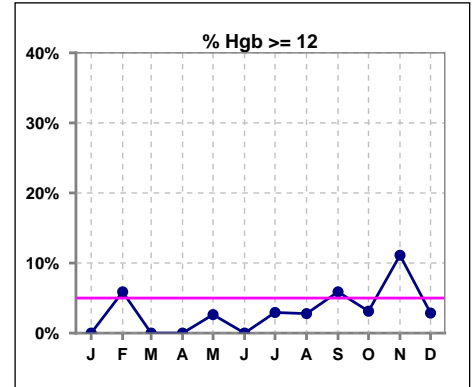
	Jan	Feb	Mar	Apr	May	Jun	Jul	Aug	Sep	Oct	Nov	Dec
# Hgb	31	34	31	36	38	35	34	36	34	32	36	35
# Hgb <= 10	8	5	3	11	11	8	6	7	4	5	7	7
Pop. Mean	10.4	10.7	10.8	10.4	10.5	10.5	10.6	10.6	10.9	10.5	10.7	10.6
Std. Deviation	0.7	1.0	0.8	0.8	1.0	0.9	0.8	1.0	1.1	1.0	1.1	1.0
% Hgb <= 10	26%	15%	10%	31%	29%	23%	18%	19%	12%	16%	19%	20%

Note: Excludes patients who received no ESA in month.



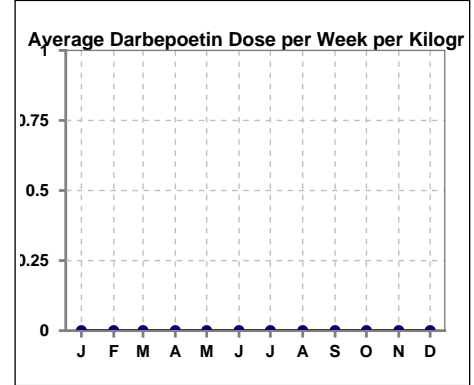
	Jan	Feb	Mar	Apr	May	Jun	Jul	Aug	Sep	Oct	Nov	Dec
# Hgb	31	34	31	36	38	35	34	36	34	32	36	35
# Hgb >= 12	0	2	0	0	1	0	1	1	2	1	4	1
Pop. Mean	10.4	10.7	10.8	10.4	10.5	10.5	10.6	10.6	10.9	10.5	10.7	10.6
Std. Deviation	0.7	1.0	0.8	0.8	1.0	0.9	0.8	1.0	1.1	1.0	1.1	1.0
% Hgb >= 12	0%	6%	0%	0%	3%	0%	3%	3%	6%	3%	11%	3%

Note: Excludes patients who received no ESA in month.



**Average Darbepoetin Dose per Week per Kilogram**

	Jan	Feb	Mar	Apr	May	Jun	Jul	Aug	Sep	Oct	Nov	Dec
# Average Darbepoetin	0	0	0	0	0	0	0	0	0	0	0	0

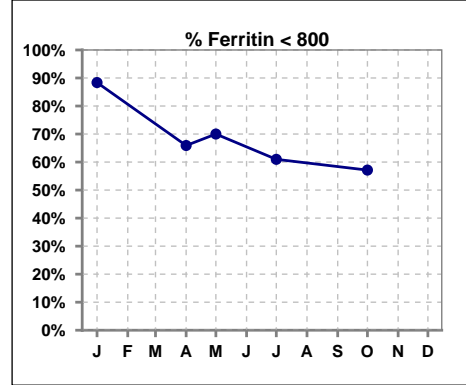




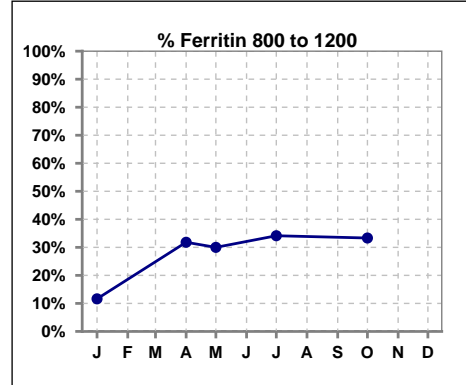
**V. ANEMIA - CONT.**

**Iron Profile**

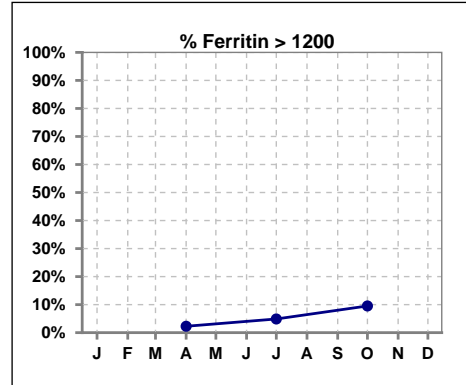
	Jan	Feb	Mar	Apr	May	Jun	Jul	Aug	Sep	Oct	Nov	Dec
# Ferritin	43			44	10		41			42		
# Ferritin < 800	38			29	7		25			24		
Pop. Mean	488			662	649		734			737		
Std. Deviation	233			280	302		336			339		
<b>% Ferritin &lt; 800</b>	<b>88%</b>			<b>66%</b>	<b>70%</b>		<b>61%</b>			<b>57%</b>		



	Jan	Feb	Mar	Apr	May	Jun	Jul	Aug	Sep	Oct	Nov	Dec
# Ferritin	43			44	10		41			42		
# Ferritin 800 to 1200	5			14	3		14			14		
Pop. Mean	488			662	649		734			737		
Std. Deviation	233			280	302		336			339		
<b>% Ferritin 800 to 1200</b>	<b>12%</b>			<b>32%</b>	<b>30%</b>		<b>34%</b>			<b>33%</b>		

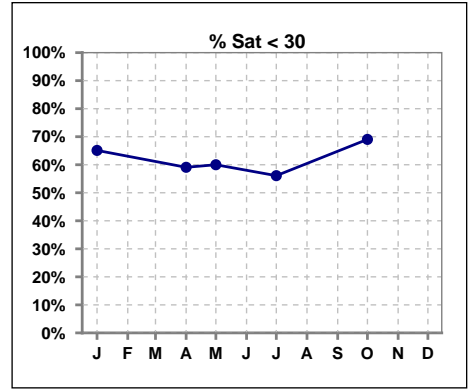


	Jan	Feb	Mar	Apr	May	Jun	Jul	Aug	Sep	Oct	Nov	Dec
# Ferritin	43			44	10		41			42		
# Ferritin > 1200				1			2			4		
Pop. Mean	488			662	649		734			737		
Std. Deviation	233			280	302		336			339		
<b>% Ferritin &gt; 1200</b>				<b>2%</b>			<b>5%</b>			<b>10%</b>		

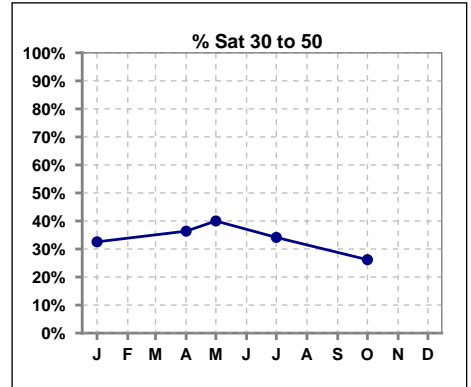


**V. ANEMIA - CONT.**

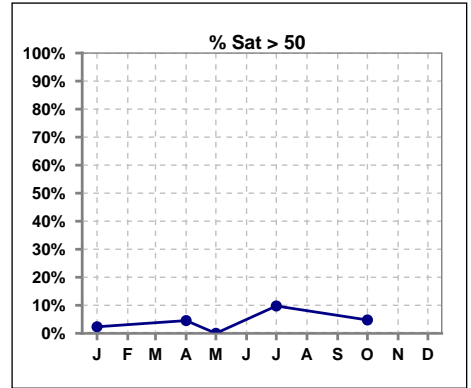
	Jan	Feb	Mar	Apr	May	Jun	Jul	Aug	Sep	Oct	Nov	Dec
# % Sat	43			44	10		41			42		
# % Sat < 30	28			26	6		23			29		
Pop. Mean	29			29	26		31			28		
Std. Deviation	11			11	8		17			12		
<b>% % Sat &lt; 30</b>	<b>65%</b>			<b>59%</b>	<b>60%</b>		<b>56%</b>			<b>69%</b>		



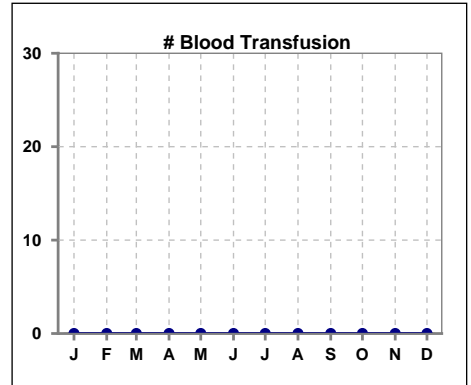
	Jan	Feb	Mar	Apr	May	Jun	Jul	Aug	Sep	Oct	Nov	Dec
# % Sat	43			44	10		41			42		
# % Sat 30 to 50	14			16	4		14			11		
Pop. Mean	29			29	26		31			28		
Std. Deviation	11			11	8		17			12		
<b>% % Sat 30 to 50</b>	<b>33%</b>			<b>36%</b>	<b>40%</b>		<b>34%</b>			<b>26%</b>		



	Jan	Feb	Mar	Apr	May	Jun	Jul	Aug	Sep	Oct	Nov	Dec
# % Sat	43			44	10		41			42		
# % Sat > 50	1			2	0		4			2		
Pop. Mean	29			29	26		31			28		
Std. Deviation	11			11	8		17			12		
<b>% % Sat &gt; 50</b>	<b>2%</b>			<b>5%</b>	<b>0%</b>		<b>10%</b>			<b>5%</b>		



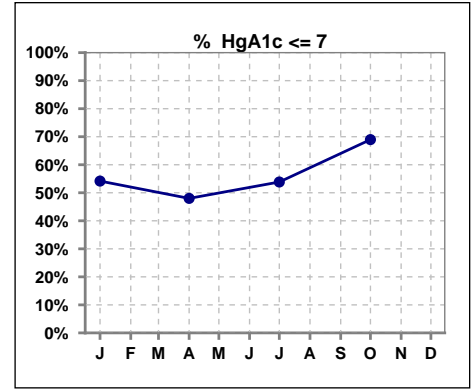
	Jan	Feb	Mar	Apr	May	Jun	Jul	Aug	Sep	Oct	Nov	Dec
# Patient	43	43	42	45	43	43	41	43	44	44	43	45
# Blood Transfusion	0	0	0	0	0	0	0	0	0	0	0	0



Methodology: a) All labs for 'Adequacy of Dialysis', 'Nutrition', 'Osteodystrophy', 'Anemia' and 'Diabetes' based on last value of month; b) BP's and #L processed are average of all values for month; c) Access data takes last access of month; d) Values for SGA and 'Infection Control' use most recent result.

**VI. Diabetes**

	Jan	Feb	Mar	Apr	May	Jun	Jul	Aug	Sep	Oct	Nov	Dec
# HgA1c	24			25			26			29		
# HgA1c <= 7	13			12			14			20		
Pop. Mean	7.0			7.1			6.9			6.7		
Std. Deviation	1.83			1.69			1.45			1.42		
<b>% HgA1c &lt;= 7</b>	<b>54%</b>			<b>48%</b>			<b>54%</b>			<b>69%</b>		

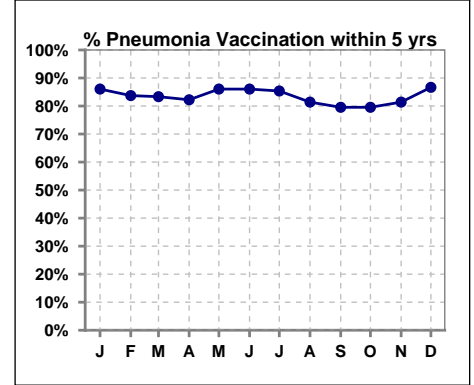


Methodology: a) All labs for 'Adequacy of Dialysis', 'Nutrition', 'Osteodystrophy', 'Anemia' and 'Diabetes' based on last value of month; b) BP's and #L processed are average of all values for month; c) Access data takes last access of month; d) Values for SGA and 'Infection Control' use most recent result.

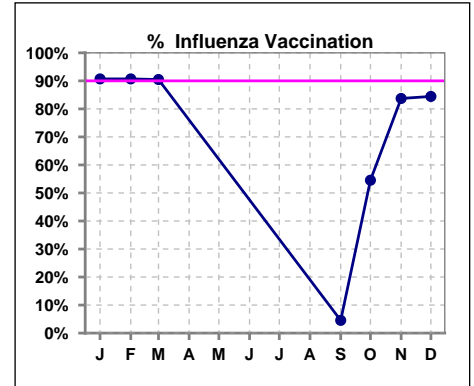
**VII. Infection Control**

**Pneumonia vaccination within the past five years**

	Jan	Feb	Mar	Apr	May	Jun	Jul	Aug	Sep	Oct	Nov	Dec
<b># Patient</b>	43	43	42	45	43	43	41	43	44	44	43	45
<b># Pneumonia</b>	37	36	35	37	37	37	35	35	35	35	35	39
<b>% Pneumonia</b>	86%	84%	83%	82%	86%	86%	85%	81%	80%	80%	81%	87%



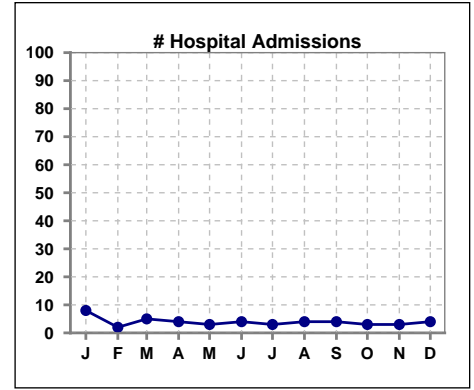
	Jan	Feb	Mar	Apr	May	Jun	Jul	Aug	Sep	Oct	Nov	Dec
<b># Patient</b>	43	43	42						44	44	43	45
<b># Influenza</b>	39	39	38						2	24	36	38
<b>% Influenza</b>	91%	91%	90%						5%	55%	84%	84%



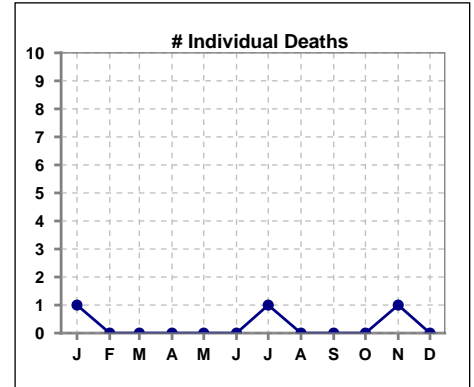
Methodology: a) All labs for 'Adequacy of Dialysis', 'Nutrition', 'Osteodystrophy', 'Anemia' and 'Diabetes' based on last value of month; b) BP's and #L processed are average of all values for month; c) Access data takes last access of month; d) Values for SGA and 'Infection Control' use most recent result.

**VIII. Outcome measures**

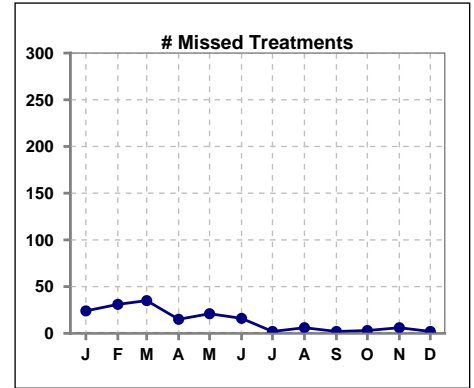
	Jan	Feb	Mar	Apr	May	Jun	Jul	Aug	Sep	Oct	Nov	Dec
<b># Patient</b>	43	43	42	45	43	43	41	43	44	44	43	45
<b># Hospital Admissions</b>	8	2	5	4	3	4	3	4	4	3	3	4



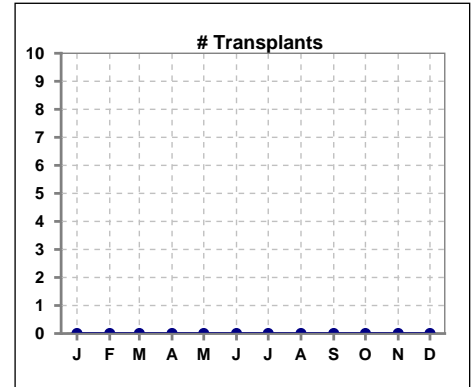
	Jan	Feb	Mar	Apr	May	Jun	Jul	Aug	Sep	Oct	Nov	Dec
<b># Patient</b>	43	43	42	45	43	43	41	43	44	44	43	45
<b># Individual Deaths</b>	1	0	0	0	0	0	1	0	0	0	1	0



	Jan	Feb	Mar	Apr	May	Jun	Jul	Aug	Sep	Oct	Nov	Dec
<b># Patient</b>	43	43	42	45	43	43	41	43	44	44	43	45
<b># Missed Treatments</b>	24	31	35	15	21	16	2	6	2	3	6	2



	Jan	Feb	Mar	Apr	May	Jun	Jul	Aug	Sep	Oct	Nov	Dec
<b># Patient</b>	43	43	42	45	43	43	41	43	44	44	43	45
<b># Transplants</b>	0	0	0	0	0	0	0	0	0	0	0	0



Methodology: a) All labs for 'Adequacy of Dialysis', 'Nutrition', 'Osteodystrophy', 'Anemia' and 'Diabetes' based on last value of month; b) BP's and #L processed are average of all values for month; c) Access data takes last access of month; d) Values for SGA and 'Infection Control' use most recent result.