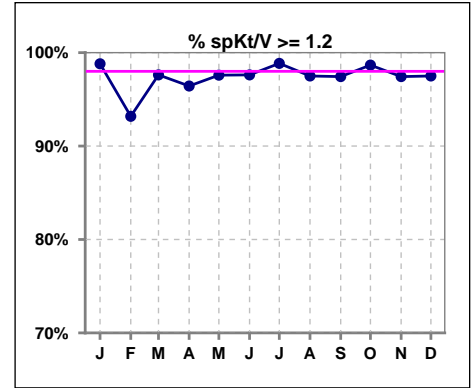
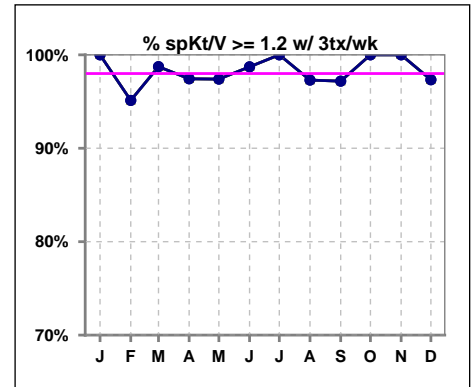


**I. ADEQUACY OF DIALYSIS**

	Jan	Feb	Mar	Apr	May	Jun	Jul	Aug	Sep	Oct	Nov	Dec
# spKt/V	84	88	84	84	83	84	87	80	78	75	78	80
# spKt/V >= 1.2	83	82	82	81	81	82	86	78	76	74	76	78
Pop. Mean	1.56	1.55	1.56	1.53	1.60	1.58	1.85	1.90	1.98	1.66	1.62	1.58
Std. Deviation	0.21	0.27	0.25	0.24	0.27	0.22	1.35	1.41	1.63	0.26	0.25	0.26
% spKt/V >= 1.2	99%	93%	98%	96%	98%	98%	99%	98%	97%	99%	97%	98%

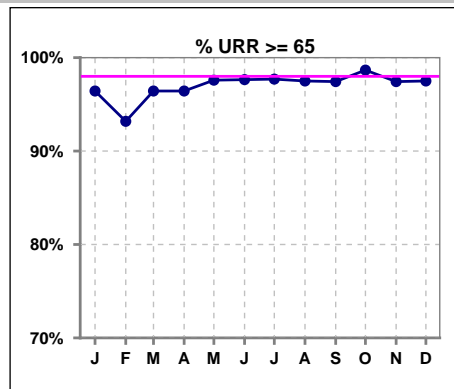


	Jan	Feb	Mar	Apr	May	Jun	Jul	Aug	Sep	Oct	Nov	Dec
# spKt/V w/ 3tx/wk	78	82	79	78	77	78	81	74	71	69	73	75
# spKt/V >= 1.2 w/3tx/wk	78	78	78	76	75	77	81	72	69	69	73	73
Pop. Mean	1.56	1.56	1.56	1.53	1.60	1.58	1.61	1.64	1.72	1.67	1.63	1.58
Std. Deviation	0.21	0.25	0.23	0.23	0.27	0.20	0.22	0.25	0.90	0.24	0.23	0.26
% >= 1.2 w/3tx/wk	100%	95%	99%	97%	97%	99%	100%	97%	97%	100%	100%	97%

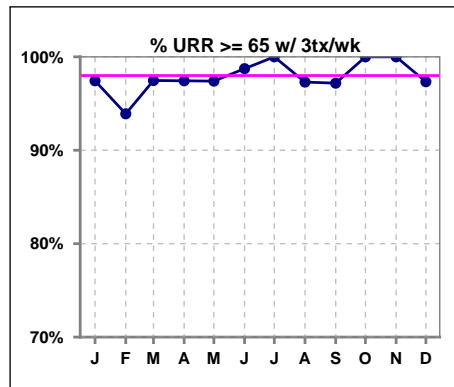


**I. ADEQUACY OF DIALYSIS - CONT.**

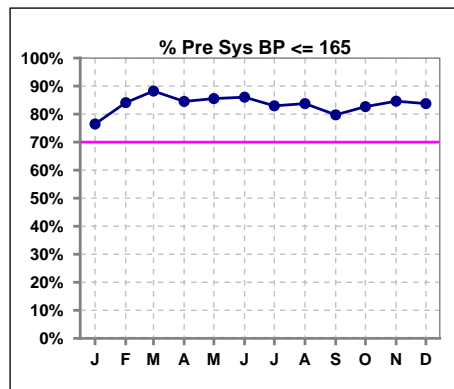
	Jan	Feb	Mar	Apr	May	Jun	Jul	Aug	Sep	Oct	Nov	Dec
# URR	84	88	84	84	83	85	87	80	78	75	78	80
# URR >= 65	81	82	81	81	81	83	85	78	76	74	76	78
Pop. Mean	74	73	74	73	75	75	74	75	75	76	75	74
Std. Deviation	4.59	6.71	5.24	5.20	5.80	4.99	5.70	5.19	5.26	5.21	5.01	5.75
% URR >= 65	96%	93%	96%	96%	98%	98%	98%	98%	97%	99%	97%	98%



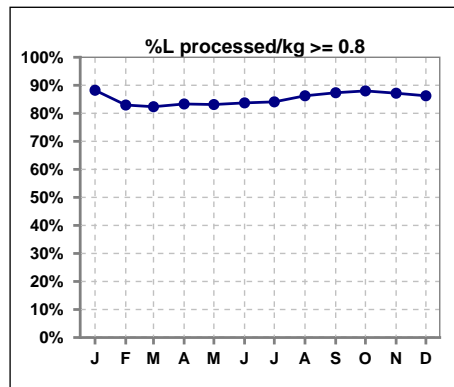
	Jan	Feb	Mar	Apr	May	Jun	Jul	Aug	Sep	Oct	Nov	Dec
# URR w/ 3tx/wk	78	82	79	78	77	79	81	74	71	69	73	75
# URR>=65 w/ 3tx/wk	76	77	77	76	75	78	81	72	69	69	73	73
Pop. Mean	74	74	74	74	75	75	75	75	75	76	75	74
Std. Deviation	4.37	6.02	4.93	4.98	5.79	4.73	4.47	5.07	5.22	4.69	4.47	5.75
% URR>=65 w/ 3tx/wk	97%	94%	97%	97%	97%	99%	100%	97%	97%	100%	100%	97%



	Jan	Feb	Mar	Apr	May	Jun	Jul	Aug	Sep	Oct	Nov	Dec
# Pre Sys BP	85	88	85	84	83	86	88	80	79	75	78	80
# Pre Sys BP <= 165	65	74	75	71	71	74	74	68	63	62	67	68
Pop. Mean	149	146	143	144	144	143	143	144	147	147	146	147
Std. Deviation	22.3	20.1	19.6	19.5	18.7	19.8	20.9	19.8	18.6	17.9	17.9	20.5
% Pre Sys BP <=165	76%	84%	88%	85%	86%	86%	83%	84%	80%	83%	85%	84%



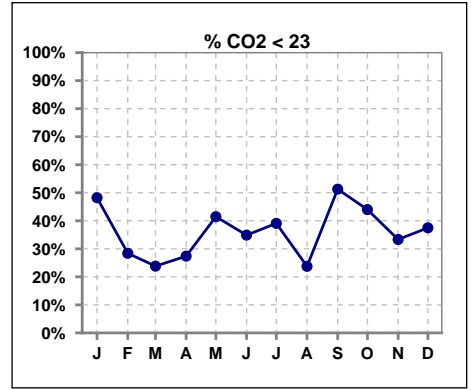
	Jan	Feb	Mar	Apr	May	Jun	Jul	Aug	Sep	Oct	Nov	Dec
# L processed/kg	85	88	85	84	83	86	88	80	79	75	78	80
# L processed/kg>=0.8	75	73	70	70	69	72	74	69	69	66	68	69
Pop. Mean	1	1	1	1	1	1	1	1	1	1	1	1
Std. Deviation	0.2	0.2	0.3	0.3	0.3	0.3	0.2	0.3	0.3	0.3	0.2	0.3
% L processed/kg>=0.8	88%	83%	82%	83%	83%	84%	84%	86%	87%	88%	87%	86%



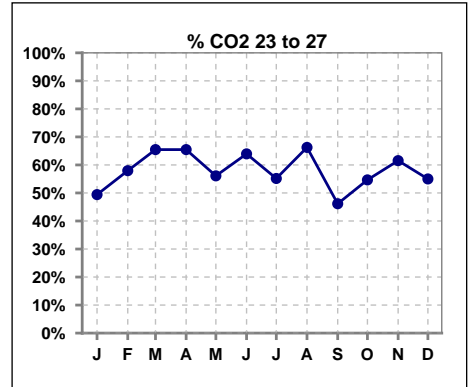
Methodology: a) All labs for 'Adequacy of Dialysis', 'Nutrition', 'Osteodystrophy', 'Anemia' and 'Diabetes' based on last value of month; b) BP's and #L processed are average of all values for month; c) Access data takes last access of month; d) Values for SGA and 'Infection Control' use most recent result.

**I. ADEQUACY OF DIALYSIS - CONT.**

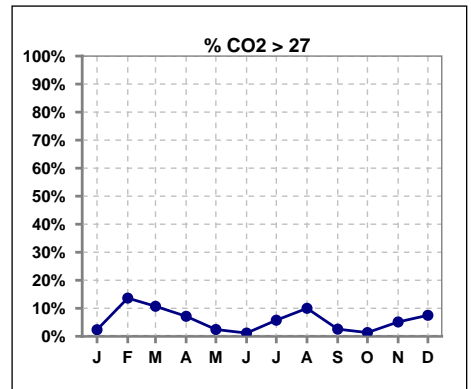
	Jan	Feb	Mar	Apr	May	Jun	Jul	Aug	Sep	Oct	Nov	Dec
# CO2	85	88	84	84	82	86	87	80	78	75	78	80
# CO2 < 23	41	25	20	23	34	30	34	19	40	33	26	30
Pop. Mean	23	24	24	24	23	23	23	24	22	23	23	23
Std. Deviation	2.65	3.82	3.20	2.38	2.86	2.65	2.66	3.05	3.15	3.04	2.94	3.37
% CO2 < 23	48%	28%	24%	27%	41%	35%	39%	24%	51%	44%	33%	38%



	Jan	Feb	Mar	Apr	May	Jun	Jul	Aug	Sep	Oct	Nov	Dec
# CO2	85	88	84	84	82	86	87	80	78	75	78	80
# CO2 23 to 27	42	51	55	55	46	55	48	53	36	41	48	44
Pop. Mean	23	24	24	24	23	23	23	24	22	23	23	23
Std. Deviation	2.65	3.82	3.20	2.38	2.86	2.65	2.66	3.05	3.15	3.04	2.94	3.37
% CO2 23 to 27	49%	58%	65%	65%	56%	64%	55%	66%	46%	55%	62%	55%



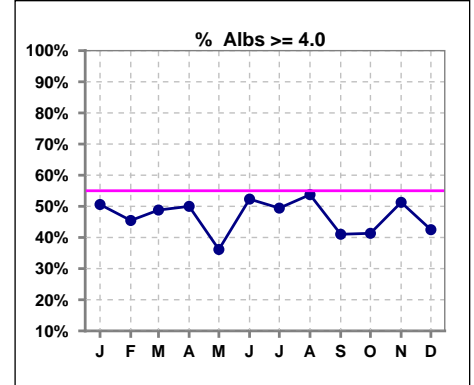
	Jan	Feb	Mar	Apr	May	Jun	Jul	Aug	Sep	Oct	Nov	Dec
# CO2	85	88	84	84	82	86	87	80	78	75	78	80
# CO2 > 27	2	12	9	6	2	1	5	8	2	1	4	6
Pop. Mean	23	24	24	24	23	23	23	24	22	23	23	23
Std. Deviation	2.65	3.82	3.20	2.38	2.86	2.65	2.66	3.05	3.15	3.04	2.94	3.37
% CO2 > 27	2%	14%	11%	7%	2%	1%	6%	10%	3%	1%	5%	8%



\*Albumin values use BCG method - as of July 2001

**II. NUTRITION**

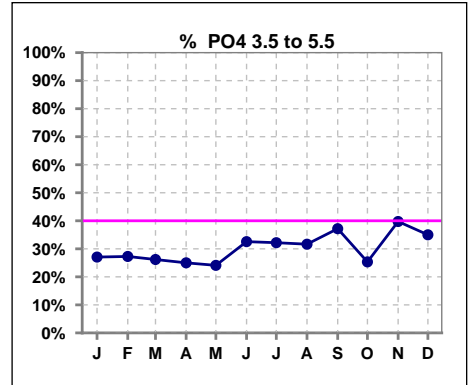
	Jan	Feb	Mar	Apr	May	Jun	Jul	Aug	Sep	Oct	Nov	Dec
# Albumin	85	88	84	84	83	86	87	80	78	75	78	80
# Albumin >= 4.0	43	40	41	42	30	45	43	43	32	31	40	34
Pop. Mean	3.9	3.9	3.9	3.9	3.8	3.9	3.9	3.9	3.9	3.9	3.9	3.9
Std. Deviation	0.36	0.37	0.37	0.39	0.39	0.37	0.38	0.30	0.34	0.34	0.33	0.45
% Alb >= 4.0	51%	45%	49%	50%	36%	52%	49%	54%	41%	41%	51%	43%



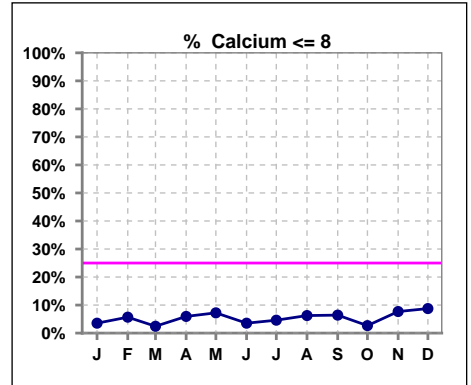
Lab methodology for PTH changed January 2012

**III. OSTEODYSTROPHY**

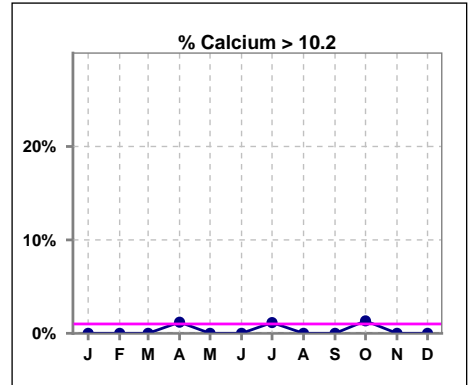
	Jan	Feb	Mar	Apr	May	Jun	Jul	Aug	Sep	Oct	Nov	Dec
# PO4	85	88	84	84	83	86	87	79	78	75	78	80
# PO4 3.5 to 5.5	23	24	22	21	20	28	28	25	29	19	31	28
Pop. Mean	6.6	6.8	6.8	6.5	6.7	6.8	6.6	6.1	6.2	6.3	6.5	6.7
Std. Deviation	2.12	2.34	2.24	1.93	1.93	1.85	2.20	1.90	1.93	1.92	2.09	2.20
% PO4 3.5 to 5.5	27%	27%	26%	25%	24%	33%	32%	32%	37%	25%	40%	35%



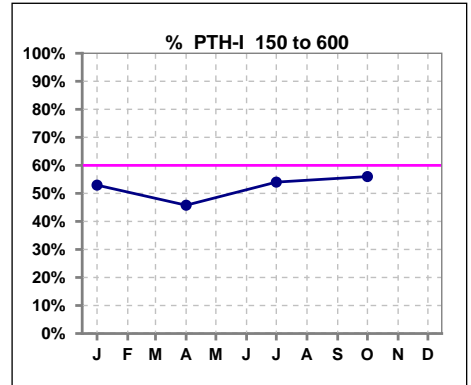
	Jan	Feb	Mar	Apr	May	Jun	Jul	Aug	Sep	Oct	Nov	Dec
# Calcium	85	88	82	84	83	85	87	80	78	75	78	80
# Calcium <= 8	3	5	2	5	6	3	4	5	5	2	6	7
Pop. Mean	9.2	9.2	9.3	9.3	9.1	9.3	9.2	9.4	9.2	9.2	9.1	9.0
Std. Deviation	0.63	0.68	0.60	0.61	0.65	0.55	0.65	0.64	0.61	0.59	0.66	0.68
% Calcium <= 8	4%	6%	2%	6%	7%	4%	5%	6%	6%	3%	8%	9%



	Jan	Feb	Mar	Apr	May	Jun	Jul	Aug	Sep	Oct	Nov	Dec
# Calcium	85	88	82	84	83	85	87	80	78	75	78	80
# Calcium > 10.2	0	0	0	1	0	0	1	0	0	1	0	0
Pop. Mean	9.2	9.2	9.3	9.3	9.1	9.3	9.2	9.4	9.2	9.2	9.1	9.0
Std. Deviation	0.63	0.68	0.60	0.61	0.65	0.55	0.65	0.64	0.61	0.59	0.66	0.68
% Calcium > 10.2	0%	0%	0%	1%	0%	0%	1%	0%	0%	1%	0%	0%



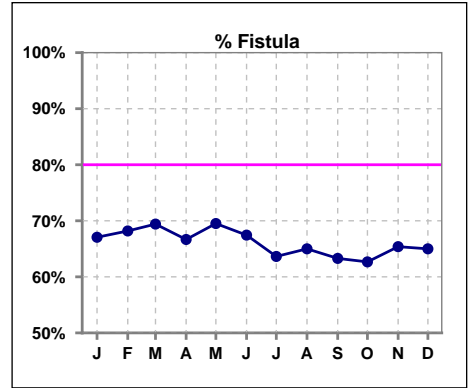
	Jan	Feb	Mar	Apr	May	Jun	Jul	Aug	Sep	Oct	Nov	Dec
# PTH-I	85			83			87			75		
# PTH-I 150 to 600	45			38			47			42		
Pop. Mean	664			594			648			644		
Std. Deviation	546			576			578			673		
% PTH-I 150 to 600	53%			46%			54%			56%		



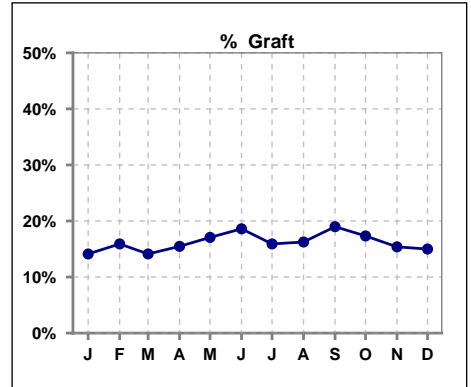
Methodology: a) All labs for 'Adequacy of Dialysis', 'Nutrition', 'Osteodystrophy', 'Anemia' and 'Diabetes' based on last value of month; b) BP's and #L processed are average of all values for month; c) Access data takes last access of month; d) Values for SGA and 'Infection Control' use most recent result.

**IV. ACCESS**

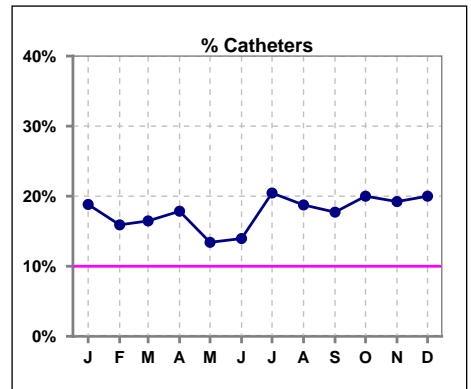
	Jan	Feb	Mar	Apr	May	Jun	Jul	Aug	Sep	Oct	Nov	Dec
# Access	85	88	85	84	82	86	88	80	79	75	78	80
# Fistula	57	60	59	56	57	58	56	52	50	47	51	52
% Fistula	67%	68%	69%	67%	70%	67%	64%	65%	63%	63%	65%	65%



	Jan	Feb	Mar	Apr	May	Jun	Jul	Aug	Sep	Oct	Nov	Dec
# Access	85	88	85	84	82	86	88	80	79	75	78	80
# Graft	12	14	12	13	14	16	14	13	15	13	12	12
% Graft	14%	16%	14%	15%	17%	19%	16%	16%	19%	17%	15%	15%



	Jan	Feb	Mar	Apr	May	Jun	Jul	Aug	Sep	Oct	Nov	Dec
# Access	85	88	85	84	82	86	88	80	79	75	78	80
# Catheters	16	14	14	15	11	12	18	15	14	15	15	16
% Catheters	19%	16%	16%	18%	13%	14%	20%	19%	18%	20%	19%	20%



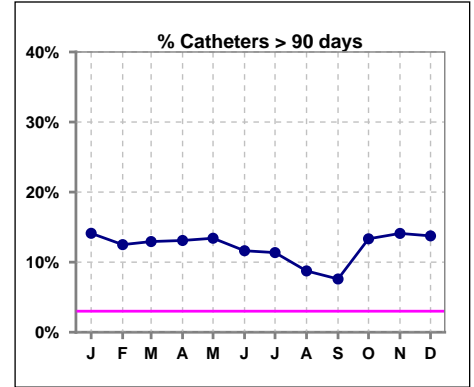
Methodology: a) All labs for 'Adequacy of Dialysis', 'Nutrition', 'Osteodystrophy', 'Anemia' and 'Diabetes' based on last value of month; b) BP's and #L processed are average of all values for month; c) Access data takes last access of month; d) Values for SGA and 'Infection Control' use most recent result.

**IV. ACCESS - CONT.**

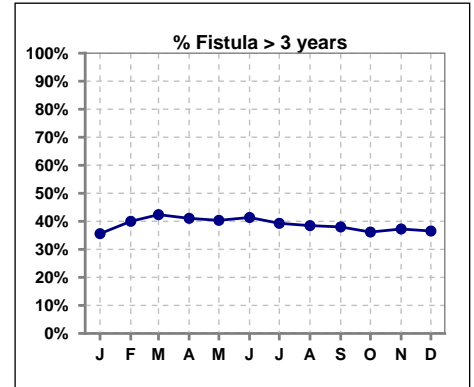
**Catheters > 90 days**

	Jan	Feb	Mar	Apr	May	Jun	Jul	Aug	Sep	Oct	Nov	Dec
<b># Access</b>	85	88	85	84	82	86	88	80	79	75	78	80
<b># Catheters</b>	12	11	11	11	11	10	10	7	6	10	11	11
<b>% Catheters</b>	14%	13%	13%	13%	13%	12%	11%	9%	8%	13%	14%	14%

**Definition:** Catheter in use on last treatment of the month



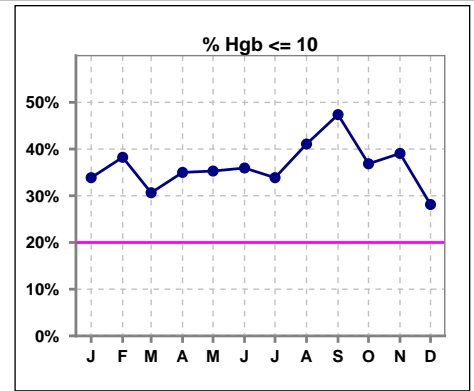
	Jan	Feb	Mar	Apr	May	Jun	Jul	Aug	Sep	Oct	Nov	Dec
<b># Fistula</b>	59	60	59	56	57	58	56	52	50	47	51	52
<b># Fistula &gt; 3 yrs</b>	21	24	25	23	23	24	22	20	19	17	19	19
<b>% Fistula &gt; 3 yrs</b>	36%	40%	42%	41%	40%	41%	39%	38%	38%	36%	37%	37%



**V. ANEMIA**

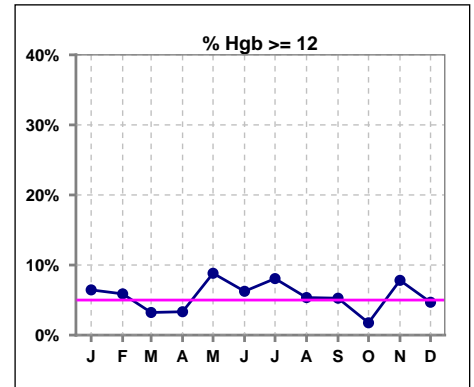
	Jan	Feb	Mar	Apr	May	Jun	Jul	Aug	Sep	Oct	Nov	Dec
# Hgb	62	68	62	60	68	64	62	56	57	57	64	64
# Hgb <= 10	21	26	19	21	24	23	21	23	27	21	25	18
Pop. Mean	10.2	10.3	10.5	10.2	10.4	10.4	10.2	10.2	10.0	10.3	10.3	10.4
Std. Deviation	1.4	1.3	1.3	1.4	1.4	1.2	1.7	1.4	1.1	0.9	1.3	1.1
% Hgb <= 10	34%	38%	31%	35%	35%	36%	34%	41%	47%	37%	39%	28%

Note: Excludes patients who received no ESA in month.



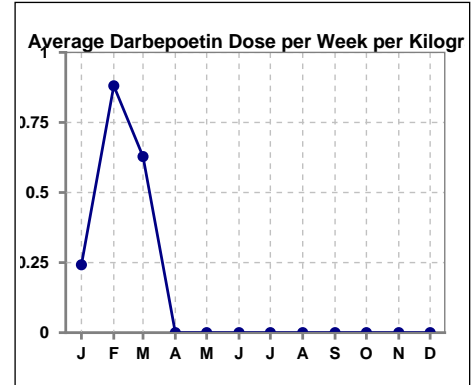
	Jan	Feb	Mar	Apr	May	Jun	Jul	Aug	Sep	Oct	Nov	Dec
# Hgb	62	68	62	60	68	64	62	56	57	57	64	64
# Hgb >= 12	4	4	2	2	6	4	5	3	3	1	5	3
Pop. Mean	10.2	10.3	10.5	10.2	10.4	10.4	10.2	10.2	10.0	10.3	10.3	10.4
Std. Deviation	1.4	1.3	1.3	1.4	1.4	1.2	1.7	1.4	1.1	0.9	1.3	1.1
% Hgb >= 12	6%	6%	3%	3%	9%	6%	8%	5%	5%	2%	8%	5%

Note: Excludes patients who received no ESA in month.



**Average Darbepoetin Dose per Week per Kilogram**

	Jan	Feb	Mar	Apr	May	Jun	Jul	Aug	Sep	Oct	Nov	Dec
# Average Darbepoetin	.2	.9	.6	0	0	0	0	0	0	0	0	0

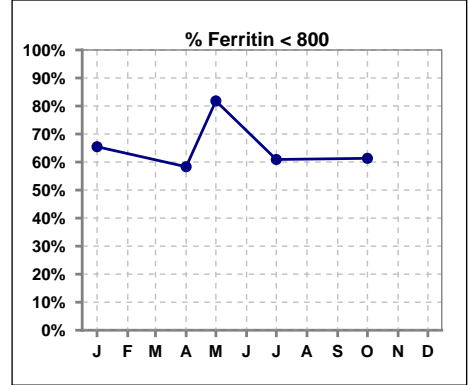




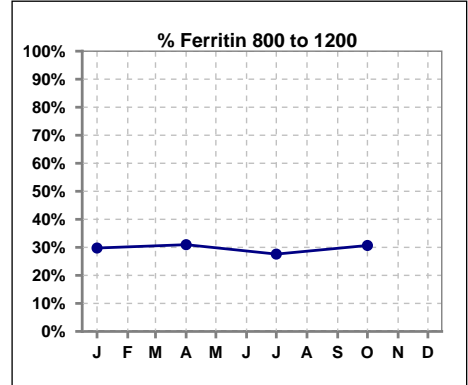
**V. ANEMIA - CONT.**

**Iron Profile**

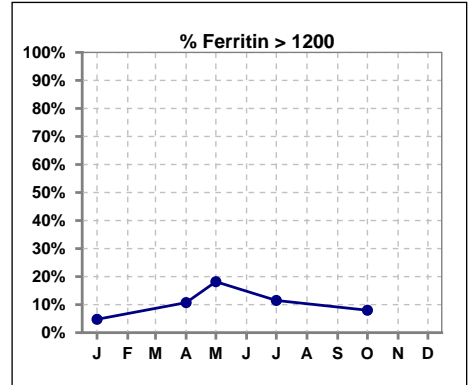
	Jan	Feb	Mar	Apr	May	Jun	Jul	Aug	Sep	Oct	Nov	Dec
# Ferritin	84			84	11		87			75		
# Ferritin < 800	55			49	9		53			46		
Pop. Mean	682			734	686		729			693		
Std. Deviation	335			354	421		415			358		
<b>% Ferritin &lt; 800</b>	<b>65%</b>			<b>58%</b>	<b>82%</b>		<b>61%</b>			<b>61%</b>		



	Jan	Feb	Mar	Apr	May	Jun	Jul	Aug	Sep	Oct	Nov	Dec
# Ferritin	84			84	11		87			75		
# Ferritin 800 to 1200	25			26			24			23		
Pop. Mean	682			734	686		729			693		
Std. Deviation	335			354	421		415			358		
<b>% Ferritin 800 to 1200</b>	<b>30%</b>			<b>31%</b>			<b>28%</b>			<b>31%</b>		

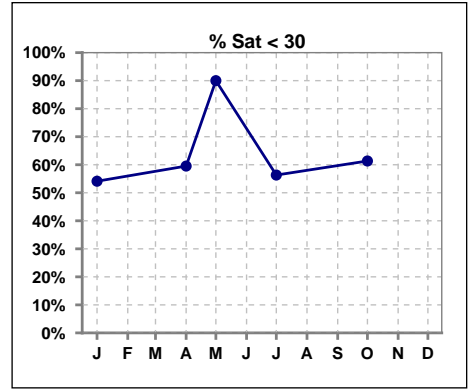


	Jan	Feb	Mar	Apr	May	Jun	Jul	Aug	Sep	Oct	Nov	Dec
# Ferritin	84			84	11		87			75		
# Ferritin > 1200	4			9	2		10			6		
Pop. Mean	682			734	686		729			693		
Std. Deviation	335			354	421		415			358		
<b>% Ferritin &gt; 1200</b>	<b>5%</b>			<b>11%</b>	<b>18%</b>		<b>11%</b>			<b>8%</b>		

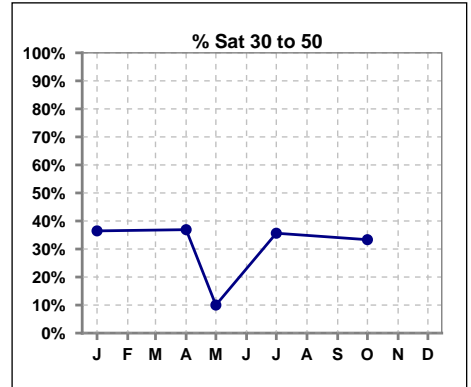


**V. ANEMIA - CONT.**

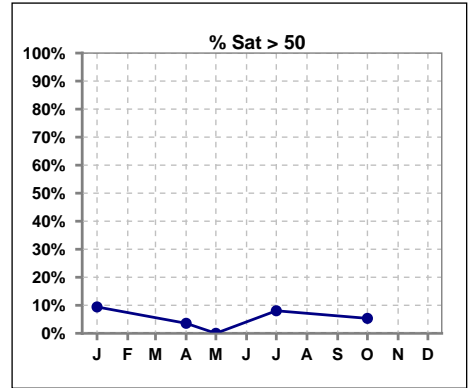
	Jan	Feb	Mar	Apr	May	Jun	Jul	Aug	Sep	Oct	Nov	Dec
# % Sat	85			84	10		87			75		
# % Sat < 30	46			50	9		49			46		
Pop. Mean	31			28	22		29			29		
Std. Deviation	14			14	7		15			14		
<b>% % Sat &lt; 30</b>	<b>54%</b>			<b>60%</b>	<b>90%</b>		<b>56%</b>			<b>61%</b>		



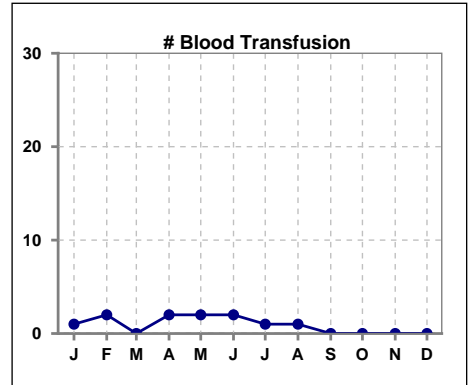
	Jan	Feb	Mar	Apr	May	Jun	Jul	Aug	Sep	Oct	Nov	Dec
# % Sat	85			84	10		87			75		
# % Sat 30 to 50	31			31	1		31			25		
Pop. Mean	31			28	22		29			29		
Std. Deviation	14			14	7		15			14		
<b>% % Sat 30 to 50</b>	<b>36%</b>			<b>37%</b>	<b>10%</b>		<b>36%</b>			<b>33%</b>		



	Jan	Feb	Mar	Apr	May	Jun	Jul	Aug	Sep	Oct	Nov	Dec
# % Sat	85			84	10		87			75		
# % Sat > 50	8			3	0		7			4		
Pop. Mean	31			28	22		29			29		
Std. Deviation	14			14	7		15			14		
<b>% % Sat &gt; 50</b>	<b>9%</b>			<b>4%</b>	<b>0%</b>		<b>8%</b>			<b>5%</b>		



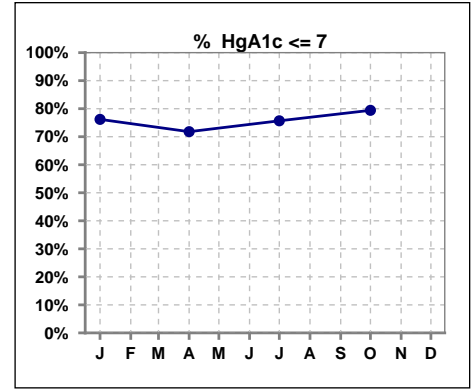
	Jan	Feb	Mar	Apr	May	Jun	Jul	Aug	Sep	Oct	Nov	Dec
# Patient	86	88	85	84	83	86	89	81	80	76	79	81
# Blood Transfusion	1	2	0	2	2	2	1	1	0	0	0	0



Methodology: a) All labs for 'Adequacy of Dialysis', 'Nutrition', 'Osteodystrophy', 'Anemia' and 'Diabetes' based on last value of month; b) BP's and #L processed are average of all values for month; c) Access data takes last access of month; d) Values for SGA and 'Infection Control' use most recent result.

**VI. Diabetes**

	Jan	Feb	Mar	Apr	May	Jun	Jul	Aug	Sep	Oct	Nov	Dec
# HgA1c	42			39			37			34		
# HgA1c <= 7	32			28			28			27		
Pop. Mean	6.4			6.6			6.3			6.3		
Std. Deviation	1.38			1.58			1.52			1.31		
<b>% HgA1c &lt;= 7</b>	<b>76%</b>			<b>72%</b>			<b>76%</b>			<b>79%</b>		

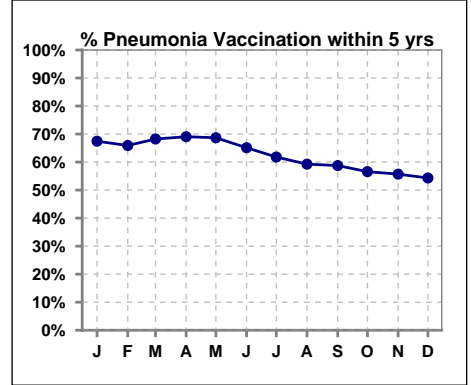


Methodology: a) All labs for 'Adequacy of Dialysis', 'Nutrition', 'Osteodystrophy', 'Anemia' and 'Diabetes' based on last value of month; b) BP's and #L processed are average of all values for month; c) Access data takes last access of month; d) Values for SGA and 'Infection Control' use most recent result.

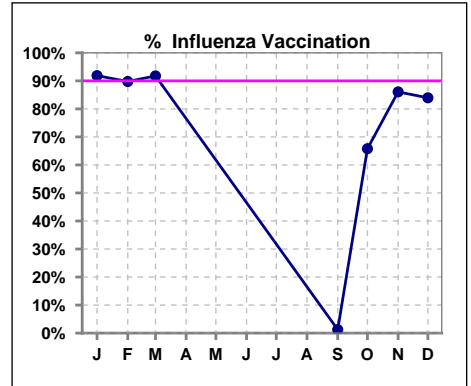
**VII. Infection Control**

**Pneumonia vaccination within the past five years**

	Jan	Feb	Mar	Apr	May	Jun	Jul	Aug	Sep	Oct	Nov	Dec
# Patient	86	88	85	84	83	86	89	81	80	76	79	81
# Pneumonia	58	58	58	58	57	56	55	48	47	43	44	44
% Pneumonia	67%	66%	68%	69%	69%	65%	62%	59%	59%	57%	56%	54%



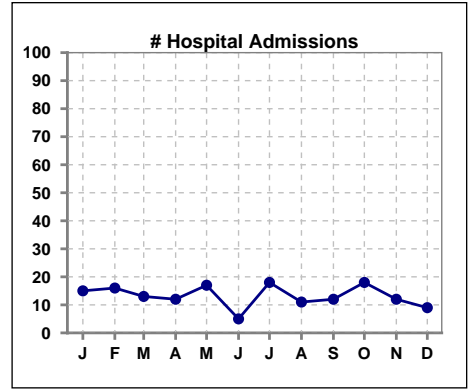
	Jan	Feb	Mar	Apr	May	Jun	Jul	Aug	Sep	Oct	Nov	Dec
# Patient	86	88	85						80	76	79	81
# Influenza	79	79	78						1	50	68	68
% Influenza	92%	90%	92%						1%	66%	86%	84%



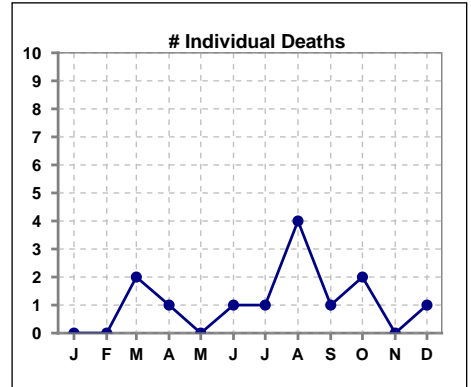
Methodology: a) All labs for 'Adequacy of Dialysis', 'Nutrition', 'Osteodystrophy', 'Anemia' and 'Diabetes' based on last value of month; b) BP's and #L processed are average of all values for month; c) Access data takes last access of month; d) Values for SGA and 'Infection Control' use most recent result.

**VIII. Outcome measures**

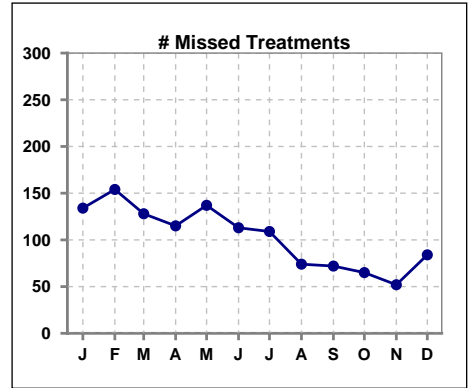
	Jan	Feb	Mar	Apr	May	Jun	Jul	Aug	Sep	Oct	Nov	Dec
# Patient	86	88	85	84	83	86	89	81	80	76	79	81
# Hospital Admissions	15	16	13	12	17	5	18	11	12	18	12	9



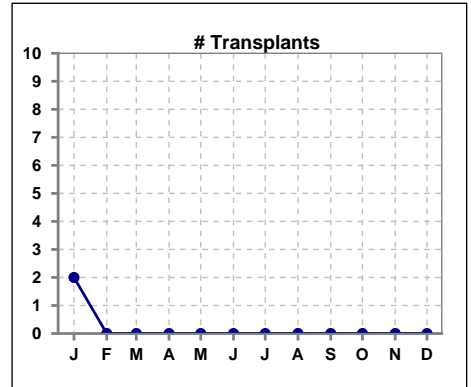
	Jan	Feb	Mar	Apr	May	Jun	Jul	Aug	Sep	Oct	Nov	Dec
# Patient	86	88	85	84	83	86	89	81	80	76	79	81
# Individual Deaths	0	0	2	1	0	1	1	4	1	2	0	1



	Jan	Feb	Mar	Apr	May	Jun	Jul	Aug	Sep	Oct	Nov	Dec
# Patient	86	88	85	84	83	86	89	81	80	76	79	81
# Missed Treatments	134	154	128	115	137	113	109	74	72	65	52	84



	Jan	Feb	Mar	Apr	May	Jun	Jul	Aug	Sep	Oct	Nov	Dec
# Patient	86	88	85	84	83	86	89	81	80	76	79	81
# Transplants	2	0	0	0	0	0	0	0	0	0	0	0



Methodology: a) All labs for 'Adequacy of Dialysis', 'Nutrition', 'Osteodystrophy', 'Anemia' and 'Diabetes' based on last value of month; b) BP's and #L processed are average of all values for month; c) Access data takes last access of month; d) Values for SGA and 'Infection Control' use most recent result.