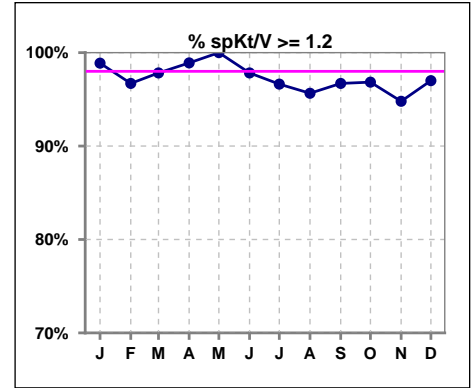
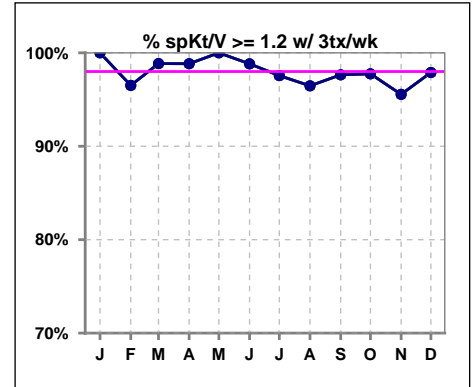


**I. ADEQUACY OF DIALYSIS**

	Jan	Feb	Mar	Apr	May	Jun	Jul	Aug	Sep	Oct	Nov	Dec
# spKt/V	89	91	92	91	91	92	89	92	91	95	96	100
# spKt/V >= 1.2	88	88	90	90	91	90	86	88	88	92	91	97
Pop. Mean	1.68	1.67	1.69	1.65	1.67	1.65	1.73	1.75	1.75	1.70	1.68	1.69
Std. Deviation	0.28	0.31	0.29	0.24	0.24	0.26	0.81	0.81	0.81	0.42	0.29	0.28
% spKt/V >= 1.2	99%	97%	98%	99%	100%	98%	97%	96%	97%	97%	95%	97%



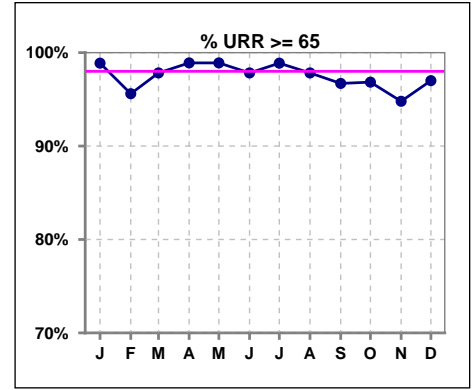
	Jan	Feb	Mar	Apr	May	Jun	Jul	Aug	Sep	Oct	Nov	Dec
# spKt/V w/ 3tx/wk	85	86	87	86	85	85	82	85	85	89	90	95
# spKt/V >= 1.2 w/3tx/wk	85	83	86	85	85	84	80	82	83	87	86	93
Pop. Mean	1.69	1.67	1.69	1.66	1.67	1.65	1.66	1.69	1.68	1.71	1.69	1.69
Std. Deviation	0.28	0.31	0.28	0.24	0.24	0.24	0.27	0.28	0.30	0.41	0.28	0.26
% >= 1.2 w/3tx/wk	100%	97%	99%	99%	100%	99%	98%	96%	98%	98%	96%	98%



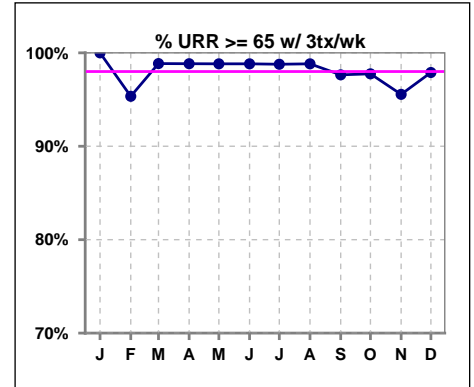
Methodology: a) All labs for 'Adequacy of Dialysis', 'Nutrition', 'Osteodystrophy', 'Anemia' and 'Diabetes' based on last value of month; b) BP's and #L processed are average of all values for month; c) Access data takes last access of month; d) Values for SGA and 'Infection Control' use most recent result.

**I. ADEQUACY OF DIALYSIS - CONT.**

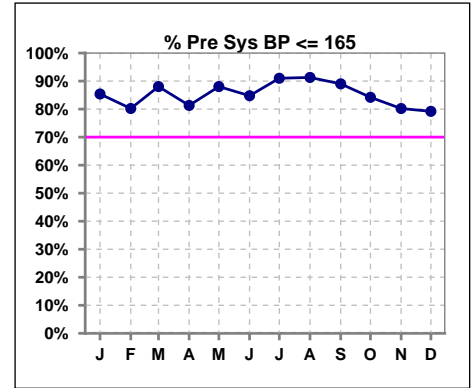
	Jan	Feb	Mar	Apr	May	Jun	Jul	Aug	Sep	Oct	Nov	Dec
# URR	89	91	92	91	91	92	89	92	91	95	96	100
# URR >= 65	88	87	90	90	90	90	88	90	88	92	91	97
Pop. Mean	76	76	76	76	76	76	75	76	76	76	76	76
Std. Deviation	5.32	6.75	5.93	5.08	4.78	5.22	6.09	6.03	5.96	7.02	6.13	5.33
% URR >= 65	99%	96%	98%	99%	99%	98%	99%	98%	97%	97%	95%	97%



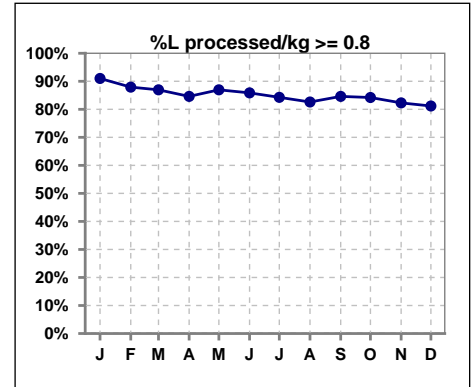
	Jan	Feb	Mar	Apr	May	Jun	Jul	Aug	Sep	Oct	Nov	Dec
# URR w/ 3tx/wk	85	86	87	86	85	85	82	85	85	89	90	95
# URR>=65 w/ 3tx/wk	85	82	86	85	84	84	81	84	83	87	86	93
Pop. Mean	77	76	76	76	76	76	75	76	76	76	76	76
Std. Deviation	5.16	6.82	5.75	5.05	4.77	4.98	6.04	5.67	5.71	6.68	5.97	5.08
% URR>=65 w/ 3tx/wk	100%	95%	99%	99%	99%	99%	99%	99%	98%	98%	96%	98%



	Jan	Feb	Mar	Apr	May	Jun	Jul	Aug	Sep	Oct	Nov	Dec
# Pre Sys BP	89	91	92	91	92	92	89	92	91	95	96	101
# Pre Sys BP <= 165	76	73	81	74	81	78	81	84	82	81	79	80
Pop. Mean	145	148	144	146	145	144	143	142	143	148	149	149
Std. Deviation	18.8	20.1	19.4	20.4	17.9	19.3	18.2	18.3	18.0	19.7	19.3	19.1
% Pre Sys BP <=165	85%	80%	88%	81%	88%	85%	91%	91%	89%	84%	80%	79%



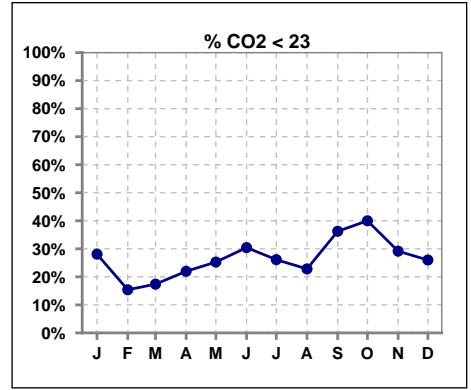
	Jan	Feb	Mar	Apr	May	Jun	Jul	Aug	Sep	Oct	Nov	Dec
# L processed/kg	89	91	92	91	92	92	89	92	91	95	96	101
# L processed/kg>=0.8	81	80	80	77	80	79	75	76	77	80	79	82
Pop. Mean	1	1	1	1	1	1	1	1	1	1	1	1
Std. Deviation	0.3	0.3	0.3	0.3	0.3	0.2	0.3	0.3	0.3	0.2	0.3	0.3
% L processed/kg>=0.8	91%	88%	87%	85%	87%	86%	84%	83%	85%	84%	82%	81%



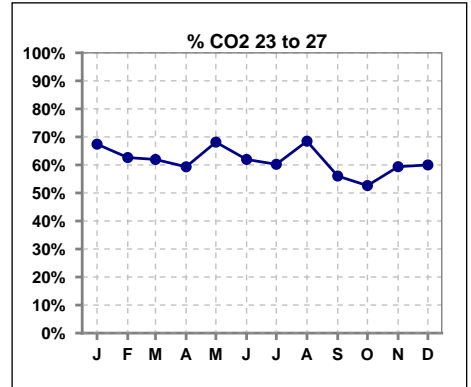
Methodology: a) All labs for 'Adequacy of Dialysis', 'Nutrition', 'Osteodystrophy', 'Anemia' and 'Diabetes' based on last value of month; b) BP's and #L processed are average of all values for month; c) Access data takes last access of month; d) Values for SGA and 'Infection Control' use most recent result.

**I. ADEQUACY OF DIALYSIS - CONT.**

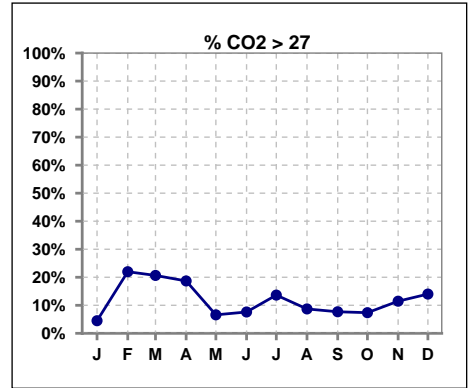
	Jan	Feb	Mar	Apr	May	Jun	Jul	Aug	Sep	Oct	Nov	Dec
# CO2	89	91	92	91	91	92	88	92	91	95	96	100
# CO2 < 23	25	14	16	20	23	28	23	21	33	38	28	26
Pop. Mean	24	25	25	25	24	24	24	24	23	23	24	24
Std. Deviation	2.72	2.73	3.19	3.16	2.65	2.48	2.94	2.68	3.24	2.75	3.15	3.16
<b>% CO2 &lt; 23</b>	<b>28%</b>	<b>15%</b>	<b>17%</b>	<b>22%</b>	<b>25%</b>	<b>30%</b>	<b>26%</b>	<b>23%</b>	<b>36%</b>	<b>40%</b>	<b>29%</b>	<b>26%</b>



	Jan	Feb	Mar	Apr	May	Jun	Jul	Aug	Sep	Oct	Nov	Dec
# CO2	89	91	92	91	91	92	88	92	91	95	96	100
# CO2 23 to 27	60	57	57	54	62	57	53	63	51	50	57	60
Pop. Mean	24	25	25	25	24	24	24	24	23	23	24	24
Std. Deviation	2.72	2.73	3.19	3.16	2.65	2.48	2.94	2.68	3.24	2.75	3.15	3.16
<b>% CO2 23 to 27</b>	<b>67%</b>	<b>63%</b>	<b>62%</b>	<b>59%</b>	<b>68%</b>	<b>62%</b>	<b>60%</b>	<b>68%</b>	<b>56%</b>	<b>53%</b>	<b>59%</b>	<b>60%</b>



	Jan	Feb	Mar	Apr	May	Jun	Jul	Aug	Sep	Oct	Nov	Dec
# CO2	89	91	92	91	91	92	88	92	91	95	96	100
# CO2 > 27	4	20	19	17	6	7	12	8	7	7	11	14
Pop. Mean	24	25	25	25	24	24	24	24	23	23	24	24
Std. Deviation	2.72	2.73	3.19	3.16	2.65	2.48	2.94	2.68	3.24	2.75	3.15	3.16
<b>% CO2 &gt; 27</b>	<b>4%</b>	<b>22%</b>	<b>21%</b>	<b>19%</b>	<b>7%</b>	<b>8%</b>	<b>14%</b>	<b>9%</b>	<b>8%</b>	<b>7%</b>	<b>11%</b>	<b>14%</b>

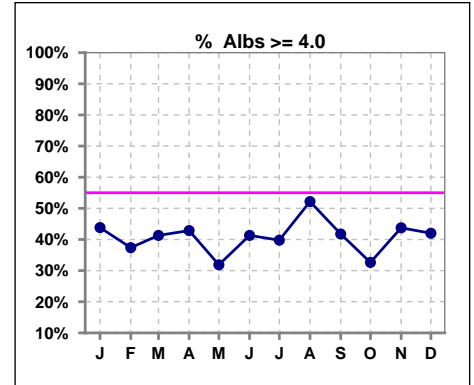


Methodology: a) All labs for 'Adequacy of Dialysis', 'Nutrition', 'Osteodystrophy', 'Anemia' and 'Diabetes' based on last value of month; b) BP's and #L processed are average of all values for month; c) Access data takes last access of month; d) Values for SGA and 'Infection Control' use most recent result.

\*Albumin values use BCG method - as of July 2001

**II. NUTRITION**

	Jan	Feb	Mar	Apr	May	Jun	Jul	Aug	Sep	Oct	Nov	Dec
# Albumin	89	91	92	91	91	92	88	92	91	95	96	100
# Albumin >= 4.0	39	34	38	39	29	38	35	48	38	31	42	42
Pop. Mean	3.8	3.8	3.8	3.8	3.8	3.8	3.8	3.9	3.8	3.8	3.9	3.9
Std. Deviation	0.37	0.41	0.40	0.39	0.35	0.36	0.34	0.38	0.34	0.36	0.31	0.31
% Alb >= 4.0	44%	37%	41%	43%	32%	41%	40%	52%	42%	33%	44%	42%

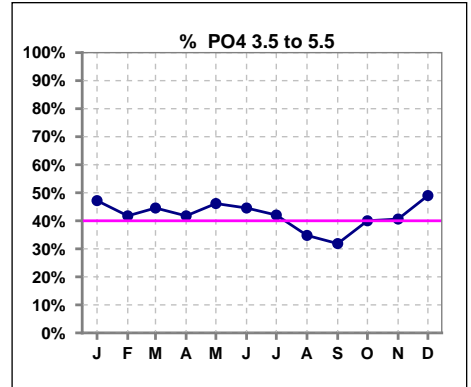


Methodology: a) All labs for 'Adequacy of Dialysis', 'Nutrition', 'Osteodystrophy', 'Anemia' and 'Diabetes' based on last value of month; b) BP's and #L processed are average of all values for month; c) Access data takes last access of month; d) Values for SGA and 'Infection Control' use most recent result.

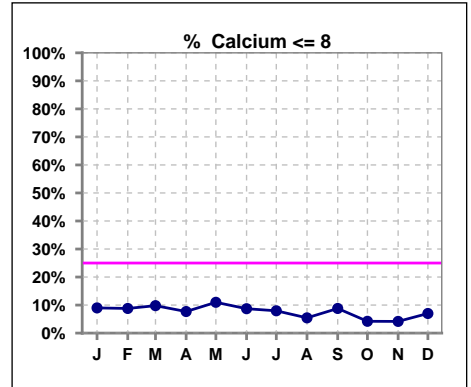
Lab methodology for PTH changed January 2012

**III. OSTEODYSTROPHY**

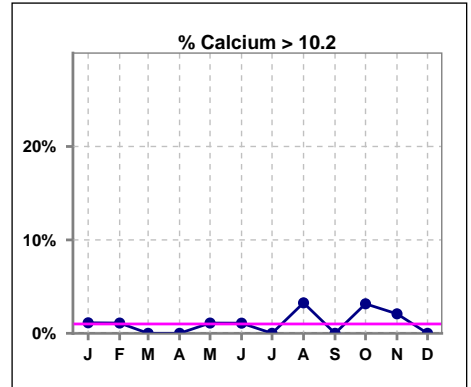
	Jan	Feb	Mar	Apr	May	Jun	Jul	Aug	Sep	Oct	Nov	Dec
# PO4	89	91	92	91	91	92	88	92	91	95	96	100
# PO4 3.5 to 5.5	42	38	41	38	42	41	37	32	29	38	39	49
Pop. Mean	5.8	5.9	5.8	5.9	5.9	6.0	6.1	5.9	6.2	5.7	5.9	5.8
Std. Deviation	1.76	1.87	2.08	1.80	1.79	1.83	1.74	1.87	1.85	1.83	1.75	1.63
% PO4 3.5 to 5.5	47%	42%	45%	42%	46%	45%	42%	35%	32%	40%	41%	49%



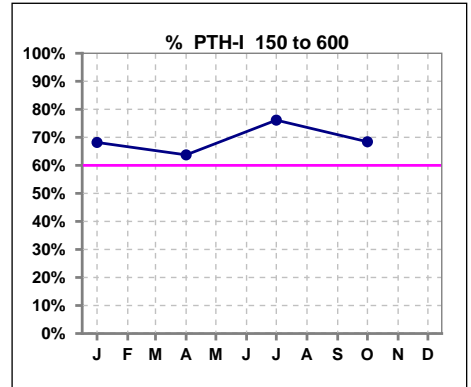
	Jan	Feb	Mar	Apr	May	Jun	Jul	Aug	Sep	Oct	Nov	Dec
# Calcium	89	91	92	91	91	92	88	92	91	95	96	100
# Calcium <= 8	8	8	9	7	10	8	7	5	8	4	4	7
Pop. Mean	9.1	9.1	9.2	9.1	9.0	9.1	9.0	9.3	9.0	9.1	9.2	9.1
Std. Deviation	0.65	0.63	0.71	0.64	0.69	0.69	0.61	0.62	0.65	0.61	0.63	0.61
% Calcium <= 8	9%	9%	10%	8%	11%	9%	8%	5%	9%	4%	4%	7%



	Jan	Feb	Mar	Apr	May	Jun	Jul	Aug	Sep	Oct	Nov	Dec
# Calcium	89	91	92	91	91	92	88	92	91	95	96	100
# Calcium > 10.2	1	1	0	0	1	1	0	3	0	3	2	0
Pop. Mean	9.1	9.1	9.2	9.1	9.0	9.1	9.0	9.3	9.0	9.1	9.2	9.1
Std. Deviation	0.65	0.63	0.71	0.64	0.69	0.69	0.61	0.62	0.65	0.61	0.63	0.61
% Calcium > 10.2	1%	1%	0%	0%	1%	1%	0%	3%	0%	3%	2%	0%



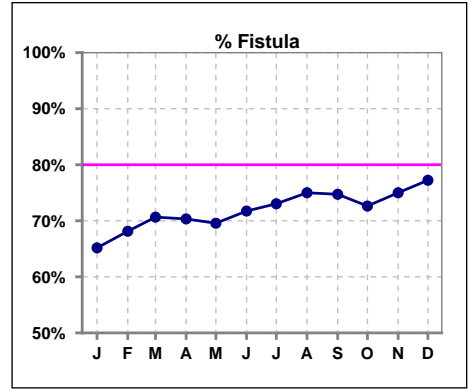
	Jan	Feb	Mar	Apr	May	Jun	Jul	Aug	Sep	Oct	Nov	Dec
# PTH-I	88			91			88			95		
# PTH-I 150 to 600	60			58			67			65		
Pop. Mean	442			407			383			388		
Std. Deviation	321			405			239			292		
% PTH-I 150 to 600	68%			64%			76%			68%		



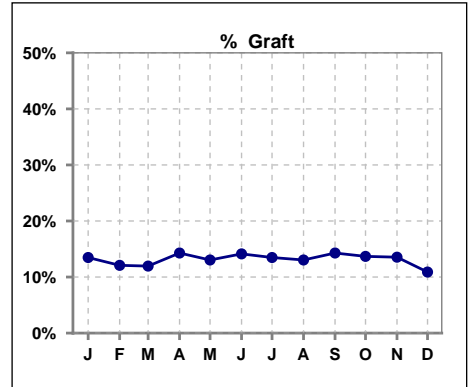
Methodology: a) All labs for 'Adequacy of Dialysis', 'Nutrition', 'Osteodystrophy', 'Anemia' and 'Diabetes' based on last value of month; b) BP's and #L processed are average of all values for month; c) Access data takes last access of month; d) Values for SGA and 'Infection Control' use most recent result.

**IV. ACCESS**

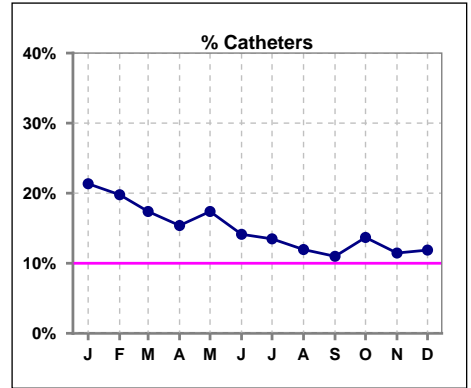
	Jan	Feb	Mar	Apr	May	Jun	Jul	Aug	Sep	Oct	Nov	Dec
# Access	89	91	92	91	92	92	89	92	91	95	96	101
# Fistula	58	62	65	64	64	66	65	69	68	69	72	78
% Fistula	65%	68%	71%	70%	70%	72%	73%	75%	75%	73%	75%	77%



	Jan	Feb	Mar	Apr	May	Jun	Jul	Aug	Sep	Oct	Nov	Dec
# Access	89	91	92	91	92	92	89	92	91	95	96	101
# Graft	12	11	11	13	12	13	12	12	13	13	13	11
% Graft	13%	12%	12%	14%	13%	14%	13%	13%	14%	14%	14%	11%



	Jan	Feb	Mar	Apr	May	Jun	Jul	Aug	Sep	Oct	Nov	Dec
# Access	89	91	92	91	92	92	89	92	91	95	96	101
# Catheters	19	18	16	14	16	13	12	11	10	13	11	12
% Catheters	21%	20%	17%	15%	17%	14%	13%	12%	11%	14%	11%	12%



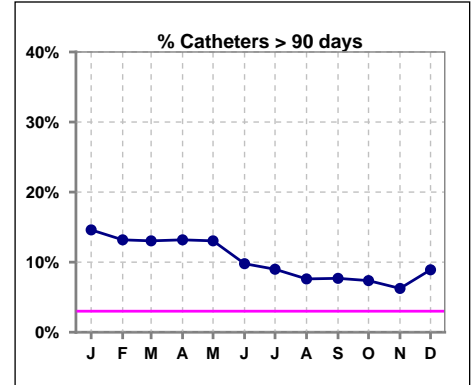
Methodology: a) All labs for 'Adequacy of Dialysis', 'Nutrition', 'Osteodystrophy', 'Anemia' and 'Diabetes' based on last value of month; b) BP's and #L processed are average of all values for month; c) Access data takes last access of month; d) Values for SGA and 'Infection Control' use most recent result.

**IV. ACCESS - CONT.**

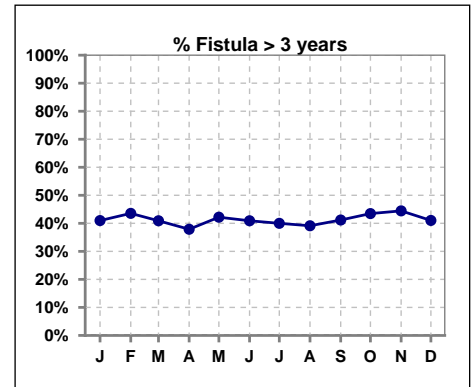
**Catheters > 90 days**

	Jan	Feb	Mar	Apr	May	Jun	Jul	Aug	Sep	Oct	Nov	Dec
<b># Access</b>	89	91	92	91	92	92	89	92	91	95	96	101
<b># Catheters</b>	13	12	12	12	12	9	8	7	7	7	6	9
<b>% Catheters</b>	15%	13%	13%	13%	13%	10%	9%	8%	8%	7%	6%	9%

**Definition:** Catheter in use on last treatment of the month



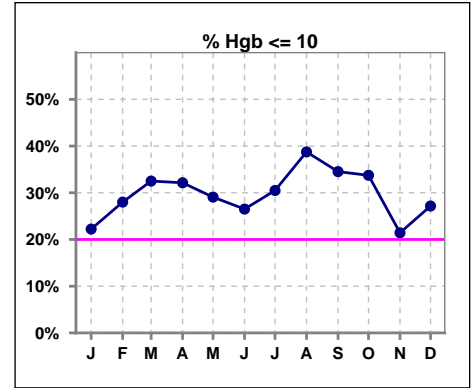
	Jan	Feb	Mar	Apr	May	Jun	Jul	Aug	Sep	Oct	Nov	Dec
<b># Fistula</b>	61	62	66	66	64	66	65	69	68	69	72	78
<b># Fistula &gt; 3 yrs</b>	25	27	27	25	27	27	26	27	28	30	32	32
<b>% Fistula &gt; 3 yrs</b>	41%	44%	41%	38%	42%	41%	40%	39%	41%	43%	44%	41%



**V. ANEMIA**

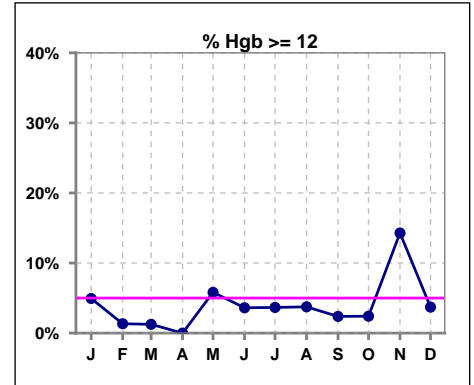
	Jan	Feb	Mar	Apr	May	Jun	Jul	Aug	Sep	Oct	Nov	Dec
# Hgb	81	75	80	84	86	83	82	80	84	83	84	81
# Hgb <= 10	18	21	26	27	25	22	25	31	29	28	18	22
Pop. Mean	10.6	10.4	10.4	10.2	10.4	10.6	10.4	10.3	10.3	10.3	10.8	10.5
Std. Deviation	1.1	1.2	1.1	1.1	1.2	1.1	1.1	1.1	1.0	1.1	1.3	1.0
<b>% Hgb &lt;= 10</b>	<b>22%</b>	<b>28%</b>	<b>33%</b>	<b>32%</b>	<b>29%</b>	<b>27%</b>	<b>30%</b>	<b>39%</b>	<b>35%</b>	<b>34%</b>	<b>21%</b>	<b>27%</b>

Note: Excludes patients who received no ESA in month.



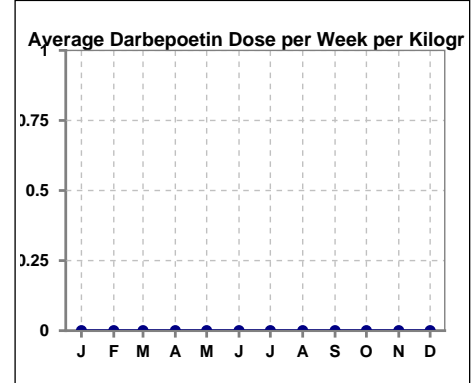
	Jan	Feb	Mar	Apr	May	Jun	Jul	Aug	Sep	Oct	Nov	Dec
# Hgb	81	75	80	84	86	83	82	80	84	83	84	81
# Hgb >= 12	4	1	1	0	5	3	3	3	2	2	12	3
Pop. Mean	10.6	10.4	10.4	10.2	10.4	10.6	10.4	10.3	10.3	10.3	10.8	10.5
Std. Deviation	1.1	1.2	1.1	1.1	1.2	1.1	1.1	1.1	1.0	1.1	1.3	1.0
<b>% Hgb &gt;= 12</b>	<b>5%</b>	<b>1%</b>	<b>1%</b>	<b>0%</b>	<b>6%</b>	<b>4%</b>	<b>4%</b>	<b>4%</b>	<b>2%</b>	<b>2%</b>	<b>14%</b>	<b>4%</b>

Note: Excludes patients who received no ESA in month.



**Average Darbepoetin Dose per Week per Kilogram**

	Jan	Feb	Mar	Apr	May	Jun	Jul	Aug	Sep	Oct	Nov	Dec
# Average Darbepoetin	0	0	0	0	0	0	0	0	0	0	0	0

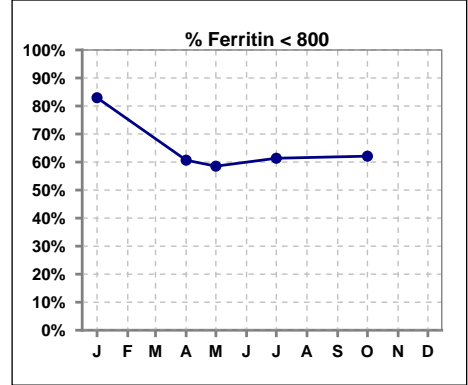




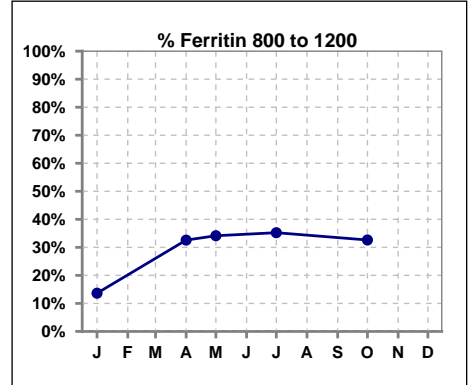
**V. ANEMIA - CONT.**

**Iron Profile**

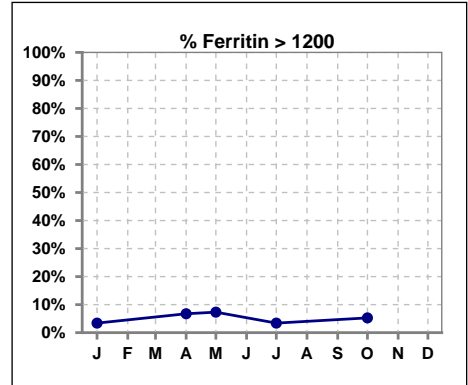
	Jan	Feb	Mar	Apr	May	Jun	Jul	Aug	Sep	Oct	Nov	Dec
# Ferritin	88			89	41		88			95		
# Ferritin < 800	73			54	24		54			59		
Pop. Mean	574			710	698		730			694		
Std. Deviation	307			345	365		276			304		
<b>% Ferritin &lt; 800</b>	<b>83%</b>			<b>61%</b>	<b>59%</b>		<b>61%</b>			<b>62%</b>		



	Jan	Feb	Mar	Apr	May	Jun	Jul	Aug	Sep	Oct	Nov	Dec
# Ferritin	88			89	41		88			95		
# Ferritin 800 to 1200	12			29	14		31			31		
Pop. Mean	574			710	698		730			694		
Std. Deviation	307			345	365		276			304		
<b>% Ferritin 800 to 1200</b>	<b>14%</b>			<b>33%</b>	<b>34%</b>		<b>35%</b>			<b>33%</b>		

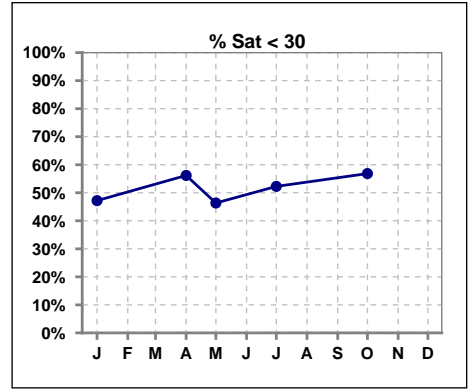


	Jan	Feb	Mar	Apr	May	Jun	Jul	Aug	Sep	Oct	Nov	Dec
# Ferritin	88			89	41		88			95		
# Ferritin > 1200	3			6	3		3			5		
Pop. Mean	574			710	698		730			694		
Std. Deviation	307			345	365		276			304		
<b>% Ferritin &gt; 1200</b>	<b>3%</b>			<b>7%</b>	<b>7%</b>		<b>3%</b>			<b>5%</b>		

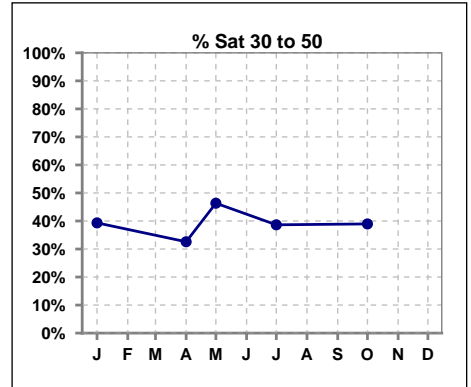


**V. ANEMIA - CONT.**

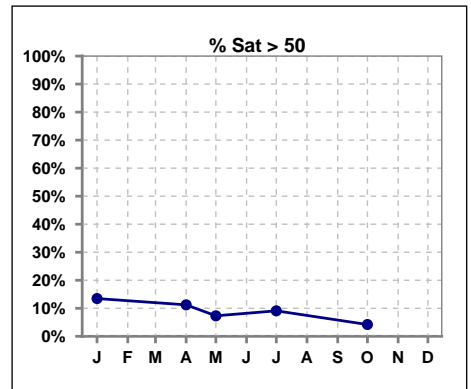
	Jan	Feb	Mar	Apr	May	Jun	Jul	Aug	Sep	Oct	Nov	Dec
# % Sat	89			89	41		88			95		
# % Sat < 30	42			50	19		46			54		
Pop. Mean	32			31	33		33			28		
Std. Deviation	15			18	16		18			13		
<b>% % Sat &lt; 30</b>	<b>47%</b>			<b>56%</b>	<b>46%</b>		<b>52%</b>			<b>57%</b>		



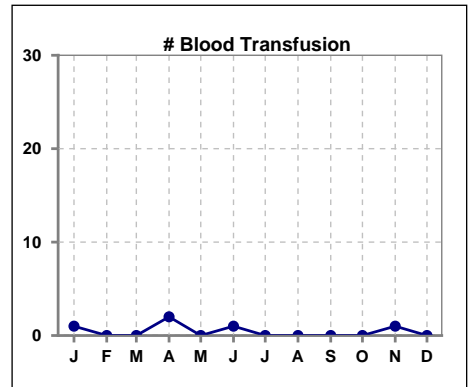
	Jan	Feb	Mar	Apr	May	Jun	Jul	Aug	Sep	Oct	Nov	Dec
# % Sat	89			89	41		88			95		
# % Sat 30 to 50	35			29	19		34			37		
Pop. Mean	32			31	33		33			28		
Std. Deviation	15			18	16		18			13		
<b>% % Sat 30 to 50</b>	<b>39%</b>			<b>33%</b>	<b>46%</b>		<b>39%</b>			<b>39%</b>		



	Jan	Feb	Mar	Apr	May	Jun	Jul	Aug	Sep	Oct	Nov	Dec
# % Sat	89			89	41		88			95		
# % Sat > 50	12			10	3		8			4		
Pop. Mean	32			31	33		33			28		
Std. Deviation	15			18	16		18			13		
<b>% % Sat &gt; 50</b>	<b>13%</b>			<b>11%</b>	<b>7%</b>		<b>9%</b>			<b>4%</b>		



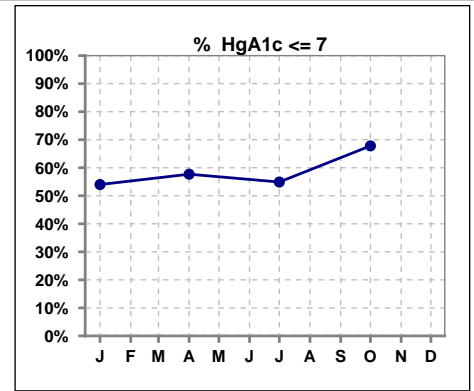
	Jan	Feb	Mar	Apr	May	Jun	Jul	Aug	Sep	Oct	Nov	Dec
# Patient	89	91	93	91	92	92	89	92	91	99	96	101
# Blood Transfusion	1	0	0	2	0	1	0	0	0	0	1	0



Methodology: a) All labs for 'Adequacy of Dialysis', 'Nutrition', 'Osteodystrophy', 'Anemia' and 'Diabetes' based on last value of month; b) BP's and #L processed are average of all values for month; c) Access data takes last access of month; d) Values for SGA and 'Infection Control' use most recent result.

**VI. Diabetes**

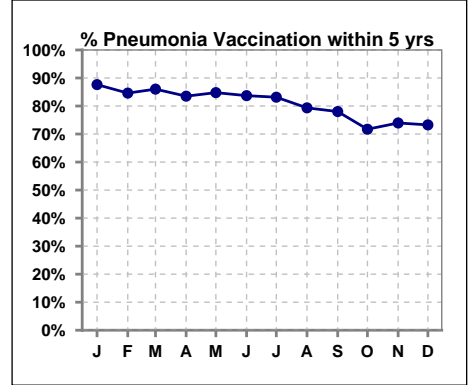
	Jan	Feb	Mar	Apr	May	Jun	Jul	Aug	Sep	Oct	Nov	Dec
# HgA1c	50			52			51			59		
# HgA1c <= 7	27			30			28			40		
Pop. Mean	6.9			7.0			7.2			6.6		
Std. Deviation	1.66			1.70			2.09			1.54		
<b>% HgA1c &lt;= 7</b>	<b>54%</b>			<b>58%</b>			<b>55%</b>			<b>68%</b>		



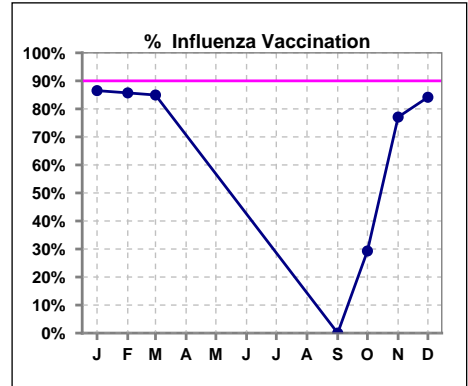
**VII. Infection Control**

**Pneumonia vaccination within the past five years**

	Jan	Feb	Mar	Apr	May	Jun	Jul	Aug	Sep	Oct	Nov	Dec
<b># Patient</b>	89	91	93	91	92	92	89	92	91	99	96	101
<b># Pneumonia</b>	78	77	80	76	78	77	74	73	71	71	71	74
<b>% Pneumonia</b>	88%	85%	86%	84%	85%	84%	83%	79%	78%	72%	74%	73%



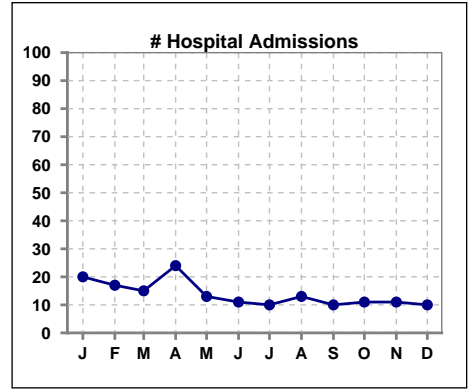
	Jan	Feb	Mar	Apr	May	Jun	Jul	Aug	Sep	Oct	Nov	Dec
<b># Patient</b>	89	91	93						91	99	96	101
<b># Influenza</b>	77	78	79						0	29	74	85
<b>% Influenza</b>	87%	86%	85%						0%	29%	77%	84%



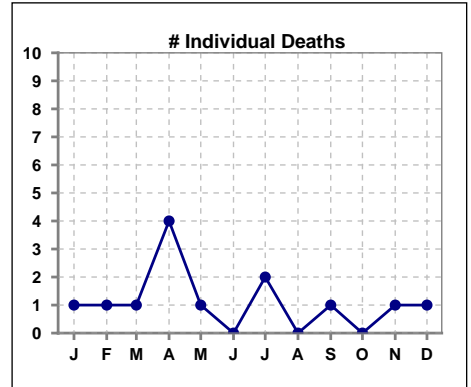
Methodology: a) All labs for 'Adequacy of Dialysis', 'Nutrition', 'Osteodystrophy', 'Anemia' and 'Diabetes' based on last value of month; b) BP's and #L processed are average of all values for month; c) Access data takes last access of month; d) Values for SGA and 'Infection Control' use most recent result.

**VIII. Outcome measures**

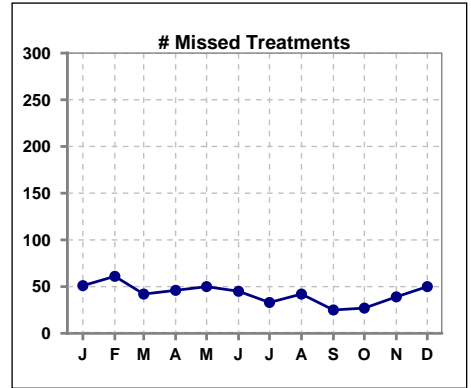
	Jan	Feb	Mar	Apr	May	Jun	Jul	Aug	Sep	Oct	Nov	Dec
<b># Patient</b>	89	91	93	91	92	92	89	92	91	99	96	101
<b># Hospital Admissions</b>	20	17	15	24	13	11	10	13	10	11	11	10



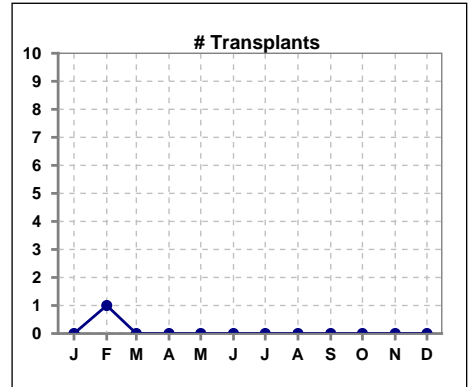
	Jan	Feb	Mar	Apr	May	Jun	Jul	Aug	Sep	Oct	Nov	Dec
<b># Patient</b>	89	91	93	91	92	92	89	92	91	99	96	101
<b># Individual Deaths</b>	1	1	1	4	1	0	2	0	1	0	1	1



	Jan	Feb	Mar	Apr	May	Jun	Jul	Aug	Sep	Oct	Nov	Dec
<b># Patient</b>	89	91	93	91	92	92	89	92	91	99	96	101
<b># Missed Treatments</b>	51	61	42	46	50	45	33	42	25	27	39	50



	Jan	Feb	Mar	Apr	May	Jun	Jul	Aug	Sep	Oct	Nov	Dec
<b># Patient</b>	89	91	93	91	92	92	89	92	91	99	96	101
<b># Transplants</b>	0	1	0	0	0	0	0	0	0	0	0	0



Methodology: a) All labs for 'Adequacy of Dialysis', 'Nutrition', 'Osteodystrophy', 'Anemia' and 'Diabetes' based on last value of month; b) BP's and #L processed are average of all values for month; c) Access data takes last access of month; d) Values for SGA and 'Infection Control' use most recent result.