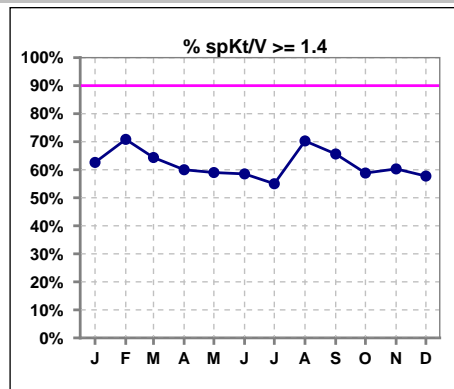
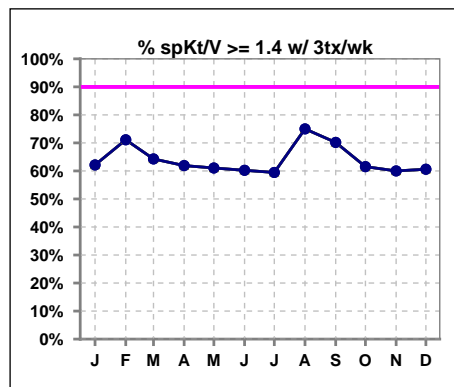


I. ADEQUACY OF DIALYSIS

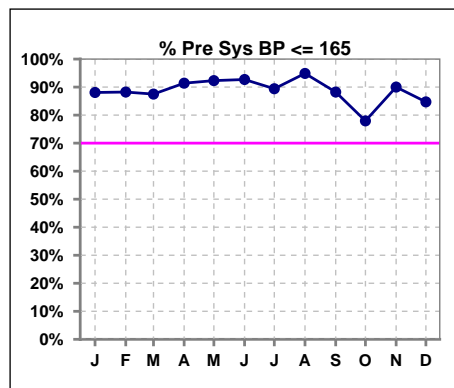
	Jan	Feb	Mar	Apr	May	Jun	Jul	Aug	Sep	Oct	Nov	Dec
# spKt/V	107	96	87	90	100	94	80	74	64	68	68	71
# spKt/V >= 1.4	67	68	56	54	59	55	44	52	42	40	41	41
Pop. Mean	1.52	1.55	1.49	1.46	1.47	1.48	1.48	1.53	1.53	1.45	1.53	1.47
Std. Deviation	0.39	0.31	0.37	0.33	0.30	0.38	0.38	0.35	0.37	0.28	0.40	0.29
% spKt/V >= 1.4	63%	71%	64%	60%	59%	59%	55%	70%	66%	59%	60%	58%
% spKt/V >= 1.2	90%	92%	84%	88%	90%	85%	80%	88%	83%	90%	90%	89%



	Jan	Feb	Mar	Apr	May	Jun	Jul	Aug	Sep	Oct	Nov	Dec
# spKt/V w/ 3tx/wk	103	90	84	84	95	88	74	68	57	65	65	66
# spKt/V >= 1.4 w/3tx/wk	64	64	54	52	58	53	44	51	40	40	39	40
Pop. Mean	1.52	1.56	1.49	1.47	1.48	1.50	1.52	1.56	1.55	1.46	1.54	1.48
Std. Deviation	0.39	0.31	0.36	0.33	0.30	0.39	0.36	0.33	0.36	0.28	0.41	0.30
% spKt/V >= 1.4 w/3tx/wk	62%	71%	64%	62%	61%	60%	59%	75%	70%	62%	60%	61%



	Jan	Feb	Mar	Apr	May	Jun	Jul	Aug	Sep	Oct	Nov	Dec
# Pre Sys BP	109	102	88	93	104	96	85	78	68	68	70	72
# Pre Sys BP <= 165	97	90	77	85	96	89	77	74	60	54	63	62
Pop. Mean	141	141	142	139	138	140	139	136	139	143	142	142
Std. Deviation	17.8	18.8	20.7	21.7	21.1	16.5	16.9	17.9	17.8	21.6	19.2	20.1
%Pre Sys BP <=165	88%	88%	88%	91%	92%	93%	89%	95%	88%	78%	90%	85%

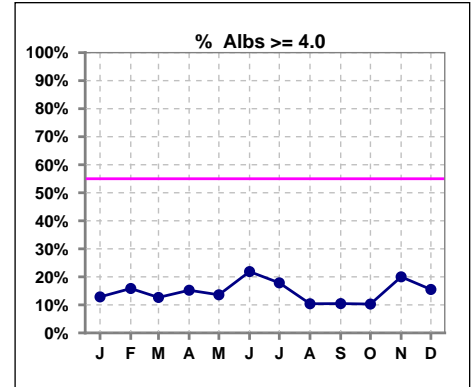


Methodology: a) All labs for 'Adequacy of Dialysis', 'Nutrition', 'Osteodystrophy', 'Anemia' and 'Diabetes' based on last value of month; b) BP's and #L processed are average of all values for month; c) Access data takes last access of month; d) Values for SGA and 'Infection Control' use most recent result.

*Albumin values use BCG method - as of July 2001

II. NUTRITION

	Jan	Feb	Mar	Apr	May	Jun	Jul	Aug	Sep	Oct	Nov	Dec
# Albumin	109	101	87	92	103	96	84	77	67	68	70	71
# Albumin >= 4.0	14	16	11	14	14	21	15	8	7	7	14	11
Pop. Mean	3.5	3.6	3.5	3.5	3.5	3.6	3.5	3.5	3.4	3.4	3.6	3.4
Std. Deviation	0.47	0.44	0.47	0.48	0.46	0.43	0.46	0.46	0.50	0.46	0.51	0.53
% Alb >= 4.0	13%	16%	13%	15%	14%	22%	18%	10%	10%	10%	20%	15%

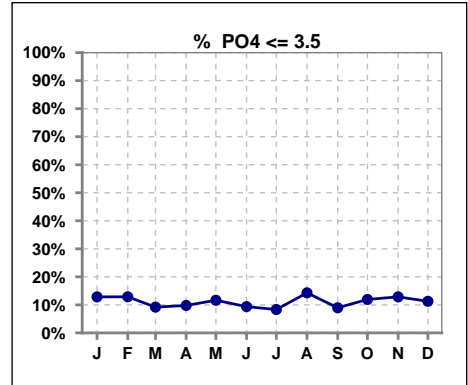


Methodology: a) All labs for 'Adequacy of Dialysis', 'Nutrition', 'Osteodystrophy', 'Anemia' and 'Diabetes' based on last value of month; b) BP's and #L processed are average of all values for month; c) Access data takes last access of month; d) Values for SGA and 'Infection Control' use most recent result.

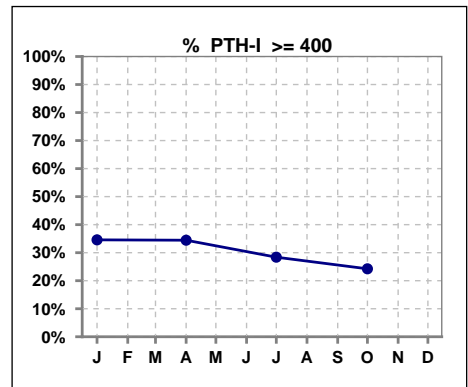
Lab methodology for PTH changed January 2012

III. OSTEODYSTROPHY

	Jan	Feb	Mar	Apr	May	Jun	Jul	Aug	Sep	Oct	Nov	Dec
# PO4	109	101	87	92	103	96	84	77	67	67	70	71
# PO4 <= 3.5	14	13	8	9	12	9	7	11	6	8	9	8
Pop. Mean	5.1	5.5	6.0	5.5	5.5	5.4	5.7	5.5	5.5	5.4	5.6	5.8
Std. Deviation	1.59	1.82	2.16	1.79	1.75	1.51	1.88	1.70	1.89	1.61	1.71	1.71
% PO4 <= 3.5	13%	13%	9%	10%	12%	9%	8%	14%	9%	12%	13%	11%



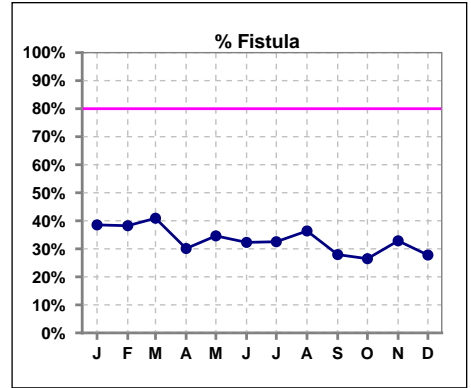
	Jan	Feb	Mar	Apr	May	Jun	Jul	Aug	Sep	Oct	Nov	Dec
# PTH-I	107			90			81			66		
# PTH-I >= 400	37			31			23			16		
Pop. Mean	367			417			365			320		
Std. Deviation	357			442			338			290		
% PTH-I >= 400	35%			34%			28%			24%		



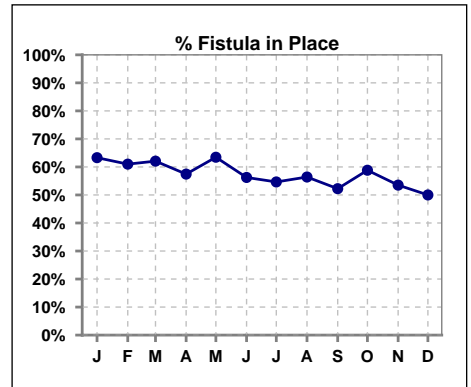
Methodology: a) All labs for 'Adequacy of Dialysis', 'Nutrition', 'Osteodystrophy', 'Anemia' and 'Diabetes' based on last value of month; b) BP's and #L processed are average of all values for month; c) Access data takes last access of month; d) Values for SGA and 'Infection Control' use most recent result.

IV. ACCESS

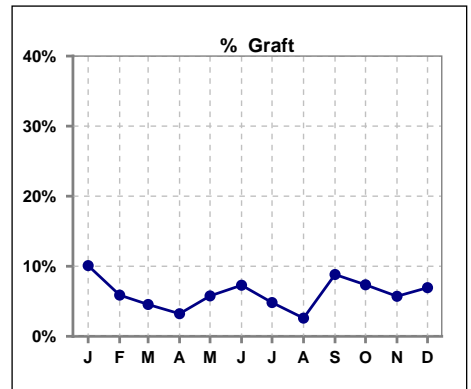
	Jan	Feb	Mar	Apr	May	Jun	Jul	Aug	Sep	Oct	Nov	Dec
# Access	109	102	88	93	104	96	83	77	68	68	70	72
# Fistula	42	39	36	28	36	31	27	28	19	18	23	20
% Fistula	39%	38%	41%	30%	35%	32%	33%	36%	28%	26%	33%	28%



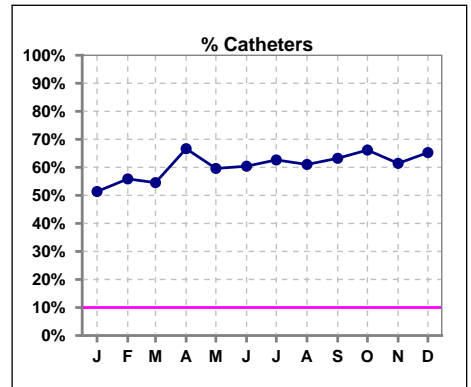
	Jan	Feb	Mar	Apr	May	Jun	Jul	Aug	Sep	Oct	Nov	Dec
# Patient	109	100	87	94	104	96	86	78	67	68	71	72
# Fistula in Place	69	61	54	54	66	54	47	44	35	40	38	36
% Fistula in Place	63%	61%	62%	57%	63%	56%	55%	56%	52%	59%	54%	50%



	Jan	Feb	Mar	Apr	May	Jun	Jul	Aug	Sep	Oct	Nov	Dec
# Access	109	102	88	93	104	96	83	77	68	68	70	72
# Graft	11	6	4	3	6	7	4	2	6	5	4	5
% Graft	10%	6%	5%	3%	6%	7%	5%	3%	9%	7%	6%	7%



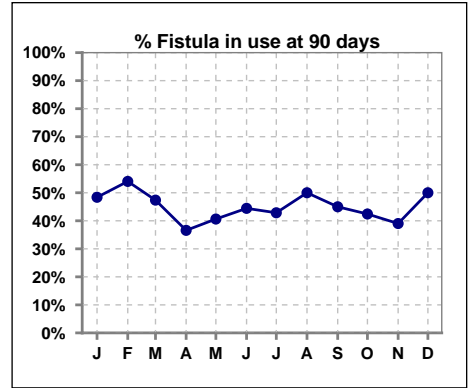
	Jan	Feb	Mar	Apr	May	Jun	Jul	Aug	Sep	Oct	Nov	Dec
# Access	109	102	88	93	104	96	83	77	68	68	70	72
# Catheters	56	57	48	62	62	58	52	47	43	45	43	47
% Catheters	51%	56%	55%	67%	60%	60%	63%	61%	63%	66%	61%	65%



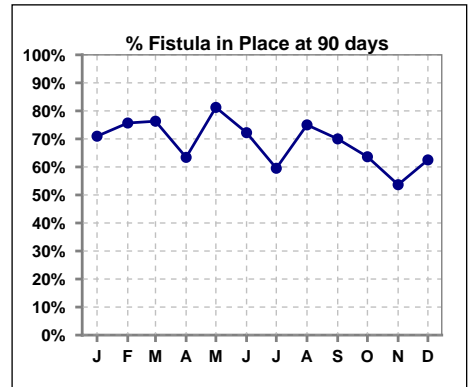
Methodology: a) All labs for 'Adequacy of Dialysis', 'Nutrition', 'Osteodystrophy', 'Anemia' and 'Diabetes' based on last value of month; b) BP's and #L processed are average of all values for month; c) Access data takes last access of month; d) Values for SGA and 'Infection Control' use most recent result.

IV. ACCESS - CONT. Access at 90 days for those patients that reached 90 days within the month.

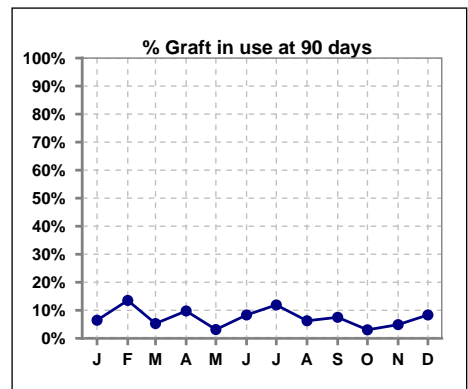
	Jan	Feb	Mar	Apr	May	Jun	Jul	Aug	Sep	Oct	Nov	Dec
# Patient	31	37	38	41	32	36	42	32	40	33	41	48
# Fistula in use	15	20	18	15	13	16	18	16	18	14	16	24
% Fistula in use	48%	54%	47%	37%	41%	44%	43%	50%	45%	42%	39%	50%



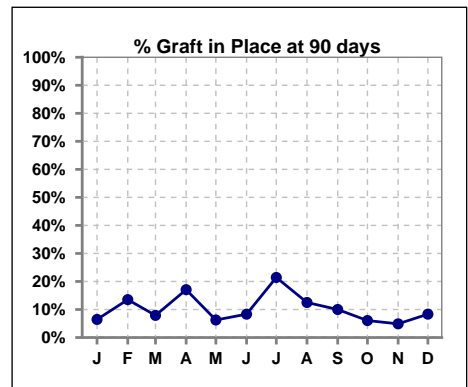
	Jan	Feb	Mar	Apr	May	Jun	Jul	Aug	Sep	Oct	Nov	Dec
# Patient	31	37	38	41	32	36	42	32	40	33	41	48
# Fistula in Place	22	28	29	26	26	26	25	24	28	21	22	30
% Fistula in Place	71%	76%	76%	63%	81%	72%	60%	75%	70%	64%	54%	63%



	Jan	Feb	Mar	Apr	May	Jun	Jul	Aug	Sep	Oct	Nov	Dec
# Patient	31	37	38	41	32	36	42	32	40	33	41	48
# Graft in use	2	5	2	4	1	3	5	2	3	1	2	4
% Graft in use	6%	14%	5%	10%	3%	8%	12%	6%	8%	3%	5%	8%



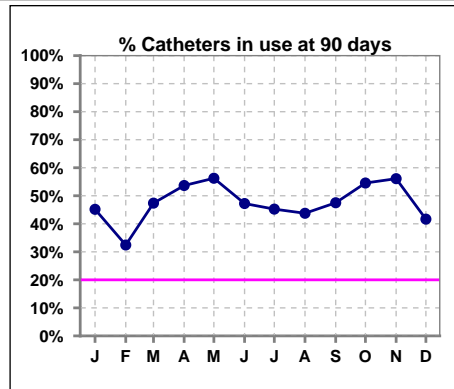
	Jan	Feb	Mar	Apr	May	Jun	Jul	Aug	Sep	Oct	Nov	Dec
# Patient	31	37	38	41	32	36	42	32	40	33	41	48
# Graft in Place	2	5	3	7	2	3	9	4	4	2	2	4
% Graft in Place	6%	14%	8%	17%	6%	8%	21%	13%	10%	6%	5%	8%



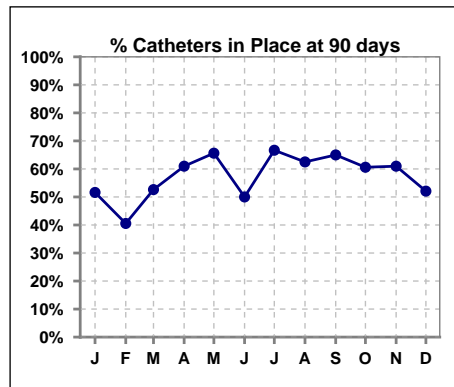
Methodology: a) All labs for 'Adequacy of Dialysis', 'Nutrition', 'Osteodystrophy', 'Anemia' and 'Diabetes' based on last value of month; b) BP's and #L processed are average of all values for month; c) Access data takes last access of month; d) Values for SGA and 'Infection Control' use most recent result.

IV. ACCESS - CONT. Access at 90 days for those patients that reached 90 days within the month.

	Jan	Feb	Mar	Apr	May	Jun	Jul	Aug	Sep	Oct	Nov	Dec
# Patient	31	37	38	41	32	36	42	32	40	33	41	48
# Catheters in use	14	12	18	22	18	17	19	14	19	18	23	20
% Catheters in use	45%	32%	47%	54%	56%	47%	45%	44%	48%	55%	56%	42%

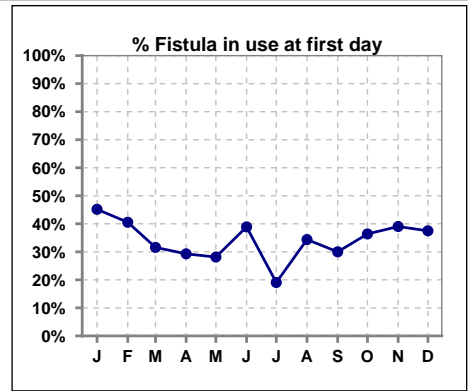


	Jan	Feb	Mar	Apr	May	Jun	Jul	Aug	Sep	Oct	Nov	Dec
# Patient	31	37	38	41	32	36	42	32	40	33	41	48
# Catheters in Place	16	15	20	25	21	18	28	20	26	20	25	25
% Catheters in Place	52%	41%	53%	61%	66%	50%	67%	63%	65%	61%	61%	52%

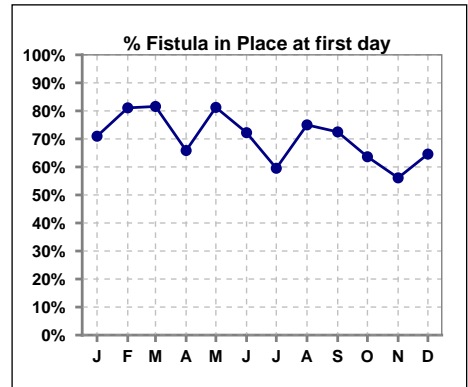


IV. ACCESS - CONT. Access at first day for those patients that reached 90 days within the month.

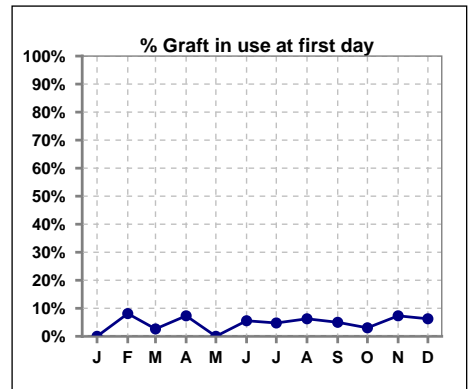
	Jan	Feb	Mar	Apr	May	Jun	Jul	Aug	Sep	Oct	Nov	Dec
# Patient	31	37	38	41	32	36	42	32	40	33	41	48
# Fistula in use	14	15	12	12	9	14	8	11	12	12	16	18
% Fistula in use	45%	41%	32%	29%	28%	39%	19%	34%	30%	36%	39%	38%



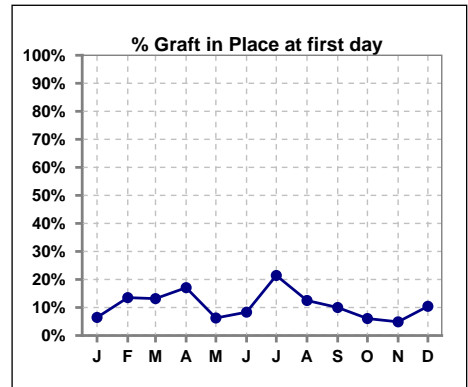
	Jan	Feb	Mar	Apr	May	Jun	Jul	Aug	Sep	Oct	Nov	Dec
# Patient	31	37	38	41	32	36	42	32	40	33	41	48
# Fistula in Place	22	30	31	27	26	26	25	24	29	21	23	31
% Fistula in Place	71%	81%	82%	66%	81%	72%	60%	75%	73%	64%	56%	65%



	Jan	Feb	Mar	Apr	May	Jun	Jul	Aug	Sep	Oct	Nov	Dec
# Patient	31	37	38	41	32	36	42	32	40	33	41	48
# Graft in use	0	3	1	3	0	2	2	2	2	1	3	3
% Graft in use	0%	8%	3%	7%	0%	6%	5%	6%	5%	3%	7%	6%



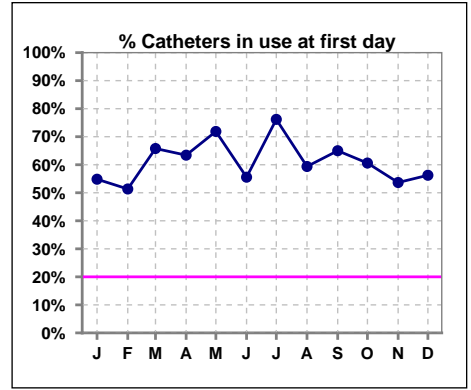
	Jan	Feb	Mar	Apr	May	Jun	Jul	Aug	Sep	Oct	Nov	Dec
# Patient	31	37	38	41	32	36	42	32	40	33	41	48
# Graft in Place	2	5	5	7	2	3	9	4	4	2	2	5
% Graft in Place	6%	14%	13%	17%	6%	8%	21%	13%	10%	6%	5%	10%



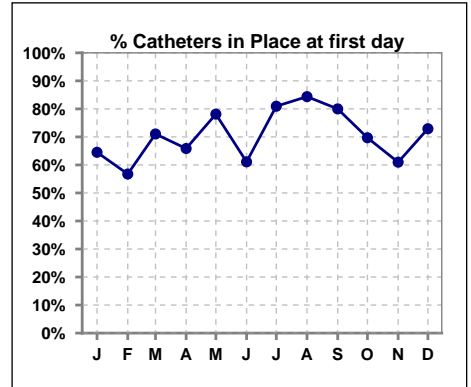
Methodology: a) All labs for 'Adequacy of Dialysis', 'Nutrition', 'Osteodystrophy', 'Anemia' and 'Diabetes' based on last value of month; b) BP's and #L processed are average of all values for month; c) Access data takes last access of month; d) Values for SGA and 'Infection Control' use most recent result.

IV. ACCESS - CONT. Access at first day for those patients that reached 90 days within the month.

	Jan	Feb	Mar	Apr	May	Jun	Jul	Aug	Sep	Oct	Nov	Dec
# Patient	31	37	38	41	32	36	42	32	40	33	41	48
# Catheters in use	17	19	25	26	23	20	32	19	26	20	22	27
% Catheters in use	55%	51%	66%	63%	72%	56%	76%	59%	65%	61%	54%	56%



	Jan	Feb	Mar	Apr	May	Jun	Jul	Aug	Sep	Oct	Nov	Dec
# Patient	31	37	38	41	32	36	42	32	40	33	41	48
# Catheters in Place	20	21	27	27	25	22	34	27	32	23	25	35
% Catheters in Place	65%	57%	71%	66%	78%	61%	81%	84%	80%	70%	61%	73%

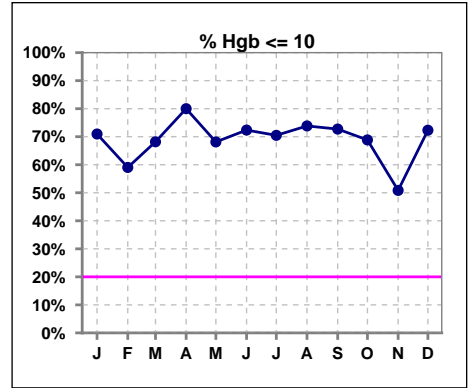


Methodology: a) All labs for 'Adequacy of Dialysis', 'Nutrition', 'Osteodystrophy', 'Anemia' and 'Diabetes' based on last value of month; b) BP's and #L processed are average of all values for month; c) Access data takes last access of month; d) Values for SGA and 'Infection Control' use most recent result.

V. ANEMIA

	Jan	Feb	Mar	Apr	May	Jun	Jul	Aug	Sep	Oct	Nov	Dec
# Hgb	93	83	66	80	91	76	61	65	55	61	59	65
# Hgb <= 10	66	49	45	64	62	55	43	48	40	42	30	47
Pop. Mean	9.4	9.7	9.3	9.0	9.4	9.2	9.3	9.4	9.3	9.4	9.7	9.3
Std. Deviation	1.5	1.5	1.3	1.3	1.6	1.5	1.7	1.5	1.2	1.4	1.6	1.5
% Hgb <= 10	71%	59%	68%	80%	68%	72%	70%	74%	73%	69%	51%	72%

Note: Excludes patients who received no ESA in month.



	Jan	Feb	Mar	Apr	May	Jun	Jul	Aug	Sep	Oct	Nov	Dec
# Hgb	93	83	66	80	91	76	61	65	55	61	59	65
# Hgb >= 12	4	3	1	2	6	4	4	3	0	1	3	3
Pop. Mean	9.4	9.7	9.3	9.0	9.4	9.2	9.3	9.4	9.3	9.4	9.7	9.3
Std. Deviation	1.5	1.5	1.3	1.3	1.6	1.5	1.7	1.5	1.2	1.4	1.6	1.5
% Hgb >= 12	4%	4%	2%	3%	7%	5%	7%	5%	0%	2%	5%	5%

Note: Excludes patients who received no ESA in month.

