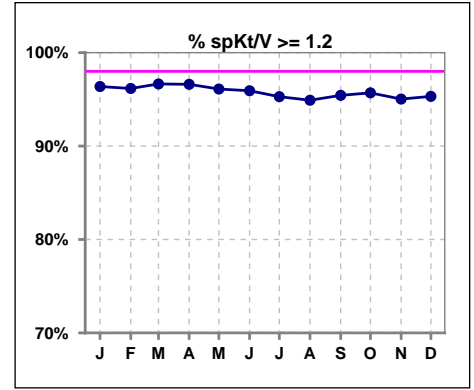
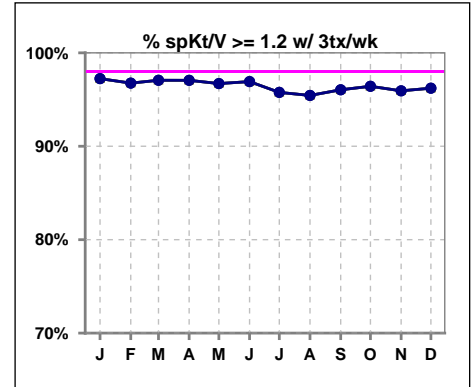


I. ADEQUACY OF DIALYSIS

	Jan	Feb	Mar	Apr	May	Jun	Jul	Aug	Sep	Oct	Nov	Dec
# spKt/V	1516	1512	1491	1534	1540	1545	1527	1531	1531	1533	1529	1559
# spKt/V >= 1.2	1461	1454	1441	1482	1480	1482	1455	1453	1461	1467	1453	1486
Pop. Mean	1.62	1.61	1.63	1.61	1.61	1.61	1.72	1.73	1.72	1.62	1.62	1.62
Std. Deviation	0.30	0.29	0.31	0.29	0.30	0.30	0.94	0.95	0.90	0.32	0.33	0.32
% spKt/V >= 1.2	96%	96%	97%	97%	96%	96%	95%	95%	95%	96%	95%	95%

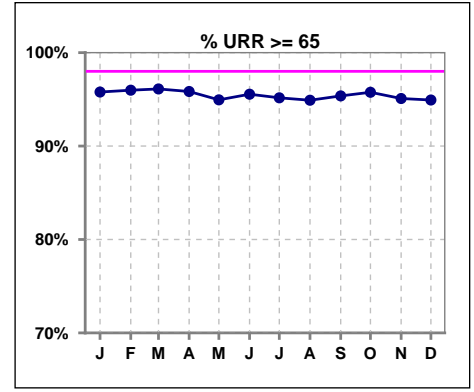


	Jan	Feb	Mar	Apr	May	Jun	Jul	Aug	Sep	Oct	Nov	Dec
# spKt/V w/ 3tx/wk	1448	1450	1430	1461	1459	1462	1441	1447	1441	1452	1451	1480
# spKt/V >= 1.2 w/3tx/wk	408	1403	1388	1418	1411	1417	1380	1381	1384	1400	1392	1424
Pop. Mean	1.62	1.62	1.63	1.61	1.62	1.62	1.62	1.64	1.63	1.63	1.63	1.62
Std. Deviation	0.29	0.29	0.30	0.29	0.29	0.29	0.36	0.49	0.41	0.32	0.32	0.32
% >= 1.2 w/3tx/wk	97%	97%	97%	97%	97%	97%	96%	95%	96%	96%	96%	96%

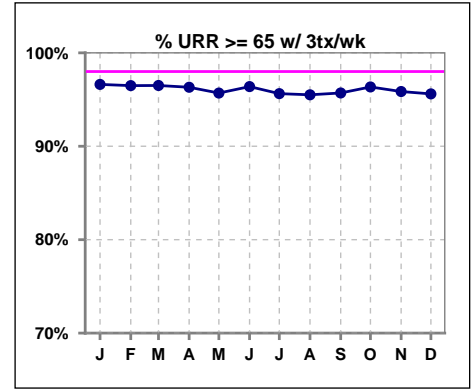


I. ADEQUACY OF DIALYSIS - CONT.

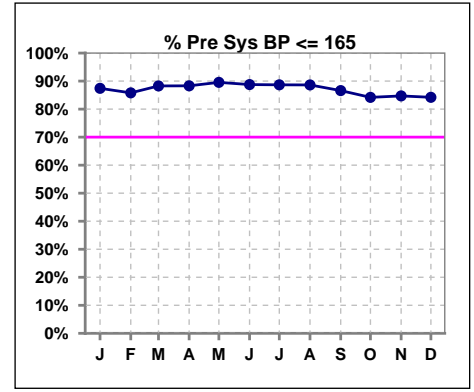
	Jan	Feb	Mar	Apr	May	Jun	Jul	Aug	Sep	Oct	Nov	Dec
# URR	1518	1517	1492	1539	1544	1551	1530	1531	1533	1532	1527	1558
# URR >= 65	1454	1456	1434	1475	1466	1482	1456	1453	1462	1467	1452	1479
Pop. Mean	75	75	75	75	75	75	74	74	75	75	75	75
Std. Deviation	6.23	6.20	6.15	6.18	6.49	6.37	6.66	6.93	6.51	6.51	6.66	6.54
% URR >= 65	96%	96%	96%	96%	95%	96%	95%	95%	95%	96%	95%	95%



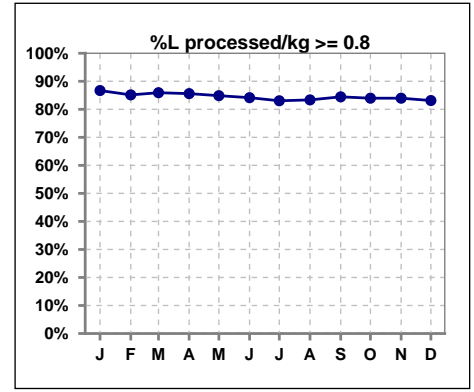
	Jan	Feb	Mar	Apr	May	Jun	Jul	Aug	Sep	Oct	Nov	Dec
# URR w/ 3tx/wk	1450	1454	1431	1466	1463	1467	1443	1447	1443	1451	1449	1479
# URR>=65 w/ 3tx/wk	1401	1403	1381	1412	1400	1414	1380	1382	1381	1398	1389	1414
Pop. Mean	75	75	75	75	75	75	74	75	75	75	75	75
Std. Deviation	6.03	6.08	6.06	6.03	6.35	6.19	6.42	6.77	6.42	6.34	6.43	6.45
% URR>=65 w/ 3tx/wk	97%	96%	97%	96%	96%	96%	96%	96%	96%	96%	96%	96%



	Jan	Feb	Mar	Apr	May	Jun	Jul	Aug	Sep	Oct	Nov	Dec
# Pre Sys BP	1526	1535	1535	1549	1560	1565	1544	1548	1546	1544	1550	1577
# Pre Sys BP <= 165	1335	1317	1356	1369	1398	1389	1383	1384	1350	1322	1335	1353
Pop. Mean	142	144	142	142	141	141	141	141	142	144	144	144
Std. Deviation	20.0	20.3	20.2	19.7	19.8	19.8	20.0	20.0	20.2	20.2	19.9	19.9
% Pre Sys BP <= 165	87%	86%	88%	88%	90%	89%	89%	89%	87%	84%	85%	84%



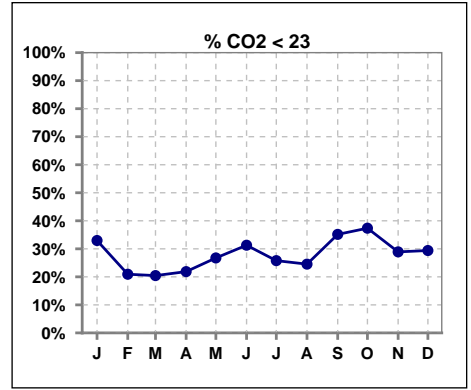
	Jan	Feb	Mar	Apr	May	Jun	Jul	Aug	Sep	Oct	Nov	Dec
# L processed/kg	1526	1535	1535	1549	1560	1565	1540	1545	1544	1541	1547	1577
# L processed/kg >= 0.8	1323	1307	1319	1326	1324	1317	1279	1288	1304	1294	1299	1311
Pop. Mean	1	1	1	1	1	1	1	1	1	1	1	1
Std. Deviation	0.3	0.3	0.3	0.3	0.3	0.3	0.3	0.3	0.3	0.3	0.4	0.3
% L processed/kg >= 0.8	87%	85%	86%	86%	85%	84%	83%	83%	84%	84%	84%	83%



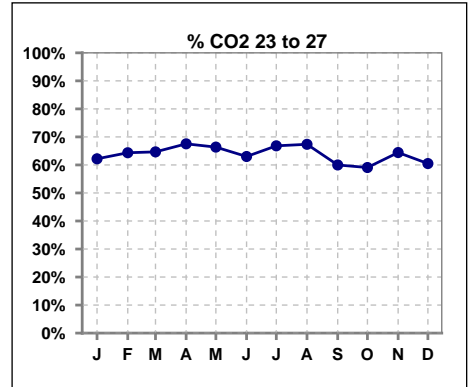
Methodology: a) All labs for 'Adequacy of Dialysis', 'Nutrition', 'Osteodystrophy', 'Anemia' and 'Diabetes' based on last value of month; b) BP's and #L processed are average of all values for month; c) Access data takes last access of month; d) Values for SGA and 'Infection Control' use most recent result.

I. ADEQUACY OF DIALYSIS - CONT.

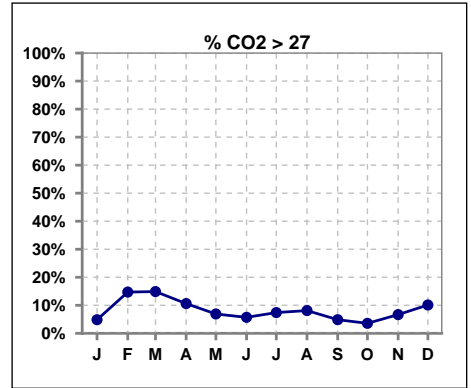
	Jan	Feb	Mar	Apr	May	Jun	Jul	Aug	Sep	Oct	Nov	Dec
# CO2	1526	1529	1531	1546	1552	1560	1540	1541	1542	1542	1543	1572
# CO2 < 23	503	320	313	338	415	488	397	378	542	576	446	462
Pop. Mean	23	25	25	24	24	24	24	24	23	23	24	24
Std. Deviation	2.63	3.07	2.90	2.70	2.74	2.69	2.73	2.70	2.81	2.66	2.70	3.00
% CO2 < 23	33%	21%	20%	22%	27%	31%	26%	25%	35%	37%	29%	29%



	Jan	Feb	Mar	Apr	May	Jun	Jul	Aug	Sep	Oct	Nov	Dec
# CO2	1526	1529	1531	1546	1552	1560	1540	1541	1542	1542	1543	1572
# CO2 23 to 27	949	984	990	1044	1030	983	1029	1038	925	911	994	951
Pop. Mean	23	25	25	24	24	24	24	24	23	23	24	24
Std. Deviation	2.63	3.07	2.90	2.70	2.74	2.69	2.73	2.70	2.81	2.66	2.70	3.00
% CO2 23 to 27	62%	64%	65%	68%	66%	63%	67%	67%	60%	59%	64%	60%



	Jan	Feb	Mar	Apr	May	Jun	Jul	Aug	Sep	Oct	Nov	Dec
# CO2	1526	1529	1531	1546	1552	1560	1540	1541	1542	1542	1543	1572
# CO2 > 27	74	225	228	164	107	89	114	125	75	55	103	159
Pop. Mean	23	25	25	24	24	24	24	24	23	23	24	24
Std. Deviation	2.63	3.07	2.90	2.70	2.74	2.69	2.73	2.70	2.81	2.66	2.70	3.00
% CO2 > 27	5%	15%	15%	11%	7%	6%	7%	8%	5%	4%	7%	10%

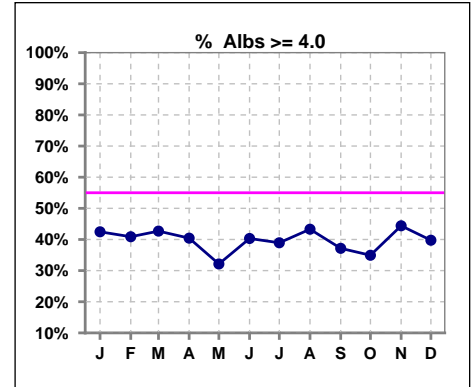


Methodology: a) All labs for 'Adequacy of Dialysis', 'Nutrition', 'Osteodystrophy', 'Anemia' and 'Diabetes' based on last value of month; b) BP's and #L processed are average of all values for month; c) Access data takes last access of month; d) Values for SGA and 'Infection Control' use most recent result.

*Albumin values use BCG method - as of July 2001

II. NUTRITION

	Jan	Feb	Mar	Apr	May	Jun	Jul	Aug	Sep	Oct	Nov	Dec
# Albumin	1526	1529	1532	1546	1553	1560	1541	1543	1542	1543	1543	1572
# Albumin >= 4.0	648	625	654	625	499	629	600	668	573	539	685	625
Pop. Mean	3.8	3.8	3.8	3.8	3.8	3.8	3.8	3.8	3.8	3.8	3.9	3.8
Std. Deviation	0.40	0.41	0.41	0.41	0.39	0.39	0.39	0.40	0.39	0.39	0.41	0.42
% Alb >= 4.0	42%	41%	43%	40%	32%	40%	39%	43%	37%	35%	44%	40%

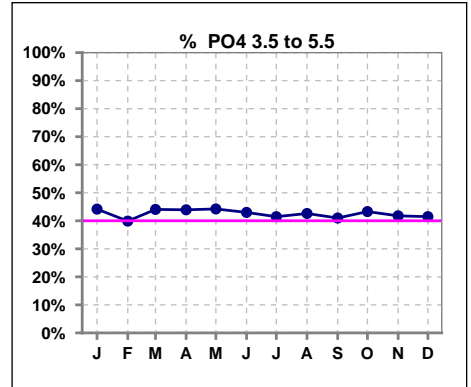


Methodology: a) All labs for 'Adequacy of Dialysis', 'Nutrition', 'Osteodystrophy', 'Anemia' and 'Diabetes' based on last value of month; b) BP's and #L processed are average of all values for month; c) Access data takes last access of month; d) Values for SGA and 'Infection Control' use most recent result.

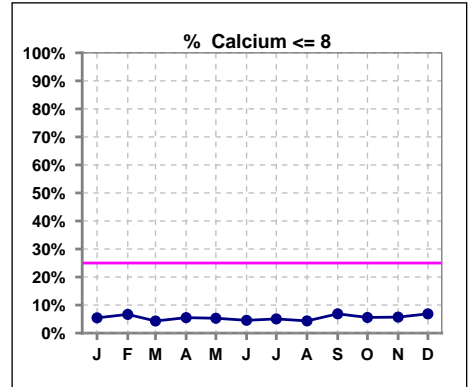
Lab methodology for PTH changed January 2012

III. OSTEODYSTROPHY

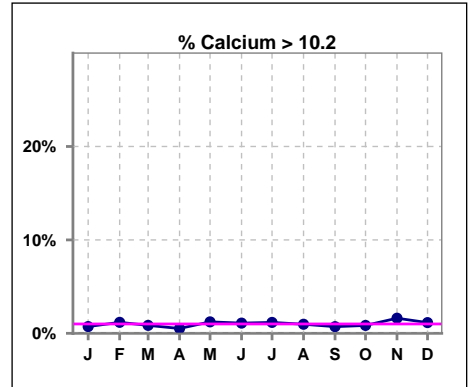
	Jan	Feb	Mar	Apr	May	Jun	Jul	Aug	Sep	Oct	Nov	Dec
# PO4	1526	1529	1532	1546	1551	1561	1541	1542	1542	1541	1544	1572
# PO4 3.5 to 5.5	674	610	675	679	686	671	639	657	632	667	645	652
Pop. Mean	5.8	6.0	5.9	5.8	5.9	5.9	5.9	5.8	6.0	5.8	5.9	5.9
Std. Deviation	1.88	1.97	1.94	1.82	1.83	1.84	1.82	1.77	1.90	1.86	1.87	1.85
% PO4 3.5 to 5.5	44%	40%	44%	44%	44%	43%	41%	43%	41%	43%	42%	41%



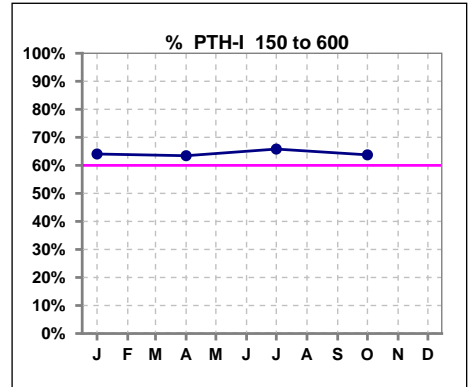
	Jan	Feb	Mar	Apr	May	Jun	Jul	Aug	Sep	Oct	Nov	Dec
# Calcium	1526	1529	1529	1543	1550	1555	1542	1543	1542	1543	1544	1572
# Calcium <= 8	83	102	66	85	82	71	78	67	106	86	88	108
Pop. Mean	9.1	9.1	9.2	9.2	9.2	9.2	9.2	9.2	9.1	9.1	9.2	9.1
Std. Deviation	0.64	0.67	0.62	0.63	0.65	0.63	0.64	0.62	0.69	0.66	0.67	0.68
% Calcium <= 8	5%	7%	4%	6%	5%	5%	5%	4%	7%	6%	6%	7%



	Jan	Feb	Mar	Apr	May	Jun	Jul	Aug	Sep	Oct	Nov	Dec
# Calcium	1526	1529	1529	1543	1550	1555	1542	1543	1542	1543	1544	1572
# Calcium > 10.2	11	18	13	8	19	17	18	15	11	13	25	18
Pop. Mean	9.1	9.1	9.2	9.2	9.2	9.2	9.2	9.2	9.1	9.1	9.2	9.1
Std. Deviation	0.64	0.67	0.62	0.63	0.65	0.63	0.64	0.62	0.69	0.66	0.67	0.68
% Calcium > 10.2	1%	1%	1%	1%	1%	1%	1%	1%	1%	1%	2%	1%



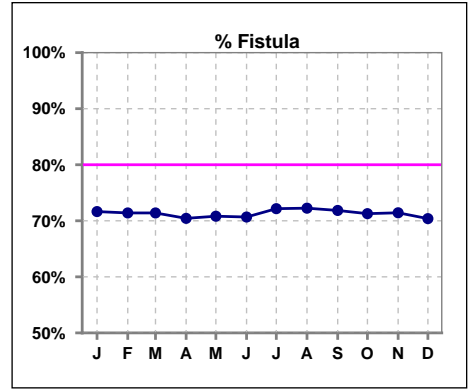
	Jan	Feb	Mar	Apr	May	Jun	Jul	Aug	Sep	Oct	Nov	Dec
# PTH-I	1522			1540			1530			1534		
# PTH-I 150 to 600	975			977			1007			978		
Pop. Mean	496			460			450			451		
Std. Deviation	464			461			416			432		
% PTH-I 150 to 600	64%			63%			66%			64%		



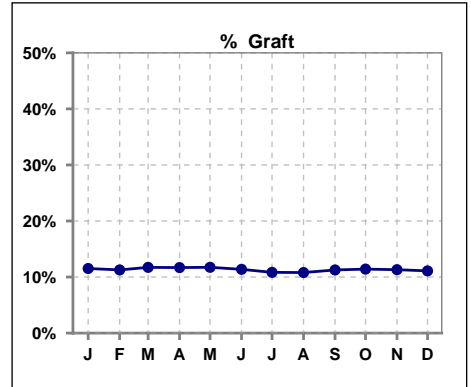
Methodology: a) All labs for 'Adequacy of Dialysis', 'Nutrition', 'Osteodystrophy', 'Anemia' and 'Diabetes' based on last value of month; b) BP's and #L processed are average of all values for month; c) Access data takes last access of month; d) Values for SGA and 'Infection Control' use most recent result.

IV. ACCESS

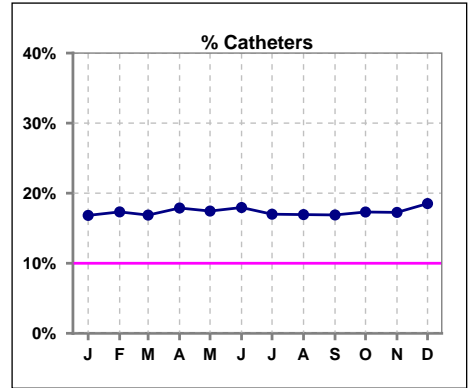
	Jan	Feb	Mar	Apr	May	Jun	Jul	Aug	Sep	Oct	Nov	Dec
# Access	1527	1535	1535	1549	1559	1565	1541	1546	1545	1542	1547	1577
# Fistula	1094	1096	1096	1091	1104	1106	1112	1117	1110	1099	1105	1110
% Fistula	72%	71%	71%	70%	71%	71%	72%	72%	72%	71%	71%	70%



	Jan	Feb	Mar	Apr	May	Jun	Jul	Aug	Sep	Oct	Nov	Dec
# Access	1527	1535	1535	1549	1559	1565	1541	1546	1545	1542	1547	1577
# Graft	176	173	180	181	183	178	167	167	174	176	175	175
% Graft	12%	11%	12%	12%	12%	11%	11%	11%	11%	11%	11%	11%



	Jan	Feb	Mar	Apr	May	Jun	Jul	Aug	Sep	Oct	Nov	Dec
# Access	1527	1535	1535	1549	1559	1565	1541	1546	1545	1542	1547	1577
# Catheters	257	266	259	277	272	281	262	262	261	267	267	292
% Catheters	17%	17%	17%	18%	17%	18%	17%	17%	17%	17%	17%	19%



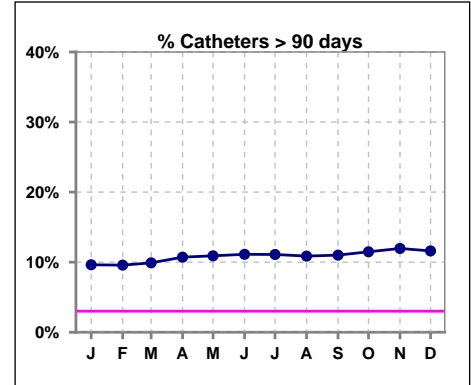
Methodology: a) All labs for 'Adequacy of Dialysis', 'Nutrition', 'Osteodystrophy', 'Anemia' and 'Diabetes' based on last value of month; b) BP's and #L processed are average of all values for month; c) Access data takes last access of month; d) Values for SGA and 'Infection Control' use most recent result.

IV. ACCESS - CONT.

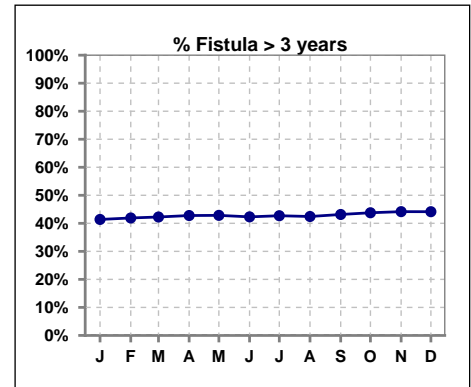
Catheters > 90 days

	Jan	Feb	Mar	Apr	May	Jun	Jul	Aug	Sep	Oct	Nov	Dec
# Access	1527	1535	1535	1549	1559	1565	1541	1546	1545	1542	1547	1577
# Catheters	147	147	152	166	170	174	171	168	170	177	185	183
% Catheters	10%	10%	10%	11%	11%	11%	11%	11%	11%	11%	12%	12%

Definition: Catheter in use on last treatment of the month



	Jan	Feb	Mar	Apr	May	Jun	Jul	Aug	Sep	Oct	Nov	Dec
# Fistula	1114	1112	1110	1101	1118	1130	1112	1117	1110	1099	1105	1110
# Fistula > 3 yrs	461	466	469	471	479	478	475	474	479	481	488	490
% Fistula > 3 yrs	41%	42%	42%	43%	43%	42%	43%	42%	43%	44%	44%	44%

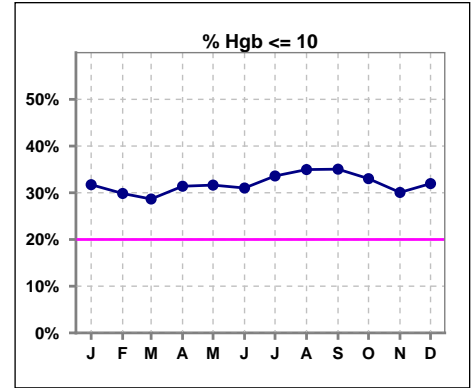


Methodology: a) All labs for 'Adequacy of Dialysis', 'Nutrition', 'Osteodystrophy', 'Anemia' and 'Diabetes' based on last value of month; b) BP's and #L processed are average of all values for month; c) Access data takes last access of month; d) Values for SGA and 'Infection Control' use most recent result.

V. ANEMIA

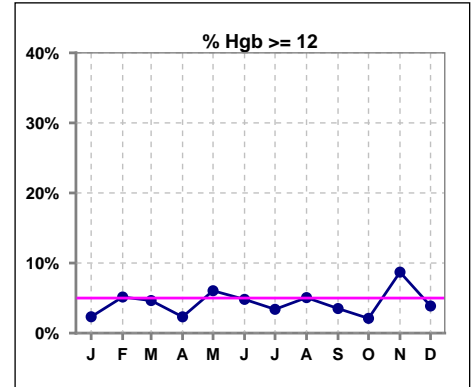
	Jan	Feb	Mar	Apr	May	Jun	Jul	Aug	Sep	Oct	Nov	Dec
# Hgb	1289	1243	1249	1293	1340	1309	1268	1264	1284	1284	1287	1267
# Hgb <= 10	409	371	358	406	424	406	426	442	450	424	387	405
Pop. Mean	10.4	10.5	10.5	10.4	10.5	10.4	10.3	10.4	10.3	10.3	10.5	10.4
Std. Deviation	1.2	1.2	1.2	1.1	1.2	1.2	1.2	1.2	1.2	1.1	1.3	1.2
% Hgb <= 10	32%	30%	29%	31%	32%	31%	34%	35%	35%	33%	30%	32%

Note: Excludes patients who received no ESA in month.



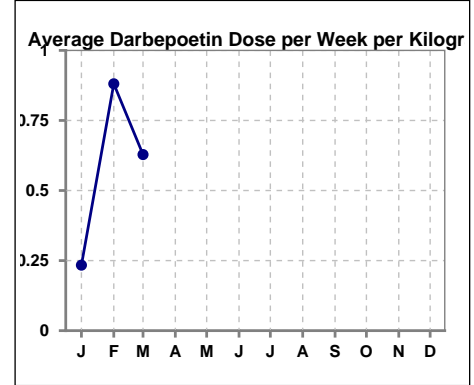
	Jan	Feb	Mar	Apr	May	Jun	Jul	Aug	Sep	Oct	Nov	Dec
# Hgb	1289	1243	1249	1293	1340	1309	1268	1264	1284	1284	1287	1267
# Hgb >= 12	30	64	58	30	81	63	43	64	45	27	112	49
Pop. Mean	10.4	10.5	10.5	10.4	10.5	10.4	10.3	10.4	10.3	10.3	10.5	10.4
Std. Deviation	1.2	1.2	1.2	1.1	1.2	1.2	1.2	1.2	1.2	1.1	1.3	1.2
% Hgb >= 12	2%	5%	5%	2%	6%	5%	3%	5%	4%	2%	9%	4%

Note: Excludes patients who received no ESA in month.



Average Darbepoetin Dose per Week per Kilogram

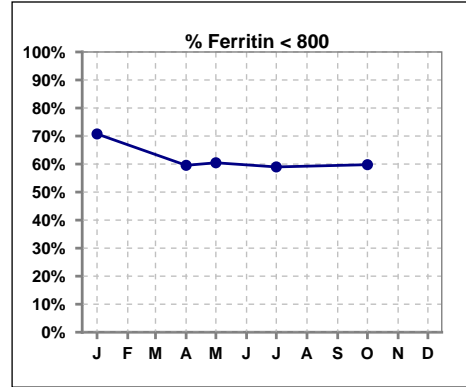
	Jan	Feb	Mar	Apr	May	Jun	Jul	Aug	Sep	Oct	Nov	Dec
# Average Darbepoetin	0.2	0.9	0.6									



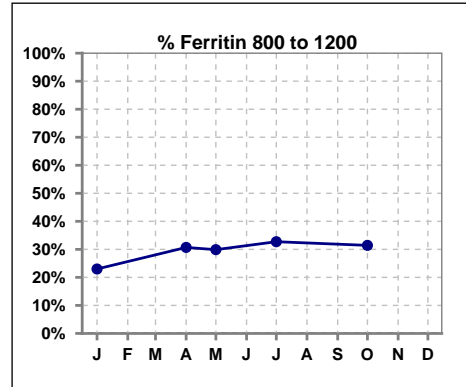
V. ANEMIA - CONT.

Iron Profile

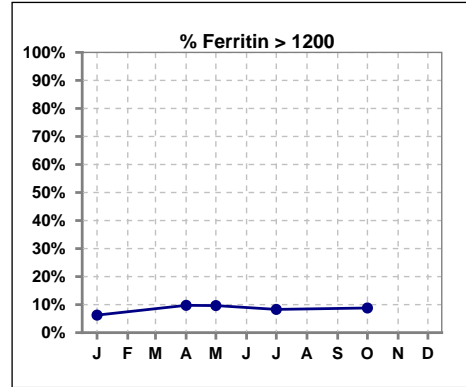
	Jan	Feb	Mar	Apr	May	Jun	Jul	Aug	Sep	Oct	Nov	Dec
# Ferritin	1518			1538	435		1531			1534		
# Ferritin < 800	1074			916	263		903			917		
Pop. Mean	691			751	745		737			733		
Std. Deviation	546			403	459		401			416		
% Ferritin < 800	71%			60%	60%		59%			60%		



	Jan	Feb	Mar	Apr	May	Jun	Jul	Aug	Sep	Oct	Nov	Dec
# Ferritin	1518			1538	435		1531			1534		
# Ferritin 800 to 1200	349			472	130		501			482		
Pop. Mean	691			751	745		737			733		
Std. Deviation	546			403	459		401			416		
% Ferritin 800 to 1200	23%			31%	30%		33%			31%		

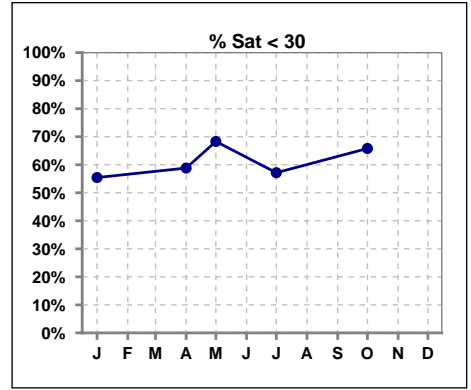


	Jan	Feb	Mar	Apr	May	Jun	Jul	Aug	Sep	Oct	Nov	Dec
# Ferritin	1518			1538	435		1531			1534		
# Ferritin > 1200	95			150	42		127			135		
Pop. Mean	691			751	745		737			733		
Std. Deviation	546			403	459		401			416		
% Ferritin > 1200	6%			10%	10%		8%			9%		

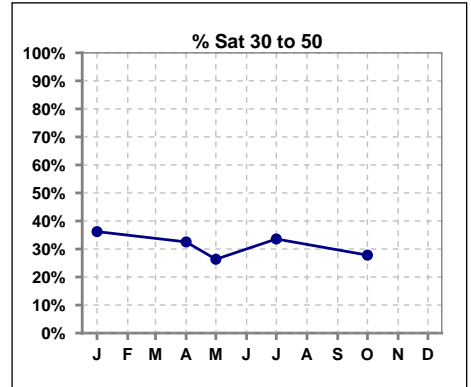


V. ANEMIA - CONT.

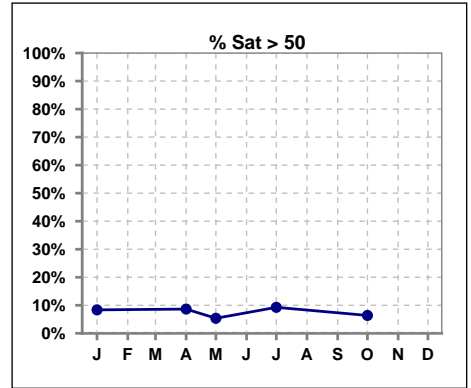
	Jan	Feb	Mar	Apr	May	Jun	Jul	Aug	Sep	Oct	Nov	Dec
# % Sat	1519			1537	429		1531			1535		
# % Sat < 30	842			904	293		875			1010		
Pop. Mean	31			30	27		31			28		
Std. Deviation	15			16	14		16			15		
% % Sat < 30	55%			59%	68%		57%			66%		



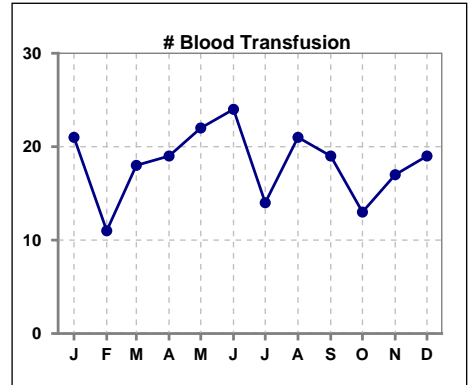
	Jan	Feb	Mar	Apr	May	Jun	Jul	Aug	Sep	Oct	Nov	Dec
# % Sat	1519			1537	429		1531			1535		
# % Sat 30 to 50	550			500	113		514			427		
Pop. Mean	31			30	27		31			28		
Std. Deviation	15			16	14		16			15		
% % Sat 30 to 50	36%			33%	26%		34%			28%		



	Jan	Feb	Mar	Apr	May	Jun	Jul	Aug	Sep	Oct	Nov	Dec
# % Sat	1519			1537	429		1531			1535		
# % Sat > 50	127			133	23		142			98		
Pop. Mean	31			30	27		31			28		
Std. Deviation	15			16	14		16			15		
% % Sat > 50	8%			9%	5%		9%			6%		



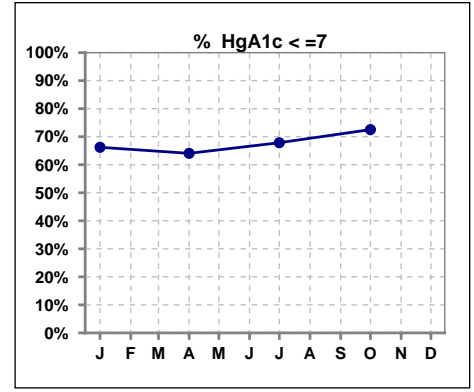
	Jan	Feb	Mar	Apr	May	Jun	Jul	Aug	Sep	Oct	Nov	Dec
# Patient	1529	1536	1539	1553	1563	1566	1706	1713	1711	1710	1717	1741
# Blood Transfusion	21	11	18	19	22	24	14	21	19	13	17	19



Methodology: a) All labs for 'Adequacy of Dialysis', 'Nutrition', 'Osteodystrophy', 'Anemia' and 'Diabetes' based on last value of month; b) BP's and #L processed are average of all values for month; c) Access data takes last access of month; d) Values for SGA and 'Infection Control' use most recent result.

VI. Diabetes

	Jan	Feb	Mar	Apr	May	Jun	Jul	Aug	Sep	Oct	Nov	Dec
# HgA1c	903			910			899			914		
# HgA1c <= 7	598			583			610			663		
Pop. Mean	6.7			6.8			6.7			6.5		
Std. Deviation	1.46			1.50			1.48			1.35		
% HgA1c <= 7	66%			64%			68%			73%		

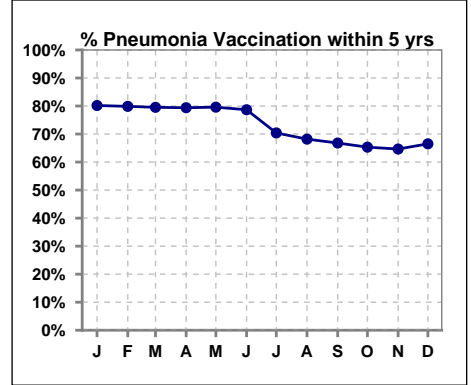


Methodology: a) All labs for 'Adequacy of Dialysis', 'Nutrition', 'Osteodystrophy', 'Anemia' and 'Diabetes' based on last value of month; b) BP's and #L processed are average of all values for month; c) Access data takes last access of month; d) Values for SGA and 'Infection Control' use most recent result.

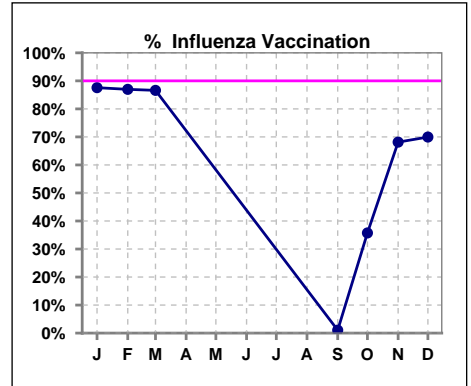
VII. Infection Control

Pneumonia vaccination within the past five years

	Jan	Feb	Mar	Apr	May	Jun	Jul	Aug	Sep	Oct	Nov	Dec
# Patient	1529	1536	1539	1553	1563	1566	1706	1713	1711	1710	1717	1741
# Pneumonia	1226	1227	1224	1233	1244	1232	1201	1168	1143	1117	1110	1158
% Pneumonia	80%	80%	80%	79%	80%	79%	70%	68%	67%	65%	65%	67%



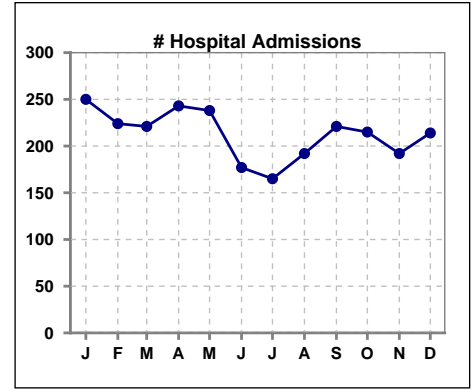
	Jan	Feb	Mar	Apr	May	Jun	Jul	Aug	Sep	Oct	Nov	Dec
# Patient	1529	1536	1539						1711	1710	1717	1741
# Influenza	1339	1336	1333						18	611	1170	1218
% Influenza	88%	87%	87%						1%	36%	68%	70%



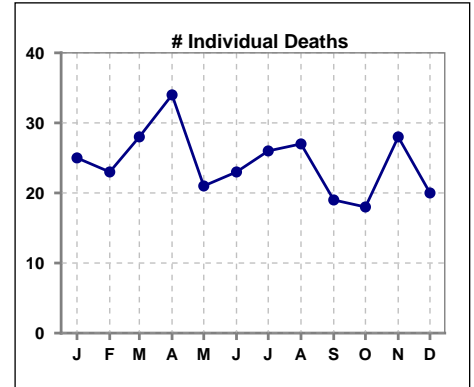
Methodology: a) All labs for 'Adequacy of Dialysis', 'Nutrition', 'Osteodystrophy', 'Anemia' and 'Diabetes' based on last value of month; b) BP's and #L processed are average of all values for month; c) Access data takes last access of month; d) Values for SGA and 'Infection Control' use most recent result.

VIII. Outcome measures

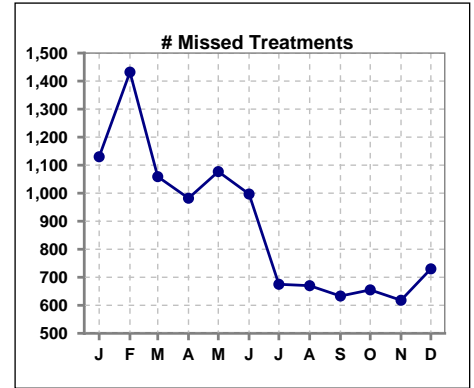
	Jan	Feb	Mar	Apr	May	Jun	Jul	Aug	Sep	Oct	Nov	Dec
# Patient	1529	1536	1539	1553	1563	1566	1706	1713	1711	1710	1717	1741
# Hospital Admissions	250	224	221	243	238	177	165	192	221	215	192	214



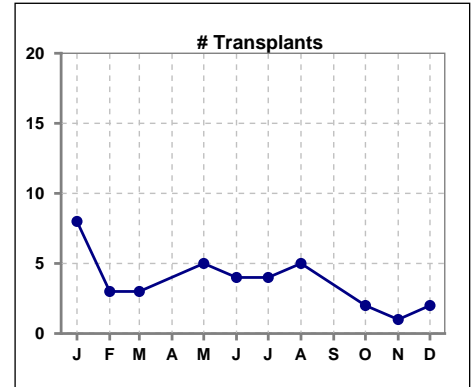
	Jan	Feb	Mar	Apr	May	Jun	Jul	Aug	Sep	Oct	Nov	Dec
# Patient	1529	1536	1539	1553	1563	1566	1706	1713	1711	1710	1717	1741
# Individual Deaths	25	23	28	34	21	23	26	27	19	18	28	20



	Jan	Feb	Mar	Apr	May	Jun	Jul	Aug	Sep	Oct	Nov	Dec
# Patient	1529	1536	1539	1553	1563	1566	1706	1713	1711	1710	1717	1741
# Missed Treatments	1130	1432	1059	982	1077	997	675	670	633	655	618	730



	Jan	Feb	Mar	Apr	May	Jun	Jul	Aug	Sep	Oct	Nov	Dec
# Patient	1529	1536	1539	1553	1563	1566	1706	1713	1711	1710	1717	1741
# Transplants	8	3	3		5	4	4	5		2	1	2



Methodology: a) All labs for 'Adequacy of Dialysis', 'Nutrition', 'Osteodystrophy', 'Anemia' and 'Diabetes' based on last value of month; b) BP's and #L processed are average of all values for month; c) Access data takes last access of month; d) Values for SGA and 'Infection Control' use most recent result.