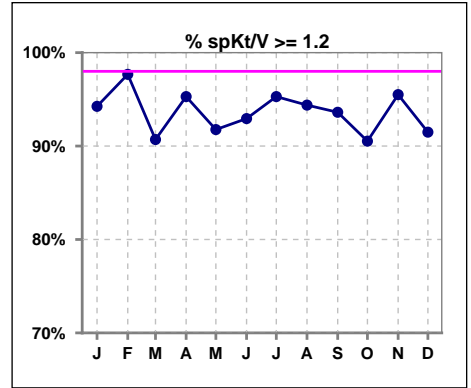
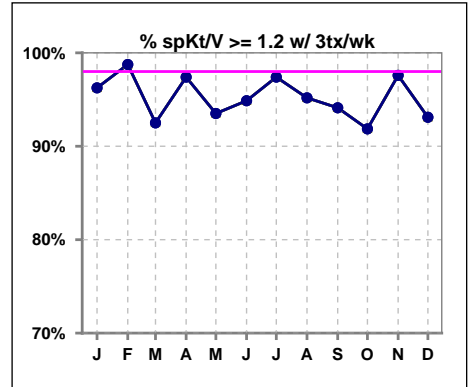


I. ADEQUACY OF DIALYSIS

	Jan	Feb	Mar	Apr	May	Jun	Jul	Aug	Sep	Oct	Nov	Dec
# spKt/V	87	86	86	85	85	85	85	89	94	95	89	94
# spKt/V >= 1.2	82	84	78	81	78	79	81	84	88	86	85	86
Pop. Mean	1.57	1.59	1.60	1.58	1.64	1.57	1.77	1.82	1.86	1.58	1.61	1.59
Std. Deviation	0.27	0.27	0.32	0.26	0.34	0.32	1.16	1.12	1.32	0.34	0.32	0.34
% spKt/V >= 1.2	94%	98%	91%	95%	92%	93%	95%	94%	94%	91%	96%	91%

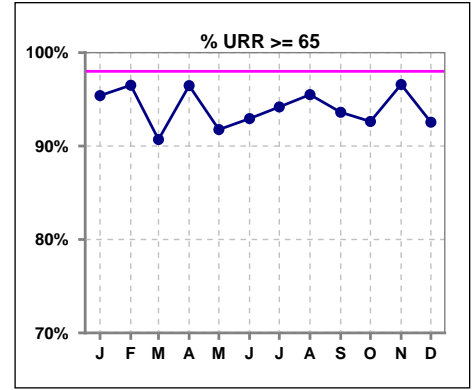


	Jan	Feb	Mar	Apr	May	Jun	Jul	Aug	Sep	Oct	Nov	Dec
# spKt/V w/ 3tx/wk	80	80	80	77	77	78	77	83	85	86	83	87
# spKt/V >= 1.2 w/3tx/wk	77	79	74	75	72	74	75	79	80	79	81	81
Pop. Mean	1.58	1.60	1.61	1.60	1.66	1.58	1.64	1.84	1.71	1.59	1.63	1.61
Std. Deviation	0.24	0.25	0.30	0.24	0.32	0.29	0.30	1.16	0.84	0.34	0.31	0.34
% >= 1.2 w/3tx/wk	96%	99%	93%	97%	94%	95%	97%	95%	94%	92%	98%	93%

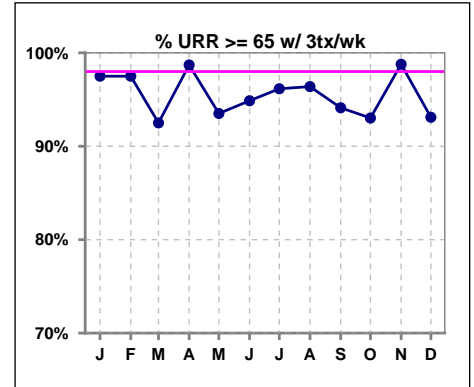


I. ADEQUACY OF DIALYSIS - CONT.

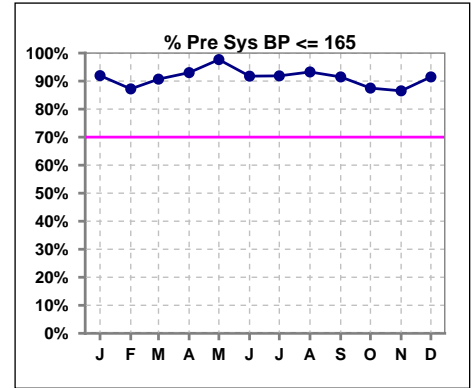
	Jan	Feb	Mar	Apr	May	Jun	Jul	Aug	Sep	Oct	Nov	Dec
# URR	87	86	86	85	85	85	86	89	94	95	88	94
# URR >= 65	83	83	78	82	78	79	81	85	88	88	85	87
Pop. Mean	74	75	74	75	75	74	74	75	75	74	75	74
Std. Deviation	6.95	5.77	7.53	5.68	7.00	7.24	9.26	8.52	6.25	7.29	6.14	7.14
% URR >= 65	95%	97%	91%	96%	92%	93%	94%	96%	94%	93%	97%	93%



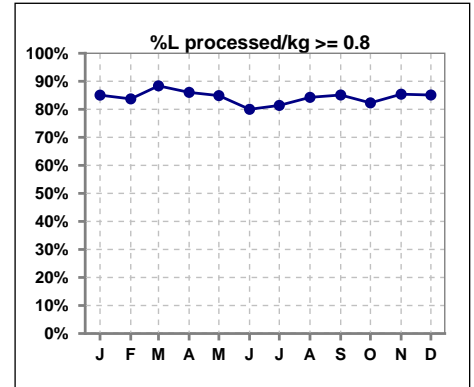
	Jan	Feb	Mar	Apr	May	Jun	Jul	Aug	Sep	Oct	Nov	Dec
# URR w/ 3tx/wk	80	80	80	77	77	78	78	83	85	86	82	87
# URR>=65 w/ 3tx/wk	78	78	74	76	72	74	75	80	80	80	81	81
Pop. Mean	75	75	75	75	76	74	75	75	75	74	75	74
Std. Deviation	5.15	5.44	6.90	4.73	6.46	6.55	7.69	8.55	6.12	7.40	5.50	7.00
% URR>=65 w/ 3tx/wk	98%	98%	93%	99%	94%	95%	96%	96%	94%	93%	99%	93%



	Jan	Feb	Mar	Apr	May	Jun	Jul	Aug	Sep	Oct	Nov	Dec
# Pre Sys BP	87	86	86	86	86	85	86	89	94	96	89	94
# Pre Sys BP <= 165	80	75	78	80	84	78	79	84	87	85	78	87
Pop. Mean	140	140	138	136	134	135	135	135	137	140	139	140
Std. Deviation	20.4	21.3	21.3	20.8	19.1	20.8	19.3	17.5	19.2	19.5	19.5	19.1
% Pre Sys BP <=165	92%	87%	91%	93%	98%	92%	92%	93%	91%	88%	87%	91%



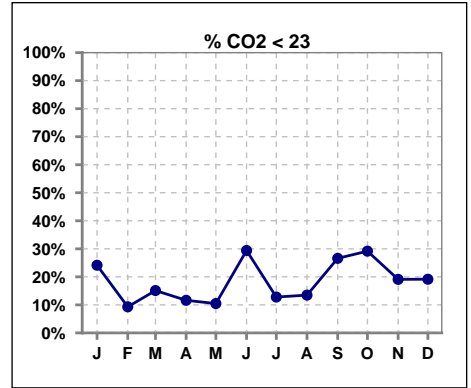
	Jan	Feb	Mar	Apr	May	Jun	Jul	Aug	Sep	Oct	Nov	Dec
# L processed/kg	87	86	86	86	86	85	86	89	94	96	89	94
# L processed/kg>=0.8	74	72	76	74	73	68	70	75	80	79	76	80
Pop. Mean	1	1	1	1	1	1	1	1	1	1	1	1
Std. Deviation	0.3	0.3	0.3	0.3	0.3	0.3	0.3	0.3	0.3	0.3	0.3	0.3
% L processed/kg>=0.8	85%	84%	88%	86%	85%	80%	81%	84%	85%	82%	85%	85%



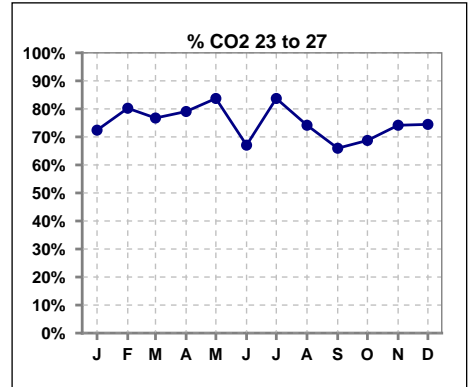
Methodology: a) All labs for 'Adequacy of Dialysis', 'Nutrition', 'Osteodystrophy', 'Anemia' and 'Diabetes' based on last value of month; b) BP's and #L processed are average of all values for month; c) Access data takes last access of month; d) Values for SGA and 'Infection Control' use most recent result.

I. ADEQUACY OF DIALYSIS - CONT.

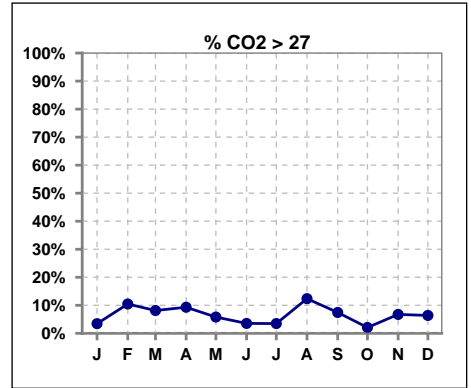
	Jan	Feb	Mar	Apr	May	Jun	Jul	Aug	Sep	Oct	Nov	Dec
# CO2	87	86	86	86	86	85	86	89	94	96	89	94
# CO2 < 23	21	8	13	10	9	25	11	12	25	28	17	18
Pop. Mean	24	25	25	25	25	24	24	25	24	24	24	24
Std. Deviation	1.91	1.90	2.07	2.25	1.80	2.21	1.75	2.49	2.38	2.11	2.25	2.30
% CO2 < 23	24%	9%	15%	12%	10%	29%	13%	13%	27%	29%	19%	19%



	Jan	Feb	Mar	Apr	May	Jun	Jul	Aug	Sep	Oct	Nov	Dec
# CO2	87	86	86	86	86	85	86	89	94	96	89	94
# CO2 23 to 27	63	69	66	68	72	57	72	66	62	66	66	70
Pop. Mean	24	25	25	25	25	24	24	25	24	24	24	24
Std. Deviation	1.91	1.90	2.07	2.25	1.80	2.21	1.75	2.49	2.38	2.11	2.25	2.30
% CO2 23 to 27	72%	80%	77%	79%	84%	67%	84%	74%	66%	69%	74%	74%



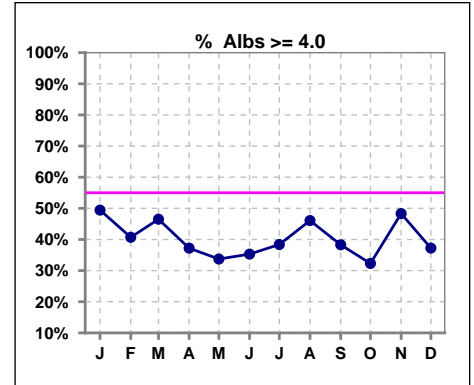
	Jan	Feb	Mar	Apr	May	Jun	Jul	Aug	Sep	Oct	Nov	Dec
# CO2	87	86	86	86	86	85	86	89	94	96	89	94
# CO2 > 27	3	9	7	8	5	3	3	11	7	2	6	6
Pop. Mean	24	25	25	25	25	24	24	25	24	24	24	24
Std. Deviation	1.91	1.90	2.07	2.25	1.80	2.21	1.75	2.49	2.38	2.11	2.25	2.30
% CO2 > 27	3%	10%	8%	9%	6%	4%	3%	12%	7%	2%	7%	6%



*Albumin values use BCG method - as of July 2001

II. NUTRITION

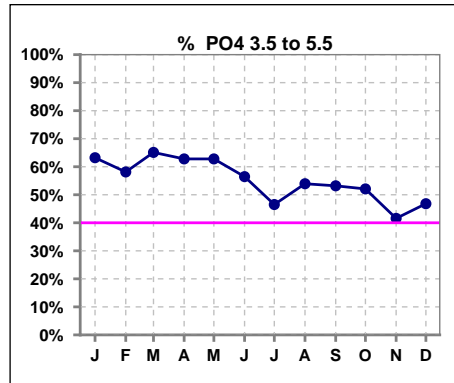
	Jan	Feb	Mar	Apr	May	Jun	Jul	Aug	Sep	Oct	Nov	Dec
# Albumin	87	86	86	86	86	85	86	89	94	96	89	94
# Albumin >= 4.0	43	35	40	32	29	30	33	41	36	31	43	35
Pop. Mean	3.9	3.8	3.8	3.7	3.8	3.8	3.8	3.9	3.9	3.8	3.9	3.8
Std. Deviation	0.39	0.40	0.41	0.43	0.39	0.38	0.36	0.37	0.36	0.34	0.37	0.41
% Alb >= 4.0	49%	41%	47%	37%	34%	35%	38%	46%	38%	32%	48%	37%



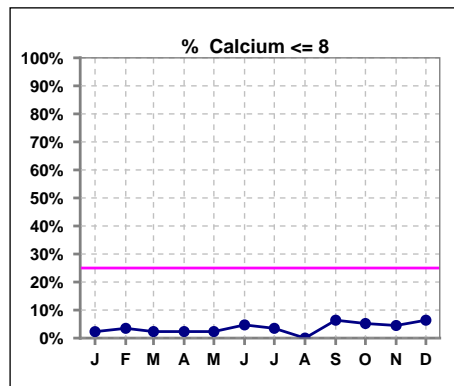
Lab methodology for PTH changed January 2012

III. OSTEODYSTROPHY

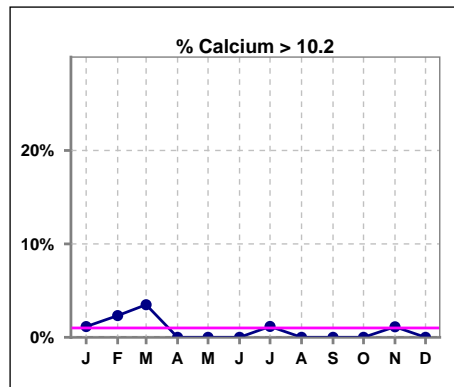
	Jan	Feb	Mar	Apr	May	Jun	Jul	Aug	Sep	Oct	Nov	Dec
# PO4	87	86	86	86	86	85	86	89	94	96	89	94
# PO4 3.5 to 5.5	55	50	56	54	54	48	40	48	50	50	37	44
Pop. Mean	5.4	5.6	5.2	5.4	5.6	5.7	5.6	5.6	5.6	5.5	5.9	5.6
Std. Deviation	1.72	1.67	1.54	1.45	1.75	1.74	1.43	1.68	1.64	1.66	1.72	1.58
% PO4 3.5 to 5.5	63%	58%	65%	63%	63%	56%	47%	54%	53%	52%	42%	47%



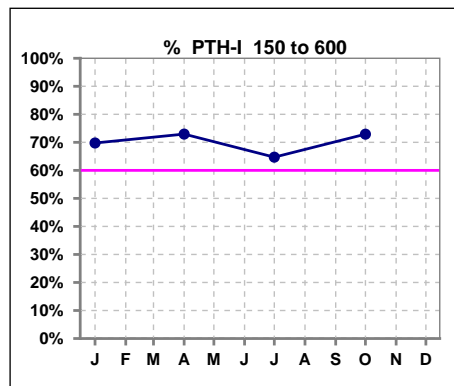
	Jan	Feb	Mar	Apr	May	Jun	Jul	Aug	Sep	Oct	Nov	Dec
# Calcium	87	86	86	86	86	85	86	89	94	96	89	94
# Calcium <= 8	2	3	2	2	2	4	3	0	6	5	4	6
Pop. Mean	9.1	9.1	9.3	9.1	9.2	9.1	9.2	9.3	9.1	9.0	9.2	9.2
Std. Deviation	0.52	0.59	0.60	0.54	0.56	0.56	0.56	0.52	0.62	0.62	0.72	0.56
% Calcium <= 8	2%	3%	2%	2%	2%	5%	3%	0%	6%	5%	4%	6%



	Jan	Feb	Mar	Apr	May	Jun	Jul	Aug	Sep	Oct	Nov	Dec
# Calcium	87	86	86	86	86	85	86	89	94	96	89	94
# Calcium > 10.2	1	2	3	0	0	0	1	0	0	0	1	0
Pop. Mean	9.1	9.1	9.3	9.1	9.2	9.1	9.2	9.3	9.1	9.0	9.2	9.2
Std. Deviation	0.52	0.59	0.60	0.54	0.56	0.56	0.56	0.52	0.62	0.62	0.72	0.56
% Calcium > 10.2	1%	2%	3%	0%	0%	0%	1%	0%	0%	0%	1%	0%



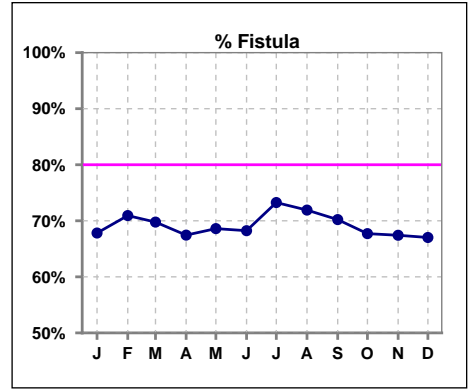
	Jan	Feb	Mar	Apr	May	Jun	Jul	Aug	Sep	Oct	Nov	Dec
# PTH-I	86			85			85			96		
# PTH-I 150 to 600	60			62			55			70		
Pop. Mean	318			338			370			326		
Std. Deviation	210			352			357			219		
% PTH-I 150 to 600	70%			73%			65%			73%		



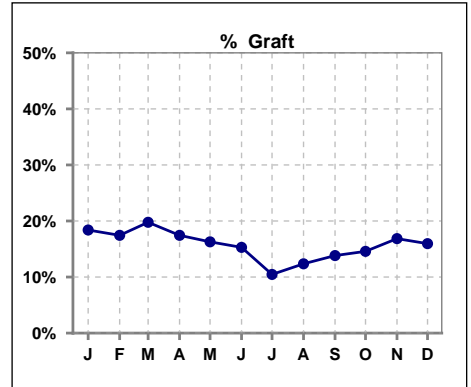
Methodology: a) All labs for 'Adequacy of Dialysis', 'Nutrition', 'Osteodystrophy', 'Anemia' and 'Diabetes' based on last value of month; b) BP's and #L processed are average of all values for month; c) Access data takes last access of month; d) Values for SGA and 'Infection Control' use most recent result.

IV. ACCESS

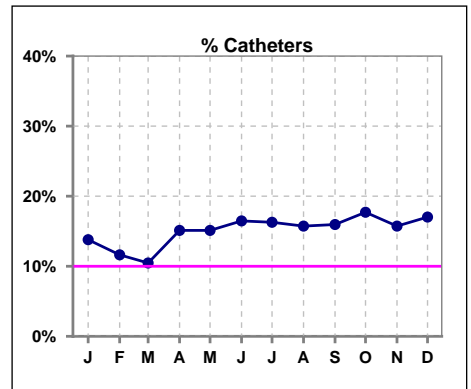
	Jan	Feb	Mar	Apr	May	Jun	Jul	Aug	Sep	Oct	Nov	Dec
# Access	87	86	86	86	86	85	86	89	94	96	89	94
# Fistula	59	61	60	58	59	58	63	64	66	65	60	63
% Fistula	68%	71%	70%	67%	69%	68%	73%	72%	70%	68%	67%	67%



	Jan	Feb	Mar	Apr	May	Jun	Jul	Aug	Sep	Oct	Nov	Dec
# Access	87	86	86	86	86	85	86	89	94	96	89	94
# Graft	16	15	17	15	14	13	9	11	13	14	15	15
% Graft	18%	17%	20%	17%	16%	15%	10%	12%	14%	15%	17%	16%



	Jan	Feb	Mar	Apr	May	Jun	Jul	Aug	Sep	Oct	Nov	Dec
# Access	87	86	86	86	86	85	86	89	94	96	89	94
# Catheters	12	10	9	13	13	14	14	14	15	17	14	16
% Catheters	14%	12%	10%	15%	15%	16%	16%	16%	16%	18%	16%	17%



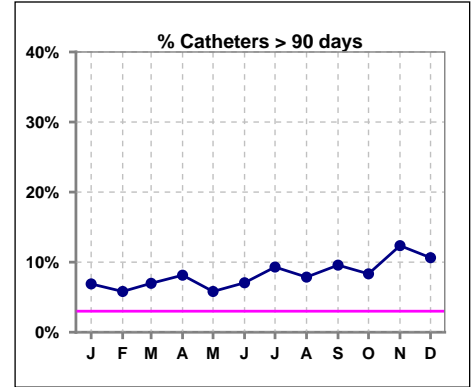
Methodology: a) All labs for 'Adequacy of Dialysis', 'Nutrition', 'Osteodystrophy', 'Anemia' and 'Diabetes' based on last value of month; b) BP's and #L processed are average of all values for month; c) Access data takes last access of month; d) Values for SGA and 'Infection Control' use most recent result.

IV. ACCESS - CONT.

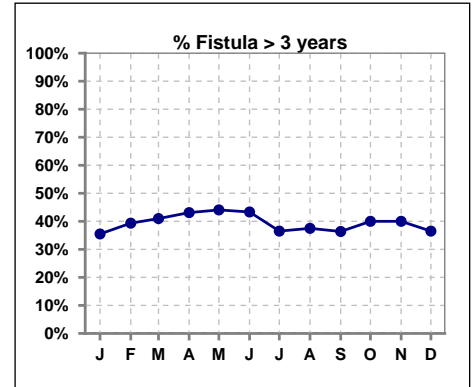
Catheters > 90 days

	Jan	Feb	Mar	Apr	May	Jun	Jul	Aug	Sep	Oct	Nov	Dec
# Access	87	86	86	86	86	85	86	89	94	96	89	94
# Catheters	6	5	6	7	5	6	8	7	9	8	11	10
% Catheters	7%	6%	7%	8%	6%	7%	9%	8%	10%	8%	12%	11%

Definition: Catheter in use on last treatment of the month



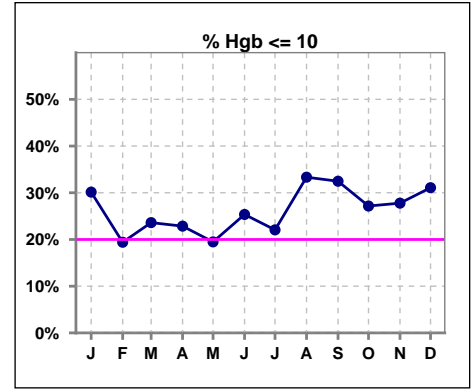
	Jan	Feb	Mar	Apr	May	Jun	Jul	Aug	Sep	Oct	Nov	Dec
# Fistula	62	61	61	58	59	60	63	64	66	65	60	63
# Fistula > 3 yrs	22	24	25	25	26	26	23	24	24	26	24	23
% Fistula > 3 yrs	35%	39%	41%	43%	44%	43%	37%	38%	36%	40%	40%	37%



V. ANEMIA

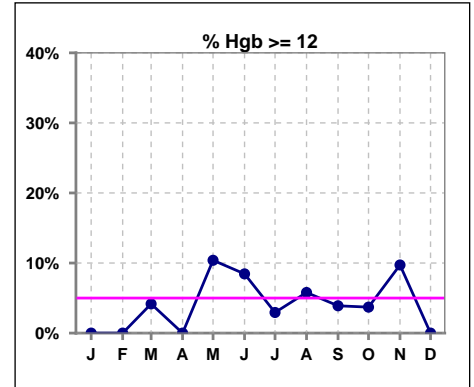
	Jan	Feb	Mar	Apr	May	Jun	Jul	Aug	Sep	Oct	Nov	Dec
# Hgb	73	67	72	70	77	71	68	69	77	81	72	74
# Hgb <= 10	22	13	17	16	15	18	15	23	25	22	20	23
Pop. Mean	10.5	10.7	10.6	10.5	10.8	10.6	10.4	10.4	10.4	10.5	10.6	10.3
Std. Deviation	0.9	0.9	1.1	1.3	1.2	1.2	1.2	1.2	1.2	1.2	1.3	1.0
% Hgb <= 10	30%	19%	24%	23%	19%	25%	22%	33%	32%	27%	28%	31%

Note: Excludes patients who received no ESA in month.



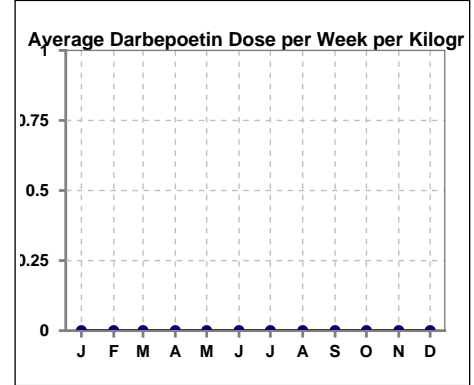
	Jan	Feb	Mar	Apr	May	Jun	Jul	Aug	Sep	Oct	Nov	Dec
# Hgb	73	67	72	70	77	71	68	69	77	81	72	74
# Hgb >= 12	0	0	3	0	8	6	2	4	3	3	7	0
Pop. Mean	10.5	10.7	10.6	10.5	10.8	10.6	10.4	10.4	10.4	10.5	10.6	10.3
Std. Deviation	0.9	0.9	1.1	1.3	1.2	1.2	1.2	1.2	1.2	1.2	1.3	1.0
% Hgb >= 12	0%	0%	4%	0%	10%	8%	3%	6%	4%	4%	10%	0%

Note: Excludes patients who received no ESA in month.



Average Darbepoetin Dose per Week per Kilogram

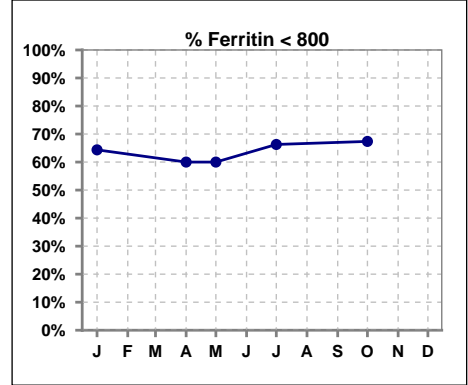
	Jan	Feb	Mar	Apr	May	Jun	Jul	Aug	Sep	Oct	Nov	Dec
# Average Darbepoetin	0	0	0	0	0	0	0	0	0	0	0	0



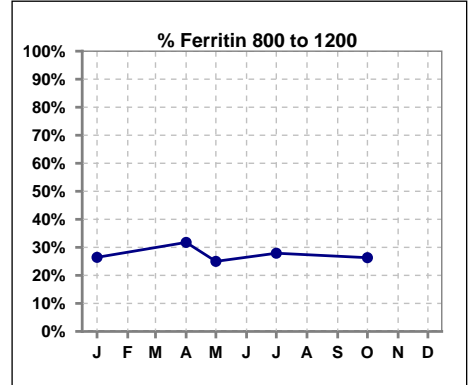
V. ANEMIA - CONT.

Iron Profile

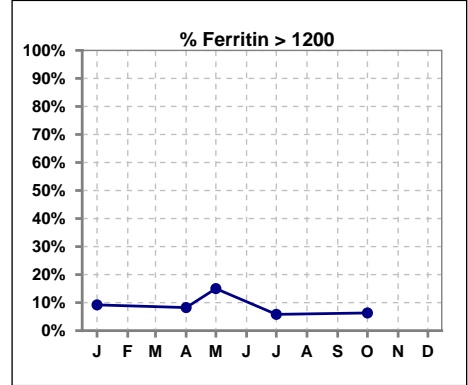
	Jan	Feb	Mar	Apr	May	Jun	Jul	Aug	Sep	Oct	Nov	Dec
# Ferritin	87			85	20		86			95		
# Ferritin < 800	56			51	12		57			64		
Pop. Mean	820			765	811		695			696		
Std. Deviation	970			486	473		550			515		
% Ferritin < 800	64%			60%	60%		66%			67%		



	Jan	Feb	Mar	Apr	May	Jun	Jul	Aug	Sep	Oct	Nov	Dec
# Ferritin	87			85	20		86			95		
# Ferritin 800 to 1200	23			27	5		24			25		
Pop. Mean	820			765	811		695			696		
Std. Deviation	970			486	473		550			515		
% Ferritin 800 to 1200	26%			32%	25%		28%			26%		



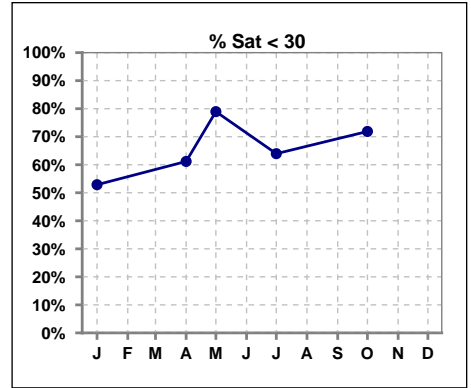
	Jan	Feb	Mar	Apr	May	Jun	Jul	Aug	Sep	Oct	Nov	Dec
# Ferritin	87			85	20		86			95		
# Ferritin > 1200	8			7	3		5			6		
Pop. Mean	820			765	811		695			696		
Std. Deviation	970			486	473		550			515		
% Ferritin > 1200	9%			8%	15%		6%			6%		



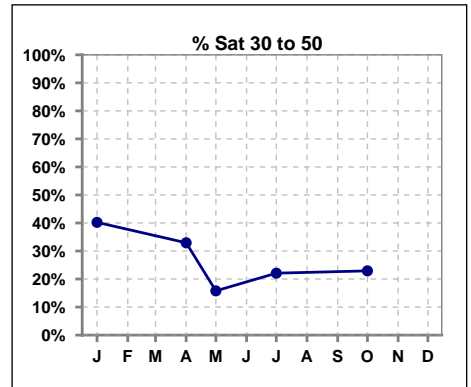
Methodology: a) All labs for 'Adequacy of Dialysis', 'Nutrition', 'Osteodystrophy', 'Anemia' and 'Diabetes' based on last value of month; b) BP's and #L processed are average of all values for month; c) Access data takes last access of month; d) Values for SGA and 'Infection Control' use most recent result.

V. ANEMIA - CONT.

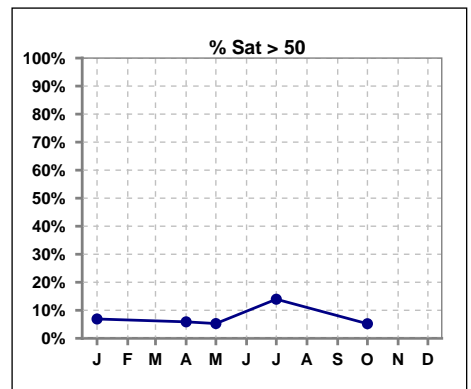
	Jan	Feb	Mar	Apr	May	Jun	Jul	Aug	Sep	Oct	Nov	Dec
# % Sat	87			85	19		86			96		
# % Sat < 30	46			52	15		55			69		
Pop. Mean	31			29	26		30			26		
Std. Deviation	12			16	12		16			15		
% % Sat < 30	53%			61%	79%		64%			72%		



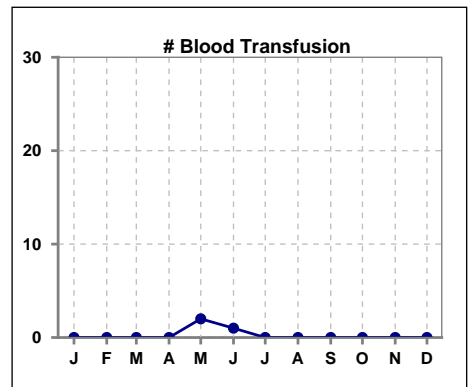
	Jan	Feb	Mar	Apr	May	Jun	Jul	Aug	Sep	Oct	Nov	Dec
# % Sat	87			85	19		86			96		
# % Sat 30 to 50	35			28	3		19			22		
Pop. Mean	31			29	26		30			26		
Std. Deviation	12			16	12		16			15		
% % Sat 30 to 50	40%			33%	16%		22%			23%		



	Jan	Feb	Mar	Apr	May	Jun	Jul	Aug	Sep	Oct	Nov	Dec
# % Sat	87			85	19		86			96		
# % Sat > 50	6			5	1		12			5		
Pop. Mean	31			29	26		30			26		
Std. Deviation	12			16	12		16			15		
% % Sat > 50	7%			6%	5%		14%			5%		



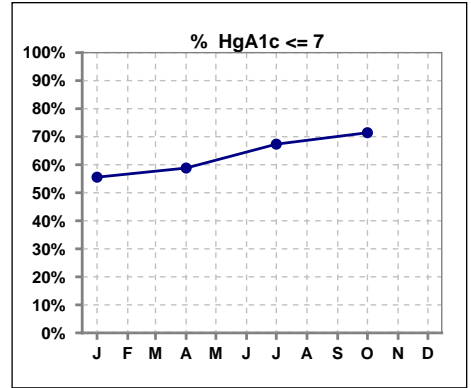
	Jan	Feb	Mar	Apr	May	Jun	Jul	Aug	Sep	Oct	Nov	Dec
# Patient	87	86	86	87	88	85	86	90	94	96	90	94
# Blood Transfusion	0	0	0	0	2	1	0	0	0	0	0	0



Methodology: a) All labs for 'Adequacy of Dialysis', 'Nutrition', 'Osteodystrophy', 'Anemia' and 'Diabetes' based on last value of month; b) BP's and #L processed are average of all values for month; c) Access data takes last access of month; d) Values for SGA and 'Infection Control' use most recent result.

VI. Diabetes

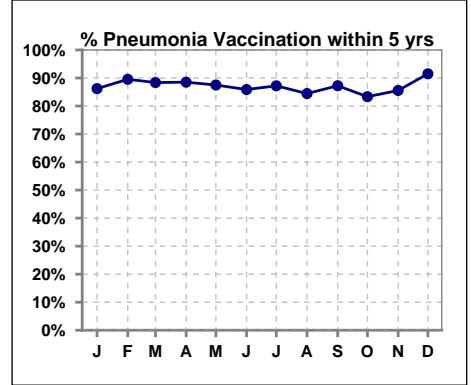
	Jan	Feb	Mar	Apr	May	Jun	Jul	Aug	Sep	Oct	Nov	Dec
# HgA1c	45			51			49			56		
# HgA1c <= 7	25			30			33			40		
Pop. Mean	6.9			6.8			6.5			6.5		
Std. Deviation	1.60			1.39			1.32			1.45		
% HgA1c <= 7	56%			59%			67%			71%		



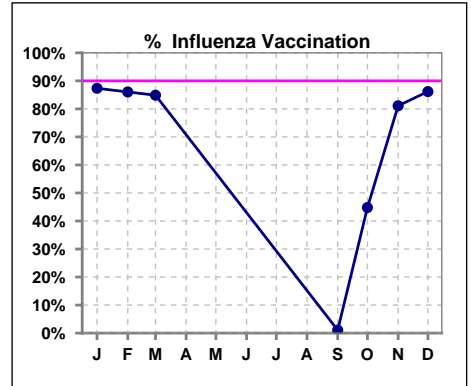
VII. Infection Control

Pneumonia vaccination within the past five years

	Jan	Feb	Mar	Apr	May	Jun	Jul	Aug	Sep	Oct	Nov	Dec
# Patient	87	86	86	87	88	85	86	90	94	96	90	94
# Pneumonia	75	77	76	77	77	73	75	76	82	80	77	86
% Pneumonia	86%	90%	88%	89%	88%	86%	87%	84%	87%	83%	86%	91%



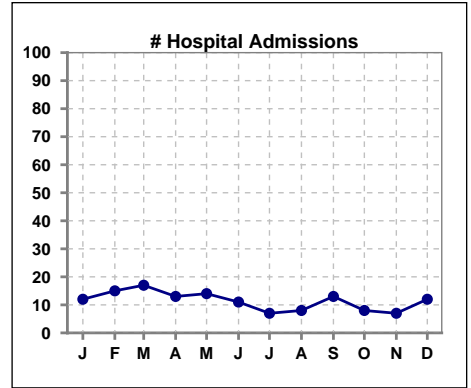
	Jan	Feb	Mar	Apr	May	Jun	Jul	Aug	Sep	Oct	Nov	Dec
# Patient	87	86	86						94	96	90	94
# Influenza	76	74	73						1	43	73	81
% Influenza	87%	86%	85%						1%	45%	81%	86%



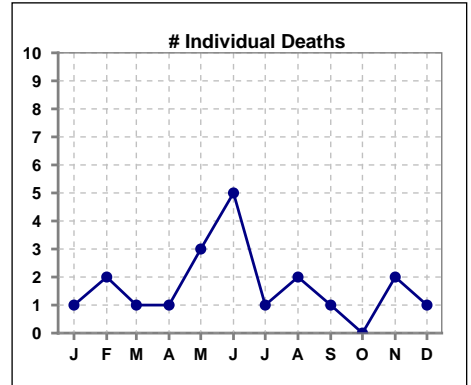
Methodology: a) All labs for 'Adequacy of Dialysis', 'Nutrition', 'Osteodystrophy', 'Anemia' and 'Diabetes' based on last value of month; b) BP's and #L processed are average of all values for month; c) Access data takes last access of month; d) Values for SGA and 'Infection Control' use most recent result.

VIII. Outcome measures

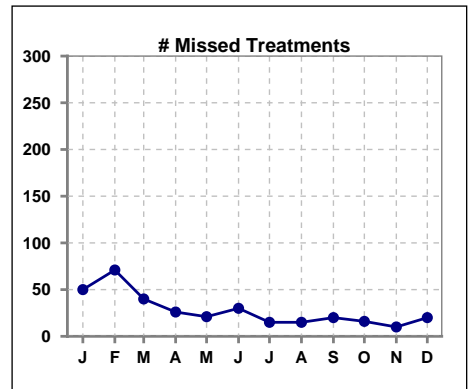
	Jan	Feb	Mar	Apr	May	Jun	Jul	Aug	Sep	Oct	Nov	Dec
# Patient	87	86	86	87	88	85	86	90	94	96	90	94
# Hospital Admissions	12	15	17	13	14	11	7	8	13	8	7	12



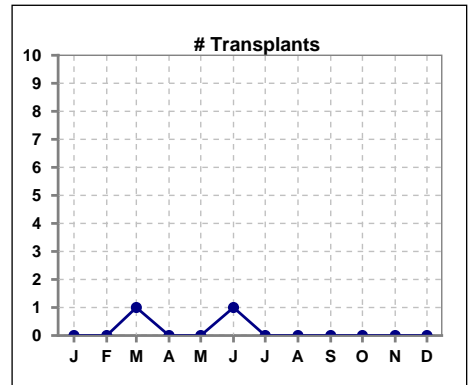
	Jan	Feb	Mar	Apr	May	Jun	Jul	Aug	Sep	Oct	Nov	Dec
# Patient	87	86	86	87	88	85	86	90	94	96	90	94
# Individual Deaths	1	2	1	1	3	5	1	2	1	0	2	1



	Jan	Feb	Mar	Apr	May	Jun	Jul	Aug	Sep	Oct	Nov	Dec
# Patient	87	86	86	87	88	85	86	90	94	96	90	94
# Missed Treatments	50	71	40	26	21	30	15	15	20	16	10	20



	Jan	Feb	Mar	Apr	May	Jun	Jul	Aug	Sep	Oct	Nov	Dec
# Patient	87	86	86	87	88	85	86	90	94	96	90	94
# Transplants	0	0	1	0	0	1	0	0	0	0	0	0



Methodology: a) All labs for 'Adequacy of Dialysis', 'Nutrition', 'Osteodystrophy', 'Anemia' and 'Diabetes' based on last value of month; b) BP's and #L processed are average of all values for month; c) Access data takes last access of month; d) Values for SGA and 'Infection Control' use most recent result.