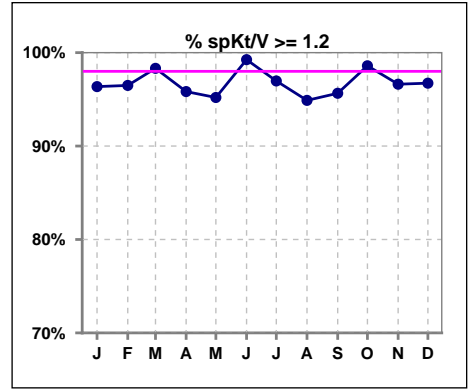
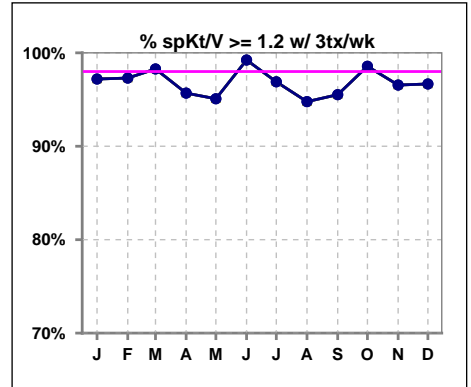


I. ADEQUACY OF DIALYSIS

	Jan	Feb	Mar	Apr	May	Jun	Jul	Aug	Sep	Oct	Nov	Dec
# spKt/V	110	114	119	120	125	133	132	137	138	142	148	153
# spKt/V >= 1.2	106	110	117	115	119	132	128	130	132	140	143	148
Pop. Mean	1.66	1.64	1.69	1.66	1.63	1.67	1.70	1.69	1.67	1.69	1.70	1.67
Std. Deviation	0.33	0.29	0.33	0.32	0.31	0.30	0.36	0.34	0.35	0.35	0.38	0.35
% spKt/V >= 1.2	96%	96%	98%	96%	95%	99%	97%	95%	96%	99%	97%	97%



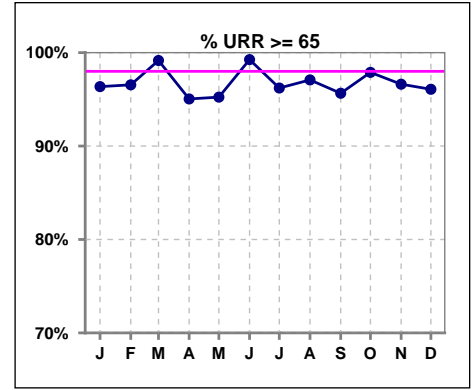
	Jan	Feb	Mar	Apr	May	Jun	Jul	Aug	Sep	Oct	Nov	Dec
# spKt/V w/ 3tx/wk	107	111	116	116	122	130	129	134	134	139	145	150
# spKt/V >= 1.2 w/3tx/wk	104	108	114	111	116	129	125	127	128	137	140	145
Pop. Mean	1.67	1.64	1.69	1.66	1.62	1.67	1.70	1.68	1.66	1.68	1.70	1.67
Std. Deviation	0.33	0.29	0.33	0.32	0.31	0.30	0.36	0.34	0.35	0.35	0.39	0.34
% >= 1.2 w/3tx/wk	97%	97%	98%	96%	95%	99%	97%	95%	96%	99%	97%	97%



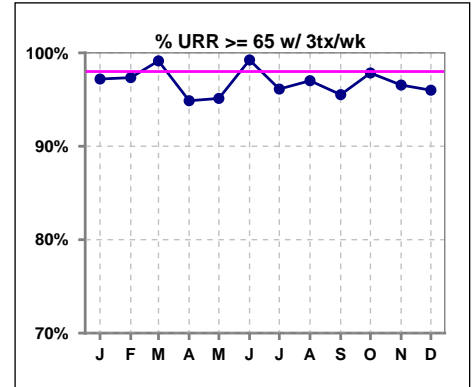
Methodology: a) All labs for 'Adequacy of Dialysis', 'Nutrition', 'Osteodystrophy', 'Anemia' and 'Diabetes' based on last value of month; b) BP's and #L processed are average of all values for month; c) Access data takes last access of month; d) Values for SGA and 'Infection Control' use most recent result.

I. ADEQUACY OF DIALYSIS - CONT.

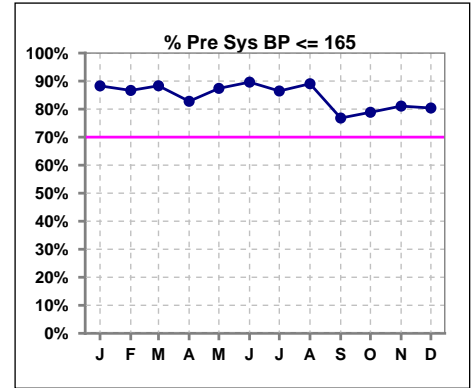
	Jan	Feb	Mar	Apr	May	Jun	Jul	Aug	Sep	Oct	Nov	Dec
# URR	110	116	119	121	126	134	132	137	138	142	148	153
# URR >= 65	106	112	118	115	120	133	127	133	132	139	143	147
Pop. Mean	76	76	76	76	75	76	76	76	75	76	76	76
Std. Deviation	6.71	6.31	5.82	6.49	6.54	6.26	6.64	7.28	6.89	6.40	7.10	6.82
% URR >= 65	96%	97%	99%	95%	95%	99%	96%	97%	96%	98%	97%	96%



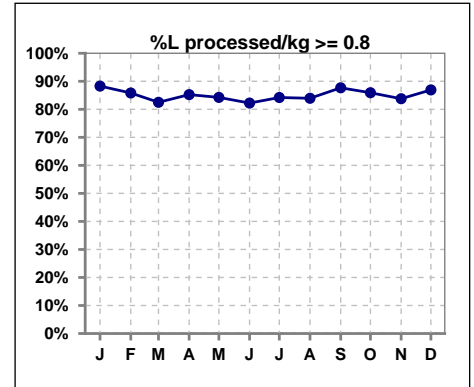
	Jan	Feb	Mar	Apr	May	Jun	Jul	Aug	Sep	Oct	Nov	Dec
# URR w/ 3tx/wk	107	113	116	117	123	131	129	134	134	139	145	150
# URR>=65 w/ 3tx/wk	104	110	115	111	117	130	124	130	128	136	140	144
Pop. Mean	76	76	76	76	75	76	76	76	75	76	76	75
Std. Deviation	6.70	6.19	5.76	6.52	6.56	6.28	6.61	7.29	6.90	6.38	7.14	6.82
% URR>=65 w/ 3tx/wk	97%	97%	99%	95%	95%	99%	96%	97%	96%	98%	97%	96%



	Jan	Feb	Mar	Apr	May	Jun	Jul	Aug	Sep	Oct	Nov	Dec
# Pre Sys BP	111	120	120	122	127	135	133	137	138	142	148	153
# Pre Sys BP <= 165	98	104	106	101	112	121	117	124	110	116	126	128
Pop. Mean	142	143	142	144	142	141	142	142	146	146	147	145
Std. Deviation	21.4	20.7	22.3	20.9	21.4	20.7	21.9	21.9	21.3	21.4	20.5	20.1
% Pre Sys BP <=165	88%	87%	88%	83%	87%	90%	86%	89%	77%	79%	81%	80%



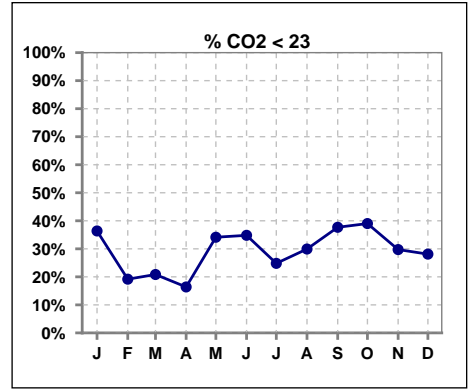
	Jan	Feb	Mar	Apr	May	Jun	Jul	Aug	Sep	Oct	Nov	Dec
# L processed/kg	111	120	120	122	127	135	133	137	138	142	148	153
# L processed/kg>=0.8	98	103	99	104	107	111	112	115	121	122	124	133
Pop. Mean	1	1	1	1	1	1	1	1	1	1	1	1
Std. Deviation	0.3	0.3	0.3	0.3	0.3	0.3	0.3	0.3	0.3	0.3	0.3	0.3
% L processed/kg>=0.8	88%	86%	83%	85%	84%	82%	84%	84%	88%	86%	84%	87%



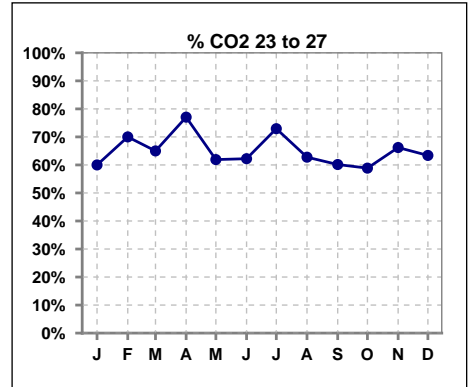
Methodology: a) All labs for 'Adequacy of Dialysis', 'Nutrition', 'Osteodystrophy', 'Anemia' and 'Diabetes' based on last value of month; b) BP's and #L processed are average of all values for month; c) Access data takes last access of month; d) Values for SGA and 'Infection Control' use most recent result.

I. ADEQUACY OF DIALYSIS - CONT.

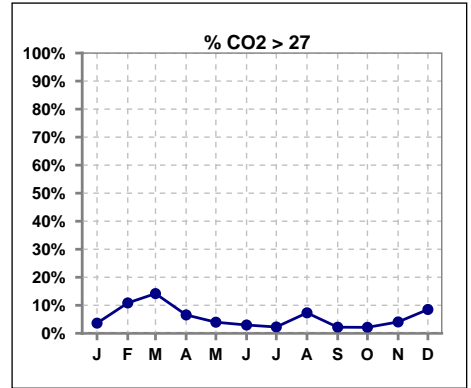
	Jan	Feb	Mar	Apr	May	Jun	Jul	Aug	Sep	Oct	Nov	Dec
# CO2	110	120	120	122	126	135	133	137	138	141	148	153
# CO2 < 23	40	23	25	20	43	47	33	41	52	55	44	43
Pop. Mean	23	25	25	25	23	23	24	24	23	23	24	24
Std. Deviation	2.55	2.82	2.84	2.41	2.61	2.56	2.52	2.67	2.45	2.24	2.36	2.72
% CO2 < 23	36%	19%	21%	16%	34%	35%	25%	30%	38%	39%	30%	28%



	Jan	Feb	Mar	Apr	May	Jun	Jul	Aug	Sep	Oct	Nov	Dec
# CO2	110	120	120	122	126	135	133	137	138	141	148	153
# CO2 23 to 27	66	84	78	94	78	84	97	86	83	83	98	97
Pop. Mean	23	25	25	25	23	23	24	24	23	23	24	24
Std. Deviation	2.55	2.82	2.84	2.41	2.61	2.56	2.52	2.67	2.45	2.24	2.36	2.72
% CO2 23 to 27	60%	70%	65%	77%	62%	62%	73%	63%	60%	59%	66%	63%



	Jan	Feb	Mar	Apr	May	Jun	Jul	Aug	Sep	Oct	Nov	Dec
# CO2	110	120	120	122	126	135	133	137	138	141	148	153
# CO2 > 27	4	13	17	8	5	4	3	10	3	3	6	13
Pop. Mean	23	25	25	25	23	23	24	24	23	23	24	24
Std. Deviation	2.55	2.82	2.84	2.41	2.61	2.56	2.52	2.67	2.45	2.24	2.36	2.72
% CO2 > 27	4%	11%	14%	7%	4%	3%	2%	7%	2%	2%	4%	8%

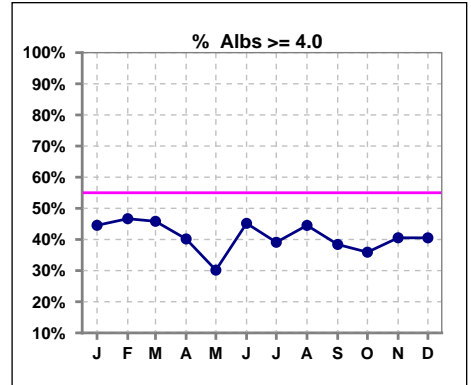


Methodology: a) All labs for 'Adequacy of Dialysis', 'Nutrition', 'Osteodystrophy', 'Anemia' and 'Diabetes' based on last value of month; b) BP's and #L processed are average of all values for month; c) Access data takes last access of month; d) Values for SGA and 'Infection Control' use most recent result.

*Albumin values use BCG method - as of July 2001

II. NUTRITION

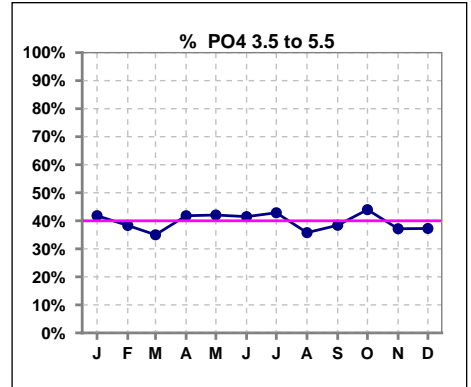
	Jan	Feb	Mar	Apr	May	Jun	Jul	Aug	Sep	Oct	Nov	Dec
# Albumin	110	120	120	122	126	135	133	137	138	142	148	153
# Albumin >= 4.0	49	56	55	49	38	61	52	61	53	51	60	62
Pop. Mean	3.8	3.9	3.9	3.8	3.8	3.9	3.8	3.9	3.8	3.8	3.8	3.8
Std. Deviation	0.49	0.43	0.40	0.41	0.38	0.39	0.38	0.40	0.37	0.38	0.37	0.43
% Alb >= 4.0	45%	47%	46%	40%	30%	45%	39%	45%	38%	36%	41%	41%



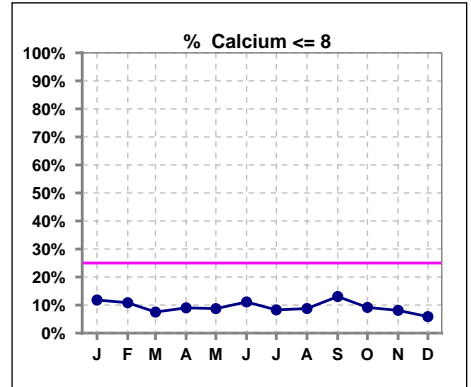
Lab methodology for PTH changed January 2012

III. OSTEODYSTROPHY

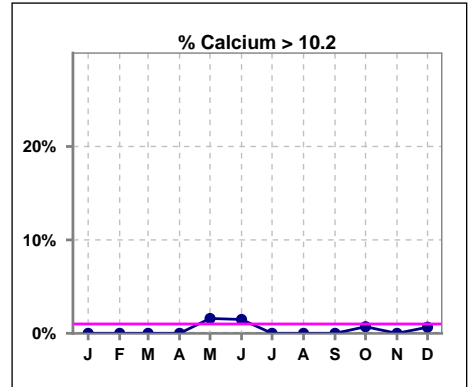
	Jan	Feb	Mar	Apr	May	Jun	Jul	Aug	Sep	Oct	Nov	Dec
# PO4	110	120	120	122	126	135	133	137	138	141	148	153
# PO4 3.5 to 5.5	46	46	42	51	53	56	57	49	53	62	55	57
Pop. Mean	5.8	5.9	5.9	5.7	6.1	6.1	5.7	5.9	6.0	5.7	5.9	6.0
Std. Deviation	2.00	1.99	2.07	1.81	2.18	2.05	1.83	1.99	1.88	1.86	1.92	1.80
% PO4 3.5 to 5.5	42%	38%	35%	42%	42%	41%	43%	36%	38%	44%	37%	37%



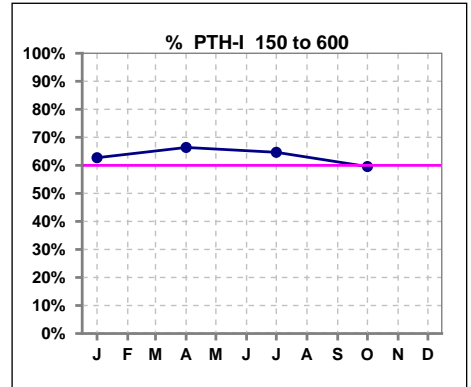
	Jan	Feb	Mar	Apr	May	Jun	Jul	Aug	Sep	Oct	Nov	Dec
# Calcium	110	120	120	122	126	135	133	137	138	142	148	153
# Calcium <= 8	13	13	9	11	11	15	11	12	18	13	12	9
Pop. Mean	9.0	9.0	9.2	9.1	9.1	9.1	9.1	9.1	9.0	9.0	9.1	9.1
Std. Deviation	0.82	0.78	0.74	0.73	0.82	0.84	0.78	0.77	0.83	0.81	0.76	0.76
% Calcium <= 8	12%	11%	8%	9%	9%	11%	8%	9%	13%	9%	8%	6%



	Jan	Feb	Mar	Apr	May	Jun	Jul	Aug	Sep	Oct	Nov	Dec
# Calcium	110	120	120	122	126	135	133	137	138	142	148	153
# Calcium > 10.2	0	0	0	0	2	2	0	0	0	1	0	1
Pop. Mean	9.0	9.0	9.2	9.1	9.1	9.1	9.1	9.1	9.0	9.0	9.1	9.1
Std. Deviation	0.82	0.78	0.74	0.73	0.82	0.84	0.78	0.77	0.83	0.81	0.76	0.76
% Calcium > 10.2	0%	0%	0%	0%	2%	1%	0%	0%	0%	1%	0%	1%



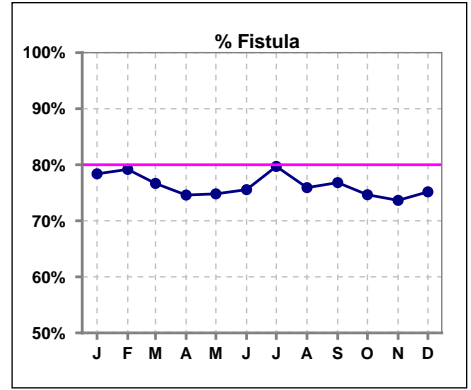
	Jan	Feb	Mar	Apr	May	Jun	Jul	Aug	Sep	Oct	Nov	Dec
# PTH-I	110			122			133			141		
# PTH-I 150 to 600	69			81			86			84		
Pop. Mean	573			513			474			486		
Std. Deviation	625			690			477			483		
% PTH-I 150 to 600	63%			66%			65%			60%		



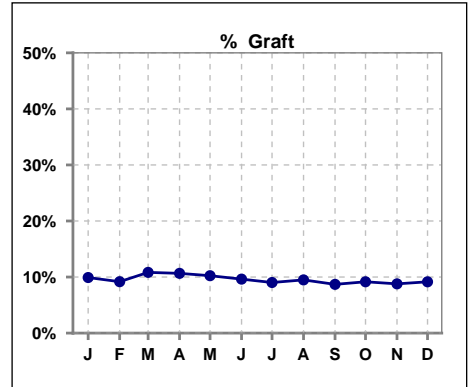
Methodology: a) All labs for 'Adequacy of Dialysis', 'Nutrition', 'Osteodystrophy', 'Anemia' and 'Diabetes' based on last value of month; b) BP's and #L processed are average of all values for month; c) Access data takes last access of month; d) Values for SGA and 'Infection Control' use most recent result.

IV. ACCESS

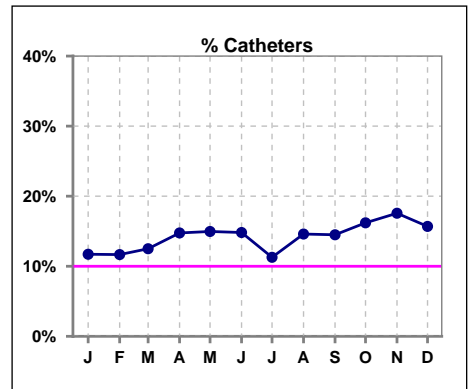
	Jan	Feb	Mar	Apr	May	Jun	Jul	Aug	Sep	Oct	Nov	Dec
# Access	111	120	120	122	127	135	133	137	138	142	148	153
# Fistula	87	95	92	91	95	102	106	104	106	106	109	115
% Fistula	78%	79%	77%	75%	75%	76%	80%	76%	77%	75%	74%	75%



	Jan	Feb	Mar	Apr	May	Jun	Jul	Aug	Sep	Oct	Nov	Dec
# Access	111	120	120	122	127	135	133	137	138	142	148	153
# Graft	11	11	13	13	13	13	12	13	12	13	13	14
% Graft	10%	9%	11%	11%	10%	10%	9%	9%	9%	9%	9%	9%



	Jan	Feb	Mar	Apr	May	Jun	Jul	Aug	Sep	Oct	Nov	Dec
# Access	111	120	120	122	127	135	133	137	138	142	148	153
# Catheters	13	14	15	18	19	20	15	20	20	23	26	24
% Catheters	12%	12%	13%	15%	15%	15%	11%	15%	14%	16%	18%	16%



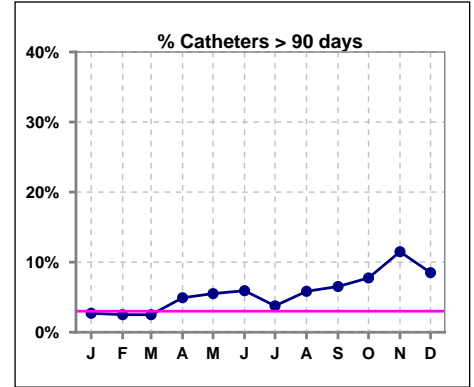
Methodology: a) All labs for 'Adequacy of Dialysis', 'Nutrition', 'Osteodystrophy', 'Anemia' and 'Diabetes' based on last value of month; b) BP's and #L processed are average of all values for month; c) Access data takes last access of month; d) Values for SGA and 'Infection Control' use most recent result.

IV. ACCESS - CONT.

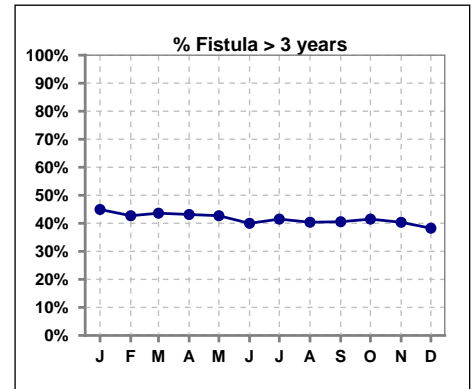
Catheters > 90 days

	Jan	Feb	Mar	Apr	May	Jun	Jul	Aug	Sep	Oct	Nov	Dec
# Access	111	120	120	122	127	135	133	137	138	142	148	153
# Catheters	3	3	3	6	7	8	5	8	9	11	17	13
% Catheters	3%	3%	3%	5%	6%	6%	4%	6%	7%	8%	11%	8%

Definition: Catheter in use on last treatment of the month



	Jan	Feb	Mar	Apr	May	Jun	Jul	Aug	Sep	Oct	Nov	Dec
# Fistula	89	96	94	95	96	105	106	104	106	106	109	115
# Fistula > 3 yrs	40	41	41	41	41	42	44	42	43	44	44	44
% Fistula > 3 yrs	45%	43%	44%	43%	43%	40%	42%	40%	41%	42%	40%	38%

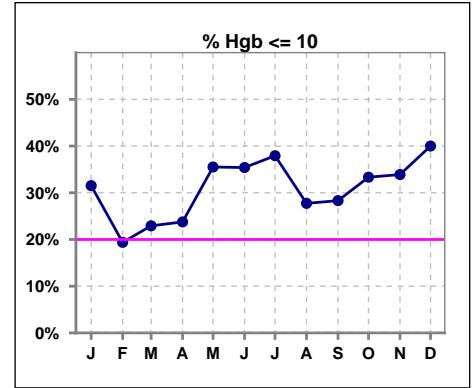


Methodology: a) All labs for 'Adequacy of Dialysis', 'Nutrition', 'Osteodystrophy', 'Anemia' and 'Diabetes' based on last value of month; b) BP's and #L processed are average of all values for month; c) Access data takes last access of month; d) Values for SGA and 'Infection Control' use most recent result.

V. ANEMIA

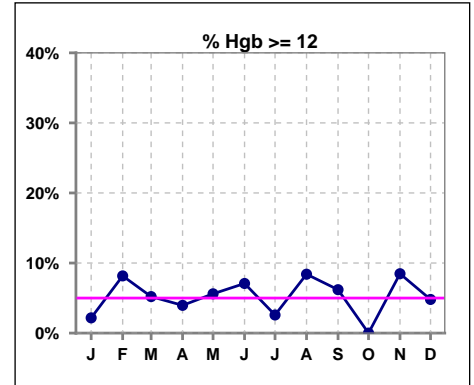
	Jan	Feb	Mar	Apr	May	Jun	Jul	Aug	Sep	Oct	Nov	Dec
# Hgb	92	98	96	101	107	113	116	119	113	111	118	125
# Hgb <= 10	29	19	22	24	38	40	44	33	32	37	40	50
Pop. Mean	10.4	10.7	10.7	10.6	10.4	10.4	10.2	10.6	10.5	10.2	10.5	10.2
Std. Deviation	1.0	1.2	1.0	1.2	1.3	1.2	1.2	1.3	1.4	1.0	1.4	1.2
% Hgb <= 10	32%	19%	23%	24%	36%	35%	38%	28%	28%	33%	34%	40%

Note: Excludes patients who received no ESA in month.



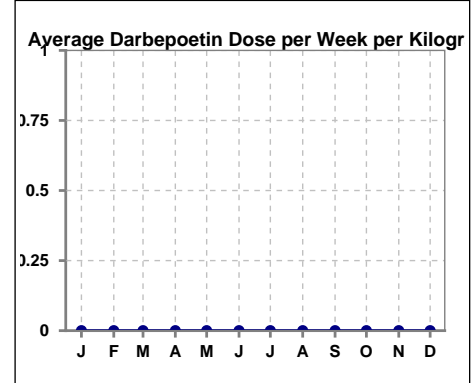
	Jan	Feb	Mar	Apr	May	Jun	Jul	Aug	Sep	Oct	Nov	Dec
# Hgb	92	98	96	101	107	113	116	119	113	111	118	125
# Hgb >= 12	2	8	5	4	6	8	3	10	7	0	10	6
Pop. Mean	10.4	10.7	10.7	10.6	10.4	10.4	10.2	10.6	10.5	10.2	10.5	10.2
Std. Deviation	1.0	1.2	1.0	1.2	1.3	1.2	1.2	1.3	1.4	1.0	1.4	1.2
% Hgb >= 12	2%	8%	5%	4%	6%	7%	3%	8%	6%	0%	8%	5%

Note: Excludes patients who received no ESA in month.



Average Darbepoetin Dose per Week per Kilogram

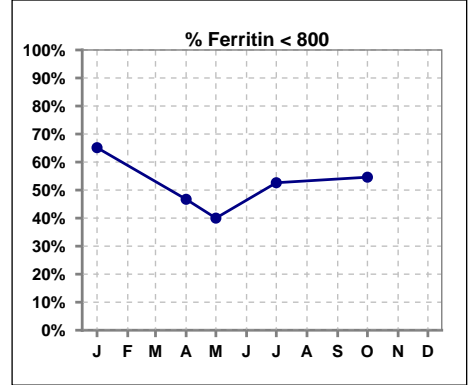
	Jan	Feb	Mar	Apr	May	Jun	Jul	Aug	Sep	Oct	Nov	Dec
# Average Darbepoetin	0	0	0	0	0	0	0	0	0	0	0	0



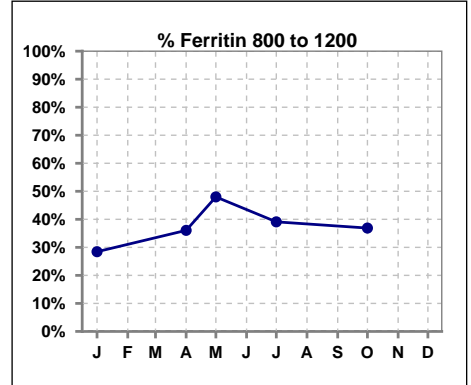
V. ANEMIA - CONT.

Iron Profile

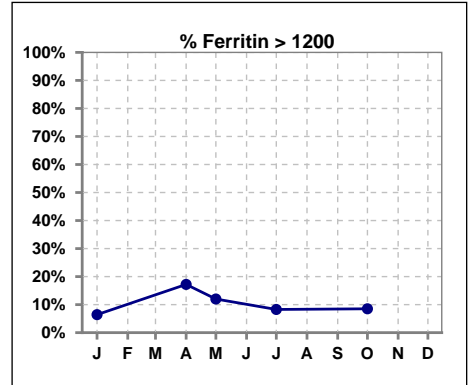
	Jan	Feb	Mar	Apr	May	Jun	Jul	Aug	Sep	Oct	Nov	Dec
# Ferritin	109			122	25		133			141		
# Ferritin < 800	71			57	10		70			77		
Pop. Mean	734			876	839		768			757		
Std. Deviation	344			369	402		339			349		
% Ferritin < 800	65%			47%	40%		53%			55%		



	Jan	Feb	Mar	Apr	May	Jun	Jul	Aug	Sep	Oct	Nov	Dec
# Ferritin	109			122	25		133			141		
# Ferritin 800 to 1200	31			44	12		52			52		
Pop. Mean	734			876	839		768			757		
Std. Deviation	344			369	402		339			349		
% Ferritin 800 to 1200	28%			36%	48%		39%			37%		



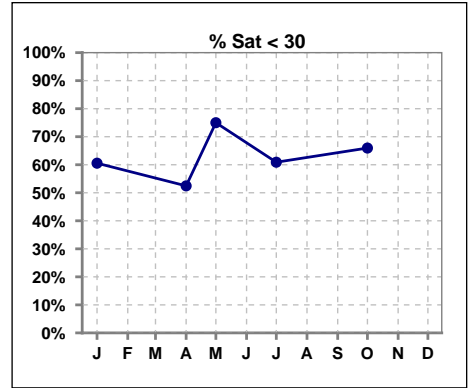
	Jan	Feb	Mar	Apr	May	Jun	Jul	Aug	Sep	Oct	Nov	Dec
# Ferritin	109			122	25		133			141		
# Ferritin > 1200	7			21	3		11			12		
Pop. Mean	734			876	839		768			757		
Std. Deviation	344			369	402		339			349		
% Ferritin > 1200	6%			17%	12%		8%			9%		



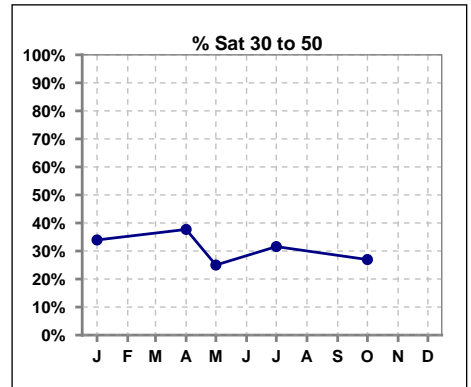
Methodology: a) All labs for 'Adequacy of Dialysis', 'Nutrition', 'Osteodystrophy', 'Anemia' and 'Diabetes' based on last value of month; b) BP's and #L processed are average of all values for month; c) Access data takes last access of month; d) Values for SGA and 'Infection Control' use most recent result.

V. ANEMIA - CONT.

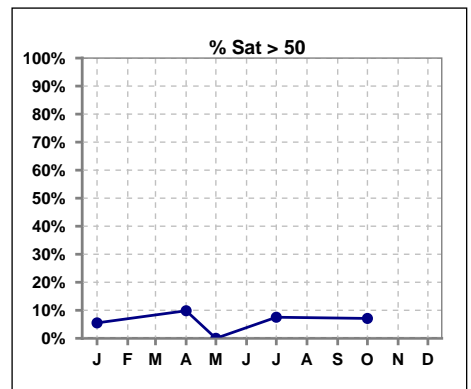
	Jan	Feb	Mar	Apr	May	Jun	Jul	Aug	Sep	Oct	Nov	Dec
# % Sat	109			122	24		133			141		
# % Sat < 30	66			64	18		81			93		
Pop. Mean	28			32	23		30			28		
Std. Deviation	13			17	8		14			14		
%% Sat < 30	61%			52%	75%		61%			66%		



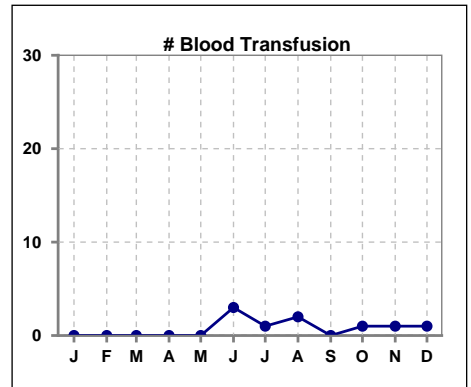
	Jan	Feb	Mar	Apr	May	Jun	Jul	Aug	Sep	Oct	Nov	Dec
# % Sat	109			122	24		133			141		
# % Sat 30 to 50	37			46	6		42			38		
Pop. Mean	28			32	23		30			28		
Std. Deviation	13			17	8		14			14		
%% Sat 30 to 50	34%			38%	25%		32%			27%		



	Jan	Feb	Mar	Apr	May	Jun	Jul	Aug	Sep	Oct	Nov	Dec
# % Sat	109			122	24		133			141		
# % Sat > 50	6			12	0		10			10		
Pop. Mean	28			32	23		30			28		
Std. Deviation	13			17	8		14			14		
%% Sat > 50	6%			10%	0%		8%			7%		



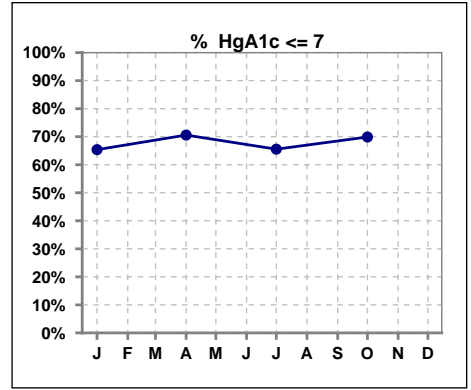
	Jan	Feb	Mar	Apr	May	Jun	Jul	Aug	Sep	Oct	Nov	Dec
# Patient	111	121	120	123	127	135	133	137	139	146	148	153
# Blood Transfusion	0	0	0	0	0	3	1	2	0	1	1	1



Methodology: a) All labs for 'Adequacy of Dialysis', 'Nutrition', 'Osteodystrophy', 'Anemia' and 'Diabetes' based on last value of month; b) BP's and #L processed are average of all values for month; c) Access data takes last access of month; d) Values for SGA and 'Infection Control' use most recent result.

VI. Diabetes

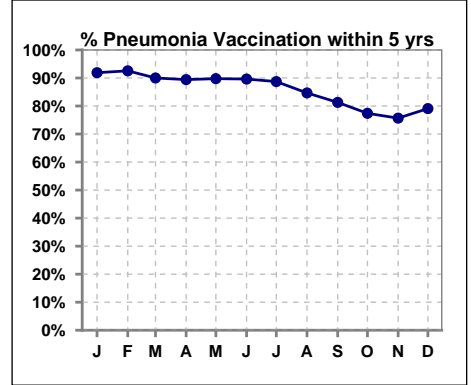
	Jan	Feb	Mar	Apr	May	Jun	Jul	Aug	Sep	Oct	Nov	Dec
# HgA1c	78			85			90			93		
# HgA1c <= 7	51			60			59			65		
Pop. Mean	6.9			6.8			6.7			6.6		
Std. Deviation	1.58			1.58			1.59			1.43		
% HgA1c <= 7	65%			71%			66%			70%		



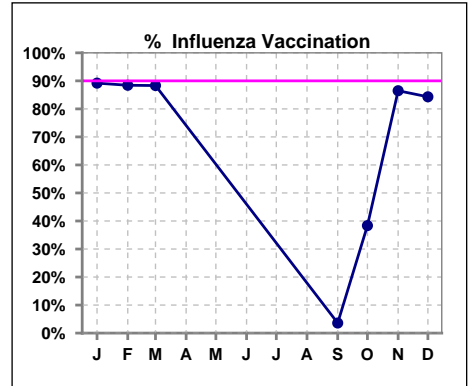
VII. Infection Control

Pneumonia vaccination within the past five years

	Jan	Feb	Mar	Apr	May	Jun	Jul	Aug	Sep	Oct	Nov	Dec
# Patient	111	121	120	123	127	135	133	137	139	146	148	153
# Pneumonia	102	112	108	110	114	121	118	116	113	113	112	121
% Pneumonia	92%	93%	90%	89%	90%	90%	89%	85%	81%	77%	76%	79%



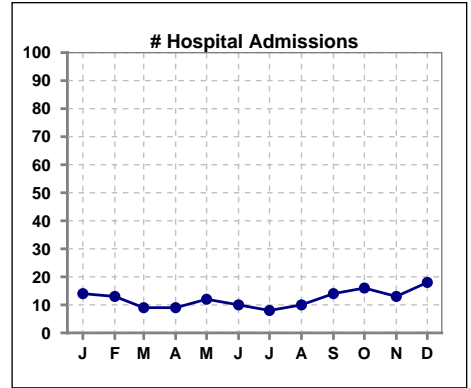
	Jan	Feb	Mar	Apr	May	Jun	Jul	Aug	Sep	Oct	Nov	Dec
# Patient	111	121	120						139	146	148	153
# Influenza	99	107	106						5	56	128	129
% Influenza	89%	88%	88%						4%	38%	86%	84%



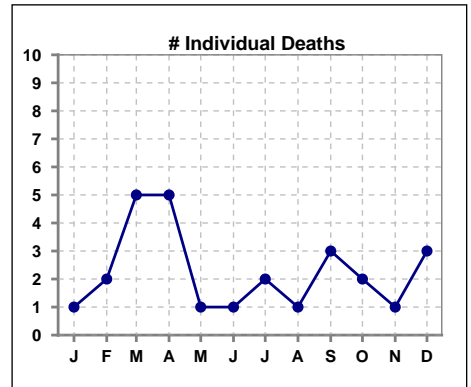
Methodology: a) All labs for 'Adequacy of Dialysis', 'Nutrition', 'Osteodystrophy', 'Anemia' and 'Diabetes' based on last value of month; b) BP's and #L processed are average of all values for month; c) Access data takes last access of month; d) Values for SGA and 'Infection Control' use most recent result.

VIII. Outcome measures

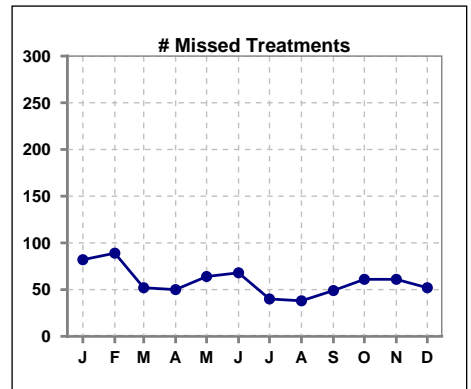
	Jan	Feb	Mar	Apr	May	Jun	Jul	Aug	Sep	Oct	Nov	Dec
# Patient	111	121	120	123	127	135	133	137	139	146	148	153
# Hospital Admissions	14	13	9	9	12	10	8	10	14	16	13	18



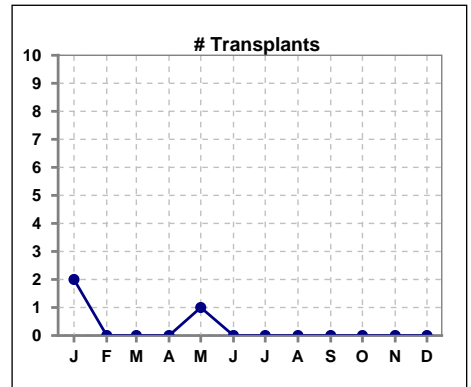
	Jan	Feb	Mar	Apr	May	Jun	Jul	Aug	Sep	Oct	Nov	Dec
# Patient	111	121	120	123	127	135	133	137	139	146	148	153
# Individual Deaths	1	2	5	5	1	1	2	1	3	2	1	3



	Jan	Feb	Mar	Apr	May	Jun	Jul	Aug	Sep	Oct	Nov	Dec
# Patient	111	121	120	123	127	135	133	137	139	146	148	153
# Missed Treatments	82	89	52	50	64	68	40	38	49	61	61	52



	Jan	Feb	Mar	Apr	May	Jun	Jul	Aug	Sep	Oct	Nov	Dec
# Patient	111	121	120	123	127	135	133	137	139	146	148	153
# Transplants	2	0	0	0	1	0	0	0	0	0	0	0



Methodology: a) All labs for 'Adequacy of Dialysis', 'Nutrition', 'Osteodystrophy', 'Anemia' and 'Diabetes' based on last value of month; b) BP's and #L processed are average of all values for month; c) Access data takes last access of month; d) Values for SGA and 'Infection Control' use most recent result.