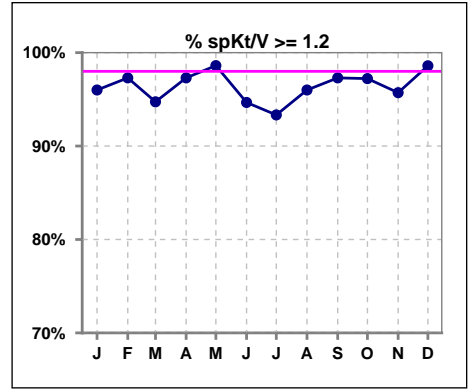
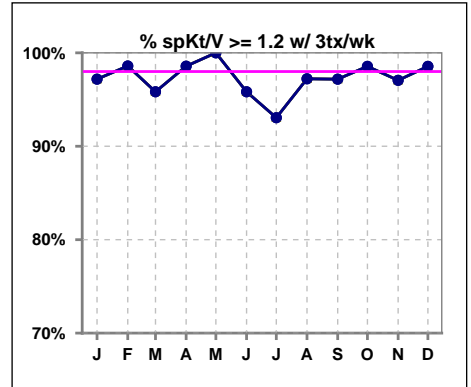


I. ADEQUACY OF DIALYSIS

	Jan	Feb	Mar	Apr	May	Jun	Jul	Aug	Sep	Oct	Nov	Dec
# spKt/V	75	74	76	74	72	75	75	75	74	72	70	71
# spKt/V >= 1.2	72	72	72	72	71	71	70	72	72	70	67	70
Pop. Mean	1.61	1.57	1.56	1.60	1.60	1.61	1.60	1.62	1.62	1.66	1.69	1.61
Std. Deviation	0.28	0.27	0.29	0.31	0.27	0.30	0.30	0.28	0.29	0.28	0.45	0.27
% spKt/V >= 1.2	96%	97%	95%	97%	99%	95%	93%	96%	97%	97%	96%	99%

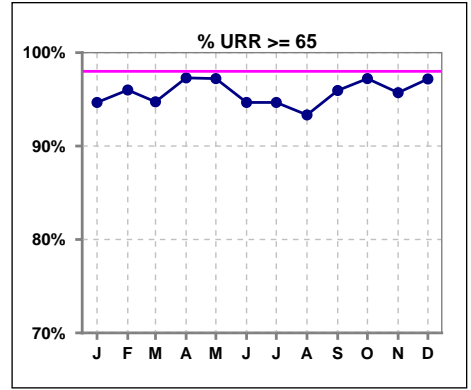


	Jan	Feb	Mar	Apr	May	Jun	Jul	Aug	Sep	Oct	Nov	Dec
# spKt/V w/ 3tx/wk	71	71	72	70	69	72	72	72	71	69	68	69
# spKt/V >= 1.2 w/3tx/wk	69	70	69	69	69	69	67	70	69	68	66	68
Pop. Mean	1.59	1.57	1.55	1.58	1.60	1.62	1.60	1.62	1.62	1.66	1.71	1.62
Std. Deviation	0.25	0.24	0.27	0.27	0.25	0.28	0.29	0.26	0.29	0.27	0.43	0.27
% >= 1.2 w/3tx/wk	97%	99%	96%	99%	100%	96%	93%	97%	97%	99%	97%	99%

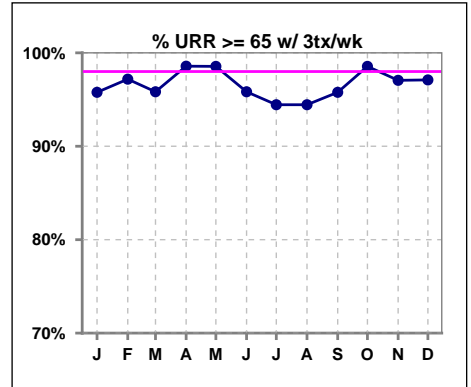


I. ADEQUACY OF DIALYSIS - CONT.

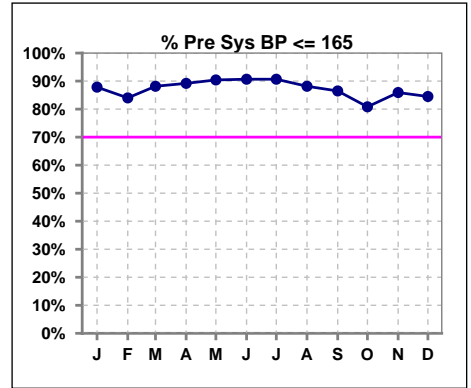
	Jan	Feb	Mar	Apr	May	Jun	Jul	Aug	Sep	Oct	Nov	Dec
# URR	75	75	76	74	72	75	75	75	74	72	70	71
# URR >= 65	71	72	72	72	70	71	71	70	71	70	67	69
Pop. Mean	75	74	74	74	75	75	74	75	75	76	75	75
Std. Deviation	5.42	5.84	6.87	6.33	5.31	6.47	6.35	6.17	5.88	5.43	7.69	5.41
% URR >= 65	95%	96%	95%	97%	97%	95%	95%	93%	96%	97%	96%	97%



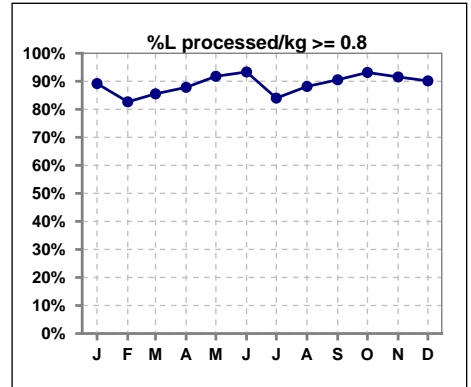
	Jan	Feb	Mar	Apr	May	Jun	Jul	Aug	Sep	Oct	Nov	Dec
# URR w/ 3tx/wk	71	71	72	70	69	72	72	72	71	69	68	69
# URR>=65 w/ 3tx/wk	68	69	69	69	68	69	68	68	68	68	66	67
Pop. Mean	74	74	74	74	75	75	74	75	75	76	76	75
Std. Deviation	4.96	4.91	6.69	5.82	4.82	5.64	6.24	5.88	5.76	4.95	6.72	5.38
% URR>=65 w/ 3tx/wk	96%	97%	96%	99%	99%	96%	94%	94%	96%	99%	97%	97%



	Jan	Feb	Mar	Apr	May	Jun	Jul	Aug	Sep	Oct	Nov	Dec
# Pre Sys BP	74	75	76	74	73	75	75	76	74	73	71	71
# Pre Sys BP <= 165	65	63	67	66	66	68	69	67	64	62	61	60
Pop. Mean	144	146	145	145	143	142	141	141	143	145	143	144
Std. Deviation	17.2	19.6	18.0	17.8	18.9	20.4	19.8	20.8	21.6	22.6	22.2	22.3
% Pre Sys BP <=165	88%	84%	88%	89%	90%	91%	91%	88%	86%	81%	86%	85%



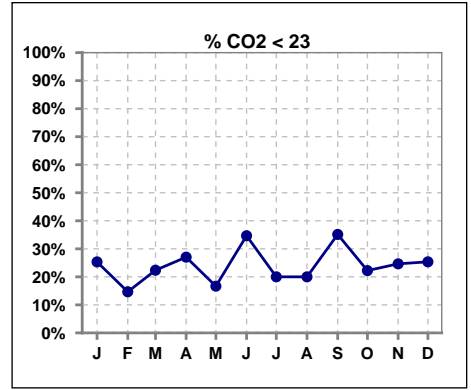
	Jan	Feb	Mar	Apr	May	Jun	Jul	Aug	Sep	Oct	Nov	Dec
# L processed/kg	74	75	76	74	73	75	75	76	74	73	71	71
# L processed/kg>=0.8	66	62	65	65	67	70	63	67	67	68	65	64
Pop. Mean	1	1	1	1	1	1	1	1	1	1	1	1
Std. Deviation	0.3	0.2	0.2	0.2	0.2	0.2	0.3	0.2	0.2	0.4	1.4	0.4
% L processed/kg>=0.8	89%	83%	86%	88%	92%	93%	84%	88%	91%	93%	92%	90%



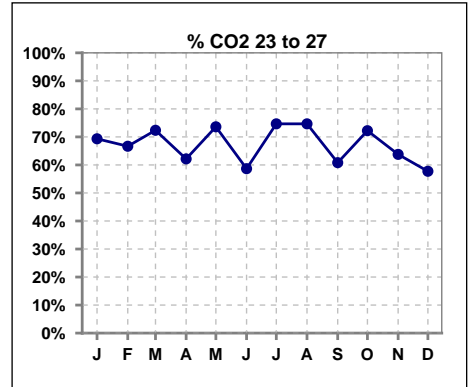
Methodology: a) All labs for 'Adequacy of Dialysis', 'Nutrition', 'Osteodystrophy', 'Anemia' and 'Diabetes' based on last value of month; b) BP's and #L processed are average of all values for month; c) Access data takes last access of month; d) Values for SGA and 'Infection Control' use most recent result.

I. ADEQUACY OF DIALYSIS - CONT.

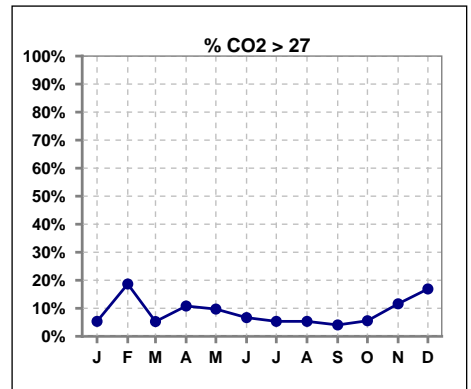
	Jan	Feb	Mar	Apr	May	Jun	Jul	Aug	Sep	Oct	Nov	Dec
# CO2	75	75	76	74	72	75	75	75	74	72	69	71
# CO2 < 23	19	11	17	20	12	26	15	15	26	16	17	18
Pop. Mean	24	25	24	24	25	23	24	24	23	24	24	24
Std. Deviation	2.52	3.45	2.42	2.94	2.31	3.25	2.42	2.33	2.87	2.45	2.43	3.29
% CO2 < 23	25%	15%	22%	27%	17%	35%	20%	20%	35%	22%	25%	25%



	Jan	Feb	Mar	Apr	May	Jun	Jul	Aug	Sep	Oct	Nov	Dec
# CO2	75	75	76	74	72	75	75	75	74	72	69	71
# CO2 23 to 27	52	50	55	46	53	44	56	56	45	52	44	41
Pop. Mean	24	25	24	24	25	23	24	24	23	24	24	24
Std. Deviation	2.52	3.45	2.42	2.94	2.31	3.25	2.42	2.33	2.87	2.45	2.43	3.29
% CO2 23 to 27	69%	67%	72%	62%	74%	59%	75%	75%	61%	72%	64%	58%



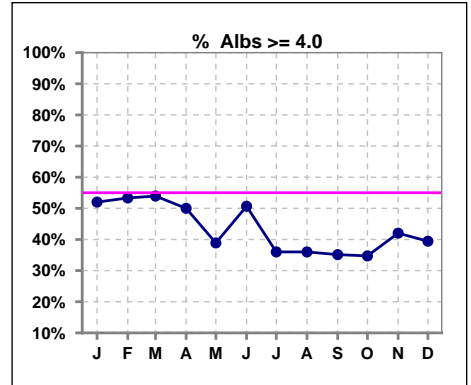
	Jan	Feb	Mar	Apr	May	Jun	Jul	Aug	Sep	Oct	Nov	Dec
# CO2	75	75	76	74	72	75	75	75	74	72	69	71
# CO2 > 27	4	14	4	8	7	5	4	4	3	4	8	12
Pop. Mean	24	25	24	24	25	23	24	24	23	24	24	24
Std. Deviation	2.52	3.45	2.42	2.94	2.31	3.25	2.42	2.33	2.87	2.45	2.43	3.29
% CO2 > 27	5%	19%	5%	11%	10%	7%	5%	5%	4%	6%	12%	17%



*Albumin values use BCG method - as of July 2001

II. NUTRITION

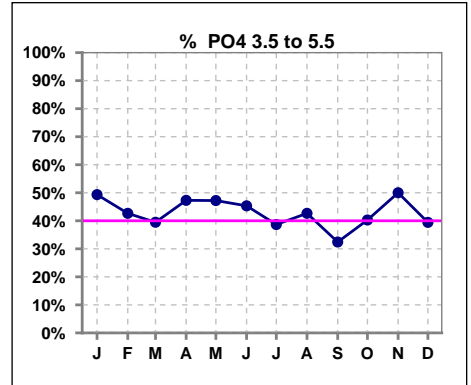
	Jan	Feb	Mar	Apr	May	Jun	Jul	Aug	Sep	Oct	Nov	Dec
# Albumin	75	75	76	74	72	75	75	75	74	72	69	71
# Albumin >= 4.0	39	40	41	37	28	38	27	27	26	25	29	28
Pop. Mean	3.9	3.9	3.9	3.9	3.8	3.8	3.8	3.8	3.8	3.8	3.8	3.8
Std. Deviation	0.38	0.45	0.44	0.46	0.41	0.42	0.42	0.40	0.39	0.42	0.45	0.44
% Alb >= 4.0	52%	53%	54%	50%	39%	51%	36%	36%	35%	35%	42%	39%



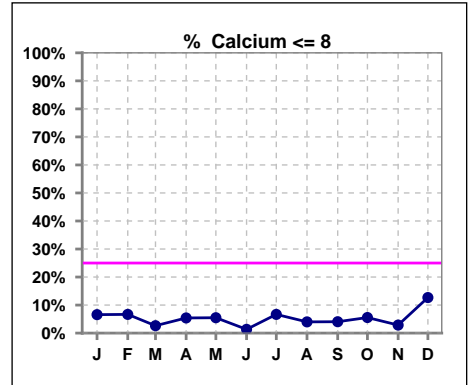
Lab methodology for PTH changed January 2012

III. OSTEODYSTROPHY

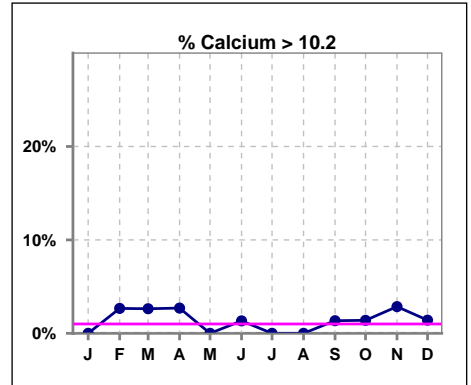
	Jan	Feb	Mar	Apr	May	Jun	Jul	Aug	Sep	Oct	Nov	Dec
# PO4	75	75	76	74	72	75	75	75	74	72	70	71
# PO4 3.5 to 5.5	37	32	30	35	34	34	29	32	24	29	35	28
Pop. Mean	5.7	5.7	5.9	5.8	5.7	5.8	6.1	5.9	6.1	5.9	5.8	6.1
Std. Deviation	1.63	1.61	1.89	1.81	1.61	1.75	1.90	1.83	1.93	1.66	1.64	1.68
% PO4 3.5 to 5.5	49%	43%	39%	47%	47%	45%	39%	43%	32%	40%	50%	39%



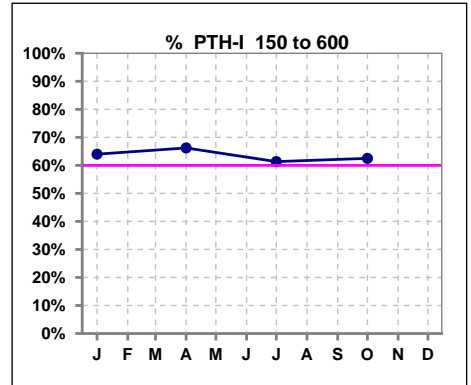
	Jan	Feb	Mar	Apr	May	Jun	Jul	Aug	Sep	Oct	Nov	Dec
# Calcium	76	75	76	74	73	75	75	75	74	72	70	71
# Calcium <= 8	5	5	2	4	4	1	5	3	3	4	2	9
Pop. Mean	9.1	9.2	9.2	9.1	9.2	9.2	9.2	9.2	9.2	9.2	9.2	9.2
Std. Deviation	0.62	0.73	0.67	0.65	0.63	0.58	0.67	0.68	0.66	0.65	0.63	0.73
% Calcium <= 8	7%	7%	3%	5%	5%	1%	7%	4%	4%	6%	3%	13%



	Jan	Feb	Mar	Apr	May	Jun	Jul	Aug	Sep	Oct	Nov	Dec
# Calcium	76	75	76	74	73	75	75	75	74	72	70	71
# Calcium > 10.2	0	2	2	2	0	1	0	0	1	1	2	1
Pop. Mean	9.1	9.2	9.2	9.1	9.2	9.2	9.2	9.2	9.2	9.2	9.2	9.2
Std. Deviation	0.62	0.73	0.67	0.65	0.63	0.58	0.67	0.68	0.66	0.65	0.63	0.73
% Calcium > 10.2	0%	3%	3%	3%	0%	1%	0%	0%	1%	1%	3%	1%



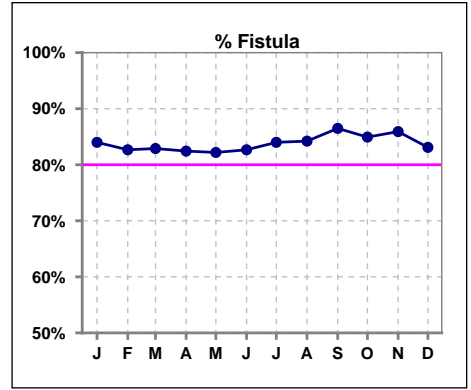
	Jan	Feb	Mar	Apr	May	Jun	Jul	Aug	Sep	Oct	Nov	Dec
# PTH-I	75			74			75			72		
# PTH-I 150 to 600	48			49			46			45		
Pop. Mean	452			488			479			467		
Std. Deviation	401			482			492			388		
% PTH-I 150 to 600	64%			66%			61%			63%		



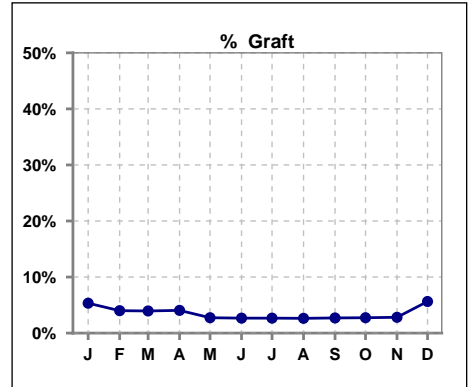
Methodology: a) All labs for 'Adequacy of Dialysis', 'Nutrition', 'Osteodystrophy', 'Anemia' and 'Diabetes' based on last value of month; b) BP's and #L processed are average of all values for month; c) Access data takes last access of month; d) Values for SGA and 'Infection Control' use most recent result.

IV. ACCESS

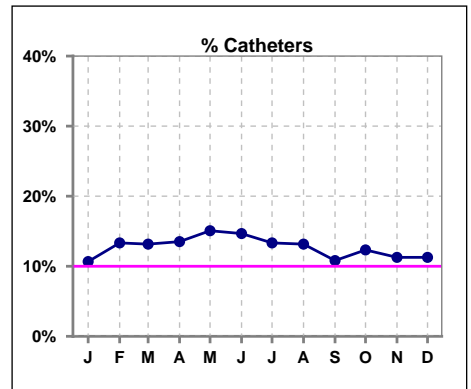
	Jan	Feb	Mar	Apr	May	Jun	Jul	Aug	Sep	Oct	Nov	Dec
# Access	75	75	76	74	73	75	75	76	74	73	71	71
# Fistula	63	62	63	61	60	62	63	64	64	62	61	59
% Fistula	84%	83%	83%	82%	82%	83%	84%	84%	86%	85%	86%	83%



	Jan	Feb	Mar	Apr	May	Jun	Jul	Aug	Sep	Oct	Nov	Dec
# Access	75	75	76	74	73	75	75	76	74	73	71	71
# Graft	4	3	3	3	2	2	2	2	2	2	2	4
% Graft	5%	4%	4%	4%	3%	3%	3%	3%	3%	3%	3%	6%



	Jan	Feb	Mar	Apr	May	Jun	Jul	Aug	Sep	Oct	Nov	Dec
# Access	75	75	76	74	73	75	75	76	74	73	71	71
# Catheters	8	10	10	10	11	11	10	10	8	9	8	8
% Catheters	11%	13%	13%	14%	15%	15%	13%	13%	11%	12%	11%	11%



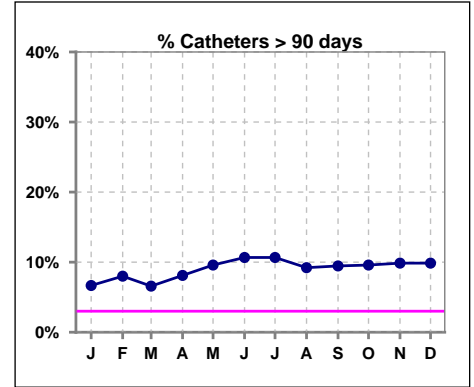
Methodology: a) All labs for 'Adequacy of Dialysis', 'Nutrition', 'Osteodystrophy', 'Anemia' and 'Diabetes' based on last value of month; b) BP's and #L processed are average of all values for month; c) Access data takes last access of month; d) Values for SGA and 'Infection Control' use most recent result.

IV. ACCESS - CONT.

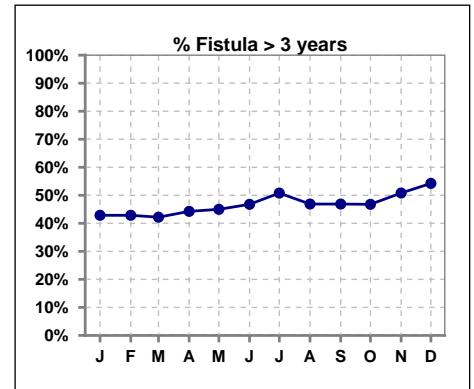
Catheters > 90 days

	Jan	Feb	Mar	Apr	May	Jun	Jul	Aug	Sep	Oct	Nov	Dec
# Access	75	75	76	74	73	75	75	76	74	73	71	71
# Catheters	5	6	5	6	7	8	8	7	7	7	7	7
% Catheters	7%	8%	7%	8%	10%	11%	11%	9%	9%	10%	10%	10%

Definition: Catheter in use on last treatment of the month



	Jan	Feb	Mar	Apr	May	Jun	Jul	Aug	Sep	Oct	Nov	Dec
# Fistula	63	63	64	61	60	62	63	64	64	62	61	59
# Fistula > 3 yrs	27	27	27	27	27	29	32	30	30	29	31	32
% Fistula > 3 yrs	43%	43%	42%	44%	45%	47%	51%	47%	47%	47%	51%	54%

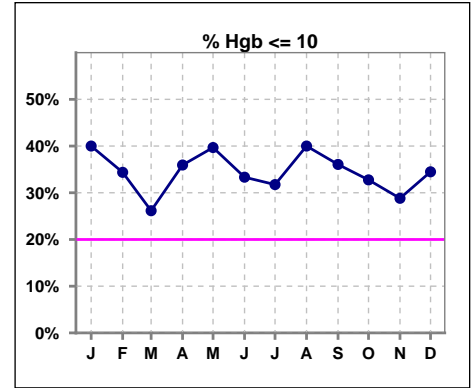


Methodology: a) All labs for 'Adequacy of Dialysis', 'Nutrition', 'Osteodystrophy', 'Anemia' and 'Diabetes' based on last value of month; b) BP's and #L processed are average of all values for month; c) Access data takes last access of month; d) Values for SGA and 'Infection Control' use most recent result.

V. ANEMIA

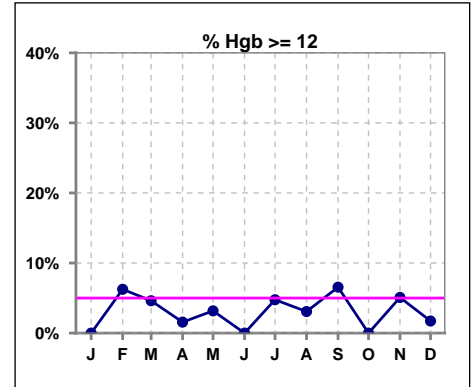
	Jan	Feb	Mar	Apr	May	Jun	Jul	Aug	Sep	Oct	Nov	Dec
# Hgb	65	64	65	64	63	63	63	65	61	58	59	58
# Hgb <= 10	26	22	17	23	25	21	20	26	22	19	17	20
Pop. Mean	10.1	10.4	10.5	10.4	10.4	10.2	10.3	10.1	10.3	10.2	10.5	10.3
Std. Deviation	1.1	1.2	1.1	1.1	1.2	1.1	1.2	1.2	1.2	1.1	1.2	1.2
% Hgb <= 10	40%	34%	26%	36%	40%	33%	32%	40%	36%	33%	29%	34%

Note: Excludes patients who received no ESA in month.



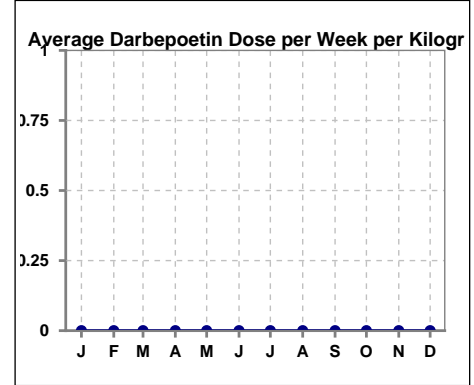
	Jan	Feb	Mar	Apr	May	Jun	Jul	Aug	Sep	Oct	Nov	Dec
# Hgb	65	64	65	64	63	63	63	65	61	58	59	58
# Hgb >= 12	0	4	3	1	2	0	3	2	4	0	3	1
Pop. Mean	10.1	10.4	10.5	10.4	10.4	10.2	10.3	10.1	10.3	10.2	10.5	10.3
Std. Deviation	1.1	1.2	1.1	1.1	1.2	1.1	1.2	1.2	1.2	1.1	1.2	1.2
% Hgb >= 12	0%	6%	5%	2%	3%	0%	5%	3%	7%	0%	5%	2%

Note: Excludes patients who received no ESA in month.



Average Darbepoetin Dose per Week per Kilogram

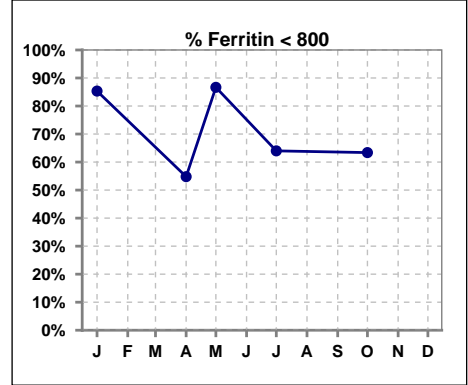
	Jan	Feb	Mar	Apr	May	Jun	Jul	Aug	Sep	Oct	Nov	Dec
# Average Darbepoetin	0	0	0	0	0	0	0	0	0	0	0	0



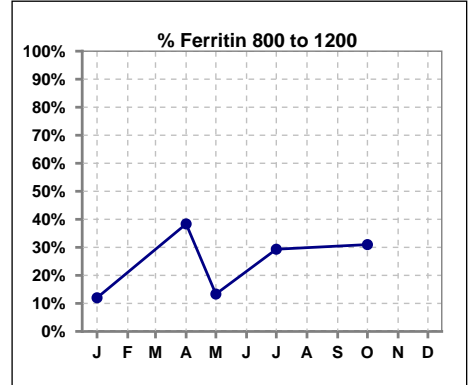
V. ANEMIA - CONT.

Iron Profile

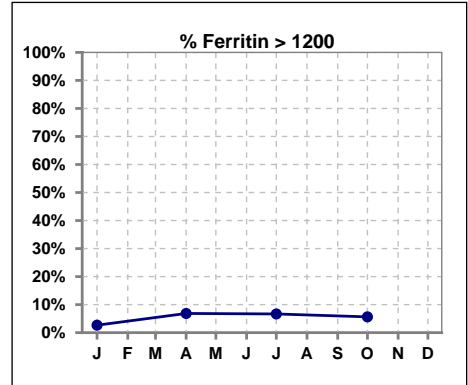
	Jan	Feb	Mar	Apr	May	Jun	Jul	Aug	Sep	Oct	Nov	Dec
# Ferritin	75			73	15		75			71		
# Ferritin < 800	64			40	13		48			45		
Pop. Mean	584			742	548		706			696		
Std. Deviation	267			330	260		344			335		
% Ferritin < 800	85%			55%	87%		64%			63%		



	Jan	Feb	Mar	Apr	May	Jun	Jul	Aug	Sep	Oct	Nov	Dec
# Ferritin	75			73	15		75			71		
# Ferritin 800 to 1200	9			28	2		22			22		
Pop. Mean	584			742	548		706			696		
Std. Deviation	267			330	260		344			335		
% Ferritin 800 to 1200	12%			38%	13%		29%			31%		



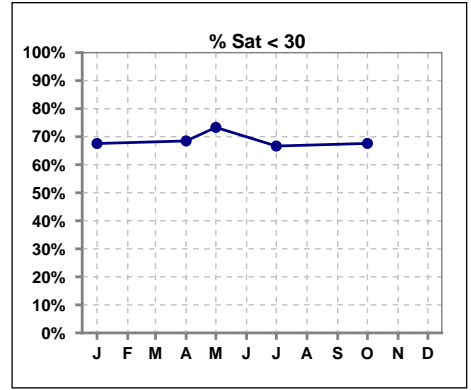
	Jan	Feb	Mar	Apr	May	Jun	Jul	Aug	Sep	Oct	Nov	Dec
# Ferritin	75			73	15		75			71		
# Ferritin > 1200	2			5			5			4		
Pop. Mean	584			742	548		706			696		
Std. Deviation	267			330	260		344			335		
% Ferritin > 1200	3%			7%			7%			6%		



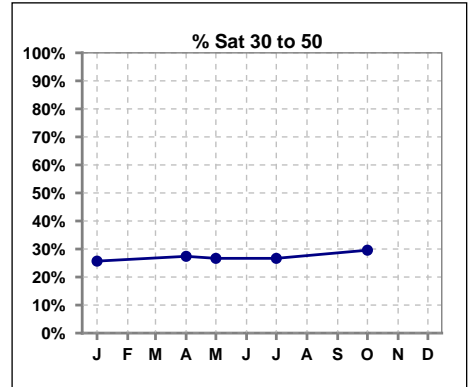
Methodology: a) All labs for 'Adequacy of Dialysis', 'Nutrition', 'Osteodystrophy', 'Anemia' and 'Diabetes' based on last value of month; b) BP's and #L processed are average of all values for month; c) Access data takes last access of month; d) Values for SGA and 'Infection Control' use most recent result.

V. ANEMIA - CONT.

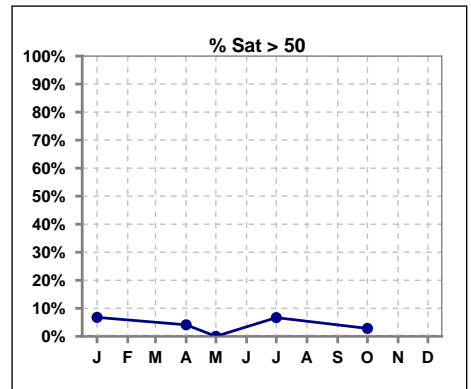
	Jan	Feb	Mar	Apr	May	Jun	Jul	Aug	Sep	Oct	Nov	Dec
# % Sat	74			73	15		75			71		
# % Sat < 30	50			50	11		50			48		
Pop. Mean	28			26	23		27			26		
Std. Deviation	17			10	8		15			12		
% % Sat < 30	68%			68%	73%		67%			68%		



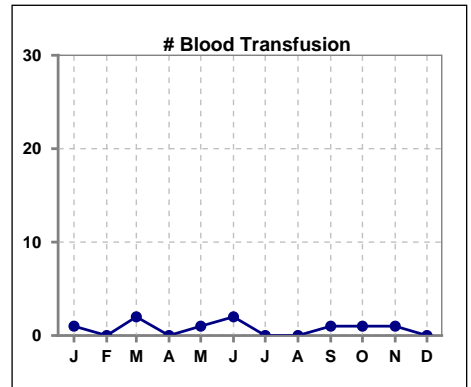
	Jan	Feb	Mar	Apr	May	Jun	Jul	Aug	Sep	Oct	Nov	Dec
# % Sat	74			73	15		75			71		
# % Sat 30 to 50	19			20	4		20			21		
Pop. Mean	28			26	23		27			26		
Std. Deviation	17			10	8		15			12		
% % Sat 30 to 50	26%			27%	27%		27%			30%		



	Jan	Feb	Mar	Apr	May	Jun	Jul	Aug	Sep	Oct	Nov	Dec
# % Sat	74			73	15		75			71		
# % Sat > 50	5			3	0		5			2		
Pop. Mean	28			26	23		27			26		
Std. Deviation	17			10	8		15			12		
% % Sat > 50	7%			4%	0%		7%			3%		



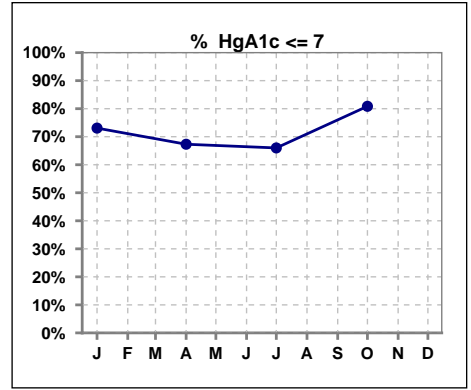
	Jan	Feb	Mar	Apr	May	Jun	Jul	Aug	Sep	Oct	Nov	Dec
# Patient	75	75	77	74	73	75	75	76	75	78	71	71
# Blood Transfusion	1	0	2	0	1	2	0	0	1	1	1	0



Methodology: a) All labs for 'Adequacy of Dialysis', 'Nutrition', 'Osteodystrophy', 'Anemia' and 'Diabetes' based on last value of month; b) BP's and #L processed are average of all values for month; c) Access data takes last access of month; d) Values for SGA and 'Infection Control' use most recent result.

VI. Diabetes

	Jan	Feb	Mar	Apr	May	Jun	Jul	Aug	Sep	Oct	Nov	Dec
# HgA1c	52			52			50			47		
# HgA1c <= 7	38			35			33			38		
Pop. Mean	6.6			6.7			6.7			6.4		
Std. Deviation	1.83			1.76			1.51			1.24		
% HgA1c <= 7	73%			67%			66%			81%		

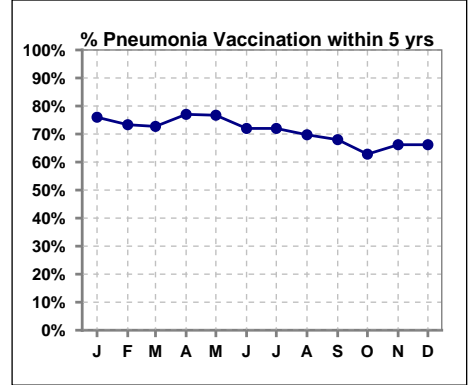


Methodology: a) All labs for 'Adequacy of Dialysis', 'Nutrition', 'Osteodystrophy', 'Anemia' and 'Diabetes' based on last value of month; b) BP's and #L processed are average of all values for month; c) Access data takes last access of month; d) Values for SGA and 'Infection Control' use most recent result.

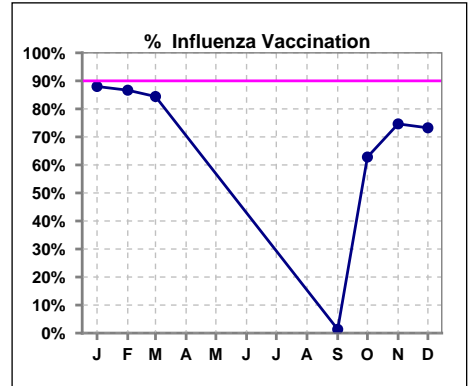
VII. Infection Control

Pneumonia vaccination within the past five years

	Jan	Feb	Mar	Apr	May	Jun	Jul	Aug	Sep	Oct	Nov	Dec
# Patient	75	75	77	74	73	75	75	76	75	78	71	71
# Pneumonia	57	55	56	57	56	54	54	53	51	49	47	47
% Pneumonia	76%	73%	73%	77%	77%	72%	72%	70%	68%	63%	66%	66%



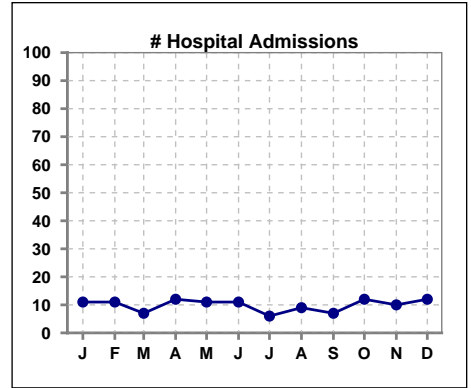
	Jan	Feb	Mar	Apr	May	Jun	Jul	Aug	Sep	Oct	Nov	Dec
# Patient	75	75	77						75	78	71	71
# Influenza	66	65	65						1	49	53	52
% Influenza	88%	87%	84%						1%	63%	75%	73%



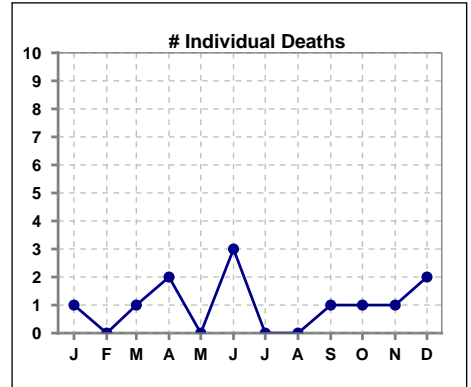
Methodology: a) All labs for 'Adequacy of Dialysis', 'Nutrition', 'Osteodystrophy', 'Anemia' and 'Diabetes' based on last value of month; b) BP's and #L processed are average of all values for month; c) Access data takes last access of month; d) Values for SGA and 'Infection Control' use most recent result.

VIII. Outcome measures

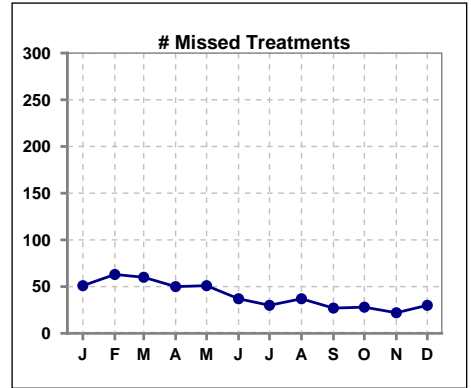
	Jan	Feb	Mar	Apr	May	Jun	Jul	Aug	Sep	Oct	Nov	Dec
# Patient	75	75	77	74	73	75	75	76	75	78	71	71
# Hospital Admissions	11	11	7	12	11	11	6	9	7	12	10	12



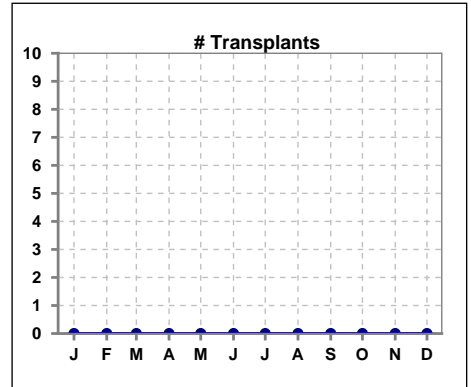
	Jan	Feb	Mar	Apr	May	Jun	Jul	Aug	Sep	Oct	Nov	Dec
# Patient	75	75	77	74	73	75	75	76	75	78	71	71
# Individual Deaths	1	0	1	2	0	3	0	0	1	1	1	2



	Jan	Feb	Mar	Apr	May	Jun	Jul	Aug	Sep	Oct	Nov	Dec
# Patient	75	75	77	74	73	75	75	76	75	78	71	71
# Missed Treatments	51	63	60	50	51	37	30	37	27	28	22	30



	Jan	Feb	Mar	Apr	May	Jun	Jul	Aug	Sep	Oct	Nov	Dec
# Patient	75	75	77	74	73	75	75	76	75	78	71	71
# Transplants	0	0	0	0	0	0	0	0	0	0	0	0



Methodology: a) All labs for 'Adequacy of Dialysis', 'Nutrition', 'Osteodystrophy', 'Anemia' and 'Diabetes' based on last value of month; b) BP's and #L processed are average of all values for month; c) Access data takes last access of month; d) Values for SGA and 'Infection Control' use most recent result.