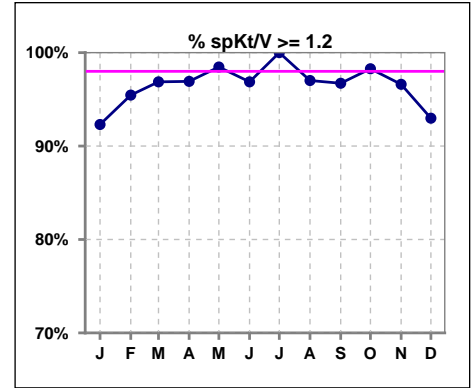
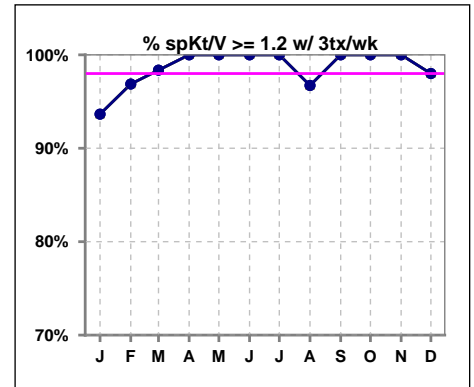


**I. ADEQUACY OF DIALYSIS**

	Jan	Feb	Mar	Apr	May	Jun	Jul	Aug	Sep	Oct	Nov	Dec
# spKt/V	65	66	64	65	65	64	65	67	61	58	59	57
# spKt/V >= 1.2	60	63	62	63	64	62	65	65	59	57	57	53
Pop. Mean	1.58	1.63	1.62	1.63	1.59	1.58	1.84	1.92	1.72	1.65	1.66	1.66
Std. Deviation	0.28	0.29	0.30	0.30	0.29	0.29	1.29	1.55	0.98	0.31	0.30	0.32
% spKt/V >= 1.2	92%	95%	97%	97%	98%	97%	100%	97%	97%	98%	97%	93%



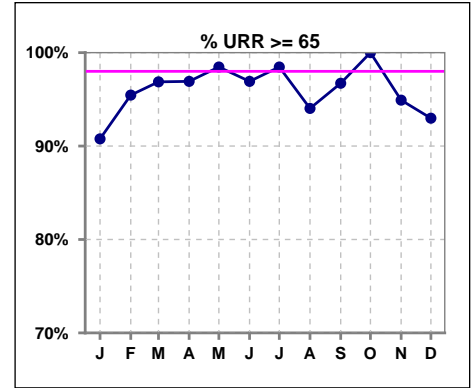
	Jan	Feb	Mar	Apr	May	Jun	Jul	Aug	Sep	Oct	Nov	Dec
# spKt/V w/ 3tx/wk	63	64	61	59	59	60	58	61	54	52	51	50
# spKt/V >= 1.2 w/3tx/wk	59	62	60	59	59	60	58	59	54	52	51	49
Pop. Mean	1.58	1.63	1.62	1.64	1.59	1.58	1.62	1.71	1.63	1.66	1.70	1.70
Std. Deviation	0.27	0.28	0.29	0.28	0.28	0.26	0.28	0.98	0.30	0.32	0.29	0.31
% >= 1.2 w/3tx/wk	94%	97%	98%	100%	100%	100%	100%	97%	100%	100%	100%	98%



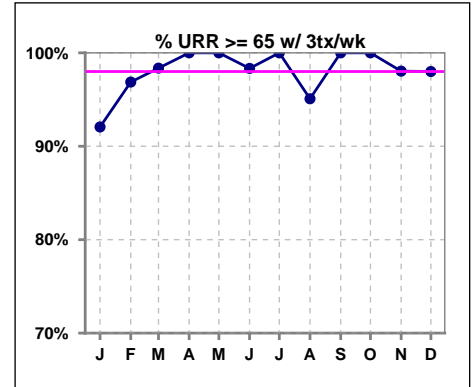
Methodology: a) All labs for 'Adequacy of Dialysis', 'Nutrition', 'Osteodystrophy', 'Anemia' and 'Diabetes' based on last value of month; b) BP's and #L processed are average of all values for month; c) Access data takes last access of month; d) Values for SGA and 'Infection Control' use most recent result.

**I. ADEQUACY OF DIALYSIS - CONT.**

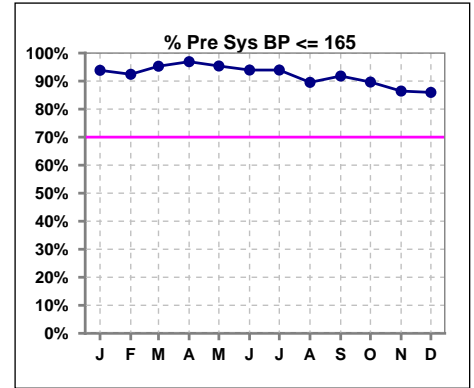
	Jan	Feb	Mar	Apr	May	Jun	Jul	Aug	Sep	Oct	Nov	Dec
# URR	65	66	64	65	65	65	65	67	61	58	59	57
# URR >= 65	59	63	62	63	64	63	64	63	59	58	56	53
Pop. Mean	74	75	75	75	74	74	74	74	74	75	75	76
Std. Deviation	6.11	5.69	5.37	5.89	5.66	5.92	5.83	7.07	6.17	5.88	5.67	6.42
% URR >= 65	91%	95%	97%	97%	98%	97%	98%	94%	97%	100%	95%	93%



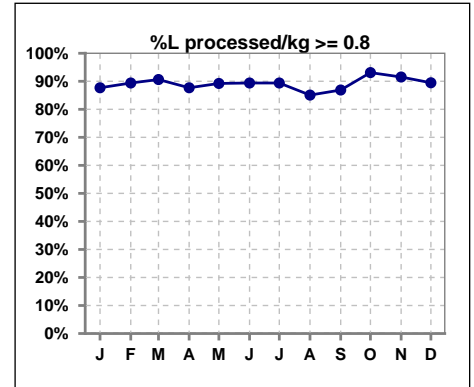
	Jan	Feb	Mar	Apr	May	Jun	Jul	Aug	Sep	Oct	Nov	Dec
# URR w/ 3tx/wk	63	64	61	59	59	60	58	61	54	52	51	50
# URR>=65 w/ 3tx/wk	58	62	60	59	59	59	58	58	54	52	50	49
Pop. Mean	74	76	75	75	74	74	75	74	75	76	76	76
Std. Deviation	5.83	5.42	5.13	5.13	5.30	5.39	5.27	6.96	5.39	5.77	5.13	5.47
% URR>=65 w/ 3tx/wk	92%	97%	98%	100%	100%	98%	100%	95%	100%	100%	98%	98%



	Jan	Feb	Mar	Apr	May	Jun	Jul	Aug	Sep	Oct	Nov	Dec
# Pre Sys BP	65	66	64	65	65	66	66	67	61	58	59	57
# Pre Sys BP <= 165	61	61	61	63	62	62	63	61	56	52	51	50
Pop. Mean	138	138	137	135	135	135	134	134	139	140	141	142
Std. Deviation	18.1	19.0	19.8	19.2	19.2	19.6	19.7	20.8	21.0	21.8	19.5	19.8
% Pre Sys BP <=165	94%	92%	95%	97%	95%	94%	94%	90%	92%	90%	86%	86%



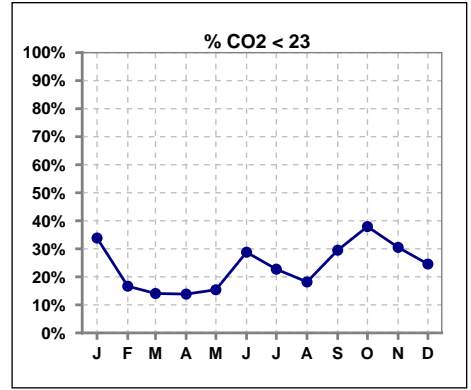
	Jan	Feb	Mar	Apr	May	Jun	Jul	Aug	Sep	Oct	Nov	Dec
# L processed/kg	65	66	64	65	65	66	66	67	61	58	59	57
# L processed/kg>=0.8	57	59	58	57	58	59	59	57	53	54	54	51
Pop. Mean	1	1	1	1	1	1	1	1	1	1	1	1
Std. Deviation	0.3	0.3	0.3	0.3	0.3	0.3	0.3	0.3	0.3	0.3	0.3	0.3
% L processed/kg>=0.8	88%	89%	91%	88%	89%	89%	89%	85%	87%	93%	92%	89%



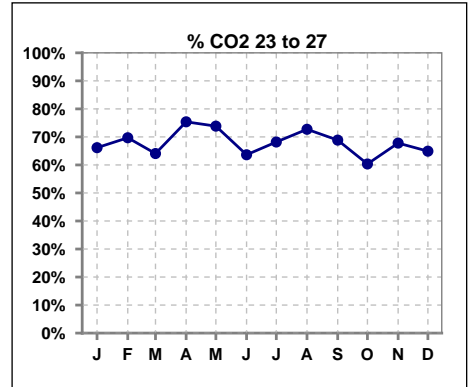
Methodology: a) All labs for 'Adequacy of Dialysis', 'Nutrition', 'Osteodystrophy', 'Anemia' and 'Diabetes' based on last value of month; b) BP's and #L processed are average of all values for month; c) Access data takes last access of month; d) Values for SGA and 'Infection Control' use most recent result.

**I. ADEQUACY OF DIALYSIS - CONT.**

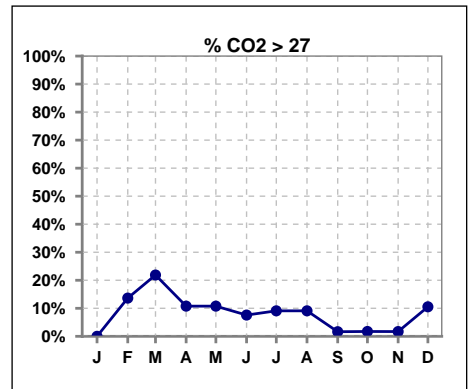
	Jan	Feb	Mar	Apr	May	Jun	Jul	Aug	Sep	Oct	Nov	Dec
# CO2	65	66	64	65	65	66	66	66	61	58	59	57
# CO2 < 23	22	11	9	9	10	19	15	12	18	22	18	14
Pop. Mean	23	25	25	25	25	24	25	24	24	24	24	24
Std. Deviation	2.25	2.64	2.41	2.21	2.36	2.56	2.60	2.47	2.36	2.54	2.37	2.81
% CO2 < 23	34%	17%	14%	14%	15%	29%	23%	18%	30%	38%	31%	25%



	Jan	Feb	Mar	Apr	May	Jun	Jul	Aug	Sep	Oct	Nov	Dec
# CO2	65	66	64	65	65	66	66	66	61	58	59	57
# CO2 23 to 27	43	46	41	49	48	42	45	48	42	35	40	37
Pop. Mean	23	25	25	25	25	24	25	24	24	24	24	24
Std. Deviation	2.25	2.64	2.41	2.21	2.36	2.56	2.60	2.47	2.36	2.54	2.37	2.81
% CO2 23 to 27	66%	70%	64%	75%	74%	64%	68%	73%	69%	60%	68%	65%



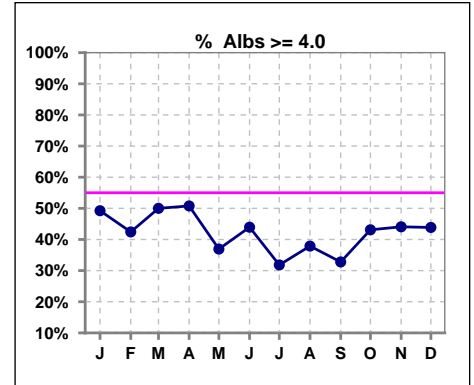
	Jan	Feb	Mar	Apr	May	Jun	Jul	Aug	Sep	Oct	Nov	Dec
# CO2	65	66	64	65	65	66	66	66	61	58	59	57
# CO2 > 27	0	9	14	7	7	5	6	6	1	1	1	6
Pop. Mean	23	25	25	25	25	24	25	24	24	24	24	24
Std. Deviation	2.25	2.64	2.41	2.21	2.36	2.56	2.60	2.47	2.36	2.54	2.37	2.81
% CO2 > 27	0%	14%	22%	11%	11%	8%	9%	9%	2%	2%	2%	11%



\*Albumin values use BCG method - as of July 2001

**II. NUTRITION**

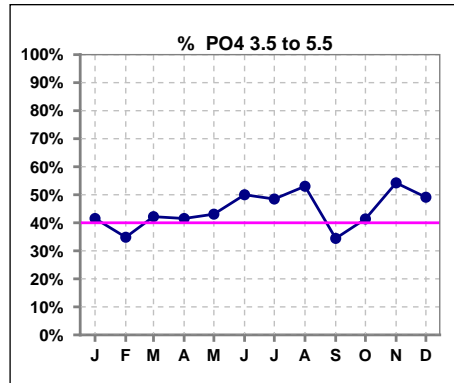
	Jan	Feb	Mar	Apr	May	Jun	Jul	Aug	Sep	Oct	Nov	Dec
# Albumin	65	66	64	65	65	66	66	66	61	58	59	57
# Albumin >= 4.0	32	28	32	33	24	29	21	25	20	25	26	25
Pop. Mean	3.9	3.9	3.9	3.9	3.8	3.9	3.8	3.8	3.8	3.8	3.9	3.9
Std. Deviation	0.39	0.40	0.39	0.37	0.36	0.41	0.39	0.37	0.38	0.44	0.41	0.39
% Alb >= 4.0	49%	42%	50%	51%	37%	44%	32%	38%	33%	43%	44%	44%



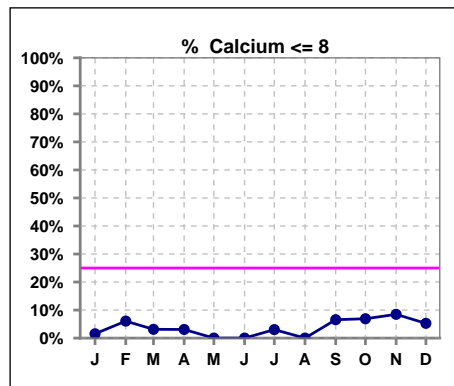
Lab methodology for PTH changed January 2012

**III. OSTEODYSTROPHY**

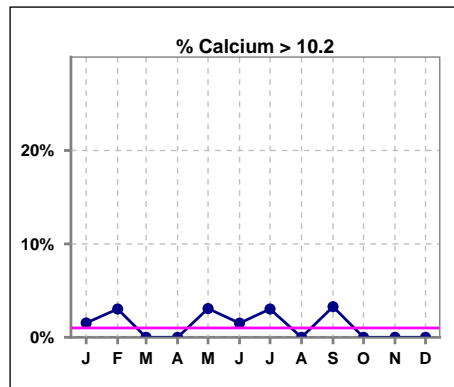
	Jan	Feb	Mar	Apr	May	Jun	Jul	Aug	Sep	Oct	Nov	Dec
# PO4	65	66	64	65	65	66	66	66	61	58	59	57
# PO4 3.5 to 5.5	27	23	27	27	28	33	32	35	21	24	32	28
Pop. Mean	6.0	6.0	5.8	5.8	5.9	5.7	5.5	5.5	6.0	5.4	5.3	5.5
Std. Deviation	1.98	2.04	1.63	1.43	1.74	1.91	1.70	1.46	1.77	1.47	1.18	1.41
% PO4 3.5 to 5.5	42%	35%	42%	42%	43%	50%	48%	53%	34%	41%	54%	49%



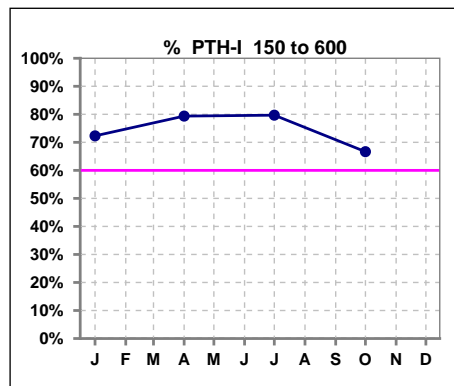
	Jan	Feb	Mar	Apr	May	Jun	Jul	Aug	Sep	Oct	Nov	Dec
# Calcium	65	66	64	65	65	66	66	66	61	58	59	57
# Calcium <= 8	1	4	2	2	0	0	2	0	4	4	5	3
Pop. Mean	9.2	9.2	9.3	9.2	9.3	9.2	9.2	9.2	9.1	9.1	9.1	9.2
Std. Deviation	0.61	0.80	0.51	0.54	0.63	0.58	0.68	0.49	0.69	0.67	0.64	0.60
% Calcium <= 8	2%	6%	3%	3%	0%	0%	3%	0%	7%	7%	8%	5%



	Jan	Feb	Mar	Apr	May	Jun	Jul	Aug	Sep	Oct	Nov	Dec
# Calcium	65	66	64	65	65	66	66	66	61	58	59	57
# Calcium > 10.2	1	2	0	0	2	1	2	0	2	0	0	0
Pop. Mean	9.2	9.2	9.3	9.2	9.3	9.2	9.2	9.2	9.1	9.1	9.1	9.2
Std. Deviation	0.61	0.80	0.51	0.54	0.63	0.58	0.68	0.49	0.69	0.67	0.64	0.60
% Calcium > 10.2	2%	3%	0%	0%	3%	2%	3%	0%	3%	0%	0%	0%



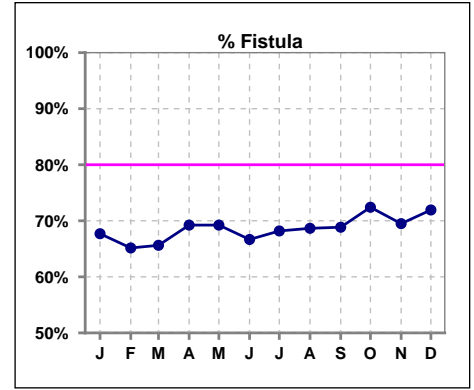
	Jan	Feb	Mar	Apr	May	Jun	Jul	Aug	Sep	Oct	Nov	Dec
# PTH-I	65			63			64			57		
# PTH-I 150 to 600	47			50			51			38		
Pop. Mean	479			394			391			354		
Std. Deviation	348			239			283			227		
% PTH-I 150 to 600	72%			79%			80%			67%		



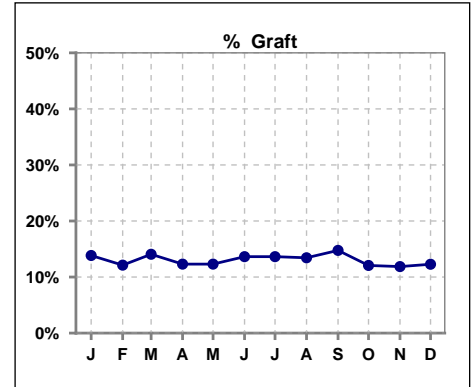
Methodology: a) All labs for 'Adequacy of Dialysis', 'Nutrition', 'Osteodystrophy', 'Anemia' and 'Diabetes' based on last value of month; b) BP's and #L processed are average of all values for month; c) Access data takes last access of month; d) Values for SGA and 'Infection Control' use most recent result.

**IV. ACCESS**

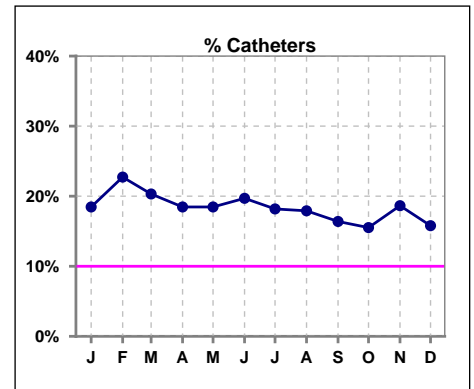
	Jan	Feb	Mar	Apr	May	Jun	Jul	Aug	Sep	Oct	Nov	Dec
# Access	65	66	64	65	65	66	66	67	61	58	59	57
# Fistula	44	43	42	45	45	44	45	46	42	42	41	41
% Fistula	68%	65%	66%	69%	69%	67%	68%	69%	69%	72%	69%	72%



	Jan	Feb	Mar	Apr	May	Jun	Jul	Aug	Sep	Oct	Nov	Dec
# Access	65	66	64	65	65	66	66	67	61	58	59	57
# Graft	9	8	9	8	8	9	9	9	9	7	7	7
% Graft	14%	12%	14%	12%	12%	14%	14%	13%	15%	12%	12%	12%



	Jan	Feb	Mar	Apr	May	Jun	Jul	Aug	Sep	Oct	Nov	Dec
# Access	65	66	64	65	65	66	66	67	61	58	59	57
# Catheters	12	15	13	12	12	13	12	12	10	9	11	9
% Catheters	18%	23%	20%	18%	18%	20%	18%	18%	16%	16%	19%	16%



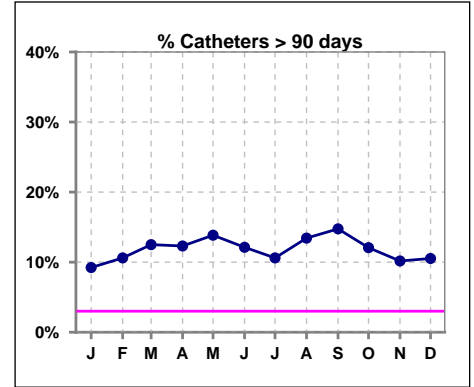
Methodology: a) All labs for 'Adequacy of Dialysis', 'Nutrition', 'Osteodystrophy', 'Anemia' and 'Diabetes' based on last value of month; b) BP's and #L processed are average of all values for month; c) Access data takes last access of month; d) Values for SGA and 'Infection Control' use most recent result.

**IV. ACCESS - CONT.**

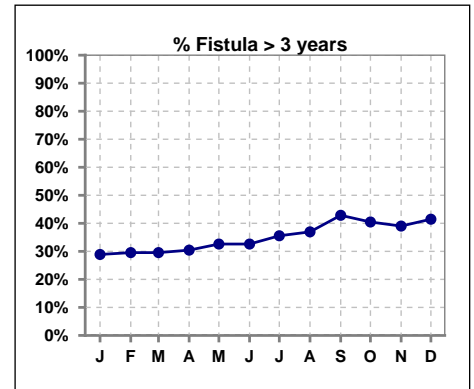
**Catheters > 90 days**

	Jan	Feb	Mar	Apr	May	Jun	Jul	Aug	Sep	Oct	Nov	Dec
# Access	65	66	64	65	65	66	66	67	61	58	59	57
# Catheters	6	7	8	8	9	8	7	9	9	7	6	6
<b>% Catheters</b>	<b>9%</b>	<b>11%</b>	<b>13%</b>	<b>12%</b>	<b>14%</b>	<b>12%</b>	<b>11%</b>	<b>13%</b>	<b>15%</b>	<b>12%</b>	<b>10%</b>	<b>11%</b>

Definition: Catheter in use on last treatment of the month



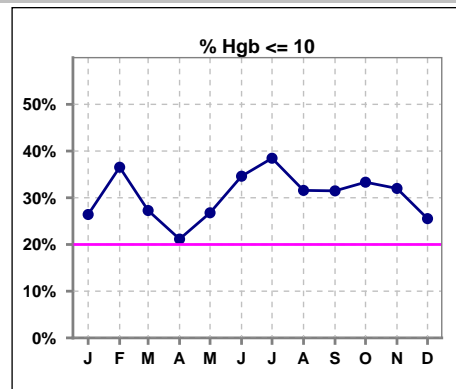
	Jan	Feb	Mar	Apr	May	Jun	Jul	Aug	Sep	Oct	Nov	Dec
# Fistula	45	44	44	46	46	46	45	46	42	42	41	41
# Fistula > 3 yrs	13	13	13	14	15	15	16	17	18	17	16	17
<b>% Fistula &gt; 3 yrs</b>	<b>29%</b>	<b>30%</b>	<b>30%</b>	<b>30%</b>	<b>33%</b>	<b>33%</b>	<b>36%</b>	<b>37%</b>	<b>43%</b>	<b>40%</b>	<b>39%</b>	<b>41%</b>



**V. ANEMIA**

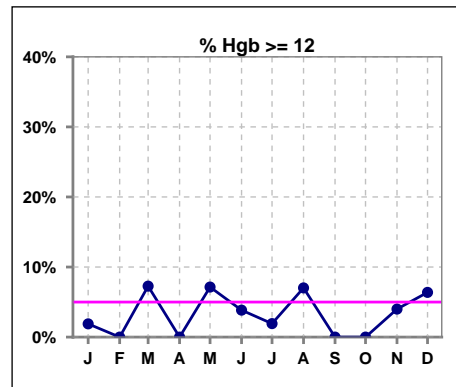
	Jan	Feb	Mar	Apr	May	Jun	Jul	Aug	Sep	Oct	Nov	Dec
# Hgb	53	52	55	52	56	52	52	57	54	51	50	47
# Hgb <= 10	14	19	15	11	15	18	20	18	17	17	16	12
Pop. Mean	10.7	10.4	10.7	10.5	10.5	10.4	10.2	10.5	10.3	10.3	10.4	10.5
Std. Deviation	1.0	1.1	1.1	1.0	1.0	1.2	1.1	1.1	0.8	0.9	1.2	1.1
% Hgb <= 10	26%	37%	27%	21%	27%	35%	38%	32%	31%	33%	32%	26%

Note: Excludes patients who received no ESA in month.



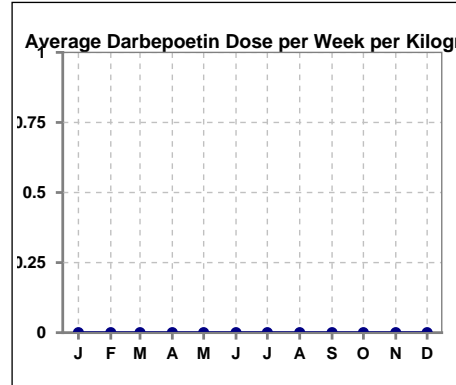
	Jan	Feb	Mar	Apr	May	Jun	Jul	Aug	Sep	Oct	Nov	Dec
# Hgb	53	52	55	52	56	52	52	57	54	51	50	47
# Hgb >= 12	1	0	4	0	4	2	1	4	0	0	2	3
Pop. Mean	10.7	10.4	10.7	10.5	10.5	10.4	10.2	10.5	10.3	10.3	10.4	10.5
Std. Deviation	1.0	1.1	1.1	1.0	1.0	1.2	1.1	1.1	0.8	0.9	1.2	1.1
% Hgb >= 12	2%	0%	7%	0%	7%	4%	2%	7%	0%	0%	4%	6%

Note: Excludes patients who received no ESA in month.



**Average Darbepoetin Dose per Week per Kilogram**

	Jan	Feb	Mar	Apr	May	Jun	Jul	Aug	Sep	Oct	Nov	Dec
# Average Darbepoetin	0	0	0	0	0	0	0	0	0	0	0	0

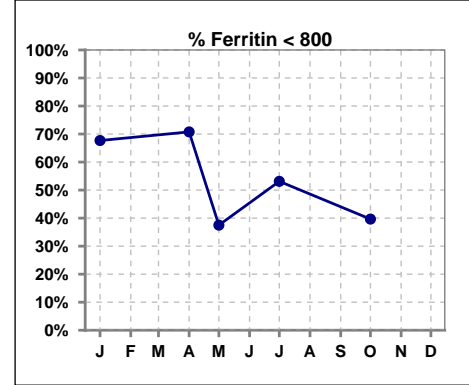




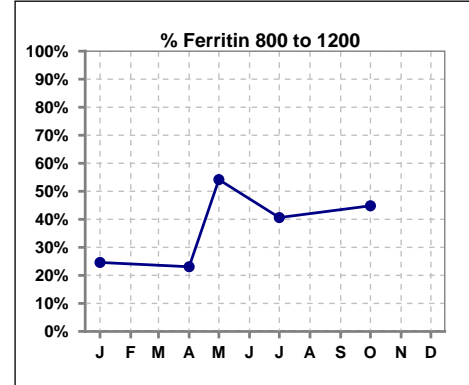
**V. ANEMIA - CONT.**

**Iron Profile**

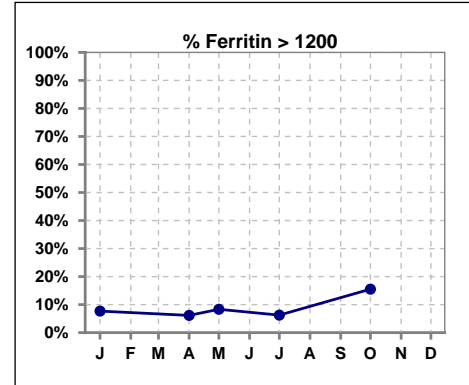
	Jan	Feb	Mar	Apr	May	Jun	Jul	Aug	Sep	Oct	Nov	Dec
# Ferritin	65			65	24		64			58		
# Ferritin < 800	44			46	9		34			23		
Pop. Mean	669			687	874		746			857		
Std. Deviation	356			318	273		300			392		
<b>% Ferritin &lt; 800</b>	<b>68%</b>			<b>71%</b>	<b>38%</b>		<b>53%</b>			<b>40%</b>		



	Jan	Feb	Mar	Apr	May	Jun	Jul	Aug	Sep	Oct	Nov	Dec
# Ferritin	65			65	24		64			58		
# Ferritin 800 to 1200	16			15	13		26			26		
Pop. Mean	669			687	874		746			857		
Std. Deviation	356			318	273		300			392		
<b>% Ferritin 800 to 1200</b>	<b>25%</b>			<b>23%</b>	<b>54%</b>		<b>41%</b>			<b>45%</b>		

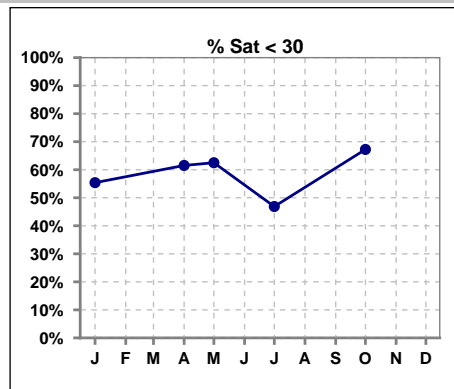


	Jan	Feb	Mar	Apr	May	Jun	Jul	Aug	Sep	Oct	Nov	Dec
# Ferritin	65			65	24		64			58		
# Ferritin > 1200	5			4	2		4			9		
Pop. Mean	669			687	874		746			857		
Std. Deviation	356			318	273		300			392		
<b>% Ferritin &gt; 1200</b>	<b>8%</b>			<b>6%</b>	<b>8%</b>		<b>6%</b>			<b>16%</b>		

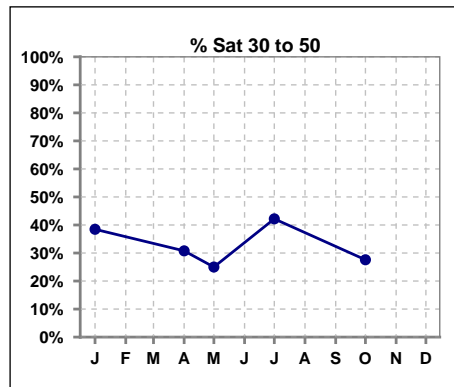


**V. ANEMIA - CONT.**

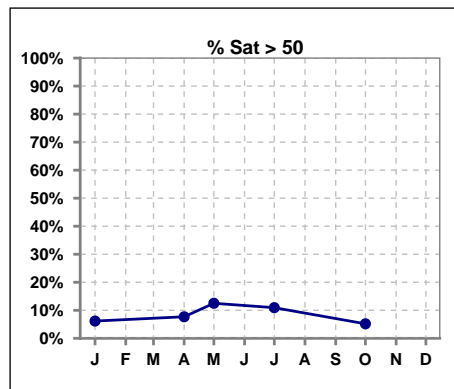
	Jan	Feb	Mar	Apr	May	Jun	Jul	Aug	Sep	Oct	Nov	Dec
# % Sat	65			65	24		64			58		
# % Sat < 30	36			40	15		30			39		
Pop. Mean	29			28	30		32			27		
Std. Deviation	14			14	15		16			11		
<b>% % Sat &lt; 30</b>	<b>55%</b>			<b>62%</b>	<b>63%</b>		<b>47%</b>			<b>67%</b>		



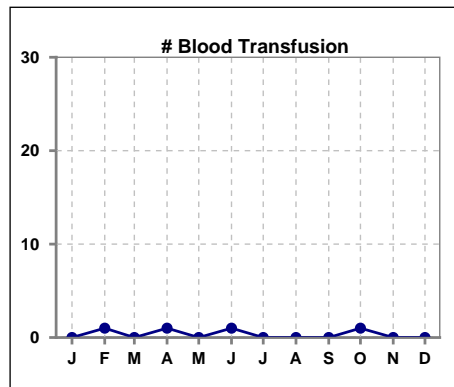
	Jan	Feb	Mar	Apr	May	Jun	Jul	Aug	Sep	Oct	Nov	Dec
# % Sat	65			65	24		64			58		
# % Sat 30 to 50	25			20	6		27			16		
Pop. Mean	29			28	30		32			27		
Std. Deviation	14			14	15		16			11		
<b>% % Sat 30 to 50</b>	<b>38%</b>			<b>31%</b>	<b>25%</b>		<b>42%</b>			<b>28%</b>		



	Jan	Feb	Mar	Apr	May	Jun	Jul	Aug	Sep	Oct	Nov	Dec
# % Sat	65			65	24		64			58		
# % Sat > 50	4			5	3		7			3		
Pop. Mean	29			28	30		32			27		
Std. Deviation	14			14	15		16			11		
<b>% % Sat &gt; 50</b>	<b>6%</b>			<b>8%</b>	<b>13%</b>		<b>11%</b>			<b>5%</b>		



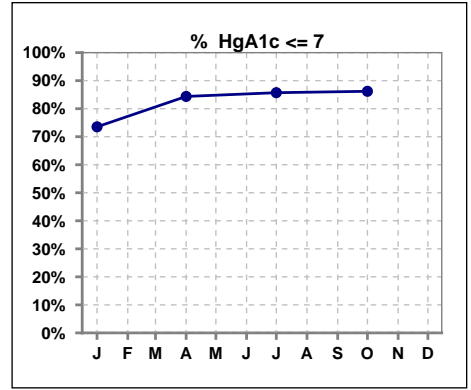
	Jan	Feb	Mar	Apr	May	Jun	Jul	Aug	Sep	Oct	Nov	Dec
# Patient	65	66	64	65	65	66	66	67	61	63	59	57
# Blood Transfusion	0	1	0	1	0	1	0	0	0	1	0	0



Methodology: a) All labs for 'Adequacy of Dialysis', 'Nutrition', 'Osteodystrophy', 'Anemia' and 'Diabetes' based on last value of month; b) BP's and #L processed are average of all values for month; c) Access data takes last access of month; d) Values for SGA and 'Infection Control' use most recent result.

**VI. Diabetes**

	Jan	Feb	Mar	Apr	May	Jun	Jul	Aug	Sep	Oct	Nov	Dec
# HgA1c	34			32			35			29		
# HgA1c <= 7	25			27			30			25		
Pop. Mean	6.1			6.5			6.2			6.2		
Std. Deviation	1.10			0.92			0.95			0.90		
<b>% HgA1c &lt;= 7</b>	<b>74%</b>			<b>84%</b>			<b>86%</b>			<b>86%</b>		

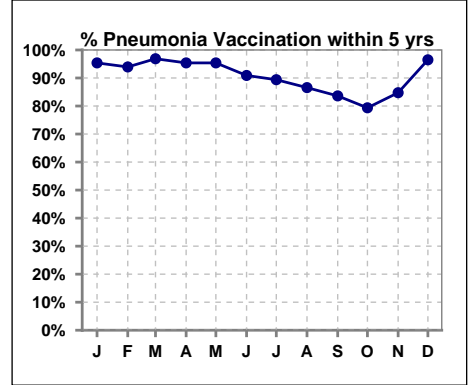


Methodology: a) All labs for 'Adequacy of Dialysis', 'Nutrition', 'Osteodystrophy', 'Anemia' and 'Diabetes' based on last value of month; b) BP's and #L processed are average of all values for month; c) Access data takes last access of month; d) Values for SGA and 'Infection Control' use most recent result.

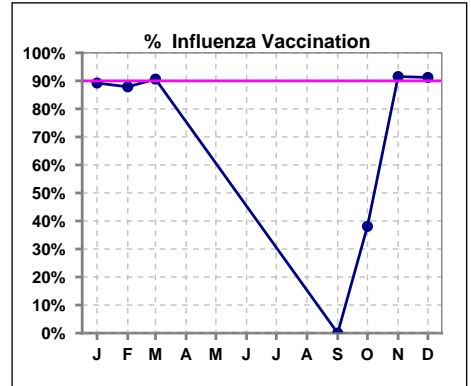
**VII. Infection Control**

**Pneumonia vaccination within the past five years**

	Jan	Feb	Mar	Apr	May	Jun	Jul	Aug	Sep	Oct	Nov	Dec
# Patient	65	66	64	65	65	66	66	67	61	63	59	57
# Pneumonia	62	62	62	62	62	60	59	58	51	50	50	55
% Pneumonia	95%	94%	97%	95%	95%	91%	89%	87%	84%	79%	85%	96%



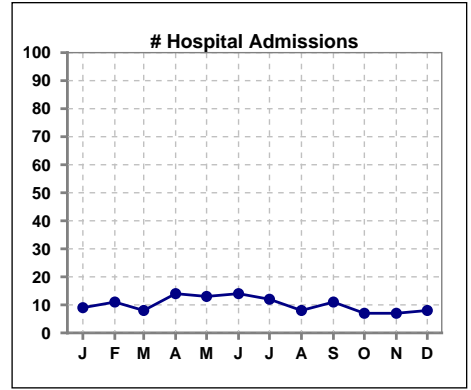
	Jan	Feb	Mar	Apr	May	Jun	Jul	Aug	Sep	Oct	Nov	Dec
# Patient	65	66	64						61	63	59	57
# Influenza	58	58	58						0	24	54	52
% Influenza	89%	88%	91%						0%	38%	92%	91%



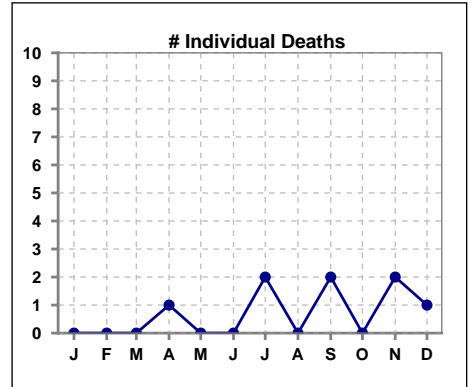
Methodology: a) All labs for 'Adequacy of Dialysis', 'Nutrition', 'Osteodystrophy', 'Anemia' and 'Diabetes' based on last value of month; b) BP's and #L processed are average of all values for month; c) Access data takes last access of month; d) Values for SGA and 'Infection Control' use most recent result.

**VIII. Outcome measures**

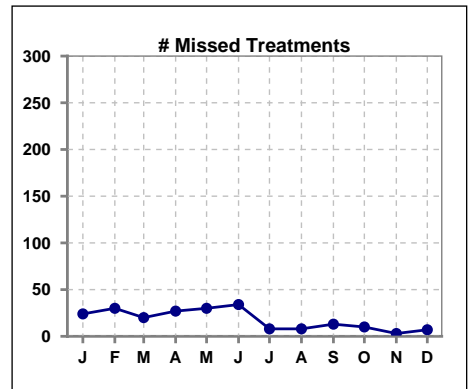
	Jan	Feb	Mar	Apr	May	Jun	Jul	Aug	Sep	Oct	Nov	Dec
# Patient	65	66	64	65	65	66	66	67	61	63	59	57
# Hospital Admissions	9	11	8	14	13	14	12	8	11	7	7	8



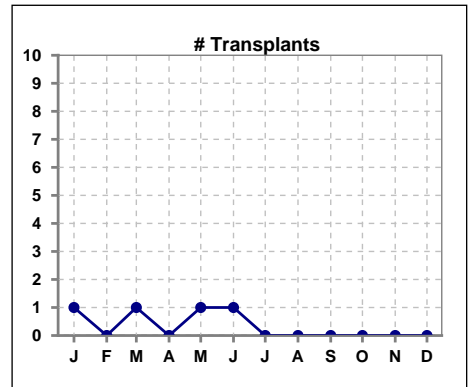
	Jan	Feb	Mar	Apr	May	Jun	Jul	Aug	Sep	Oct	Nov	Dec
# Patient	65	66	64	65	65	66	66	67	61	63	59	57
# Individual Deaths	0	0	0	1	0	0	2	0	2	0	2	1



	Jan	Feb	Mar	Apr	May	Jun	Jul	Aug	Sep	Oct	Nov	Dec
# Patient	65	66	64	65	65	66	66	67	61	63	59	57
# Missed Treatments	24	30	20	27	30	34	8	8	13	10	3	7



	Jan	Feb	Mar	Apr	May	Jun	Jul	Aug	Sep	Oct	Nov	Dec
# Patient	65	66	64	65	65	66	66	67	61	63	59	57
# Transplants	1	0	1	0	1	1	0	0	0	0	0	0



Methodology: a) All labs for 'Adequacy of Dialysis', 'Nutrition', 'Osteodystrophy', 'Anemia' and 'Diabetes' based on last value of month; b) BP's and #L processed are average of all values for month; c) Access data takes last access of month; d) Values for SGA and 'Infection Control' use most recent result.