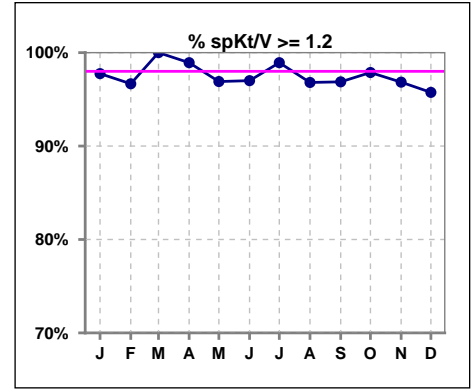
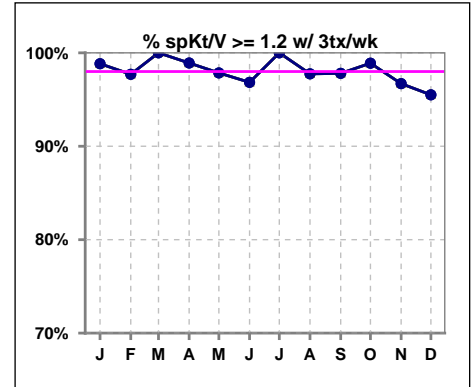


**I. ADEQUACY OF DIALYSIS**

	Jan	Feb	Mar	Apr	May	Jun	Jul	Aug	Sep	Oct	Nov	Dec
# spKt/V	89	90	88	93	97	100	93	94	96	94	95	94
# spKt/V >= 1.2	87	87	88	92	94	97	92	91	93	92	92	90
Pop. Mean	1.62	1.59	1.65	1.61	1.64	1.62	1.84	1.83	1.87	1.60	1.59	1.60
Std. Deviation	0.29	0.25	0.24	0.26	0.28	0.29	1.31	1.31	1.29	0.30	0.27	0.27
% spKt/V >= 1.2	98%	97%	100%	99%	97%	97%	99%	97%	97%	98%	97%	96%



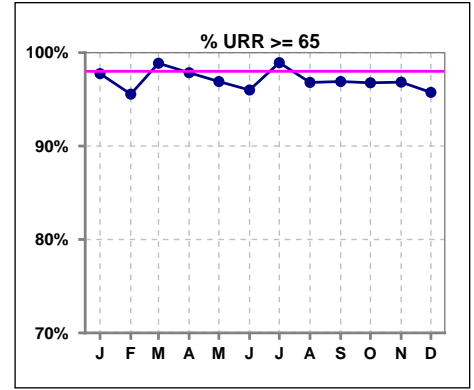
	Jan	Feb	Mar	Apr	May	Jun	Jul	Aug	Sep	Oct	Nov	Dec
# spKt/V w/ 3tx/wk	86	87	86	92	93	95	88	89	91	90	91	89
# spKt/V >= 1.2 w/3tx/wk	85	85	86	91	91	92	88	87	89	89	88	85
Pop. Mean	1.62	1.59	1.66	1.62	1.65	1.63	1.62	1.61	1.66	1.60	1.59	1.60
Std. Deviation	0.29	0.25	0.24	0.26	0.27	0.29	0.24	0.26	0.25	0.30	0.27	0.27
% >= 1.2 w/3tx/wk	99%	98%	100%	99%	98%	97%	100%	98%	98%	99%	97%	96%



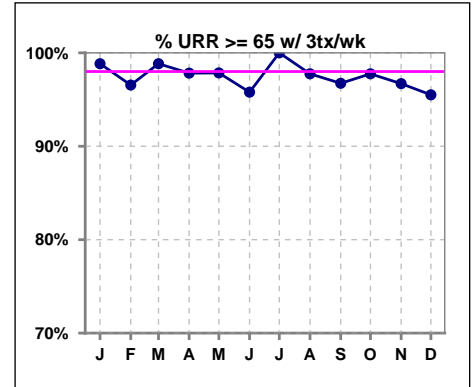
Methodology: a) All labs for 'Adequacy of Dialysis', 'Nutrition', 'Osteodystrophy', 'Anemia' and 'Diabetes' based on last value of month; b) BP's and #L processed are average of all values for month; c) Access data takes last access of month; d) Values for SGA and 'Infection Control' use most recent result.

**I. ADEQUACY OF DIALYSIS - CONT.**

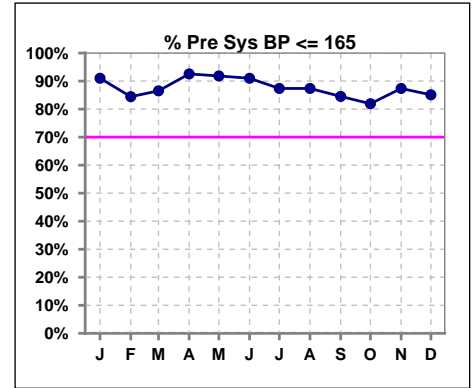
	Jan	Feb	Mar	Apr	May	Jun	Jul	Aug	Sep	Oct	Nov	Dec
# URR	89	90	88	93	97	100	93	94	97	93	95	94
# URR >= 65	87	86	87	91	94	96	92	91	94	90	92	90
Pop. Mean	75	75	76	75	76	75	75	75	76	75	74	75
Std. Deviation	5.88	5.43	4.76	5.76	6.38	5.85	5.04	6.17	5.57	5.88	6.25	5.95
% URR >= 65	98%	96%	99%	98%	97%	96%	99%	97%	97%	97%	97%	96%



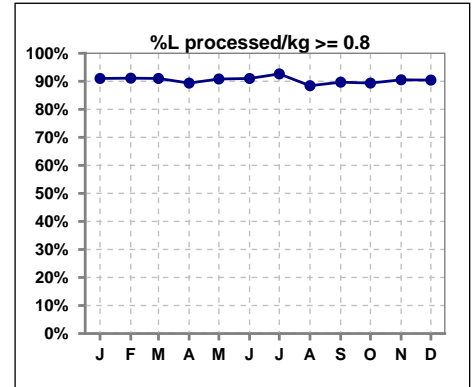
	Jan	Feb	Mar	Apr	May	Jun	Jul	Aug	Sep	Oct	Nov	Dec
# URR w/ 3tx/wk	86	87	86	92	93	95	88	89	92	89	91	89
# URR>=65 w/ 3tx/wk	85	84	85	90	91	91	88	87	89	87	88	85
Pop. Mean	75	75	76	75	76	75	75	75	76	75	74	74
Std. Deviation	5.85	5.41	4.70	5.70	6.12	5.82	4.67	5.86	5.58	5.69	6.27	5.99
% URR>=65 w/ 3tx/wk	99%	97%	99%	98%	98%	96%	100%	98%	97%	98%	97%	96%



	Jan	Feb	Mar	Apr	May	Jun	Jul	Aug	Sep	Oct	Nov	Dec
# Pre Sys BP	89	90	89	94	98	100	95	95	97	94	95	94
# Pre Sys BP <= 165	82	76	78	87	90	91	83	84	83	80	84	80
Pop. Mean	141	142	140	140	139	140	142	142	143	144	143	142
Std. Deviation	19.0	21.1	20.0	18.2	19.0	18.4	19.8	19.0	20.7	20.1	20.1	21.3
% Pre Sys BP <=165	91%	84%	87%	93%	92%	91%	87%	87%	85%	82%	87%	85%



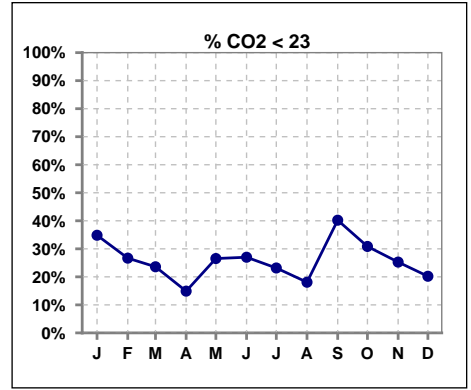
	Jan	Feb	Mar	Apr	May	Jun	Jul	Aug	Sep	Oct	Nov	Dec
# L processed/kg	89	90	89	94	98	100	95	95	97	94	95	94
# L processed/kg>=0.8	81	82	81	84	89	91	88	84	87	84	86	85
Pop. Mean	1	1	1	1	1	1	1	1	1	1	1	1
Std. Deviation	0.3	0.3	0.3	0.3	0.3	0.3	0.3	0.3	0.3	0.3	0.3	0.3
% L processed/kg>=0.8	91%	91%	91%	89%	91%	91%	93%	88%	90%	89%	91%	90%



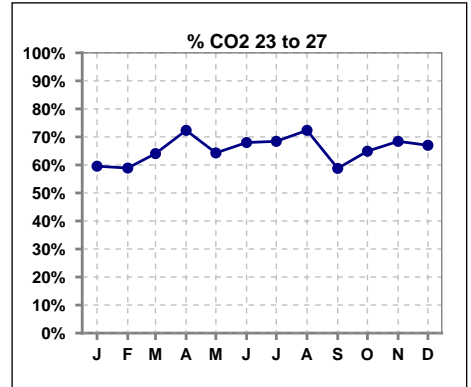
Methodology: a) All labs for 'Adequacy of Dialysis', 'Nutrition', 'Osteodystrophy', 'Anemia' and 'Diabetes' based on last value of month; b) BP's and #L processed are average of all values for month; c) Access data takes last access of month; d) Values for SGA and 'Infection Control' use most recent result.

**I. ADEQUACY OF DIALYSIS - CONT.**

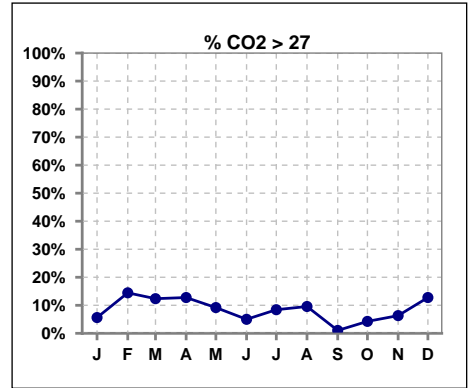
	Jan	Feb	Mar	Apr	May	Jun	Jul	Aug	Sep	Oct	Nov	Dec
# CO2	89	90	89	94	98	100	95	94	97	94	95	94
# CO2 < 23	31	24	21	14	26	27	22	17	39	29	24	19
Pop. Mean	24	24	24	25	24	24	24	25	23	24	24	25
Std. Deviation	2.74	2.94	2.66	2.58	2.75	2.73	2.47	2.48	2.71	2.85	2.63	2.65
% CO2 < 23	35%	27%	24%	15%	27%	27%	23%	18%	40%	31%	25%	20%



	Jan	Feb	Mar	Apr	May	Jun	Jul	Aug	Sep	Oct	Nov	Dec
# CO2	89	90	89	94	98	100	95	94	97	94	95	94
# CO2 23 to 27	53	53	57	68	63	68	65	68	57	61	65	63
Pop. Mean	24	24	24	25	24	24	24	25	23	24	24	25
Std. Deviation	2.74	2.94	2.66	2.58	2.75	2.73	2.47	2.48	2.71	2.85	2.63	2.65
% CO2 23 to 27	60%	59%	64%	72%	64%	68%	68%	72%	59%	65%	68%	67%



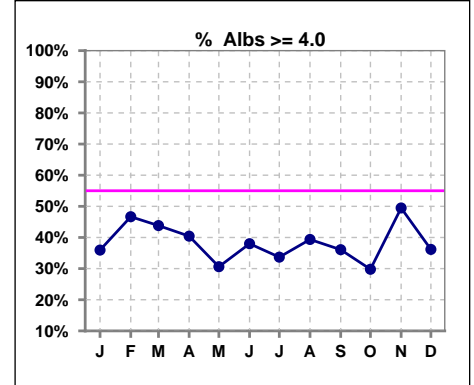
	Jan	Feb	Mar	Apr	May	Jun	Jul	Aug	Sep	Oct	Nov	Dec
# CO2	89	90	89	94	98	100	95	94	97	94	95	94
# CO2 > 27	5	13	11	12	9	5	8	9	1	4	6	12
Pop. Mean	24	24	24	25	24	24	24	25	23	24	24	25
Std. Deviation	2.74	2.94	2.66	2.58	2.75	2.73	2.47	2.48	2.71	2.85	2.63	2.65
% CO2 > 27	6%	14%	12%	13%	9%	5%	8%	10%	1%	4%	6%	13%



\*Albumin values use BCG method - as of July 2001

**II. NUTRITION**

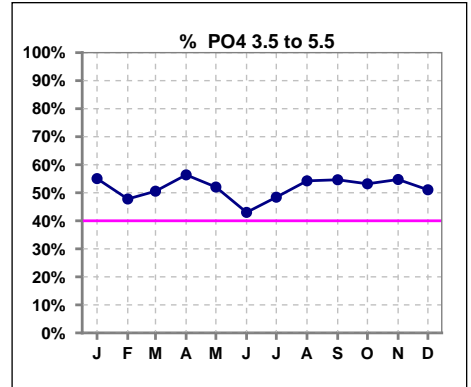
	Jan	Feb	Mar	Apr	May	Jun	Jul	Aug	Sep	Oct	Nov	Dec
# Albumin	89	90	89	94	98	100	95	94	97	94	95	94
# Albumin >= 4.0	32	42	39	38	30	38	32	37	35	28	47	34
Pop. Mean	3.8	3.9	3.9	3.8	3.8	3.9	3.8	3.8	3.8	3.8	3.9	3.8
Std. Deviation	0.40	0.33	0.35	0.36	0.31	0.32	0.30	0.33	0.42	0.38	0.42	0.35
% Alb >= 4.0	36%	47%	44%	40%	31%	38%	34%	39%	36%	30%	49%	36%



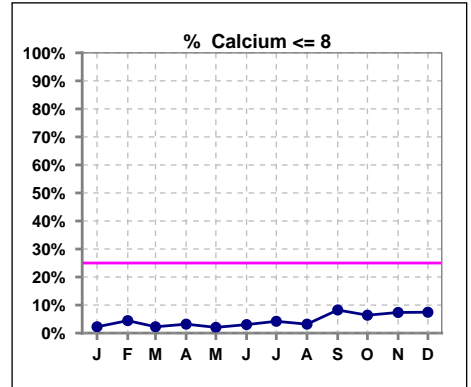
Lab methodology for PTH changed January 2012

**III. OSTEODYSTROPHY**

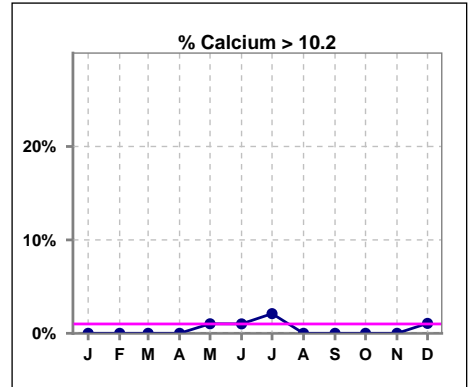
	Jan	Feb	Mar	Apr	May	Jun	Jul	Aug	Sep	Oct	Nov	Dec
# PO4	89	90	89	94	98	100	95	94	97	94	95	94
# PO4 3.5 to 5.5	49	43	45	53	51	43	46	51	53	50	52	48
Pop. Mean	5.7	5.7	5.5	5.3	5.4	5.5	5.4	5.4	5.4	5.4	5.6	5.8
Std. Deviation	1.77	1.88	1.70	1.52	1.60	1.52	1.37	1.31	1.66	1.45	1.65	1.67
% PO4 3.5 to 5.5	55%	48%	51%	56%	52%	43%	48%	54%	55%	53%	55%	51%



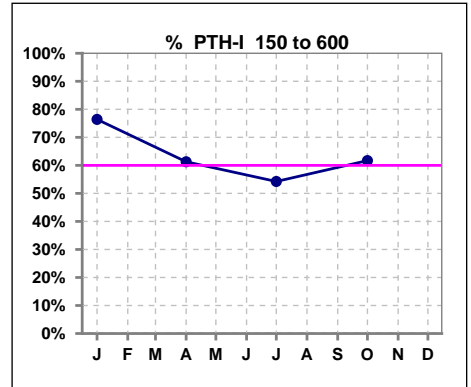
	Jan	Feb	Mar	Apr	May	Jun	Jul	Aug	Sep	Oct	Nov	Dec
# Calcium	89	90	89	94	98	99	95	94	97	94	95	94
# Calcium <= 8	2	4	2	3	2	3	4	3	8	6	7	7
Pop. Mean	9.2	9.2	9.4	9.2	9.3	9.3	9.4	9.3	9.2	9.1	9.1	9.2
Std. Deviation	0.57	0.66	0.56	0.61	0.57	0.58	0.63	0.53	0.68	0.67	0.69	0.73
% Calcium <= 8	2%	4%	2%	3%	2%	3%	4%	3%	8%	6%	7%	7%



	Jan	Feb	Mar	Apr	May	Jun	Jul	Aug	Sep	Oct	Nov	Dec
# Calcium	89	90	89	94	98	99	95	94	97	94	95	94
# Calcium > 10.2	0	0	0	0	1	1	2	0	0	0	0	1
Pop. Mean	9.2	9.2	9.4	9.2	9.3	9.3	9.4	9.3	9.2	9.1	9.1	9.2
Std. Deviation	0.57	0.66	0.56	0.61	0.57	0.58	0.63	0.53	0.68	0.67	0.69	0.73
% Calcium > 10.2	0%	0%	0%	0%	1%	1%	2%	0%	0%	0%	0%	1%



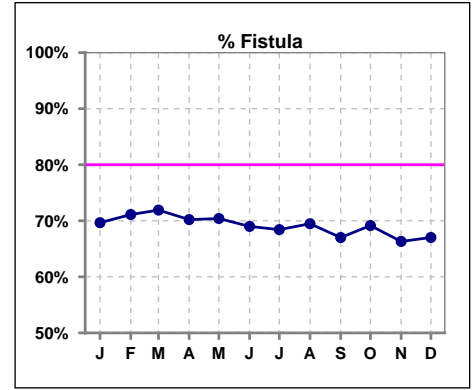
	Jan	Feb	Mar	Apr	May	Jun	Jul	Aug	Sep	Oct	Nov	Dec
# PTH-I	89			93			94			94		
# PTH-I 150 to 600	68			57			51			58		
Pop. Mean	443			422			415			494		
Std. Deviation	399			338			400			477		
% PTH-I 150 to 600	76%			61%			54%			62%		



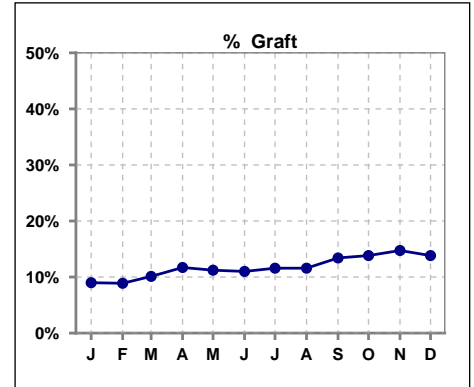
Methodology: a) All labs for 'Adequacy of Dialysis', 'Nutrition', 'Osteodystrophy', 'Anemia' and 'Diabetes' based on last value of month; b) BP's and #L processed are average of all values for month; c) Access data takes last access of month; d) Values for SGA and 'Infection Control' use most recent result.

**IV. ACCESS**

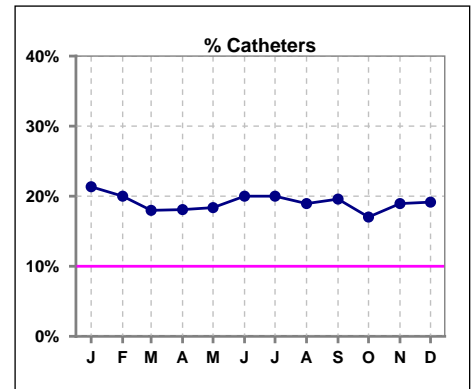
	Jan	Feb	Mar	Apr	May	Jun	Jul	Aug	Sep	Oct	Nov	Dec
<b># Access</b>	89	90	89	94	98	100	95	95	97	94	95	94
<b># Fistula</b>	62	64	64	66	69	69	65	66	65	65	63	63
<b>% Fistula</b>	70%	71%	72%	70%	70%	69%	68%	69%	67%	69%	66%	67%



	Jan	Feb	Mar	Apr	May	Jun	Jul	Aug	Sep	Oct	Nov	Dec
<b># Access</b>	89	90	89	94	98	100	95	95	97	94	95	94
<b># Graft</b>	8	8	9	11	11	11	11	11	13	13	14	13
<b>% Graft</b>	9%	9%	10%	12%	11%	11%	12%	12%	13%	14%	15%	14%



	Jan	Feb	Mar	Apr	May	Jun	Jul	Aug	Sep	Oct	Nov	Dec
<b># Access</b>	89	90	89	94	98	100	95	95	97	94	95	94
<b># Catheters</b>	19	18	16	17	18	20	19	18	19	16	18	18
<b>% Catheters</b>	21%	20%	18%	18%	18%	20%	20%	19%	20%	17%	19%	19%



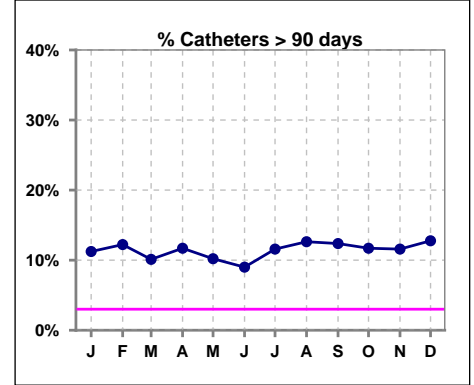
Methodology: a) All labs for 'Adequacy of Dialysis', 'Nutrition', 'Osteodystrophy', 'Anemia' and 'Diabetes' based on last value of month; b) BP's and #L processed are average of all values for month; c) Access data takes last access of month; d) Values for SGA and 'Infection Control' use most recent result.

**IV. ACCESS - CONT.**

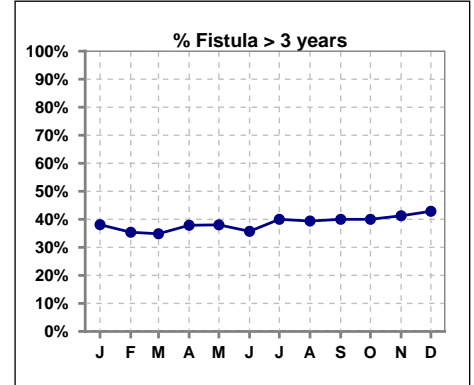
**Catheters > 90 days**

	Jan	Feb	Mar	Apr	May	Jun	Jul	Aug	Sep	Oct	Nov	Dec
<b># Access</b>	89	90	89	94	98	100	95	95	97	94	95	94
<b># Catheters</b>	10	11	9	11	10	9	11	12	12	11	11	12
<b>% Catheters</b>	11%	12%	10%	12%	10%	9%	12%	13%	12%	12%	12%	13%

Definition: Catheter in use on last treatment of the month



	Jan	Feb	Mar	Apr	May	Jun	Jul	Aug	Sep	Oct	Nov	Dec
<b># Fistula</b>	63	65	66	66	71	70	65	66	65	65	63	63
<b># Fistula &gt; 3 yrs</b>	24	23	23	25	27	25	26	26	26	26	26	27
<b>% Fistula &gt; 3 yrs</b>	38%	35%	35%	38%	38%	36%	40%	39%	40%	40%	41%	43%

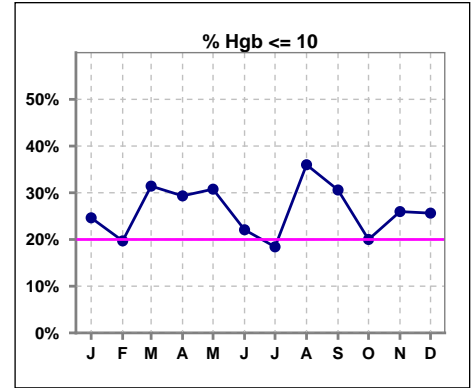


Methodology: a) All labs for 'Adequacy of Dialysis', 'Nutrition', 'Osteodystrophy', 'Anemia' and 'Diabetes' based on last value of month; b) BP's and #L processed are average of all values for month; c) Access data takes last access of month; d) Values for SGA and 'Infection Control' use most recent result.

**V. ANEMIA**

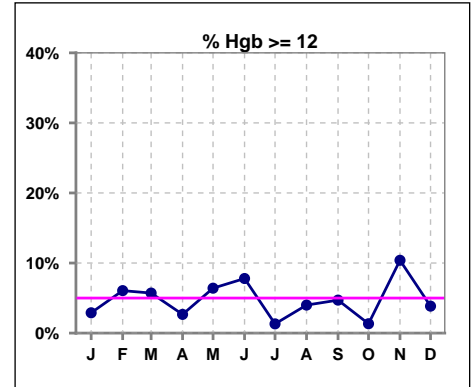
	Jan	Feb	Mar	Apr	May	Jun	Jul	Aug	Sep	Oct	Nov	Dec
# Hgb	69	66	70	75	78	77	76	75	85	75	77	78
# Hgb <= 10	17	13	22	22	24	17	14	27	26	15	20	20
Pop. Mean	10.5	10.6	10.4	10.4	10.4	10.6	10.6	10.3	10.4	10.5	10.6	10.5
Std. Deviation	1.2	1.2	1.3	1.2	1.4	1.2	0.9	1.3	1.3	1.0	1.4	1.3
% Hgb <= 10	25%	20%	31%	29%	31%	22%	18%	36%	31%	20%	26%	26%

Note: Excludes patients who received no ESA in month.



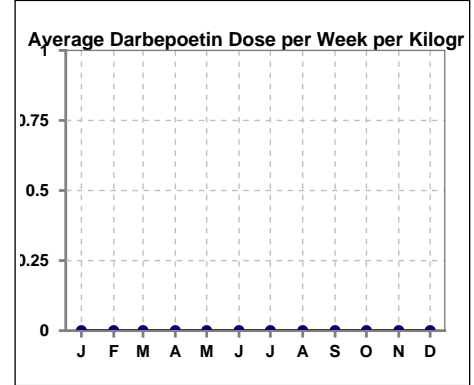
	Jan	Feb	Mar	Apr	May	Jun	Jul	Aug	Sep	Oct	Nov	Dec
# Hgb	69	66	70	75	78	77	76	75	85	75	77	78
# Hgb >= 12	2	4	4	2	5	6	1	3	4	1	8	3
Pop. Mean	10.5	10.6	10.4	10.4	10.4	10.6	10.6	10.3	10.4	10.5	10.6	10.5
Std. Deviation	1.2	1.2	1.3	1.2	1.4	1.2	0.9	1.3	1.3	1.0	1.4	1.3
% Hgb >= 12	3%	6%	6%	3%	6%	8%	1%	4%	5%	1%	10%	4%

Note: Excludes patients who received no ESA in month.



**Average Darbepoetin Dose per Week per Kilogram**

	Jan	Feb	Mar	Apr	May	Jun	Jul	Aug	Sep	Oct	Nov	Dec
# Average Darbepoetin	0	0	0	0	0	0	0	0	0	0	0	0

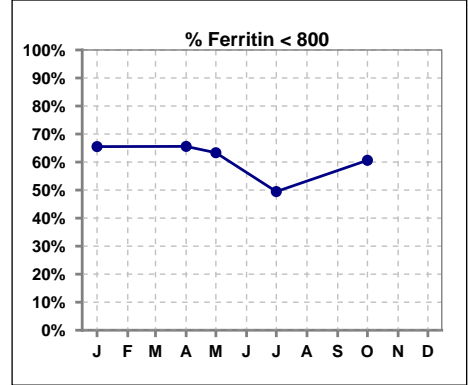




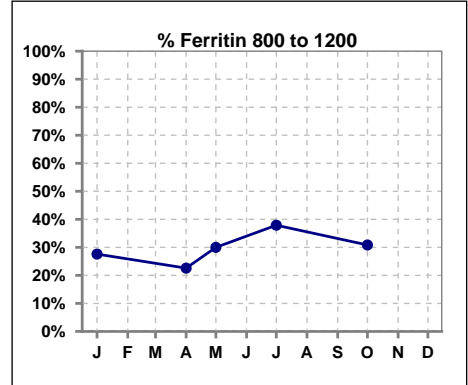
**V. ANEMIA - CONT.**

**Iron Profile**

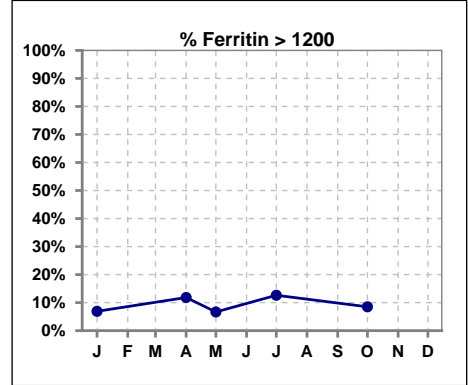
	Jan	Feb	Mar	Apr	May	Jun	Jul	Aug	Sep	Oct	Nov	Dec
# Ferritin	87			93	30		95			94		
# Ferritin < 800	57			61	19		47			57		
Pop. Mean	794			790	841		840			798		
Std. Deviation	627			680	1078		630			746		
<b>% Ferritin &lt; 800</b>	<b>66%</b>			<b>66%</b>	<b>63%</b>		<b>49%</b>			<b>61%</b>		



	Jan	Feb	Mar	Apr	May	Jun	Jul	Aug	Sep	Oct	Nov	Dec
# Ferritin	87			93	30		95			94		
# Ferritin 800 to 1200	24			21	9		36			29		
Pop. Mean	794			790	841		840			798		
Std. Deviation	627			680	1078		630			746		
<b>% Ferritin 800 to 1200</b>	<b>28%</b>			<b>23%</b>	<b>30%</b>		<b>38%</b>			<b>31%</b>		

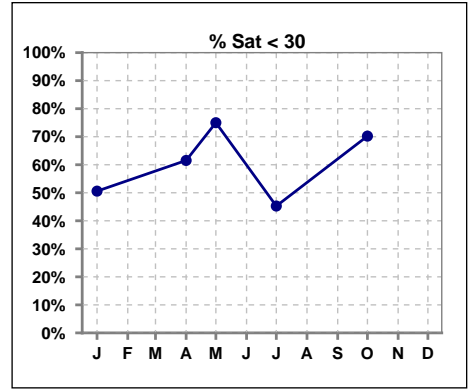


	Jan	Feb	Mar	Apr	May	Jun	Jul	Aug	Sep	Oct	Nov	Dec
# Ferritin	87			93	30		95			94		
# Ferritin > 1200	6			11	2		12			8		
Pop. Mean	794			790	841		840			798		
Std. Deviation	627			680	1078		630			746		
<b>% Ferritin &gt; 1200</b>	<b>7%</b>			<b>12%</b>	<b>7%</b>		<b>13%</b>			<b>9%</b>		

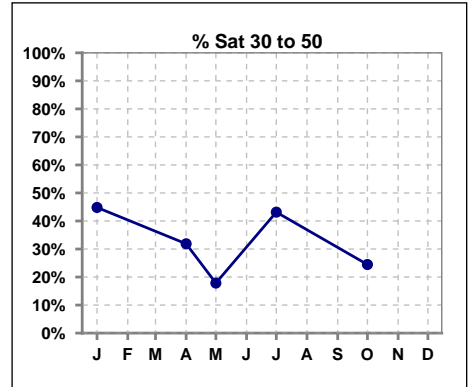


**V. ANEMIA - CONT.**

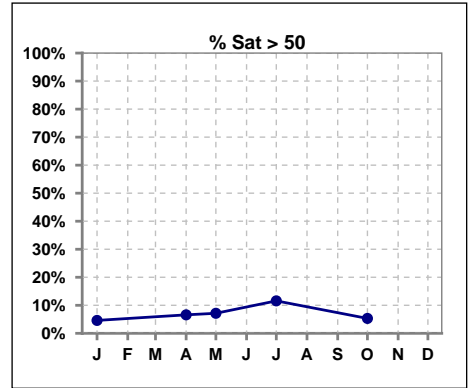
	Jan	Feb	Mar	Apr	May	Jun	Jul	Aug	Sep	Oct	Nov	Dec
# % Sat	87			91	28		95			94		
# % Sat < 30	44			56	21		43			66		
Pop. Mean	30			30	25		32			26		
Std. Deviation	14			13	12		17			16		
<b>%% Sat &lt; 30</b>	<b>51%</b>			<b>62%</b>	<b>75%</b>		<b>45%</b>			<b>70%</b>		



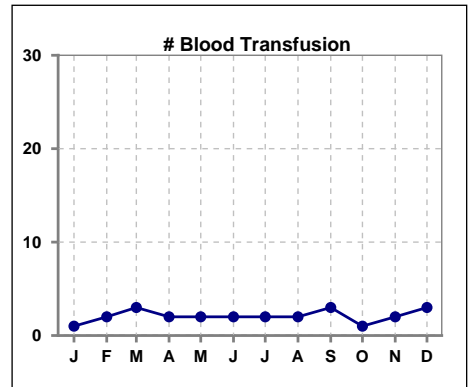
	Jan	Feb	Mar	Apr	May	Jun	Jul	Aug	Sep	Oct	Nov	Dec
# % Sat	87			91	28		95			94		
# % Sat 30 to 50	39			29	5		41			23		
Pop. Mean	30			30	25		32			26		
Std. Deviation	14			13	12		17			16		
<b>%% Sat 30 to 50</b>	<b>45%</b>			<b>32%</b>	<b>18%</b>		<b>43%</b>			<b>24%</b>		



	Jan	Feb	Mar	Apr	May	Jun	Jul	Aug	Sep	Oct	Nov	Dec
# % Sat	87			91	28		95			94		
# % Sat > 50	4			6	2		11			5		
Pop. Mean	30			30	25		32			26		
Std. Deviation	14			13	12		17			16		
<b>%% Sat &gt; 50</b>	<b>5%</b>			<b>7%</b>	<b>7%</b>		<b>12%</b>			<b>5%</b>		



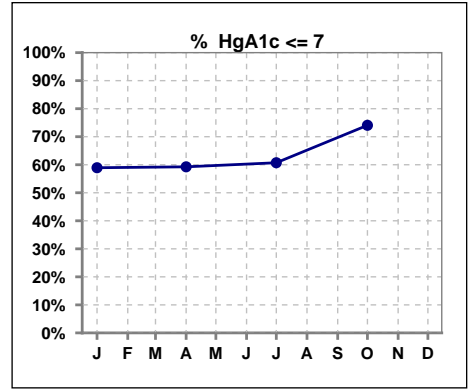
	Jan	Feb	Mar	Apr	May	Jun	Jul	Aug	Sep	Oct	Nov	Dec
# Patient	89	90	89	94	98	100	95	95	97	98	95	94
<b># Blood Transfusion</b>	<b>1</b>	<b>2</b>	<b>3</b>	<b>2</b>	<b>2</b>	<b>2</b>	<b>2</b>	<b>2</b>	<b>3</b>	<b>1</b>	<b>2</b>	<b>3</b>



Methodology: a) All labs for 'Adequacy of Dialysis', 'Nutrition', 'Osteodystrophy', 'Anemia' and 'Diabetes' based on last value of month; b) BP's and #L processed are average of all values for month; c) Access data takes last access of month; d) Values for SGA and 'Infection Control' use most recent result.

**VI. Diabetes**

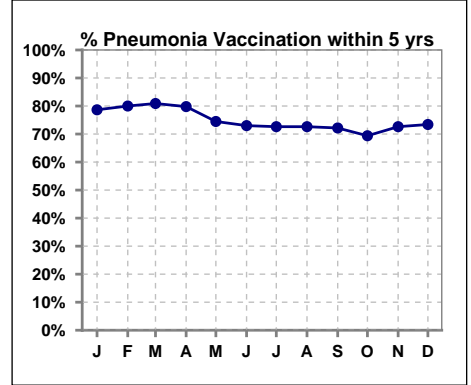
	Jan	Feb	Mar	Apr	May	Jun	Jul	Aug	Sep	Oct	Nov	Dec
# HgA1c	56			54			56			54		
# HgA1c <= 7	33			32			34			40		
Pop. Mean	7.0			6.9			6.8			6.6		
Std. Deviation	1.17			1.28			1.21			1.27		
<b>% HgA1c &lt;= 7</b>	<b>59%</b>			<b>59%</b>			<b>61%</b>			<b>74%</b>		



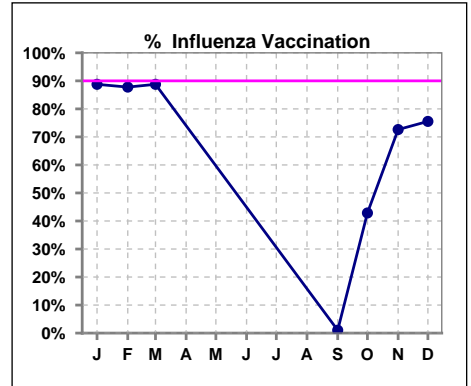
**VII. Infection Control**

**Pneumonia vaccination within the past five years**

	Jan	Feb	Mar	Apr	May	Jun	Jul	Aug	Sep	Oct	Nov	Dec
# Patient	89	90	89	94	98	100	95	95	97	98	95	94
# Pneumonia	70	72	72	75	73	73	69	69	70	68	69	69
% Pneumonia	79%	80%	81%	80%	74%	73%	73%	73%	72%	69%	73%	73%



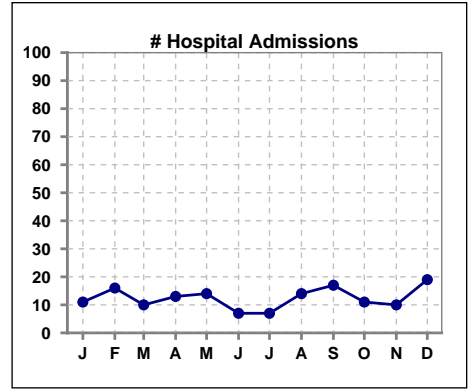
	Jan	Feb	Mar	Apr	May	Jun	Jul	Aug	Sep	Oct	Nov	Dec
# Patient	89	90	89						97	98	95	94
# Influenza	79	79	79						1	42	69	71
% Influenza	89%	88%	89%						1%	43%	73%	76%



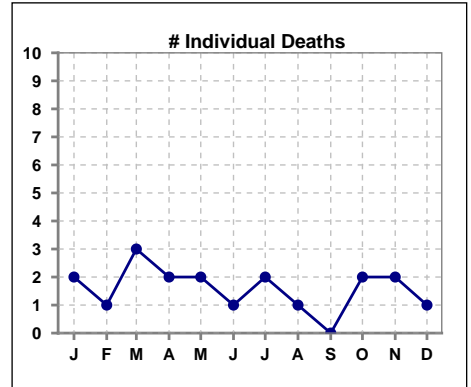
Methodology: a) All labs for 'Adequacy of Dialysis', 'Nutrition', 'Osteodystrophy', 'Anemia' and 'Diabetes' based on last value of month; b) BP's and #L processed are average of all values for month; c) Access data takes last access of month; d) Values for SGA and 'Infection Control' use most recent result.

**VIII. Outcome measures**

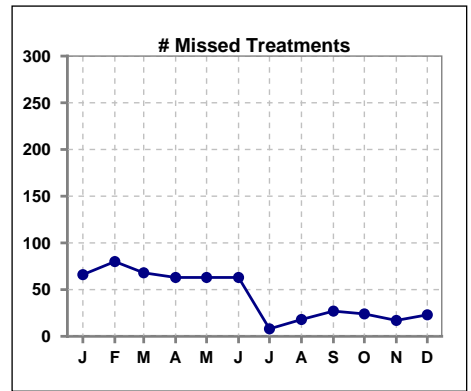
	Jan	Feb	Mar	Apr	May	Jun	Jul	Aug	Sep	Oct	Nov	Dec
# Patient	89	90	89	94	98	100	95	95	97	98	95	94
# Hospital Admissions	11	16	10	13	14	7	7	14	17	11	10	19



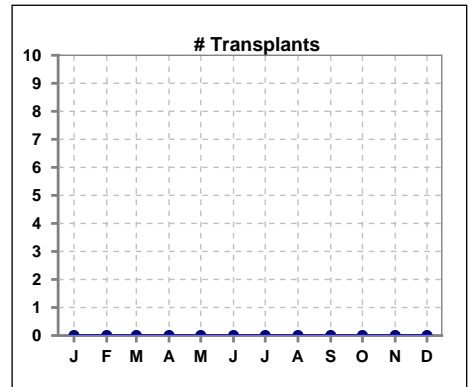
	Jan	Feb	Mar	Apr	May	Jun	Jul	Aug	Sep	Oct	Nov	Dec
# Patient	89	90	89	94	98	100	95	95	97	98	95	94
# Individual Deaths	2	1	3	2	2	1	2	1	0	2	2	1



	Jan	Feb	Mar	Apr	May	Jun	Jul	Aug	Sep	Oct	Nov	Dec
# Patient	89	90	89	94	98	100	95	95	97	98	95	94
# Missed Treatments	66	80	68	63	63	63	8	18	27	24	17	23



	Jan	Feb	Mar	Apr	May	Jun	Jul	Aug	Sep	Oct	Nov	Dec
# Patient	89	90	89	94	98	100	95	95	97	98	95	94
# Transplants	0	0	0	0	0	0	0	0	0	0	0	0



Methodology: a) All labs for 'Adequacy of Dialysis', 'Nutrition', 'Osteodystrophy', 'Anemia' and 'Diabetes' based on last value of month; b) BP's and #L processed are average of all values for month; c) Access data takes last access of month; d) Values for SGA and 'Infection Control' use most recent result.