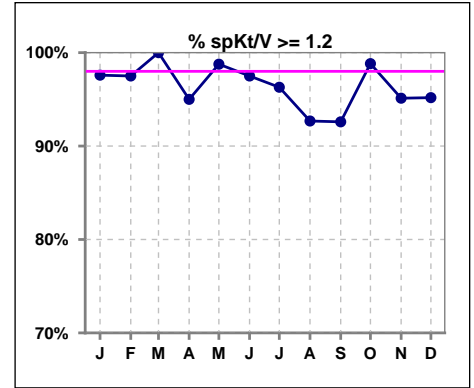
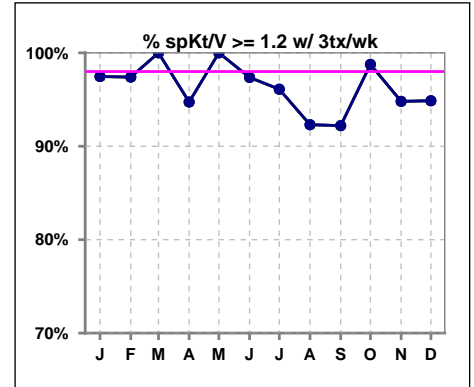


I. ADEQUACY OF DIALYSIS

	Jan	Feb	Mar	Apr	May	Jun	Jul	Aug	Sep	Oct	Nov	Dec
# spKt/V	83	80	80	80	81	80	81	82	81	85	82	83
# spKt/V >= 1.2	81	78	80	76	80	78	78	76	75	84	78	79
Pop. Mean	1.64	1.59	1.63	1.52	1.58	1.60	1.80	1.83	1.87	1.59	1.61	1.60
Std. Deviation	0.31	0.28	0.32	0.29	0.26	0.28	1.42	1.42	1.45	0.27	0.29	0.31
% spKt/V >= 1.2	98%	98%	100%	95%	99%	98%	96%	93%	93%	99%	95%	95%



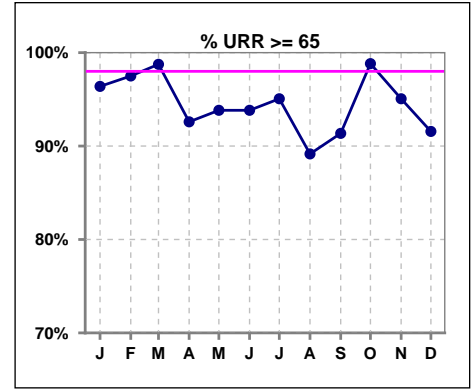
	Jan	Feb	Mar	Apr	May	Jun	Jul	Aug	Sep	Oct	Nov	Dec
# spKt/V w/ 3tx/wk	79	77	76	76	76	76	77	78	77	81	77	78
# spKt/V >= 1.2 w/3tx/wk	77	75	76	72	76	74	74	72	71	80	73	74
Pop. Mean	1.63	1.59	1.63	1.53	1.58	1.60	1.52	1.56	1.60	1.60	1.61	1.61
Std. Deviation	0.31	0.28	0.32	0.29	0.26	0.28	0.28	0.33	0.46	0.27	0.30	0.32
% >= 1.2 w/3tx/wk	97%	97%	100%	95%	100%	97%	96%	92%	92%	99%	95%	95%



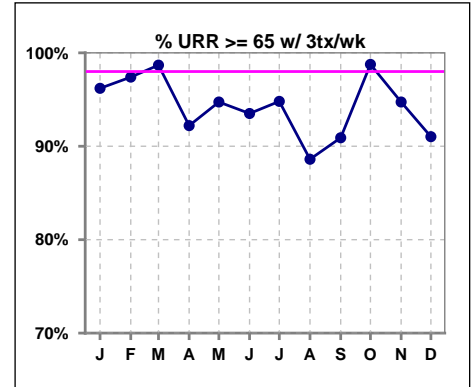
Methodology: a) All labs for 'Adequacy of Dialysis', 'Nutrition', 'Osteodystrophy', 'Anemia' and 'Diabetes' based on last value of month; b) BP's and #L processed are average of all values for month; c) Access data takes last access of month; d) Values for SGA and 'Infection Control' use most recent result.

I. ADEQUACY OF DIALYSIS - CONT.

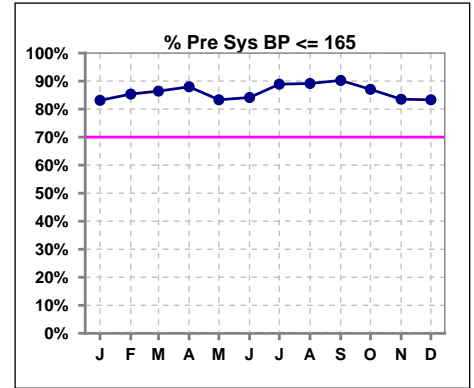
	Jan	Feb	Mar	Apr	May	Jun	Jul	Aug	Sep	Oct	Nov	Dec
# URR	83	80	80	81	81	81	81	83	81	85	81	83
# URR >= 65	80	78	79	75	76	76	77	74	74	84	77	76
Pop. Mean	75	75	75	73	74	74	72	73	74	74	75	74
Std. Deviation	5.99	5.59	5.75	7.11	5.63	8.13	5.93	8.83	7.82	5.46	5.96	6.37
% URR >= 65	96%	98%	99%	93%	94%	94%	95%	89%	91%	99%	95%	92%



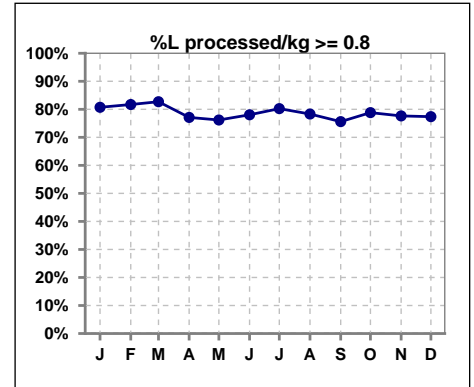
	Jan	Feb	Mar	Apr	May	Jun	Jul	Aug	Sep	Oct	Nov	Dec
# URR w/ 3tx/wk	79	77	76	77	76	77	77	79	77	81	76	78
# URR>=65 w/ 3tx/wk	76	75	75	71	72	72	73	70	70	80	72	71
Pop. Mean	75	75	75	73	74	74	73	73	74	74	75	74
Std. Deviation	6.04	5.65	5.72	7.23	5.39	8.24	5.99	8.99	7.78	5.51	6.13	6.50
% URR>=65 w/ 3tx/wk	96%	97%	99%	92%	95%	94%	95%	89%	91%	99%	95%	91%



	Jan	Feb	Mar	Apr	May	Jun	Jul	Aug	Sep	Oct	Nov	Dec
# Pre Sys BP	83	82	81	83	84	82	81	83	82	85	85	84
# Pre Sys BP <= 165	69	70	70	73	70	69	73	74	75	74	73	71
Pop. Mean	148	150	147	147	147	148	146	143	143	146	146	147
Std. Deviation	16.5	17.2	18.0	17.1	19.0	17.5	17.8	18.9	17.4	17.8	18.0	16.9
% Pre Sys BP <=165	83%	85%	86%	88%	83%	84%	89%	89%	90%	87%	84%	83%



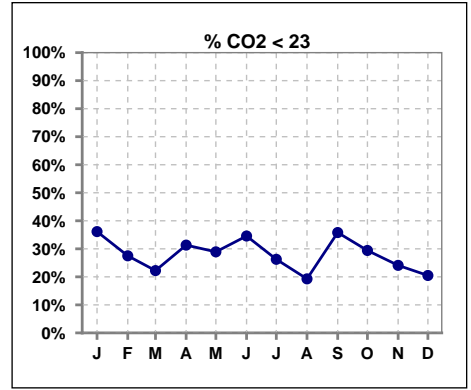
	Jan	Feb	Mar	Apr	May	Jun	Jul	Aug	Sep	Oct	Nov	Dec
# L processed/kg	83	82	81	83	84	82	81	83	82	85	85	84
# L processed/kg>=0.8	67	67	67	64	64	64	65	65	62	67	66	65
Pop. Mean	1	1	1	1	1	1	1	1	1	1	1	1
Std. Deviation	0.3	0.2	0.2	0.3	0.2	0.2	0.3	0.3	0.3	0.3	0.3	0.3
% L processed/kg>=0.8	81%	82%	83%	77%	76%	78%	80%	78%	76%	79%	78%	77%



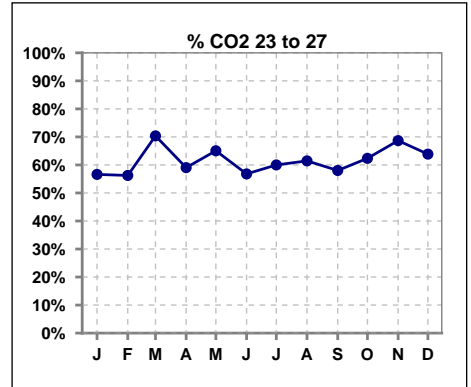
Methodology: a) All labs for 'Adequacy of Dialysis', 'Nutrition', 'Osteodystrophy', 'Anemia' and 'Diabetes' based on last value of month; b) BP's and #L processed are average of all values for month; c) Access data takes last access of month; d) Values for SGA and 'Infection Control' use most recent result.

I. ADEQUACY OF DIALYSIS - CONT.

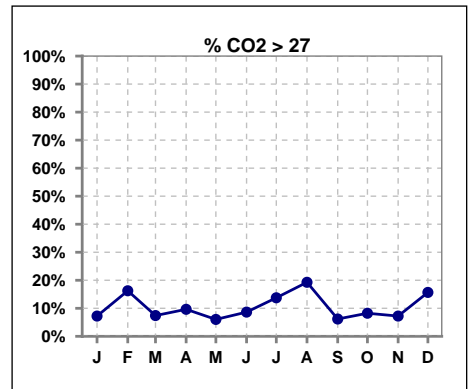
	Jan	Feb	Mar	Apr	May	Jun	Jul	Aug	Sep	Oct	Nov	Dec
# CO2	83	80	81	83	83	81	80	83	81	85	83	83
# CO2 < 23	30	22	18	26	24	28	21	16	29	25	20	17
Pop. Mean	23	24	24	24	24	24	24	25	23	24	24	24
Std. Deviation	3.05	3.47	2.88	3.04	2.99	2.87	3.18	2.94	3.20	3.18	2.64	3.38
% CO2 < 23	36%	28%	22%	31%	29%	35%	26%	19%	36%	29%	24%	20%



	Jan	Feb	Mar	Apr	May	Jun	Jul	Aug	Sep	Oct	Nov	Dec
# CO2	83	80	81	83	83	81	80	83	81	85	83	83
# CO2 23 to 27	47	45	57	49	54	46	48	51	47	53	57	53
Pop. Mean	23	24	24	24	24	24	24	25	23	24	24	24
Std. Deviation	3.05	3.47	2.88	3.04	2.99	2.87	3.18	2.94	3.20	3.18	2.64	3.38
% CO2 23 to 27	57%	56%	70%	59%	65%	57%	60%	61%	58%	62%	69%	64%



	Jan	Feb	Mar	Apr	May	Jun	Jul	Aug	Sep	Oct	Nov	Dec
# CO2	83	80	81	83	83	81	80	83	81	85	83	83
# CO2 > 27	6	13	6	8	5	7	11	16	5	7	6	13
Pop. Mean	23	24	24	24	24	24	24	25	23	24	24	24
Std. Deviation	3.05	3.47	2.88	3.04	2.99	2.87	3.18	2.94	3.20	3.18	2.64	3.38
% CO2 > 27	7%	16%	7%	10%	6%	9%	14%	19%	6%	8%	7%	16%

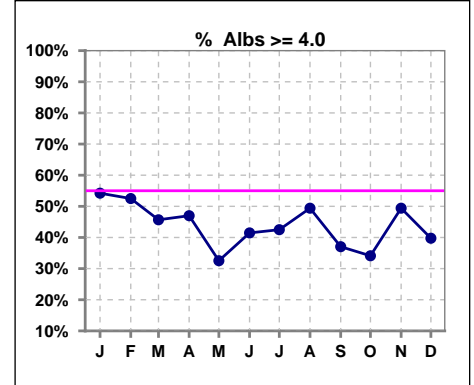


Methodology: a) All labs for 'Adequacy of Dialysis', 'Nutrition', 'Osteodystrophy', 'Anemia' and 'Diabetes' based on last value of month; b) BP's and #L processed are average of all values for month; c) Access data takes last access of month; d) Values for SGA and 'Infection Control' use most recent result.

*Albumin values use BCG method - as of July 2001

II. NUTRITION

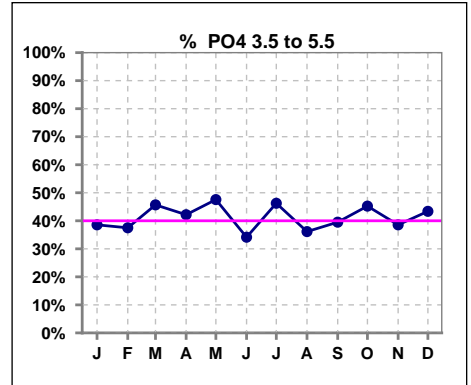
	Jan	Feb	Mar	Apr	May	Jun	Jul	Aug	Sep	Oct	Nov	Dec
# Albumin	83	80	81	83	83	82	80	83	81	85	83	83
# Albumin >= 4.0	45	42	37	39	27	34	34	41	30	29	41	33
Pop. Mean	3.9	3.9	3.8	3.8	3.7	3.8	3.8	3.8	3.7	3.7	3.8	3.8
Std. Deviation	0.43	0.43	0.42	0.46	0.46	0.43	0.41	0.48	0.49	0.46	0.51	0.46
% Alb >= 4.0	54%	53%	46%	47%	33%	41%	43%	49%	37%	34%	49%	40%



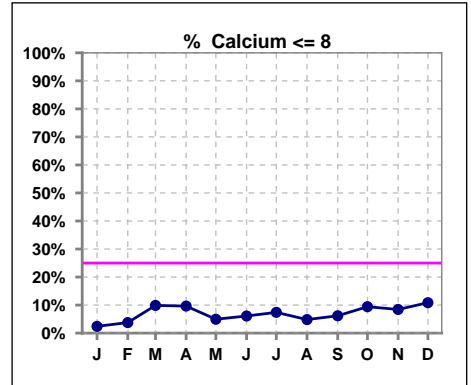
Lab methodology for PTH changed January 2012

III. OSTEODYSTROPHY

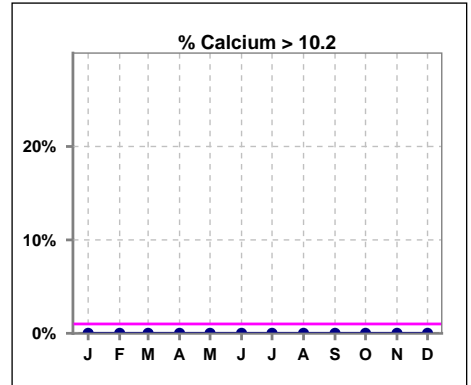
	Jan	Feb	Mar	Apr	May	Jun	Jul	Aug	Sep	Oct	Nov	Dec
# PO4	83	80	81	83	82	82	80	83	81	84	83	83
# PO4 3.5 to 5.5	32	30	37	35	39	28	37	30	32	38	32	36
Pop. Mean	5.7	6.4	6.3	5.9	5.9	6.0	5.8	5.9	6.1	6.0	6.0	5.9
Std. Deviation	2.15	2.26	2.20	2.09	2.06	1.81	1.66	1.78	1.93	2.14	1.82	1.94
% PO4 3.5 to 5.5	39%	38%	46%	42%	48%	34%	46%	36%	40%	45%	39%	43%



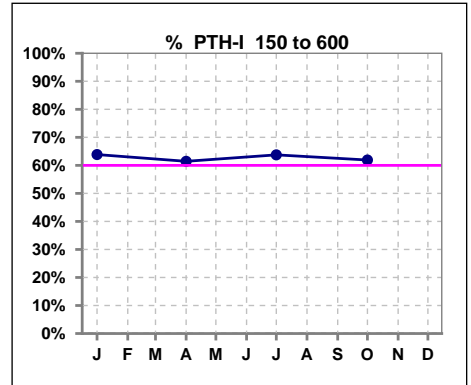
	Jan	Feb	Mar	Apr	May	Jun	Jul	Aug	Sep	Oct	Nov	Dec
# Calcium	83	80	81	83	81	82	81	83	81	85	83	83
# Calcium <= 8	2	3	8	8	4	5	6	4	5	8	7	9
Pop. Mean	9.1	9.2	9.2	9.1	9.1	9.1	9.1	9.1	9.0	9.0	9.1	9.0
Std. Deviation	0.56	0.67	0.71	0.71	0.67	0.66	0.66	0.70	0.73	0.80	0.72	0.73
% Calcium <= 8	2%	4%	10%	10%	5%	6%	7%	5%	6%	9%	8%	11%



	Jan	Feb	Mar	Apr	May	Jun	Jul	Aug	Sep	Oct	Nov	Dec
# Calcium	83	80	81	83	81	82	81	83	81	85	83	83
# Calcium > 10.2	0	0	0	0	0	0	0	0	0	0	0	0
Pop. Mean	9.1	9.2	9.2	9.1	9.1	9.1	9.1	9.1	9.0	9.0	9.1	9.0
Std. Deviation	0.56	0.67	0.71	0.71	0.67	0.66	0.66	0.70	0.73	0.80	0.72	0.73
% Calcium > 10.2	0%	0%	0%	0%	0%	0%	0%	0%	0%	0%	0%	0%



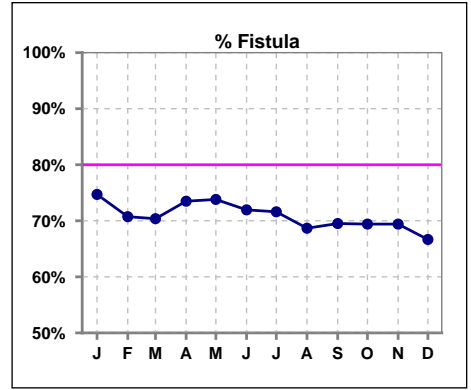
	Jan	Feb	Mar	Apr	May	Jun	Jul	Aug	Sep	Oct	Nov	Dec
# PTH-I	83			83			80			84		
# PTH-I 150 to 600	53			51			51			52		
Pop. Mean	506			448			458			449		
Std. Deviation	436			300			319			348		
% PTH-I 150 to 600	64%			61%			64%			62%		



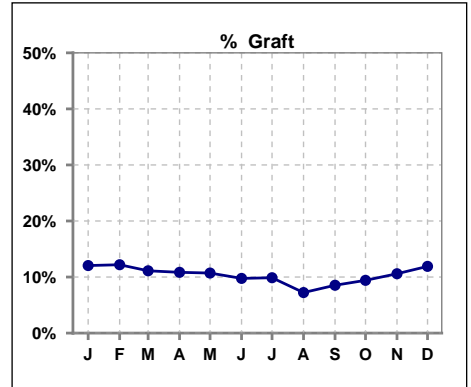
Methodology: a) All labs for 'Adequacy of Dialysis', 'Nutrition', 'Osteodystrophy', 'Anemia' and 'Diabetes' based on last value of month; b) BP's and #L processed are average of all values for month; c) Access data takes last access of month; d) Values for SGA and 'Infection Control' use most recent result.

IV. ACCESS

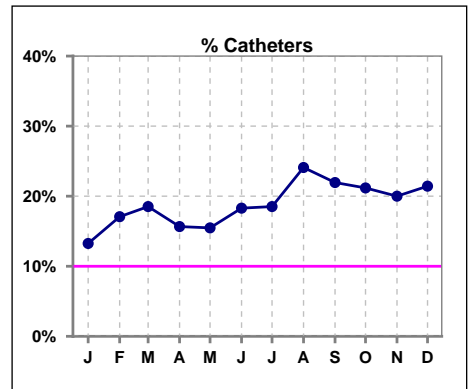
	Jan	Feb	Mar	Apr	May	Jun	Jul	Aug	Sep	Oct	Nov	Dec
# Access	83	82	81	83	84	82	81	83	82	85	85	84
# Fistula	62	58	57	61	62	59	58	57	57	59	59	56
% Fistula	75%	71%	70%	73%	74%	72%	72%	69%	70%	69%	69%	67%



	Jan	Feb	Mar	Apr	May	Jun	Jul	Aug	Sep	Oct	Nov	Dec
# Access	83	82	81	83	84	82	81	83	82	85	85	84
# Graft	10	10	9	9	9	8	8	6	7	8	9	10
% Graft	12%	12%	11%	11%	11%	10%	10%	7%	9%	9%	11%	12%



	Jan	Feb	Mar	Apr	May	Jun	Jul	Aug	Sep	Oct	Nov	Dec
# Access	83	82	81	83	84	82	81	83	82	85	85	84
# Catheters	11	14	15	13	13	15	15	20	18	18	17	18
% Catheters	13%	17%	19%	16%	15%	18%	19%	24%	22%	21%	20%	21%



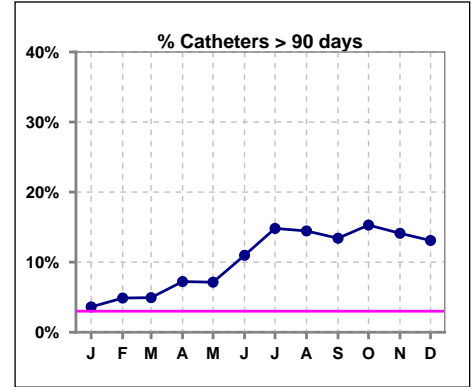
Methodology: a) All labs for 'Adequacy of Dialysis', 'Nutrition', 'Osteodystrophy', 'Anemia' and 'Diabetes' based on last value of month; b) BP's and #L processed are average of all values for month; c) Access data takes last access of month; d) Values for SGA and 'Infection Control' use most recent result.

IV. ACCESS - CONT.

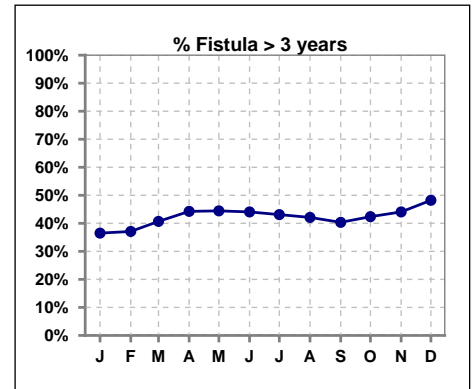
Catheters > 90 days

	Jan	Feb	Mar	Apr	May	Jun	Jul	Aug	Sep	Oct	Nov	Dec
# Access	83	82	81	83	84	82	81	83	82	85	85	84
# Catheters	3	4	4	6	6	9	12	12	11	13	12	11
% Catheters	4%	5%	5%	7%	7%	11%	15%	14%	13%	15%	14%	13%

Definition: Catheter in use on last treatment of the month



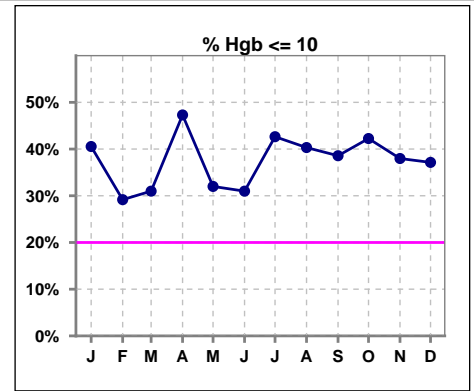
	Jan	Feb	Mar	Apr	May	Jun	Jul	Aug	Sep	Oct	Nov	Dec
# Fistula	63	62	59	61	63	59	58	57	57	59	59	56
# Fistula > 3 yrs	23	23	24	27	28	26	25	24	23	25	26	27
% Fistula > 3 yrs	37%	37%	41%	44%	44%	44%	43%	42%	40%	42%	44%	48%



V. ANEMIA

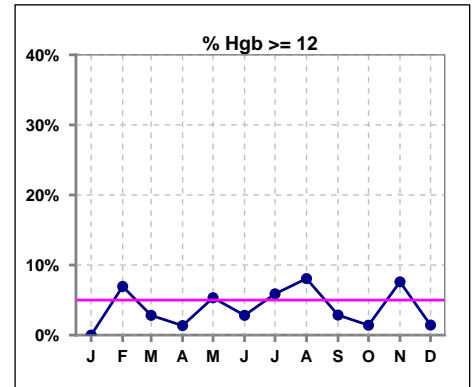
	Jan	Feb	Mar	Apr	May	Jun	Jul	Aug	Sep	Oct	Nov	Dec
# Hgb	74	72	71	74	75	71	68	62	70	71	79	70
# Hgb <= 10	30	21	22	35	24	22	29	25	27	30	30	26
Pop. Mean	10.2	10.6	10.4	10.1	10.2	10.4	10.2	10.4	10.2	10.0	10.2	10.2
Std. Deviation	1.1	1.1	1.2	1.1	1.2	1.2	1.2	1.3	1.3	1.1	1.3	1.3
% Hgb <= 10	41%	29%	31%	47%	32%	31%	43%	40%	39%	42%	38%	37%

Note: Excludes patients who received no ESA in month.



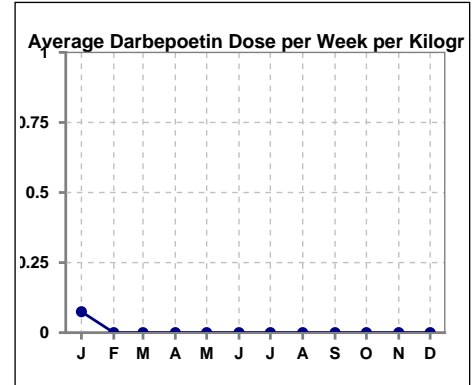
	Jan	Feb	Mar	Apr	May	Jun	Jul	Aug	Sep	Oct	Nov	Dec
# Hgb	74	72	71	74	75	71	68	62	70	71	79	70
# Hgb >= 12	0	5	2	1	4	2	4	5	2	1	6	1
Pop. Mean	10.2	10.6	10.4	10.1	10.2	10.4	10.2	10.4	10.2	10.0	10.2	10.2
Std. Deviation	1.1	1.1	1.2	1.1	1.2	1.2	1.2	1.3	1.3	1.1	1.3	1.3
% Hgb >= 12	0%	7%	3%	1%	5%	3%	6%	8%	3%	1%	8%	1%

Note: Excludes patients who received no ESA in month.



Average Darbepoetin Dose per Week per Kilogram

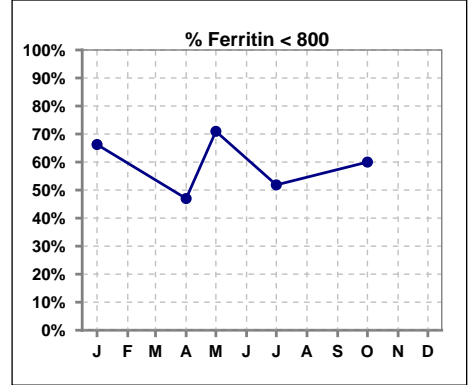
	Jan	Feb	Mar	Apr	May	Jun	Jul	Aug	Sep	Oct	Nov	Dec
# Average Darbepoetin	.1	0	0	0	0	0	0	0	0	0	0	0



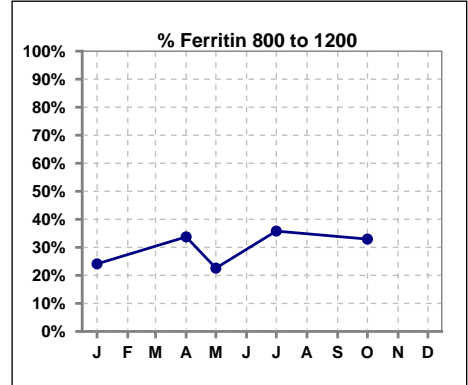
V. ANEMIA - CONT.

Iron Profile

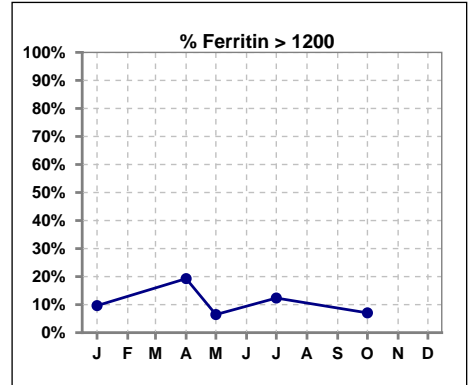
	Jan	Feb	Mar	Apr	May	Jun	Jul	Aug	Sep	Oct	Nov	Dec
# Ferritin	83			83	31		81			85		
# Ferritin < 800	55			39	22		42			51		
Pop. Mean	735			870	639		781			725		
Std. Deviation	422			467	348		328			340		
% Ferritin < 800	66%			47%	71%		52%			60%		



	Jan	Feb	Mar	Apr	May	Jun	Jul	Aug	Sep	Oct	Nov	Dec
# Ferritin	83			83	31		81			85		
# Ferritin 800 to 1200	20			28	7		29			28		
Pop. Mean	735			870	639		781			725		
Std. Deviation	422			467	348		328			340		
% Ferritin 800 to 1200	24%			34%	23%		36%			33%		



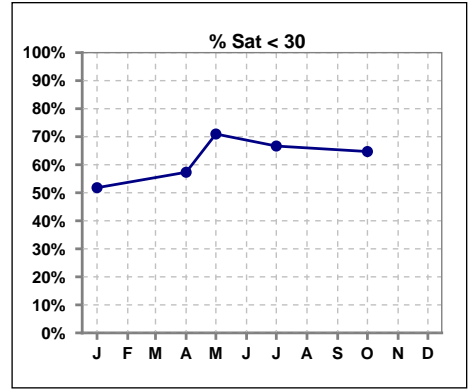
	Jan	Feb	Mar	Apr	May	Jun	Jul	Aug	Sep	Oct	Nov	Dec
# Ferritin	83			83	31		81			85		
# Ferritin > 1200	8			16	2		10			6		
Pop. Mean	735			870	639		781			725		
Std. Deviation	422			467	348		328			340		
% Ferritin > 1200	10%			19%	6%		12%			7%		



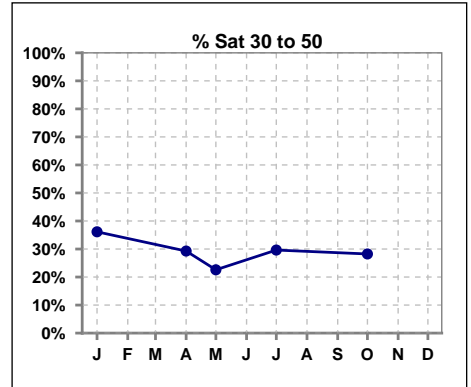
Methodology: a) All labs for 'Adequacy of Dialysis', 'Nutrition', 'Osteodystrophy', 'Anemia' and 'Diabetes' based on last value of month; b) BP's and #L processed are average of all values for month; c) Access data takes last access of month; d) Values for SGA and 'Infection Control' use most recent result.

V. ANEMIA - CONT.

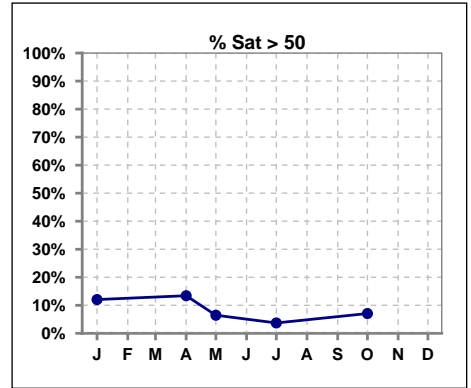
	Jan	Feb	Mar	Apr	May	Jun	Jul	Aug	Sep	Oct	Nov	Dec
# % Sat	83			82	31		81			85		
# % Sat < 30	43			47	22		54			55		
Pop. Mean	33			32	26		27			28		
Std. Deviation	16			19	13		12			15		
% % Sat < 30	52%			57%	71%		67%			65%		



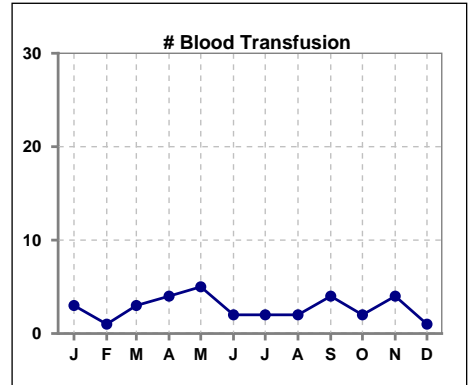
	Jan	Feb	Mar	Apr	May	Jun	Jul	Aug	Sep	Oct	Nov	Dec
# % Sat	83			82	31		81			85		
# % Sat 30 to 50	30			24	7		24			24		
Pop. Mean	33			32	26		27			28		
Std. Deviation	16			19	13		12			15		
% % Sat 30 to 50	36%			29%	23%		30%			28%		



	Jan	Feb	Mar	Apr	May	Jun	Jul	Aug	Sep	Oct	Nov	Dec
# % Sat	83			82	31		81			85		
# % Sat > 50	10			11	2		3			6		
Pop. Mean	33			32	26		27			28		
Std. Deviation	16			19	13		12			15		
% % Sat > 50	12%			13%	6%		4%			7%		



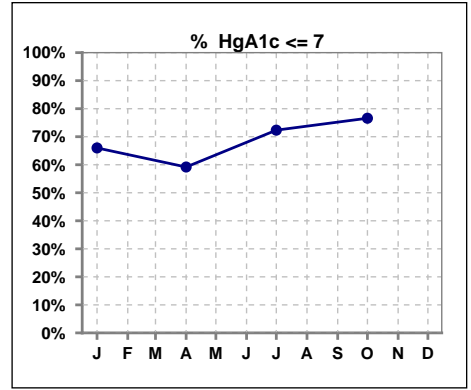
	Jan	Feb	Mar	Apr	May	Jun	Jul	Aug	Sep	Oct	Nov	Dec
# Patient	83	82	81	83	84	82	82	85	85	87	87	87
# Blood Transfusion	3	1	3	4	5	2	2	2	4	2	4	1



Methodology: a) All labs for 'Adequacy of Dialysis', 'Nutrition', 'Osteodystrophy', 'Anemia' and 'Diabetes' based on last value of month; b) BP's and #L processed are average of all values for month; c) Access data takes last access of month; d) Values for SGA and 'Infection Control' use most recent result.

VI. Diabetes

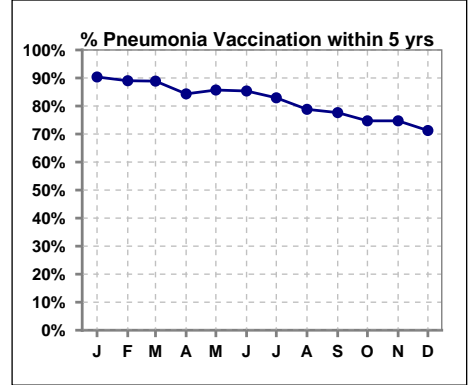
	Jan	Feb	Mar	Apr	May	Jun	Jul	Aug	Sep	Oct	Nov	Dec
# HgA1c	50			49			47			47		
# HgA1c <= 7	33			29			34			36		
Pop. Mean	6.8			6.9			6.5			6.3		
Std. Deviation	1.47			1.56			1.42			1.14		
% HgA1c <= 7	66%			59%			72%			77%		



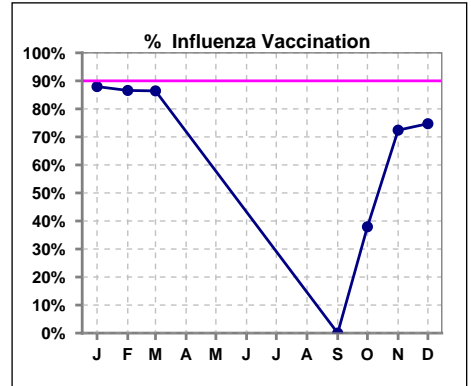
VII. Infection Control

Pneumonia vaccination within the past five years

	Jan	Feb	Mar	Apr	May	Jun	Jul	Aug	Sep	Oct	Nov	Dec
# Patient	83	82	81	83	84	82	82	85	85	87	87	87
# Pneumonia	75	73	72	70	72	70	68	67	66	65	65	62
% Pneumonia	90%	89%	89%	84%	86%	85%	83%	79%	78%	75%	75%	71%



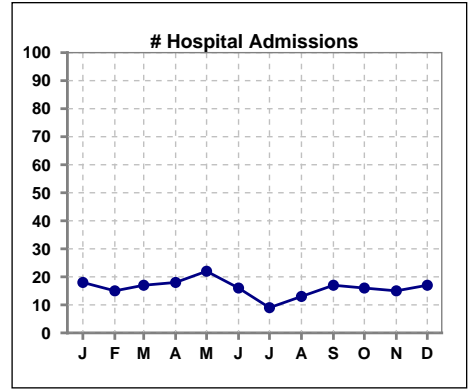
	Jan	Feb	Mar	Apr	May	Jun	Jul	Aug	Sep	Oct	Nov	Dec
# Patient	83	82	81						85	87	87	87
# Influenza	73	71	70						0	33	63	65
% Influenza	88%	87%	86%						0%	38%	72%	75%



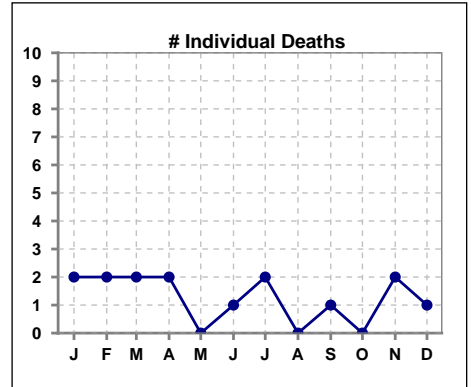
Methodology: a) All labs for 'Adequacy of Dialysis', 'Nutrition', 'Osteodystrophy', 'Anemia' and 'Diabetes' based on last value of month; b) BP's and #L processed are average of all values for month; c) Access data takes last access of month; d) Values for SGA and 'Infection Control' use most recent result.

VIII. Outcome measures

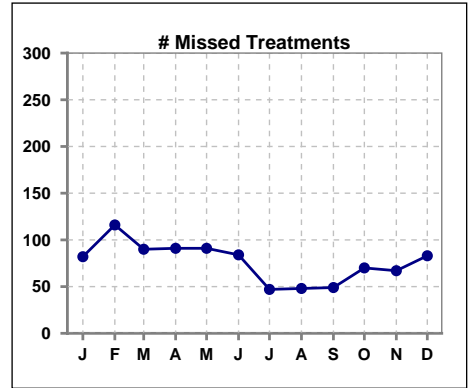
	Jan	Feb	Mar	Apr	May	Jun	Jul	Aug	Sep	Oct	Nov	Dec
# Patient	83	82	81	83	84	82	82	85	85	87	87	87
# Hospital Admissions	18	15	17	18	22	16	9	13	17	16	15	17



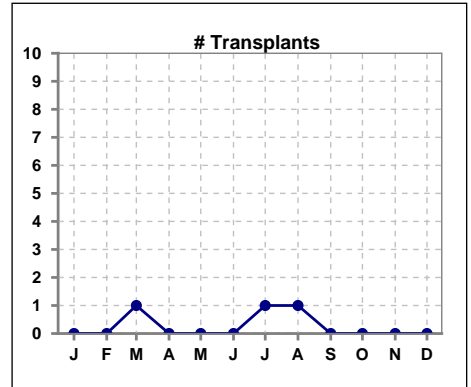
	Jan	Feb	Mar	Apr	May	Jun	Jul	Aug	Sep	Oct	Nov	Dec
# Patient	83	82	81	83	84	82	82	85	85	87	87	87
# Individual Deaths	2	2	2	2	0	1	2	0	1	0	2	1



	Jan	Feb	Mar	Apr	May	Jun	Jul	Aug	Sep	Oct	Nov	Dec
# Patient	83	82	81	83	84	82	82	85	85	87	87	87
# Missed Treatments	82	116	90	91	91	84	47	48	49	70	67	83



	Jan	Feb	Mar	Apr	May	Jun	Jul	Aug	Sep	Oct	Nov	Dec
# Patient	83	82	81	83	84	82	82	85	85	87	87	87
# Transplants	0	0	1	0	0	0	1	1	0	0	0	0



Methodology: a) All labs for 'Adequacy of Dialysis', 'Nutrition', 'Osteodystrophy', 'Anemia' and 'Diabetes' based on last value of month; b) BP's and #L processed are average of all values for month; c) Access data takes last access of month; d) Values for SGA and 'Infection Control' use most recent result.