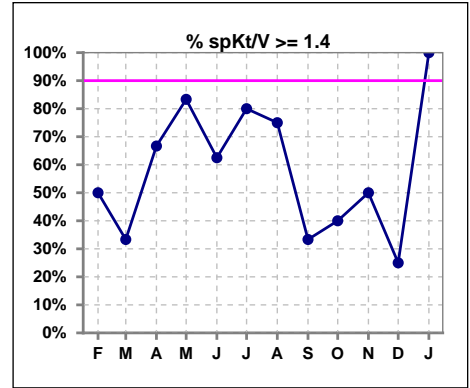
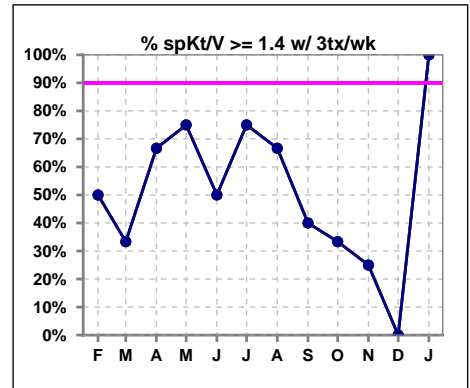


I. ADEQUACY OF DIALYSIS

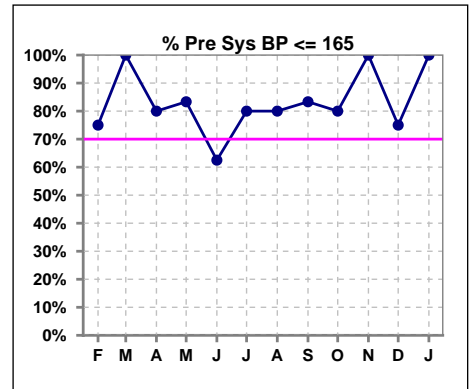
	Feb	Mar	Apr	May	Jun	Jul	Aug	Sep	Oct	Nov	Dec	Jan
# spKt/V	4	3	3	6	8	5	4	6	5	6	4	1
# spKt/V >= 1.4	2	1	2	5	5	4	3	2	2	3	1	1
Pop. Mean	1.42	1.48	1.47	1.63	1.31	1.53	1.62	1.41	1.48	1.31	1.27	1.70
Std. Deviation	0.45	0.22	0.11	0.20	0.69	0.11	0.33	0.39	0.48	0.31	0.26	0
% spKt/V >= 1.4	50%	33%	67%	83%	63%	80%	75%	33%	40%	50%	25%	100%
% spKt/V >= 1.2	75%	100%	100%	100%	75%	100%	100%	83%	80%	67%	75%	100%



	Feb	Mar	Apr	May	Jun	Jul	Aug	Sep	Oct	Nov	Dec	Jan
# spKt/V w/ 3tx/wk	4	3	3	4	6	4	3	5	3	4	2	1
# spKt/V >= 1.4 w/3tx/wk	2	1	2	3	3	3	2	2	1	1	0	1
Pop. Mean	1.42	1.48	1.47	1.56	1.13	1.51	1.63	1.50	1.28	1.19	1.09	1.70
Std. Deviation	0.45	0.22	0.11	0.22	0.70	0.12	0.40	0.36	0.44	0.32	0.19	0
% spKt/V >= 1.4 w/3tx/wk	50%	33%	67%	75%	50%	75%	67%	40%	33%	25%	0%	100%



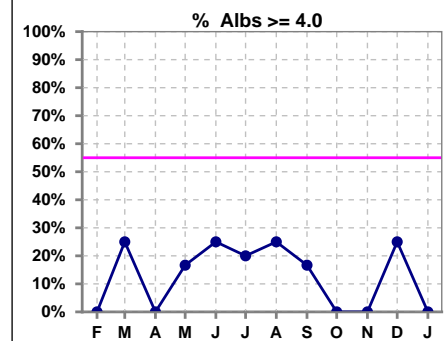
	Feb	Mar	Apr	May	Jun	Jul	Aug	Sep	Oct	Nov	Dec	Jan
# Pre Sys BP	4	4	5	6	8	5	5	6	5	6	4	1
# Pre Sys BP <= 165	3	4	4	5	6	5	4	5	4	6	3	1
Pop. Mean	147	131	148	154	153	146	147	148	148	145	150	144
Std. Deviation	24.3	19.2	11.4	14.6	13.5	12.8	20.1	14.2	16.8	14.9	21.8	0
% Pre Sys BP <= 165	75%	100%	80%	83%	63%	80%	80%	83%	80%	100%	75%	100%



*Albumin values use BCG method - as of July 2001

II. NUTRITION

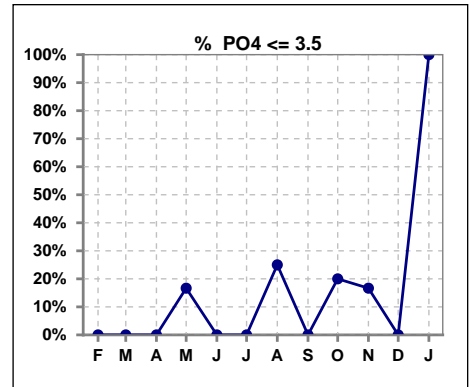
	Feb	Mar	Apr	May	Jun	Jul	Aug	Sep	Oct	Nov	Dec	Jan
# Albumin	4	4	5	6	8	5	4	6	5	6	4	1
# Albumin >= 4.0	0	1	0	1	2	1	1	1	0	0	1	0
Pop. Mean	3.4	3.5	3.4	3.5	3.4	3.4	3.8	3.5	3.1	3.3	3.4	3.7
Std. Deviation	0.28	0.56	0.23	0.44	0.58	0.41	0.37	0.43	0.61	0.53	0.71	0
% Alb >= 4.0	0%	25%	0%	17%	25%	20%	25%	17%	0%	0%	25%	0%



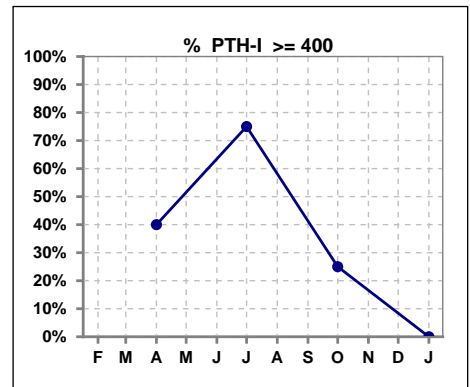
Lab methodology for PTH changed January 2012

III. OSTEODYSTROPHY

	Feb	Mar	Apr	May	Jun	Jul	Aug	Sep	Oct	Nov	Dec	Jan
# PO4	4	4	5	6	8	5	4	6	5	6	4	1
# PO4 <= 3.5	0	0	0	1	0	0	1	0	1	1	0	1
Pop. Mean	6.4	7.0	5.7	4.9	5.6	5.7	5.7	5.3	5.1	4.7	5.7	3.3
Std. Deviation	3.84	2.67	1.99	0.98	1.32	1.88	2.35	1.16	1.54	1.18	1.16	0
% PO4 <= 3.5	0%	0%	0%	17%	0%	0%	25%	0%	20%	17%	0%	100%



	Feb	Mar	Apr	May	Jun	Jul	Aug	Sep	Oct	Nov	Dec	Jan
# PTH-I			5			4			4			1
# PTH-I >= 400			2			3			1			0
Pop. Mean			509			379			277			230
Std. Deviation			351			128			152			0
% PTH-I >= 400			40%			75%			25%			0%

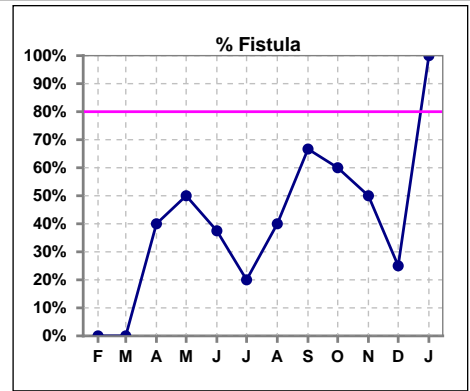


Burien Kidney Center - Center Hemodialysis
Quality Assurance Reports (Patients in first 90 days of treatment)
 Through period ending Jan. 31, 2026

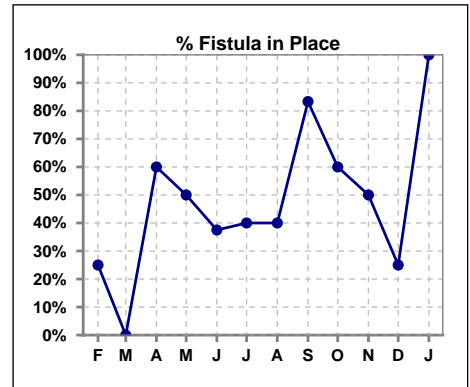
4

IV. ACCESS

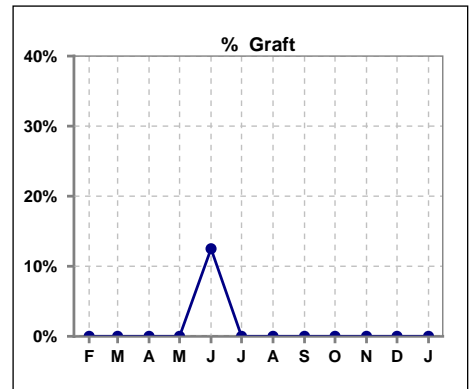
	Feb	Mar	Apr	May	Jun	Jul	Aug	Sep	Oct	Nov	Dec	Jan
# Access	4	4	5	6	8	5	5	6	5	6	4	1
# Fistula	0	0	2	3	3	1	2	4	3	3	1	1
% Fistula	0%	0%	40%	50%	38%	20%	40%	67%	60%	50%	25%	100%



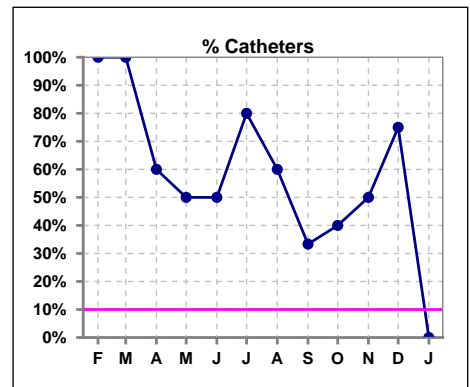
	Feb	Mar	Apr	May	Jun	Jul	Aug	Sep	Oct	Nov	Dec	Jan
# Patient	4	4	5	6	8	5	5	6	5	6	4	1
# Fistula in Place	1	0	3	3	3	2	2	5	3	3	1	1
% Fistula in Place	25%	0%	60%	50%	38%	40%	40%	83%	60%	50%	25%	100%



	Feb	Mar	Apr	May	Jun	Jul	Aug	Sep	Oct	Nov	Dec	Jan
# Access	4	4	5	6	8	5	5	6	5	6	4	1
# Graft	0	0	0	0	1	0	0	0	0	0	0	0
% Graft	0%	0%	0%	0%	13%	0%	0%	0%	0%	0%	0%	0%



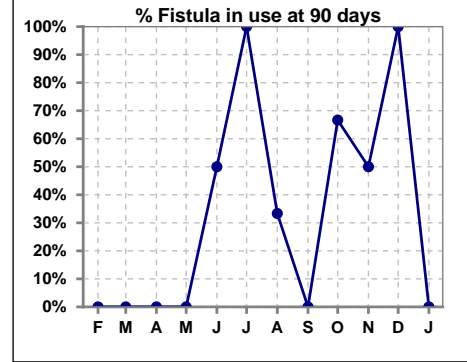
	Feb	Mar	Apr	May	Jun	Jul	Aug	Sep	Oct	Nov	Dec	Jan
# Access	4	4	5	6	8	5	5	6	5	6	4	1
# Catheters	4	4	3	3	4	4	3	2	2	3	3	0
% Catheters	100%	100%	60%	50%	50%	80%	60%	33%	40%	50%	75%	0%



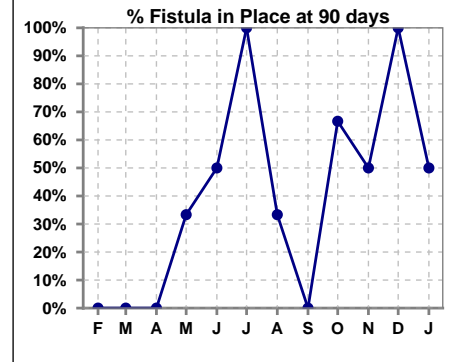
Methodology: a) All labs for 'Adequacy of Dialysis', 'Nutrition', 'Osteodystrophy', 'Anemia' and 'Diabetes' based on last value of month; b) BP's and #L processed are average of all values for month; c) Access data takes last access of month; d) Values for SGA and 'Infection Control' use most recent result.

IV. ACCESS - CONT. Access at 90 days for those patients that reached 90 days within the month.

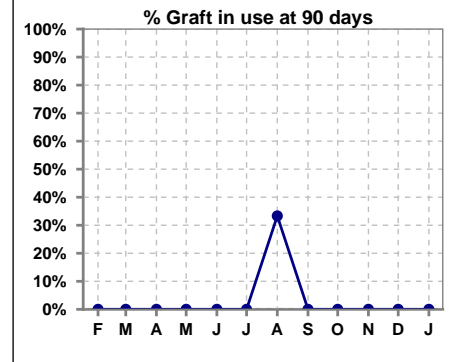
	Feb	Mar	Apr	May	Jun	Jul	Aug	Sep	Oct	Nov	Dec	Jan
# Patient	1	2	1	3	2	2	3	1	3	2	2	2
# Fistula in use	0	0	0	0	1	2	1	0	2	1	2	0
% Fistula in use	0%	0%	0%	0%	50%	100%	33%	0%	67%	50%	100%	0%



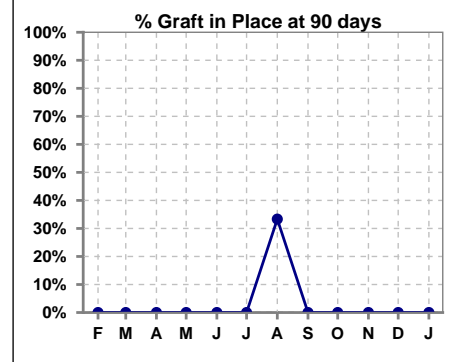
	Feb	Mar	Apr	May	Jun	Jul	Aug	Sep	Oct	Nov	Dec	Jan
# Patient	1	2	1	3	2	2	3	1	3	2	2	2
# Fistula in Place	0	0	0	1	1	2	1	0	2	1	2	1
% Fistula in Place	0%	0%	0%	33%	50%	100%	33%	0%	67%	50%	100%	50%



	Feb	Mar	Apr	May	Jun	Jul	Aug	Sep	Oct	Nov	Dec	Jan
# Patient	1	2	1	3	2	2	3	1	3	2	2	2
# Graft in use	0	0	0	0	0	0	1	0	0	0	0	0
% Graft in use	0%	0%	0%	0%	0%	0%	33%	0%	0%	0%	0%	0%

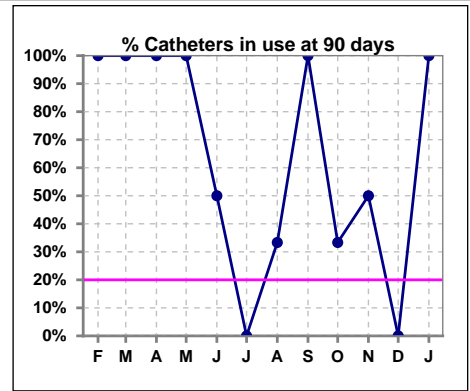


	Feb	Mar	Apr	May	Jun	Jul	Aug	Sep	Oct	Nov	Dec	Jan
# Patient	1	2	1	3	2	2	3	1	3	2	2	2
# Graft in Place	0	0	0	0	0	0	1	0	0	0	0	0
% Graft in Place	0%	0%	0%	0%	0%	0%	33%	0%	0%	0%	0%	0%

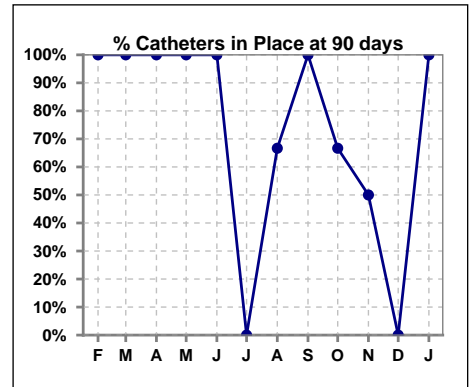


IV. ACCESS - CONT. Access at 90 days for those patients that reached 90 days within the month.

	Feb	Mar	Apr	May	Jun	Jul	Aug	Sep	Oct	Nov	Dec	Jan
# Patient	1	2	1	3	2	2	3	1	3	2	2	2
# Catheters in use	1	2	1	3	1	0	1	1	1	1	0	2
% Catheters in use	100%	100%	100%	100%	50%	0%	33%	100%	33%	50%	0%	100%

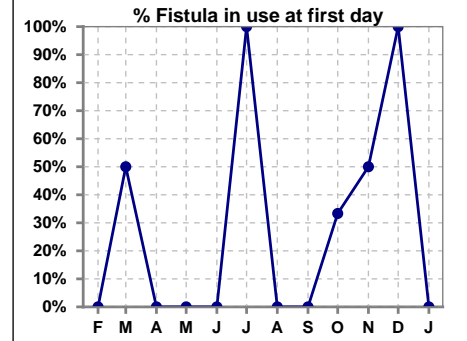


	Feb	Mar	Apr	May	Jun	Jul	Aug	Sep	Oct	Nov	Dec	Jan
# Patient	1	2	1	3	2	2	3	1	3	2	2	2
# Catheters in Place	1	2	1	3	2	0	2	1	2	1	0	2
% Catheters in Place	100%	100%	100%	100%	100%	0%	67%	100%	67%	50%	0%	100%

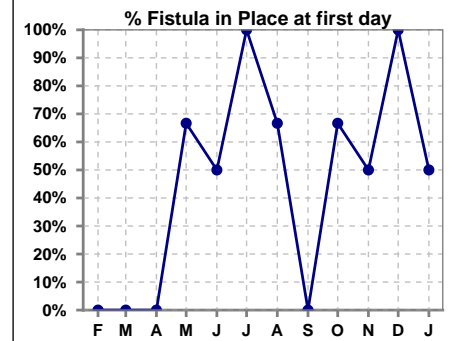


IV. ACCESS - CONT. Access at first day for those patients that reached 90 days within the month.

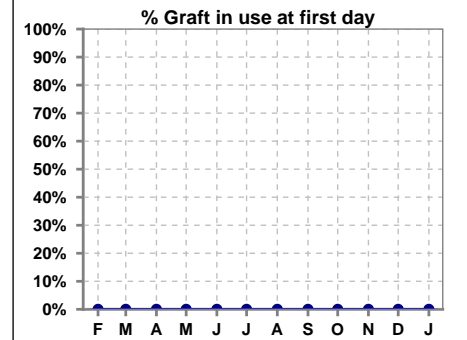
	Feb	Mar	Apr	May	Jun	Jul	Aug	Sep	Oct	Nov	Dec	Jan
# Patient	1	2	1	3	2	2	3	1	3	2	2	2
# Fistula in use	0	1	0	0	0	2	0	0	1	1	2	0
% Fistula in use	0%	50%	0%	0%	0%	100%	0%	0%	33%	50%	100%	0%



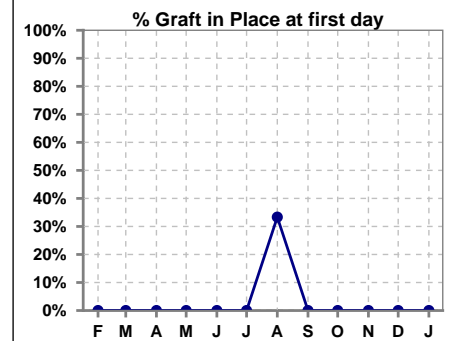
	Feb	Mar	Apr	May	Jun	Jul	Aug	Sep	Oct	Nov	Dec	Jan
# Patient	1	2	1	3	2	2	3	1	3	2	2	2
# Fistula in Place	0	0	0	2	1	2	2	0	2	1	2	1
% Fistula in Place	0%	0%	0%	67%	50%	100%	67%	0%	67%	50%	100%	50%



	Feb	Mar	Apr	May	Jun	Jul	Aug	Sep	Oct	Nov	Dec	Jan
# Patient	1	2	1	3	2	2	3	1	3	2	2	2
# Graft in use	0	0	0	0	0	0	0	0	0	0	0	0
% Graft in use	0%	0%	0%	0%	0%	0%	0%	0%	0%	0%	0%	0%

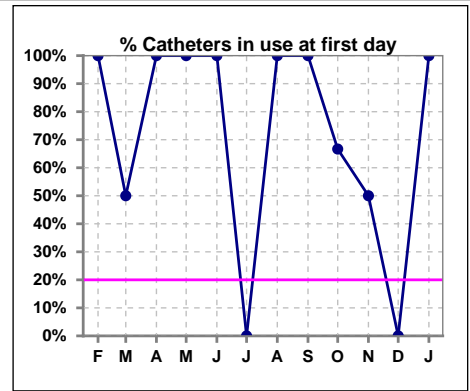


	Feb	Mar	Apr	May	Jun	Jul	Aug	Sep	Oct	Nov	Dec	Jan
# Patient	1	2	1	3	2	2	3	1	3	2	2	2
# Graft in Place	0	0	0	0	0	0	1	0	0	0	0	0
% Graft in Place	0%	0%	0%	0%	0%	0%	33%	0%	0%	0%	0%	0%

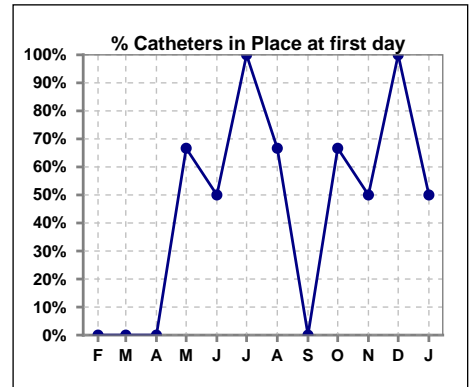


IV. ACCESS - CONT. Access at first day for those patients that reached 90 days within the month.

	Feb	Mar	Apr	May	Jun	Jul	Aug	Sep	Oct	Nov	Dec	Jan
# Patient	1	2	1	3	2	2	3	1	3	2	2	2
# Catheters in use	1	1	1	3	2	0	3	1	2	1	0	2
% Catheters in use	100%	50%	100%	100%	100%	0%	100%	100%	67%	50%	0%	100%



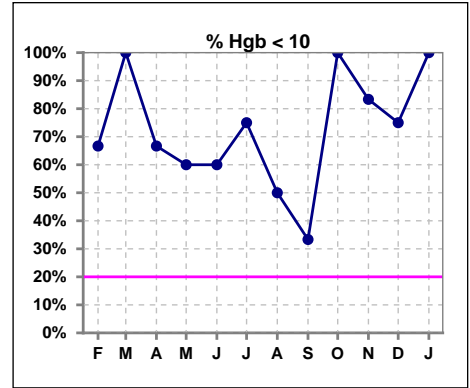
	Feb	Mar	Apr	May	Jun	Jul	Aug	Sep	Oct	Nov	Dec	Jan
# Patient	1	2	1	3	2	2	3	1	3	2	2	2
# Catheters in Place	0	0	0	2	1	2	2	0	2	1	2	1
% Catheters in Place	0%	0%	0%	67%	50%	100%	67%	0%	67%	50%	100%	50%



V. ANEMIA

	Feb	Mar	Apr	May	Jun	Jul	Aug	Sep	Oct	Nov	Dec	Jan
# Hgb	3	3	3	5	5	4	2	3	4	6	4	1
# Hgb <= 10	2	3	2	3	3	3	1	1	4	5	3	1
Pop. Mean	9.1	8.1	9.4	9.3	9.1	9.1	9.3	9.8	8.4	9.0	10.3	8.9
Std. Deviation	1.3	0.7	0.9	1.1	1.5	1.6	2.4	2.0	1.5	0.9	2.1	0
% Hgb <= 10	67%	100%	67%	60%	60%	75%	50%	33%	100%	83%	75%	100%

Note: Excludes patients who received no ESA in month.



	Feb	Mar	Apr	May	Jun	Jul	Aug	Sep	Oct	Nov	Dec	Jan
# Hgb	3	3	3	5	5	4	2	3	4	6	4	1
# Hgb >= 12	0	0	0	0	0	0	0	0	0	0	1	0
Pop. Mean	9.1	8.1	9.4	9.3	9.1	9.1	9.3	9.8	8.4	9.0	10.3	8.9
Std. Deviation	1.3	0.7	0.9	1.1	1.5	1.6	2.4	2.0	1.5	0.9	2.1	0
% Hgb >= 12	0%	0%	0%	0%	0%	0%	0%	0%	0%	0%	25%	0%

Note: Excludes patients who received no ESA in month.

