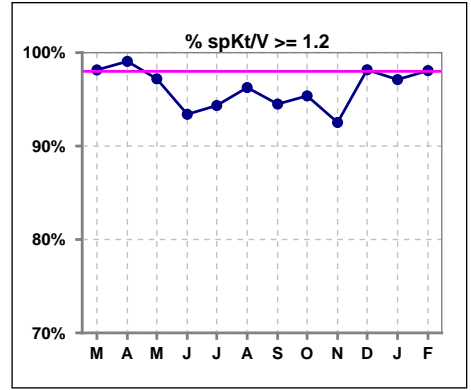
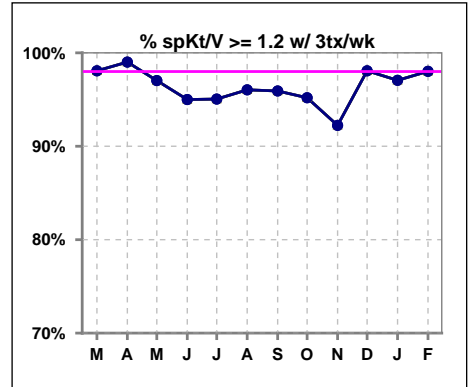


I. ADEQUACY OF DIALYSIS

	Mar	Apr	May	Jun	Jul	Aug	Sep	Oct	Nov	Dec	Jan	Feb
# spKt/V	108	107	107	106	106	107	109	108	107	109	104	104
# spKt/V >= 1.2	106	106	104	99	100	103	103	103	99	107	101	102
Pop. Mean	1.74	1.64	1.58	1.58	1.61	1.58	1.60	1.63	1.64	1.64	1.62	1.63
Std. Deviation	0.46	0.29	0.33	0.32	0.35	0.32	0.35	0.33	0.34	0.31	0.33	0.32
% spKt/V >= 1.2	98%	99%	97%	93%	94%	96%	94%	95%	93%	98%	97%	98%

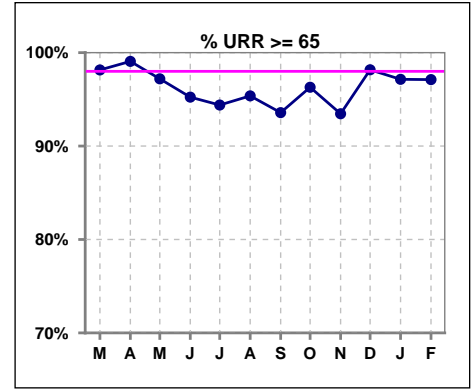


	Mar	Apr	May	Jun	Jul	Aug	Sep	Oct	Nov	Dec	Jan	Feb
# spKt/V w/ 3tx/wk	104	101	101	100	101	101	98	104	103	104	102	101
# spKt/V >= 1.2 w/3tx/wk	102	100	98	95	96	97	94	99	95	102	99	99
Pop. Mean	1.74	1.64	1.58	1.60	1.61	1.58	1.62	1.63	1.63	1.64	1.62	1.62
Std. Deviation	0.46	0.29	0.33	0.30	0.33	0.31	0.34	0.32	0.33	0.31	0.33	0.31
% >= 1.2 w/3tx/wk	98%	99%	97%	95%	95%	96%	96%	95%	92%	98%	97%	98%

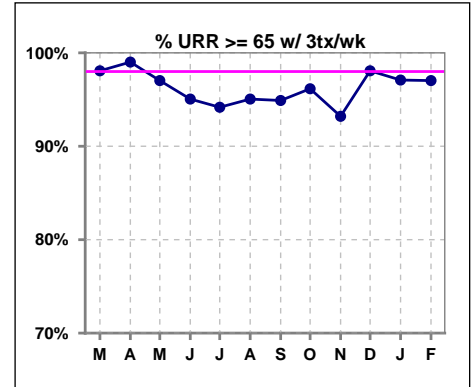


I. ADEQUACY OF DIALYSIS - CONT.

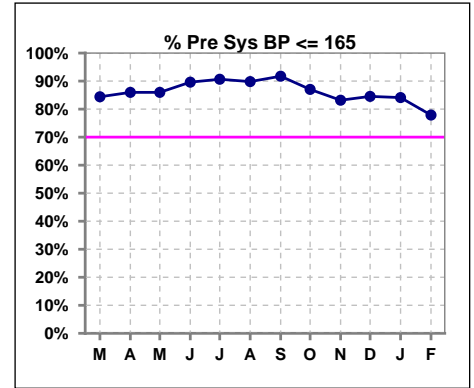
	Mar	Apr	May	Jun	Jul	Aug	Sep	Oct	Nov	Dec	Jan	Feb
# URR	108	107	107	105	107	108	109	108	107	109	105	104
# URR >= 65	106	106	104	100	101	103	102	104	100	107	102	101
Pop. Mean	77	75	74	74	75	74	74	75	75	75	75	75
Std. Deviation	6.61	5.59	9.25	6.49	7.11	6.58	7.40	6.55	6.37	5.71	6.44	6.23
% URR >= 65	98%	99%	97%	95%	94%	95%	94%	96%	93%	98%	97%	97%



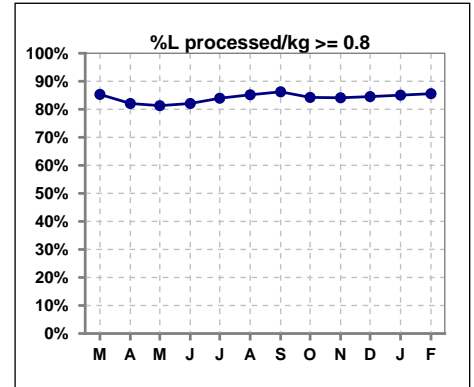
	Mar	Apr	May	Jun	Jul	Aug	Sep	Oct	Nov	Dec	Jan	Feb
# URR w/ 3tx/wk	104	101	101	101	103	101	98	104	103	104	103	101
# URR>=65 w/ 3tx/wk	102	100	98	96	97	96	93	100	96	102	100	98
Pop. Mean	77	75	73	74	75	74	75	75	75	75	75	75
Std. Deviation	6.61	5.59	9.40	6.56	7.04	6.53	7.14	6.51	6.34	5.76	6.45	6.19
% URR>=65 w/ 3tx/wk	98%	99%	97%	95%	94%	95%	95%	96%	93%	98%	97%	97%



	Mar	Apr	May	Jun	Jul	Aug	Sep	Oct	Nov	Dec	Jan	Feb
# Pre Sys BP	109	107	107	106	107	108	109	108	107	110	107	104
# Pre Sys BP <= 165	94	93	93	96	98	97	100	95	92	93	90	84
Pop. Mean	148	146	146	144	141	142	143	145	146	146	146	146
Std. Deviation	19.4	18.2	18.6	19.5	16.6	17.4	17.5	17.8	18.7	17.4	17.9	19.4
%Pre Sys BP <=165	84%	86%	86%	90%	91%	90%	92%	87%	83%	85%	84%	78%



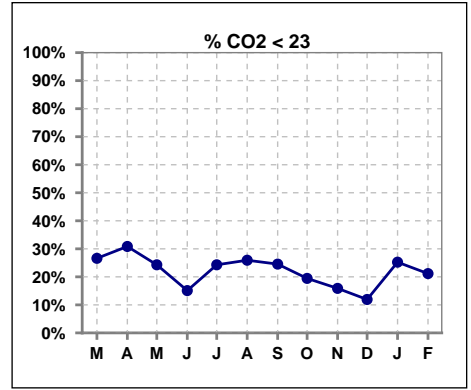
	Mar	Apr	May	Jun	Jul	Aug	Sep	Oct	Nov	Dec	Jan	Feb
# L processed/kg	109	106	107	106	106	108	109	108	107	110	107	104
# L processed/kg>=0.8	93	87	87	87	89	92	94	91	90	93	91	89
Pop. Mean	1	1	1	1	1	1	1	1	1	1	1	1
Std. Deviation	0.2	0.3	0.3	0.3	0.3	0.3	0.3	0.3	0.3	0.3	0.3	0.3
% L processed/kg>=0.8	85%	82%	81%	82%	84%	85%	86%	84%	84%	85%	85%	86%



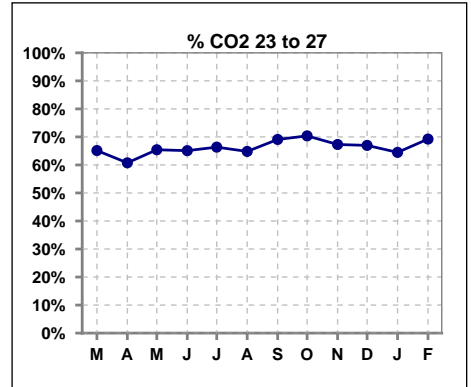
Methodology: a) All labs for 'Adequacy of Dialysis', 'Nutrition', 'Osteodystrophy', 'Anemia' and 'Diabetes' based on last value of month; b) BP's and #L processed are average of all values for month; c) Access data takes last access of month; d) Values for SGA and 'Infection Control' use most recent result.

I. ADEQUACY OF DIALYSIS - CONT.

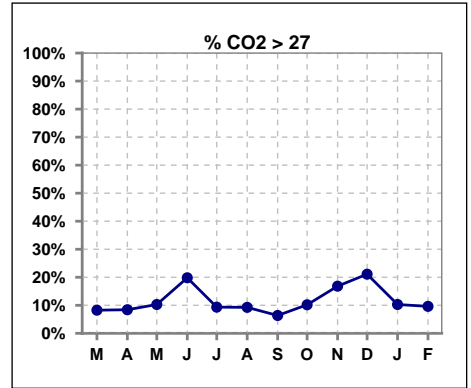
	Mar	Apr	May	Jun	Jul	Aug	Sep	Oct	Nov	Dec	Jan	Feb
# CO2	109	107	107	106	107	108	110	108	107	109	107	104
# CO2 < 23	29	33	26	16	26	28	27	21	17	13	27	22
Pop. Mean	24	24	24	25	24	24	24	25	25	25	24	24
Std. Deviation	2.69	2.55	2.94	2.71	2.89	3.07	2.72	2.82	2.76	2.77	2.56	2.90
% CO2 < 23	27%	31%	24%	15%	24%	26%	25%	19%	16%	12%	25%	21%



	Mar	Apr	May	Jun	Jul	Aug	Sep	Oct	Nov	Dec	Jan	Feb
# CO2	109	107	107	106	107	108	110	108	107	109	107	104
# CO2 23 to 27	71	65	70	69	71	70	76	76	72	73	69	72
Pop. Mean	24	24	24	25	24	24	24	25	25	25	24	24
Std. Deviation	2.69	2.55	2.94	2.71	2.89	3.07	2.72	2.82	2.76	2.77	2.56	2.90
% CO2 23 to 27	65%	61%	65%	65%	66%	65%	69%	70%	67%	67%	64%	69%



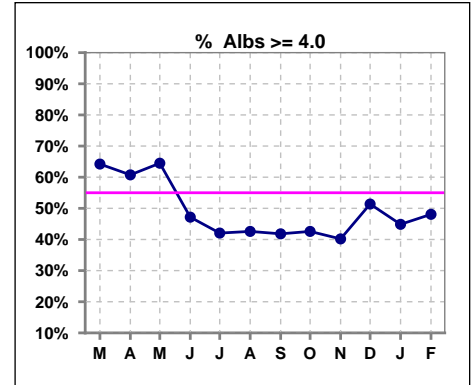
	Mar	Apr	May	Jun	Jul	Aug	Sep	Oct	Nov	Dec	Jan	Feb
# CO2	109	107	107	106	107	108	110	108	107	109	107	104
# CO2 > 27	9	9	11	21	10	10	7	11	18	23	11	10
Pop. Mean	24	24	24	25	24	24	24	25	25	25	24	24
Std. Deviation	2.69	2.55	2.94	2.71	2.89	3.07	2.72	2.82	2.76	2.77	2.56	2.90
% CO2 > 27	8%	8%	10%	20%	9%	9%	6%	10%	17%	21%	10%	10%



*Albumin values use BCG method - as of July 2001

II. NUTRITION

	Mar	Apr	May	Jun	Jul	Aug	Sep	Oct	Nov	Dec	Jan	Feb
# Albumin	109	107	107	106	107	108	110	108	107	109	107	104
# Albumin >= 4.0	70	65	69	50	45	46	46	46	43	56	48	50
Pop. Mean	4.0	4.0	4.0	3.9	3.9	3.8	3.8	3.8	3.8	3.9	3.9	3.9
Std. Deviation	0.37	0.36	0.37	0.44	0.44	0.43	0.47	0.48	0.45	0.51	0.45	0.43
% Alb >= 4.0	64%	61%	64%	47%	42%	43%	42%	43%	40%	51%	45%	48%

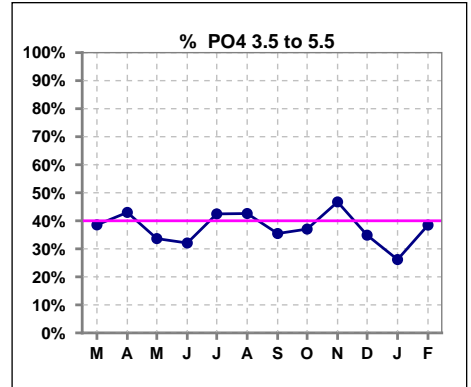


Methodology: a) All labs for 'Adequacy of Dialysis', 'Nutrition', 'Osteodystrophy', 'Anemia' and 'Diabetes' based on last value of month; b) BP's and #L processed are average of all values for month; c) Access data takes last access of month; d) Values for SGA and 'Infection Control' use most recent result.

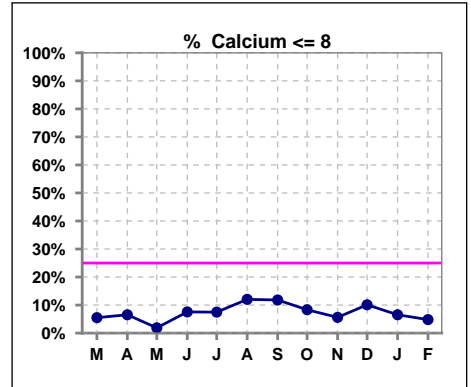
Lab methodology for PTH changed January 2012

III. OSTEODYSTROPHY

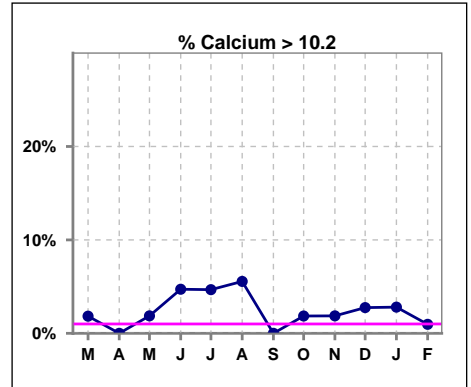
	Mar	Apr	May	Jun	Jul	Aug	Sep	Oct	Nov	Dec	Jan	Feb
# PO4	109	107	107	106	106	108	110	108	107	109	107	104
# PO4 3.5 to 5.5	42	46	36	34	45	46	39	40	50	38	28	40
Pop. Mean	5.9	5.8	6.1	6.3	6.1	5.9	5.9	6.0	5.8	6.2	6.1	6.1
Std. Deviation	1.85	1.88	2.03	2.13	2.05	2.02	1.78	1.81	2.06	2.06	1.81	2.06
% PO4 3.5 to 5.5	39%	43%	34%	32%	42%	43%	35%	37%	47%	35%	26%	38%



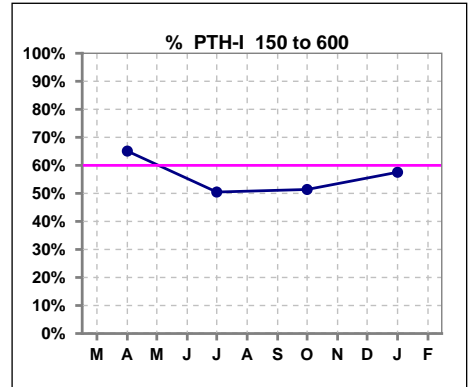
	Mar	Apr	May	Jun	Jul	Aug	Sep	Oct	Nov	Dec	Jan	Feb
# Calcium	109	107	107	106	107	108	110	108	107	109	107	104
# Calcium <= 8	6	7	2	8	8	13	13	9	6	11	7	5
Pop. Mean	9.2	9.1	9.3	9.2	9.1	9.0	8.9	8.9	9.1	9.1	9.0	9.1
Std. Deviation	0.62	0.63	0.59	0.76	0.89	0.75	0.66	0.69	0.70	0.73	0.70	0.66
% Calcium <= 8	6%	7%	2%	8%	7%	12%	12%	8%	6%	10%	7%	5%



	Mar	Apr	May	Jun	Jul	Aug	Sep	Oct	Nov	Dec	Jan	Feb
# Calcium	109	107	107	106	107	108	110	108	107	109	107	104
# Calcium > 10.2	2	0	2	5	5	6	0	2	2	3	3	1
Pop. Mean	9.2	9.1	9.3	9.2	9.1	9.0	8.9	8.9	9.1	9.1	9.0	9.1
Std. Deviation	0.62	0.63	0.59	0.76	0.89	0.75	0.66	0.69	0.70	0.73	0.70	0.66
% Calcium > 10.2	2%	0%	2%	5%	5%	6%	0%	2%	2%	3%	3%	1%



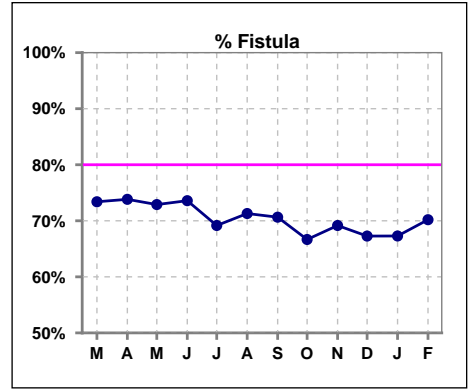
	Mar	Apr	May	Jun	Jul	Aug	Sep	Oct	Nov	Dec	Jan	Feb
# PTH-I		106			105			107			106	
# PTH-I 150 to 600		69			53			55			61	
Pop. Mean		456			631			591			528	
Std. Deviation		335			516			429			546	
% PTH-I 150 to 600		65%			50%			51%			58%	



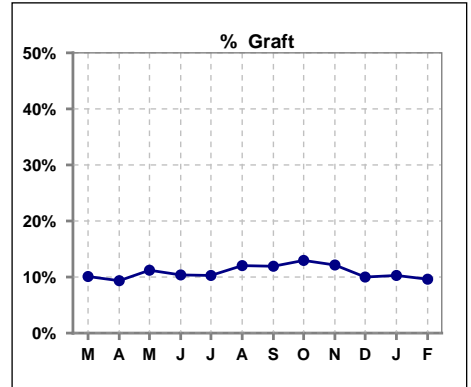
Methodology: a) All labs for 'Adequacy of Dialysis', 'Nutrition', 'Osteodystrophy', 'Anemia' and 'Diabetes' based on last value of month; b) BP's and #L processed are average of all values for month; c) Access data takes last access of month; d) Values for SGA and 'Infection Control' use most recent result.

IV. ACCESS

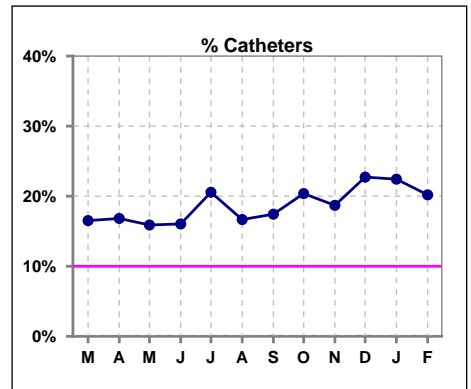
	Mar	Apr	May	Jun	Jul	Aug	Sep	Oct	Nov	Dec	Jan	Feb
# Access	109	107	107	106	107	108	109	108	107	110	107	104
# Fistula	80	79	78	78	74	77	77	72	74	74	72	73
% Fistula	73%	74%	73%	74%	69%	71%	71%	67%	69%	67%	67%	70%



	Mar	Apr	May	Jun	Jul	Aug	Sep	Oct	Nov	Dec	Jan	Feb
# Access	109	107	107	106	107	108	109	108	107	110	107	104
# Graft	11	10	12	11	11	13	13	14	13	11	11	10
% Graft	10%	9%	11%	10%	10%	12%	12%	13%	12%	10%	10%	10%



	Mar	Apr	May	Jun	Jul	Aug	Sep	Oct	Nov	Dec	Jan	Feb
# Access	109	107	107	106	107	108	109	108	107	110	107	104
# Catheters	18	18	17	17	22	18	19	22	20	25	24	21
% Catheters	17%	17%	16%	16%	21%	17%	17%	20%	19%	23%	22%	20%



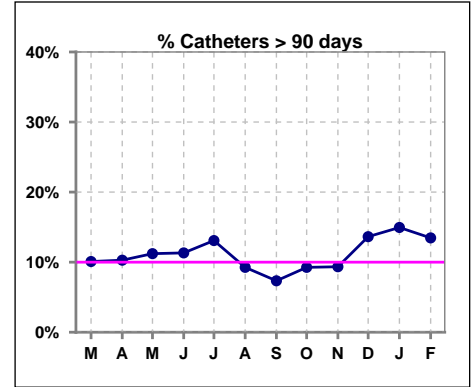
Methodology: a) All labs for 'Adequacy of Dialysis', 'Nutrition', 'Osteodystrophy', 'Anemia' and 'Diabetes' based on last value of month; b) BP's and #L processed are average of all values for month; c) Access data takes last access of month; d) Values for SGA and 'Infection Control' use most recent result.

IV. ACCESS - CONT.

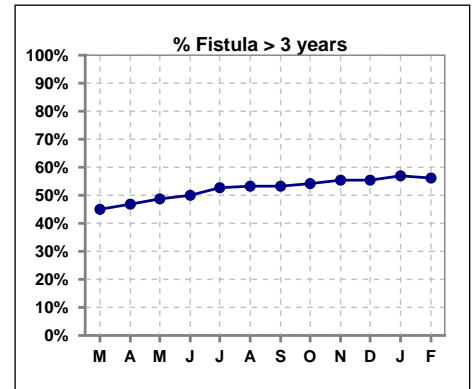
Catheters > 90 days

	Mar	Apr	May	Jun	Jul	Aug	Sep	Oct	Nov	Dec	Jan	Feb
# Access	109	107	107	106	107	108	109	108	107	110	107	104
# Catheters	11	11	12	12	14	10	8	10	10	15	16	14
% Catheters	10%	10%	11%	11%	13%	9%	7%	9%	9%	14%	15%	13%

Definition: Catheter in use on last treatment of the month



	Mar	Apr	May	Jun	Jul	Aug	Sep	Oct	Nov	Dec	Jan	Feb
# Fistula	80	79	78	78	74	77	77	72	74	74	72	73
# Fistula > 3 yrs	36	37	38	39	39	41	41	39	41	41	41	41
% Fistula > 3 yrs	45%	47%	49%	50%	53%	53%	53%	54%	55%	55%	57%	56%

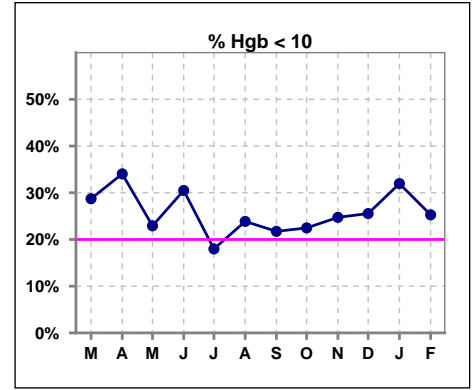


Methodology: a) All labs for 'Adequacy of Dialysis', 'Nutrition', 'Osteodystrophy', 'Anemia' and 'Diabetes' based on last value of month; b) BP's and #L processed are average of all values for month; c) Access data takes last access of month; d) Values for SGA and 'Infection Control' use most recent result.

V. ANEMIA

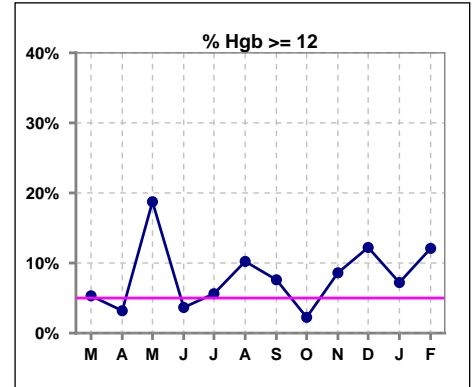
	Mar	Apr	May	Jun	Jul	Aug	Sep	Oct	Nov	Dec	Jan	Feb
# Hgb	94	94	96	82	89	88	92	89	93	90	97	91
# Hgb < 10	27	32	22	25	16	21	20	20	23	23	31	23
Pop. Mean	10.6	10.5	10.9	10.5	10.9	10.7	10.6	10.5	10.6	10.6	10.4	10.8
Std. Deviation	1.3	1.2	1.5	1.3	1.1	1.3	1.3	1.3	1.3	1.4	1.4	1.4
% Hgb < 10	29%	34%	23%	30%	18%	24%	22%	22%	25%	26%	32%	25%

Note: Excludes patients who received no ESA in month.



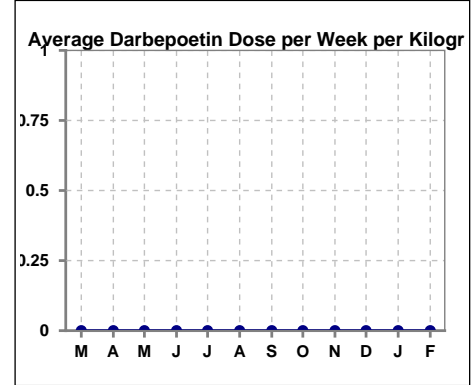
	Mar	Apr	May	Jun	Jul	Aug	Sep	Oct	Nov	Dec	Jan	Feb
# Hgb	94	94	96	82	89	88	92	89	93	90	97	91
# Hgb >= 12	5	3	18	3	5	9	7	2	8	11	7	11
Pop. Mean	10.6	10.5	10.9	10.5	10.9	10.7	10.6	10.5	10.6	10.6	10.4	10.8
Std. Deviation	1.3	1.2	1.5	1.3	1.1	1.3	1.3	1.3	1.3	1.4	1.4	1.4
% Hgb >= 12	5%	3%	19%	4%	6%	10%	8%	2%	9%	12%	7%	12%

Note: Excludes patients who received no ESA in month.



Average Darbepoetin Dose per Week per Kilogram

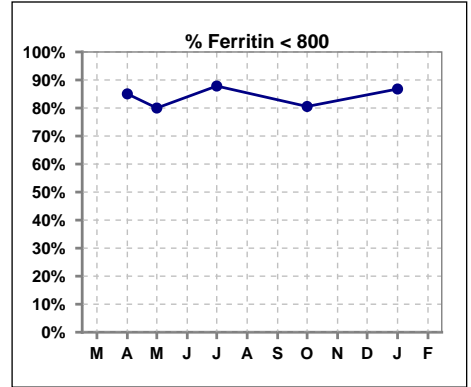
	Mar	Apr	May	Jun	Jul	Aug	Sep	Oct	Nov	Dec	Jan	Feb
# Average Darbepoetin	0	0	0	0	0	0	0	0	0	0	0	0



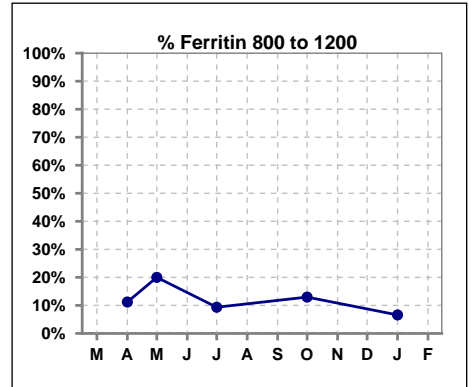
V. ANEMIA - CONT.

Iron Profile

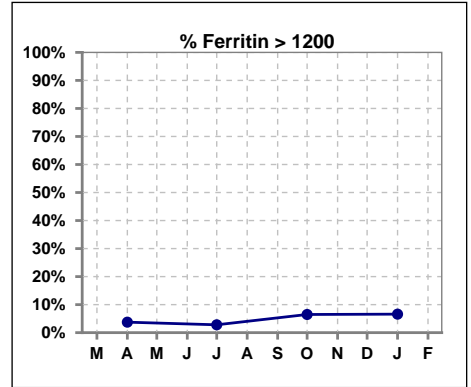
	Mar	Apr	May	Jun	Jul	Aug	Sep	Oct	Nov	Dec	Jan	Feb
# Ferritin		107	5		107			108			106	
# Ferritin < 800		91	4		94			87			92	
Pop. Mean		473	407		430			495			460	
Std. Deviation		349	280		304			418			372	
% Ferritin < 800		85%	80%		88%			81%			87%	



	Mar	Apr	May	Jun	Jul	Aug	Sep	Oct	Nov	Dec	Jan	Feb
# Ferritin		107	5		107			108			106	
# Ferritin 800 to 1200		12	1		10			14			7	
Pop. Mean		473	407		430			495			460	
Std. Deviation		349	280		304			418			372	
% Ferritin 800 to 1200		11%	20%		9%			13%			7%	



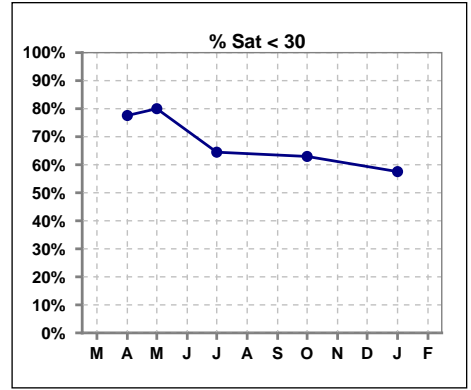
	Mar	Apr	May	Jun	Jul	Aug	Sep	Oct	Nov	Dec	Jan	Feb
# Ferritin		107	5		107			108			106	
# Ferritin > 1200		4			3			7			7	
Pop. Mean		473	407		430			495			460	
Std. Deviation		349	280		304			418			372	
% Ferritin > 1200		4%			3%			6%			7%	



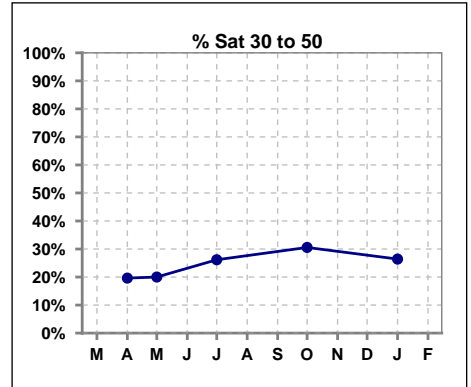
Methodology: a) All labs for 'Adequacy of Dialysis', 'Nutrition', 'Osteodystrophy', 'Anemia' and 'Diabetes' based on last value of month; b) BP's and #L processed are average of all values for month; c) Access data takes last access of month; d) Values for SGA and 'Infection Control' use most recent result.

V. ANEMIA - CONT.

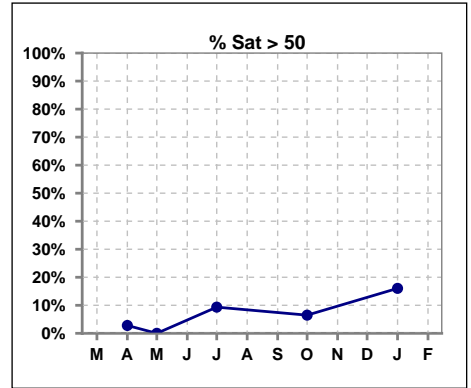
	Mar	Apr	May	Jun	Jul	Aug	Sep	Oct	Nov	Dec	Jan	Feb
# % Sat		107	5		107			108			106	
# % Sat < 30		83	4		69			68			61	
Pop. Mean		24	20		30			30			31	
Std. Deviation		11	8		16			16			16	
% % Sat < 30		78%	80%		64%			63%			58%	



	Mar	Apr	May	Jun	Jul	Aug	Sep	Oct	Nov	Dec	Jan	Feb
# % Sat		107	5		107			108			106	
# % Sat 30 to 50		21	1		28			33			28	
Pop. Mean		24	20		30			30			31	
Std. Deviation		11	8		16			16			16	
% % Sat 30 to 50		20%	20%		26%			31%			26%	



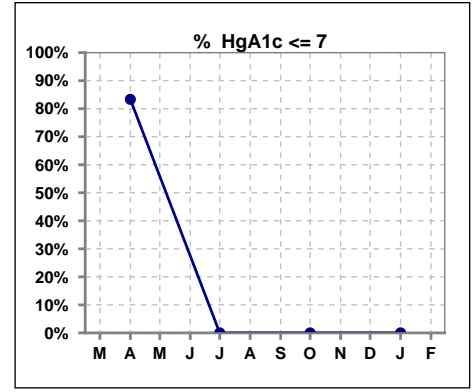
	Mar	Apr	May	Jun	Jul	Aug	Sep	Oct	Nov	Dec	Jan	Feb
# % Sat		107	5		107			108			106	
# % Sat > 50		3	0		10			7			17	
Pop. Mean		24	20		30			30			31	
Std. Deviation		11	8		16			16			16	
% % Sat > 50		3%	0%		9%			6%			16%	



Methodology: a) All labs for 'Adequacy of Dialysis', 'Nutrition', 'Osteodystrophy', 'Anemia' and 'Diabetes' based on last value of month; b) BP's and #L processed are average of all values for month; c) Access data takes last access of month; d) Values for SGA and 'Infection Control' use most recent result.

VI. Diabetes

	Mar	Apr	May	Jun	Jul	Aug	Sep	Oct	Nov	Dec	Jan	Feb
# HgA1c		60			0			0			0	
# HgA1c <= 7		50			0			0			0	
Pop. Mean		6.1			0			0			0	
Std. Deviation		1.34			0			0			0	
% HgA1c <= 7		83%			0%			0%			0%	

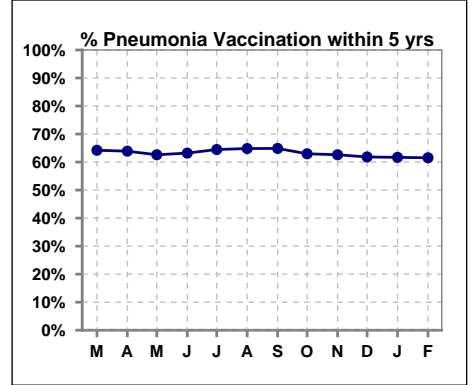


Methodology: a) All labs for 'Adequacy of Dialysis', 'Nutrition', 'Osteodystrophy', 'Anemia' and 'Diabetes' based on last value of month; b) BP's and #L processed are average of all values for month; c) Access data takes last access of month; d) Values for SGA and 'Infection Control' use most recent result.

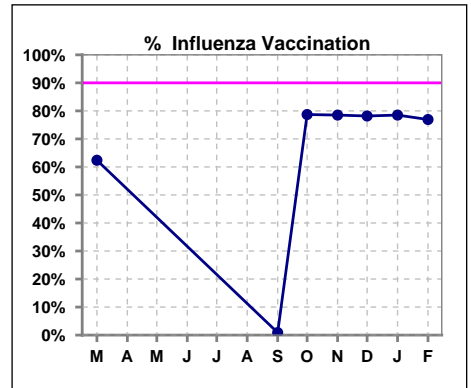
VII. Infection Control

Pneumonia vaccination within the past five years

	Mar	Apr	May	Jun	Jul	Aug	Sep	Oct	Nov	Dec	Jan	Feb
# Patient	109	108	107	106	107	108	111	108	107	110	107	104
# Pneumonia	70	69	67	67	69	70	72	68	67	68	66	64
% Pneumonia	64%	64%	63%	63%	64%	65%	65%	63%	63%	62%	62%	62%



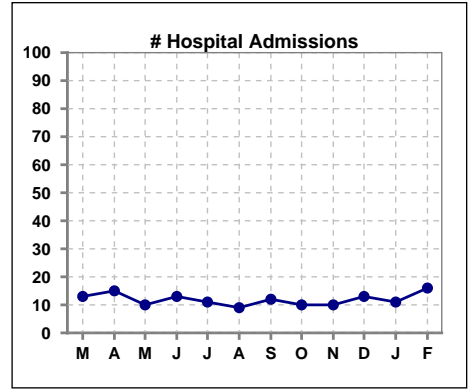
	Mar	Apr	May	Jun	Jul	Aug	Sep	Oct	Nov	Dec	Jan	Feb
# Patient	109						111	108	107	110	107	104
# Influenza	68						1	85	84	86	84	80
% Influenza	62%						1%	79%	79%	78%	79%	77%



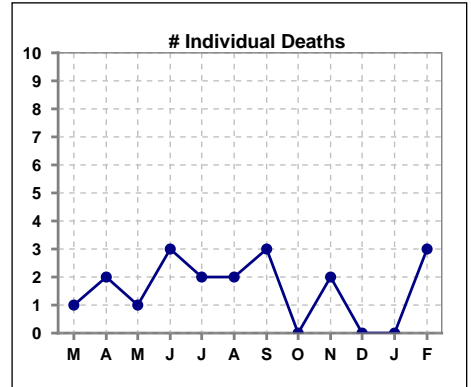
Methodology: a) All labs for 'Adequacy of Dialysis', 'Nutrition', 'Osteodystrophy', 'Anemia' and 'Diabetes' based on last value of month; b) BP's and #L processed are average of all values for month; c) Access data takes last access of month; d) Values for SGA and 'Infection Control' use most recent result.

VIII. Outcome measures

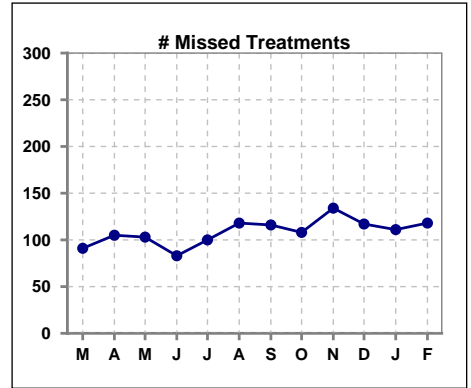
	Mar	Apr	May	Jun	Jul	Aug	Sep	Oct	Nov	Dec	Jan	Feb
# Patient	109	108	107	106	107	108	111	108	107	110	107	104
# Hospital Admissions	13	15	10	13	11	9	12	10	10	13	11	16



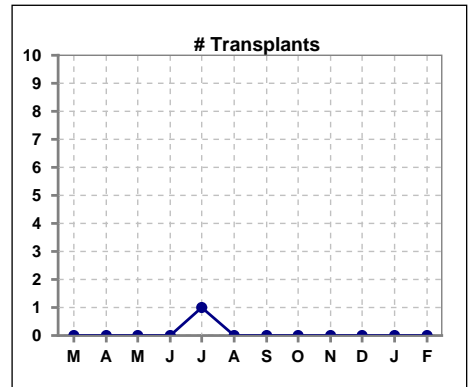
	Mar	Apr	May	Jun	Jul	Aug	Sep	Oct	Nov	Dec	Jan	Feb
# Patient	109	108	107	106	107	108	111	108	107	110	107	104
# Individual Deaths	1	2	1	3	2	2	3	0	2	0	0	3



	Mar	Apr	May	Jun	Jul	Aug	Sep	Oct	Nov	Dec	Jan	Feb
# Patient	109	108	107	106	107	108	111	108	107	110	107	104
# Missed Treatments	91	105	103	83	100	118	116	108	134	117	111	118



	Mar	Apr	May	Jun	Jul	Aug	Sep	Oct	Nov	Dec	Jan	Feb
# Patient	109	108	107	106	107	108	111	108	107	110	107	104
# Transplants	0	0	0	0	1	0	0	0	0	0	0	0



Methodology: a) All labs for 'Adequacy of Dialysis', 'Nutrition', 'Osteodystrophy', 'Anemia' and 'Diabetes' based on last value of month; b) BP's and #L processed are average of all values for month; c) Access data takes last access of month; d) Values for SGA and 'Infection Control' use most recent result.