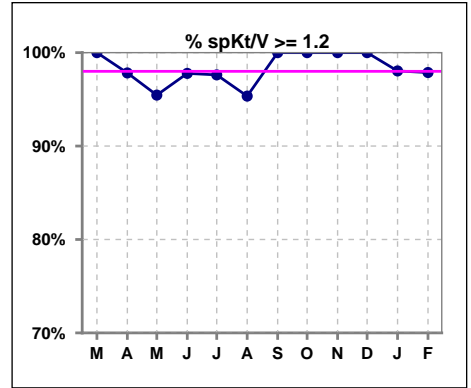
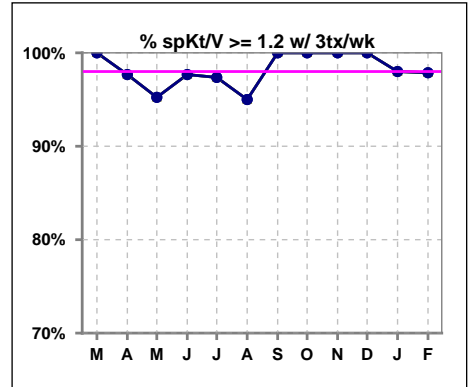


I. ADEQUACY OF DIALYSIS

	Mar	Apr	May	Jun	Jul	Aug	Sep	Oct	Nov	Dec	Jan	Feb
# spKt/V	48	46	44	45	42	43	43	46	48	52	51	47
# spKt/V >= 1.2	48	45	42	44	41	41	43	46	48	52	50	46
Pop. Mean	1.60	1.58	1.49	1.52	1.56	1.50	1.53	1.55	1.56	1.47	1.52	1.55
Std. Deviation	0.33	0.33	0.35	0.34	0.38	0.28	0.29	0.29	0.28	0.24	0.27	0.28
% spKt/V >= 1.2	100%	98%	95%	98%	98%	95%	100%	100%	100%	100%	98%	98%

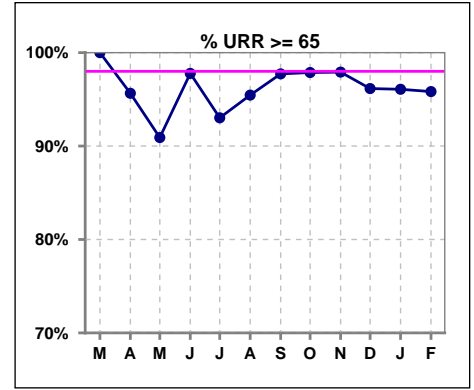


	Mar	Apr	May	Jun	Jul	Aug	Sep	Oct	Nov	Dec	Jan	Feb
# spKt/V w/ 3tx/wk	43	43	42	43	38	40	40	46	48	52	50	47
# spKt/V >= 1.2 w/3tx/wk	43	42	40	42	37	38	40	46	48	52	49	46
Pop. Mean	1.62	1.59	1.50	1.53	1.58	1.51	1.54	1.55	1.56	1.47	1.52	1.55
Std. Deviation	0.34	0.34	0.35	0.34	0.40	0.29	0.30	0.29	0.28	0.24	0.27	0.28
% >= 1.2 w/3tx/wk	100%	98%	95%	98%	97%	95%	100%	100%	100%	100%	98%	98%

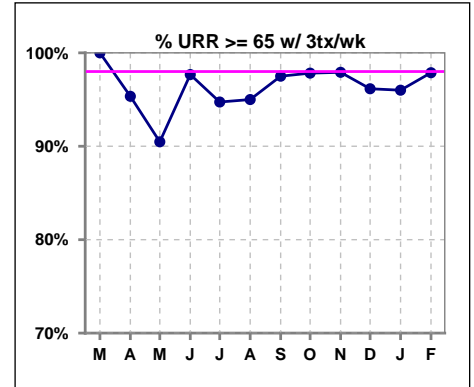


I. ADEQUACY OF DIALYSIS - CONT.

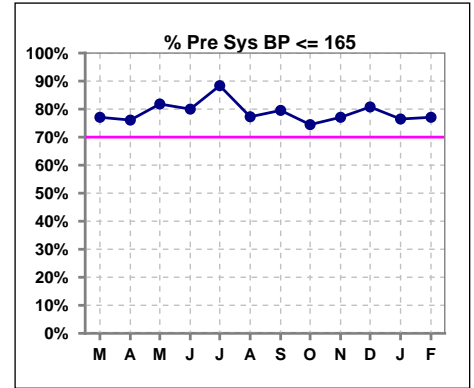
	Mar	Apr	May	Jun	Jul	Aug	Sep	Oct	Nov	Dec	Jan	Feb
# URR	48	46	44	45	43	44	44	47	48	52	51	48
# URR >= 65	48	44	40	44	40	42	43	46	47	50	49	46
Pop. Mean	74	74	71	72	73	72	73	74	74	72	73	74
Std. Deviation	6.09	6.32	7.68	7.55	7.23	5.75	6.01	5.85	5.34	5.06	5.30	5.90
% URR >= 65	100%	96%	91%	98%	93%	95%	98%	98%	98%	96%	96%	96%



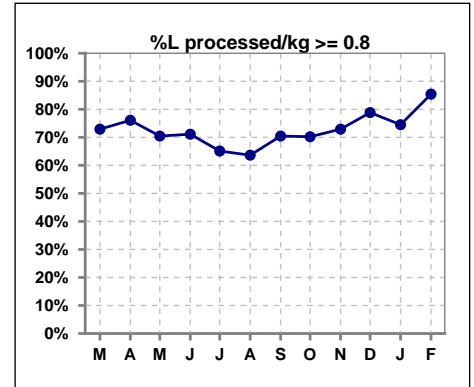
	Mar	Apr	May	Jun	Jul	Aug	Sep	Oct	Nov	Dec	Jan	Feb
# URR w/ 3tx/wk	43	43	42	43	38	40	40	46	48	52	50	47
# URR>=65 w/ 3tx/wk	43	41	38	42	36	38	39	45	47	50	48	46
Pop. Mean	74	74	72	73	74	73	73	74	74	72	73	74
Std. Deviation	6.16	6.43	7.82	7.65	7.35	5.95	6.06	5.69	5.34	5.06	5.30	5.75
% URR>=65 w/ 3tx/wk	100%	95%	90%	98%	95%	95%	98%	98%	98%	96%	96%	98%



	Mar	Apr	May	Jun	Jul	Aug	Sep	Oct	Nov	Dec	Jan	Feb
# Pre Sys BP	48	46	44	45	43	44	44	47	48	52	51	48
# Pre Sys BP <= 165	37	36	36	39	38	37	35	36	37	42	40	38
Pop. Mean	149	149	147	144	143	146	147	149	150	150	149	149
Std. Deviation	21.5	20.9	18.2	19.4	19.4	21.3	22.4	22.2	20.1	19.5	20.8	22.5
% Pre Sys BP <=165	77%	76%	82%	80%	88%	77%	80%	74%	77%	81%	76%	77%



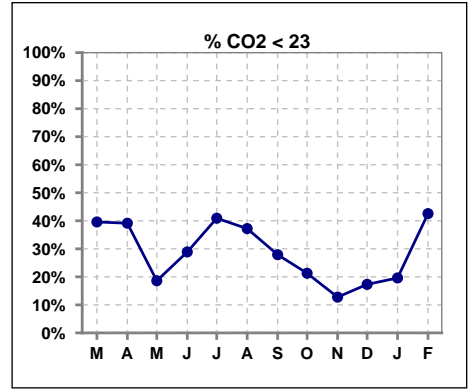
	Mar	Apr	May	Jun	Jul	Aug	Sep	Oct	Nov	Dec	Jan	Feb
# L processed/kg	48	46	44	45	43	44	44	47	48	52	51	48
# L processed/kg>=0.8	35	35	31	32	28	28	31	33	35	41	38	41
Pop. Mean	1	1	1	1	1	1	1	1	1	1	1	1
Std. Deviation	0.3	0.3	0.4	0.3	0.3	0.4	0.3	0.4	0.4	0.3	0.3	0.3
% L processed/kg>=0.8	73%	76%	70%	71%	65%	64%	70%	70%	73%	79%	75%	85%



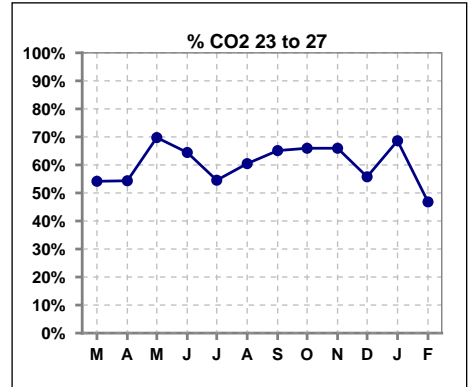
Methodology: a) All labs for 'Adequacy of Dialysis', 'Nutrition', 'Osteodystrophy', 'Anemia' and 'Diabetes' based on last value of month; b) BP's and #L processed are average of all values for month; c) Access data takes last access of month; d) Values for SGA and 'Infection Control' use most recent result.

I. ADEQUACY OF DIALYSIS - CONT.

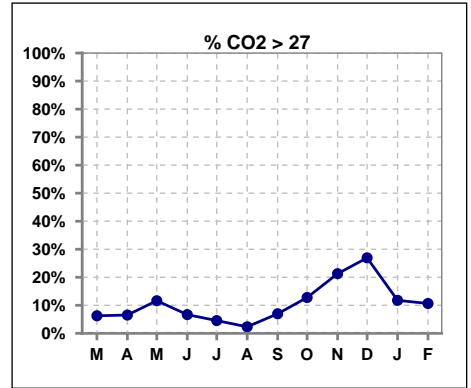
	Mar	Apr	May	Jun	Jul	Aug	Sep	Oct	Nov	Dec	Jan	Feb
# CO2	48	46	43	45	44	43	43	47	47	52	51	47
# CO2 < 23	19	18	8	13	18	16	12	10	6	9	10	20
Pop. Mean	24	23	25	24	23	23	24	24	25	25	24	24
Std. Deviation	3.11	2.93	2.81	3.52	2.88	2.32	3.10	4.10	3.00	3.38	3.93	3.23
% CO2 < 23	40%	39%	19%	29%	41%	37%	28%	21%	13%	17%	20%	43%



	Mar	Apr	May	Jun	Jul	Aug	Sep	Oct	Nov	Dec	Jan	Feb
# CO2	48	46	43	45	44	43	43	47	47	52	51	47
# CO2 23 to 27	26	25	30	29	24	26	28	31	31	29	35	22
Pop. Mean	24	23	25	24	23	23	24	24	25	25	24	24
Std. Deviation	3.11	2.93	2.81	3.52	2.88	2.32	3.10	4.10	3.00	3.38	3.93	3.23
% CO2 23 to 27	54%	54%	70%	64%	55%	60%	65%	66%	66%	56%	69%	47%



	Mar	Apr	May	Jun	Jul	Aug	Sep	Oct	Nov	Dec	Jan	Feb
# CO2	48	46	43	45	44	43	43	47	47	52	51	47
# CO2 > 27	3	3	5	3	2	1	3	6	10	14	6	5
Pop. Mean	24	23	25	24	23	23	24	24	25	25	24	24
Std. Deviation	3.11	2.93	2.81	3.52	2.88	2.32	3.10	4.10	3.00	3.38	3.93	3.23
% CO2 > 27	6%	7%	12%	7%	5%	2%	7%	13%	21%	27%	12%	11%

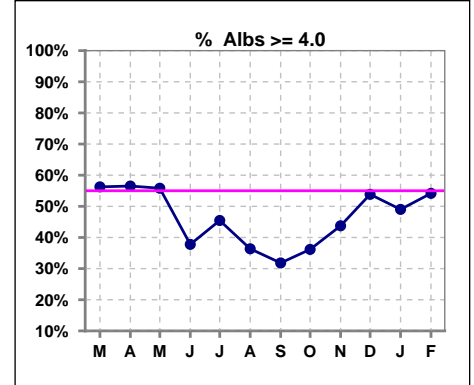


Methodology: a) All labs for 'Adequacy of Dialysis', 'Nutrition', 'Osteodystrophy', 'Anemia' and 'Diabetes' based on last value of month; b) BP's and #L processed are average of all values for month; c) Access data takes last access of month; d) Values for SGA and 'Infection Control' use most recent result.

*Albumin values use BCG method - as of July 2001

II. NUTRITION

	Mar	Apr	May	Jun	Jul	Aug	Sep	Oct	Nov	Dec	Jan	Feb
# Albumin	48	46	43	45	44	44	44	47	48	52	51	48
# Albumin >= 4.0	27	26	24	17	20	16	14	17	21	28	25	26
Pop. Mean	4.0	4.0	4.0	3.8	3.8	3.8	3.8	3.8	3.8	3.9	3.9	3.9
Std. Deviation	0.35	0.32	0.42	0.44	0.43	0.34	0.34	0.30	0.35	0.32	0.31	0.35
% Alb >= 4.0	56%	57%	56%	38%	45%	36%	32%	36%	44%	54%	49%	54%

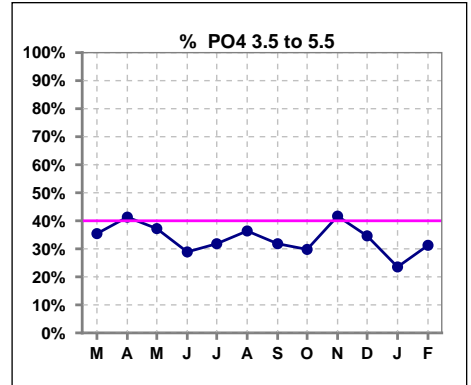


Methodology: a) All labs for 'Adequacy of Dialysis', 'Nutrition', 'Osteodystrophy', 'Anemia' and 'Diabetes' based on last value of month; b) BP's and #L processed are average of all values for month; c) Access data takes last access of month; d) Values for SGA and 'Infection Control' use most recent result.

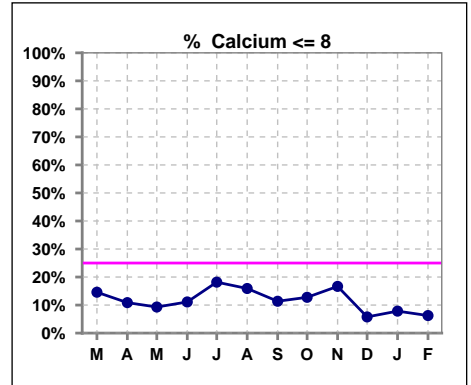
Lab methodology for PTH changed January 2012

III. OSTEODYSTROPHY

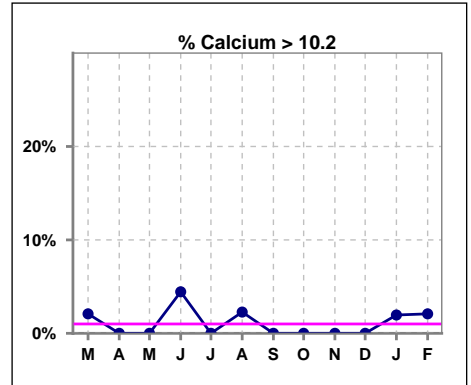
	Mar	Apr	May	Jun	Jul	Aug	Sep	Oct	Nov	Dec	Jan	Feb
# PO4	48	46	43	45	44	44	44	47	48	52	51	48
# PO4 3.5 to 5.5	17	19	16	13	14	16	14	14	20	18	12	15
Pop. Mean	6.2	6.2	6.1	6.6	6.6	6.3	5.9	6.1	6.3	6.4	6.6	6.9
Std. Deviation	1.89	1.64	1.96	2.16	2.06	2.00	1.67	1.87	2.03	1.75	1.88	2.23
% PO4 3.5 to 5.5	35%	41%	37%	29%	32%	36%	32%	30%	42%	35%	24%	31%



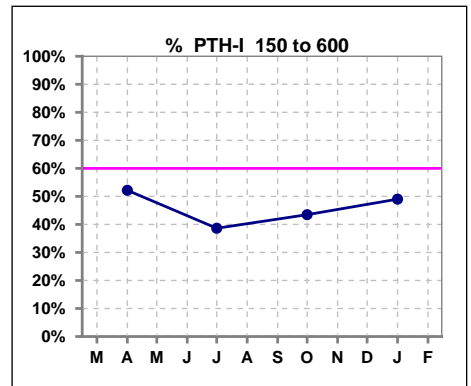
	Mar	Apr	May	Jun	Jul	Aug	Sep	Oct	Nov	Dec	Jan	Feb
# Calcium	48	46	43	45	44	44	44	47	48	52	51	48
# Calcium <= 8	7	5	4	5	8	7	5	6	8	3	4	3
Pop. Mean	9.1	9.0	9.0	9.0	8.8	8.9	8.9	8.9	9.0	9.0	9.0	9.1
Std. Deviation	0.74	0.75	0.75	0.80	0.78	0.76	0.67	0.73	0.73	0.78	0.72	0.66
% Calcium <= 8	15%	11%	9%	11%	18%	16%	11%	13%	17%	6%	8%	6%



	Mar	Apr	May	Jun	Jul	Aug	Sep	Oct	Nov	Dec	Jan	Feb
# Calcium	48	46	43	45	44	44	44	47	48	52	51	48
# Calcium > 10.2	1	0	0	2	0	1	0	0	0	0	1	1
Pop. Mean	9.1	9.0	9.0	9.0	8.8	8.9	8.9	8.9	9.0	9.0	9.0	9.1
Std. Deviation	0.74	0.75	0.75	0.80	0.78	0.76	0.67	0.73	0.73	0.78	0.72	0.66
% Calcium > 10.2	2%	0%	0%	4%	0%	2%	0%	0%	0%	0%	2%	2%



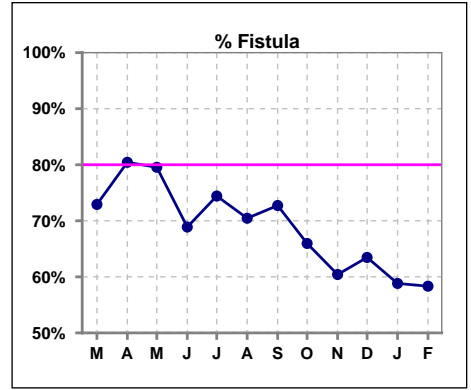
	Mar	Apr	May	Jun	Jul	Aug	Sep	Oct	Nov	Dec	Jan	Feb
# PTH-I		46			44			46			51	
# PTH-I 150 to 600		24			17			20			25	
Pop. Mean		675			783			813			718	
Std. Deviation		525			571			657			520	
% PTH-I 150 to 600		52%			39%			43%			49%	



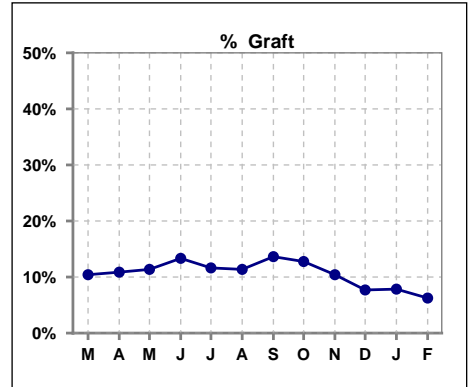
Methodology: a) All labs for 'Adequacy of Dialysis', 'Nutrition', 'Osteodystrophy', 'Anemia' and 'Diabetes' based on last value of month; b) BP's and #L processed are average of all values for month; c) Access data takes last access of month; d) Values for SGA and 'Infection Control' use most recent result.

IV. ACCESS

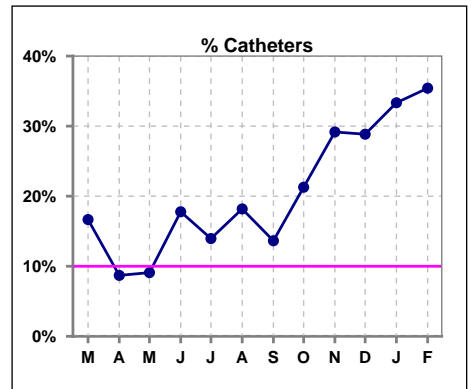
	Mar	Apr	May	Jun	Jul	Aug	Sep	Oct	Nov	Dec	Jan	Feb
# Access	48	46	44	45	43	44	44	47	48	52	51	48
# Fistula	35	37	35	31	32	31	32	31	29	33	30	28
% Fistula	73%	80%	80%	69%	74%	70%	73%	66%	60%	63%	59%	58%



	Mar	Apr	May	Jun	Jul	Aug	Sep	Oct	Nov	Dec	Jan	Feb
# Access	48	46	44	45	43	44	44	47	48	52	51	48
# Graft	5	5	5	6	5	5	6	6	5	4	4	3
% Graft	10%	11%	11%	13%	12%	11%	14%	13%	10%	8%	8%	6%



	Mar	Apr	May	Jun	Jul	Aug	Sep	Oct	Nov	Dec	Jan	Feb
# Access	48	46	44	45	43	44	44	47	48	52	51	48
# Catheters	8	4	4	8	6	8	6	10	14	15	17	17
% Catheters	17%	9%	9%	18%	14%	18%	14%	21%	29%	29%	33%	35%



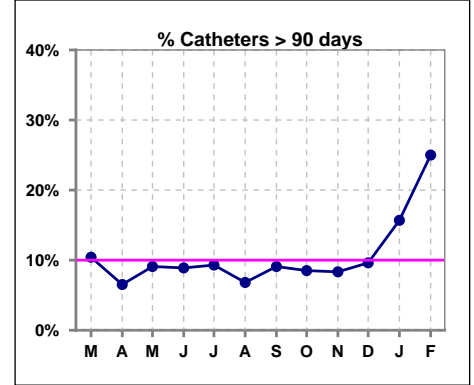
Methodology: a) All labs for 'Adequacy of Dialysis', 'Nutrition', 'Osteodystrophy', 'Anemia' and 'Diabetes' based on last value of month; b) BP's and #L processed are average of all values for month; c) Access data takes last access of month; d) Values for SGA and 'Infection Control' use most recent result.

IV. ACCESS - CONT.

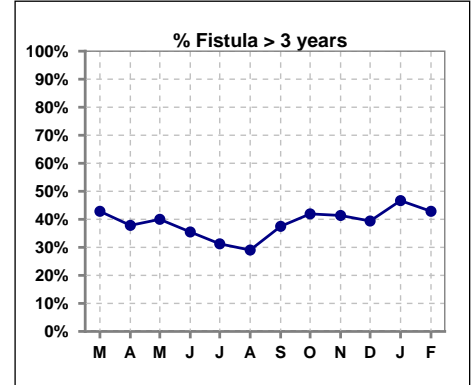
Catheters > 90 days

	Mar	Apr	May	Jun	Jul	Aug	Sep	Oct	Nov	Dec	Jan	Feb
# Access	48	46	44	45	43	44	44	47	48	52	51	48
# Catheters	5	3	4	4	4	3	4	4	4	5	8	12
% Catheters	10%	7%	9%	9%	9%	7%	9%	9%	8%	10%	16%	25%

Definition: Catheter in use on last treatment of the month



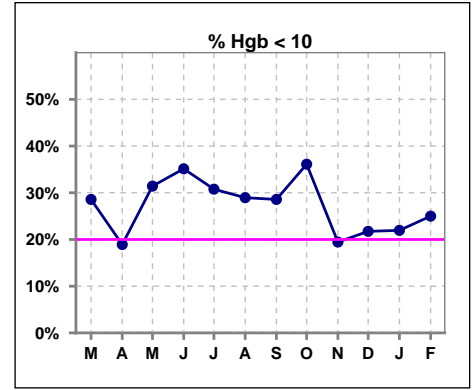
	Mar	Apr	May	Jun	Jul	Aug	Sep	Oct	Nov	Dec	Jan	Feb
# Fistula	35	37	35	31	32	31	32	31	29	33	30	28
# Fistula > 3 yrs	15	14	14	11	10	9	12	13	12	13	14	12
% Fistula > 3 yrs	43%	38%	40%	35%	31%	29%	38%	42%	41%	39%	47%	43%



V. ANEMIA

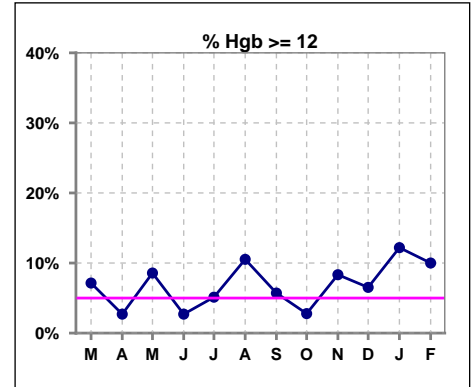
	Mar	Apr	May	Jun	Jul	Aug	Sep	Oct	Nov	Dec	Jan	Feb
# Hgb	42	37	35	37	39	38	35	36	36	46	41	40
# Hgb < 10	12	7	11	13	12	11	10	13	7	10	9	10
Pop. Mean	10.8	10.7	10.7	10.1	10.5	10.6	10.6	10.3	10.7	10.6	10.9	10.8
Std. Deviation	1.1	0.8	1.3	1.4	1.2	1.5	1.0	1.0	1.2	1.0	1.4	1.1
% Hgb < 10	29%	19%	31%	35%	31%	29%	29%	36%	19%	22%	22%	25%

Note: Excludes patients who received no ESA in month.



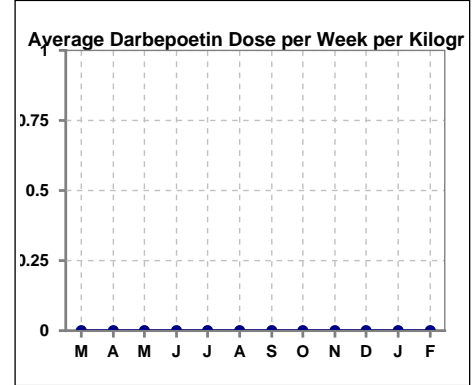
	Mar	Apr	May	Jun	Jul	Aug	Sep	Oct	Nov	Dec	Jan	Feb
# Hgb	42	37	35	37	39	38	35	36	36	46	41	40
# Hgb >= 12	3	1	3	1	2	4	2	1	3	3	5	4
Pop. Mean	10.8	10.7	10.7	10.1	10.5	10.6	10.6	10.3	10.7	10.6	10.9	10.8
Std. Deviation	1.1	0.8	1.3	1.4	1.2	1.5	1.0	1.0	1.2	1.0	1.4	1.1
% Hgb >= 12	7%	3%	9%	3%	5%	11%	6%	3%	8%	7%	12%	10%

Note: Excludes patients who received no ESA in month.



Average Darbepoetin Dose per Week per Kilogram

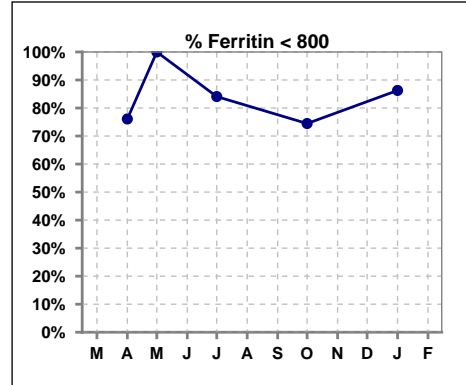
	Mar	Apr	May	Jun	Jul	Aug	Sep	Oct	Nov	Dec	Jan	Feb
# Average Darbepoetin	0	0	0	0	0	0	0	0	0	0	0	0



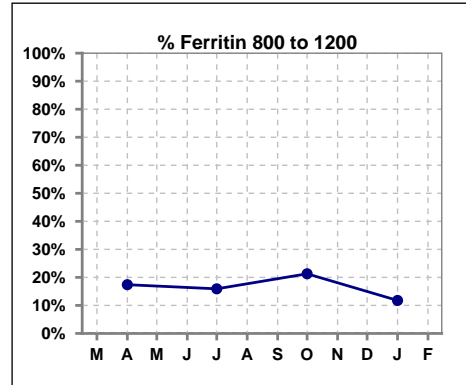
V. ANEMIA - CONT.

Iron Profile

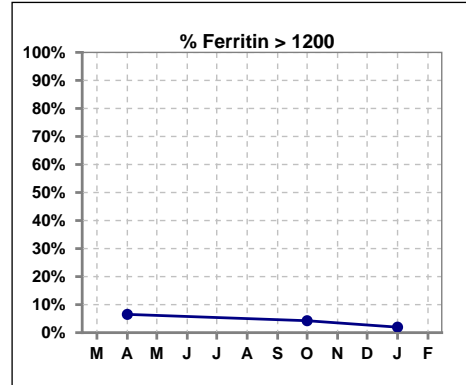
	Mar	Apr	May	Jun	Jul	Aug	Sep	Oct	Nov	Dec	Jan	Feb
# Ferritin		46	3		44			47			51	
# Ferritin < 800		35	3		37			35			44	
Pop. Mean		553	242		470			529			435	
Std. Deviation		351	171		310			352			311	
% Ferritin < 800		76%	100%		84%			74%			86%	



	Mar	Apr	May	Jun	Jul	Aug	Sep	Oct	Nov	Dec	Jan	Feb
# Ferritin		46	3		44			47			51	
# Ferritin 800 to 1200		8			7			10			6	
Pop. Mean		553	242		470			529			435	
Std. Deviation		351	171		310			352			311	
% Ferritin 800 to 1200		17%			16%			21%			12%	

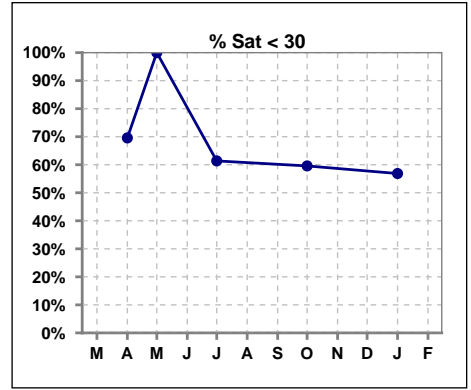


	Mar	Apr	May	Jun	Jul	Aug	Sep	Oct	Nov	Dec	Jan	Feb
# Ferritin		46	3		44			47			51	
# Ferritin > 1200		3						2			1	
Pop. Mean		553	242		470			529			435	
Std. Deviation		351	171		310			352			311	
% Ferritin > 1200		7%						4%			2%	

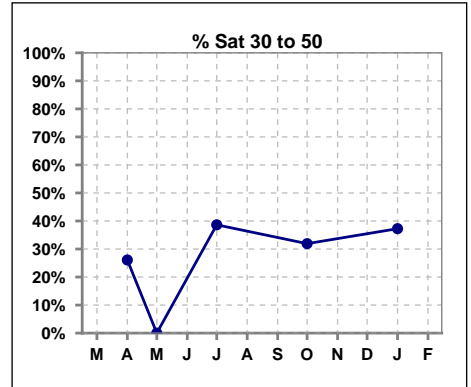


V. ANEMIA - CONT.

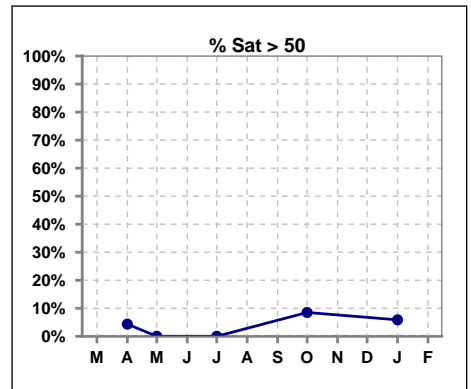
	Mar	Apr	May	Jun	Jul	Aug	Sep	Oct	Nov	Dec	Jan	Feb
# % Sat		46	3		44			47			51	
# % Sat < 30		32	3		27			28			29	
Pop. Mean		26	22		28			29			29	
Std. Deviation		12	4		10			13			11	
% % Sat < 30		70%	100%		61%			60%			57%	



	Mar	Apr	May	Jun	Jul	Aug	Sep	Oct	Nov	Dec	Jan	Feb
# % Sat		46	3		44			47			51	
# % Sat 30 to 50		12	0		17			15			19	
Pop. Mean		26	22		28			29			29	
Std. Deviation		12	4		10			13			11	
% % Sat 30 to 50		26%	0%		39%			32%			37%	

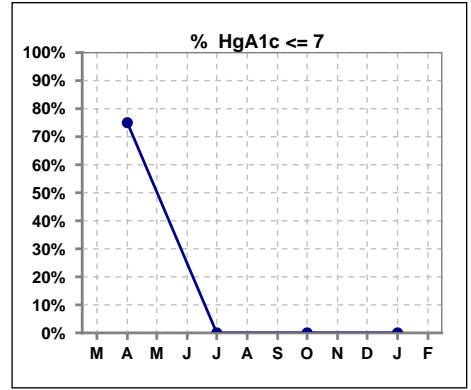


	Mar	Apr	May	Jun	Jul	Aug	Sep	Oct	Nov	Dec	Jan	Feb
# % Sat		46	3		44			47			51	
# % Sat > 50		2	0		0			4			3	
Pop. Mean		26	22		28			29			29	
Std. Deviation		12	4		10			13			11	
% % Sat > 50		4%	0%		0%			9%			6%	



VI. Diabetes

	Mar	Apr	May	Jun	Jul	Aug	Sep	Oct	Nov	Dec	Jan	Feb
# HgA1c		32			0			0			0	
# HgA1c <= 7		24			0			0			0	
Pop. Mean		6.3			0			0			0	
Std. Deviation		1.71			0			0			0	
% HgA1c <= 7		75%			0%			0%			0%	

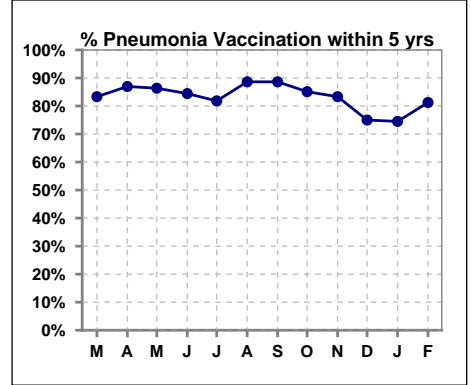


Methodology: a) All labs for 'Adequacy of Dialysis', 'Nutrition', 'Osteodystrophy', 'Anemia' and 'Diabetes' based on last value of month; b) BP's and #L processed are average of all values for month; c) Access data takes last access of month; d) Values for SGA and 'Infection Control' use most recent result.

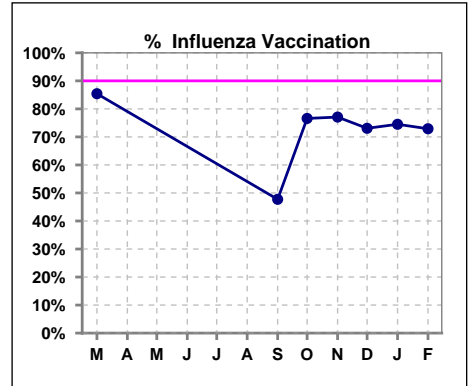
VII. Infection Control

Pneumonia vaccination within the past five years

	Mar	Apr	May	Jun	Jul	Aug	Sep	Oct	Nov	Dec	Jan	Feb
# Patient	48	46	44	45	44	44	44	47	48	52	51	48
# Pneumonia	40	40	38	38	36	39	39	40	40	39	38	39
% Pneumonia	83%	87%	86%	84%	82%	89%	89%	85%	83%	75%	75%	81%

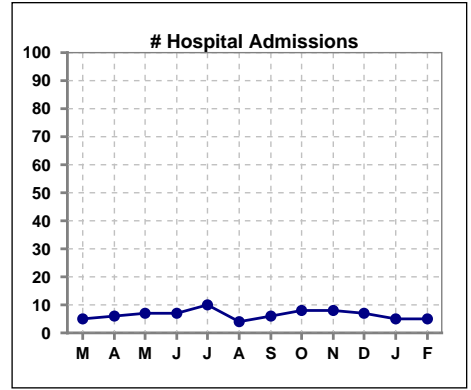


	Mar	Apr	May	Jun	Jul	Aug	Sep	Oct	Nov	Dec	Jan	Feb
# Patient	48						44	47	48	52	51	48
# Influenza	41						21	36	37	38	38	35
% Influenza	85%						48%	77%	77%	73%	75%	73%

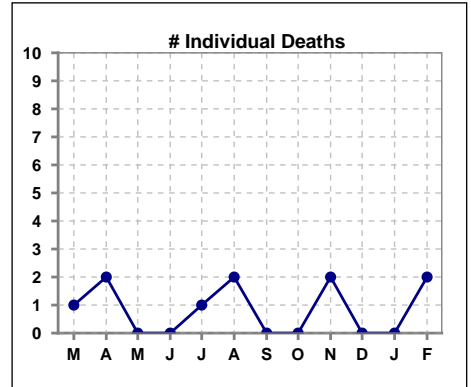


VIII. Outcome measures

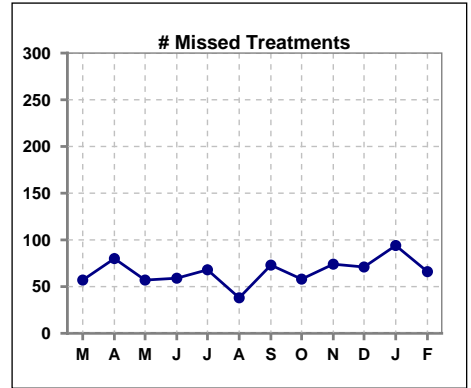
	Mar	Apr	May	Jun	Jul	Aug	Sep	Oct	Nov	Dec	Jan	Feb
# Patient	48	46	44	45	44	44	44	47	48	52	51	48
# Hospital Admissions	5	6	7	7	10	4	6	8	8	7	5	5



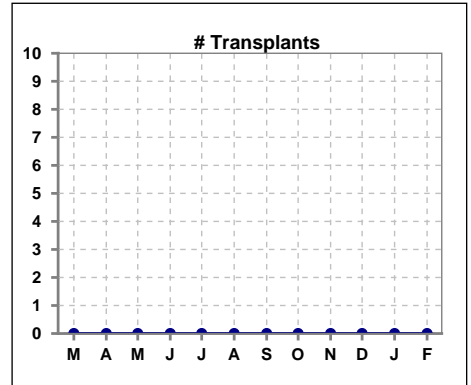
	Mar	Apr	May	Jun	Jul	Aug	Sep	Oct	Nov	Dec	Jan	Feb
# Patient	48	46	44	45	44	44	44	47	48	52	51	48
# Individual Deaths	1	2	0	0	1	2	0	0	2	0	0	2



	Mar	Apr	May	Jun	Jul	Aug	Sep	Oct	Nov	Dec	Jan	Feb
# Patient	48	46	44	45	44	44	44	47	48	52	51	48
# Missed Treatments	57	80	57	59	68	38	73	58	74	71	94	66



	Mar	Apr	May	Jun	Jul	Aug	Sep	Oct	Nov	Dec	Jan	Feb
# Patient	48	46	44	45	44	44	44	47	48	52	51	48
# Transplants	0	0	0	0	0	0	0	0	0	0	0	0



Methodology: a) All labs for 'Adequacy of Dialysis', 'Nutrition', 'Osteodystrophy', 'Anemia' and 'Diabetes' based on last value of month; b) BP's and #L processed are average of all values for month; c) Access data takes last access of month; d) Values for SGA and 'Infection Control' use most recent result.