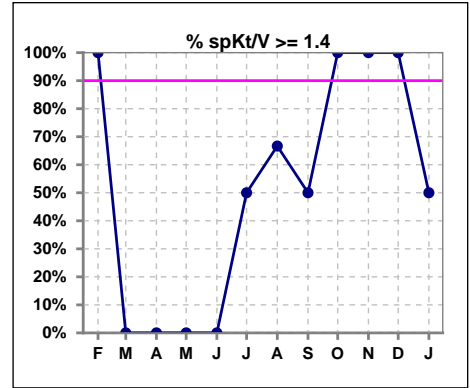
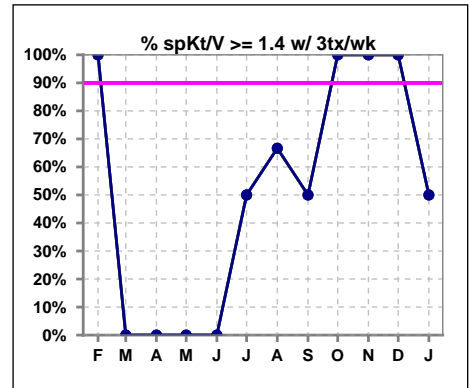


I. ADEQUACY OF DIALYSIS

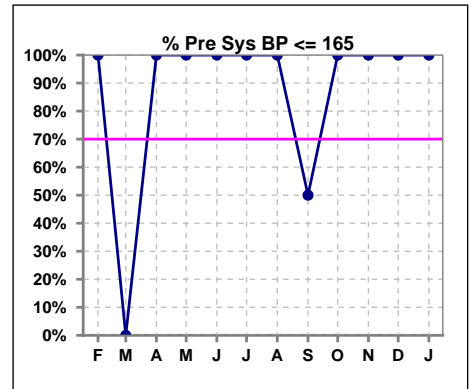
	Feb	Mar	Apr	May	Jun	Jul	Aug	Sep	Oct	Nov	Dec	Jan
# spKt/V	2	0	1	1	2	2	3	2	1	1	1	2
# spKt/V >= 1.4	2	0	0	0	0	1	2	1	1	1	1	1
Pop. Mean	1.70	0	1.25	1.38	1.31	1.37	1.48	1.41	1.58	1.50	1.87	1.62
Std. Deviation	0.01	0	0	0	0.03	0.39	0.15	0.07	0	0	0	0.45
% spKt/V >= 1.4	100%	0%	0%	0%	0%	50%	67%	50%	100%	100%	100%	50%
% spKt/V >= 1.2	100%	0%	100%	100%	100%	50%	100%	100%	100%	100%	100%	100%



	Feb	Mar	Apr	May	Jun	Jul	Aug	Sep	Oct	Nov	Dec	Jan
# spKt/V w/ 3tx/wk	2	0	1	1	2	2	3	2	1	1	1	2
# spKt/V >= 1.4 w/3tx/wk	2	0	0	0	0	1	2	1	1	1	1	1
Pop. Mean	1.70	0	1.25	1.38	1.31	1.37	1.48	1.41	1.58	1.50	1.87	1.62
Std. Deviation	0.01	0	0	0	0.03	0.39	0.15	0.07	0	0	0	0.45
% spKt/V >= 1.4 w/3tx/wk	100%	0%	0%	0%	0%	50%	67%	50%	100%	100%	100%	50%



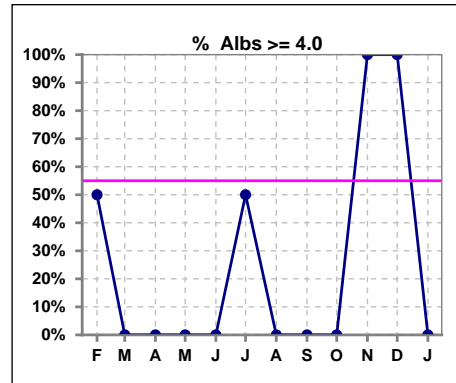
	Feb	Mar	Apr	May	Jun	Jul	Aug	Sep	Oct	Nov	Dec	Jan
# Pre Sys BP	2	0	1	1	2	2	3	2	1	1	1	2
# Pre Sys BP <= 165	2	0	1	1	2	2	3	1	1	1	1	2
Pop. Mean	151	0	146	140	124	126	143	159	136	158	162	149
Std. Deviation	2.8	0	0	0	17.0	7.1	11.0	24.0	0	0	0	18.4
%Pre Sys BP <=165	100%	0%	100%	100%	100%	100%	100%	50%	100%	100%	100%	100%



*Albumin values use BCG method - as of July 2001

II. NUTRITION

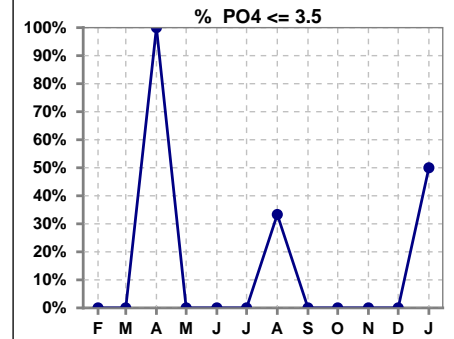
	Feb	Mar	Apr	May	Jun	Jul	Aug	Sep	Oct	Nov	Dec	Jan
# Albumin	2	0	1	1	2	2	3	2	1	1	1	2
# Albumin >= 4.0	1	0	0	0	0	1	0	0	0	1	1	0
Pop. Mean	4.1	0	2.9	3.5	3.5	3.3	3.3	3.6	3.9	4.4	4.4	3.6
Std. Deviation	0.78	0	0	0	0.07	1.06	0.36	0.42	0	0	0	0.21
% Alb >= 4.0	50%	0%	0%	0%	0%	50%	0%	0%	0%	100%	100%	0%



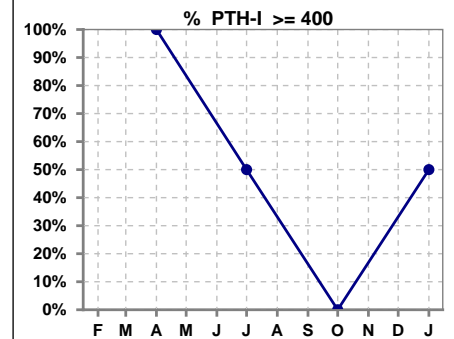
Lab methodology for PTH changed January 2012

III. OSTEODYSTROPHY

	Feb	Mar	Apr	May	Jun	Jul	Aug	Sep	Oct	Nov	Dec	Jan
# PO4	2	0	1	1	2	2	3	2	1	1	1	2
# PO4 <= 3.5	0	0	1	0	0	0	1	0	0	0	0	1
Pop. Mean	9.1	0	3.0	4.8	6.7	4.5	4.4	7.4	6.8	6.2	5.0	4.9
Std. Deviation	5.30	0	0	0	1.27	0.99	2.15	1.27	0	0	0	2.12
% PO4 <= 3.5	0%	0%	100%	0%	0%	0%	33%	0%	0%	0%	0%	50%



	Feb	Mar	Apr	May	Jun	Jul	Aug	Sep	Oct	Nov	Dec	Jan
# PTH-I			1			2			1			2
# PTH-I >= 400			1			1			0			1
Pop. Mean			550			370			348			585
Std. Deviation			0			412			0			694
% PTH-I >= 400			100%			50%			0%			50%

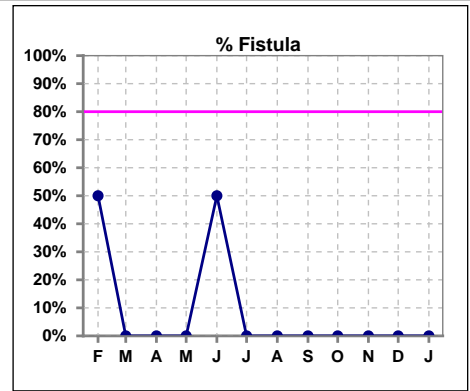


Fife Kidney Center - Center Hemodialysis
Quality Assurance Reports (Patients in first 90 days of treatment)
 Through period ending Jan. 31, 2026

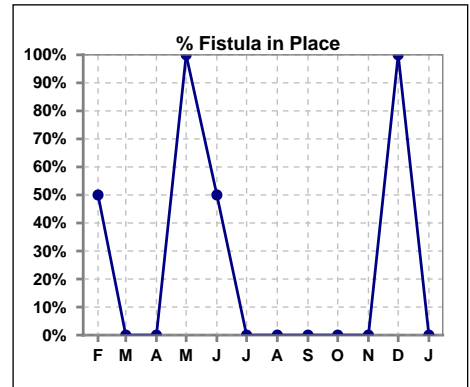
4

IV. ACCESS

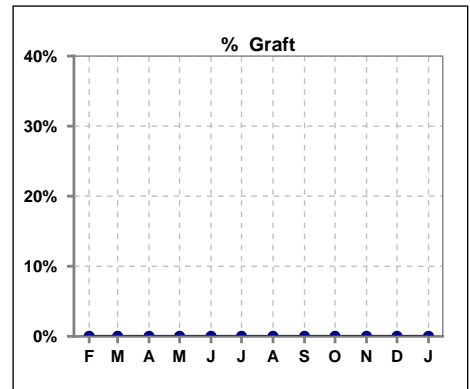
	Feb	Mar	Apr	May	Jun	Jul	Aug	Sep	Oct	Nov	Dec	Jan
# Access	2	0	1	1	2	2	3	2	1	1	1	2
# Fistula	1	0	0	0	1	0	0	0	0	0	0	0
% Fistula	50%	0%	0%	0%	50%	0%	0%	0%	0%	0%	0%	0%



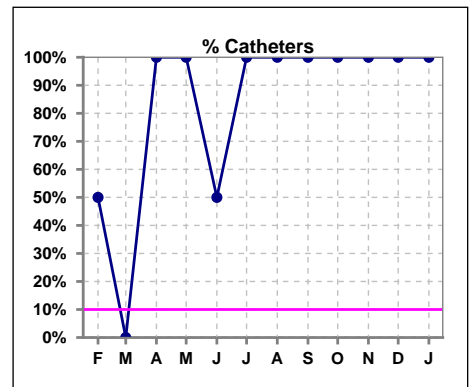
	Feb	Mar	Apr	May	Jun	Jul	Aug	Sep	Oct	Nov	Dec	Jan
# Patient	2	0	1	1	2	2	3	2	1	1	1	2
# Fistula in Place	1	0	0	1	1	0	0	0	0	0	1	0
% Fistula in Place	50%	0%	0%	100%	50%	0%	0%	0%	0%	0%	100%	0%



	Feb	Mar	Apr	May	Jun	Jul	Aug	Sep	Oct	Nov	Dec	Jan
# Access	2	0	1	1	2	2	3	2	1	1	1	2
# Graft	0	0	0	0	0	0	0	0	0	0	0	0
% Graft	0%	0%	0%	0%	0%	0%	0%	0%	0%	0%	0%	0%



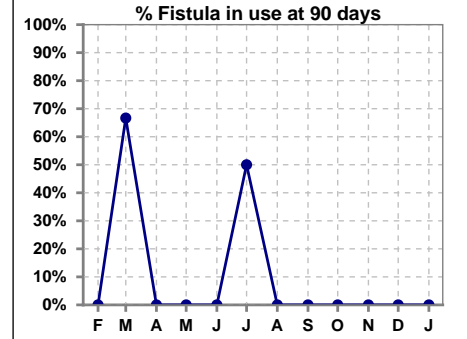
	Feb	Mar	Apr	May	Jun	Jul	Aug	Sep	Oct	Nov	Dec	Jan
# Access	2	0	1	1	2	2	3	2	1	1	1	2
# Catheters	1	0	1	1	1	2	3	2	1	1	1	2
% Catheters	50%	0%	100%	100%	50%	100%	100%	100%	100%	100%	100%	100%



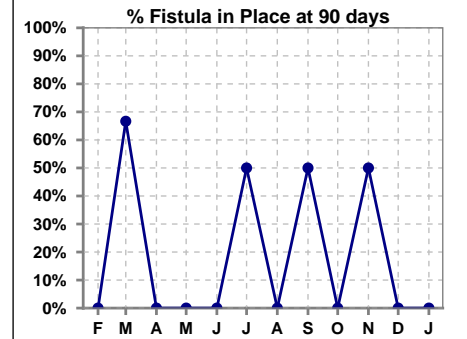
Methodology: a) All labs for 'Adequacy of Dialysis', 'Nutrition', 'Osteodystrophy', 'Anemia' and 'Diabetes' based on last value of month; b) BP's and #L processed are average of all values for month; c) Access data takes last access of month; d) Values for SGA and 'Infection Control' use most recent result.

IV. ACCESS - CONT. Access at 90 days for those patients that reached 90 days within the month.

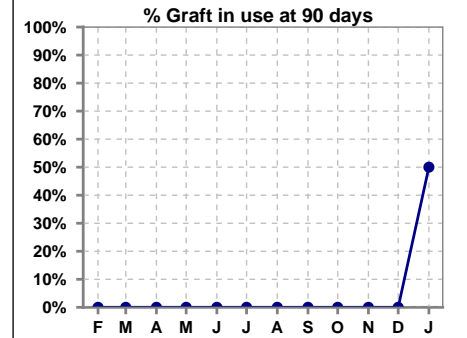
	Feb	Mar	Apr	May	Jun	Jul	Aug	Sep	Oct	Nov	Dec	Jan
# Patient	1	3	0	0	0	2	0	2	0	2	0	2
# Fistula in use	0	2	0	0	0	1	0	0	0	0	0	0
% Fistula in use	0%	67%	0%	0%	0%	50%	0%	0%	0%	0%	0%	0%



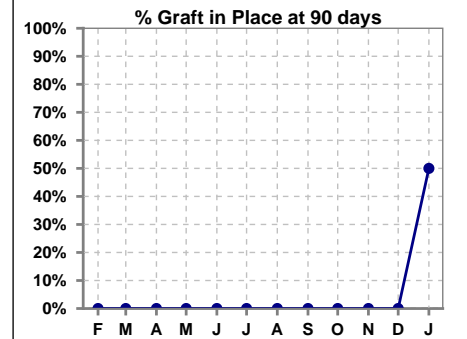
	Feb	Mar	Apr	May	Jun	Jul	Aug	Sep	Oct	Nov	Dec	Jan
# Patient	1	3	0	0	0	2	0	2	0	2	0	2
# Fistula in Place	0	2	0	0	0	1	0	1	0	1	0	0
% Fistula in Place	0%	67%	0%	0%	0%	50%	0%	50%	0%	50%	0%	0%



	Feb	Mar	Apr	May	Jun	Jul	Aug	Sep	Oct	Nov	Dec	Jan
# Patient	1	3	0	0	0	2	0	2	0	2	0	2
# Graft in use	0	0	0	0	0	0	0	0	0	0	0	1
% Graft in use	0%	0%	0%	0%	0%	0%	0%	0%	0%	0%	0%	50%

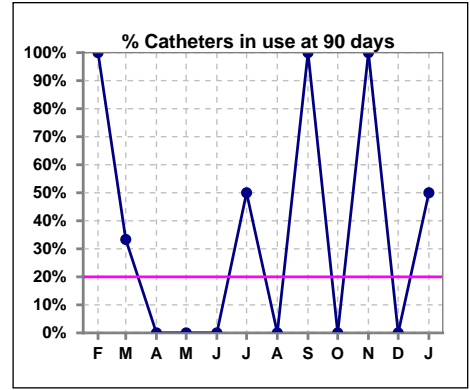


	Feb	Mar	Apr	May	Jun	Jul	Aug	Sep	Oct	Nov	Dec	Jan
# Patient	1	3	0	0	0	2	0	2	0	2	0	2
# Graft in Place	0	0	0	0	0	0	0	0	0	0	0	1
% Graft in Place	0%	0%	0%	0%	0%	0%	0%	0%	0%	0%	0%	50%

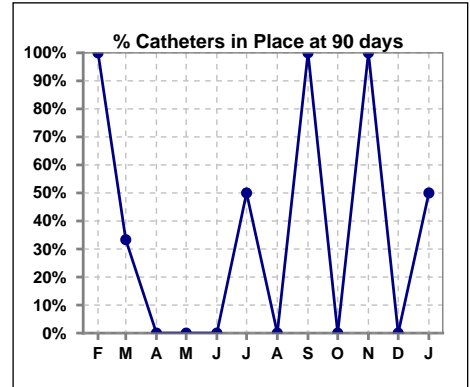


IV. ACCESS - CONT. Access at 90 days for those patients that reached 90 days within the month.

	Feb	Mar	Apr	May	Jun	Jul	Aug	Sep	Oct	Nov	Dec	Jan
# Patient	1	3	0	0	0	2	0	2	0	2	0	2
# Catheters in use	1	1	0	0	0	1	0	2	0	2	0	1
% Catheters in use	100%	33%	0%	0%	0%	50%	0%	100%	0%	100%	0%	50%

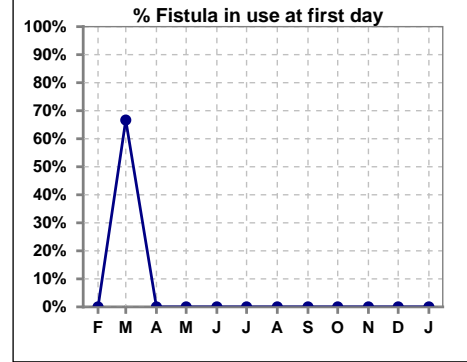


	Feb	Mar	Apr	May	Jun	Jul	Aug	Sep	Oct	Nov	Dec	Jan
# Patient	1	3	0	0	0	2	0	2	0	2	0	2
# Catheters in Place	1	1	0	0	0	1	0	2	0	2	0	1
% Catheters in Place	100%	33%	0%	0%	0%	50%	0%	100%	0%	100%	0%	50%

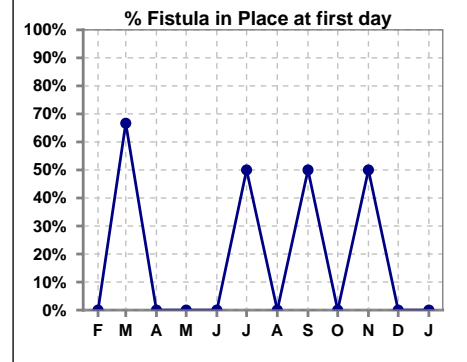


IV. ACCESS - CONT. Access at first day for those patients that reached 90 days within the month.

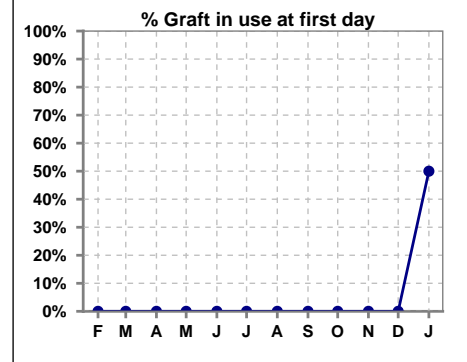
	Feb	Mar	Apr	May	Jun	Jul	Aug	Sep	Oct	Nov	Dec	Jan
# Patient	1	3	0	0	0	2	0	2	0	2	0	2
# Fistula in use	0	2	0	0	0	0	0	0	0	0	0	0
% Fistula in use	0%	67%	0%	0%	0%	0%	0%	0%	0%	0%	0%	0%



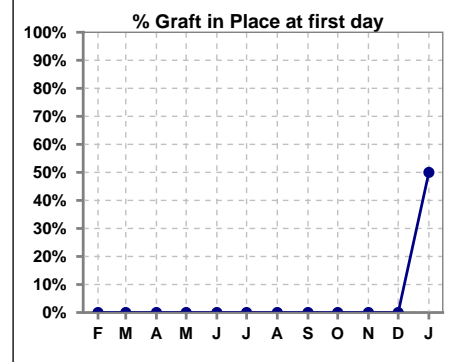
	Feb	Mar	Apr	May	Jun	Jul	Aug	Sep	Oct	Nov	Dec	Jan
# Patient	1	3	0	0	0	2	0	2	0	2	0	2
# Fistula in Place	0	2	0	0	0	1	0	1	0	1	0	0
% Fistula in Place	0%	67%	0%	0%	0%	50%	0%	50%	0%	50%	0%	0%



	Feb	Mar	Apr	May	Jun	Jul	Aug	Sep	Oct	Nov	Dec	Jan
# Patient	1	3	0	0	0	2	0	2	0	2	0	2
# Graft in use	0	0	0	0	0	0	0	0	0	0	0	1
% Graft in use	0%	0%	0%	0%	0%	0%	0%	0%	0%	0%	0%	50%

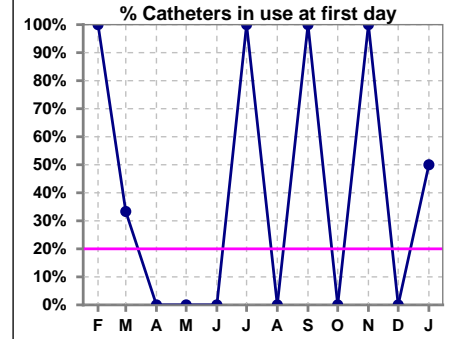


	Feb	Mar	Apr	May	Jun	Jul	Aug	Sep	Oct	Nov	Dec	Jan
# Patient	1	3	0	0	0	2	0	2	0	2	0	2
# Graft in Place	0	0	0	0	0	0	0	0	0	0	0	1
% Graft in Place	0%	0%	0%	0%	0%	0%	0%	0%	0%	0%	0%	50%

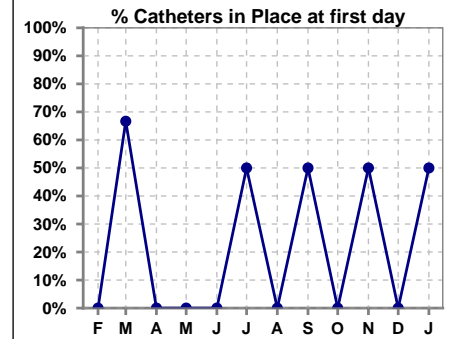


IV. ACCESS - CONT. Access at first day for those patients that reached 90 days within the month.

	Feb	Mar	Apr	May	Jun	Jul	Aug	Sep	Oct	Nov	Dec	Jan
# Patient	1	3	0	0	0	2	0	2	0	2	0	2
# Catheters in use	1	1	0	0	0	2	0	2	0	2	0	1
% Catheters in use	100%	33%	0%	0%	0%	100%	0%	100%	0%	100%	0%	50%



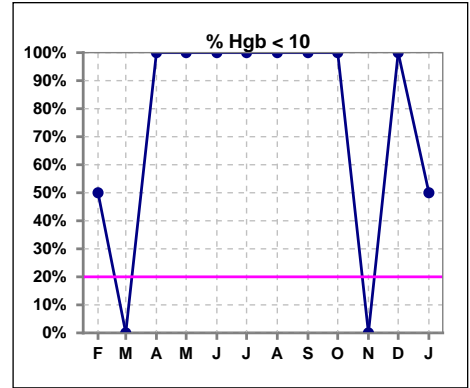
	Feb	Mar	Apr	May	Jun	Jul	Aug	Sep	Oct	Nov	Dec	Jan
# Patient	1	3	0	0	0	2	0	2	0	2	0	2
# Catheters in Place	0	2	0	0	0	1	0	1	0	1	0	1
% Catheters in Place	0%	67%	0%	0%	0%	50%	0%	50%	0%	50%	0%	50%



V. ANEMIA

	Feb	Mar	Apr	May	Jun	Jul	Aug	Sep	Oct	Nov	Dec	Jan
# Hgb	2	0	1	1	2	1	2	2	1	0	1	2
# Hgb <= 10	1	0	1	1	2	1	2	2	1	0	1	1
Pop. Mean	9.9	0	7.0	7.9	7.8	7.8	8.7	8.8	10.0	0	9.4	9.6
Std. Deviation	1.8	0	0	0	0.8	0	0.6	0.7	0	0	0	1.2
% Hgb <= 10	50%	0%	100%	100%	100%	100%	100%	100%	100%	0%	100%	50%

Note: Excludes patients who received no ESA in month.



	Feb	Mar	Apr	May	Jun	Jul	Aug	Sep	Oct	Nov	Dec	Jan
# Hgb	2	0	1	1	2	1	2	2	1	0	1	2
# Hgb >= 12	0	0	0	0	0	0	0	0	0	0	0	0
Pop. Mean	9.9	0	7.0	7.9	7.8	7.8	8.7	8.8	10.0	0	9.4	9.6
Std. Deviation	1.8	0	0	0	0.8	0	0.6	0.7	0	0	0	1.2
% Hgb >= 12	0%	0%	0%	0%	0%	0%	0%	0%	0%	0%	0%	0%

Note: Excludes patients who received no ESA in month.

