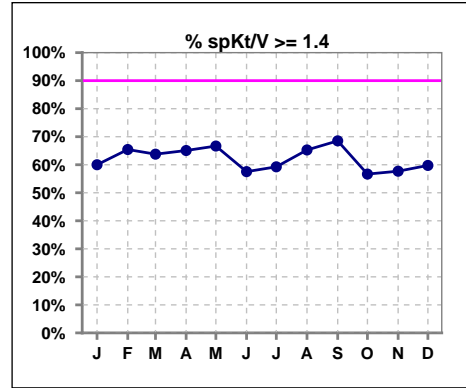
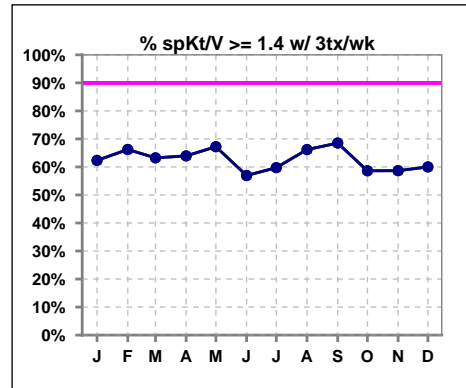


I. ADEQUACY OF DIALYSIS

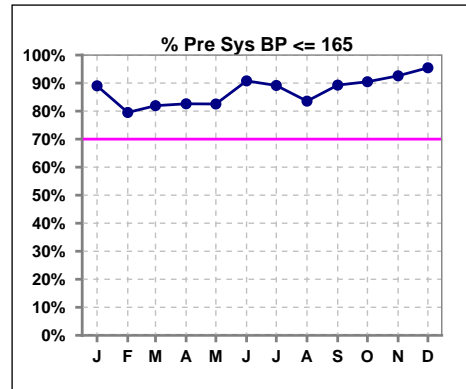
	Jan	Feb	Mar	Apr	May	Jun	Jul	Aug	Sep	Oct	Nov	Dec
# spKt/V	80	81	69	63	63	73	81	72	54	60	78	82
# spKt/V >= 1.4	48	53	44	41	42	42	48	47	37	34	45	49
Pop. Mean	1.48	1.54	1.55	1.50	1.50	1.46	1.51	1.51	1.51	1.51	1.47	1.49
Std. Deviation	0.38	0.34	0.30	0.39	0.39	0.36	0.37	0.29	0.33	0.45	0.33	0.35
% spKt/V >= 1.4	60%	65%	64%	65%	67%	58%	59%	65%	69%	57%	58%	60%
% spKt/V >= 1.2	85%	90%	94%	81%	86%	81%	88%	90%	91%	88%	88%	90%



	Jan	Feb	Mar	Apr	May	Jun	Jul	Aug	Sep	Oct	Nov	Dec
# spKt/V w/ 3tx/wk	77	77	68	61	61	72	77	71	54	58	75	80
# spKt/V >= 1.4 w/3tx/wk	48	51	43	39	41	41	46	47	37	34	44	48
Pop. Mean	1.49	1.54	1.55	1.48	1.50	1.46	1.51	1.51	1.51	1.53	1.48	1.49
Std. Deviation	0.38	0.35	0.30	0.39	0.40	0.36	0.38	0.29	0.33	0.44	0.33	0.35
% spKt/V >= 1.4 w/3tx/wk	62%	66%	63%	64%	67%	57%	60%	66%	69%	59%	59%	60%



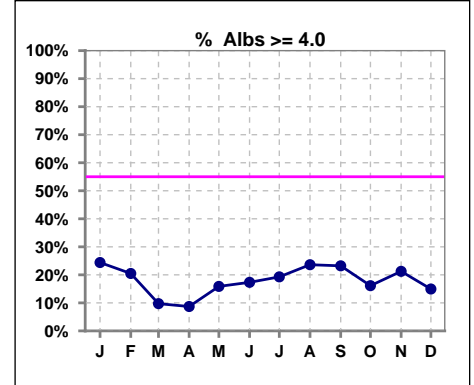
	Jan	Feb	Mar	Apr	May	Jun	Jul	Aug	Sep	Oct	Nov	Dec
# Pre Sys BP	82	83	72	69	63	76	83	73	56	63	81	88
# Pre Sys BP <= 165	73	66	59	57	52	71	75	61	50	59	75	84
Pop. Mean	145	147	146	145	144	139	139	140	139	141	141	141
Std. Deviation	17.5	17.8	21.5	20.7	22.8	20.2	19.2	23.2	20.1	16.9	17.1	15.3
% Pre Sys BP <= 165	89%	80%	82%	83%	83%	91%	89%	84%	89%	90%	93%	95%



*Albumin values use BCG method - as of July 2001

II. NUTRITION

	Jan	Feb	Mar	Apr	May	Jun	Jul	Aug	Sep	Oct	Nov	Dec
# Albumin	82	83	72	69	63	75	83	72	56	62	80	87
# Albumin >= 4.0	20	17	7	6	10	13	16	17	13	10	17	13
Pop. Mean	3.5	3.6	3.5	3.4	3.4	3.4	3.4	3.6	3.5	3.4	3.6	3.4
Std. Deviation	0.52	0.49	0.47	0.52	0.61	0.64	0.57	0.49	0.56	0.54	0.47	0.53
% Alb >= 4.0	24%	20%	10%	9%	16%	17%	19%	24%	23%	16%	21%	15%

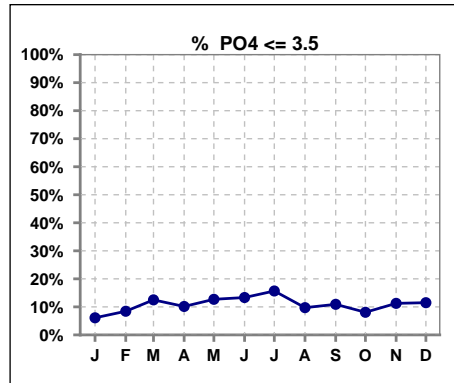


Methodology: a) All labs for 'Adequacy of Dialysis', 'Nutrition', 'Osteodystrophy', 'Anemia' and 'Diabetes' based on last value of month; b) BP's and #L processed are average of all values for month; c) Access data takes last access of month; d) Values for SGA and 'Infection Control' use most recent result.

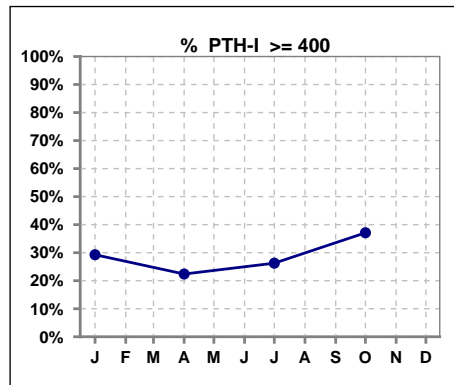
Lab methodology for PTH changed January 2012

III. OSTEODYSTROPHY

	Jan	Feb	Mar	Apr	May	Jun	Jul	Aug	Sep	Oct	Nov	Dec
# PO4	82	83	72	69	63	75	83	72	55	62	80	87
# PO4 <= 3.5	5	7	9	7	8	10	13	7	6	5	9	10
Pop. Mean	5.8	5.2	5.4	5.3	5.9	5.3	5.3	5.6	5.4	5.5	5.5	5.3
Std. Deviation	1.66	1.35	1.93	1.92	2.22	1.68	1.97	1.95	1.81	1.78	1.76	1.72
% PO4 <= 3.5	6%	8%	13%	10%	13%	13%	16%	10%	11%	8%	11%	11%



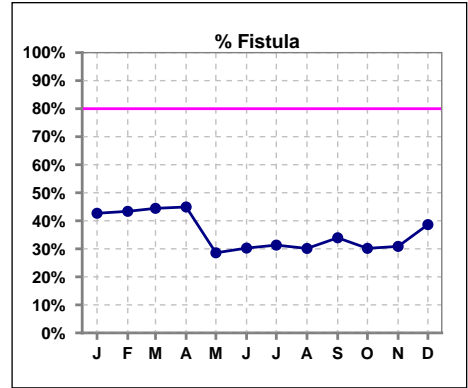
	Jan	Feb	Mar	Apr	May	Jun	Jul	Aug	Sep	Oct	Nov	Dec
# PTH-I	82			67			80			62		
# PTH-I >= 400	24			15			21			23		
Pop. Mean	392			275			323			315		
Std. Deviation	343			211			284			214		
% PTH-I >= 400	29%			22%			26%			37%		



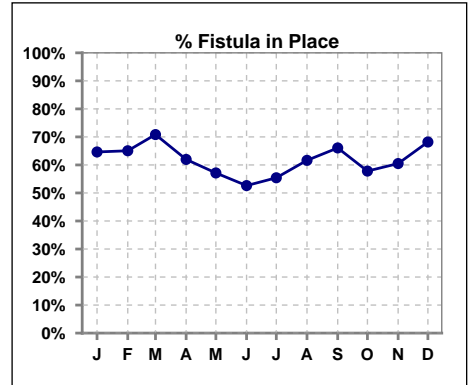
Methodology: a) All labs for 'Adequacy of Dialysis', 'Nutrition', 'Osteodystrophy', 'Anemia' and 'Diabetes' based on last value of month; b) BP's and #L processed are average of all values for month; c) Access data takes last access of month; d) Values for SGA and 'Infection Control' use most recent result.

IV. ACCESS

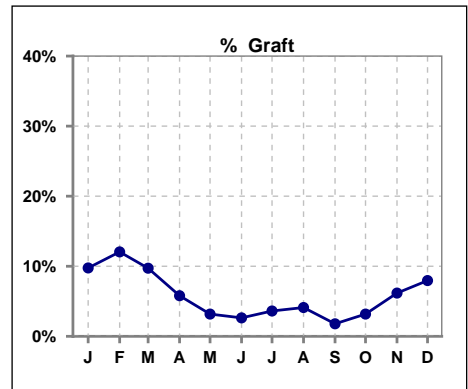
	Jan	Feb	Mar	Apr	May	Jun	Jul	Aug	Sep	Oct	Nov	Dec
# Access	81	83	72	69	63	75	83	73	56	63	81	88
# Fistula	35	36	32	31	18	23	26	22	19	19	25	34
% Fistula	43%	43%	44%	45%	29%	30%	31%	30%	34%	30%	31%	39%



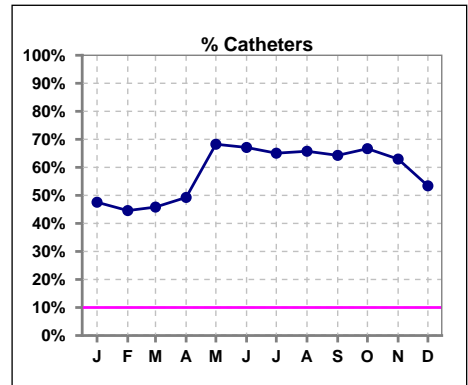
	Jan	Feb	Mar	Apr	May	Jun	Jul	Aug	Sep	Oct	Nov	Dec
# Patient	82	83	72	71	63	76	83	73	56	64	81	88
# Fistula in Place	53	54	51	44	36	40	46	45	37	37	49	60
% Fistula in Place	65%	65%	71%	62%	57%	53%	55%	62%	66%	58%	60%	68%



	Jan	Feb	Mar	Apr	May	Jun	Jul	Aug	Sep	Oct	Nov	Dec
# Access	81	83	72	69	63	75	83	73	56	63	81	88
# Graft	8	10	7	4	2	2	3	3	1	2	5	7
% Graft	10%	12%	10%	6%	3%	3%	4%	4%	2%	3%	6%	8%



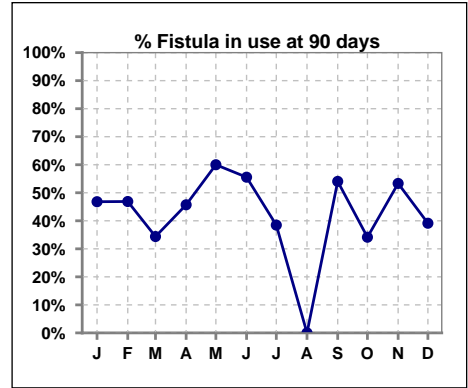
	Jan	Feb	Mar	Apr	May	Jun	Jul	Aug	Sep	Oct	Nov	Dec
# Access	81	83	72	69	63	75	83	73	56	63	81	88
# Catheters	39	37	33	34	43	51	54	48	36	42	51	47
% Catheters	48%	45%	46%	49%	68%	67%	65%	66%	64%	67%	63%	53%



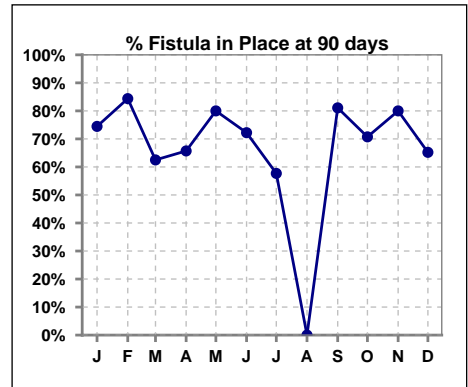
Methodology: a) All labs for 'Adequacy of Dialysis', 'Nutrition', 'Osteodystrophy', 'Anemia' and 'Diabetes' based on last value of month; b) BP's and #L processed are average of all values for month; c) Access data takes last access of month; d) Values for SGA and 'Infection Control' use most recent result.

IV. ACCESS - CONT. Access at 90 days for those patients that reached 90 days within the month.

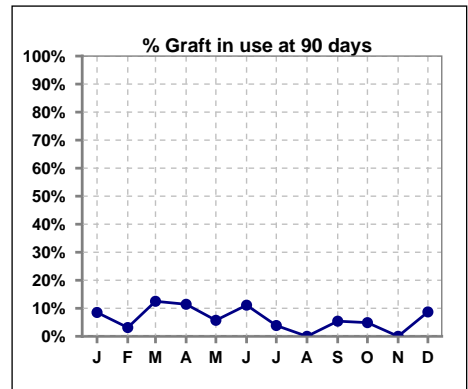
	Jan	Feb	Mar	Apr	May	Jun	Jul	Aug	Sep	Oct	Nov	Dec
# Patient	47	32	32	35	35	18	26	0	37	41	15	23
# Fistula in use	22	15	11	16	21	10	10	0	20	14	8	9
% Fistula in use	47%	47%	34%	46%	60%	56%	38%	0%	54%	34%	53%	39%



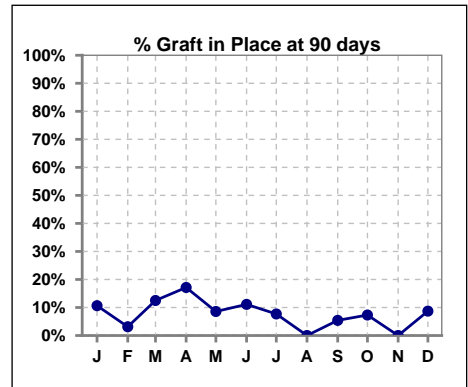
	Jan	Feb	Mar	Apr	May	Jun	Jul	Aug	Sep	Oct	Nov	Dec
# Patient	47	32	32	35	35	18	26	0	37	41	15	23
# Fistula in Place	35	27	20	23	28	13	15	0	30	29	12	15
% Fistula in Place	74%	84%	63%	66%	80%	72%	58%	0%	81%	71%	80%	65%



	Jan	Feb	Mar	Apr	May	Jun	Jul	Aug	Sep	Oct	Nov	Dec
# Patient	47	32	32	35	35	18	26	0	37	41	15	23
# Graft in use	4	1	4	4	2	2	1	0	2	2	0	2
% Graft in use	9%	3%	13%	11%	6%	11%	4%	0%	5%	5%	0%	9%



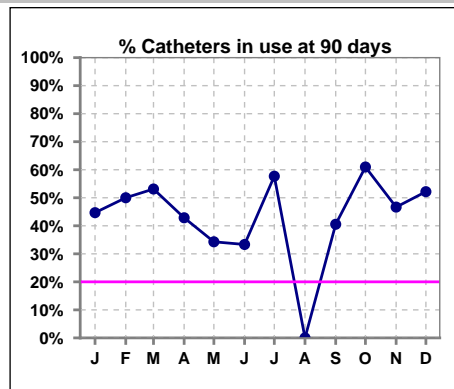
	Jan	Feb	Mar	Apr	May	Jun	Jul	Aug	Sep	Oct	Nov	Dec
# Patient	47	32	32	35	35	18	26	0	37	41	15	23
# Graft in Place	5	1	4	6	3	2	2	0	2	3	0	2
% Graft in Place	11%	3%	13%	17%	9%	11%	8%	0%	5%	7%	0%	9%



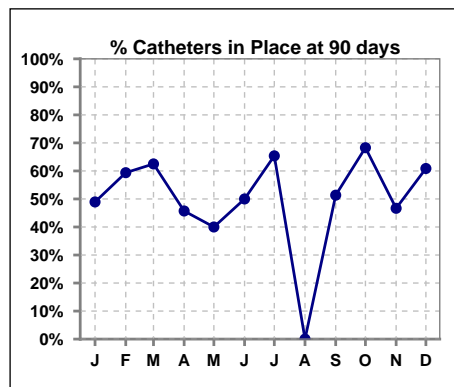
Methodology: a) All labs for 'Adequacy of Dialysis', 'Nutrition', 'Osteodystrophy', 'Anemia' and 'Diabetes' based on last value of month; b) BP's and #L processed are average of all values for month; c) Access data takes last access of month; d) Values for SGA and 'Infection Control' use most recent result.

IV. ACCESS - CONT. Access at 90 days for those patients that reached 90 days within the month.

	Jan	Feb	Mar	Apr	May	Jun	Jul	Aug	Sep	Oct	Nov	Dec
# Patient	47	32	32	35	35	18	26	0	37	41	15	23
# Catheters in use	21	16	17	15	12	6	15	0	15	25	7	12
% Catheters in use	45%	50%	53%	43%	34%	33%	58%	0%	41%	61%	47%	52%



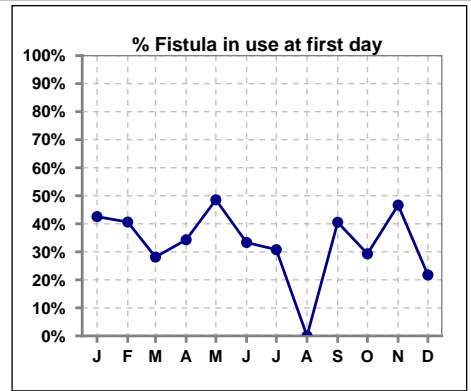
	Jan	Feb	Mar	Apr	May	Jun	Jul	Aug	Sep	Oct	Nov	Dec
# Patient	47	32	32	35	35	18	26	0	37	41	15	23
# Catheters in Place	23	19	20	16	14	9	17	0	19	28	7	14
% Catheters in Place	49%	59%	63%	46%	40%	50%	65%	0%	51%	68%	47%	61%



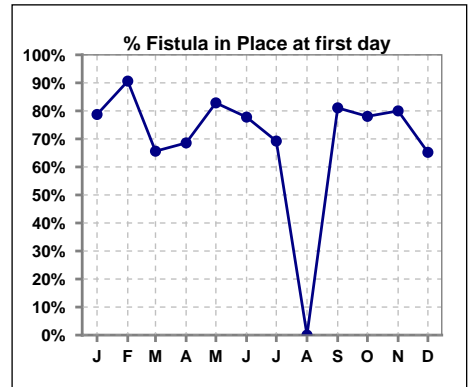
Methodology: a) All labs for 'Adequacy of Dialysis', 'Nutrition', 'Osteodystrophy', 'Anemia' and 'Diabetes' based on last value of month; b) BP's and #L processed are average of all values for month; c) Access data takes last access of month; d) Values for SGA and 'Infection Control' use most recent result.

IV. ACCESS - CONT. Access at first day for those patients that reached 90 days within the month.

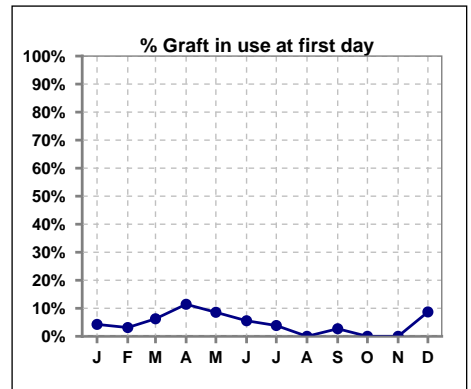
	Jan	Feb	Mar	Apr	May	Jun	Jul	Aug	Sep	Oct	Nov	Dec
# Patient	47	32	32	35	35	18	26	0	37	41	15	23
# Fistula in use	20	13	9	12	17	6	8	0	15	12	7	5
% Fistula in use	43%	41%	28%	34%	49%	33%	31%	0%	41%	29%	47%	22%



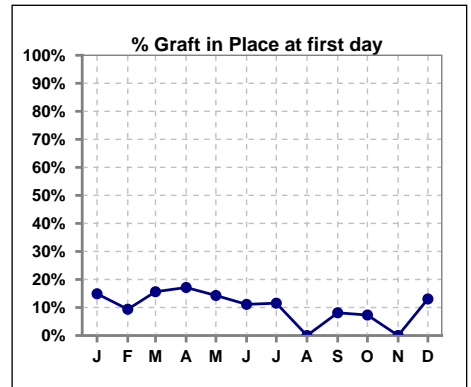
	Jan	Feb	Mar	Apr	May	Jun	Jul	Aug	Sep	Oct	Nov	Dec
# Patient	47	32	32	35	35	18	26	0	37	41	15	23
# Fistula in Place	37	29	21	24	29	14	18	0	30	32	12	15
% Fistula in Place	79%	91%	66%	69%	83%	78%	69%	0%	81%	78%	80%	65%



	Jan	Feb	Mar	Apr	May	Jun	Jul	Aug	Sep	Oct	Nov	Dec
# Patient	47	32	32	35	35	18	26	0	37	41	15	23
# Graft in use	2	1	2	4	3	1	1	0	1	0	0	2
% Graft in use	4%	3%	6%	11%	9%	6%	4%	0%	3%	0%	0%	9%



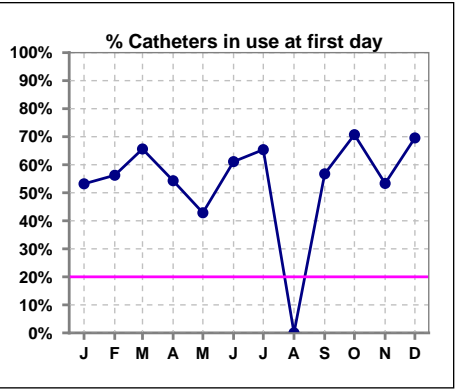
	Jan	Feb	Mar	Apr	May	Jun	Jul	Aug	Sep	Oct	Nov	Dec
# Patient	47	32	32	35	35	18	26	0	37	41	15	23
# Graft in Place	7	3	5	6	5	2	3	0	3	3	0	3
% Graft in Place	15%	9%	16%	17%	14%	11%	12%	0%	8%	7%	0%	13%



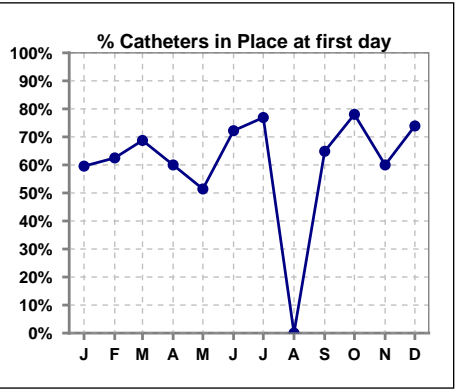
Methodology: a) All labs for 'Adequacy of Dialysis', 'Nutrition', 'Osteodystrophy', 'Anemia' and 'Diabetes' based on last value of month; b) BP's and #L processed are average of all values for month; c) Access data takes last access of month; d) Values for SGA and 'Infection Control' use most recent result.

IV. ACCESS - CONT. Access at first day for those patients that reached 90 days within the month.

	Jan	Feb	Mar	Apr	May	Jun	Jul	Aug	Sep	Oct	Nov	Dec
# Patient	47	32	32	35	35	18	26	0	37	41	15	23
# Catheters in use	25	18	21	19	15	11	17	0	21	29	8	16
% Catheters in use	53%	56%	66%	54%	43%	61%	65%	0%	57%	71%	53%	70%



	Jan	Feb	Mar	Apr	May	Jun	Jul	Aug	Sep	Oct	Nov	Dec
# Patient	47	32	32	35	35	18	26	0	37	41	15	23
# Catheters in Place	28	20	22	21	18	13	20	0	24	32	9	17
% Catheters in Place	60%	63%	69%	60%	51%	72%	77%	0%	65%	78%	60%	74%

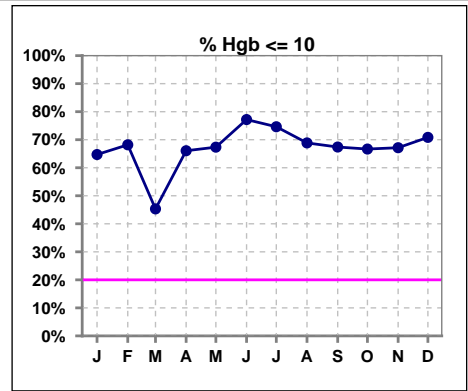


Methodology: a) All labs for 'Adequacy of Dialysis', 'Nutrition', 'Osteodystrophy', 'Anemia' and 'Diabetes' based on last value of month; b) BP's and #L processed are average of all values for month; c) Access data takes last access of month; d) Values for SGA and 'Infection Control' use most recent result.

V. ANEMIA

	Jan	Feb	Mar	Apr	May	Jun	Jul	Aug	Sep	Oct	Nov	Dec
# Hgb	68	66	64	56	49	57	67	61	46	51	70	72
# Hgb <= 10	44	45	29	37	33	44	50	42	31	34	47	51
Pop. Mean	9.6	9.7	10.1	9.7	9.3	9.3	9.2	9.5	9.5	9.3	9.5	9.4
Std. Deviation	1.5	1.3	1.3	1.5	1.3	1.4	1.3	1.4	1.6	1.5	1.5	1.4
% Hgb <= 10	65%	68%	45%	66%	67%	77%	75%	69%	67%	67%	67%	71%

Note: Excludes patients who received no ESA in month.



	Jan	Feb	Mar	Apr	May	Jun	Jul	Aug	Sep	Oct	Nov	Dec
# Hgb	68	66	64	56	49	57	67	61	46	51	70	72
# Hgb >= 12	5	3	3	6	0	4	0	3	2	2	7	2
Pop. Mean	9.6	9.7	10.1	9.7	9.3	9.3	9.2	9.5	9.5	9.3	9.5	9.4
Std. Deviation	1.5	1.3	1.3	1.5	1.3	1.4	1.3	1.4	1.6	1.5	1.5	1.4
% Hgb >= 12	7%	5%	5%	11%	0%	7%	0%	5%	4%	4%	10%	3%

Note: Excludes patients who received no ESA in month.

