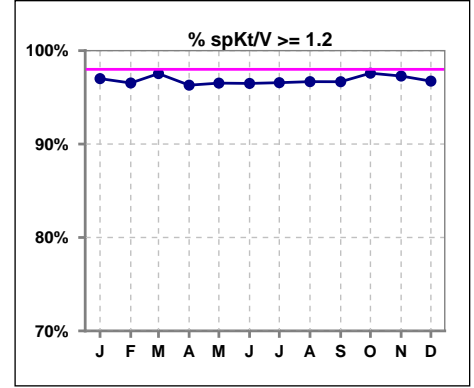
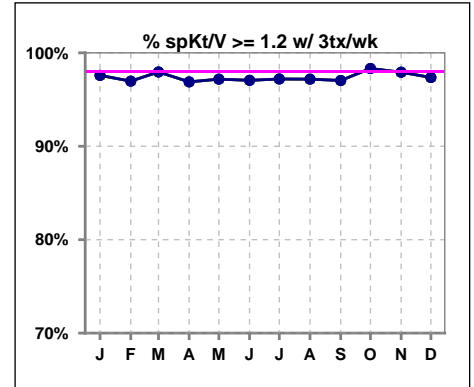


**I. ADEQUACY OF DIALYSIS**

	Jan	Feb	Mar	Apr	May	Jun	Jul	Aug	Sep	Oct	Nov	Dec
# spKt/V	1468	1472	1464	1461	1467	1482	1487	1476	1473	1491	1508	1502
# spKt/V >= 1.2	1424	1421	1428	1407	1416	1430	1436	1427	1424	1455	1467	1453
Pop. Mean	1.62	1.63	1.66	1.64	1.65	1.62	1.65	1.62	1.70	1.63	1.62	1.61
Std. Deviation	0.29	0.29	0.29	0.30	0.30	0.30	0.31	0.29	0.32	0.29	0.29	0.29
% spKt/V >= 1.2	97%	97%	98%	96%	97%	96%	97%	97%	97%	98%	97%	97%



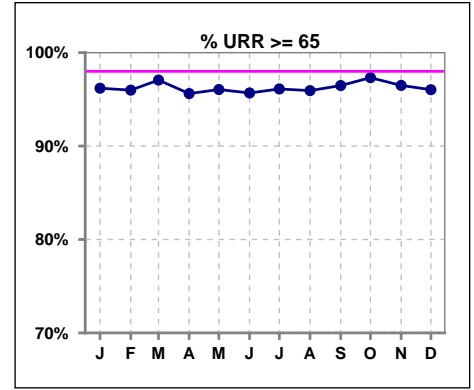
	Jan	Feb	Mar	Apr	May	Jun	Jul	Aug	Sep	Oct	Nov	Dec
# spKt/V w/ 3tx/wk	1408	1419	1415	1415	1419	1428	1429	1420	1419	1431	1446	1441
# spKt/V >= 1.2 w/3tx/wk	374	1376	1386	1371	1379	1386	1389	1380	1377	1407	1416	1403
Pop. Mean	1.62	1.63	1.67	1.64	1.66	1.63	1.66	1.63	1.71	1.64	1.62	1.61
Std. Deviation	0.29	0.29	0.29	0.29	0.30	0.30	0.31	0.29	0.31	0.29	0.28	0.28
% >= 1.2 w/3tx/wk	98%	97%	98%	97%	97%	97%	97%	97%	97%	98%	98%	97%



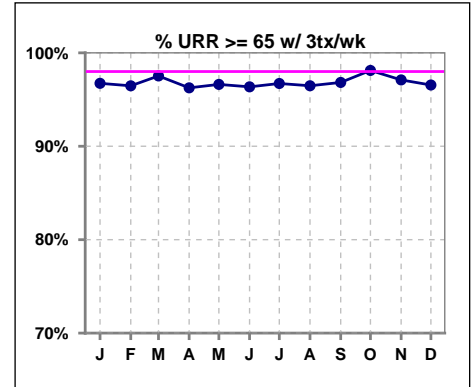
Methodology: a) All labs for 'Adequacy of Dialysis', 'Nutrition', 'Osteodystrophy', 'Anemia' and 'Diabetes' based on last value of month; b) BP's and #L processed are average of all values for month; c) Access data takes last access of month; d) Values for SGA and 'Infection Control' use most recent result.

**I. ADEQUACY OF DIALYSIS - CONT.**

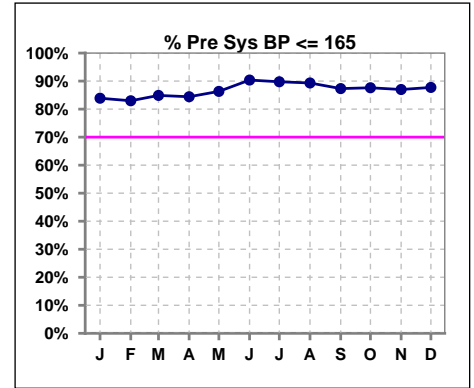
	Jan	Feb	Mar	Apr	May	Jun	Jul	Aug	Sep	Oct	Nov	Dec
# URR	1470	1470	1464	1461	1469	1483	1491	1476	1475	1493	1511	1513
# URR >= 65	1414	1411	1421	1397	1411	1419	1433	1416	1423	1453	1458	1453
Pop. Mean	75	75	76	75	76	75	76	75	76	75	75	75
Std. Deviation	6.18	5.99	5.79	6.09	6.18	6.20	6.49	5.90	6.28	6.02	6.16	5.97
% URR >= 65	96%	96%	97%	96%	96%	96%	96%	96%	96%	97%	96%	96%



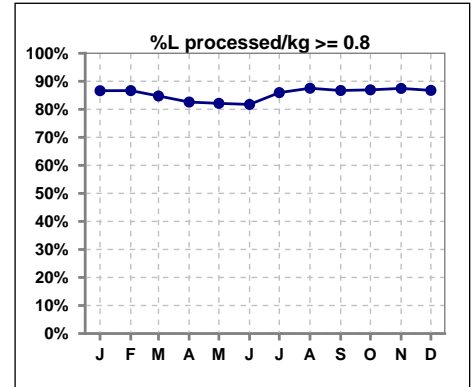
	Jan	Feb	Mar	Apr	May	Jun	Jul	Aug	Sep	Oct	Nov	Dec
# URR w/ 3tx/wk	1410	1417	1415	1415	1420	1429	1433	1419	1421	1433	1449	1452
# URR>=65 w/ 3tx/wk	1364	1367	1380	1362	1372	1377	1386	1369	1376	1406	1407	1402
Pop. Mean	75	75	76	75	76	75	76	75	77	75	75	75
Std. Deviation	6.03	5.88	5.66	5.95	6.03	6.09	6.33	5.68	6.15	5.81	6.03	5.83
% URR>=65 w/ 3tx/wk	97%	96%	98%	96%	97%	96%	97%	96%	97%	98%	97%	97%



	Jan	Feb	Mar	Apr	May	Jun	Jul	Aug	Sep	Oct	Nov	Dec
# Pre Sys BP	1483	1486	1476	1476	1477	1495	1503	1491	1483	1502	1523	1525
# Pre Sys BP <= 165	1248	1235	1254	1247	1275	1353	1351	1333	1296	1321	1326	1340
Pop. Mean	146	146	145	144	144	141	138	140	142	142	142	142
Std. Deviation	19.5	19.5	19.6	19.7	19.8	19.3	19.5	19.9	20.5	20.1	20.4	20.1
% Pre Sys BP <=165	84%	83%	85%	84%	86%	90%	90%	89%	87%	88%	87%	88%



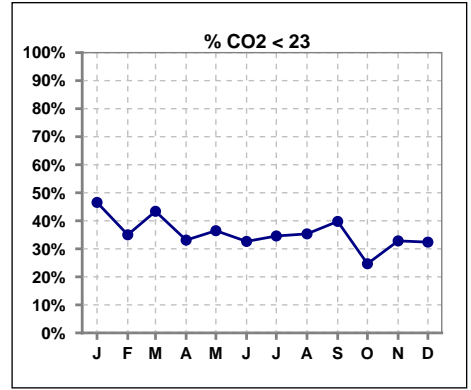
	Jan	Feb	Mar	Apr	May	Jun	Jul	Aug	Sep	Oct	Nov	Dec
# L processed/kg	1482	1486	1476	1476	1477	1495	1503	1491	1483	1502	1523	1525
# L processed/kg>=0.8	1284	1288	1251	1219	1213	1222	1292	1305	1286	1306	1332	1323
Pop. Mean	1	1	1	1	1	1	1	1	1	1	1	1
Std. Deviation	0.3	0.3	0.4	0.3	0.5	0.3	0.3	0.3	0.3	0.3	0.3	0.3
% L processed/kg>=0.8	87%	87%	85%	83%	82%	82%	86%	88%	87%	87%	87%	87%



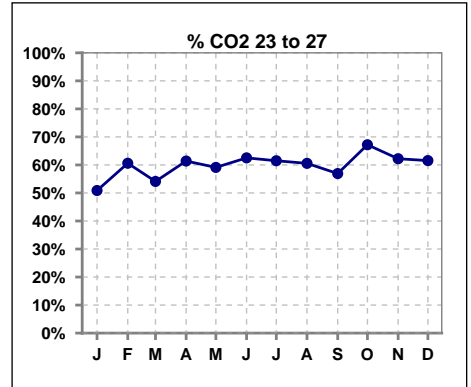
Methodology: a) All labs for 'Adequacy of Dialysis', 'Nutrition', 'Osteodystrophy', 'Anemia' and 'Diabetes' based on last value of month; b) BP's and #L processed are average of all values for month; c) Access data takes last access of month; d) Values for SGA and 'Infection Control' use most recent result.

**I. ADEQUACY OF DIALYSIS - CONT.**

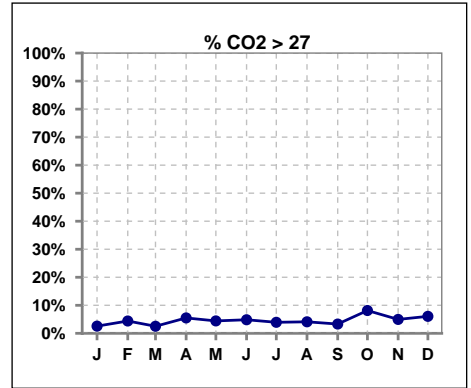
	Jan	Feb	Mar	Apr	May	Jun	Jul	Aug	Sep	Oct	Nov	Dec
# CO2	1482	1480	1473	1474	1470	1489	1501	1486	1481	1500	1514	1519
# CO2 < 23	690	518	639	488	536	486	519	525	589	370	497	492
Pop. Mean	23	23	23	23	23	23	23	23	23	24	24	24
Std. Deviation	2.60	2.55	2.58	2.73	2.66	2.65	2.65	2.72	2.66	2.71	2.62	2.77
<b>% CO2 &lt; 23</b>	<b>47%</b>	<b>35%</b>	<b>43%</b>	<b>33%</b>	<b>36%</b>	<b>33%</b>	<b>35%</b>	<b>35%</b>	<b>40%</b>	<b>25%</b>	<b>33%</b>	<b>32%</b>



	Jan	Feb	Mar	Apr	May	Jun	Jul	Aug	Sep	Oct	Nov	Dec
# CO2	1482	1480	1473	1474	1470	1489	1501	1486	1481	1500	1514	1519
# CO2 23 to 27	754	897	797	905	869	931	923	900	843	1008	942	935
Pop. Mean	23	23	23	23	23	23	23	23	23	24	24	24
Std. Deviation	2.60	2.55	2.58	2.73	2.66	2.65	2.65	2.72	2.66	2.71	2.62	2.77
<b>% CO2 23 to 27</b>	<b>51%</b>	<b>61%</b>	<b>54%</b>	<b>61%</b>	<b>59%</b>	<b>63%</b>	<b>61%</b>	<b>61%</b>	<b>57%</b>	<b>67%</b>	<b>62%</b>	<b>62%</b>



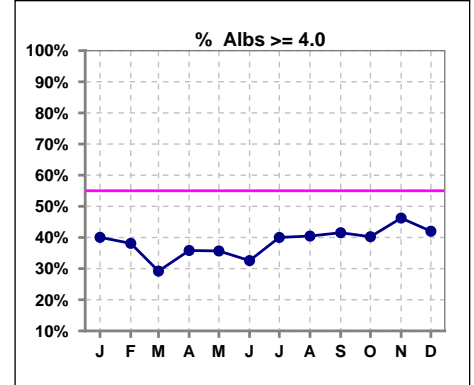
	Jan	Feb	Mar	Apr	May	Jun	Jul	Aug	Sep	Oct	Nov	Dec
# CO2	1482	1480	1473	1474	1470	1489	1501	1486	1481	1500	1514	1519
# CO2 > 27	38	65	37	81	65	72	59	61	49	122	75	92
Pop. Mean	23	23	23	23	23	23	23	23	23	24	24	24
Std. Deviation	2.60	2.55	2.58	2.73	2.66	2.65	2.65	2.72	2.66	2.71	2.62	2.77
<b>% CO2 &gt; 27</b>	<b>3%</b>	<b>4%</b>	<b>3%</b>	<b>5%</b>	<b>4%</b>	<b>5%</b>	<b>4%</b>	<b>4%</b>	<b>3%</b>	<b>8%</b>	<b>5%</b>	<b>6%</b>



\*Albumin values use BCG method - as of July 2001

**II. NUTRITION**

	Jan	Feb	Mar	Apr	May	Jun	Jul	Aug	Sep	Oct	Nov	Dec
# Albumin	1481	1480	1473	1474	1472	1489	1502	1488	1481	1501	1514	1519
# Albumin >= 4.0	593	564	430	528	525	485	601	602	615	604	700	638
Pop. Mean	3.8	3.8	3.7	3.8	3.8	3.8	3.8	3.8	3.8	3.8	3.9	3.8
Std. Deviation	0.41	0.40	0.40	0.40	0.41	0.42	0.41	0.40	0.39	0.40	0.39	0.40
% Alb >= 4.0	40%	38%	29%	36%	36%	33%	40%	40%	42%	40%	46%	42%

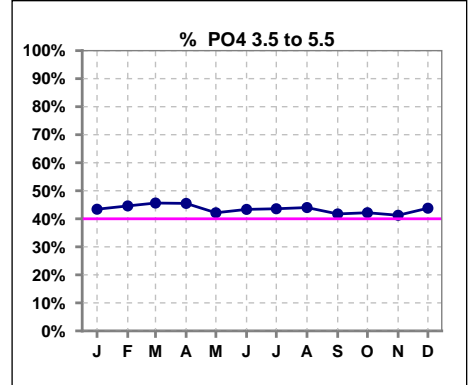


Methodology: a) All labs for 'Adequacy of Dialysis', 'Nutrition', 'Osteodystrophy', 'Anemia' and 'Diabetes' based on last value of month; b) BP's and #L processed are average of all values for month; c) Access data takes last access of month; d) Values for SGA and 'Infection Control' use most recent result.

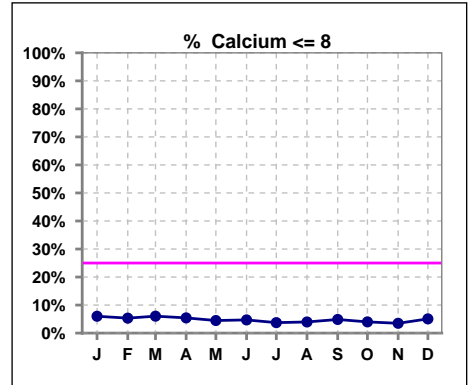
Lab methodology for PTH changed January 2012

**III. OSTEODYSTROPHY**

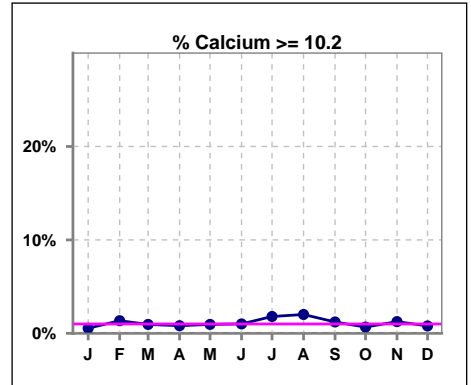
	Jan	Feb	Mar	Apr	May	Jun	Jul	Aug	Sep	Oct	Nov	Dec
# PO4	1481	1480	1473	1475	1471	1490	1503	1486	1481	1501	1515	1519
# PO4 3.5 to 5.5	643	660	672	671	620	646	655	654	618	633	625	665
Pop. Mean	5.8	5.9	5.8	5.8	5.9	5.8	5.9	5.9	5.9	6.0	6.0	5.9
Std. Deviation	1.85	1.93	1.87	1.80	1.84	1.79	1.87	1.90	1.88	1.85	1.91	1.82
% PO4 3.5 to 5.5	43%	45%	46%	45%	42%	43%	44%	44%	42%	42%	41%	44%



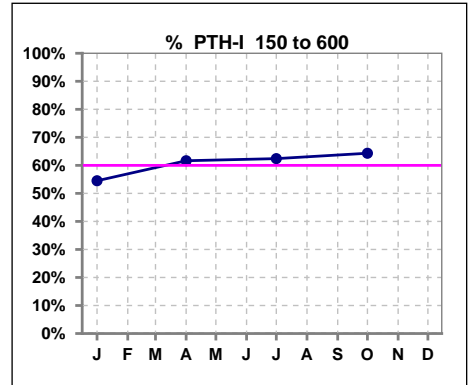
	Jan	Feb	Mar	Apr	May	Jun	Jul	Aug	Sep	Oct	Nov	Dec
# Calcium	1481	1481	1474	1474	1471	1490	1502	1488	1482	1501	1515	1519
# Calcium <= 8	89	79	89	80	66	70	56	59	72	60	53	77
Pop. Mean	9.1	9.2	9.1	9.1	9.2	9.2	9.2	9.3	9.2	9.2	9.3	9.2
Std. Deviation	0.67	0.65	0.65	0.62	0.63	0.65	0.63	0.64	0.62	0.59	0.60	0.62
% Calcium <= 8	6%	5%	6%	5%	4%	5%	4%	4%	5%	4%	3%	5%



	Jan	Feb	Mar	Apr	May	Jun	Jul	Aug	Sep	Oct	Nov	Dec
# Calcium	1481	1481	1474	1474	1471	1490	1502	1488	1482	1501	1515	1519
# Calcium >= 10.2	8	20	14	12	14	15	27	30	18	10	19	12
Pop. Mean	9.1	9.2	9.1	9.1	9.2	9.2	9.2	9.3	9.2	9.2	9.3	9.2
Std. Deviation	0.67	0.65	0.65	0.62	0.63	0.65	0.63	0.64	0.62	0.59	0.60	0.62
% Calcium >= 10.2	1%	1%	1%	1%	1%	1%	2%	2%	1%	1%	1%	1%



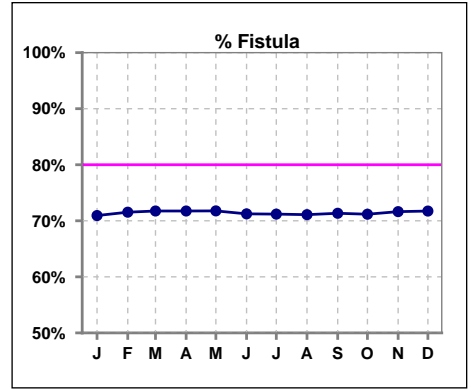
	Jan	Feb	Mar	Apr	May	Jun	Jul	Aug	Sep	Oct	Nov	Dec
# PTH-I	1475			1463			1495			1494		
# PTH-I 150 to 600	804			902			933			961		
Pop. Mean	577			500			501			460		
Std. Deviation	478			468			498			439		
% PTH-I 150 to 600	55%			62%			62%			64%		



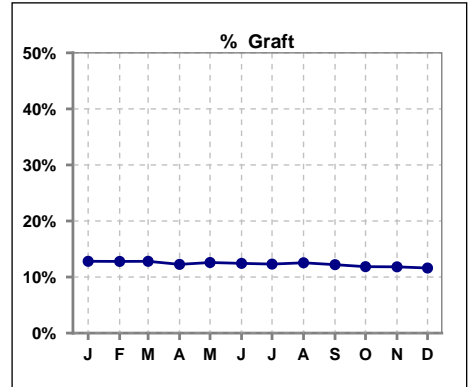
Methodology: a) All labs for 'Adequacy of Dialysis', 'Nutrition', 'Osteodystrophy', 'Anemia' and 'Diabetes' based on last value of month; b) BP's and #L processed are average of all values for month; c) Access data takes last access of month; d) Values for SGA and 'Infection Control' use most recent result.

**IV. ACCESS**

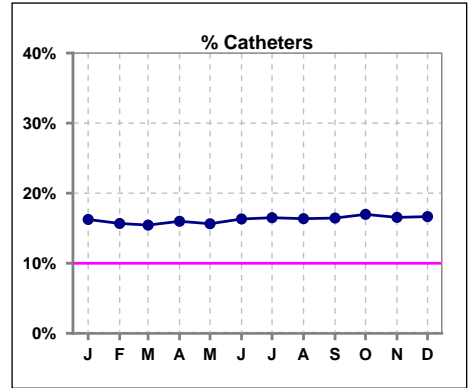
	Jan	Feb	Mar	Apr	May	Jun	Jul	Aug	Sep	Oct	Nov	Dec
<b># Access</b>	1481	1485	1476	1474	1477	1494	1503	1491	1483	1502	1523	1525
<b># Fistula</b>	1052	1063	1059	1059	1060	1065	1070	1060	1058	1069	1091	1094
<b>% Fistula</b>	71%	72%	72%	72%	72%	71%	71%	71%	71%	71%	72%	72%



	Jan	Feb	Mar	Apr	May	Jun	Jul	Aug	Sep	Oct	Nov	Dec
<b># Access</b>	1481	1485	1476	1474	1477	1494	1503	1491	1483	1502	1523	1525
<b># Graft</b>	190	190	189	181	186	186	185	187	181	178	180	177
<b>% Graft</b>	13%	13%	13%	12%	13%	12%	12%	13%	12%	12%	12%	12%



	Jan	Feb	Mar	Apr	May	Jun	Jul	Aug	Sep	Oct	Nov	Dec
<b># Access</b>	1481	1485	1476	1474	1477	1494	1503	1491	1483	1502	1523	1525
<b># Catheters</b>	241	233	228	236	231	244	248	244	244	255	252	254
<b>% Catheters</b>	16%	16%	15%	16%	16%	16%	17%	16%	16%	17%	17%	17%



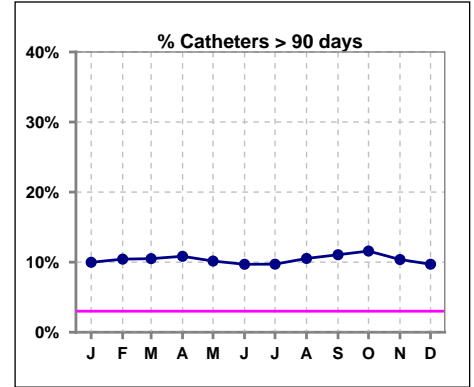
Methodology: a) All labs for 'Adequacy of Dialysis', 'Nutrition', 'Osteodystrophy', 'Anemia' and 'Diabetes' based on last value of month; b) BP's and #L processed are average of all values for month; c) Access data takes last access of month; d) Values for SGA and 'Infection Control' use most recent result.

**IV. ACCESS - CONT.**

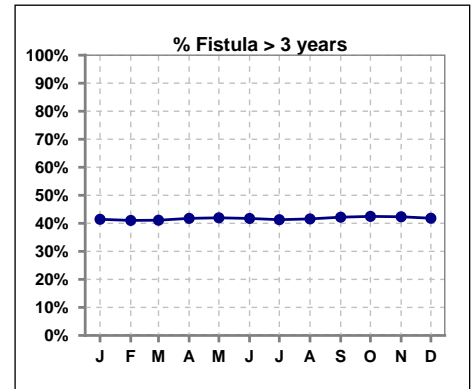
**Catheters > 90 days**

	Jan	Feb	Mar	Apr	May	Jun	Jul	Aug	Sep	Oct	Nov	Dec
<b># Access</b>	1483	1486	1476	1476	1477	1495	1503	1491	1483	1502	1523	1525
<b># Catheters</b>	148	155	155	160	150	145	146	157	164	174	158	148
<b>% Catheters</b>	10%	10%	11%	11%	10%	10%	10%	11%	11%	12%	10%	10%

**Definition:** Catheter in use on last treatment of the month



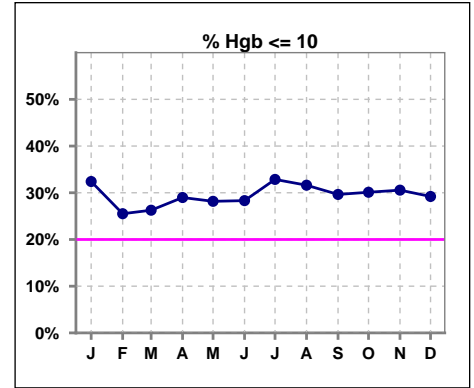
	Jan	Feb	Mar	Apr	May	Jun	Jul	Aug	Sep	Oct	Nov	Dec
<b># Fistula</b>	1062	1082	1080	1075	1077	1078	1080	1068	1069	1083	1103	1112
<b># Fistula &gt; 3 yrs</b>	440	444	444	449	452	450	446	444	451	460	467	465
<b>% Fistula &gt; 3 yrs</b>	41%	41%	41%	42%	42%	42%	41%	42%	42%	42%	42%	42%



**V. ANEMIA**

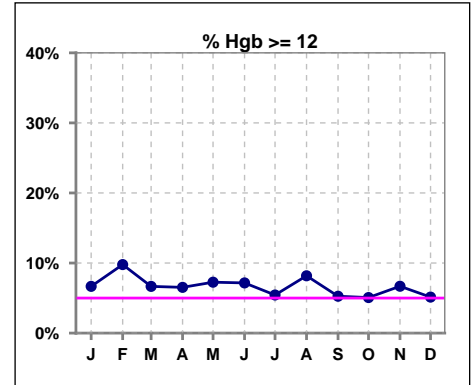
	Jan	Feb	Mar	Apr	May	Jun	Jul	Aug	Sep	Oct	Nov	Dec
# Hgb	1259	1258	1245	1256	1239	1243	1269	1284	1255	1282	1286	1284
# Hgb <= 10	408	321	327	364	349	352	417	406	372	386	393	375
Pop. Mean	10.4	10.6	10.6	10.5	10.5	10.5	10.4	10.5	10.4	10.4	10.4	10.4
Std. Deviation	1.2	1.2	1.1	1.1	1.2	1.2	1.2	1.2	1.1	1.2	1.2	1.2
% Hgb <= 10	32%	26%	26%	29%	28%	28%	33%	32%	30%	30%	31%	29%

Note: Excludes patients who received no ESA in month.



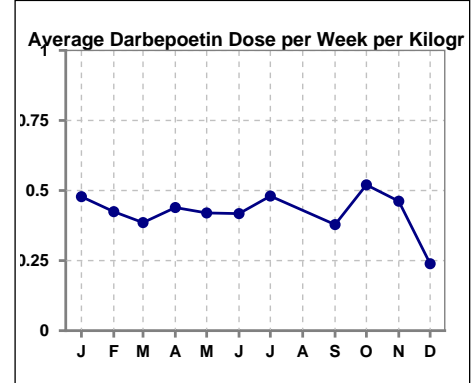
	Jan	Feb	Mar	Apr	May	Jun	Jul	Aug	Sep	Oct	Nov	Dec
# Hgb	1259	1258	1245	1256	1239	1243	1269	1284	1255	1282	1286	1284
# Hgb >= 12	84	123	83	82	90	89	69	105	66	65	86	66
Pop. Mean	10.4	10.6	10.6	10.5	10.5	10.5	10.4	10.5	10.4	10.4	10.4	10.4
Std. Deviation	1.2	1.2	1.1	1.1	1.2	1.2	1.2	1.2	1.1	1.2	1.2	1.2
% Hgb >= 12	7%	10%	7%	7%	7%	7%	5%	8%	5%	5%	7%	5%

Note: Excludes patients who received no ESA in month.



**Average Darbepoetin Dose per Week per Kilogram**

	Jan	Feb	Mar	Apr	May	Jun	Jul	Aug	Sep	Oct	Nov	Dec
# Average Darbepoetin	0.5	0.4	0.4	0.4	0.4	0.4	0.5		0.4	0.5	0.5	0.2

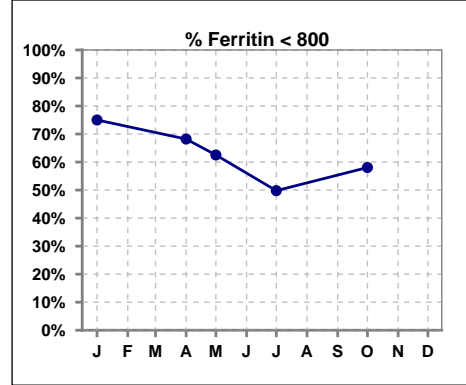




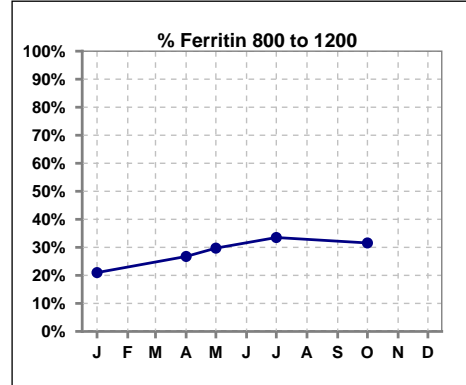
**V. ANEMIA - CONT.**

**Iron Profile**

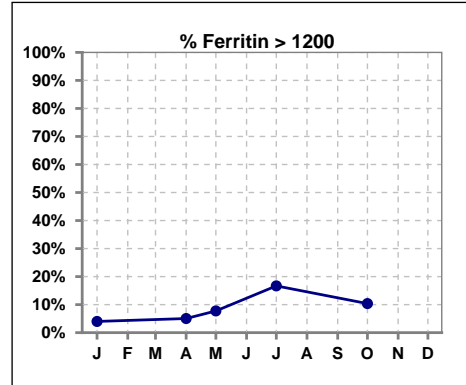
	Jan	Feb	Mar	Apr	May	Jun	Jul	Aug	Sep	Oct	Nov	Dec
# Ferritin	1477			1469	387		1498			1495		
# Ferritin < 800	1108			1002	242		746			868		
Pop. Mean	641			683	730		837			767		
Std. Deviation	415			387	363		505			433		
<b>% Ferritin &lt; 800</b>	<b>75%</b>			<b>68%</b>	<b>63%</b>		<b>50%</b>			<b>58%</b>		



	Jan	Feb	Mar	Apr	May	Jun	Jul	Aug	Sep	Oct	Nov	Dec
# Ferritin	1477			1469	387		1498			1495		
# Ferritin 800 to 1200	310			393	115		502			472		
Pop. Mean	641			683	730		837			767		
Std. Deviation	415			387	363		505			433		
<b>% Ferritin 800 to 1200</b>	<b>21%</b>			<b>27%</b>	<b>30%</b>		<b>34%</b>			<b>32%</b>		

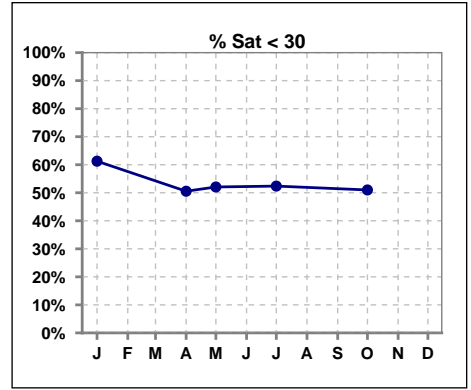


	Jan	Feb	Mar	Apr	May	Jun	Jul	Aug	Sep	Oct	Nov	Dec
# Ferritin	1477			1469	387		1498			1495		
# Ferritin > 1200	59			74	30		250			155		
Pop. Mean	641			683	730		837			767		
Std. Deviation	415			387	363		505			433		
<b>% Ferritin &gt; 1200</b>	<b>4%</b>			<b>5%</b>	<b>8%</b>		<b>17%</b>			<b>10%</b>		

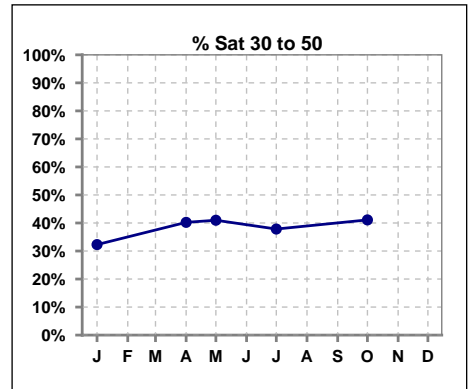


**V. ANEMIA - CONT.**

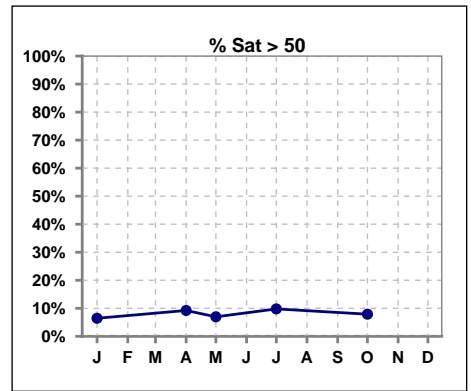
	Jan	Feb	Mar	Apr	May	Jun	Jul	Aug	Sep	Oct	Nov	Dec
# % Sat	1474			1464	388		1493			1494		
# % Sat < 30	903			740	202		782			762		
Pop. Mean	29			32	31		31			32		
Std. Deviation	14			16	14		16			14		
<b>% % Sat &lt; 30</b>	<b>61%</b>			<b>51%</b>	<b>52%</b>		<b>52%</b>			<b>51%</b>		



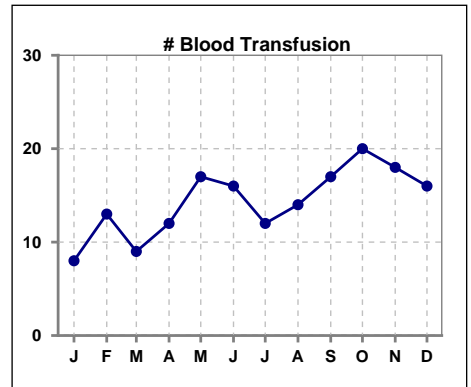
	Jan	Feb	Mar	Apr	May	Jun	Jul	Aug	Sep	Oct	Nov	Dec
# % Sat	1474			1464	388		1493			1494		
# % Sat 30 to 50	476			589	159		565			614		
Pop. Mean	29			32	31		31			32		
Std. Deviation	14			16	14		16			14		
<b>% % Sat 30 to 50</b>	<b>32%</b>			<b>40%</b>	<b>41%</b>		<b>38%</b>			<b>41%</b>		



	Jan	Feb	Mar	Apr	May	Jun	Jul	Aug	Sep	Oct	Nov	Dec
# % Sat	1474			1464	388		1493			1494		
# % Sat > 50	95			135	27		146			118		
Pop. Mean	29			32	31		31			32		
Std. Deviation	14			16	14		16			14		
<b>% % Sat &gt; 50</b>	<b>6%</b>			<b>9%</b>	<b>7%</b>		<b>10%</b>			<b>8%</b>		



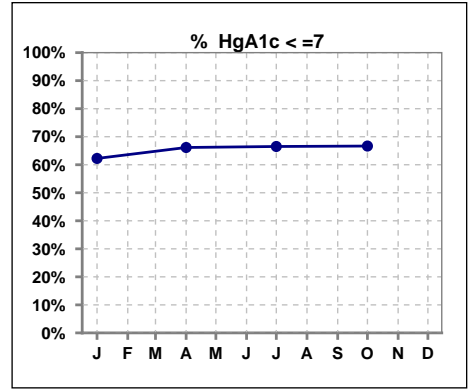
	Jan	Feb	Mar	Apr	May	Jun	Jul	Aug	Sep	Oct	Nov	Dec
# Patient	1487	1489	1480	1480	1480	1501	1505	1491	1490	1507	1527	1531
<b># Blood Transfusion</b>	<b>8</b>	<b>13</b>	<b>9</b>	<b>12</b>	<b>17</b>	<b>16</b>	<b>12</b>	<b>14</b>	<b>17</b>	<b>20</b>	<b>18</b>	<b>16</b>



Methodology: a) All labs for 'Adequacy of Dialysis', 'Nutrition', 'Osteodystrophy', 'Anemia' and 'Diabetes' based on last value of month; b) BP's and #L processed are average of all values for month; c) Access data takes last access of month; d) Values for SGA and 'Infection Control' use most recent result.

**VI. Diabetes**

	Jan	Feb	Mar	Apr	May	Jun	Jul	Aug	Sep	Oct	Nov	Dec
# HgA1c	853			851			860			864		
# HgA1c <= 7	531			563			572			576		
Pop. Mean	6.9			6.7			6.7			6.7		
Std. Deviation	1.51			1.44			1.46			1.45		
<b>% HgA1c &lt;= 7</b>	<b>62%</b>			<b>66%</b>			<b>67%</b>			<b>67%</b>		

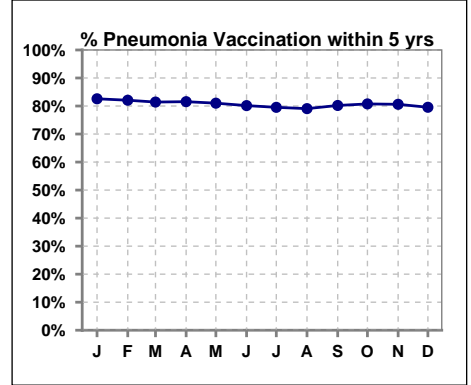


Methodology: a) All labs for 'Adequacy of Dialysis', 'Nutrition', 'Osteodystrophy', 'Anemia' and 'Diabetes' based on last value of month; b) BP's and #L processed are average of all values for month; c) Access data takes last access of month; d) Values for SGA and 'Infection Control' use most recent result.

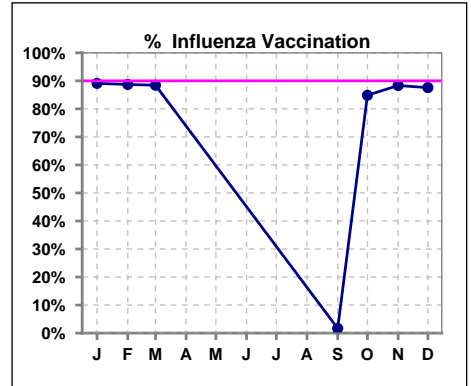
**VII. Infection Control**

**Pneumonia vaccination within the past five years**

	Jan	Feb	Mar	Apr	May	Jun	Jul	Aug	Sep	Oct	Nov	Dec
<b># Patient</b>	1487	1489	1480	1480	1480	1501	1505	1491	1490	1507	1527	1531
<b># Pneumonia</b>	1228	1222	1205	1207	1199	1203	1197	1179	1195	1217	1231	1218
<b>% Pneumonia</b>	83%	82%	81%	82%	81%	80%	80%	79%	80%	81%	81%	80%



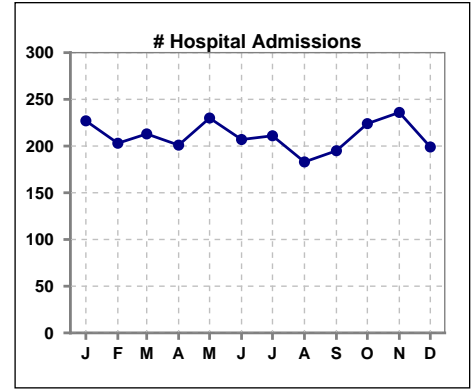
	Jan	Feb	Mar	Apr	May	Jun	Jul	Aug	Sep	Oct	Nov	Dec
<b># Patient</b>	1487	1489	1480						1490	1507	1527	1531
<b># Influenza</b>	1325	1321	1309						25	1279	1349	1341
<b>% Influenza</b>	89%	89%	88%						2%	85%	88%	88%



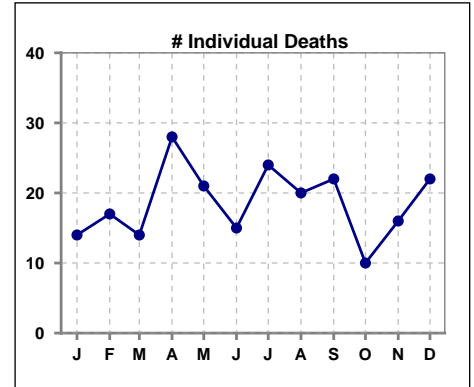
Methodology: a) All labs for 'Adequacy of Dialysis', 'Nutrition', 'Osteodystrophy', 'Anemia' and 'Diabetes' based on last value of month; b) BP's and #L processed are average of all values for month; c) Access data takes last access of month; d) Values for SGA and 'Infection Control' use most recent result.

**VIII. Outcome measures**

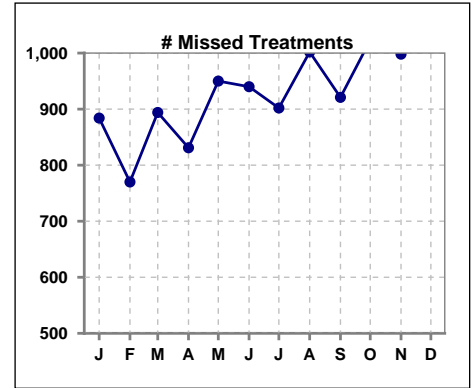
	Jan	Feb	Mar	Apr	May	Jun	Jul	Aug	Sep	Oct	Nov	Dec
<b># Patient</b>	1487	1489	1480	1480	1480	1501	1505	1491	1490	1507	1527	1531
<b># Hospital Admissions</b>	227	203	213	201	230	207	211	183	195	224	236	199



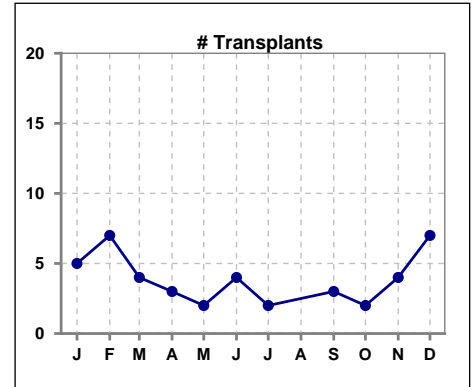
	Jan	Feb	Mar	Apr	May	Jun	Jul	Aug	Sep	Oct	Nov	Dec
<b># Patient</b>	1487	1489	1480	1480	1480	1501	1505	1491	1490	1507	1527	1531
<b># Individual Deaths</b>	14	17	14	28	21	15	24	20	22	10	16	22



	Jan	Feb	Mar	Apr	May	Jun	Jul	Aug	Sep	Oct	Nov	Dec
<b># Patient</b>	1487	1489	1480	1480	1480	1501	1505	1491	1490	1507	1527	1531
<b># Missed Treatments</b>	884	770	894	831	950	940	902	1002	921	1023	998	1155



	Jan	Feb	Mar	Apr	May	Jun	Jul	Aug	Sep	Oct	Nov	Dec
<b># Patient</b>	1487	1489	1480	1480	1480	1501	1505	1491	1490	1507	1527	1531
<b># Transplants</b>	5	7	4	3	2	4	2		3	2	4	7



Methodology: a) All labs for 'Adequacy of Dialysis', 'Nutrition', 'Osteodystrophy', 'Anemia' and 'Diabetes' based on last value of month; b) BP's and #L processed are average of all values for month; c) Access data takes last access of month; d) Values for SGA and 'Infection Control' use most recent result.