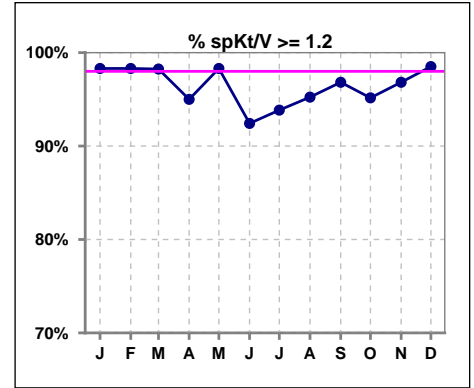
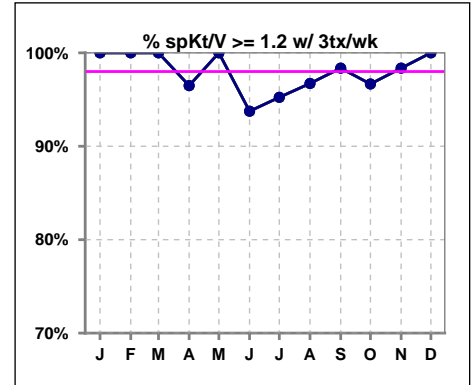


**I. ADEQUACY OF DIALYSIS**

	Jan	Feb	Mar	Apr	May	Jun	Jul	Aug	Sep	Oct	Nov	Dec
# spKt/V	59	59	57	60	59	66	65	63	63	62	63	67
# spKt/V >= 1.2	58	58	56	57	58	61	61	60	61	59	61	66
Pop. Mean	1.69	1.67	1.72	1.68	1.72	1.60	1.63	1.64	1.75	1.63	1.61	1.59
Std. Deviation	0.32	0.32	0.32	0.36	0.34	0.37	0.38	0.33	0.33	0.31	0.29	0.30
% spKt/V >= 1.2	98%	98%	98%	95%	98%	92%	94%	95%	97%	95%	97%	99%



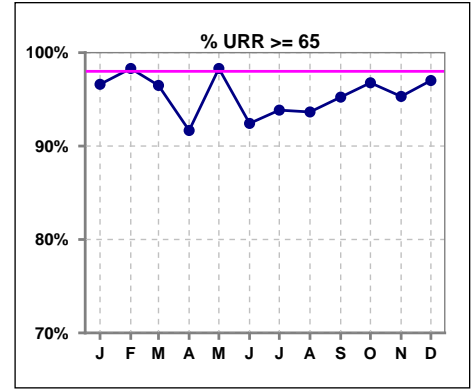
	Jan	Feb	Mar	Apr	May	Jun	Jul	Aug	Sep	Oct	Nov	Dec
# spKt/V w/ 3tx/wk	58	57	55	57	57	64	63	61	61	60	61	65
# spKt/V >= 1.2 w/3tx/wk	58	57	55	55	57	60	60	59	60	58	60	65
Pop. Mean	1.70	1.68	1.73	1.69	1.73	1.61	1.64	1.64	1.76	1.63	1.62	1.59
Std. Deviation	0.31	0.31	0.31	0.34	0.33	0.36	0.37	0.31	0.31	0.30	0.28	0.28
% >= 1.2 w/3tx/wk	100%	100%	100%	96%	100%	94%	95%	97%	98%	97%	98%	100%



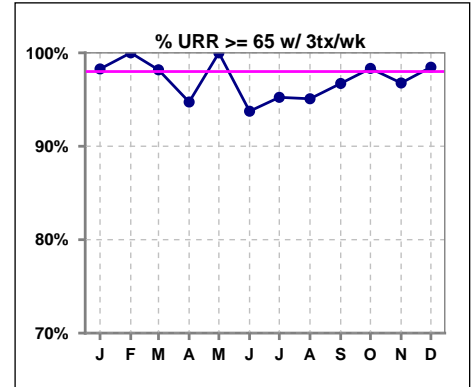
Methodology: a) All labs for 'Adequacy of Dialysis', 'Nutrition', 'Osteodystrophy', 'Anemia' and 'Diabetes' based on last value of month; b) BP's and #L processed are average of all values for month; c) Access data takes last access of month; d) Values for SGA and 'Infection Control' use most recent result.

**I. ADEQUACY OF DIALYSIS - CONT.**

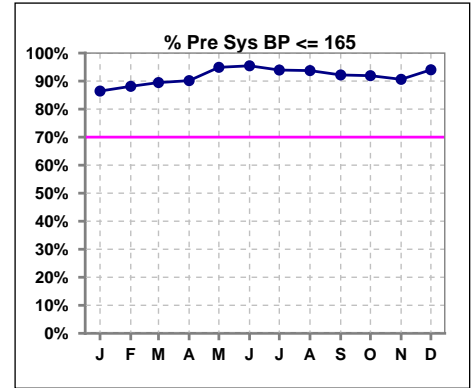
	Jan	Feb	Mar	Apr	May	Jun	Jul	Aug	Sep	Oct	Nov	Dec
# URR	59	59	57	60	59	66	65	63	63	62	64	67
# URR >= 65	57	58	55	55	58	61	61	59	60	60	61	65
Pop. Mean	76	76	77	76	77	74	75	75	78	75	74	75
Std. Deviation	6.24	6.30	5.91	6.96	6.27	8.70	8.50	6.53	6.33	6.04	7.69	5.74
% URR >= 65	97%	98%	96%	92%	98%	92%	94%	94%	95%	97%	95%	97%



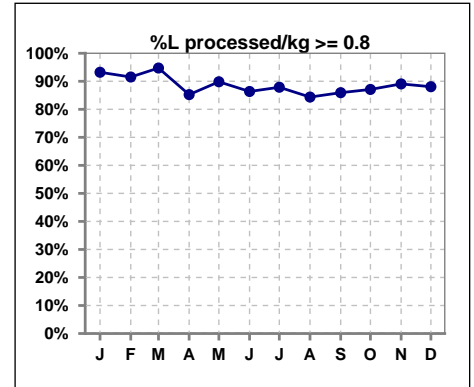
	Jan	Feb	Mar	Apr	May	Jun	Jul	Aug	Sep	Oct	Nov	Dec
# URR w/ 3tx/wk	58	57	55	57	57	64	63	61	61	60	62	65
# URR>=65 w/ 3tx/wk	57	57	54	54	57	60	60	58	59	59	60	64
Pop. Mean	77	76	77	76	77	74	75	76	78	75	75	75
Std. Deviation	5.65	5.85	5.49	6.16	5.59	8.33	7.98	5.88	5.56	5.43	7.44	5.17
% URR>=65 w/ 3tx/wk	98%	100%	98%	95%	100%	94%	95%	95%	97%	98%	97%	98%



	Jan	Feb	Mar	Apr	May	Jun	Jul	Aug	Sep	Oct	Nov	Dec
# Pre Sys BP	59	59	57	61	59	66	66	64	64	62	64	67
# Pre Sys BP <= 165	51	52	51	55	56	63	62	60	59	57	59	63
Pop. Mean	141	143	140	139	136	135	133	135	136	137	137	138
Std. Deviation	23.1	21.3	21.5	20.8	21.0	19.5	18.9	18.7	21.8	19.6	20.6	19.4
% Pre Sys BP <=165	86%	88%	89%	90%	95%	95%	94%	94%	92%	92%	91%	94%

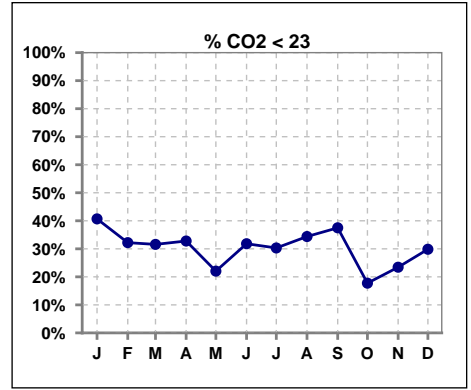


	Jan	Feb	Mar	Apr	May	Jun	Jul	Aug	Sep	Oct	Nov	Dec
# L processed/kg	59	59	57	61	59	66	66	64	64	62	64	67
# L processed/kg>=0.8	55	54	54	52	53	57	58	54	55	54	57	59
Pop. Mean	1	1	1	1	1	1	1	1	1	1	1	1
Std. Deviation	0.3	0.3	0.3	0.3	0.3	0.3	0.3	0.3	0.3	0.3	0.3	0.3
% L processed/kg>=0.8	93%	92%	95%	85%	90%	86%	88%	84%	86%	87%	89%	88%

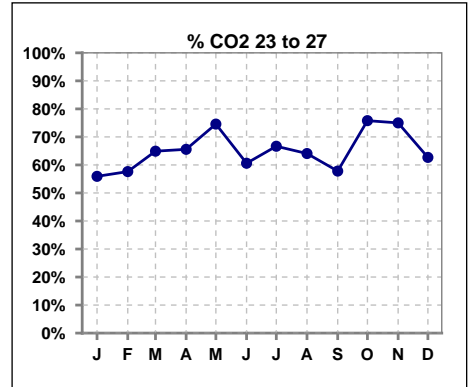


**I. ADEQUACY OF DIALYSIS - CONT.**

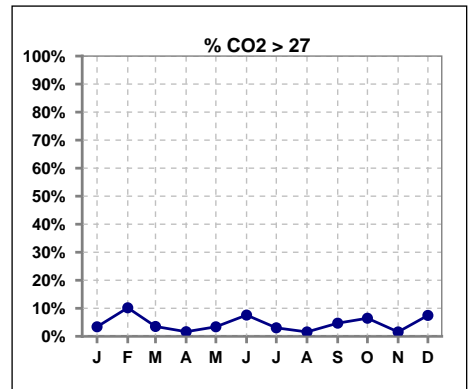
	Jan	Feb	Mar	Apr	May	Jun	Jul	Aug	Sep	Oct	Nov	Dec
# CO2	59	59	57	61	59	66	66	64	64	62	64	67
# CO2 < 23	24	19	18	20	13	21	20	22	24	11	15	20
Pop. Mean	23	24	23	23	24	24	24	23	24	24	24	24
Std. Deviation	2.14	2.49	2.34	2.80	2.81	2.57	2.33	2.36	2.27	2.41	2.28	2.39
% CO2 < 23	41%	32%	32%	33%	22%	32%	30%	34%	38%	18%	23%	30%



	Jan	Feb	Mar	Apr	May	Jun	Jul	Aug	Sep	Oct	Nov	Dec
# CO2	59	59	57	61	59	66	66	64	64	62	64	67
# CO2 23 to 27	33	34	37	40	44	40	44	41	37	47	48	42
Pop. Mean	23	24	23	23	24	24	24	23	24	24	24	24
Std. Deviation	2.14	2.49	2.34	2.80	2.81	2.57	2.33	2.36	2.27	2.41	2.28	2.39
% CO2 23 to 27	56%	58%	65%	66%	75%	61%	67%	64%	58%	76%	75%	63%



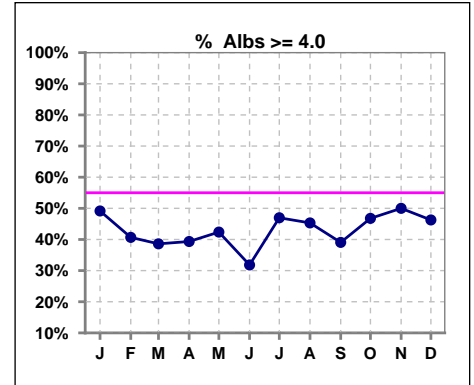
	Jan	Feb	Mar	Apr	May	Jun	Jul	Aug	Sep	Oct	Nov	Dec
# CO2	59	59	57	61	59	66	66	64	64	62	64	67
# CO2 > 27	2	6	2	1	2	5	2	1	3	4	1	5
Pop. Mean	23	24	23	23	24	24	24	23	24	24	24	24
Std. Deviation	2.14	2.49	2.34	2.80	2.81	2.57	2.33	2.36	2.27	2.41	2.28	2.39
% CO2 > 27	3%	10%	4%	2%	3%	8%	3%	2%	5%	6%	2%	7%



\*Albumin values use BCG method - as of July 2001

**II. NUTRITION**

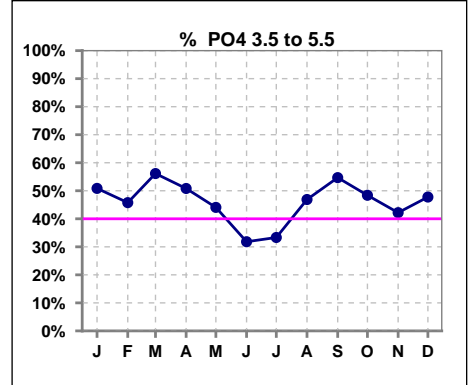
	Jan	Feb	Mar	Apr	May	Jun	Jul	Aug	Sep	Oct	Nov	Dec
# Albumin	59	59	57	61	59	66	66	64	64	62	64	67
# Albumin >= 4.0	29	24	22	24	25	21	31	29	25	29	32	31
Pop. Mean	3.8	3.9	3.8	3.8	3.8	3.7	3.8	3.8	3.8	3.9	3.9	3.9
Std. Deviation	0.45	0.36	0.38	0.49	0.53	0.54	0.45	0.44	0.44	0.41	0.42	0.36
% Alb >= 4.0	49%	41%	39%	39%	42%	32%	47%	45%	39%	47%	50%	46%



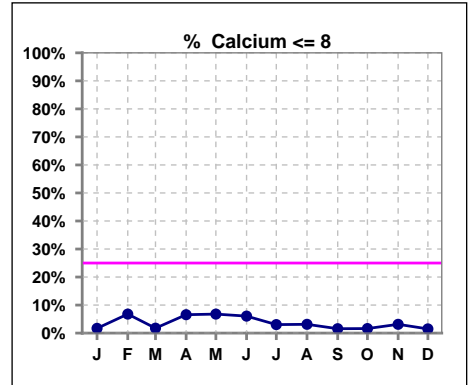
Lab methodology for PTH changed January 2012

**III. OSTEODYSTROPHY**

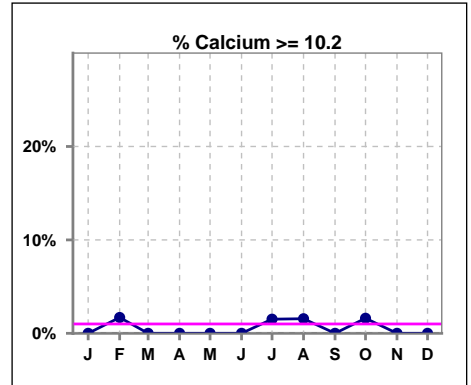
	Jan	Feb	Mar	Apr	May	Jun	Jul	Aug	Sep	Oct	Nov	Dec
# PO4	59	59	57	61	59	66	66	64	64	62	64	67
# PO4 3.5 to 5.5	30	27	32	31	26	21	22	30	35	30	27	32
Pop. Mean	5.3	5.6	5.6	5.9	5.6	6.0	6.0	5.8	5.6	5.8	6.0	5.7
Std. Deviation	1.49	1.62	1.55	2.08	1.83	1.61	1.69	1.84	1.95	1.62	1.78	1.85
% PO4 3.5 to 5.5	51%	46%	56%	51%	44%	32%	33%	47%	55%	48%	42%	48%



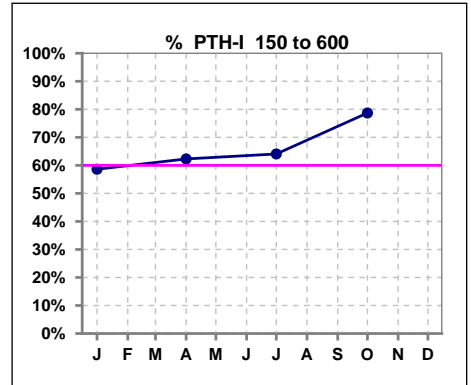
	Jan	Feb	Mar	Apr	May	Jun	Jul	Aug	Sep	Oct	Nov	Dec
# Calcium	59	59	57	61	59	66	66	64	64	62	64	67
# Calcium <= 8	1	4	1	4	4	4	2	2	1	1	2	1
Pop. Mean	9.2	9.2	9.1	9.0	9.1	9.2	9.2	9.3	9.2	9.3	9.2	9.3
Std. Deviation	0.51	0.68	0.50	0.59	0.58	0.57	0.55	0.54	0.49	0.54	0.49	0.47
% Calcium <= 8	2%	7%	2%	7%	7%	6%	3%	3%	2%	2%	3%	1%



	Jan	Feb	Mar	Apr	May	Jun	Jul	Aug	Sep	Oct	Nov	Dec
# Calcium	59	59	57	61	59	66	66	64	64	62	64	67
# Calcium >= 10.2	0	1	0	0	0	0	1	1	0	1	0	0
Pop. Mean	9.2	9.2	9.1	9.0	9.1	9.2	9.2	9.3	9.2	9.3	9.2	9.3
Std. Deviation	0.51	0.68	0.50	0.59	0.58	0.57	0.55	0.54	0.49	0.54	0.49	0.47
% Calcium >= 10.2	0%	2%	0%	0%	0%	0%	2%	2%	0%	2%	0%	0%



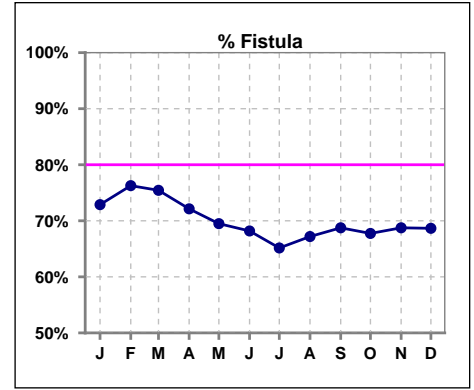
	Jan	Feb	Mar	Apr	May	Jun	Jul	Aug	Sep	Oct	Nov	Dec
# PTH-I	58			61			64			61		
# PTH-I 150 to 600	34			38			41			48		
Pop. Mean	501			429			456			417		
Std. Deviation	312			404			359			309		
% PTH-I 150 to 600	59%			62%			64%			79%		



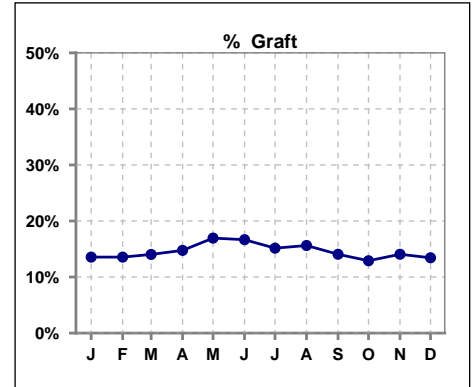
Methodology: a) All labs for 'Adequacy of Dialysis', 'Nutrition', 'Osteodystrophy', 'Anemia' and 'Diabetes' based on last value of month; b) BP's and #L processed are average of all values for month; c) Access data takes last access of month; d) Values for SGA and 'Infection Control' use most recent result.

**IV. ACCESS**

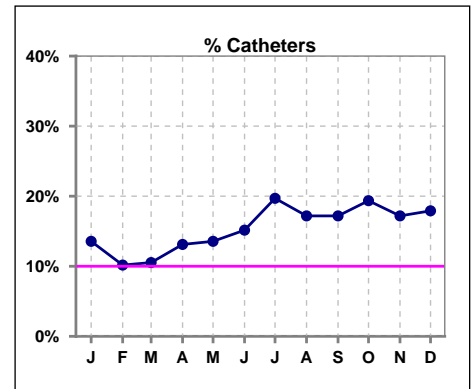
	Jan	Feb	Mar	Apr	May	Jun	Jul	Aug	Sep	Oct	Nov	Dec
# Access	59	59	57	60	59	66	66	64	64	62	64	67
# Fistula	43	45	43	44	41	45	43	43	44	42	44	46
% Fistula	73%	76%	75%	72%	69%	68%	65%	67%	69%	68%	69%	69%



	Jan	Feb	Mar	Apr	May	Jun	Jul	Aug	Sep	Oct	Nov	Dec
# Access	59	59	57	60	59	66	66	64	64	62	64	67
# Graft	8	8	8	9	10	11	10	10	9	8	9	9
% Graft	14%	14%	14%	15%	17%	17%	15%	16%	14%	13%	14%	13%



	Jan	Feb	Mar	Apr	May	Jun	Jul	Aug	Sep	Oct	Nov	Dec
# Access	59	59	57	60	59	66	66	64	64	62	64	67
# Catheters	8	6	6	8	8	10	13	11	11	12	11	12
% Catheters	14%	10%	11%	13%	14%	15%	20%	17%	17%	19%	17%	18%



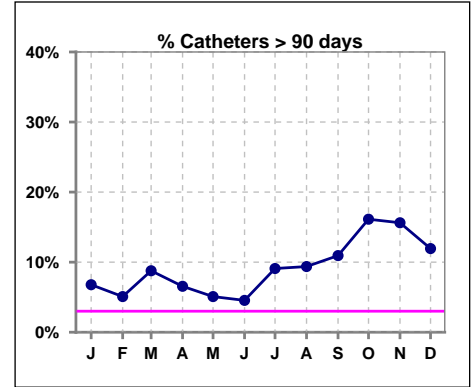
Methodology: a) All labs for 'Adequacy of Dialysis', 'Nutrition', 'Osteodystrophy', 'Anemia' and 'Diabetes' based on last value of month; b) BP's and #L processed are average of all values for month; c) Access data takes last access of month; d) Values for SGA and 'Infection Control' use most recent result.

**IV. ACCESS - CONT.**

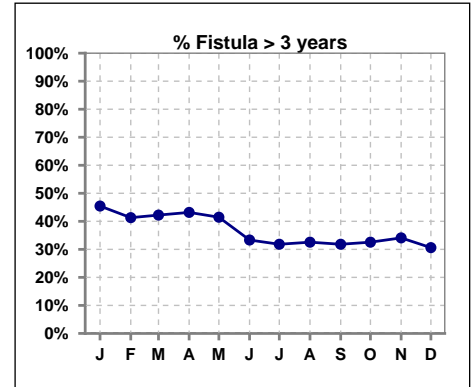
**Catheters > 90 days**

	Jan	Feb	Mar	Apr	May	Jun	Jul	Aug	Sep	Oct	Nov	Dec
<b># Access</b>	59	59	57	61	59	66	66	64	64	62	64	67
<b># Catheters</b>	4	3	5	4	3	3	6	6	7	10	10	8
<b>% Catheters</b>	7%	5%	9%	7%	5%	5%	9%	9%	11%	16%	16%	12%

**Definition:** Catheter in use on last treatment of the month



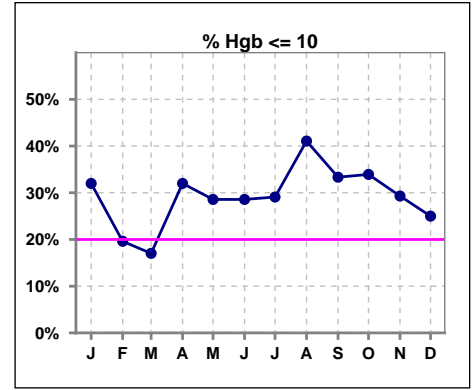
	Jan	Feb	Mar	Apr	May	Jun	Jul	Aug	Sep	Oct	Nov	Dec
<b># Fistula</b>	44	46	45	44	41	45	44	43	44	43	44	49
<b># Fistula &gt; 3 yrs</b>	20	19	19	19	17	15	14	14	14	14	15	15
<b>% Fistula &gt; 3 yrs</b>	45%	41%	42%	43%	41%	33%	32%	33%	32%	33%	34%	31%



**V. ANEMIA**

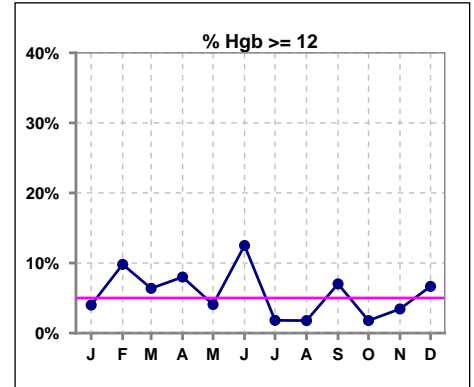
	Jan	Feb	Mar	Apr	May	Jun	Jul	Aug	Sep	Oct	Nov	Dec
# Hgb	50	51	47	50	49	56	55	56	57	56	58	60
# Hgb <= 10	16	10	8	16	14	16	16	23	19	19	17	15
Pop. Mean	10.2	10.9	10.9	10.5	10.5	10.5	10.5	10.3	10.3	10.2	10.4	10.7
Std. Deviation	1.3	1.1	1.0	1.2	1.1	1.5	1.0	1.0	1.2	1.3	1.3	1.2
% Hgb <= 10	32%	20%	17%	32%	29%	29%	29%	41%	33%	34%	29%	25%

Note: Excludes patients who received no ESA in month.



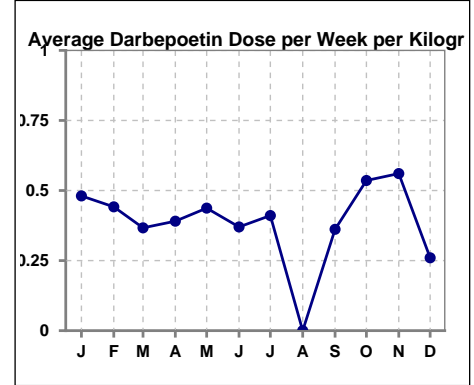
	Jan	Feb	Mar	Apr	May	Jun	Jul	Aug	Sep	Oct	Nov	Dec
# Hgb	50	51	47	50	49	56	55	56	57	56	58	60
# Hgb >= 12	2	5	3	4	2	7	1	1	4	1	2	4
Pop. Mean	10.2	10.9	10.9	10.5	10.5	10.5	10.5	10.3	10.3	10.2	10.4	10.7
Std. Deviation	1.3	1.1	1.0	1.2	1.1	1.5	1.0	1.0	1.2	1.3	1.3	1.2
% Hgb >= 12	4%	10%	6%	8%	4%	13%	2%	2%	7%	2%	3%	7%

Note: Excludes patients who received no ESA in month.



**Average Darbepoetin Dose per Week per Kilogram**

	Jan	Feb	Mar	Apr	May	Jun	Jul	Aug	Sep	Oct	Nov	Dec
# Average Darbepoetin	.5	.4	.4	.4	.4	.4	.4	0	.4	.5	.6	.3

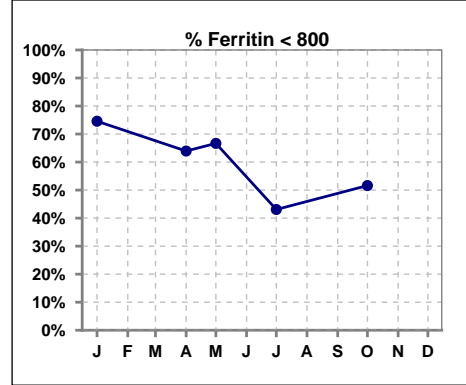




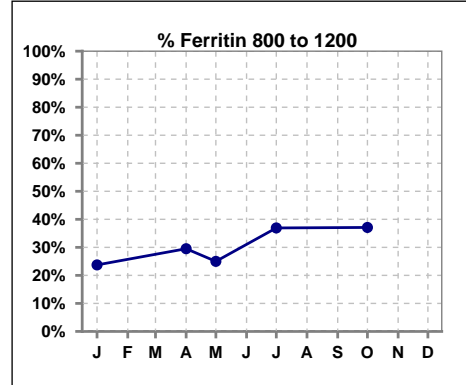
**V. ANEMIA - CONT.**

**Iron Profile**

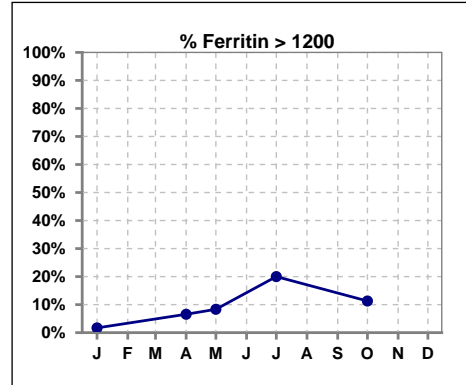
	Jan	Feb	Mar	Apr	May	Jun	Jul	Aug	Sep	Oct	Nov	Dec
# Ferritin	59			61	12		65			62		
# Ferritin < 800	44			39	8		28			32		
Pop. Mean	630			707	771		842			803		
Std. Deviation	272			313	388		376			326		
<b>% Ferritin &lt; 800</b>	<b>75%</b>			<b>64%</b>	<b>67%</b>		<b>43%</b>			<b>52%</b>		



	Jan	Feb	Mar	Apr	May	Jun	Jul	Aug	Sep	Oct	Nov	Dec
# Ferritin	59			61	12		65			62		
# Ferritin 800 to 1200	14			18	3		24			23		
Pop. Mean	630			707	771		842			803		
Std. Deviation	272			313	388		376			326		
<b>% Ferritin 800 to 1200</b>	<b>24%</b>			<b>30%</b>	<b>25%</b>		<b>37%</b>			<b>37%</b>		

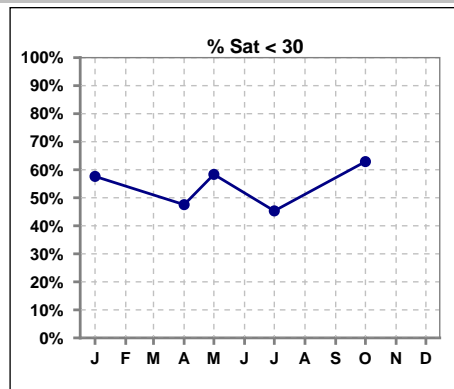


	Jan	Feb	Mar	Apr	May	Jun	Jul	Aug	Sep	Oct	Nov	Dec
# Ferritin	59			61	12		65			62		
# Ferritin > 1200	1			4	1		13			7		
Pop. Mean	630			707	771		842			803		
Std. Deviation	272			313	388		376			326		
<b>% Ferritin &gt; 1200</b>	<b>2%</b>			<b>7%</b>	<b>8%</b>		<b>20%</b>			<b>11%</b>		

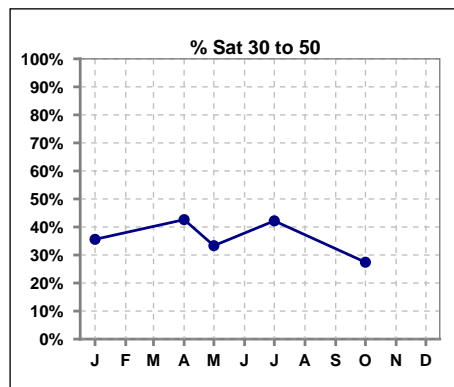


**V. ANEMIA - CONT.**

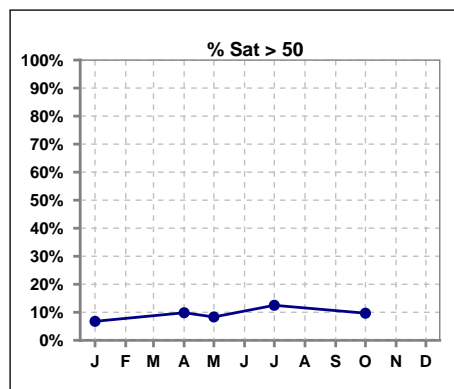
	Jan	Feb	Mar	Apr	May	Jun	Jul	Aug	Sep	Oct	Nov	Dec
# % Sat	59			61	12		64			62		
# % Sat < 30	34			29	7		29			39		
Pop. Mean	31			33	32		34			31		
Std. Deviation	16			18	26		21			15		
<b>% % Sat &lt; 30</b>	<b>58%</b>			<b>48%</b>	<b>58%</b>		<b>45%</b>			<b>63%</b>		



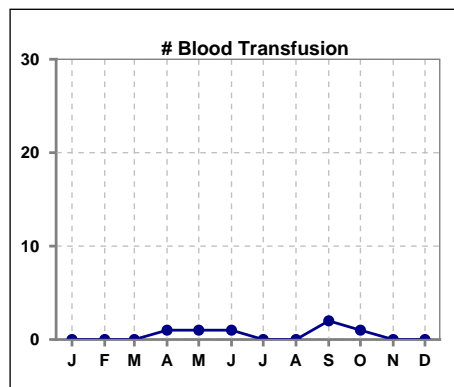
	Jan	Feb	Mar	Apr	May	Jun	Jul	Aug	Sep	Oct	Nov	Dec
# % Sat	59			61	12		64			62		
# % Sat 30 to 50	21			26	4		27			17		
Pop. Mean	31			33	32		34			31		
Std. Deviation	16			18	26		21			15		
<b>% % Sat 30 to 50</b>	<b>36%</b>			<b>43%</b>	<b>33%</b>		<b>42%</b>			<b>27%</b>		



	Jan	Feb	Mar	Apr	May	Jun	Jul	Aug	Sep	Oct	Nov	Dec
# % Sat	59			61	12		64			62		
# % Sat > 50	4			6	1		8			6		
Pop. Mean	31			33	32		34			31		
Std. Deviation	16			18	26		21			15		
<b>% % Sat &gt; 50</b>	<b>7%</b>			<b>10%</b>	<b>8%</b>		<b>13%</b>			<b>10%</b>		



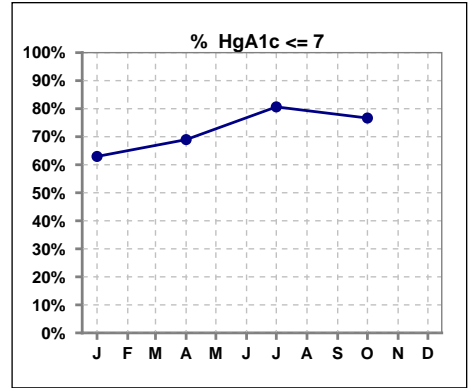
	Jan	Feb	Mar	Apr	May	Jun	Jul	Aug	Sep	Oct	Nov	Dec
# Patient	59	59	57	61	59	66	66	64	64	62	64	67
# Blood Transfusion	0	0	0	1	1	1	0	0	2	1	0	0



Methodology: a) All labs for 'Adequacy of Dialysis', 'Nutrition', 'Osteodystrophy', 'Anemia' and 'Diabetes' based on last value of month; b) BP's and #L processed are average of all values for month; c) Access data takes last access of month; d) Values for SGA and 'Infection Control' use most recent result.

**VI. Diabetes**

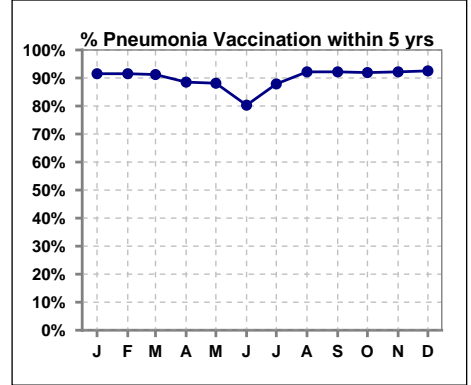
	Jan	Feb	Mar	Apr	May	Jun	Jul	Aug	Sep	Oct	Nov	Dec
# HgA1c	27			29			31			30		
# HgA1c <= 7	17			20			25			23		
Pop. Mean	6.8			6.3			6.3			6.3		
Std. Deviation	1.45			1.04			1.20			0.98		
<b>% HgA1c &lt;= 7</b>	<b>63%</b>			<b>69%</b>			<b>81%</b>			<b>77%</b>		



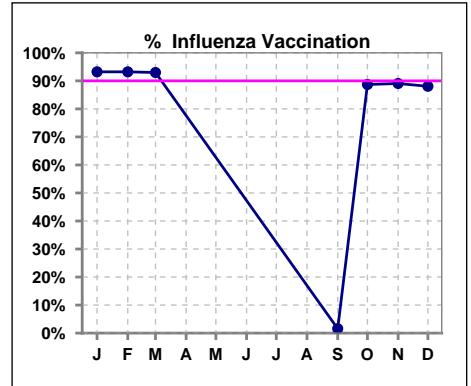
**VII. Infection Control**

**Pneumonia vaccination within the past five years**

	Jan	Feb	Mar	Apr	May	Jun	Jul	Aug	Sep	Oct	Nov	Dec
# Patient	59	59	57	61	59	66	66	64	64	62	64	67
# Pneumonia	54	54	52	54	52	53	58	59	59	57	59	62
% Pneumonia	92%	92%	91%	89%	88%	80%	88%	92%	92%	92%	92%	93%



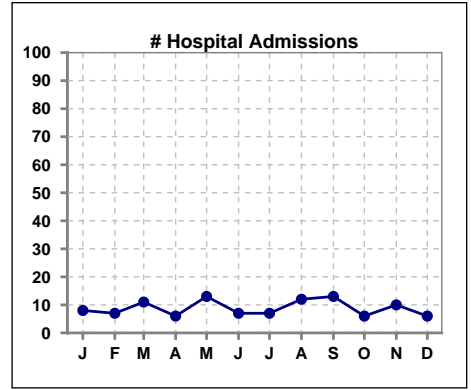
	Jan	Feb	Mar	Apr	May	Jun	Jul	Aug	Sep	Oct	Nov	Dec
# Patient	59	59	57						64	62	64	67
# Influenza	55	55	53						1	55	57	59
% Influenza	93%	93%	93%						2%	89%	89%	88%



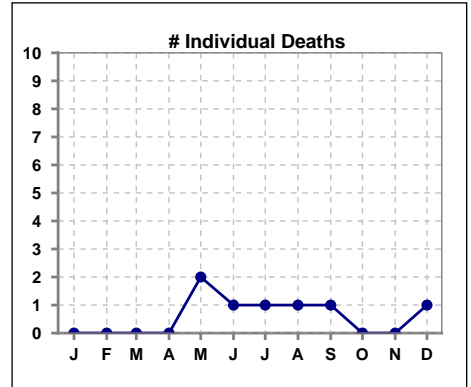
Methodology: a) All labs for 'Adequacy of Dialysis', 'Nutrition', 'Osteodystrophy', 'Anemia' and 'Diabetes' based on last value of month; b) BP's and #L processed are average of all values for month; c) Access data takes last access of month; d) Values for SGA and 'Infection Control' use most recent result.

**VIII. Outcome measures**

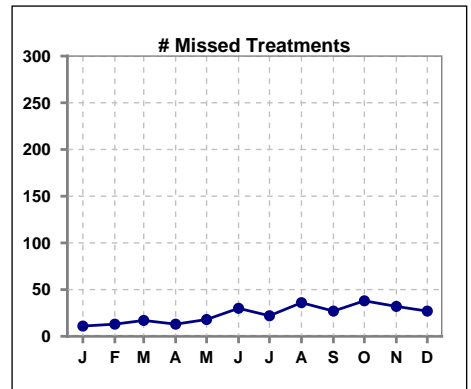
	Jan	Feb	Mar	Apr	May	Jun	Jul	Aug	Sep	Oct	Nov	Dec
# Patient	59	59	57	61	59	66	66	64	64	62	64	67
# Hospital Admissions	8	7	11	6	13	7	7	12	13	6	10	6



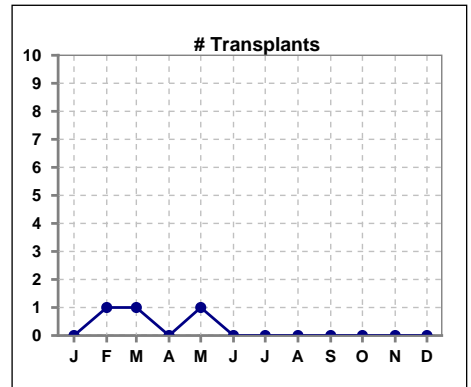
	Jan	Feb	Mar	Apr	May	Jun	Jul	Aug	Sep	Oct	Nov	Dec
# Patient	59	59	57	61	59	66	66	64	64	62	64	67
# Individual Deaths	0	0	0	0	2	1	1	1	1	0	0	1



	Jan	Feb	Mar	Apr	May	Jun	Jul	Aug	Sep	Oct	Nov	Dec
# Patient	59	59	57	61	59	66	66	64	64	62	64	67
# Missed Treatments	11	13	17	13	18	30	22	36	27	38	32	27



	Jan	Feb	Mar	Apr	May	Jun	Jul	Aug	Sep	Oct	Nov	Dec
# Patient	59	59	57	61	59	66	66	64	64	62	64	67
# Transplants	0	1	1	0	1	0	0	0	0	0	0	0



Methodology: a) All labs for 'Adequacy of Dialysis', 'Nutrition', 'Osteodystrophy', 'Anemia' and 'Diabetes' based on last value of month; b) BP's and #L processed are average of all values for month; c) Access data takes last access of month; d) Values for SGA and 'Infection Control' use most recent result.