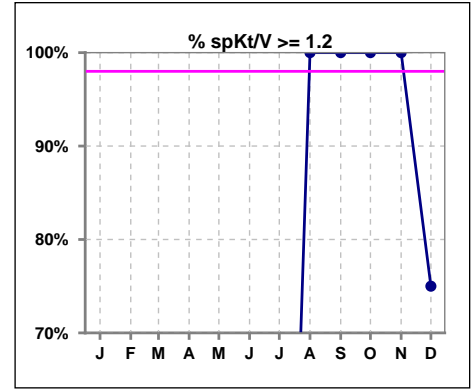
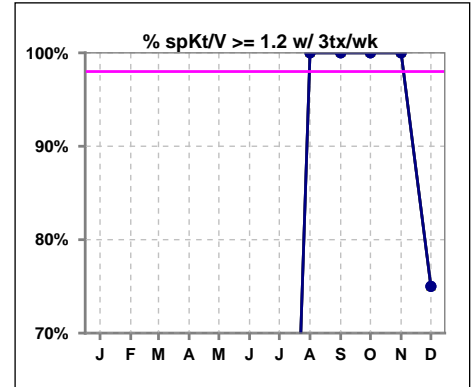


I. ADEQUACY OF DIALYSIS

	Jan	Feb	Mar	Apr	May	Jun	Jul	Aug	Sep	Oct	Nov	Dec
# spKt/V	0	0	0	0	0	0	1	1	1	2	2	4
# spKt/V >= 1.2	0	0	0	0	0	0	0	1	1	2	2	3
Pop. Mean	0	0	0	0	0	0	1.17	1.63	1.66	1.98	1.90	1.47
Std. Deviation	0	0	0	0	0	0	0	0	0	0.43	0.67	0.43
% spKt/V >= 1.2	0%	0%	0%	0%	0%	0%	0%	100%	100%	100%	100%	75%



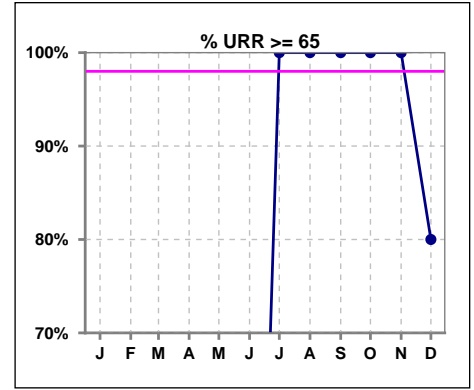
	Jan	Feb	Mar	Apr	May	Jun	Jul	Aug	Sep	Oct	Nov	Dec
# spKt/V w/ 3tx/wk	0	0	0	0	0	0	1	1	1	2	2	4
# spKt/V >= 1.2 w/3tx/wk	0	0	0	0	0	0	0	1	1	2	2	3
Pop. Mean	0	0	0	0	0	0	1.17	1.63	1.66	1.98	1.90	1.47
Std. Deviation	0	0	0	0	0	0	0	0	0	0.43	0.67	0.43
% >= 1.2 w/3tx/wk	0%	0%	0%	0%	0%	0%	0%	100%	100%	100%	100%	75%



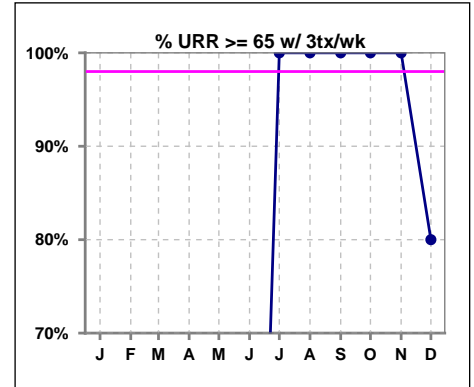
Methodology: a) All labs for 'Adequacy of Dialysis', 'Nutrition', 'Osteodystrophy', 'Anemia' and 'Diabetes' based on last value of month; b) BP's and #L processed are average of all values for month; c) Access data takes last access of month; d) Values for SGA and 'Infection Control' use most recent result.

I. ADEQUACY OF DIALYSIS - CONT.

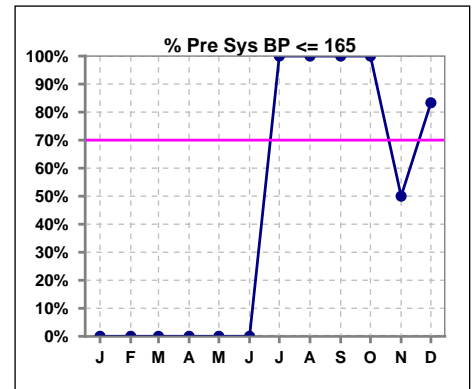
	Jan	Feb	Mar	Apr	May	Jun	Jul	Aug	Sep	Oct	Nov	Dec
# URR	0	0	0	0	0	0	1	1	1	2	2	5
# URR >= 65	0	0	0	0	0	0	1	1	1	2	2	4
Pop. Mean	0	0	0	0	0	0	66	76	75	82	79	71
Std. Deviation	0	0	0	0	0	0	0	0	0	5.73	9.86	9.00
% URR >= 65	0%	0%	0%	0%	0%	0%	100%	100%	100%	100%	100%	80%



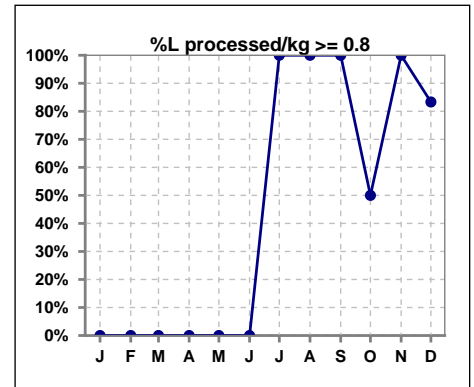
	Jan	Feb	Mar	Apr	May	Jun	Jul	Aug	Sep	Oct	Nov	Dec
# URR w/ 3tx/wk	0	0	0	0	0	0	1	1	1	2	2	5
# URR>=65 w/ 3tx/wk	0	0	0	0	0	0	1	1	1	2	2	4
Pop. Mean	0	0	0	0	0	0	66	76	75	82	79	71
Std. Deviation	0	0	0	0	0	0	0	0	0	5.73	9.86	9.00
% URR>=65 w/ 3tx/wk	0%	0%	0%	0%	0%	0%	100%	100%	100%	100%	100%	80%



	Jan	Feb	Mar	Apr	May	Jun	Jul	Aug	Sep	Oct	Nov	Dec
# Pre Sys BP	0	0	0	0	0	0	1	1	1	2	2	6
# Pre Sys BP <= 165	0	0	0	0	0	0	1	1	1	2	1	5
Pop. Mean	0	0	0	0	0	0	138	121	102	148	152	152
Std. Deviation	0	0	0	0	0	0	0	0	0	16.5	20.8	25.2
% Pre Sys BP <= 165	0%	0%	0%	0%	0%	0%	100%	100%	100%	100%	50%	83%



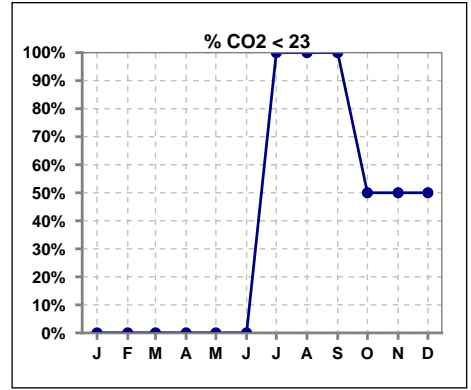
	Jan	Feb	Mar	Apr	May	Jun	Jul	Aug	Sep	Oct	Nov	Dec
# L processed/kg	0	0	0	0	0	0	1	1	1	2	2	6
# L processed/kg>=0.8	0	0	0	0	0	0	1	1	1	1	2	5
Pop. Mean	0	0	0	0	0	0	1	1	1	1	1	1
Std. Deviation	0	0	0	0	0	0	0	0	0	0.3	0.4	0.2
% L processed/kg>=0.8	0%	0%	0%	0%	0%	0%	100%	100%	100%	50%	100%	83%



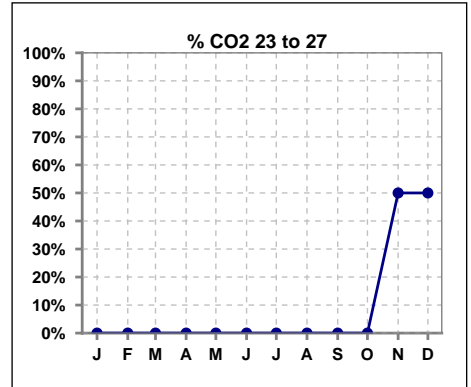
Methodology: a) All labs for 'Adequacy of Dialysis', 'Nutrition', 'Osteodystrophy', 'Anemia' and 'Diabetes' based on last value of month; b) BP's and #L processed are average of all values for month; c) Access data takes last access of month; d) Values for SGA and 'Infection Control' use most recent result.

I. ADEQUACY OF DIALYSIS - CONT.

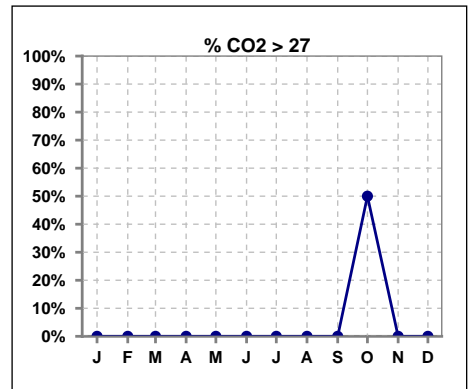
	Jan	Feb	Mar	Apr	May	Jun	Jul	Aug	Sep	Oct	Nov	Dec
# CO2	0	0	0	0	0	0	1	1	1	2	2	6
# CO2 < 23	0	0	0	0	0	0	1	1	1	1	1	3
Pop. Mean	0	0	0	0	0	0	20	21	19	25	23	22
Std. Deviation	0	0	0	0	0	0	0	0	0	10.61	2.83	1.21
% CO2 < 23	0%	0%	0%	0%	0%	0%	100%	100%	100%	50%	50%	50%



	Jan	Feb	Mar	Apr	May	Jun	Jul	Aug	Sep	Oct	Nov	Dec
# CO2	0	0	0	0	0	0	1	1	1	2	2	6
# CO2 23 to 27	0	0	0	0	0	0	0	0	0	0	1	3
Pop. Mean	0	0	0	0	0	0	20	21	19	25	23	22
Std. Deviation	0	0	0	0	0	0	0	0	0	10.61	2.83	1.21
% CO2 23 to 27	0%	0%	0%	0%	0%	0%	0%	0%	0%	0%	50%	50%



	Jan	Feb	Mar	Apr	May	Jun	Jul	Aug	Sep	Oct	Nov	Dec
# CO2	0	0	0	0	0	0	1	1	1	2	2	6
# CO2 > 27	0	0	0	0	0	0	0	0	0	1	0	0
Pop. Mean	0	0	0	0	0	0	20	21	19	25	23	22
Std. Deviation	0	0	0	0	0	0	0	0	0	10.61	2.83	1.21
% CO2 > 27	0%	0%	0%	0%	0%	0%	0%	0%	0%	50%	0%	0%

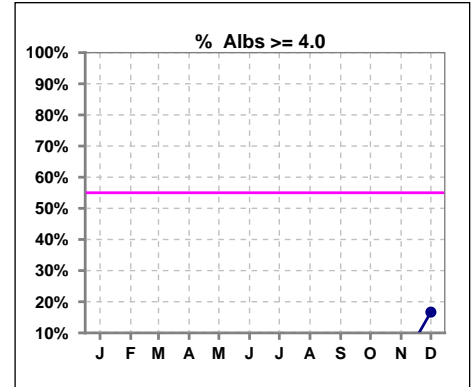


Methodology: a) All labs for 'Adequacy of Dialysis', 'Nutrition', 'Osteodystrophy', 'Anemia' and 'Diabetes' based on last value of month; b) BP's and #L processed are average of all values for month; c) Access data takes last access of month; d) Values for SGA and 'Infection Control' use most recent result.

*Albumin values use BCG method - as of July 2001

II. NUTRITION

	Jan	Feb	Mar	Apr	May	Jun	Jul	Aug	Sep	Oct	Nov	Dec
# Albumin	0	0	0	0	0	0	1	1	1	2	2	6
# Albumin >= 4.0	0	0	0	0	0	0	0	0	0	0	0	1
Pop. Mean	0	0	0	0	0	0	3.1	3.5	3.6	3.4	3.5	3.7
Std. Deviation	0	0	0	0	0	0	0	0	0	0.64	0.42	0.52
% Alb >= 4.0	0%	0%	0%	0%	0%	0%	0%	0%	0%	0%	0%	17%

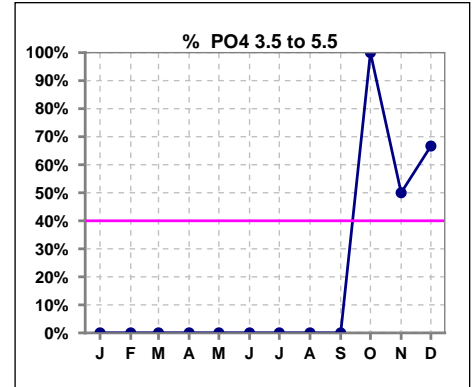


Methodology: a) All labs for 'Adequacy of Dialysis', 'Nutrition', 'Osteodystrophy', 'Anemia' and 'Diabetes' based on last value of month; b) BP's and #L processed are average of all values for month; c) Access data takes last access of month; d) Values for SGA and 'Infection Control' use most recent result.

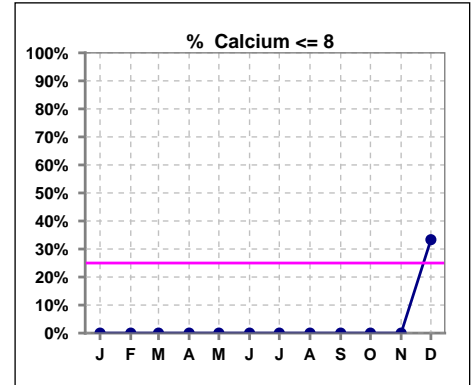
Lab methodology for PTH changed January 2012

III. OSTEODYSTROPHY

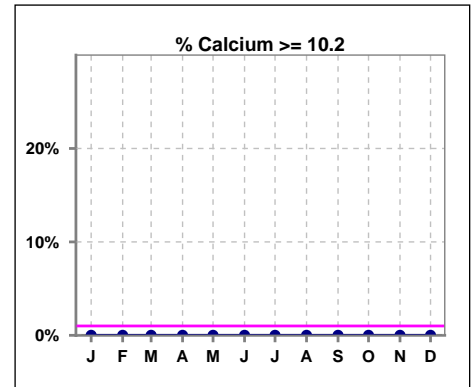
	Jan	Feb	Mar	Apr	May	Jun	Jul	Aug	Sep	Oct	Nov	Dec
# PO4	0	0	0	0	0	0	1	1	1	2	2	6
# PO4 3.5 to 5.5	0	0	0	0	0	0	0	0	0	2	1	4
Pop. Mean	0	0	0	0	0	0	7.0	6.0	6.4	3.8	5.6	5.0
Std. Deviation	0	0	0	0	0	0	0	0	0	0.14	0.21	2.13
% PO4 3.5 to 5.5	0%	0%	0%	0%	0%	0%	0%	0%	0%	100%	50%	67%



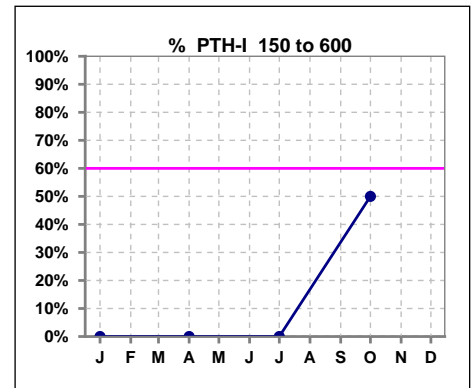
	Jan	Feb	Mar	Apr	May	Jun	Jul	Aug	Sep	Oct	Nov	Dec
# Calcium	0	0	0	0	0	0	1	1	1	2	2	6
# Calcium <= 8	0	0	0	0	0	0	0	0	0	0	0	2
Pop. Mean	0	0	0	0	0	0	8.8	9.1	9.7	9.3	9.3	8.7
Std. Deviation	0	0	0	0	0	0	0	0	0	0.64	0.21	1.09
% Calcium <= 8	0%	0%	0%	0%	0%	0%	0%	0%	0%	0%	0%	33%



	Jan	Feb	Mar	Apr	May	Jun	Jul	Aug	Sep	Oct	Nov	Dec
# Calcium	0	0	0	0	0	0	1	1	1	2	2	6
# Calcium >= 10.2	0	0	0	0	0	0	0	0	0	0	0	0
Pop. Mean	0	0	0	0	0	0	8.8	9.1	9.7	9.3	9.3	8.7
Std. Deviation	0	0	0	0	0	0	0	0	0	0.64	0.21	1.09
% Calcium >= 10.2	0%	0%	0%	0%	0%	0%	0%	0%	0%	0%	0%	0%



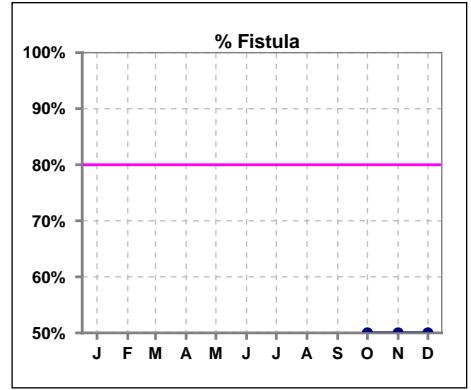
	Jan	Feb	Mar	Apr	May	Jun	Jul	Aug	Sep	Oct	Nov	Dec
# PTH-I	0			0			1			2		
# PTH-I 150 to 600	0			0			0			1		
Pop. Mean	0			0			148			159		
Std. Deviation	0			0			0			149		
% PTH-I 150 to 600	0%			0%			0%			50%		



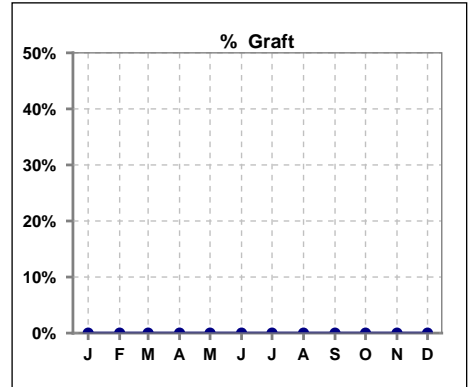
Methodology: a) All labs for 'Adequacy of Dialysis', 'Nutrition', 'Osteodystrophy', 'Anemia' and 'Diabetes' based on last value of month; b) BP's and #L processed are average of all values for month; c) Access data takes last access of month; d) Values for SGA and 'Infection Control' use most recent result.

IV. ACCESS

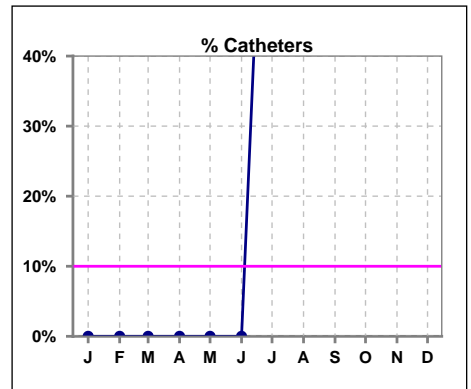
	Jan	Feb	Mar	Apr	May	Jun	Jul	Aug	Sep	Oct	Nov	Dec
# Access	0	0	0	0	0	0	1	1	1	2	2	6
# Fistula	0	0	0	0	0	0	0	0	0	1	1	3
% Fistula	0%	0%	0%	0%	0%	0%	0%	0%	0%	50%	50%	50%



	Jan	Feb	Mar	Apr	May	Jun	Jul	Aug	Sep	Oct	Nov	Dec
# Access	0	0	0	0	0	0	1	1	1	2	2	6
# Graft	0	0	0	0	0	0	0	0	0	0	0	0
% Graft	0%	0%	0%	0%	0%	0%	0%	0%	0%	0%	0%	0%



	Jan	Feb	Mar	Apr	May	Jun	Jul	Aug	Sep	Oct	Nov	Dec
# Access	0	0	0	0	0	0	1	1	1	2	2	6
# Catheters	0	0	0	0	0	0	1	1	1	1	1	3
% Catheters	0%	0%	0%	0%	0%	0%	100%	100%	100%	50%	50%	50%



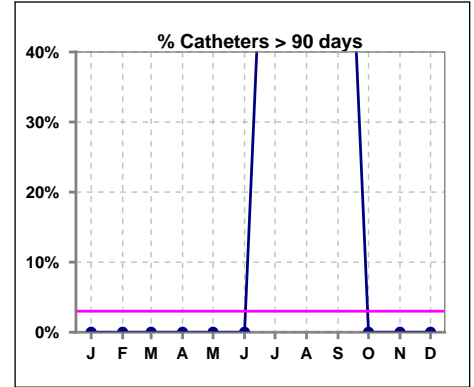
Methodology: a) All labs for 'Adequacy of Dialysis', 'Nutrition', 'Osteodystrophy', 'Anemia' and 'Diabetes' based on last value of month; b) BP's and #L processed are average of all values for month; c) Access data takes last access of month; d) Values for SGA and 'Infection Control' use most recent result.

IV. ACCESS - CONT.

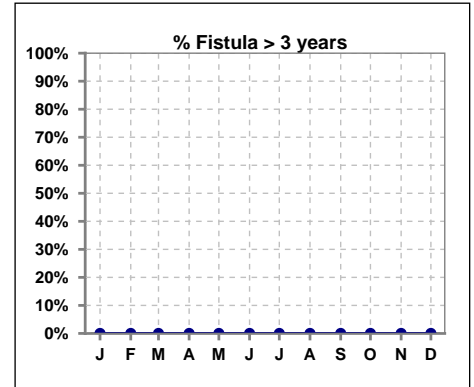
Catheters > 90 days

	Jan	Feb	Mar	Apr	May	Jun	Jul	Aug	Sep	Oct	Nov	Dec
# Access	0	0	0	0	0	0	1	1	1	2	2	6
# Catheters	0	0	0	0	0	0	1	1	1	0	0	0
% Catheters	0%	0%	0%	0%	0%	0%	100%	100%	100%	0%	0%	0%

Definition: Catheter in use on last treatment of the month



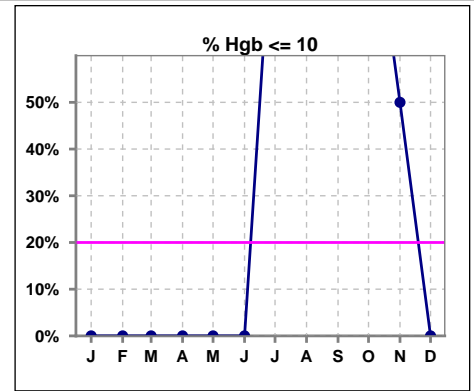
	Jan	Feb	Mar	Apr	May	Jun	Jul	Aug	Sep	Oct	Nov	Dec
# Fistula	0	0	0	0	0	0	0	0	0	1	1	3
# Fistula > 3 yrs	0	0	0	0	0	0	0	0	0	0	0	0
% Fistula > 3 yrs	0%	0%	0%	0%	0%	0%	0%	0%	0%	0%	0%	0%



V. ANEMIA

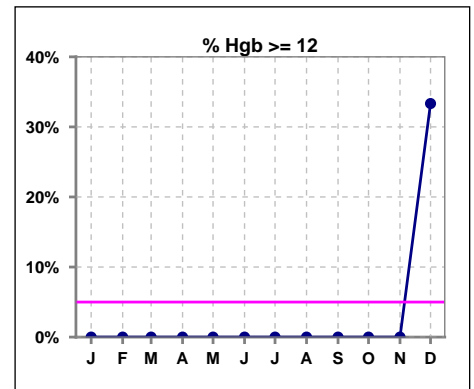
	Jan	Feb	Mar	Apr	May	Jun	Jul	Aug	Sep	Oct	Nov	Dec
# Hgb	0	0	0	0	0	0	1	1	1	1	2	3
# Hgb <= 10	0	0	0	0	0	0	1	1	1	1	1	0
Pop. Mean	0	0	0	0	0	0	8.0	10.0	9.8	9.3	9.9	11.1
Std. Deviation	0	0	0	0	0	0	0	0	0	0	0.3	0.8
% Hgb <= 10	0%	0%	0%	0%	0%	0%	100%	100%	100%	100%	50%	0%

Note: Excludes patients who received no ESA in month.



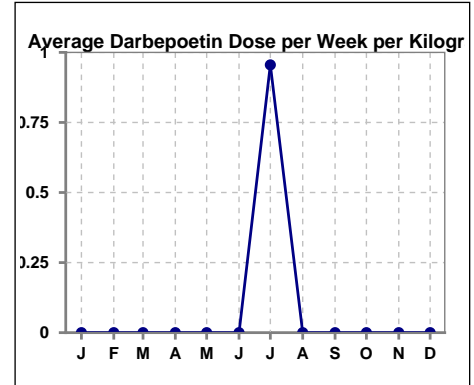
	Jan	Feb	Mar	Apr	May	Jun	Jul	Aug	Sep	Oct	Nov	Dec
# Hgb	0	0	0	0	0	0	1	1	1	1	2	3
# Hgb >= 12	0	0	0	0	0	0	0	0	0	0	0	1
Pop. Mean	0	0	0	0	0	0	8.0	10.0	9.8	9.3	9.9	11.1
Std. Deviation	0	0	0	0	0	0	0	0	0	0	0.3	0.8
% Hgb >= 12	0%	0%	0%	0%	0%	0%	0%	0%	0%	0%	0%	33%

Note: Excludes patients who received no ESA in month.



Average Darbepoetin Dose per Week per Kilogram

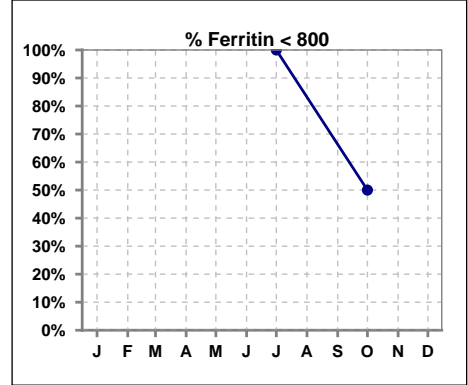
	Jan	Feb	Mar	Apr	May	Jun	Jul	Aug	Sep	Oct	Nov	Dec
# Average Darbepoetin	0	0	0	0	0	0	1.0	0	0	0	0	0



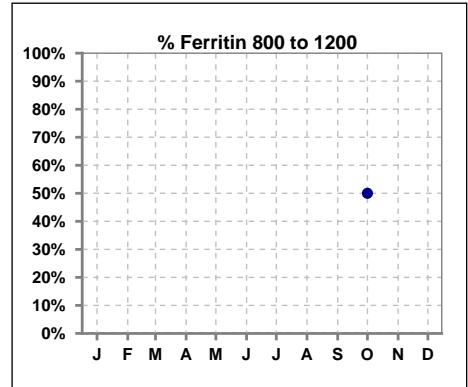
V. ANEMIA - CONT.

Iron Profile

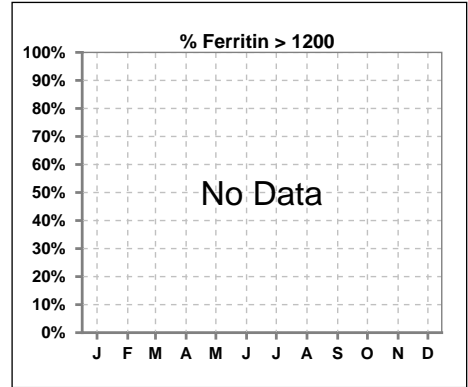
	Jan	Feb	Mar	Apr	May	Jun	Jul	Aug	Sep	Oct	Nov	Dec
# Ferritin							1			2		
# Ferritin < 800							1			1		
Pop. Mean						743				863		
Std. Deviation						0				378		
% Ferritin < 800						100%				50%		



	Jan	Feb	Mar	Apr	May	Jun	Jul	Aug	Sep	Oct	Nov	Dec
# Ferritin							1			2		
# Ferritin 800 to 1200										1		
Pop. Mean						743				863		
Std. Deviation						0				378		
% Ferritin 800 to 1200										50%		

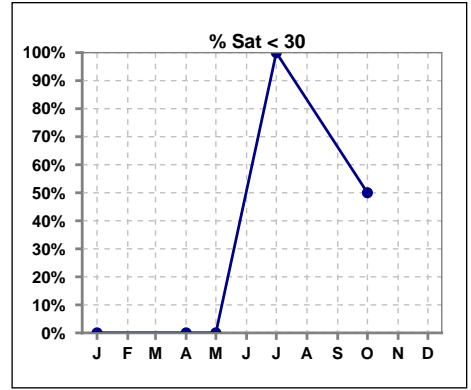


	Jan	Feb	Mar	Apr	May	Jun	Jul	Aug	Sep	Oct	Nov	Dec
# Ferritin							1			2		
# Ferritin > 1200												
Pop. Mean						743				863		
Std. Deviation						0				378		
% Ferritin > 1200												

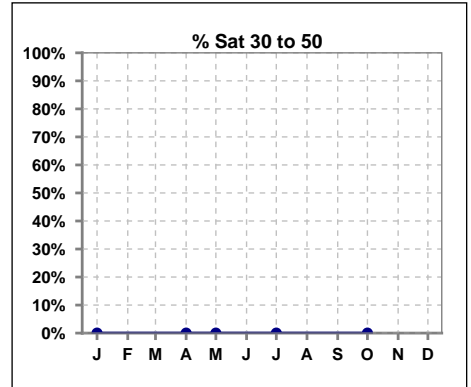


V. ANEMIA - CONT.

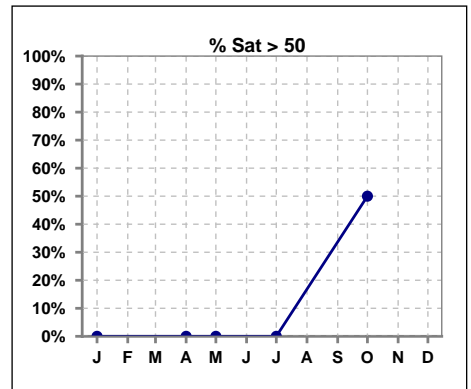
	Jan	Feb	Mar	Apr	May	Jun	Jul	Aug	Sep	Oct	Nov	Dec
# % Sat	0			0	0		1			2		
# % Sat < 30	0			0	0		1			1		
Pop. Mean	0			0	0		6			43		
Std. Deviation	0			0	0		0			27		
%% Sat < 30	0%			0%	0%		100%			50%		



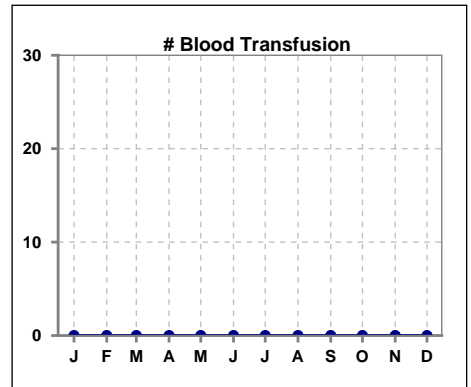
	Jan	Feb	Mar	Apr	May	Jun	Jul	Aug	Sep	Oct	Nov	Dec
# % Sat	0			0	0		1			2		
# % Sat 30 to 50	0			0	0		0			0		
Pop. Mean	0			0	0		6			43		
Std. Deviation	0			0	0		0			27		
%% Sat 30 to 50	0%			0%	0%		0%			0%		



	Jan	Feb	Mar	Apr	May	Jun	Jul	Aug	Sep	Oct	Nov	Dec
# % Sat	0			0	0		1			2		
# % Sat > 50	0			0	0		0			1		
Pop. Mean	0			0	0		6			43		
Std. Deviation	0			0	0		0			27		
%% Sat > 50	0%			0%	0%		0%			50%		



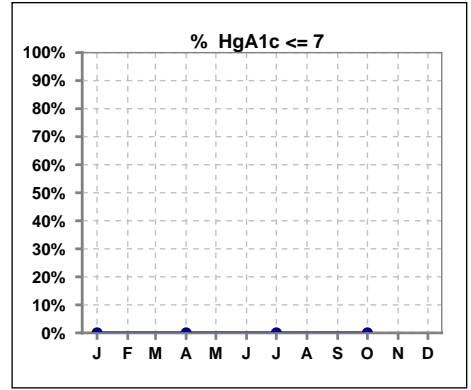
	Jan	Feb	Mar	Apr	May	Jun	Jul	Aug	Sep	Oct	Nov	Dec
# Patient	0	0	0	0	0	0	1	1	1	2	2	6
# Blood Transfusion	0	0	0	0	0	0	0	0	0	0	0	0



Methodology: a) All labs for 'Adequacy of Dialysis', 'Nutrition', 'Osteodystrophy', 'Anemia' and 'Diabetes' based on last value of month; b) BP's and #L processed are average of all values for month; c) Access data takes last access of month; d) Values for SGA and 'Infection Control' use most recent result.

VI. Diabetes

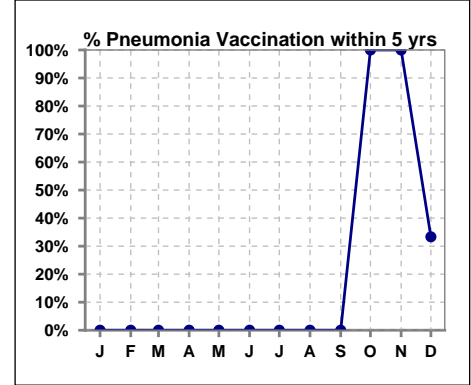
	Jan	Feb	Mar	Apr	May	Jun	Jul	Aug	Sep	Oct	Nov	Dec
# HgA1c	0			0			1			2		
# HgA1c <= 7	0			0			0			0		
Pop. Mean	0			0			7.5			8.7		
Std. Deviation	0			0			0			2.12		
% HgA1c <= 7	0%			0%			0%			0%		



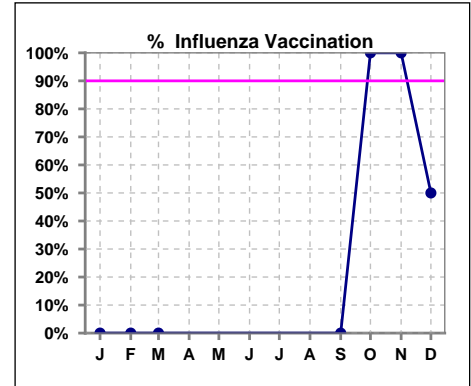
VII. Infection Control

Pneumonia vaccination within the past five years

	Jan	Feb	Mar	Apr	May	Jun	Jul	Aug	Sep	Oct	Nov	Dec
# Patient	0	0	0	0	0	0	1	1	1	2	2	6
# Pneumonia	0	0	0	0	0	0	0	0	0	2	2	2
% Pneumonia	0%	0%	0%	0%	0%	0%	0%	0%	0%	100%	100%	33%



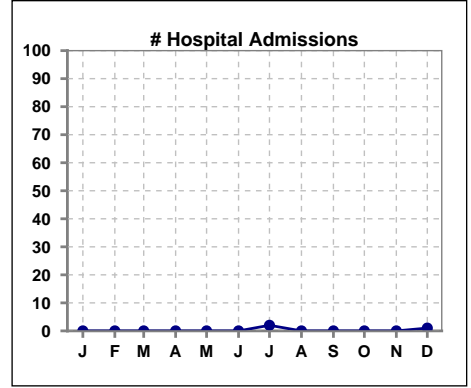
	Jan	Feb	Mar	Apr	May	Jun	Jul	Aug	Sep	Oct	Nov	Dec
# Patient	0	0	0						1	2	2	6
# Influenza	0	0	0						0	2	2	3
% Influenza	0%	0%	0%						0%	100%	100%	50%



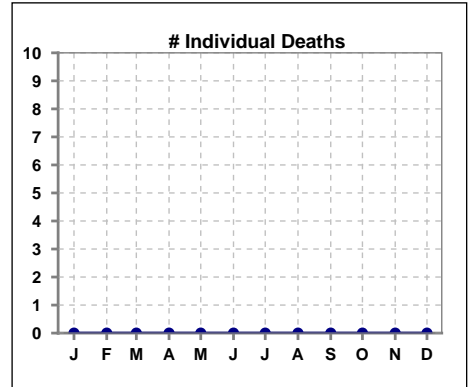
Methodology: a) All labs for 'Adequacy of Dialysis', 'Nutrition', 'Osteodystrophy', 'Anemia' and 'Diabetes' based on last value of month; b) BP's and #L processed are average of all values for month; c) Access data takes last access of month; d) Values for SGA and 'Infection Control' use most recent result.

VIII. Outcome measures

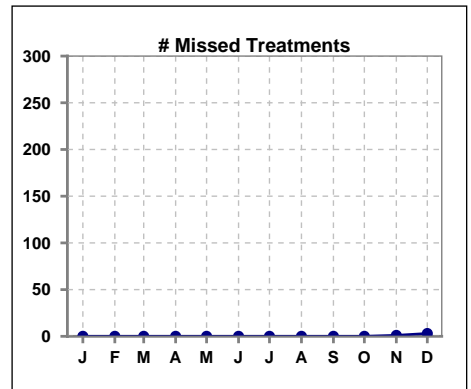
	Jan	Feb	Mar	Apr	May	Jun	Jul	Aug	Sep	Oct	Nov	Dec
# Patient	0	0	0	0	0	0	1	1	1	2	2	6
# Hospital Admissions	0	0	0	0	0	0	2	0	0	0	0	1



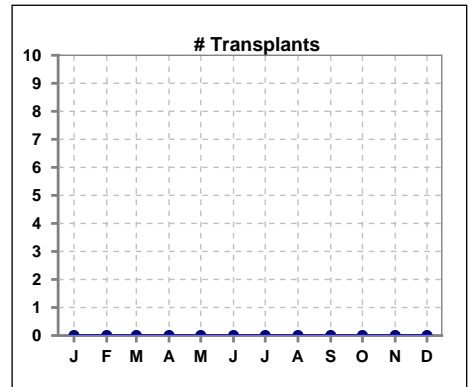
	Jan	Feb	Mar	Apr	May	Jun	Jul	Aug	Sep	Oct	Nov	Dec
# Patient	0	0	0	0	0	0	1	1	1	2	2	6
# Individual Deaths	0	0	0	0	0	0	0	0	0	0	0	0



	Jan	Feb	Mar	Apr	May	Jun	Jul	Aug	Sep	Oct	Nov	Dec
# Patient	0	0	0	0	0	0	1	1	1	2	2	6
# Missed Treatments	0	0	0	0	0	0	0	0	0	0	1	3



	Jan	Feb	Mar	Apr	May	Jun	Jul	Aug	Sep	Oct	Nov	Dec
# Patient	0	0	0	0	0	0	1	1	1	2	2	6
# Transplants	0	0	0	0	0	0	0	0	0	0	0	0



Methodology: a) All labs for 'Adequacy of Dialysis', 'Nutrition', 'Osteodystrophy', 'Anemia' and 'Diabetes' based on last value of month; b) BP's and #L processed are average of all values for month; c) Access data takes last access of month; d) Values for SGA and 'Infection Control' use most recent result.