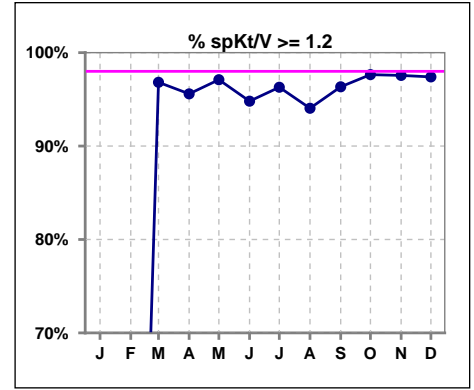
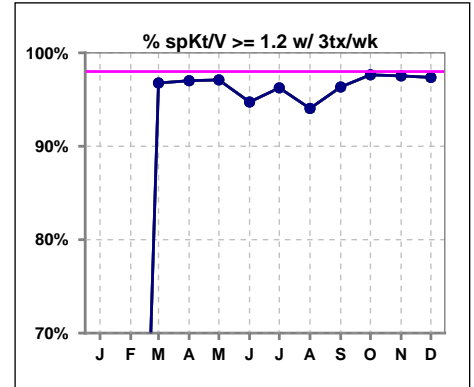


**I. ADEQUACY OF DIALYSIS**

	Jan	Feb	Mar	Apr	May	Jun	Jul	Aug	Sep	Oct	Nov	Dec
# spKt/V	0	0	63	68	69	77	81	84	82	85	82	77
# spKt/V >= 1.2	0	0	61	65	67	73	78	79	79	83	80	75
Pop. Mean	0	0	1.70	1.68	1.68	1.62	1.68	1.61	1.70	1.62	1.61	1.64
Std. Deviation	0	0	0.30	0.33	0.36	0.33	0.32	0.31	0.37	0.31	0.31	0.33
% spKt/V >= 1.2	0%	0%	97%	96%	97%	95%	96%	94%	96%	98%	98%	97%

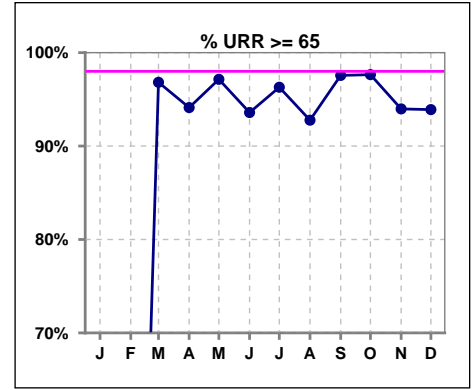


	Jan	Feb	Mar	Apr	May	Jun	Jul	Aug	Sep	Oct	Nov	Dec
# spKt/V w/ 3tx/wk	0	0	62	67	69	76	80	84	82	85	81	76
# spKt/V >= 1.2 w/3tx/wk	0	0	60	65	67	72	77	79	79	83	79	74
Pop. Mean	0	0	1.71	1.69	1.68	1.62	1.68	1.61	1.70	1.62	1.61	1.64
Std. Deviation	0	0	0.30	0.32	0.36	0.34	0.32	0.31	0.37	0.31	0.31	0.33
% >= 1.2 w/3tx/wk	0%	0%	97%	97%	97%	95%	96%	94%	96%	98%	98%	97%

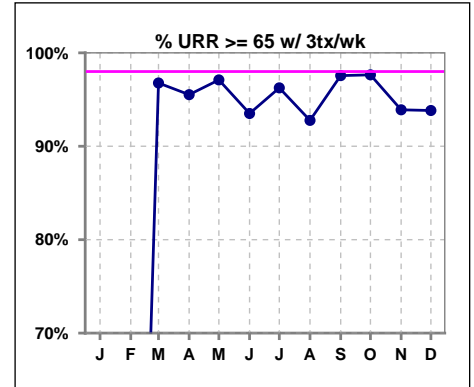


**I. ADEQUACY OF DIALYSIS - CONT.**

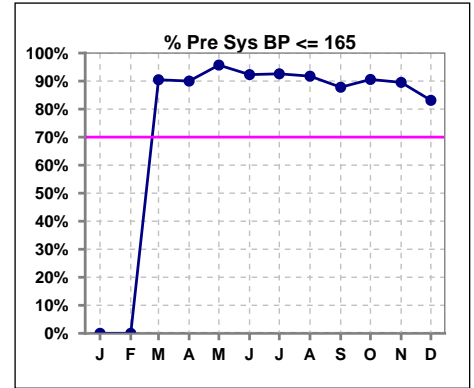
	Jan	Feb	Mar	Apr	May	Jun	Jul	Aug	Sep	Oct	Nov	Dec
# URR	0	0	63	68	70	78	81	83	82	85	83	82
# URR >= 65	0	0	61	64	68	73	78	77	80	83	78	77
Pop. Mean	0	0	77	76	76	75	76	75	76	75	74	75
Std. Deviation	0	0	5.53	6.87	7.15	6.88	6.09	6.56	6.82	6.48	9.05	6.44
% URR >= 65	0%	0%	97%	94%	97%	94%	96%	93%	98%	98%	94%	94%



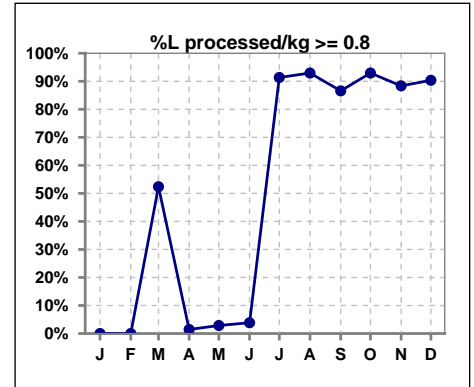
	Jan	Feb	Mar	Apr	May	Jun	Jul	Aug	Sep	Oct	Nov	Dec
# URR w/ 3tx/wk	0	0	62	67	69	77	80	83	82	85	82	81
# URR>=65 w/ 3tx/wk	0	0	60	64	67	72	77	77	80	83	77	76
Pop. Mean	0	0	77	76	76	75	76	75	76	75	74	75
Std. Deviation	0	0	5.50	6.61	6.89	6.92	6.12	6.56	6.82	6.48	9.10	6.47
% URR>=65 w/ 3tx/wk	0%	0%	97%	96%	97%	94%	96%	93%	98%	98%	94%	94%



	Jan	Feb	Mar	Apr	May	Jun	Jul	Aug	Sep	Oct	Nov	Dec
# Pre Sys BP	0	0	63	70	70	78	81	85	82	85	86	83
# Pre Sys BP <= 165	0	0	57	63	67	72	75	78	72	77	77	69
Pop. Mean	0	0	141	142	139	138	138	139	141	142	141	142
Std. Deviation	0	0	17.5	18.2	18.2	19.0	19.0	19.7	19.3	19.1	19.0	20.9
% Pre Sys BP <=165	0%	0%	90%	90%	96%	92%	93%	92%	88%	91%	90%	83%

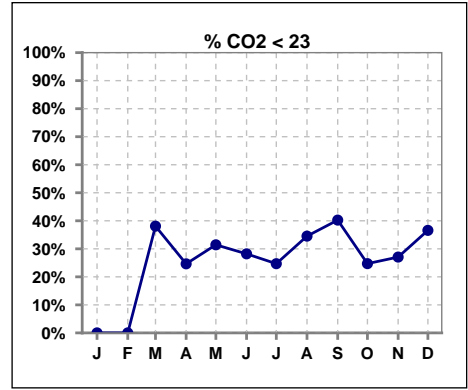


	Jan	Feb	Mar	Apr	May	Jun	Jul	Aug	Sep	Oct	Nov	Dec
# L processed/kg	0	0	63	70	70	78	81	85	82	85	86	83
# L processed/kg>=0.8	0	0	33	1	2	3	74	79	71	79	76	75
Pop. Mean	0	0	1	0	0	0	1	1	1	1	1	1
Std. Deviation	0	0	0.2	0.1	0.1	0.2	0.3	0.3	0.3	0.3	0.2	0.2
% L processed/kg>=0.8	0%	0%	52%	1%	3%	4%	91%	93%	87%	93%	88%	90%

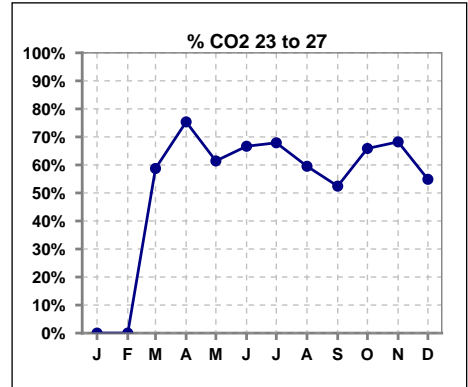


**I. ADEQUACY OF DIALYSIS - CONT.**

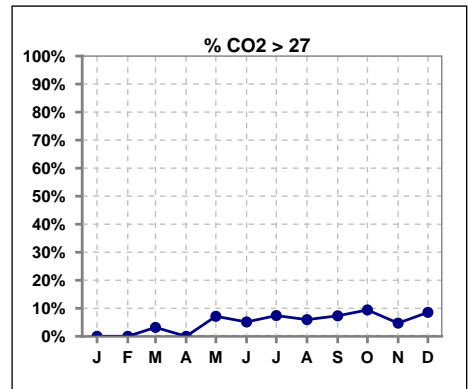
	Jan	Feb	Mar	Apr	May	Jun	Jul	Aug	Sep	Oct	Nov	Dec
# CO2	0	0	63	69	70	78	81	84	82	85	85	82
# CO2 < 23	0	0	24	17	22	22	20	29	33	21	23	30
Pop. Mean	0	0	23	24	24	24	24	23	23	24	24	24
Std. Deviation	0	0	2.47	2.21	2.44	2.37	2.77	2.61	2.86	2.94	2.36	2.83
% CO2 < 23	0%	0%	38%	25%	31%	28%	25%	35%	40%	25%	27%	37%



	Jan	Feb	Mar	Apr	May	Jun	Jul	Aug	Sep	Oct	Nov	Dec
# CO2	0	0	63	69	70	78	81	84	82	85	85	82
# CO2 23 to 27	0	0	37	52	43	52	55	50	43	56	58	45
Pop. Mean	0	0	23	24	24	24	24	23	23	24	24	24
Std. Deviation	0	0	2.47	2.21	2.44	2.37	2.77	2.61	2.86	2.94	2.36	2.83
% CO2 23 to 27	0%	0%	59%	75%	61%	67%	68%	60%	52%	66%	68%	55%



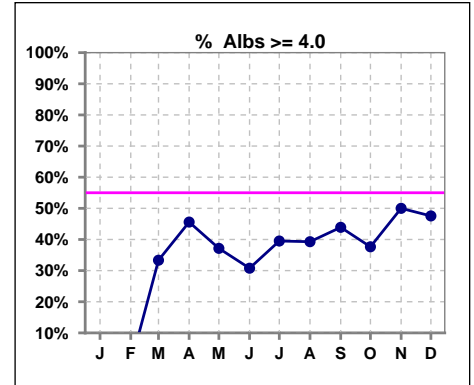
	Jan	Feb	Mar	Apr	May	Jun	Jul	Aug	Sep	Oct	Nov	Dec
# CO2	0	0	63	69	70	78	81	84	82	85	85	82
# CO2 > 27	0	0	2	0	5	4	6	5	6	8	4	7
Pop. Mean	0	0	23	24	24	24	24	23	23	24	24	24
Std. Deviation	0	0	2.47	2.21	2.44	2.37	2.77	2.61	2.86	2.94	2.36	2.83
% CO2 > 27	0%	0%	3%	0%	7%	5%	7%	6%	7%	9%	5%	9%



\*Albumin values use BCG method - as of July 2001

**II. NUTRITION**

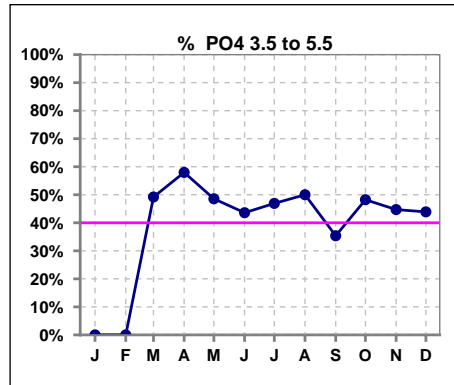
	Jan	Feb	Mar	Apr	May	Jun	Jul	Aug	Sep	Oct	Nov	Dec
# Albumin	0	0	63	68	70	78	81	84	82	85	84	82
# Albumin >= 4.0	0	0	21	31	26	24	32	33	36	32	42	39
Pop. Mean	0	0	3.8	3.8	3.8	3.8	3.8	3.8	3.9	3.8	3.8	3.8
Std. Deviation	0	0	0.38	0.36	0.38	0.42	0.40	0.43	0.37	0.41	0.43	0.45
% Alb >= 4.0	0%	0%	33%	46%	37%	31%	40%	39%	44%	38%	50%	48%



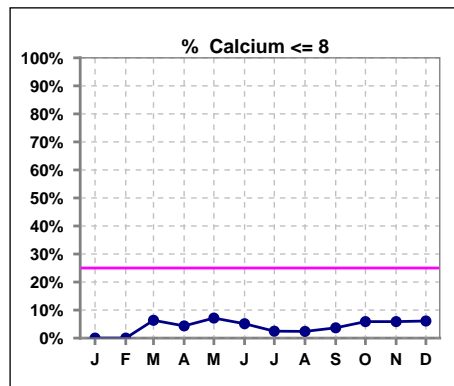
Lab methodology for PTH changed January 2012

**III. OSTEODYSTROPHY**

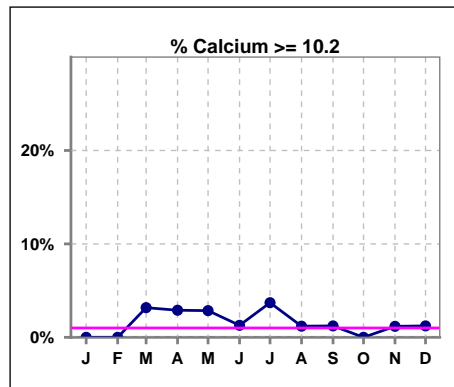
	Jan	Feb	Mar	Apr	May	Jun	Jul	Aug	Sep	Oct	Nov	Dec
# PO4	0	0	63	69	70	78	81	84	82	85	85	82
# PO4 3.5 to 5.5	0	0	31	40	34	34	38	42	29	41	38	36
Pop. Mean	0	0	5.6	5.4	5.6	5.4	5.3	5.8	5.7	5.8	5.9	5.6
Std. Deviation	0	0	1.75	1.52	1.75	1.90	1.77	1.87	1.84	2.07	2.25	1.67
% PO4 3.5 to 5.5	0%	0%	49%	58%	49%	44%	47%	50%	35%	48%	45%	44%



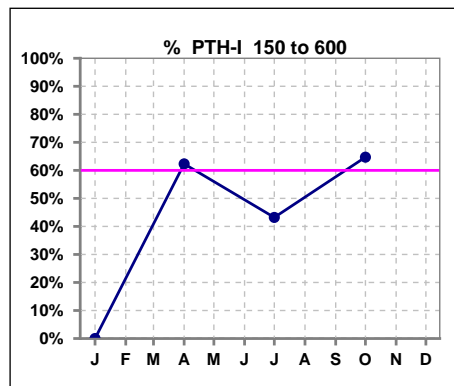
	Jan	Feb	Mar	Apr	May	Jun	Jul	Aug	Sep	Oct	Nov	Dec
# Calcium	0	0	63	69	70	78	81	84	82	85	85	82
# Calcium <= 8	0	0	4	3	5	4	2	2	3	5	5	5
Pop. Mean	0	0	9.2	9.0	9.3	9.3	9.3	9.3	9.2	9.3	9.3	9.2
Std. Deviation	0	0	0.71	0.66	0.68	0.72	0.67	0.59	0.62	0.67	0.61	0.63
% Calcium <= 8	0%	0%	6%	4%	7%	5%	2%	2%	4%	6%	6%	6%



	Jan	Feb	Mar	Apr	May	Jun	Jul	Aug	Sep	Oct	Nov	Dec
# Calcium	0	0	63	69	70	78	81	84	82	85	85	82
# Calcium >= 10.2	0	0	2	2	2	1	3	1	1	0	1	1
Pop. Mean	0	0	9.2	9.0	9.3	9.3	9.3	9.3	9.2	9.3	9.3	9.2
Std. Deviation	0	0	0.71	0.66	0.68	0.72	0.67	0.59	0.62	0.67	0.61	0.63
% Calcium >= 10.2	0%	0%	3%	3%	3%	1%	4%	1%	1%	0%	1%	1%



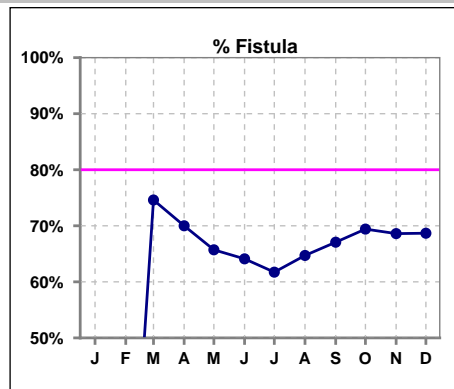
	Jan	Feb	Mar	Apr	May	Jun	Jul	Aug	Sep	Oct	Nov	Dec
# PTH-I	0			69			81			85		
# PTH-I 150 to 600	0			43			35			55		
Pop. Mean	0			565			485			479		
Std. Deviation	0			473			513			610		
% PTH-I 150 to 600	0%			62%			43%			65%		



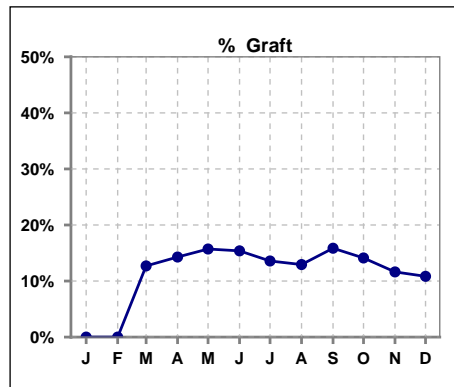
Methodology: a) All labs for 'Adequacy of Dialysis', 'Nutrition', 'Osteodystrophy', 'Anemia' and 'Diabetes' based on last value of month; b) BP's and #L processed are average of all values for month; c) Access data takes last access of month; d) Values for SGA and 'Infection Control' use most recent result.

**IV. ACCESS**

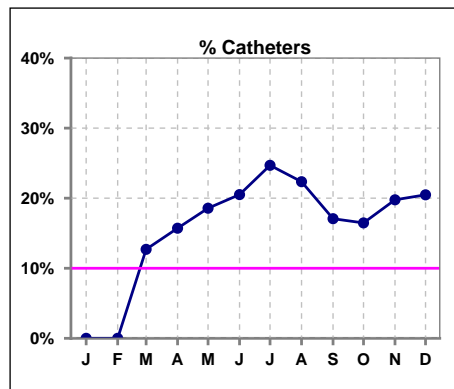
	Jan	Feb	Mar	Apr	May	Jun	Jul	Aug	Sep	Oct	Nov	Dec
# Access	0	0	63	70	70	78	81	85	82	85	86	83
# Fistula	0	0	47	49	46	50	50	55	55	59	59	57
% Fistula	0%	0%	75%	70%	66%	64%	62%	65%	67%	69%	69%	69%



	Jan	Feb	Mar	Apr	May	Jun	Jul	Aug	Sep	Oct	Nov	Dec
# Access	0	0	63	70	70	78	81	85	82	85	86	83
# Graft	0	0	8	10	11	12	11	11	13	12	10	9
% Graft	0%	0%	13%	14%	16%	15%	14%	13%	16%	14%	12%	11%



	Jan	Feb	Mar	Apr	May	Jun	Jul	Aug	Sep	Oct	Nov	Dec
# Access	0	0	63	70	70	78	81	85	82	85	86	83
# Catheters	0	0	8	11	13	16	20	19	14	14	17	17
% Catheters	0%	0%	13%	16%	19%	21%	25%	22%	17%	16%	20%	20%

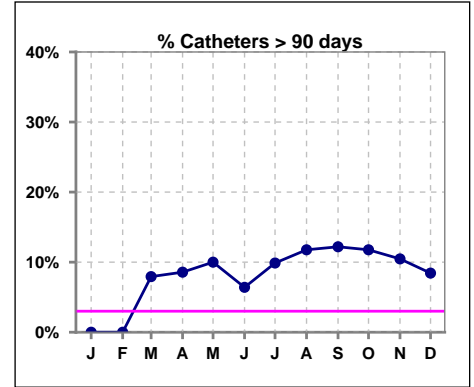


**IV. ACCESS - CONT.**

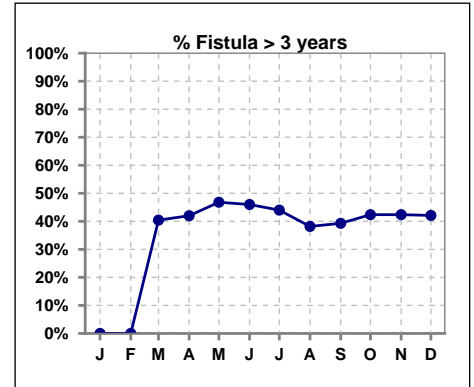
**Catheters > 90 days**

	Jan	Feb	Mar	Apr	May	Jun	Jul	Aug	Sep	Oct	Nov	Dec
# Access	0	0	63	70	70	78	81	85	82	85	86	83
# Catheters	0	0	5	6	7	5	8	10	10	10	9	7
% Catheters	0%	0%	8%	9%	10%	6%	10%	12%	12%	12%	10%	8%

Definition: Catheter in use on last treatment of the month



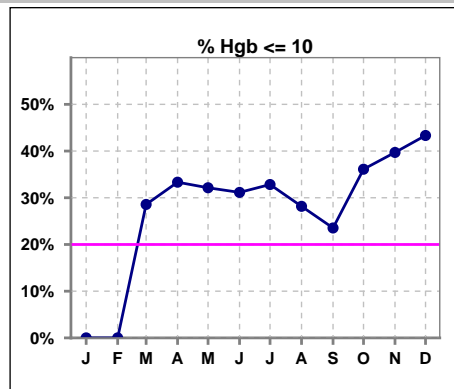
	Jan	Feb	Mar	Apr	May	Jun	Jul	Aug	Sep	Oct	Nov	Dec
# Fistula	0	0	47	50	47	50	50	55	56	59	59	57
# Fistula > 3 yrs	0	0	19	21	22	23	22	21	22	25	25	24
% Fistula > 3 yrs	0%	0%	40%	42%	47%	46%	44%	38%	39%	42%	42%	42%



**V. ANEMIA**

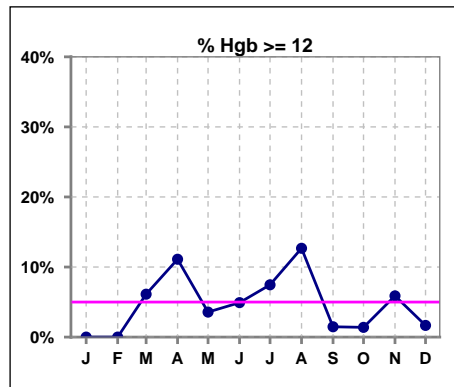
	Jan	Feb	Mar	Apr	May	Jun	Jul	Aug	Sep	Oct	Nov	Dec
# Hgb	0	0	49	54	56	61	67	71	68	72	68	60
# Hgb <= 10	0	0	14	18	18	19	22	20	16	26	27	26
Pop. Mean	0	0	10.6	10.6	10.4	10.4	10.5	10.6	10.6	10.3	10.2	10.0
Std. Deviation	0	0	1.1	1.2	1.1	1.0	1.2	1.3	1.1	1.2	1.3	1.3
% Hgb <= 10	0%	0%	29%	33%	32%	31%	33%	28%	24%	36%	40%	43%

Note: Excludes patients who received no ESA in month.



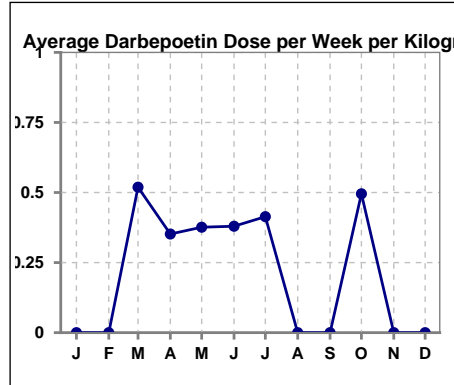
	Jan	Feb	Mar	Apr	May	Jun	Jul	Aug	Sep	Oct	Nov	Dec
# Hgb	0	0	49	54	56	61	67	71	68	72	68	60
# Hgb >= 12	0	0	3	6	2	3	5	9	1	1	4	1
Pop. Mean	0	0	10.6	10.6	10.4	10.4	10.5	10.6	10.6	10.3	10.2	10.0
Std. Deviation	0	0	1.1	1.2	1.1	1.0	1.2	1.3	1.1	1.2	1.3	1.3
% Hgb >= 12	0%	0%	6%	11%	4%	5%	7%	13%	1%	1%	6%	2%

Note: Excludes patients who received no ESA in month.



**Average Darbepoetin Dose per Week per Kilogram**

	Jan	Feb	Mar	Apr	May	Jun	Jul	Aug	Sep	Oct	Nov	Dec
# Average Darbepoetin	0	0	.5	.4	.4	.4	.4	0	0	.5	0	0

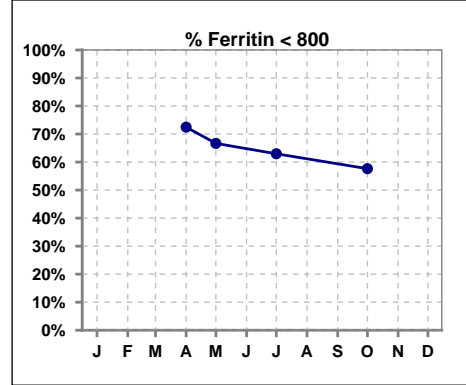




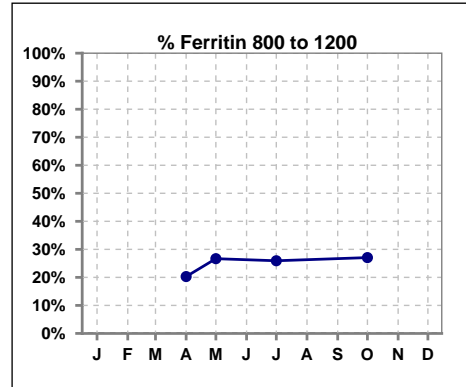
**V. ANEMIA - CONT.**

**Iron Profile**

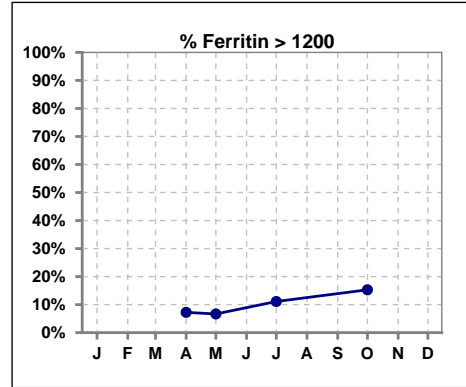
	Jan	Feb	Mar	Apr	May	Jun	Jul	Aug	Sep	Oct	Nov	Dec
# Ferritin				69	15		81			85		
# Ferritin < 800				50	10		51			49		
Pop. Mean				627	631		688			736		
Std. Deviation				338	414		418			402		
<b>% Ferritin &lt; 800</b>				<b>72%</b>	<b>67%</b>		<b>63%</b>			<b>58%</b>		



	Jan	Feb	Mar	Apr	May	Jun	Jul	Aug	Sep	Oct	Nov	Dec
# Ferritin				69	15		81			85		
# Ferritin 800 to 1200				14	4		21			23		
Pop. Mean				627	631		688			736		
Std. Deviation				338	414		418			402		
<b>% Ferritin 800 to 1200</b>				<b>20%</b>	<b>27%</b>		<b>26%</b>			<b>27%</b>		

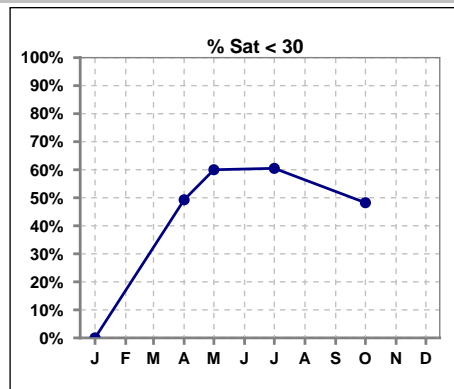


	Jan	Feb	Mar	Apr	May	Jun	Jul	Aug	Sep	Oct	Nov	Dec
# Ferritin				69	15		81			85		
# Ferritin > 1200				5	1		9			13		
Pop. Mean				627	631		688			736		
Std. Deviation				338	414		418			402		
<b>% Ferritin &gt; 1200</b>				<b>7%</b>	<b>7%</b>		<b>11%</b>			<b>15%</b>		

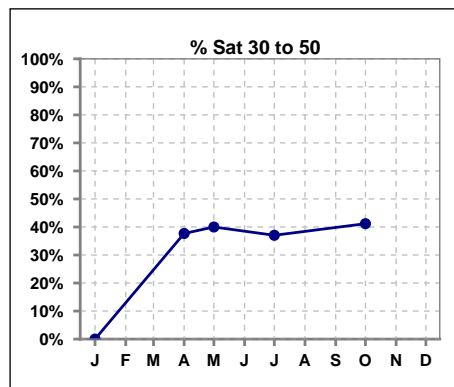


**V. ANEMIA - CONT.**

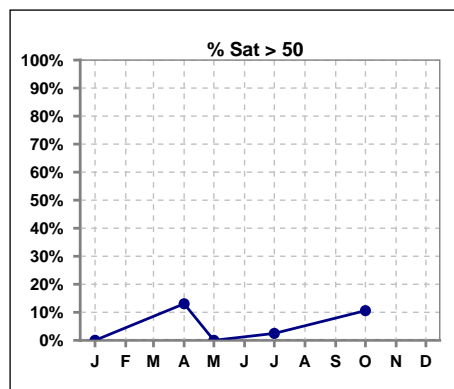
	Jan	Feb	Mar	Apr	May	Jun	Jul	Aug	Sep	Oct	Nov	Dec
# % Sat	0			69	15		81			85		
# % Sat < 30	0			34	9		49			41		
Pop. Mean	0			34	28		28			33		
Std. Deviation	0			18	12		14			14		
<b>% % Sat &lt; 30</b>	<b>0%</b>			<b>49%</b>	<b>60%</b>		<b>60%</b>			<b>48%</b>		



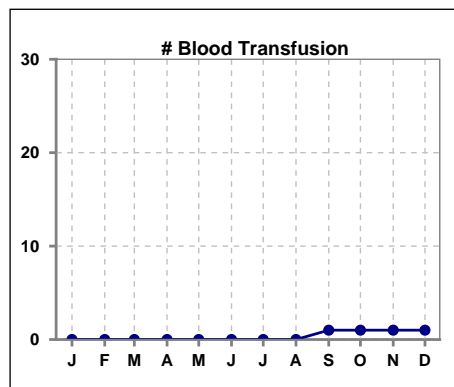
	Jan	Feb	Mar	Apr	May	Jun	Jul	Aug	Sep	Oct	Nov	Dec
# % Sat	0			69	15		81			85		
# % Sat 30 to 50	0			26	6		30			35		
Pop. Mean	0			34	28		28			33		
Std. Deviation	0			18	12		14			14		
<b>% % Sat 30 to 50</b>	<b>0%</b>			<b>38%</b>	<b>40%</b>		<b>37%</b>			<b>41%</b>		



	Jan	Feb	Mar	Apr	May	Jun	Jul	Aug	Sep	Oct	Nov	Dec
# % Sat	0			69	15		81			85		
# % Sat > 50	0			9	0		2			9		
Pop. Mean	0			34	28		28			33		
Std. Deviation	0			18	12		14			14		
<b>% % Sat &gt; 50</b>	<b>0%</b>			<b>13%</b>	<b>0%</b>		<b>2%</b>			<b>11%</b>		



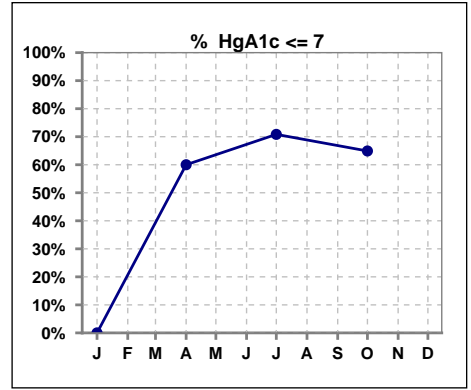
	Jan	Feb	Mar	Apr	May	Jun	Jul	Aug	Sep	Oct	Nov	Dec
# Patient	0	0	63	70	71	78	81	85	85	86	87	84
# Blood Transfusion	0	0	0	0	0	0	0	0	1	1	1	1



Methodology: a) All labs for 'Adequacy of Dialysis', 'Nutrition', 'Osteodystrophy', 'Anemia' and 'Diabetes' based on last value of month; b) BP's and #L processed are average of all values for month; c) Access data takes last access of month; d) Values for SGA and 'Infection Control' use most recent result.

**VI. Diabetes**

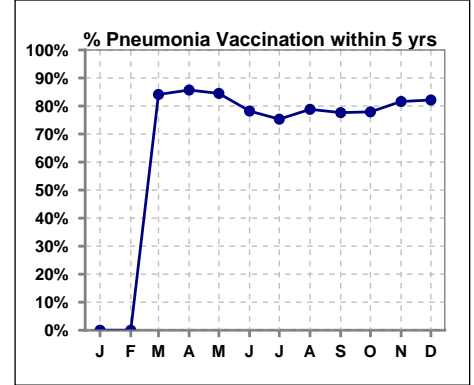
	Jan	Feb	Mar	Apr	May	Jun	Jul	Aug	Sep	Oct	Nov	Dec
# HgA1c	0			45			48			57		
# HgA1c <= 7	0			27			34			37		
Pop. Mean	0			6.9			6.6			6.7		
Std. Deviation	0			1.58			1.60			1.47		
<b>% HgA1c &lt;= 7</b>	<b>0%</b>			<b>60%</b>			<b>71%</b>			<b>65%</b>		



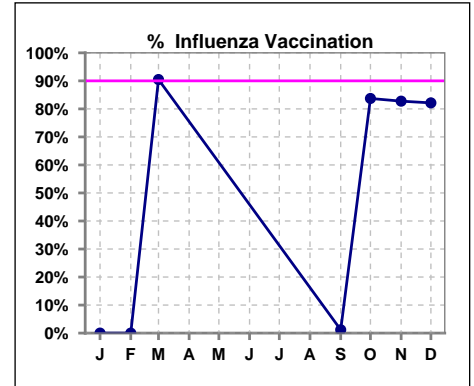
**VII. Infection Control**

**Pneumonia vaccination within the past five years**

	Jan	Feb	Mar	Apr	May	Jun	Jul	Aug	Sep	Oct	Nov	Dec
# Patient	0	0	63	70	71	78	81	85	85	86	87	84
# Pneumonia	0	0	53	60	60	61	61	67	66	67	71	69
% Pneumonia	0%	0%	84%	86%	85%	78%	75%	79%	78%	78%	82%	82%



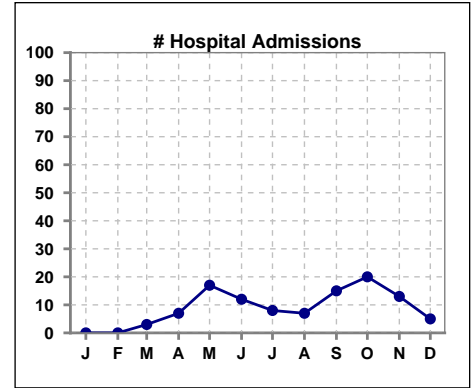
	Jan	Feb	Mar	Apr	May	Jun	Jul	Aug	Sep	Oct	Nov	Dec
# Patient	0	0	63						85	86	87	84
# Influenza	0	0	57						1	72	72	69
% Influenza	0%	0%	90%						1%	84%	83%	82%



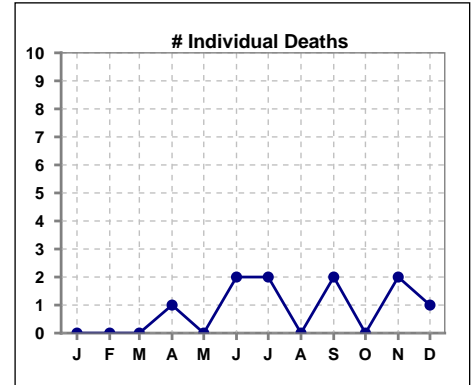
Methodology: a) All labs for 'Adequacy of Dialysis', 'Nutrition', 'Osteodystrophy', 'Anemia' and 'Diabetes' based on last value of month; b) BP's and #L processed are average of all values for month; c) Access data takes last access of month; d) Values for SGA and 'Infection Control' use most recent result.

**VIII. Outcome measures**

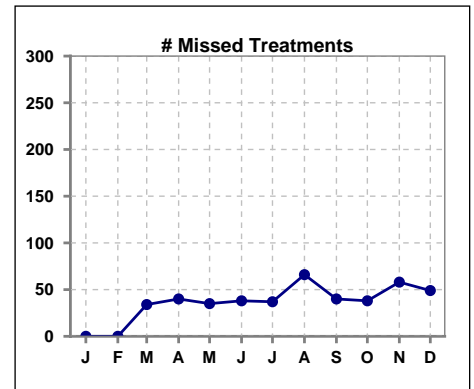
	Jan	Feb	Mar	Apr	May	Jun	Jul	Aug	Sep	Oct	Nov	Dec
# Patient	0	0	63	70	71	78	81	85	85	86	87	84
# Hospital Admissions	0	0	3	7	17	12	8	7	15	20	13	5



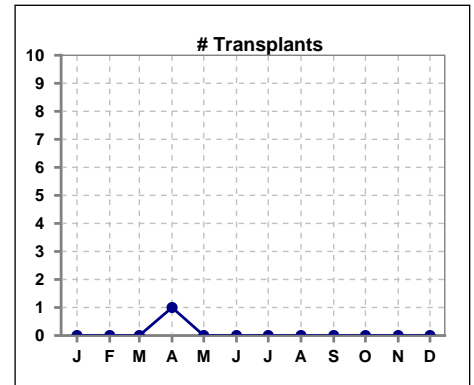
	Jan	Feb	Mar	Apr	May	Jun	Jul	Aug	Sep	Oct	Nov	Dec
# Patient	0	0	63	70	71	78	81	85	85	86	87	84
# Individual Deaths	0	0	0	1	0	2	2	0	2	0	2	1



	Jan	Feb	Mar	Apr	May	Jun	Jul	Aug	Sep	Oct	Nov	Dec
# Patient	0	0	63	70	71	78	81	85	85	86	87	84
# Missed Treatments	0	0	34	40	35	38	37	66	40	38	58	49



	Jan	Feb	Mar	Apr	May	Jun	Jul	Aug	Sep	Oct	Nov	Dec
# Patient	0	0	63	70	71	78	81	85	85	86	87	84
# Transplants	0	0	0	1	0	0	0	0	0	0	0	0



Methodology: a) All labs for 'Adequacy of Dialysis', 'Nutrition', 'Osteodystrophy', 'Anemia' and 'Diabetes' based on last value of month; b) BP's and #L processed are average of all values for month; c) Access data takes last access of month; d) Values for SGA and 'Infection Control' use most recent result.