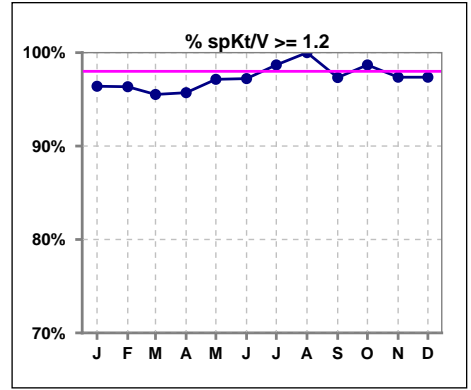
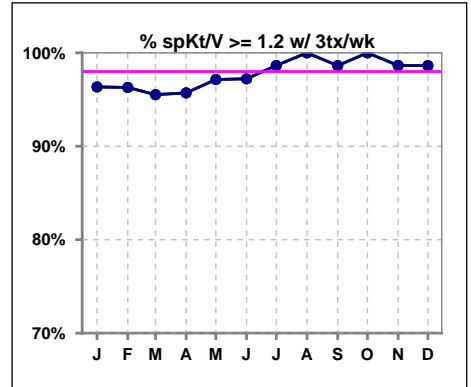


I. ADEQUACY OF DIALYSIS

	Jan	Feb	Mar	Apr	May	Jun	Jul	Aug	Sep	Oct	Nov	Dec
# spKt/V	139	137	67	70	70	72	76	76	75	76	76	76
# spKt/V >= 1.2	134	132	64	67	68	70	75	76	73	75	74	74
Pop. Mean	1.60	1.64	1.63	1.60	1.68	1.61	1.57	1.60	1.63	1.61	1.58	1.59
Std. Deviation	0.29	0.29	0.29	0.27	0.28	0.27	0.27	0.30	0.28	0.27	0.28	0.27
% spKt/V >= 1.2	96%	96%	96%	96%	97%	97%	99%	100%	97%	99%	97%	97%



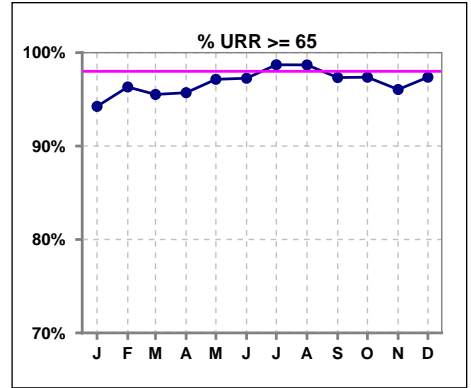
	Jan	Feb	Mar	Apr	May	Jun	Jul	Aug	Sep	Oct	Nov	Dec
# spKt/V w/ 3tx/wk	137	135	67	70	70	72	74	74	73	74	74	73
# spKt/V >= 1.2 w/3tx/wk	132	130	64	67	68	70	73	74	72	74	73	72
Pop. Mean	1.61	1.64	1.63	1.60	1.68	1.61	1.58	1.61	1.64	1.62	1.60	1.58
Std. Deviation	0.29	0.29	0.29	0.27	0.28	0.27	0.27	0.31	0.27	0.27	0.27	0.25
% >= 1.2 w/3tx/wk	96%	96%	96%	96%	97%	97%	99%	100%	99%	100%	99%	99%



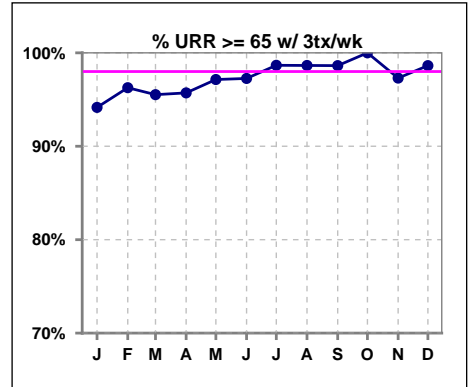
Methodology: a) All labs for 'Adequacy of Dialysis', 'Nutrition', 'Osteodystrophy', 'Anemia' and 'Diabetes' based on last value of month; b) BP's and #L processed are average of all values for month; c) Access data takes last access of month; d) Values for SGA and 'Infection Control' use most recent result.

I. ADEQUACY OF DIALYSIS - CONT.

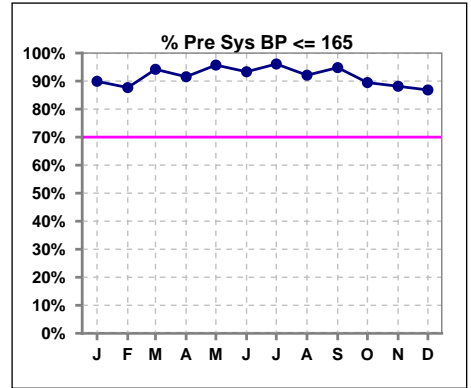
	Jan	Feb	Mar	Apr	May	Jun	Jul	Aug	Sep	Oct	Nov	Dec
# URR	139	136	67	70	70	73	77	76	75	76	76	76
# URR >= 65	131	131	64	67	68	71	76	75	73	74	73	74
Pop. Mean	75	75	75	75	76	75	74	75	75	75	74	75
Std. Deviation	6.27	6.32	6.33	5.75	5.41	5.88	5.37	5.72	5.56	5.65	5.94	5.41
% URR >= 65	94%	96%	96%	96%	97%	97%	99%	99%	97%	97%	96%	97%



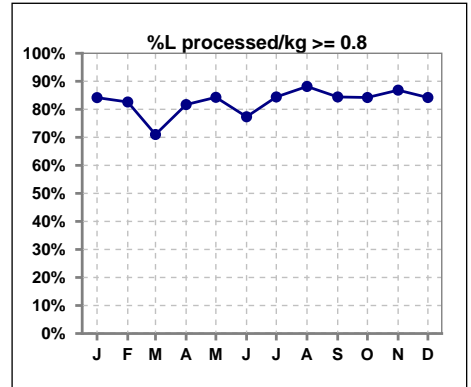
	Jan	Feb	Mar	Apr	May	Jun	Jul	Aug	Sep	Oct	Nov	Dec
# URR w/ 3tx/wk	137	134	67	70	70	73	75	74	73	74	74	73
# URR>=65 w/ 3tx/wk	129	129	64	67	68	71	74	73	72	74	72	72
Pop. Mean	75	75	75	75	76	75	74	75	76	75	75	75
Std. Deviation	6.29	6.37	6.33	5.75	5.41	5.88	5.41	5.73	5.34	5.37	5.50	5.07
% URR>=65 w/ 3tx/wk	94%	96%	96%	96%	97%	97%	99%	99%	99%	100%	97%	99%



	Jan	Feb	Mar	Apr	May	Jun	Jul	Aug	Sep	Oct	Nov	Dec
# Pre Sys BP	139	138	69	71	70	75	77	76	77	76	76	76
# Pre Sys BP <= 165	125	121	65	65	67	71	74	70	73	68	67	66
Pop. Mean	142	142	139	137	139	137	138	139	141	143	142	143
Std. Deviation	18.4	18.8	17.3	18.2	16.7	17.0	16.8	17.8	17.9	18.3	18.3	18.7
% Pre Sys BP <= 165	90%	88%	94%	92%	96%	93%	96%	92%	95%	89%	88%	87%



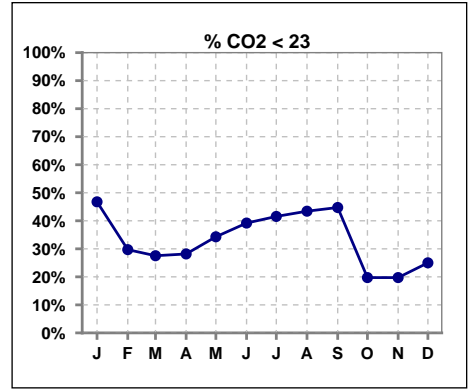
	Jan	Feb	Mar	Apr	May	Jun	Jul	Aug	Sep	Oct	Nov	Dec
# L processed/kg	139	138	69	71	70	75	77	76	77	76	76	76
# L processed/kg >= 0.8	117	114	49	58	59	58	65	67	65	64	66	64
Pop. Mean	1	1	1	1	1	1	1	1	1	1	1	1
Std. Deviation	0.3	0.3	0.3	0.3	0.3	0.3	0.3	0.3	0.3	0.3	0.3	0.3
% L processed/kg >= 0.8	84%	83%	71%	82%	84%	77%	84%	88%	84%	84%	87%	84%



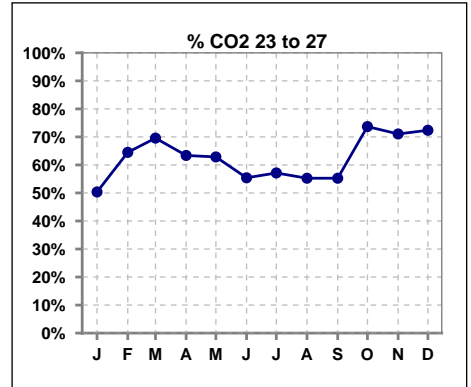
Methodology: a) All labs for 'Adequacy of Dialysis', 'Nutrition', 'Osteodystrophy', 'Anemia' and 'Diabetes' based on last value of month; b) BP's and #L processed are average of all values for month; c) Access data takes last access of month; d) Values for SGA and 'Infection Control' use most recent result.

I. ADEQUACY OF DIALYSIS - CONT.

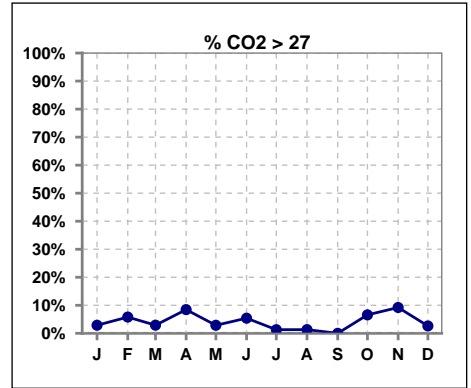
	Jan	Feb	Mar	Apr	May	Jun	Jul	Aug	Sep	Oct	Nov	Dec
# CO2	139	138	69	71	70	74	77	76	76	76	76	76
# CO2 < 23	65	41	19	20	24	29	32	33	34	15	15	19
Pop. Mean	23	24	24	24	23	23	23	23	23	24	24	24
Std. Deviation	2.43	2.50	2.05	2.60	2.81	2.60	2.90	2.51	2.61	2.48	2.85	2.34
% CO2 < 23	47%	30%	28%	28%	34%	39%	42%	43%	45%	20%	20%	25%



	Jan	Feb	Mar	Apr	May	Jun	Jul	Aug	Sep	Oct	Nov	Dec
# CO2	139	138	69	71	70	74	77	76	76	76	76	76
# CO2 23 to 27	70	89	48	45	44	41	44	42	42	56	54	55
Pop. Mean	23	24	24	24	23	23	23	23	23	24	24	24
Std. Deviation	2.43	2.50	2.05	2.60	2.81	2.60	2.90	2.51	2.61	2.48	2.85	2.34
% CO2 23 to 27	50%	64%	70%	63%	63%	55%	57%	55%	55%	74%	71%	72%



	Jan	Feb	Mar	Apr	May	Jun	Jul	Aug	Sep	Oct	Nov	Dec
# CO2	139	138	69	71	70	74	77	76	76	76	76	76
# CO2 > 27	4	8	2	6	2	4	1	1	0	5	7	2
Pop. Mean	23	24	24	24	23	23	23	23	23	24	24	24
Std. Deviation	2.43	2.50	2.05	2.60	2.81	2.60	2.90	2.51	2.61	2.48	2.85	2.34
% CO2 > 27	3%	6%	3%	8%	3%	5%	1%	1%	0%	7%	9%	3%

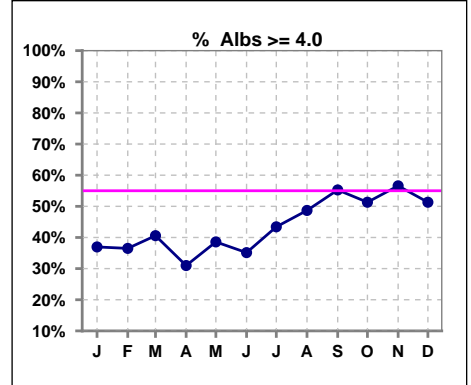


Methodology: a) All labs for 'Adequacy of Dialysis', 'Nutrition', 'Osteodystrophy', 'Anemia' and 'Diabetes' based on last value of month; b) BP's and #L processed are average of all values for month; c) Access data takes last access of month; d) Values for SGA and 'Infection Control' use most recent result.

*Albumin values use BCG method - as of July 2001

II. NUTRITION

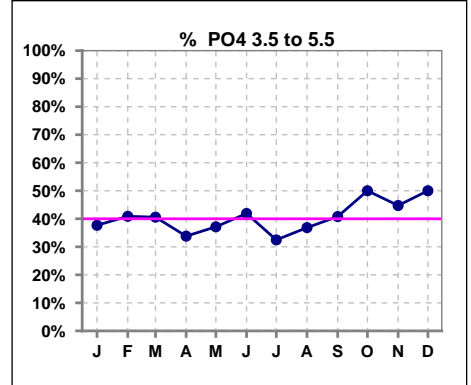
	Jan	Feb	Mar	Apr	May	Jun	Jul	Aug	Sep	Oct	Nov	Dec
# Albumin	138	137	69	71	70	74	76	76	76	76	76	76
# Albumin >= 4.0	51	50	28	22	27	26	33	37	42	39	43	39
Pop. Mean	3.8	3.8	3.7	3.7	3.8	3.8	3.8	3.9	3.9	3.9	3.9	3.9
Std. Deviation	0.42	0.39	0.39	0.41	0.37	0.39	0.41	0.37	0.39	0.34	0.37	0.39
% Alb >= 4.0	37%	36%	41%	31%	39%	35%	43%	49%	55%	51%	57%	51%



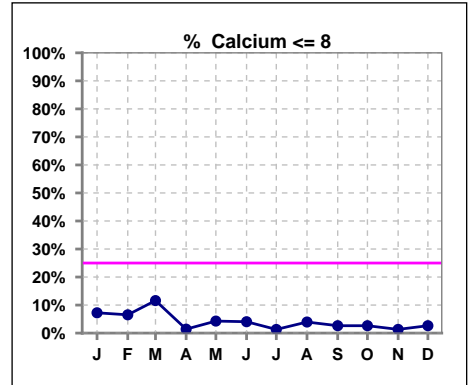
Lab methodology for PTH changed January 2012

III. OSTEODYSTROPHY

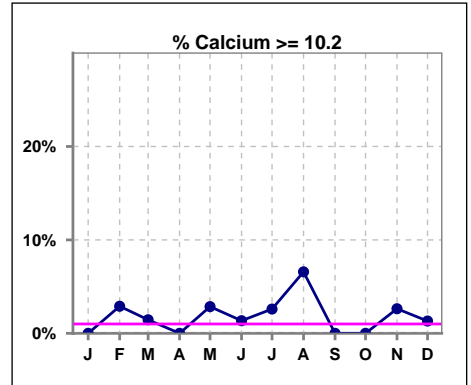
	Jan	Feb	Mar	Apr	May	Jun	Jul	Aug	Sep	Oct	Nov	Dec
# PO4	138	137	69	71	70	74	77	76	76	76	76	76
# PO4 3.5 to 5.5	52	56	28	24	26	31	25	28	31	38	34	38
Pop. Mean	5.7	5.9	5.8	5.8	5.8	6.0	6.1	6.4	6.1	5.9	5.9	5.8
Std. Deviation	1.76	1.79	1.78	1.80	1.81	1.72	1.76	1.99	1.75	1.66	1.73	1.47
% PO4 3.5 to 5.5	38%	41%	41%	34%	37%	42%	32%	37%	41%	50%	45%	50%



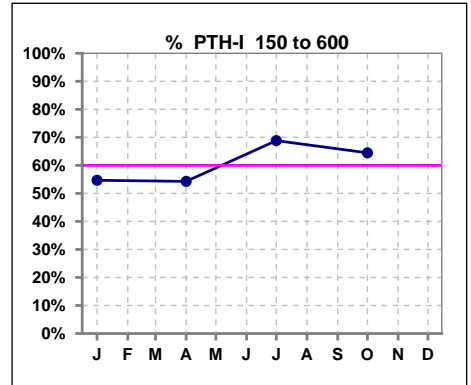
	Jan	Feb	Mar	Apr	May	Jun	Jul	Aug	Sep	Oct	Nov	Dec
# Calcium	138	138	69	71	70	74	77	76	76	76	76	76
# Calcium <= 8	10	9	8	1	3	3	1	3	2	2	1	2
Pop. Mean	9.1	9.2	9.0	9.1	9.2	9.3	9.2	9.4	9.2	9.3	9.3	9.2
Std. Deviation	0.68	0.68	0.67	0.62	0.67	0.66	0.55	0.67	0.59	0.53	0.52	0.56
% Calcium <= 8	7%	7%	12%	1%	4%	4%	1%	4%	3%	3%	1%	3%



	Jan	Feb	Mar	Apr	May	Jun	Jul	Aug	Sep	Oct	Nov	Dec
# Calcium	138	138	69	71	70	74	77	76	76	76	76	76
# Calcium >= 10.2	0	4	1	0	2	1	2	5	0	0	2	1
Pop. Mean	9.1	9.2	9.0	9.1	9.2	9.3	9.2	9.4	9.2	9.3	9.3	9.2
Std. Deviation	0.68	0.68	0.67	0.62	0.67	0.66	0.55	0.67	0.59	0.53	0.52	0.56
% Calcium >= 10.2	0%	3%	1%	0%	3%	1%	3%	7%	0%	0%	3%	1%



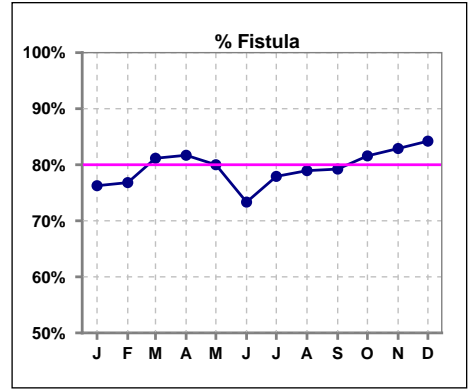
	Jan	Feb	Mar	Apr	May	Jun	Jul	Aug	Sep	Oct	Nov	Dec
# PTH-I	139			70			77			76		
# PTH-I 150 to 600	76			38			53			49		
Pop. Mean	572			550			530			435		
Std. Deviation	474			484			485			418		
% PTH-I 150 to 600	55%			54%			69%			64%		



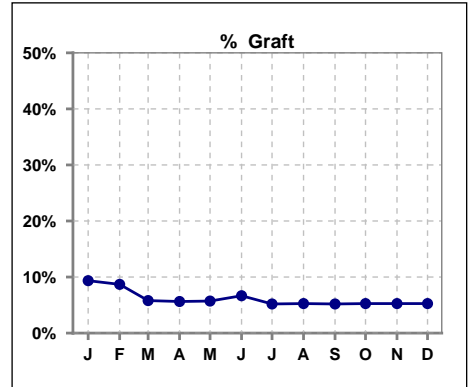
Methodology: a) All labs for 'Adequacy of Dialysis', 'Nutrition', 'Osteodystrophy', 'Anemia' and 'Diabetes' based on last value of month; b) BP's and #L processed are average of all values for month; c) Access data takes last access of month; d) Values for SGA and 'Infection Control' use most recent result.

IV. ACCESS

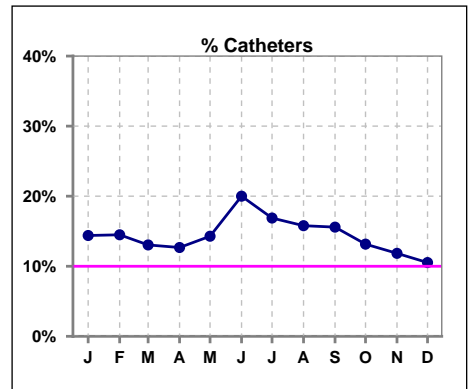
	Jan	Feb	Mar	Apr	May	Jun	Jul	Aug	Sep	Oct	Nov	Dec
# Access	139	138	69	71	70	75	77	76	77	76	76	76
# Fistula	106	106	56	58	56	55	60	60	61	62	63	64
% Fistula	76%	77%	81%	82%	80%	73%	78%	79%	79%	82%	83%	84%



	Jan	Feb	Mar	Apr	May	Jun	Jul	Aug	Sep	Oct	Nov	Dec
# Access	139	138	69	71	70	75	77	76	77	76	76	76
# Graft	13	12	4	4	4	5	4	4	4	4	4	4
% Graft	9%	9%	6%	6%	6%	7%	5%	5%	5%	5%	5%	5%



	Jan	Feb	Mar	Apr	May	Jun	Jul	Aug	Sep	Oct	Nov	Dec
# Access	139	138	69	71	70	75	77	76	77	76	76	76
# Catheters	20	20	9	9	10	15	13	12	12	10	9	8
% Catheters	14%	14%	13%	13%	14%	20%	17%	16%	16%	13%	12%	11%



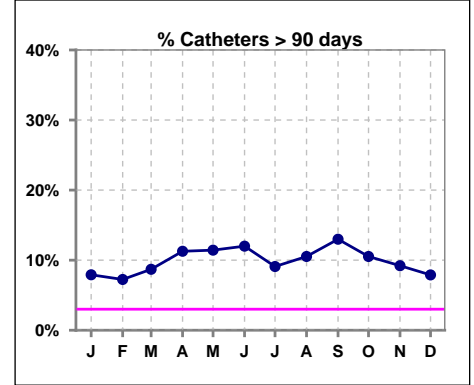
Methodology: a) All labs for 'Adequacy of Dialysis', 'Nutrition', 'Osteodystrophy', 'Anemia' and 'Diabetes' based on last value of month; b) BP's and #L processed are average of all values for month; c) Access data takes last access of month; d) Values for SGA and 'Infection Control' use most recent result.

IV. ACCESS - CONT.

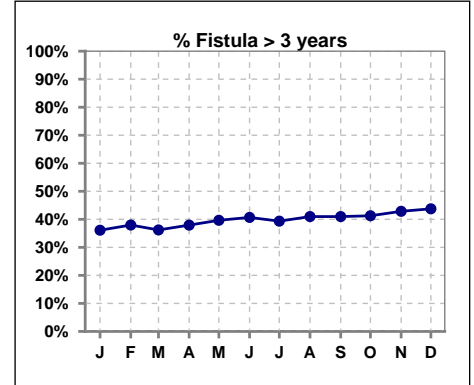
Catheters > 90 days

	Jan	Feb	Mar	Apr	May	Jun	Jul	Aug	Sep	Oct	Nov	Dec
# Access	139	138	69	71	70	75	77	76	77	76	76	76
# Catheters	11	10	6	8	8	9	7	8	10	8	7	6
% Catheters	8%	7%	9%	11%	11%	12%	9%	11%	13%	11%	9%	8%

Definition: Catheter in use on last treatment of the month



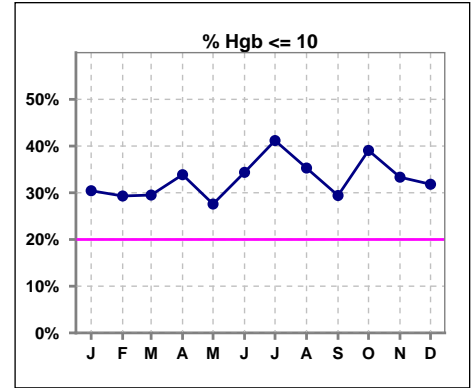
	Jan	Feb	Mar	Apr	May	Jun	Jul	Aug	Sep	Oct	Nov	Dec
# Fistula	108	108	58	58	58	59	61	61	61	63	63	64
# Fistula > 3 yrs	39	41	21	22	23	24	24	25	25	26	27	28
% Fistula > 3 yrs	36%	38%	36%	38%	40%	41%	39%	41%	41%	41%	43%	44%



V. ANEMIA

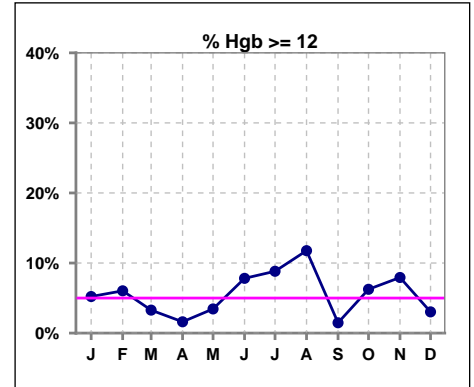
	Jan	Feb	Mar	Apr	May	Jun	Jul	Aug	Sep	Oct	Nov	Dec
# Hgb	115	116	61	62	58	64	68	68	68	64	63	66
# Hgb <= 10	35	34	18	21	16	22	28	24	20	25	21	21
Pop. Mean	10.4	10.6	10.4	10.3	10.3	10.5	10.3	10.5	10.5	10.5	10.4	10.3
Std. Deviation	1.2	1.1	1.2	1.1	1.1	1.3	1.3	1.2	0.9	1.2	1.1	1.2
% Hgb <= 10	30%	29%	30%	34%	28%	34%	41%	35%	29%	39%	33%	32%

Note: Excludes patients who received no ESA in month.



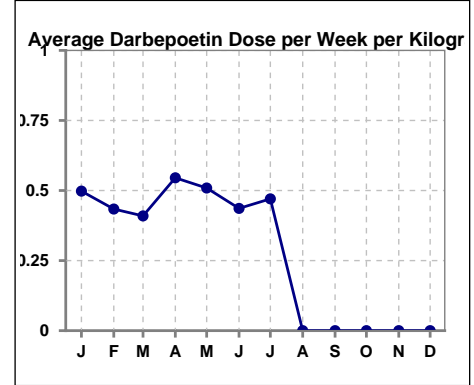
	Jan	Feb	Mar	Apr	May	Jun	Jul	Aug	Sep	Oct	Nov	Dec
# Hgb	115	116	61	62	58	64	68	68	68	64	63	66
# Hgb >= 12	6	7	2	1	2	5	6	8	1	4	5	2
Pop. Mean	10.4	10.6	10.4	10.3	10.3	10.5	10.3	10.5	10.5	10.5	10.4	10.3
Std. Deviation	1.2	1.1	1.2	1.1	1.1	1.3	1.3	1.2	0.9	1.2	1.1	1.2
% Hgb >= 12	5%	6%	3%	2%	3%	8%	9%	12%	1%	6%	8%	3%

Note: Excludes patients who received no ESA in month.



Average Darbepoetin Dose per Week per Kilogram

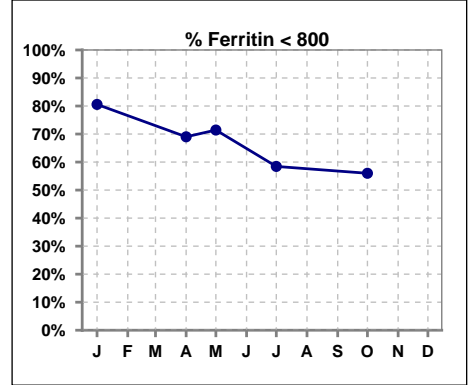
	Jan	Feb	Mar	Apr	May	Jun	Jul	Aug	Sep	Oct	Nov	Dec
# Average Darbepoetin	.5	.4	.4	.5	.5	.4	.5	0	0	0	0	0



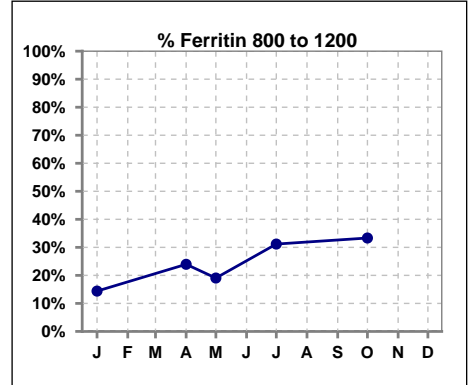
V. ANEMIA - CONT.

Iron Profile

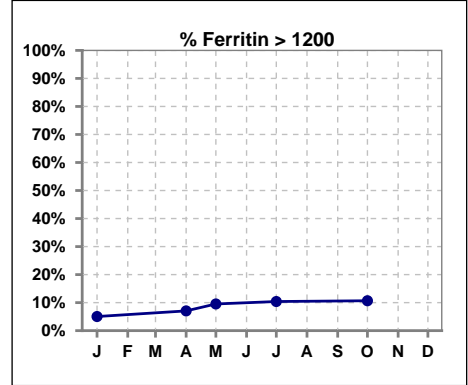
	Jan	Feb	Mar	Apr	May	Jun	Jul	Aug	Sep	Oct	Nov	Dec
# Ferritin	139			71	21		77			75		
# Ferritin < 800	112			49	15		45			42		
Pop. Mean	621			682	714		779			793		
Std. Deviation	355			344	320		384			344		
% Ferritin < 800	81%			69%	71%		58%			56%		



	Jan	Feb	Mar	Apr	May	Jun	Jul	Aug	Sep	Oct	Nov	Dec
# Ferritin	139			71	21		77			75		
# Ferritin 800 to 1200	20			17	4		24			25		
Pop. Mean	621			682	714		779			793		
Std. Deviation	355			344	320		384			344		
% Ferritin 800 to 1200	14%			24%	19%		31%			33%		

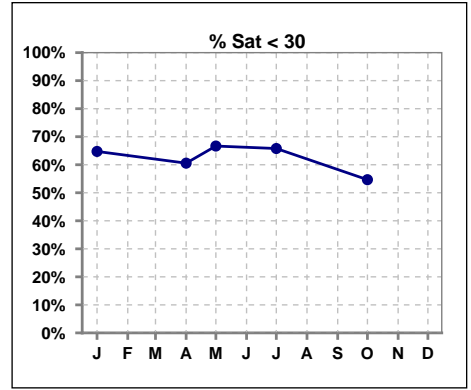


	Jan	Feb	Mar	Apr	May	Jun	Jul	Aug	Sep	Oct	Nov	Dec
# Ferritin	139			71	21		77			75		
# Ferritin > 1200	7			5	2		8			8		
Pop. Mean	621			682	714		779			793		
Std. Deviation	355			344	320		384			344		
% Ferritin > 1200	5%			7%	10%		10%			11%		

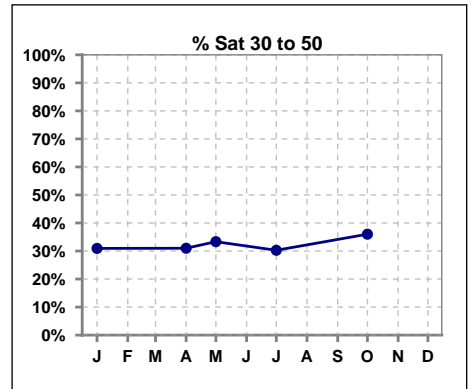


V. ANEMIA - CONT.

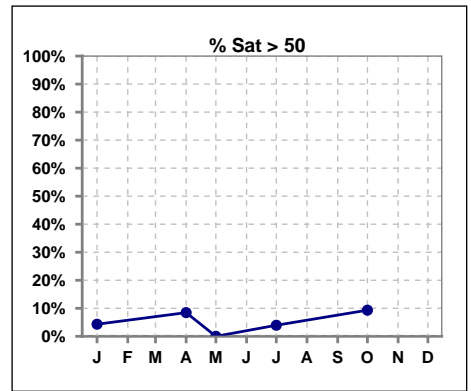
	Jan	Feb	Mar	Apr	May	Jun	Jul	Aug	Sep	Oct	Nov	Dec
# % Sat	139			71	21		76			75		
# % Sat < 30	90			43	14		50			41		
Pop. Mean	29			29	25		27			30		
Std. Deviation	15			16	8		13			14		
% % Sat < 30	65%			61%	67%		66%			55%		



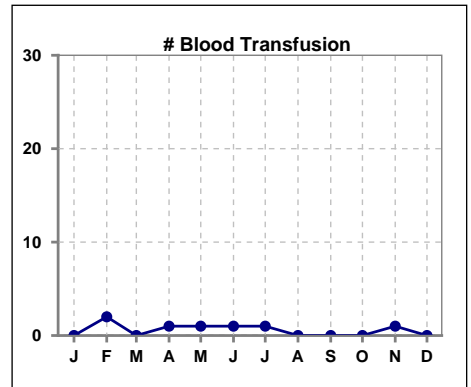
	Jan	Feb	Mar	Apr	May	Jun	Jul	Aug	Sep	Oct	Nov	Dec
# % Sat	139			71	21		76			75		
# % Sat 30 to 50	43			22	7		23			27		
Pop. Mean	29			29	25		27			30		
Std. Deviation	15			16	8		13			14		
% % Sat 30 to 50	31%			31%	33%		30%			36%		



	Jan	Feb	Mar	Apr	May	Jun	Jul	Aug	Sep	Oct	Nov	Dec
# % Sat	139			71	21		76			75		
# % Sat > 50	6			6	0		3			7		
Pop. Mean	29			29	25		27			30		
Std. Deviation	15			16	8		13			14		
% % Sat > 50	4%			8%	0%		4%			9%		



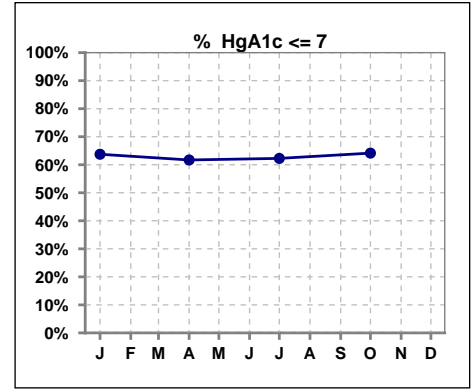
	Jan	Feb	Mar	Apr	May	Jun	Jul	Aug	Sep	Oct	Nov	Dec
# Patient	141	139	71	72	70	75	77	76	77	76	76	76
# Blood Transfusion	0	2	0	1	1	1	1	0	0	0	1	0



Methodology: a) All labs for 'Adequacy of Dialysis', 'Nutrition', 'Osteodystrophy', 'Anemia' and 'Diabetes' based on last value of month; b) BP's and #L processed are average of all values for month; c) Access data takes last access of month; d) Values for SGA and 'Infection Control' use most recent result.

VI. Diabetes

	Jan	Feb	Mar	Apr	May	Jun	Jul	Aug	Sep	Oct	Nov	Dec
# HgA1c	91			47			53			53		
# HgA1c <= 7	58			29			33			34		
Pop. Mean	6.9			6.7			6.6			6.6		
Std. Deviation	1.56			1.45			1.49			1.48		
% HgA1c <= 7	64%			62%			62%			64%		

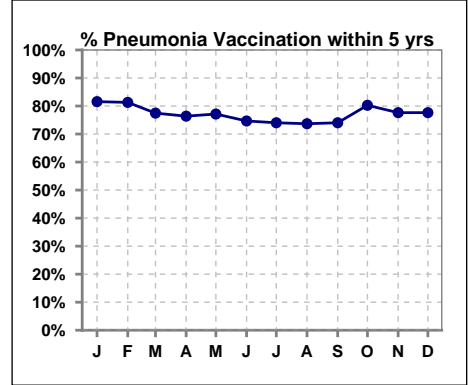


Methodology: a) All labs for 'Adequacy of Dialysis', 'Nutrition', 'Osteodystrophy', 'Anemia' and 'Diabetes' based on last value of month; b) BP's and #L processed are average of all values for month; c) Access data takes last access of month; d) Values for SGA and 'Infection Control' use most recent result.

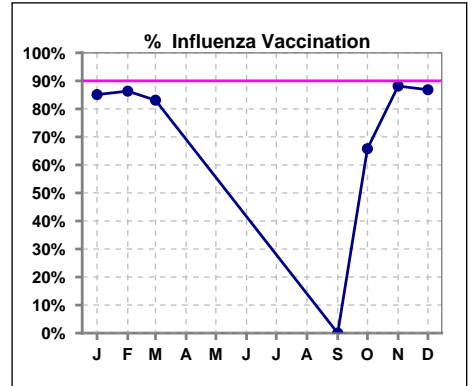
VII. Infection Control

Pneumonia vaccination within the past five years

	Jan	Feb	Mar	Apr	May	Jun	Jul	Aug	Sep	Oct	Nov	Dec
# Patient	141	139	71	72	70	75	77	76	77	76	76	76
# Pneumonia	115	113	55	55	54	56	57	56	57	61	59	59
% Pneumonia	82%	81%	77%	76%	77%	75%	74%	74%	74%	80%	78%	78%



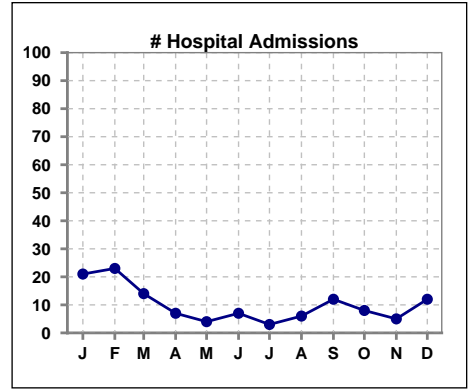
	Jan	Feb	Mar	Apr	May	Jun	Jul	Aug	Sep	Oct	Nov	Dec
# Patient	141	139	71						77	76	76	76
# Influenza	120	120	59						0	50	67	66
% Influenza	85%	86%	83%						0%	66%	88%	87%



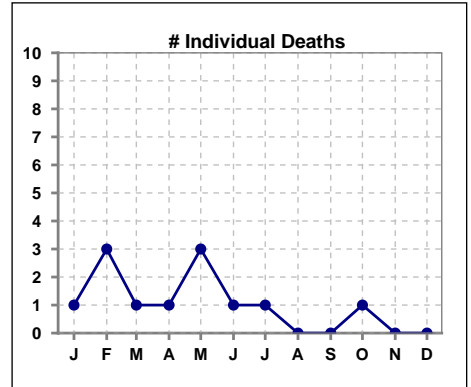
Methodology: a) All labs for 'Adequacy of Dialysis', 'Nutrition', 'Osteodystrophy', 'Anemia' and 'Diabetes' based on last value of month; b) BP's and #L processed are average of all values for month; c) Access data takes last access of month; d) Values for SGA and 'Infection Control' use most recent result.

VIII. Outcome measures

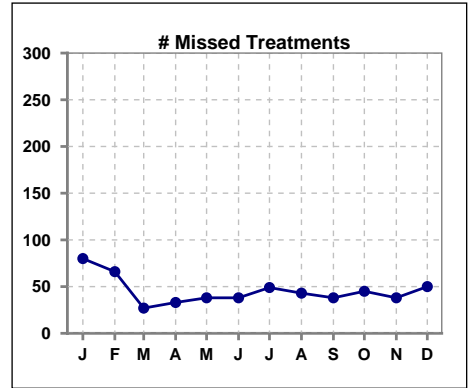
	Jan	Feb	Mar	Apr	May	Jun	Jul	Aug	Sep	Oct	Nov	Dec
# Patient	141	139	71	72	70	75	77	76	77	76	76	76
# Hospital Admissions	21	23	14	7	4	7	3	6	12	8	5	12



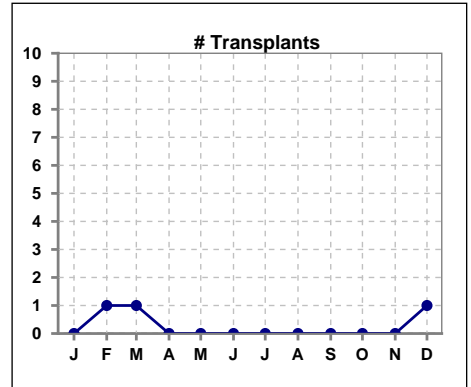
	Jan	Feb	Mar	Apr	May	Jun	Jul	Aug	Sep	Oct	Nov	Dec
# Patient	141	139	71	72	70	75	77	76	77	76	76	76
# Individual Deaths	1	3	1	1	3	1	1	0	0	1	0	0



	Jan	Feb	Mar	Apr	May	Jun	Jul	Aug	Sep	Oct	Nov	Dec
# Patient	141	139	71	72	70	75	77	76	77	76	76	76
# Missed Treatments	80	66	27	33	38	38	49	43	38	45	38	50



	Jan	Feb	Mar	Apr	May	Jun	Jul	Aug	Sep	Oct	Nov	Dec
# Patient	141	139	71	72	70	75	77	76	77	76	76	76
# Transplants	0	1	1	0	0	0	0	0	0	0	0	1



Methodology: a) All labs for 'Adequacy of Dialysis', 'Nutrition', 'Osteodystrophy', 'Anemia' and 'Diabetes' based on last value of month; b) BP's and #L processed are average of all values for month; c) Access data takes last access of month; d) Values for SGA and 'Infection Control' use most recent result.